

impact.

MINERALS

An Emerging Western Australian Battery Metals Explorer



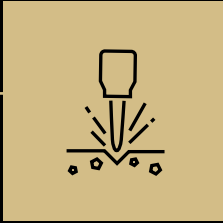


Persistence is the key

**Provided you are in the
right area!**



The Key to Exploration Success: Large Strategic Ground Holdings: Ni-Cu-PGM-Au; LCT Pegmatites; REE-Rb



Early stage Gold, Ni-Cu-PGM and LCT Pegmatites

WA Projects (IPT 100% or 80%)

- Doonia, WA: walk up drill target for gold drilled Q1 2022.
- Arkun, WA: Large strategic ground holding of 2,000 sq km in the emerging Ni-Cu-PGE Province near Julimar (Chalice Mining NL). Surrounded by Anglo American Corporation
- Four new JV's using emerging geophysical technology



\$18 million joint venture with IGO on emerging high grade Ni-Cu-PGM discovery

Broken Hill, New South Wales (IPT 100%)

- Home to the giant Broken Hill silver-lead-zinc deposit (>300 Mt)
- Large strategic ground holding of 815 sq km
- Major JV with IGO over two tenement: ground EM survey commenced in January 2022.
- Large EM conductor found: drilling late 2022
- Remaining tenements: considering options.



Other Strategic Holdings Rationalisation of portfolio in progress

Commonwealth, NSW (IPT: 100%)

- Home to the giant Cadia copper-gold deposit (>40 Moz Au, >10 Mt Cu)
- Large strategic ground holding of 700 sq km
- Potential for VMS deposits like Eskay Creek (4 M oz Au, 180M oz Ag) : Inferred resource 160,000 oz Au eq
- **Blackridge, QLD**: 150 sq km covering part of >300,000 ounce gold field
- **\$600,000** in shares in ASX juniors

About Impact Minerals (ASX: IPT)



Capital Structure

| | |
|-----------------|---------------|
| Listed on ASX | November 2006 |
| Shares on Issue | 2,200 million |
| Options | 157M unlisted |
| Share Price | 1.2 c |
| Market Cap | \$25 million |
| Cash | A\$2 million |

Shareholders

| | |
|--------------------|-------|
| Bunnenberg Family | 10% |
| ABC Beteiligungen | 10% |
| Directors | 2.4% |
| Top 20 | 43% |
| Top 50 | 52% |
| No of Shareholders | 3,700 |



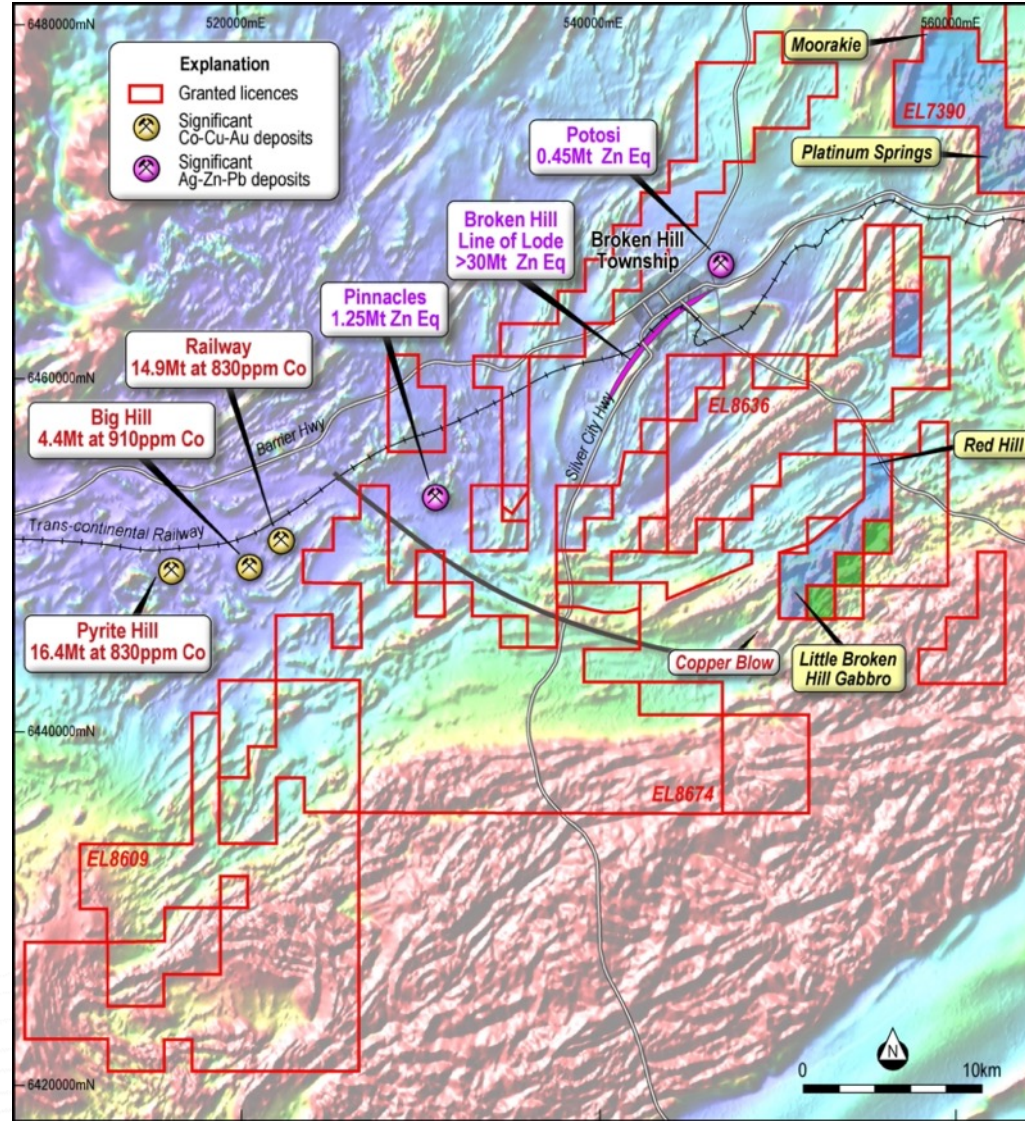
3 year
Share price

Major exploration and commodity boom in progress driven by war and government larceny

Broken Hill Project, PGM-Nickel-Copper, New South Wales



Broken Hill Project Overview



High grades of all six PGM's

1. Major land position of 815 sq km in one of Australia's most prolific mining belts
2. High PGM grades including rare PGM's Rh, Os, Ru and Ir
3. Multiple targets over 25 km for nickel-copper-PGM deposits
 - **Moorkai:** High grade rock chip samples over 9 km trend
 - **Platinum Springs:** high grade magmatic nickel-copper-PGE sulphide
 - **Red Hill:** Impact discovery of very high-grade PGE's
 - **Little Broken Hill:** poorly explored intrusion similar to Jinchuan and Voiseys Bay
4. Potential for million ounce PGM discovery with drilling in progress
5. Joint venture with IGO for Ni-Cu-PGM
6. Significant zinc-lead-silver potential

Major Joint Venture with IGO¹



\$18 million over 8 years to earn 75%



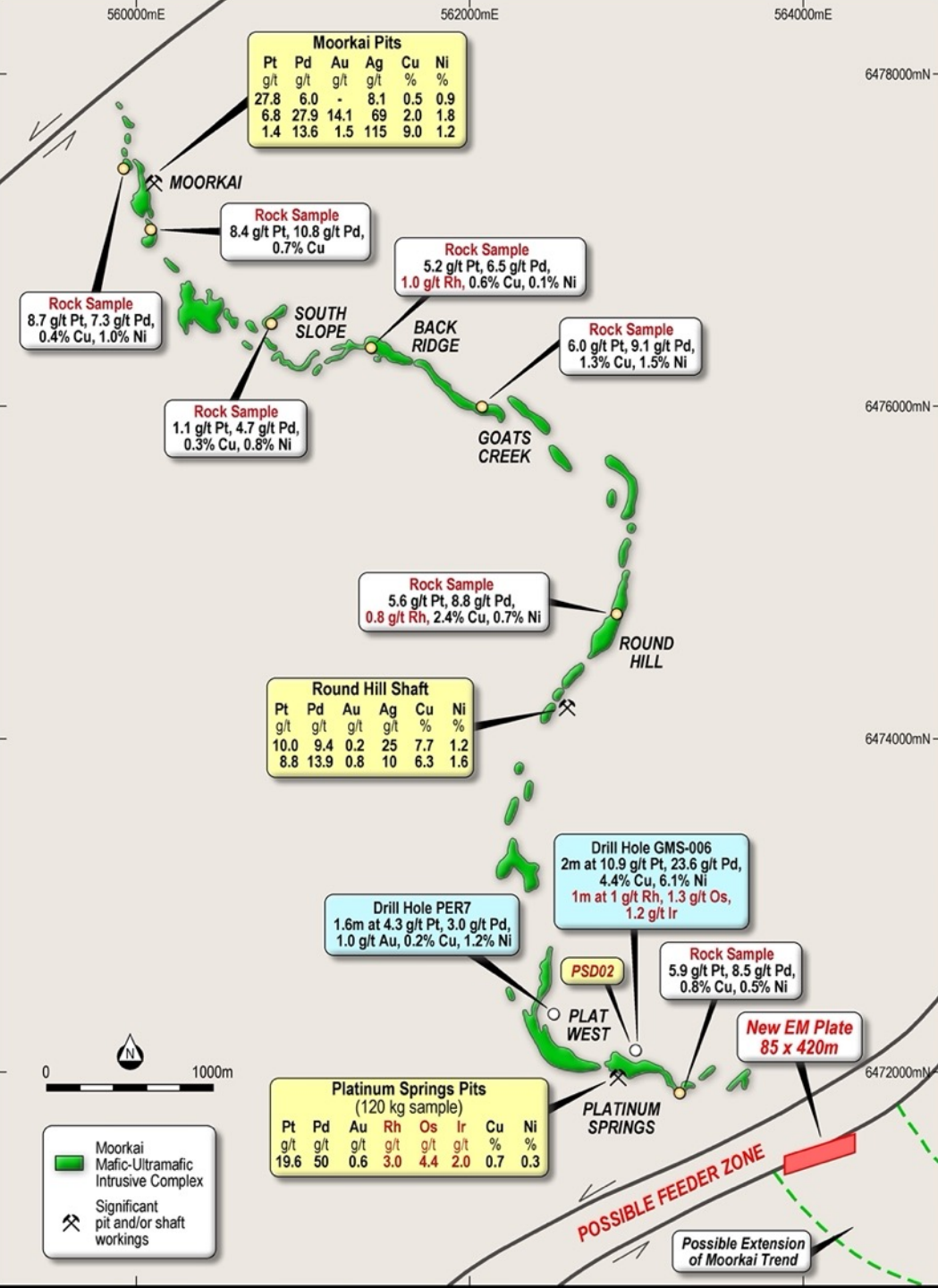
Stage 1: \$6 million to earn 51%

Stage 2: a further \$12 million to earn 75%



\$500,000 before withdrawal:

deep penetrating EM survey in progress: significant conductor discovered



Magmatic Ni-Cu-PGM sulphides Moorkai-Platinum Springs²



Platinum Springs

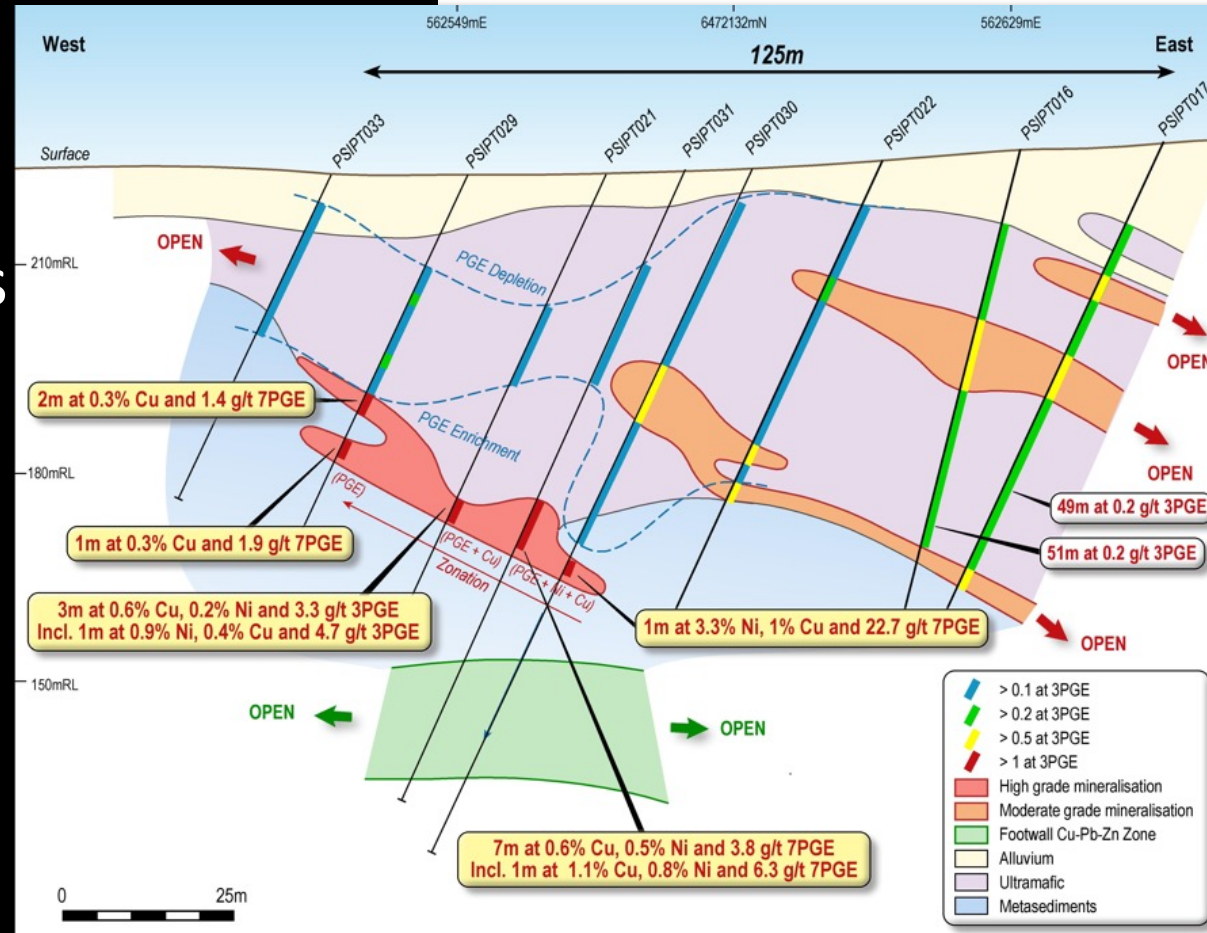
- 0.6 metres at 11.5 g/t platinum, 25.6 g/t palladium, 1.4 g/t gold, 7.6% copper, 7.4% nickel, 44.3 g/t silver, 0.16% cobalt, 1.3 g/t rhodium, 1.7 g/t iridium, 2.0 g/t osmium and 0.8 g/t ruthenium from 57.1 metres down hole within
- Richest ore in Australia?
- Southern end of the 9 km Moorkai Trend dripping in PGE's
- New EM Conductor at southern end of Trend



**New EM
Conductor
discovered**

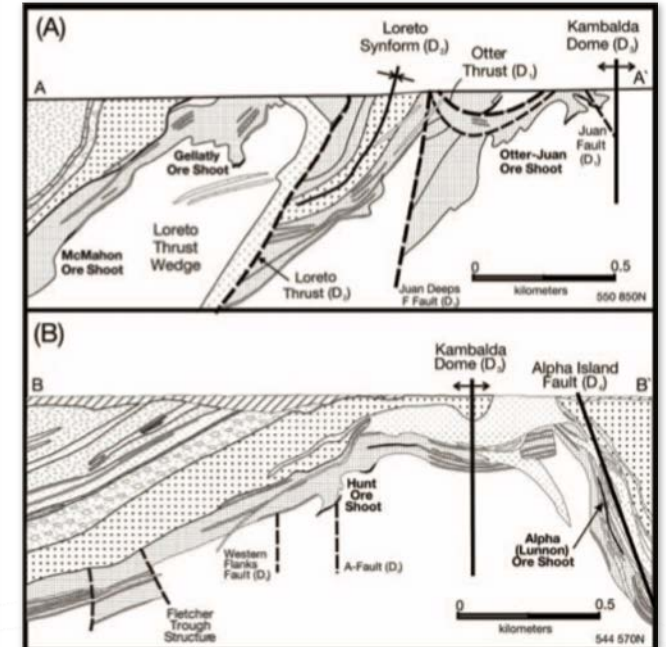
IPT Ratio discovers a Cu-Ni-PGE Kambalda-style Channel at Plat Central³

First coherent zone of mineralization in 40 years of exploration



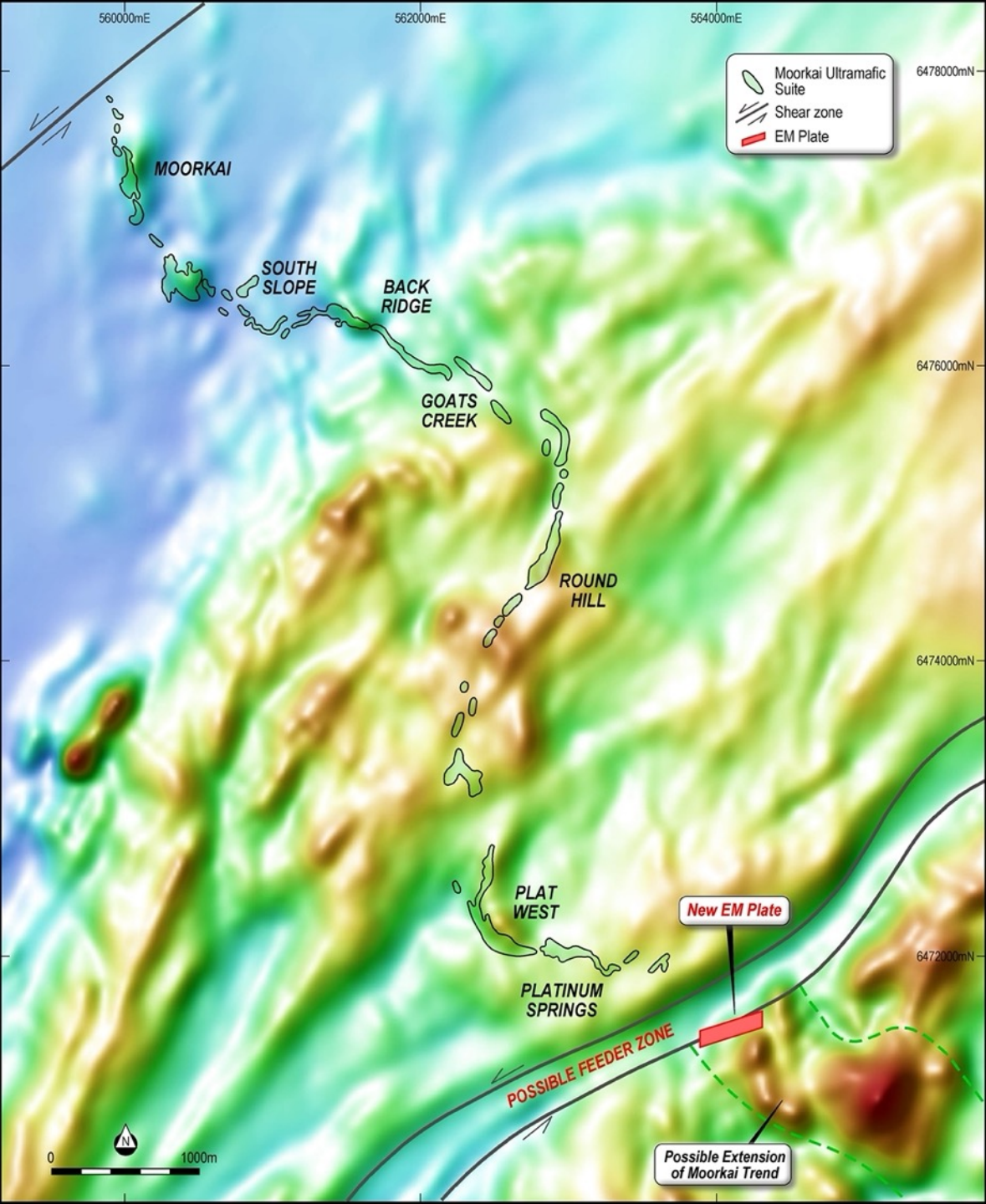
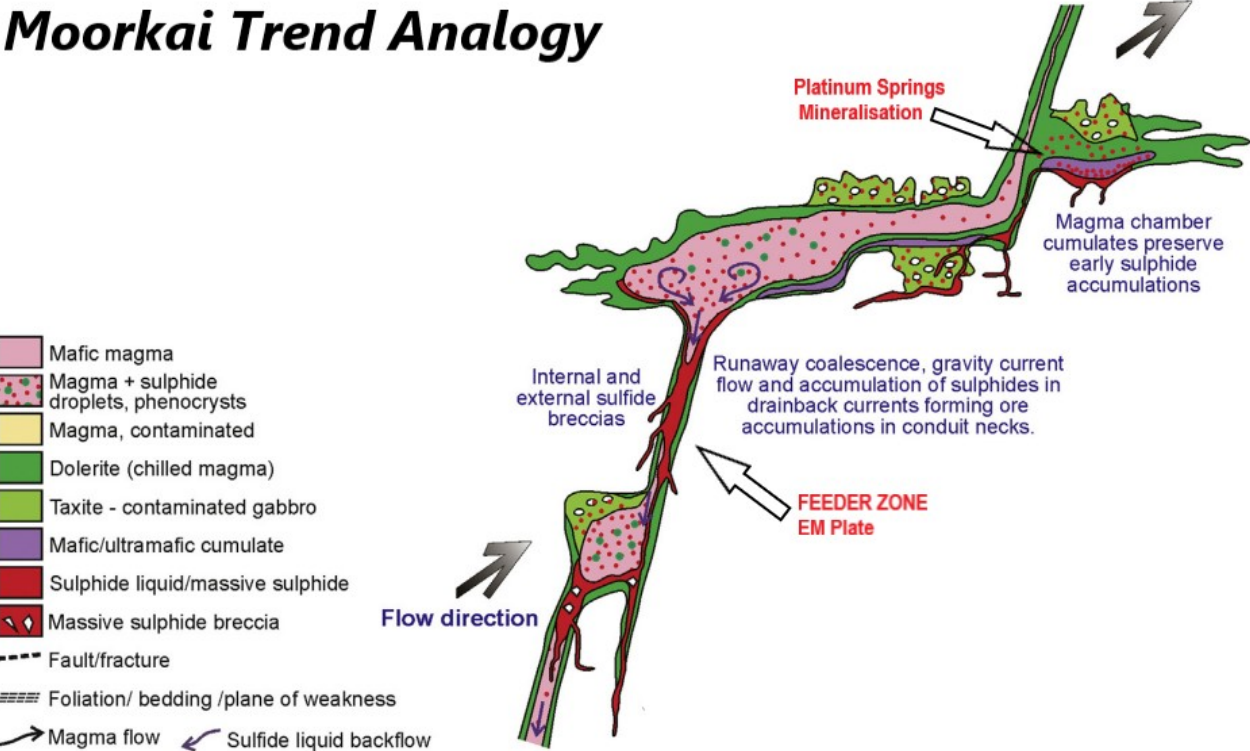
Kambalda Channels

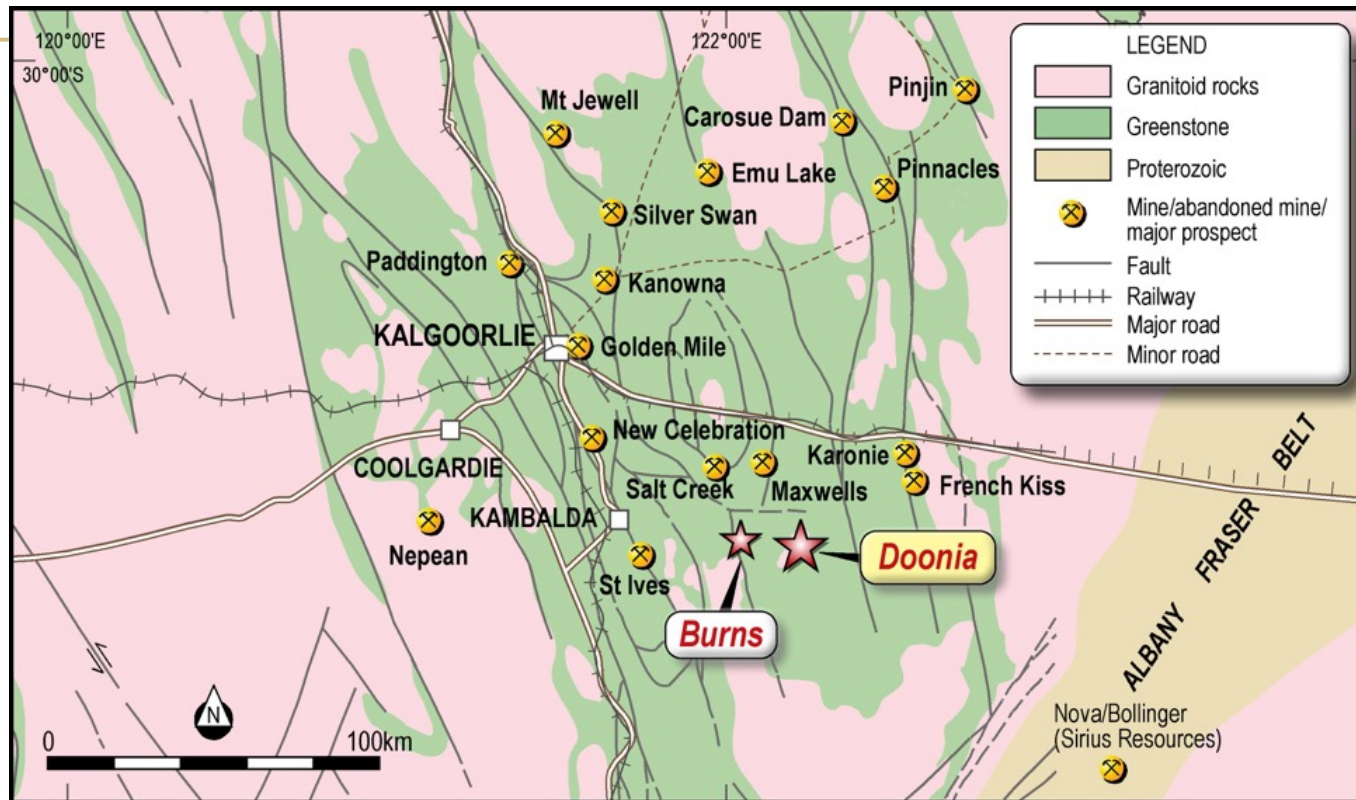
1-7 m thick, 20–100m wide,
>1,000 metres long



New EM Conductor: possible feeder zone to the Moorkai Trend? ⁴

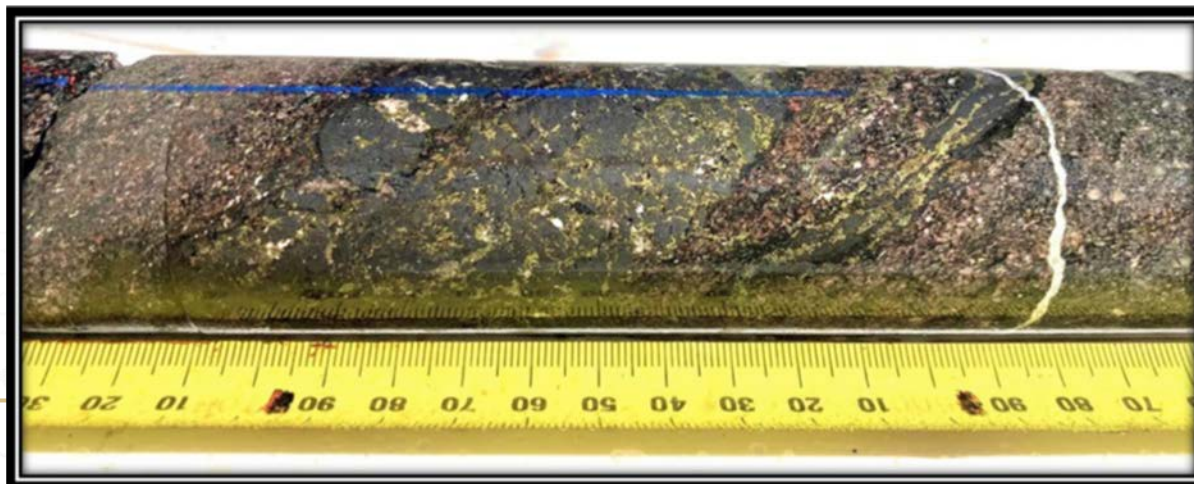
Moorkai Trend Analogy

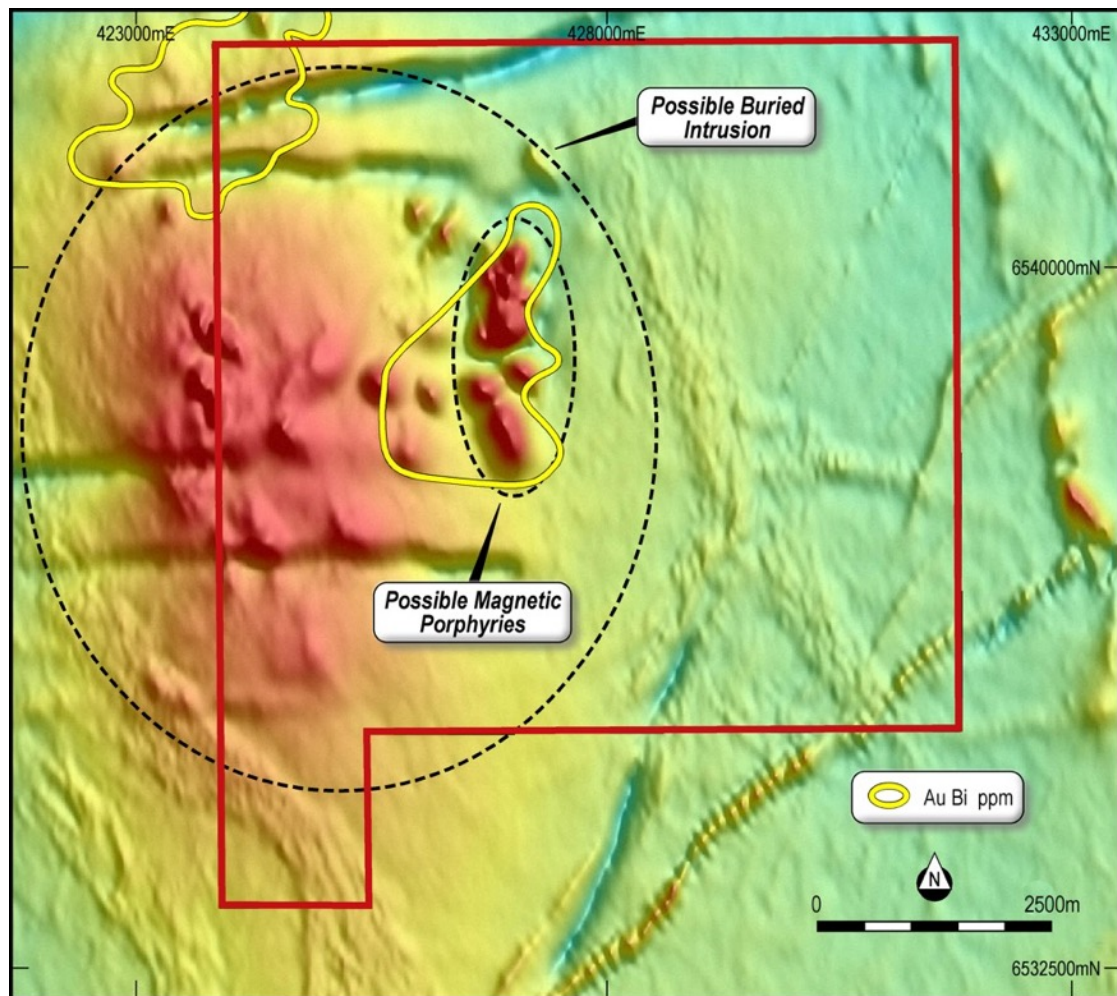




Doonia⁶ Yilgarn Craton, WA

Burns discovery
New
mineralisation
style
Cu-Au-Mt





Doonia⁶ Yilgarn Craton, WA



**Drilling
Completed
Assays
expected early
May**

**Similar geochemistry and
magnetic signal: buried
intrusion with porphyry
plugs.
Abiogenic gas intersected:
investigations in progress**

Building a battery metals fortress in WA⁷

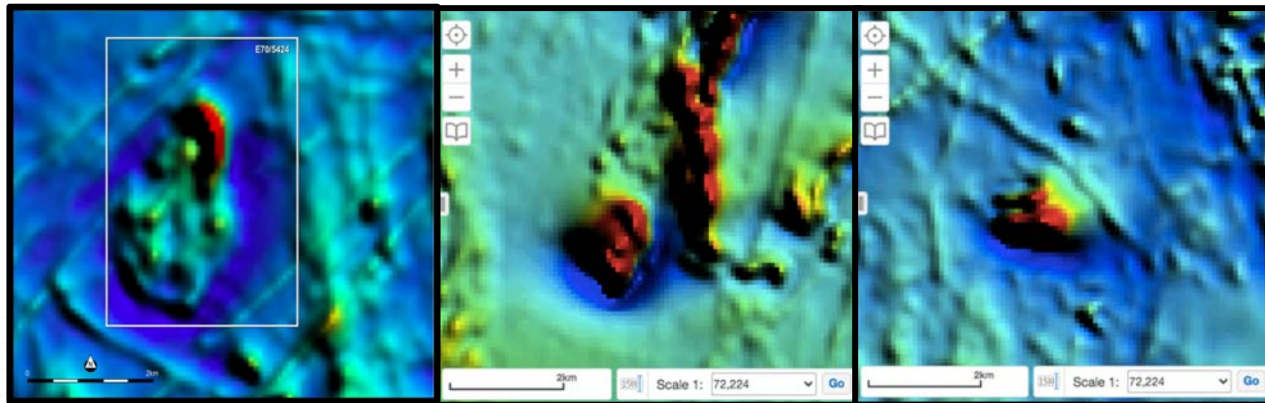
Arkun-Beau 100%
Four JVs 80%

Two acquisitions and a further JV in store!

Driven by new technology



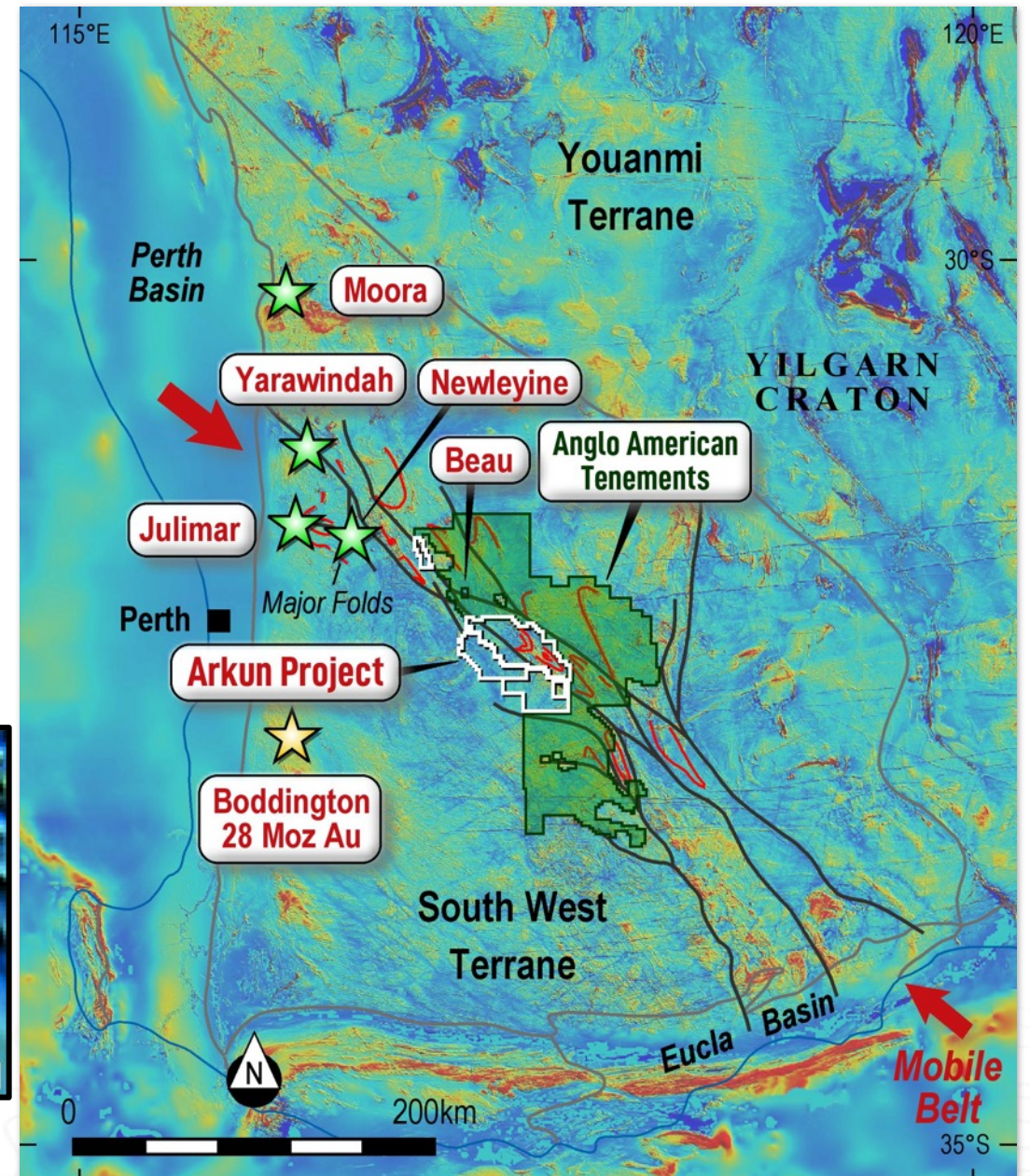
Arkun Project⁸ Emerging Ni-Cu PGM mineral province of SW Western Australia



Beau

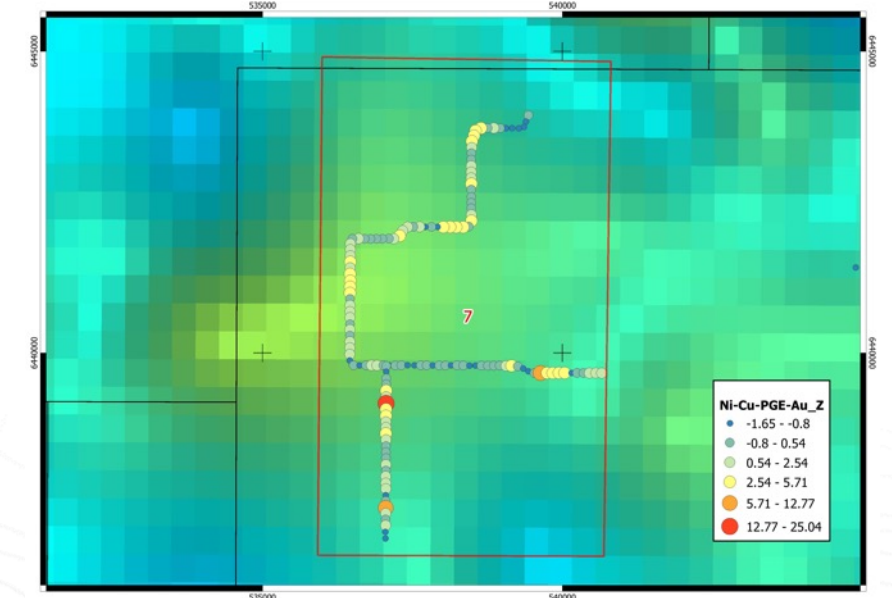
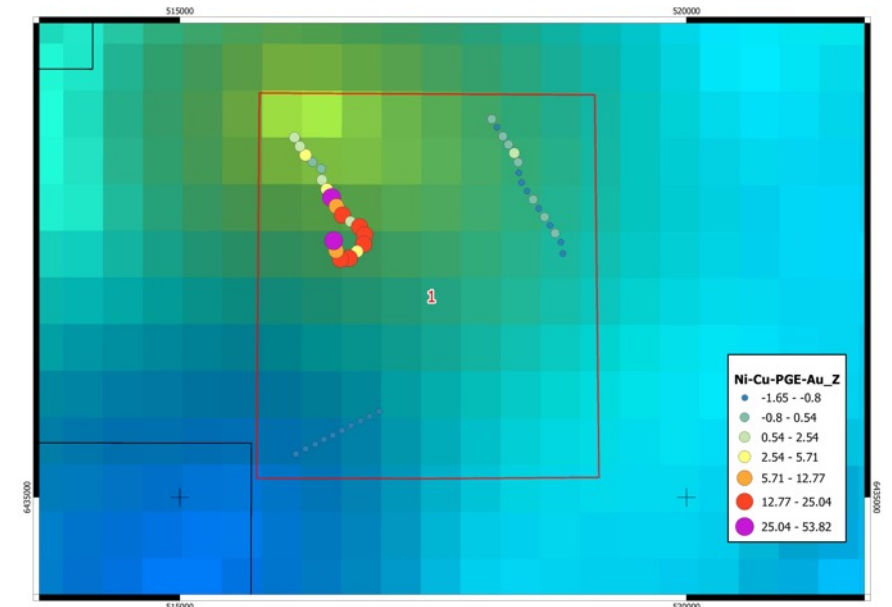
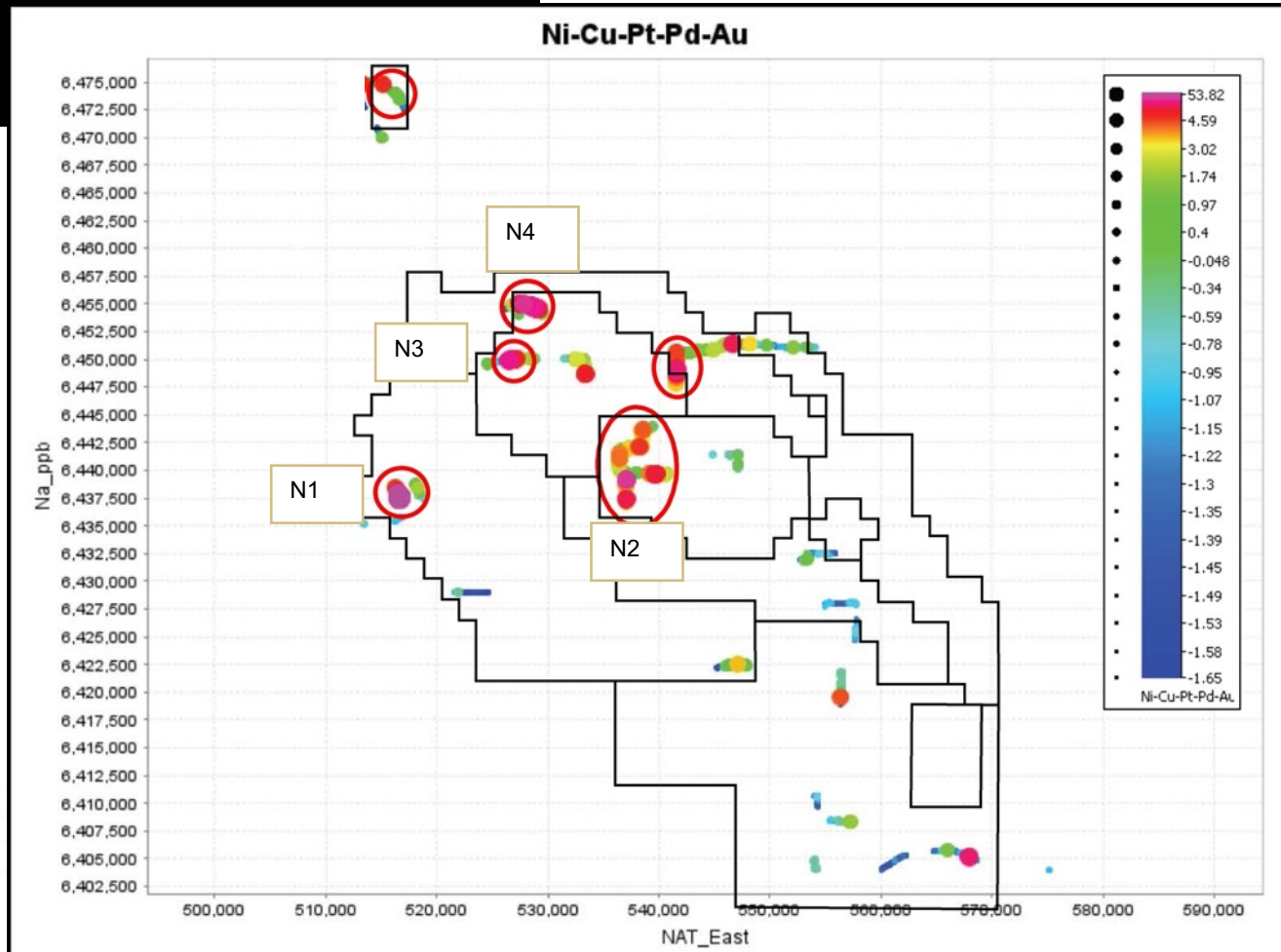
Julimar

Newleyine

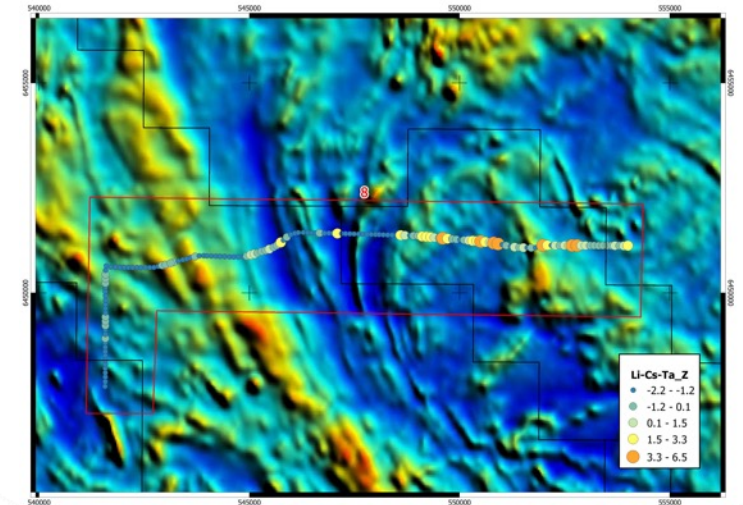
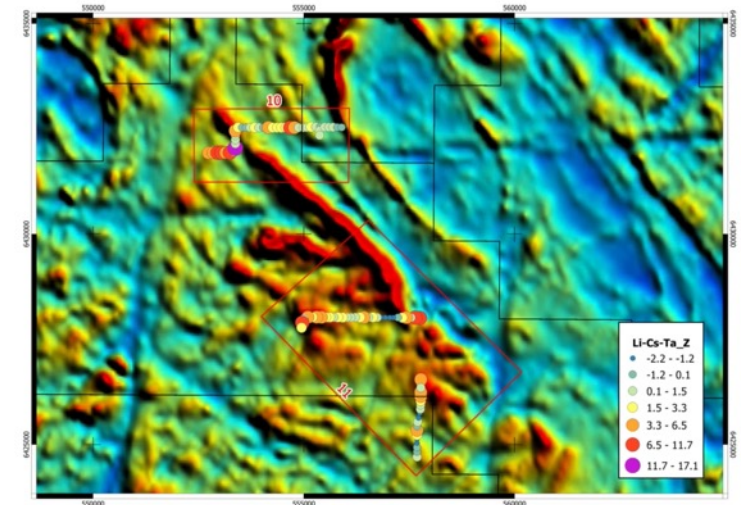
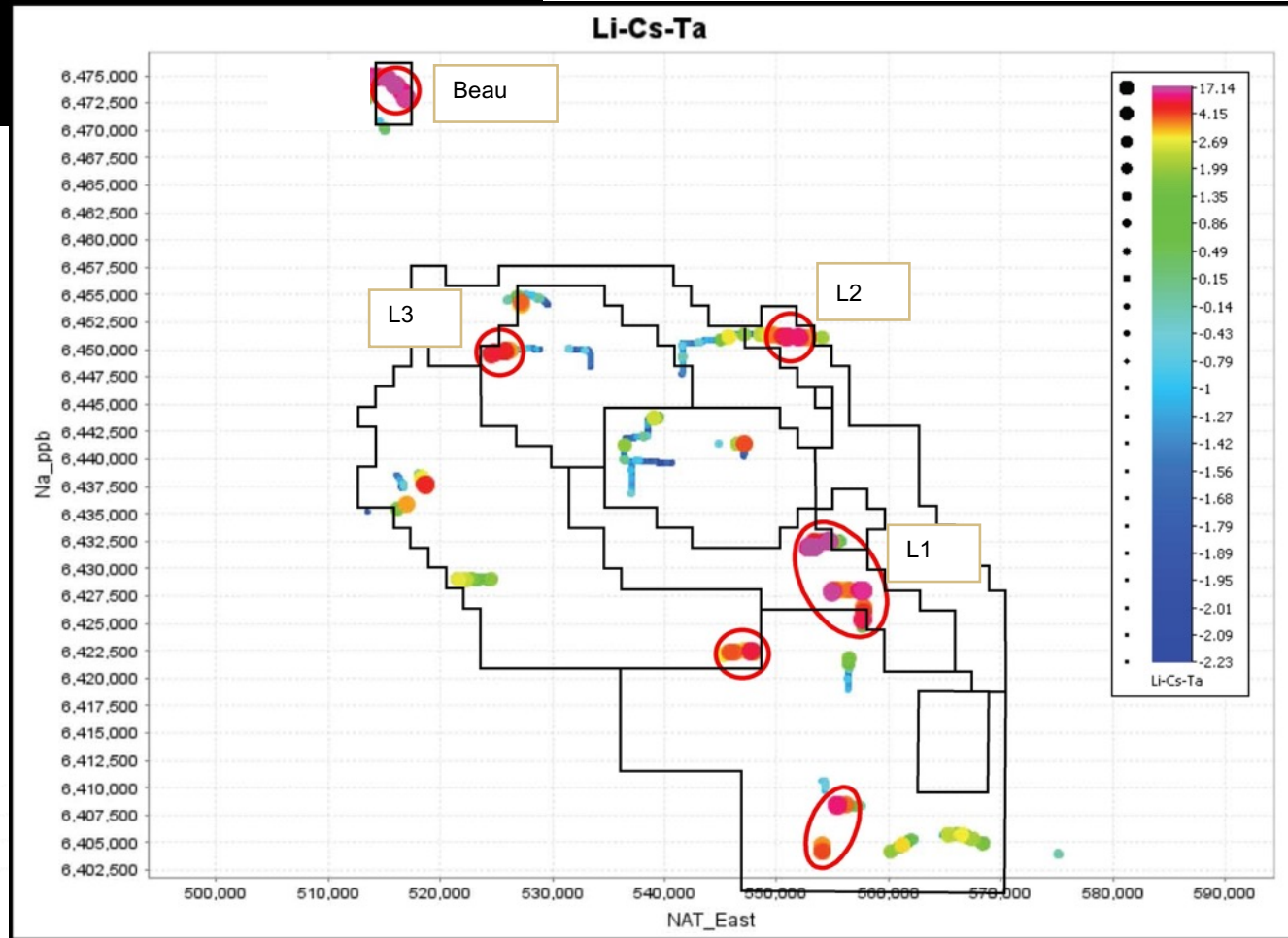


Arkun Project⁹

Ni-Cu-PGM



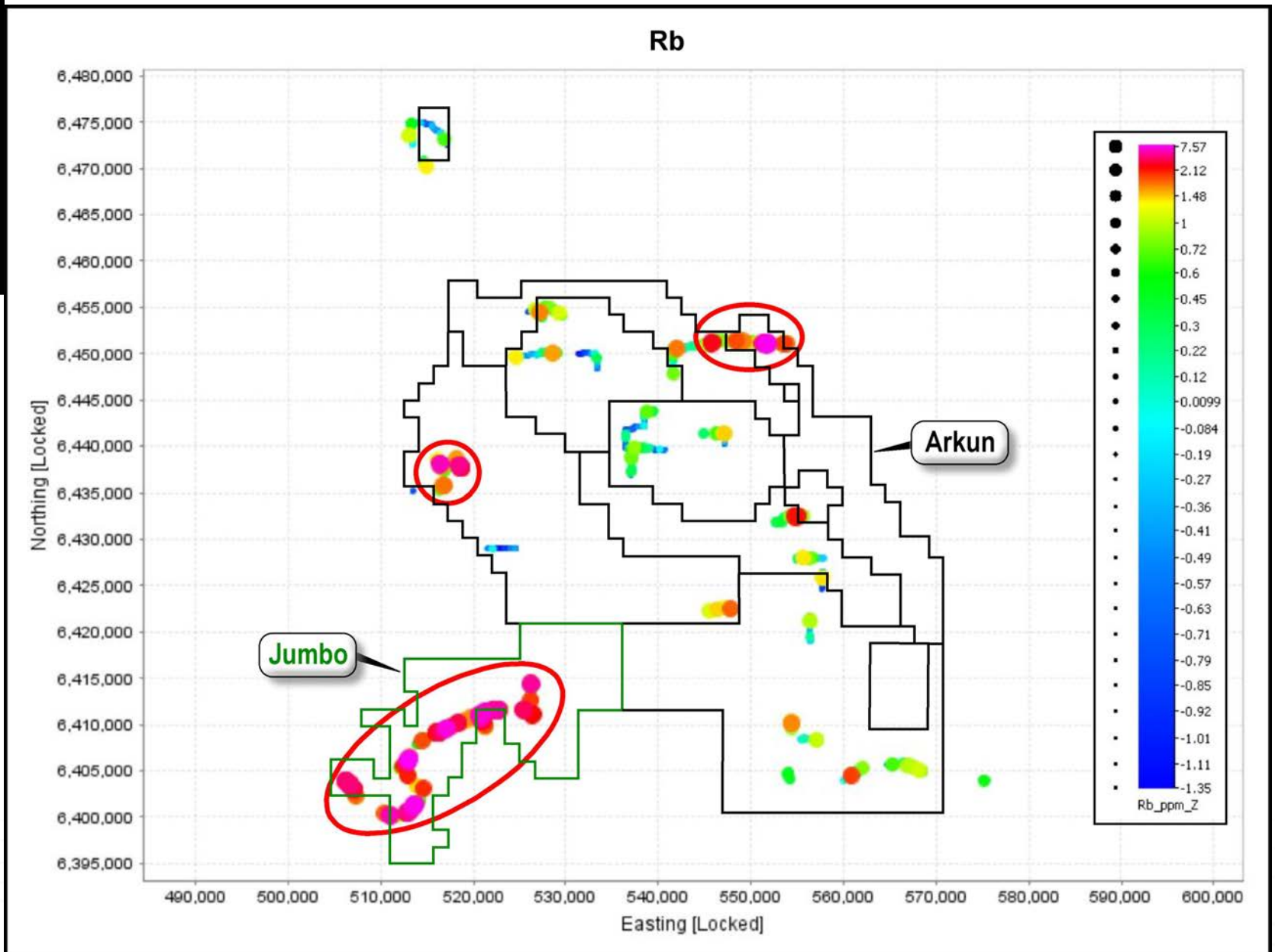
Arkun Project⁹ LCT Pegmatites



Jumbo JV Project¹²

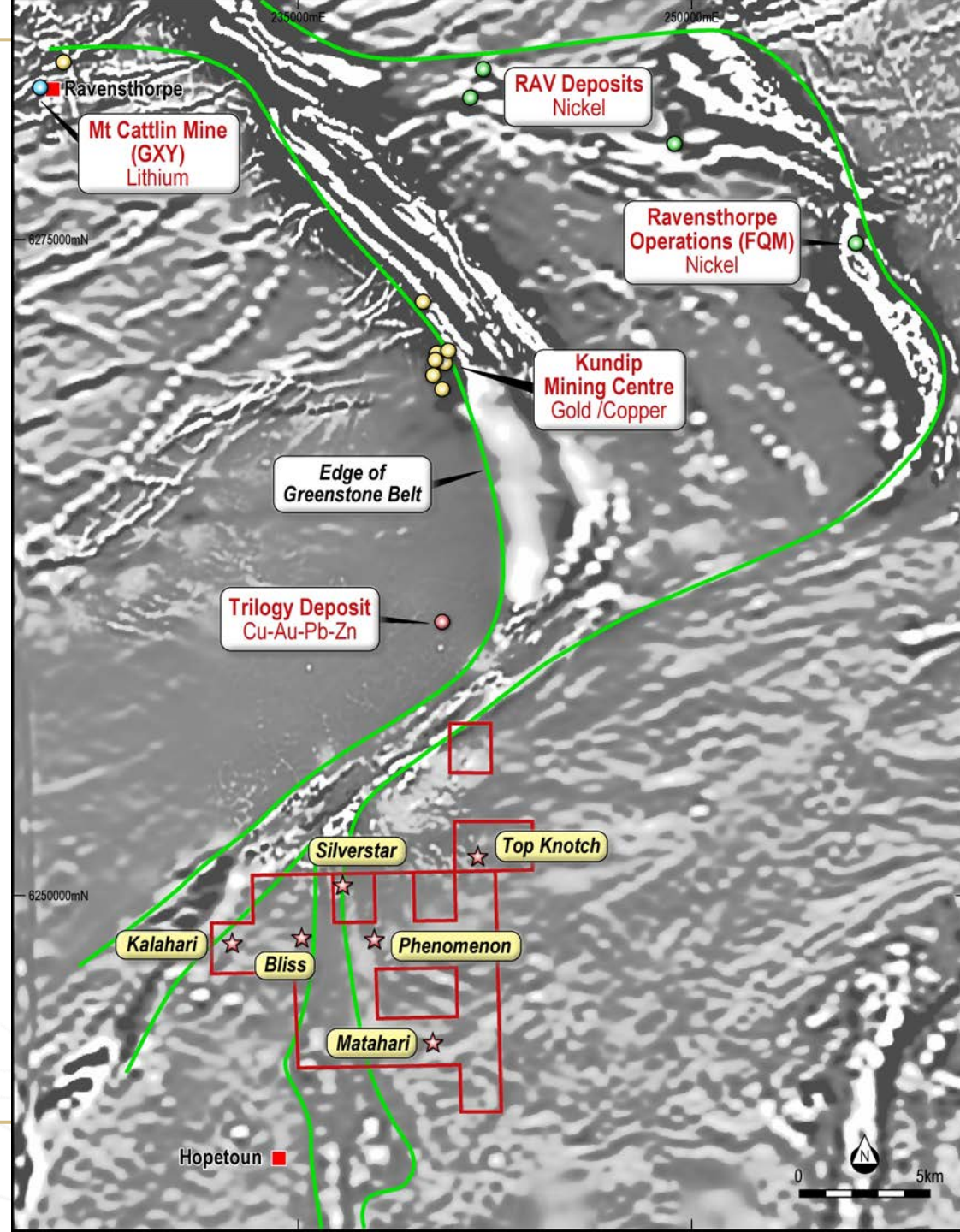
All of the above!

- Land Access Agreements underway.
- Soil geochemistry survey to start April.
- Airborne EM mid year
- Drilling late 2022-23



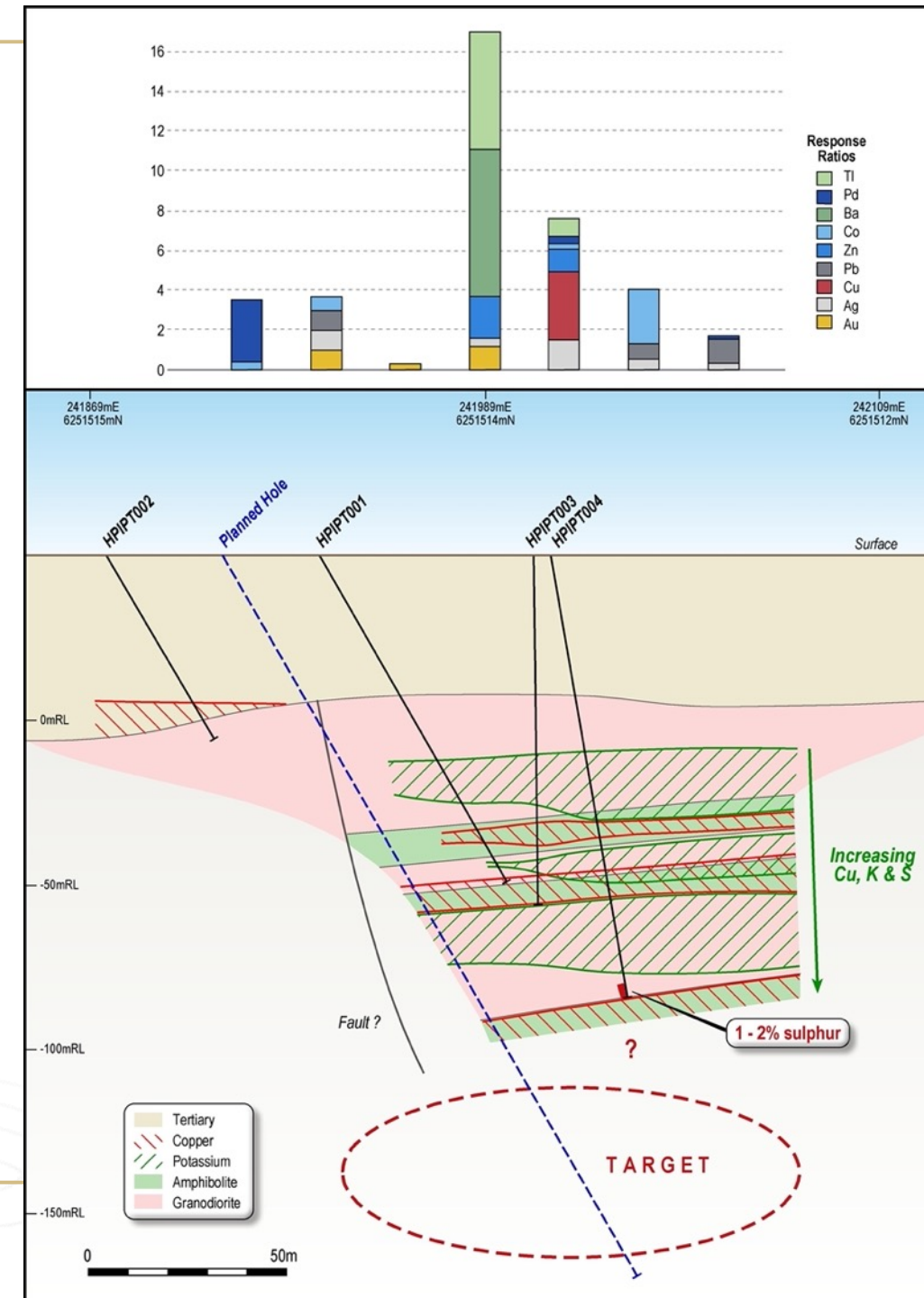
Hopetoun: Ravensthorpe Extended

- Extension of the Ravensthorpe Greenstone Belt
- Testing the geophysics!

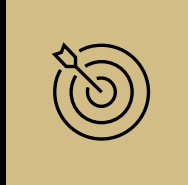


Hopetoun: Top Knotch Copper-Gold¹⁰

- Mafic layers with elevated copper
- Increasing potassium alteration down hole
- Extensive fine grained pyrite in bottom six metres
- Diamond drilling in progress.



Next Steps and Strong News Flow



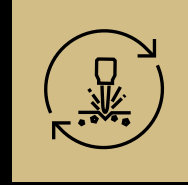
Drilling in 2022

Doonia (IPT 100%)

- Drill results awaited
- Follow up drilling mid-2022

Hopetoun (IPT: 80%)

- Diamond drilling in progress



Soil geochemistry and geophysical surveys

Arkun, WA (IPT: 100%)

- Follow up ground work in progress

Other Projects

- Jumbo, Narryer Dalgara
- Other acquisitions and JV
- First pass soil results being interpreted



Portfolio Rationalisation

- Broken Hill JV IGO
- Commonwealth for sale
- Clermont: 1M shares in A8G
- Orange Minerals Ltd \$180K cash and \$54k shares.
- Sale of Blackridge?

JORC Compliance

The information in this presentation relating to Exploration Results has been extracted from the following reports:

| ASX Release Date | Title of ASX Release |
|--------------------------------|---|
| 1. 9 November 2021 | IGO to farm-in to the Broken Hill Ni-Cu-PGM Project |
| 2. 23 February 2016 | Very high grade PGM nickel-copper in massive sulphide at Platinum Springs |
| 3. 2 December 2020 | High grade Ni-Cu-PGE at Plat Central, Broken Hill |
| 4. 3 March 2022 | Large EM Conductor identified at Platinum Springs |
| 5. 22 December 2020 | Rockwell Prospect drilling results |
| 6. 17 November 2020 | New gold project in the Eastern Goldfields: Doonia, WA |
| 7. 8 December 2021 | Impact significantly expands its WA Projects |
| 8. 10 June 2020 | Expansion of the Arkun Ni-Cu-PGE Project east of Perth |
| 9. 21 September 2021 | Outstanding Soil Geochemistry Results at Arkun |
| 10. 27 October 2021 | REE and Rb Soil geochemistry Results at Arkun |
| 11. 21 December 2021 | Company update: Drill programmes |
| 12. 8 th March 2022 | Outstanding soil geochemistry results at Jumbo |

Disclaimer

What You Should Know

Find out more – This presentation is being used as a presenter's aid with summarised information. See Impact's other periodic and continuous disclosure announcements lodged with the Australian Securities Exchange, which are available at www.asx.com.au or www.impactminerals.com.au, for more information.

Third party information – Impact does not make any representations as to the accuracy or otherwise of third party information, including where projections are given.

Forward-looking statements – Within this presentation there may be certain forward-looking statements, opinions and estimates. These are based on assumptions and contingencies which are subject to change without notice and are not guarantees of future performance. Impact assumes no obligation to update such information.

Taking action – Please undertake your own evaluation of the information in this presentation and contact your professional advisers if you wish to buy or sell Impact shares.

Exploration Results: *The review of exploration activities and results contained in this report is based on information compiled by Dr Mike Jones, a Member of the Australian Institute of Geoscientists. He is a director of the company and works for Impact Minerals Limited. He has sufficient experience which is relevant to the style of mineralisation and types of deposits under consideration and to the activity which he is undertaking to qualify as a Competent Person as defined in the 2012 edition of the Australasian Code for Reporting of Exploration Results, Mineral Resources and Ore Reserves (the JORC Code). Mike Jones has consented to the inclusion in the report of the matters based on his information in the form and context in which it appears.*

The ASX Releases referenced below on on the Impact Minerals website at www.impactminerals.com.au. The Company confirms that it is not aware of any new information or data that materially affects the information included in the most recent market announcement for each project, and in the case of Mineral Resources and Ore Reserves, that all material assumptions and technical parameters underpinning the estimates in the relevant market announcement continue to apply and have not materially changed. The Company confirms that the form and context un which the Competent Person's findings are presented have not materially changed from the original market announcement.

Competent Person Statement and JORC Compliance