

11 April 2022

Tietto delivers maiden Measured gold resource at Abujar, de-risking first two years of gold production

Highlights:

- Abujar's maiden **Measured** gold resources of **7.7Mt @ 1.4 g/t Au for 350,000oz** de-risk first two years of gold production, based on infill drilling at **AG Core to an average vertical depth of 110m**
- **Measured** and **Indicated** gold resources now total **26.2Mt @ 1.4 g/t Au for 1.15Moz¹** at **AG Core**, accounting for **95%** of the **DFS² AG Core** in-pit inventory (undiluted)
- Updated **MRE³** for Abujar **98.7Mt @ 1.1 g/t Au for 3.45Moz (+3% oz Au)**:
 - ✓ **AG** mineral resources total **55.2Mt @ 1.4 g/t Au for 2.43Moz (-0.9% oz Au)**
 - ✓ **APG** mineral resources total **41.9Mt @ 0.7 g/t Au for 0.96Moz (+10.5% oz Au)**
 - ✓ **SG** mineral resources total **1.6Mt @ 1.2 g/t Au for 0.06Moz (+213% oz Au)**
- Updated **MRE** is considered robust and includes classification of **Measured** resources informed from detailed and shallow close-spaced drilling
- High-grade core between sections 14 to 29 now reports **23Mt @ 2.22 g/t Au for 1.7Moz** (undiluted) using a 0.8 g/t Au cut-off for all classifications
- Within the DFS AG Core pit using a 0.6 g/t Au cut-off, the updated Resource Model reports **16.3Mt @ 2.04 g/t Au for 1.1Moz** (undiluted) with 94% of these ounces within Measured and Indicated categories⁴:
 - ✓ 4.3Mt @ 2.1 g/t Au for 0.3Moz (Measured)
 - ✓ 11.0Mt @ 2.0 g/t Au for 0.7Moz (Indicated)
 - ✓ 0.9Mt @ 2.0 g/t Au for 0.1Moz (Inferred)
- Abujar mill throughput now set at **4.5Mpta (+12.5%)** fresh ore, above the 4Mpta DFS nameplate. Increase in mill throughput over DFS achieved utilising excess capacity in the SAG mill and adding additional CIL tank (installing eight tanks) for the gold plant
- Tietto plans to update Abujar's LOM production plan in Q2 2022 using the **updated MRE, increased mill throughput** and **higher gold prices⁵** (spot price is +35% greater than US\$1407/oz used in the DFS), targeting a material increase to existing LOM production
- Abujar gold plant construction is on target for **first gold in Q4 CY2022**

¹ Using 0.25 g/t Au COG

² Tietto Minerals ASX Announcement 5 October 2021

³ Mineral Resource Estimate (MRE)

⁴ Figures may not tally due to rounding

⁵ Current spot price US\$1,947/oz source: kitco hourly gold bids April 9 1800EDT

- **Diamond drilling continues** to further de-risk Abujar’s LOM production plan and drive resource growth using our fleet of six diamond drill rigs:
 - ✓ Infill at AG South for Measured resources within first two years of production
 - ✓ Drill testing of targets located within 10km radius of proposed AG mill
 - ✓ Drill testing high priority regional targets
- Tietto has completed the first tranche of a two-tranche **A\$130 million placement** to fully fund Abujar Gold Project construction with **no debt**.

West African gold explorer and developer Tietto Minerals Limited (ASX: TIE) (**Tietto** or the **Company**) is pleased to report an updated Mineral Resource Estimate for its Abujar Gold Project in Côte d’Ivoire, West Africa, with maiden Measured gold Resources added to its 3.45Moz gold inventory as it progresses towards becoming West Africa’s next gold mine.

Tietto Managing Director, Dr Caigen Wang, said: *“We have delineated a Measured resource of 350,000oz at shallow depth within the AG Core DFS pit, for the initial two years of gold production. This significantly de-risks Abujar and our mine planning team expects to declare Proven Ore Reserves for the project this quarter.*

*“Measured Resources provide an incredible tick of confidence for our Abujar gold project. These are robust estimates with conservative high-grade cuts and search restrictions applied to manage the influence of the exceptionally high-gold grades present at Abujar. In an extreme case where diamond drilling intersected **1.1m @ 2,853g/t Au⁶**, the highest top-cut grade of 125g/t for the AG deposit represents only 4.4% of this intersection grade.*

“We intend to refresh Abujar’s LOM production plan using the updated Mineral Resource. Within the DFS pit at AG Core, combined Measured and Indicated resources now account for 95% of mineral resources, with just 5% remaining as Inferred resources.

“In addition, throughput optimisation work during the design stage has lifted the Abujar mill throughput by +12.5% to 4.5Mtpa (fresh ore) over 4Mtpa used in the DFS.

“Spot gold prices are now 35% greater than the US\$1,407/oz used for the DFS. We expect this will materially increase both the Open Pit Ore Reserve and LOM mine inventory.

“I thank our exploration team and RPM Global for the work required to deliver this result.

“Tietto has an experienced team on board to deliver Abujar on time and on budget. We are on track to deliver another mineral resource update and first gold at Abujar later this year. Shareholders can expect further updates from our aggressive diamond drilling program as we advance our dual strategy of ‘drill and build’.”

⁶ Refer ASX release 24 January 2022

Table 1: Updated Abujar Gold Project Mineral Resource

Area	Class	Oxide			Transition			Fresh			Total		
		Quantity (Mt)	Au (g/t)	Au (Moz)	Quantity (Mt)	Au (g/t)	Au (Moz)	Quantity (Mt)	Au (g/t)	Au (Moz)	Quantity (Mt)	Au (g/t)	Au (Moz)
AG	Measured	0.1	1.4	0.01	0.5	1.3	0.02	7.1	1.4	0.32	7.7	1.4	0.35
	Indicated	0.5	1.0	0.02	1.8	1.1	0.06	28.1	1.3	1.19	30.4	1.3	1.27
	Inferred	0.3	0.9	0.01	1.4	0.8	0.04	15.4	1.5	0.76	17.1	1.5	0.81
	Total	0.9	1.0	0.03	3.7	1.0	0.12	50.6	1.4	2.27	55.2	1.4	2.43
APG	Indicated	0.5	0.7	0.01	1.9	0.7	0.04	6.1	0.8	0.15	8.5	0.7	0.20
	Inferred	1.3	0.7	0.03	5.1	0.7	0.11	27.0	0.7	0.62	33.3	0.7	0.76
	Total	1.8	0.7	0.04	7.0	0.7	0.15	33.1	0.7	0.77	41.9	0.7	0.96
SG	Inferred	0.08	0.74	0.002	0.15	1.09	0.01	1.3	1.3	0.05	1.6	1.2	0.06
Grand Total		2.8	0.8	0.07	10.8	0.8	0.28	85.1	1.1	3.10	98.7	1.1	3.45

As detailed in the accompanying Statement of Mineral Resources, Table 10 Statement of Mineral Resources by Deposit as at 28th February 2022 Reported at 0.25 g/t Au cut off within pit shells; and 1.1 g/t Au cut off below the pit shells for AG; and 0.3 g/t Au cut off within pit shells, and 1.1 g/t Au cut off below the pit shells for APG, and 0.25 g/t to a depth of 120m for SG (2000 USD Pit).

Gold mineralisation at Abujar remains open along strike and at depth and further drilling is required to test the limits. Large portions of the Abujar main shear that are bounded by gold mineralisation remain to be drilled and systematic drill testing is planned (Figure 1).

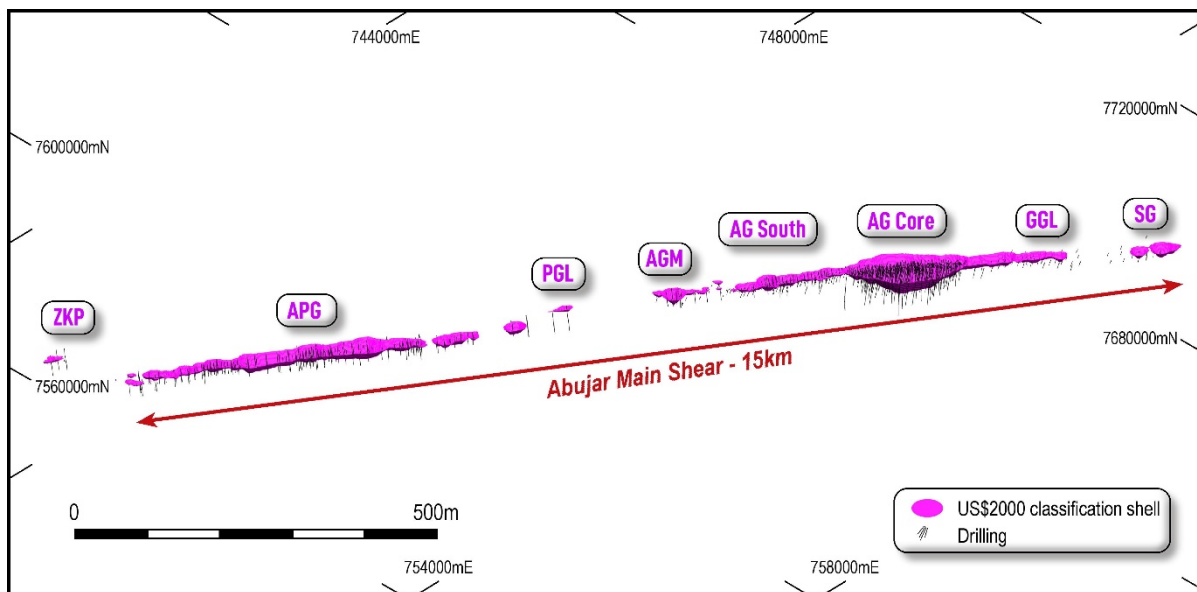


Figure 1: Abujar Oblique Long Section showing updated Resource Model classification shell and drilling

An oblique long section of the updated AG Resource Model is presented below in Figure 2. The high-grade core between sections 14 to 29 now reports 23Mt @ 2.22 g/t Au for 1.7Moz (undiluted) using a 0.8 g/t Au cut-off for all classifications. Within the DFS AG Core pit using a 0.6 g/t Au cut-off, the updated Resource Model reports 16.3Mt @ 2.04 g/t Au for 1.1Moz (undiluted) with 94% of these ounces within Measured and Indicated categories⁷:

- 4.3Mt @ 2.1 g/t Au for 0.3Moz (Measured)
- 11.0Mt @ 2.0 g/t Au for 0.7Moz (Indicated)
- 0.9Mt @ 2.0 g/t Au for 0.1Moz (Inferred).

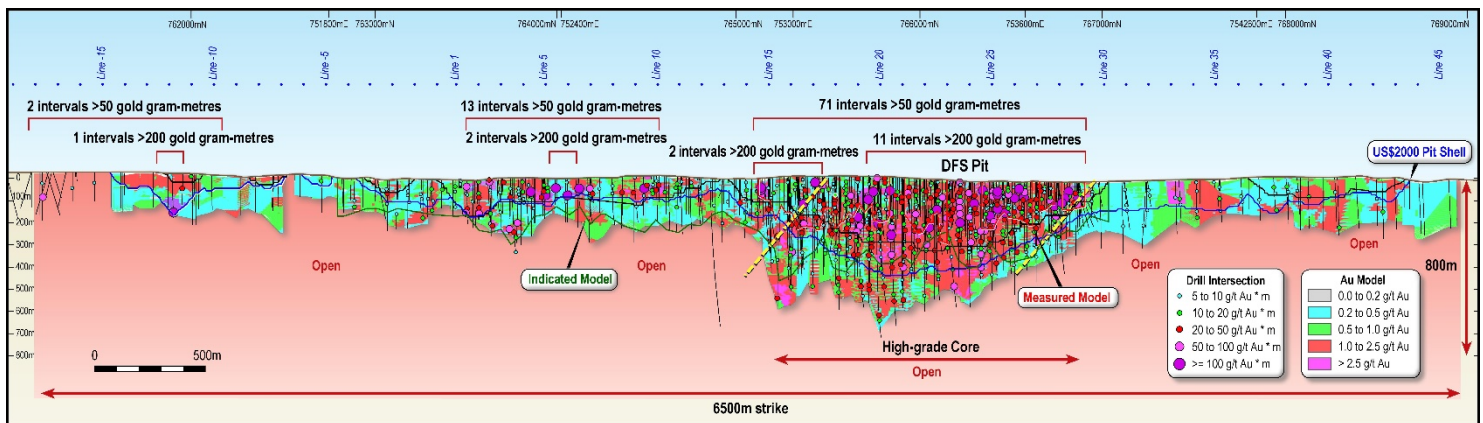


Figure 2: AG Oblique Long Section showing updated Resource Model

An oblique long section of the updated APG Resource Model is presented below (Figure 3).

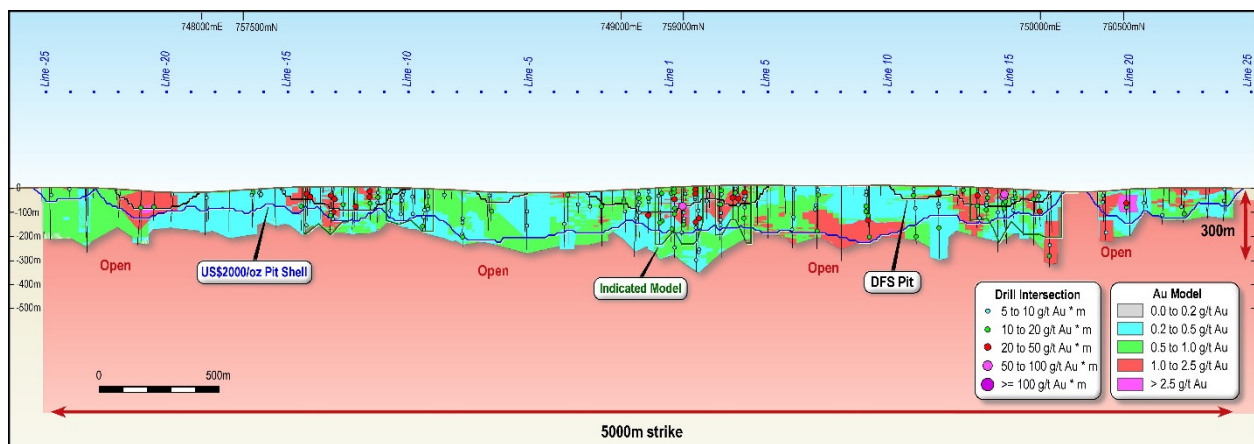


Figure 3: APG Oblique Long Section showing updated Resource Model

⁷ Numbers may not tally due to rounding

Tietto’s aggressive drill programs have delivered rapid growth of gold Mineral Resources at Abujar (Figure 4). This update focused on de-risking Mineral Resources to allow the classification of Measured Resources at AG (Core).

Measured Resources were based on drill sample spacing of 20m to 25m by 20m to 25m based on geospatial analysis with 25m being approximately 40% of the effective sill. Infill drilling on 20m to 25m by 20m to 25m pierce points (down-dip) has confirmed the continuity of both the grade and geology in-line with the expectation of the style of mineralisation particularly given the high gold nugget observed in all phases of drilling. Of significance, the infill drilling supported the interpretation of the grades and geological structures over several hundred meters in the target areas, with the final phase of drilling understood to be planned to infill the remaining areas of the first two years of production. RPM understands that further closed-spaced grade control drilling is planned prior to mining to further confirm local variability to support short term planning during mining.

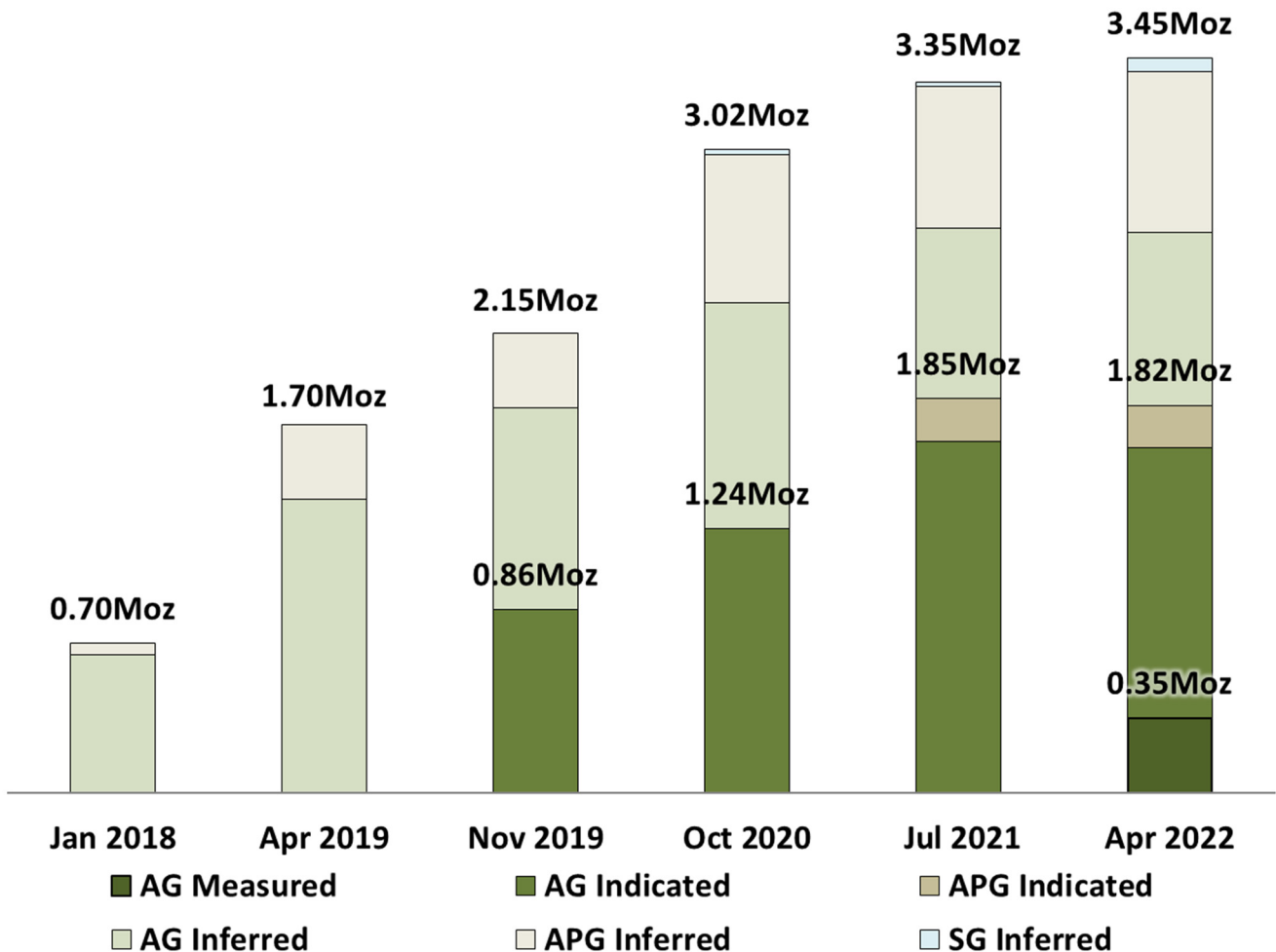


Figure 4: Abujar Gold Project Mineral Resource growth (Measured, Indicated and Global ounces annotated)

Summary of global resource ounces using a 0.25 g/t Au cut-off from surface by deposit and 100m depth increments is presented below in Figure 5⁸.

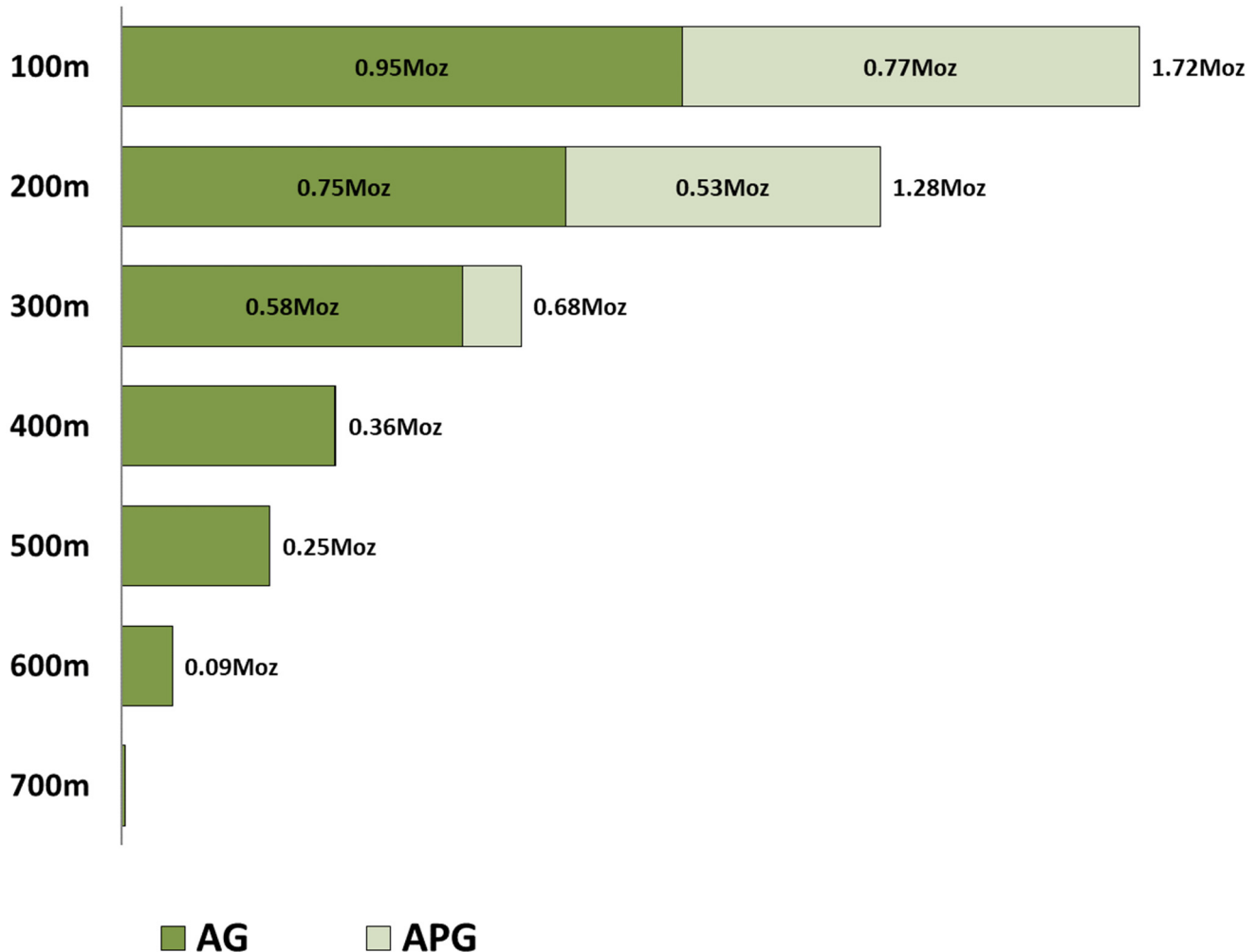


Figure 5: AG and APG Mineral Resources by 100m level at a 0.25 g/t Au cut-off

Tietto intends to update Abujar’s LOM production plan to take account of the updated Mineral Resource, greater mill throughput which is up by +12.5% to 4.5Mtpa (fresh ore) over 4Mtpa used in the DFS, and higher spot gold prices, that are up to 35% greater than the US\$1,407/oz used for the DFS. Tietto believes the results of this work could materially increase both the Open Pit Ore Reserve and LOM mine inventory with results from this study expected by the end of Q2 CY2022. Figure 6 and Figure 7 illustrate the sensitivity of the project to gold price.

⁸ RPM recommends that the Mineral Resource be reported using the criteria shown in Table 10. It is highlighted that the figure above is not a Statement of Mineral Resources and does not include the use of pit shells to report the quantities rather the application of a 0.25 g/t Au cut-off grade. As such variations with Table 10 will occur and a direct comparison is not able to be completed.

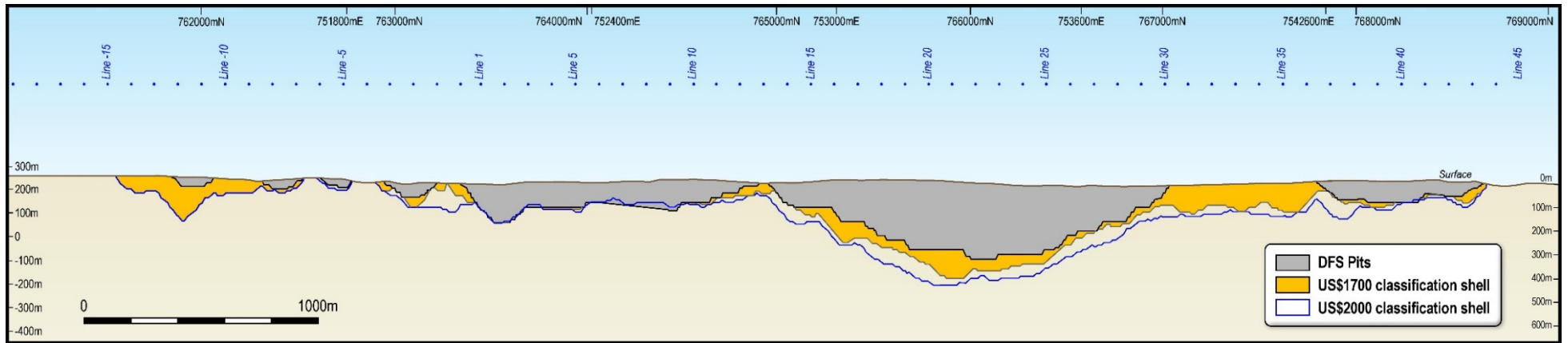


Figure 6: AG Oblique Long Section showing DFS pits and classification shell at US\$1,700/oz and US\$2,000/oz

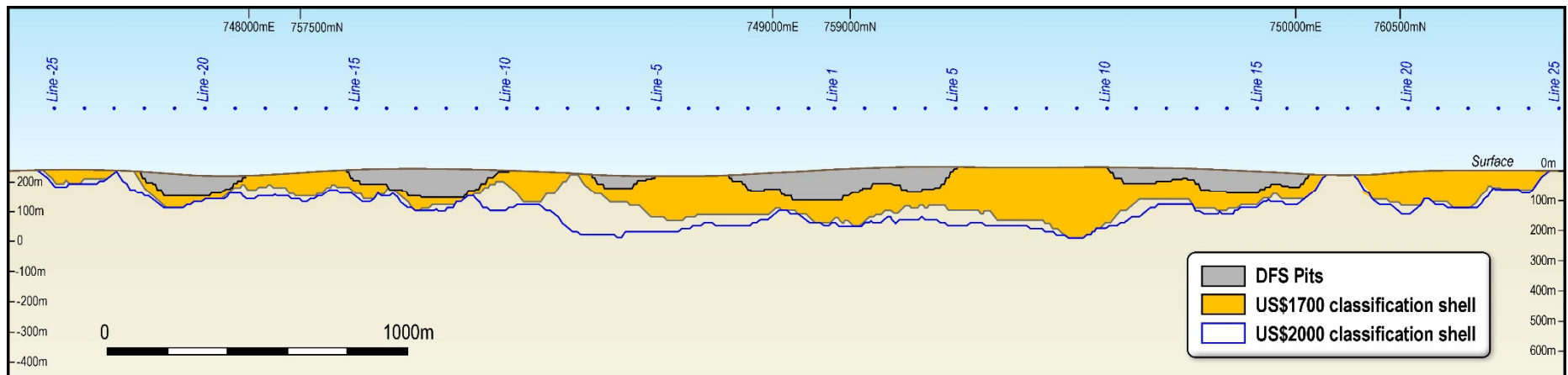


Figure 7: APG Oblique Long Section showing DFS pits and classification shell at US\$1,700/oz and US\$2,000/oz

Infill Drill Program

Tietto systematically diamond drill tested Indicated and Inferred Mineral Resources at the AG and APG deposits since the July 2021 Mineral Resource model update⁹.

Tietto's drilling teams completed 378 holes for 71,159.0m across a range of deposits and prospects at Abujar (**Table 2**). Tietto drilled 267 holes for 48,994.5m at AG; 22 holes at AG South (Sections 0-13) and 245 holes at AG Core (Sections 14-30). Smaller drill programs designed for resource growth were undertaken at AGM, PGL, ZKP and AGM. Sterilisation drilling for a tailings storage facility (TSF) was completed at AG West.

Table 2: New diamond drilling completed at Abujar since July 2021

Deposit/Prospect	Holes	Total Metres	Ave Depth (m)	Max Depth (m)
AG	267	48,994.5	183.5	746.5
AG South (Sections 0-13)	22	4,696.5	213.5	370.5
AG Core (Sections 14-30)	245	44,298.0	180.8	746.5
AGM	15	3,355.0	223.7	327
GGL	7	1,647.0	235.3	301.5
AG WEST	45	8,787.0	195.3	361
PGL	30	5,074.5	169.2	275
ZKP	14	3,301.0	235.8	370.5
Total	378	71,159.0	188.3	746.5

This recently completed drill program met its goals of increasing the level of confidence in Mineral Resources. Measured Resources have been declared at AG Core within the first two years of gold production from the Abujar Ore Reserves of 34.4Mt @ 1.3 g/t Au for 1.45Moz that sit inside the Life of Mine (LOM) mining inventory of 44.9Mt @ 1.2g/t Au for 1.7Moz.¹⁰

Infill drilling was completed at AG Core on 25m line spacings between Section Lines 14 to 30 across the AG Core to a depth of ~120m vertical.

Gold mineralisation at AG Core is still open at depths well below open pit limits. Tietto will plan further drilling to assess the potential for underground mining at Abujar below the planned DFS open pit.

Significant intersections (≥ 20 gold gram metres) from the infill program including those from this release are presented in Table 3.

Table 3: AG Core - significant intersections from infill program greater than 20 gold gram metres¹¹

⁹ ASX Announcement dated 12 July 2021

¹⁰ ASX Announcement dated 5 October 2021

¹¹ 0.4 g/t Au cut off used with max 3m internal dilution and no top cut applied

Hole id	From	To	Length	g/t Au	gold gram metres	ASX Reporting
ZDD895	38	46	8	393.59	3,149	24 Jan 2022
ZDD866	83	93	10	51.75	518	25 Feb 2022
ZDD894	31.6	34	2.4	153.49	368	14 Feb 2022
ZDD685	54	56	2	143.77	288	13 Oct 2021
ZDD687	69	85	16	17.60	282	22 Sep 2021
ZDD696	125	132	7	30.67	215	21 Oct 2021
ZDD895	50	62	12	14.61	175	24 Jan 2022
ZDD870	38	43	5	33.86	169	7 Feb 2022
ZDD859	37	47	10	16.53	165	20 Jan 2022
ZDD899	64	76	12	11.99	144	14 Feb 2022
ZDD665	97	119	22	5.62	124	13 Oct 2021
ZDD596	85	88	3	35.65	107	10 Sep 2021
ZDD685	61	67	6	17.01	102	13 Oct 2021
ZDD703	187	195	8	12.43	99	12 Nov 2021
ZDD617	66	73	7	12.48	87	10 Sep 2021
ZDD734	83	90	7	11.87	83	30 Nov 2021
ZDD704	214	232	18	4.36	78	12 Nov 2021
ZDD703	208	220	12	6.10	73	12 Nov 2021
ZDD730	91	96	5	14.44	72	22 Dec 2021
ZDD814	254	261	7	9.38	66	30 Nov 2021
ZDD806	11	29	18	3.67	66	20 Jan 2022
ZDD702	227	236	9	6.97	63	12 Nov 2021
ZDD633	60	78	18	3.30	59	22 Sep 2021
ZDD701	120	128	8	7.17	57	30 Nov 2021
ZDD705	0	1	1	55.13	55	12 Nov 2021
ZDD724	82	91	9	6.03	54	22 Dec 2021
ZDD884	118	120	2	26.07	52	7 Feb 2022
ZDD770	74	79	5	10.16	51	22 Dec 2021
ZDD760	234	243	9	5.47	49	22 Dec 2021
ZDD853	35	43	8	6.07	49	14 Feb 2022
ZDD691	79	87	8	5.95	48	21 Oct 2021
ZDD699	162	176	14	3.27	46	12 Nov 2021
ZDD606	143	162	19	2.33	44	10 Sep 2021
ZDD750	196	200	4	10.75	43	30 Nov 2021
ZDD854	137	146	9	4.61	42	7 Feb 2022
ZDD671A	136	150	14	2.87	40	13 Oct 2021
ZDD871	105	121	16	2.51	40	7 Feb 2022
ZDD698	178	189	11	3.58	39	12 Nov 2021
ZDD892	64	79	15	2.57	38	7 Feb 2022
ZDD670	138	139	1	36.82	37	22 Dec 2021
ZDD727	61	72	11	3.34	37	30 Nov 2021
ZDD869	30	34	4	8.83	35	7 Feb 2022
ZDD799	18	29	11	3.09	34	22 Dec 2021
ZDD774	248	252	4	8.30	33	22 Dec 2021
ZDD882	52	54	2	16.40	33	7 Feb 2022

Hole id	From	To	Length	g/t Au	gold gram metres	ASX Reporting
ZDD707	201	228	27	1.19	32	12 Nov 2021
ZDD890	19	39	20	1.60	32	7 Feb 2022
ZDD889	71	76	5	6.13	31	7 Feb 2022
ZDD805	105	115	10	3.04	30	20 Jan 2022
ZDD796	144	154	10	3.01	30	20 Jan 2022
ZDD790	117	131	14	2.14	30	20 Jan 2022
ZDD817	112	126	14	2.14	30	20 Jan 2022
ZDD607	93	110	17	1.68	29	10 Sep 2021
ZDD891	63	67	4	7.29	29	7 Feb 2022
ZDD707	237	238	1	28.39	28	12 Nov 2021
ZDD658	71	77	6	4.69	28	13 Oct 2021
ZDD691	112	115	3	9.32	28	21 Oct 2021
ZDD881	79	82	3	9.38	28	7 Feb 2022
ZDD865	71	79	8	3.43	27	14 Feb 2022
ZDD894	65	76	11	2.48	27	14 Feb 2022
ZDD899	33.13	34	0.87	31.20	27	14 Feb 2022
ZDD629	34	41	7	3.66	26	10 Sep 2021
ZDD703	149	151	2	12.64	25	12 Nov 2021
ZDD618	91	98	7	3.56	25	10 Sep 2021
ZDD679	18	30	12	2.07	25	22 Sep 2021
ZDD636	101	105	4	6.11	24	22 Sep 2021
ZDD636	70	74	4	6.02	24	22 Sep 2021
ZDD608	104	113	9	2.64	24	10 Sep 2021
ZDD668	108	109	1	23.70	24	13 Oct 2021
ZDD668	168	169	1	23.52	24	13 Oct 2021
ZDD608	167	173	6	3.88	23	10 Sep 2021
ZDD589	56	68	12	1.91	23	10 Sep 2021
ZDD747	40	46	6	3.82	23	22 Dec 2021
ZDD682	97	105	8	2.80	22	22 Dec 2021
ZDD688	157	159	2	11.14	22	22 Dec 2021
ZDD637	79	90	11	1.98	22	22 Sep 2021
ZDD859	113	114	1	21.87	22	20 Jan 2022
ZDD706A	113	129	16	1.34	21	12 Nov 2021
ZDD705	148	151	3	7.01	21	12 Nov 2021
ZDD704	146	157	11	1.90	21	12 Nov 2021
ZDD682	181	191	10	2.06	21	22 Dec 2021
ZDD750	225	231	6	3.33	20	30 Nov 2021
ZDD615	11	19	8	2.45	20	10 Sep 2021
ZDD662A	66	67	1	19.52	20	13 Oct 2021
ZDD854	53	62	9	2.24	20	7 Feb 2022
ZDD890	11	12	1	20.23	20	7 Feb 2022

Drilling intersected good widths and grades in assays received to date with these new results, increasing the tally to 71 intervals greater than 50 gold gram metres, including 13 intervals greater than 200 gold gram metres at **AG Core (Table 4)**.

Table 4: AG Core - significant intersections greater than 50 gold gram metres¹²

Hole id	From	To	Length	g/t Au	gold gram metres	Section
ZDD895	38	46	8	393.59	3,149	14B
ZDD866	83	93	10	51.75	518	29A
ZDD035	76	83	7	57.79	405	26B
ZDD894	31.6	34	2.4	153.49	368	17A
ZDD084	55	62	7	41.76	292	24B
ZDD685	54	56	2	143.77	288	25A
ZDD687	69	85	16	17.60	282	19C
ZDD095	215	236	21	13.02	273	23B
ZDD043	111	127	16	16.31	261	27C
ZDD082	83	85	2	113.30	227	26
ZDD696	125	132	7	30.67	215	25A
ZDD028	39	57	18	11.72	211	28B
ZRC171	238	244	6	34.17	205	20
ZDD333	173	194	21	8.73	183	25B
ZDD895	50	62	12	14.61	175	14B
ZDD870	38	43	5	33.86	169	26A
ZDD859	37	47	10	16.53	165	28C
ZDD027	70	88	18	8.37	151	29
ZDD437	203	208	5	28.91	145	19
ZDD899	64	76	12	11.99	144	14C
ZRC172	108	128	20	6.56	131	19B
ZDD445	120	149	29	4.46	129	16B
ZDD665	97	119	22	5.62	124	24A
ZDD180	286	296	10	12.09	121	20B
ZDD058	179	186	7	15.50	109	25
ZDD596	85	88	3	35.65	107	28A
ZDD061	254	255	1	103.90	104	22
ZRC188	70	72	2	51.14	102	20B
ZDD685	61	67	6	17.01	102	25A
ZDD074	174	176	2	50.65	101	22B
ZDD703	187	195	8	12.43	99	23C
ZDD232	370	382	12	7.54	90	24B
ZRC164A	268	286	18	4.90	88	19
ZDD617	66	73	7	12.48	87	25C
ZDD096	173	178	5	17.27	86	23B
ZDD734	83	90	7	11.87	83	22C
ZDD704	214	232	18	4.36	78	18C
ZDD081	78	94	16	4.75	76	25
ARC17	48	58	10	7.46	75	17B
ZDD703	208	220	12	6.10	73	23C
ZDD730	91	96	5	14.44	72	18C
ZRC047A	208	218	10	7.16	72	23

¹² 0.4 g/t Au cut off used with max 3m internal dilution and no top cut applied

Hole id	From	To	Length	g/t Au	gold gram metres	Section
ZDD029	91	97	6	12.07	72	27C
ZDD212	401	406	5	14.23	71	20B
ZDD043	177	178	1	70.35	70	27C
ZDD092	147	153	6	11.49	69	23B
ZRC187	100	106	6	11.37	68	19B
ZDD096	122	124	2	33.53	67	23B
ZDD806	11	29	18	3.67	66	23A
ZDD187	259	267	8	8.26	66	24B
ZDD702	227	236	9	6.97	63	19A
ZRC169B	186	192	6	10.52	63	21C
ZRC037	66	68	2	31.10	62	25
ZDD104	364	370	6	9.91	59	16
ZDD633	60	78	18	3.30	59	21A
ZRC044	74	76	2	29.50	59	24
ZRD104	245	251	6	9.60	58	19
ZDD337A	257	267	10	5.75	58	24B
ZDD511	536	540	4	14.37	57	23
ZDD235	440	447	7	8.16	57	24B
ZDD701	120	128	8	7.17	57	25A
ZDD180	317	323	6	9.35	56	20B
ZDD705	0	1	1	55.13	55	19C
ZRC188	252	254	2	27.70	55	20B
ZDD058	194	198	4	13.63	55	25
ZDD724	82	91	9	6.03	54	22C
ZDD093	0	2	2	26.33	53	23B
ZDD080	54	56	2	26.05	52	26B
ZDD884	118	120	2	26.07	52	28C
ZDD770	74	79	5	10.16	51	14C
ZRC174	240	250	10	5.00	50	16B

Next Steps – Infill Drilling AG South

Tietto intends to continue its infill program to de-risk and increase confidence in the Mineral Resources making up the early years of production. Drilling has already started at AG South targeting Indicated Resources for conversion to Measured. At time of writing, Tietto had drilled 81 holes for 13,445m (awaiting assay results) as part of a 20,000m diamond drill program. It has designed a smaller targeted program of ~4,000m for AG Core to allow for further increases to Measured Resources in the next MRE update.

1. Project Location and Tenure

Côte d'Ivoire

Abujar Gold Project (Figure 8) in Côte d'Ivoire can be accessed by typical regional roads which vary in quality from good quality tarred and regional gravel roads to lesser quality dirt roads from local villages. The local roads, which would require upgrading to support mining operations, are accessible year-round and suitable to support ongoing exploration teams and associated equipment including drill rigs.

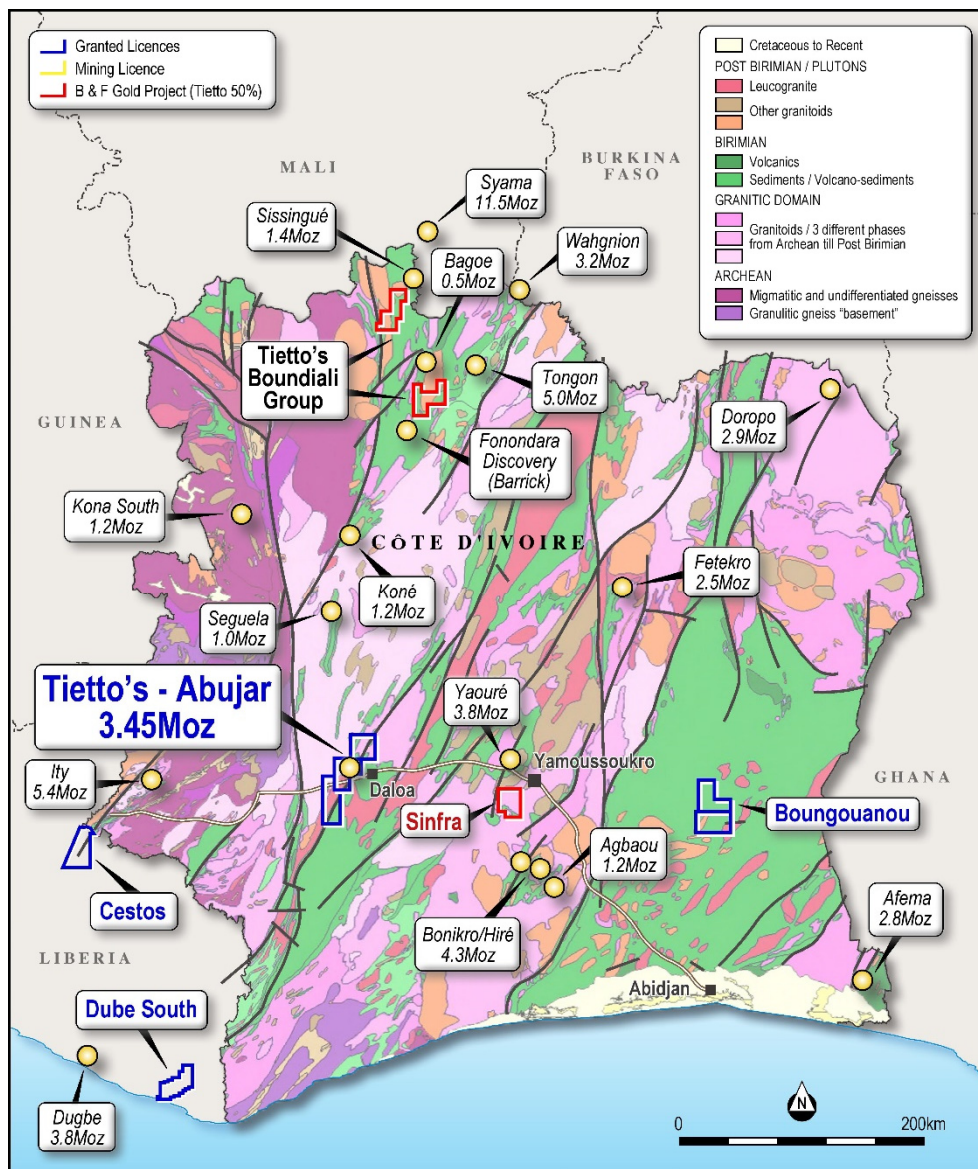


Figure 8: Location of the Abujar Project showing Exploration permits and Mining Licence

Regionally, the Project is connected to the political capital of Yamoussoukro by tarred road and to major regional towns by tarred and good quality gravel roads. The major regional city

near Abujar, Daloa, has an airport; however, it is not serviced by commercial airlines. International flights are available at Abidjan, which is 400km from Abujar.

Mining History

Artisanal surface mining has occurred within several areas of the Project, typically to a depth of 8m to 15m within the currently defined resource areas. Mining has targeted the higher grade, near-surface gold mineralisation. These activities occur in numerous places through the Project and vary significantly from minor surface disturbances to small-scale handheld pit and underground workings within the oxide material above the water table. These mining activities are not considered material to the currently defined gold resources, nor are they restricted to the reported resource areas which highlights the untested mineralisation potential within the region.

Mineral Rights and Land Tenure

Tietto holds interests in a series of exploration licences and the combination of the Zoukougbeu, Zahibo and Issia licences are named the Abujar Project. These enable the current exploration activities and associated surface disturbances. Below is a summary of the key permit which hosts the mineral resources.

Zoukougbeu licence

- Tietto Minerals Limited (**TMA**) entered a Joint Venture Agreement for the Development of an Exploration Licence for Gold in Zoukougbeu in Côte d'Ivoire dated 29 April 2014 (the **TMA-B&F Agreement**) with B & F Minerals SARL, a company incorporated under the laws of Côte d'Ivoire (**B&F**) and its shareholders.
- B&F is the registered holder of an exploration licence in the region of Zoukougbeu in Côte d'Ivoire registered with the Mines Directorate under number 469 (the Zoukougbeu Licence) which was granted on 15 September 2014 with Decree No. 2014-520.
- Under the terms of the TMA-B&F Agreement, TMA may earn an interest in the share capital of B&F of up to 50% subject to meeting certain expenditure and payment obligations; and 75% in any exploitation company formed if an exploitation (mining) permit is granted over all or part of the area covered by the Licence.
- TMA's current registered interest in the share capital of B&F is 50%. TMA continues to incur expenditure in accordance with the existing agreement.
- TMA and B&F reached an agreement on 28 March 2017 to allow TMA to have 90% interest in the Abujar Middle Tenement by transferring the exploration licence to a

newly incorporate JV company called Tiebaya Gold Sarl, of which Tietto has 90% share capital, B&F has 10% share capital. Tiebaya was incorporated in late April 2017. The Côte D'Ivoire Mining Ministry officially transferred the Zoukougbeu licence to Tiebaya Gold Sarl on 28th February 2018.

The initial tenure of the three exploration licences is four years under the new Côte D'Ivoire mining regulations. Subject to satisfaction to the terms and conditions of the initial exploration licences, the exploration licences are entitled for renewal for second and third terms of three years respectively, followed by one exceptional renewal of two years.

Mining Licence

In July 2020, Tietto Minerals, through its 90%-owned subsidiary Tiebaya Gold Sarl, applied for a gold mineral mining licence within the Abujar Middle Tenement, part of the Abujar Project. The mining tenement application covers an area of 120.36km². The licence was granted in December 2020. On 22 January 2021, Tietto Minerals increased its interest in the Abujar Gold Project's Mining Licence to 88% with 10% for Côte D'Ivoire government and 2% for local partners.

2. Geology and Mineralisation

Geological Setting and Mineralisation¹³

The West African Craton formed by progressive accretion of younger orogenic belts onto a cratonic core of early Archean age. Locally, younger orogenic belts developed inside the existing cratons, but more commonly they were accreted along the margins. The West African Craton has been subdivided into the Archean Leo-Man Shield and Palaeoproterozoic Birimian rocks.

The Leo-Man Shield is comprised of an Archean core of extensive granitic gneiss/granitoid complexes containing narrow, elongate metamorphosed volcano-sedimentary and sedimentary greenstones belts. Metamorphic and granitic rocks of the Liberian Province (~3200-2500Ma) underlie the north-western two-thirds of Liberia whereas the south-eastern portion of the country belongs to the Eburnean Province (~2100-1700Ma). These units are primarily re-activated Archean basement rocks with some local Proterozoic lithologies. The Eburnean orogenic cycle (2100-1700Ma) re-metamorphosed Archean cratonic rocks of the earlier Liberian metamorphic age province. In the central and eastern regions of the West African Craton these units have been broadly classified as mafic and ultramafic volcano-sedimentary rocks and iron formations, and are known to host many important precious metals, base metals and bulk mineral (principally iron ore) deposits in West Africa. The metamorphic grade of these greenstone belts ranges from lower greenschist to amphibolite facies.

The Birimian rocks comprise volcanic arc and sedimentary basinal successions that mantle the Leo-Man Shield to the north and east. These were deformed by the most active period of the Eburnean orogeny, which took place in three major tectono-metamorphic phases between 2150 and 2190Ma. After the Eburnean orogeny, most of West Africa formed a stable craton (around 1700Ma) and was bounded on the east and west by the Pan-African mobile zones. Birimian successions host most of the major gold deposits in West Africa.

The last major tectonic event in West Africa was the Pan-African Orogeny of Upper-Proterozoic to Lower Palaeozoic age (600-500Ma). This event also added new crustal material to the older cratons and re-metamorphosed older sequences of Archean to Late Proterozoic age. Pan-African mobile belts rim the western margins of West Africa and occur along Liberia's coastline. At the end of the Pan-African orogeny, the various cratons were joined together to form the approximate current shape of the continent of western Africa.

Geology of the Region

¹³ Independent Geologist's Reports, Coffey Mining September 2012 and RPMGlobal December 2016

Côte d'Ivoire lies in the southern portion of the West African Craton and the southern portion of the Leo-Man Shield. The country consists of four geological domains defined on geochronology; Archean, transition, Paleoproterozoic sedimentary basin and coastal sedimentary basin.

Archean Domain

The Project area is located to the central-western part of Côte d'Ivoire which is enclosed to the west of the major curved Sassandra Fault. This fault continues WNW, towards Guinea in the north. The lithology of the Archean area consists of grey gneiss and tonalite, trondhjemitic to charnokites; greenstone metamorphosed to granulite facies, banded quartzite, with magnetite and biotite migmatites. These formations are intruded by pink granites and basic-ultrabasic complex. This area was metamorphosed during orogenic cycles; Sierra Leone (3.5 to 2.9 Ga) and Liberia (2.9 - 2.6 Ga).

Modern dating on mono-zircon and monazite show that the oldest granulite formations are the tonalite gneisses in the northern part of the Archean area (north of the fault Danane-Man). These gneisses are dated to 3050 ± 10 Ma and intruded by charnokite formations that are dated at 2800 ± 8 Ma. The manifestation of the Eburnean orogeny in this area of Archean is dated to 2100 ± 40 Ma, and exhibits retrogressive reactions in basic rocks in formations of Mount Tia (Toulepleu-Itty) and in basic gneiss northern area.

Transition Area Archean-Proterozoic

The work of Kouamelan (1996) indicates the existence of a transition zone within the Paleoproterozoic area between the fault of Sassandra and longitude 6° W. This area is characterized by the contamination of Birimian juvenile training by Archean crust (Nd model age and intermediate inherited zircon). He determined the presence of inherited zircons whose isotopic ages Pb / Pb of respectively 3132 ± 9 Ma and 3141 ± 2 Ma. These ages prove the existence of Archean segments within a transition zone. This area is characterised in particular by the existence of Archean relics within the Paleoproterozoic domain.

Paleoproterozoic Domain

The Proterozoic Domain is separated from Paleoproterozoic-Archean area by the Sassandra Fault. The characteristic lithology consists of volcano-sedimentary belts which are generally oriented 020 to 050 and sandwiched between granitoid batholiths. The age of this domain is attributed to Birimian with the formations consisting predominately of tholeiitic and calc-alkaline rocks.

The structure of this area is interpreted to be the result of two major Paleoproterozoic strains: the first was the result of tangential tectonics on structures oriented NS to NNE; the second

corresponds to a transcurrent deformation, which is marked by the establishment of large sets of granitoids, around 2.1 Ga. Studies from geochronology show that the Birimian rocks were formed (quickly) between 2.25 and 2.05 Ga. This area is covered in the south by the coastal sedimentary basins up to the present Cretaceous basin.

Coastal Sedimentary Basin

The Ivory Coast Sedimentary Basin extends along the Atlantic coast. Its history is linked to the rifting of Gondwana and opening of the South Atlantic in the Lower Cretaceous. This opening led to the separation of Africa and South America.

It is an "open" type of basin; part of a string of sedimentary basins along the Atlantic coast from southern Morocco to South Africa. The Ivory Coast crescent is 400 km long and 40 km wide. It represents only 2.5% of Ivory Coast's surface. The formations of the Ivory Coast sedimentary basin are of Cretaceous-Quaternary age.

The history of the basin is summarised by three episodes of transgressions:

- The Albo- Aptien is characterised by deposits of clay and sandstone;
- Lower Maastrichtian-Eocene is marked by glauconitic clays, clays and sands; and
- Lower Miocene is composed of marl, of variegated clays and lignite.

Tectonic Development of the Birimian

The Birimian litho-stratigraphic succession is separated into two large groups:

- A Lower Birimian (B1) is essentially flyschoid basin fill. The whole basin is affected by three cycles of deformation:
 - ✓ D1 (2090-2100Ma) phase of major collision: duplication of the lower Proterozoic on the gneissic Archaean basement, a break in all B1 sedimentation and intrusion of syn- kinematic granites;
 - ✓ D2 and D3 (2090-1970Ma) responsible for the intrusion of granites mantle between;
 - ✓ 2080 and 1945my (D2 large sinistral offsets, related overlaps and folding; D3 dextral offsets and associated folds); and
- The upper Birimian (B2), volcanic-dominated, where fluvio-deltaic formations are intercalated in volcano-sedimentary facies.

Metallogenesis of the Birimian

The Eburnean metallogenic cycle, which is rich in gold and base metals lasted 150Ma with:

- A first period at the time of the filling of the B1; stratiform deposits of Mn, Fe, Au, Zn-Ag were put in place at about 2150Ma at the top of the stratigraphic pile. This period ends with the deposition of gold mineralisation in conglomerates; and
- The second, late-orogenic metallogenic period appears with the latter brittle deformation phases of D1 and D2. It is marked by mesothermal mineralisation, followed by quartz veins and paragenetic Pb-Zn-Ag-Bi deposits dated at approximately 201Ma.

The deposits encountered in West Africa in the Birimian are diverse. Examples of deposit types are:

- Gold mineralisation associated with major shear zones for example, Obuasi (AngloGold Ashanti/Randgold Resources) along Ashanti Fault Zone in Ghana.
- Gold mineralisation associated with conglomerates at the base of paleo-channels (placers) as in the deposit at Tarkwa in Ghana (Iamgold).
- Volcanic Massive Sulphides in the lower Birimian for example the zinc deposit at Perkoa in Burkina Faso (Blackthorn Resources and Glencore International, project in development).
- Sedex deposits of the Nsuta Manganese Mine in Ghana operated by the Ghana Manganese Company Limited since 1916. Mineralisation is associated with turbidites within a volcano-clastic terrane.
- Gold skarn at Ity. Ity is the only known Au skarn in the Birimian however iron skarns are known in the Kéniéba-Kedougou Inlier of the Faleme District in Mali and Senegal.

Project Geology

Abujar

The Project is located within the Proterozoic Birimian rocks of the Leo-Man Shield, as situated on the Daloa 1:200,000 geologic sheet, 30km west of Daloa. It is in the Hana-Lobo belt, east of the Sassandra Fault that marks the boundary between the Leo-Man Shield (Archean) and Eburnean domains.

Lithologies

Within the Project area outcrops are very uncommon. Lateritic cover mainly consists of hardpans and duricrust occurrences. Owing to vegetation cover, weathering and laterite development, the 1:200,000 geological map lacks detail however; general features of the local geology can be interpreted from the recently completed airborne geophysics magnetic survey.

The Abujar Deposit is located within a NNE-SSW orientated body of granitoid migmatite and is hosted within in an interpreted regional shear structure. This is then enclosed within two mica granite bodies of similar interpreted orientation which are regionally referred to as granodiorites. Greenstones are rare in the immediate vicinity but have been mapped as isolated bodies to the south and east.

Due to the lack of outcrop and limited drilling, the regional lithologies are relatively poorly understood, however they can be separated into either Proterozoic or post Proterozoic. The lithologies of Proterozoic age which are present inside the Project include:

- Migmatitic granitoids (Eburnean) associated with syntectonic granites; they can belong to either the metamorphic or the magmatic domain depending on the intensity of melting. They occur in the central portion of the property;
- Metamorphosed rhyolite (Eburnean) of pyroclastic origin. They occur as relics within two mica granites and consist mainly of quartz phenocrysts inside glass. They are found as light coloured banks showing mainly muscovite corresponding most probably to pyroclastic rhyolitic flows;
- Schists are divided into two groups:
 - ✓ Argillic schist: are always weathered with mottled texture and crosscut by quartz veins; and
 - ✓ Two-mica (+ staurolite and andalusite) schist: - consist of biotite and muscovite with minor andalusite, which is a common mineral of contact metamorphism.

This rock occurs at the contact with two-mica granite bodies in the central area of the property.

Only artisanal pits and diamond drill holes exhibit the different lithologies associated with the Proterozoic aged rocks which typically host mineralisation and are outlined below:

- Granodiorite is post Eburnean in age and consist of calc-alkaline intrusions. They are generally coarse to medium grained in texture depending on the intensity of deformation. Mineral compositions consist of quartz, biotite, amphibole, plagioclase, chlorite, epidote/calcite and pyrite. Visible gold can be present. The granodiorite has undergone a regional metamorphism of greenschist facies, with a paragenesis assemblage made of chlorite-quartz-biotite-epidote.
- The Schist group (or highly deformed granodiorite) consists of rocks with schistose texture of indeterminate origin. Minerals are fine-grain, mainly biotite, chlorite, quartz and pyrite. The biotite-chlorite-quartz assemblage shows that the rock belongs to the greenschist facies, being marked by regional metamorphism.
- Later Intrusions crosscut the granodiorite and schists. These later intrusions consist of either diorite or pegmatites. Diorite is massive and fine grained. The minerals don't show any general orientation and are typically green biotite, quartz and plagioclase. The pegmatite has thicknesses ranging from centimetres to metres. They are high temperature rocks in terms of the paragenetic assemblage. Main minerals are K-feldspar, biotite, muscovite, quartz and garnet.

Deformation and Mineralisation

Two styles of deformation are interpreted to be present within the drill cores at Abujar; these include ductile deformation and brittle deformation. The gold mineralisation is interpreted to be related to the deformed granodiorite, in shear zones, with sulphides (mainly pyrite and minor chalcopyrite) associated with visible gold. The mineralisation seems to be located within the granodiorite at the boundary between two different intensities of deformation i.e. weakly deformed and highly strained.

Alteration is characterised by chlorite, sericite, calcite, secondary quartz and disseminated pyrite. This assemblage is well developed in schistose, foliated rocks with the presence of quartz veins or veinlets.

Mineralisation Style and Geometry

Deposits within the Abujar Project resemble typical shear zone deposits of the West African granite-greenstone terrane. The Abujar deposit is associated with a major regional shear zone and is developed in granodiorite hosts similar to that which hosts the Pischon & Golikro

deposits and the interpreted extension areas in the Gamina deposits to the north (Gamina South and Centre). Mineralisation is potentially spatially related to the emplacement of intrusives and interpreted to be mesothermal in origin. Free gold in quartz vein stockworks and zones of silicification, associated with pyrite and chalcopyrite.

The gold mineralisation is typically found in linear domains with the contacts showing evidence of shearing with free gold frequently observed. Alteration is weak to severe depending on the development of the system. As noted, gold mineralisation is hosted within a continuous shear zone which is traced over 4.5km within Abujar, 1.5km within Pischon and 2.5km within Golikro, however analysis of the drill holes within these deposit indicates that within this low grade shear hosted halo, higher grade lodes occur which are slightly oblique to the strike of the shear. This is interpreted to be typical riedel ductile shear mineralisation, which is structurally controlled both at a local and regional scale.

Several occurrences of boudin structures are observed within the drill core, and it is hypothesized these structures control mineralisation both regionally and locally. Of particular note is the intersection of near vertical extremely high-grade plunging shoots (>5g/t) which can be interpreted within both the Abujar and Pischon Deposit. These can be seen in the long sections of the grade estimates.

All lodes have similar southeast-dipping orientations striking 030° and dipping at varying angles of inclination typically between 50 and 75°. These lodes appear to coincide with strong linear geological structures which are offset by several faults and have strike length from 200 metre to up to 1.2km. The lodes range in thickness from 2m to up to 15m, with the thicker zones general occurring where the higher grades occur, which is as expected for the structurally controlled style of mineralisation.

Exploration Works

Tietto's exploration has focused on the Zoukougbeu Licence, which has included geochemical sampling, surface pits and trenches as well as surface diamond, RC and AC drilling since 2015. Recent work has focused on surface drilling over the AG and APG deposits located in the north-eastern part of the Zoukougbeu permit.

Drilling

Drilling to date has targeted areas directly beneath artisanal workings and anomalous areas identified during the geochemical sampling programs. Tietto has used both Reverse Circulation (**RC**) and Surface Diamond Drilling (**DD**) for the Project to date in seven phases during 2015 - 2017, 2018, 2019 – 2020 and 2020 - 2021.

All drilling during 2015 and 2017 was via surface RC. In 2016, most holes were RC but some holes had RC pre-collars with DD-tails at depth, with most mineralised intersections within the DD drilling. Drilling in 2019-2020 was predominately DD.

The diamond rigs used a conventional wire-line diamond drilling technique to produce HQ- or NQ-size diamond core. HQ-size rods and casing were used at the top of the holes to stabilise the collars, however the majority were drilled with NQ-NTW-size equipment to the end of the hole. On rare occasion BQ drilling was used at depth. In July 2018 Tietto started utilising its own man portable DD rig and now has six rigs working 24/7.

Drilling to date has targeted seven areas within the Project, these include: Abujar-Gludehi (AG), Pischon (APG) and South Gamina (SG) deposits within the Zoukougbeu licence and the Gamina set of deposits within the Zahibo Licence.

Drilling at the deposits now extends to a vertical depth of approximately 700m within AG and 200m at APG and SG.

Drill hole collars were generally spaced on an approximate 100m by 50m grid in all deposits with recent drilling including infill drilling on 50m by 50m spacing within AG with some closer spacing in the central core of AG.

Mineral Resource Data Verification

RPM Advisory Services Pty. Ltd (“RPM”) conducted a review of the geological and digital data supplied by Tietto to ensure that no material issues could be identified and that there was no cause to consider the data inaccurate and not representative of the underlying samples.

RPM personnel visited the Abujar Project in July 2016, August 2017, July 2018 and October 2019 and reviewed the outcrops, drill-hole locations and core sheds as well as holding various discussions with site personnel. RPM sighted mineralised drill-hole intersections for all the deposits, down hole surveys and assay data, laboratory facilities, and reviewed survey data acquisition protocols, assay procedures, bulk density determination, logging and sample preparation procedures and quality control (QC) results. RPM concluded that the data was adequately acquired and validated following industry best practices.

Exploration Data

Tietto used reverse circulation (RC) and surface diamond drilling (DD) for the Project to date. All drilling during 2015 at Abujar was RC with the 2016 drilling most completed with RC and some commencing with RC pre-collars and changing to DD at depth, subsequently all drilling during 2017 was RC. In 2018, drilling included DD, RC, and RC with DD tail and AC. Early 2019, DD and RC drilling was conducted and since late 2019 to present all drilling has been DD.

The diamond rigs used a conventional wire-line diamond drilling technique to produce HQ- or NQ-size diamond core. HQ-size rods and casing were used at the top of the holes to stabilise the collars, however the majority were drilled with NQ-NTW-size equipment to the end of the hole. In rare occasion BQ drilling was used at depth. In July 2018, Tietto started utilising its own man portable DD rig. Each drill run was 6m in length, or 1.5m in length for the man portable.

All RC samples were placed in plastic bags directly sourced from the rig mounted cyclone. The core was placed in approximately 1 m long wooden/metal/plastic core trays (each holding around 4 to 6m of drill core depending of the core diameter) after extraction from the core barrel. The 1m intervals were then marked and labelled for future reference.

Drilling Sample Recovery

Within the diamond drilling typical core recoveries ranged between 90% and 100% for all holes which RPM considers suitable with no notable outliers within the mineralised zones. Some low recovery are associated with intensely fractured or faulted intervals and the more intensely weathered upper zone however these low recoveries are not considered material to the total Mineral Resource currently estimated.

Drill Hole Collar Locations

All drill hole collar and trench locations were surveyed utilising the differential GPS methods by third party surveyors (Sahara Mining Services) and more recently Tietto's own licenced surveyor. The DGPS system utilised is typically within 10cm accuracy range which is suitable for the classification applied.

Down Hole Survey

Contract drilling teams utilised the Reflex EZ-shot instrument to measure deviations in azimuth and inclination angles for all RC and RCD holes; however, vertical holes were not surveyed. The first measurement is taken at 12 m depth, and then approximately every 30m depth and again at the end of the hole. Tietto has utilised its own survey tool with its man portable DD rig. RPM considers the drilling and the drilling information provided for the reported resources to be of high standard when compared to mining industry practices. RPM agrees with the surveys procedures, their controls and, as a result, all drilling for the Abujar Project can be used as a base for the Mineral Resource estimate.

Drill Hole Logging

The Company has developed logging and sampling procedures based on the experience of the local technical team. These were subsequently reviewed by RPM during the site visit and it is their opinion that the processes and protocols implemented will provide results with a

high level of confidence. Tietto company geologists log the core and RC samples according to the existing lithological, alteration and mineralogical nomenclature of the deposit as well as sulphide content. Photography and recovery measurements were carried out by assistants under a geologist's supervision.

Logging records were mostly registered in physical format and were inputted into a digital format (excel). However, as the project develops RPM would recommend capturing the geological logs in digital format, to avoid any potential for input errors. The core photographs, collar coordinates and down hole surveys were received in digital format.

Sample Methodology

Diamond core was logged both for geological and mineralised structures as noted above. The core was then cut in half using a diamond brick cutting saw on 1m intervals. Typically the core was sampled to geological intervals as defined by the geologist within two metre sample intervals. The right hand side of the core was always submitted for analysis with the left side being stored in trays on site, as confirmed by RPM during the site visit.

RC samples were collected as 1m samples directly from the cyclone which were split using a riffle splitter with $\frac{1}{4}$ of the same retained in the plastic bags, the remainder was re-split with $\frac{1}{4}$ retained in calico bag and the remainder placed in large green plastic bags. These samples were spear sampled to form 2 m samples which were subsequently sent to the laboratory.

Sample Preparation and Assaying

All resource sample preparation and assay has been completed by independent international accredited laboratories. Prior to September 2018 ALS Minerals undertook the work and since then the work has been undertaken by Intertek. Subsequent to cutting or splitting, the samples were bagged by Tietto's employees and then sent to ALS Minerals laboratory in Yamoussoukro for preparation. These samples were subsequently sent to Ghana for analysis by fire assay. Since September 2018, samples have been analysed by Intertek. Samples were picked up from site and then send to Ghana for preparation and analysis. Both labs used the exact same preparation and analytical method path.

Tietto employees insert quality control (QAQC) samples on site prior to delivering the samples to ALS Minerals in Yamoussoukro / to Intertek picking up the samples from site. Tietto employees have no further involvement in the preparation or analysis of the samples.

All samples followed a standard path as outlined below:

- Samples as received are initially sorted and verified against the client Sample Submission Form.

- Samples are air dried at 90°C.
- All samples are crushed to 2mm using a jaw crusher and Boyd crusher in a two-stage process.
- Sample split by rotary sample divider to 600-700 g, with reject retained.
- Whole sample is pulverised to 90% <75 µm.
- The pulverised sample is mixed and divided manually, with approximately 200g retained for the client and 300g retained for laboratory analysis.
- Gold by fire assay with atomic adsorption finish 30g.

Quality Assurance and Quality Control

A definitive QAQC program has been implemented to provide verification of the sample procedure, the sample preparation and the analytical precision and accuracy of the primary laboratory, which includes the following:

- Standard Reference Material (SRM) samples: Two types of standards sourced from Geostats Ltd. were inserted 1 in every 20 samples.
- Primary RC duplicates: Generated from the first splitter off the rig and inserted 5% (1 in 20 samples). This sample is collected from a spear sample from the reject material of the primary split.
- Primary DD duplicate: Generated by cutting the remaining half core into a ¼ and sampled.
- Coarse blank samples: Inserted 1 in every 20 samples.
- Laboratory Internal Duplicates and Standards.

Sample Security

Measures undertaken to ensure sample security included the following:

- Samples for the Mineral Resource estimates have been derived from surface drilling. The drilling crews are responsible for delivering the samples and core to the storage facilities, the Company's personnel are responsible for cutting the core and placing the cut core in bags for delivery to the preparation laboratory facilities which is also managed by the Company's Geology Department. Together with the cores and RC samples, the geology staff provide the laboratory with a report detailing the amount and numbers of samples and sample tickets to each core is provided. Prior to

submission, duplicate and SRM's were included in the batches and documented within the sample runs. Batches are sent to the analytical laboratories with a report detailing the analysis method required for each element. Chain of custody is kept all the time by the Company personnel.

- Following submission, samples are managed and prepared by independent international accredited laboratory personnel.
- All personnel handling samples are supervised by senior site geologists and geotechnicians. In addition, photos are taken of all core trays prior to sampling. Core is clearly labelled for sampling, a suitable paper trail of sampling can be produced and duplicate samples are taken to ensure no sample handling issues arise. Half core rejects, core rejects and pulps are appropriately stored inside the core shed and are available for further checks.

3. Mineral Resource

Mineral Resources have been independently reported by RPM in compliance with the recommended guidelines of the JORC Code (2012) and are dated 28th February 2022.

Mineral Resource Classification System under the JORC Code

A “Mineral Resource” is defined in the JORC Code as ‘a concentration or occurrence of solid material of economic interest in or on the Earth’s crust in such form, grade (or quality) that there are reasonable prospects for eventual economic extraction. The location, quantity, grade (or quality), continuity and other geological characteristics of a Mineral Resource are known, estimated or interpreted from specific geological evidence and knowledge, including sampling. Mineral Resources are sub-divided, in order of increasing geological confidence, into Inferred, Indicated and Measured categories.

Mineral Resource estimates are not precise calculations, being dependent on the interpretation of limited information on the location, shape and continuity of the occurrence and on the available sampling results.

For a Mineral Resource to be reported, it must be considered by the Competent Person to meet the following criteria under the recommended guidelines of the JORC Code:

- There are reasonable prospects for eventual economic extraction.
- Data collection methodology and record keeping for geology, assay, bulk density and other sampling information is relevant to the style of mineralisation and quality checks have been carried out to ensure confidence in the data.
- Geological interpretation of the resource and its continuity has been well defined.
- Estimation methodology that is appropriate to the deposit and reflects internal grade variability, sample spacing and selective mining units.
- Classification of the Mineral Resource has taken into account varying confidence levels and assessment and whether appropriate account has been taken for all relevant factors i.e. relative confidence in tonnage/grade, computations, confidence in continuity of geology and grade, quantity and distribution of the data and the results reflect the view of the Competent Person.

Area of the Resource Estimation

The deposits, which form part of the Mineral Resource estimates, are located approximately 27km west of Daloa in Cote d’Ivoire all within the Abujar Project. The Project consists of three exploration rights under the Ivory Coast mining code currently held by the Companies of

which Tietto have Joint Venture agreements or partial owners through subsidiaries. RPM notes that the reported Mineral Resources include the following areas (Figure 9):

- AG Deposit – Located within the northern portion of the Zoukougbeu licence this deposit consists of multiple vein structures defined up to 700m in depth with a strike length of 5.5 km.
- APG Deposit – Located to the south of the AG Deposit within the central portion of the Zoukougbeu licence this deposit consists of multiple vein structures defined up to 200m in depth with a strike length of 5.5 km.
- South Gamina – Located to the north of the AG Deposit within the northern portion of the Zoukougbeu licence this deposit consists of multiple vein structures defined up to 150m in depth with a strike length of 1.5 km (No change).

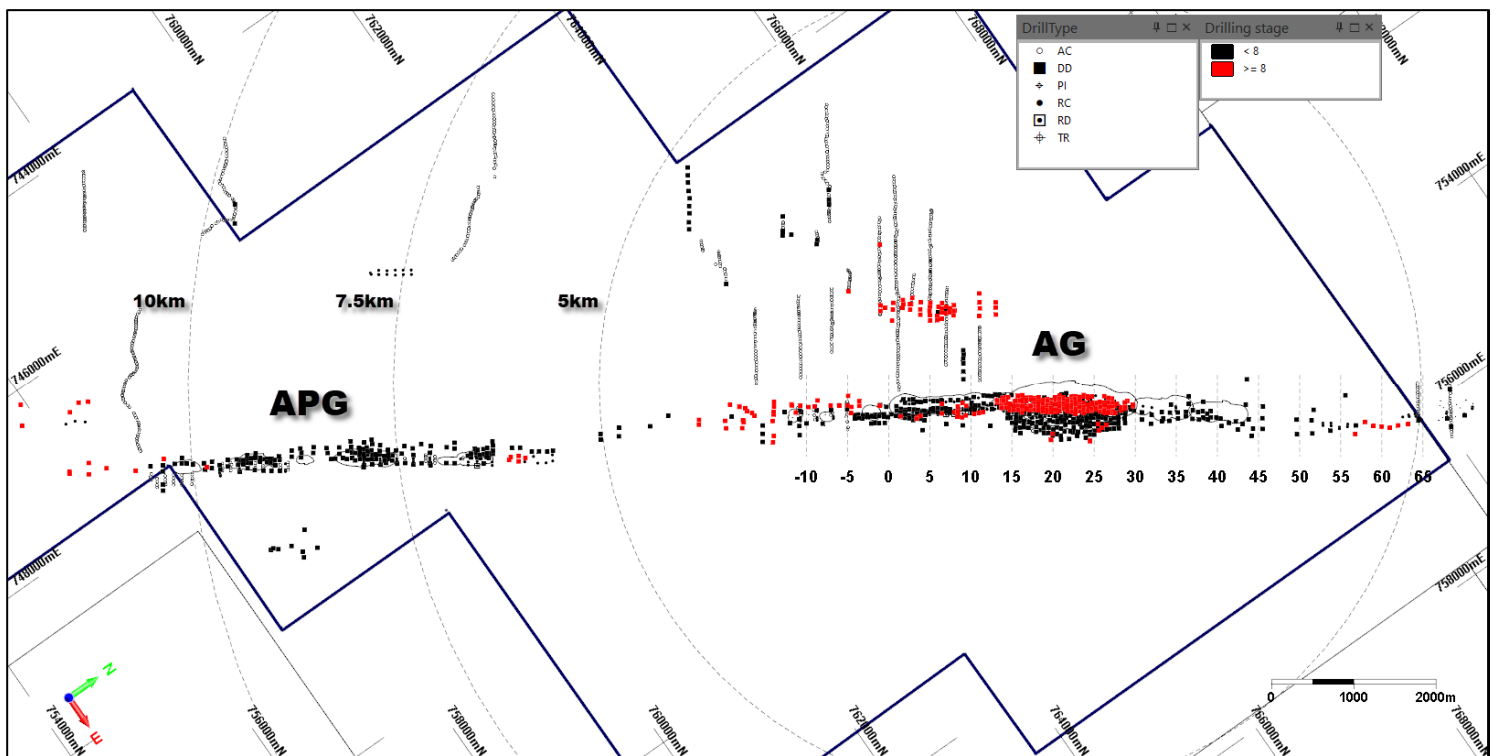


Figure 9: Area of the Abujar Resource Estimate

Estimation Parameters and Methodology

Sample Data

A comprehensive dataset was provided to RPM which were utilised within the estimate and resultant classification of the resources. The dataset included RC, RD, AC, DD holes and surface trenches. All drill hole and channel sample collar, survey, assay and geology records were supplied to RPM in digital format by the site geologists. All Mineral Resource estimation work reported by RPM was based on data received as at 28 February 2022 (Table 5).

Table 5: Summary of Drill Hole Data Supplied to RPM

Deposit	No holes	Type	Metres
AG	22	2015RC	2,063
	2	2016DD	477
	39	2016RC	6,833
	12	2016RD	2,800
	6	2017TRENCH	110
	43	2018AC	1,497
	56	2018RC	9,287
	6	2018RD	1,610
	97	2019DD	26,572
	7	2019RC	1,299
	159	2020DD	44,102
	324	2021DD	67,246
111	2022DD	20,754	
APG	7	2016RC	800
	70	2018AC	3,025
	17	2018DD	2,746
	30	2018RC	1,824
	1	2018RD	180
	18	2019DD	4,180
	69	2020DD	15,852
	65	2021DD	9,099
9	2022DD	1,924	
SG	15	2017RC	1,926
	2	2020DD	536
	6	2021DD	1,130
	7	2022DD	1,647
Other	13	2016RC	1,520
	24	2016TRENCH	1,500
	34	2017RC	4,506
	37	2018AC	1,430
	3	2018RC	395
	12	2019DD	1,710
	581	2019PITTING	2,983
	492	2020AC	22,557
26	2020DD	6,554	

Deposit	No holes	Type	Metres
	241	2021AC	11,063
	55	2021DD	10,867
	3	2022DD	789
Total	2,721		295,390

Bulk Density Data

Bulk density determinations were carried out on the diamond core from holes within the Abujar Project:

- No relation can be interpreted between grade and density, this is as expected for the style of mineralisation;
- Rock types of granodiorite (Fgd) and Mafics (Msc) appear to have relationship with density, as would be expected; and
- Experimental density values were assigned for oxidised and transition areas with 2.0 g/cu.cm and 2.4 g/cu.cm respectively applied, and an average density value 2.82 g/cu.cm from provided density data used for fresh rock.

Depletion Areas

Small scale mining has been undertaken on several areas within the project. This mining is restricted typically to the upper 10m of the oxide material, however, is variable in depth and extent. A detailed topographic survey was used to deplete known mining areas.

Geological Interpretation

Geological units and shear hosted veins for the deposits, defined by lithological logging and sample assays consisted of generally discrete, mineralised lenses. These were interpreted and wireframed as solids for each area.

RPM constructed one set of mineralised wireframes for each deposit using a cut-off grade of 0.25 g/t Au based on interrogation of log histograms and probability plots of the raw assay data. Geological interpretations of the lithological units, the geological structure, alteration and the different lodes of mineralisation were used to guide and interpret the shape of the mineralised wireframes.

All deposits have similar styles of mineralisation which was interpreted as being comprised of northeast- striking lodes with striking degrees of approximately 35°. Lode dipping at varying angles of inclination are typically between 60 and 75° for AG, SG and APG while AG and SG

dip to southeast and APG dip to northwest. These lodes appear to coincide with strong linear geological structures which are offset by several offsetting faults.

RPM defined 130 discrete bodies for the AG Deposit, 94 discrete bodies for APG Deposit and 9 discrete bodies for SG Deposit based on the orientation and shape of the mineralisation, which were further domained in the north, middle and southern areas

Oxidation logging data was used to create a base of oxidation surface and the top of fresh rock to further constrain the mineralised domains and allow separation of material types into oxide, transition and fresh.

Drill hole collars were generally spaced on an approximate 50-100 m by 50-100 m grid in all deposits however closer spacing occurs within AG core area with spacing of 25-50m by 25-50m.

Preparation of Wireframes

Wireframed solids were constructed based on sectional interpretations of drill hole geological and sample data using SURPAC version 2021 geological software. The sectional resource outlines were generally extrapolated to a distance half-way between mineralised and un-mineralised holes/sections with a maximum distance of 30m was generally applied; however, in areas of >100m at depth with no infill drilling the distance was increased if depth consistency was observed between the sections. RPM notes that only the main lodes were extrapolated to 50m, with all these areas classified as inferred. Additionally, due to the limited drilling near surface if mineralisation was observed in the alluvial pits, the lodes were extrapolated to surface.

The interpreted outlines were manually triangulated to form the wireframes. To form the ends of the wireframes, the end section strings were copied to a position mid-way to the next section (to a maximum of 50 m) and adjusted to match the overall interpretation and trend of the mineralisation. The wireframed objects were validated using SURPAC software and set as solids.

The resultant mineralised wireframes were used as hard boundaries to constrain the grade interpolation within the deposit. RPM was informed by the Client that all un-sampled intervals were assumed to have no mineralisation and they were therefore set to zero grade, however these were minimal.

Sample and Generational Support

RPM completed a sample support analysis of the two sample types, RC and DD. As these are different sampling methods and importantly have different sampling volumes, there is the

potential to introduce inherent sample bias. A statistical review of the assay results from the two sampling methods indicates that there is no potential bias when comparing close pairs of each dataset, as such no changes to the data was required.

Composites

The sets of mineralised wireframes (“objects”) were used to code the assay database to allow identification of the resource intersections. A review of the sample lengths was subsequently completed to determine the optimal composite length. The most prevalent sample length inside the mineralised wireframes was 1m being the larger component, and as a result, 1m was chosen as the composite length. The samples inside the mineralised wireframes were composited to 1m lengths and SURPAC software was used to extract the composites. Separate composite files were generated for each resource object. The composites were checked visually in SURPAC software for spatial correlation with the wireframed mineralised objects.

Statistical Analysis

The composites were imported into statistical software to analyse the statistics of the assays within the mineralised wireframes. The summary statistics for major lodes are shown in **Table 6**. Log histograms and log probability plots for the drilling composites within AG, APG and SG are shown in **Figure 6**.

The composite samples show a moderate positively skewed log-normal distribution which is typical for the style of mineralisation observed within the deposits. RPM notes that it is apparent that multiple distributions occur within the populations at the AG and APG deposit.

Table 6: Basic Statistics and Major Lodes

Deposit	AG + SG					APG	
	All	32	40	43	51	All	4
Statistic							
Number	22,711	1,946	4,514	2,581	1,551	4,789	1,360
Minimum	0.01	0.01	0.01	0.01	0.01	0.01	0.01
Maximum	1911.76	174.72	249.75	137.64	164.82	26.51	23.09
Mean	1.36	1.23	1.17	1.43	1.09	0.58	0.61
Std Dev	17.33	7.08	7	5.64	5.32	1.26	1.29
Coeff Var	12.74	5.73	5.98	3.94	4.89	2.16	2.12
Variance	300.39	50.07	48.97	31.77	28.32	1.59	1.65
Skewness	78.56	16.61	21.58	12.06	21.59	9.99	9.24
Percentiles							
10%	0.04	0.04	0.05	0.03	0.04	0.09	0.09
20%	0.09	0.07	0.1	0.07	0.09	0.15	0.15
30%	0.14	0.11	0.15	0.12	0.14	0.21	0.21
40%	0.21	0.16	0.23	0.22	0.24	0.27	0.26
50%	0.31	0.26	0.31	0.33	0.34	0.32	0.32
60%	0.4	0.35	0.41	0.45	0.42	0.39	0.39
70%	0.55	0.49	0.55	0.66	0.58	0.49	0.51

Deposit	AG + SG					APG	
	All	32	40	43	51	All	4
Statistic							
80%	0.84	0.74	0.85	1.05	0.88	0.65	0.71
90%	1.63	1.62	1.68	2.37	1.75	1.08	1.17
95%	3.28	3.07	3.17	5.19	3.19	1.72	1.74
97.50%	6.36	6.07	5.95	9.37	6.37	2.76	3.15
99%	16.13	18.95	14.28	23.74	16.02	4.66	4.45

High-Grade Cuts

The statistical analysis of the composited samples for Au inside the mineralised wireframes was used to determine the high-grade cuts that were applied to the grades in the mineralised objects before they were used for grade interpolation. All assays above the cut value were assigned the cut value. This was done to eliminate any high-grade outliers in the assay populations which would result in conditional bias within the resource estimate. The high-grade cuts applied to the composites were determined from the log histograms and log probability plots for each deposit resulting in the following conclusions:

- Top-cuts values range from 60g/t to 125 g/t were used for 9 objects in the AG area respectively and top-cuts of 16g/t was appropriate for 1 object in the APG area. These high-grade cuts were applied to the composites and were determined from the log histograms and log probability plots. RPM notes there were some extreme high-grade samples identified during the latest exploration stage however the high-grade domains were not extended.
- A grade dependent search was applied to all samples above 35 g/t. This was limited to a 25m – 30m radius influence of 12 samples due to the extreme grades of these holes.

Figure 10: Example top-cut analysis for AG pod 40

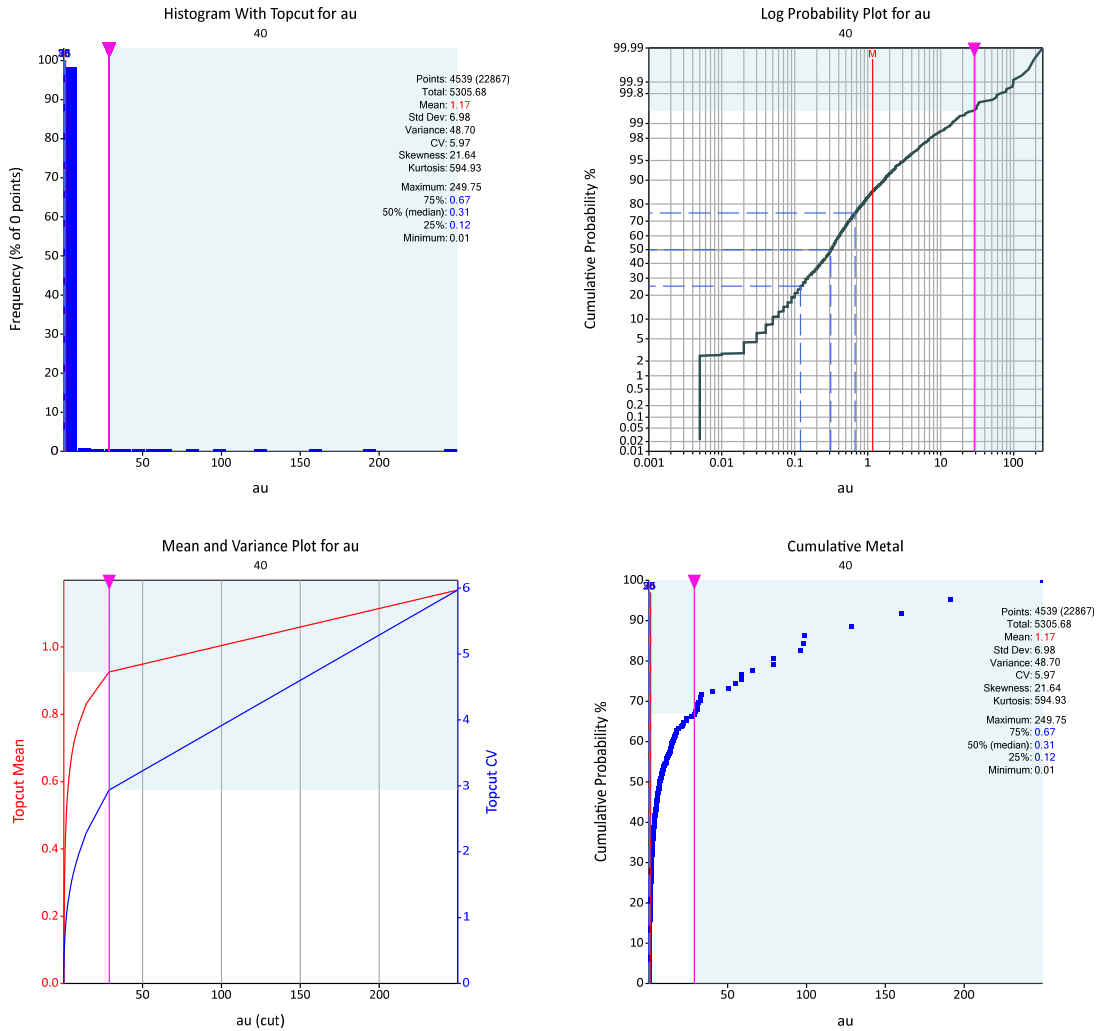
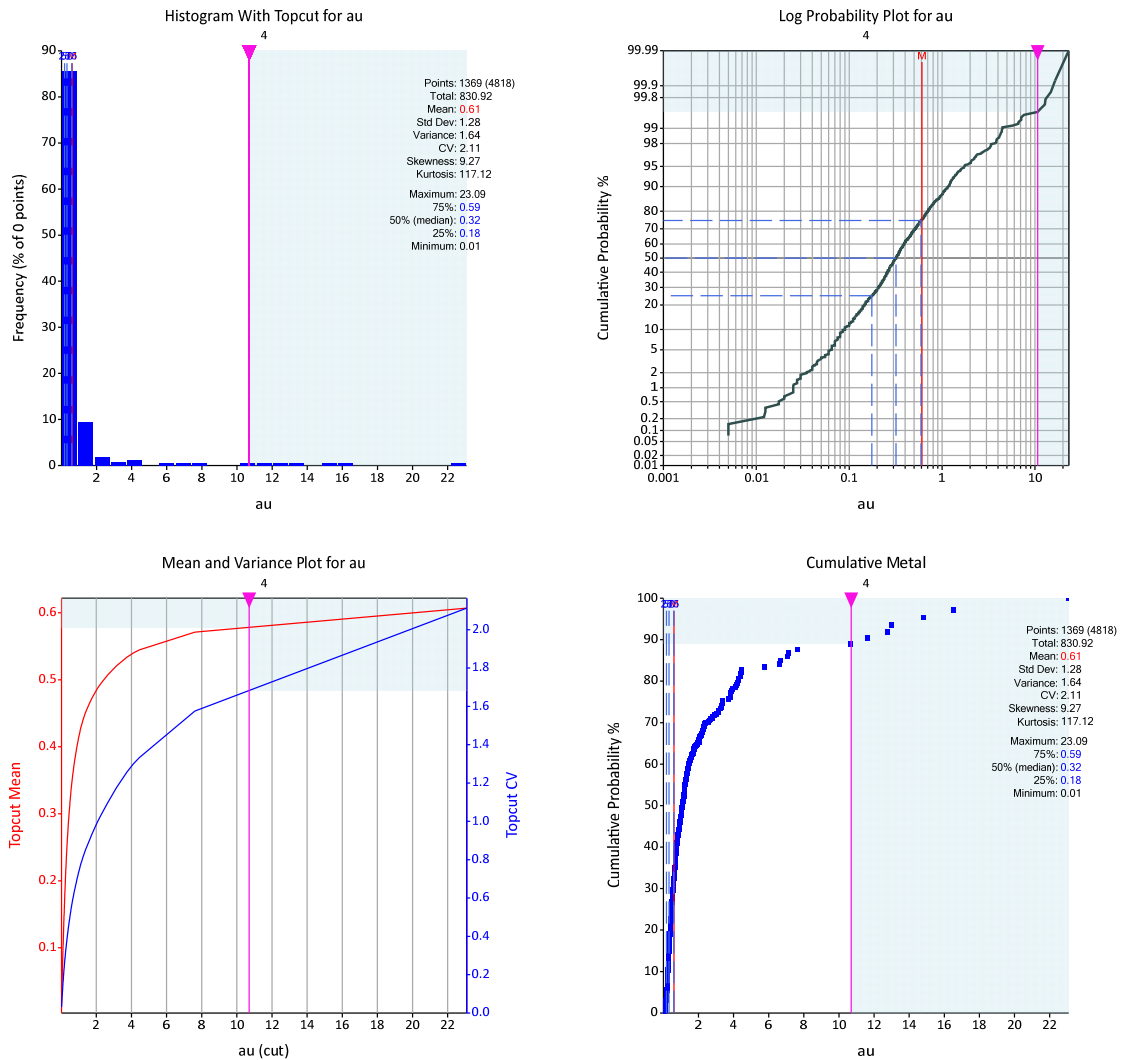


Figure 11: Example top-cut analysis for APG pod 4



Geospatial Analysis

RPM completed normal scores variogram analysis for the modelled areas at AG. These analyses indicated that within the continuous along strike shear (035°) which dips consistently at 60° - 80° to the southeast, southerly plunging shoots can be interpreted (Figure 12). This orientation is consistent with the high-grade plunges which can be interpreted within the drill holes.

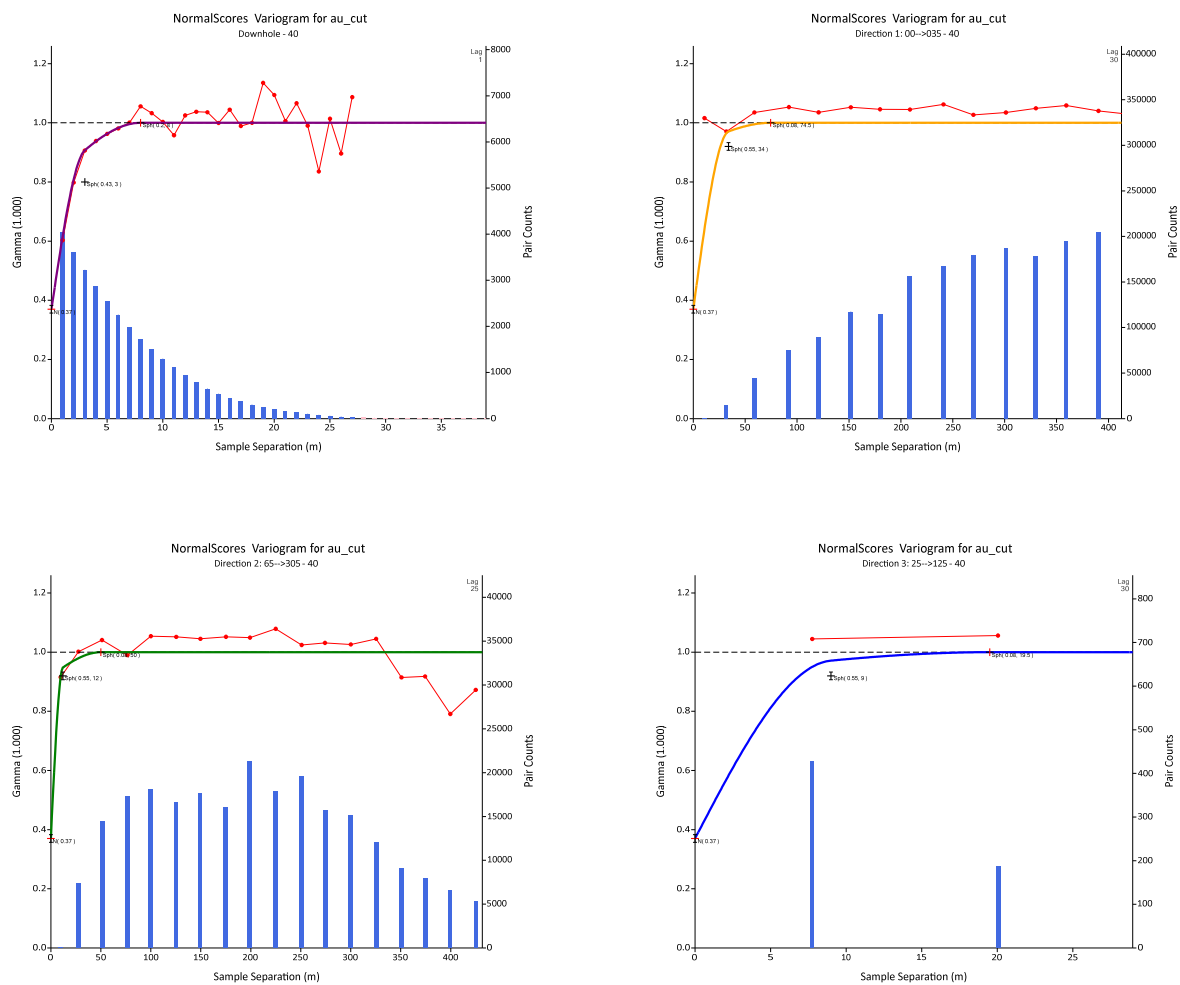


Figure 12: Example normal scores variograms and fitted model AG pod 40

RPM also undertook normal scores variogram analysis for the modelled areas at APG. These analyses indicated that within the continuous along strike shear (035°) gold mineralisation dips consistently at around 60° - 70° to the southwest (Figure 13). This orientation is consistent with the mineralisation intersected by drill holes.

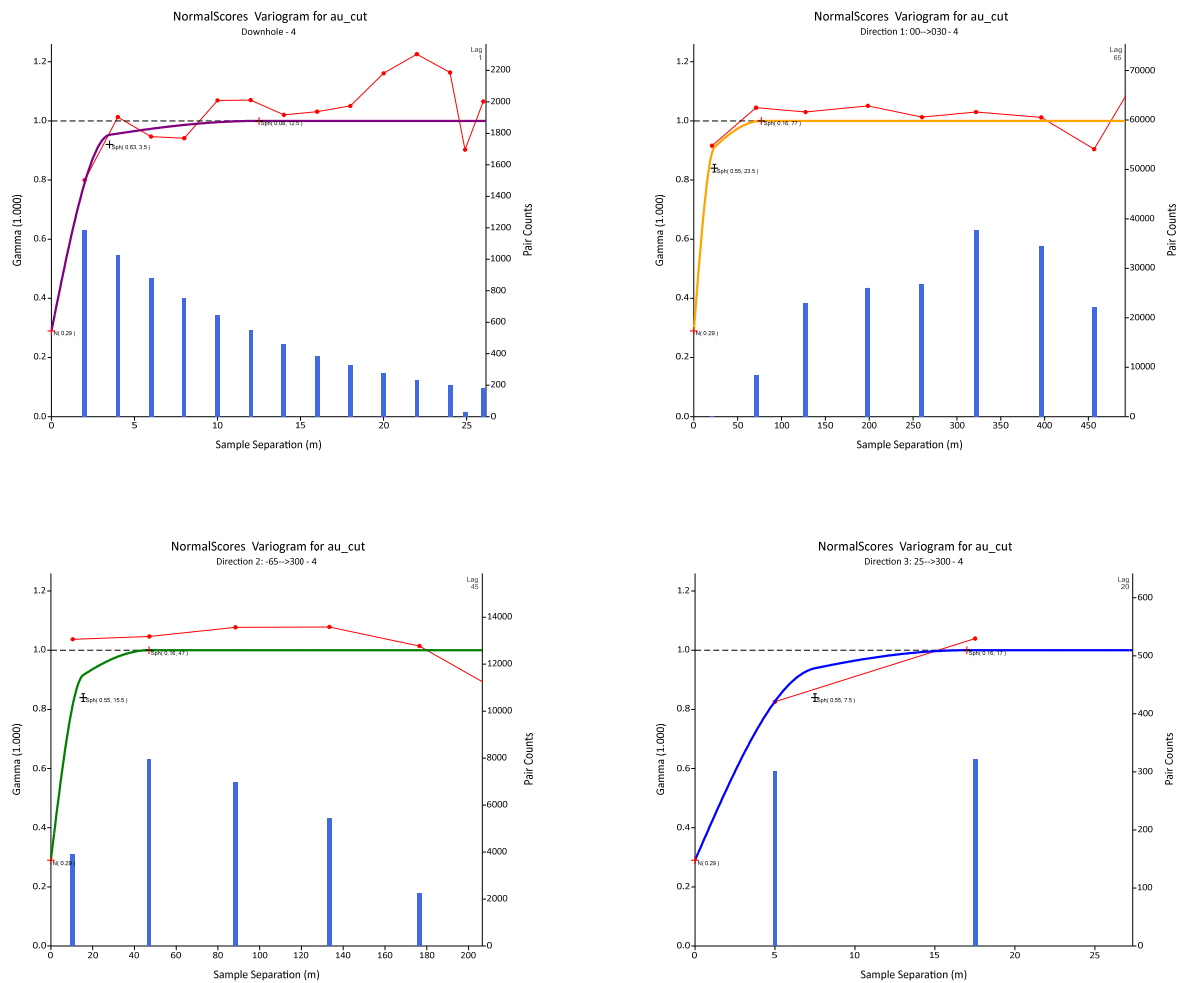


Figure 13: Example normal scores variograms and fitted model APG pod 4

Mineral Resource estimation

Block Model

SURPAC block models were created to encompass the full extent of each resource area as currently defined within the licence boundary for the AG and APG deposits. The block model was rotated to a bearing of 035 degrees to align with the general strike of the majority of the mineralised lenses, to improve the fit of the blocks to the wireframe and to reduce the size of the block model. The block dimensions used in the AG model were 10m NS (along strike) by 10m EW (across strike) by 5m vertical with sub-cells of 3.125m by 3.125m by 0.625m while APG and SG were 25m NS (along strike) by 10m EW (across strike) by 5m vertical with sub-cells of 3.125m by 3.125m by 0.625m based on the drill spacing. The block model origin, extent and attributes are shown in **Table 7**.

Table 7: Block Model parameters

Estimate Area	Origin			Extent			Rotation Degrees
	Easting	Northing	Elevation	Easting	Northing	Elevation	
AG	750,400	763,500	-500	1,600	8,800	700	35
APG	746,100	756,000	-175	1,400	8,100	480	35

Grade Interpolation and Estimation Parameters

Each mineralised wireframed object was used as a hard boundary for the interpolation of Au. That is, only composites inside each object were used to interpolate the blocks inside the same object. The Ordinary Kriging (**OK**) algorithm was selected for grade interpolation of Au. The OK algorithm was selected to minimise smoothing within the estimate and to give a more reliable weighting of clustered samples.

An isotropic search ellipsoid in the major and semi-major directions was used for the interpolation process based on the number of samples to be used to estimate a block and the relative orientations of the mineralisation, however an anisotropic parameter was used in the minor direction (across strike). The search ellipsoid orientations used for interpolation matched the general orientation of the mineralised lodes in each domain, with separate parameters used for the north, middle and south. Three passes were used for the estimation including a final pass with a large search ellipsoid and a minimum sample of one to ensure that all blocks were estimated within the block model, as shown in Table 8.

Table 8: AG Search Ellipsoid Parameters

Parameter	Estimation Pass 1	Estimation Pass 2	Estimation Pass 3	Estimation Pass 4
Search Type				
Bearing	35	35	35	35
Dip	-65	-65	-65	-65
Plunge	0	0	0	0
Major-Semi Major Ratio	1.2	1.2	1.2	1
Major-Minor Ratio	3	3	3	2
Search Radius	30	50	80	160
Minimum Samples	5	5	5	1
Maximum Samples	12	12	12	12
Max. Samples per Hole	4	4	4	4

Table 9: APG Search Ellipsoid Parameters

Parameter	Estimation Pass Pass 1	Estimation Pass Pass 2	Estimation Pass Pass 3
Search Type	Ellipsoid		
Bearing	35	35	35
Dip	65	65	65
Plunge	0	0	0
Major-Semi Major Ratio	1	1	1
Major-Minor Ratio	2	2	2
Search Radius	40	80	300
Minimum Samples	5	5	1
Maximum Samples	12	12	12
Max. Samples per Hole	4	4	4
Block Discretisation	5 X by 4 Y by 2 Z		

Model Validation

A rigorous process was used to validate the estimation for the Project as outlined below:

- Mathematical Comparison by Domain;
- Visual Inspection of the Blocks; and
- Overall Validation.

Visual Inspection of the Blocks

Following the mathematical comparison and the validation notes, a visual comparison of the block estimates to the composites was completed. The visual inspection indicates a good correlation exists at a local scale down dip and when closer spaced drilling occurred between the block estimate and the surrounding composites with the block estimate grade smoothed due to a combination of the block dimensions and the OK algorithm.

RPM notes due to the style of mineralisation there is a degree of smoothing within each lode, however RPM considers this level of smoothing suitable to interpretation on a global scale, however variation may occur on a local scale. As such RPM considers that further drilling and closer drilling spacing will be required should a higher level of classification be required.

Overall Validation

The review of the mathematical comparison indicates that a good overall correlation exists between the block estimates and the composite grades within both deposit and each lode. This good correlation of the drill holes and interpolated block model is further supported when a visual inspection is completed, however RPM does note that there is a degree of smoothing.

As a result of the validation completed, RPM considers the estimate is representative of the composites and is indicative of the known controls of mineralisation and the underlying data.

See JORC Table 1 for further details.

Mineral Resource Classification

Mineral Resources were classified in accordance with the Australasian Code for the Reporting of Exploration Results, Mineral Resources and Ore Reserves (JORC, 2012). The Mineral Resource was classified as Measured, Indicated and Inferred Mineral Resources on the basis of data quality, sample spacing, and lode continuity.

The AG and APG deposits both show good continuity of the main mineralised lodes along strike and down dip which allowed the drill hole intersections to be modelled into coherent, geologically robust wireframes within the drill spacing of 50m-100m by 50m with closer spacing of 25m-50m by 25m-50m within the core of the AG deposit. Relative consistency is evident in the thickness of the structures, along with the continuity of structure between sections. While there is good geological continuity along strike and down dip, there is evidence, and it is interpreted, that local variation of grade and thickness will occur between the current drill spacing arising from the boudin type structures resulting in discontinuous pods of mineralisation.

Measured Resources were based on drill sample spacing of 20m to 25m by 20m to 25m based on geospatial analysis with 25m being approximately 40% of the effective sill. Infill drilling on 20m to 25m by 20m to 25m pierce points (down-dip) has confirmed the continuity of both the grade and geology in-line with the expectation of the style of mineralisation particularly given the high gold nugget observed in all phases of drilling. Of significance, the infill drilling supported the interpretation of the grades and geological structures over several hundred meters in the target areas, with the final phase of drilling understood to be planned to infill the remaining areas of the first two years of production. RPM understands that further closed-spaced grade control drilling is planned prior to mining to further confirm local variability to support short term planning during mining.

For AG and APG areas, RPM considers the 2020-2022 infill and extension drilling undertaken allows good confidence in the grade and geological continuity with the 25m-50m and closer spacing allowing interpretation between section and down dip. As such RPM considers that 25m by 25m spacing suitable for the Measured classification in central area of AG, 50m by 50m spacing suitable for the indicated classification in central and north area of AG and local areas of APG which were selected based on variogram ranges (60% of the sill range) and visual confirmation of structure and grade continuity. RPM however considers that further drilling is required for large areas within the deposit to allow a confirmed estimate of local grade and metal distribution as such proportion of measured resource reported is still low. All other areas are reported the Mineral Resource as Inferred within the 100m by 50m drilling spacing areas and extrapolated to 30 – 50 m from the nearest drill hole.

Limited bulk density samples have been determined for the transition and oxide domains. While RPM considers the applied densities suitable for the style of mineralisation and rock types, further determinations are recommended to enable high confidence of resource category. RPM highlights that the oxide and transition material constitute a very minimal portion of the indicated estimate (1% of tonnes and 5% of metal content) at AG as such does not have a material impact on either the local or global estimates.

All South Gamina was classified as inferred due to the wider drill spacing.

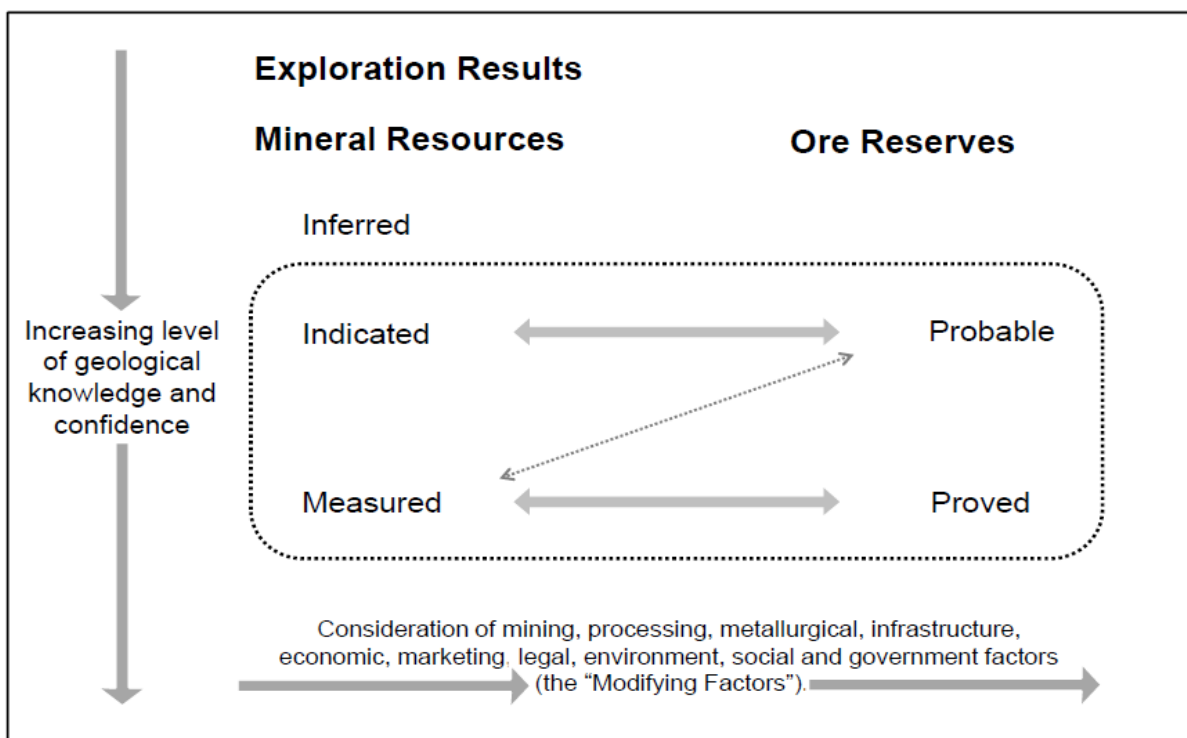


Figure 14: General relationship between Exploration Results, Mineral Resources and Ore Reserves (JORC Code, 2012 edition)

4. JORC Statement of Mineral Resources – 28 February 2022

Results of the independent Mineral Resources estimate for the Project are tabulated in the Statement of Mineral Resources below, which are reported in line with the requirements of the 2012 JORC Code; as such the Statement of Mineral Resources is suitable for public reporting. The Statement of Mineral Resources shown in Table 10.

Within AG, the Mineral Resource is reported at a cut of grade of 0.25 g/t Au within a pit shell that used a gold price of 2,000 USD per troy ounce, and 1.1 g/t Au below the pit shell. The cut off grades were based on estimated mining and processing costs and recovery factors and are detailed in JORC Table 1. It is highlighted that while a 2,000 USD per ounce pit shell was utilised the cut-off grades were estimated based on the gold price of 1,800 USD per troy ounce which is 1.25 times the consensus forecast as of February 2022.

Within APG, the Mineral Resource is reported at a cut of grade of 0.30 g/t Au within a pit shell that used a gold price of 2,000 USD per troy ounce, and 1.1 g/t Au below the pit shell. The cut off grades were based on estimated mining and processing costs and recovery factors and are detailed in JORC Table 1. It is highlighted that while a 2,000 USD per ounces pit shell was utilised the cut-off grades were estimated based on the gold price of 1,800 USD per troy ounce which is 1.25 times the consensus forecast as of February 2021.

South Gamina Resource is reported to a depth of 120m and not reported at depths below 120m.

Table 10: Statement of Mineral Resources by Deposit as at 28th February 2022 Reported at 0.25 g/t Au cut off within pit shells; and 1.1 g/t Au cut off below the pit shells for AG; and 0.3 g/t Au cut off within pit shells, and 1.1 g/t Au cut off below the pit shells for APG, and 0.25 g/t to a depth of 120m for SG (2000 USD Pit).

Area	Class	Oxide			Transition			Fresh			Total		
		Quantity (Mt)	Au (g/t)	Au (Moz)	Quantity (Mt)	Au (g/t)	Au (Moz)	Quantity (Mt)	Au (g/t)	Au (Moz)	Quantity (Mt)	Au (g/t)	Au (Moz)
AG	Measured	0.1	1.4	0.01	0.5	1.3	0.02	7.1	1.4	0.32	7.7	1.4	0.35
	Indicated	0.5	1.0	0.02	1.8	1.1	0.06	28.1	1.3	1.19	30.4	1.3	1.27
	Inferred	0.3	0.9	0.01	1.4	0.8	0.04	15.4	1.5	0.76	17.1	1.5	0.81
	Total	0.9	1.0	0.03	3.7	1.0	0.12	50.6	1.4	2.27	55.2	1.4	2.43
APG	Indicated	0.5	0.7	0.01	1.9	0.7	0.04	6.1	0.8	0.15	8.5	0.7	0.20
	Inferred	1.3	0.7	0.03	5.1	0.7	0.11	27.0	0.7	0.62	33.3	0.7	0.76
	Total	1.8	0.7	0.04	7.0	0.7	0.15	33.1	0.7	0.77	41.9	0.7	0.96
SG	Inferred	0.08	0.74	0.002	0.15	1.09	0.01	1.3	1.3	0.05	1.6	1.2	0.06
Grand Total		2.8	0.8	0.07	10.8	0.8	0.28	85.1	1.1	3.10	98.7	1.1	3.45

Note: The Mineral Resources have been compiled under the supervision of Mr. Jeremy Clark who is a sub-consultant to RPM and a Registered Member of the Australian Institute of Mining and Metallurgy. Mr. Clark has

sufficient experience that is relevant to the style of mineralisation and type of deposit under consideration and to the activity that he has undertaken to qualify as a Competent Person as defined in the JORC Code.

- 1. All Mineral Resources figures reported in the table above represent estimates at 28 February 2022. Mineral Resource estimates are not precise calculations, being dependent on the interpretation of limited information on the location, shape and continuity of the occurrence and on the available sampling results. The totals contained in the above table have been rounded to reflect the relative uncertainty of the estimate. Rounding may cause some computational discrepancies.*
- 2. Mineral Resources are reported in accordance with the Australasian Code for Reporting of Exploration Results, Mineral Resources and Ore Reserves (The Joint Ore Reserves Committee Code – JORC 2012 Edition).*
- 3. The Mineral Resources have been reported at a 100% equity stake and not factored for ownership proportions.*

The total resource at AG and APG is reported at varying cut-off grades are provided in Table 11 below. However, RPM recommends that the Mineral Resource be reported using the criteria shown in Table 10. It is highlighted that Table 11 is not a Statement of Mineral Resources and does not include the use of pit shells to report the quantities rather the application of various cut off grades. As such variations with Table 10 will occur and a direct comparison is not able to be completed.

Table 11: Abujar Mineral Resources at varying cut off grades

COG	AG Measured			AG Indicated			AG Inferred			APG Indicated			APG Inferred			Total		
	Tonnes (Mt)	Au (g/t)	Au (Moz)	Tonnes (Mt)	Au (g/t)	Au (Moz)	Tonnes (Mt)	Au (g/t)	Au (Moz)	Tonnes (Mt)	Au (g/t)	Au (Moz)	Tonnes (Mt)	Au (g/t)	Au (Moz)	Tonnes (Mt)	Au (g/t)	Au (Moz)
0.1	8.6	1.3	0.4	42.2	1.0	1.4	45.5	0.9	1.3	12.0	0.6	0.2	66.6	0.6	1.2	175.0	0.8	4.5
0.2	8.1	1.3	0.3	39.9	1.1	1.4	43.6	0.9	1.3	11.9	0.6	0.2	64.2	0.6	1.2	167.7	0.8	4.4
0.3	7.2	1.5	0.3	34.5	1.2	1.4	38.3	1.0	1.2	10.2	0.7	0.2	56.2	0.6	1.1	146.5	0.9	4.3
0.4	6.1	1.7	0.3	28.1	1.4	1.3	31.1	1.1	1.1	7.9	0.8	0.2	40.7	0.7	0.9	113.9	1.1	3.9
0.5	5.2	1.9	0.3	23.0	1.6	1.2	24.7	1.3	1.1	5.7	0.9	0.2	27.1	0.9	0.8	85.7	1.3	3.5
0.6	4.4	2.1	0.3	19.2	1.8	1.1	19.4	1.5	1.0	4.3	1.1	0.1	17.7	1.0	0.6	65.0	1.5	3.1
0.7	3.8	2.4	0.3	16.2	2.1	1.1	15.9	1.7	0.9	3.3	1.2	0.1	12.2	1.2	0.5	51.3	1.7	2.9
0.8	3.2	2.6	0.3	13.9	2.3	1.0	13.6	1.9	0.8	2.5	1.3	0.1	9.3	1.3	0.4	42.6	1.9	2.6
0.9	2.8	2.9	0.3	12.2	2.5	1.0	12.0	2.0	0.8	2.0	1.5	0.1	7.2	1.5	0.3	36.1	2.1	2.5
1.0	2.5	3.2	0.3	10.8	2.7	0.9	10.7	2.2	0.8	1.6	1.6	0.1	5.9	1.6	0.3	31.5	2.3	2.3
1.1	2.2	3.5	0.2	9.7	2.9	0.9	9.6	2.3	0.7	1.3	1.7	0.1	4.5	1.8	0.3	27.2	2.5	2.2
1.2	2.0	3.7	0.2	8.8	3.1	0.9	8.5	2.4	0.7	1.1	1.8	0.1	3.9	1.9	0.2	24.2	2.7	2.1
1.3	1.8	4.0	0.2	8.1	3.2	0.8	7.7	2.6	0.6	0.9	1.9	0.1	2.9	2.1	0.2	21.4	2.8	2.0
1.4	1.7	4.2	0.2	7.4	3.4	0.8	6.8	2.7	0.6	0.7	2.1	0.05	2.5	2.2	0.2	19.2	3.0	1.9
1.5	1.5	4.5	0.2	6.9	3.5	0.8	6.1	2.9	0.6	0.6	2.2	0.04	2.0	2.4	0.2	17.0	3.2	1.8
1.6	1.4	4.7	0.2	6.4	3.7	0.8	5.4	3.1	0.5	0.5	2.3	0.04	1.5	2.8	0.1	15.2	3.4	1.7
1.7	1.3	4.9	0.2	5.9	3.8	0.7	4.9	3.2	0.5	0.4	2.4	0.03	1.3	2.9	0.1	13.9	3.6	1.6
1.8	1.2	5.1	0.2	5.5	4.0	0.7	4.4	3.4	0.5	0.4	2.5	0.03	1.2	3.0	0.1	12.8	3.7	1.5
1.9	1.1	5.4	0.2	5.1	4.2	0.7	4.1	3.5	0.5	0.3	2.6	0.03	1.1	3.1	0.1	11.9	3.9	1.5
2.0	1.1	5.6	0.2	4.8	4.3	0.7	3.8	3.6	0.4	0.3	2.6	0.03	1.1	3.1	0.1	11.0	4.0	1.4
2.5	0.8	6.7	0.2	3.6	5.0	0.6	2.4	4.4	0.3	0.1	3.4	0.01	0.7	3.7	0.1	7.6	4.9	1.2
3.0	0.6	7.7	0.2	2.7	5.8	0.5	1.7	5.0	0.3	0.1	3.9	0.01	0.4	4.1	0.1	5.6	5.6	1.0

*SG included with AG

ENDS

This release has been authorised on behalf of Tietto Minerals Limited by:

Dr Caigen Wang
Managing Director
Tel: +61 8 942 08270

Mark Strizek
Executive Director
Mob: +61 431 084 305

Competent Persons' Statements

The information in this report that relates to Exploration Targets and Exploration Results is based on information compiled by Mr Mark Strizek, a Competent Person who is a Member of The Australasian Institute of Mining and Metallurgy. Mr Strizek is a non-executive director of the Company. Mr Strizek has sufficient experience that is relevant to the style of mineralisation and type of deposit under consideration and to the activity being undertaken to qualify as a Competent Person as defined in the 2012 edition of the "Australasian Code for Reporting of Exploration Results, Mineral Resources and Ore Reserves". Mr Strizek consents to the inclusion in the announcement of the matters based on his information in the form and context in which it appears. Additionally, Mr Strizek confirms that the entity is not aware of any new information or data that materially affects the information contained in the ASX releases referred to in this report.

The information in this report that relates to Mineral Resources is based on information evaluated by Mr Jeremy Clark who is a Member of The Australasian Institute of Mining and Metallurgy (MAusIMM) and who has sufficient experience relevant to the style of mineralisation and type of deposit under consideration and to the activity which he is undertaking to qualify as a Competent Person as defined in the 2012 edition of the "Australasian Code for Reporting of Exploration Results, Mineral Resources and Ore Reserves". Mr Clark is an associate of RPM and he consents to the inclusion of the estimates in the report of the Mineral Resource in the form and context in which they appear.

Compliance Statement

This report contains information extracted from ASX market announcements reported in accordance with the 2012 edition of the "Australasian Code for Reporting of Exploration Results, Mineral Resources and Ore Reserves" ("2012 JORC Code") and available for viewing at www.tietto.com. Includes results reported previously and published on ASX platform, 16 January 2018, 27 March 2018, 23 April 2018, 8 May 2018, 7 June 2018, 4 October 2018, 1 November 2018, 28 November 2018, 31 January 2019, 26 February 2019, 12 March 2019, 19 March 2019, 9 April 2019, 9 May 2019, 30 May 2019, 9 July 2019, 26 July 2019, 2 October 2019, 24 October 2019, 12 December 2019, 23 January 2020, 20 February 2020, 10 March 2020, 24 March 2020, 2 April 2020, 9 April 2020, 23 April 2020, 3 June 2020, 9 June 2020, 25 June 2020, 2 July 2020, 21 July 2020, 20 July 2020, 29 July 2020, 19 August 2020, 9 September 2020, 24 September 2020, 26 October 2020, 11 December 2020, 18 January 2021, 12 February 2021, 23 February 2021, 23 March 2021, 6 April 2021, 8 April 2021, 20 April 2021, 3 May 2021, 6 May 2021, 11 May 2021, 21 May 2021, 27 May 2021, 11 June 2021, 16 June 2021, 12 July 2021, 10 September 2021, 22 September 2021, 5 October 2021, 13 October 2021, 21 October 2021, 8 November 2021, 12 November 2021, 16 November 2021, 22 November 2021, 30 November 2021, 10 December 2021, 22 December 2021, 18 January 2022, 20 January 2022, 24 January 2022, 7 February 2022, 14 February 2022, 18 February 2022, 25 February 2022, 15 March 2022 and 29 March 2022. The Company confirms that all material assumptions and technical parameters underpinning the Mineral Resources and Ore Reserves continue to apply and have not materially changed. The Company confirms that it is not aware of any new information or data that materially affects the information included in the previous announcements.

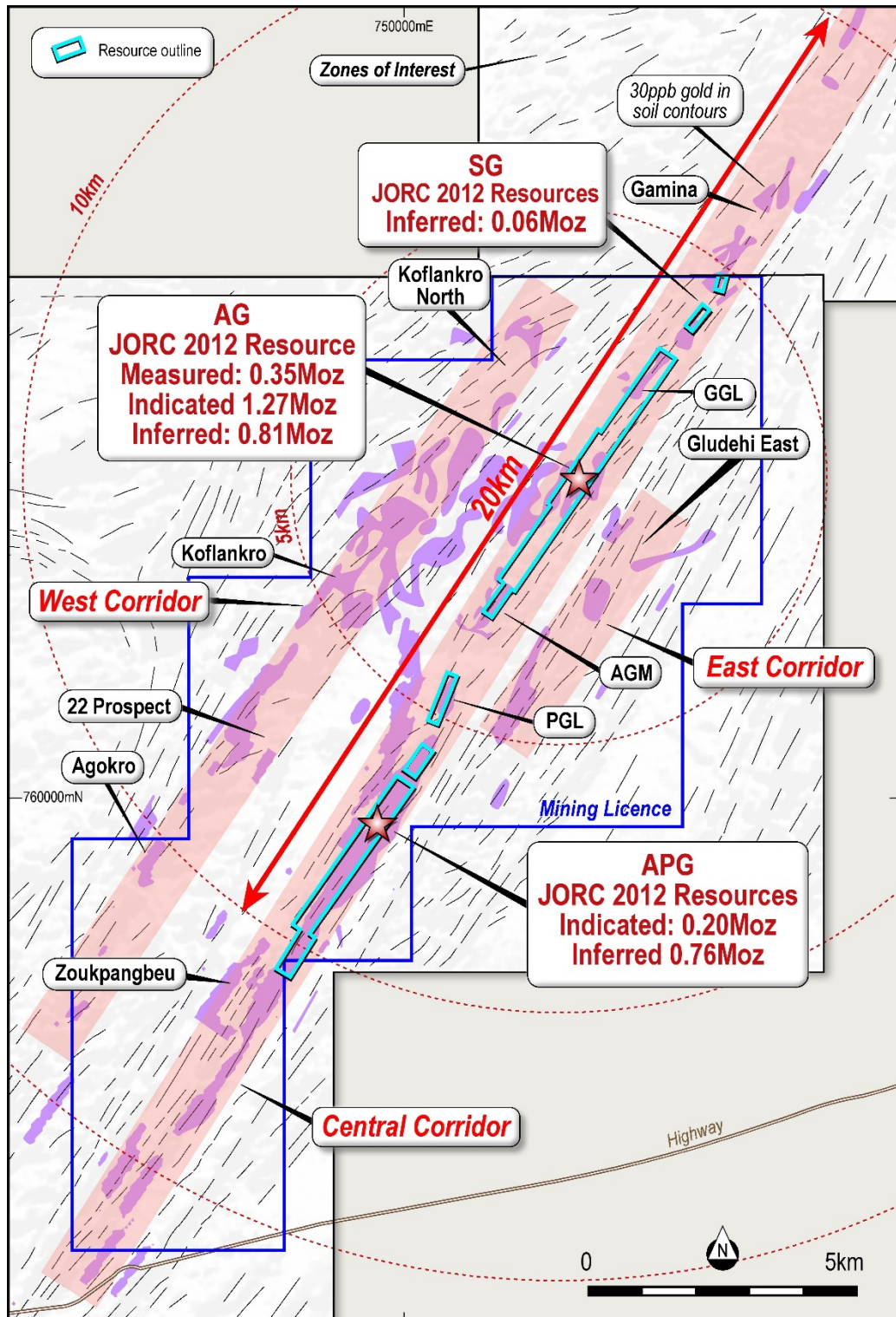


Figure 15: Plan view showing Abujar Project

Abujar Gold Project, Côte d'Ivoire

The Abujar Gold Project is located approximately 30km from the major regional city of Daloa in central western Côte D'Ivoire. It is close to good regional and local infrastructure to facilitate exploration and development being only 15km from nearest tarred road and grid power.

The Abujar Gold Project is comprised of three contiguous exploration tenements, Middle, South and North tenement, with a total land area of 1,114km², of which less than 10% has been explored. It features an NNE-orientated gold corridor over 70km striking across three tenements.

In December 2020, a gold exploitation (mining) licence within the Abujar Middle exploration tenement was granted. The mining tenement covers an area of 120.36km².

Tietto is well placed to grow its resource inventory. It has substantially advanced the project since starting exploration in mid-2015 with the identification of 3.45 million ounces Measured, Indicated, and Inferred JORC 2012 Mineral Resources and has completed metallurgical test work and a DFS. Tietto is currently constructing the Abujar Gold Plant and expects to produce first gold in Q4 CY2022.

Section 1 of the JORC Code, 2012 Edition – Table 1

Sampling Techniques and Data

Criteria	JORC Code explanation	Commentary
Sampling techniques	<ul style="list-style-type: none"> • <i>Nature and quality of sampling (e.g. cut channels, random chips, or specific specialised industry standard measurement tools appropriate to the minerals under investigation, such as down hole gamma sondes, or handheld XRF instruments, etc). These examples should not be taken as limiting the broad meaning of sampling.</i> • <i>Include reference to measures taken to ensure sample representivity and the appropriate calibration of any measurement tools or systems used.</i> • <i>Aspects of the determination of mineralisation that are Material to the Public Report. In cases where 'industry standard' work has been done this would be relatively simple (e.g. 'reverse circulation drilling was used to obtain 1 m samples from which 3 kg was pulverised to produce a 30 g charge for fire assay'). In other cases more explanation may be required, such as where there is coarse gold that has inherent sampling problems. Unusual commodities or mineralisation types (e.g. submarine nodules) may warrant disclosure of detailed information.</i> 	<ul style="list-style-type: none"> • Samples at AG, APG and SG project areas were collected using drilling techniques including Air Core Drilling (AC), Reverse Circulation (RC), however Diamond Drilling (DD) is the predominant drilling method. Holes were generally angled at 60° to 90° towards the northwest at AG to optimally intersect the mineralised zones, however some drilling was orientated to the southeast to target near surface mineralisation due to drill location restrictions. Within APG the recent holes were drilled to the Northeast due to the reinterpreted westerly dip of the mineralisation. • AC samples were collected every 1m from cyclone, and 2m composite samples which is combined with two 1/3 of each one meter sample were sent for assaying. No Aircore samples were used in the estimates reported in the Report. • RC samples were collected as 1m samples from the cyclone, which were subsequently spear sampled to form 2 m samples which were subsequently sent to the laboratory. All one meter samples were split using a riffle splitter with 1/4 of the same retained in the plastic bags, the remainder was re-split with 1/4 retained in calico bag and the remainder discarded. • Diamond core was logged both for geological and mineralised structures as noted above with all 2021 drilling geotechnically logged. The core was then cut in half using a diamond brick cutting saw on 1m intervals. Typically, the core was sampled to geological intervals as defined by the geologist within the even two metre sample intervals utilised. The right hand side of the core was always submitted for analysis with the left side being stored in trays on site. • No QAQC was completed during the 2015 drilling program, however the vast majority of the data is sourced from the 2016-2022 drilling which implemented an industry best practice QAQC program, to provide verification of the sample procedure, the sample preparation and the analytical precision and accuracy of the primary laboratory. • Sampling and QAQC procedures were carried out to industry standards upon the advice of RPM.

Criteria	JORC Code explanation	Commentary
		<ul style="list-style-type: none"> Sample preparation was completed by independent international accredited laboratories ALS Ghana in 2016 and Intertek Minerals Ltd in 2018 to 2022. Following cutting or splitting, the samples were bagged by the Client employees and then sent to the laboratory for preparation. These samples were subsequently sent to Ghana for analysis via 30g fire assay in 2016-2017 (ALS Ghana) and 150g fire assay in 2018-2022 (Intertek Ghana).
Drilling techniques	<ul style="list-style-type: none"> Drill type (e.g. core, reverse circulation, open-hole hammer, rotary air blast, auger, Bangka, sonic, etc) and details (e.g. core diameter, triple or standard tube, depth of diamond tails, face-sampling bit or other type, whether core is oriented and if so, by what method, etc). 	<ul style="list-style-type: none"> AC drilling size is 89 mm, RC drilling comprising 105mm diameter face sampling bit. Diamond drilling carried out with mostly NTW and some HQ sized equipment. PQ-size rods and casing were used at the top the holes to stabilise the collars although no samples were taken from the PQ size core.
Drill sample recovery	<ul style="list-style-type: none"> Method of recording and assessing core and chip sample recoveries and results assessed. Measures taken to maximise sample recovery and ensure representative nature of the samples. Whether a relationship exists between sample recovery and grade and whether sample bias may have occurred due to preferential loss/gain of fine/coarse material. 	<ul style="list-style-type: none"> Within the Diamond drilling typically core recoveries ranged between 85% and 100% for all holes with no significant issues noted. All 2019 - 2022 holes have recoveries above 95% in the majority of the mineralised areas. Some low recovery are associated with intensely fractured or faulted intervals and the more intensely weathered upper zone however These low recoveries are not considered material to the total Mineral Resource currently estimated. AC, RC samples were visually checked for recovery, moisture and contamination. RPM notes that it has relied on information for the majority of holes for sample recovery based on drilling plods however considers sample recovery suitable and notes that the majority of the Mineral Resources reported are underpinned by diamond holes. No relationship exists between sample recovery and grade.
Logging	<ul style="list-style-type: none"> Whether core and chip samples have been geologically and geotechnically logged to a level of detail to support appropriate Mineral Resource estimation, mining studies and metallurgical studies. Whether logging is qualitative or quantitative in nature. Core (or costean, channel, etc) photography. The total length and percentage of the relevant intersections logged. 	<ul style="list-style-type: none"> All holes were field logged by company geologists. Lithological, alteration and mineralogical nomenclature of the deposit as well as sulphide content were recorded. Geotechnical and structural data measured commenced in the latter part of the 2019 program and the later 2020-2022 holes. Photography and recovery measurements were carried out by assistants under a geologist's supervision. The logging for all RC holes is also recorded on a logging "chip-board", where the chips for each metre are glued to a board to form a visual log of the entire hole All drill holes were logged in full and considered suitable to underpin a Mineral Resource estimate with the classifications applied. Logging was qualitative and quantitative in nature including mineralisation, mineralogy

Criteria	JORC Code explanation	Commentary
Sub-sampling techniques and sample preparation	<ul style="list-style-type: none"> <i>If core, whether cut or sawn and whether quarter, half or all core taken.</i> <i>If non-core, whether riffled, tube sampled, rotary split, etc and whether sampled wet or dry.</i> <i>For all sample types, the nature, quality and appropriateness of the sample preparation technique.</i> <i>Quality control procedures adopted for all sub-sampling stages to maximise representivity of samples.</i> <i>Measures taken to ensure that the sampling is representative of the in situ material collected, including for instance results for field duplicate/second-half sampling.</i> <i>Whether sample sizes are appropriate to the grain size of the material being sampled.</i> 	<p>and lithologies</p> <ul style="list-style-type: none"> HQ and NQ core was cut in half using a core saw. Typically the core was sampled to major geological intervals as defined by the geologist initially within the even two metre sample intervals for early programs prior to switching to 1m in since 2019. All samples were collected from the same side of the core. AC, RC samples were collected as 1m samples from the cyclone, which were subsequently composited using as spear samples to form 2 m samples. Sampling of diamond core and AC, RC chips used industry standard techniques. Sample preparation for the 2020-2022 drilling is detailed below; previous releases detail the 2016 and 2018 drilling results. After drying the sample is subject to a primary crush to 2mm. Sample is split through a riffle splitter until 250gm is left (this involves 4-5 splits through the riffle splitter). The 250gm sample is milled through an LM5 using a single puck to 90% <75 micron Milled sample is homogenised through a matt roll with a 150gm routine sample collected using a spoon around the quadrants and sent to Ghana for analysis and the remaining 100gm kept at Intertek for checks. Field QC procedures involved the use of 2 types of certified reference materials (1 in 20) which is certified by Geostats Ltd, Primary RC duplicates: Generated from the first splitter off the rig and inserted 5% (1 in 20 samples). This sample is collected from a spear sample from the reject material of the primary split. Primary DD duplicate: Generated by cutting the remaining half core into a ¼ and sampled. Coarse blank samples: Inserted 1 in every 20 samples Laboratory Internal Duplicates and Standards Sample sizes are considered appropriate to correctly represent the moderately nuggetty gold mineralisation based on: the style of mineralisation, the thickness and consistency of the intersections, the sampling methodology and assay value ranges for Au.
Quality of assay data and laboratory tests	<ul style="list-style-type: none"> <i>The nature, quality and appropriateness of the assaying and laboratory procedures used and whether the technique is considered partial or total.</i> <i>For geophysical tools, spectrometers, handheld XRF instruments, etc, the parameters used in determining the analysis including instrument make and model, reading times, calibrations factors applied and their</i> 	<ul style="list-style-type: none"> The analytical techniques used Fire Assay on 150g pulp samples. No geophysical tools were used to determine any element concentrations used in this Mineral Resource estimate. Sample preparation checks for fineness were carried out by the laboratory as part of internal procedures to ensure the grind size of 2mm was being attained. Laboratory

Criteria	JORC Code explanation	Commentary
	<p><i>derivation, etc.</i></p> <ul style="list-style-type: none"> <i>Nature of quality control procedures adopted (e.g. standards, blanks, duplicates, external laboratory checks) and whether acceptable levels of accuracy (i.e. lack of bias) and precision have been established.</i> 	<p>QAQC includes the use of internal standards using certified reference material, and pulp replicates. No anomalous assays were noted in information provided to RPM or from discussions with the Client.</p> <ul style="list-style-type: none"> The QAQC results confirm that acceptable levels of accuracy and precision have been established for the Classifications applied following an independent review by RPM.
<p>Verification of sampling and assaying</p>	<ul style="list-style-type: none"> <i>The verification of significant intersections by either independent or alternative company personnel.</i> <i>The use of twinned holes.</i> <i>Documentation of primary data, data entry procedures, data verification, data storage (physical and electronic) protocols.</i> <i>Discuss any adjustment to assay data.</i> 	<ul style="list-style-type: none"> The Company has developed logging and sampling procedures that is based on the African experience of the local teams and subsequently reviewed by RPM during the site visits that confirmed the processes and protocols implemented giving the results a high level of confidence. The Company geologists log the core and RC samples according to the existing lithological, alteration and mineralogical nomenclature of the deposits as well as sulphide, veining and structural content. Photography and recovery measurements were carried out by assistants under a geologist's supervision. The logging for all RC holes is also recorded on a "chip-board", where the chips for each metre are glued to a board to form a visual log of the entire hole. Twinned holes have not been drilled as not considered appropriate as the Company has been responsible for all holes. Logging records were mostly registered in physical format and were input into a digital format. The core photographs, collar coordinates and down the hole surveys were received in digital format. Assay values that were below detection limit were adjusted to equal half of the detection limit value. Un-sampled intervals were assumed to have no mineralisation and they were therefore set to blank in the database; however these are minimal. The selective original data review and site visit observations carried out by RPM did not identify any material issues with the data entry or digital data. In addition, RPM considers that the onsite data management system meets industry standard which minimizes potential 'human' data-entry errors and no systematic fundamental data entry errors or data transfer errors.
<p>Location of data points</p>	<ul style="list-style-type: none"> <i>Accuracy and quality of surveys used to locate drill holes (collar and down-hole surveys), trenches, mine workings and other locations used in Mineral Resource estimation.</i> 	<ul style="list-style-type: none"> All drill hole and trench collar locations were surveyed utilising the differential GPS methods by third party surveyors. RPM notes that the DGPS system utilised is typically within a 10 cm accuracy range which is suitable for the classification applied. The Client's drilling teams utilised the Reflex EZ-shot instrument to measure deviations in azimuth and inclination angles for all holes;

Criteria	JORC Code explanation	Commentary
	<ul style="list-style-type: none"> <i>Specification of the grid system used.</i> <i>Quality and adequacy of topographic control.</i> 	<p>however, vertical holes were not surveyed. The first measurement is taken at 5 m depth, and then at approximately every 30 to 50m depth interval and at the end of the hole.</p> <ul style="list-style-type: none"> Small scale artisanal mining has been undertaken on several areas within the project. This mining is restricted typically to the upper 10m of the oxide material however is variable in depth and extent with recent underground mining occurring in the fresh rock. For AG area, the latest provided topographic survey models based on satellite imagery. While small scale UG mining activity is being undertaken drilling to date has not intersected any workings near surface. Previous resource depleted small areas of the resources, however recent drilling in these areas did not indicate any major workings. For AGP area, no significant UG mining has been undertaken as such the latest topography was utilised as the depletion.
<p>Data spacing and distribution</p>	<ul style="list-style-type: none"> <i>Data spacing for reporting of Exploration Results.</i> <i>Whether the data spacing and distribution is sufficient to establish the degree of geological and grade continuity appropriate for the Mineral Resource and Ore Reserve estimation procedure(s) and classifications applied.</i> <i>Whether sample compositing has been applied.</i> 	<ul style="list-style-type: none"> Drill hole collars were generally spaced on initially 100 m by 50 m grid in both deposits with recent drilling including infill drilling on 50m by 50m spacing within AG and APG areas. The drill hole spacing and distribution is considered sufficient to establish the degree of continuity appropriate for the Inferred and Indicated Mineral Resource estimation procedures. Three largest objects were selected for variogram analysis for AG north, central and south, and the two largest objects for were selected for variogram analysis for APG area. The most prevalent sample lengths inside the mineralised wireframes was 1m and 2 m, and as a result, 1m was chosen as the composite length. The samples inside the mineralised wireframes were then composited to 1 m length.
<p>Orientation of data in relation to geological structure</p>	<ul style="list-style-type: none"> <i>Whether the orientation of sampling achieves unbiased sampling of possible structures and the extent to which this is known, considering the deposit type.</i> <i>If the relationship between the drilling orientation and the orientation of key mineralised structures is considered to have introduced a sampling bias, this should be assessed and reported if material.</i> 	<ul style="list-style-type: none"> No bias was interpreted to be introduced as most drill holes are angled to northwest in AG and SG, which is approximately perpendicular to the orientation of the mineralised trends are interpreted being comprised of southeast-dipping lodes striking 35° dipping at varying angles of inclination typically between 60° and 80°. APG has a westerly dipping orientation, as such recent holes have been drilled to the southeast. All previous holes were drilled to the northwest, however given the large drill spacing this is not considered to be a bias in the sampling and was considered during interpretation.

Criteria	JORC Code explanation	Commentary
Sample security	<ul style="list-style-type: none"> The measures taken to ensure sample security. 	<ul style="list-style-type: none"> Chain of custody is managed by the Client's senior site geologists and geotechnicians. Samples are stored in a core shed at site and samples were delivered to the laboratory by client geologists. Client employees have no further involvement in the preparation or analysis of the samples.
Audits or reviews	<ul style="list-style-type: none"> The results of any audits or reviews of sampling techniques and data. 	<ul style="list-style-type: none"> Detailed reviews of sampling techniques were carried out on each site visit by RPM in July 2016, July 2018 and again in October 2019.

Section 2 of the JORC Code, 2012 Edition – Table 1

Criteria	JORC Code explanation	Commentary
Mineral tenement and land tenure status	<ul style="list-style-type: none"> Type, reference name/number, location and ownership including agreements or material issues with third parties such as joint ventures, partnerships, overriding royalties, native title interests, historical sites, wilderness or national park and environmental settings. The security of the tenure held at the time of reporting along with any known impediments to obtaining a license to operate in the area. 	<ul style="list-style-type: none"> The Project is contained within three adjacent exploration licenses (Zoukougbeu, Zahibo and Issia licenses) which are currently held by third party companies, of which Tietto or its wholly owned subsidiaries are part owners. All resources are contained within the Zahibo tenement. The tenements are in good standing with no known impediment to future grant of a mining lease (which is under application).
Exploration done by other parties	<ul style="list-style-type: none"> Acknowledgment and appraisal of exploration by other parties. 	<ul style="list-style-type: none"> No exploration programs have been conducted by other parties on the Project. The license area was not historically known as a prospective region for gold, but recent artisanal workings revealed the presence of primary gold mineralisation in artisanal pits and small-scale underground mining.
Geology	<ul style="list-style-type: none"> Deposit type, geological setting and style of mineralisation. 	<ul style="list-style-type: none"> The AG-APG-SG Deposits are located within the Proterozoic Birimian rocks of the Man shield. It is situated on the Daloa 1:200,000 geologic sheet, 30km west of Daloa. It is in the Hana-Lobo belt, east of the Sassandra fault that marks the boundary between the Man shield (Archean) and Eburnean domain. The regional trend is NNE to NE. The AG-APG-SG deposits resemble typical shear zone deposits of the West African granite-greenstone terrane. The deposits themselves are associated with a major regional shear zone and are developed in a granodiorite host. Mineralisation may be spatially related to the emplacement of intrusives. The gold mineralisation is mesothermal in origin and occurs as free gold in quartz vein stockworks and zones of silicification, associated with pyrite and chalcopyrite. The gold mineralisation is found in linear zones with the contacts showing evidence of shearing. Free gold is frequently observed. Alteration is weak to strong depending on the development of the system. Two types of deformation are present in the

Criteria	JORC Code explanation	Commentary
		drill cores: ductile deformation and brittle deformation. The gold mineralisation is related to deformed granodiorite, in shear zones, with sulphides (mainly pyrite and minor chalcopyrite) associated with visible gold. Alteration is characterized by chlorite, sericite, calcite, secondary quartz and disseminated pyrite. This assemblage is well developed in schistose, foliated rocks with presence of quartz veins or veinlets.
Drill hole information	<ul style="list-style-type: none"> A summary of all information material to the understanding of the exploration results including a tabulation of the following information for all Material drill holes: <ul style="list-style-type: none"> easting and northing of the drill hole collar elevation or RL (Reduced Level – elevation above sea level in metres) of the drill hole collar dip and azimuth of the hole down hole length and interception depth hole length If the exclusion of this information is justified on the basis that the information is not Material and this exclusion does not detract from the understanding of the report, the Competent Person should clearly explain why this is the case. 	<ul style="list-style-type: none"> Drill hole locations are shown on the map within the body of this Mineral Resource report and the ASX release. All information has been included in the appendices. No RC or DD drill hole information has been excluded however no AC drilling is utilised.
Data aggregation methods	<ul style="list-style-type: none"> In reporting Exploration Results, weighting averaging techniques, maximum and/or minimum grade truncations (e.g. cutting of high grades) and cut-off grades are usually Material and should be stated. Where aggregate intercepts incorporate short lengths of high grade results and longer lengths of low grade results, the procedure used for such aggregation should be stated and some typical examples of such aggregations should be shown in detail. The assumptions used for any reporting of metal equivalent values should be clearly stated. 	<ul style="list-style-type: none"> Exploration results are not being reported No aggregation of intercepts was carried out. Drilling intervals are predominantly 1m and 2m. AC, RC samples were collected as 1m samples from the cyclone, which were subsequently spear samples to form 2 m samples which were subsequently sent to the laboratory Metal equivalent values are not being reported.
Relationship between mineralisation widths and intercept lengths	<ul style="list-style-type: none"> These relationships are particularly important in the reporting of Exploration Results. If the geometry of the mineralisation with respect to the drill hole angle is known, its nature should be reported. If it is not known and only the down hole lengths are reported, there should be a clear statement to this effect (e.g. 'down hole length, true width not known'). 	<ul style="list-style-type: none"> Most drill holes are angled to northwest at AG, which is approximately perpendicular to the orientation of the mineralised trends as all deposits have similar styles of mineralisation which was interpreted as being comprised of southeast-dipping lodes striking 30° dipping at varying angles of inclination typically between 60° and 80°. APG is interpreted to the westerly dip with changes to drilling orientation completed at such. Sections are provided in the main body of the report and the press release however exploration results are not being reported
Diagrams	<ul style="list-style-type: none"> Appropriate maps and sections (with scales) and tabulations of intercepts should be included for any significant discovery being 	<ul style="list-style-type: none"> Relevant diagrams have been included within the Mineral Resource report main

Criteria	JORC Code explanation	Commentary
	<i>reported. These should include, however not be limited to a plan view of drill hole collar locations and appropriate sectional views.</i>	body of report and ASX release However exploration results are not being reported
Balanced Reporting	<ul style="list-style-type: none"> • Accuracy and quality of surveys used to locate drill holes (collar and down-hole surveys), trenches, mine workings and other locations used in Mineral Resource estimation. • Where comprehensive reporting of all Exploration Results is not practicable, representative reporting of both low and high grades and/or widths should be practiced to avoid misleading reporting of Exploration Results. 	<ul style="list-style-type: none"> • All drill hole and trench collar locations were surveyed utilising the differential GPS methods by third party surveyors. DGPS system utilised it typically within 10 cm accuracy range. • Drilling teams utilised the Reflex EZ-shot instrument to measure deviations in azimuth and inclination angles for all holes; however, vertical holes were not surveyed. The first measurement is taken at 12 m depth, and then at approximately every 30m to 50m depth interval and at the end of the hole.
Other substantive exploration data	<ul style="list-style-type: none"> • Other exploration data, if meaningful and material, should be reported including (however not limited to): geological observations; geophysical survey results; geochemical survey results; bulk samples - size and method of treatment; metallurgical test results; bulk density, groundwater, geotechnical and rock characteristics; potential deleterious or contaminating substances. 	<ul style="list-style-type: none"> • All interpretations for each deposit are consistent with observations made and information gained during drilling at the project.
Further work	<ul style="list-style-type: none"> • The nature and scale of planned further work (e.g. tests for lateral extensions or depth extensions or large-scale step-out drilling). • Diagrams clearly highlighting the areas of possible extensions, including the main geological interpretations and future drilling areas, provided this information is not commercially sensitive. 	<ul style="list-style-type: none"> • Further exploration work has been planned which will focus on expanding the resource and infill drilling to increase the confidence in the resource. • Subject to several years of systematic exploration the Project contains numerous gold anomalous areas with particular focus on the AG Deposit. While encompassing the entire Project, this Report focused on the estimation of Mineral Resources within three areas (AG, APG and SG); however, several other anomalous areas have been identified within the Project. So further exploration works could be planned. • Infill and extensional drilling during 2019-2022 on the AG Mineral Resource account for the classification update.

Section 3 of the JORC Code, 2012 Edition – Table 1

Estimation and Reporting of Mineral Resources

Criteria	JORC Code explanation	Commentary
Database integrity	<ul style="list-style-type: none"> Measures taken to ensure that data has not been corrupted by, for example, transcription or keying errors, between its initial collection and its use for Mineral Resource estimation purposes. Data validation procedures used. 	<ul style="list-style-type: none"> The data base is systematically audited by Client's senior geologists. All drill logs are validated digitally by the database geologist once assay results are returned from the laboratory. The selective original data review and site visit observations carried out by RPM did not identify any material issues with the data entry or digital data. In addition, RPM considers that the onsite data management system meets industry standard which minimizes potential 'human' data-entry errors and no systematic fundamental data entry errors or data transfer errors; accordingly, RPM considers the integrity of the digital database to be sound. RPM performed data audits in Surpac and in excel.
Site visits	<ul style="list-style-type: none"> Comment on any site visits undertaken by the Competent Person and the outcome of those visits. If no site visits have been undertaken indicate why this is the case. 	<ul style="list-style-type: none"> Site visits have been conducted by Jeremy Clark (RPM) in July 2016 and subsequently by Philippe Baudry in July 2018 and in October 2019 and December 2021 by Jeremy Clark. During the visits the visitors reviewed the outcrops, drill-hole location and core sheds as well as held various discussions with site personnel. RPM sighted mineralised drill-hole intersections of all the deposits, down hole surveys and assay data, laboratory facilities, sampling and reviewed survey data acquisition protocols, assay procedures, bulk density determination, logging and sample preparation procedures and quality control (QC) results. RPM concluded that the data was adequately acquired and validated following industry best practices.
Geological interpretation	<ul style="list-style-type: none"> Confidence in (or conversely, the uncertainty of) the geological interpretation of the mineral deposit. Nature of the data used and of any assumptions made. The effect, if any, of alternative interpretations on Mineral Resource estimation. The use of geology in guiding and controlling Mineral Resource estimation. The factors affecting continuity both of grade and geology. 	<ul style="list-style-type: none"> The confidence in the geological interpretation is based on good quality drilling. All deposits have similar styles of mineralisation which was interpreted as being comprised of northeast- striking lodes with striking degrees of approximately 35°. Lode dipping at varying angles of inclination typically between 60 and 75° for AG, SG and APG while AG and SG dip to southeast and APG dip to northwest. These lodes appear to coincide with strong linear geological structures which are offset by several offsetting faults. RPM defined 130 discrete bodies for the AG area, and 94 discrete bodies for the APG area and 9 in South Gamina based on the orientation and shape of the mineralisation.

Criteria	JORC Code explanation	Commentary
		<p>These are still some sub domains that are likely separated by interpreted fault zones identified from geophysical surveys; however, the style of mineralisation appears the same between domains although grade ranges varies.</p> <ul style="list-style-type: none"> No additional high grade domaining was undertaken within the deposit based on statistic reviews however further infill drilling may confirm the presence and will be reviewed as further work is completed. Current interpretation is considered suitable for the classification applied maximum Indicated. Outcrops of mineralisation and host rocks within the Project support the geometry of the mineralisation.
Dimensions	<ul style="list-style-type: none"> <i>The extent and variability of the Mineral Resource expressed as length (along strike or otherwise), plan width, and depth below surface to the upper and lower limits of the Mineral Resource.</i> 	<ul style="list-style-type: none"> Mineral Resource Estimate is comprised of three areas. The AG Mineral Resource area extends over a strike length of 8,800m (from 763,500mN – 772,300mN), has a typical width of 90m (from 750,400mE – 752,000mE). It includes the 750m vertical interval from -450mRL to 300mRL. The APG Mineral Resource area extends over a strike length of 8,100m (from 756,000mN – 764,100mN), has a typical width of 60m (from 746,100mE – 747,500mE). It includes the 480m vertical interval from -130mRL to 350mRL. The South Gamina Area is located to the north of AG for a further 1.2km.
Estimation and modelling techniques	<ul style="list-style-type: none"> <i>The nature and appropriateness of the estimation technique(s) applied and key assumptions, including treatment of extreme grade values, domaining, interpolation parameters and maximum distance of extrapolation from data points. If a computer assisted estimation method was chosen include a description of computer software and parameters used.</i> <i>The availability of check estimates, previous estimates and/or mine production records and whether the Mineral Resource estimate takes appropriate account of such data.</i> <i>The assumptions made regarding recovery of by-products.</i> <i>Estimation of deleterious elements or other non-grade variables of economic significance (e.g. sulphur for acid mine</i> 	<ul style="list-style-type: none"> The Ordinary Kriging (“OK”) algorithm was selected for grade interpolation of Au for AG , APG and while ID was used for SG. The Inverse Distance (“ID”) and Nearest Neighbour (“NN”) algorithms were also assessed as a way of validating the OK estimation results. A maximum distance of 30m was generally applied; however in areas of 100m at depth with no infill drilling the distance was increased if depth consistency was observed between the section and the main lodes which were extrapolated to 50m, both areas are classified as inferred. Additionally, due to the limited drilling near surface if mineralisation was observed in the alluvial pits, the lodes were extrapolated to surface. With additional drilling which intersected with the main objects, the largest lode of objects 32, 40, 43 and 51 were selected for the variogram analysis for the AG south, central and north areas (object 43 analysis results were only used for its own estimation). The analyses indicated that for AG area within the highly continuous along

Criteria	JORC Code explanation	Commentary
	<p><i>drainage characterisation).</i></p> <ul style="list-style-type: none"> • <i>In the case of block model interpolation, the block size in relation to the average sample spacing and the search employed.</i> • <i>Any assumptions behind modelling of selective mining units.</i> • <i>Any assumptions about correlation between variables.</i> • <i>Description of how the geological interpretation was used to control the resource estimates.</i> • <i>Discussion of basis for using or not using grade cutting or capping.</i> • <i>The process of validation, the checking process used, the comparison of model data to drill hole data, and use of reconciliation data if available.</i> 	<p>strike sheets (180° which dip consistently at 60° - 80° to the southeast, a southerly plunging shoots can be interpreted with degrees at 35° - 40°; This orientation is consistent with the high-grade plunges which can be interpreted within the drill holes.</p> <ul style="list-style-type: none"> • With additional drilling which intersected with the main objects, the largest lode of objects 4 was selected for the variogram analysis for the for the APG area. The analyses indicated that within the continuous along strike shear (180°) which dip consistently at 60° - 75° to the northwest, no major plunging shoots can be interpreted. • Surpac software was used for the estimations. • Top-cuts values range from 60g/t to 125 g/t were used for 9 objects in the AG area respectively and top-cuts of 16g/t was appropriate for 1 object in the APG area. These high-grade cuts were applied to the composites and were determined from the log histograms and log probability plots. RPM notes there were some extreme high-grade samples identified during the latest exploration stage however the high-grade domains were not extended. • No Top cuts were applied to the South Gamina composites. • A grade dependent search was applied to all samples above 35g/t for the estimation of Measured and Indicated resource parts. This was limited to a 25m-30m radius influence due to the extreme grades of these holes. And grade dependant search was not used for estimation of Inferred resource part. • The parent block dimensions used were 20m NS by 10m EW by 5m vertical with sub-cells of 1.25m by 1.25m by 0.625m for AG and SG, 25m NS by 10m EW by 5m vertical with sub-cells of 3.125m by 1.25m by 0.625m for AGP area based on QKNA analysis results and drilling spacing. No QKNA was undertaken on South Gamina due to the limited composites and assumed the AG results. Each block model was rotated to a bearing of 35 degrees to align with the general strike of the majority of the mineralised lenses, to improve the fit of the blocks to the wireframe and to reduce the size of the block model. • Historical production records were not available for small scale artisanal mining operations. • No assumptions have been made regarding recovery of by-products. • No estimation of deleterious elements was carried out. Only gold (Au) was interpolated into the block model.

Criteria	JORC Code explanation	Commentary
		<ul style="list-style-type: none"> • An orientated 'ellipsoid' search was used to select data and was based on parameters taken from the variography or the observed lode geometry. Four passes were used for each domain (pass 1-4 for Measured and Indicated resource and pass 3-4 for Inferred resource). The ranges for 4 passes are 30m, 50m, 80m and 160m. The minimum samples for 4 passes are 5, 5, 5 and 1. A maximum of 12 samples and maximum of 4 samples per hole were used for all 4 passes • For APG area, 3 passes were used for each domain. The ranges for 3 passes are 40m, 80m and 300m. The minimum samples for 3 passes are 5, 5, 1. A maximum of 12 samples and maximum of 4 samples per hole were used for all 4 passes. • Selective mining units were not modelled in the Mineral Resource model. The block size used in the model was based on drill sample spacing and lode orientation. • Only Au assay data was available, therefore correlation analysis was not possible. • The deposit mineralisation was constrained by wireframes constructed using a 0.25g/t Au cut-off grade in association with logged lithology codes. The wireframes were applied as hard boundaries in the estimate. • Statistical analysis was carried out on data from 233 lodes based on the orientation and shape of the mineralisation, which were further domained in the northern AG area and southern APG area. These 2 domains are likely separated by interpreted fault zones identified from geophysical surveys; however the style of mineralisation appears the same between domains although grade ranges vary. Similarly, South Gamina is a continuation of the shear from Ag to the north with likely faulting offsetting this shear. • A three step process was used to validate the model. A qualitative assessment was completed by slicing sections through the block model in positions coincident with drilling. A quantitative assessment of the estimate was completed by comparing the average Au grades of the composite file input against the Au block model output for all the resource objects. Validation of the model included detailed comparison of composite grades and block grades by northing and elevation. Validation plots showed good correlation between the composite grades and the block model grades. • While some smoothing is noted within the grade estimates, RPM considers this appropriate for the style of mineralisation which displays a relatively high nugget, with

Criteria	JORC Code explanation	Commentary
		<p>good geology continuity displayed. The validation indicated that the NN estimate showed reasonable variation on a global scale however this is considered to be not representative of the local variability with both the ID3 and OK displaying smoothing which is considered appropriate and suitable.</p> <ul style="list-style-type: none"> With additional infill drilling, RPM recommends that further high-grade domains be investigated along with the use of MIK or conditional simulation, which given the current drill spacing are not considered a suitable estimation methodology.
Moisture	<ul style="list-style-type: none"> Whether the tonnages are estimated on a dry basis or with natural moisture, and the method of determination of the moisture content. 	<ul style="list-style-type: none"> Tonnages and grades were estimated on a dry in situ basis. No moisture values were reviewed.
Cut-off parameters	<ul style="list-style-type: none"> The basis of the adopted cut-off grade(s) or quality parameters applied. 	<ul style="list-style-type: none"> AG Mineral Resource is reported at a cut of grade of 0.25 Au g/t within a pit shell within a gold price of 2,000 USD per troy ounce, and 1.1 Au g/t below. Within APG Mineral Resource is reported at a cut of grade of 0.3 Au g/t within a pit shell within a gold price of 2,000 USD per troy ounce, and 1.1 Au g/t below. The cut off grades were based on estimated mining and processing costs and recoveries factors on the previous PFS study and updated processing recovery costs. The pit shell was generated with both indicated and inferred resources using the following parameters are: <ul style="list-style-type: none"> Gold Price of USD 2,000 per ounce, RPM notes this is based on the eventual extraction sometime in the future and not the long-term consensus forecast. The cut off grades were estimated based on the gold price of 1,800 USD per troy ounce which is approximately 1.25 times the consensus forecast as of February. Mining Cost of USD 0.64 /tonnes rock Mining Ore Loss and Dilution of 5% and 15%. Processing costs of USD 7.5 per tonne milled. G and A USD 3.1 per tonnes ore USD 2 per tonne ore sustaining capital and; Processing recovery of 96%. RPM has utilised the operating costs and recoveries along with the price noted above in determining the appropriate cut-off grade. Given the above analysis RPM considers both the open pit and material below the pit demonstrates reasonable prospects for eventual economic extraction, however, highlights that additional studies and drilling is required to confirm economic viability. South Gamina Resource was reported to a depth of 120m and not reported below.

Criteria	JORC Code explanation	Commentary
Mining factors or assumptions	<ul style="list-style-type: none"> Assumptions made regarding possible mining methods, minimum mining dimensions and internal (or, if applicable, external) mining dilution. It is always necessary as part of the process of determining reasonable prospects for eventual economic extraction to consider potential mining methods, however the assumptions made regarding mining methods and parameters when estimating Mineral Resources may not always be rigorous. Where this is the case, this should be reported with an explanation of the basis of the mining assumptions made. 	<ul style="list-style-type: none"> RPM has assumed that the deposit could be mined using mostly open cut techniques with some possibility of underground mining.
Metallurgical factors or assumptions	<ul style="list-style-type: none"> The basis for assumptions or predictions regarding metallurgical amenability. It is always necessary as part of the process of determining reasonable prospects for eventual economic extraction to consider potential metallurgical methods, however the assumptions regarding metallurgical treatment processes and parameters made when reporting Mineral Resources may not always be rigorous. Where this is the case, this should be reported with an explanation of the basis of the metallurgical assumptions made. 	<ul style="list-style-type: none"> Feasibility study metallurgical testing has been conducted on the AG and APG Project. The flowsheet will use gravity separation of Au followed by leaching to produce a concentrate with expected recoveries greater than 96% for Au based on these results.
Environmental factors or assumptions	<ul style="list-style-type: none"> Assumptions made regarding possible waste and process residue disposal options. It is always necessary as part of the process of determining reasonable prospects for eventual economic extraction to consider the potential environmental impacts of the mining and processing operation. While at this stage the determination of potential environmental impacts, particularly for a greenfields project, may not always be well advanced, the status of early consideration of these potential environmental impacts should be reported. Where these aspects have not been considered this should be reported with an explanation of the environmental assumptions made. 	<ul style="list-style-type: none"> No assumptions have been made regarding environmental factors however the project is under construction with all permits in place. As part of this estimate, RPM has not completed a detailed environmental review however is aware a study has been completed and environmental licence granted. RPM has not been informed nor is aware of any issues with the licence and understands that the licence in which Exploration results and Mineral Resources are reported are in good standing.
Bulk density	<ul style="list-style-type: none"> Whether assumed or determined. If assumed, the basis for the assumptions. If determined, the method used, whether wet or dry, the frequency of the measurements, the nature, size and representativeness of the samples. The bulk density for bulk material must have been measured by methods that adequately account for void spaces (vugs, porosity, etc), moisture and differences between rock and alteration zones within the deposit. Discuss assumptions for bulk density estimates used in the evaluation process of the different materials. 	<ul style="list-style-type: none"> RPM is aware a total of 1,860 bulk density samples were carried out on the diamond core from numerous holes with 1,502 samples from the AG area and 358 samples from AGP area (no samples were undertaken on South Gamina). While there is adequate data from oxidised, transition, experimental for all AG domain and Fresh domain of APG area, average density values were calculated and assigned as block density for each area respectively. Considering that there are limited data for Oxidation and Transition domains of APG area, the average density values from AG area were used for the assignment. As SG areas is

Criteria	JORC Code explanation	Commentary
Classification	<ul style="list-style-type: none"> <i>The basis for the classification of the Mineral Resources into varying confidence categories.</i> <i>Whether appropriate account has been taken of all relevant factors (i.e. relative confidence in tonnage/grade estimations, reliability of input data, confidence in continuity of geology and metal values, quality, quantity and distribution of the data).</i> <i>Whether the result appropriately reflects the Competent Person's view of the deposit.</i> 	<p>extend areas of AG area, same density values from AG were applied for SG.</p> <ul style="list-style-type: none"> Mineral Resources were classified in accordance with the Australasian Code for the Reporting of Exploration Results, Mineral Resources and Ore Reserves (JORC, 2012). The Mineral Resource was classified as Measured, Indicated and Inferred Mineral Resource on the basis of data quality, sample spacing, and lode continuity. The AG and APG deposits both show good continuity of the main mineralised lodes along strike and down dip which allowed the drill hole intersections to be modelled into coherent, geologically robust wireframes within the drill spacing of 50m-100m by 50m with closer spacing of 25m-50m by 25m-50m within the core of the AG deposit. Relative consistency is evident in the thickness of the structures, along with the continuity of structure between sections. While there is good geological continuity along strike and down dip, there is evidence, and it is interpreted, that local variation of grade and thickness will occur between the current drill spacing arising from the boudin type structures resulting in discontinuous pods of mineralisation. Given the interpretation of further local grade variation with further drilling, within the good geological continuity, RPM considers the current data suitable to provide a good estimate of tonnage and metal content within the current drilling spacing on a global scale. For AG and APG areas, RPM considers the 2020-2022 infill and extension drilling undertaken allows good confidence in the grade and geological continuity with the 25m-50m and closer spacing allowing interpretation between section and down dip. As such RPM considers that 25m by 25m (40% of the sill) spacing suitable for the Measured classification in central area of AG, 50m by 50m spacing suitable for the indicated classification in central and north area of AG and local areas of APG which were selected based on variogram ranges (60% of the sill range) and visual confirmation of structure and grade continuity. RPM however considers that further drilling is required to allow a confirmed estimate of local grade and metal distribution as such proportion of measured resource reported is still low. All other areas are reported the Mineral Resource as Inferred within the 100m by 50m drilling spacing areas and extrapolated to 30 – 50 m from the nearest drill hole. Limited, but what is considered representative bulk density samples have

Criteria	JORC Code explanation	Commentary
		<p>been determined for the transition and oxide domains. While RPM considers the applied densities suitable for the style of mineralisation and rock types, further determinations are recommended to enable high confidence prior to mining. RPM highlights that the oxide and transition material constitute a very minimal portion of the indicated estimate (1% of tonnes and 5% of metal content) at AG as such does not have a material impact on either the local or global estimates.</p> <ul style="list-style-type: none"> All South Gamina was classified as inferred due to the larger drill spacing. All South Gamina was classified as inferred due to the larger drill spacing.
Audits or reviews	<ul style="list-style-type: none"> <i>The results of any audits or reviews of Mineral Resource estimates.</i> 	<ul style="list-style-type: none"> Internal audits have been completed by RPM which verified the technical inputs, methodology, parameters, and results of the estimate.
Discussion of relative accuracy/confidence	<ul style="list-style-type: none"> <i>Where appropriate a statement of the relative accuracy and confidence level in the Mineral Resource estimate using an approach or procedure deemed appropriate by the Competent Person. For example, the application of statistical or geostatistical procedures to quantify the relative accuracy of the resource within stated confidence limits, or, if such an approach is not deemed appropriate, a qualitative discussion of the factors that could affect the relative accuracy and confidence of the estimate.</i> <i>The statement should specify whether it relates to global or local estimates, and, if local, state the relevant tonnages, which should be relevant to technical and economic evaluation. Documentation should include assumptions made and the procedures used.</i> <i>These statements of relative accuracy and confidence of the estimate should be compared with production data, where available.</i> 	<ul style="list-style-type: none"> The Mineral Resource estimate has been reported with a high degree of confidence. The lode geometry and continuity has been interpreted to reflect the Mineral Resource classification. The data quality is good and the drill holes have detailed logs produced by qualified geologists. Internationally Recognised and Accredited laboratories have been used for all analyses. The Mineral Resource statement relates to global estimates of tonnes and grade. This is an update to the existing Mineral Resource and no recorded mining activities have been undertaken therefore reconciliation could not be conducted.