



AUSTRALIAN LITHIUM FOR A CLEAN ENERGY FUTURE

# Investor Presentation

APRIL 2022

ASX | LPM



# Important INFORMATION

## Forward Looking Statements

Certain statements contained in this presentation, including information as to the future financial or operating performance of Lithium Plus Minerals Ltd (“Lithium Plus”) and its projects, are forward looking statements. Such forward looking statements:

- include, among other things, statements regarding incomplete and uncertain proposals or targets, production and prices, operating costs and results, capital expenditures, and are or may be based on assumptions and estimates related to future technical, economic, market, political, social and other conditions;
- are necessarily based upon several estimates and assumptions that, while considered reasonable by Lithium Plus, are inherently subject to significant technical, business, economic, competitive, political and social uncertainties and contingencies; and
- involve known and unknown risks and uncertainties that could cause actual events or results to differ materially from estimated or anticipated events or results reflected in such forward-looking statements.

Lithium Plus disclaims any intent or obligation to update publicly any forward-looking statements, whether as a result of new information, future events or results or otherwise. The words “believe”, “expect”, “anticipate”, “indicate”, “contemplate”, “target”, “plan”, “intends”, “continue”, “budget”, “estimate”, “may”, “will”, “schedule” and similar expressions identify forward looking statements. All forward looking statements made in this presentation are qualified by the foregoing cautionary statements. Recipients are cautioned that forward looking statements are not guarantees of future performance and accordingly investors are cautioned not to put undue reliance on forward looking statements due to the inherent uncertainty therein.

## Disclaimer

No representation or warranty, express or implied, is made as to the fairness, accuracy, completeness or correctness of the information, opinions and conclusions contained in this presentation. To the maximum extent permitted by law, none of Lithium Plus, its directors, employees or agents, nor any other person accepts any liability, including, without limitation, any liability arising out of fault of negligence, for any loss arising from the use of the information contained in this presentation. In particular, no representation or warranty, express or implied is given as to the accuracy, completeness or correctness, likelihood of achievement or reasonableness or any forecasts, prospects or returns contained in this presentation nor is any obligation assumed to update such information. Such forecasts, prospects or returns are by their nature subject to significant uncertainties and contingencies.

The information contained in this presentation is for informational purposes only and does not constitute an offer to issue, or arrange to issue, securities or other financial products. The information contained in this presentation is not investment or financial product advice and is not intended to be used as the basis for making an investment decision. The presentation has been prepared without considering the investment objectives, financial situation or needs of any particular person. Before making an investment decision, you should consider, with or without the assistance of a financial adviser, whether an investment is appropriate considering your particular investment needs, objectives and financial circumstances. Past performance is no guarantee of future performance.

## Competent Persons Statement

The information in this report that relates to Exploration Results, Mineral Resources or Reserves is based on information compiled by Dr. Jason Berton, who is a member of the Australian Institute of Mining and Metallurgy. Dr. Berton has sufficient mineral exploration experience which is relevant to the style of mineralisation and type of deposit under consideration and to the activity he is undertaking to qualify as a competent person as defined in the 2012 Edition of the “Australasian Code for reporting of Exploration Results, Mineral Resources and Ore Reserves” (JORC Code). Dr. Berton consents to the inclusion in this report of the matters and information discussed, based upon the form and context in which it appears.

## Exploration by Other Explorers

This presentation contains information sourced from the reports of Other Explorers. References to the original reports are provided as footnotes where the information is cited in this presentation. Lithium Plus does not vouch for the accuracy of these reports. Lithium Plus has taken the decision to include this information as it is in the public domain and as we assess it to be of relevance to shareholders and investors.

# Lithium PLUS

## HIGH IMPACT LITHIUM EXPLORATION

Focused on five projects within two highly prospective areas



## + Bynoe PROJECT AREA

**BYNOE** | Flagship project, neighbouring Core Lithium's Finnis Project

**WINGATE** | Known pegmatite district, limited historic exploration

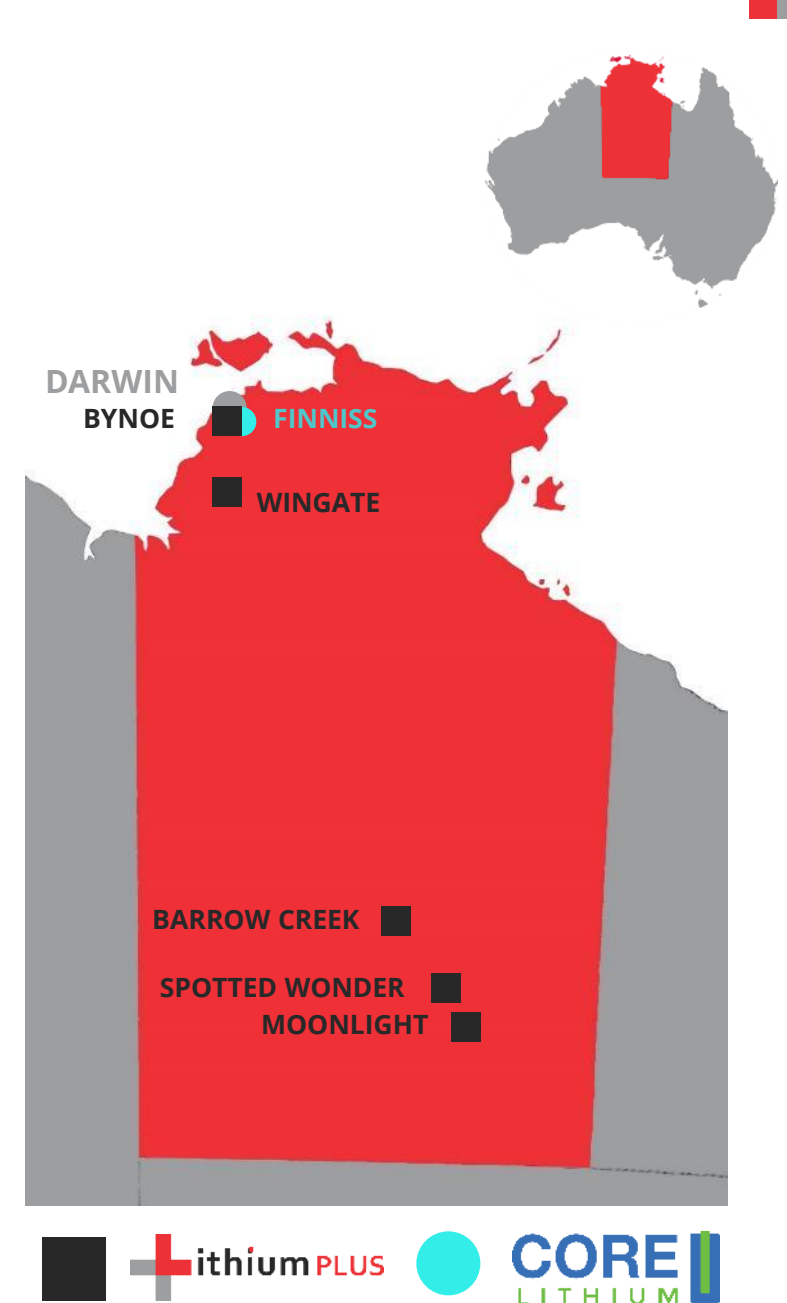


## + Arunta PROJECT AREA

**BARROW CREEK** | Historic tin and tantalum production

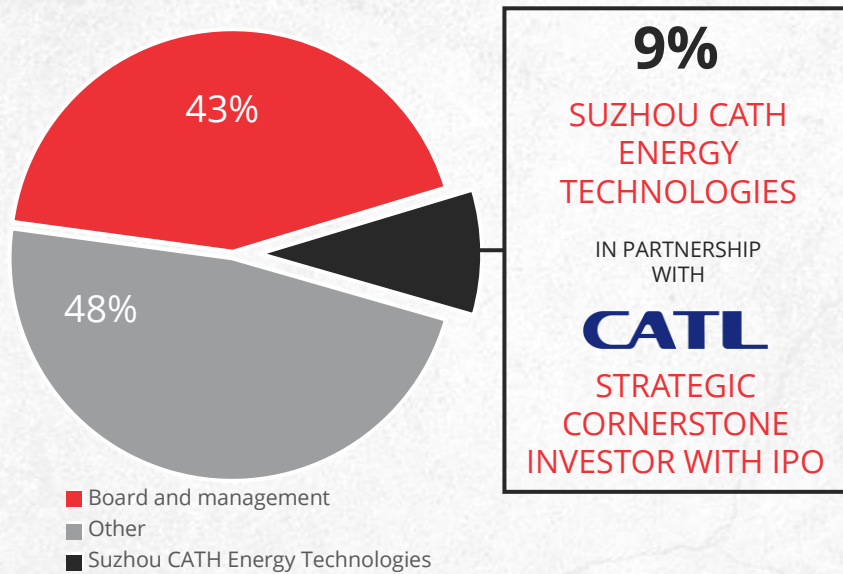
**SPOTTED WONDER** | Proven lithium mineralisation

**MOONLIGHT** | Within the Harts Range Pegmatite Field



# Corporate **SNAPSHOT**

## Register composition



## Capital structure | ASX:LPM

Initial public offer price per share	A\$0.25
Gross proceeds of initial public offer	A\$10.00M
Total number of shares at listing	97.00M
Market capitalisation at listing	A\$24.25M
Net cash	A\$10.34M
Implied enterprise value at listing	A\$13.91M



# Investment HIGHLIGHTS

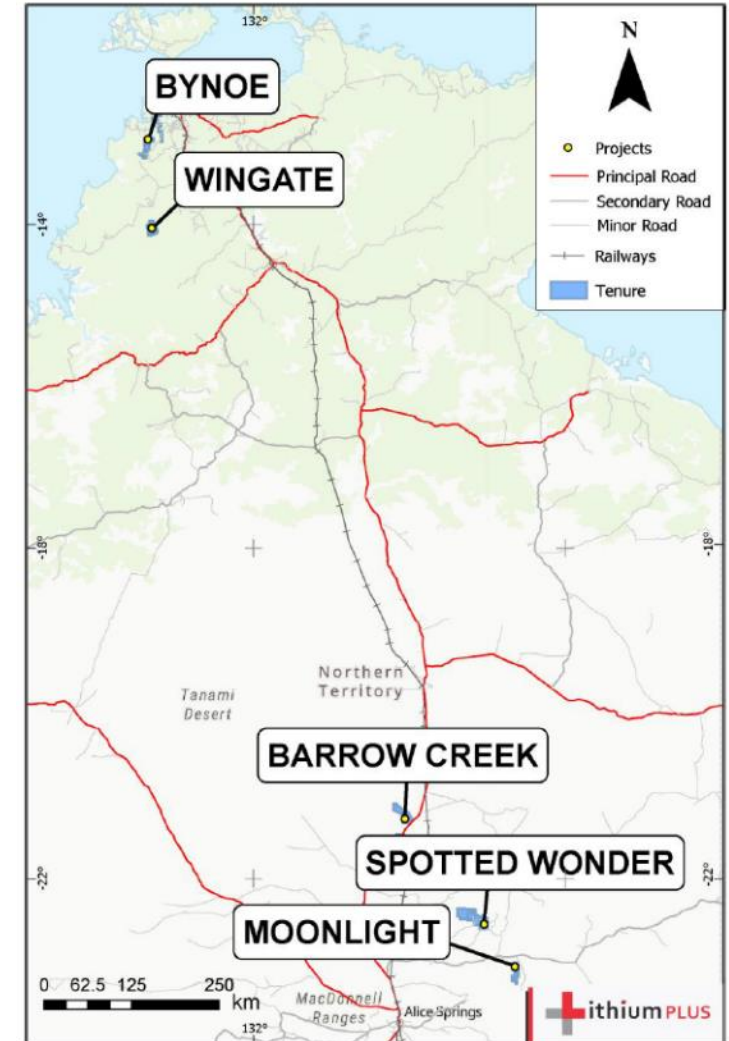
- 1 Premier project location  
+ NEXT TO CORE LITHIUM'S FINNISS MINE DEVELOPMENT AND 45KM FROM DARWIN
- 2 Outstanding geological prospectivity  
+ DISCOVERY HOLE CONFIRMS HIGH GRADE  $\text{Li}_2\text{O}$  | 12M @ 1.43%  $\text{Li}_2\text{O}$  FROM 121M
- 3 Aggressive drilling program  
+ TARGETING DEFINITION OF A SUBSTANTIAL MAIDEN RESOURCE BY Q1 2023
- 4 Strategic cornerstone investment  
+ FROM LEADING GLOBAL BATTERY DEVELOPER AND MANUFACTURER
- 5 Proven board and management  
+ WITH A STRONG FOCUS ON EXPLORATION AND RESOURCE DEVELOPMENT
- 6 Direct leverage to the battery transition  
+ SET TO CAPITALISE ON A STRUCTURAL LITHIUM SUPPLY SHORTAGE



# 1. Premier project LOCATION

NEXT TO CORE'S FINNISS MINE DEVELOPMENT AND 45KM FROM DARWIN

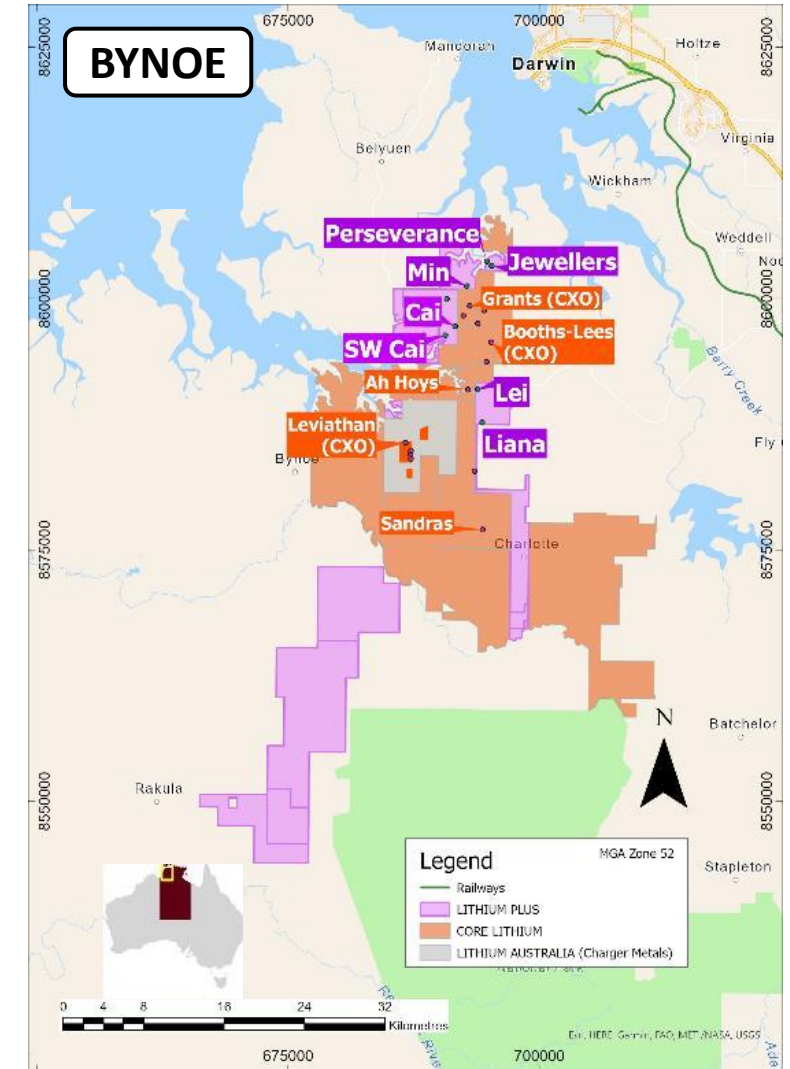
- **Australia is a prolific mining nation**, built on a history of safe, stable mineral extraction
- **Strategically positioned 45km from Darwin Port** being Australia's nearest port to Asia and gateway for Australasian trade
- Flagship Bynoe Project is **adjacent to Core Lithium's Finnis mine development** (current Mineral Resources of 14.7Mt @ 1.32% Li<sub>2</sub>O) and **45km south of Darwin**, benefiting from:
  - a **similar geological setting to Finnis**, with a number of prospects directly along strike from Core's BP33 deposit; and
  - **proximity to infrastructure**, labour and supply routes



# 2. Outstanding geological PROSPECTIVITY

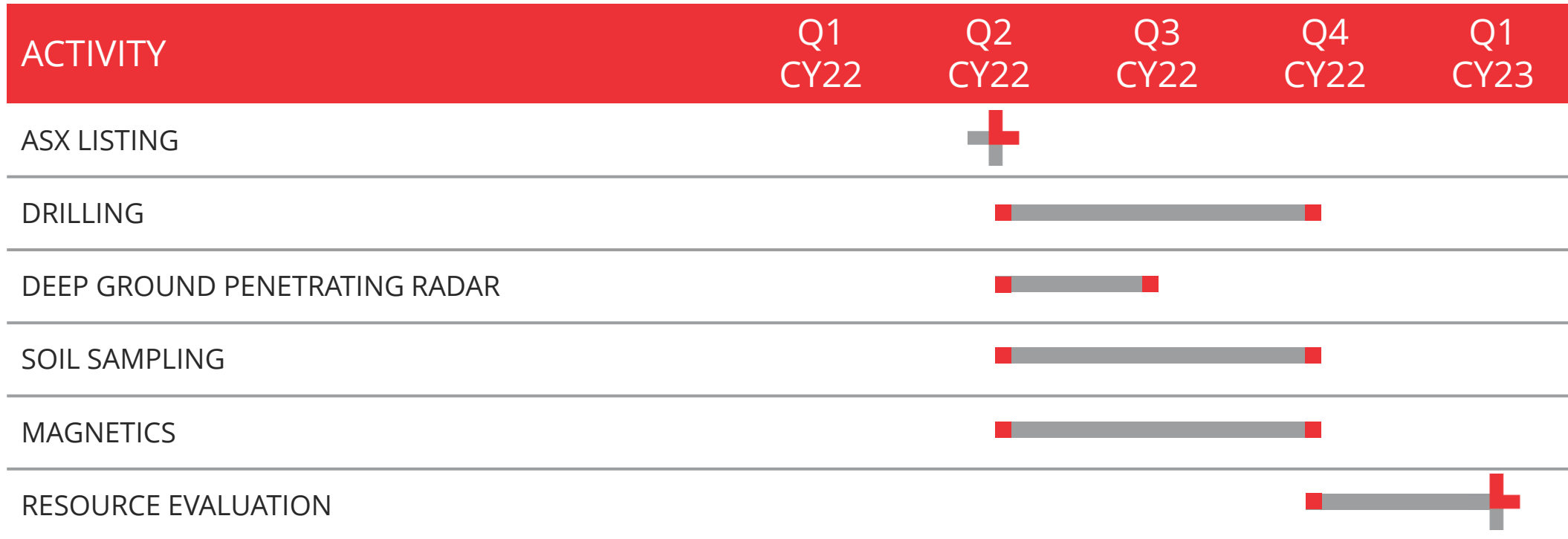
HIGH GRADE DISCOVERY HOLE | 12m @ 1.43%  $\text{Li}_2\text{O}$  FROM 121m

- **Two project areas, containing 19 granted exploration licences** (and additional 3 exploration licences under application), across more than 1,690km<sup>2</sup> of tenure
- Flagship Bynoe Project returned **12m @ 1.42%  $\text{Li}_2\text{O}$  from 121m** (Lei Prospect, drilled 2017) confirming high grade spodumene-bearing pegmatite
- Lei Prospect is located 2km south of **Core's BP 33 deposit** which has a **Mineral Resource of 3.24 Mt @ 1.51%  $\text{Li}_2\text{O}$**
- Very small proportion of tenement area field sampled providing **significant opportunity** for follow up soil sampling and potential **lithium bearing pegmatite discoveries**
- **Multiple walk up, drill ready targets** identified and incorporated into an aggressive drilling program



# 3. Aggressive DRILLING PROGRAM

SUBSTANTIAL PLANNED PROGRAM OF EXPLORATION WORKS



 Targeting | DEFINITION OF A MINERAL RESOURCE ESTIMATE BY Q1 23<sup>1</sup>

Note 1: Target timeframes are subject to change and may be impacted by Covid or other unforeseen circumstances



# 4. Strategic CORNERSTONE INVESTMENT

## FROM LEADING BATTERY DEVELOPER AND MANUFACTURER

- Suzhou CATH Energy Technologies (**CATH**) invested at IPO with a **9% equity interest**
- CATH is jointly owned by **Contemporary Amperex Technology Co. Ltd (CATL)** and **Mr Pei Zhenhua**
- CATL is the **world's largest electric vehicle (EV) battery manufacturer**
- Mr Pei is a significant investor in Yibin Tianyi Lithium Industry – **one of China's largest lithium converters**

# CATL

A global leader of new energy innovative technologies, committed to providing premier solutions and services for new energy applications worldwide

TOP  
**EV BATTERY  
MANUFACTURER**  
GLOBALLY<sup>1</sup>

HOLDS 32.5% OF A  
**US\$27 BILLION**  
BATTERY MARKET<sup>1</sup>

GLOBALLY  
**2.35 MILLION**  
EVs IN OPERATION  
WITH CATL BATTERIES

**LITHIUM ION  
BATTERY  
SPECIALISTS**

Note 1: By consumption volume. Adapted from data from SNE Research

# 5. Proven board and MANAGEMENT

WITH A STRONG FOCUS ON EXPLORATION AND RESOURCE DEFINITION



**Dr Bin Guo**

**EXECUTIVE CHAIRMAN**

- Founder and Executive Chairman of Lithium Plus
- PhD in Geophysics with more than 20 years experience in mining and finance
- Wide range of technical and commercial knowledge gained at SRK Consulting, CITIC Securities and Mining One Consultants
- Previously Non-Executive Director of North American Lithium and member of AusIMM, AIG and ASEG



**Mr Simon Kidston**

**NON EXECUTIVE DIRECTOR**

- Finance professional with more than 25 years global experience with Macquarie Bank, HSBC and Helmsec Global Capital Limited
- Founding Director of renewable energy company Genex Power
- Previously involved in the establishment of ASX listed mining companies, Endocoal Ltd, Carabella Resources Ltd and Estrella Resources Ltd
- Current Non-Executive Director of Genex Power Ltd and QC Copper and Gold



**Dr Jason Berton**

**NON EXECUTIVE DIRECTOR**

- Structural geologist with over 20 years mining and exploration experience at Homestake, Barrick, BHP and SRK Consulting
- Former Managing Director of ASX-listed Estrella Resources and current Executive Director for PolarX Limited
- PhD in Geology and member of AusIMM



**Mr George Su**

**NON-EXECUTIVE DIRECTOR**

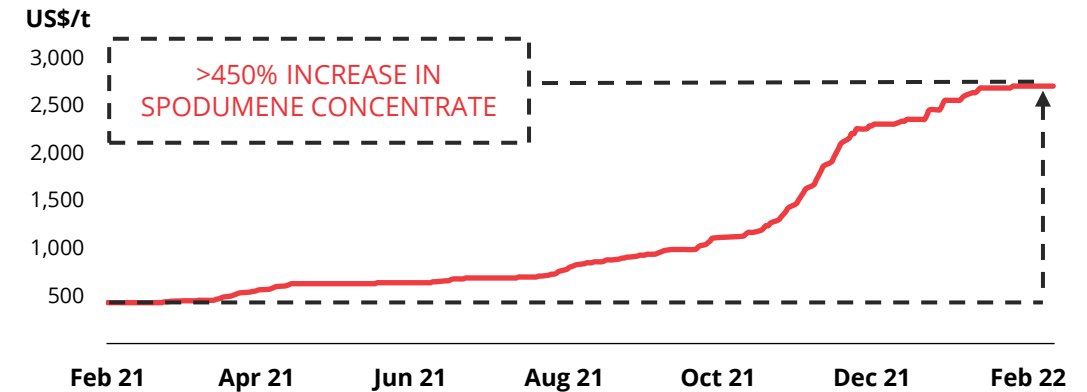
- Over 35 years' business experience in the Asia-Pacific region
- Current CEO and Managing Director of Richlink Australia
- Former country head of Australian operations at CITIC Securities and independent director of Macquarie Bank's China property fund
- Current Independent Director of YPB Group Ltd, an ASX listed technology company

# 6. Direct leverage to **BATTERY TRANSITION**

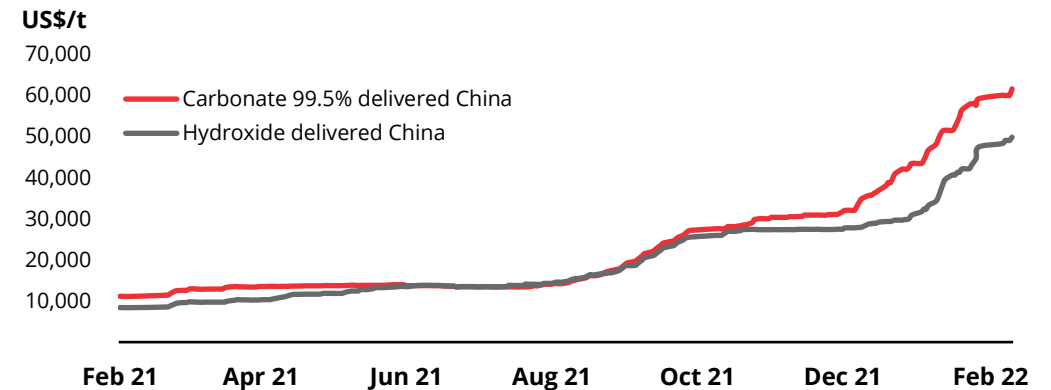
## SET TO CAPITALISE ON A STRUCTURAL LITHIUM SUPPLY SHORTAGE

- Lithium is an **essential battery cathode material**.
- **Lithium-rich spodumene concentrate** is a feedstock material used in the production of lithium chemicals that go into **batteries for Electric Vehicles (EVs)**.
- **Supply** of spodumene concentrate is **structurally constrained** – strong incentive prices required to bring additional projects to production.
- Lithium **spodumene concentrate prices** have **increased** by more than **450%** to US\$2,400t in January 2022.
- Lithium Plus is ideally placed to take advantage of **strong long term market fundamentals for spodumene concentrate**.

Spodumene concentrate price



Carbonate and hydroxide price



Sources: [www.afr.com/companies/mining/lithium-price-rockets-45pc-with-no-end-in-sight-20220204-p59trs](https://www.afr.com/companies/mining/lithium-price-rockets-45pc-with-no-end-in-sight-20220204-p59trs) referencing Benchmark Mineral intelligence.

Source: Asian Metals



# Project area detail

BYNOE  
AND ARUNTA

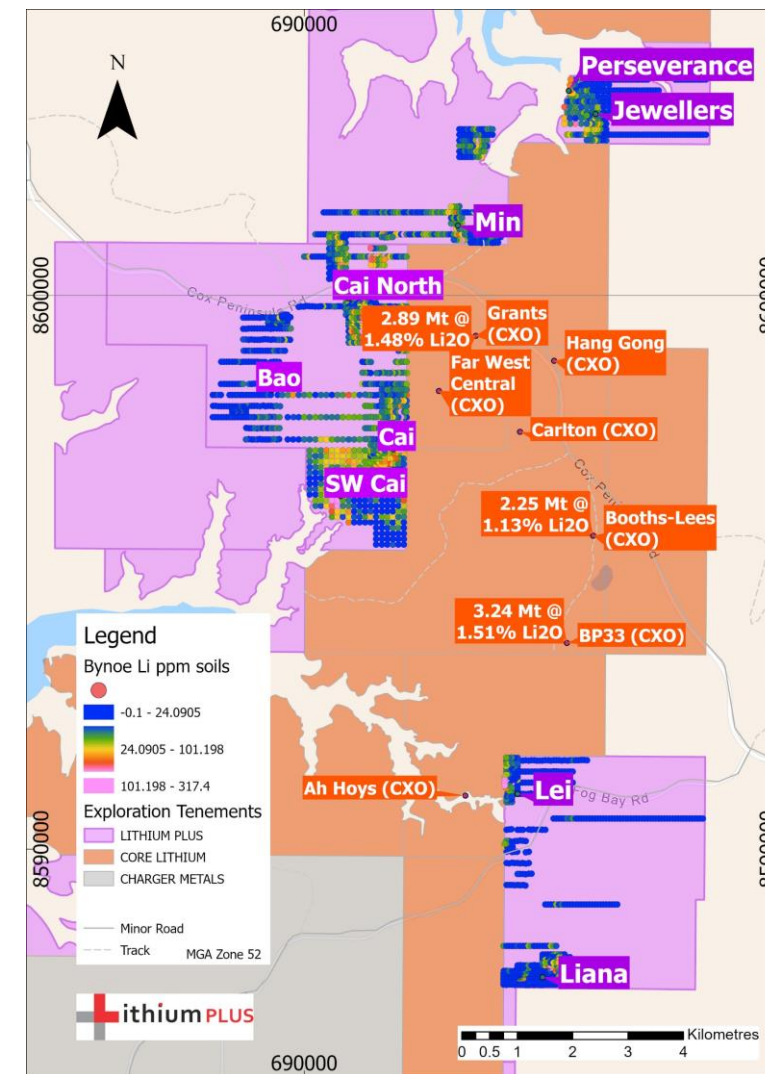




# Bynoe PROJECT

## NEIGHBOURING CORE LITHIUM'S FINNISS MINE DEVELOPMENT

- Situated on the Cox Peninsula, **45 km south of Darwin**, on the northern end of the Litchfield Pegmatite Belt
- Lithium Plus has **11 granted tenements covering 297 km<sup>2</sup>**
- Geologically centred around the Bynoe Pegmatite Field
- Tenements **share a border with Core Lithium's** Finniss mine development
- **Significant lithium mineralisation** was discovered at Lei in 2017 within the north-northeast trending spodumene bearing pegmatites
- **Current drill ready targets** are Lei, SW Cai, Cai and Perseverance prospects





# Bynoe PROJECT

## NEIGHBOURING CORE LITHIUM'S MINE DEVELOPMENT

- Analysis of limited **historic soil sampling returned strong lithium anomalies**
- **Six individual prospects** identified
- Weathered LCT (Lithium-Caesium-Tantalum) pegmatites identified at surface at Cai, Perseverance, Jewellers and Bao

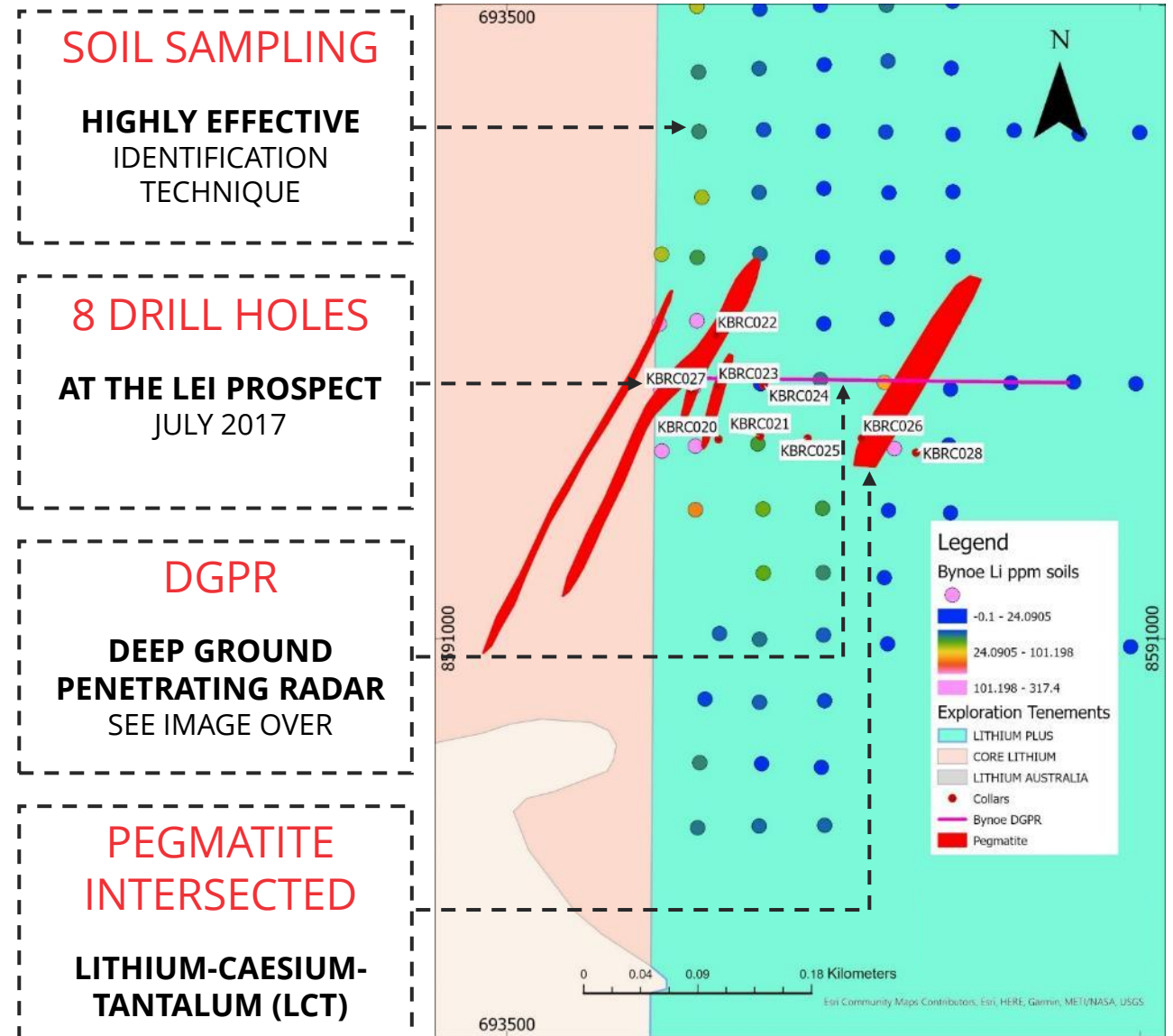
**DRILL READY TARGETS IDENTIFIED AT  
LEI, SW CAI, CAI AND  
PERSEVERANCE**

**ADDITIONAL ANOMALIES TO BE ANALYSED IN DETAIL**

PROSPECT	OUTCROP	SOILS	DGPR	MAG	DRILLING
Lei & Lianna		✓	✓	✓	✓
SW Cai		✓	✓	✓	
Cai	✓	✓	✓	✓	✓
Perseverance	✓	✓		✓	
Jewellers	✓	✓		✓	

# Bynoe **PROJECT** LEI PROSPECT DETAIL

- **Key immediate exploration focus**
- Maiden 8-hole drill program undertaken in 2017, of which 7 were too shallow to intersect pegmatite subsequently identified by DGPR
- Located 2km south of and **contiguous with Core's BP 33 tenure (Inferred Mineral Resource of 3.24Mt @ 1.51% Li<sub>2</sub>O)**
- Multiple lithium bearing **pegmatite targets identified using soil sampling** - a highly effective lithium identification technique, particularly where limited outcropping and pegmatite weathering is extensive



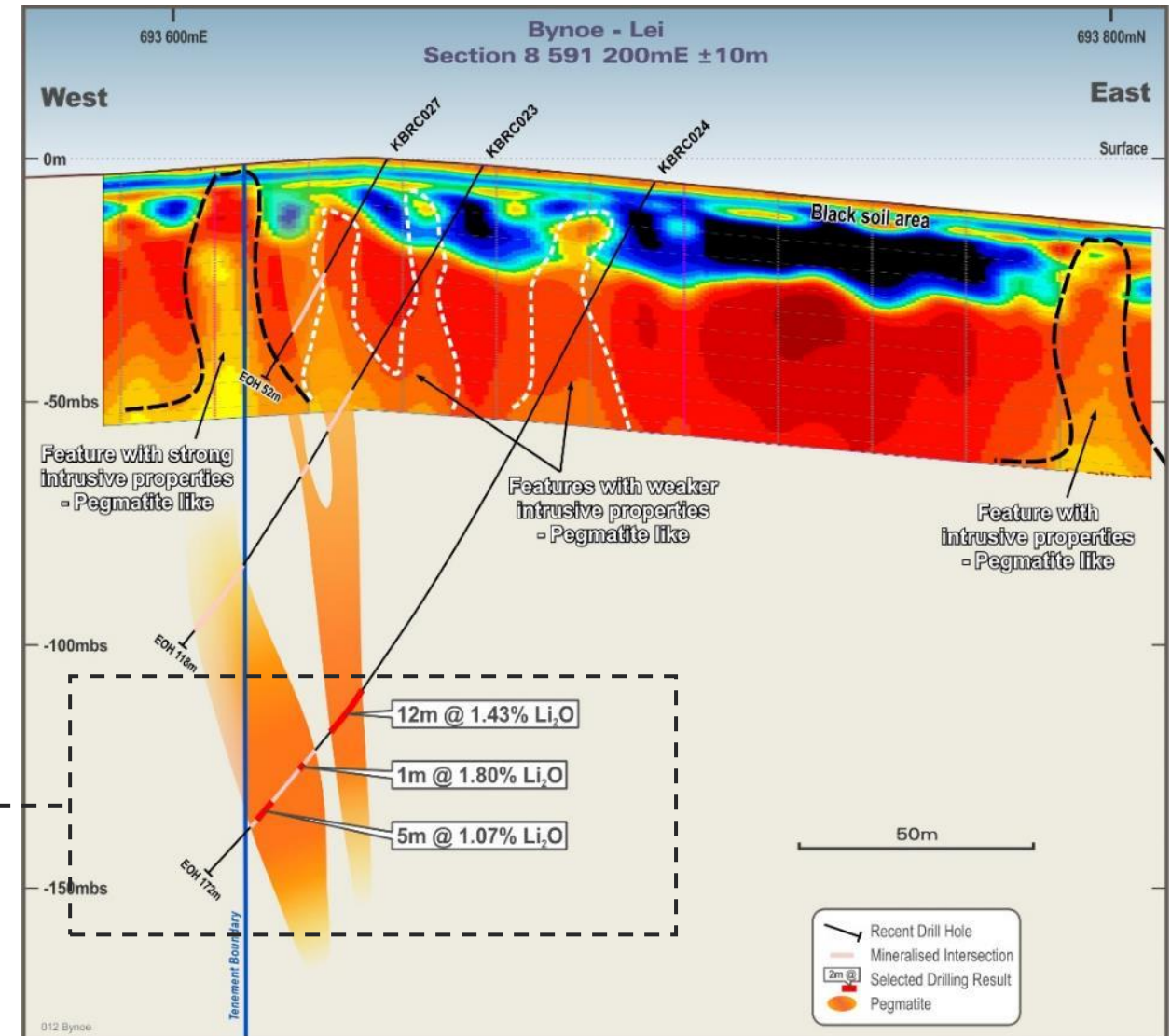
# Bynoe PROJECT

## LEI PROSPECT DETAIL

**SIGNIFICANT LITHIUM MINERALISATION  
DISCOVERED AT LEI PROSPECT IN 2017**

**12M @ 1.43%  $\text{Li}_2\text{O}$  FROM 121M**  
INCLUDING 9M @ 1.69%  $\text{Li}_2\text{O}$

- Historic drilling confirmed **high lithium grades in fresh pegmatite** with multiple positive intercepts
- Other **historic drill holes too shallow to test lithium mineralisation** in fresh pegmatite
- DGPR indicates multiple prospective pegmatite dykes **ready for drill testing**





# Bynoe PROJECT

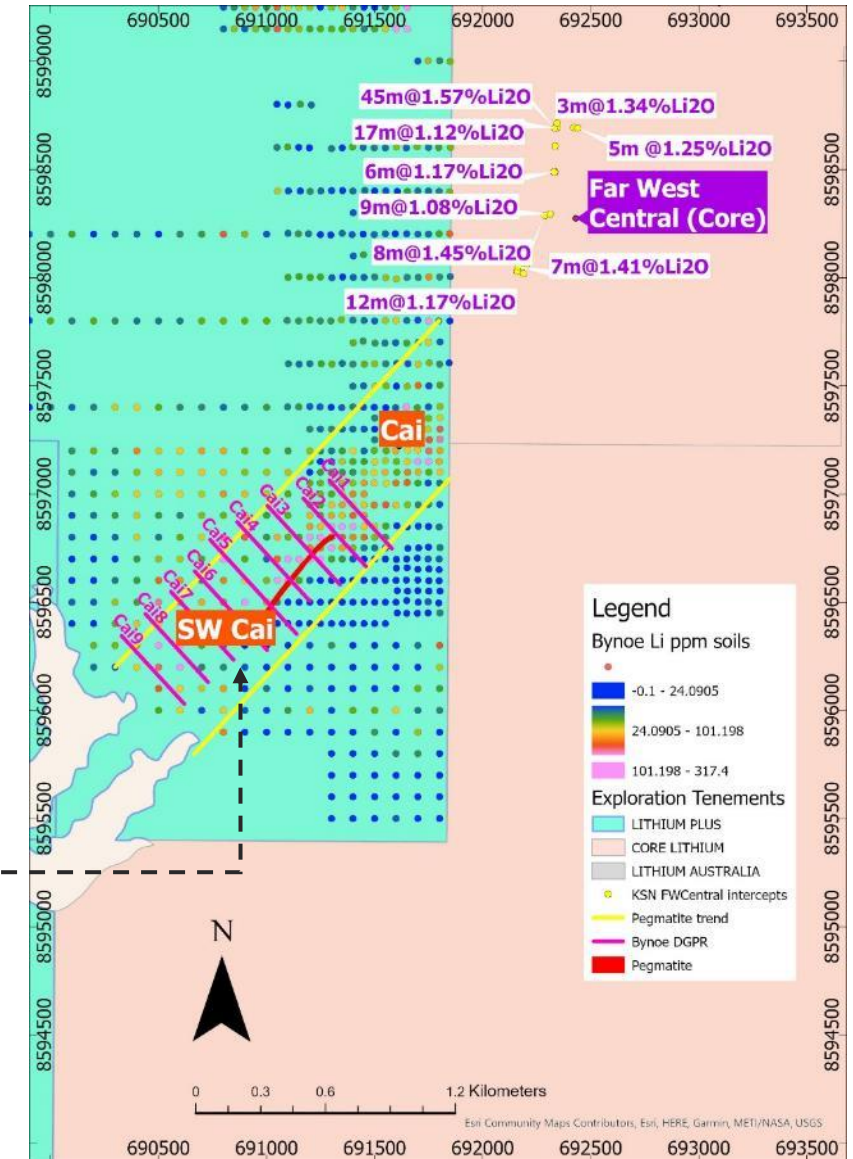
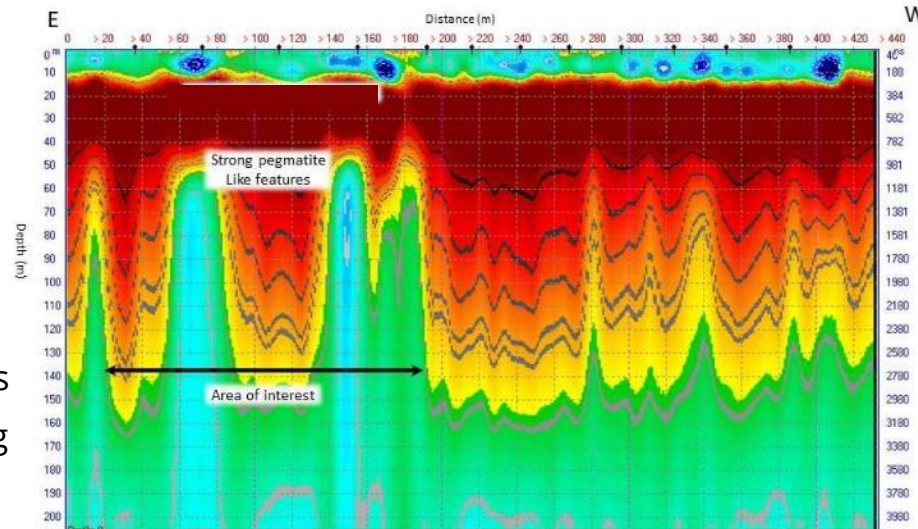
## SW CAI PROSPECT DETAIL

- **Mapped pegmatite** across historical mine workings have **500m strike length**
- DGPR surveys were performed at SW Cai in 2017 along soil anomaly trend
- An **additional 500m trend length is estimated** from DGPR and soil samples
- All DGPR sections **indicate significant weathering**
- Future drill programs planned to **target pegmatite intersection at 100m** to test fresh rock

### DGPR LINE CAI 7

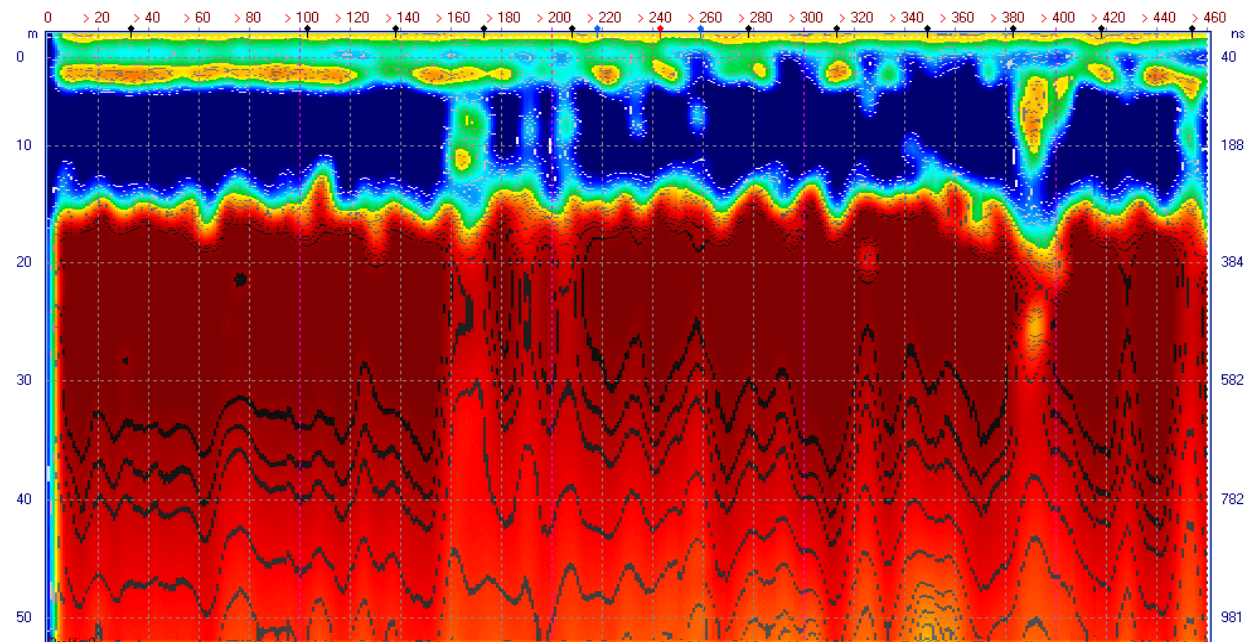
#### SIMILAR VERTICAL TRENDING ANOMALIES TO LEI

- 200m depth profile
- Signature suggests multiple pegmatite dykes
- Coincident with overlying soil anomaly



# Bynoe **PROJECT** PERSEVERANCE & JEWELLERS

- Prospects located in northern Bynoe
- **Multiple lithium bearing pegmatite drill targets identified**
- Surface mapping has identified **several weathered pegmatites**:
  - 500 m long at Jewellers
  - >100 m long at Perseverance
- **Lithium soil anomalies** coincident with the mapped pegmatites
- DGPR surveys confirm **pegmatite drill targets continue at depth**

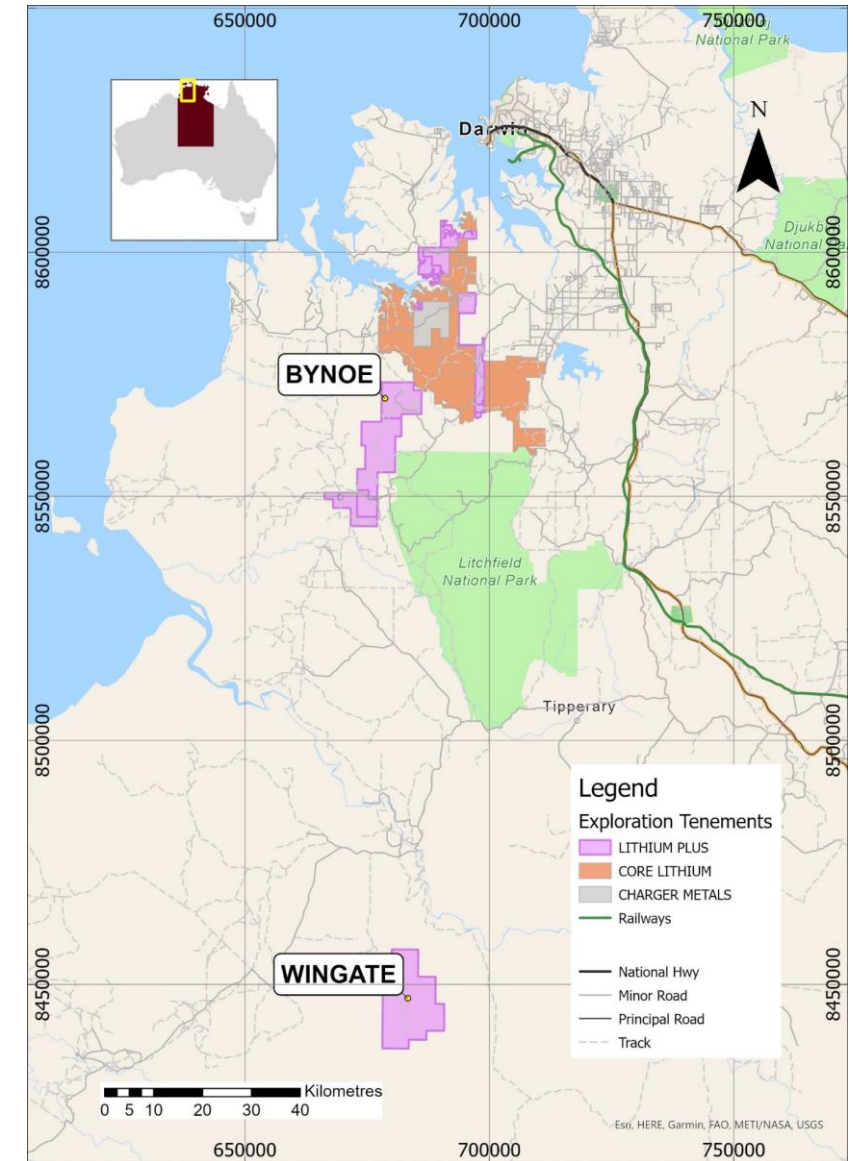




# Wingate PROJECT

## WINGATE MOUNTAINS PEGMATITE DISTRICT

- Located **150km south of Darwin**
- A single tenement (EL31132) covers the Wingate Mountains Pegmatite District, the southern part of the Litchfield Pegmatite Belt
- **Known presence of pegmatites** with little exploration and minor historical production of tin
- Historical gold workings (Fletcher's Gully) present and high grades known
- **Fieldwork planned for H2 CY22**



# Arunta **LITHIUM PROJECTS**

## THREE HIGHLY PROSPECTIVE PROJECTS

### **BARROW CREEK** | Historic tin and tantalum production

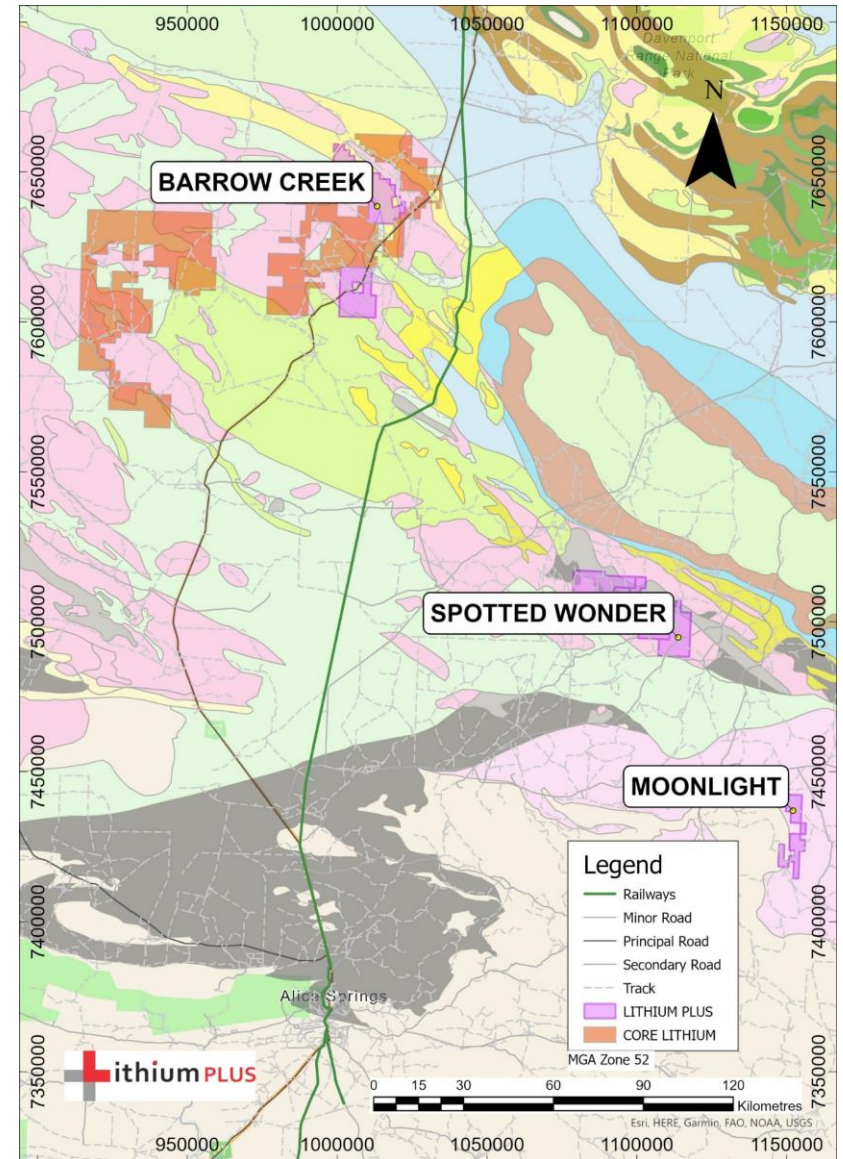
- Located in the Northern Arunta pegmatite province, 300km north of Alice Springs
- Historic tin and tantalum production and the presence of spodumene in nearby Anningie Pegmatite field suggest lithium potential

### **SPOTTED WONDER** | Proven lithium mineralisation

- Located approx. 200km north-north-east of Alice Springs
- Proven lithium mineralisation, with amblygonite present in the Delmore Pegmatite

### **MOONLIGHT** | Within the Harts Range Pegmatite Field

- Located within the Harts Range Pegmatite Field, approx. 200km north-east of Alice Springs
- Presence of pegmatites containing elbaite, indicative of lithium enrichment





# Arunta LITHIUM PROJECTS

## PLANNED FIELDWORK PROGRAM

- All projects within Arunta contain, or are expected to **contain lithium bearing pegmatites**
- Limited exploration history – **high prospectivity**
- Previous soil, rock chip and RAB sampling contributed to the **discovery of geochemical trends**
- Exploration strategy developed to **test local geology modelling**



# Contact DETAILS

## Registered Address

Level 6, 22 Pitt Street

Sydney NSW 2000

📞 +61 2 8029 0666

✉️ [info@lithiumplus.com.au](mailto:info@lithiumplus.com.au)

## Share registry

**AUTOMIC PTY LTD**

Level 2, 267 St Georges Terrace

Perth WA 6000

📞 1300 288 664 (within Australia)

📞 +61 2 9698 5414 (international)

✉️ [hello@automic.com.au](mailto:hello@automic.com.au)



