

COMPLETION OF ACQUISITION OF KEY MT IDA TENEMENT

Javelin Minerals Limited (**ASX: JAV**) ("**Javelin**" or "**the Company**") is pleased to advise that following finalisation of all the conditions precedent including shareholder approval granted on 26 April 2022, the acquisition of E 29/1095 has now been completed.

The consideration for the acquisition was the payment of \$25,000 in cash and the issue of 20,000,000 fully paid ordinary shares.

The tenement is located approximately 80km west of Leonora (Figure 1) and provides the Company with further exploration targets within archaean mafic to ultramafic lithologies bounded by granitic and pegmatitic intrusions. The mafics consist of coarse grained gabbros, amphibolites and komatiitic meta-basalts while the ultramafics comprise mainly tremolite-calcite schists. The granitic intrusions appear to be very coarse crystalline granites accompanied with numerous associated coarse pegmatites.

Exploration for potential lithium deposits in the region has recently resulted in Red Dirt Metals Limited (ASX:RDT) identifying discrete lithium minerals within previously untested coarse-grained pegmatites to the south-west of the Company's tenements including E 29/ 1095 (Figure 1). Javelin intends to incorporate the available radiometrics and aeromagnetic information from E 29/1095 into its recent low-level radiometric and aeromagnetic survey with a view to identifying outcropping and sub-cropping pegmatitic intrusions.

In addition, known gold mineralisation occurs some 2km west of E 29/1095 and appears to be related to the Zuleika Shear, a major structural feature whose northern extension has been interpreted to pass through the Company's E 29/1135, E 29/1137, E 29/1024 and E 36/1019.

A ground reconnaissance and sampling program over E 29/ 1095 and its other Mt Ida tenements is expected to commence later this month.

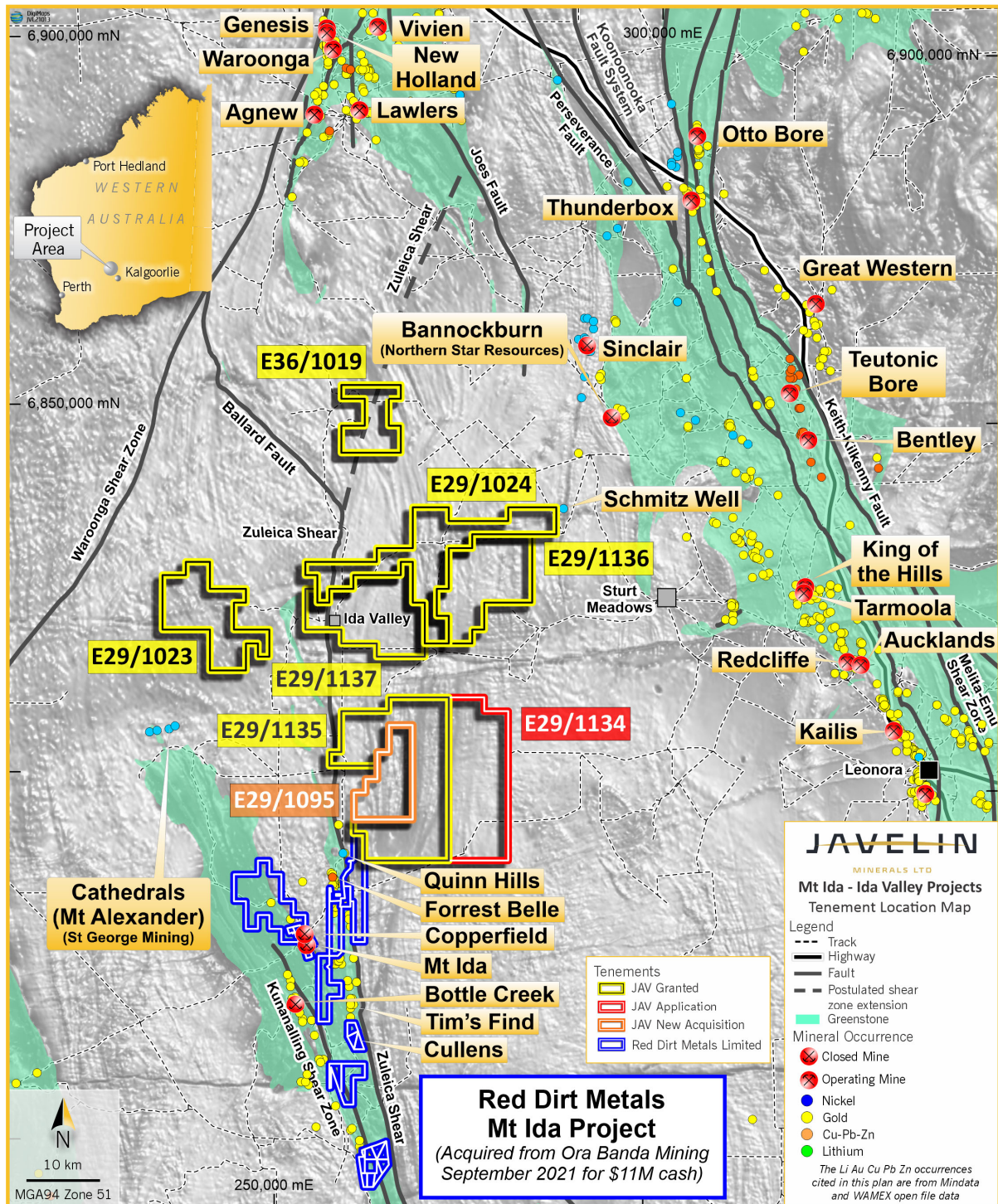


FIGURE 1. LOCATION PLAN MT IDA-IDA VALLEY PROJECT

This ASX announcement is authorised for market release by the Board of Javelin Minerals Limited.

For more information:

Please visit our website for more information: www.javelinminerals.com.au

or contact Matthew Blake, Executive Director: +61 419 944 396 or

matthew@javelinminerals.com.au