

Barton Gold



South Australia's Emerging Gold Developer

24 May 2022

**Presentation to London 121
Mining Investment Conference**

*Perseverance Mine,
Tarcoola Project*

Important Notices

Disclaimer

This document has been approved by the Board of Barton Gold Holdings Limited (ACN 633 442 618) (together with its affiliates, “Barton” or the “Company”) and has been prepared for the exclusive use of the party to whom Barton delivers this document (the “Recipient”). The information contained in this document has been prepared in good faith by Barton. However, no representation or warranty, either express or implied, is made as to the accuracy, completeness, adequacy or reliability of the information contained in this document. This document contains only a synopsis of more detailed information in relation to the matters described herein and accordingly no reliance may be placed for any purpose whatsoever on the sufficiency or completeness of such information as presented herein. This document should not be regarded by the Recipient as a substitute for the exercise of its own judgment and the Recipient should conduct its own due diligence in respect of the contents of this document. To the maximum extent permitted by law Barton, its directors, officers, employees, advisers, agents and related bodies corporate (“Barton Gold Group”) disclaim any or all liability for any loss or damage which may be suffered by any person as a result of the use of, or reliance upon, anything contained within or omitted from this document (regardless of whether the loss or damage arises in connection with any negligence, default, lack of care or misrepresentation by the Barton Gold Group or any other cause in connection with the provision of this document or the purported reliance on this document or the information contained in it). To the extent that any provisions in this Important Notices section may be construed as being a contravention of any law of the State or the Commonwealth, such provisions should be read down, severed or both as the case may require and the remaining provisions shall continue to have full force and effect.

This document has been prepared solely for informational purposes. This document does not constitute a prospectus and is not to be construed as a solicitation or an offer to buy or sell any securities, or related financial instruments, in any jurisdiction. The Recipient should not construe the contents of this document as legal, tax, accounting or investment advice or a recommendation. This document does not purport to contain all of the information a Recipient would require to make an informed decision whether to invest in the Company. Specifically, this document does not purport to contain all the information that investors and their professional advisers would reasonably require to make an informed assessment of the Company’s assets and liabilities, financial position and performance, profits, losses and prospects. The Recipient must not rely on the information set out in this document and must make its own independent assessment and consult its own legal counsel, tax and financial advisors concerning any matter described herein. This document does not purport to be all-inclusive or to contain all of the information that the Recipient may require. No investment, divestment or other financial decisions or actions should be based solely on the information in this document. The distribution of this document may be restricted by law in certain jurisdictions.

This document must be treated as strictly confidential and must not be copied, reproduced, distributed, quoted, referred to or distributed to others at any time, in whole or in part, without the prior written consent of Barton.

Cautionary Statement Regarding Forward-Looking Information

The figures, valuations, forecasts, estimates, opinions and projections contained herein involve elements of subjective judgment and analysis and assumption. Barton does not accept any liability in relation to any such matters, or to inform the Recipient of any matter arising or coming to the company’s notice after the date of this document which may affect any matter referred to herein. Any opinions expressed in this material are subject to change without notice, including as a result of using different assumptions and criteria. This document may contain forward-looking statements. Forward-looking statements are often, but not always, identified by the use of words such as “seek”, “anticipate”, “believe”, “plan”, “expect”, “target” and “intend” and statements that an event or result “may”, “will”, “should”, “would”, “could”, or “might” occur or be achieved and other similar expressions. Forward-looking information is subject to business, legal and economic risks and uncertainties and other factors that could cause actual results to differ materially from those contained in forward-looking statements. Such factors include, among other things, risks relating to property interests, the global economic climate, commodity prices, sovereign and legal risks, and environmental risks. Forward-looking statements are based upon estimates and opinions at the date the statements are made. Barton undertakes no obligation to update these forward-looking statements for events or circumstances that occur subsequent to such dates or to update or keep current any of the information contained herein. Any estimates or projections as to events that may occur in the future (including projections of revenue, expense, net income and performance) are based upon the best judgment of Barton from information available as of the date of this document. There is no guarantee that any of these estimates or projections will be achieved. Actual results will vary from the projections and such variations may be material. Nothing contained herein is, or shall be relied upon as, a promise or representation as to the past or future. Any reliance placed by the Recipient on this document, or on any forward-looking statement contained in or referred to in this document will be solely at the Recipient’s own risk. The Barton Gold Group expressly disclaims any and all liability relating or resulting from the use of all or any part of this document or any of the information contained herein.

Date and Currency

This document is dated 23 May 2022 (“Preparation Date”) and is based on the Company’s prospectus dated 14 May 2021 (“Prospectus”) for an offer to acquire fully paid ordinary shares (“Shares”) in the capital of the Company (“Offer”), updated for the results of the Offer, and Barton ASX announcements as from the date of the Prospectus. A copy of the Prospectus is available for download at www.bartongold.com.au or www.asx.com.au. The delivery of this document at any time after the Preparation Date does not imply the information contained in it is correct at any time after the Preparation Date. Delivery of this document does not imply, and is not to be relied upon as a representation or warranty that: (i) there has been no change since the Preparation Date in the business, operations, financial condition, prospects, creditworthiness, status or affairs of the Company or any of the Company’s related bodies corporate or affiliates; or (ii) the information contained in this document remains correct and not misleading at any time after the Preparation Date. The information in this document should be considered dynamic and may change over time. Subject to its obligations at law, Barton has no responsibility or obligation to update this document or inform the recipient of any matter arising or coming to their notice after the Preparation Date which may affect any matter referred to in the document. All dollar values expressed in this document are Australian dollars (\$, A\$, or AUD).

Investment Highlights

Rapidly Building Scale in a Proven Gold District

Strategic SA Platform

- **South Australia:** ~25% of AUS gold, ~2.5% of production¹
- ~4,660km² tenements and JV rights in world class province
- ~1.1Moz Au JORC (2012) Mineral Resources² and ownership of the region's only gold mill

Scale Objectives

- Demonstrate multi-million Oz Resource potential
- Develop large-scale production with multiple mills

Excellent Corporate Platform

- The right **people, assets and plan** to deliver growth
- AUD \$10.8 million cash at 31 Mar 2022²
- Targeting +20,000m drilling for 2022 (underway³) with **Mineral Resource updates planned for end of year**



¹ Government of South Australia – Dept for Energy & Mining, Geoscience Australia

² Refer to Prospectus and Barton ASX announcement dated 14 October 2021

³ Refer to Barton ASX announcement dated 28 April 2022

Development Strategy

Build Long-Term Value in Scale, Efficiency & Optionality

Leverage Foundations

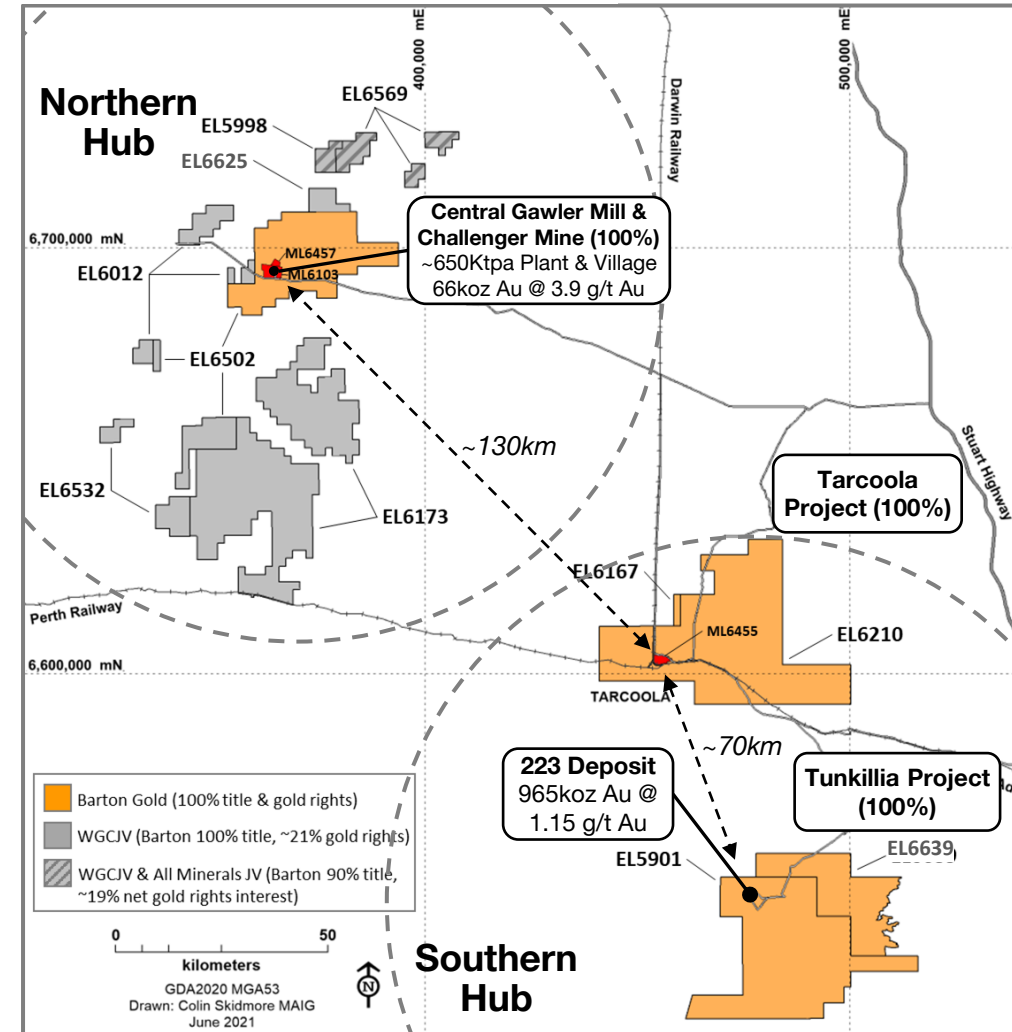
- Southern Hub = key growth development focus
- Northern Hub = development / regional optionality

Demonstrate Multi-Moz Potential

- **Focus on Southern Hub for Resources growth**
 - Current ~1Moz Au JORC (2012) Resources
 - Limited drilling across +100km of shear zones
- **Focus on shallow, open-pittable mineralisation**
 - Immediate extensions of existing Resources and dozens of high-priority regional targets

Strategic Infrastructure Position

- **Existing mill = region's only gold mill with limited refurb costs⁽¹⁾, provides leverage to ~319k regional JV ounces² and 'Stage 1' development options**



¹ Refer to Prospectus

² Refer to Prospectus and Barton ASX announcement dated 14 October 2021


Innovation Focus

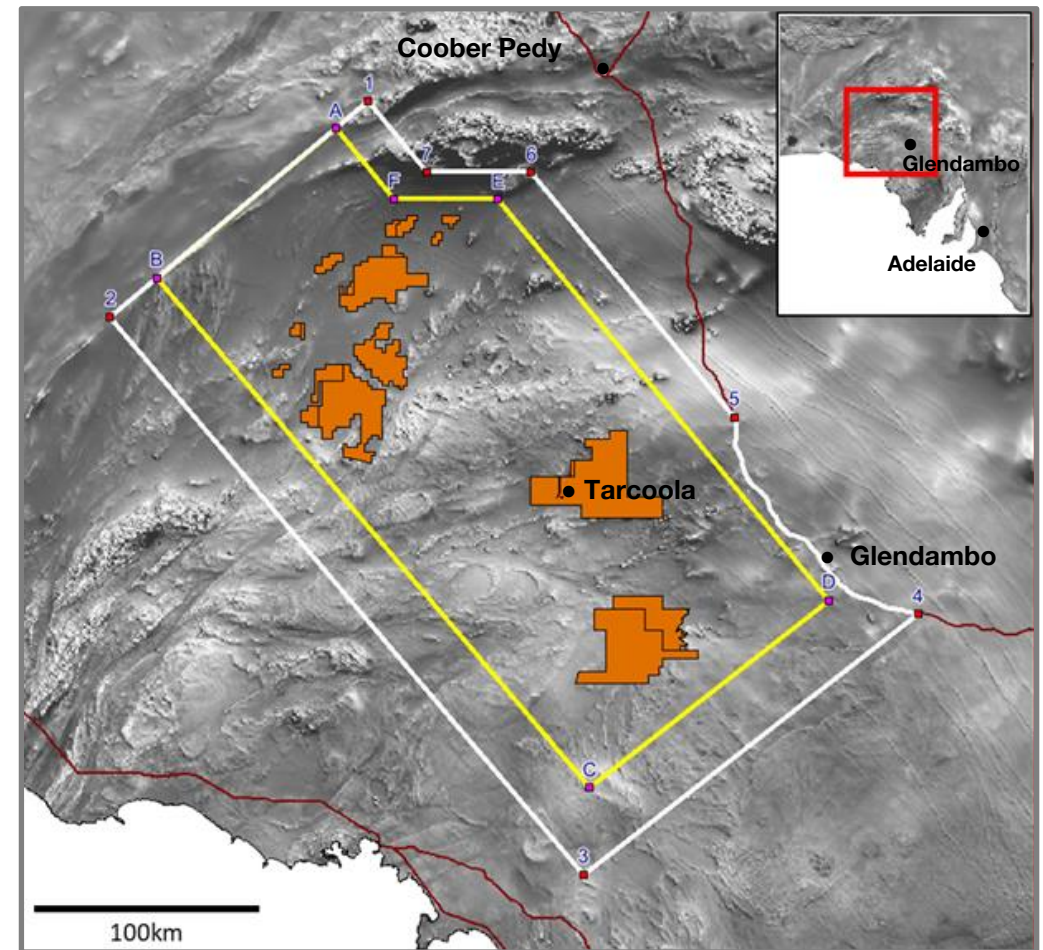
Barton Gold

Leveraging Technology to Accelerate Outcomes

- Barton is **driving innovation** in the central Gawler Craton
- Actively testing new applications of old technologies, and trialling novel technologies, to accelerate progress
- Working with CSIRO and other industry-leading innovators and services providers including:



- Major R&D Partnership announced with  SENSORE to adapt AI / ML technology to 60,000km² of Gawler Craton¹
- Significant early successes and Government sponsorship



Barton Gold / SensOre Ltd R&D Partnership Area with Phase I (Yellow) & Phase II (White) Areas of Exclusivity

¹ Refer to Barton ASX announcement dated 21 March 2022

Rapid Progress Since June 2021 IPO¹

Building Momentum & Value

Exploration:

- ✓ +25 new shallow targets on existing ML
- ✓ **3 new gold zones in Southern Hub**
 - ~2km new mineralisation
 - ~66% strike increase (total ~5km)

Corporate:

- ✓ New SA-based corporate leadership team
- ✓ New in-house project and geology team
- ✓ Multiple exploration / technology R&D initiatives
- ✓ **\$380,000 in Government grants received**

Barton is:

- developing new geological models;
- rapidly growing project footprints; and
- laying foundations for large-scale development

¹ Refer to Barton ASX announcements dated 4 / 6 August, 9 / 13 / 27 / 29 September, 6 / 20 / 27 October, 3 / 8 / 15 November 2021, 7 December 2021 and 17 January 2022

Capital Structure³

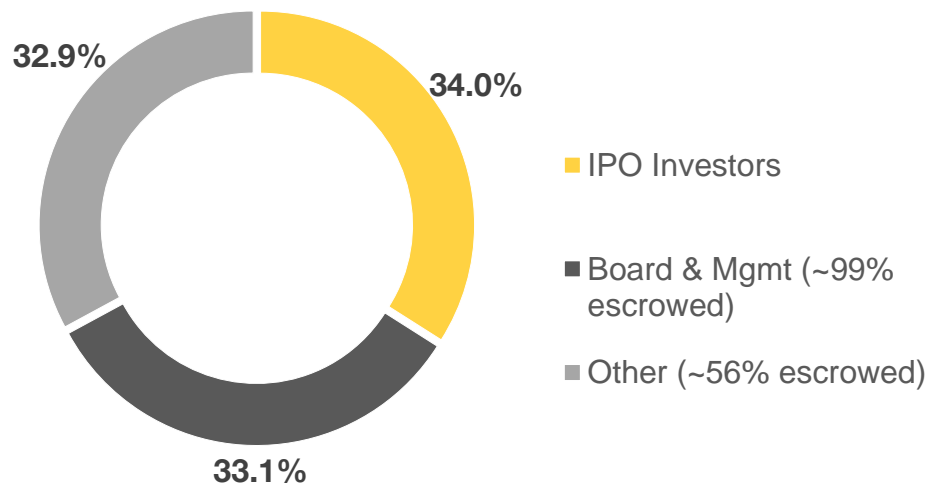
Shares on Issue	175,616,719
Market Cap (\$0.22 / share)	\$38.6m
Cash (31 Mar 2022) ⁴	\$10.8m
Enterprise Value ⁵	\$27.8m
Options on Issue ³	11,490,080

³ Refer to Prospectus and ASX announcements dated 12 Nov 2021 and 8 Apr 2022.

⁴ Refer to Barton ASX announcement dated 28 April 2022.

⁵ Based upon market cap less cash at 31 Mar 2022 and nil debt. Subject to rounding.

Share Distribution



Board of Directors

Mark Connelly Non-Executive Chairman	<ul style="list-style-type: none"> Finance and operations professional with +30 years' resources experience Chairman of ASX-listed Oklo Resources, Chesser Resources, Calidus Resources
Ken Williams Non-Executive Chair Elect	<ul style="list-style-type: none"> +30 years' experience in Australian resources, aviation and financial services Formerly Treasurer and CFO for Normandy Mining (Newmont Australia)
Alexander Scanlon Managing Director & CEO	<ul style="list-style-type: none"> Economist with +15 years' experience in finance and principal investments Founder of Barton Gold and previously MD of PARQ Capital Management
Christian Paech Non-Executive Director	<ul style="list-style-type: none"> Lawyer with +25 years' experience in private and public / commercial practice Formerly General Counsel and Company Secretary of ASX-listed Santos Ltd
Graham Arvidson Non-Executive Director	<ul style="list-style-type: none"> Mechanical engineer with +15 years' experience in key project leadership roles GM Operations & Maintenance for Primero Group (NRW Holdings Ltd)
Neil Rose Non-Executive Director	<ul style="list-style-type: none"> Chartered accountant focused on commercial property and resources Founding Director of Barton Gold and a Director of Tribar Capital

Key Management & Technical Team

Nicholas Byrne Chief Financial Officer	<ul style="list-style-type: none"> CPA with ~30 years' resources and engineering sector experience ~20 years South Australian experience including as CFO of Heathgate Resources
Marc Twining Exploration Manager	<ul style="list-style-type: none"> Geologist with +25 years' experience in resources exploration and development Formerly exploration geologist with gold majors Normandy and Newmont
Ian Garsed Principal Geologist	<ul style="list-style-type: none"> Geologist with +25 years' experience in resources discovery and definition Extensive South Australian gold and IOCG mineralisation experience
Shannon Coates Company Secretary	<ul style="list-style-type: none"> Qualified lawyer and Chartered Secretary with +25 years' experience Company Secretary to multiple ASX-listed companies

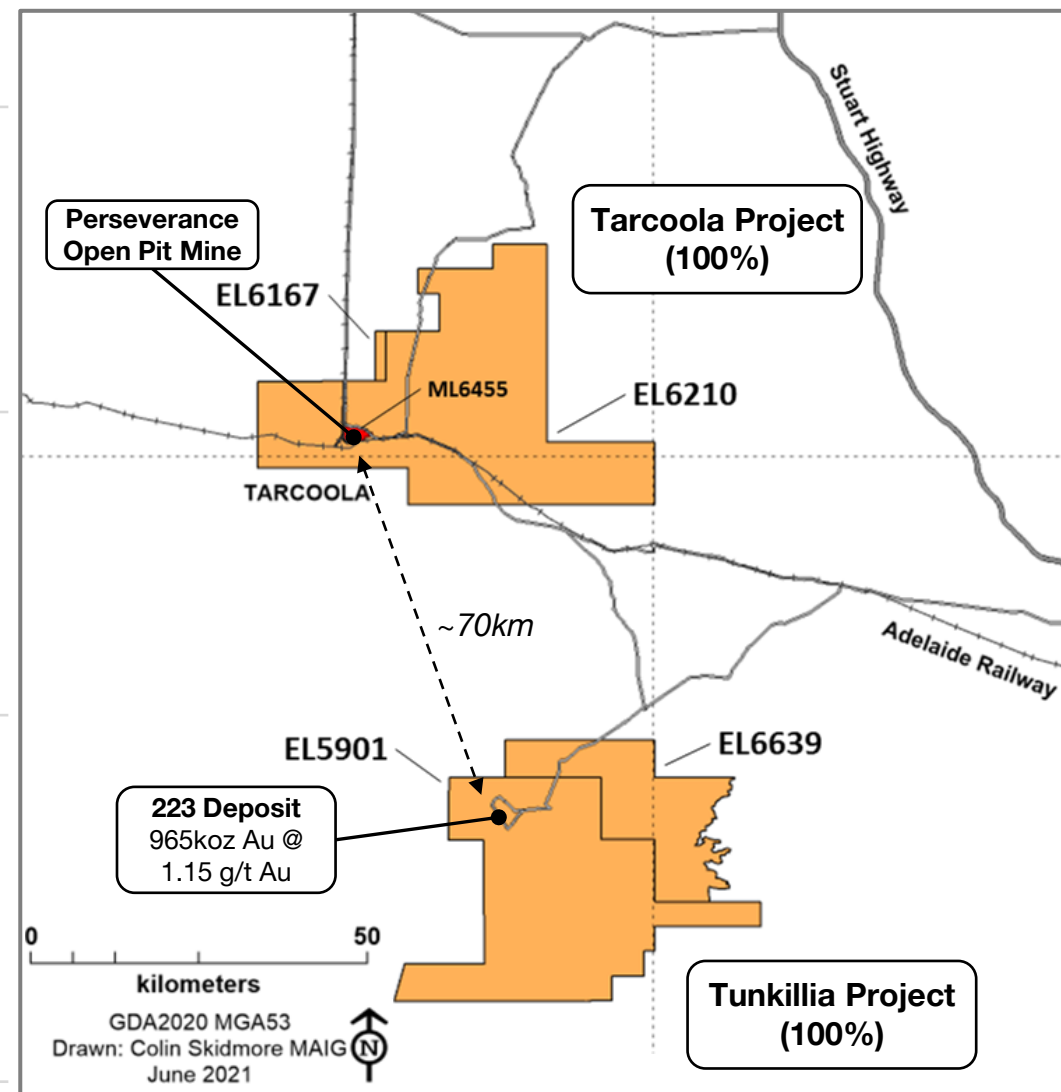
¹ Refer to Prospectus and Barton ASX announcement dated 14 October 2021

² Refer to Prospectus; estimates based upon Company analysis

Southern Hub Overview

Underexplored Large-Scale Platform

- | | |
|---|--|
| Tarcoola | <ul style="list-style-type: none">▪ 100% owned▪ 1,202km² tenement package¹▪ Perseverance Open Pit mine (2017 / 2018)¹ |
| Tunkillia | <ul style="list-style-type: none">▪ 100% owned▪ 1,285km² tenement package¹▪ 965,000oz Au 223 Deposit (1.15 g/t Au)¹ |
| Multi-Million Ounce Gold Potential | <ul style="list-style-type: none">➤ Two large mineralised systems, ~70km apart, with limited historical drilling➤ Multiple advanced targets, growing rapidly➤ 2022 drilling programs underway² |



¹ Refer to Prospectus

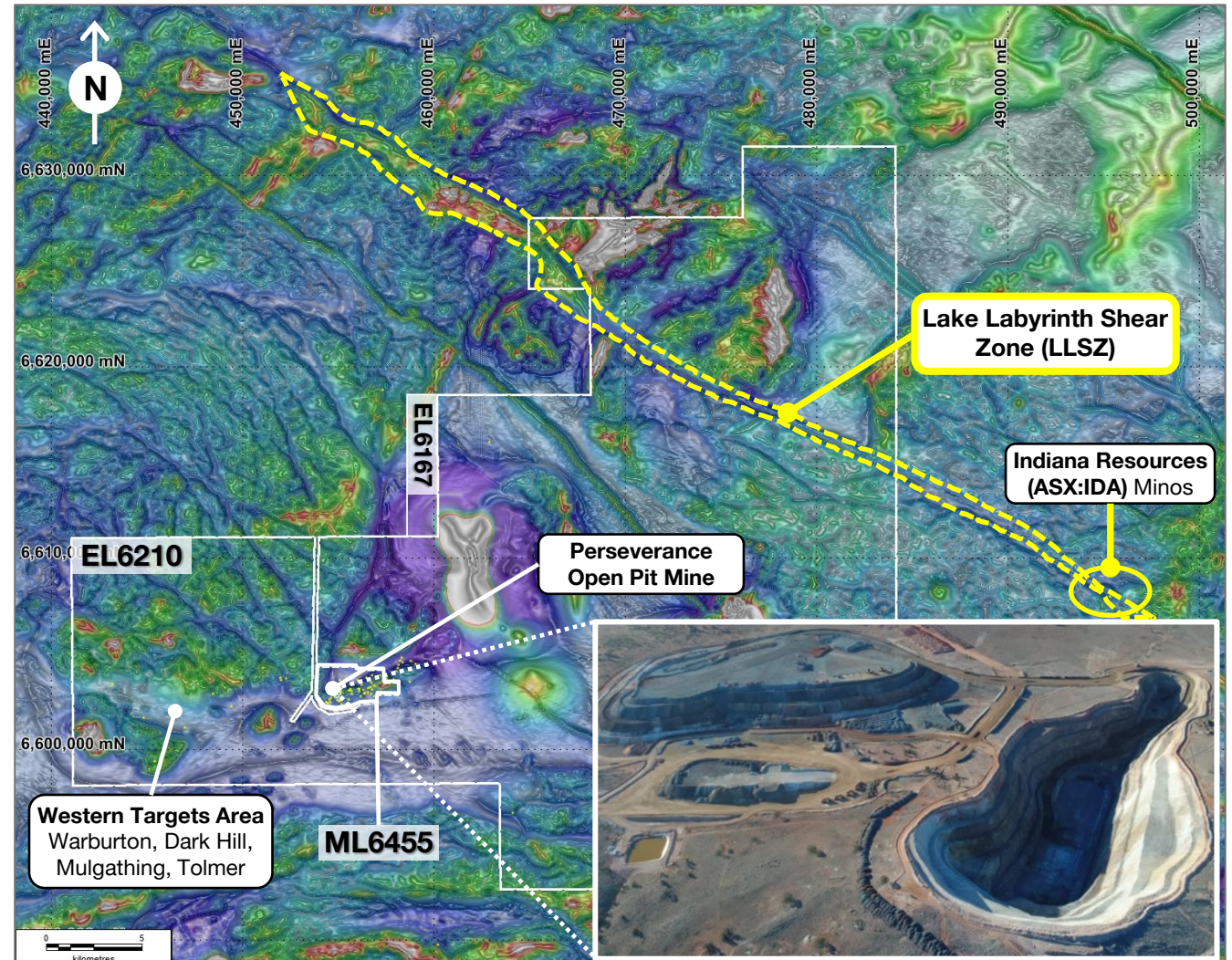
² Refer to Barton ASX announcement dated 28 April 2022

Tarcoola Proven Producer, Scale Potential

Barton Gold

Untested Camp-Scale Systems

- 1,202km² contiguous tenement package¹
- Historical Tarcoola Gold Field **produced ~77koz Au @ avg ~37.5 g/t Au** (1900 – 1955)¹
- Brownfields open pit opportunities (ML6455):
 - **Produced avg ~3.8 g/t Au ore during 2018** to Barton's Central Gawler Mill¹
 - **High-grade extensions**⁽²⁾ and local targets³
- Rapidly advancing multiple targets across untested regional geology (EL6210):
 - **~14km long shear set near Perseverance¹ and ~20km of Lake Labyrinth Shear Zone**



Tarcoola Project Magnetic RTP with Regional Structure (Inset: Perseverance Mine)¹

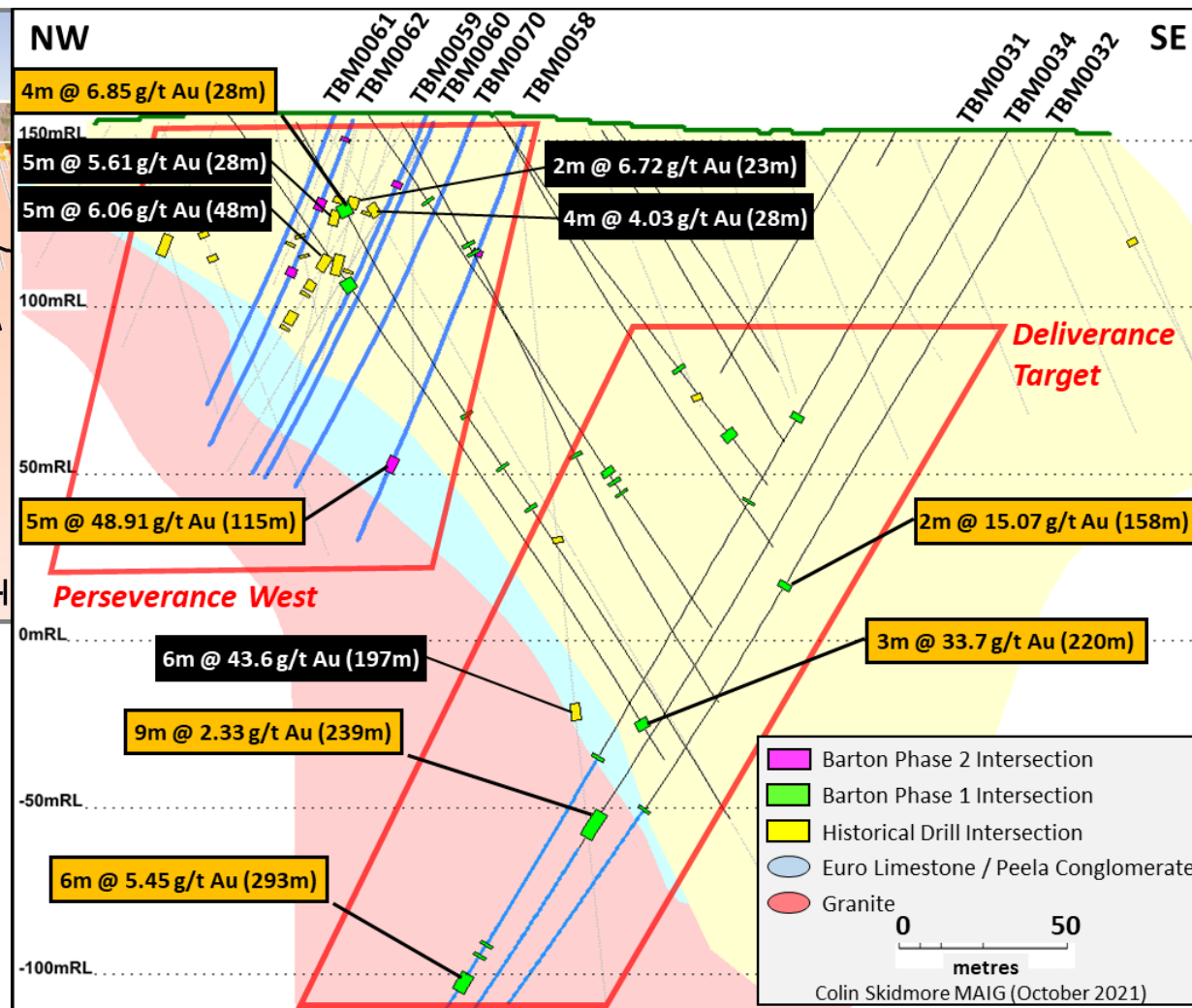
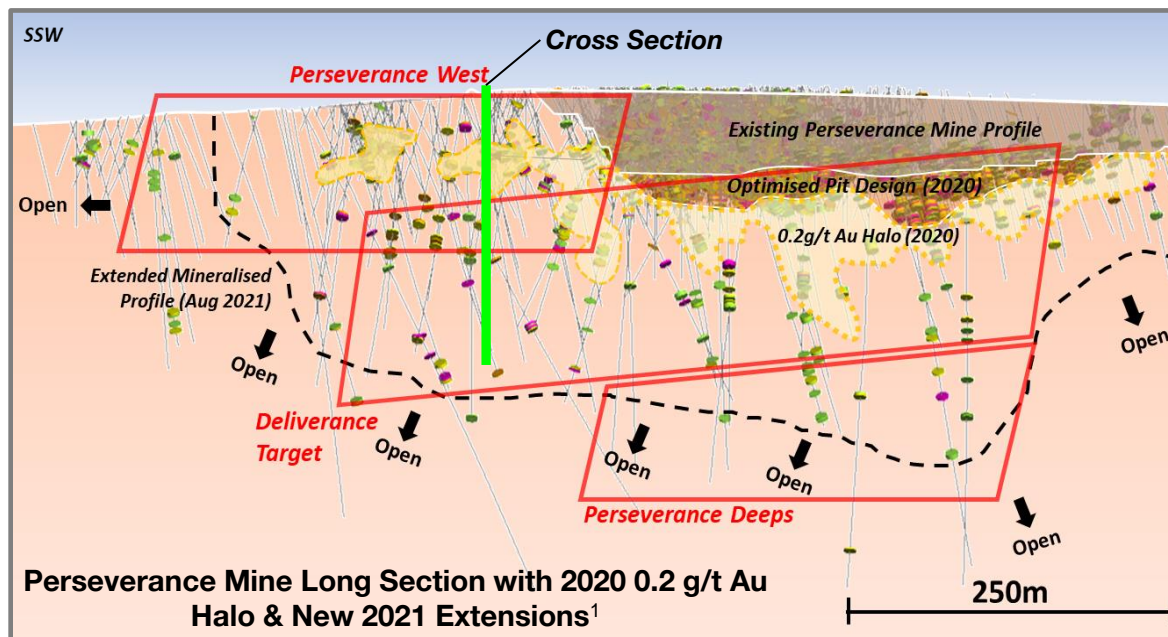
¹ Refer to Prospectus

² Refer to Prospectus and Barton ASX announcements dated 20 / 27 October 2021

³ Refer to Barton ASX announcements dated 12 July and 29 September 2021

Tarcoola Open Pit Extensions

Majority of Intersections Not Yet Included in Mineral Resources



Perseverance West:¹

- 4m @ 6.85 g/t Au [28-32m]
- 7m @ 9.72 g/t Au [42-49m]
- 5m @ 20.6 g/t Au [59-64m]
- 6m @ 8.76 g/t Au [96-102m]
- 4m @ 11.4 g/t Au [111-115m]
- 5m @ 48.9 g/t Au [115-120m]

Deliverance Target:¹

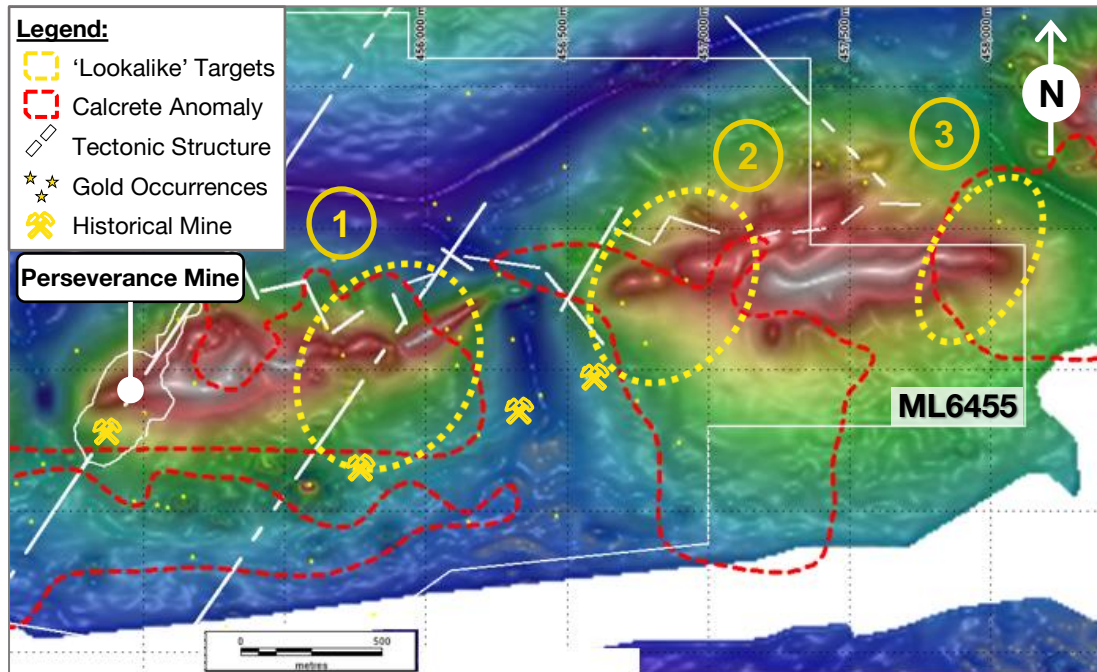
- 5m @ 20.6 g/t Au [59-64m]
- 2m @ 56.7 g/t Au [92-94m]
- 4m @ 11.4 g/t Au [107-111m]
- 4m @ 14.8 g/t Au [138-142m]
- 6m @ 43.6 g/t Au [197-203m]
- 3m @ 33.7 g/t Au [220-223m]

¹ Example drilling results, refer to Prospectus and Barton ASX announcements dated 20 / 27 October 2021

² Refer to Barton ASX announcement dated 27 October 2021 for additional details of cross section shown

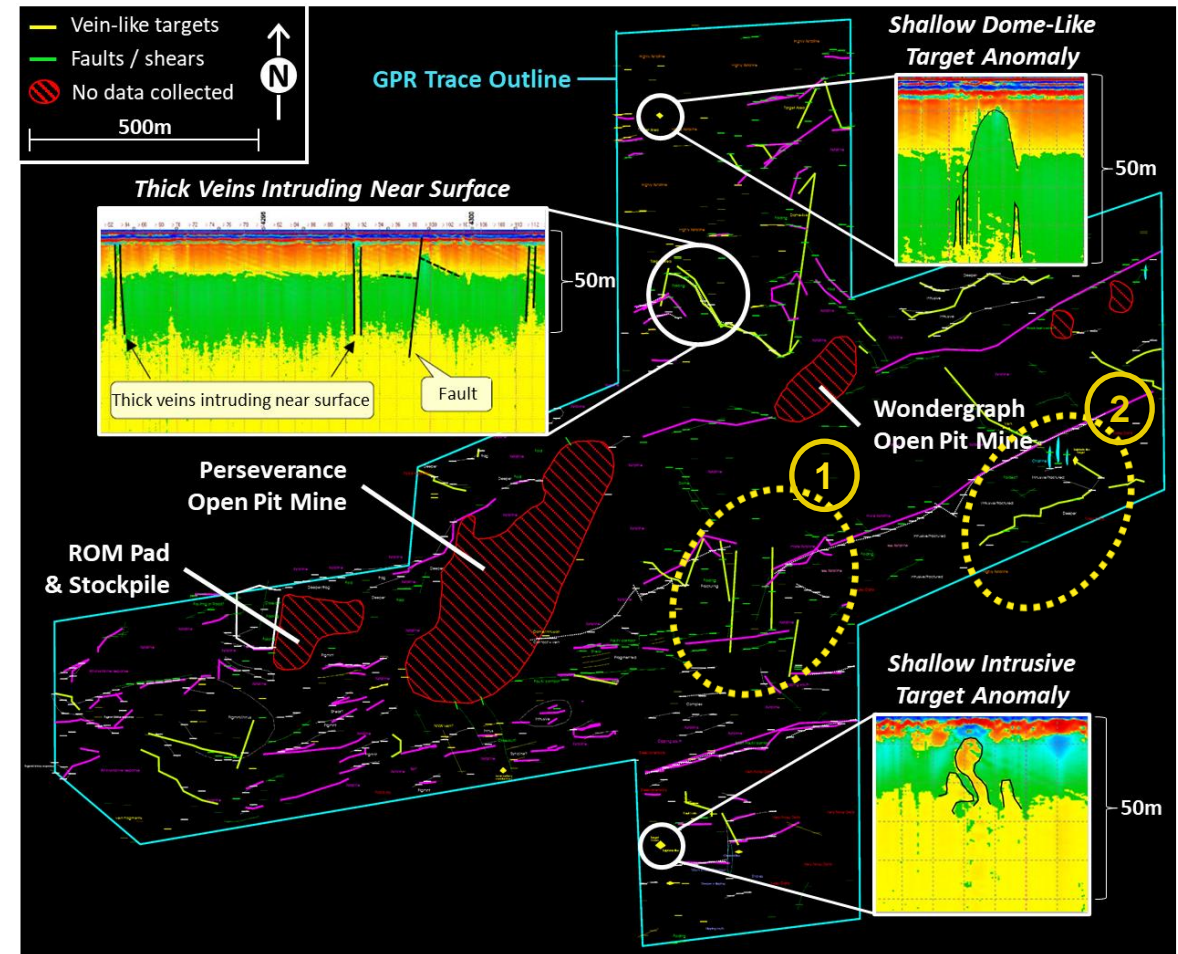
Tarcoola Multiple Shallow ML Targets

R&D Applications Providing High-Value Opportunities



Potential Near-Mine 'Perseverance Repeat' Targets within ML6455¹

- Ground penetrating radar (GPR) confirms pre-IPO theses with **25+ new shallow targets** near open pit¹
- Vein-like and intrusive targets **from 2 - 10m depth**¹



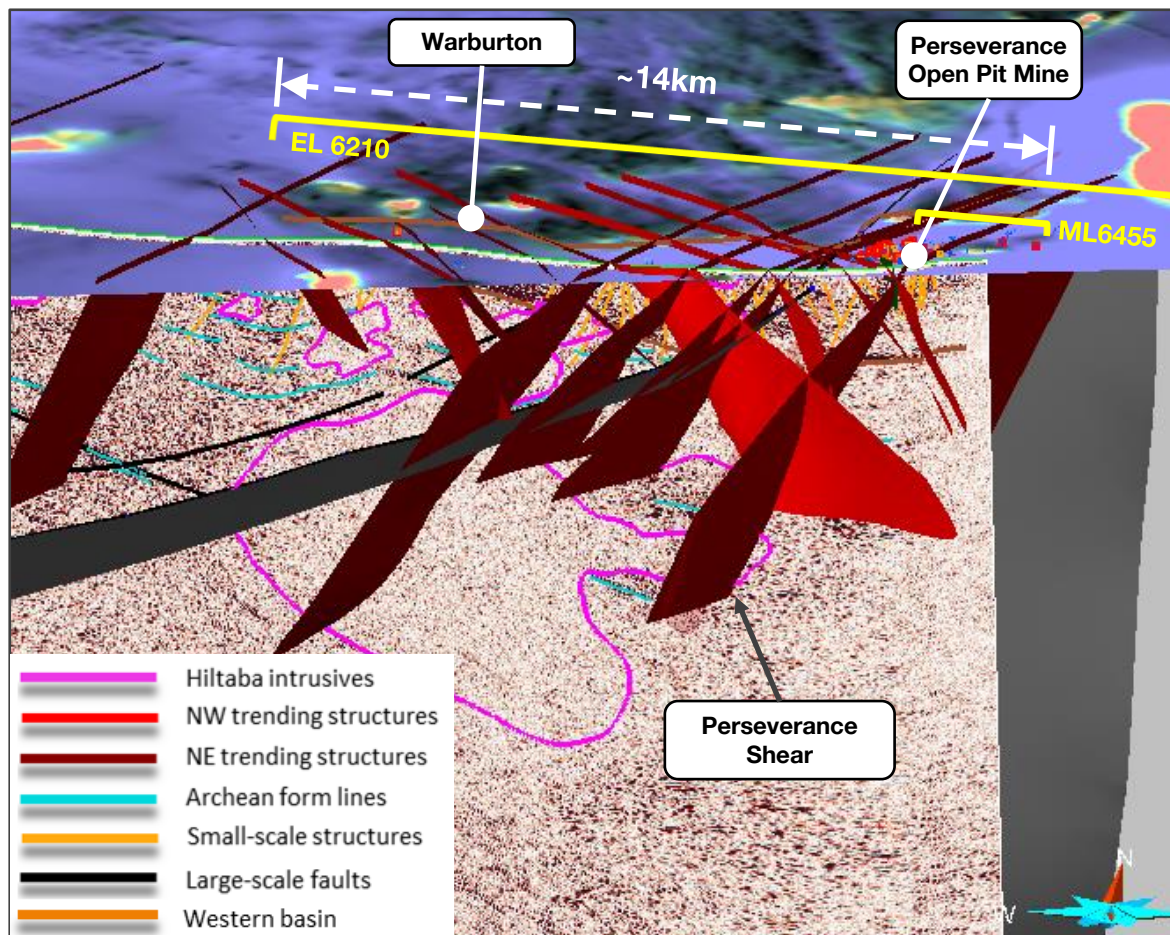
ML6455 – GPR Survey Area with New Vein Targets (Yellow) & Other Anomalies

¹ Refer to Barton ASX announcement dated 29 September 2021

Tarcoola Camp-Scale Shear Systems

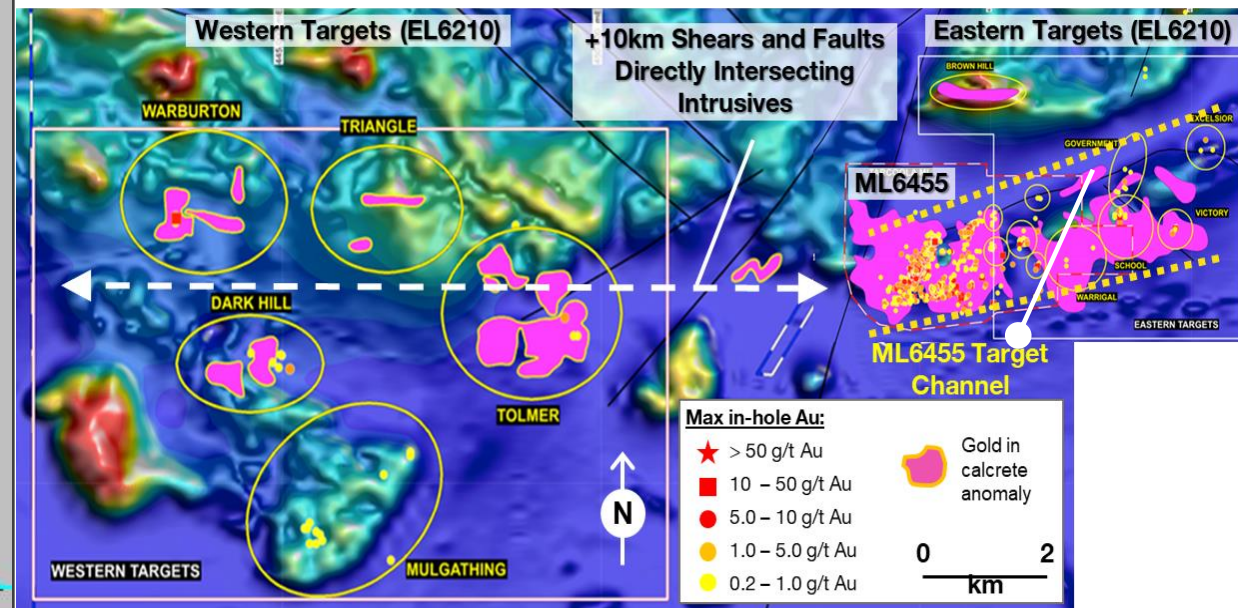
Barton Gold

Significant Regional Discovery Potential¹



Tarcoola Interpreted Structural Architecture in 3D (Looking N/NW)¹

- **New structural model (2020)** – 14km of analogous shears indicates significant potential for ‘Perseverance Repeats’¹
- **Validates historical data** – Anglogold drilling (Sep 1997) at Warburton includes **16m @ 3.4 g/t Au from 4m depth**²



Priority Regional Targets Overlying Regional Architecture¹

¹ Refer to Prospectus

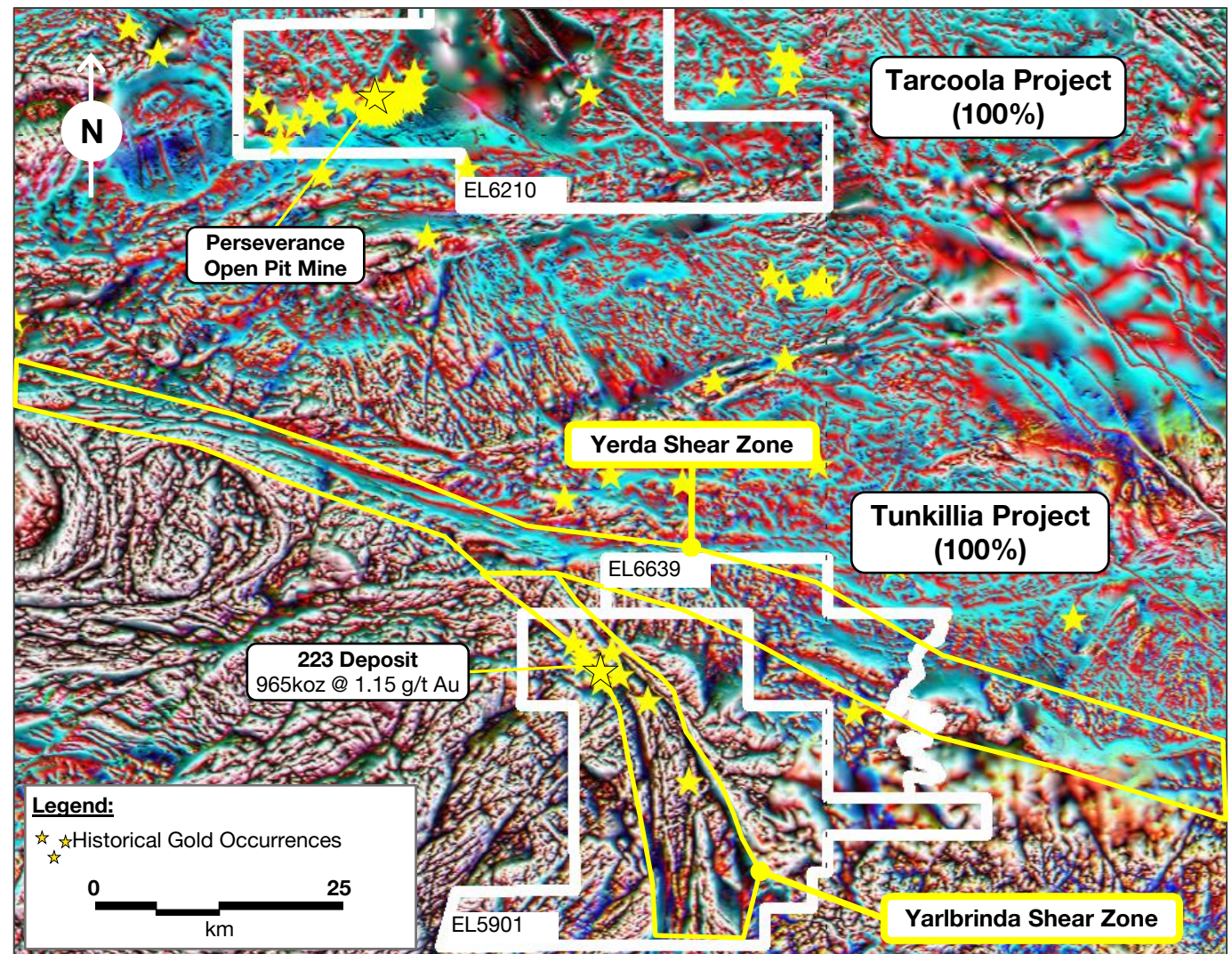
² Refer to Barton ASX announcement dated 10 March 2022

Tunkillia ~1Moz Au Growth Platform

Barton Gold

Large-Scale Mineralisation

- 1,285km² contiguous tenement package¹
- ~50km strike on shears analogous to major Kalgoorlie Shear Zone systems¹
- Cornerstone 223 Deposit with **965koz Au**
 - 1.15 g/t Au, with ~68% Indicated²
- Most historical drilling during late 1990s / early 2000s (USD \$300 - 800 / oz gold price)
- **Multiple targets and growing rapidly with:**
 - ~1.5km new mineralisation (total ~4km)
 - ~250m long higher-grade zone confirmed in centre of 223 Deposit³



Tunkillia Project with Yerda & Yarlbrinda Shear Zones¹

¹ Refer to Prospectus

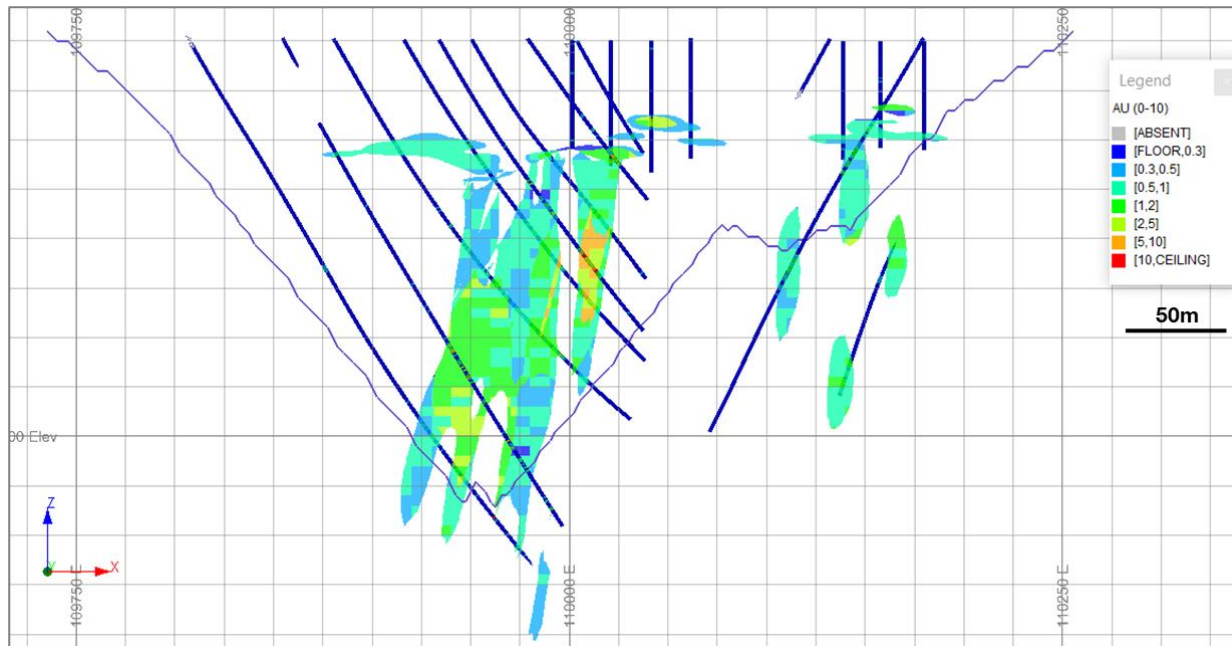
³ Refer to Barton ASX announcements dated 3, 8 and 15 November 2021

² Refer to Prospectus and Barton ASX announcement dated 15 November 2021; 223 Deposit Mineral Resource Estimate consists of 26.1Mt @ 1.15 g/t Au)

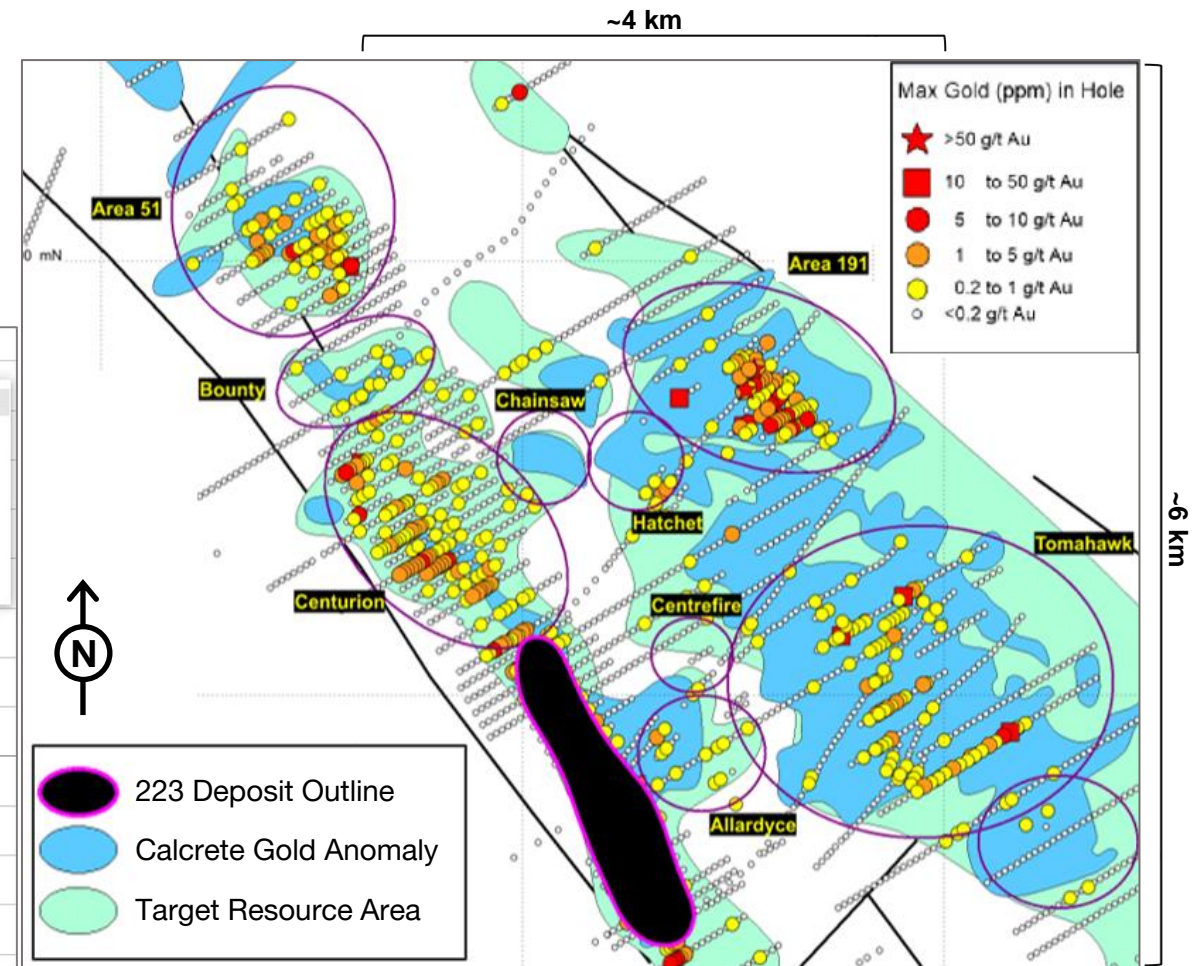
Tunkillia High Value Road Map

Advanced Targets = Immediate Camp-Scale Opportunity

- 223 Deposit: ~2.5km long with **broad mineralisation and higher-grade domains**, open to extensions
- **Advanced satellite targets** are prospective for large-scale discoveries and significant new mineralisation¹



Cross-Section Through 111,450mN Showing Block Model, Drillholes and RPEEE Optimised Pit Outline (Blocks and Drillholes Coloured by Au Grade – See Legend)¹



Tunkillia Project Showing 'Line of Lode' Mineralised Targets Along Western and Eastern Shear Margins¹

¹ Refer to Prospectus

Tunkillia Rapid Growth

Barton Gold

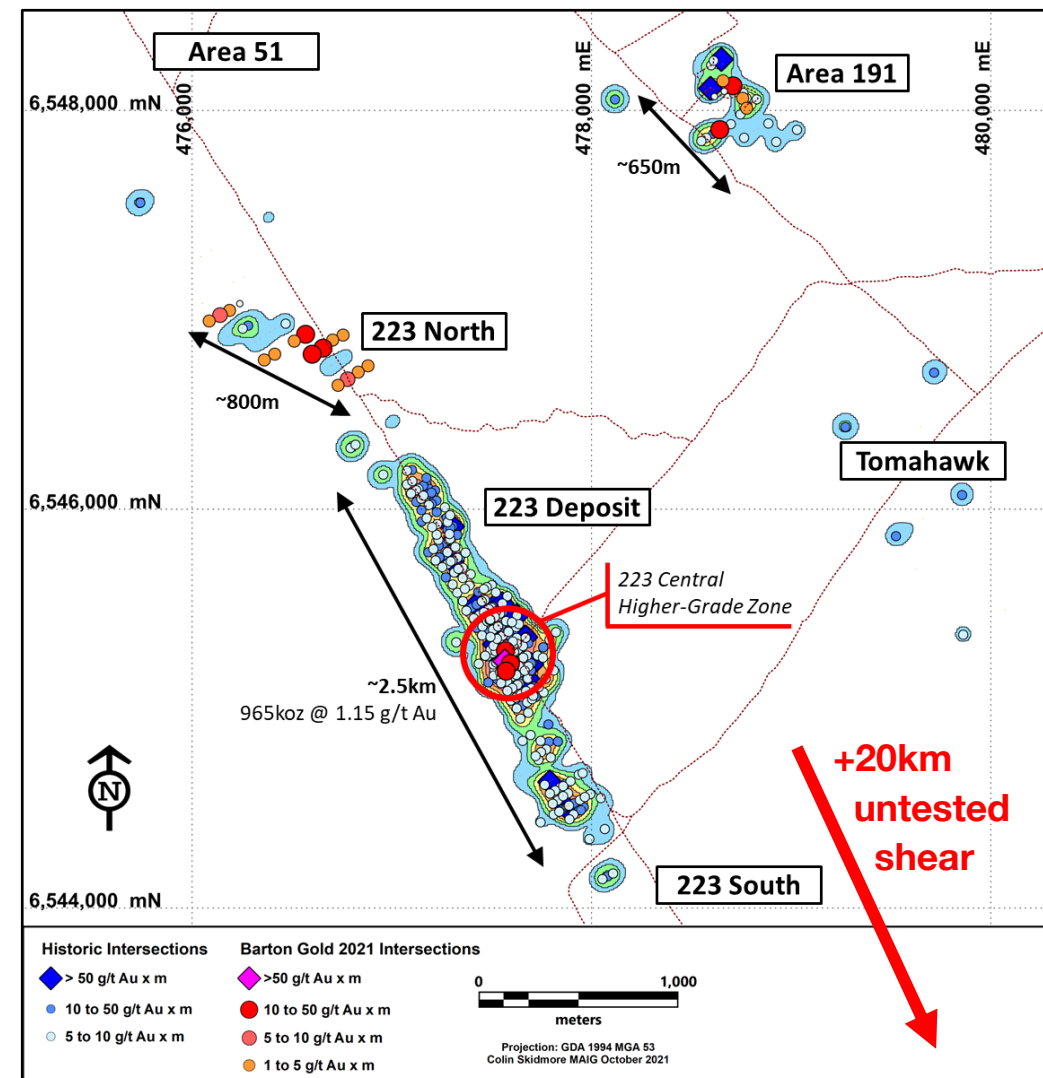
Converting Historical Data with New Analysis

- The 223 Deposit is part of a much larger mineralised system
- **Rapidly expanding footprint:**²
 - **2 new gold zones** (223 North and Area 191)
 - **60% increase in mineralised strike** to a total ~4km
 - **250m long higher-grade zone** in 223 Deposit:

Hole TKB0025: combined 44m @ avg 3.4 g/t Au

5m @ 4.98 g/t Au (68-73m)	17m @ 4.31 g/t Au (111-128m)
7m @ 2.20 g/t Au (79-86m)	15m @ 2.28 g/t Au (139-154m)

- Potential to apply new tech and predictive models across next **+20km of untested Yarlbrinda Shear Zone**



Tunkillia Project with 223 Deposit, 223 North and Area 191 Gold Zones²

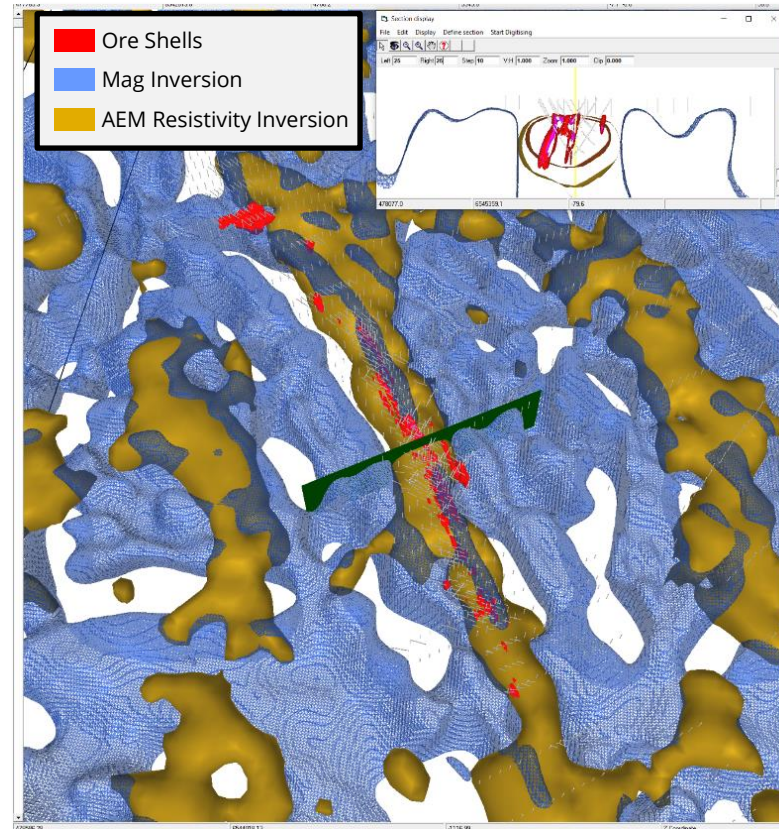
¹ Refer to Prospectus

² Refer to Barton ASX announcements dated 3 / 8 / 15 November 2021

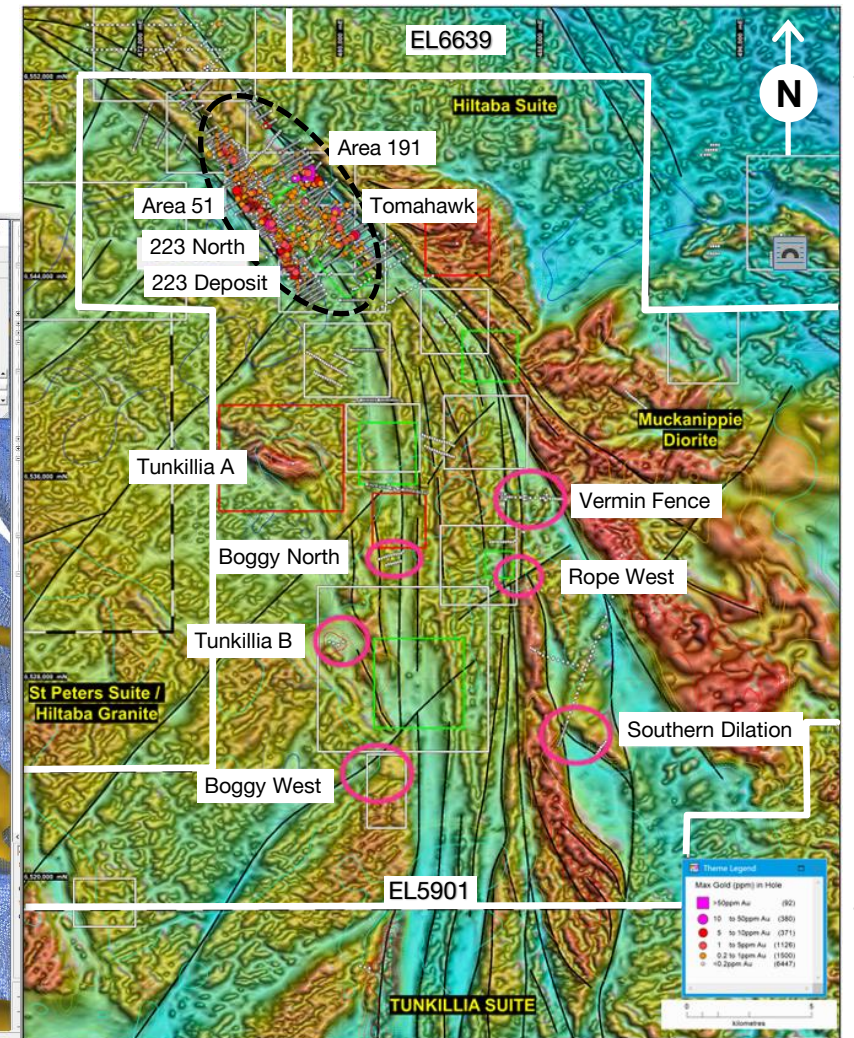
Tunkillia Untapped District Scale Potential

Major Structure in Historical Gold District

- Yarbrinda Shear Zone mostly untested despite 223 Deposit
- 223 Deposit covers only a tiny portion of structure
- Technology driving new predictive target models
- **Drilling validates models** for 223 North and 191 areas
- **Models predict southern repeats** of mineralisation
- **Targeting district scale discoveries** and development



223 Deposit Cross Section w/ Magnetic Inversion & AEM Resistivity Inversion



Tunkillia Regional Targets Along Yarbrinda Shear Zone¹

¹ Refer to Prospectus

Conclusion

Driving Towards Asset Development

- **Strategic platform** with majority of regional Au Resources and ownership of only regional gold mill
 - **Leveraging innovation** to identify opportunities and growing rapidly at Tarcoola + Tunkillia
 - **Clear opportunities** for major discoveries with +20,000 metres drilling programs now underway
 - **Excellent team** and relationships with local and Government stakeholders to drive progress
- ➔ **Advanced entry to new district scale play, with strategic holdings and infra leverage**



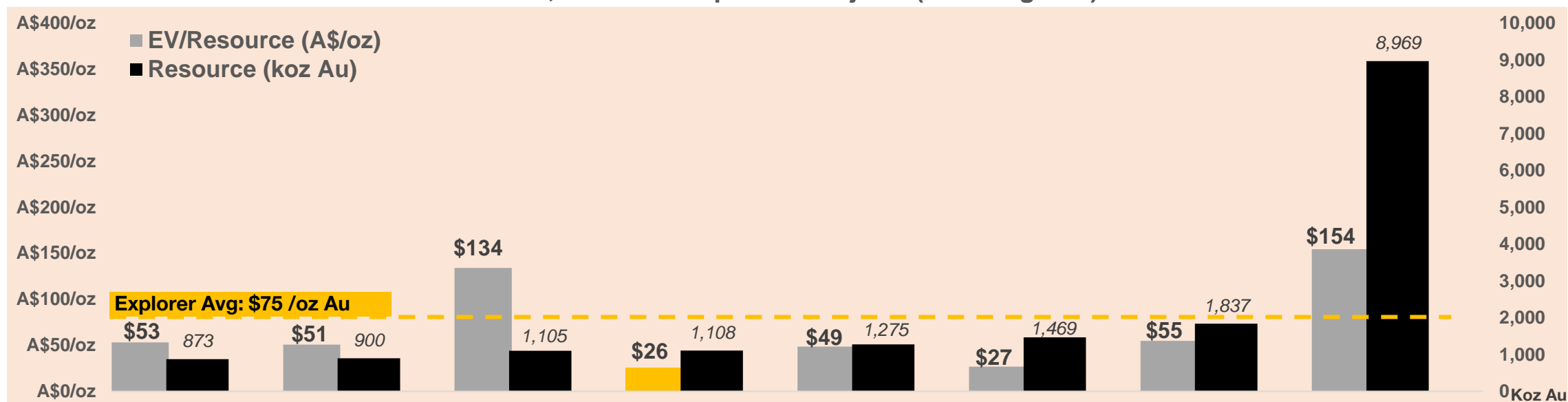
Barton is creating outsized shareholder value in a premium, low-risk gold jurisdiction

Compelling Value

Barton Gold

Positioned to Outperform

Barton Gold ASX Peer Group¹
ASX Listed, Australian Open Pit Projects (sub 1.3 g/t Au)



	Kairos Minerals	Astral Resources	Apollo Consolidated	Barton Gold	Kin Mining	Saturn Metals	Ausgold Limited	De Grey Mining	Explorer Average
ASX Code:	KAI	AAR	AOP	BGD	KIN	STN	AUC	DEG	
Project:	Pilbara	Mandilla	Lake Rebecca	Tarcoola / Tunkillia	Cardinia	Apollo Hill	Katanning	Mallina	
Location:	WA	WA	WA	Central SA	WA	WA	WA	WA	
Stage:	Exploration	Exploration	Scoping	Exploration	PFS	Exploration	Scoping	Scoping	
Infrastructure:	Nil	Nil	Nil	650ktpa CIP	Nil	Nil	Nil	Nil	
Resource (koz):	873	900	1,105	1,108	1,275	1,469	1,837	8,969	2,192
Grade (g/t Au):	1.30	1.03	1.20	1.20	1.27	0.60	1.24	1.20	1.11
M&I Resource (%):	42%	47%	74%	60%	63%	52%	65%	43%	56%
EV (A\$):	\$46.3m	\$45.7m	\$148.1m	\$28.3m	\$62.0m	\$39.5m	\$100.8m	\$1,384.0m	\$231.9m
EV / oz (A\$):	\$53.1	\$50.7	\$134.0	\$25.6	\$48.7	\$26.9	\$54.9	\$154.3	\$74.7

¹ See Peer Comparison Data Sources at annexures; based upon ASX share prices as at market close on 18 May 2022. Average Grade is weighted average by tonnes and grade. Apollo Consolidated (AOP) is a 'transaction comparable' and was acquired by Ramelius Resources and removed from Official List of the ASX on 16 Dec 2021.

Barton Gold

Suite 5, 62 Ord Street, West Perth, WA 6005 Australia
contact@bartongold.com.au

www.bartongold.com.au

Alexander Scanlon
Managing Director & CEO
a.scanlon@bartongold.com.au
+61 425 226 649

Mark Connelly
Non-Executive Chairman
mark@mconnelly1.com
+61 408 902 651

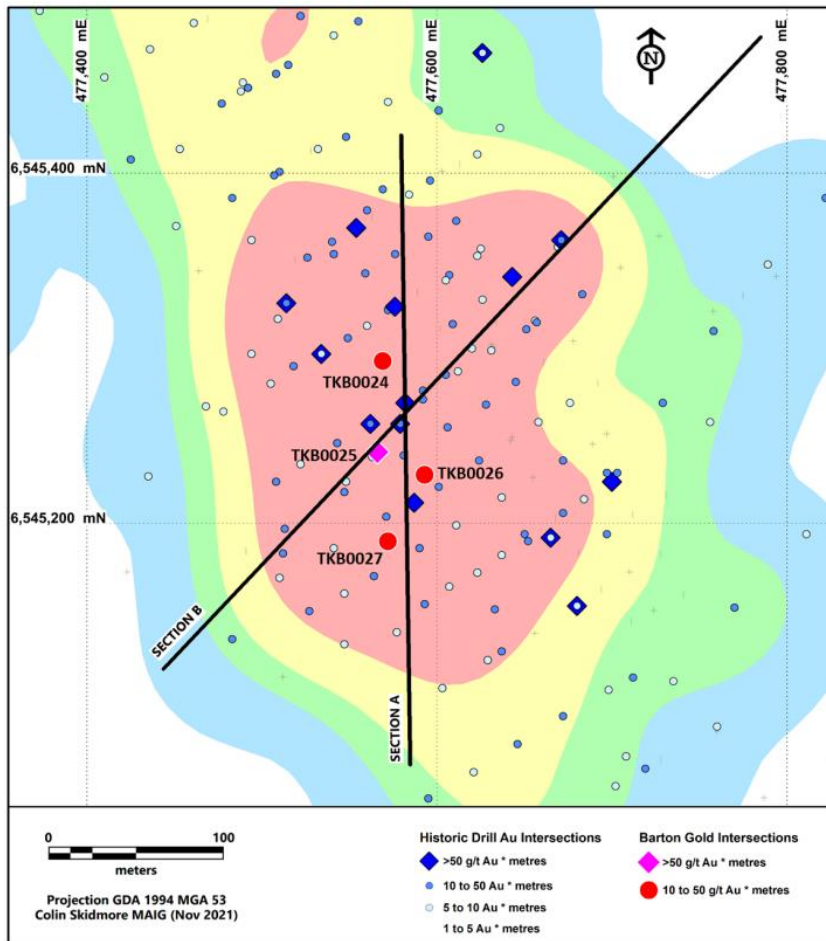
Shannon Coates
Company Secretary
cosec@bartongold.com.au
+61 8 9322 1587

Annexures

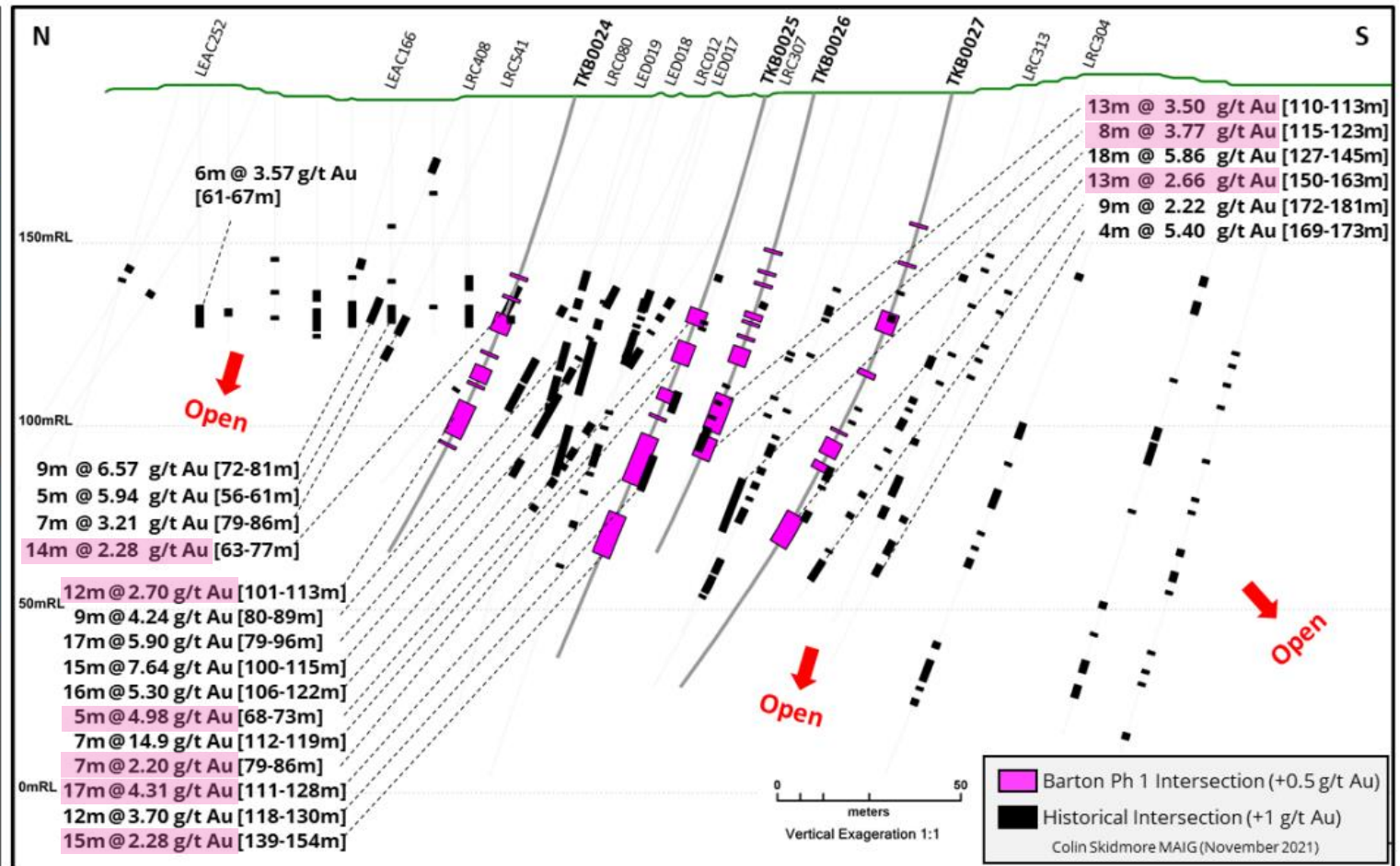
Tunkillia Central 223 Deposit

Barton Gold

Validating the High Grade (+2g/t Au) Domaining¹



Tunkillia Central Area 223 Significant Intersections²



Tunkillia Central Area 223 Long Section with Significant Intersections²

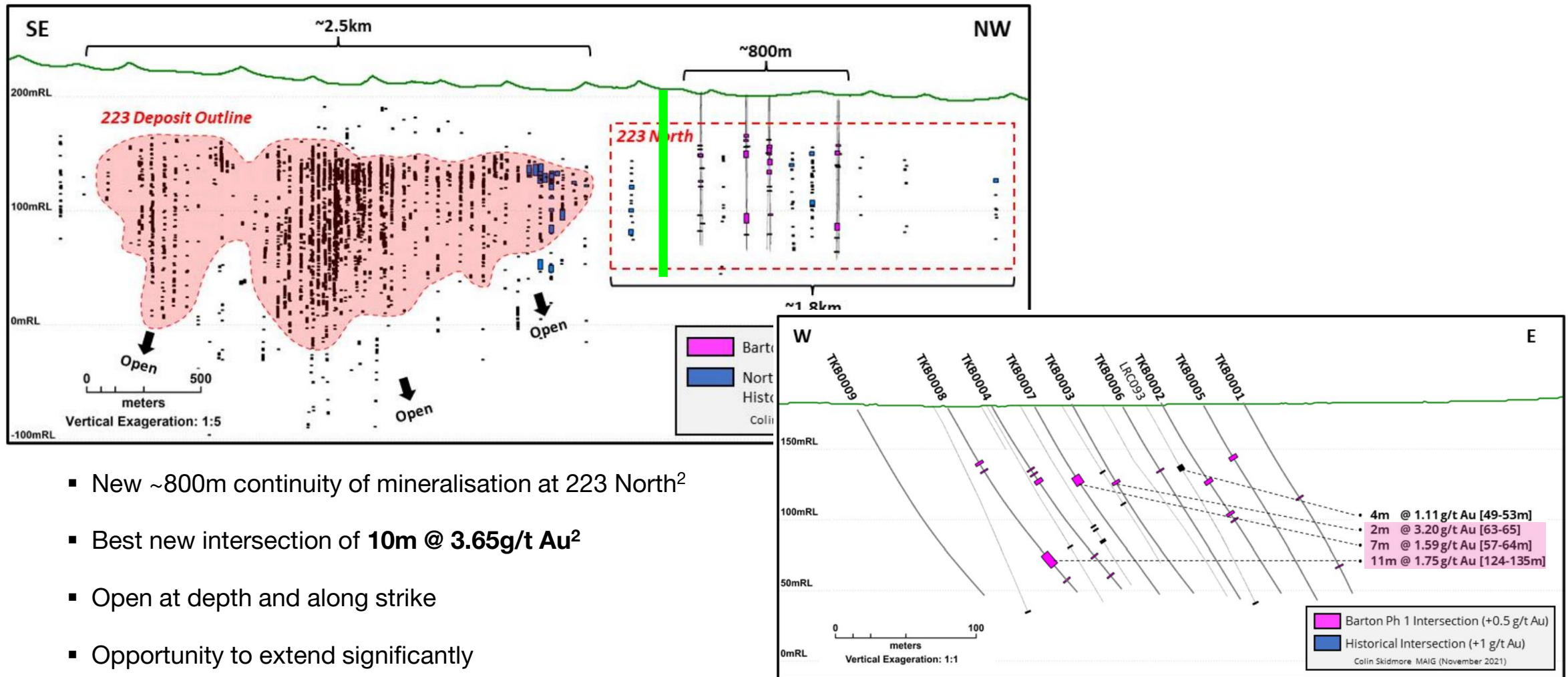
¹ Refer to Prospectus

² Refer to Barton ASX announcement dated 15 November 2021

Tunkillia 223 North

Barton Gold

Shallow and Open - Potential for Depth and Strike Additions^{1,2}



- New ~800m continuity of mineralisation at 223 North²
- Best new intersection of **10m @ 3.65g/t Au²**
- Open at depth and along strike
- Opportunity to extend significantly

¹ Note - Intersection cutoff grades 0.5 g/t Au (Barton Phase 1 drilling) and 1.0 g/t Au (historical drilling). Intersection lengths are not true widths.

¹ Refer to Prospectus

² Refer to Barton ASX announcement dated 3 November 2021

Peer Comparison Data Sources

All Data Sourced from Company Materials Published on ASX Platform

Company:	Astral Resources	Kairos Minerals	Saturn Metals	Apollo Consolidated	Barton Gold	Kin Mining	Ausgold Limited	De Grey Mining
ASX Code:	AAR	KAI	STN	AOP	BGD	KIN	AUC	DEG
Project:	Mandilla	Pilbara	Apollo Hill	Lake Rebecca	Tarcoola / Tunkilla	Cardinia	Katanning	Mallina
Location:	WA	WA	WA	WA	Central SA	WA	WA	WA
Stage:	Exploration	Exploration	Exploration	Scoping	Exploration	PFS	Scoping	Scoping
Ownership:	100%	100%	100%	100%	100%	100%	100%	100%
Enterprise Value Inputs:								
# Shares	2021.12.31 ASXR	2022.01.20 ASXR	2021.12.07 ASXR	2021 AR	2021 AR	2021.11.12 ASXR	2022.05.02 ASXR	2022.03.15 ASXR
Market Price	CommSec	CommSec	CommSec	CommSec	CommSec	CommSec	CommSec	CommSec
Market Price Date	18-May-22	18-May-22	18-May-22	2021.11.25	18-May-22	18-May-22	18-May-22	18-May-22
Cash	2022.03.31 QCF	2022.03.31 QCF	2022.03.31 QCF	2021.09.30 QCF	2022.03.31 QCF	2022.03.31 QCF	2022.03.31 QCF	2022.03.31 QCF
Liabilities	2021.12.31 HYR	2021.12.31 HYR	2021.12.31 HYR	2021 AR	2021.12.31 HYR	2021.12.31 HYR	2021.12.31 HYR	2021.12.31 HYR
Mineral Resources Data:								
Measured (Mt)	0.000	0.000	0.000	0.000	0.000	0.800	6.590	4.710
Grade Au	0.00	0.00	0.00	0.00	0.00	1.16	1.65	1.70
koz Au	0	0	0	0	0	30	349	265
Indicated (Mt)	12.285	8.565	41.000	19.200	17.700	16.700	21.970	79.790
Grade Au	1.06	1.33	0.58	1.30	1.20	1.43	1.19	1.40
koz Au	427	366	760	815	669	770	841	3,565
Inferred (Mt)	14.572	12.264	35.000	9.900	10.970	13.600	17.580	145.300
Grade Au	1.00	1.28	0.62	0.90	1.20	1.09	1.14	1.10
koz Au	473	507	710	290	439	474	647	5,138
Total (Mt)	26.86	20.93	76.00	29.10	28.68	31.10	46.14	229.80
Grade Au	1.03	1.30	0.60	1.20	1.20	1.27	1.24	1.20
koz Au	900	873	1,469	1,105	1,108	1,275	1,837	8,969
Source:	2022.01.18, 2019.04.08 ASXRs	2021.11.25 ASXR	2022.05.02 ASXR	2021.08 CP	2021.09.30 QAR	2021.10.14 CP	2021.12.07 ASXR	2021.12.31 QAR
Other Data & Sources:	Co Website	Co Website	Co Website	Co Website	Co Website	Co Website	Co Website	Co Website
Other Notes:	Figures subject to rounding AR = Annual Report HYR = Half Year Report ASXR = ASX Release CP = Company Presentation				QAR = Quarterly Activities Report QCF = Appendix 5B Quarterly Cashflow Report EV = Enterprise Value EV = Market Cap + Liabilities / Borrowings (incl Leasing Liabilities) + Derivative Liabilities (if applicable) - Cash + Trade & Other Payables (as working capital adjustment to Cash)			

JORC (2012) Mineral Resources¹

Barton Gold

Project	Zone	Indicated			Inferred			TOTAL		
		MT	g/t Au	koz Au	MT	g/t Au	koz Au	MT	g/t Au	koz Au
Tunkilla*	Oxide Zone	4.8	1.27	195	1.7	0.92	50	6.5	1.17	245
(100%)	FreshZone	12.7	1.14	465	6.9	1.15	255	19.6	1.14	720
	Sub-Total	17.5	1.17	660	8.6	1.11	305	26.1	1.15	965
Tarcoola*	Perseverance Pit	0.07	1.7	3.8	0.07	1.1	2.4	0.14	1.4	6.2
(100%)	Low Grade Stockpile - Oxide	--	--	--	0.17	1.2	6.9	0.17	1.2	6.9
	Low Grade Stockpile - Fresh	--	--	--	0.06	1.4	2.7	0.06	1.4	2.7
	Sub-Total	0.07	1.7	3.8	0.30	1.2	12.0	0.37	1.3	15.8
Challenger*	Above 215 RL Fault	--	--	--	0.32	4.1	42.6	0.32	4.1	42.6
(100%)	Challenger Deeps (below 90m RL)	--	--	--	0.21	3.5	23.0	0.21	3.5	23.0
	Sub-Total	--	--	--	0.53	3.9	65.6	0.53	3.9	65.6
WGCJV**	Golf Bore	0.6	1.0	18	3.2	1.0	100	3.8	1.0	119
(~19-21%)	Campfire Bore	--	--	--	2.8	1.2	109	2.8	1.2	109
	Greenwood	0.1	1.4	7	0.8	1.6	39	0.9	1.6	46
	Monsoon	--	--	--	0.6	0.8	17	0.6	0.8	17
	Typhoon	--	--	--	0.3	1.9	16	0.3	1.9	16
	Mainwood	--	--	--	0.4	1.1	12	0.4	1.1	12
	Sub-Total	0.7	1.1	25	7.99	1.1	294	8.7	1.1	319
TOTAL ATTRIBUTABLE		17.7	1.2	669	10.97	1.2	439	28.68	1.20	1,108

▪ Table shows complete Mineral Resources Estimate (MRE) for each Project on a 100% basis, with Barton's ownership interest indicated for each Project

▪ Total Attributable 1,108koz Au reflects Barton aggregate pro-rata ownership of Project MREs

*Figures subject to rounding; tonnages are dry-metric tonnes; all Mineral Resources classified as 'inferred' are approximate; cut-off grades applied are 0.4 g/t Au (Tunkillia), 0.4 g/t Au (Tarcoola), 2.0 g/t Au (Challenger), 0.5 g/t Au (WGCJV). ^ WGCJV: Barton has a present gold rights interest of 21.16% in Monsoon and Typhoon and 19.04% in Golf Bore, Campfire Bore, Greenwood and Mainwood.

For clarification and the avoidance of doubt, pursuant to the current terms of the WGCJV and the All Minerals JV, the Company has a present gold rights interest of 21.16% in the Monsoon and Typhoon deposits, and 19.04% in the Golf Bore, Campfire Bore, Greenwood and Mainwood deposits. Accordingly, the Company's approximate attributable Mineral Resources inventory from the WGCJV is 61,400 ounces Au.

¹ Refer to Prospectus and Barton ASX Announcement dated 14 October 2021 for further details of Barton's attributable JORC (2012) Mineral Resources Inventory

Competent Persons Statements

The information relating to Exploration Results and Mineral Resources in this presentation is extracted from the Company's Prospectus dated 14 May 2021 (**Prospectus**) and Barton ASX announcements dated 29 September, 20 October, 27 October, 3 November, 8 November and 15 November 2021. A copy of the Prospectus is available for download at www.bartongold.com.au or www.asx.com.au. The Company confirms that it is not aware of any new information or data that materially affects the Exploration Results and Mineral Resource information included in the Prospectus and, in the case of estimates of Mineral Resources, that all material assumptions and technical parameters underpinning the estimates in the Prospectus continue to apply and have not materially changed. The Company confirms that the form and context in which the applicable Competent Persons' findings are presented have not been materially modified from the Prospectus.

Competent Persons (Tarcoola)

The information in this presentation that relates to the estimate of Mineral Resources for the Tarcoola Gold Project is based upon, and fairly represents, information and supporting documentation compiled by Dr Andrew Fowler MAusIMM CP (Geo). Dr Fowler is an employee of Mining Plus Pty Ltd and has acted as an independent consultant on Barton Gold's Tarcoola Gold Project, South Australia. Dr Fowler is a Member of the Australian Institute of Mining and Metallurgy (AusIMM) and has sufficient experience with the style of mineralisation, the deposit type under consideration and to the activity being undertaken, to qualify as a Competent Person as defined in the 2012 Edition of the "Australasian Code for Reporting of Exploration Results, Mineral Resources and Ore Reserves" (The JORC Code).

The information in this presentation that relates to Exploration Results for the Tarcoola Gold Project prior to 15 November 2021 (including drilling, sampling, geophysical surveys and geological interpretation) is based upon, and fairly represents, information and supporting documentation compiled by Mr Colin Skidmore BSc Hons (Geology) MAppSc. Mr Skidmore is an employee of Mining Plus Pty Ltd and has acted as an independent consultant on Barton Gold's Tarcoola Gold Project, South Australia. Mr Skidmore is a Member of the Australian Institute of Geoscientists (AIG Member 05415)) and has sufficient experience with the style of mineralisation, the deposit type under consideration and to the activity being undertaken, to qualify as a Competent Person as defined in the 2012 Edition of the "Australasian Code for Reporting of Exploration Results, Mineral Resources and Ore Reserves" (The JORC Code).

The information in this announcement that relates to new Exploration Results for the Tarcoola Gold Project after 15 November 2021 (including drilling, sampling, geophysical surveys and geological interpretation) is based upon, and fairly represents, information and supporting documentation compiled by Mr Marc Twining BSc Hons (Geology). Mr Twining is a full-time employee of Barton Gold Holdings Ltd, and is a Member of the Australasian Institute of Mining & Metallurgy (AusIMM Member 112811) and has sufficient experience with the style of mineralisation, the deposit types under consideration and to the activity being undertaken, to qualify as a Competent Person as defined in the 2012 Edition of the "Australasian Code for Reporting of Exploration Results, Mineral Resources and Ore Reserves" (The JORC Code).

Competent Person (Tunkillia)

The information in this presentation that relates to the estimate of Mineral Resources for the Tunkillia Gold Project including drilling, sampling and geological interpretation is based upon, and fairly represents, information and supporting documentation compiled by Dr Andrew Fowler MAusIMM CP (Geo). Dr Fowler is an employee of Mining Plus Pty Ltd and has acted as an independent consultant on Barton Gold's Tunkillia Gold Project, South Australia. Dr Fowler is a Member of the Australian Institute of Mining and Metallurgy (AusIMM) and has sufficient experience with the style of mineralisation, the deposit type under consideration and to the activity being undertaken, to qualify as a Competent Person as defined in the 2012 Edition of the "Australasian Code for Reporting of Exploration Results, Mineral Resources and Ore Reserves" (The JORC Code).

The information in this presentation that relates to Exploration Results for the Tunkillia Gold Project (including drilling, sampling, geophysical surveys and geological interpretation) is based upon, and fairly represents, information and supporting documentation compiled by Mr Colin Skidmore BSc Hons (Geology) MAppSc. Mr Skidmore is an employee of Mining Plus Pty Ltd and has acted as an independent consultant on Barton Gold's Tunkillia Gold Project, South Australia. Mr Skidmore is a Member of the Australian Institute of Geoscientists (AIG Member 05415)) and has sufficient experience with the style of mineralisation, the deposit type under consideration and to the activity being undertaken, to qualify as a Competent Person as defined in the 2012 Edition of the "Australasian Code for Reporting of Exploration Results, Mineral Resources and Ore Reserves" (The JORC Code).

Competent Person (Challenger)

The information in this presentation that relates to the estimate of Mineral Resources for the Challenger Mine is based upon, and fairly represents, information and supporting documentation compiled by Mr Dale Sims, a Competent Person, who is a Chartered Professional Fellow of the Australasian Institute of Mining and Metallurgy (AusIMM) and a Member of the Australian Institute of Geoscientists (AIG). Mr Sims is the principal of Dale Sims Consulting Pty Ltd and an independent consultant engaged by Barton Gold for this work and has sufficient experience that is relevant to the style of mineralisation and type of deposit under consideration and to the activity being undertaken to qualify as Competent Person as defined in the 2012 edition of the "Australasian Code for Reporting of Exploration Results, Mineral Resources and Ore Reserves" (The JORC Code).

Competent Person (Western Gawler Craton Joint Venture)

The information in this presentation that relates to Exploration Results and the estimate of Mineral Resources for the Western Gawler Craton Joint Venture is based upon, and fairly represents, information and supporting documentation compiled by Mr Richard Maddocks who is a Fellow of the Australasian Institute of Mining and Metallurgy (AusIMM). Mr Maddocks is an independent consultant geologist with Auranmore Consulting who prepared the information, and has sufficient experience that is relevant to the style of mineralisation and type of deposit under consideration and to the activity being undertaken to qualify as a Competent Person as defined in the December 2012 edition of the "Australasian Code for Reporting of Exploration Results, Mineral Resource and Ore Reserves" (the JORC Code).