



3 JUN 2022

ASX ANNOUNCEMENT

ASX: TMG

Investor Presentation

Trigg Mining Limited (**ASX: TMG**) (**Trigg** or the **Company**) is pleased to announce its participation in the Resources Rising Stars Mining Investor Conference, to be held Tuesday 7th June 2022 at 11:45am AEDT / 9:45AM AWST.

Managing Director and CEO Keren Paterson will provide an overview of the Company which is developing the Lake Throssell Sulphate of Potash (SOP) Project in Western Australia. The project hosts a large SOP mineral resource with the potential to support a globally significant operation.

The conference can be viewed live and will provide viewers the opportunity to hear from a range of ASX-listed leading micro/mid cap companies.

To access further details of the event and to register at no cost, please copy and paste the following link into your internet browser [HTTPS://WWW.RRSINVESTOR.COM/SITE/CONTENT/](https://www.rrsinvestor.com/site/content/)

A copy of the investor presentation to be delivered during the conference is attached.

This announcement was authorised to be given to ASX by the Board of Directors of Trigg Mining Limited.

Keren Paterson
Managing Director & CEO
Trigg Mining Limited

For more information please contact:

Keren Paterson
Managing Director & CEO
[Trigg Mining Limited](#)
(08) 6114 5685
info@triggmining.com.au

Nicholas Read
Investor & Media Relations
[Read Corporate](#)
(08) 9388 1474
nicholas@readcorporate.com.au



ASX : TMG

#mining4farmers

Trigg Mining

Developing a global top 10 sulphate of potash project in Western Australia

Resources Rising Stars

RACV Royal Pines Gold Coast

7 June 2022

Sustainable Mining for Sustainable Agriculture

DISCLOSURES AND DISCLAIMERS

This presentation (**Presentation**) is for informational purposes only and is not a prospectus, disclosure document or offer document under the Corporations Act 2001 (Cth) (**Corporations Act**) or any other law. This Presentation does not constitute, and is not to be construed as, an offer to issue or sell, or a solicitation of an offer or an invitation to subscribe for, buy or sell securities in Trigg Mining Limited ACN 168 269 752 (ASX:TMG) (**Trigg** or the **Company**). The material contained in this Presentation is of general information about the activities of the Company current as at the date of this Presentation. It is provided as a summary and does not purport to be complete.

To the extent permitted by law, no responsibility for any loss arising in any way (including by way of negligence) from anyone acting or refraining from acting as a result of this material is accepted by the Company, including any of its related bodies corporate. This Presentation is not a financial product and does not consider the investment objectives, taxation situation, financial situation or needs of individuals. You should not rely upon it as advice for investment purposes, as it does not take into account your investment objectives, financial position or needs. These factors should be considered, with or without professional advice, when deciding if an investment is appropriate.

Cautionary Statement

The Scoping Study referred to in this is Presentation is based on the Scoping Study released by Trigg to ASX on 05 October 2021 titled “Positive Scoping Study for Lake Throssell Sulphate of Potash Project following Mineral Resource Upgrade”(Scoping Study Announcement).

The Company advises the Scoping Study referred to in this Presentation has been undertaken to determine the potential viability of the Lake Throssell Sulphate of Potash Project (the **Project**) in Western Australia. The Scoping Study is a preliminary assessment based on low accuracy technical and economic assessments ($\pm 25\text{-}35\%$ Class 5). It is insufficient to support the estimation of Ore Reserves or to provide assurance of an economic development case at this stage, or to provide certainty that the conclusions of the Scoping Study will be realised. Further exploration and evaluation work and appropriate studies are required before the Company will be able to estimate any Ore Reserves or to provide any assurance of an economic development case.

The Scoping Study is based on the material assumptions outlined in the Scoping Study announcement. These include assumptions about the availability of funding. While the Company considers all of the material assumptions to be based on reasonable grounds, there is no certainty that they will prove to be correct or that the range of outcomes indicated by the Scoping Study will be achieved.

The Inferred and Indicated Mineral Resource estimate underpinning the production target was prepared by a competent person in accordance the JORC Code (2012). Over the payback period 82% of the production target is sourced from Indicated and 18% from Inferred Drainable Mineral Resources. Over the life of mine 70% of the production target is derived from Indicated Drainable Resources and 41% of the Total Drainable Mineral Resource estimate is scheduled over the life of mine. The inclusion of the Inferred Drainable Mineral Resource in the production target does not impact technical or financial viability. There is a low level of geological confidence associated with Inferred Mineral Resources and there is no certainty that further exploration work will result in the determination of Measured or Indicated Mineral Resources or that the Production Target or preliminary economic assessment will be realised.

To achieve the range of outcomes indicated in the Study, funding for capital and working capital requirements in the order of \$412 million will likely be required. Investors should note that there is no certainty that the Company will be able to raise that amount of funding when needed. It is also possible that such funding may only be available on terms that may be dilutive to or otherwise affect the value of Trigg’s existing shares. It is also possible that Trigg could pursue other ‘value realisation’ strategies such as a sale, partial sale or joint venture of the Project. If it does, this could materially reduce Trigg’s proportionate ownership of the Project.

The Scoping Study results contained in this Presentation relate solely to the Project and does not include Exploration Targets or Mineral Resources defined elsewhere. The Company has concluded it has a reasonable basis for providing the forward-looking statements included in this Presentation.

The Project will need environmental approvals and the grant of a mining lease. Although the Company currently sees no impediment to acquiring these, there is no guarantee that the Company will be able to obtain these or obtain them within the timeframe proposed in the Project development schedule. Given the uncertainties involved, investors should not make any investment decision based solely on the results of the Scoping Study.



DISCLOSURES AND DISCLAIMERS cont.

Forward Looking Statements

This Presentation contains 'forward-looking statements' that are based on TMG's expectations, estimates and projections as of the date on which the statements were made. These forward-looking statements include, among other things, statements with respect to prefeasibility and definitive feasibility studies, TMG's business strategy, plans, development, objectives, performance, outlook, growth, cash flow, projections, targets and expectations, mineral reserves and resources, results of exploration and related expenses. Generally, this forward-looking information can be identified by the use of forward-looking terminology such as 'outlook', 'anticipate', 'project', 'target', 'potential', 'likely', 'believe', 'estimate', 'expect', 'intend', 'may', 'would', 'could', 'should', 'scheduled', 'will', 'plan', 'forecast', 'evolve' and similar expressions. Persons reading this Presentation are cautioned that such statements are only predictions, and that TMG's actual future results or performance may be materially different. Forward-looking statements are subject to known and unknown risks, uncertainties and other factors that may cause TMG's actual results, level of activity, performance or achievements to be materially different from those expressed or implied by such forward-looking information. Forward-looking information is developed based on assumptions about such risks, uncertainties and other factors set out herein, including but not limited to the risk factors set out in the Scoping Study Announcement. The forward-looking statements included in this document speak only as of the date of this Presentation. Except where required by law or the ASX Listing Rules, the Company doesn't intend to update or revise the forward-looking statements in this Presentation in the future.

Key Assumptions

Average LOM AUD/USD exchange rate of 0.73, SOP Price of US\$550/t LOM, State Government Royalty of \$0.73/t and 8% discount rate. All dollar values are in Australian dollars (A\$ or AUD) unless otherwise stated. Figures, amounts, percentages, estimates, calculations of value and other factors used in his presentation are subject to the effect of rounding.

Following the release of the Scoping Study announcement the Western Australian Government announced on 12 May 2022 a royalty for SOP of 5%. This increases the State Government Royalty to \$38/t (based on US\$550/t) and has a negative \$71M impact on the Project's NPV.

Competent Person Statement

The Mineral Resource Estimate was first announced, together with a Competent Person's Statement from Mr Adam Lloyd of Aquifer Resources Pty Ltd, on 05 October 2021 in the announcement titled "Positive Scoping Study for Lake Throssell Sulphate of Potash Project following Mineral Resource Upgrade" and for information referring to the exploration results at Lake Yeo in this document, refer to announcement dated, 21/03/22. The Company confirms that it is not aware of any new information or data that materially affects the information included in the original market announcement and, in the case of estimates of Mineral Resources, Exploration Target or Ore Reserves that all material assumptions and technical parameters underpinning the estimates in the relevant market announcement continue to apply and have not materially changed. The Company confirms that the form and context in which the Competent Person's findings are presented have not been materially modified from the original market announcements; and that the information in the announcement relating to exploration results is based upon, and fairly represents the information and supporting documentation prepared by the named Competent Persons.

Production Targets and Financial Forecasts

The production target was first announced on 05 October 2021 in the announcement titled "Positive Scoping Study for Lake Throssell Sulphate of Potash Project following Mineral Resource Upgrade". The Company confirms that it is not aware of any new information or data that materially affects the assumptions underpinning the production target or the forecast financial information derived from the production target.



Acceptance

By attending an investor presentation or briefing, accessing or reviewing this document you acknowledge and agree to the "Disclosure and Disclaimers" set out above.

GLOBAL FOOD SECURITY

- **Growing world population** – almost 8 billion people, increasing to 8.6 billion by 2030
- **Changing demographics** – increasing demand for higher nutrient food
- **Increasing urbanisation** - reducing areas of arable land
 - Need higher yields
(or more from less)
- **Geopolitics** - supply disruptions and distortions in fertiliser supply



PLANT NUTRITION 101

PLANTS NEED: sun, water, carbon, oxygen & growing medium

+ MACRO NUTRIENTS – NPK + S:

N - Nitrogen: urea (from natural gas)

P - Phosphorus: phosphate rock

K - Potassium: potash – muriate/sulphate of potash

S – Sulphur: sulphate

Plus a variety of trace elements, such as
Calcium (Ca)
Magnesium (Mg)
Zinc (Zn)
Iron (Fe)

Mineral fertilisers
account for 40-60%
of the world's food
supply



Liebig's Law of Minimum: Yield is dictated by the scarcest nutrient available

SULPHATE OF POTASH: contains 2 of the 4 Macro Nutrients

WHY SULPHATE OF POTASH?

SULPHATE OF POTASH (K_2SO_4) - SOP

Potassium Sulphate contains only nutrients the plants need. It is a niche, inelastic, essential and efficient fertiliser necessary for high-value, chloride sensitive crops such as fruit, vegetables, avocados, coffee beans, grapes, tree nuts, cocoa, anything grown under glass and in arid and acidic soils.

MURIATE OF POTASH (KCl) - MOP

Potassium Chloride is a more abundant source of potash, BUT it contains almost 50% chloride which is detrimental to chloride-sensitive crops and arid soils. It contributes to salinity and acidity of soils.

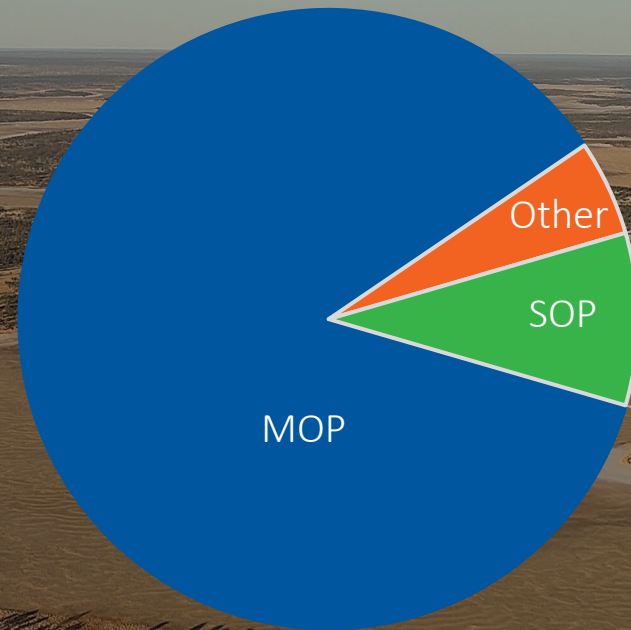


POTASH MARKET

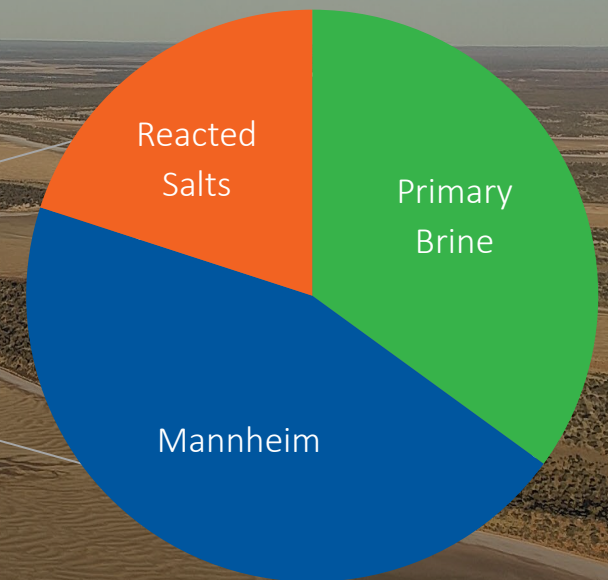
SULPHATE OF POTASH

- 35% comes from primary sources and is constrained - very few natural deposits
 - Remainder from secondary processes
 - Energy intensive
 - Resource intensive
 - Acid waste product
- Primary SOP is the premium potassium fertiliser from an Environmental Stewardship perspective

TOTAL POTASH MARKET
2021 - 80 Mt | 2036F – 100 Mt



SOP MARKET
2021 - 7 Mt | 2036F - 9 Mt



Mannheim process – MOP (KCl) + sulphuric acid (H_2SO_4), heated to $\sim 800^\circ\text{C}$. Produces 1.2t Hydrochloric acid (HCl) for each tonne of SOP (K_2SO_4). Mannheim product is needed to meet global demand which creates an industry price floor well-above the cost of brine sources.

Sources: Argus Potash, CRU

TIER 1 LOCATION

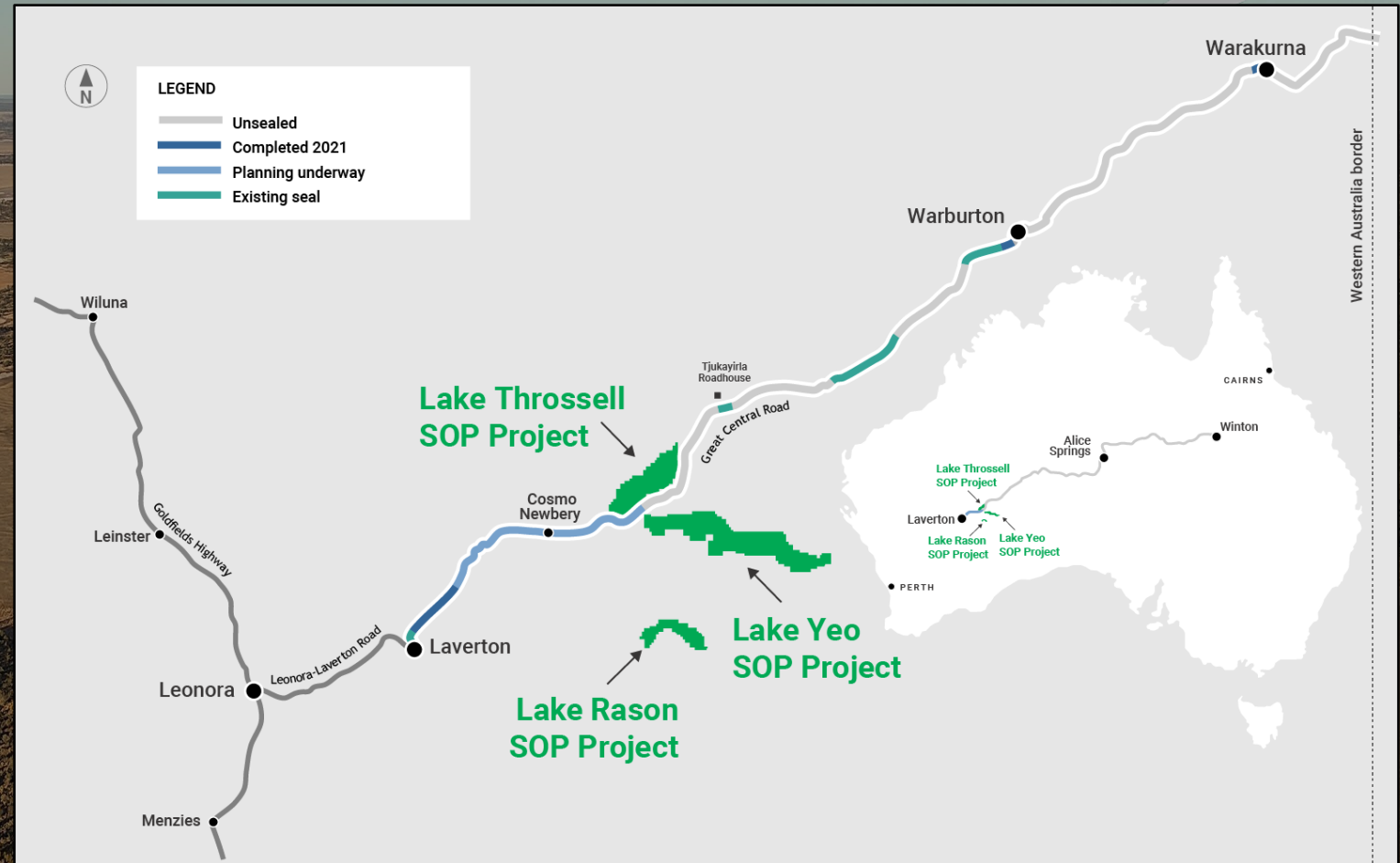
THREE 100% OWNED SOP PROJECTS

- Eastern Goldfields of Western Australia
- From ~170km east of Laverton covering approximately 3,400km²

EXCELLENT TRANSPORT LOGISTICS

- Great Central Road undergoing upgrade to become Outback Highway
 - 350km bitumen to Leonora¹
 - 900km rail to Fremantle

1. Trigg anticipates the sealing of the Throssell section of the Outback Way Highway will be completed prior to first production.



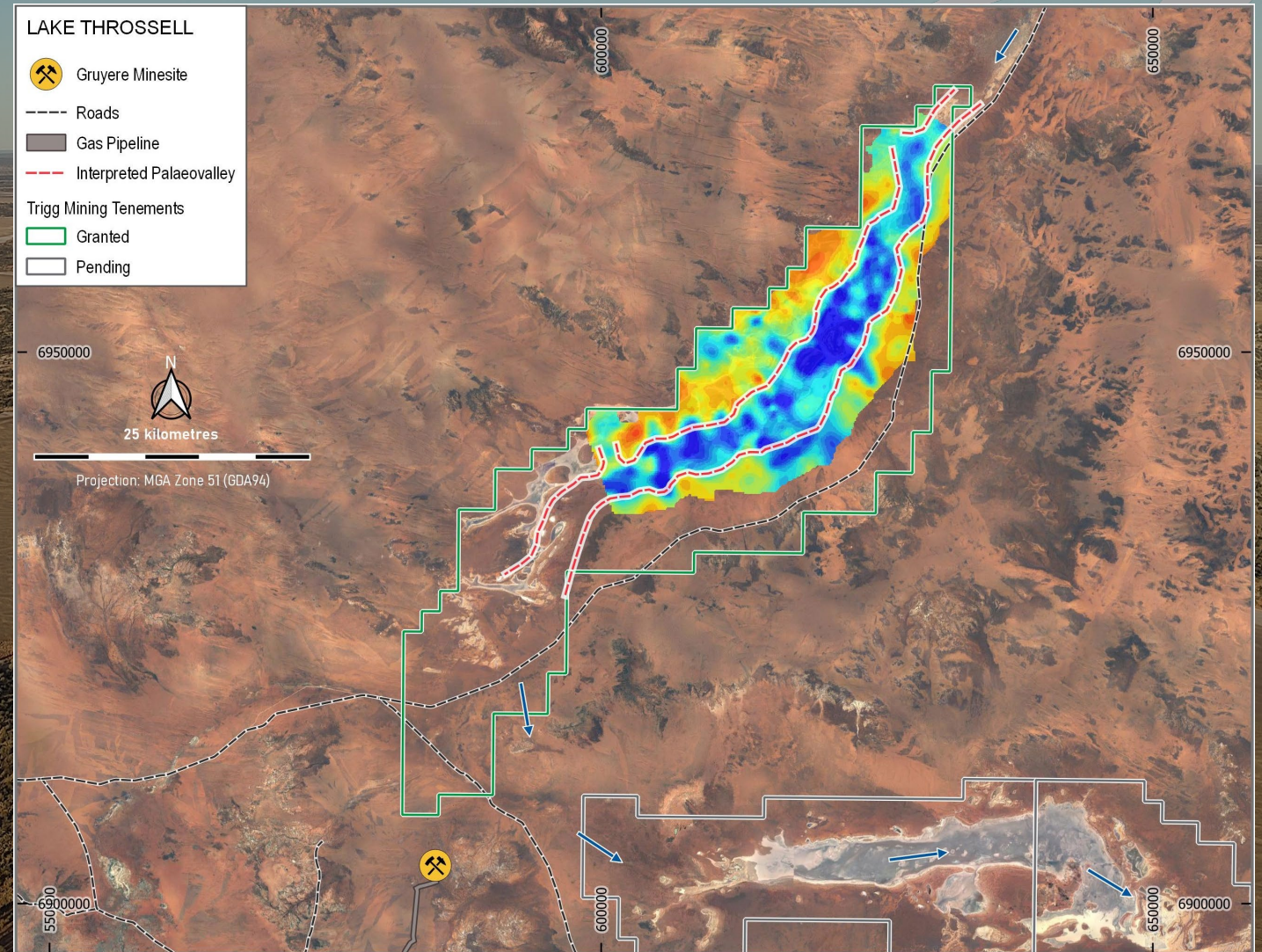
Project Locations and the sealing of the Outback Way Highway progress

LAKE THROSSELL

LARGE, HIGH-GRADE DISCOVERY

- 2021 SCOPING STUDY¹
 - 245,000 tpa SOP for initial life of 21 years (41% of Mineral Resource)
 - Potential top 10 global producer
 - C1 cash cost – US\$249/t
 - AISC - \$US272/t
- EXPLORATION UPSIDE
 - Deposit is open along strike - in both directions
 - 36km drilled - 34km under granted tenure yet to be drilled

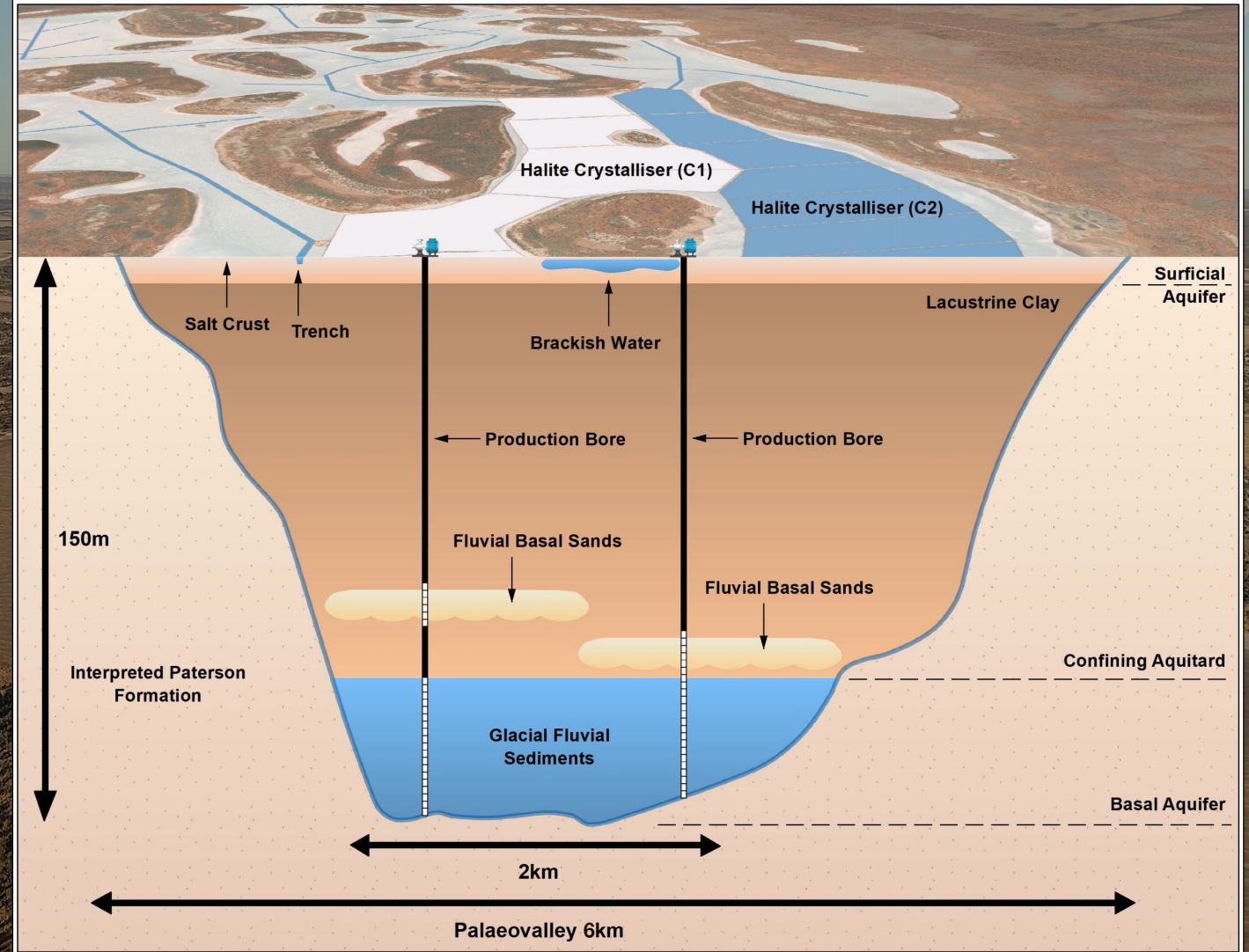
1. See section titled Disclosures and Disclaimers



LAKE THROSSELL

PRODUCTION

- Bores and trenches harvesting the drainable brine followed by solar evaporation, crystallisation and purification
- Producing a low carbon source of essential SOP



LAKE THROSSELL

PRE-FEASIBILITY WORKSTREAMS

- OPTIMISE NATURAL ENDOWMENT
 - Brine – water, sulphate, magnesium & potassium
 - Climate - sun & wind
- PROCESSING PATHWAYS
 - Sighter test in preparation for bulk evaporation trial
 - Reviewing alternative pathways to reduce residence time in ponds
- ENVIRONMENTAL STEWARDSHIP
 - Minimise footprint and waste
 - Maximise recovery
- RESOURCE DEFINITION
 - Air-core drilling & water bores to pump-test basal aquifer
- PROJECT APPROVALS
 - Environmental baseline studies

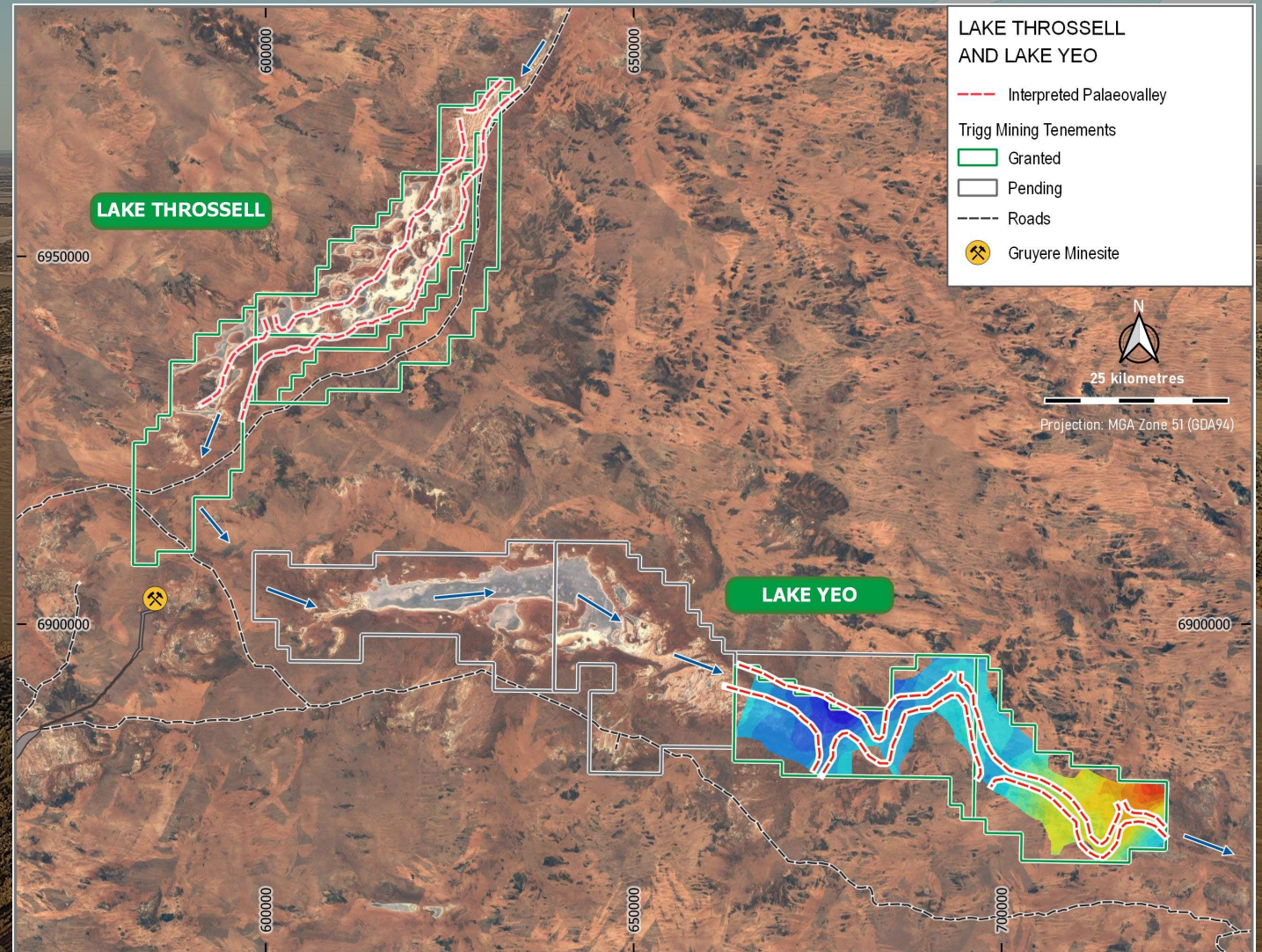


Sighter evaporation trial set-up (LHS) and sample of potassium-rich salts (RHS)

LAKE YEO EXPLORATION

POTENTIAL LAKE THROSSELL REPEAT

- From 35km to the south of Lake Throssell in the same interpreted palaeovalley
- Gravity survey identified an 80km long palaeovalley, up to 3.5km wide within the granted tenements
- Planning underway for a heritage survey and air-core drilling program to drill test



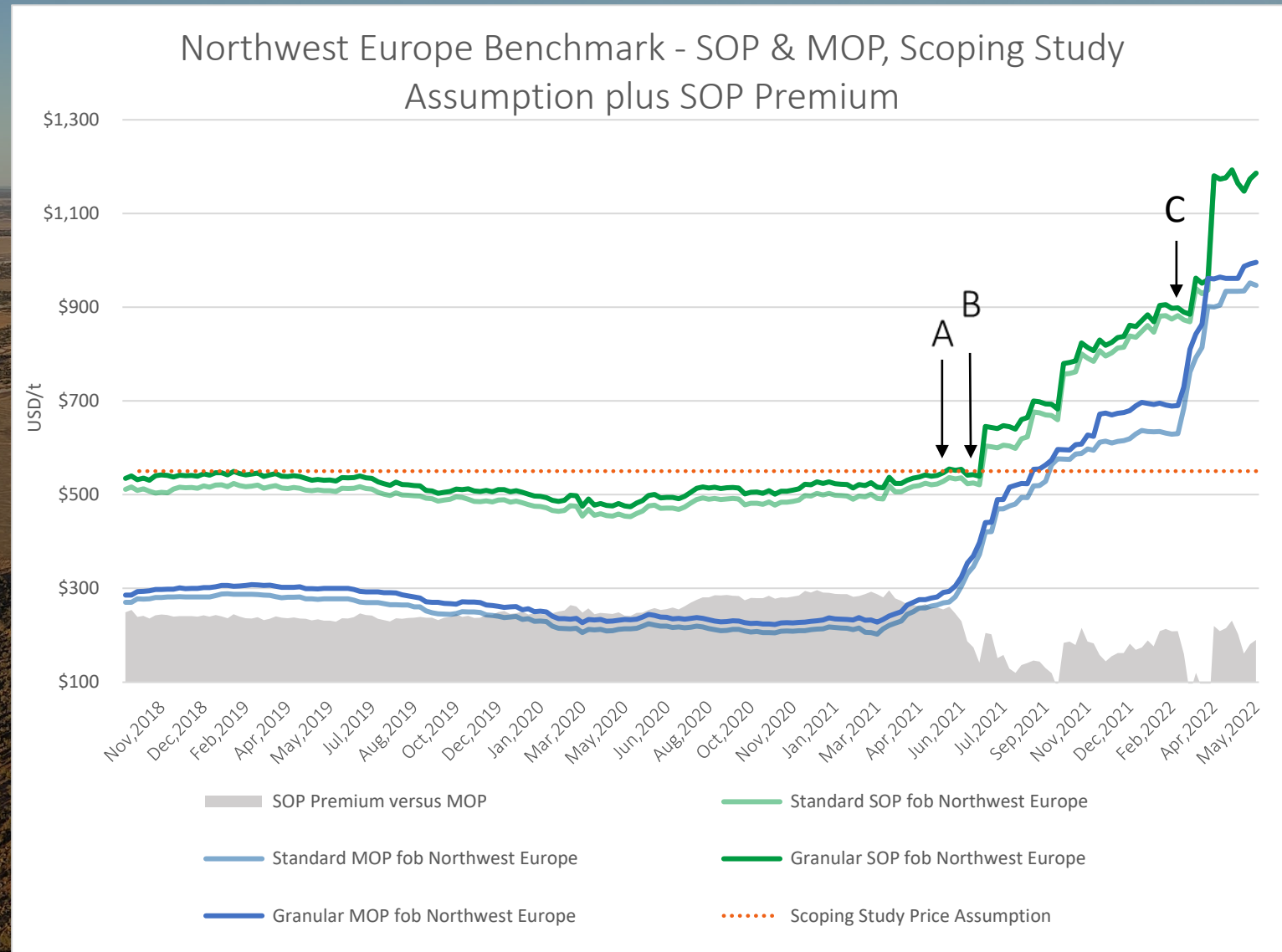
RAPIDLY RISING PRICES

DUE TO

- Strong global demand
- High raw material costs
- Trade sanctions
(A – EU sanctioned Belarus MOP)
- Domestic policies
(B – China restricts fertiliser exports to protect domestic agriculture)
- Increased geo-political risk
(C – Russia invaded Ukraine)

SCOPING STUDY

- Price assumption – USD550/t
- Current benchmark – USD1,180/t
- Scoping study economics most sensitive to increase in price



Source: Argus Media – Potash (26/05/2022)

GEOPOLITICS

IMPACTS ON POTASH MARKETS

- Russia, Belarus and China account for ~50% of global potash trade (MOP + SOP)
- China alone accounts for two-thirds of the world's SOP production
- Canada is only other source of significant MOP – 20% of global supply
 - Rail near capacity will restrict supply increase

AUSTRALIA

- Relies solely on imports of potash for our agricultural output

"The war in Ukraine is the biggest geopolitical disruption to hit the global fertiliser market in decades"

International Fertiliser Association

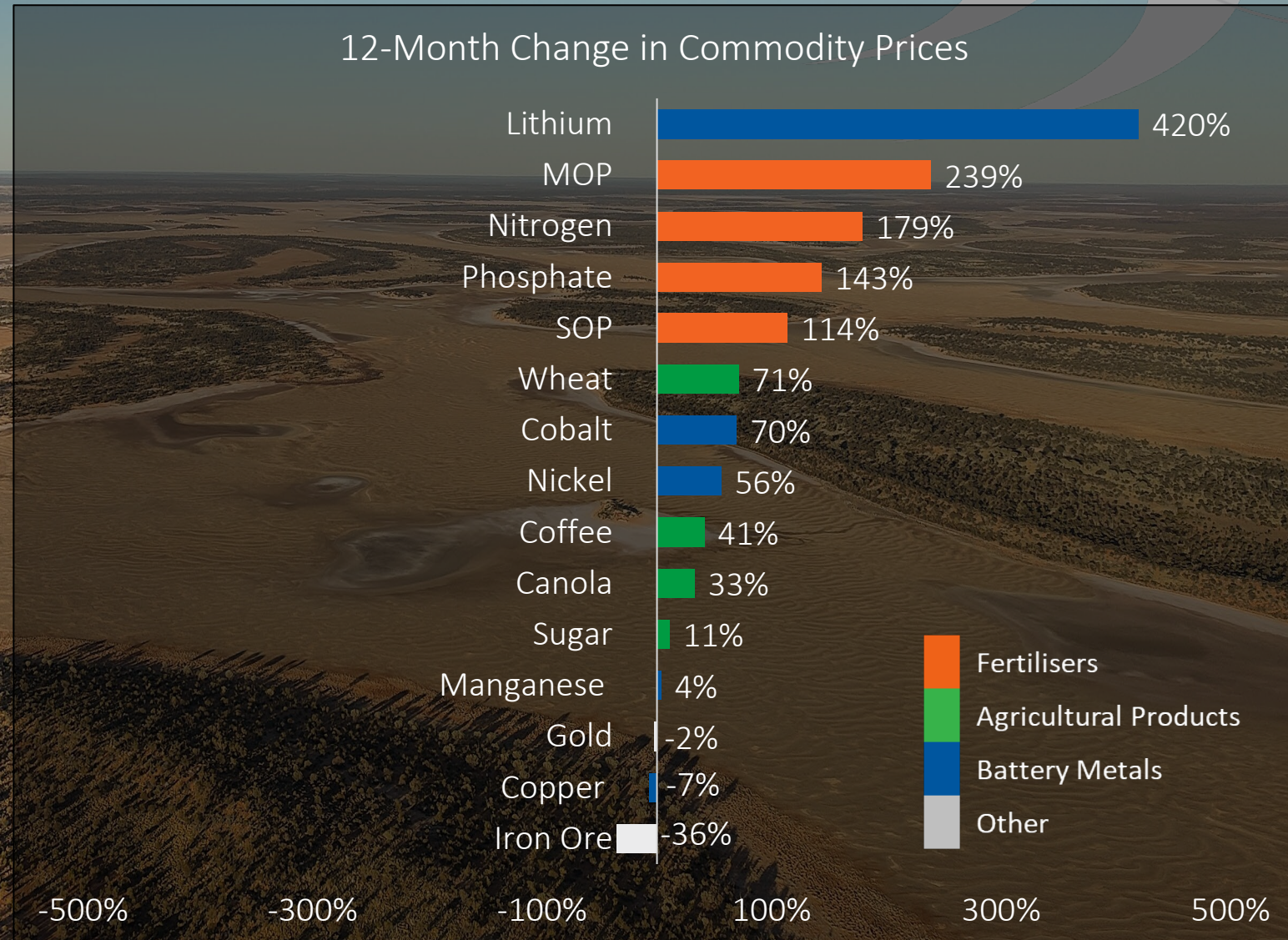
"It is time to make fertilisers essential goods..."

International Fertiliser Association



Source: Argus Potash, The Economist, International Fertiliser Association

FERTILISER PRICE BOOM



Sources: Index Mundi and Trading Economics as at 30/05/2022

LAKE THROSELL - A TRULY SUSTAINABLE NATURAL RESOURCE PROJECT

A project of local, national and global significance

ENVIRONMENT

Mining

- ✓ Harvesting naturally occurring potassium-rich brine (drainable resource only)
- ✓ No large open pit, rock waste dumps or TSF
- ✓ Harvesting solar energy through evaporation and 15-20% solar electricity generation
- ✓ Low greenhouse gas emissions - 0.17t CO₂equiv/t SOP with pre-feasibility to investigate further minimisation

Agriculture

- ✓ SOP is a high-quality, highly efficient potassium fertiliser, improving:
 - Carbon farming outcomes
 - Soil and water-way health
 - Drought tolerance of crops
 - Frost resistance of crops
 - Quality of produce
 - Nutritional benefit

SOCIAL

- ✓ Creating employment opportunities for >21 years
 - 250 construction jobs
 - 125 permanent roles (114 site-base)
- ✓ Potential for sustained community programs to deliver real and meaningful outcomes for Traditional Owners
- ✓ State & Federal taxes, Native Title and State royalty payments
- ✓ Mine closure planning – from the beginning
- ✓ Company founded by a woman and 50% of Board and senior leadership team are women

GOVERNANCE

- ✓ Transparent public reporting through ASX
- ✓ Contemporary corporate policies and risk management frameworks

Delivering on our Purpose:

to build natural resource projects communities can be proud of

THE TRIGG MINING INVESTMENT CASE



Potash is essential for global food security



Sanctions and domestic policies are disrupting half of the world's traditional potash supply



Lake Throssell set to become a top 10 global, low-cost SOP producer, a multi-decade operation



Located in a world class mining jurisdiction



Outstanding ESG credentials



Australian-made premium, natural potassium fertiliser with low green house gas emissions suitable for all agriculture



2022 field season – heritage surveys, air-core drilling, test production bores & bulk evaporation trial

CORPORATE OVERVIEW

Directors

Keren Paterson
Founder, MD & CEO

Mike Ralston
Non Executive Chairperson

Bill Bent
Non Executive Director

Maree Arnason
Independent Non Exec Director

Rod Baxter
Independent Non Exec Director

Leadership Team

CFO & Company Secretary Salina Michels

Exploration Manager Damian Fletcher

Community & Environment
Manager Jenny Cookson

Advisor - Corporate John Ciganek, Euclase Capital

Principal Hydrogeologist Adam Lloyd, Aquifer Resources

Principal Metallurgist Laurie Mann, Elmet

Capital Structure

Ordinary Shares (TMG)	170 million
Share Price (31/05/22)	\$0.09
Market Capitalisation	\$15 million
Unaudited Cash (31/03/22)	\$6 million
Enterprise Value	\$9 million

Top 10 Shareholders

Michael Ralston & Sharon Ralston <Ralston Family>	3.7%
Susetta Holdings	3.0%
Julian Stephens <One Way>	2.9%
KP Consulting Group <SSB>	2.1%
John Richard Small	1.9%
Kenneth William Vidler	1.8%
BNP Paribas Noms <DRP>	1.6%
Rock Cod Investments	1.5%
William Bent <Bent Family>	1.3%
Dostal Nominees <PGJ&D Dostal Bloodline A/C>	1.1%
Total	20.9%

APPENDIX A – TOTAL MINERAL RESOURCE ESTIMATE

Aquifer	Mineral Resource Category	Volume (10 ⁶ m ³)	Total Porosity (%)	Brine Volume (10 ⁶ m ³)	Specific Yield (%)	Drainable Brine Volume (10 ⁶ m ³)	K Grade (mg/L)	K Mass (Mt)	SO ₄ Grade (mg/L)	SO ₄ Mass (Mt)	Equivalent SOP Grade (K ₂ SO ₄) (kg/m ³)	Drainable Brine SOP Mass (Mt)	Total Brine SOP Mass (Mt)
LAKE THROSSELL MINERAL RESOURCE													
Surficial	Indicated	1,008	0.40	403	0.17	170	4,985	0.8	22,125	3.8	11.1	1.9	4.5
Basal	Indicated	1,150	0.29	329	0.19	225	4,605	1.0	24,420	5.5	10.3	2.3	3.4
Total Indicated Resource		2,159		732		395	4,770	1.9	23,430	9.3	10.6	4.2	7.9
Surficial	Inferred	3,074	0.43	1,313	0.10	310	4,605	1.4	21,910	6.8	10.3	3.2	13.5
Confining Layer	Inferred	8,793	0.45	3,957	0.04	350	4,595	1.6	23,140	8.1	10.2	3.6	40.6
Basal	Inferred	3,524	0.40	1,394	0.09	330	4,675	1.5	22,920	7.6	10.4	3.4	14.5
Total Inferred Resource		15,391		6,664		990	4,625	4.5	22,680	22.5	10.3	10.2	68.6
Total		17,550		7,396		1,385	4,666	6.4	22,894	31.8	10.4	14.4	76.5
LAKE RASON INFERRED MINERAL RESOURCE													
Surficial	Inferred	3,060	0.4	1220	0.1	306	2,290	0.70	21,400	6.55	5.10	1.56	6.23
Crete	Inferred	5,020	0.38	1910	0.07	351	2,330	0.82	20,900	7.34	5.20	1.83	9.91
Mixed	Inferred	230	0.3	70	0.1	23	2,390	0.05	21,900	0.50	5.32	0.12	0.36
Basal Sand	Inferred	1,020	0.3	310	0.21	214	2,390	0.51	22,600	4.84	5.33	1.14	1.63
Saprolite	Inferred	2,800	0.2	560	0.03	84	2,210	0.19	21,000	1.76	4.92	0.41	2.76
Saprock	Inferred	9,310	0.1	930	0.02	186	2,050	0.38	21,000	3.91	4.57	0.85	4.25
Total		21,400		4,990		1,160	2,280	2.65	21,400	24.89	5.08	5.91	25.2
TOTAL MINERAL RESOURCE		38,950		12,386		2,545	3,579	9.1	22,213	56.7	8.0	20.3	101.7
LAKE THROSSELL EXPLORATION TARGET (in addition)													
Lower Estimate		5,807				288	4,081	1.2			9.1	2.6	
Upper Estimate		10,925				945	4,466	4.2			10.0	9.4	

Note: Errors may be present due to rounding, approximately 1.2Mt of Drainable SOP Mass is present in Exploration Licence Application E38/3437. Approximately 2.86Mt of the Drainable SOP Mass is present in Exploration Licence Applications E38/3544, E38/3483, E38/3458, and E38/3537. Total porosity and total brine SOP mass is provided to compare the total SOP tonnes with the drainable Resources. As can be seen, the total brine volume of 102.53Mt is significantly higher than reported drainable brine volume of 20.2Mt. The drainable brine volume represents the amount of SOP that can be abstracted from the deposit under normal pumping conditions. For economic production, the drainable brine volume is the most important volume because only a proportion of the total brine present can be typically abstracted from the deposit. The potential quantity and grade of the Exploration Target is conceptual in nature. There has been insufficient exploration in these areas to estimate a Mineral Resource. It is uncertain if further exploration will result in the estimation of a Mineral Resource.

The Mineral Resource Estimate was first announced, together with a Competent Person's Statement from Mr Adam Lloyd of Aquifer Resources Pty Ltd, on 05 October 2021 in the announcement titled "Positive Scoping Study for Lake Throssell Sulphate of Potash Project following Mineral Resource Upgrade".



Level 1, Office E, 1139 Hay Street
West Perth, WA 6005
(08) 6114 5685

info@triggmining.com.au

www.triggmining.com.au

