



Traka Resources Limited

ABN: 63 103 323 173

8 June 2022

Company Announcements Office
ASX Limited
Level 4, 20 Bridge Street
SYDNEY NSW 2000

INVESTOR PRESENTATION

Attached is a copy of a presentation on the company's activities to be made to investors at the Resources Rising Stars Conference on 8 June 2022.

Authorised by the Board

Patrick Verbeek
Managing Director



Exploring a large gold-copper intrusive in WA's South-West

2022 RRS Conference, Gold Coast

8 June 2022 | Patrick Verbeek, Managing Director

ASX: TKL

Disclaimer



This presentation has been prepared by **Traka Resources Limited** ABN 63 103 323 173 (**Traka**) for the sole purpose of providing financial, operational and other information to enable recipients to review the business activities of Traka. This presentation is not intended as an offer, invitation, solicitation or recommendation with respect to the purchase or sale of any securities. Nothing in this presentation should be construed as financial product advice, whether personal or general, for the purposes of Section 766B of the *Corporations Act 2001*.

This presentation may contain forward looking information, statements or forecasts that are subject to risks and other factors outside the control of **Traka**. Any forward looking information, statements or forecasts provided is/are considered reasonable in the circumstances and has/have been prepared in good faith and with all due care, but may differ materially from actual future results and performance. **Traka** and its affiliates, any of its directors, agents, officers or employees do not make any representation or warranty, express or implied, as to or endorsement of the accuracy or completeness of any information, statements or forecasts contained in this presentation, and they do not accept any liability for any statements made in, or omitted from, this presentation.

This presentation should not be relied upon as a representation of any matter that an investor should consider in evaluating the business activities of **Traka**. Investors must make and rely upon their own enquiries and due diligence in relation to the subject of this presentation and an investment in **Traka**. A potential investor must assess the merits or otherwise of an investment in **Traka** having regard to their own personal, financial and other circumstances.

COMPLIANCE STATEMENT RELATING TO TRAKA'S PROJECTS

The information in this report that relates to Exploration Targets, Exploration Results, Mineral Resources or Ore Reserves is based on information compiled by Mr P Verbeek a Competent Person who is a Member of the Australasian Institute of Mining and Metallurgy and is engaged full time as the Managing Director of the Company. Mr Verbeek has sufficient experience that is relevant to the style of mineralisation and type of deposit under consideration and to the activity being undertaking to qualify as a Competent Person as defined in the 2012 Edition of the 'Australasian Code for Reporting of Exploration Results, Mineral Resources and Ore Reserves'. Mr Verbeek consents to the inclusion in the report of the matters based on his information in the form and context in which it appears.

Information included in the presentation is dated 08 June 2022

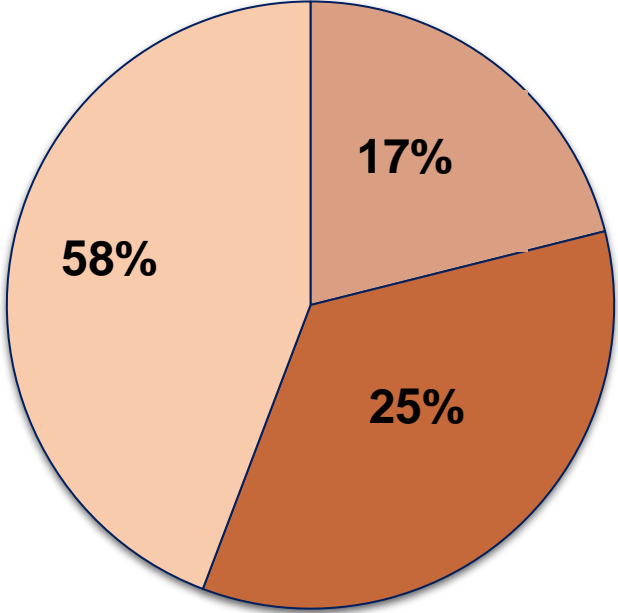


Strong Shareholder Base, Experienced Team

Total Shares on Issue	668,774m
Cash on Hand as at (May 2022)	\$800k
Market Cap @ \$0.01 per share	\$6.9m

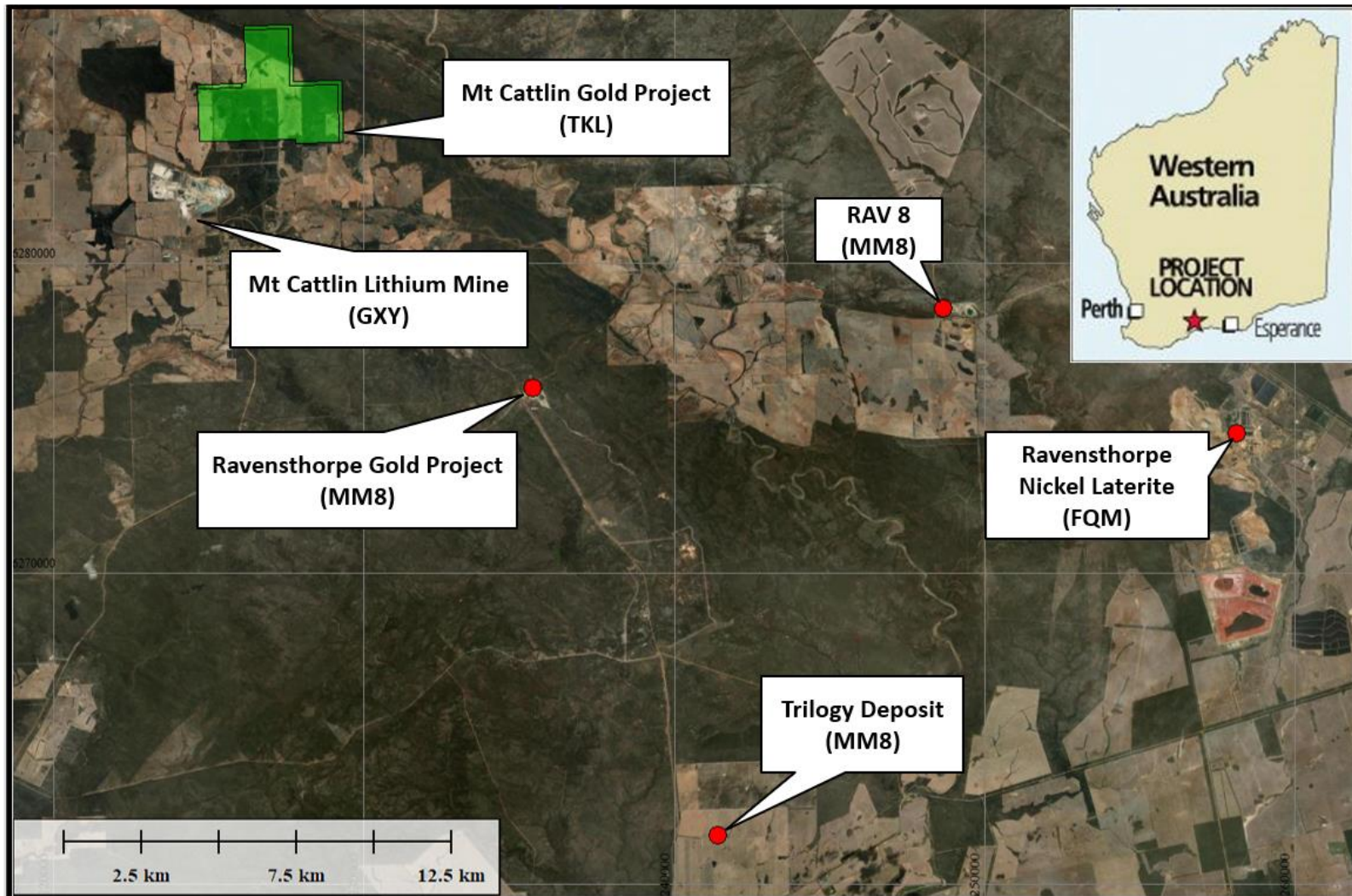
Board of Directors
Joshua Pitt – Non-Executive Chairman (Geologist)
Patrick Verbeek – Managing Director (Geologist)
George Petersons – Non-Executive Director (Prospector)

Shareholders



- Board of Directors
- Top 10 Shareholders other than Board
- Others

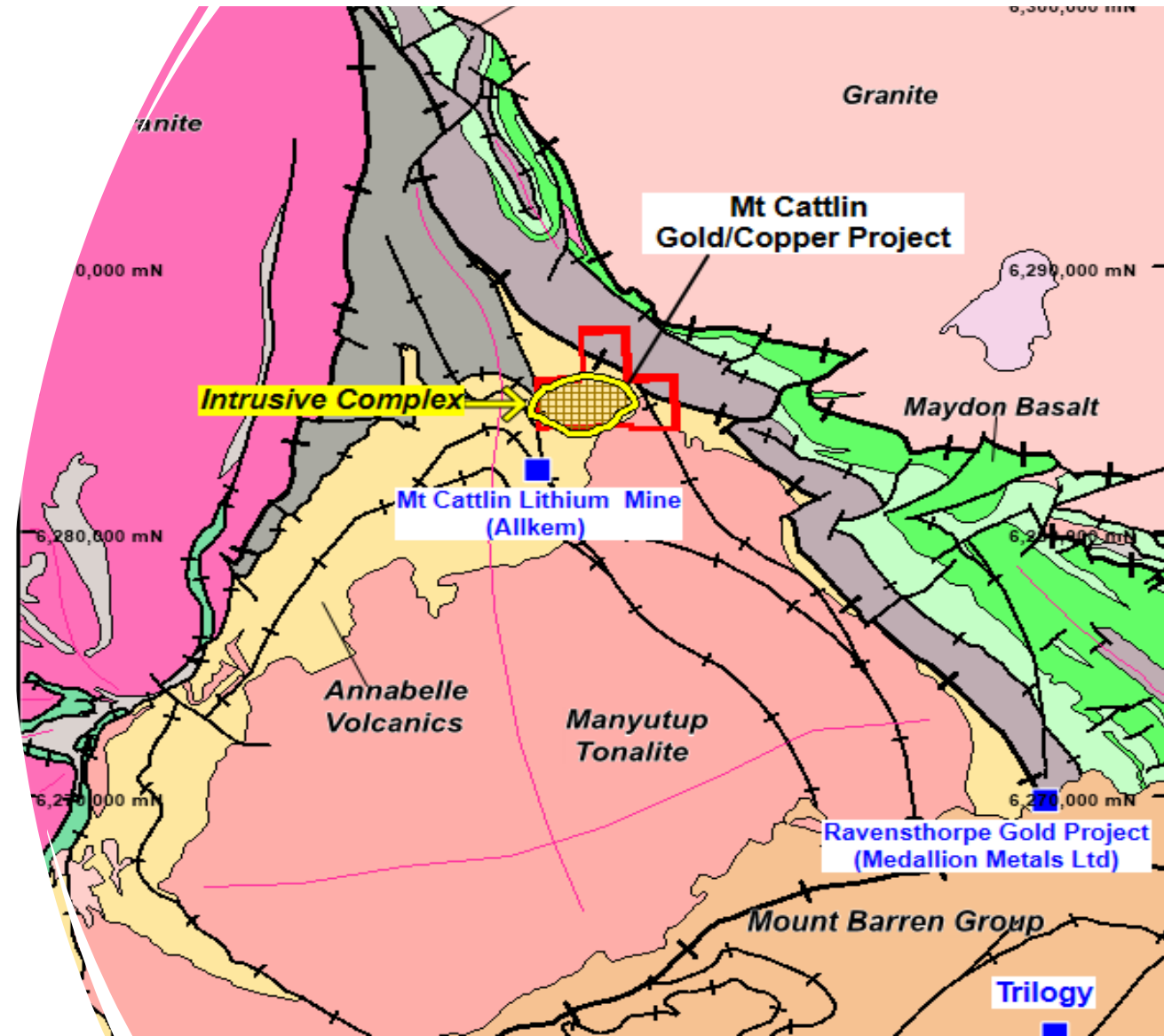
Tier-1 Jurisdiction



- ✓ Mt Cattlin Gold-Copper Project in south-west WA
- ✓ Proven mining district
- ✓ Excellent existing infrastructure
- ✓ Next to Mt Cattlin Lithium Mine (Allkem)
- ✓ Allkem retains the lithium-tantalum rights, with Traka holding rights to gold and other metals

Excellent Geological Setting

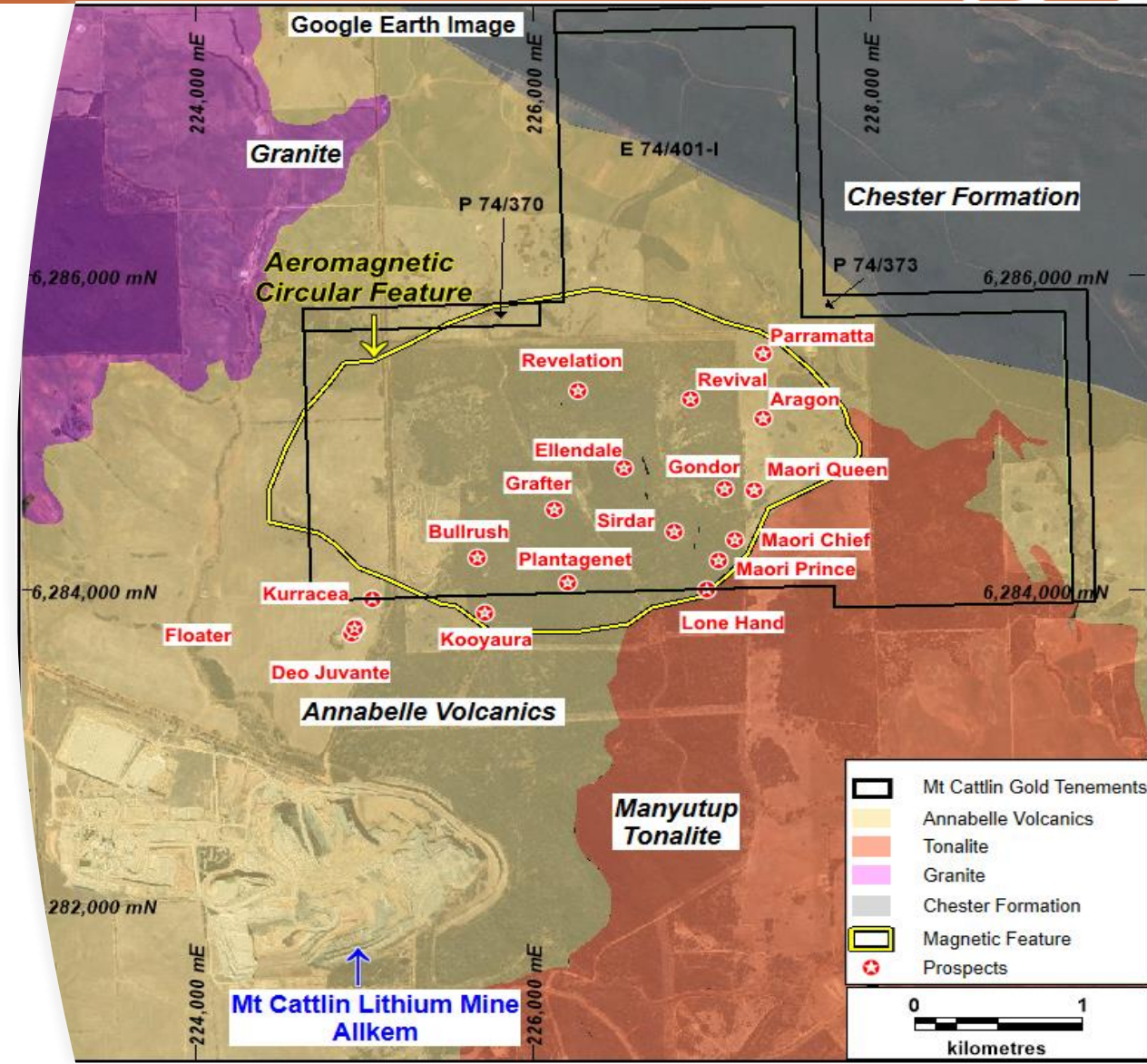
- Mineralised Intrusive Complex in the favoured fold nose position of the Ravensthorpe Greenstone Belt
- Regional scale mineralised thrusts/structures in fold axis and limb
- Gold and copper mineralisation found within the intrusives, on the margins (skarns) and in the structures
- Multiple intrusives and complex structural setting provide pathway and traps for mineralised hydrothermal fluids



Mt Cattlin Gold-Copper Project

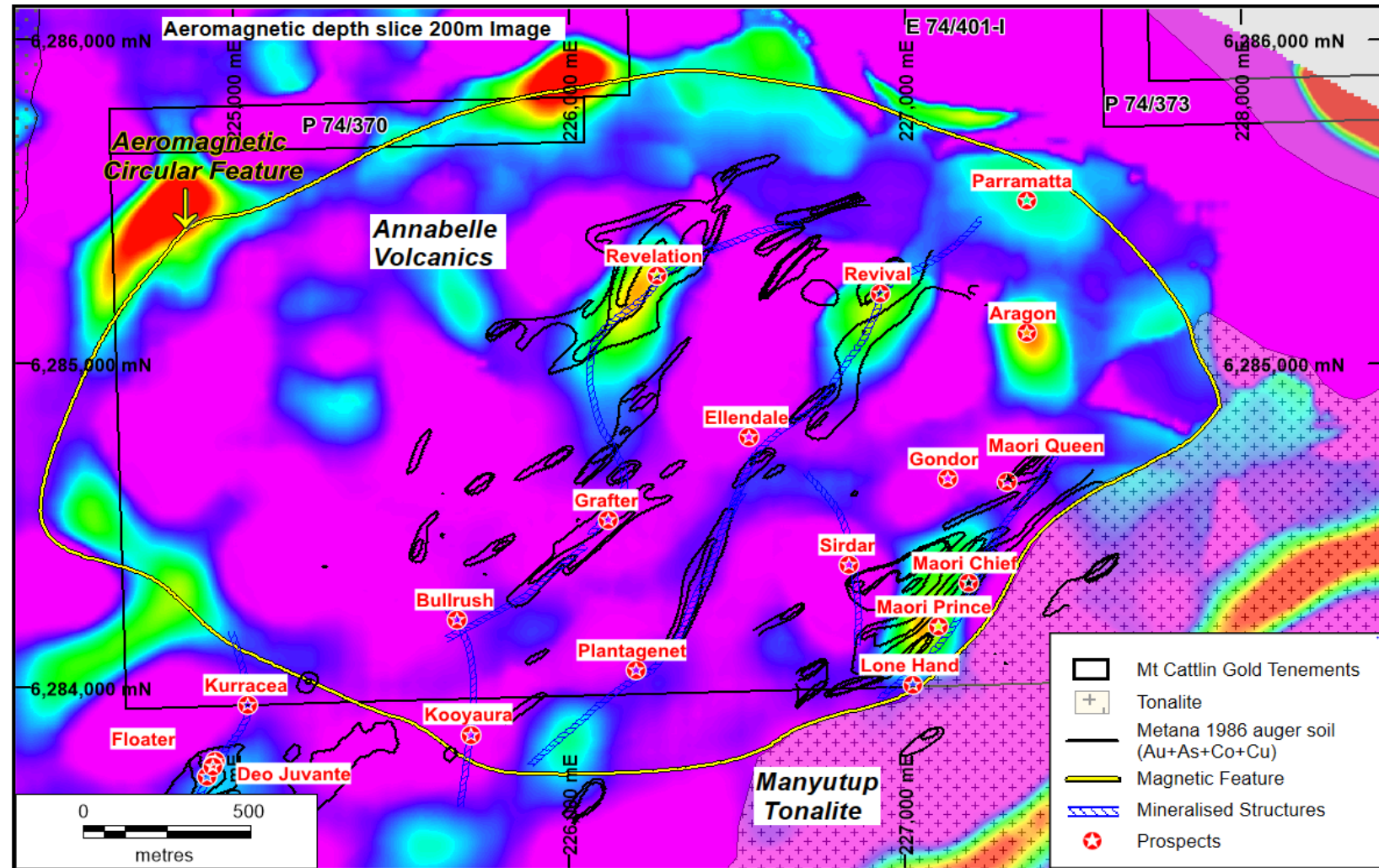
A proud history, with exploration now moving into a new era

- Historical production (turn of century)
 - 23kt @ 24.56g/t Au from 18 separate mines
- Modern exploration in 1980's and 1990's
- Hiatus of activity until Traka drilled in 2003 – good results, but low gold price (~US\$405/oz) and lack of gold mills in the region saw focus move elsewhere
- Allkem (Galaxy) Joint Venture - No exploration between 2004 and 2020
- Traka now in its second year of exploration
- Discovered gold and copper related to a 3.5km circular intrusive complex central to tenements



Intrusive complex underlying the historical gold workings

- 3.5km x 2.5km centrally-located complex
- Multiphase mafic, intermediate porphyry intrusives
- Late stage north-east orientated structures passing through the intrusive complex
- Historical mining on these structures
- Gossan, soil anomalism, aeromagnetics and IP highlight the targets



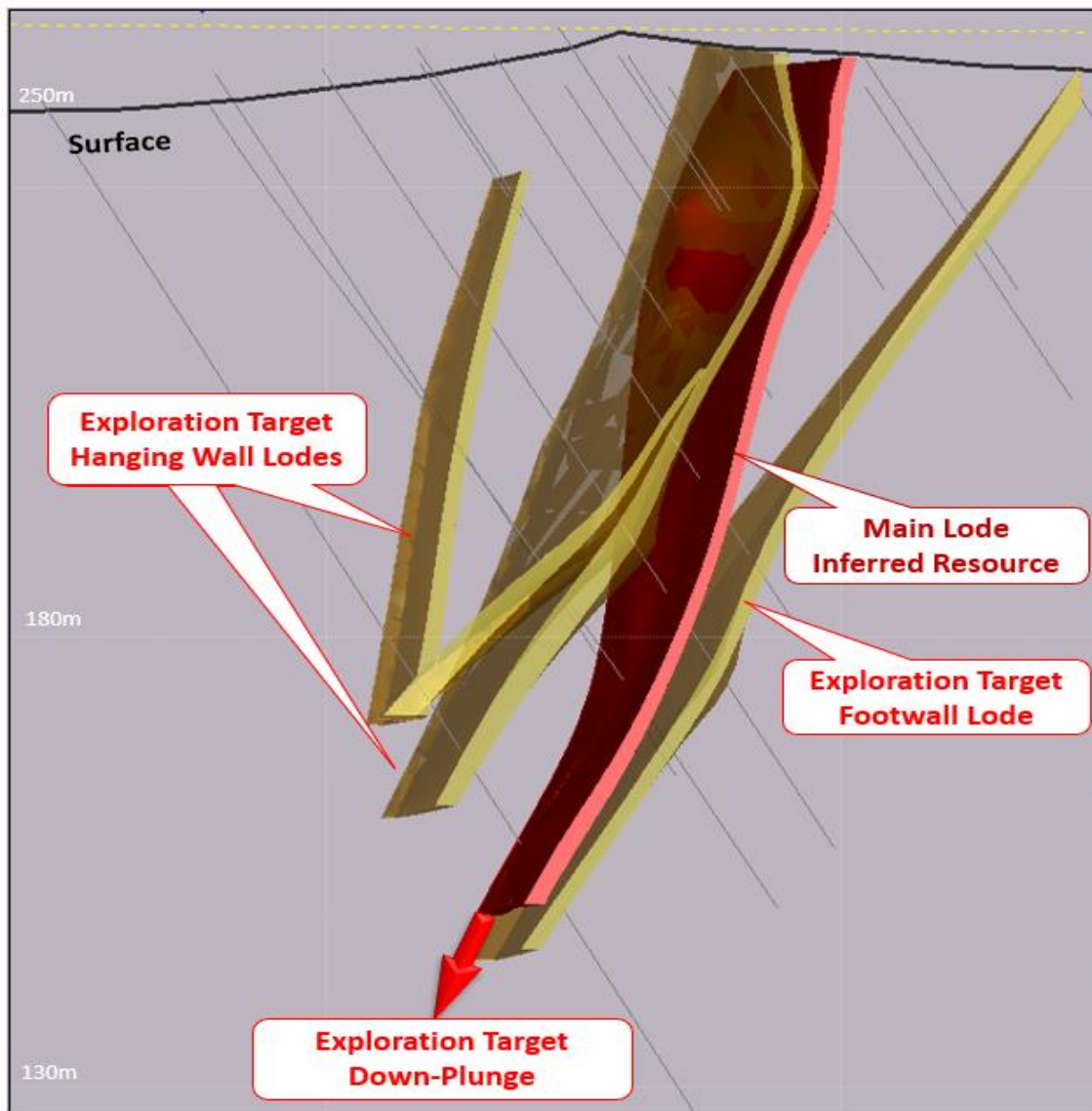
Maori Queen – historical mining

Turn of the century photo



Maori Queen – Structure hosted high-grade mineralisation

Located on a late-stage structure, open in all directions



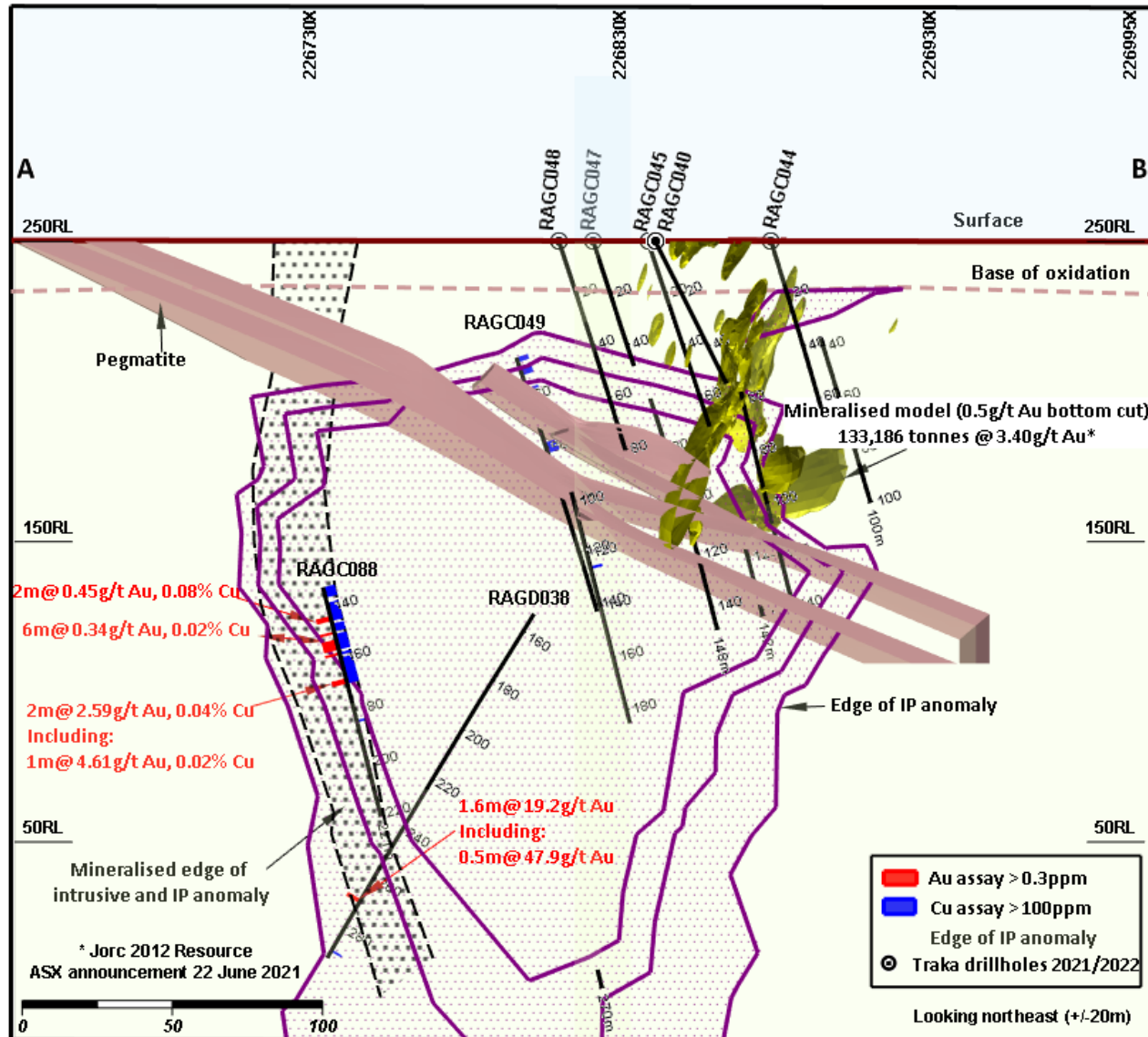
- Inferred Resource – **31,908 tonnes @ 6.19g/t Au** down to 100m vertical depth ⁽¹⁾
- Exploration Target* extending below Main Lode over next 100m depth – 25,000 to 35,000 tonnes at grades ranging between 5.5g/t and 6.5g/t Au
- Exploration Target* – footwall and hanging-wall lodes to Main Lode to 100m of 130,000 to 150,000 tonnes ranging between 2g/t and 3g/t Au
- Several other similar targets along 1km long trend

* The potential quantity and grade of Exploration Targets at Maori Queen is conceptual in nature. There has been insufficient exploration to estimate a Mineral Resource. It is uncertain if further exploration will result in the estimation of a Mineral Resource

(1) Traka ASX announcement 22 June 2021

Sirdar – Intrusive hosted mineralisation

Strong potential for open pit and underground mining



- Indicated and Inferred Resource to 100m depth of **133,186 tonnes @ 3.40 g/t Au** ⁽¹⁾
- Exploration Target* extending a further 100m below Mineral Resource of 120,000 to 160,000 tonnes at a grade of 2.5 – 3.5g/t Au
- Diamond hole RAGD038, drilled 200m under the Resource envelope:
 - 1.6m @ 19.2g/t Au, incl. 0.5m @ 47.9g/t Au**
- Intercept on the edge of a large IP anomaly – follow-up drilling planned

The potential quantity and grade of Exploration Targets at Sirdar is conceptual in nature. There has been insufficient exploration to estimate a Mineral Resource. It is uncertain if further exploration will result in the estimation of a Mineral Resource.

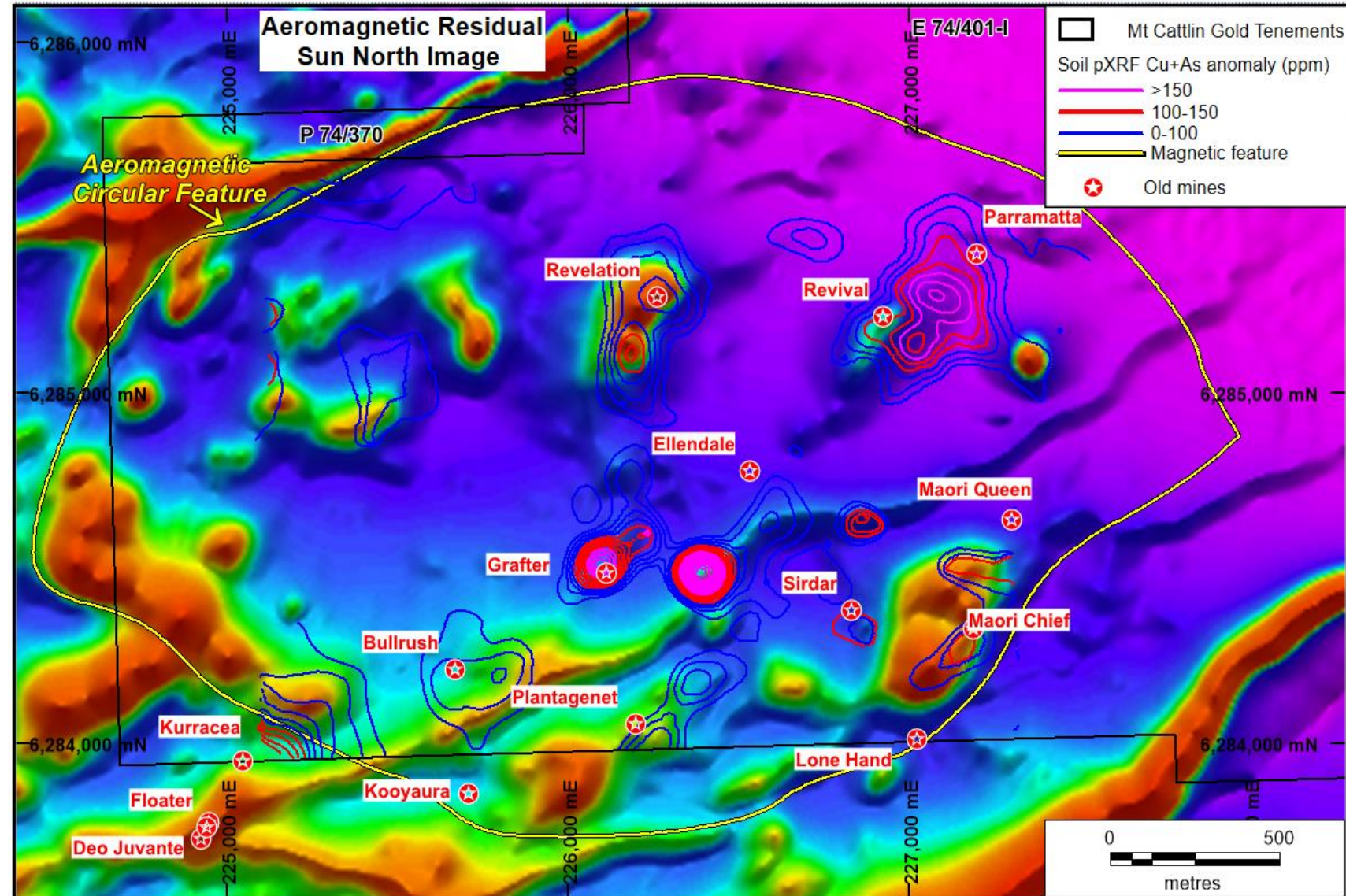
(1) Traka ASX announcement 22 June 2021



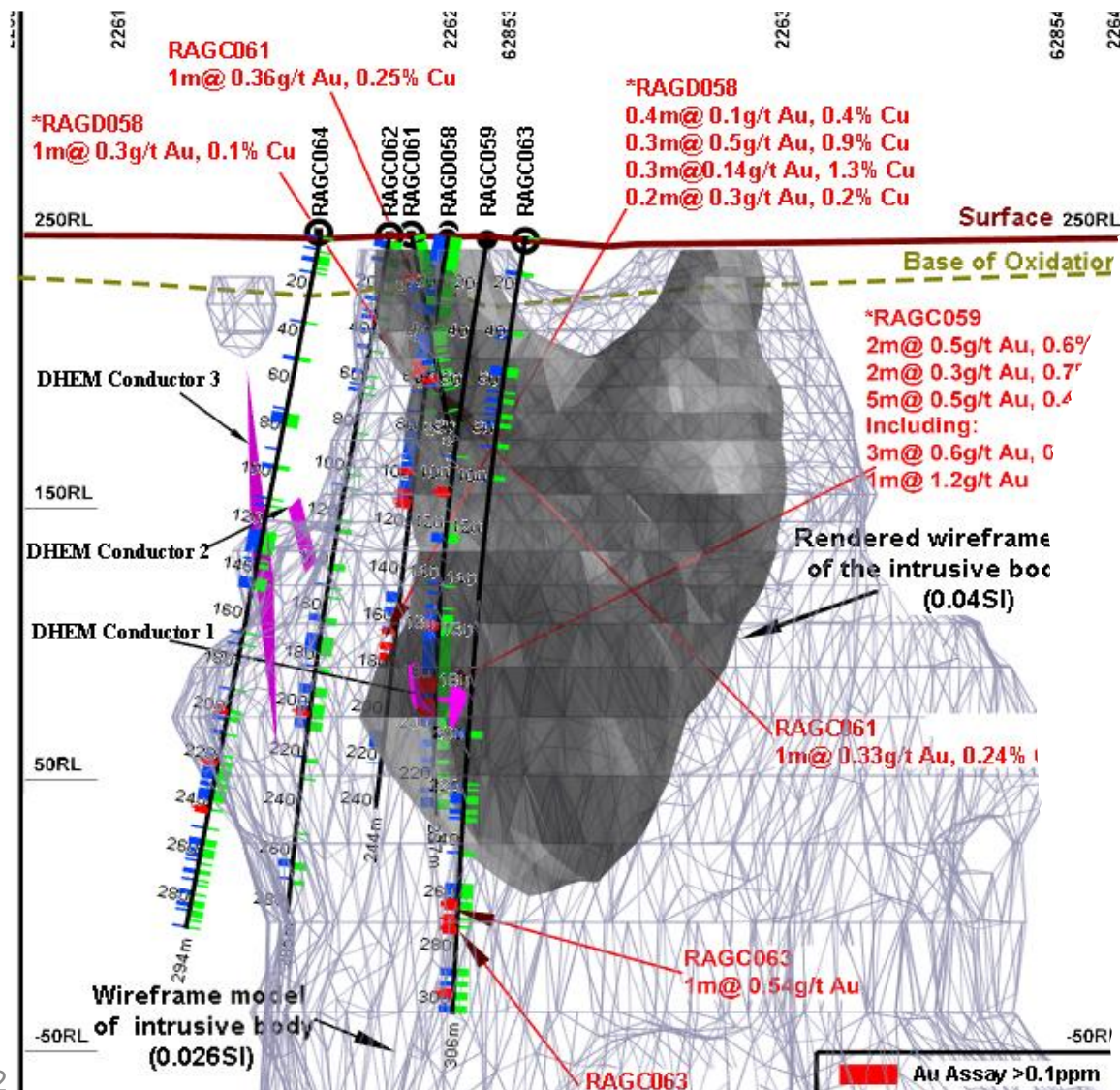
Multiple high-quality intrusive-related targets

Strong pipeline of additional prospects

- Revelation on coincident aeromagnetic and soil geochemical anomaly
- Skarn style host rocks for gold and copper mineralisation
- Indicators suggest Revelation sits on the edge of a larger intrusive (?)



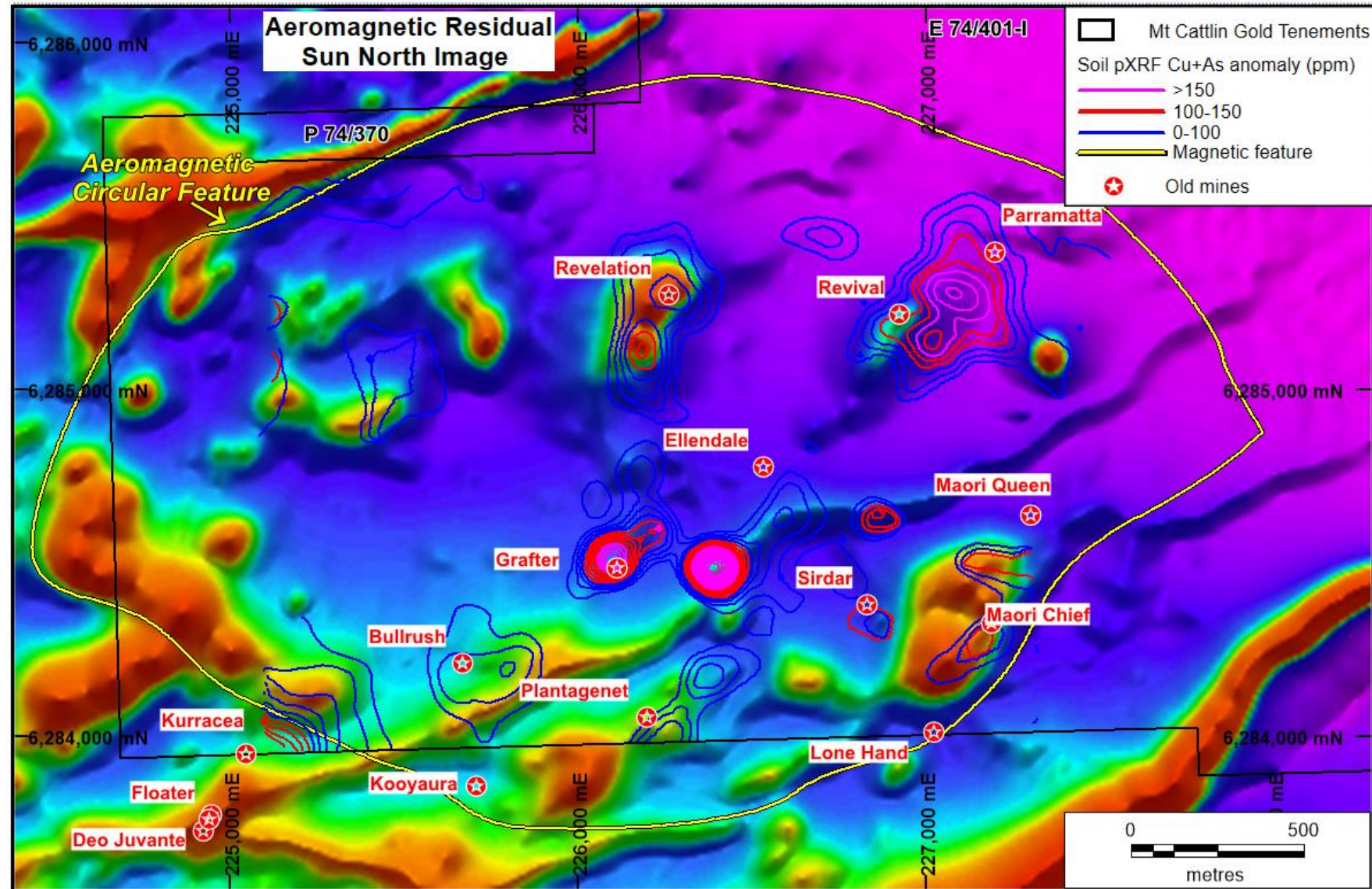
Revelation – Gold-copper mineralisation on the margins of an intrusive



- Vertical mineralised intrusive – sheared on south side
- Gold copper mineralisation in magnetite, garnet aegirine skarn
- Downhole Electromagnetic anomalies in the shear

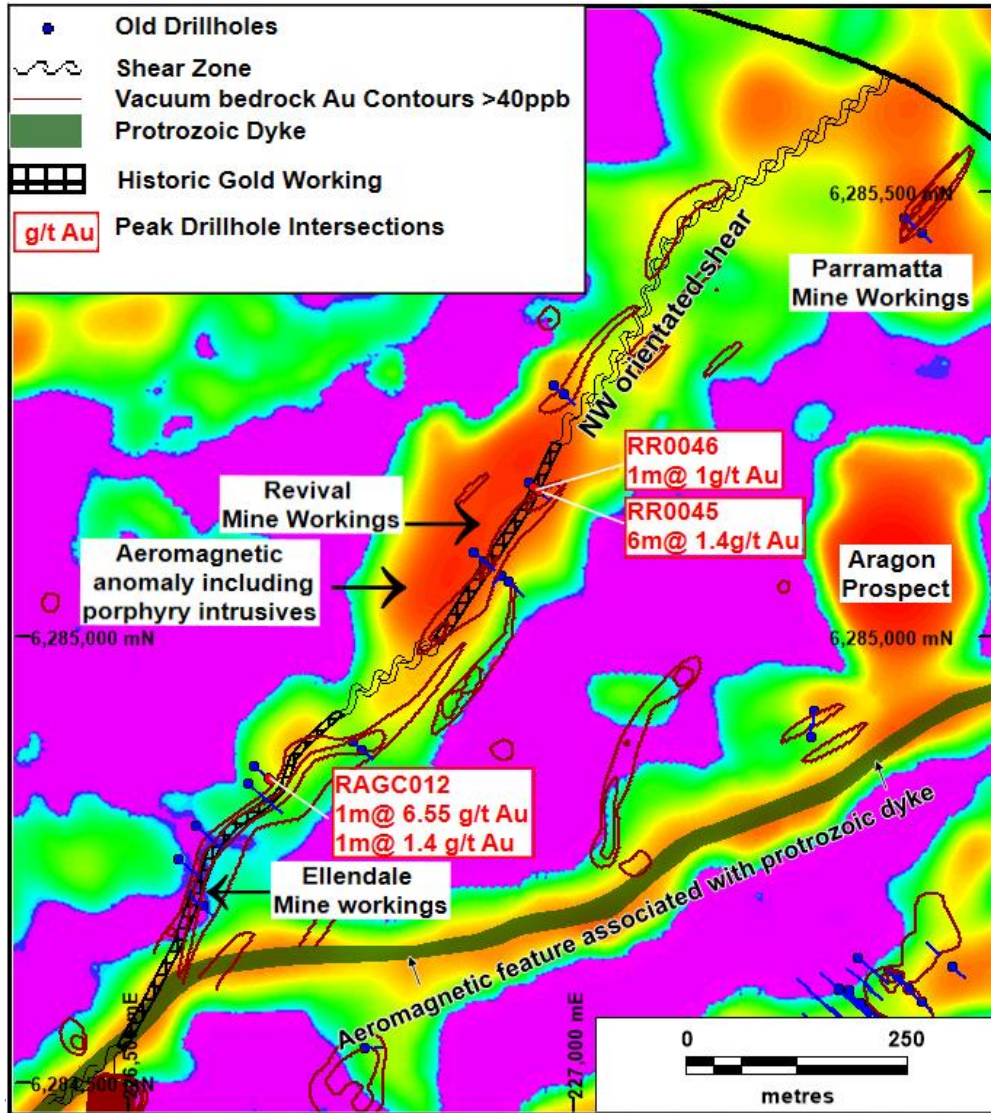
Revival-Ellendale-Plantagenet line of mineralisation: 1km trend

- Sirdar – no magnetic signature but coincident with IP (chargeability) and soil anomaly
- Maori Queen – north- eastern end of 1km trend and on the edge of aeromagnetic anomaly
- Distinct coincident IP and soil geochem anomaly but no aeromagnetic signature?
- High-grade shoots plunging to the north-east



Revival-Ellendale-Plantagenet line of mineralisation: 1km trend

Coincident aeromagnetic and soil geochemical anomaly



REVIVAL - Drillhole RAGC094⁽¹⁾ within 50m wide zone:

4m @ 5.53g/t Au from 76 m downhole including 1m @ 18g/t Au, 7m @ 5.91g/t Ag, 1.56% Cu from 86m downhole including - 1m @ 8.96 g/t Ag, 1.56% Cu and 1m @ 14g/t Ag, 2.33 % Cu.

ELLENDALE – Drillhole RAGC073⁽²⁾ within 30m wide zone:

11m @2.5g/t Au, 2.94 g/t Ag and 0.29% Cu from 77m downhole including 1m @ 11.8 g/t Au, 1 g/t Ag and 0.11% Cu and 2m @ 3.05 g/t Au, 3.39 g/t Ag and 0.29% Cu.

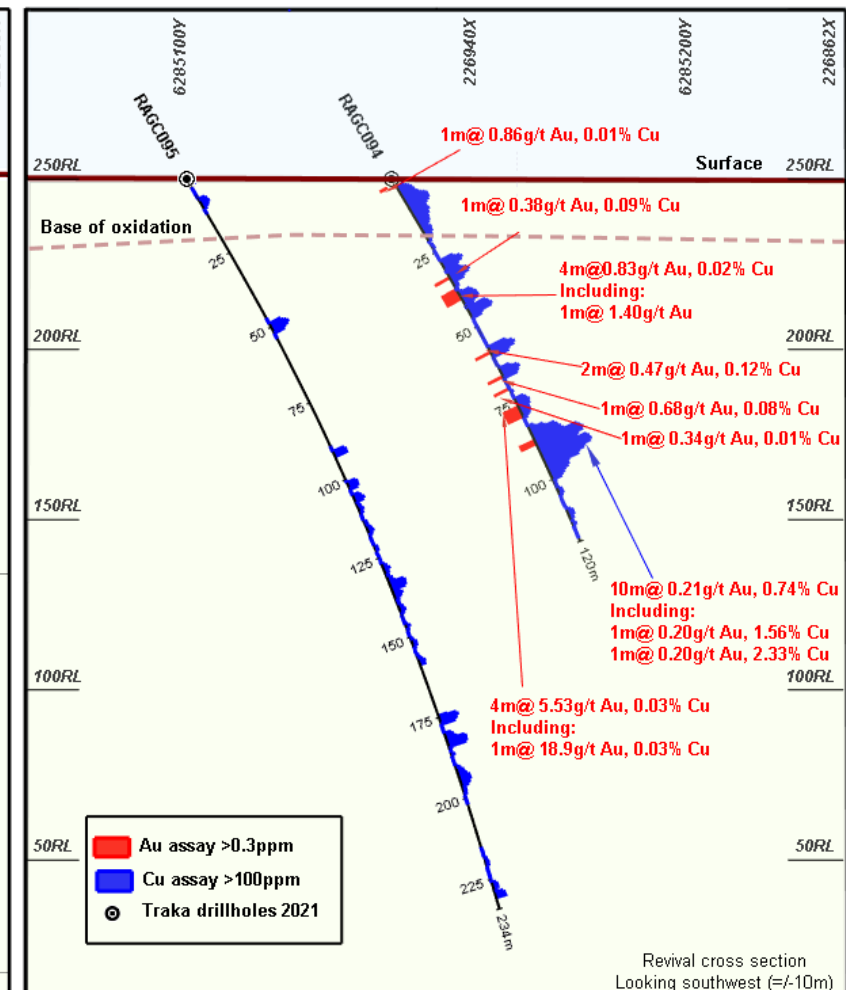
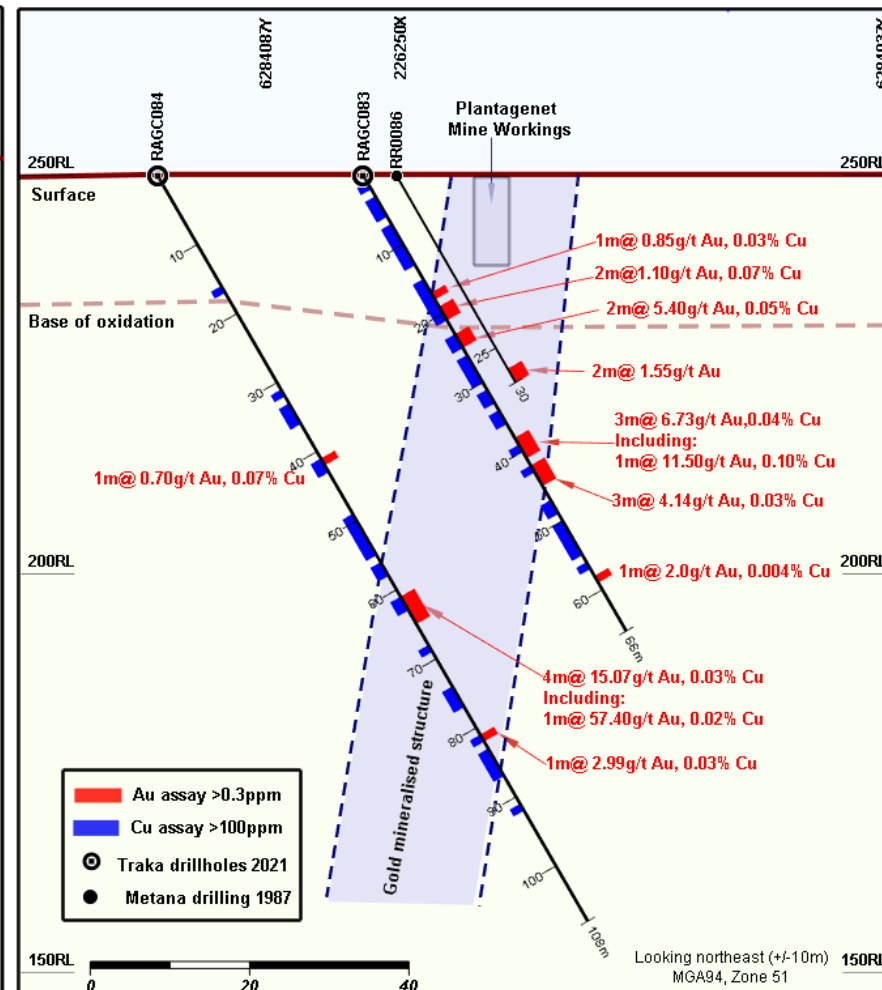
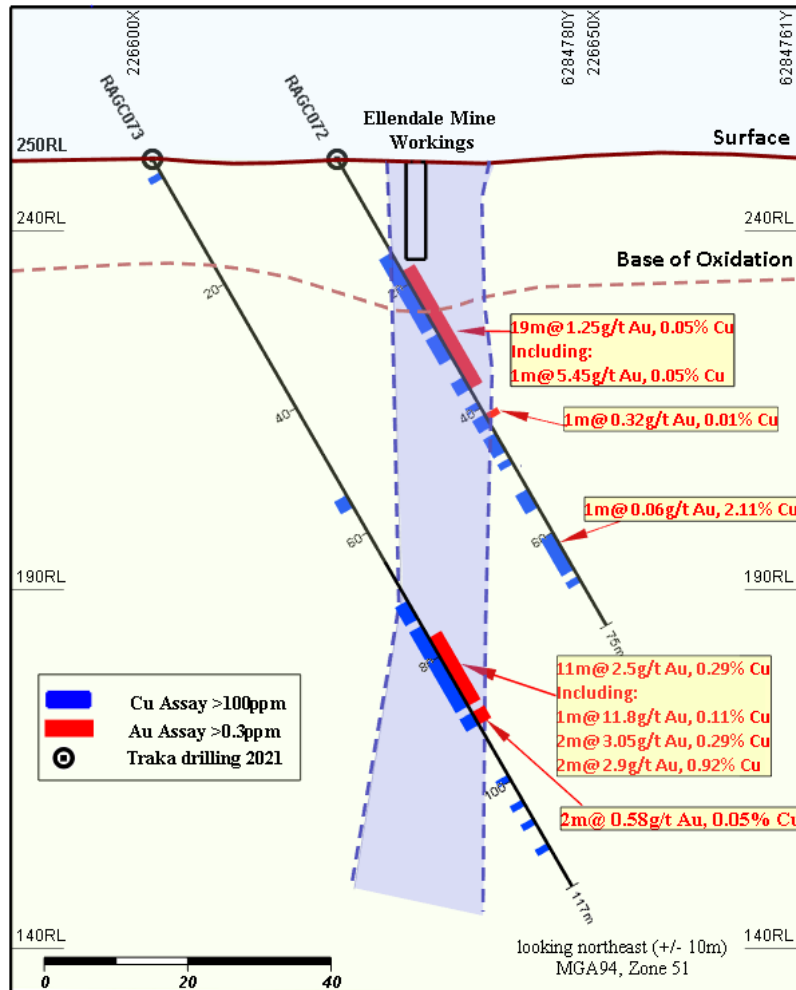
PLANTAGENET – Drillhole RAGC084⁽³⁾ within 20m wide zone

4m @ 15.07g/t Au, 1.28g/t Ag and 0.10% Cu from 61m including 1m @ 57 g/t Au, 0.41g/t Ag and 0.02% Cu

- (1) Traka ASX announcement 25 February 2022
- (2) Traka ASX announcement 15 December 2021
- (3) Traka ASX announcement 10 January 2022

Revival-Ellendale-Plantagenet line of mineralisation: 1km trend

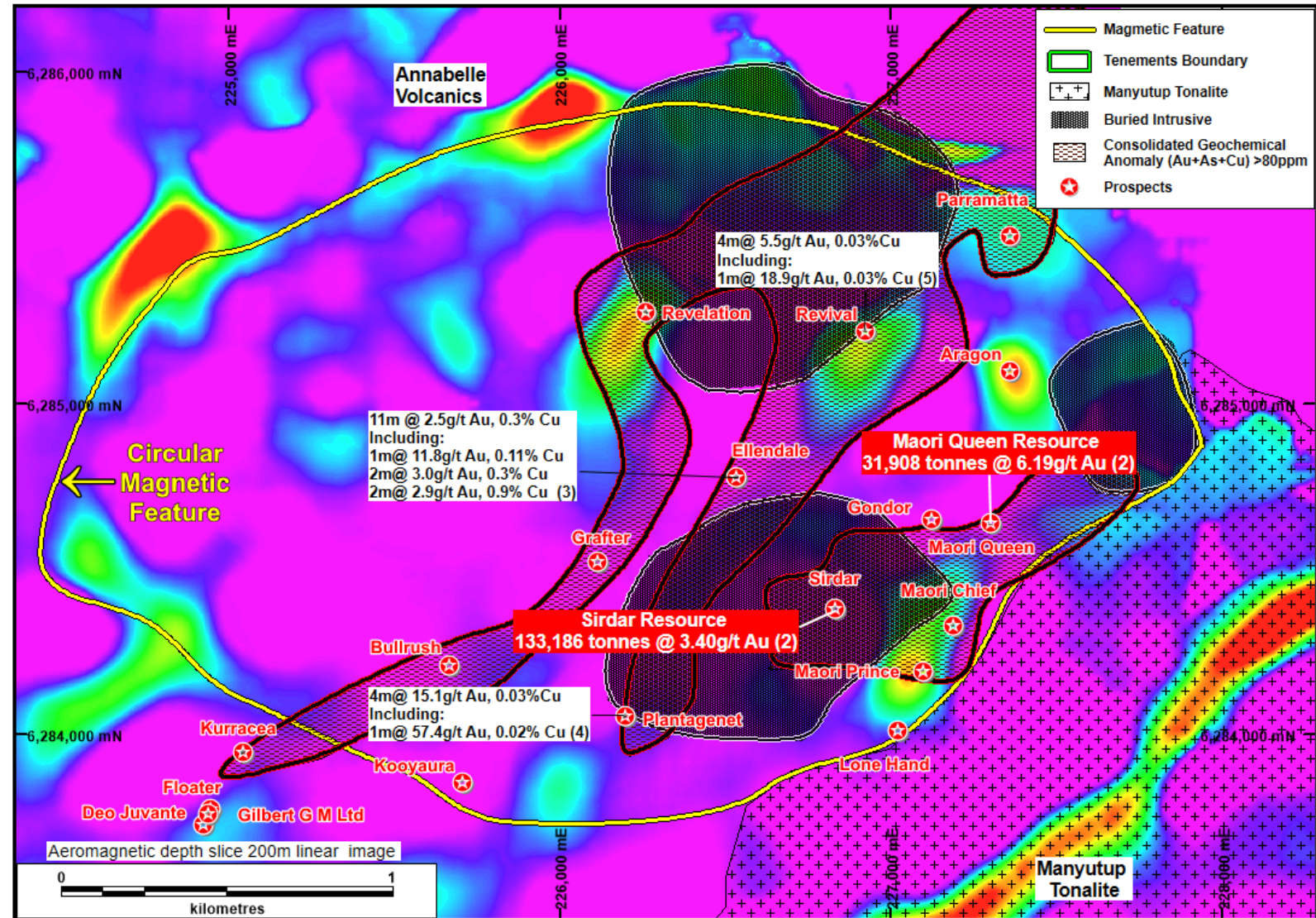
Coincident aeromagnetic and soil geochemical anomaly



3D Geochemical Footprint Modelling – Vectoring to the mineralised core

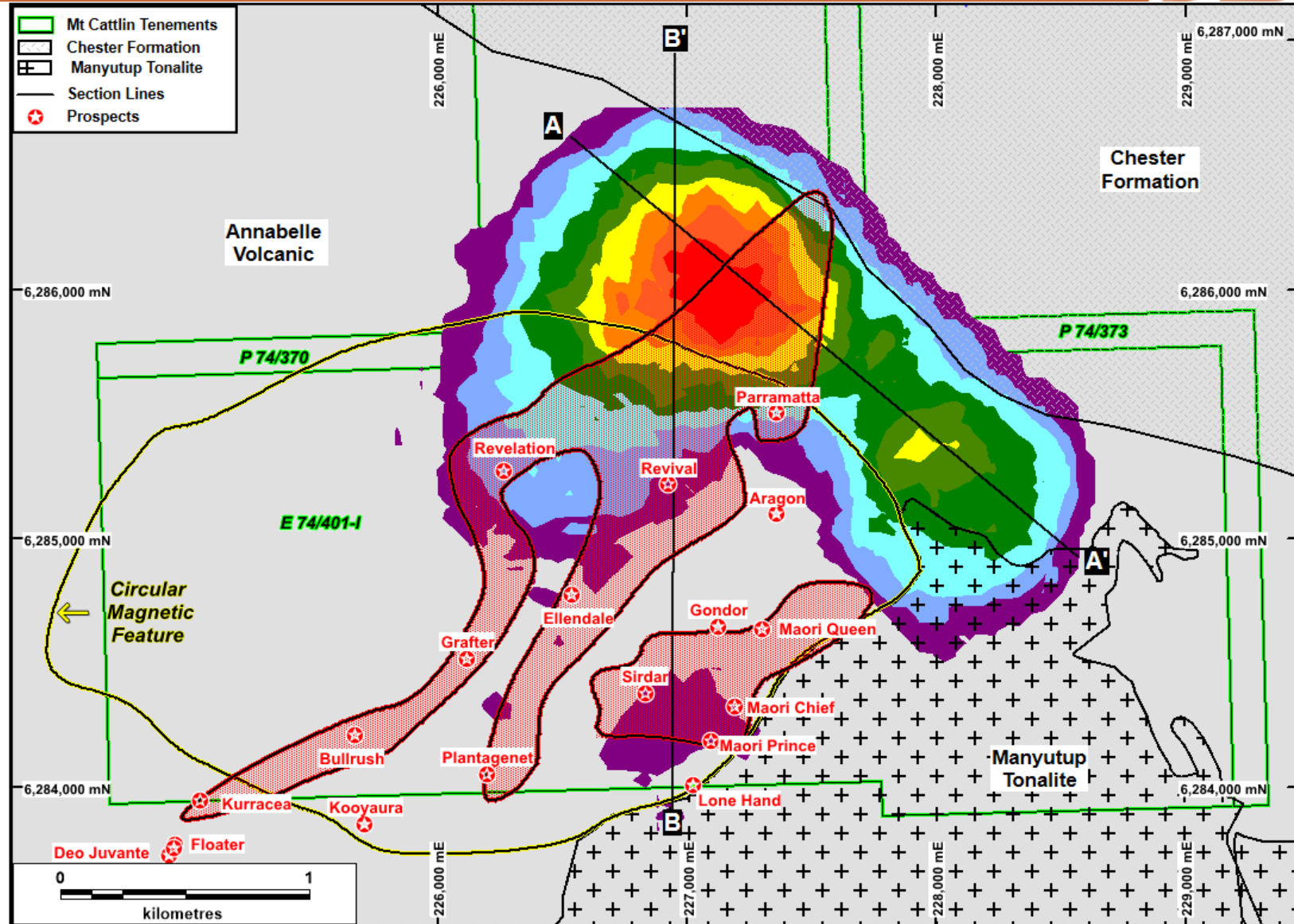
- 3.5km x 2.5km centrally-located complex
- Three buried intrusives within the complex ⁽⁴⁾
- Late stage north-east orientated structures passing through the intrusive complex
- Historical mining on these structures and on contacts to side and above

(4) Traka ASX Announcement 16 May 2022



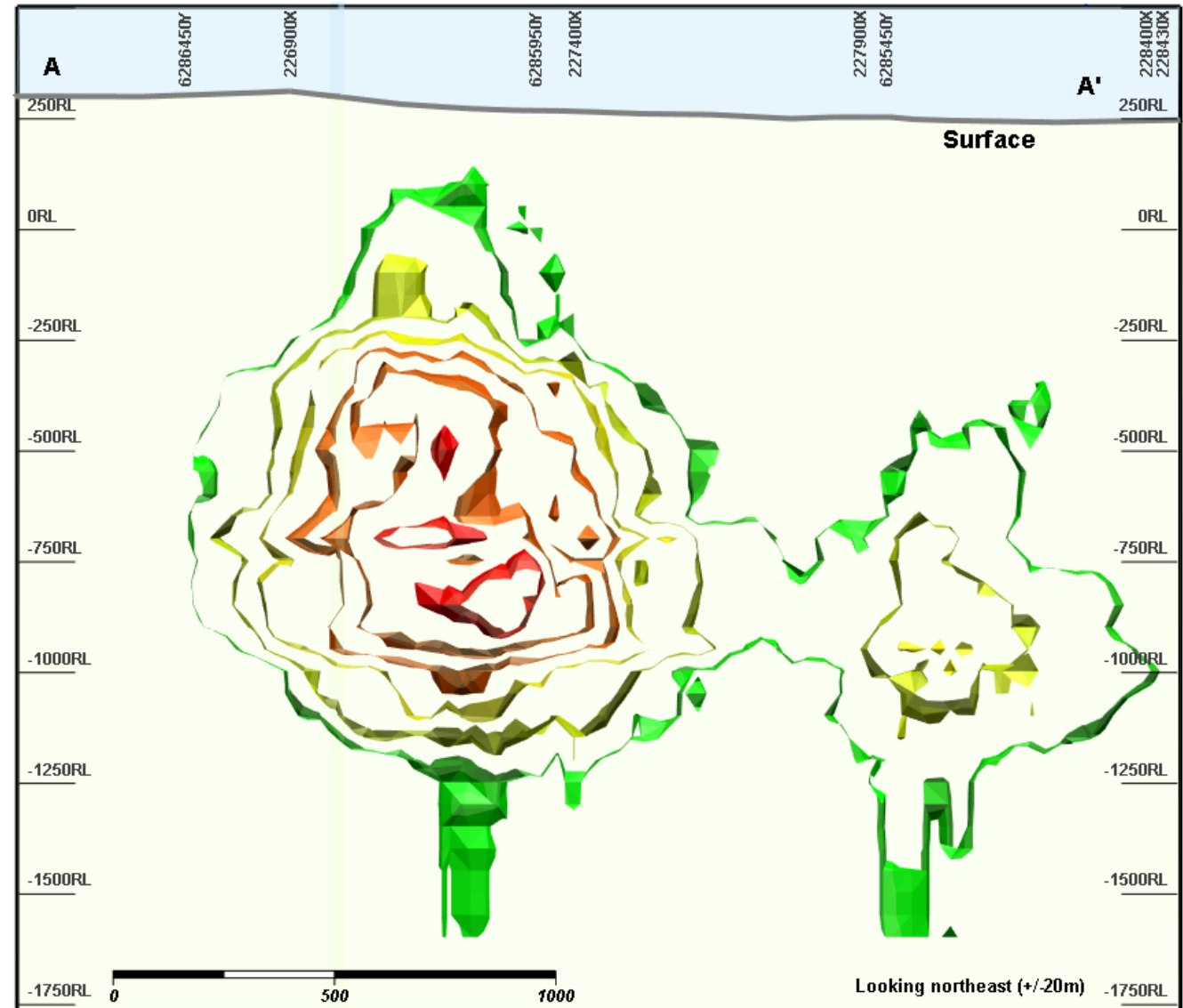
3D Geochemical Footprint Modelling – Vectoring to the mineralised core

- Known mineralised targets sit on the periphery or above the cores of the intrusives
- Geochemistry being used to map out the alteration halo around porphyry/IRG intrusive complex
- Overprint soil geochemical anomalism where mineralisation remobilised into late stage structures – dominant northeast direction



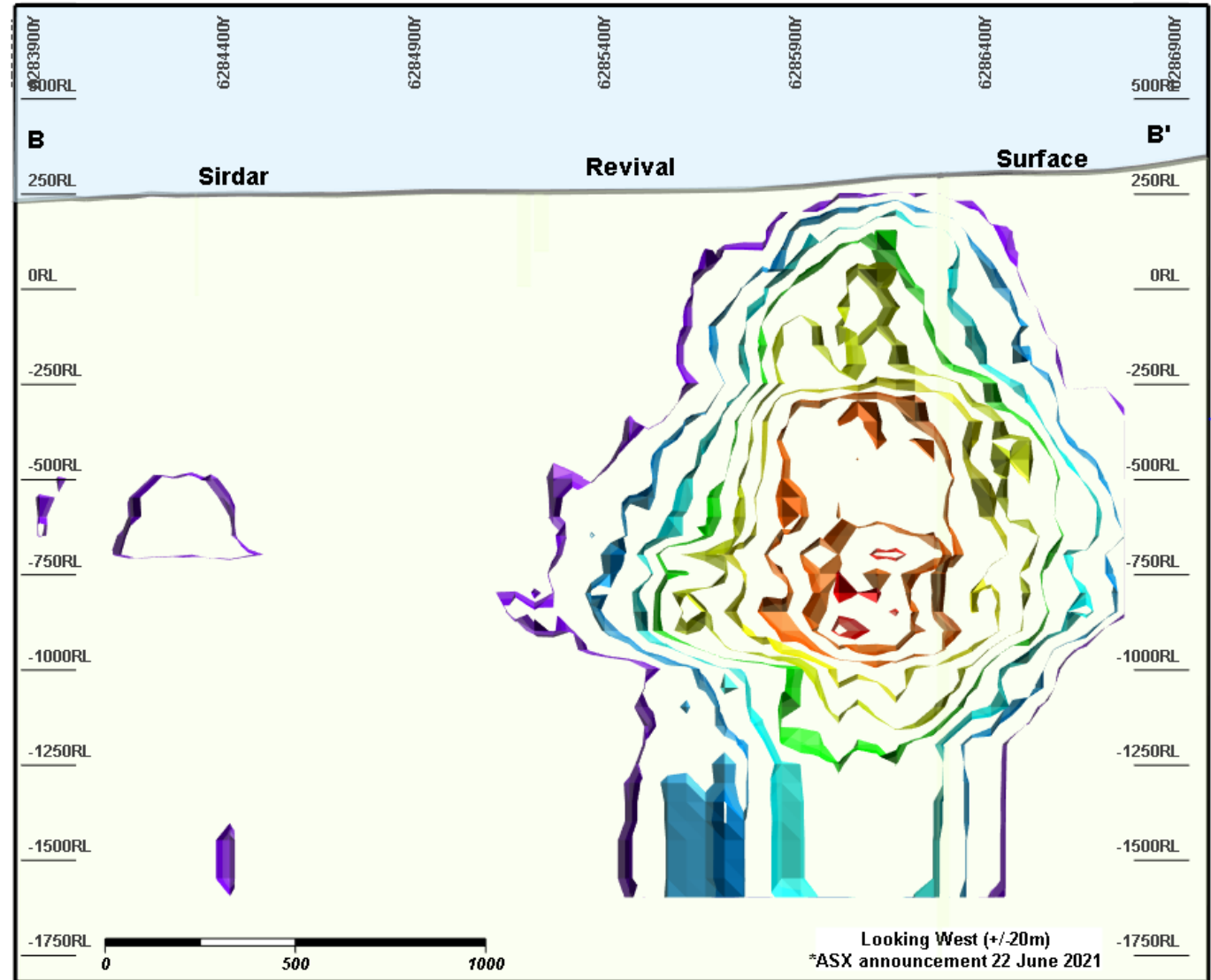
Schematic Long section A_A1 – Vectoring to the core

- Largest and shallowest northern target has never previously been sampled
- Located under cleared cropped farming land, but evidence of porphyry and intrusives on surface
- 800+ metre drillhole to test through the core
- Second target north-east of Maori Queen



Schematic Long section B _B1 – Vectoring to the core

- Sirdar Mineral Resource and IP anomaly located directly above third buried intrusive



Program of Work

High-impact exploration programs underway



- ✓ Awaiting in-fill rock and soil geochemical data to firm-up the 3D model
- ✓ Fly MobileMT (Airborne Magnetelluric) survey – targeted for July
- ✓ MobileMT is a deep penetrating system. It will map out the structures and areas of mineralisation, providing detail and support for the targets generated by 3D geochemical modelling
- ✓ Gear up for drilling on deep and shallow targets





Thank you.



**RESOURCES
RISING STARS**
Opportunities + Insights for Resources Investors

ASX: TKL

