

Excellent Results Continue at the Highway Zone

Odyssey Gold Limited (ASX:ODY) (“Odyssey” or “Company”) is pleased to announce excellent ongoing drill results from the Tuckanarra Project.

HIGHLIGHTS

- Results are reported for five holes recently drilled at the Tuckanarra Project
- The Highway Zone has been intersected in two holes with results including:
 - CBRC0056** 5m @ 3.8g/t Au (170m)
 13m @ 3.7g/t Au (180m)
 11m @ 7.8g/t Au (199m) including 6m @ 13.8g/t Au (199m)
 7m @ 1.7g/t Au from (237m)
 - CBRC0111** 8m @ 1.2g/t Au (40m)
 6m @ 1.2g/t Au (80m)
 2m @ 1.5g/t Au (115m)
- Significant width of mineralisation confirmed with east and west dipping holes intersecting >40m downhole widths. The true width of the full width of the Highway Zone structure is estimated to be 12-20m.
- High grade mineralisation now drilled for over 480m east from the Bollard Pit and further RC drilling is continuing to the east
- The structure trends towards soil samples of 350ppb Au 350m to the east northeast and a historic RAB intercept of 3m @ 3.0g/t Au from 9m (TPH0150) 650m to the northeast of existing RC drilling.
- Encouraging results for the first three RC holes are reported at Anchor South include:
 - CBRC0082** 4m @ 3.9g/t Au from 24m
- Anchor South drilling has confirmed the continuation of multiple parallel veins to 200m to the south of previous mining.
- Samples for over 6,000m of drilling are at the laboratory, with RC drilling continuing.

Managing Director, Matt Briggs commented:

“These most recent RC results at the Highway Zone continue to demonstrate the broad width of mineralisation. Within the mineralised corridor we consistently intersect 3-5 intervals of veining within an 8-20m wide structure.

“The intersection of 6m @ 13.8g/t Au is adjacent to previous results of 12m @ 9.1g/t Auⁱ, 6m @ 9.3g/t Auⁱⁱ and 9m @ 6.1g/t Au^{iv} (Figure 1). This hole confirms an emerging high-grade shoot and continuous

mineralisation for 250m of strike. More recent drilling has intersected veining and sulphide mineralisation in 80m spaced RC drill lines extending mineralisation to 480m east from the Bollard Pit.

“The Highway Zone appears to be a regional structure and distinct from the 2km long Cable-Bollard Trend. This further opens the potential to extend the mineralisation at the Highway Zone to the south, as well as north. RC holes are also planned to test the southwestern extension (Figure 2).

“The RC results at Anchor South are Odyssey’s first drilling to extend the Anchor Mine mineralisation to the south, under the Drogue Laterite. The RC drilling confirms the presence of two veins at Anchor South. A result of 4m @ 3.9g/t Au occurs below a previous aircore result of 6m @ 4.9g/t. RAB drilling is planned to drill the Anchor South veins further to the south prior to further RC drilling.”

Samples from over 6,000m of drilling are at the laboratory with assays awaited.

For further information, please contact:

Matt Briggs

Managing Director: +61 8 9322 6322

Cable-Bollard Trend Background

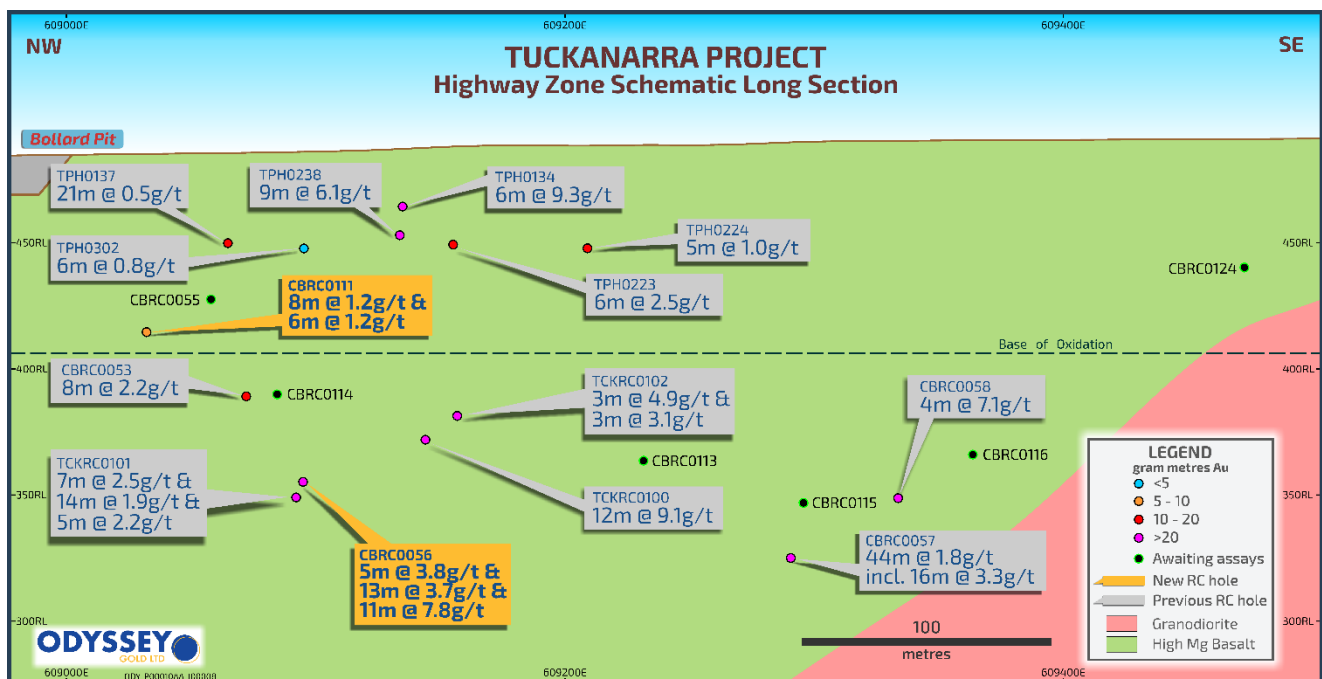


Figure 1. Highway Zone Long Section. Results from this announcement in yellow.

Previous mining at Cable-Bollard in the 1990’s produced 52.9koz Au at an average grade of 3.4g/t Au from shallow oxide pits (refer ASX announcement dated 27 Nov 2020). Odyssey has demonstrated the potential to grow the system, with mineralisation now extending for over 2km of strike and to a vertical depth of over 160m.

The Cable-Bollard Trend comprises multiple parallel mineralised structures made up of banded iron formation (“BIF”) units, sheared quartz veins in mafic intrusives and metavolcanics, and highly silicified

ultramafics resembling BIF's, with consistent gold mineralisation occasionally interrupted by barren cross cutting felsic dykes.

Recent drilling by Odyssey has focussed on defining high grade shoots extending below the Bollard and Cable Pits, along with extending the system to the north and to the east at the Highway Zone.

Highway Zone

The Bollard Pit was mined in 1993 focusing on higher grade areas of shallow laterite and oxide mineralisation. Although drilling demonstrated multiple zones of gold mineralisation extending below the pit, these were not mined due to the low gold price and limitations of processing at the time. Mining was limited to a maximum of 30m below surface.

Drilling at the Highway Zone completed in late 2021 included results of 7m @ 2.5g/t Au, 14m @ 1.9g/t Au, and 5m @ 2.2g/t Au in TCKRC0101^{vi} (Figure 1). This drilling highlighted the potential for significant growth of the historic pit to the east.

Drilling during 2022 now indicates the Highway Zone is a distinct structure to the Cable-Bollard Trend. The Highway Zone is coincident with a north-northeasterly striking regional structure interpreted in airborne magnetics. The mineralisation is in an orientation not previously recognised at the Tuckanarra Project.

Reverse circulation ("RC") drilling has continued at the Highway Zone. Results for two holes have returned, confirming the interpreted north-northeasterly strike and producing the widest zone of mineralisation to date. The Highway zone is 8-20m true width, with 3-5 internal zones of quartz veining and sulphide mineralisation.

CBRC0056	5m @ 3.8g/t Au (170m)
	13m @ 3.7g/t Au (180m)
	11m @ 7.8g/t Au (199m)
	including 6m @ 13.8g/t Au (199m)
	and 1m @ 64g/t Au (203m)
	7m@1.7g/t Au from (237m)
CBRC0111	8m @ 1.2g/t Au (40m)
	6m @ 1.2g/t Au (80m)
	2m @ 1.5g/t Au (115m)

RC drilling is continuing to grow the structure to the east, The most eastern hole to intersect the main Highway Zone structure intersected 44m @1.8g/t Au including 16m @ 3.3g/t Au (CBRC0057). Hole CBRC0057 finished in mineralisation with last sample assay of 4.1g/t Au. This hole has now been extended to drill the full width of mineralisation.

The RC program underway is drilling 80m spaced lines extending the structure to the east. Holes CBRC0115, CBRC0116 and CBRC0124, intersected veining and sulphides extending the total strike length of mineralisation to 480m from Bollard Pit

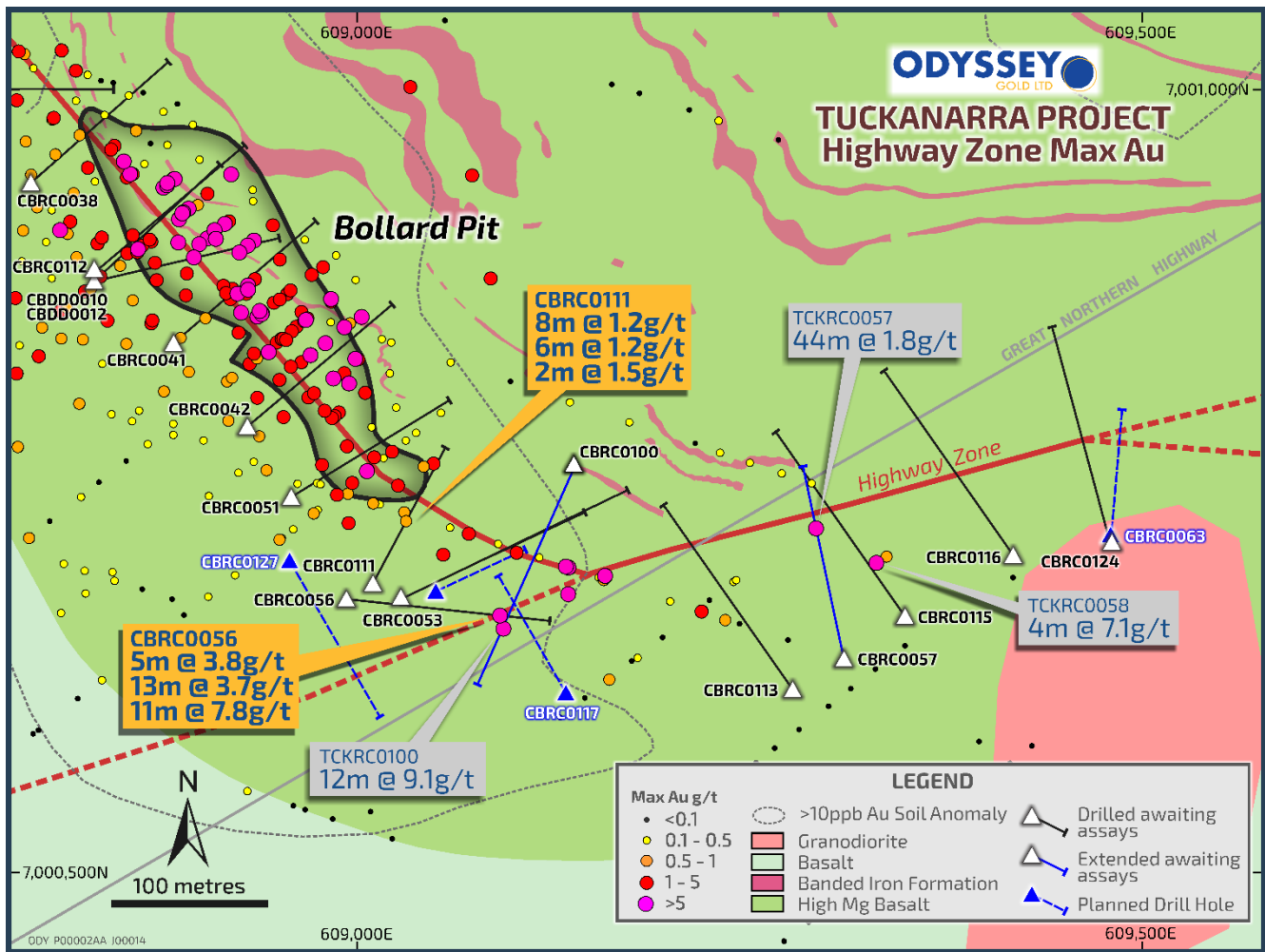


Figure 2. Highway Zone Long Section. Results from this announcement in yellow.

The structure remains open to the east and trends under cover. The cover masks the surface expression of the structure in soil sampling. In historic soil sampling 500m to the east of the cover is soil anomalism of over 100ppb peaking at 350ppb. To the northeast of the last intersection on the structure is a historic Rotary Air Blast (“RAB”) hole with 3m @ 3g/t Au from 9m (TPH0150)^{vi}. Either of these two areas of gold anomalism could represent the eastern extension of mineralisation. RAB drilling and further RC drilling is planned to continue to grow the system along strike to the east and southwest.

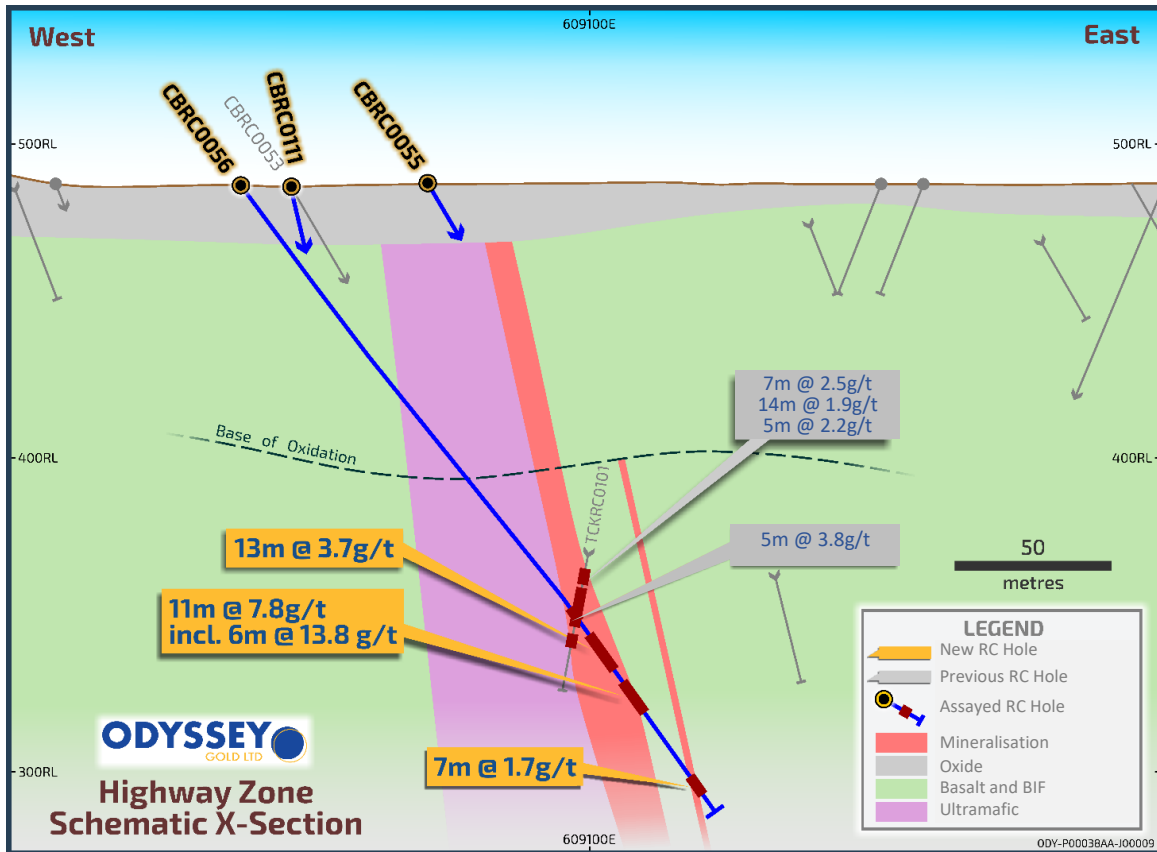


Figure 3 - Highway Zone oblique cross section through hole CBRC0056

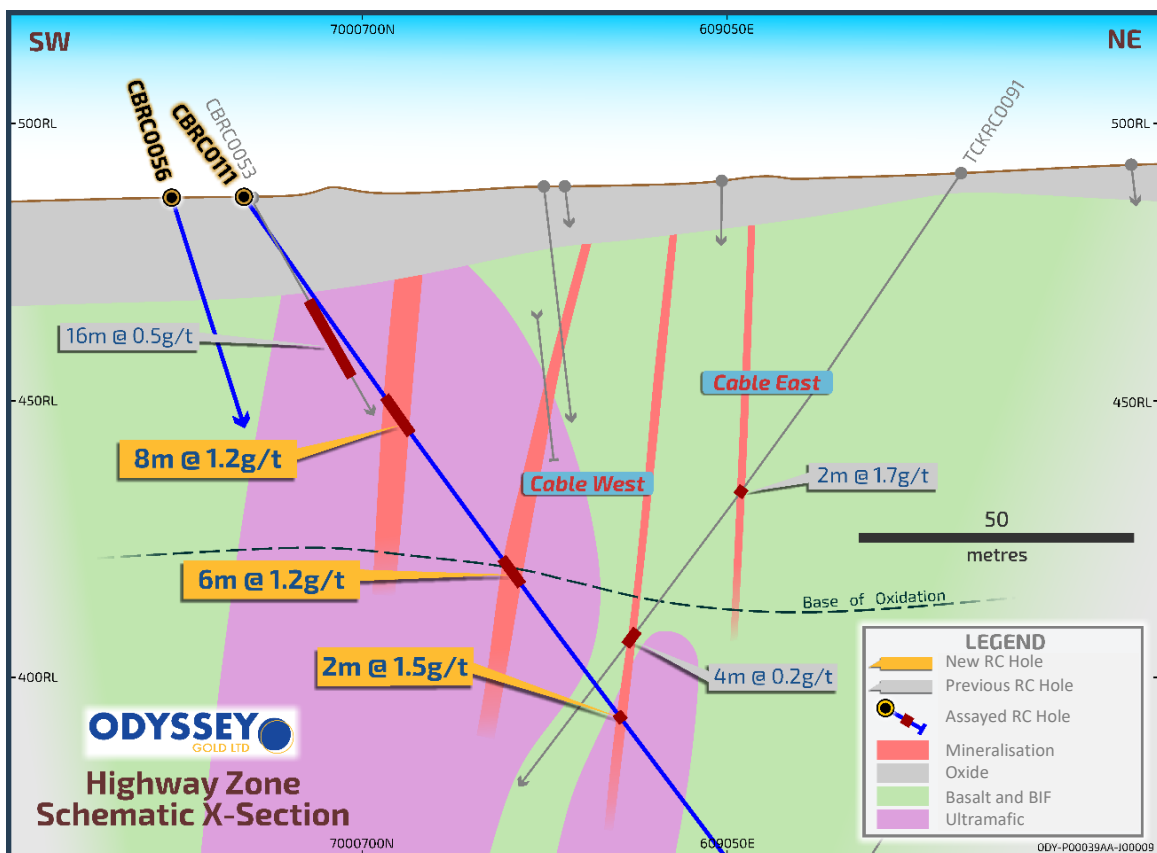


Figure 4 - Bollard / Highway Zone cross section through hole CBRC0111

Anchor South

The Anchor South target is located 300m to the east of the Cable Pit and 150m south of previous mining at Anchor. The area is overlain by a mineralised laterite, previously reported as the Droque Resource in 2012. The aircore drilling to define laterite gold often penetrated deeper into the regolith profile below the laterite mineralisation. Quartz associated with veining within these include a result of 6m @ 4.9g/t Au from 9m within the previously reported interval of 12m @ 2.7g/t Au from 2m^{viii} (PAC248). The hole ends in mineralisation. This intersection is 150m to the south and along strike of workings at the Anchor (Figure 7).

Three RC holes for 336m of drilling were recently completed. The holes have intersected two parallel north-northeast striking mineralised veins including results of (Figure 6 and Figure 7):

CBRC0082 4m @ 0.7g/t Au from 0m (laterite)

4m @ 3.9g/t Au from 24m

CBRC0080 8m @ 0.5g/t Au from 0m (laterite)

4m @ 0.4g/t Au from 40m

4m @ 1.0g/t Au from 128m

CBRC0081 4m @ 0.4g/t Au from 12m (laterite)

4m @ 0.7g/t Au from 72m

Shallow intersections of the Droque Laterite were also intersected near surface. The Droque Laterite was previously declared as a resource by Phosphate Australia in 2013^{ix}

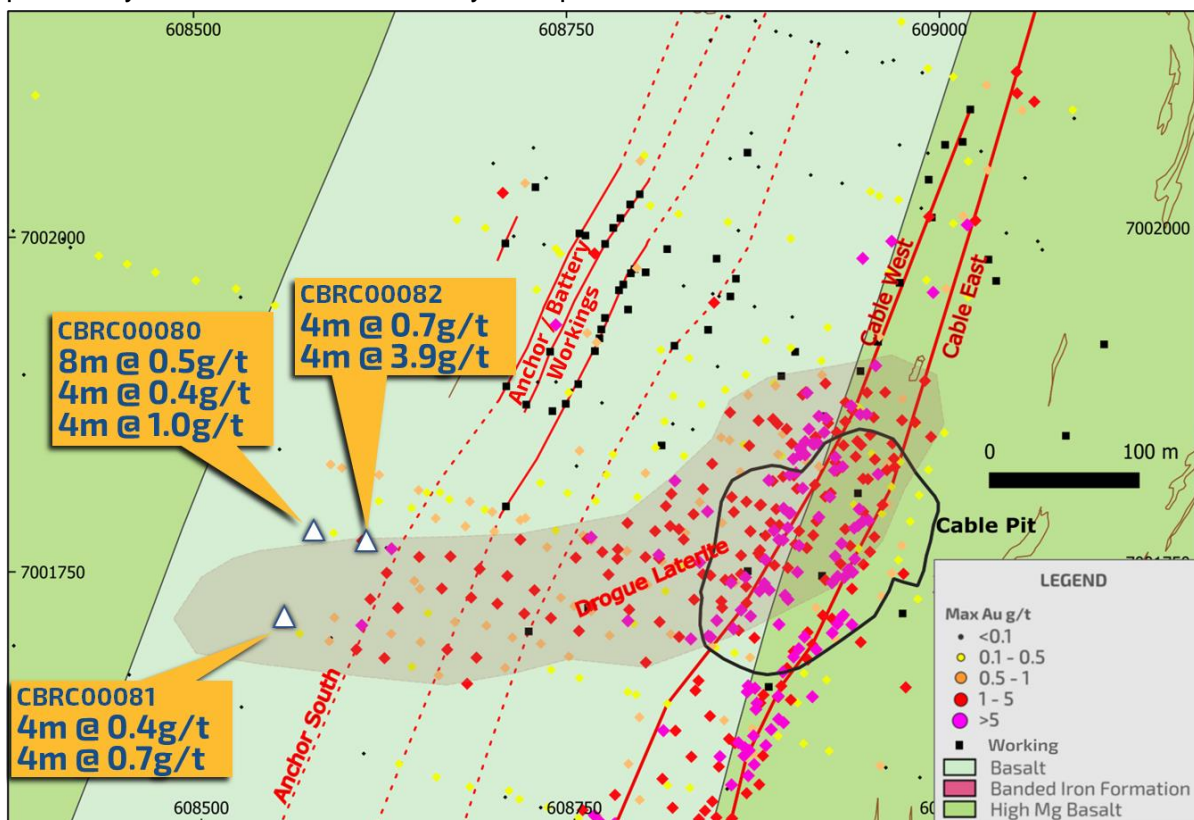


Figure 5 - Anchor South Collar Map

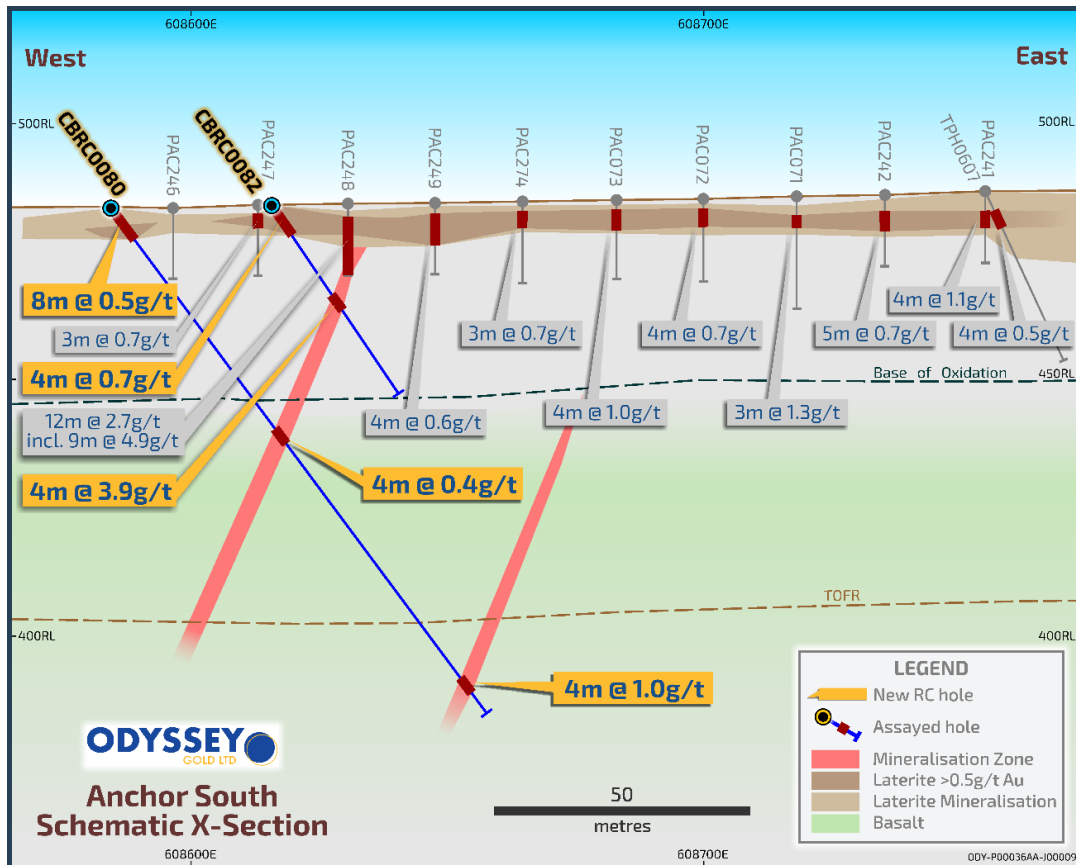


Figure 6 - Anchor South cross section 7001700mN

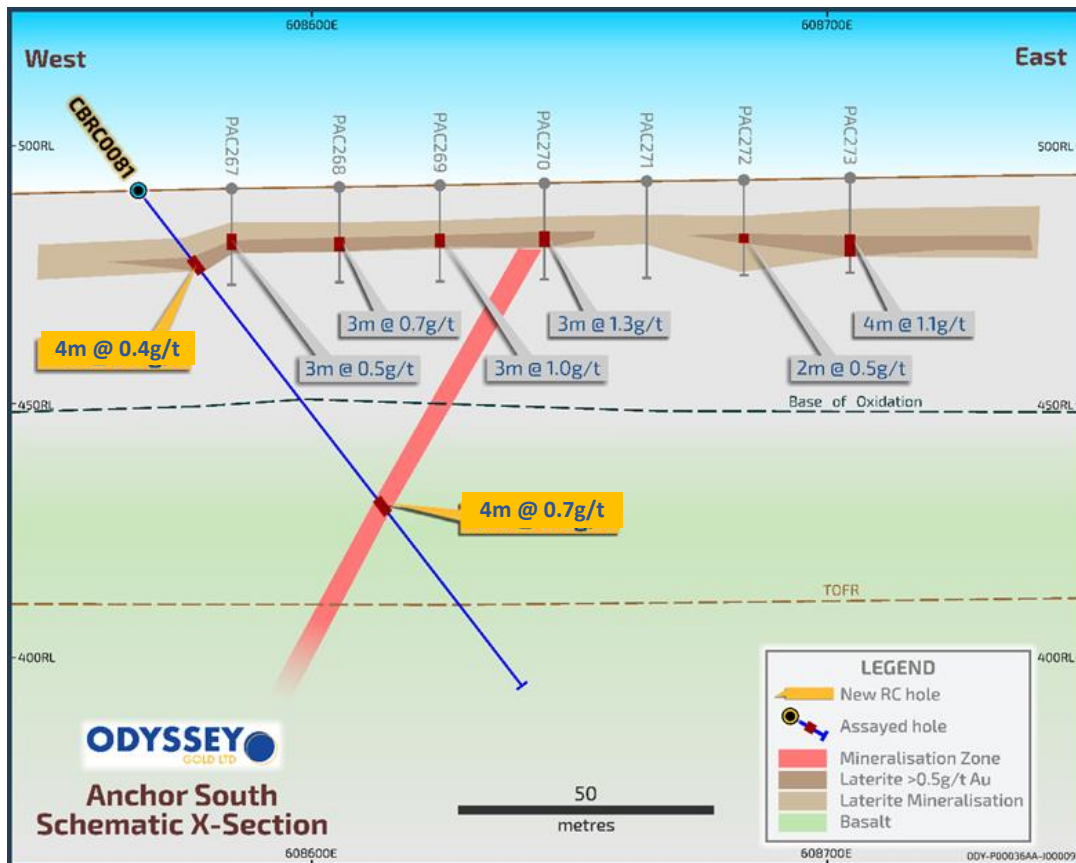


Figure 7 - Anchor South cross section 7001770mN

These holes confirm the extension of the Anchor vein system to the south of the old mine and the down dip continuity of veining below the laterite. RAB drilling is planned to drill southern extension of the laterite and veins prior to further RC drilling. At least three parallel veins were mined at the Trilby-Anchor Mine 150m to the north. It is likely these extend further to the south, and that additional parallel veins are present. To the east and west of the recent RC drilling

Future Work

Future RC and diamond drilling at the Highway Zone is planned to extend the mineralisation on 80m spaced sections towards the northeast. Several of the recently drilled holes require extensions based on the revised strike of mineralisation. Oxide mineralisation will be drilled up dip of the existing RC intersections. Planning of RAB drilling is underway

Project Background

Odyssey's Tuckanarra Project is part of the prolific Murchison Goldfields. The Murchison Goldfields are host to a +35Moz gold endowment (historic production plus current resources).

Five shallow oxide pits were mined on the Tuckanarra Project in the 1990's producing 101.1koz at an average grade of 3.9g/t Au. Additionally, ~40koz were produced at an average grade of 7.2g/t Au from the only modern underground mine on the Project. The Project is located between Meekatharra and Mount Magnet, proximal to multiple gold processing plants, along the Great Northern Highway.

Previous resource development and open pit mining was focused on laterite and oxide mineralisation due to low gold prices. Odyssey has recognised the potential for significant strike and plunge extensions to the mineralisation. The potential has been demonstrated in 2021 along over 2km of strike with results from drilling including 2.3m @ 600.2g/t Au from 249m^x, 24m @ 4.5g/t Au from 179m^{xi} and 7m @ 14.3g/t Au from 112m^{xii}

Odyssey's strategy is to rapidly determine the extents of the gold system and to define high grade shoots identified with RC and diamond drilling.

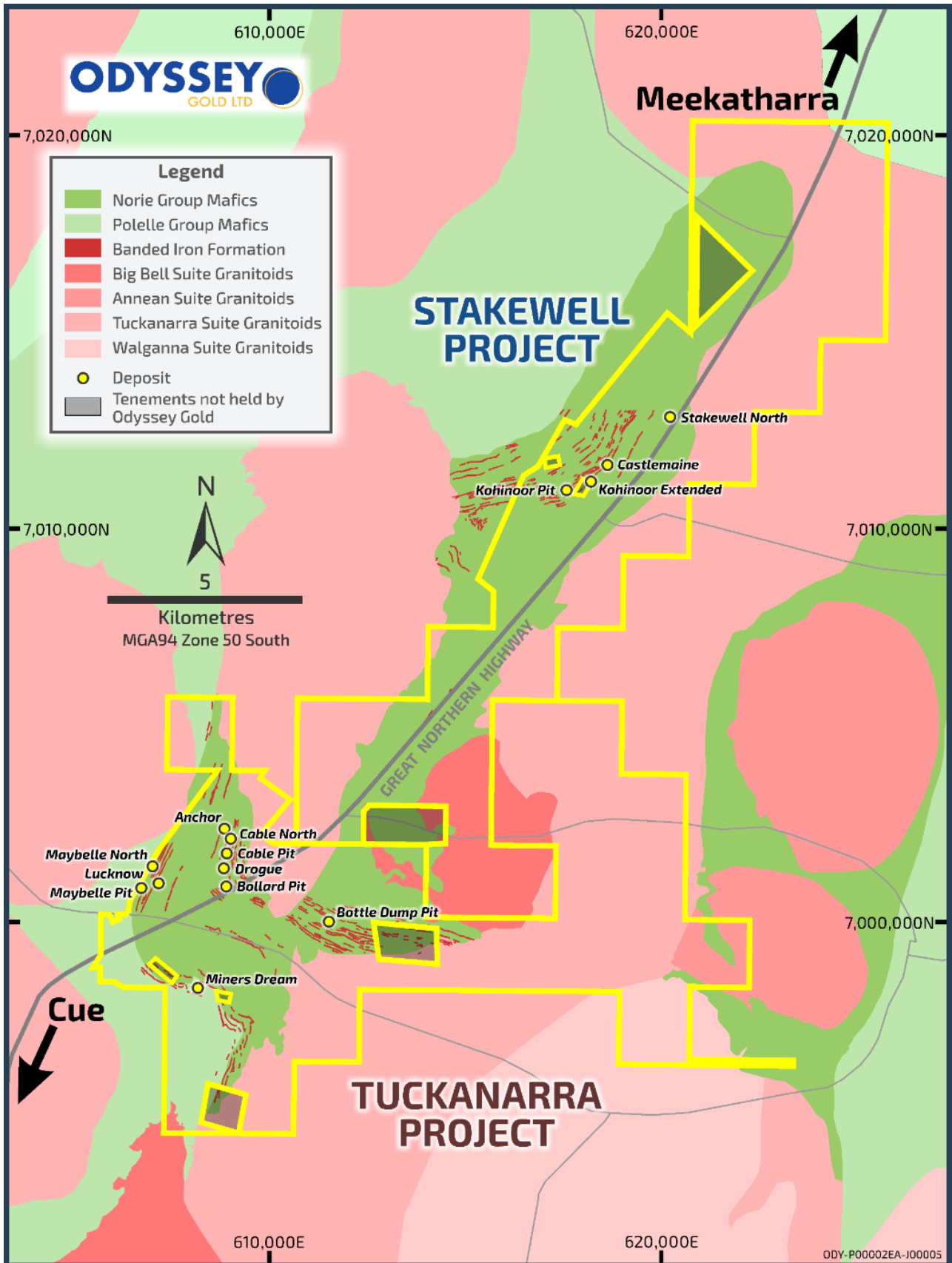


Figure 8. Tuckanarra Project Area Prospect Map

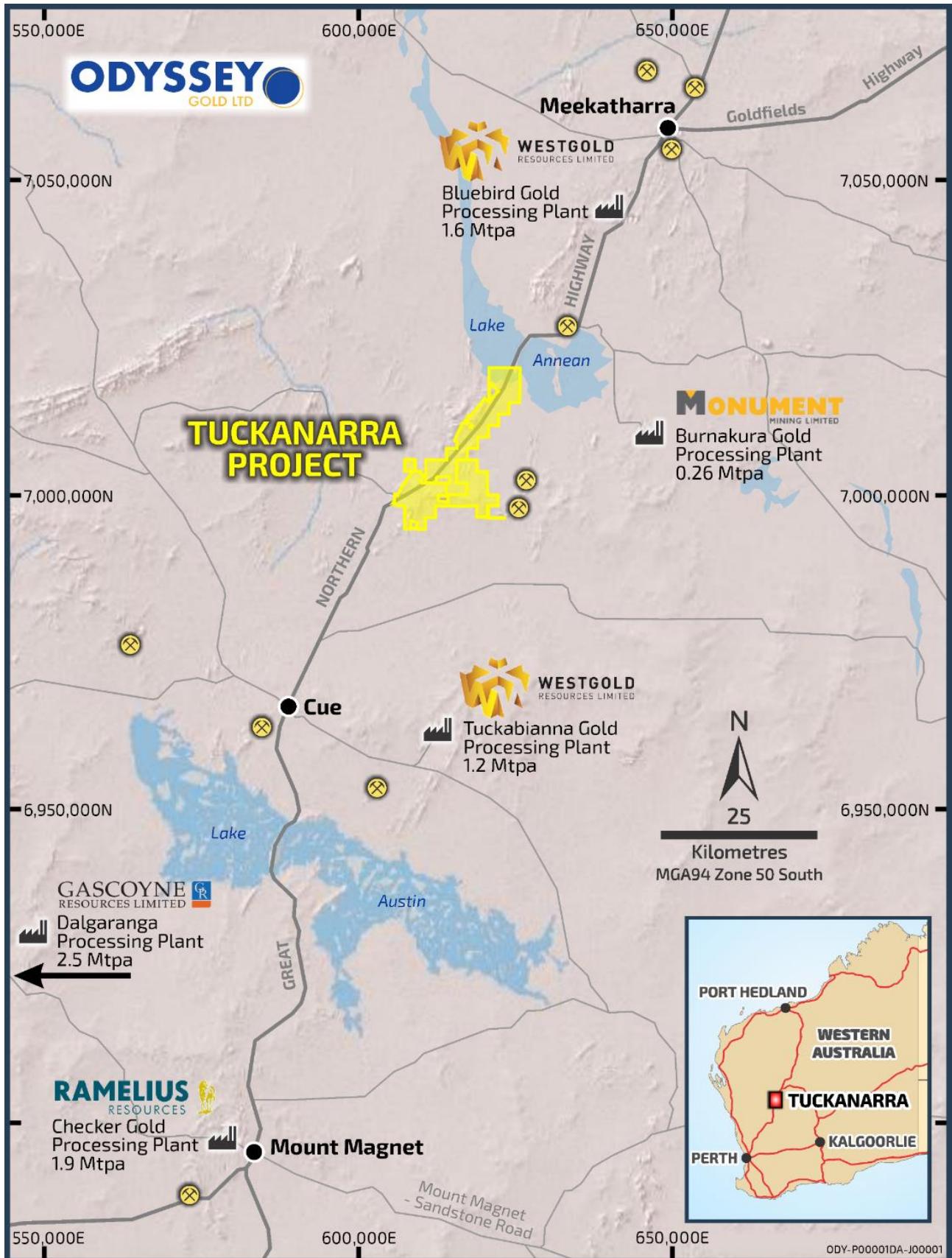


Figure 9 - Tuckanarra Project Location Map

APPENDIX 1 - DRILL INTERCEPT TABLES

Table 1. Drillhole details for reported Tuckanarra Project results.

Hole ID	Type	East	North	RL	Depth (m)	Dip	Azimuth	Target
CBRC0056	RC	608990	7000676	487	250	-55	93	Highway
CBRC0080	RC	608578	7001776	487	136	-55	120	Anchor Sth
CBRC0081	RC	608555	7001711	485	125	-58	109	Anchor Sth
CBRC0082	RC	608612	7001770	488	50	-57	106	Anchor Sth
CBRC0111	RC	609007	7000681	480	200	-56	26	Highway

MGA94 Zone 50 Grid

Table 2 – Drill Results from the Tuckanarra Project

Hole ID	From(m)	Length (m)	Au g/t	Structure
CBRC0056	127	1	1.8	
CBRC0056	136	2	0.8	
CBRC0056	170	5	3.8	Highway Zone
CBRC0056	180	13	3.7	Highway Zone
CBRC0056	199	11	7.8	Highway Zone
including	199	6	13.8	Highway Zone
and	203	1	64.1	Highway Zone
CBRC0056	237	7	1.7	
CBRC0111	40	8	1.2	Oxide
CBRC0111	80	6	1.2	Bollard
CBRC0111	115	2	1.5	Bollard
CBRC0080	0	8*	0.5	Anchor South Vein
CBRC0080	40	4*	0.4	Anchor South Vein
CBRC0080	128	4*	1.0	Anchor South Vein
CBRC0081	12	4*	0.4	Laterite
CBRC0081	72	4*	0.7	Anchor South vein
CBRC0082	0	4*	0.7	Laterite
CBRC0082	24	4*	3.9	Anchor South vein

Results are reported > 2m @ 0.5g/t and/or where geologically significant.

* Intersections containing 4m composites.

APPENDIX 2 - JORC Code, 2012 Edition – Table 1

Section 1 Sampling Techniques and Data

(Criteria in this section apply to all succeeding sections.)

Criteria	JORC Code explanation	Commentary
Sampling techniques	<i>Nature and quality of sampling (eg cut channels, random chips, or specific specialised industry standard measurement tools appropriate to the minerals under investigation, such as down hole gamma sondes, or handheld XRF instruments, etc). These examples should not be taken as limiting the broad meaning of sampling.</i>	Sampling methods used for samples in this release are: 4m composite samples - Reverse Circulation (RC) drilling. These samples are split using a cone splitter into calico bags representing the 1m interval. Hole diameter starting at 5 ¼ inch diameter reducing as the hole progresses. 4m composites – RC composites are generated by spearing the reject from the generation which has been collected in green plastic bags or laid on the ground in piles representing 1m. Individual samples weigh less than 5kg to ensure total preparation at the laboratory pulverization stage. The sample size is deemed appropriate for the grain size of the material being sampled

Criteria	JORC Code explanation	Commentary
	<p>Include reference to measures taken to ensure sample representation and the appropriate calibration of any measurement tools or systems used.</p>	<p>The collar locations of the drill holes were surveyed using a handheld GPS. Sampling was carried out under the ODY protocols and QAQC. See further details below. Sampling is supervised by a geologist and/or trained field technician.</p>
	<p>Aspects of the determination of mineralisation that are Material to the Public Report.</p> <p>In cases where 'industry standard' work has been done this would be relatively simple (eg 'reverse circulation drilling was used to obtain 1 m samples from which 3 kg was pulverised to produce a 30g charge for fire assay'). In other cases, more explanation may be required, such as where there is coarse gold that has inherent sampling problems. Unusual commodities or mineralisation types (eg submarine nodules) may warrant disclosure of detailed information.</p>	<p>The RC samples were split at the rig and collected in calico bags at 1m intervals. 4m composites were collected by spearing retained samples at 1m intervals and combining into 4m composites. 1m samples and 4m composites are approximately 3-5kg in weight. For intervals of expected mineralisation the 1m samples are submitted immediately following drilling.</p> <p>Where the 4m composite grade returned is greater than 0.5ppm Au, 1m RC samples for each of the metres were submitted to MinAnalytical Laboratory Perth where the sample was crushed, split, and 400-600g sample assayed by Photon Assay method for Au. Samples are sent to the NATA accredited MinAnalytical Laboratory in Canning Vale, Perth and analysed via PhotonAssay technique (method code PAAU2) along with quality control samples. Individual samples are assayed for gold after drying and crushing to nominally 85% passing 2mm and a 400-600g split taken for PhotonAssay). The PhotonAssay technique was developed by CSIRO and Chrysos Corporation and is a fast, chemical free non-destructive, alternative using high-energy X-rays to traditional fire assay and uses a significantly larger sample size (500g v's 50g for fire assay). This technique is accredited by the National Association of Testing Authorities (NATA). Coarse gold is observed. Repeat assays are routinely taken of elevated gold samples.</p>
Drilling techniques	<p>Drill type (eg core, reverse circulation, open-hole hammer, rotary air blast, auger, Bangka, sonic, etc) and details (eg core diameter, triple or standard tube, depth of diamond tails, face-sampling bit or other type, whether core is oriented and if so, by what method, etc).</p>	<p>RC drilling has been undertaken by Strike Drilling. A face sampling hammer is used. Drill hole diameter typically starts at 5 ¾ before reducing as the RC bit wears downhole.</p> <p>Downhole surveys for RC drilling are recorded using a True North seeking GYRO survey tool.</p>
Drill sample recovery	<p>Method of recording and assessing core and chip sample recoveries and results assessed.</p>	<p>The majority of the samples are reported to be dry. Ground water ingress occurred in some holes at the rod change but overall, the holes were kept dry. Typically, drilling operators ensured water was lifted from the face of the hole at each rod change to ensure water did not interfere with drilling and to make sure samples were collected dry. Sample recoveries are recorded by the field technician or geologist based on visual estimates. Drilling at Anchor was terminated early due to the presence of excess water. This did not impact intervals of mineralisation.</p>
	<p>Measures taken to maximise sample recovery and ensure representative nature of the samples.</p>	<p>Drilling is carried out orthogonal to the mineralisation to get representative samples of the mineralisation. Standard practices for RC and diamond drilling are used.</p>
	<p>Whether a relationship exists between sample recovery and grade and whether sample bias may have occurred due to preferential loss/gain of fine/coarse material.</p>	<p>No relationship between recovery and grade have been identified. This is not seen to be a material risk with the drilling methods and approach to sampling being undertaken.</p>
Logging	<p>Whether core and chip samples have been geologically and geotechnically logged to a level of detail to support appropriate Mineral Resource estimation, mining studies and metallurgical studies.</p>	<p>All RC chips is logged onsite by geologists to a level of detail to support future mineral resource estimation, mining studies and metallurgical studies.</p>
	<p>Whether logging is qualitative or quantitative in nature. Core (or costean, channel, etc) photography.</p>	<p>Logging is qualitative and records lithology, grain size, texture, weathering, structure, alteration, veining and sulphides. Core and chips are digitally photographed. Chip trays are routinely scanned with pXRF</p>
	<p>The total length and percentage of the relevant intersections logged</p>	<p>All holes are logged in full, including the reported intersections.</p>
Sub-sampling techniques and sample preparation	<p>If core, whether cut or sawn and whether quarter, half or all core taken.</p>	<p>No core this announcement.</p>
	<p>If non-core, whether riffled, tube sampled, rotary split, etc and whether sampled wet or dry.</p>	<p>1m RC samples are split using a cone splitter. Composite RC samples were collected by spear from the reject from the riffle splitter by spearing and combined into 4m composite samples. Original 1m samples collected off the rig were submitted for 4m intervals which returned Au>0.5ppm in the composite sample. All</p>

Criteria	JORC Code explanation	Commentary
		samples are dry. Drilling of a hole is terminated if dry samples cannot be produced.
	<i>For all sample types, the nature, quality and appropriateness of the sample preparation technique.</i>	4m composite RC samples were submitted to MinAnalytical Laboratory Perth where a 400-600g sample was assayed by Photon Assay. The sample preparation procedures carried out are considered acceptable. All coarse and pulp rejects are retained on site.
	<i>Quality control procedures adopted for all sub-sampling stages to maximise representation of samples.</i>	Sampling is supervised by a geologist and sample recovery and moisture content noted. A checklist to ensure ongoing checking for sample quality and to avoid contamination has been implemented. Standard samples are typically inserted on a 1/20 ratio with a increased proportion targeted to the expected zone of mineralisation.
	<i>Measures taken to ensure that the sampling is representative of the in situ material collected, including for instance results for field duplicate/second-half sampling.</i>	Samples are inspected for contamination. The RC cyclone is routinely cleaned. Field duplicates are not currently collected. 4m composites have been compared to 1m samples with good correlation.
	<i>Whether sample sizes are appropriate to the grain size of the material being sampled.</i>	Sample sizes are considered appropriate to give an indication of mineralisation. Once a meaningful population of samples is collected per sample domain an assessment will be made of the appropriate weight and number of samples to allow the classification of mineral resources.
Quality of assay data and laboratory tests	<i>The nature, quality and appropriateness of the assaying and laboratory procedures used and whether the technique is considered partial or total.</i>	All samples were submitted to MinAnalytical Laboratory Perth where a 400-600g sample was assayed by Photon Assay for gold. The larger sample weight assists in producing a more accurate evaluation of the grade of the mineral domain at the pre-resource stage when compared to 30g fire assay.
	<i>For geophysical tools, spectrometers, handheld XRF instruments, etc, the parameters used in determining the analysis including instrument make and model, reading times, calibrations factors applied and their derivation, etc.</i>	No geophysical surveys reported in this release.
	<i>Nature of quality control procedures adopted (eg standards, blanks, duplicates, external laboratory checks) and whether acceptable levels of accuracy (ie lack of bias) and precision have been established.</i>	Certified reference material (CRM) samples sourced from Geostats and were inserted every 25 samples and Blank samples. External lab check assays have not been completed for the current program.
Verification of sampling and assaying	<i>The verification of significant intersections by either independent or alternative company personnel.</i>	All assays are reviewed by Odyssey Gold and significant intercepts are calculated as composites and reported using a nominal 0.5g/t Au cut-off grade; however, intercepts may be reported within sub-grade mineralisation if dictated by a geological domain. A maximum of 3m consecutive internal waste is nominally allowed in composites. All significant intercepts are checked by the Competent Person. Previous announced intersections may vary with a change in interpretation. A re-announcement of previous results will not occur unless the Competent Person decides the change is material. The competent person routinely inspects drilling, and chips and core to ensure correlation with assay results.
	<i>The use of twinned holes.</i>	No dedicated twin holes have been completed in this program. Due to hole deviation, and drilling to a greater depth in areas previously drilled, twinning of historic drillholes has been achieved.
	<i>Documentation of primary data, data entry procedures, data verification, data storage (physical and electronic) protocols.</i>	All drill hole logging is completed on digital logging templates with built-in validation. Logging spreadsheets are uploaded and validated in a central MS Access database. All original logging spreadsheets are also kept in archive. Duplicated copies of the database and drillhole data is routinely backed up through cloud server backups. Logging of key intersections has been reviewed by the Geology Manager / Managing Director.
	<i>Discuss any adjustment to assay data.</i>	No assay data was adjusted.
Location of data points	<i>Accuracy and quality of surveys used to locate drill holes (collar and down-hole surveys), trenches, mine workings and other locations used in Mineral Resource estimation.</i>	Drill hole collars are located using handheld GPS with 3-5m accuracy. Downhole surveys for both RC and DDH drilling are recorded using a True North seeking GYRO survey tool. Subsequent to drilling previous programs have had collars

Criteria	JORC Code explanation	Commentary
		surveyed by a licensed surveyor. This is planned for the end of the current RC program.
	<i>Specification of the grid system used.</i>	The project currently uses the MGA94, Zone 50 grid system.
	<i>Quality and adequacy of topographic control.</i>	The site topographic surveys including the pit surveys match well with the drill hole collars. Detailed aerial photography over the region has aided on locating historic drillhole collars. An updated digital terrain model has been generated from a recent UAV drone survey which will allow a review of collar RLs.
Data spacing and distribution	<i>Data spacing for reporting of Exploration Results.</i>	Drill hole spacing for the 2021 drill program is variable as most drilling to date is either first pass drilling of new exploration targets or step-out brownfields exploration targeting along strike from existing Resources. In general, drill hole collar spacing on new exploration traverses has been between 20-100m. The Great Northern Highway traversing the property and open pit restrict access which results in drilling angles not always being orthogonal to the structures and holes not being on a regular grid..
	<i>Whether the data spacing and distribution is sufficient to establish the degree of geological and grade continuity appropriate for the Mineral Resource and Ore Reserve estimation procedure(s) and classifications applied.</i>	Drilling is on a spacing which is sufficient to test the grade continuity of mineralisation for this style of mineralisation. The current data set is considered potentially appropriate for use in a future Mineral Resource. A resource has previously been declared for the deposits being drilled.
	<i>Whether sample compositing has been applied.</i>	4m sample composites are used. Where reported intervals are composites this is disclosed in the announcement tables. All significant 4m composites are subsequently replaced with the intersections from 1m samples.
Orientation of data in relation to geological structure	<i>Whether the orientation of sampling achieves unbiased sampling of possible structures and the extent to which this is known, considering the deposit type.</i>	It is considered the orientation of the bulk of the drilling and sampling suitably captures the dominant “structure” of the style of mineralisation at Tuckanarra.
	<i>If the relationship between the drilling orientation and the orientation of key mineralised structures is considered to have introduced a sampling bias, this should be assessed and reported if material.</i>	The bulk of the intercepts appear to be orthogonal to the mineralisation +/- 25 degrees unless otherwise stated in the intercepts table. Further work will be undertaken to analyse this in the future as exploration works progress. Assay intercepts are stated as down-hole lengths. Previous resource modelled work has highlighted bias in holes drilled down the mineralisation.
Sample security	<i>The measures taken to ensure sample security.</i>	RC samples are collected in prenumbered calico bags. Samples are delivered to the lab directly by Odyssey personnel or freighted via an independent freight provider.
Audits or reviews	<i>The results of any audits or reviews of sampling techniques and data.</i>	All QAQC data is reviewed to ensure quality of assays; batches containing standards that report greater than 2 standard deviations from expected values are re-assayed.

Section 2 Reporting of Exploration Results

(Criteria listed in the preceding section also apply to this section.)

Criteria	JORC Code explanation	Commentary
Mineral tenement and land tenure status	<i>Type, reference name/number, location and ownership including agreements or material issues with third parties such as joint ventures, partnerships, overriding royalties, native title interests, historical sites, wilderness or national park and environmental settings.</i>	Odyssey's subsidiary, Tuckanarra Resources Pty Ltd, owns an 80% interest in the Tuckanarra Project, comprising two Exploration Licences (E20/782-783), one Mining Licence (M20/527), and seven Prospecting Licences. The Great Northern Highway and a historic railway reserve traverse the property and the Highway Zone target, and the road may need relocating in the future to allow open pit mining. No previously declared resources are impacted by the highway.
	<i>The security of the tenure held at the time of reporting along with any known impediments to obtaining a licence to operate in the area.</i>	The tenement package is understood to be in good standing with the WA DMIRS.
Exploration done by other parties	<i>Acknowledgment and appraisal of exploration by other parties.</i>	Refer to the body of the report and to previous announcements.
Geology	<i>Deposit type, geological setting and style of mineralisation.</i>	<p>The Project area is located within the Meekatharra-Wyldgee Greenstone belt within the north-eastern Murchison Domain. The majority of greenstones within the Meekatharra-Wyldgee belt have been stratigraphically placed within the Polelle Group and the Norie Group of the Murchison Supergroup.</p> <p>The Project area covers Archean basement rocks assigned to the 2815-2805 Ma basal Norie group of the Murchison Supergroup, which covers the eastern margin of the Meekatharra-Wyldgee greenstone belt. The Norie group comprises a thick succession of pillowed and massive tholeiitic basalts of the Muroulli Basalt, and conformably overlying and mafic schist and felsic volcanoclastics with interbedded BIF and felsic volcanic rocks of the Yaloginda Formation (Van Kranendonk et al, 2013). These rocks are folded around the south-plunging Besley Anticline. Adjacent to these rocks are the mafic sequences of the Meekatharra Formation (Polelle Group).</p> <p>Granitoids in the Project area comprise of the Jungar Suite and Annean Supersuite to the east and the Munarra Monzogranite of the Tuckanarra Suite to the west. The Jungar Suite comprises of foliated to strongly sheared K-feldspar-porphyritic monzogranites. These rocks are characterized by strong shear fabrics that suggest they may have been emplaced during, or just before, shearing. The Annean Supersuite includes hornblende tonalite and monzogranitic rocks. The Tuckanarra Suite consists of strongly foliated and locally magmatically layered granodiorite to monzogranitic rocks.</p> <p>The Project is situated within the 'Meekatharra structural zone', a major regional, NE-trending shear dominated zone, about 50 to 60km wide, stretching from Meekatharra through the Cue region as far south as Mount Magnet. This major shear zone is dominated by north and northeast-trending folds and shears (e.g. Kohinoor shear). The Mt Magnet fault is the major east-bounding structure of the Meekatharra structural zone.</p> <p>The mineralised zones of the Project are located in the Tuckanarra greenstone belt comprising a series of mafic and inter-banded mafic and iron formations, with a variable component of clastic sediments, (greywackes and minor shales). The sequence is folded into a south-westerly plunging anticline with a well-developed axial plane cleavage and numerous fractures, bedding parallel faults and shears. The belt extends northwards to Stake Well and east towards the Reedys mining centre.</p> <p>The area has four large open pits, extensive minor gold workings, and prospecting pits principally associated with mafic lithologies and Altered Ferruginous Transitional (AFT) and Altered Ferruginous Fresh (AFF) material which were originally banded iron formations. The magnetite content within the AFT/AFF's has been destroyed and predominantly altered to an assemblage of hematite with the relic structure of the banded iron intact.</p>

Criteria	JORC Code explanation	Commentary
		<p>Where mineralised veins intersect major competency contrasts such as high magnesium basalt or AFT/AFF, veining becomes layer parallel resulting in larger deposits such as the Bollard and Cable deposits.</p> <p>A number of styles of gold mineralisation have been identified in the area including:</p> <ul style="list-style-type: none"> • Mineralised AFT and AFF material ± quartz veining (Cable East, Cable Central); • Quartz veins ± altered basalts (Cable West, Lucknow, Maybelle, Maybelle North, Miners' Dream); and • Gold mineralisation within laterite (Anchor, Bollard, Drogue). <p>Below the base of complete oxidation (~40m) gold mineralisation is commonly seen associated with quartz-pyrrhotite veins and pyrrhotite replacement of the host rocks. Prospective models for the discovery of additional gold deposits in the area are related to the intersection of shear zones with prospective lithologies.</p>
<p>Drill hole Information</p>	<p><i>A summary of all information material to the understanding of the exploration results including a tabulation of the following information for all Material drill holes:</i></p> <ul style="list-style-type: none"> ▪ easting and northing of the drill hole collar ▪ elevation or RL (Reduced Level – elevation above sea level in metres) of the drill hole collar ▪ dip and azimuth of the hole ▪ down hole length and interception depth ▪ hole length. <p><i>If the exclusion of this information is justified on the basis that the information is not Material and this exclusion does not detract from the understanding of the report, the Competent Person should clearly explain why this is the case.</i></p>	<p>Drill hole details are provided in Appendix 1. Results that are interpreted to be discontinuous, or outside the areas of interest may not be highlighted in the announcement.</p>
<p>Data aggregation methods</p>	<p><i>In reporting Exploration Results, weighting averaging techniques, maximum and/or minimum grade truncations (eg cutting of high grades) and cut-off grades are usually Material and should be stated.</i></p> <p><i>Where aggregate intercepts incorporate short lengths of high grade results and longer lengths of low grade results, the procedure used for such aggregation should be stated and some typical examples of such aggregations should be shown in detail.</i></p> <p><i>The assumptions used for any reporting of metal equivalent values should be clearly stated.</i></p>	<p>Significant intercepts are reported as down-hole length-weighted averages of grades above a nominal 0.5 g/t Au; or according to geological/mineralised units in occasional cases where warranted. No top cuts have been applied to the reporting of the assay results.</p> <p>Higher grade intervals are included in the reported grade intervals; and have also been split out on a case-by-case basis where relevant.</p> <p>No metal equivalent values are used.</p>
<p>Relationship between mineralisation widths and intercept lengths</p>	<p><i>These relationships are particularly important in the reporting of Exploration Results.</i></p> <p><i>If the geometry of the mineralisation with respect to the drill hole angle is known, its nature should be reported.</i></p> <p><i>If it is not known and only the down hole lengths are reported, there should be a clear statement to this effect (eg 'down hole length, true width not known').</i></p>	<p>The bulk of the exploration drilling was conducted so that results would be close to orthogonal to the mineralisation as understood at the time; however, the true relationship to the mineralisation is not accurately determined. Due to restrictions of access, such as from historic open pits, the drill angle may be compromised. Cross sections are included in the announcement to illustrate the interpreted orientation of the drillhole to the mineralisation.</p> <p>True widths of intersections in this announcement are interpreted to be 50-80% of the downhole width.</p>

Criteria	JORC Code explanation	Commentary
Diagrams	<i>Appropriate maps and sections (with scales) and tabulations of intercepts should be included for any significant discovery being reported. These should include, but not be limited to a plan view of drill hole collar locations and appropriate sectional views.</i>	Refer to Figures in the body of this announcement and Appendix 1.
Balanced reporting	<i>Where comprehensive reporting of all Exploration Results is not practicable, representative reporting of both low and high grades and/or widths should be practiced to avoid misleading reporting of Exploration Results.</i>	Balanced reporting has been used. The exploration results should be considered indicative of mineralisation styles in the region. Exploration results stated indicated highlights of the drilling and are not meant to represent prospect scale mineralisation. As the projects are brownfields exploration targets, and there are large numbers of holes drilled over the region, it is considered appropriate to illustrate mineralised and non-mineralised drill holes by the use of diagrams, with reference to the table of significant intercepts.
Other substantive exploration data	<i>Other exploration data, if meaningful and material, should be reported including (but not limited to): geological observations; geophysical survey results; geochemical survey results; bulk samples – size and method of treatment; metallurgical test results; bulk density, groundwater, geotechnical and rock characteristics; potential deleterious or contaminating substances.</i>	No other meaningful data is required to be presented other than what has been presented in the body of this announcement. The reader is referred to the Independent Geologists Report in the Odyssey Gold Prospectus.
Further work	<i>The nature and scale of planned further work (eg tests for lateral extensions or depth extensions or large-scale step-out drilling). Diagrams clearly highlighting the areas of possible extensions, including the main geological interpretations and future drilling areas, provided this information is not commercially sensitive.</i>	Additional drilling is planned to test extensions at the Cable, Bollard, Highway Zone, and other targets in the Tuckanarra and Stakewell Projects. Drilling is completed with a goal of growing mineral resources, and then making a strategic assessment of the best approach to maximising the value of the resources discovered.

COMPETENT PERSONS STATEMENT

The information in this announcement that relates to Exploration Results is based on, and fairly represents, information compiled or reviewed by Matt Briggs, who is a Competent Person. Mr Briggs is a Member of the Australasian Institute of Mining and Metallurgy and is a full-time employee of Odyssey and is a holder of options and performance rights in Odyssey Gold Limited. Mr Briggs has sufficient experience that is relevant to exploration and the style of mineralisation and type of deposit under consideration, and to the activity being undertaken, to qualify as a Competent Persons as defined in the 2012 Edition of the ‘Australasian Code for Reporting of Exploration Results, Mineral Resources and Ore Reserves’ (JORC Code). Mr Briggs consents to the inclusion in the announcement of the matters based on their information in the form and context in which it appears.

FORWARD LOOKING STATEMENTS

Statements regarding plans with respect to Odyssey’s project are forward-looking statements. There can be no assurance that the Company’s plans for development of its projects will proceed as currently expected. These forward-looking statements are based on the Company’s expectations and beliefs concerning future events. Forward looking statements are necessarily subject to risks, uncertainties and other factors, many of which are outside the control of the Company, which could cause actual results to differ materially from such statements. The Company makes no undertaking to subsequently update or revise the forward-looking statements made in this announcement, to reflect the circumstances or events after the date of that announcement.

This ASX Announcement has been approved in accordance with the Company’s published continuous disclosure policy and authorised for release by the Board of Directors.

ⁱ Refer ASX announcement dated 27 November 2020

- ii Refer ASX announcement dated 2 November 2021
- iii Historic Result Refer ASX Announcement dated 11 May 2022
- iv Historic Result Refer ASX Announcement dated 11 May 2022
- v Refer ASX announcement dated 19 April 2022
- vi Refer ASX announcement dated 20 January 2021
- vii Refer ASX announcement dated 27 November 2020
- viii Refer ASX announcement dated 22 October 2020
- ix Refer POZ ASX announcement dated 22 March 2013
- x Refer ASX announcement dated 2 July 2021
- xi Refer ASX announcement dated 20 January 2021
- xii Refer ASX announcement dated 2 November 2021