



# EXPLORING IN A PROVEN MULTI-MILLION OUNCE GOLD SYSTEM IN NEWFOUNDLAND, CANADA

June 2022



ASX: MZZ  
OTCQX: MZZMF  
FSE: MA3

# DISCLAIMER



## Disclaimer and Forward Looking Statements

This presentation is not a prospectus nor an offer of securities for subscription or sale in any jurisdiction nor a securities recommendation. The information in this presentation is an overview and does not contain all information necessary for investment decisions. In making investment decisions, investors should rely on their own examination of Matador Mining Limited (Matador or the Company) and consult with their own legal, tax, business and/or financial advisers in connection with any acquisition of securities or interest in the Company. The information contained in this presentation has been prepared in good faith by the Company. However, no representation or warranty, express or implied, is made as to the completeness or adequacy of any statements, estimates, opinions or other information contained in this presentation. To the maximum extent permitted by law, the Company, its directors, officers, employees and agents disclaim liability for any loss or damage which may be suffered by any person through the use of, or reliance on, anything contained in or omitted from this presentation. Certain information in this presentation refers to the intentions of the Company, but these are not intended to be forecasts, forward looking statements, or statements about future matters for the purposes of the Corporations Act 2001 (Cth) or any other applicable law. The occurrence of events in the future are subject to risks, uncertainties and other factors that may alter the Company's actual results, performance or achievements to differ from those referred to in this presentation to occur as contemplated. The presentation contains only a synopsis of more detailed information available in relation to the matters described in this document and accordingly no reliance may be placed for any purpose whatsoever on the sufficiency or completeness of such information and to do so could potentially expose you to a significant risk of losing any of the property invested by you or incurring by you of additional liability. Recipients of this presentation should conduct their own investigation, evaluation and analysis of the business, data and property described in this presentation. In particular, any estimates or projections or opinions contained herein necessarily involve significant elements of subjective judgment, analysis and assumptions and you should satisfy yourself in relation to such matters.

## Mineral Resources

The information in this Presentation that relates to the Mineral Resource estimate for the Cape Ray Gold Project was announced on 6 May 2020. Matador confirms that it is not aware of any new information or data that materially affects the information included in the announcement of 6 May 2020 and that all material assumptions and technical parameters underpinning the Mineral Resource estimate in that announcement continue to apply and have not materially changed.

## Scoping Study

The information in this Presentation that relates to the Scoping Study on the Cape Ray Gold Project was announced on 6 May 2020. Matador confirms that all material assumptions underpinning the production target and forecast financial information included in that announcement continue to apply and have not materially changed.

## Exploration Results

The information in this Presentation that relates to exploration results at the Cape Ray Gold Project was announced on 6 October 2020, 29 October 2020, 11 November 2020, 16 December 2020, 1 February 2021, 9 February 2021, 17 February 2021, 17 March 2021, 12 May 2021, 3 June 2021, 11 August 2021, 26 August 2021, 7 September 2021, 21 September 2021, 12 October 2021, 30 November 2021, 14 December 2021, 7 February 2022, 1 March 2022, 18 March 2022, 20 April 2022, 26 May 2022, 2 June 2022, 6 June 2022 and 8 June 2022. Matador confirms that it is not aware of any new information or data that materially affects the information included in those announcements.



# STRATEGICALLY PLACED IN NEWFOUNDLAND, CANADA



## SOLID EXISTING FOUNDATION WITH NEW VISION & COMMITMENT TO DELIVER SHAREHOLDER VALUE

### Existing high-grade, shallow mineral resource

One of the highest-grade undeveloped resources in a top-tier jurisdiction<sup>(1)</sup>

- Resource – 837,000oz Au at 2g/t with 96% < 200m from surface<sup>(2)</sup>
- Underpins market capitalisation

### Significant tenement package on two major gold structures

#### Cape Ray Shear Zone

- 120km of continuous strike along proven multi-million oz gold structure
- ~ 88% of strike (105km) with only 25 diamond drill holes

#### Hermitage Flexure

- 27 kilometres of continuous strike
- Large area of anomalous gold, arsenic and antimony

### Final frontier for mining in a tier-one jurisdiction

Newfoundland, Canada – 25km from an established town and deep-water port

- Major infrastructure: roads, hydro power, airport
- Strong government and stakeholder support

### CAPITAL STRUCTURE

MARKET  
CAPITALISATION<sup>(3)</sup>

**A\$35m**

CASH <sup>(4)</sup>

**A\$7m**

SHARES OUTSTANDING<sup>(4)</sup>

**217m**

OPTIONS<sup>(4)</sup>

**29m**

### TOP HOLDERS<sup>(3)</sup>

CI Financial	Toronto	5.8%
Franklin Resources	San Fran	4.9%
Acorn Capital	Melbourne	4.4%
Retail	Various	64%

1. Average head grade Yr 1 – 4 – 2.6g/t Au (Scoping Study – May 2020)

2. ASX announcement 6 May 2020

3. As at 6 Jun 2022

4. As at 31 Mar 2022

# TOP CORPORATE PRIORITIES



## FOCUSED ON SIGNIFICANT RESOURCE GROWTHS TO MAXIMISE SHAREHOLDER RETURNS

- 1 ADVANCE GREENFIELD EXPLORATION TARGETS AND COMMENCE GREENFIELD DRILLING
- 2 ENHANCE THE CAPITAL STRUCTURE TO EXPAND ACCESS TO GLOBAL CAPITAL MARKETS
- 3 TAKE STRATEGIC AND PRUDENT APPROACH TO EXTERNAL CONSOLIDATION
- 4 SUBMIT THE ENVIRONMENT IMPACT STATEMENT TO FURTHER SOLIDIFY MINING ASSET

# WELL ADVANCED PROJECT IN NEWFOUNDLAND GOLD RUSH



## Limited gold exploration in Newfoundland

- Total historical gold production: ~2.3 Moz
- Total 2016 drilling: < 70,000 metres
- Total 2021 drilling: ~400,000 metres

## Major gold discoveries

### Marathon Gold (MOZ.TSX) ~A\$480M market cap <sup>(1)</sup>

- Valentine Lake: 4.8Moz @ 1.7 g/t Au

### New Found Gold (NFG.TSXV) ~A\$1.3BN market cap <sup>(1)</sup>

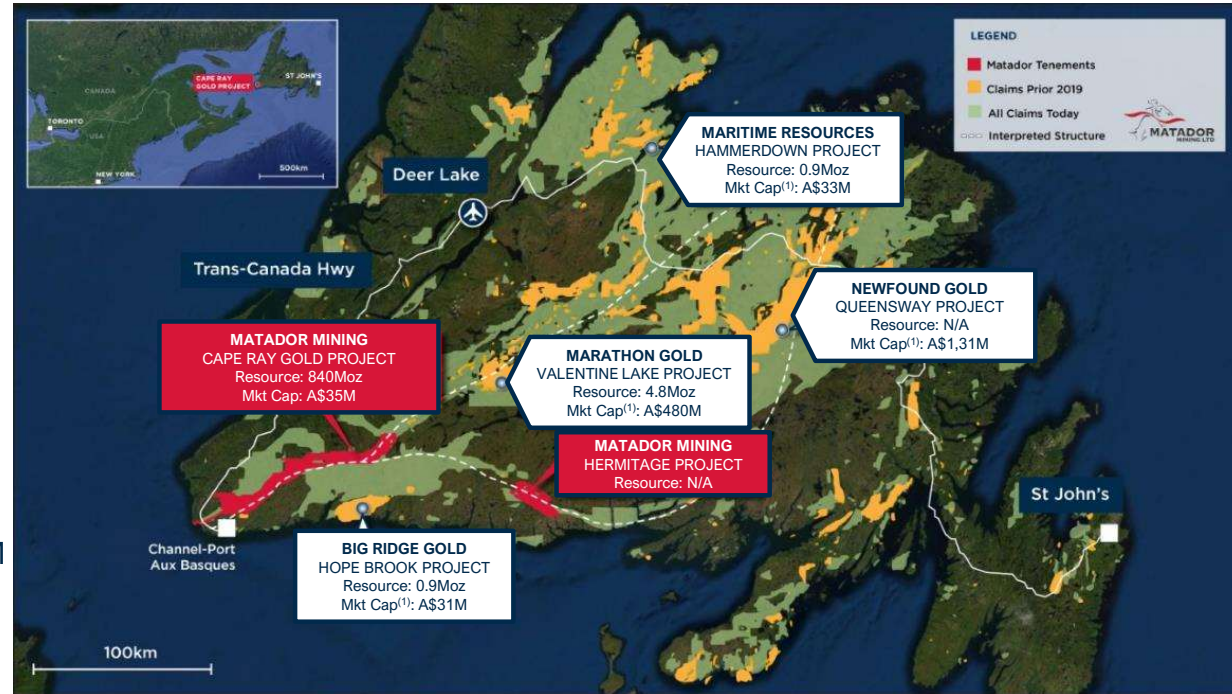
- Queensway: 19m @ 92.9 g/t Au & 25.6m @ 146.2 g/t Au

## Other Newfoundland Gold Explorers

- Multiple TSXV Newfoundland explorers A\$30M - A\$250M market capitalization

## Matador Mining – ASX

- Extensive tenement package on multi-million-oz structure
- Discounted to ASX & TSX exploration peers
- Only stock on the ASX with exposure to Newfoundland



1. Market Capitalisations as at 7 June 2022



# WORLD-CLASS APPROACH TO DISCOVERY



## SYSTEMATIC EXPLORATION APPROACH DESIGNED TO MAXIMISE RETURN ON CAPITAL

### Geophysics

- 40km completed in 2021
- 30m line-spaced Aero-Magnetic survey
- Results received in DecQ 2021

### Geochemistry

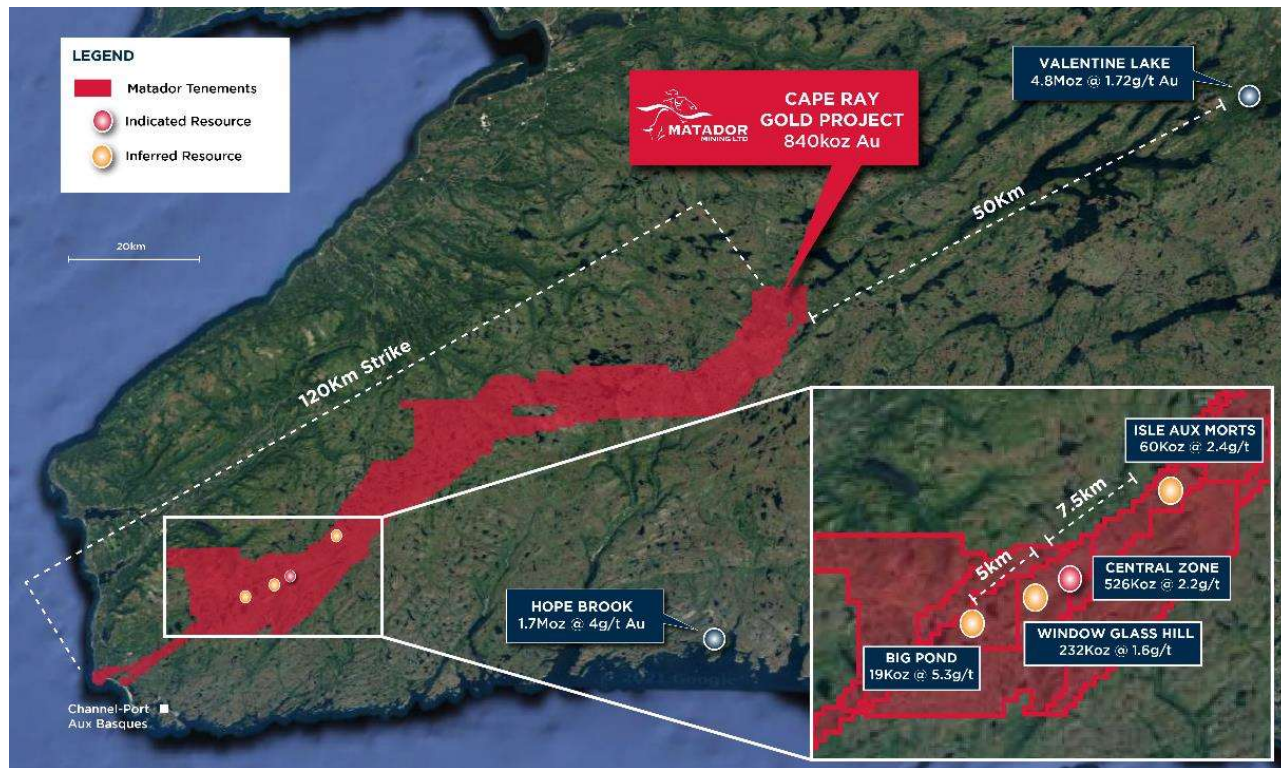
- **Historical rock chips – part of the story**
- ~90% of area covered by till (0.5m–5m)
- No historical basement rock testing

### Auger drill rigs and multi-element geochemistry

- Detect basement gold pathfinder elements
- “Halo” extends up to 100m from Au intercepts

### Diamond Drilling

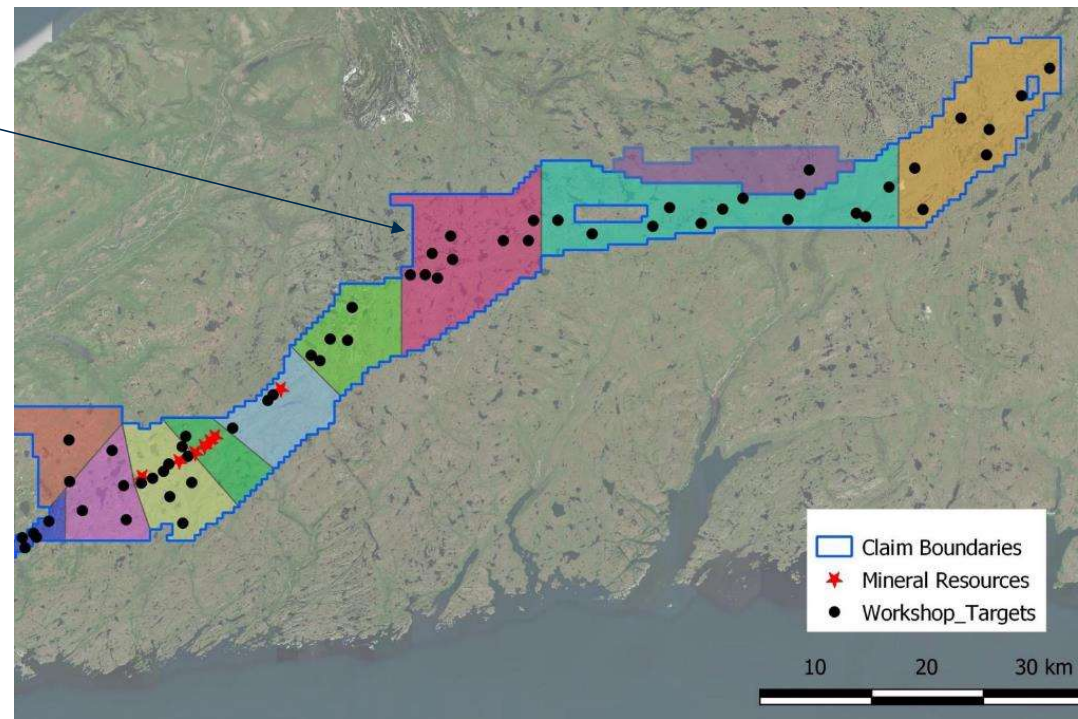
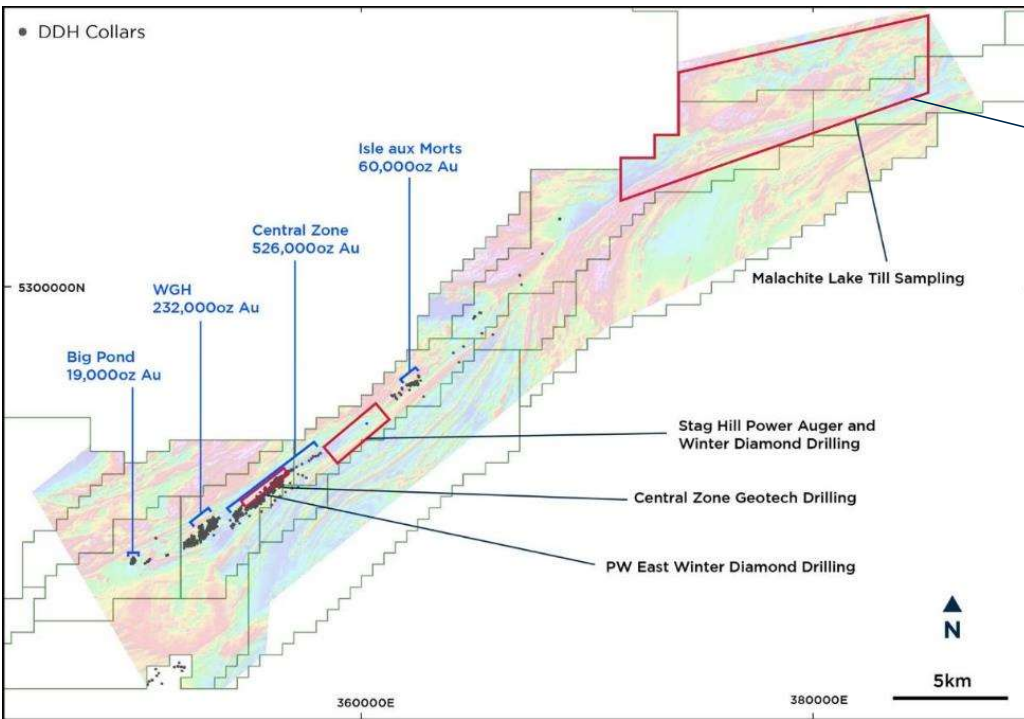
- Drilling economically on specific target areas



# GREENFIELD POTENTIAL LEADS STRATEGIC PIVOT



## TESTING NEW TARGETS ALONG 120-KM TENEMENT PACKAGE ON THE MULTI-MILLION-OUNCE GOLD BELT

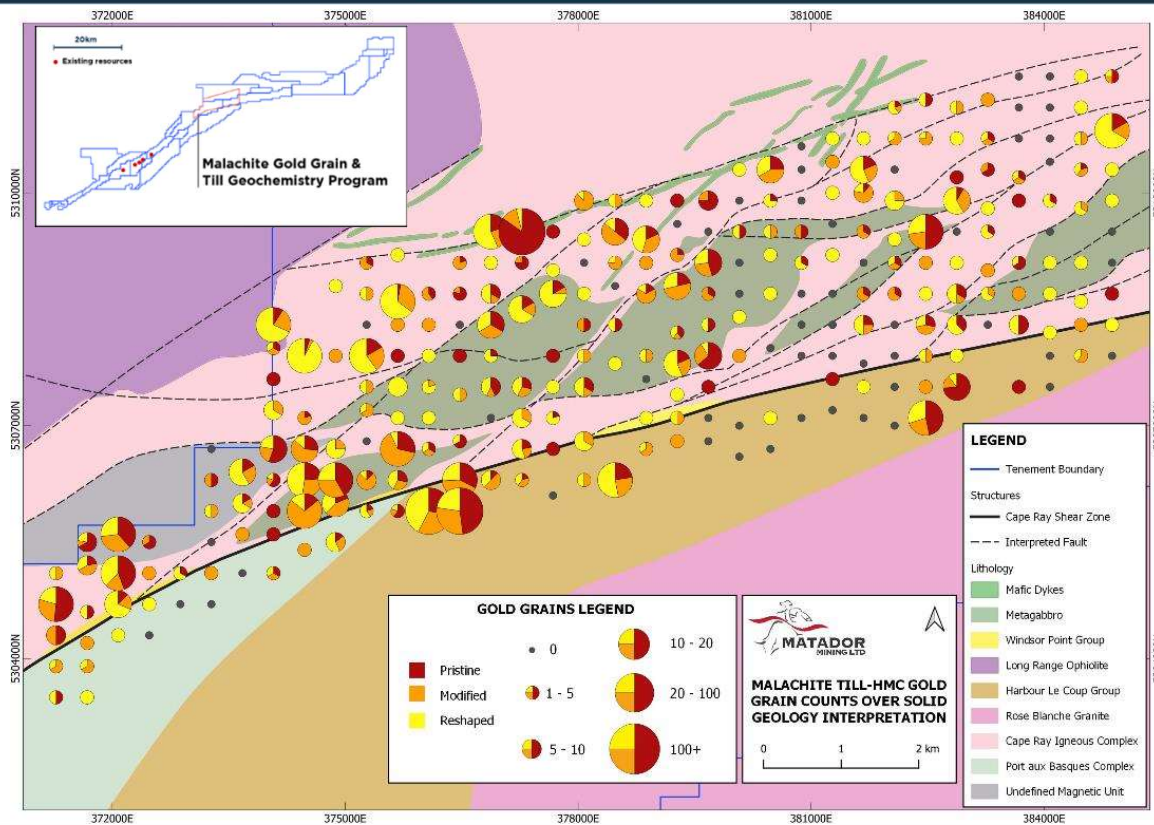




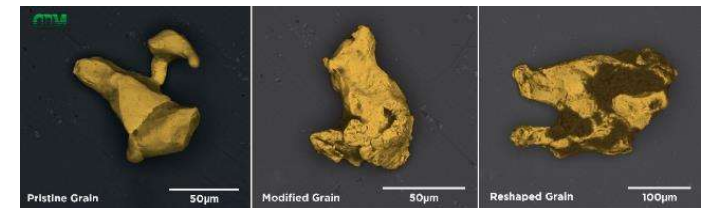
# MALACHITE TARGET AREA OPPORTUNITY



## SUBSTANTIAL GOLD ANOMALIES IN LARGE, GEOLOGICALLY COMPLEX TARGET AREA<sup>(1)</sup>



- Largest structural bend along multi-million-ounce corridor
- Geologically complex with second and third order structures off Cape Ray Shear
- Malachite fault complex is >14km in strike length and 4km wide
- Larger than Marathon Gold's Valentine Lake Mineral System footprint



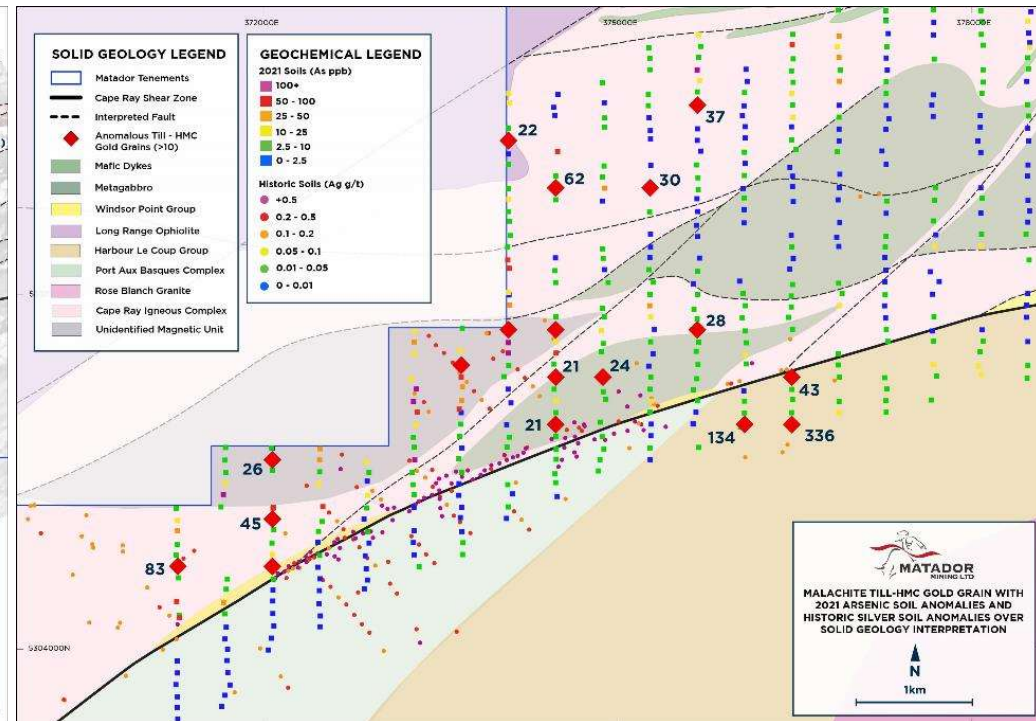
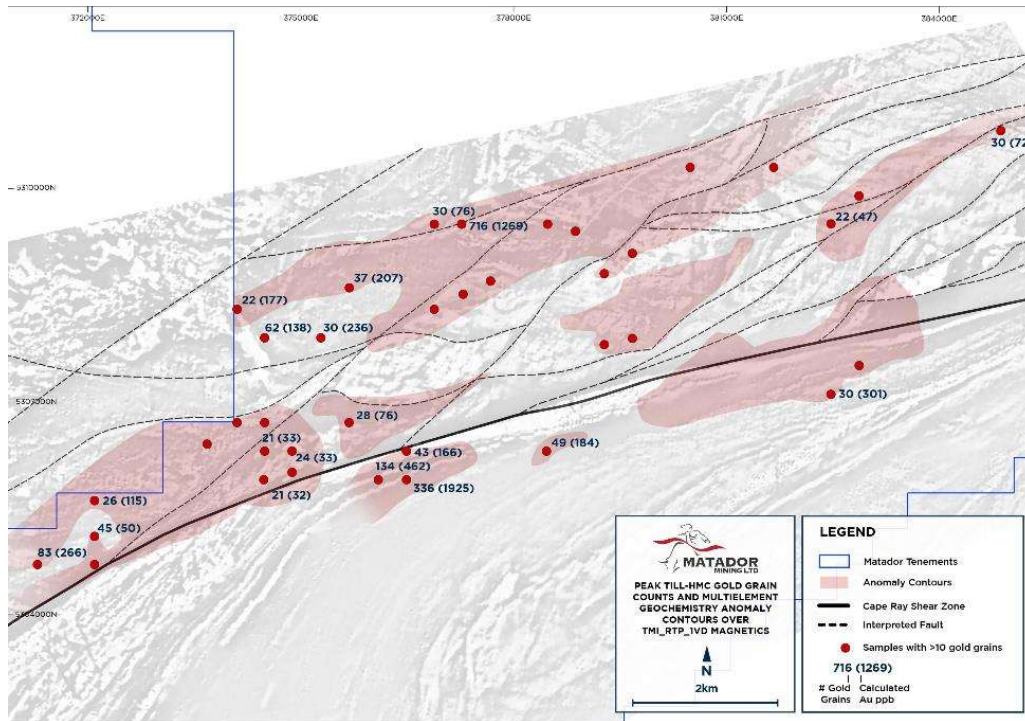
1. Figure modified from ASX release 8 June 2022



# MALACHITE POTENTIAL



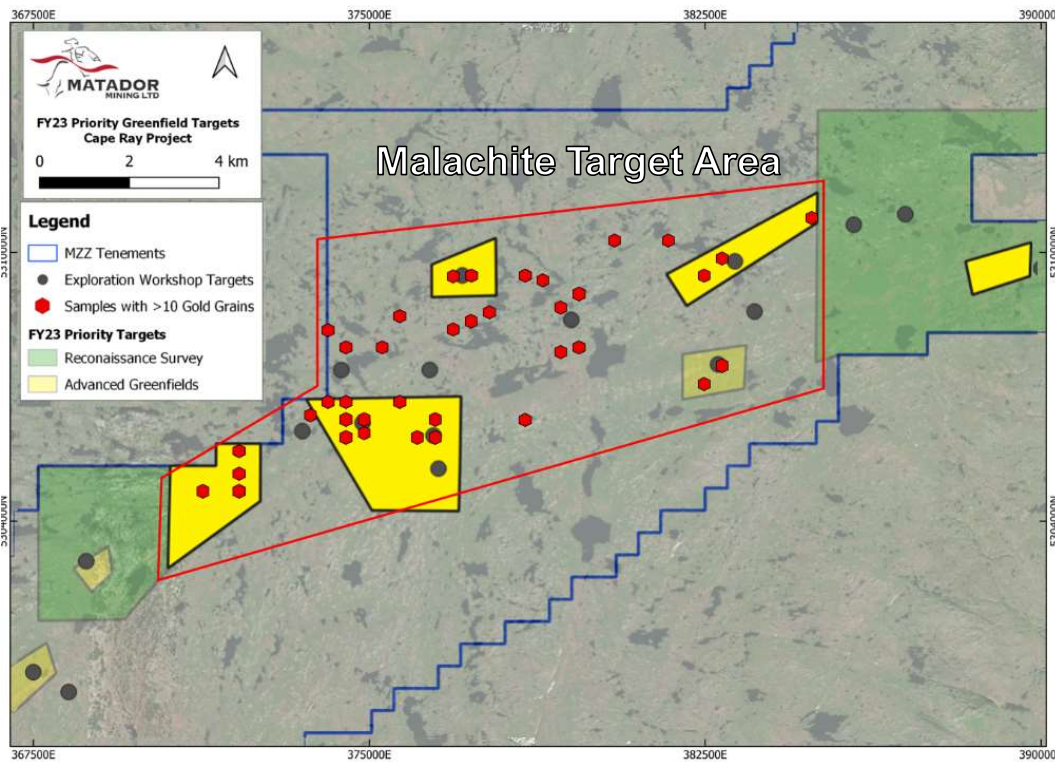
## 15 HIGH-TENOR GOLD GRAIN ANOMALIES IDENTIFIED OVER SURVEY AREA



# NEAR-TERM WORK PLAN ADVANCING TO NEW DRILLING



ADVANCING GREENFIELD TARGETS TO DRILL-READY STATUS; DRILLING EXPECTED MID-SUMMER 2022



EXTENSIVE FIELD WORK TO IDENTIFY SPECIFIC DRILL TARGETS

Extensive bottom of hole core and rock chip sampling at Malachite

Infill and extensional till sampling at Malachite, Bunker Hill and Grandy's target areas

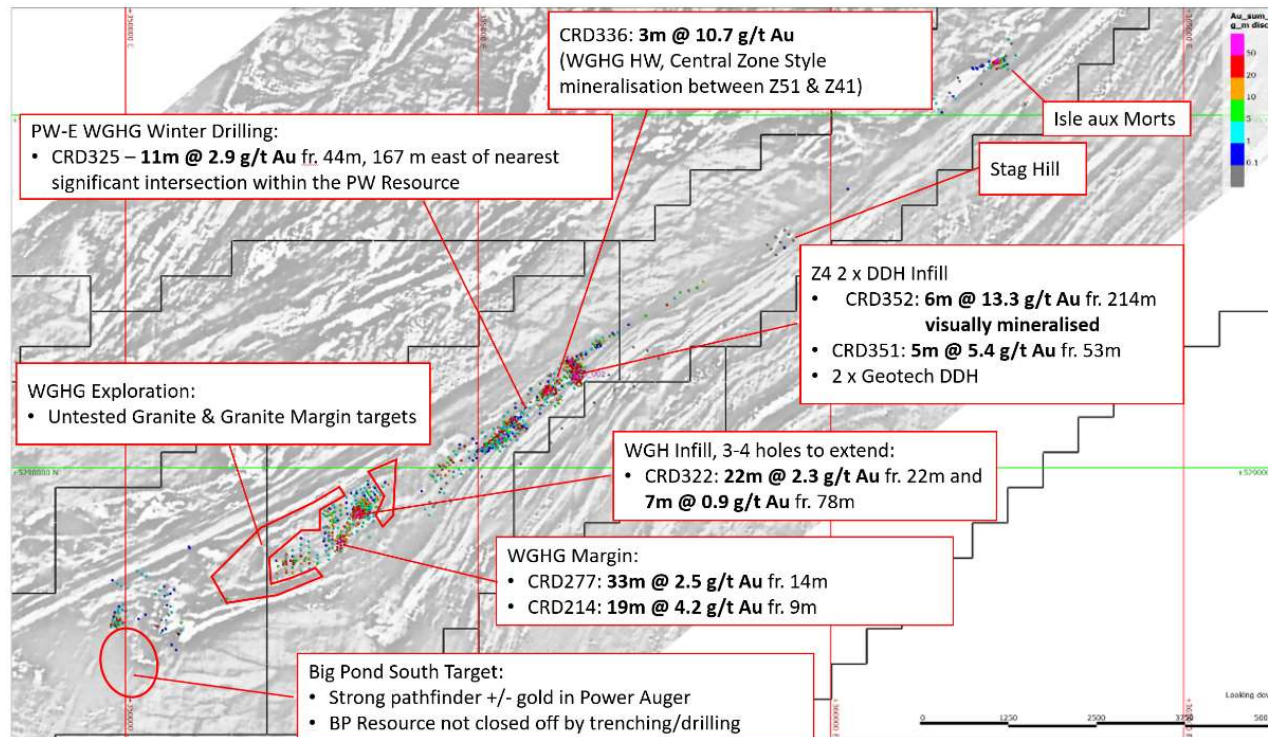
DIAMOND CORE DRILLING PROGRAM EXPECTED ON TOP MALACHITE DRILL TARGETS

# BROWNFIELDS DRILLING YIELDING SHALLOW HIGH-GRADE INTERCEPTS



**INDICATED MINERAL RESOURCES<sup>(1)</sup>**  
**3.1 Mt @ 3.15 g/t → 356 koz**

**INFERRED MINERAL RESOURCES<sup>(1)</sup>**  
**9.4 Mt @ 1.6 g/t → 481 koz**



## 2021 & 2022 Winter Auger Drilling WGHG, Big Pond, Benton, Stag Hill

- 3,385 holes completed
- 3,475 samples taken

## 2021 & 2022 Winter Diamond Drilling Big Pond, WGHG and Benton

- 135 holes completed
- 20,073 metres drilled

## Mineral Resource Update

- Planning to update mineral resource in early 2023
- Resource update to include all drilling to-date

1. ASX Announcement 6 May 2020



# HERMITAGE PROJECT



## LARGEST ARSENIC & ANTIMONY ANOMALY IN NEWFOUNDLAND ON PROLIFIC GOLD BELT

### Situated along the Hermitage Flexure

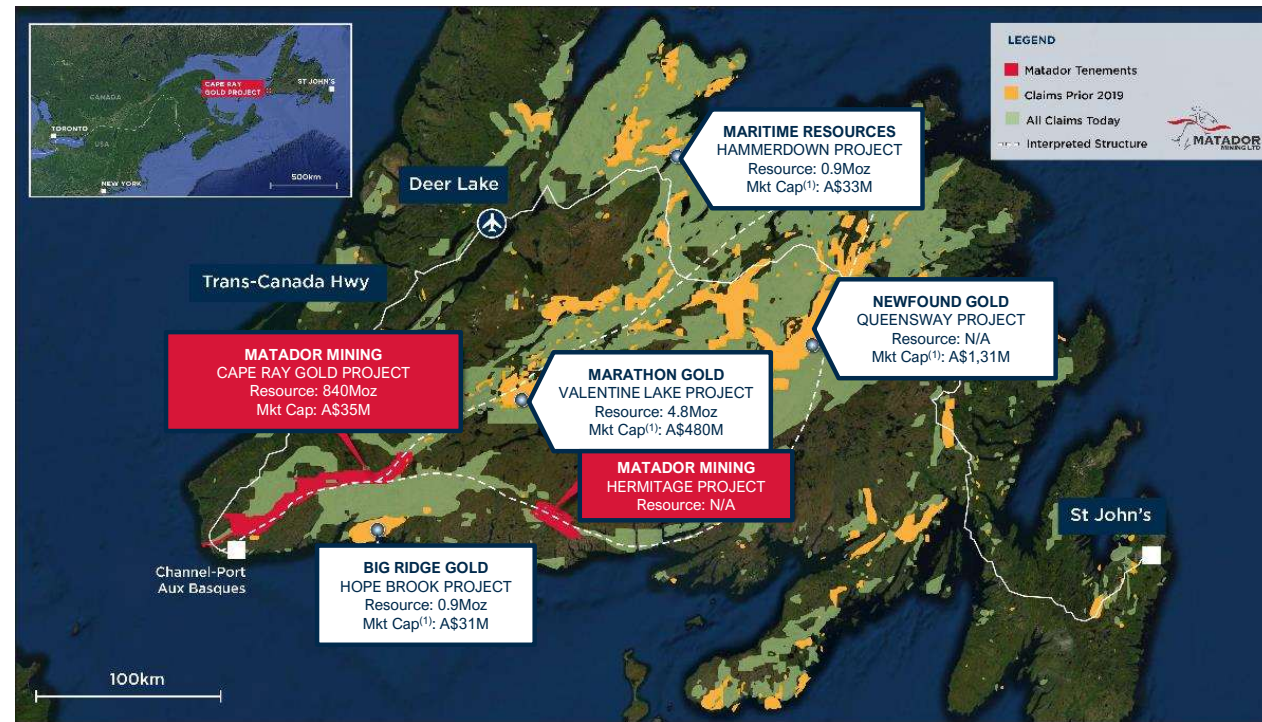
- Large crustal scale structure which is a splay off the main Cape Ray Shear Zone
- Similar structural setting to Queensway Project (TSXV: NFG) and Kingsway Project (TSXV: LAB)

### Significant tenement package

- 27-kilometres of continuous strike

### Historic, limited exploration activity by Mining Majors

- Teck, Falconbridge & Inco focused on base metals
- Historical work includes geochemistry, airborne magnetics and electromagnetics
- No historical drilling – No outcropping and thicker till cover (10m – 20m)



1. Market Capitalisations as at 7 June 2022

# BOARD & MANAGEMENT



## SEASONED MINING AND EXPLORATION EXPERIENCE WITH PROVEN TRACK RECORD OF SUCCESS



**Sam Pazuki** P. ENG, M. FIN  
MANAGING DIRECTOR & CHIEF EXECUTIVE OFFICER

Toronto based; Over 20 years mining industry experience in senior leadership positions in engineering, business development, strategy & investor relations. Past – Senior VP Strategy & Corporate Development at OceanaGold Corp (TSX: OGC), Ernst Young Advisory Services & Enbridge Inc.



**Warren Potma** BSC, MSC, MAIG, M. AUSIMM  
CHIEF GEOLOGIST

Over 25 years international experience specializing in structural and economic geology, geochemistry and metallurgy. Broad experience across exploration, feasibility and mining functions.



**Crispin Pike** BSC, MSC  
VP DISCOVERY

Over 17 years international experience in structural geology and geophysics applied to mineral exploration, and Newfoundland geology expert.



**Ian Murray** FCA, MAICD  
NON-EXECUTIVE CHAIRMAN

Over 25 years mining industry experience in senior leadership positions. Past - Executive Chairman and Managing Director of Gold Road Resources Ltd and DRDGold Ltd (NYSE & JSE: DRD).



**Justin Osborne** BSc(Hons) Geology, FAusIMM, FSEG, MAICD  
NON-EXECUTIVE DIRECTOR

Over 30 years experience as a mining & exploration geologist. Past – Executive Director at Gold Road Resources. Current - Non-Executive Director of Hamelin Gold & Anglo Australia Resources.



**Dr Nicole Adshead-Bell** Ph.D., Structural & Economic Geology  
NON-EXECUTIVE DIRECTOR

Over 24 years experience in technical, corporate, institutional investor and investment banking segments of the mining sector. Current – President of Cupel Advisory Corp and Non-Executive Director of Altius Minerals Corp and Non-Executive Chair of Hot Chilli.



**Kerry Sparkes** M.SC., P. GEO  
TECHNICAL ADVISOR TO THE BOARD

Over 30 years international experience in the mineral exploration business as both an exploration geologist and executive. Past - VP Geology for Franco-Nevada Corp.





ASX:MZZ  
[matadormining.com.au](http://matadormining.com.au)

ASX: MZZ  
OTCOX: MZZMF  
FSE: MA3



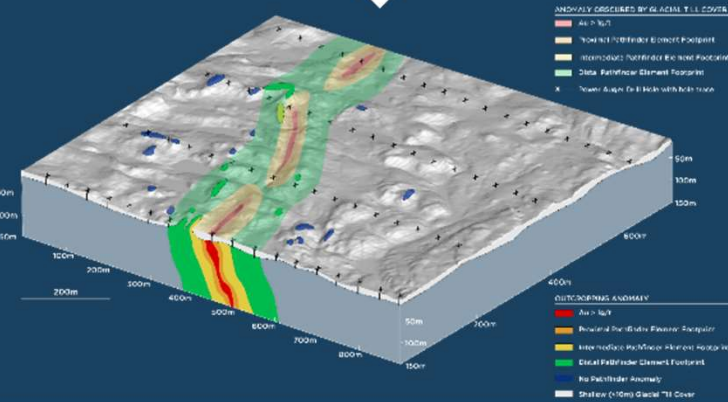
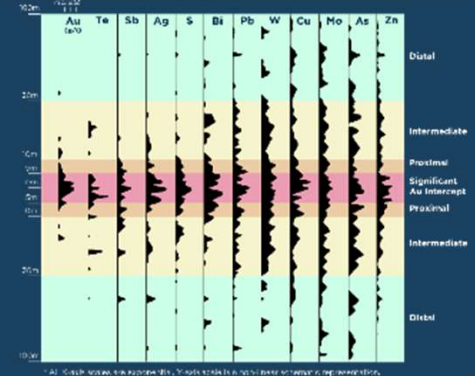
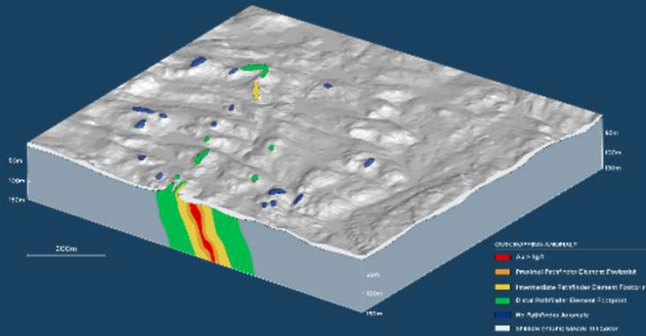
# MINERAL RESOURCE (1)



Applied Cut-off Grade (g/t)	Deposit	Indicated			Inferred			Total		
		Mt	Au (g/t)	Koz (Au)	Mt	Au (g/t)	Koz (Au)	Mt	Au (g/t)	Koz (Au)
Open Pit 0.25 <sup>2</sup> / 0.5 <sup>3</sup> g/t Au	Central	3.1	3.1	302	3.5	1.3	141	6.6	2.1	443
	Isle Aux Mort	-	-	-	0.8	2.4	60	0.8	2.4	60
	Big Pond	-	-	-	0.1	5.3	19	0.1	5.3	19
	WGH	-	-	-	4.7	1.6	232	4.7	1.6	232
	<b>Total</b>	<b>3.1</b>	<b>3.1</b>	<b>302</b>	<b>9.1</b>	<b>1.55</b>	<b>452</b>	<b>12.1</b>	<b>1.93</b>	<b>754</b>
Underground 2.0g/t Au	Central	0.5	3.8	54	0.3	2.8	29	0.8	3.3	83
	Isle Aux Mort	-	-	-	-	-	-	-	-	-
	Big Pond	-	-	-	-	-	-	-	-	-
	WGH	-	-	-	-	-	-	-	-	-
	<b>Total</b>	<b>0.45</b>	<b>3.75</b>	<b>54</b>	<b>0.32</b>	<b>2.77</b>	<b>29</b>	<b>0.77</b>	<b>3.34</b>	<b>83</b>
Total Combined 0.5 / 2.0 g/t Au	Central	3.5	3.2	356	3.8	1.4	170	7.4	2.2	526
	Isle Aux Mort	-	-	-	0.8	2.4	60	0.8	2.4	60
	Big Pond	-	-	-	0.1	5.3	19	0.1	5.3	19
	WGH	-	-	-	4.7	1.6	232	4.7	1.6	232
	<b>Total</b>	<b>3.5</b>	<b>3.15</b>	<b>356</b>	<b>9.4</b>	<b>1.60</b>	<b>481</b>	<b>12.9</b>	<b>2.02</b>	<b>837</b>

1. ASX Announcement 6 May 2020  
 2. Window Glass Hill and PW Zone  
 3. Central Zone deposits 04/41, 51, Isle aux Morts and Big Pond

# SYSTEMATIC APPROACH TO EXPLORATION



## Historical rock chips provide only part of the story

- 90% of the project is covered by till (0.5m–5m depth)
- No historical testing of the basement rock in these areas

## Auger drill rigs and multi-element geochemistry

- Sampling through shallow till cover to detect basement gold pathfinder elements
- “Halo” extends up to 100m from mineralised gold intercepts
- WGHG and Big Pond targets drilled – multiple Diamond Drill targets identified

# 2020 SCOPING STUDY RESULTS



## Highlights

High-grade, shallow open pit mineralisation drives strong production and robust economic returns<sup>(1)</sup>

- Average production (1 – 4yrs) – 88,000oz Au at 2.6g/t Au
- LOM Production – 484,000oz at 2.0g/t Au (7 yr. LOM)

## NPV 5% & IRR

- Pre-tax<sup>(1)</sup>– C\$300M & 61% IRR (C\$382M & 84% spot gold<sup>(2)</sup>)
- Post tax<sup>(1)</sup> – C\$196M & 51% IRR (C\$250M & 72% spot gold<sup>(2)</sup>)

## Low operating costs with scope for further reduction

- C1 – C\$1,013 /oz Au (US\$709 /oz Au)
- AISC – C\$1,108 /oz Au (US\$776/oz Au)

## Initial Capital Costs – C\$137M<sup>(3)</sup> (Exc. C\$9M Mine Development)

- Rapid Payback – 1.75yrs decreasing to 1.25yrs at US\$1,800 oz Au

## Future Targets

- Pre-Feasibility Study – potential to commence following 2021 exploration season
- EIS Approval – Work significantly advanced targeting completion 1H22 before submission (no red flags identified)

General	LOM total / Avg.
Mine Life (Yrs..)	7
Processing Facility Throughput (Mt)	1.2
Total Ore Mined (Mt)	7.8
Strip Ratio (Operational)	9.6
Production	LOM total / Avg.
Mill Head Grade (Au g/t)	2.0
Au Mill Recovery (%)	96%
Mill Head Grade (Ag g/t)	6.13
Ag Mill Recovery (%)	56%
Operating costs	LOM total / Avg.
Mining Costs OP (\$CAD / t mined)	2.80
Mining Costs UG (\$CAD / t mined)	90
Processing Costs (\$CAD / t processed)	21.35
G&A Costs (\$CAD / t processed)	4.94
Capital costs	LOM total / Avg.
Initial Capital (exc. Mine Development) (\$CAD m)	136.7
Mine Development (Initial) (\$CAD m)	8.7
Mine Development – OP (Sustaining) (\$CAD m)	28.2
Mine Development – UG (\$CAD m)	12.2
Other Sustaining Capital (\$CAD m)	6.9

1. ASX Announcement 6 May 2020

2. Study gold price assumption: US\$1,550/oz, Spot Gold Price: US\$1,800/oz

3. Estimate cost accuracy is as per the AACE Class 5 definition (+/- 35%)





**ASX: MZZ**  
**OTCQX: MZZMF**  
**FSE: MA3**

[www.matadormining.com.au](http://www.matadormining.com.au)

### **Contact**

Sam Pazuki  
Managing Director & CEO  
Ph: +61 8 6117 0478  
E: [info@matadormining.com.au](mailto:info@matadormining.com.au)

### **Matador Mining Ltd**

Level 20  
140 St Georges Terrace  
Perth WA 6000