



**Discovering gold in an emerging
province with land access to key areas
unlocked for the first time**

Investor Presentation
June 2022

Dan Power
Managing Director

ASX: KNB



Disclaimer

General information only

This presentation contains general background information and summary information about Koonenberry Gold Limited (ACN 619 137 576) ("**Koonenberry**") and its activities as at the date of this presentation. None of the members of Koonenberry or their or Koonenberry's respective advisors, affiliates, related bodies corporate, directors, officers, partners, consultants, employees and agents ("**Other Persons**") have authorised, permitted or caused the issue, submission, dispatch or provision of this presentation and none of them makes or purports to make any statement in this presentation. To the maximum extent permitted by law, Koonenberry and the Other Persons expressly exclude and disclaim all liability, including without limitation for fault or negligence on the part of any person, or for any expenses, losses, damages or costs incurred as a result of the use of this presentation or its contents and the information in this presentation being inaccurate or incomplete in any way for any reasons, whether by negligence or otherwise.

To the maximum extent permitted by law, each of Koonenberry and the Other Persons make no representation or warranty, express or implied, as to the currency, accuracy, reliability or completeness of all or any part of all or any part of this document, or any constituent or associated presentation, information or material, or the accuracy, likelihood of achievement or reasonableness of any forecasts, prospects of returns contained in or implied by, the information in this presentation or any part of it. Except as required by applicable law or regulation, neither Koonenberry nor the Other Persons have any obligation to provide any additional or updated information, whether as a result of new information, future events or results or otherwise.

Forward looking statements

These materials include forward looking statements. Often, but not always, forward looking statements can be identified by the use of forward looking words such as "may", "will", "expect" "intend", "plan", "estimate", "anticipate", "continue", "outlook" and "guidance" or other similar words and may include, without limitation, statements regarding plans, strategies and objectives of management, anticipated production or construction commencement dates and expected costs or production outputs.

Forward looking statements are based on Koonenberry and its Management's good faith assumptions relating to the financial, market, regulatory and other relevant environments that will exist and affect Koonenberry's business and operations in future. Koonenberry does not give any assurance that the assumptions on which forward looking statements are based will prove to be correct, or that Koonenberry's business or operations will not be affected in any material manner by these or other factors not foreseen or foreseeable by Koonenberry or Management or beyond Koonenberry's control. Although Koonenberry attempts and has attempted to identify factors that would cause actual actions, events or results to differ materially from those disclosed in forward looking statements, there may be other factors that could cause actual results, performance, achievements or events not to be as anticipated, estimated or intended, and many events are beyond the reasonable control of Koonenberry. Accordingly, readers are cautioned not to place undue reliance on forward looking statements. Forward looking statements in these materials speak only at the date of issue. Subject to any continuing obligations under applicable law in providing this information Koonenberry does not undertake any obligation to publicly update or revise any of the forward looking statements or to advise of any changes in events, conditions or circumstances on which any such statement is based.

Competent Persons Statement

The information in this presentation that relates to exploration results is based on information compiled under the supervision of Mr Brett Rava, who is a Member of the Australian Institute of Geoscientists (AIG) and the Exploration Manager of Koonenberry Gold Limited. Mr Rava has sufficient experience that is relevant to the style of mineralisation and type of deposit under consideration and to the activity which he is undertaking to qualify as a Competent Person as defined in the 2012 Edition of the "Australasian Code for Reporting Exploration Results, Mineral Resources and Ore Reserves." Mr Rava consents to the inclusion in this report of the matter based on his information in the form and context in which it appears.

This announcement has been approved for release by the Board of Koonenberry Gold Ltd.

Corporate Overview





Tight capital structure with Top 20 holding 74.4% of the register

Corporate Summary (15/06/2022)	KNB
Shares on Issue	119.7M
Market Cap (@0.092 / share)	11.0M
Cash (31 Mar 2022)	5.63M
Options on issue (ex \$0.23) ¹	12.73M
Performance Rights on issue ²	2.40M
IPO Investor shares	107.8M/90.03%
Board and Management shares	11.93M/9.97%

1. Refer to Prospectus dated 02/07/2021

2. Refer to Prospectus dated 02/07/2021 and KNB ASX announcement dated 13/04/2022



Board and Management	Experienced Team – Focused on Discovery
 Anthony McIntosh (BComm, GAICD) Chairman & Non-Executive Director	<ul style="list-style-type: none"> •Extensive experience in investment marketing, investor relations and strategic planning •Non-Executive Director of ASX-listed: Strategic Energy Resources, Copper Strike and K-Tig as well as several unlisted and not-for profit organisations
 Dan Power (BSc Hons, MSc Econ. Geol, FAICD, AIG, SEG) Managing Director	<ul style="list-style-type: none"> •Geologist with +25 years' experience in exploration, project generation, evaluation, strategy and management in Australia, China, SE Asia, SW Pacific and Mongolia •Formerly Executive Director for Titeline Mongolia and Country Manager for Newmont
 George Rogers (BIB) Non-Executive Director	<ul style="list-style-type: none"> •Extensive experience in capital and commodity markets, investor relations and strategic planning as well as corporate strategy, M&A and capital markets •Former Managing Director of KNB. Co-founder and Director of SRG Partners
 Ben Donovan (BComm (Hons), ACG (CS)) Company Secretary & Non-Executive Director	<ul style="list-style-type: none"> •Extensive experience in listing compliance, corporate governance, capital markets and advisory across resources, agritech, biotech, media and technology sectors •Member of the Governance Institute of Australia and company secretary for several listed and unlisted companies
 Brett Rava (BAppSc Geol, AIG, SEG) Exploration Manager	<ul style="list-style-type: none"> •Geologist with +30 years' experience in minerals exploration and management from project generation to greenfields and in mine exploration and strategic planning •Formerly Heathgate Resources, Stellar Resources, Newmont and Aberfoyle Resources

44.99M

Shares subject to escrow
between 12-24 months

\$5.63M

(Cash as at 31 March 2022)

Koonenberry Project

Where are we and why are we here?

Focussed Strategy

- High grade gold systems in prospective fold and thrust belt
- Favourable mining jurisdiction, 160km NE of Broken Hill
- **Early mover advantage. Large strategic land package (1,339km² granted)**
- 100% owned

Project

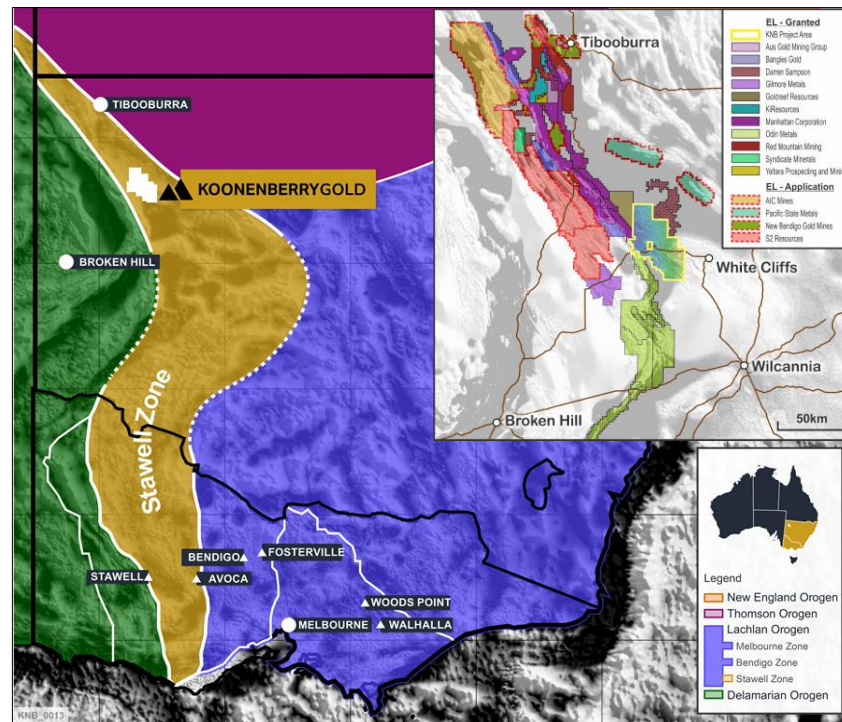
- **Prospective geological setting. Extension of Western Victorian Goldfields**
 - Similar tectonic setting, source rocks, structure, host rocks, timing of deformation, metamorphism, mineralisation, magmatism¹
- Historically underexplored frontier
 - FY21 Exploration expenditure: Vic 149.3M¹; Koonenberry Belt <5M (est.).
 - FY21 Exploration drill metres: Vic 100's km (est.); Koonenberry Belt <10km (est.).
- Currently seeing a revival in exploration with some successes
 - eg. MHC, ODN, RMX, S2R (2,713km²), A1M (4,283km²)
 - ³MHC. 63m @1.3g/t Au; 8m @40.5g/t Au
- Control +60km of Koonenberry Fault, numerous splay faults
- Pipeline of quality Prospects and Exploration Targets

Company

- **Fresh board and management team to take Project forward**
- Fully funded with 5.6M in cash (March 2022)

Drivers

- Strong community support with land access unlocked for the first time to key areas hosting some of the best soil anomalies and structural targets
- **Accelerating discovery timeline with drilling to commence in July**



Simplified schematic geology of SE Australia showing major crustal boundaries. Modified after Miller J, et al., 2005 and Musgrave, B., 2010. NSW_Vic Gravity image (200km high pass filter applied, greyscale).

Notes: 1. Direen, N.G., 2021; 2. Earth Resources Regulation Annual Statistical Report, FY2020-21, p4 – Gold only; 3. Manhattan Corporation (ASX) 23/03/2022, 06/12/2021.

Koonenberry Project

Pipeline of Discovery Opportunities

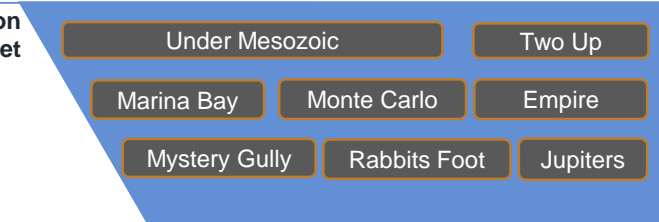
Project

- Highly prospective
- First order Koonenberry Fault
 - Deep, mantle tapping fluid conduit
- Second order splays and thrust faults
 - Important structural trap sites
- Mafic rocks are likely source rocks for gold and thrust up from depth
- **Gold observed in quartz veins and extensive nugget field (+200km²)**
- **Gold in soil anomalies defined over a combined 34km (+5ppb Au)**

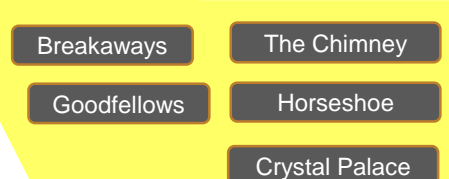
Advanced Prospects

- 20+ Targets defined
- 7 Drill Ready Prospects
 - Longhorn
 - Belagio
 - Vegas
 - Four Queens
 - Atlantis
 - Lasseters
 - Lucky Sevens

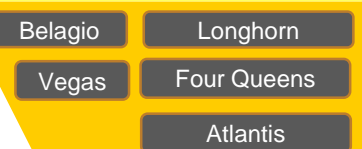
Exploration Target



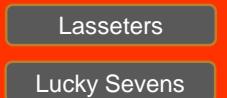
Anomalous Prospect



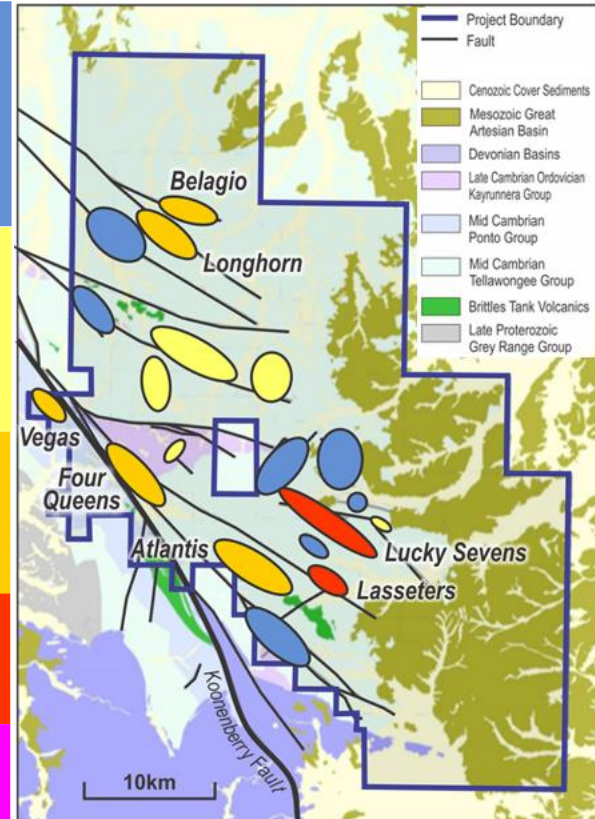
Drill Ready Prospect



Mineralised Prospect



Mineral Resource



Lucky Sevens Prospect

Classic fault/fold controlled orogenic gold system

GEOCHEMISTRY

- Gold in soil anomaly 4.0km long and up to 450m wide (+5ppb, max 1,400ppb Au)¹
- Sigmoidal shape at prospect scale reflected in vein development at outcrop scale
- As pathfinder element association
- Proximal to Koonenberry nugget field (nugget morphology suggests proximal source)

GEOLOGY

- Turbidite sedimentary sequence
- **Structural field mapping highlights complexity and dilatant zones:**
 - Conjugate reverse faults and linking structures
 - Doubly plunging antiformal hinge zones
 - Chevron folding
 - En echelon and sigmoidal veins
 - Dilatant zones interpreted to correspond with widest gold in soil anomaly

ALTERATION

- Inner sulphide halo and outer carbonate halo observed in outcrop and drill core

GEOPHYSICS

- **Resistivity anomalies interpreted to represent multiple stacked quartz reefs to +200m below surface**

POSSIBLE GEOLOGICAL ANALOGUE

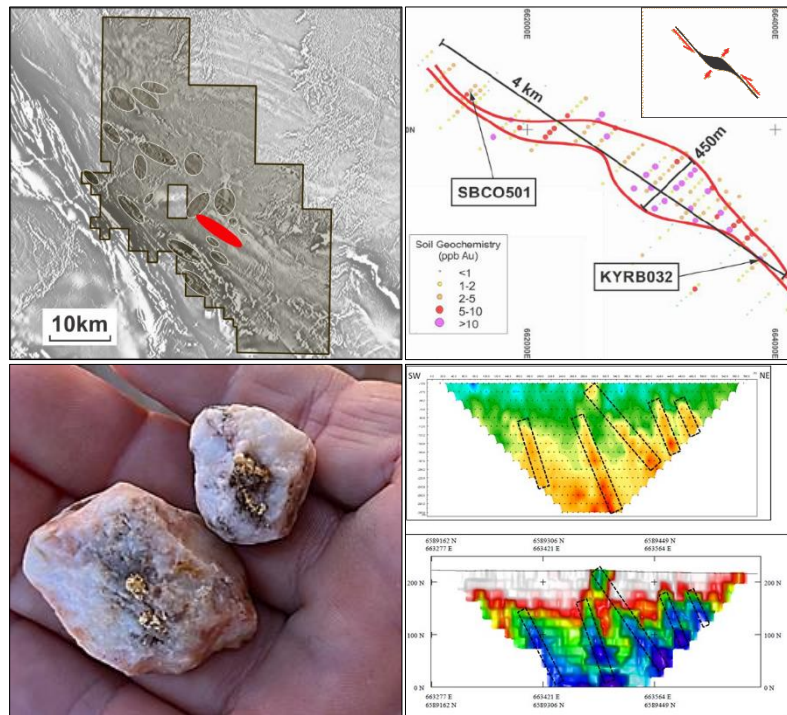
- Bendigo Zone deposits (eg. Fosterville-type)
 - Turbidite sequence
 - Structural architecture (chevron folds separated by high strain zones)
 - Timing of deformation, quartz veining and mineralisation

HISTORICAL INTERCEPTS

- High grade gold intercepts occur at "tails" of sigmoidal soil anomaly
 - 5.0m @25.1g/t Au from 0m (KYRB032)²
 - 0.25m @20.67g/t Au (costean SBCOS01)²

DRILL READY

- **"Fat" part of soil anomaly has not been drill tested**
- Priority Target for July drilling program



Atlantis Prospect

Geologically similar to +5Moz Stawell Gold Mine

GEOCHEMISTRY

- Gold in soil anomaly 6.5km long and up to 900m wide (+5ppb, max 49.4ppb Au)¹
- **Strongest, most coherent gold in soil anomaly within the KNB Project Area**
- Copper, Arsenic association (up to 15.3% Cu, 1,200ppm As in rock chip)²

GEOLOGY

- Proximal to Koonenberry mantle-tapping fault
- Wedged between two second order splay faults
- **Sediments and mafic dome (doubly-plunging antiform) interpreted**
- Mafic units are interpreted to have been thrust up from depth. An important pre-cursor structural feature for gold mineralisation at Stawell
- Structurally segmented along western limb

ALTERATION

- Strong patchy silicification and weak pervasive hematite alteration
- Chlorite alteration observed in Aster imagery (common alteration feature at Stawell)

GEOPHYSICS

- Mafic units can be mapped with magnetic data
- **Magnetite destruction may indicate hydrothermal fluid pathway and alteration**

POSSIBLE GEOLOGICAL ANALOGUE

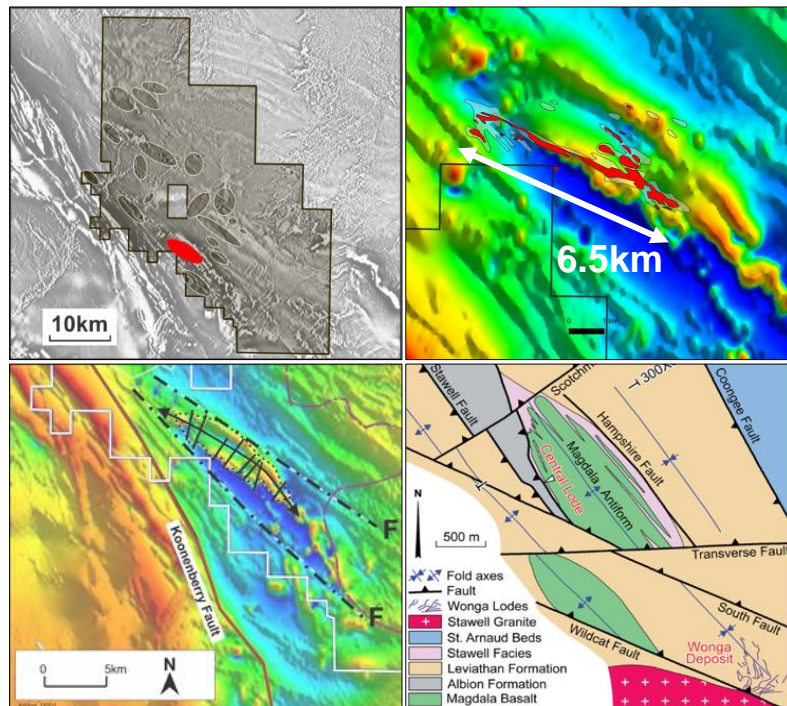
- +5Moz Stawell Gold Mine (Magdala deposit):
 - Proximal to mantle-tapping fault (Moyston Fault)
 - Basalt dome (doubly plunging antiform)
 - Structural complexity, particularly along western limb

HISTORICAL INTERCEPTS

- Has never been drilled

DRILL READY

- **Exciting target with robust soil anomaly and favourable structural setting**
- Priority Target for upcoming program



Four Queens Prospect

High grade gold target

GEOCHEMISTRY

- Gold in soil anomaly 4.6km long and up to 750m wide (+5ppb, max 55.9 ppb Au)¹
- **Historical results of 13.95g/t Au in Lag²**
- Au-As anomaly on Sth edge of graben

GEOLOGY

- Largely unknown due to lack of outcrop
- Located on Sth margin of Nuntherungie half-graben
- **Pull-apart basin structural setting**
 - Kayrunnera Group sediments, carbonates and mafic magmas (potential heat source)

ALTERATION

- Evidence for large scale dewatering and movement of hydrothermal fluids

POSSIBLE GEOLOGICAL ANALOGUE

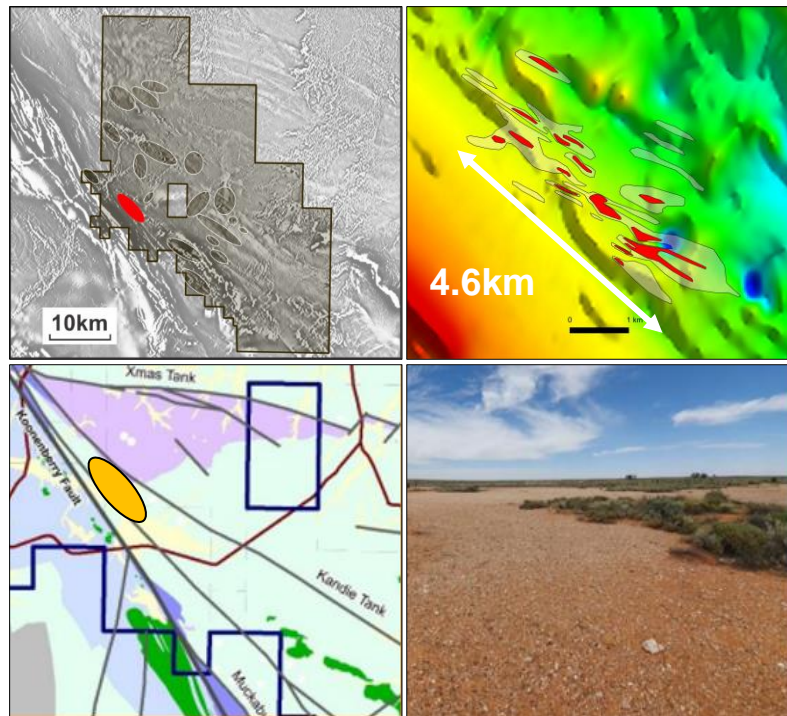
- +10M oz Au Fruta del Norte epithermal deposit (Ecuador)
 - Pull-apart basin structural setting
 - Sediments, conglomerates, andesitic magmas

HISTORICAL INTERCEPTS

- Has never been drilled

DRILL READY

- **Extensive soil anomaly with high grade gold and sparse outcrop**
- Priority Target for upcoming program



Vegas Prospect

Shear-zone hosted gold system

GEOCHEMISTRY

- **Gold in soil anomaly 2.0km long and up to 450m wide** (+5ppb, max 20.1 ppb Au)¹

GEOLOGY

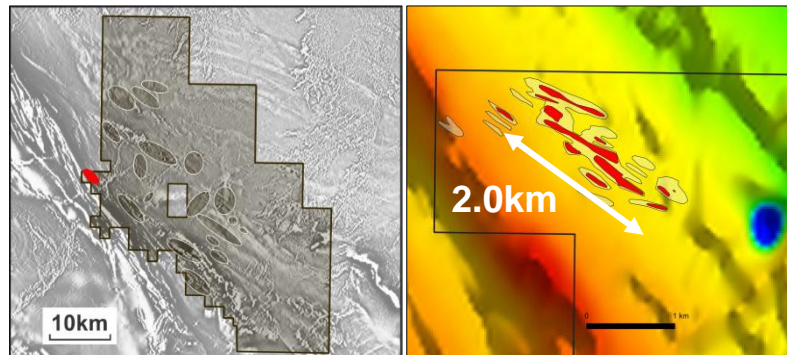
- Located near Koonenberry fault
- Intersection of multiple splay faults
- **Extensive quartz scree**
- Structural mapping studies indicate:
 - NW-SE trending stacked reefs with interconnecting veins
 - Veins are heavily iron-oxide stained in places
 - Veins emplaced in hinges of folds and along limbs during flexural slip
 - Some sigmoidal veins emplaced during shearing

HISTORICAL INTERCEPTS

- Has never been drilled

DRILL READY

- **Multiple stacked reefs interpreted and reflected in soil geochemistry**
- Priority Target for upcoming program



New Opportunities

Exploration under younger cover rocks

GOLD OCCURRENCES

- ~440Ma gold in quartz veins hosted by marine sediments
- Mesozoic palaeoplacer gold in basal pebble conglomerate (Namur Formation)
 - Interpretation: Gold bearing veins were exposed in the Mesozoic, eroded and emplaced into the basin. These palaeoplacer deposits have been preserved
- Cenozoic alluvial gold occurrences (Koonenberry nugget field)
 - Interpretation: Gold bearing quartz veins and the Mesozoic palaeoplacer deposits have been eroded and emplaced into creeks and plains. The gold nugget morphology suggests a proximal source

GEOLOGY

- Mesozoic cover onlaps onto basement rocks and dips shallowly to east
- The cover rocks only thinly overly basement rocks within Project area (<10's m)

GEOPHYSICS

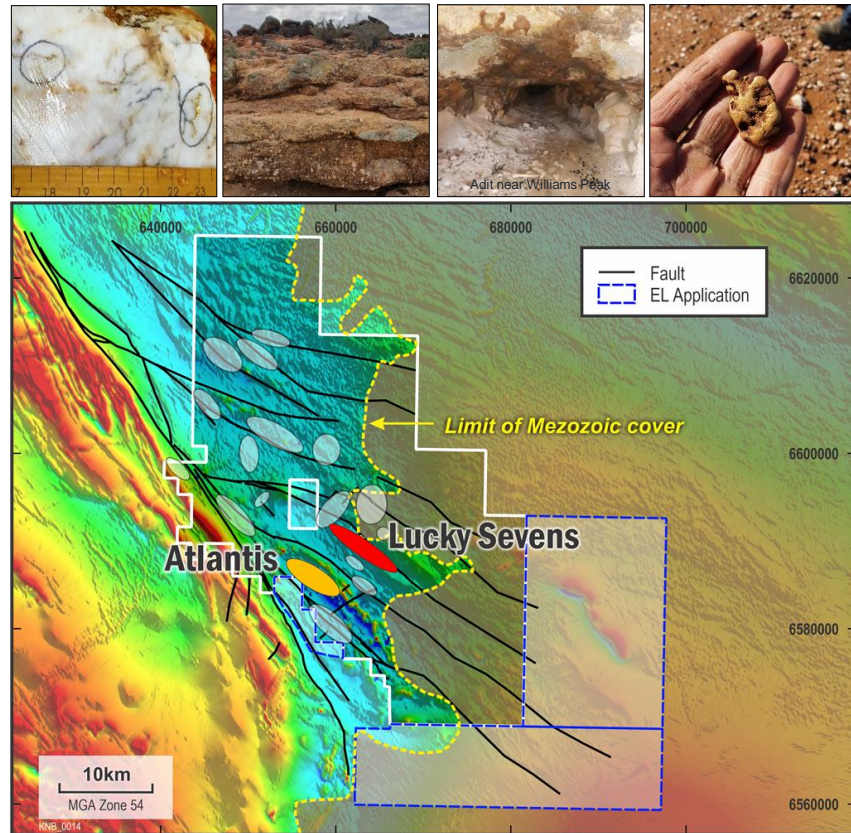
- **Mineralised structures in outcrop can be mapped along strike in magnetic data**
- These structures are interpreted to continue under cover to the SE
- Mafic volcanic rocks represented by magnetic highs are also interpreted under shallow cover

POSSIBLE GEOLOGICAL ANALOGUE

- Exploration under Murray Basin cover sediments north of Stawell and Bendigo (eg. ¹CYL: 12.9m @33.1g/t Au from 66.4m inc. 0.5m @831g/t Au)
- Murray basin thickness: 0-150m+?; Koonenberry Mesozoic thickness: 0-10's m?

OPPORTUNITY

- Trial geophysics under Mesozoic cover rocks within existing Project area
- 727 kms² additional EL Applications
- **+120km of prospective structures under Mesozoic cover**



Koonenberry Gold

Exciting Greenfields Discovery Opportunity

- True belt scale opportunity
 - Strategic tenement position controlling 2,065km² (inc. 726km² under application)
- **Abundant evidence for gold mineralisation**
 - Extensive nugget field and outcropping quartz veins (+200km²)
 - +34km gold in soil anomalism (+5ppb)
- Pipeline of drill-ready targets
 - Lucky Sevens, Lasseters, Atlantis, Four Queens, Vegas
- Strong community support
 - Land access unlocked to key areas for the first time
- **Accelerating discovery through drilling**
- **Drill program to commence in July**
- **10,000m Aircore Drilling (AC)**
 - Test soil anomalies and prospective structures eg. Atlantis, Four Queens, Vegas
- **5,000m Reverse Circulation Drilling (RC)**
 - Test priority Prospects and drill ready target eg. Lucky Sevens
- **1,500m Diamond Drilling (DD)**
 - Follow up priority RC results and obtain important structural data
- Fully funded 5.6M cash position
- **Consistent news flow for shareholders over the next +6 months**





For further information, contact:

Dan Power

Managing Director

E: dan.power@koonenberrygold.com.au

W: koonenberrygold.com.au

<https://www.linkedin.com/company/koonenberry-gold>

References

- Cayley, R. A., et al., 2011. Crustal architecture of central Victoria: results from the 2006 deep crustal reflection seismic survey.
- Cayley, R., 2015. The giant Lachlan orocline – a powerful new predictive tool for mineral exploration under cover across eastern Australia.
- Cross, A. J., et al., 2018. Insights into the evolution of the Thomson Orogen from geochronology, geochemistry and zircon isotopic studies of mafic rocks.
- Direen, N. G., 2021. Koonenberry seismic reinterpretation of reprocessed data. Internal report for Koonenberry Gold Ltd.
- Doublier, M.P., et al., 2017. 3D model of the major crustal boundaries of Australia: implications for mineral systems understanding.
- Doublier, M.P., et al., 2018. Structural elements of the southern Thompson Orogen (Australian Tasmanides): a tale of megafolds.
- Fraser, G. L., et al., 2015. New SHRIMP U-Pb zircon ages from the southern Thomson Orogen, northern Lachlan Orogen and Koonenberry Belt.
- Fuller T. and Hann, I., 2019. Updated NI 43-101 Technical Report. Fosterville gold mine in the state of Victoria, Australia. Prepared for Kirkland Lake Gold Ltd.
- Glen, R.A., 2005. The Tasmanides of eastern Australia: in Vaughan et al. (eds), 2005, Terrane Processes at the margins of Gondwana, Geological Society, London, Special Publications, 246,23-96.
- Greenfield J. and Reid, W., 2006. Orogenic gold in the Tibooburra area of northwestern NSW a ~440 Ma ore system with comparison to the Victorian Goldfields.
- KNB (ASX) 29/09/2021. Koonenberry Gold, Annual Financial Report for the year ended 30 June 2021.
- KNB (ASX) 29/04/2022. Koonenberry Gold, Quarterly Activities Report for the period ended 31 March 2022.
- KNB (ASX) 31/01/2022. Koonenberry Gold, Quarterly Activities Report for the period ended 31 December 2021.
- Miller, J. and Wilson, J.L., 2004. Stress controls on intrusion-related gold lodes: Wonga gold mine, Stawell, Western Lachlan Fold Belt, Southeastern Australia.
- Miller, J., et al., 2005. Evolution of a reworked orogenic zone: The boundary between the Delamarian and Lachlan fold belts, southeastern Australia.
- Musgrave, B., 2010. A new tectonic interpretation of Far Western NSW – Implications for exploration.
- Peters, J., 2021. Koonenberry Gold Pty Ltd Independent Geologist's Report – Koonenberry Gold Project, contained in Koonenberry Gold Ltd Prospectus, 24/09/2021.
- Phillips, D., et al., 2012. Timing of gold mineralization in the western Lachlan Orogen, SE Australia: A critical overview.
- Sampinato, G. et. al., 2015. Crustal architecture of the Thomson Orogen in Queensland inferred from potential field forward modelling.
- Willman, et al., 2010. Crustal-Scale Fluid Pathways and Source Rocks in the Victorian Gold Province, Australia: Insights from Deep Seismic Reflection Profiles (Society of Economic Geologists, Inc. Economic Geology, v. 105, pp. 895–915).