



EXPLORING WORLD CLASS DISTRICTS
GOLD – COPPER

INVESTOR PRESENTATION -June 2022

DISCLAIMER

DISCLAIMER AND FORWARD LOOKING STATEMENTS

This presentation has been authorised for release by the Board of Diablo Resources Limited. It is not a prospectus nor an offer of securities for subscription or sale in any jurisdiction nor a securities recommendation. The information in this presentation is an overview and does not contain all information necessary for investment decisions. In making investment decisions, investors should rely on their own examination of Diablo Resources Limited (Company) and consult with their own legal, tax, business and/or financial advisers in connection with any acquisition of securities or interest in the Lone Pine Gold Project and the Devil's Canyon and Western Desert Gold-Copper Projects. The information contained in this presentation has been prepared in good faith by the Company. However, no representation or warranty, express or implied, is made as to the completeness or adequacy of any statements, estimates, opinions or other information contained in this presentation. To the maximum extent permitted by law, the Company, its directors, officers, employees and agents disclaim liability for any loss or damage which may be suffered by any person through the use of, or reliance on, anything contained in or omitted from this presentation. Certain information in this presentation refers to the intentions of the Company, but these are not intended to be forecasts, forward looking statements, or statements about future matters for the purposes of the Corporations Act 2001 (Cth) or any other applicable law. The occurrence of events in the future are subject to risks, uncertainties and other factors that may the Company's actual results, performance or achievements to differ from those referred to in this presentation to occur as contemplated. The presentation contains only a synopsis of more detailed information available in relation to the matters described in this document and accordingly no reliance may be placed for any purpose whatsoever on the sufficiency or completeness of such information and to do so could potentially expose you to a significant risk of losing any of the property invested by you or incurring by you of additional liability. Recipients of this presentation should conduct their own investigation, evaluation and analysis of the business, data and property described in this presentation. In particular, any estimates or projections or opinions contained herein necessarily involve significant elements of subjective judgment, analysis and assumptions and you should satisfy yourself in relation to such matters.

COMPETENT PERSON STATEMENT

The information in this report regarding exploration results, exploration targets and the mineral resources is based on and fairly represents information compiled by Mr Lyle Thorne, a Competent Person who is a Member of the Australasian Institute of Mining and Metallurgy. Mr Thorne is an employee and shareholder of the Company and has sufficient experience that is relevant to the style of mineralisation and type of deposit under consideration and to the activity being undertaken to qualify as a Competent Person as defined in the 2012 Edition of the 'Australasian Code for Reporting of Exploration Results, Mineral Resources and Ore Reserves'. The Company confirms that the form and context in which the Competent Person's findings are presented have not been materially modified from the original market announcements.

COMPANY BACKGROUND

COMMITTED TO EXPLORATION SUCCESS



- Listed October 2021 after raising \$6.5M
- At current share price, no EV assigned to high impact projects to be drilled in 2022
- Tight Capital Structure
- Diablo Directors have strong track record of identifying key projects (eg: Big Sandy Li Project in Arizona) and creating value for shareholders.
- Technical Management & In-country Team have over 100 years combined exploration experience, with significant North American exposure.

\$4.4m

Market Cap at A\$.06

74.5m

Shares on Issue

ASX:DBO



Paul Lloyd

Non-Executive Chairman

Chartered Accountant with over 30 years' commercial experience. Currently MD of AZL, with directorships in BPM and LRD



Greg Smith

Non-Executive Director

Experienced Geologist who has worked over a wide cross section of minerals and countries including in North America, Australia, Asia and throughout Africa. NED of BPM



Barnaby Egerton-Warburton

Non-Executive Director

Over 20 years of investment banking and corporate finance experience. Non-Executive Chairman of PFE and MD of LRD



Lyle Thorne

Chief Executive Officer

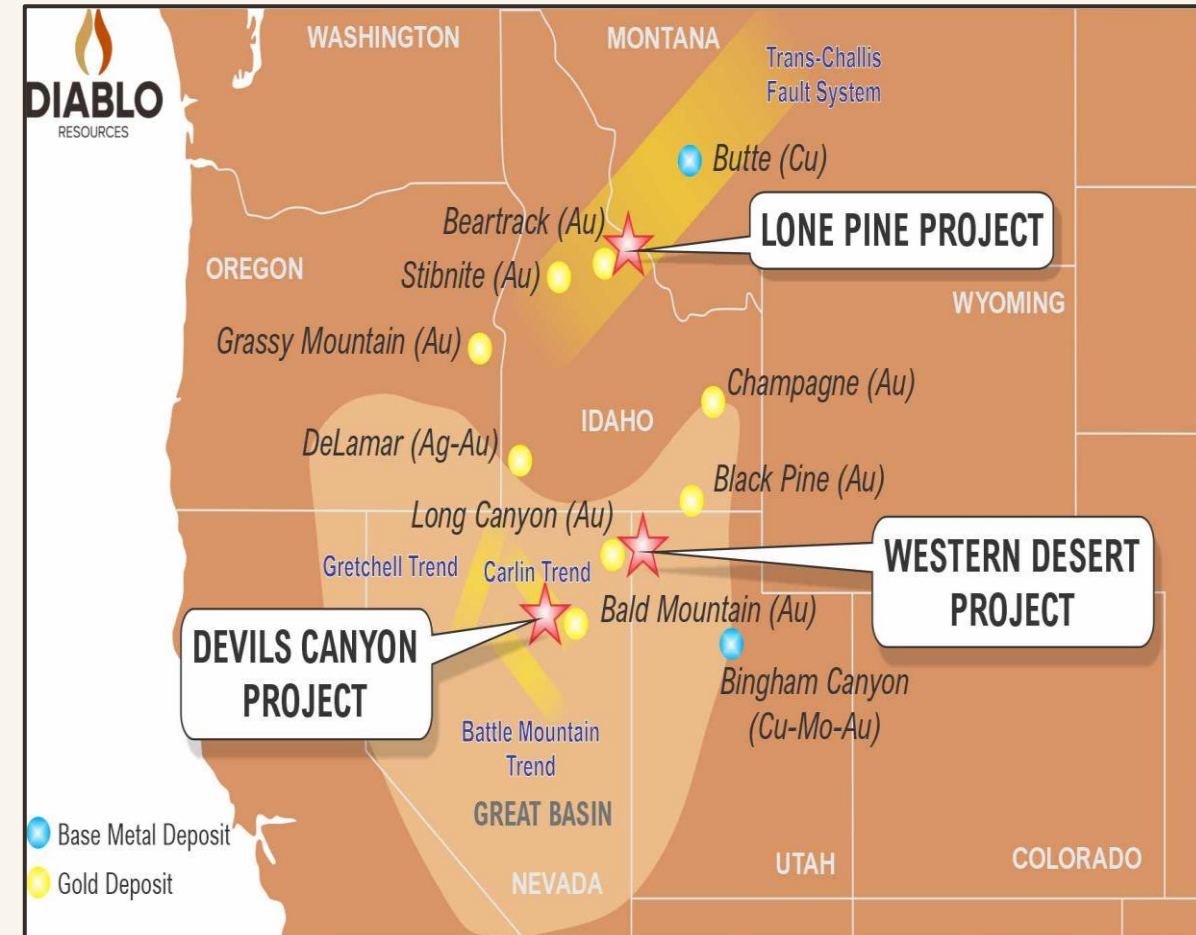
Geologist with over 30 years' experience. Has worked both domestically and internationally, including the Western USA.

LONE PINE GOLD PROJECT, DEVIL'S CANYON & WESTERN DESERT GOLD-COPPER PROJECTS

LOCATED IN PROLIFIC MINERALISED REGIONS- DRILL READY TARGETS



- **Three 100%-owned drill-ready exploration projects** located in Western USA
- **Lone Pine Gold Project** consists of 2 patented claims and 268 unpatented claims for 21.8km² within the Trans-Challis Fault system in Idaho^{8-17, 19}.
- **Devil's Canyon Gold-Copper Project** consists of 90 claims covering 7km² lying within the prolific Bald Mountain- Eureka Trend (Carlin Gold Trend) Nevada⁷⁻¹⁰
- **Western Desert Gold-Copper Project** consists of 258 claims and 1 state lease covering 25km² located north of Wendover, Utah, and 50km east of the Newmont owned, Long Canyon Mine with resources of 2.3Moz of gold^{2,3}
- **All Projects acquired at minimal cost**, the result of the Company identifying priority drill target areas in highly endowed mineral districts that are being tested through 2022.



LONE PINE GOLD PROJECT

POTENTIAL FOR MULTIPLE ZONES

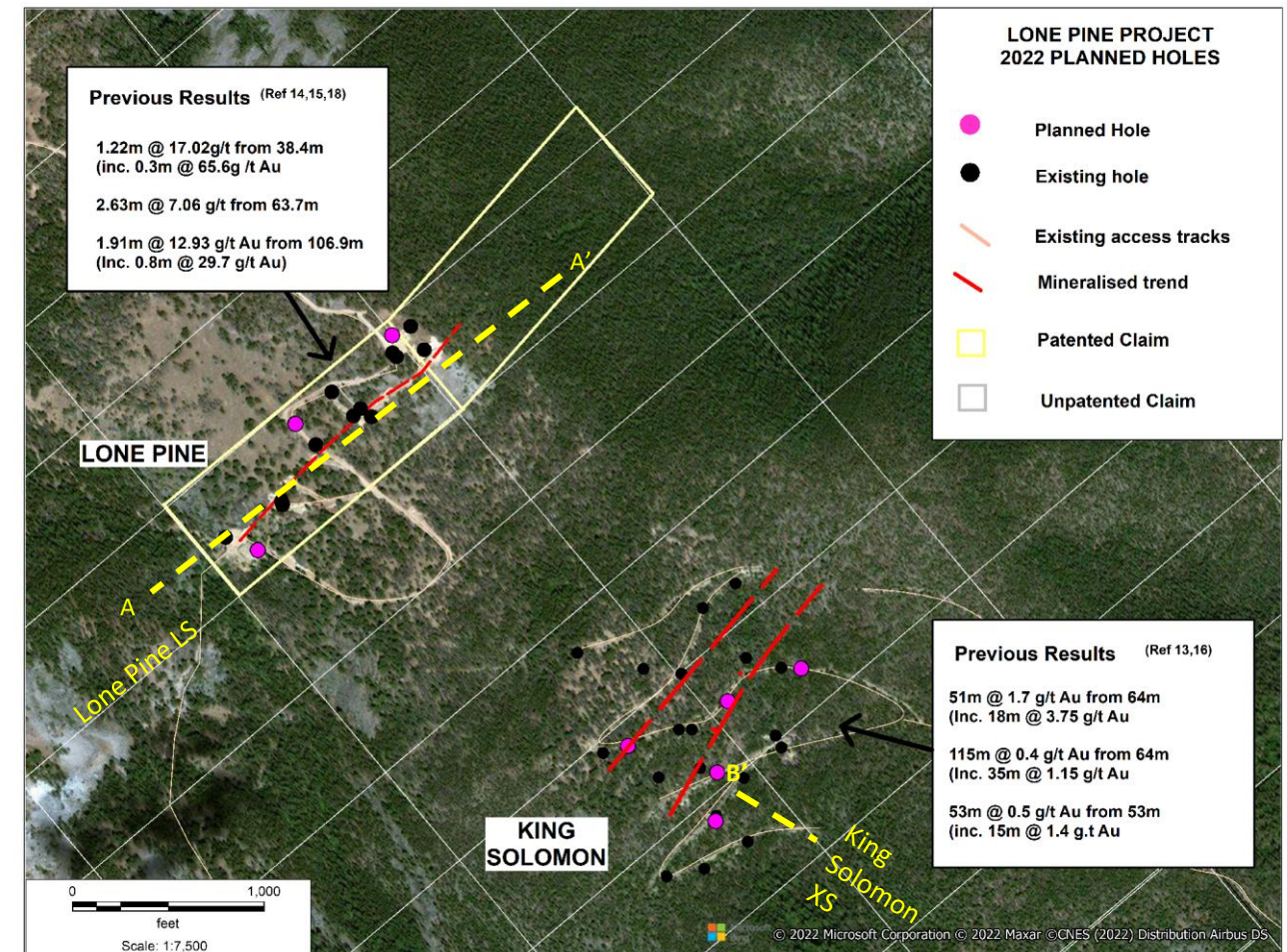
Located in Idaho 6km west of Revivals Gold's Beartrack Mine (3 Moz¹⁴) in a similar geological setting

Two priority areas to be targeted with drilling:

- **Lone Pine Vein Zone**
 - Quartz vein-clay alteration zone at granite-sediment contact
- **King Solomon Prospect**
 - Stockwork quartz veins & alteration in sheared granite and along sediment contact

DDH rig secured for Early Q3 start, initial 2000m programme planned.

Regional soil sampling planned for Q3-2022 to follow up high grade regional rock samples collected in 2020¹⁷



LONE PINE GOLD PROJECT

LONE PINE VEIN ZONE

HIGH GRADE MINERALISATION UNTESTED AT DEPTH



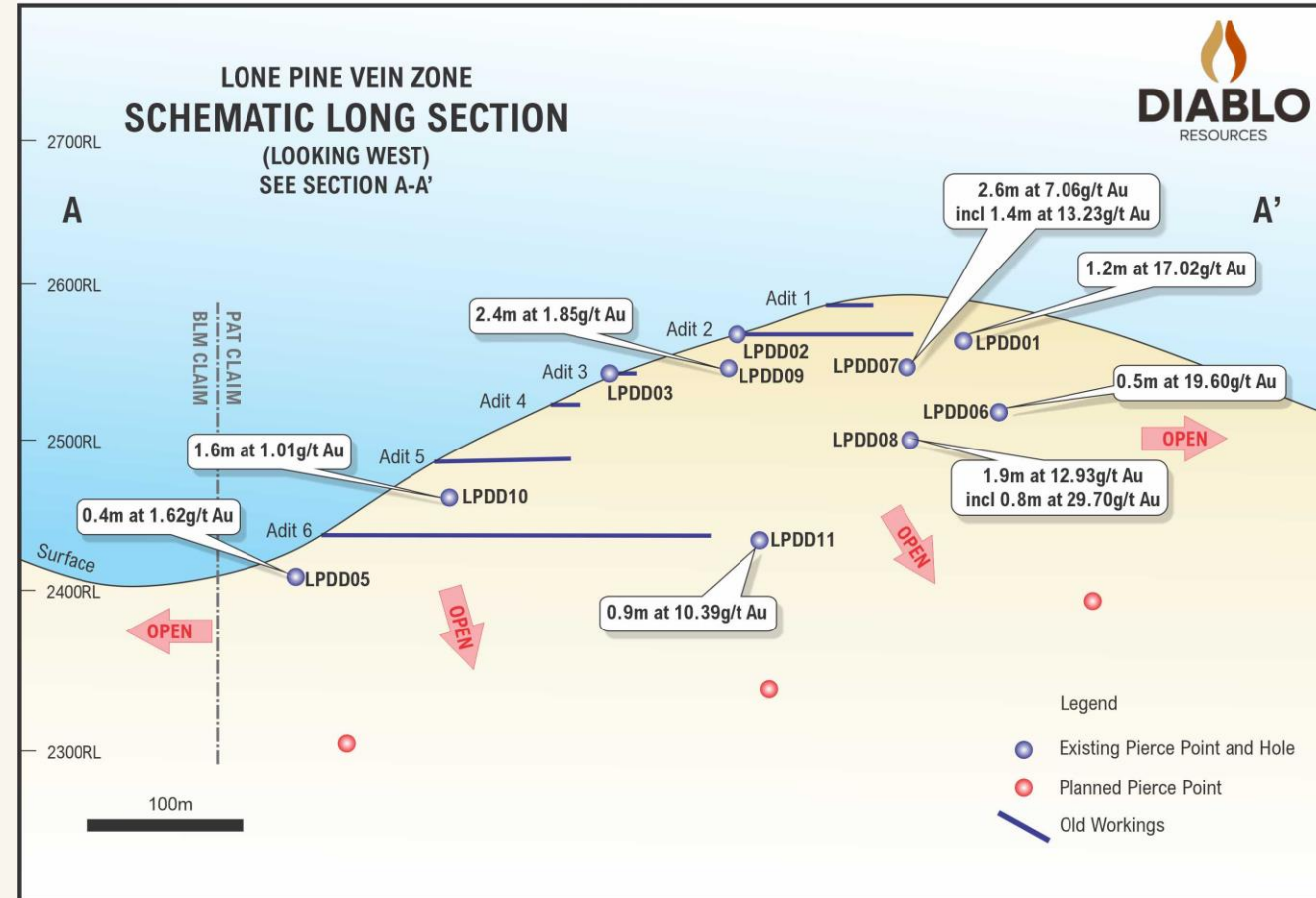
Drilling at Lone Pine Vein Zone (2020) intersected steeply dipping, high grade mineralisation associated with old workings^{14, 15, 18-19}:

- **17.02 g/t Au over 1.22m** in LPDD01 incl. **65.6 g/t Au over 0.3m**
- **7.06 g/t Au over 2.6m** in LPDD07 incl. **1.4m @ 13.23 g/t Au**
- **12.93 g/t Au over 1.9m** in LPDD08 incl. **29.7 g/t Au over 0.8m**

Planned drilling to test deeper portion of the mineralised zone well below old workings and previous drilling.

Drilling located in patented claims, USFS access permit in place. Rig secured for Early Q3-2022 start.

3 holes planned over 500m of strike. Vein zone is open in all directions.

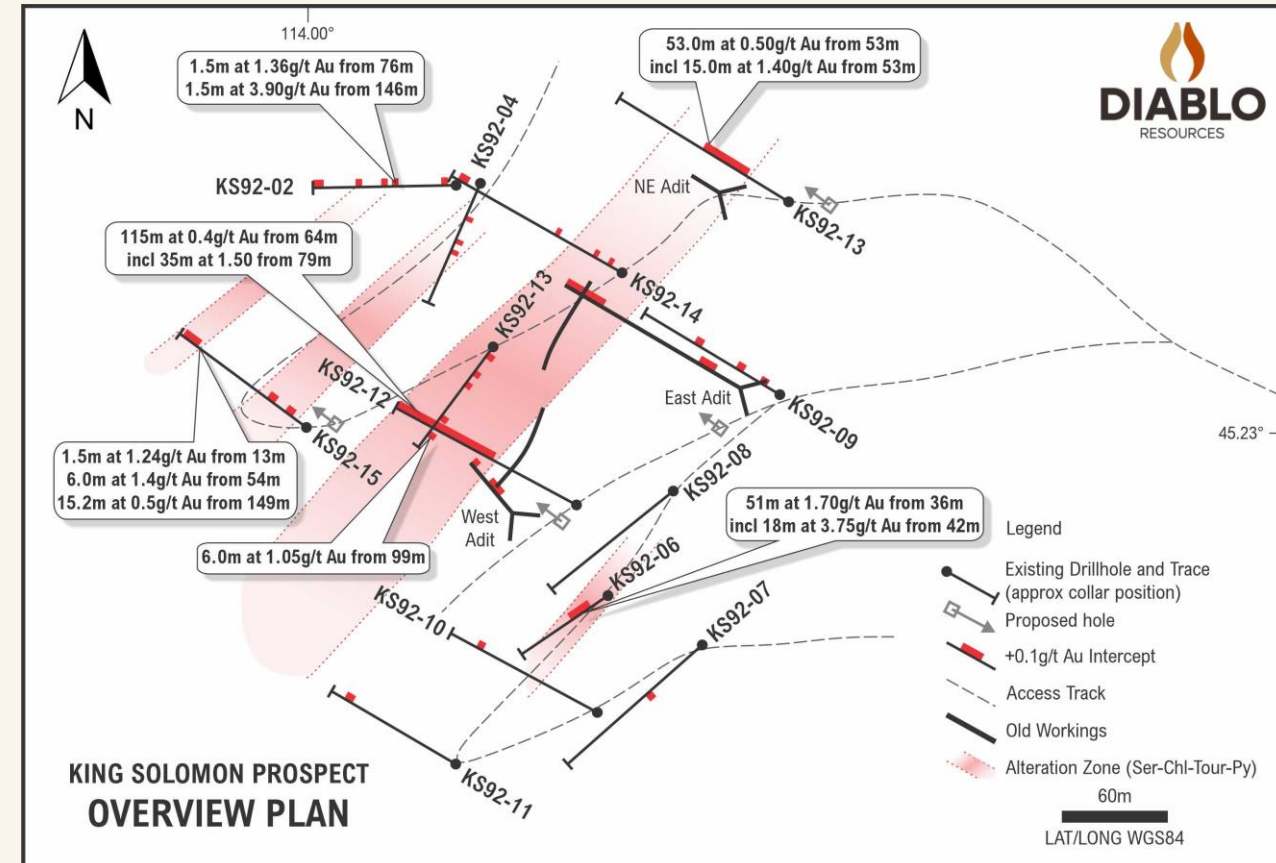


LONE PINE GOLD PROJECT

KING SOLOMON PROSPECT

BROAD STOCKWORK GOLD MINERALISATION

- Lies 600m SE of Lone Pine vein zone, three old adits and numerous shallow pits.
- Very little exploration in last 30 years, despite encouraging historical drilling results from the early 1990's including^{13,16}:
 - 115m @ 0.4 g/t Au from 64m Inc. 35m @ 1.15 g/t Au**
 - 51m @ 1.70 g/t Au from 36m, Inc. 18m @ 3.75 g/t Au**
 - 53m @ 0.5 g/t Au form 53m Inc. 15m @ 1.40 g/t Au**
 - 6.0m @ 1.4 g/t Au from 54m**
- Coarse gold was detected in assays from the historical drilling.

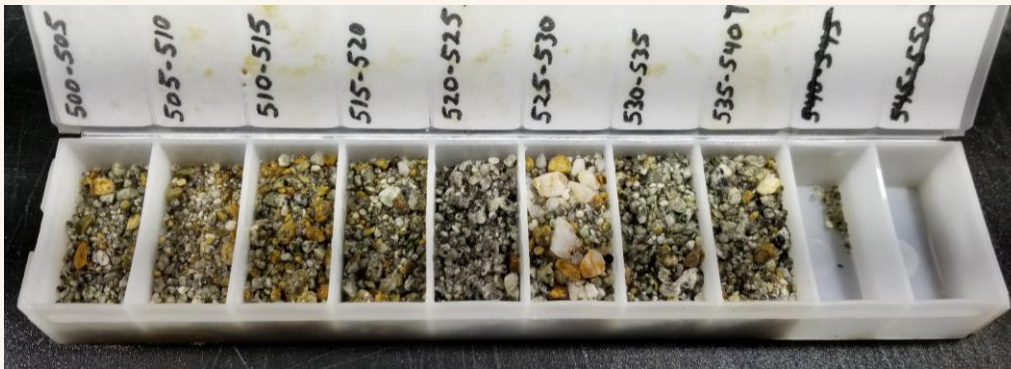


LONE PINE GOLD PROJECT

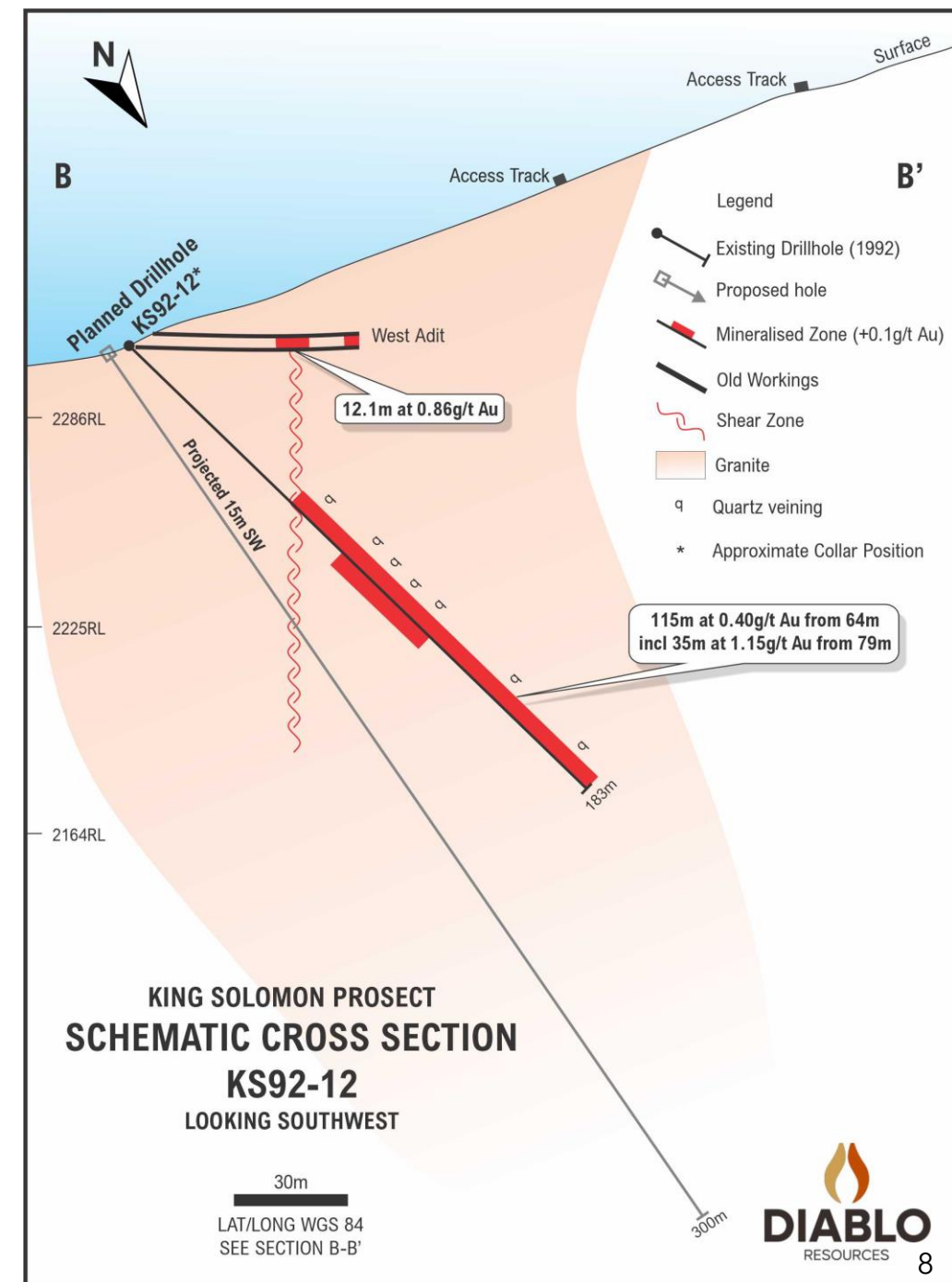
KING SOLOMON PROSPECT

BROAD STOCKWORK GOLD MINERALISATION

- DBO plans to complete the first ever programme of DDH drilling with screen fire assaying to account for the presence of coarse, nuggety gold.
- Geological target - Stockwork zone(s) in NE trending shear zone, associated with quartz veining and sericite-chlorite-tourmaline-pyrite alteration in porphyritic granite and along sediment contact.
- 4-5 holes planned over 400m of strike of mineralised zone to test deeper portions of gold bearing stockwork system
- Drilling permit submitted to USFS, anticipated start Q3-2022, following on from Lone Pine vein zone drilling.



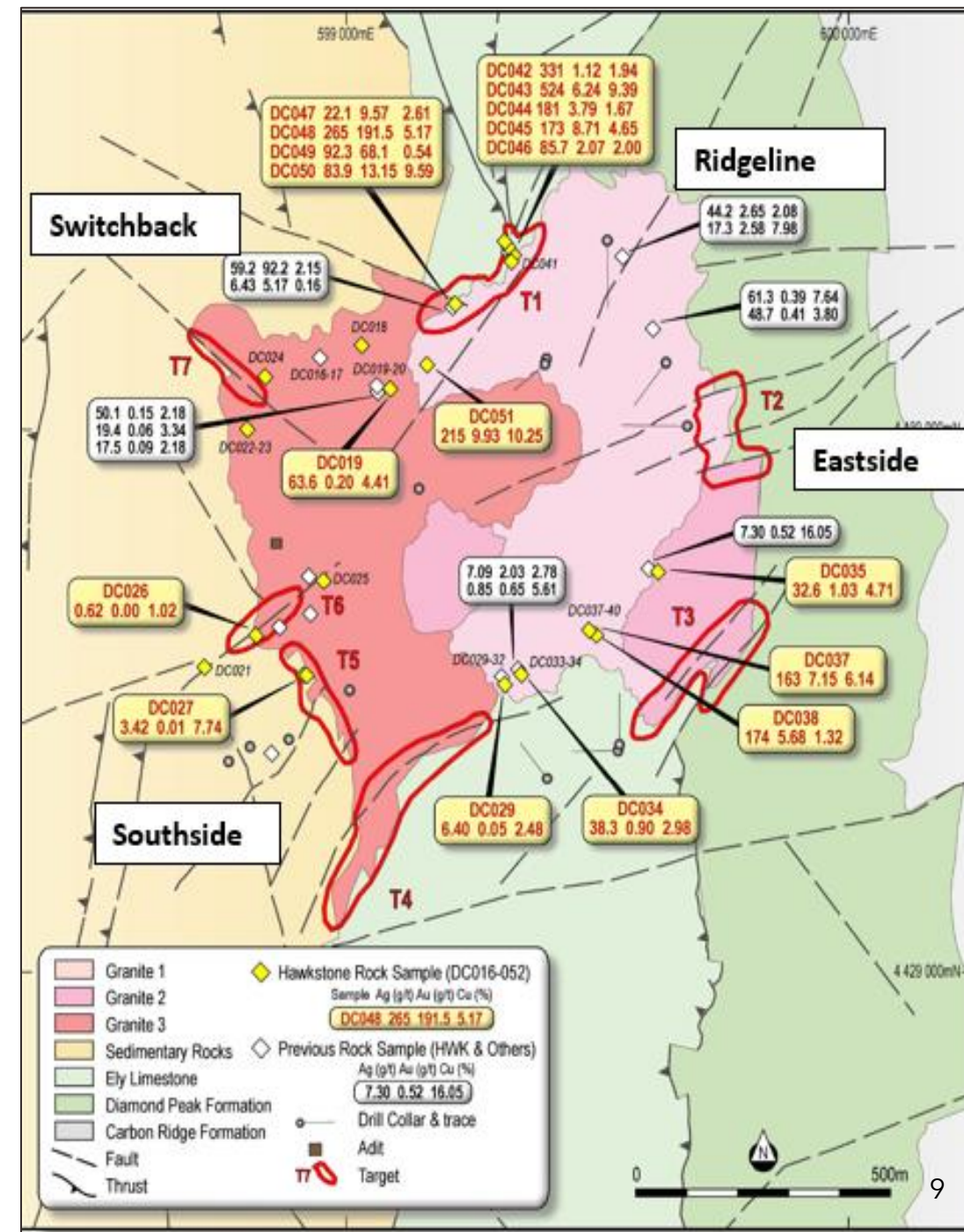
KS92 -15 500-540 ft (152-165m)



DEVIL'S CANYON PROJECT

MULTIPLE HIGH GRADE GOLD-COPPER TARGETS

- **Rock Sample results and reconnaissance mapping** returned high grade mineralisation ⁷⁻¹⁰ associated with multiple intrusive phases
- Peak results to **191.5 g/t Au, 524 g/t Ag and 16.05% Cu** ⁷⁻¹⁰
- **Airborne magnetic survey identified geophysical features interpreted to represent:**
 - Magnetite skarn alteration at lithological contacts and along structures
 - Zones of magnetite destruction possibly related to later mineralizing events
- Surface geochemical sampling, detailed mapping and maiden DDH drill programme planned for 2022.



WESTERN DESERT GOLD-COPPER PROJECT

CARLIN STYLE MINERALISATION INTERSECTED

Maiden (5 hole) wide spaced drill programme identified Carlin-style mineralisation at the A3 and Copper Blossom Prospects ²³

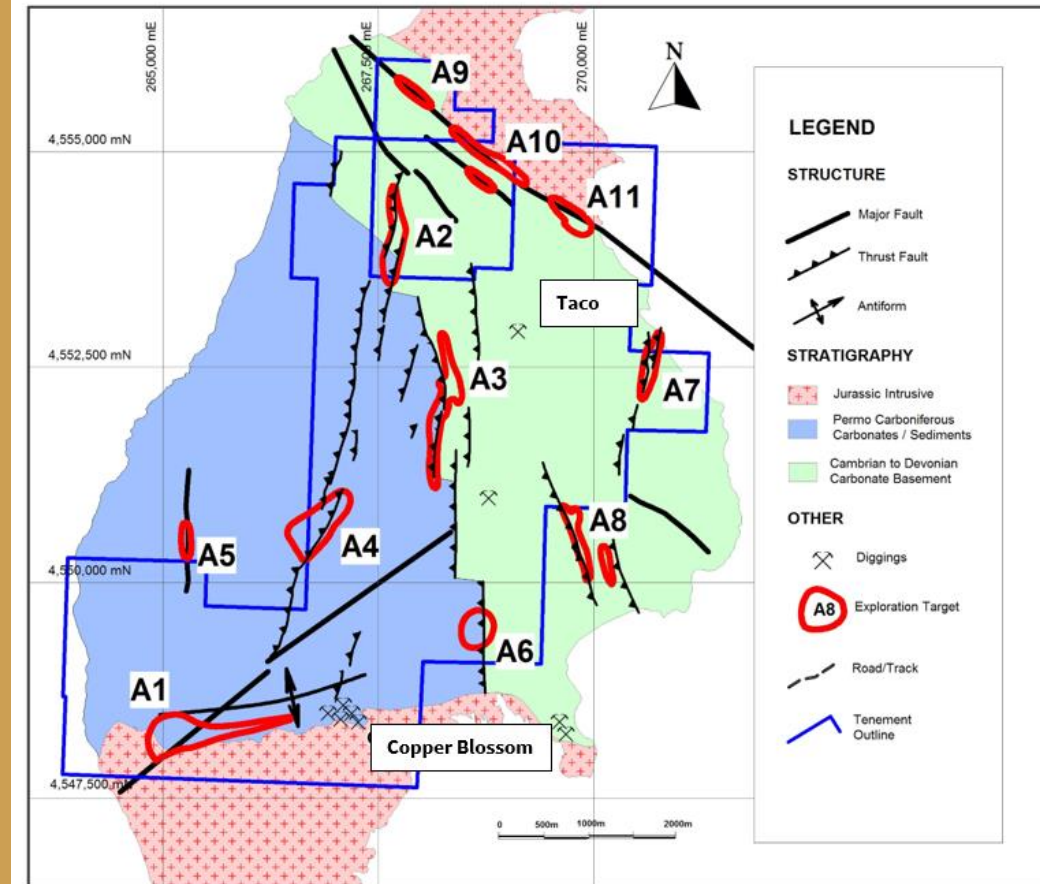
- Broad zones of anomalous Ag intersected with associated As, Sb, Hg, Te, Ba, Mn and Au in carbonates and shales
- Mineralised lamprohyres intersected at A3 - confirm deep seated regional structural framework
- Geological features inc. dissolution structures, brecciation, jasperoidal replacement of limestones noted - typical of Carlin style mineralized systems



Dissolution structures
in limestone



Pale Brown jasperoidal replacement



WESTERN DESERT GOLD-COPPER PROJECT

LARGE GEOCHEMICAL AND STRUCTURAL TARGET

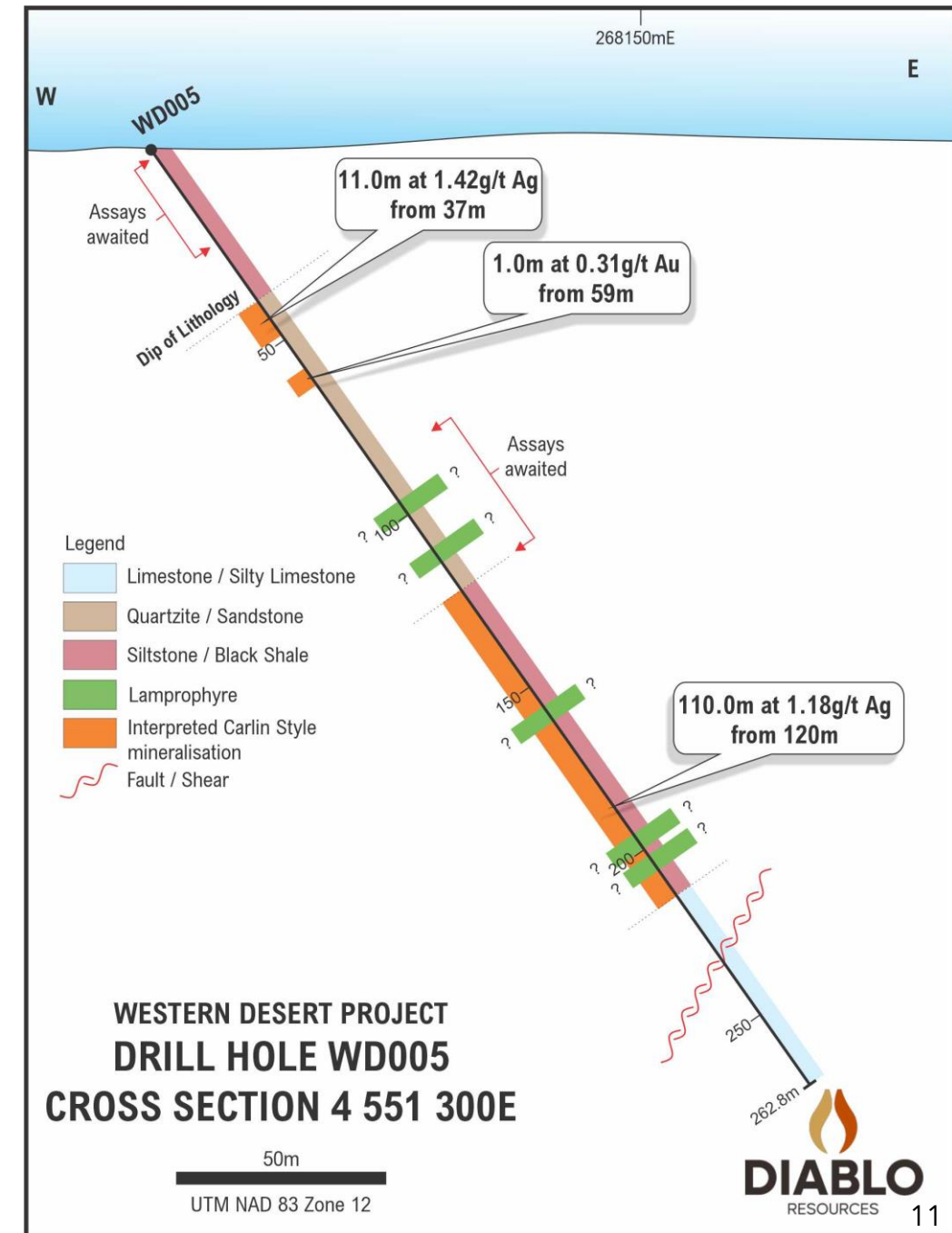
A3 Prospect - 1500m long coincident structural, geophysical and geochemical target. Two holes drilled 500m apart (WD004 & 005). Carlin style mineralisation and alteration intersected in both holes²³.

- WD005 - **110m @ 1.18 g/t Ag** from 120-230m downhole with associated anomalous As, Sb, Hg, Ba and Au.
- Detail mapping and sampling planned (Q3/2022) to aid in drill targeting.



Strong alteration in sediments in drill hole WD005.

205.92-208.69m



NEWSFLOW CATALYSTS

DRILLING PLANNED AT SEVERAL PROSPECTS FOR 2022



LONE PINE PROJECT

| | |
|--|------------|
| Drilling Lone Pine & King Solomon | Q3-Q4 2022 |
| Surface Geochemistry, Geological Mapping | Q3/2022 |

DEVIL'S CANYON GOLD-COPPER PROJECT

| | |
|--|------------|
| Surface Geochemistry, Geological Mapping | Q4/2022 |
| Maiden Drill Program | Q3-Q4 2022 |

WESTERN DESERT GOLD-COPPER PROJECT

| | |
|-----------------------------|---------|
| Geological Mapping/Sampling | Q3/2022 |
|-----------------------------|---------|





DIABLO
RESOURCES

For further information:
Lyle Thorne,
Chief Executive Officer
lt@diablorresources.com.au

Office
Level 2, 10 Outram Street
West Perth WA 6005
+61 08 6383 7837

ASX:DBO
diablorresources.com.au

APPENDIX

ASX REFERENCES



Western Desert

1. ASX Announcement 16/03/2020, Acquisition of Western Desert Gold - Copper Project, Utah, USA, Hawkstone Mining Ltd
2. ASX Announcement 03/07/2021 –Hawkstone Mining Ltd 950% increase in Western Desert Copper-Gold Project.
3. Barrick Gold Corporation, 2020. Annual Report 2020. www.barrick.com
4. New Placer Dome, 2021. Kingsley Mountain Project. www.newplacerdome.com
5. West Kirkland Mining Inc, 2012. West Kirkland Files TUG Resource Estimate on SEDAR. 16 July 2012
6. Rio Tinto, 2021. Increase in Mineral Resource at Kennecott Copper operation following mine life extension studies. ASX Announcement, 17 February 2021.

Devils Canyon

7. ASX Announcement 7/10/2020, Acquisition of Carlin Trend Gold Project, Hawkstone Mining Ltd
8. ASX Announcement 23/10/2020, Hawkstone Mining Ltd. Target A1 Identified Over 92.2 g/t Gold Rock Chip Sample at Devil's Canyon Gold Project
9. ASX Announcement 2/12/2020, Hawkstone Mining Ltd. High Grade Gold and Copper Results at Devil's Canyon Gold Project, Nevada
10. ASX Announcement 1/02/2021, Hawkstone Mining Ltd. Devil's Canyon Gold Project High Grade Assays to 191.5 g/t Gold

Lone Pine

11. ASX Announcement 3/02/2020, Hawkstone Mining Ltd. Acquisition of Historical High Grade Lone Pine Project
12. ASX Announcement 18/6/2020. Hawkstone Mining Ltd .Maiden Drill Programme to Commence at Lone Pine Gold Project.
13. ASX Announcement. Hawkstone Mining Ltd.1/7/ 2020. Acquisition of King Solomon Mine Adjacent to Lone Pine Gold Project.
14. ASX Announcement . Hawkstone Mining Ltd. 13/7/ 2020. Lone Pine Project Exploration Update.
15. ASX Announcement. Hawkstone Mining Ltd. 6/8/2020. HWK Mobilised Larger Additional Rig to Lone Pine.
16. ASX Announcement. Hawkstone Mining Ltd. 27/08/ 2020. Completion of King Solomon Acquisition and Exploration Update.
17. Revival Gold Presentation Oct 5, 2020 (revival-gold.com)
18. ASX Announcement 25/11/2020, Hawkstone Mining Ltd Final Drill Results Confirm, Lone Pine High Grade Potential
19. ASX Announcement. Hawkstone Mining Ltd. 15/09/ 2020. Initial Drilling Confirms High Grade Mineralisation at the Lone Pine Gold Project.
20. ASX Announcement 9/12/2020, Hawkstone Mining Ltd High Grade Rock Chip samples up to 24.7 g/t Au Identify Further Mineralised Zones

General

21. Diablo Resources Prospectus, <https://diabloresources.com.au/>
22. ASX Announcement Diablo Resources Ltd. 22/11/21- Exploration Update
23. ASX Announcement. Diablo Resources Ltd. 3/5/22 . Exploration Update- Encouraging Results returned from Western Desert