



New Chilean Gold District confirmed at El Zorro New Drill Targets Defined & Drilling Resumes

Highlights

- Surface mapping and sampling has identified the presence of gold bearing intrusions over 33km, confirming El Zorro as a new Chilean Intrusive Related Gold System (**IRGS**) district.
- Wide zones of surface gold anomalism analogous to the Ternera Gold Deposit (1.1Moz Au) identified.
- Compelling new Ternera “lookalike” drill targets defined.
- Channel sampling of wide outcropping gold zones include:
 - TR11629_COQ_A – 3.00m @ 4.58g/t Au;
 - TR1370_COQ_A - 18.00m @ 0.49g/t Au including 3.00m @ 1.37g/t Au and 3.00m @ 1.22g/t Au;
 - TR1555_COQ_A - 2.00m @ 5.01g/t Au;
 - TR1735_COQ_A - 39.00m @ 0.34g/t Au including 3.00m @ 2.42g/t Au and 3.00m @ 1.63g/t Au; and
 - TR1807_COQ_A - 30.00m @ 0.20g/t Au including 3.00m @ 0.77g/t Au.
- Mapping and sampling work is ongoing to further expand and define new targets.
- Drilling to resume at Ternera in coming days.

Tesoro Gold Limited (Tesoro or the Company) (ASX:TSO, OTCQB:TSORF) is pleased to announce assay results from recent detailed surface sampling and mapping programs which are ongoing at the Company's El Zorro Gold Project (**El Zorro**) in Chile.

District and regional mapping at El Zorro have identified outcropping El Zorro Tonalite (**EZT**) intrusive rocks extending over 33km, the EZT is the favourable host and likely source of gold mineralisation at El Zorro. The widespread occurrence of the rocks confirms El Zorro as a new Chilean IRGS Gold District, the first of its kind discovered in Chile. Tesoro's concessions cover approximately 60km of prospective strike.

Mapping has identified a highly prospective north-south trending “gold” zone with outcropping occurrences of the EZT occurring as discrete dykes, as well as dyke swarms, which extend from approximately 8km south of the Ternera Gold Deposit to approximately 25km north of the Ternera Gold Deposit. The north-south trending zone is approximately 15km wide east to west (Figure 1).

In addition, the Company has completed initial sampling over 12km of strike, confirming the presence of gold within the favourable host rocks and further expanding the gold footprint at El Zorro.

Detailed surface mapping and sampling work has been completed over the new Kitsune and Calderillas targets where abundant EZT dyke swarms have previously been identified (ASX announcement - 19 April 2022). Wide outcropping gold zones having been identified which have similarities to the surface footprint of the Ternera Gold Deposit. Results for 1,463 samples have been received, full results are presented in Appendix 1.

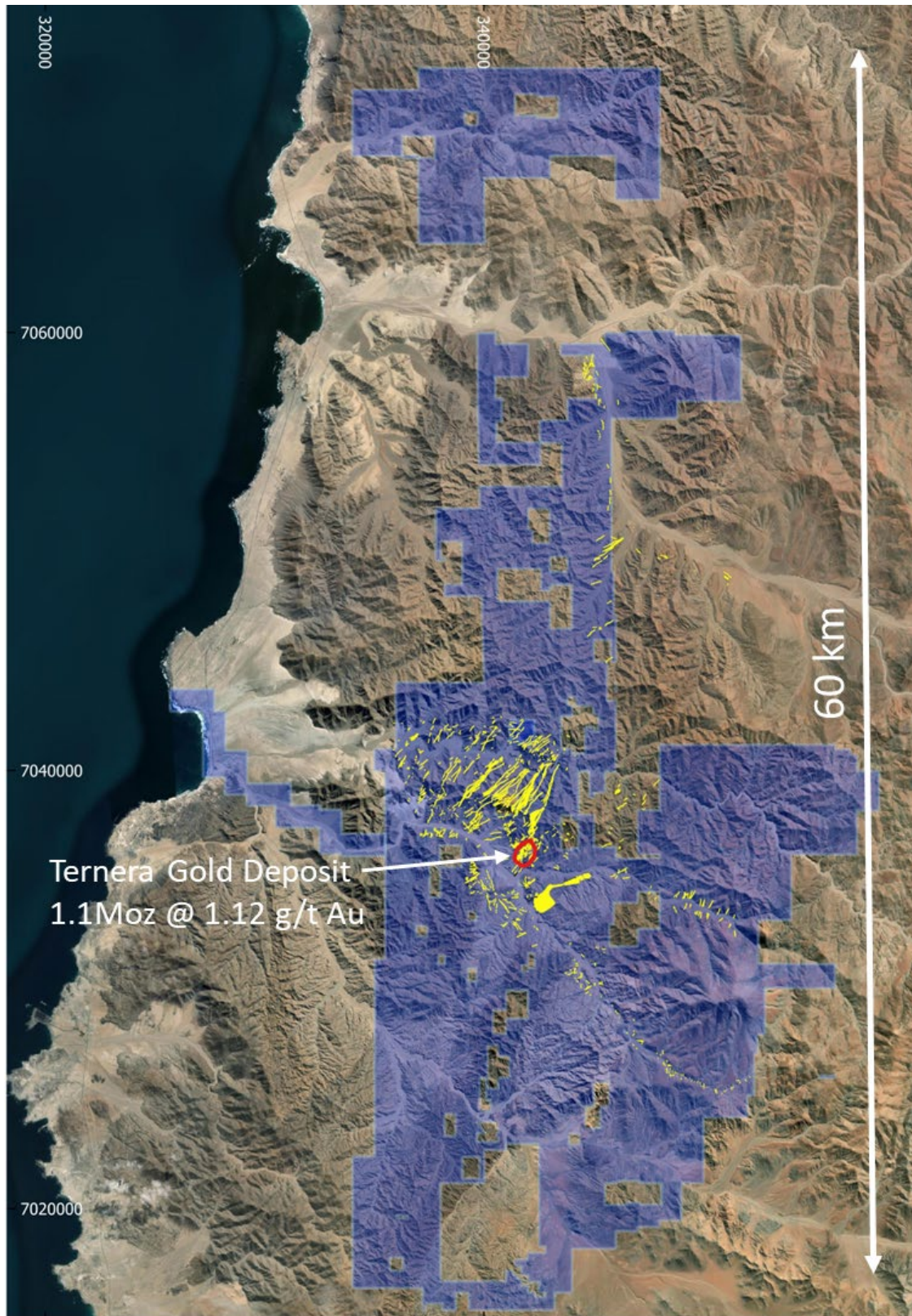


Figure 1 - El Zorro Gold Project Concession Area (blue). Yellow indicates mapped surface outcrop of El Zorro Tonalite bodies, the main gold host rock at El Zorro. Datum PSAD56 19.S. (Refer to MRE ASX Announcement 23 May 2022)

Tesoro Managing Director, Zeff Reeves commented:

"Our recent exploration activities have now confirmed that El Zorro is a new gold district. Tesoro has now identified the host EZT over 33km of strike, 12km of which we have now completed initial sampling and expanded the gold footprint across a wide area."

Assay results received from the work at the new Kitsune and Calderillas targets also indicate that these areas have a very similar surface gold characteristics to the 1.1Moz Ternera Gold Deposit and offer compelling drill targets. We aim to drill both targets in the coming weeks as well as continue to define further targets in the expanding El Zorro Gold District."

El Zorro District Mapping Programs

Tesoro holds approximately 600km² of concessions covering approximately 60km of prospective strike at El Zorro. Recent work has focussed on expanding the known footprint of the main gold host rocks at El Zorro, the EZT. The EZT occurs as intrusions, typically as dykes, sills and as swarms. The 1.1Moz Ternera Gold Deposit is predominantly hosted within a swarm of EZT dykes.

Mapping has significantly increased the potential for the project to host additional gold mineralisation. Anomalous gold results have been returned from initial rock chip sampling including 3.00m @ 1.17g/t Au approximately 8km south of Ternera within an altered EZT outcrop (Figure 2).

These results and the occurrence of the EZT within a distinctive north-south belt confirm the district scale potential at El Zorro. Mapping teams are continuing to expand the prospective zone, particularly to the north, as well as commencing follow up sampling activities to determine future drill targets.

El Zorro New Gold Targets

Detailed surface sampling and mapping programs have identified two new high priority targets to the north of Ternera, the Kitsune and Calderillas targets. These targets are characterised by strike extensive dyke swarms of the EZT coincident with broad gold zones up to 45m wide in outcrop (Figures 3 and 4). Both targets exhibit similar gold anomaly patterns and tenor to the surface expression of gold mineralisation at Ternera (Figure 5).

Gold mineralisation at these areas is well developed within the EZT where it is closely associated with north-west trending fault systems and associated alteration and sheeted veining. Work is ongoing at both targets to better define drill targets, with drilling aimed to commence by late July to early August 2022.

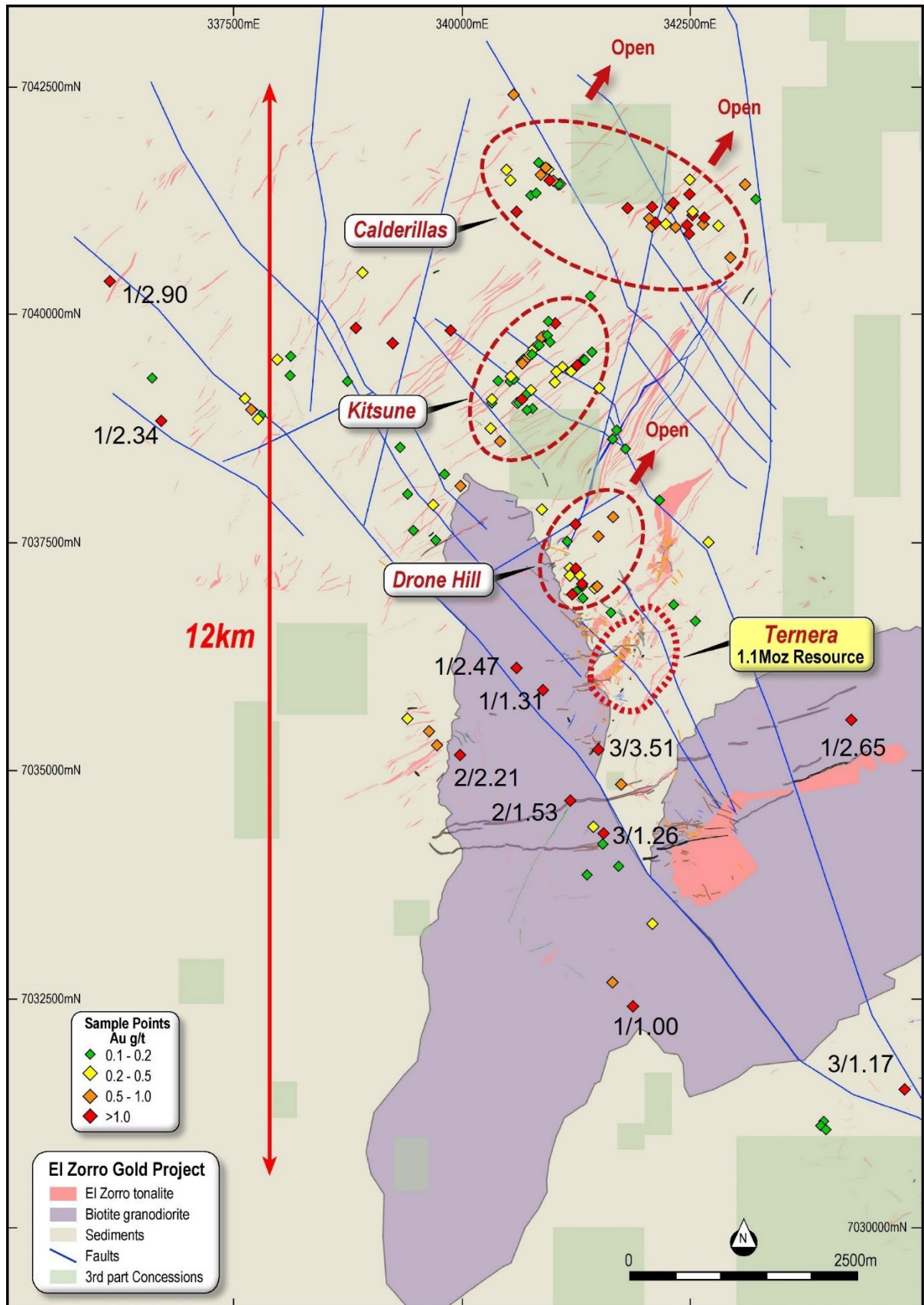


Figure 2 - El Zorro Gold Project Ternera District Map and targets showing highlighted >1g/t first pass channel sample results reported in this announcement (width/Au g/t), demonstrating the large-scale nature of the El Zorro mineralisation system.

Drilling

Drilling and earthmoving equipment has arrived at El Zorro in preparation for recommencement of drilling activities at the project. Drilling will commence at Ternera in the coming days to further define and expand the existing mineral resource estimate. Drilling on the new district targets will commence in late July to early August 2022 following receipt of additional surface sampling results to further define drill targets.



Figure 5 – Drilling equipment arriving on site at El Zorro

This ASX Announcement has been approved for release by the Board of Tesoro Gold Ltd.

For more information, please contact:

Zeff Reeves
Managing Director
info@tesorogold.com.au

Peter Taylor
Investor Relations
Peter@nwrcommunications.com.au
0412 036 231

About Tesoro Gold

Tesoro Gold Limited was established with a strategy of acquiring, exploring, and developing mining projects in the Coastal Cordillera region of Chile. The Coastal Cordillera region is host to multiple world class copper and gold mines, has well established infrastructure, service providers and an experienced mining workforce. Large areas of the Coastal Cordillera remain unexplored due to the unconsolidated nature of mining concession ownership, but Tesoro, via its in-country network and experience has been able secure rights to a district scale gold project in-line with the Company's strategy. Tesoro's 95% owned Chilean subsidiary owns 85% of the El Zorro Gold Project.



Competent Persons Statement

The information in this report that relates to Exploration Results is based on information compiled by Mr Zeffron Reeves (B App Sc (Hons) Applied Geology) MBA, MAIG). Mr Reeves is a member of the Australian Institute of Geoscientists and a Director and shareholder of the Company. Mr Reeves has sufficient experience that is relevant to the style of mineralisation and type of deposit under consideration and to the activity which he is undertaking to qualify as a Competent Person as defined in the 2012 Edition of the Australasian Code for Reporting of Exploration Results, Mineral Resources and Ore Reserves. Mr Reeves consents to the inclusion in this report of the matters based on this information in the form and context in which it appears.

The information in this report that relates to Mineral Resources is based on information compiled by Mr Lynn Widenbar, a Competent Person who is a Member of The Australasian Institute of Mining and Metallurgy. Mr Widenbar is acting as an independent consultant to Tesoro Gold Limited. Mr Widenbar has sufficient experience that is relevant to the style of mineralisation and type of deposit under consideration, and to the activity being undertaken to qualify as a Competent Person as defined in the 2012 Edition of the 'Australasian Code for Reporting of Exploration Results, Mineral Resources and Ore Reserves'. The Company confirms that the form and context in which the Competent Person's findings are presented have not been materially modified from the original announcement on 23 May 2022.

Future Performance

This announcement may contain certain forward-looking statements and opinion. Forward-looking statements, including projections, forecasts and estimates, are provided as a general guide only and should not be relied on as an indication or guarantee of future performance and involve known and unknown risks, uncertainties, assumptions, contingencies and other important factors, many of which are outside the control of the Company and which are subject to change without notice and could cause the actual results, performance or achievements of the Company to be materially different from the future results, performance or achievements expressed or implied by such statements. Past performance is not necessarily a guide to future performance and no representation or warranty is made as to the likelihood of achievement or reasonableness of any forward-looking statements or other forecast. Nothing contained in this announcement, nor any information made available to you is, or and shall be relied upon as, a promise, representation, warranty or guarantee as to the past, present or the future performance of Tesoro.

APPENDIX 1 – CHANNEL SAMPLING DETAILS

TRENCH ID	UTM E	UTM N	FROM	TO	width (m)	Sample ID	Au ppm	TRENCH ID	UTM E	UTM N	FROM	TO	width (m)	Sample ID	Au ppm
TR1363 COQ A	341062	7041421	0.00	3.00	3.00	TRC198912	0.06	TR1436 COQ A	343324	7031180	0.00	2.00	2.00	TRC198559	0.005
TR1363 COQ A	341062	7041423	3.00	6.00	3.00	TRC198914	0.05	TR1437 COQ A	343509	7030860	0.00	1.00	1.00	TRC198560	0.005
TR1363 COQ A	341064	7041427	6.00	9.00	3.00	TRC198915	0.02	TR1438 COQ A	343638	7030789	0.00	2.00	2.00	TRC198562	0.005
TR1364 COQ A	341065	7041435	0.00	3.00	3.00	TRC198916	0.4	TR1438 COQ A	343638	7030791	2.00	4.00	2.00	TRC198563	0.005
TR1364 COQ A	341068	7041437	3.00	6.00	3.00	TRC198917	0.31	TR1438 COQ A	343639	7030793	4.00	6.00	2.00	TRC198564	0.01
TR1365 COQ A	341046	7041438	0.00	3.00	3.00	TRC198918	0.23	TR1439 COQ A	343702	7031240	0.00	1.00	1.00	TRC198565	0.005
TR1366 COQ A	341053	7041446	0.00	3.00	3.00	TRC198919	0.06	TR1440 COQ A	343317	7030921	0.00	2.00	2.00	TRC198566	0.005
TR1366 COQ A	341056	7041447	3.00	6.00	3.00	TRC198920	0.15	TR1441 COQ A	343682	7030754	0.00	1.00	1.00	TRC198567	0.005
TR1367 COQ A	341047	7041488	0.00	3.00	3.00	TRC198922	0.01	TR1442 COQ A	343676	7030761	0.00	1.00	1.00	TRC198568	0.03
TR1368 COQ A	341019	7041473	0.00	3.00	3.00	TRC198923	0.05	TR1443 COQ A	343669	7030791	0.00	1.00	1.00	TRC198570	0.005
TR1368 COQ A	341020	7041474	3.00	6.00	3.00	TRC198924	0.005	TR1444 COQ A	343635	7030778	0.00	1.00	1.00	TRC198571	0.005
TR1369 COQ A	340999	7041460	0.00	3.00	3.00	TRC198925	0.27	TR1445 COQ A	343645	7030796	0.00	1.00	1.00	TRC198572	0.01
TR1369 COQ A	341001	7041461	3.00	6.00	3.00	TRC198926	0.31	TR1446 COQ A	343842	7030929	0.00	3.00	3.00	TRC198573	0.005
TR1369 COQ A	341004	7041462	6.00	9.00	3.00	TRC198927	0.37	TR1447 COQ A	343768	7031047	0.00	2.00	2.00	TRC198574	0.005
TR1369 COQ A	341006	7041465	9.00	12.00	3.00	TRC198928	0.9	TR1448 COQ A	343934	7031125	0.00	1.00	1.00	TRC198575	0.16
TR1369 COQ A	341009	7041466	12.00	15.00	3.00	TRC198930	0.01	TR1449 COQ A	342294	7034974	0.00	2.00	2.00	TRC198576	0.005
TR1370 COQ A	340969	7041487	0.00	3.00	3.00	TRC198931	0.08	TR1450 COQ A	342256	7035048	0.00	2.00	2.00	TRC198578	0.005
TR1370 COQ A	340971	7041484	3.00	6.00	3.00	TRC198932	0.02	TR1451 COQ A	342239	7035023	0.00	3.00	3.00	TRC198579	0.005
TR1370 COQ A	340965	7041478	6.00	9.00	3.00	TRC198933	0.12	TR1452 COQ A	342136	7035076	0.00	2.00	2.00	TRC198580	0.005
TR1370 COQ A	340967	7041478	9.00	12.00	3.00	TRC198934	0.15	TR1452 COQ A	342135	7035078	2.00	4.00	2.00	TRC198581	0.04
TR1370 COQ A	340966	7041475	12.00	15.00	3.00	TRC198935	1.37	TR1453 COQ A	342134	7035098	0.00	2.00	2.00	TRC198582	0.005
TR1370 COQ A	340968	7041472	15.00	18.00	3.00	TRC198936	0.01	TR1453 COQ A	342132	7035098	2.00	3.00	1.00	TRC198583	0.005
TR1370 COQ A	340968	7041469	18.00	21.00	3.00	TRC198938	0.05	TR1453 COQ A	342131	7035098	3.00	4.00	1.00	TRC198584	0.005
TR1370 COQ A	340966	7041467	21.00	24.00	3.00	TRC198939	1.22	TR1454 COQ A	342127	7035152	0.00	2.00	2.00	TRC198586	0.005
TR1371 COQ A	340948	7041499	0.00	3.00	3.00	TRC198940	0.07	TR1454 COQ A	342125	7035152	2.00	4.00	2.00	TRC198587	0.005
TR1371 COQ A	340950	7041496	3.00	6.00	3.00	TRC198941	0.01	TR1455 COQ A	342128	7035234	0.00	1.00	1.00	TRC198588	0.005
TR1371 COQ A	340951	7041494	6.00	9.00	3.00	TRC198942	0.07	TR1456 COQ A	342173	7035286	0.00	2.00	2.00	TRC198589	0.005
TR1371 COQ A	340952	7041493	9.00	12.00	3.00	TRC198943	0.01	TR1457 COQ A	341931	7034598	0.00	1.00	1.00	TRC198590	0.005
TR1371 COQ A	340954	7041491	12.00	15.00	3.00	TRC198944	0.06	TR1458 COQ A	341937	7034593	0.00	2.00	2.00	TRC198591	0.01
TR1371 COQ A	340952	7041488	15.00	18.00	3.00	TRC198946	0.02	TR1458 COQ A	341935	7034593	2.00	4.00	2.00	TRC198592	0.005
TR1372 COQ A	340596	7041133	0.00	3.00	3.00	TRC198947	2.77	TR1459 COQ A	341928	7034648	0.00	1.00	1.00	TRC198594	0.005
TR1373 COQ A	340565	7041399	0.00	3.00	3.00	TRC198948	0.02	TR1460 COQ A	341935	7034658	0.00	3.00	3.00	TRC198595	0.005
TR1374 COQ A	340525	7041465	0.00	3.00	3.00	TRC198949	0.24	TR1461 COQ A	341950	7034775	0.00	2.00	2.00	TRC198596	0.005
TR1374 COQ A	340525	7041468	3.00	6.00	3.00	TRC198950	0.01	TR1462 COQ A	342136	7035020	0.00	2.00	2.00	TRC198597	0.005
TR1374 COQ A	340528	7041468	6.00	9.00	3.00	TRC198951	0.005	TR1463 COQ A	342140	7035015	0.00	1.00	1.00	TRC198598	0.01
TR1375 COQ A	340519	7041532	0.00	3.00	3.00	TRC198952	0.01	TR1464 COQ A	342144	7035003	0.00	2.00	2.00	TRC198599	0.005
TR1375 COQ A	340518	7041534	3.00	6.00	3.00	TRC198954	0.005	TR1464 COQ A	342142	7035003	2.00	4.00	2.00	TRC198600	0.005
TR1376 COQ A	340480	7041588	0.00	3.00	3.00	TRC198955	0.48	TR1464 COQ A	342141	7035003	4.00	5.00	1.00	TRC197002	0.01
TR1377 COQ A	340509	7041826	0.00	3.00	3.00	TRC198956	0.005	TR1465 COQ A	342147	7034892	0.00	1.00	1.00	TRC197003	0.005
TR1378 COQ A	340501	7041804	0.00	3.00	3.00	TRC198957	0.005	TR1465 COQ A	342148	7034892	1.00	2.00	1.00	TRC197004	0.005
TR1379 COQ A	340426	7041777	0.00	3.00	3.00	TRC198958	0.01	TR1466 COQ A	341769	7034828	0.00	1.00	1.00	TRC197005	0.04
TR1380 COQ A	340163	7041700	0.00	1.00	1.00	TRC198959	0.02	TR1467 COQ A	341739	7034858	0.00	3.00	3.00	TRC197006	0.84
TR1381 COQ A	340253	7041585	0.00	3.00	3.00	TRC198960	0.005	TR1468 COQ A	341806	7034872	0.00	3.00	3.00	TRC197007	0.02
TR1382 COQ A	340439	7041161	0.00	3.00	3.00	TRC198962	0.005	TR1469 COQ A	341904	7034937	0.00	2.00	2.00	TRC197008	0.005
TR1383 COQ A	340395	7041157	0.00	3.00	3.00	TRC198963	0.005	TR1470 COQ A	341901	7034958	0.00	3.00	3.00	TRC197010	0.005
TR1384 COQ A	340526	7041195	0.00	3.00	3.00	TRC198964	0.005	TR1471 COQ A	341899	7034977	0.00	3.00	3.00	TRC197011	0.01
TR1385 COQ A	340525	7041287	0.00	1.00	1.00	TRC198965	0.08	TR1472 COQ A	341893	7035063	0.00	1.00	1.00	TRC197012	0.005
TR1386 COQ A	340472	7041319	0.00	3.00	3.00	TRC198966	0.03	TR1473 COQ A	341954	7035143	0.00	2.00	2.00	TRC197013	0.02
TR1387 COQ A	340135	7041331	0.00	3.00	3.00	TRC198967	0.005	TR1474 COQ A	341973	7035143	0.00	1.00	1.00	TRC197014	0.02
TR1388 COQ A	341637	7040604	0.00	3.00	3.00	TRC198968	0.01	TR1475 COQ A	341983	7034959	0.00	2.00	2.00	TRC197015	0.005
TR1388 COQ A	341640	7040602	3.00	5.00	2.00	TRC198970	0.01	TR1476 COQ A	341979	7034639	0.00	2.00	2.00	TRC197016	0.01
TR1389 COQ A	339946	7041061	0.00	3.00	3.00	TRC198971	0.02	TR1477 COQ B	344078	7032130	0.00	0.00	1.00	TRC198199	0.01
TR1390 COQ A	340029	7041266	0.00	3.00	3.00	TRC198972	0.05	TR1477 COQ A	345615	7029857	0.00	2.00	2.00	TRC198200	0.005
TR1391 COQ A	340047	7041359	0.00	2.00	2.00	TRC198973	0.01	TR1478 COQ A	346154	7029965	0.00	2.00	2.00	TRC198482	0.01
TR1392 COQ A	339552	7041368	0.00	3.00	3.00	TRC198974	0.005	TR1479 COQ A	346397	7029818	0.00	3.00	3.00	TRC198483	0.005
TR1393 COQ A	339630	7041293	0.00	3.00	3.00	TRC198975	0.04	TR1480 COQ A	346394	7029817	0.00	2.00	2.00	TRC198484	0.005
TR1394 COQ A	339299	7040973	0.00	3.00	3.00	TRC198976	0.005	TR1481 COQ A	346590	7029789	0.00	1.00	1.00	TRC198485	0.005
TR1395 COQ A	339283	7040961	0.00	3.00	3.00	TRC198978	0.01	TR1482 COQ A	346670	7030014	0.00	2.00	2.00	TRC198486	0.01
TR1396 COQ A	339183	7041015	0.00	3.00	3.00	TRC198979	0.01	TR1483 COQ A	346519	7030060	0.00	1.00	1.00	TRC198487	0.005
TR1397 COQ A	339192	7041038	0.00	3.00	3.00	TRC198980	0.01	TR1484 COQ A	346494	7030062	0.00	1.00	1.00	TRC198488	0.005
TR1398 COQ A	339345	7041289	0.00	2.00	2.00	TRC198981	0.01	TR1485 COQ A	346512	7030155	0.00	1.00	1.00	TRC198490	0.005
TR1399 COQ A	339383	7041489	0.00	2.00	2.00	TRC198982	0.01	TR1486 COQ A	336491	7041937	0.00	2.00	2.00	TRC198450	0.005
TR1400 COQ A	339409	7041870	0.00	3.00	3.00	TRC198983	0.01	TR1487 COQ A	336500	7042062	0.00	3.00	3.00	TRC198451	0.005
TR1401 COQ A	339419	7041891	0.00	3.00	3.00	TRC198984	0.005	TR1488 COQ A	336475	7042297	0.00	1.00	1.00	TRC198452	0.005
TR1402 COQ A	339626	7042375	0.00	3.00	3.00	TRC198986	0.01	TR1489 COQ A	336418	7042349	0.00	2.00	2.00	TRC198453	0.005
TR1403 COQ A	339099	7042006	0.00	2.00	2.00	TRC198987	0.01	TR1490 COQ A	336365	7042320	0.00	2.00	2.00	TRC198454	0.005
TR1404 COQ A	339151	7041769	0.00	2.00	2.00	TRC198988	0.05	TR1490 COQ A	336365	7042318	2.00	4.00	2.00	TRC198455	0.005
TR1405 COQ A	339041	7041694	0.00	3.00	3.00	TRC198989	0.005	TR1491 COQ A	335791	7042348	0.00	2.00	2.00	TRC198456	0.005
TR1406 COQ A	341430	7042348	0.00	2.00	2.00	TRC198990	0.01	TR1492 COQ A	336031	7040854</					

TRENCH ID	UTM E	UTM N	FROM	TO	width (m)	Sample ID	Au ppm	TRENCH ID	UTM E	UTM N	FROM	TO	width (m)	Sample ID	Au ppm
TR1519_COQ_A	341912	7032656	0.00	1.00	1.00	TRC198494	0.005	TR1581_COQ_A	340669	7039090	6.00	9.00	3.00	TRC198787	0.01
TR1520_COQ_A	341918	7032664	0.00	2.00	2.00	TRC198495	0.005	TR1581_COQ_A	340670	7039092	9.00	12.00	3.00	TRC198788	0.01
TR1521_COQ_A	341917	7032444	0.00	3.00	3.00	TRC198496	0.01	TR1581_COQ_A	340673	7039095	12.00	15.00	3.00	TRC198789	0.01
TR1522_COQ_A	341872	7032427	0.00	1.00	1.00	TRC198498	0.01	TR1581_COQ_A	340675	7039097	15.00	18.00	3.00	TRC198790	0.005
TR1523_COQ_A	341871	7032436	0.00	1.00	1.00	TRC198499	1.03	TR1581_COQ_A	340678	7039099	18.00	21.00	3.00	TRC198791	0.005
TR1524_COQ_A	341644	7032684	0.00	1.00	1.00	TRC198500	0.54	TR1581_COQ_A	340680	7039101	21.00	24.00	3.00	TRC198792	0.005
TR1525_COQ_A	341808	7033048	0.00	3.00	3.00	TRC198802	0.005	TR1582_COQ_A	340690	7039106	0.00	3.00	3.00	TRC198794	0.15
TR1526_COQ_A	341879	7033445	0.00	1.00	1.00	TRC198803	0.02	TR1582_COQ_A	340694	7039109	3.00	6.00	3.00	TRC198795	0.03
TR1527_COQ_A	341825	7032498	0.00	2.00	2.00	TRC198804	0.01	TR1582_COQ_A	340694	7039109	6.00	9.00	3.00	TRC198796	0.21
TR1528_COQ_A	341546	7033291	0.00	1.00	1.00	TRC198805	0.005	TR1582_COQ_A	340758	7039168	0.00	3.00	3.00	TRC198797	0.04
TR1529_COQ_A	341526	7033322	0.00	1.00	1.00	TRC198806	0.005	TR1582_COQ_A	340758	7039168	3.00	6.00	3.00	TRC198798	0.005
TR1530_COQ_A	341293	7032923	0.00	3.00	3.00	TRC198807	0.01	TR1582_COQ_A	340761	7039171	6.00	9.00	3.00	TRC198799	0.01
TR1531_COQ_A	341147	7032862	0.00	1.00	1.00	TRC198808	0.005	TR1582_COQ_A	340765	7039173	9.00	12.00	3.00	TRC198800	0.01
TR1532_COQ_A	340893	7032934	0.00	1.00	1.00	TRC198810	0.005	TR1582_COQ_A	340770	7039175	12.00	15.00	3.00	TRC198801	0.01
TR1533_COQ_A	341077	7033482	2.00	2.00	TRC198811	IFE		TR1583_COQ_A	340834	7039194	0.00	3.00	3.00	TRC1987203	0.005
TR1534_COQ_A	341557	7033947	0.00	1.00	1.00	TRC198812	0.03	TR1583_COQ_A	340834	7039198	3.00	6.00	3.00	TRC1987204	0.02
TR1535_COQ_A	341710	7033958	0.00	2.00	2.00	TRC198813	0.17	TR1583_COQ_A	340835	7039201	6.00	9.00	3.00	TRC1987205	0.03
TR1536_COQ_A	341425	7033899	0.00	1.00	1.00	TRC198814	0.01	TR1583_COQ_A	340839	7039198	9.00	12.00	3.00	TRC1987206	0.04
TR1537_COQ_A	341364	7033864	0.00	1.00	1.00	TRC198815	0.18	TR1584_COQ_A	341096	7039281	0.00	3.00	3.00	TRC1987207	0.005
TR1538_COQ_A	341145	7033746	0.00	2.00	2.00	TRC198816	0.005	TR1584_COQ_A	341098	7039283	3.00	6.00	3.00	TRC1987208	0.01
TR1539_COQ_A	340350	7042007	0.00	3.00	3.00	TRC198992	0.01	TR1584_COQ_A	341099	7039286	6.00	9.00	3.00	TRC1987210	0.01
TR1540_COQ_A	340504	7042188	0.00	3.00	3.00	TRC198994	0.06	TR1584_COQ_A	341100	7039289	9.00	12.00	3.00	TRC1987211	0.01
TR1541_COQ_A	340551	7041997	0.00	1.00	1.00	TRC198995	0.005	TR1584_COQ_A	341102	7039290	12.00	15.00	3.00	TRC1987212	0.01
TR1542_COQ_A	340569	7042202	0.00	2.00	2.00	TRC198996	0.01	TR1584_COQ_A	341104	7039293	15.00	18.00	3.00	TRC1987213	0.005
TR1543_COQ_A	340701	7042291	0.00	3.00	3.00	TRC198997	0.08	TR1584_COQ_A	341106	7039294	18.00	21.00	3.00	TRC1987214	0.01
TR1544_COQ_A	340578	7042404	0.00	1.00	1.00	TRC198998	0.93	TR1584_COQ_A	341108	7039296	21.00	24.00	3.00	TRC1987215	0.005
TR1545_COQ_A	340457	7042252	0.00	2.00	2.00	TRC198999	0.02	TR1584_COQ_A	341111	7039297	24.00	27.00	3.00	TRC1987216	0.005
TR1546_COQ_A	342096	7041203	0.00	3.00	3.00	TRC199000	0.01	TR1584_COQ_A	341112	7039299	27.00	30.00	3.00	TRC1987218	0.005
TR1547_COQ_A	342070	7041027	0.00	1.00	1.00	TRC198701	0.71	TR1584_COQ_A	341114	7039302	30.00	33.00	3.00	TRC1987219	0.005
TR1548_COQ_A	342068	7041043	0.00	3.00	3.00	TRC198702	0.6	TR1584_COQ_A	341115	7039305	33.00	36.00	3.00	TRC1987220	0.005
TR1549_COQ_A	342140	7041010	0.00	3.00	3.00	TRC198703	2.85	TR1584_COQ_A	341115	7039308	36.00	39.00	3.00	TRC1987221	0.005
TR1550_COQ_A	342083	7040949	0.00	2.00	2.00	TRC198704	0.63	TR1584_COQ_A	341120	7039310	39.00	42.00	3.00	TRC1987222	0.005
TR1551_COQ_A	342232	7040993	0.00	2.00	2.00	TRC198706	0.23	TR1584_COQ_A	341123	7039312	42.00	45.00	3.00	TRC1987223	0.01
TR1553_COQ_A	342280	7041172	0.00	3.00	3.00	TRC198708	0.85	TR1584_COQ_A	341125	7039313	45.00	47.00	3.00	TRC1987224	0.005
TR1554_COQ_A	342242	7041075	0.00	3.00	3.00	TRC198709	0.09	TR1584_COQ_A	341125	7039313	47.00	50.00	3.00	TRC1987226	0.01
TR1555_COQ_A	342317	7041224	0.00	2.00	2.00	TRC198710	5.01	TR1584_COQ_A	341126	7039318	50.00	53.00	3.00	TRC1987227	0.005
TR1556_COQ_A	342479	7040903	0.00	3.00	3.00	TRC198711	3.81	TR1584_COQ_A	341129	7039319	53.00	56.00	3.00	TRC1987228	0.005
TR1557_COQ_A	342646	7041059	0.00	1.00	1.00	TRC198712	5.67	TR1584_COQ_A	341131	7039321	56.00	59.00	3.00	TRC1987229	0.005
TR1558_COQ_A	342529	7041084	0.00	1.00	1.00	TRC198714	3.97	TR1584_COQ_A	341133	7039322	59.00	62.00	3.00	TRC1987230	0.005
TR1559_COQ_A	342530	7041124	0.00	2.00	2.00	TRC198715	0.46	TR1584_COQ_A	341133	7039327	62.00	65.00	3.00	TRC1987231	0.005
TR1560_COQ_A	342493	7041314	0.00	2.00	2.00	TRC198716	1.74	TR1584_COQ_A	341135	7039327	65.00	68.00	3.00	TRC1987232	0.005
TR1561_COQ_A	342397	7041338	0.00	2.00	2.00	TRC198717	0.04	TR1584_COQ_A	341134	7039329	68.00	71.00	3.00	TRC1987234	0.005
TR1562_COQ_A	342937	7041285	0.00	2.00	2.00	TRC198718	0.01	TR1584_COQ_A	341137	7039331	71.00	74.00	3.00	TRC1987235	0.005
TR1563_COQ_A	342925	7041607	0.00	1.00	1.00	TRC198719	0.005	TR1584_COQ_A	341138	7039331	74.00	77.00	3.00	TRC1987236	0.005
TR1564_COQ_A	342761	7041504	0.00	1.00	1.00	TRC198720	0.02	TR1584_COQ_A	341140	7039335	77.00	80.00	3.00	TRC1987237	0.005
TR1565_COQ_A	342252	7041593	0.00	2.00	2.00	TRC198722	0.01	TR1584_COQ_A	341143	7039337	80.00	83.00	3.00	TRC1987238	0.005
TR1566_COQ_A	342498	7041478	0.00	2.00	2.00	TRC198723	0.24	TR1584_COQ_A	341148	7039339	83.00	86.00	3.00	TRC1987239	0.005
TR1568_COQ_A	342266	7041380	0.00	1.00	1.00	TRC198725	0.06	TR1584_COQ_A	341150	7039341	86.00	89.00	3.00	TRC1987240	0.005
TR1570_COQ_A	342062	7041440	0.00	2.00	2.00	TRC198727	0.07	TR1584_COQ_A	341153	7039343	89.00	92.00	3.00	TRC1987242	0.005
TR1571_COQ_A	340887	7035884	0.00	1.00	1.00	TRC198728	1.31	TR1584_COQ_A	341150	7039342	92.00	95.00	3.00	TRC1987243	0.005
TR1572_COQ_A	340600	7036127	0.00	1.00	1.00	TRC198730	2.47	TR1585_COQ_A	342082	7038042	0.00	3.00	3.00	TRC1986203	0.03
TR1573_COQ_A	339654	7037181	0.00	1.00	1.00	TRC198731	0.005	TR1585_COQ_A	342080	7038045	3.00	6.00	3.00	TRC1986201	0.01
TR1574_COQ_A	340535	7038954	0.00	3.00	3.00	TRC198732	0.005	TR1585_COQ_A	341972	7038201	0.00	3.00	3.00	TRC1986204	0.02
TR1574_COQ_A	340538	7038955	3.00	6.00	3.00	TRC198733	0.005	TR1585_COQ_A	341970	7038200	3.00	6.00	3.00	TRC1986205	0.01
TR1574_COQ_A	340541	7038957	6.00	9.00	3.00	TRC198734	0.005	TR1586_COQ_A	341967	7038199	6.00	9.00	3.00	TRC1986206	0.005
TR1574_COQ_A	340542	7038960	9.00	12.00	3.00	TRC198735	0.005	TR1586_COQ_A	341966	7038198	9.00	12.00	3.00	TRC1986207	0.005
TR1574_COQ_A	340543	7038961	12.00	15.00	3.00	TRC198736	0.005	TR1586_COQ_A	341965	7038195	12.00	15.00	3.00	TRC1986208	0.02
TR1574_COQ_A	340549	7038964	15.00	18.00	3.00	TRC198738	0.005	TR1586_COQ_A	341963	7038193	15.00	18.00	3.00	TRC1986210	0.01
TR1575_COQ_A	340564	7038972	0.00	3.00	3.00	TRC198739	0.005	TR1586_COQ_A	341961	7038191	18.00	21.00	3.00	TRC1986211	0.005
TR1575_COQ_A	340565	7038975	3.00	6.00	3.00	TRC198740	0.01	TR1586_COQ_A	341959	7038187	21.00	24.00	3.00	TRC1986212	0.005
TR1575_COQ_A	340570	7038977	6.00	9.00	3.00	TRC198741	0.005	TR1586_COQ_A	341958	7038185	24.00	27.00	3.00	TRC1986213	0.01
TR1575_COQ_A	340572	7038979	9.00	12.00	3.00	TRC198742	0.005	TR1586_COQ_A	341957	7038183	27.00	30.00	3.00	TRC1986214	0.02
TR1575_COQ_A	340575	7038981	12.00	15.00	3.00	TRC198743	0.005	TR1586_COQ_A	341956	7038181	30.00	33.00	3.00	TRC1986215	0.02
TR1575_COQ_A	340576	7038985	15.00	18.00	3.00	TRC198744	0.01	TR1586_COQ_A	341954	7038178	33.00	36.00	3.00	TRC1986216	0.02
TR1575_COQ_A	340577	7038985	18.00	21.00	3.00	TRC198746	0.03	TR1587_COQ_A	341930	7038168	0.00	3.00	3.00	TRC198618	0.01
TR1576_COQ_A	340584	7038991	0.00	3.00	3.00	TRC198747	0.005	TR1587_COQ_A	341926	7038169	3.00	6.00	3.00	TRC198619	0.01
TR1576_COQ_A	340584	7038992	3.00	6.00	3.00	TRC198748	0.005	TR1587_COQ_A	341923	7038169	6.00	9.00	3.00	TRC198620	0.01
TR1576_COQ_A	340590	7038993	6.00	9.00	3.00	TRC198749	0.005	TR1588_COQ_A	341871	7038180	0.00	3.00	3.00	TRC198621	0.005
TR1576_COQ_A	340589	7038995	9.00	12.0											

TRENCH_ID	UTM_E	UTM_N	FROM	TO	width (m)	Sample ID	Au ppm	TRENCH_ID	UTM_E	UTM_N	FROM	TO	width (m)	Sample ID	Au ppm
TR1597 COQ A	341708	7038711	27.00	30.00	3.00	TRC198659	0.005	TR1619 COQ A	340739	7038961	9.00	12.00	3.00	TRC197920	0.01
TR1597 COQ A	341710	7038710	30.00	33.00	3.00	TRC198660	0.02	TR1619 COQ A	340741	7038963	12.00	15.00	3.00	TRC197922	0.005
TR1597 COQ A	341708	7038712	33.00	36.00	3.00	TRC198661	0.005	TR1619 COQ A	340744	7038964	15.00	18.00	3.00	TRC197923	0.005
TR1597 COQ A	341706	7038719	36.00	39.00	3.00	TRC198662	0.005	TR1619 COQ A	340746	7038966	18.00	21.00	3.00	TRC197924	0.005
TR1597 COQ A	341702	7038721	39.00	42.00	3.00	TRC198663	0.005	TR1619 COQ A	340749	7038967	21.00	24.00	3.00	TRC197925	0.005
TR1597 COQ A	341703	7038721	42.00	45.00	3.00	TRC198664	0.005	TR1619 COQ A	340751	7038969	24.00	27.00	3.00	TRC197926	0.005
TR1597 COQ A	341700	7038726	45.00	48.00	3.00	TRC198666	0.01	TR1619 COQ A	340754	7038970	27.00	30.00	3.00	TRC197927	0.005
TR1597 COQ A	341698	7038724	48.00	51.00	3.00	TRC198667	0.005	TR1619 COQ A	340756	7038972	30.00	33.00	3.00	TRC197928	0.005
TR1597 COQ A	341696	7038730	51.00	54.00	3.00	TRC198668	0.11	TR1619 COQ A	340759	7038973	33.00	36.00	3.00	TRC197930	0.005
TR1597 COQ A	341697	7038734	54.00	57.00	3.00	TRC198669	0.03	TR1619 COQ A	340761	7038975	36.00	39.00	3.00	TRC197931	0.005
TR1597 COQ A	341704	7038735	57.00	60.00	3.00	TRC198670	0.02	TR1619 COQ A	340764	7038976	39.00	42.00	3.00	TRC197932	0.005
TR1597 COQ A	341701	7038738	60.00	63.00	3.00	TRC198671	0.02	TR1619 COQ A	340766	7038978	42.00	45.00	3.00	TRC197933	0.005
TR1597 COQ A	341699	7038740	63.00	66.00	3.00	TRC198672	0.01	TR1619 COQ A	340769	7038979	45.00	48.00	3.00	TRC197934	0.005
TR1597 COQ A	341697	7038743	66.00	69.00	3.00	TRC198674	0.005	TR1620 COQ A	340771	7038980	0.00	3.00	3.00	TRC197935	0.005
TR1597 COQ A	341697	7038744	69.00	72.00	3.00	TRC198675	0.005	TR1620 COQ A	340774	7038981	3.00	6.00	3.00	TRC197936	0.005
TR1597 COQ A	341691	7038749	72.00	75.00	3.00	TRC198676	0.01	TR1620 COQ A	340776	7038982	6.00	9.00	3.00	TRC197938	0.005
TR1597 COQ A	341690	7038753	75.00	78.00	3.00	TRC198677	0.005	TR1620 COQ A	340779	7038983	9.00	12.00	3.00	TRC197939	0.005
TR1597 COQ A	341691	7038755	78.00	81.00	3.00	TRC198678	0.005	TR1620 COQ A	340781	7038983	12.00	15.00	3.00	TRC197940	0.005
TR1597 COQ A	341691	7038757	81.00	84.00	3.00	TRC198679	0.005	TR1620 COQ A	340784	7038984	15.00	18.00	3.00	TRC197941	0.005
TR1597 COQ A	341694	7038758	84.00	87.00	3.00	TRC198680	0.005	TR1620 COQ A	340786	7038985	18.00	21.00	3.00	TRC197942	0.005
TR1598 COQ A	344726	7029855	0.00	3.00	3.00	TRC197028	0.005	TR1620 COQ A	340789	7038986	21.00	24.00	3.00	TRC197943	0.005
TR1599 COQ A	344541	7030333	0.00	1.00	1.00	TRC197029	0.005	TR1621 COQ A	341310	7039341	0.00	3.00	3.00	TRC197944	0.005
TR1600 COQ A	344492	7030292	0.00	2.00	2.00	TRC197030	0.005	TR1621 COQ A	341312	7039342	3.00	6.00	3.00	TRC197946	0.005
TR1601 COQ A	344426	7030474	0.00	1.00	1.00	TRC197031	0.005	TR1621 COQ A	341314	7039344	6.00	9.00	3.00	TRC197947	0.005
TR1602 COQ A	344546	7030851	0.00	2.00	2.00	TRC197032	0.005	TR1621 COQ A	341316	7039346	9.00	12.00	3.00	TRC197948	0.005
TR1603 COQ A	344709	7030550	0.00	1.00	1.00	TRC197034	0.01	TR1621 COQ A	341318	7039347	12.00	15.00	3.00	TRC197949	0.005
TR1603 COQ A	344708	7030549	1.00	2.00	1.00	TRC197035	0.005	TR1621 COQ A	341320	7039349	15.00	18.00	3.00	TRC197950	0.005
TR1604 COQ A	344185	7030436	0.00	1.00	1.00	TRC197036	0.005	TR1621 COQ A	341323	7039351	18.00	21.00	3.00	TRC197951	0.005
TR1605 COQ A	344078	7030515	0.00	3.00	3.00	TRC197037	0.02	TR1621 COQ A	341325	7039352	21.00	24.00	3.00	TRC197952	0.005
TR1606 COQ A	343961	7030520	0.00	3.00	3.00	TRC197038	0.005	TR1621 COQ A	341327	7039354	24.00	27.00	3.00	TRC197954	0.005
TR1607 COQ A	343932	7030744	0.00	1.00	1.00	TRC197039	0.01	TR1621 COQ A	341329	7039355	27.00	30.00	3.00	TRC197955	0.005
TR1608 COQ A	343996	7031061	0.00	1.00	1.00	TRC197040	0.16	TR1621 COQ A	341331	7039357	30.00	33.00	3.00	TRC197956	0.005
TR1609 COQ A	343974	7031091	0.00	1.00	1.00	TRC197042	0.01	TR1621 COQ A	341333	7039359	33.00	36.00	3.00	TRC197957	0.005
TR1610 COQ A	343957	7031153	0.00	1.00	1.00	TRC197043	0.17	TR1621 COQ A	341335	7039360	36.00	39.00	3.00	TRC197958	0.01
TR1611 COQ A	343474	7031459	0.00	2.00	2.00	TRC197044	0.005	TR1622 COQ A	341400	7039376	0.00	3.00	3.00	TRC197959	0.005
TR1612 COQ A	343869	7031406	0.00	3.00	3.00	TRC197045	0.005	TR1622 COQ A	341403	7039378	3.00	6.00	3.00	TRC197960	0.005
TR1612 COQ A	343871	7031408	3.00	6.00	3.00	TRC197046	0.005	TR1622 COQ A	341406	7039379	6.00	9.00	3.00	TRC197962	0.01
TR1613 COQ A	343855	7031424	0.00	2.00	2.00	TRC197047	0.005	TR1622 COQ A	341408	7039381	9.00	12.00	3.00	TRC197963	0.005
TR1613 COQ A	343857	7031426	2.00	4.00	2.00	TRC197048	0.005	TR1622 COQ A	341411	7039383	12.00	15.00	3.00	TRC197964	0.005
TR1614 COQ A	340604	7038872	0.00	3.00	3.00	TRC197050	0.005	TR1622 COQ A	341414	7039384	15.00	18.00	3.00	TRC197965	0.005
TR1614 COQ A	340637	7038900	3.00	6.00	3.00	TRC197051	0.005	TR1622 COQ A	341416	7039386	18.00	21.00	3.00	TRC197966	0.01
TR1614 COQ A	340677	7038920	6.00	9.00	3.00	TRC197052	0.005	TR1622 COQ A	341419	7039388	21.00	24.00	3.00	TRC197967	0.01
TR1614 COQ A	340606	7038874	9.00	12.00	3.00	TRC197053	0.005	TR1622 COQ A	341422	7039389	24.00	27.00	3.00	TRC197968	0.005
TR1614 COQ A	340608	7038875	12.00	15.00	3.00	TRC197054	0.005	TR1622 COQ A	341425	7039391	27.00	30.00	3.00	TRC197970	0.01
TR1614 COQ A	340610	7038877	15.00	18.00	3.00	TRC197055	0.005	TR1622 COQ A	341427	7039393	30.00	33.00	3.00	TRC197971	0.005
TR1614 COQ A	340612	7038879	18.00	21.00	3.00	TRC197056	0.005	TR1622 COQ A	341430	7039394	33.00	36.00	3.00	TRC197972	0.005
TR1614 COQ A	340614	7038881	21.00	24.00	3.00	TRC197058	0.005	TR1622 COQ A	341433	7039396	36.00	39.00	3.00	TRC197973	0.005
TR1614 COQ A	340616	7038882	24.00	27.00	3.00	TRC197059	0.005	TR1622 COQ A	341435	7039398	39.00	42.00	3.00	TRC197974	0.005
TR1614 COQ A	340618	7038884	27.00	30.00	3.00	TRC197060	0.005	TR1622 COQ A	341438	7039399	42.00	45.00	3.00	TRC197975	0.005
TR1614 COQ A	340621	7038886	30.00	33.00	3.00	TRC197061	0.005	TR1622 COQ A	341441	7039401	45.00	48.00	3.00	TRC197976	0.005
TR1614 COQ A	340623	7038888	33.00	36.00	3.00	TRC197062	0.005	TR1623 COQ A	341443	7039403	0.00	3.00	3.00	TRC197978	0.005
TR1614 COQ A	340625	7038889	36.00	39.00	3.00	TRC197063	0.005	TR1623 COQ A	341445	7039404	3.00	6.00	3.00	TRC197979	0.005
TR1614 COQ A	340627	7038891	39.00	42.00	3.00	TRC197064	0.005	TR1623 COQ A	341448	7039405	6.00	9.00	3.00	TRC197980	0.005
TR1614 COQ A	340629	7038893	42.00	45.00	3.00	TRC197066	0.01	TR1623 COQ A	341450	7039406	9.00	12.00	3.00	TRC197981	0.005
TR1614 COQ A	340631	7038895	45.00	48.00	3.00	TRC197067	0.005	TR1623 COQ A	341452	7039407	12.00	15.00	3.00	TRC197982	0.005
TR1615 COQ A	340633	7038896	48.00	51.00	3.00	TRC197068	0.005	TR1623 COQ A	341455	7039408	15.00	18.00	3.00	TRC197983	0.005
TR1615 COQ A	340635	7038898	51.00	54.00	3.00	TRC197069	0.005	TR1623 COQ A	341457	7039409	18.00	21.00	3.00	TRC197984	0.005
TR1615 COQ A	340640	7038901	6.00	9.00	3.00	TRC197070	0.005	TR1623 COQ A	341459	7039410	21.00	24.00	3.00	TRC197986	0.005
TR1615 COQ A	340642	7038902	9.00	12.00	3.00	TRC197071	0.005	TR1623 COQ A	341462	7039411	24.00	27.00	3.00	TRC197987	0.01
TR1615 COQ A	340645	7038903	12.00	15.00	3.00	TRC197072	0.005	TR1623 COQ A	341464	7039412	27.00	30.00	3.00	TRC197988	0.005
TR1615 COQ A	340647	7038905	15.00	18.00	3.00	TRC197074	0.005	TR1623 COQ A	341466	7039413	30.00	33.00	3.00	TRC197989	0.01
TR1615 COQ A	340650	7038906	18.00	21.00	3.00	TRC197075	0.01	TR1623 COQ A	341469	7039414	33.00	36.00	3.00	TRC197990	0.005
TR1615 COQ A	340652	7038907	21.00	24.00	3.00	TRC197076	0.005	TR1623 COQ A	341471	7039415	36.00	39.00	3.00	TRC197991	0.005
TR1615 COQ A	340655	7038908	24.00	27.00	3.00	TRC197077	0.005	TR1624 COQ A	341491	7039431	0.00	3.00	3.00	TRC197992	0.005
TR1615 COQ A	340657	7038910	27.00	30.00	3.00	TRC197078	0.005	TR1624 COQ A	341494	7039433	3.00	6.00	3.00	TRC197994	0.01
TR1615 COQ A	340660	7038911	30.00	33.00	3.00	TRC197079	0.01	TR1624 COQ A	341553	7039459	0.00	3.00	3.00	TRC197995	0.005
TR1615 COQ A	340662	7038912	33.00	36.00	3.00	TRC197080	0.005	TR1624 COQ A	341556	7039460	3.00	6.00	3.00	TRC197996	0.005
TR1615 COQ A	340665	7038913	36.00	39.00	3.00	TRC197082	0.005	TR1624 COQ A	341559	7039462	6.00				

TR1627_COQ_A	342409	7040929	24.00	27.00	3.00	TRC196134	0.005	TR1655_COQ_A	344600	7034918	0.00	1.00	1.00	TRC196216	0.01
TR1627_COQ_A	342411	7040930	27.00	30.00	3.00	TRC196135	0.005	TR1656_COQ_A	343617	7036063	0.00	1.00	1.00	TRC196218	0.01
TR1627_COQ_A	342413	7040931	30.00	33.00	3.00	TRC196136	0.005	TR1657_COQ_A	352288	7026589	0.00	1.00	1.00	TRC198691	0.005
TR1627_COQ_A	342415	7040932	33.00	36.00	3.00	TRC196138	0.01	TR1658_COQ_A	351156	7025529	0.00	1.00	1.00	TRC198692	0.02
TR1627_COQ_A	342417	7040934	36.00	39.00	3.00	TRC196139	0.005	TR1659_COQ_A	351630	7025725	0.00	1.00	1.00	TRC198693	0.03
TR1627_COQ_A	342419	7040935	39.00	42.00	3.00	TRC196140	0.005	TR1660_COQ_A	346615	7028311	0.00	1.00	1.00	TRC198694	0.01
TR1627_COQ_A	342421	7040936	42.00	45.00	3.00	TRC196141	0.005	TR1661_COQ_A	346627	7028294	0.00	3.00	3.00	TRC198695	0.01
TR1627_COQ_A	342423	7040937	45.00	48.00	3.00	TRC196142	0.005	TR1662_COQ_A	346617	7028284	0.00	2.00	2.00	TRC198696	0.01
TR1628_COQ_A	342451	7040960	0.00	3.00	3.00	TRC196143	0.005	TR1663_COQ_A	346906	7027347	0.00	2.00	2.00	TRC198698	0.005
TR1628_COQ_A	342452	7040961	3.00	6.00	3.00	TRC196144	0.005	TR1664_COQ_A	345357	7029730	0.00	2.00	2.00	TRC198699	0.005
TR1629_COQ_A	342468	7040972	0.00	3.00	3.00	TRC196146	4.58	TR1665_COQ_A	345795	7029296	0.00	3.00	3.00	TRC198700	0.005
TR1629_COQ_A	342471	7040971	3.00	6.00	3.00	TRC196147	0.01	TR1666_COQ_A	345208	7029532	0.00	3.00	3.00	TRC197101	0.01
TR1629_COQ_A	342473	7040970	6.00	9.00	3.00	TRC196148	0.005	TR1667_COQ_A	344852	7031512	0.00	3.00	3.00	TRC197102	1.17
TR1630_COQ_A	342483	7040981	0.00	3.00	3.00	TRC196149	0.005	TR1668_COQ_A	344941	7031147	0.00	3.00	3.00	TRC197103	0.04
TR1630_COQ_A	342485	7040982	3.00	6.00	3.00	TRC196150	0.005	TR1669_COQ_A	344925	7031056	0.00	3.00	3.00	TRC197104	0.01
TR1630_COQ_A	342486	7040983	6.00	9.00	3.00	TRC196151	0.005	TR1670_COQ_A	345174	7029804	0.00	3.00	3.00	TRC197106	0.005
TR1630_COQ_A	342488	7040985	9.00	12.00	3.00	TRC196152	0.005	TR1671_COQ_A	345095	7029879	0.00	2.00	2.00	TRC197107	0.005
TR1630_COQ_A	342490	7040986	12.00	15.00	3.00	TRC196154	0.005	TR1672_COQ_A	343907	7032065	0.00	2.00	2.00	TRC197108	0.005
TR1630_COQ_A	342491	7040987	15.00	18.00	3.00	TRC196155	0.005	TR1673_COQ_A	343908	7032069	0.00	3.00	3.00	TRC197109	0.01
TR1630_COQ_A	342493	7040989	18.00	21.00	3.00	TRC196156	0.005	TR1674_COQ_A	343290	7031928	0.00	3.00	3.00	TRC197110	0.01
TR1630_COQ_A	342495	7040990	21.00	24.00	3.00	TRC196157	0.005	TR1675_COQ_A	342174	7033144	0.00	2.00	2.00	TRC197111	0.005
TR1630_COQ_A	342496	7040991	24.00	27.00	3.00	TRC196158	0.005	TR1676_COQ_A	342217	7033246	0.00	3.00	3.00	TRC197112	0.01
TR1631_COQ_A	342526	7041017	0.00	3.00	3.00	TRC196159	0.005	TR1677_COQ_A	341536	7034213	0.00	3.00	3.00	TRC197114	0.19
TR1631_COQ_A	342528	7041018	3.00	6.00	3.00	TRC196160	0.005	TR1678_COQ_A	341548	7034310	0.00	3.00	3.00	TRC197115	1.26
TR1631_COQ_A	342530	7041020	6.00	9.00	3.00	TRC196162	0.005	TR1679_COQ_A	346549	7027931	0.00	3.00	3.00	TRC197116	0.005
TR1631_COQ_A	342532	7041021	9.00	12.00	3.00	TRC196163	0.005	TR1680_COQ_A	346541	7027927	0.00	3.00	3.00	TRC197117	0.01
TR1632_COQ_A	342561	7041005	0.00	3.00	3.00	TRC196164	0.005	TR1681_COQ_A	345241	7031321	0.00	1.00	1.00	TRC197119	0.01
TR1632_COQ_A	342563	7041006	3.00	6.00	3.00	TRC196165	0.005	TR1682_COQ_A	345152	7031270	0.00	1.00	1.00	TRC197120	0.01
TR1632_COQ_A	342564	7041007	6.00	9.00	3.00	TRC196166	0.005	TR1683_COQ_A	344860	7032156	0.00	1.00	1.00	TRC197122	0.01
TR1632_COQ_A	342566	7041008	9.00	12.00	3.00	TRC196167	0.005	TR1684_COQ_A	345124	7031910	0.00	1.00	1.00	TRC197123	0.01
TR1633_COQ_A	342492	7041487	0.00	3.00	3.00	TRC196168	0.005	TR1685_COQ_A	345727	7031225	0.00	1.00	1.00	TRC197124	0.02
TR1633_COQ_A	342490	7041486	3.00	6.00	3.00	TRC196170	0.005	TR1686_COQ_A	345450	7030859	0.00	1.00	1.00	TRC197125	0.005
TR1633_COQ_A	342488	7041484	6.00	9.00	3.00	TRC196171	0.005	TR1687_COQ_A	345380	7030852	0.00	1.00	1.00	TRC197126	0.005
TR1633_COQ_A	342486	7041483	9.00	12.00	3.00	TRC196172	0.01	TR1688_COQ_A	345662	7030751	0.00	2.00	2.00	TRC197127	0.01
TR1633_COQ_A	342484	7041481	12.00	15.00	3.00	TRC196173	0.005	TR1689_COQ_A	346011	7030604	0.00	3.00	3.00	TRC197128	0.01
TR1633_COQ_A	342482	7041480	15.00	18.00	3.00	TRC196174	0.005	TR1690_COQ_A	340903	7038523	0.00	3.00	3.00	TRC197130	0.02
TR1633_COQ_A	342479	7041478	18.00	21.00	3.00	TRC196175	0.005	TR1690_COQ_A	340905	7038527	3.00	6.00	3.00	TRC197131	0.02
TR1633_COQ_A	342477	7041476	21.00	24.00	3.00	TRC196176	0.005	TR1690_COQ_A	340906	7038530	6.00	9.00	3.00	TRC197132	0.01
TR1633_COQ_A	342475	7041475	24.00	27.00	3.00	TRC196178	0.01	TR1690_COQ_A	340909	7038532	9.00	12.00	3.00	TRC197133	0.01
TR1633_COQ_A	342473	7041473	27.00	30.00	3.00	TRC196179	0.005	TR1690_COQ_A	340911	7038535	12.00	15.00	3.00	TRC197134	0.03
TR1633_COQ_A	342471	7041472	30.00	33.00	3.00	TRC196180	0.005	TR1690_COQ_A	340912	7038538	15.00	18.00	3.00	TRC197135	0.05
TR1634_COQ_A	342403	7041417	0.00	3.00	3.00	TRC196181	0.005	TR1690_COQ_A	340914	7038547	18.00	21.00	3.00	TRC197136	0.01
TR1634_COQ_A	342400	7041416	3.00	6.00	3.00	TRC196182	0.005	TR1690_COQ_A	340917	7038548	21.00	24.00	3.00	TRC197138	0.005
TR1634_COQ_A	342398	7041414	6.00	9.00	3.00	TRC196183	0.005	TR1690_COQ_A	340920	7038551	24.00	27.00	3.00	TRC197139	0.01
TR1634_COQ_A	342395	7041413	9.00	12.00	3.00	TRC196184	0.005	TR1690_COQ_A	340921	7038553	27.00	30.00	3.00	TRC197140	0.005
TR1634_COQ_A	342393	7041411	12.00	15.00	3.00	TRC196186	0.03	TR1691_COQ_A	341172	7038721	0.00	3.00	3.00	TRC197141	0.01
TR1634_COQ_A	342390	7041410	15.00	18.00	3.00	TRC196187	0.01	TR1691_COQ_A	341181	7038723	3.00	6.00	3.00	TRC197142	0.01
TR1634_COQ_A	342388	7041408	18.00	21.00	3.00	TRC196188	0.005	TR1691_COQ_A	341185	7038724	6.00	9.00	3.00	TRC197143	0.01
TR1634_COQ_A	342385	7041407	21.00	24.00	3.00	TRC196189	0.005	TR1691_COQ_A	341188	7038726	9.00	12.00	3.00	TRC197144	0.05
TR1634_COQ_A	342382	7041406	24.00	27.00	3.00	TRC196190	0.005	TR1691_COQ_A	341192	7038728	12.00	15.00	3.00	TRC197146	0.04
TR1634_COQ_A	342380	7041404	27.00	30.00	3.00	TRC196191	0.005	TR1691_COQ_A	341194	7038730	15.00	18.00	3.00	TRC197147	0.005
TR1634_COQ_A	342377	7041403	30.00	33.00	3.00	TRC196192	0.005	TR1691_COQ_A	341197	7038732	18.00	21.00	3.00	TRC197148	0.05
TR1634_COQ_A	342375	7041401	33.00	36.00	3.00	TRC196194	0.005	TR1691_COQ_A	341199	7038734	21.00	24.00	3.00	TRC197149	0.01
TR1634_COQ_A	342372	7041400	36.00	39.00	3.00	TRC196195	0.005	TR1691_COQ_A	341201	7038734	24.00	27.00	3.00	TRC197150	0.02
TR1634_COQ_A	342370	7041398	39.00	42.00	3.00	TRC196196	0.005	TR1691_COQ_A	341202	7038735	27.00	30.00	3.00	TRC197151	0.01
TR1634_COQ_A	342367	7041397	42.00	45.00	3.00	TRC196197	0.03	TR1691_COQ_A	341203	7038739	30.00	33.00	3.00	TRC197152	0.01
TR1635_COQ_A	342349	7041359	0.00	3.00	3.00	TRC196198	0.005	TR1691_COQ_A	341207	7038741	33.00	36.00	3.00	TRC197154	0.01
TR1635_COQ_A	342347	7041357	3.00	6.00	3.00	TRC196199	0.005	TR1692_COQ_A	341285	7038781	3.00	6.00	3.00	TRC197156	0.02
TR1635_COQ_A	342345	7041355	6.00	9.00	3.00	TRC196200	0.005	TR1692_COQ_A	341283	7038781	6.00	9.00	3.00	TRC197157	0.02
TR1635_COQ_A	342342	7041354	9.00	12.00	3.00	TRC197418	0.005	TR1692_COQ_A	341278	7038780	9.00	12.00	3.00	TRC197158	0.04
TR1635_COQ_A	342340	7041352	12.00	15.00	3.00	TRC197419	0.005	TR1692_COQ_A	341278	7038778	12.00	15.00	3.00	TRC197159	0.02
TR1635_COQ_A	342338	7041350	15.00	18.00	3.00	TRC197420	0.005	TR1692_COQ_A	341277	7038777	15.00	18.00	3.00	TRC197160	0.02
TR1636_COQ_A	342079	7041535	3.00	6.00	3.00	TRC197422	0.09	TR1692_COQ_A	341275	7038775	18.00	21.00	3.00	TRC197162	0.01
TR1636_COQ_A	342075	7041524	18.00	21.00	3.00	TRC197428	0.04	TR1692_COQ_A	341274	7038774	21.00	24.00	3.00	TRC197163	0.01
TR1636_COQ_A	342074	7041521	21.00	24.00	3.00	TRC197429	0.01	TR1692_COQ_A	341258	7038776	24.00	27.00	3.00	TRC197164	0.04
TR1637_COQ_A	342068	7041521	3.00	6.00	3.00	TRC197431	0.09	TR1692_COQ_A	341256	7038774	27.00	30.00	3.00	TRC197165	0.02
TR1637_COQ_A	342066	7041516	6.00	12.00	3.00	TRC197434	0.03	TR1692_COQ_A	341255	7038771	30.00	33.00	3.00	TRC197166	0.02
TR1637_COQ_A	342065	7041514	12.00	15.00	3.00	TRC197435	0.01	TR1692_COQ_A	341241	7038769	33.00	36.00	3.00	TRC197167	0.02
TR1638_COQ_A	342064	7041512	0.00	3.00	3.00	TRC197436	0.01	TR1692_COQ_A	341241	7038765	36.00	39.00	3.00	TRC197168	0.02
TR1638_COQ_A	342062														

TRENCH ID	UTM E	UTM N	FROM	TO	width (m)	Sample ID	Au ppm	TRENCH ID	UTM E	UTM N	FROM	TO	width (m)	Sample ID	Au ppm
TR1697_COQ_A	341296	7038826	3.00	6.00	3.00	TRC197712	0.04	TR1717_COQ_A	340690	7038724	21.00	24.00	3.00	TRC197630	0.005
TR1697_COQ_A	341298	7038827	6.00	9.00	3.00	TRC197714	0.01	TR1717_COQ_A	340689	7038724	24.00	27.00	3.00	TRC197631	0.005
TR1697_COQ_A	341299	7038830	9.00	12.00	3.00	TRC197715	0.01	TR1717_COQ_A	340691	7038728	27.00	30.00	3.00	TRC197632	0.005
TR1697_COQ_A	341299	7038830	12.00	15.00	3.00	TRC197716	0.03	TR1717_COQ_A	340695	7038729	30.00	33.00	3.00	TRC197634	0.005
TR1698_COQ_A	341307	7038834	0.00	3.00	3.00	TRC197717	0.03	TR1717_COQ_A	340697	7038731	33.00	36.00	3.00	TRC197635	0.005
TR1699_COQ_A	341271	7038813	0.00	3.00	3.00	TRC197718	0.01	TR1717_COQ_A	340698	7038734	36.00	39.00	3.00	TRC197636	0.04
TR1699_COQ_A	341272	7038813	3.00	6.00	3.00	TRC197719	0.01	TR1717_COQ_A	340699	7038734	39.00	42.00	3.00	TRC197637	0.005
TR1699_COQ_A	341276	7038815	6.00	9.00	3.00	TRC197720	0.04	TR1717_COQ_A	340699	7038739	42.00	45.00	3.00	TRC197638	0.005
TR1699_COQ_A	341278	7038815	9.00	12.00	3.00	TRC197722	0.03	TR1717_COQ_A	340699	7038739	45.00	48.00	3.00	TRC197639	0.005
TR1699_COQ_A	341282	7038816	12.00	15.00	3.00	TRC197723	0.07	TR1717_COQ_A	340703	7038738	48.00	51.00	3.00	TRC197640	0.005
TR1699_COQ_A	341281	7038817	15.00	18.00	3.00	TRC197724	0.04	TR1717_COQ_A	340705	7038743	51.00	54.00	3.00	TRC197642	0.01
TR1699_COQ_A	341284	7038816	18.00	21.00	3.00	TRC197725	0.08	TR1717_COQ_A	340707	7038744	54.00	57.00	3.00	TRC197643	0.005
TR1699_COQ_A	341288	7038817	21.00	24.00	3.00	TRC197726	0.07	TR1717_COQ_A	340708	7038747	57.00	60.00	3.00	TRC197644	0.005
TR1700_COQ_A	341368	7038857	0.00	3.00	3.00	TRC197728	0.02	TR1717_COQ_A	340711	7038750	60.00	63.00	3.00	TRC197645	0.005
TR1700_COQ_A	341370	7038857	3.00	6.00	3.00	TRC197730	0.02	TR1717_COQ_A	340712	7038751	63.00	66.00	3.00	TRC197646	0.005
TR1700_COQ_A	341372	7038859	6.00	9.00	3.00	TRC197731	0.03	TR1717_COQ_A	340713	7038753	66.00	69.00	3.00	TRC197647	0.09
TR1700_COQ_A	341374	7038860	9.00	12.00	3.00	TRC197732	0.02	TR1717_COQ_A	340715	7038755	69.00	72.00	3.00	TRC197648	0.005
TR1701_COQ_A	341330	7038874	0.00	3.00	3.00	TRC197733	0.01	TR1717_COQ_A	340717	7038757	72.00	75.00	3.00	TRC197650	0.005
TR1701_COQ_A	341333	7038879	3.00	6.00	3.00	TRC197734	0.01	TR1718_COQ_A	340716	7038761	0.00	3.00	3.00	TRC197651	0.005
TR1701_COQ_A	341334	7038880	6.00	9.00	3.00	TRC197735	0.01	TR1718_COQ_A	340717	7038762	3.00	6.00	3.00	TRC197652	0.01
TR1701_COQ_A	341336	7038881	9.00	12.00	3.00	TRC197736	0.01	TR1718_COQ_A	340720	7038764	6.00	9.00	3.00	TRC197653	0.005
TR1702_COQ_A	341360	7038881	0.00	3.00	3.00	TRC197738	0.02	TR1718_COQ_A	340723	7038765	9.00	12.00	3.00	TRC197654	0.005
TR1702_COQ_A	341355	7038884	3.00	6.00	3.00	TRC197739	0.05	TR1718_COQ_A	340725	7038766	12.00	15.00	3.00	TRC197655	0.01
TR1702_COQ_A	341358	7038884	6.00	9.00	3.00	TRC197740	0.1	TR1719_COQ_A	340734	7038765	0.00	3.00	3.00	TRC197656	0.005
TR1703_COQ_A	341011	7038486	0.00	3.00	3.00	TRC197741	0.01	TR1719_COQ_A	340737	7038766	3.00	6.00	3.00	TRC197658	0.02
TR1703_COQ_A	341013	7038487	3.00	6.00	3.00	TRC197742	0.04	TR1719_COQ_A	340740	7038766	6.00	9.00	3.00	TRC197659	0.07
TR1703_COQ_A	341009	7038484	6.00	9.00	3.00	TRC197743	0.01	TR1719_COQ_A	340742	7038765	9.00	12.00	3.00	TRC197660	0.06
TR1703_COQ_A	341008	7038483	9.00	12.00	3.00	TRC197744	0.005	TR1719_COQ_A	340745	7038767	12.00	15.00	3.00	TRC197661	0.03
TR1703_COQ_A	341005	7038480	12.00	15.00	3.00	TRC197746	0.01	TR1719_COQ_A	340746	7038771	15.00	18.00	3.00	TRC197662	0.02
TR1703_COQ_A	341003	7038479	15.00	18.00	3.00	TRC197747	0.01	TR1719_COQ_A	340749	7038771	18.00	21.00	3.00	TRC197663	0.07
TR1703_COQ_A	341002	7038477	18.00	21.00	3.00	TRC197748	0.01	TR1719_COQ_A	340753	7038775	21.00	24.00	3.00	TRC197664	0.05
TR1703_COQ_A	340999	7038475	21.00	24.00	3.00	TRC197749	0.005	TR1719_COQ_A	340757	7038772	24.00	27.00	3.00	TRC197666	0.02
TR1703_COQ_A	340998	7038473	24.00	27.00	3.00	TRC197750	0.005	TR1719_COQ_A	340757	7038773	27.00	30.00	3.00	TRC197667	0.005
TR1703_COQ_A	340996	7038472	27.00	30.00	3.00	TRC197751	0.01	TR1720_COQ_A	340919	7038844	0.00	3.00	3.00	TRC197668	0.005
TR1703_COQ_A	340992	7038470	30.00	33.00	3.00	TRC197752	0.01	TR1720_COQ_A	340922	7038847	3.00	6.00	3.00	TRC197669	0.005
TR1703_COQ_A	340992	7038469	33.00	36.00	3.00	TRC197754	0.01	TR1720_COQ_A	340924	7038846	6.00	9.00	3.00	TRC197670	0.005
TR1704_COQ_A	341434	7034379	0.00	1.00	1.00	TRC198855	0.43	TR1721_COQ_A	340956	7038867	0.00	3.00	3.00	TRC197671	0.005
TR1705_COQ_A	341192	7034668	0.00	2.00	2.00	TRC198856	1.53	TR1721_COQ_A	340959	7038870	3.00	6.00	3.00	TRC197672	0.005
TR1706_COQ_A	339300	7034837	0.00	1.00	1.00	TRC198858	0.01	TR1721_COQ_A	340958	7038871	6.00	9.00	3.00	TRC197674	0.005
TR1707_COQ_A	338736	7035239	0.00	2.00	2.00	TRC198859	0.01	TR1721_COQ_A	340961	7038875	9.00	12.00	3.00	TRC197675	0.005
TR1708_COQ_A	340560	7034787	0.00	2.00	2.00	TRC198860	0.08	TR1721_COQ_A	340959	7038877	12.00	15.00	3.00	TRC197676	0.005
TR1709_COQ_A	340862	7034852	0.00	1.00	1.00	TRC198861	0.005	TR1722_COQ_A	341543	7039442	0.00	3.00	3.00	TRC197677	0.005
TR1710_COQ_A	340748	7038603	0.00	3.00	3.00	TRC198862	0.01	TR1722_COQ_A	341546	7039445	3.00	6.00	3.00	TRC197678	0.005
TR1710_COQ_A	340749	7038605	3.00	6.00	3.00	TRC198863	0.005	TR1722_COQ_A	341548	7039447	6.00	9.00	3.00	TRC197679	0.005
TR1710_COQ_A	340750	7038609	6.00	9.00	3.00	TRC198864	0.005	TR1722_COQ_A	341551	7039447	9.00	12.00	3.00	TRC197680	0.005
TR1710_COQ_A	340752	7038610	9.00	12.00	3.00	TRC198866	0.01	TR1722_COQ_A	341551	7039449	12.00	15.00	3.00	TRC197682	0.005
TR1710_COQ_A	340754	7038614	12.00	15.00	3.00	TRC198867	0.01	TR1722_COQ_A	341551	7039450	15.00	18.00	3.00	TRC197683	0.005
TR1710_COQ_A	340755	7038615	15.00	18.00	3.00	TRC198868	0.01	TR1722_COQ_A	341554	7039452	18.00	21.00	3.00	TRC197684	0.005
TR1710_COQ_A	340756	7038618	18.00	21.00	3.00	TRC198869	0.01	TR1722_COQ_A	341557	7039453	21.00	24.00	3.00	TRC197685	0.005
TR1710_COQ_A	340757	7038620	21.00	24.00	3.00	TRC198870	0.01	TR1723_COQ_A	341504	7039665	0.00	3.00	3.00	TRC197686	0.005
TR1710_COQ_A	340757	7038624	24.00	27.00	3.00	TRC198871	0.01	TR1723_COQ_A	341507	7039666	3.00	6.00	3.00	TRC197687	0.005
TR1710_COQ_A	340758	7038627	27.00	30.00	3.00	TRC198872	0.01	TR1723_COQ_A	341512	7039677	6.00	9.00	3.00	TRC197688	0.01
TR1710_COQ_A	340758	7038630	30.00	33.00	3.00	TRC198874	0.005	TR1723_COQ_A	341513	7039671	9.00	12.00	3.00	TRC197690	0.02
TR1711_COQ_A	340764	7038635	0.00	3.00	3.00	TRC198875	0.005	TR1723_COQ_A	341516	7039672	12.00	15.00	3.00	TRC197691	0.07
TR1711_COQ_A	340764	7038638	3.00	6.00	3.00	TRC198876	0.005	TR1723_COQ_A	341518	7039673	15.00	18.00	3.00	TRC197692	0.01
TR1711_COQ_A	340767	7038638	6.00	9.00	3.00	TRC198877	0.005	TR1724_COQ_A	341530	7039682	0.00	3.00	3.00	TRC197693	0.005
TR1711_COQ_A	340769	7038641	9.00	12.00	3.00	TRC198878	0.01	TR1724_COQ_A	341533	7039683	3.00	6.00	3.00	TRC197694	0.01
TR1711_COQ_A	340770	7038644	12.00	15.00	3.00	TRC198879	0.005	TR1724_COQ_A	341533	7039685	6.00	9.00	3.00	TRC197695	0.005
TR1712_COQ_A	340779	7038659	0.00	3.00	3.00	TRC198880	0.01	TR1725_COQ_A	341134	7039584	0.00	3.00	3.00	TRC197696	0.09
TR1712_COQ_A	340783	7038660	3.00	6.00	3.00	TRC198883	0.005	TR1726_COQ_A	341092	7039414	0.00	3.00	3.00	TRC197698	0.16
TR1712_COQ_A	340785	7038663	6.00	9.00	3.00	TRC198884	0.005	TR1726_COQ_A	341092	7039416	3.00	6.00	3.00	TRC197699	0.03
TR1712_COQ_A	340786	7038664	9.00	12.00	3.00	TRC198885	0.01	TR1726_COQ_A	341094	7039416	6.00	9.00	3.00	TRC197700	0.005
TR1712_COQ_A	340787	7038668	12.00	15.00	3.00	TRC198886	0.04	TR1726_COQ_A	341097	7039417	9.00	12.00	3.00	TRC197802	0.08
TR1712_COQ_A	340789	7038668	15.00	18.00	3.00	TRC198887	0.005	TR1726_COQ_A	341099	7039419	12.00	15.00	3.00	TRC197803	0.01
TR1713_COQ_A	340796	7038679	0.00	3.00	3.00	TRC198888	0.005	TR1726_COQ_A	341111	7039426	15.00	18.00	3.00	TRC197804	0.01
TR1713_COQ_A	340798	7038681	3.00	6.00	3.00	TRC198890	0.005	TR1726_COQ_A	341113	7039428	18.00	21.00	3.00	TRC197805	0.01
TR1713_COQ_A	340799	7038683	6.00	9.00	3.00	TRC198891	0.005	TR1726_COQ_A	341114	7039429	21.00	24.00	3.00	TRC197806	0.03
TR1713_COQ_A	340801	7038684	9.00	12.00	3.00	TRC198892	0.005	TR1726_COQ_A	341117	7039431	24.00	27.00	3.00	TRC197807	0.07
TR1713_COQ_A	340805	7038687	12.00	15.00											

TRENCH_ID	UTM_E	UTM_N	FROM	TO	width (m)	Sample ID	Au ppm	TRENCH_ID	UTM_E	UTM_N	FROM	TO	width (m)	Sample ID	Au ppm
TR1730 COQ A	341031	7039370	42.00	45.00	3.00	TRC197845	0.02	TR1737 COQ A	341378	7039547	27.00	30.00	3.00	TRC197348	0.005
TR1730 COQ A	341030	7039371	45.00	48.00	3.00	TRC197846	0.01	TR1737 COQ A	341378	7039552	30.00	33.00	3.00	TRC197349	0.005
TR1731 COQ A	341023	7039367	0.00	3.00	3.00	TRC197847	0.05	TR1737 COQ A	341378	7039553	33.00	36.00	3.00	TRC197350	0.005
TR1731 COQ A	341020	7039366	3.00	6.00	3.00	TRC197848	0.01	TR1737 COQ A	341382	7039557	36.00	39.00	3.00	TRC197351	0.005
TR1731 COQ A	341018	7039363	6.00	9.00	3.00	TRC197850	0.01	TR1737 COQ A	341383	7039557	39.00	42.00	3.00	TRC197352	0.005
TR1731 COQ A	341017	7039359	9.00	12.00	3.00	TRC197851	0.005	TR1737 COQ A	341388	7039557	42.00	45.00	3.00	TRC197354	0.005
TR1732 COQ A	341003	7039348	0.00	3.00	3.00	TRC197852	0.03	TR1737 COQ A	341389	7039561	45.00	48.00	3.00	TRC197355	0.005
TR1732 COQ A	341000	7039346	3.00	6.00	3.00	TRC197853	0.01	TR1737 COQ A	341391	7039563	48.00	51.00	3.00	TRC197356	0.005
TR1732 COQ A	340996	7039344	6.00	9.00	3.00	TRC197854	0.01	TR1737 COQ A	341396	7039563	51.00	54.00	3.00	TRC197357	0.01
TR1733 COQ A	341169	7039350	0.00	3.00	3.00	TRC197244	0.005	TR1737 COQ A	341396	7039564	54.00	57.00	3.00	TRC197358	0.01
TR1733 COQ A	341173	7039353	3.00	6.00	3.00	TRC197245	0.005	TR1737 COQ A	341399	7039569	57.00	60.00	3.00	TRC197359	0.005
TR1733 COQ A	341177	7039355	6.00	9.00	3.00	TRC197246	0.005	TR1737 COQ A	341401	7039570	60.00	63.00	3.00	TRC197360	0.005
TR1733 COQ A	341177	7039357	9.00	12.00	3.00	TRC197247	0.005	TR1737 COQ A	341403	7039572	63.00	66.00	3.00	TRC197362	0.005
TR1733 COQ A	341181	7039361	12.00	15.00	3.00	TRC197248	0.005	TR1737 COQ A	341405	7039574	66.00	69.00	3.00	TRC197363	0.01
TR1734 COQ A	341191	7039364	0.00	3.00	3.00	TRC197250	0.005	TR1737 COQ A	341406	7039571	72.00	75.00	3.00	TRC197364	0.01
TR1734 COQ A	341194	7039367	3.00	6.00	3.00	TRC197251	0.01	TR1737 COQ A	341408	7039574	75.00	78.00	3.00	TRC197365	0.03
TR1734 COQ A	341194	7039369	6.00	9.00	3.00	TRC197252	0.02	TR1737 COQ A	341412	7039575	78.00	81.00	3.00	TRC197366	0.005
TR1734 COQ A	341195	7039372	9.00	12.00	3.00	TRC197253	0.005	TR1737 COQ A	341413	7039579	81.00	84.00	3.00	TRC197367	0.005
TR1734 COQ A	341196	7039374	12.00	15.00	3.00	TRC197254	0.005	TR1737 COQ A	341413	7039579	84.00	87.00	3.00	TRC197368	0.01
TR1734 COQ A	341197	7039373	15.00	18.00	3.00	TRC197255	0.005	TR1737 COQ A	341417	7039583	87.00	90.00	3.00	TRC197370	0.08
TR1734 COQ A	341201	7039373	18.00	21.00	3.00	TRC197256	0.005	TR1737 COQ A	341419	7039583	90.00	93.00	3.00	TRC197371	0.02
TR1734 COQ A	341204	7039375	21.00	24.00	3.00	TRC197258	0.01	TR1737 COQ A	341421	7039584	93.00	96.00	3.00	TRC197372	0.02
TR1734 COQ A	341206	7039379	24.00	27.00	3.00	TRC197259	0.005	TR1737 COQ A	341424	7039584	96.00	99.00	3.00	TRC197373	0.11
TR1734 COQ A	341208	7039381	27.00	30.00	3.00	TRC197260	0.005	TR1738 COQ A	341436	7039592	0.00	3.00	3.00	TRC197374	0.01
TR1734 COQ A	341208	7039381	30.00	33.00	3.00	TRC197261	0.01	TR1738 COQ A	341434	7039592	3.00	6.00	3.00	TRC197375	0.02
TR1734 COQ A	341209	7039382	33.00	36.00	3.00	TRC197262	0.005	TR1738 COQ A	341437	7039596	6.00	9.00	3.00	TRC197376	0.02
TR1734 COQ A	341213	7039383	36.00	39.00	3.00	TRC197263	0.02	TR1738 COQ A	341438	7039594	9.00	12.00	3.00	TRC197378	0.04
TR1734 COQ A	341214	7039385	39.00	42.00	3.00	TRC197264	0.02	TR1738 COQ A	341443	7039603	12.00	15.00	3.00	TRC197379	0.005
TR1734 COQ A	341216	7039389	42.00	45.00	3.00	TRC197266	0.02	TR1738 COQ A	341436	7039600	15.00	18.00	3.00	TRC197380	0.005
TR1734 COQ A	341219	7039391	45.00	48.00	3.00	TRC197267	0.94	TR1738 COQ A	341441	7039602	18.00	21.00	3.00	TRC197381	0.005
TR1734 COQ A	341220	7039394	48.00	51.00	3.00	TRC197268	0.02	TR1738 COQ A	341442	7039603	21.00	24.00	3.00	TRC197382	0.005
TR1734 COQ A	341221	7039396	51.00	54.00	3.00	TRC197269	0.3	TR1738 COQ A	341446	7039603	24.00	27.00	3.00	TRC197383	0.01
TR1734 COQ A	341223	7039397	54.00	57.00	3.00	TRC197270	0.1	TR1738 COQ A	341447	7039607	27.00	30.00	3.00	TRC197384	0.01
TR1734 COQ A	341224	7039400	57.00	60.00	3.00	TRC197271	0.43	TR1738 COQ A	341447	7039609	30.00	33.00	3.00	TRC197386	0.01
TR1735 COQ A	341128	7039407	0.00	3.00	3.00	TRC197272	2.02	TR1739 COQ A	341459	7039616	0.00	3.00	3.00	TRC197387	0.01
TR1735 COQ A	341233	7039407	3.00	6.00	3.00	TRC197274	0.02	TR1740 COQ A	341466	7039619	0.00	3.00	3.00	TRC197388	0.03
TR1735 COQ A	341236	7039415	6.00	9.00	3.00	TRC197275	0.03	TR1740 COQ A	341469	7039627	3.00	6.00	3.00	TRC197389	0.01
TR1735 COQ A	341239	7039415	9.00	12.00	3.00	TRC197276	0.03	TR1740 COQ A	341471	7039630	6.00	9.00	3.00	TRC197390	0.01
TR1735 COQ A	341243	7039413	12.00	15.00	3.00	TRC197277	0.01	TR1740 COQ A	341472	7039635	9.00	12.00	3.00	TRC197391	0.005
TR1735 COQ A	341242	7039418	15.00	18.00	3.00	TRC197278	0.03	TR1740 COQ A	341474	7039630	12.00	15.00	3.00	TRC197392	0.01
TR1735 COQ A	341241	7039421	18.00	21.00	3.00	TRC197279	0.01	TR1740 COQ A	341478	7039632	15.00	18.00	3.00	TRC197394	0.005
TR1735 COQ A	341243	7039424	21.00	24.00	3.00	TRC197280	0.01	TR1740 COQ A	341484	7039641	18.00	21.00	3.00	TRC197395	0.01
TR1735 COQ A	341243	7039426	24.00	27.00	3.00	TRC197282	0.17	TR1740 COQ A	341487	7039646	21.00	24.00	3.00	TRC197396	0.01
TR1735 COQ A	341246	7039430	27.00	30.00	3.00	TRC197283	0.03	TR1740 COQ A	341489	7039648	24.00	27.00	3.00	TRC197397	0.01
TR1735 COQ A	341246	7039431	30.00	33.00	3.00	TRC197284	0.01	TR1740 COQ A	341492	7039645	27.00	30.00	3.00	TRC197398	0.01
TR1735 COQ A	341245	7039433	33.00	36.00	3.00	TRC197285	0.01	TR1740 COQ A	341495	7039643	30.00	33.00	3.00	TRC197399	0.005
TR1735 COQ A	341248	7039435	36.00	39.00	3.00	TRC197286	1.63	TR1741 COQ A	349860	7033401	0.00	3.00	3.00	TRC197400	0.02
TR1735 COQ A	341251	7039438	39.00	42.00	3.00	TRC197287	0.06	TR1742 COQ A	348152	7034189	0.00	3.00	3.00	TRC197402	0.005
TR1735 COQ A	341254	7039440	42.00	45.00	3.00	TRC197288	0.04	TR1743 COQ A	346694	7035334	0.00	2.00	2.00	TRC197403	0.005
TR1735 COQ A	341255	7039441	45.00	48.00	3.00	TRC197290	0.02	TR1744 COQ A	343468	7035486	0.00	3.00	3.00	TRC197404	0.03
TR1735 COQ A	341257	7039441	48.00	51.00	3.00	TRC197291	0.01	TR1745 COQ A	342499	7035535	0.00	2.00	2.00	TRC197405	0.005
TR1735 COQ A	341258	7039446	51.00	54.00	3.00	TRC197292	0.02	TR1746 COQ A	341062	7034902	0.00	1.00	1.00	TRC197406	0.07
TR1735 COQ A	341262	7039446	54.00	57.00	3.00	TRC197293	0.005	TR1747 COQ A	341489	7035244	0.00	3.00	3.00	TRC197407	3.51
TR1735 COQ A	341263	7039450	57.00	60.00	3.00	TRC197294	0.005	TR1748 COQ A	343522	7041133	0.00	3.00	3.00	TRC198818	0.01
TR1735 COQ A	341264	7039453	60.00	63.00	3.00	TRC197295	0.005	TR1749 COQ A	343561	7041267	0.00	2.00	2.00	TRC198819	0.005
TR1735 COQ A	341266	7039454	63.00	66.00	3.00	TRC197296	0.005	TR1750 COQ A	343333	7041692	0.00	1.00	1.00	TRC198820	0.01
TR1735 COQ A	341264	7039456	66.00	69.00	3.00	TRC197298	0.005	TR1751 COQ A	343307	7041600	0.00	2.00	2.00	TRC198821	0.005
TR1735 COQ A	341268	7039458	69.00	72.00	3.00	TRC197299	0.005	TR1752 COQ A	343257	7041511	0.00	3.00	3.00	TRC198822	0.01
TR1735 COQ A	341271	7039461	72.00	75.00	3.00	TRC197300	0.005	TR1753 COQ A	343438	7041155	0.00	2.00	2.00	TRC198823	0.01
TR1735 COQ A	341273	7039462	75.00	78.00	3.00	TRC197301	0.01	TR1754 COQ A	343193	7041378	0.00	2.00	2.00	TRC198824	0.01
TR1735 COQ A	341276	7039465	78.00	81.00	3.00	TRC197302	0.01	TR1755 COQ A	343127	7041422	0.00	2.00	2.00	TRC198826	0.03
TR1735 COQ A	341277	7039466	81.00	84.00	3.00	TRC197303	0.07	TR1756 COQ A	343102	7041411	0.00	2.00	2.00	TRC198827	0.68
TR1735 COQ A	341277	7039469	84.00	87.00	3.00	TRC197304	0.05	TR1757 COQ A	343225	7041248	0.00	1.00	1.00	TRC198828	0.16
TR1735 COQ A	341281	7039469	87.00	90.00	3.00	TRC197306	0.01	TR1758 COQ A	343012	7041394	0.00	1.00	1.00	TRC198829	0.03
TR1735 COQ A	341281	7039473	90.00	93.00	3.00	TRC197307	0.005	TR1759 COQ A	342970	7041241	0.00	2.00	2.00	TRC198830	0.005
TR1735 COQ A	341284	7039473	93.00	96.00	3.00	TRC197308	0.02	TR1760 COQ A	343012	7040954	0.00	2.00	2.00	TRC198831	0.01
TR1735 COQ A	341287	7039474	96.00	99.00	3.00	TRC197309	0.05	TR1761 COQ A	343098	7040699	0.00	1.00	1.00	TRC198832	0.005
TR1735 COQ A	341290	7039472	99.00	102.00	3.00	TRC197310	0.02	TR1762 COQ A	343038	7040882	0.00	3.00	3.00	TRC198834	0.005
TR1735 COQ A	341292														

TRENCH ID	UTM_E	UTM_N	FROM	TO	width (m)	Sample ID	Au ppm	TRENCH ID	UTM_E	UTM_N	FROM	TO	width (m)	Sample ID	Au ppm
TR1795 COQ A	343479	7039652	0.00	2.00	2.00	TRC197023	0.005	TR1809 COQ A	340781	7039610	3.00	6.00	3.00	TRC197764	0.01
TR1796 COQ A	343113	7039760	0.00	1.00	1.00	TRC197024	0.01	TR1809 COQ A	340783	7039612	6.00	9.00	3.00	TRC197765	0.02
TR1797 COQ A	342932	7040029	0.00	1.00	1.00	TRC197026	0.01	TR1810 COQ A	340782	7039617	0.00	3.00	3.00	TRC197766	0.06
TR1798 COQ A	343352	7039976	0.00	1.00	1.00	TRC197027	0.005	TR1810 COQ A	340784	7039620	3.00	6.00	3.00	TRC197767	0.02
TR1799 COQ A	340369	7039131	0.00	3.00	3.00	TRC197501	0.005	TR1810 COQ A	340786	7039622	6.00	9.00	3.00	TRC197768	0.005
TR1799 COQ A	340368	7039135	3.00	6.00	3.00	TRC197502	0.005	TR1810 COQ A	340788	7039625	9.00	12.00	3.00	TRC197770	0.02
TR1799 COQ A	340370	7039138	6.00	9.00	3.00	TRC197503	0.005	TR1810 COQ A	340791	7039628	12.00	15.00	3.00	TRC197771	0.02
TR1799 COQ A	340371	7039141	9.00	12.00	3.00	TRC197504	0.005	TR1810 COQ A	340793	7039630	15.00	18.00	3.00	TRC197772	0.01
TR1800 COQ A	340364	7039162	0.00	3.00	3.00	TRC197506	0.005	TR1810 COQ A	340795	7039632	18.00	21.00	3.00	TRC197773	0.12
TR1800 COQ A	340365	7039164	3.00	6.00	3.00	TRC197507	0.005	TR1810 COQ A	340797	7039634	21.00	24.00	3.00	TRC197774	0.22
TR1800 COQ A	340366	7039166	6.00	9.00	3.00	TRC197508	0.005	TR1810 COQ A	340798	7039636	24.00	27.00	3.00	TRC197775	0.03
TR1800 COQ A	340367	7039168	9.00	12.00	3.00	TRC197509	0.005	TR1810 COQ A	340800	7039639	27.00	30.00	3.00	TRC197776	0.005
TR1801 COQ A	340378	7039163	0.00	3.00	3.00	TRC197510	0.005	TR1810 COQ A	340802	7039641	30.00	33.00	3.00	TRC197778	0.005
TR1801 COQ A	340379	7039166	3.00	6.00	3.00	TRC197511	0.01	TR1810 COQ A	340804	7039644	33.00	36.00	3.00	TRC197779	0.005
TR1801 COQ A	340379	7039169	6.00	9.00	3.00	TRC197512	0.005	TR1810 COQ A	340807	7039645	36.00	39.00	3.00	TRC197780	0.005
TR1801 COQ A	340379	7039173	9.00	12.00	3.00	TRC197514	0.005	TR1810 COQ A	340803	7039648	39.00	42.00	3.00	TRC197781	0.01
TR1801 COQ A	340380	7039176	12.00	15.00	3.00	TRC197515	0.005	TR1810 COQ A	340803	7039650	42.00	45.00	3.00	TRC197782	0.005
TR1801 COQ A	340380	7039178	15.00	18.00	3.00	TRC197516	0.01	TR1810 COQ A	340803	7039655	45.00	48.00	3.00	TRC197783	0.09
TR1801 COQ A	340378	7039182	18.00	21.00	3.00	TRC197517	0.005	TR1810 COQ A	340805	7039657	48.00	51.00	3.00	TRC197784	0.01
TR1801 COQ A	340378	7039185	21.00	24.00	3.00	TRC197518	0.01	TR1810 COQ A	340808	7039659	51.00	54.00	3.00	TRC197786	0.005
TR1801 COQ A	340381	7039186	24.00	27.00	3.00	TRC197519	0.02	TR1810 COQ A	340810	7039659	54.00	57.00	3.00	TRC197787	0.005
TR1801 COQ A	340385	7039190	27.00	30.00	3.00	TRC197520	0.02	TR1810 COQ A	340812	7039661	57.00	60.00	3.00	TRC197788	0.01
TR1801 COQ A	340387	7039191	30.00	33.00	3.00	TRC197522	0.01	TR1810 COQ A	340815	7039662	60.00	63.00	3.00	TRC197789	0.005
TR1801 COQ A	340391	7039191	33.00	36.00	3.00	TRC197523	0.005	TR1811 COQ A	340830	7039669	0.00	3.00	3.00	TRC197790	0.35
TR1801 COQ A	340394	7039194	36.00	39.00	3.00	TRC197524	0.005	TR1811 COQ A	340832	7039672	3.00	6.00	3.00	TRC197791	0.02
TR1801 COQ A	340397	7039197	39.00	42.00	3.00	TRC197525	0.01	TR1811 COQ A	340834	7039675	6.00	9.00	3.00	TRC197792	0.04
TR1801 COQ A	340399	7039201	42.00	45.00	3.00	TRC197526	0.005	TR1811 COQ A	340835	7039677	9.00	12.00	3.00	TRC197794	0.13
TR1801 COQ A	340398	7039202	45.00	48.00	3.00	TRC197527	0.005	TR1812 COQ A	340874	7039746	0.00	3.00	3.00	TRC197795	0.005
TR1802 COQ A	340419	7039204	0.00	3.00	3.00	TRC197528	0.005	TR1812 COQ A	340877	7039748	3.00	6.00	3.00	TRC197796	0.01
TR1802 COQ A	340422	7039203	3.00	6.00	3.00	TRC197530	0.005	TR1812 COQ A	340878	7039751	6.00	9.00	3.00	TRC197797	0.05
TR1802 COQ A	340421	7039204	6.00	9.00	3.00	TRC197531	0.005	TR1812 COQ A	340880	7039750	9.00	12.00	3.00	TRC197798	0.27
TR1802 COQ A	340424	7039206	9.00	12.00	3.00	TRC197532	0.01	TR1812 COQ A	340884	7039750	12.00	15.00	3.00	TRC197799	0.09
TR1802 COQ A	340427	7039207	12.00	15.00	3.00	TRC197533	0.04	TR1812 COQ A	340887	7039751	15.00	18.00	3.00	TRC197800	0.77
TR1802 COQ A	340428	7039209	15.00	18.00	3.00	TRC197534	0.005	TR1812 COQ A	340889	7039751	18.00	21.00	3.00	TRC196002	0.03
TR1802 COQ A	340430	7039212	18.00	21.00	3.00	TRC197535	0.005	TR1812 COQ A	340892	7039754	21.00	24.00	3.00	TRC196003	0.16
TR1802 COQ A	340429	7039215	21.00	24.00	3.00	TRC197536	0.005	TR1812 COQ A	340895	7039756	24.00	27.00	3.00	TRC196004	0.02
TR1803 COQ A	340468	7039233	0.00	3.00	3.00	TRC197538	0.01	TR1812 COQ A	340895	7039759	27.00	30.00	3.00	TRC196005	0.17
TR1803 COQ A	340467	7039231	3.00	6.00	3.00	TRC197539	0.005	TR1812 COQ A	340898	7039758	30.00	33.00	3.00	TRC196006	0.04
TR1803 COQ A	340465	7039228	6.00	9.00	3.00	TRC197540	0.005	TR1812 COQ A	340900	7039760	33.00	36.00	3.00	TRC196007	0.05
TR1803 COQ A	340464	7039225	9.00	12.00	3.00	TRC197541	0.005	TR1812 COQ A	340903	7039761	36.00	39.00	3.00	TRC196008	0.4
TR1803 COQ A	340464	7039221	12.00	15.00	3.00	TRC197542	0.005	TR1812 COQ A	340905	7039763	39.00	42.00	3.00	TRC196010	0.06
TR1803 COQ A	340465	7039219	15.00	18.00	3.00	TRC197543	0.005	TR1813 COQ A	340913	7039771	0.00	3.00	3.00	TRC196011	0.05
TR1804 COQ A	340487	7039274	0.00	3.00	3.00	TRC197544	0.005	TR1813 COQ A	340916	7039773	3.00	6.00	3.00	TRC196012	0.16
TR1804 COQ A	340484	7039272	3.00	6.00	3.00	TRC197546	0.005	TR1813 COQ A	340916	7039774	6.00	9.00	3.00	TRC196013	0.04
TR1804 COQ A	340483	7039269	6.00	9.00	3.00	TRC197547	0.005	TR1813 COQ A	340922	7039775	9.00	12.00	3.00	TRC196014	0.005
TR1804 COQ A	340539	7039280	0.00	3.00	3.00	TRC197548	0.06	TR1813 COQ A	340924	7039778	12.00	15.00	3.00	TRC196015	0.13
TR1804 COQ A	340533	7039281	3.00	6.00	3.00	TRC197549	0.01	TR1813 COQ A	340925	7039778	15.00	18.00	3.00	TRC196016	0.02
TR1804 COQ A	340529	7039283	6.00	9.00	3.00	TRC197550	0.01	TR1814 COQ A	341995	7041130	0.00	3.00	3.00	TRC197855	0.01
TR1804 COQ A	340526	7039284	9.00	12.00	3.00	TRC197551	0.06	TR1814 COQ A	341996	7041132	3.00	6.00	3.00	TRC197856	0.01
TR1805 COQ A	340580	7039311	0.00	3.00	3.00	TRC197552	0.13	TR1814 COQ A	341999	7041133	6.00	9.00	3.00	TRC197858	0.005
TR1805 COQ A	340576	7039310	3.00	6.00	3.00	TRC197554	0.03	TR1814 COQ A	342003	7041134	9.00	12.00	3.00	TRC197859	0.005
TR1805 COQ A	340573	7039307	6.00	9.00	3.00	TRC197555	0.005	TR1814 COQ A	342005	7041135	12.00	15.00	3.00	TRC197860	0.02
TR1806 COQ A	340638	7039454	0.00	3.00	3.00	TRC197556	0.02	TR1814 COQ A	342009	7041135	15.00	18.00	3.00	TRC197861	0.005
TR1806 COQ A	340641	7039456	3.00	6.00	3.00	TRC197557	0.04	TR1814 COQ A	342011	7041136	18.00	21.00	3.00	TRC197862	0.005
TR1806 COQ A	340643	7039458	6.00	9.00	3.00	TRC197558	0.01	TR1815 COQ A	342015	7041140	0.00	2.00	2.00	TRC197863	0.07
TR1806 COQ A	340645	7039460	9.00	12.00	3.00	TRC197559	0.04	TR1815 COQ A	342016	7041140	2.00	5.00	3.00	TRC197864	0.02
TR1806 COQ A	340647	7039461	12.00	15.00	3.00	TRC197560	0.01	TR1815 COQ A	342018	7041141	5.00	8.00	3.00	TRC197866	0.01
TR1806 COQ A	340649	7039464	15.00	18.00	3.00	TRC197562	0.02	TR1816 COQ A	342030	7041151	0.00	3.00	3.00	TRC197867	0.01
TR1806 COQ A	340651	7039466	18.00	21.00	3.00	TRC197563	0.02	TR1816 COQ A	342032	7041152	3.00	6.00	3.00	TRC197868	0.03
TR1806 COQ A	340653	7039469	21.00	24.00	3.00	TRC197564	0.02	TR1816 COQ A	342035	7041153	6.00	9.00	3.00	TRC197869	0.01
TR1806 COQ A	340653	7039471	24.00	27.00	3.00	TRC197565	0.01	TR1816 COQ A	342036	7041155	9.00	12.00	3.00	TRC197870	0.01
TR1806 COQ A	340654	7039474	27.00	30.00	3.00	TRC197566	0.1	TR1816 COQ A	342039	7041157	12.00	15.00	3.00	TRC197871	0.005
TR1806 COQ A	340656	7039476	30.00	33.00	3.00	TRC197567	0.04	TR1816 COQ A	342041	7041157	15.00	18.00	3.00	TRC197872	0.005
TR1806 COQ A	340658	7039478	33.00	36.00	3.00	TRC197568	0.05	TR1816 COQ A	342042	7041158	18.00	21.00	3.00	TRC197874	0.01
TR1806 COQ A	340660	7039481	36.00	39.00	3.00	TRC197570	0.03	TR1816 COQ A	342044	7041160	21.00	24.00	3.00	TRC197875	0.005
TR1806 COQ A	340662	7039484	39.00	42.00	3.00	TRC197571	0.59	TR1816 COQ A	342045	7041162	24.00	27.00	3.00	TRC197876	0.005
TR1806 COQ A	340664	7039486	42.00	45.00	3.00	TRC197572	0.01	TR1816 COQ A	342047	7041165	27.00	30.00	3.00	TRC197877	0.005
TR1806 COQ A	340666	7039488	45.00	48.00	3.00	TRC197573	0.11	TR1816 COQ A	342051	7041167	30.00	33.00	3.00	TRC197878	0.005
TR1806 COQ A	340668	7039489	48.00												

TRENCH ID	UTM E	UTM N	FROM	TO	width (m)	Sample ID	Au ppm
TR1816_COQ_A	342109	7041217	129.00	132.00	3.00	TRC196032	0.01
TR1816_COQ_A	342111	7041218	132.00	135.00	3.00	TRC196034	0.01
TR1816_COQ_A	342112	7041219	135.00	138.00	3.00	TRC196035	0.005
TR1816_COQ_A	342113	7041223	138.00	141.00	3.00	TRC196036	0.005
TR1816_COQ_A	342114	7041225	141.00	144.00	3.00	TRC196037	0.005
TR1816_COQ_A	342115	7041226	144.00	147.00	3.00	TRC196038	0.005
TR1816_COQ_A	342117	7041228	147.00	150.00	3.00	TRC196039	0.005
TR1816_COQ_A	342121	7041228	150.00	153.00	3.00	TRC196040	0.005
TR1816_COQ_A	342123	7041228	153.00	156.00	3.00	TRC196042	0.005
TR1816_COQ_A	342124	7041231	156.00	159.00	3.00	TRC196043	0.01
TR1816_COQ_A	342126	7041233	159.00	162.00	3.00	TRC196044	0.005
TR1817_COQ_A	342202	7041309	0.00	3.00	3.00	TRC196045	0.005
TR1817_COQ_A	342208	7041317	9.00	12.00	3.00	TRC196048	0.005
TR1819_COQ_A	342226	7041321	0.00	3.00	3.00	TRC196051	0.03
TR1819_COQ_A	342227	7041321	3.00	6.00	3.00	TRC196052	0.005
TR1821_COQ_A	342239	7041307	0.00	3.00	3.00	TRC196054	0.005
TR1822_COQ_A	342241	7041304	0.00	3.00	3.00	TRC196055	0.01
TR1823_COQ_A	342245	7041308	0.00	3.00	3.00	TRC196056	0.01
TR1824_COQ_A	342534	7041127	0.00	3.00	3.00	TRC196059	0.02
TR1824_COQ_A	342534	7041126	3.00	6.00	3.00	TRC196060	0.005
TR1824_COQ_A	342530	7041124	6.00	9.00	3.00	TRC196061	0.005
TR1824_COQ_A	342529	7041120	9.00	12.00	3.00	TRC196062	0.01
TR1824_COQ_A	342526	7041123	12.00	15.00	3.00	TRC196063	0.005
TR1824_COQ_A	342525	7041114	15.00	18.00	3.00	TRC196064	0.02
TR1824_COQ_A	342522	7041118	18.00	21.00	3.00	TRC196066	0.01
TR1824_COQ_A	342522	7041116	21.00	24.00	3.00	TRC196067	0.005
TR1824_COQ_A	342519	7041114	24.00	27.00	3.00	TRC196068	0.005
TR1824_COQ_A	342519	7041112	27.00	30.00	3.00	TRC196069	0.01
TR1824_COQ_A	342517	7041099	30.00	33.00	3.00	TRC196070	0.005
TR1824_COQ_A	342515	7041096	33.00	36.00	3.00	TRC196071	0.01
TR1824_COQ_A	342513	7041095	36.00	39.00	3.00	TRC196072	0.005
TR1824_COQ_A	342510	7041094	39.00	42.00	3.00	TRC196074	0.04
TR1824_COQ_A	342508	7041091	42.00	45.00	3.00	TRC196075	0.02
TR1824_COQ_A	342506	7041091	45.00	48.00	3.00	TRC196076	0.01
TR1824_COQ_A	342502	7041089	48.00	51.00	3.00	TRC196077	0.03
TR1824_COQ_A	342500	7041086	51.00	54.00	3.00	TRC196078	0.03
TR1824_COQ_A	342496	7041084	54.00	57.00	3.00	TRC196079	0.01
TR1824_COQ_A	342494	7041083	57.00	60.00	3.00	TRC196080	0.005
TR1824_COQ_A	342490	7041082	60.00	63.00	3.00	TRC196082	0.01
TR1824_COQ_A	342487	7041078	63.00	66.00	3.00	TRC196083	0.01
TR1824_COQ_A	342484	7041079	66.00	69.00	3.00	TRC196084	0.005
TR1824_COQ_A	342483	7041077	69.00	72.00	3.00	TRC196085	0.005
TR1824_COQ_A	342483	7041077	72.00	75.00	3.00	TRC196086	0.01
TR1824_COQ_A	342482	7041074	75.00	78.00	3.00	TRC196087	0.01
TR1825_COQ_A	342469	7041056	0.00	3.00	3.00	TRC196088	0.005
TR1825_COQ_A	342465	7041056	3.00	6.00	3.00	TRC196090	0.005
TR1825_COQ_A	342465	7041052	6.00	9.00	3.00	TRC196091	0.005
TR1826_COQ_A	342413	7041000	0.00	3.00	3.00	TRC196092	0.005
TR1826_COQ_A	342411	7041000	3.00	6.00	3.00	TRC196093	0.005
TR1826_COQ_A	342405	7041000	6.00	9.00	3.00	TRC196094	0.005
TR1827_COQ_A	342397	7041000	0.00	3.00	3.00	TRC196095	0.01
TR1827_COQ_A	342395	7041000	3.00	6.00	3.00	TRC196096	0.005
TR1828_COQ_A	342388	7040968	0.00	3.00	3.00	TRC196098	0.005
TR1828_COQ_A	342381	7040973	3.00	6.00	3.00	TRC196099	0.005
TR1829_COQ_A	342345	7040955	0.00	3.00	3.00	TRC196100	0.62
TR1830_COQ_A	343857	7040078	0.00	1.00	1.00	TRC196219	0.01
TR1831_COQ_A	343814	7040134	0.00	2.00	2.00	TRC196220	0.005
TR1832_COQ_A	344018	7039915	0.00	1.00	1.00	TRC196221	0.005
TR1833_COQ_A	344010	7039943	0.00	1.00	1.00	TRC196222	0.01
TR1834_COQ_A	344148	7040658	0.00	2.00	2.00	TRC196223	0.005
TR1835_COQ_A	343623	7041504	0.00	1.00	1.00	TRC196224	0.005
TR1836_COQ_A	343769	7041625	0.00	1.00	1.00	TRC196226	0.005

APPENDIX 2 – JORC TABLES

JORC Table 1

Section 1: Sampling Techniques and Data

Section 1: Sampling Techniques and Data

Criteria	JORC Code explanation	Commentary
Sampling techniques	<ul style="list-style-type: none"> Nature and quality of sampling (e.g. cut channels, random chips, or specific specialised industry standard measurement tools appropriate to the minerals under investigation, such as downhole gamma sondes, or handheld XRF instruments, etc.). These examples should not be taken as limiting the broad meaning of sampling. 	Tesoro completed channel sampling. Sampling processes are considered appropriate for the style of mineralisation.
	<ul style="list-style-type: none"> Include reference to measures taken to ensure sample representivity and the appropriate calibration of any measurement tools or systems used. 	Tesoro completed channel sampling, Sampling processes are considered appropriate for the style of mineralisation. Channel sampling sites were painted across the sample site by Tesoro geologists to the width of the sample. Surficial material was removed from the sample.
	<ul style="list-style-type: none"> Aspects of the determination of mineralisation that are Material to the Public Report. In cases where 'industry standard' work has been done; this would be relatively simple (e.g. 'reverse circulation drilling was used to obtain 1 m samples from which 3 kg was pulverised to produce a 30 g charge for fire assay'). In other cases, more explanation may be required, such as where there is coarse gold that has inherent sampling problems. Unusual commodities or mineralisation types (e.g. submarine nodules) may warrant disclosure of detailed information. 	<p>Tesoro has completed a channel sampling program of 2382 samples. Sampling was by industry standard technique including:</p> <ul style="list-style-type: none"> location of the station using handheld GPS. Outcrop is brushed with a hand held brush to clean off surficial debris prior to sampling. A continuous rock chip sample is hammered off the outcrop along the painted sample line. Samples of up to 2kg of rock are packed in plastic bags with assay-number tickets stapled to the bag.
Drilling techniques	<ul style="list-style-type: none"> Drill type (e.g. core, reverse circulation, open-hole hammer, rotary air blast, auger, Bangka, sonic, etc.) and details (e.g. core diameter, triple or standard tube, depth of diamond tails, face-sampling bit or other type, whether core is oriented and if so, by what method, etc.). 	No drilling has been completed in the reported results of this report.
Drill sample recovery	<ul style="list-style-type: none"> Method of recording and assessing core and chip sample recoveries and results assessed. 	No drilling has been completed in the reported results of this report.
	<ul style="list-style-type: none"> Measures taken to maximise sample recovery and ensure representative nature of the samples. 	No drilling has been completed in the reported results of this report.
	<ul style="list-style-type: none"> Whether a relationship exists between sample recovery and grade and whether sample bias may have occurred due to preferential loss/gain of fine/coarse material. 	No drilling has been completed in the reported results of this report.
Logging	<ul style="list-style-type: none"> Whether core and chip samples have been geologically and geotechnically logged to a level of detail to support appropriate Mineral Resource estimation, mining studies and metallurgical studies. 	No drilling has been completed in the reported results of this report.

Criteria	JORC Code explanation	Commentary
	<ul style="list-style-type: none"> Whether logging is qualitative or quantitative in nature. Core (or costean, channel, etc.) photography. 	No drilling has been completed in the reported results of this report.
	<ul style="list-style-type: none"> The total length and percentage of the relevant intersections logged. 	No drilling has been completed in the reported results of this report.
Subsampling techniques and sample preparation	<ul style="list-style-type: none"> If core, whether cut or sawn and whether quarter, half or all core taken. 	No drilling has been completed in the reported results of this report.
	<ul style="list-style-type: none"> If non-core, whether riffled, tube sampled, rotary split, etc. and whether sampled wet or dry. 	No drilling has been completed in the reported results of this report.
	<ul style="list-style-type: none"> For all sample types, the nature, quality and appropriateness of the sample preparation technique. 	No drilling has been completed in the reported results of this report.
	<ul style="list-style-type: none"> Quality control procedures adopted for all subsampling stages to maximise representivity of samples. 	No drilling has been completed in the reported results of this report.
	<ul style="list-style-type: none"> Measures taken to ensure that the sampling is representative of the in-situ material collected, including for instance results for field duplicate/second-half sampling. 	No drilling has been completed in the reported results of this report.
	<ul style="list-style-type: none"> Whether sample sizes are appropriate to the grain size of the material being sampled. 	No drilling has been completed in the reported results of this report.
Quality of assay data and laboratory tests	<ul style="list-style-type: none"> The nature, quality and appropriateness of the assaying and laboratory procedures used and whether the technique is considered partial or total. 	Tesoro's channel sampling program , was undertaken using a 50g fire assay technique for gold. QAQC data was monitored and reported by Cube Consulting. Reviewing the summary of results by Cube the overall survey is of reasonable quality and fit for purpose for geochemical exploration.
	<ul style="list-style-type: none"> For geophysical tools, spectrometers, handheld XRF instruments, etc., the parameters used in determining the analysis including instrument make and model, reading times, calibrations factors applied and their derivation, etc. 	Standard chemical analyses were used for grade determination. There was no reliance on determination of analysis by geophysical tools.
	<ul style="list-style-type: none"> Nature of quality control procedures adopted (e.g. standards, blanks, duplicates, external laboratory checks) and whether acceptable levels of accuracy (i.e. lack of bias) and precision have been established. 	Standards and blanks have been inserted into the sample stream every 20 samples, which is deemed acceptable for a program of this nature.
Verification of sampling and assaying	<ul style="list-style-type: none"> The verification of significant intersections by either independent or alternative company personnel. 	No drilling has been completed in the reported results of this report.
	<ul style="list-style-type: none"> The use of twinned holes. 	No drilling has been completed in the reported results of this report.
	<ul style="list-style-type: none"> Documentation of primary data, data entry procedures, data verification, data storage (physical and electronic) protocols. 	Sample data is digitally entered and stored following documented sample and data handling protocols which have been reviewed by CSA Global. The protocols are considered adequate.
	<ul style="list-style-type: none"> Discuss any adjustment to assay data. 	No adjustments were made to Tesoro geochemistry
Location of data points	<ul style="list-style-type: none"> Accuracy and quality of surveys used to locate drill holes (collar and downhole surveys), trenches, mine workings and other locations used in Mineral Resource estimation. 	Sample locations have been located using a handheld GPS
	<ul style="list-style-type: none"> Specification of the grid system used. 	The El Zorro Project uses the PSAD56 grid system

Criteria	JORC Code explanation	Commentary
	<ul style="list-style-type: none"> Quality and adequacy of topographic control. 	The topography generated from a detailed topographic survey and generation of a DTM
Data spacing and distribution	<ul style="list-style-type: none"> Data spacing for reporting of Exploration Results. 	The channel sampling is collected on a nominal 1m long channel, up to a maximum of 3m. this spacing is deemed acceptable for the style of mineralisation.
	<ul style="list-style-type: none"> Whether the data spacing and distribution is sufficient to establish the degree of geological and grade continuity appropriate for the Mineral Resource and Ore Reserve estimation procedure(s) and classifications applied. 	The channel sample spacing is deemed appropriate for this stage of exploration.
	<ul style="list-style-type: none"> Whether sample compositing has been applied. 	No compositing has been used
Orientation of data in relation to geological structure	<ul style="list-style-type: none"> Whether the orientation of sampling achieves unbiased sampling of possible structures and the extent to which this is known, considering the deposit type. 	Channel samples are generally, where possible, sampled perpendicular to interpreted geological structures.
	<ul style="list-style-type: none"> If the relationship between the drilling orientation and the orientation of key mineralised structures is considered to have introduced a sampling bias, this should be assessed and reported if material. 	No drilling has been completed in the reported results of this report.
Sample security	<ul style="list-style-type: none"> The measures taken to ensure sample security. 	Chain of Custody of digital data is managed by the Company. Physical material was stored on site and, when necessary, delivered to the assay laboratory. Thereafter laboratory samples were controlled by the nominated laboratory which to date has been ALS Laboratories, Santiago. All sample collection was controlled by digital sample control file(s) and hardcopy ticket books.
Audits or reviews	<ul style="list-style-type: none"> The results of any audits or reviews of sampling techniques and data. 	No audits have been undertaken.

(Criteria in this section apply to all succeeding sections)

Section 2: Reporting of Exploration Results

(Criteria listed in the preceding section also apply to this section)

Criteria	JORC Code explanation	Commentary
Mineral tenement and land tenure status	<ul style="list-style-type: none"> Type, reference name/number, location and ownership including agreements or material issues with third parties such as joint ventures, partnerships, overriding royalties, native title interests, historical sites, wilderness or national park and environmental settings. 	Information regarding tenure is included in the Company's March 2022 quarterly activities report released to the ASX on 29 April 2022.
	<ul style="list-style-type: none"> The security of the tenure held at the time of reporting along with any known impediments to obtaining a licence to operate in the area. 	The Concession is believed to be in good standing with the governing authority and there is no known impediment to operating in the area.
Exploration done by other parties	<ul style="list-style-type: none"> Acknowledgment and appraisal of exploration by other parties. 	Little historical exploration has been undertaken in either project area. Coeur d'Alene's Chilean exploration division undertook activities on the Coquetas prospect, under an option agreement with the previous owners between April 1990 and January 1993.
Geology	<ul style="list-style-type: none"> Deposit type, geological setting and style of mineralisation. 	<p>The mineralisation model is to likely to be intrusive related gold deposit. The key characteristics that are consistent with this style deposit include:</p> <ul style="list-style-type: none"> Low sulphide content, (typically <5%); reduced ore mineral assemblage that typically comprises pyrite and lacks primary magnetite or hematite Mineralisation occurs as sheeted vein deposits or stockwork assemblages and often combine gold with variably elevated Bi, W, As, Mo, Te, and/or Sb but low concentrations of base metals as seen in the initial four holes by Tesoro at El Zorro

Criteria	JORC Code explanation	Commentary
		<ul style="list-style-type: none"> Restricted and commonly weak proximal hydrothermal alteration Intrusions of intermediate to felsic composition.
Drillhole information	<ul style="list-style-type: none"> A summary of all information material to the understanding of the exploration results including a tabulation of the following information for all Material drillholes: <ul style="list-style-type: none"> easting and northing of the drillhole collar elevation or RL (Reduced Level – elevation above sea level in metres) of the drillhole collar dip and azimuth of the hole downhole length and interception depth hole length. If the exclusion of this information is justified on the basis that the information is not Material and this exclusion does not detract from the understanding of the report, the Competent Person should clearly explain why this is the case. 	See prospectus dated 30 th October 2019 lodged by Plukka Ltd
Data aggregation methods	<ul style="list-style-type: none"> In reporting Exploration Results, weighting averaging techniques, maximum and/or minimum grade truncations (e.g. cutting of high grades) and cut-off grades are usually Material and should be stated. 	El Zorro: No cutting of grades has been undertaken at this early stage of exploration. Channel intercepts are calculated using a length weighted averaging method.
	<ul style="list-style-type: none"> Where aggregate intercepts incorporate short lengths of high grade results and longer lengths of low grade results, the procedure used for such aggregation should be stated and some typical examples of such aggregations should be shown in detail. 	Along Channel length weighted average results are calculated using a 0.10g/t Au cut off and a maximum of 5m internal dilution
	<ul style="list-style-type: none"> The assumptions used for any reporting of metal equivalent values should be clearly stated. 	No metal equivalents are reported.
Relationship between mineralisation widths and intercept lengths	<ul style="list-style-type: none"> These relationships are particularly important in the reporting of Exploration Results. 	
	<ul style="list-style-type: none"> If the geometry of the mineralisation with respect to the drillhole angle is known, its nature should be reported. 	EL Zorro: The mineralisation forms sub-vertical sheeted veins and individual veins and may form plunging zones within the mineralised structures. Drilling and sampling by Tesoro has been undertaken to test these orientations.
	<ul style="list-style-type: none"> If it is not known and only the downhole lengths are reported, there should be a clear statement to this effect (e.g. 'downhole length, true width not known'). 	EL Zorro: Exploration results are reported as along channel widths as the true width is not known with any certainty.
Diagrams	<ul style="list-style-type: none"> Appropriate maps and sections (with scales) and tabulations of intercepts should be included for any significant discovery being reported. These should include, but not be limited to a plan view of drillhole collar locations and appropriate sectional views. 	Relevant maps and diagrams are included in the body of the report.
Balanced reporting	<ul style="list-style-type: none"> Where comprehensive reporting of all Exploration Results is not practicable, representative reporting of both low and high grades and/or widths should be practiced to avoid misleading reporting of Exploration Results. 	All assay results from sampling are reported.
Other substantive exploration data	<ul style="list-style-type: none"> Other exploration data, if meaningful and material, should be reported including (but not limited to): geological observations; geophysical survey results; geochemical survey results; bulk samples – size and method of treatment; metallurgical test results; bulk density, groundwater, geotechnical and rock characteristics; potential deleterious or contaminating substances. 	All material exploration data is reported in the body of the report.

Criteria	JORC Code explanation	Commentary
Further work	<ul style="list-style-type: none"> The nature and scale of planned further work (e.g. tests for lateral extensions or depth extensions or large-scale step-out drilling). 	<p>El Zorro: Further work will be focused on drill testing the Coquetas mineralisation and additional prospects as defined in the work program. Core will be used for metallurgical testwork and resource modelling is planned.</p>
	<ul style="list-style-type: none"> Diagrams clearly highlighting the areas of possible extensions, including the main geological interpretations and future drilling areas, provided this information is not commercially sensitive. 	<p>Diagrams have been included in the body of this report.</p>