



11 JULY 2022

**DRILLING PROGRAMS COMPLETED AT CORK TREE WELL,
BRIGHTSTAR SOUTH AND ALPHA PROJECT AREAS**

HIGHLIGHTS

- 44 holes for ~6,500m completed at Cork Tree Well and Delta 2 prospect
- Cork Tree Well drilling program was designed to investigate extensions of mineralisation to north of current mineralised footprint.
- Delta 2 RC drilling targeted historic anomalous AC drilling over a +500m strike length
- Shallow RC drilling (12 holes) undertaken at Alpha West to assess open pit opportunities
- Aircore program completed south of the Queen of Hearts prospect at Brightstar South to generate anomalies for future drill testing.

Brightstar Resources Limited (ASX: BTR) (**Brightstar** or the **Company**) is pleased to announce that it has successfully completed three RC drilling programs at Cork Tree Well, Delta 2 and Alpha projects and a short aircore program at Queen of Hearts South (Brightstar South project area). All of these prospects are located in the Laverton Gold belt of Western Australia, within 70km of the Brightstar processing mill on care & maintenance south-east of the Laverton township.

**COMPANY DIRECTORS
AND MANAGEMENT**

William Hobba
Managing Director

Yongji Duan
Chairman

Josh Hunt
Non-Executive Director

Luke Wang
**Financial Controller
Company Secretary**



Blue Spec Drilling at sunset at Cork Tree Well.

Commenting on the program, Managing Director, Mr Hobba, said: *“Blue Spec Drilling has delivered exceptional sample integrity throughout the program at a consistently high penetration rate. The CTW and Delta 2 programs were successfully completed, and an additional 12 holes were able to be drilled at Alpha West to test for opportunities to mine a shallow open pit where previous anomalous drilling has been recorded. The aircore will continue to progress our early-stage exploration development in the southern part of the Brightstar Resources tenure. We look forward to sharing the results from these programs as they become available.”*

Discussion of Results

The Delta 2 RC drill program (12 holes for 1,782 metres) is the first bedrock drilling undertaken in this area with only historic aircore previously completed through this part of the tenure. The program has been completed in full and should provide an effective test of primary material adjacent to regolith anomalism identified in the previous aircore drilling.

At Cork Tree Well (32 holes for 4,758 metres), drillholes planned to test the poorly resolved sections of the geological model between the northern end of the open pits and the parallel lodes of gold anomalism have been completed. Sand and swelling clays had the potential to impact on sample quality on two holes, therefore BTRRC174 and BTRRC175 were both ended early. Brightstar will investigate alternate methods for testing the northern parts of this deposit in the future.

The opportunity to test the western end of the Alpha trend provided by the shortening of the Cork Tree Well program meant that a short program of shallow RC holes (12 holes for 1,278 metres) could be completed over the previously identified anomaly at Alpha West. The historic drilling has shown indications of near surface mineralisation that may support a small open pit in this area 800m north-west of the current pit and provide a second access to deeper mineralisation should it be confirmed as an opportunity for underground mining in the future.

An aircore program (25 holes for 991 metres) was completed south of the Queen of Hearts historical mining prospect, designed to test for anomalous gold along strike to the south of the historic workings and to generate new targets for future exploration in the southern tenements close to the Brightstar milling facility.

Figure 1 below indicates the prospect locations for the reported drilling in this announcement.

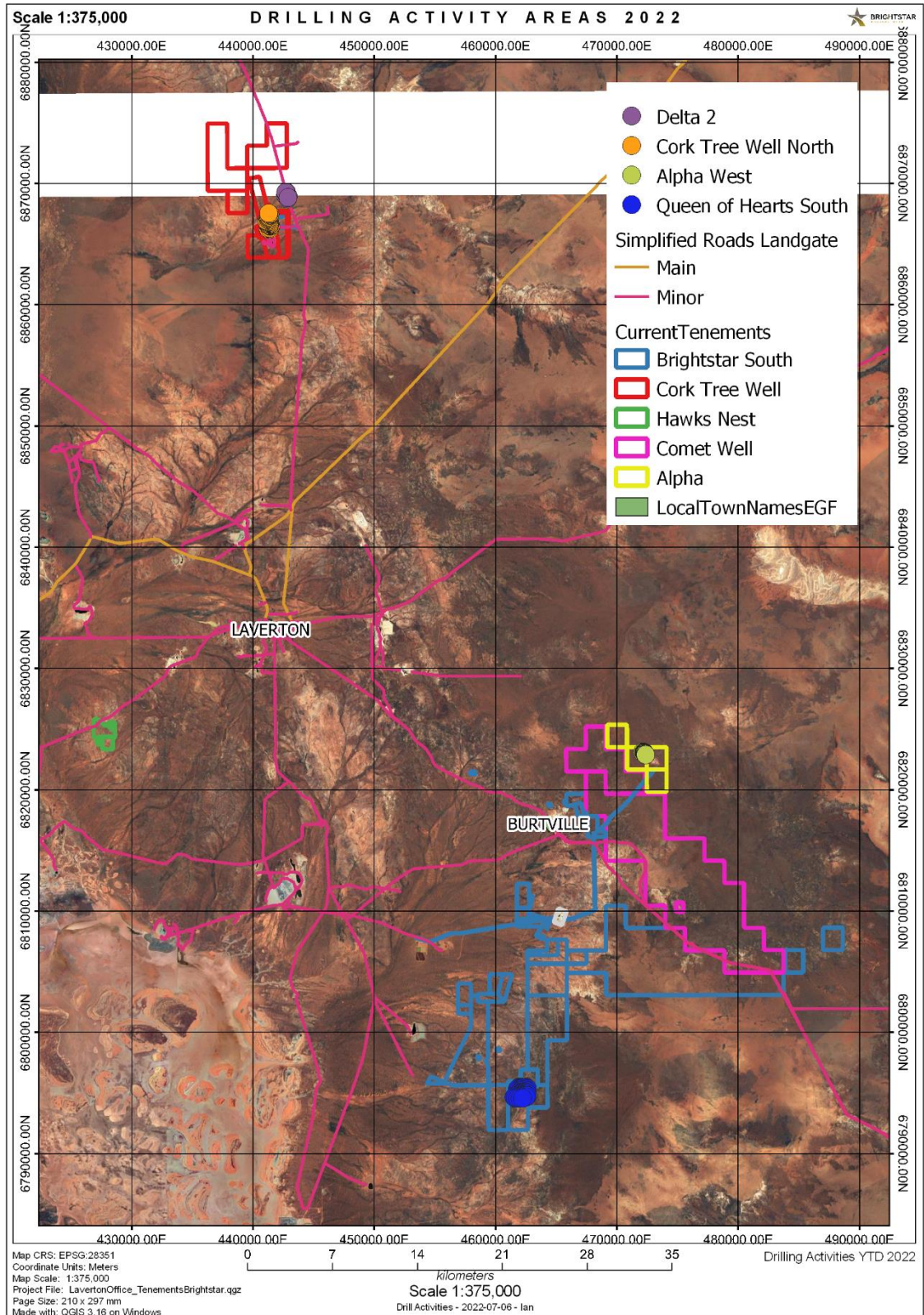


Figure 1: Plan of RC drilling locations in recent program.

Next Steps

The majority of planned drilling program has been successfully completed. Where holes were not successfully completed further investigations into alternate drilling techniques will be undertaken. Assay results will be reported as they come to hand.

Further analysis and interpretation will be undertaken when all assays have been received and QA/QC ratified. These new results will then feed into a revised model for Cork Tree Well and delineate further drilling targets for follow up exploration at the other prospects.

This ASX announcement has been approved by the Managing Director on behalf of the board of Brightstar.

For further information, please contact:

William Hobba

Managing Director

Phone: +61 8 9277 6008

Email: BillH@brightstarresources.com.au

Ian Pegg

Exploration Manager

Phone: +61 8 9277 6008

Email: IanP@brightstarresources.com.au

COMPETENT PERSON'S STATEMENT

The information presented here relating to exploration of the Cork Tree Well (previously Delta), Delta 2, and Alpha deposits is based on information compiled by Mr Ian Pegg B App Sci (Hons), who is a Member of the Australian Institute of Geoscientists (AIG) and has sufficient experience which is relevant to the style of mineralisation and type of deposit under consideration and to the activity he has undertaken to qualify as a "Competent Person" as that term is defined in the 2012 Edition of the "Australasian Code of Reporting of Exploration Results, Mineral Resources and Ore Reserves (JORC Code 2012)". Mr Pegg consents to the inclusion in this announcement of the matters based on his information in the form and context in which it appears. Mr Pegg is employed by Brightstar Resources Ltd.