



TECHGEN METALS
LIMITED

INVESTOR PRESENTATION

Exploration of sustainable and precious metals for the future

JULY 2022 – ASX: TG1



Disclaimer

The information contained in this presentation has been prepared by TechGen Metals Ltd (ACN 624 721 035) (Company).

This presentation is not an offer, invitation, solicitation or other recommendation with respect to the subscription for, purchase or sale of any securities in the Company. This presentation has been made available for information purposes only and does not constitute a prospectus, short form prospectus, profile statement or offer information statement nor does it constitute investment or financial product advice (nor taxation, accounting or legal advice) and it is not intended to be used as the basis for making an investment decision.

This presentation does not include all available information and should not be used in isolation as a basis to invest in the Company. This presentation is not subject to the disclosure requirements affecting disclosure documents under Chapter 6D of the Corporations Act 2001 (Cth). The information in this presentation may not be complete and may be changed, modified or amended at any time by the Company, and is not intended to, and does not, constitute representations and warranties of the Company.

The Company does not have a significant operating history on which to base an evaluation of its business and prospects. Therefore, the information contained in this presentation is inherently speculative.

The information contained in this presentation is strictly confidential and you must not disclose it to any other person. While the information contained in this presentation has been prepared in good faith, neither the Company or any of its directors, officers, agents, employees or advisors give any representation or warranty, express or implied, as to the fairness, accuracy, completeness or correctness of the information, opinions and conclusions contained in this presentation. Accordingly, to the maximum extent permitted by law, none of the Company, its directors, employees or agents, advisors, nor any other person accepts any liability whether direct or indirect, express or limited, contractual, tortious, statutory or otherwise, in respect of, the accuracy or completeness of the information or for any of the opinions contained in this presentation or for any errors, omissions or misstatements or for any loss, howsoever arising, from the use of this presentation.

This presentation may contain statements that may be deemed “forward looking statements”. Risks, uncertainties and other factors, many of which are outside the control of the Company can cause actual results to differ materially from such statements. Such risks and uncertainties include, but are not limited to, exploration risks, tenure and access risks and commodity price volatility and exchange rate risks, as well as political and operational risks, and governmental regulation and judicial outcomes.

The Company makes no undertaking to update or revise such statements, but has made every endeavour to ensure that they are fair and reasonable at the time of making the presentation.

Investors are cautioned that any forward-looking statements are not guarantees of future performance and that actual results or developments may differ materially from those projected in any forward-looking statements made.

Authorisation - For the purpose of Listing Rule 15.5, this announcement has been authorised for release by the Board of Directors of TechGen Metals Limited.

Competent Person Statement - The information in this announcement that relates to Exploration Results is based on and fairly represents information compiled and reviewed by Andrew Jones, a Competent Person who is a member of the Australasian Institute of Mining and Metallurgy (AusIMM). Andrew Jones is employed as a Director of TechGen Metals Limited. Andrew Jones has sufficient experience that is relevant to the style of mineralisation and type of deposits under consideration and to the activity being undertaken to qualify as a Competent Person as defined in the 2012 edition of the Australasian Code of Reporting of Exploration Results, Mineral Resources and Ore Reserves. Andrew Jones consents to the inclusion in this announcement of the matters based on his work in the form and context in which it appears.



Corporate Structure

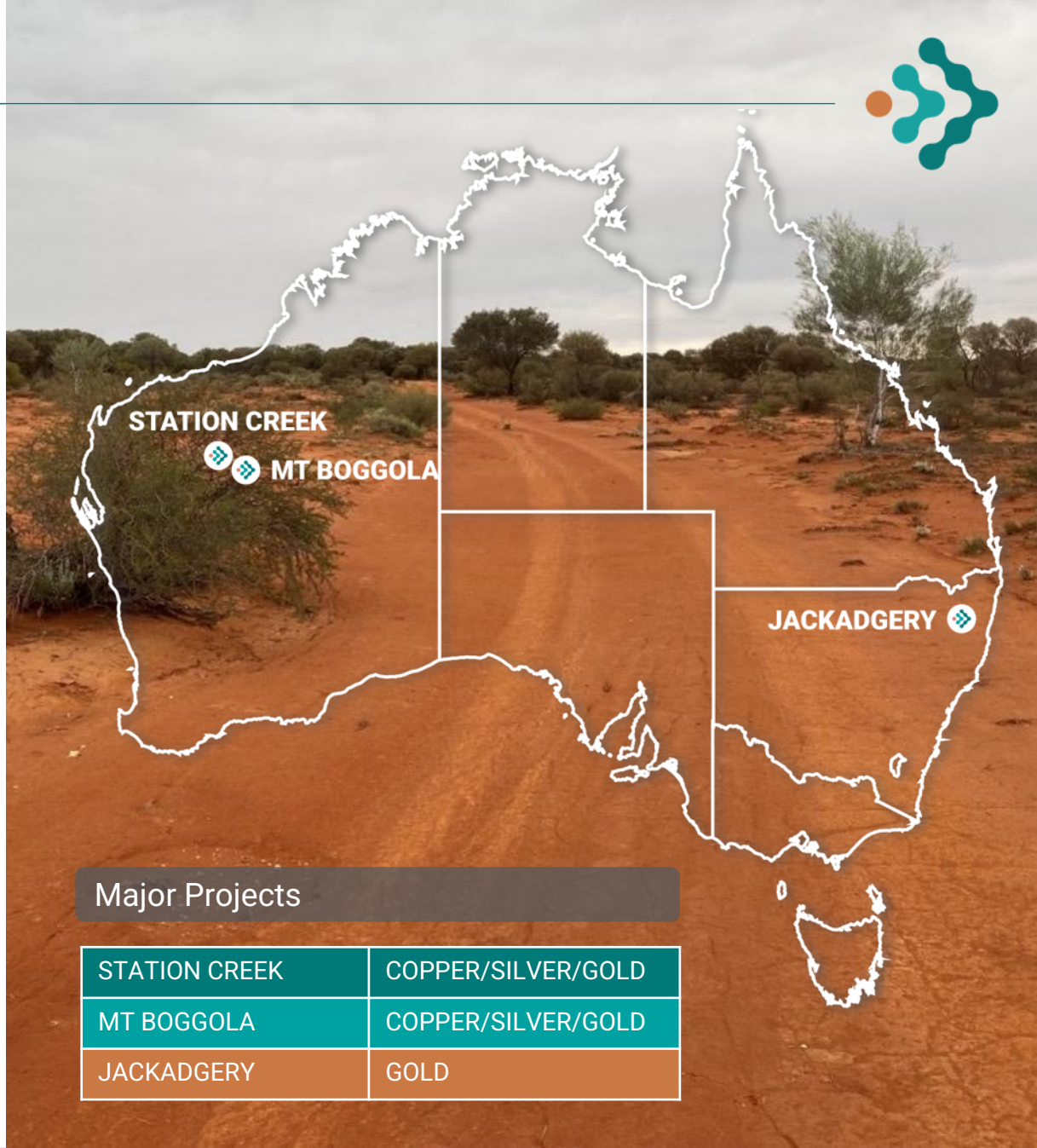
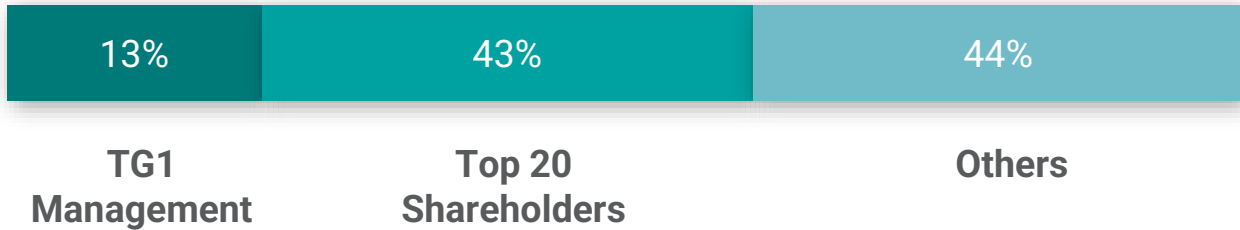
53m
Shares on Issue

\$6.6m
Market Capitalisation
(15 July 2022)

\$2m
Cash at bank
(31 May 2022)

18m
Options on Issue

Shareholder Structure



Major Projects

STATION CREEK	COPPER/SILVER/GOLD
MT BOGGOLA	COPPER/SILVER/GOLD
JACKADGERY	GOLD

Investment Highlights

01 Copper is Critical to Green Energy

Copper is the most cost effective and superior thermal and electrical conductor that is 100% recyclable, used in electric vehicles, solar and other green energy infrastructure. Demand for copper continues to increase with growing global investment in green capex.

02 First Mover Advantage in Highly Prospective Ashburton Basin, Western Australia

Ashburton Projects Mt Boggola and Station Creek cherry picked with historic workings, wide spread anomalism and no modern geophysics.

03 The Big 3 Projects – Massive Copper, Silver & Gold Potential

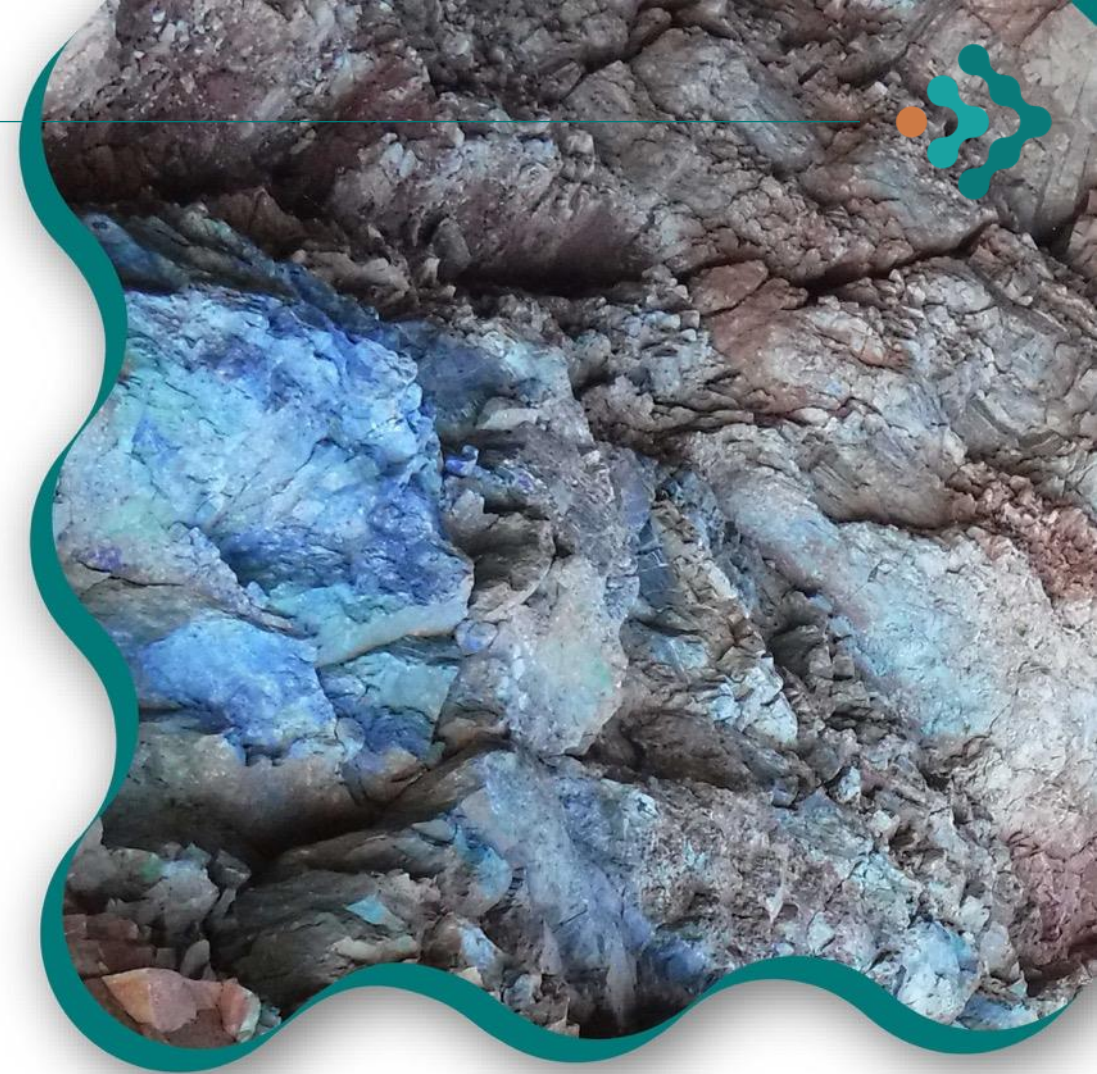
Text book type Geology, Geophysics and Geochemistry aligned for a Tier 1 discovery in three locations - Mt Boggola, Station Creek and Jackadgery.

04 Exciting Gold Potential at Jackadgery Project, NSW

Walk-up and fully permitted drill targets, never drilled before with multiple phases of historic workings, broad trench anomaly with coincident IP chargeability.

05 Low Shares on Issue (53m), Low Enterprise Value

Exceptional leverage for growth on investment with the Big 3 Drilling campaigns about to commence.





Board & Management



MAJA MCGUIRE
NON-EXECUTIVE CHAIR

- Consultant lawyer with 15 years' experience in the provision of corporate and compliance advice to ASX listed companies. Holds LLB and BComm qualifications from the University of Western Australia.
- Experience includes working with listed companies as a non-executive director, general counsel and company secretary (ASX:AVR, ASX:AJX) and in top-tier private practice (Clayton Utz).
- Currently Non-Executive Director of Kuniko Limited (ASX:KNI), OliveX Holdings Ltd (ASX:OLX), LTR Pharma Limited & Stormeur Limited.



ASHLEY HOOD
MANAGING DIRECTOR

- Exploration and corporate experience of more than 17 years' in the mining and exploration industry with junior and major mining companies, listing several ASX exploration companies.
- Specialises in project and people management, native title negotiations, project due diligence, acquisitions and has a portfolio of family held mineral and precious metals projects.
- Currently Non-Executive Director of Rafaella Resources Limited (ASX:RFR).



ANDREW JONES
EXECUTIVE DIRECTOR

- More than 20 years' experience as a geologist, having worked throughout Australia, Africa and South America.
- Holds a B.App.Sci degree from RMIT University and Honors and MSc degrees from the University of Tasmania.
- Specialises in gold, copper, nickel and cobalt. Member of both the Australian Institute of Geoscientists (AIG) and the Australasian Institute of Mining and Metallurgy (AusIMM).



RICK GOVENDOR
CO-SEC/CFO/NED

- More than 20 years' experience as a financial professional with senior leadership experience in various resources and industrial businesses.
- CPA qualified with an MBA (UQ). Member of the Chartered Institute of Secretaries and holds a Bachelor of Commerce.
- ASX listed company experience, including Meridian Minerals Limited, Consolidated Rutile Ltd and Cool or Cosy Ltd, and was the Australasian CFO for the Penske Automotive Group (NYSE: PAG).



PETER SPITALNY
GEOLOGIST

- Member of the AusIMM and has acted for several publicly listed companies as a Competent Person, as defined by the JORC Code (2012). Has held board positions in public companies.
- Senior exploration experience spans 30 years' exploration experience, focused upon gold and expert in lithium pegmatites. Has significant experience with manganese, nickel, copper.



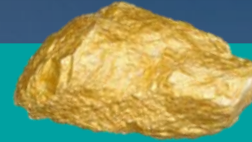
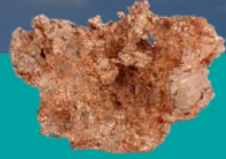
RUSSELL MORTIMER
GEOPHYSIST

- Experienced in the application of geophysical techniques in mineral exploration for gold, platinum group elements (PGE's) and a broad range of base metals including, iron ore, nickel, copper, manganese, graphite as well as mineral sands and uranium.
- Experienced in geophysical exploration for nickel/copper sulphides and other base metals and is directly responsible for a number of well renowned geophysical discoveries.



Sustainable & Precious Metals Focus

Copper is the new oil



Gold market is strong

↑ 16%

Copper Demand by 2030¹

>6m Tonnes

Copper demand will outstrip supply by 2030

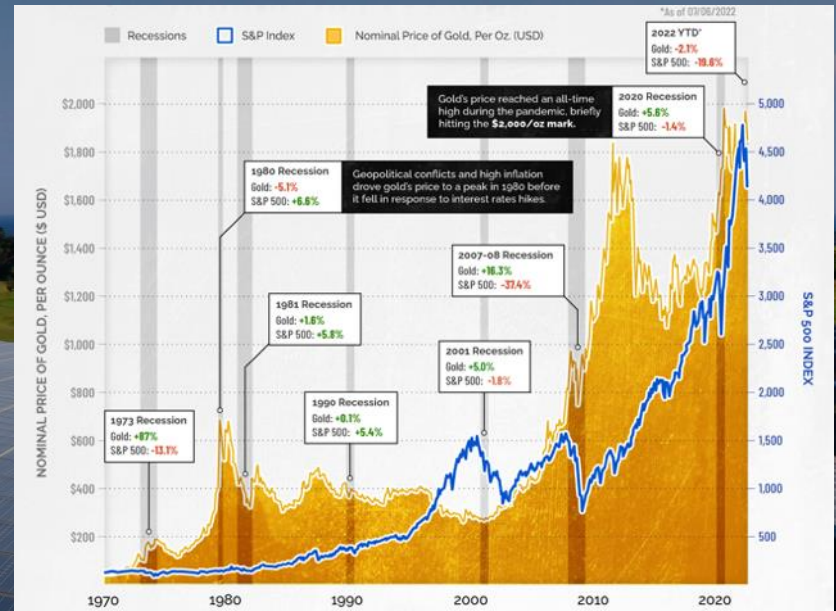
4x

Copper needed by electric cars compared to a standard car

>25%

of copper consumption will be attributed to green energy transition by 2050²

Green drivers and improved efficiencies pushing up demand - electrification, electric vehicles, renewable power (wind, solar).



Gold continues to perform as a safe haven store of value³

Gold price tends to rise during times of economic volatility

1. <https://www.rystadenergy.com/newsevents/news/press-releases/copper-supply-deficit-of-6-million-tons-by-2030-threatens-renewables-evs-as-investment-lags-demand/>
 2. <https://www.fastmarkets.com/insights/global-copper-market-drivers-push-and-pull>

3 <https://www.kitco.com/commentaries/2022-07-08/Gold-holds-in-worst-first-half-in-decades.html>
 Graph: <https://elements.visualcapitalist.com/gold-during-recessions/>



Ashburton Basin - Station Creek | Copper – Silver – Gold

Stunning high-grade Cu and Ag confirmed in rock chips

Location

- The Station Creek Project is located 70km to the southwest of Paraburdoo within the Ashburton Region of Western Australia. The Project is comprised of a single granted Exploration Licence spanning 54km².

Historic

- Historic copper workings and widespread copper occurrences.
- Minimal exploration completed to date with no modern geophysics.
- Limited drilling previously targeting basin margins within the Ashburton and Capricorn Formations.



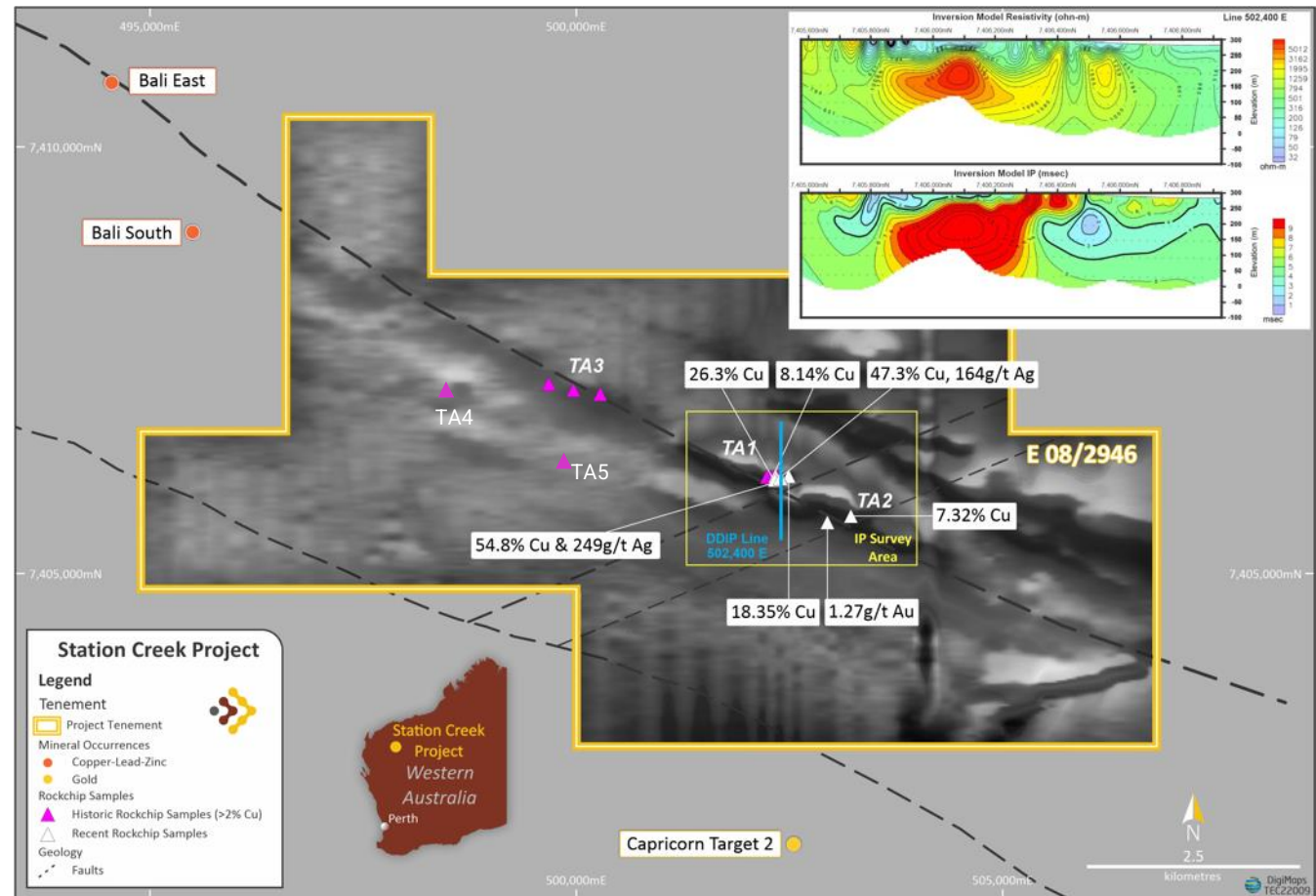


Ashburton Basin - Station Creek | Copper – Silver – Gold

Stunning high-grade Cu and Ag confirmed in rock chips

New Geophysics & Geochemistry

- Recently completed rock chip sampling returned copper results exceeding 50%, TA1 prospect.
- Neighboring high-grade Bali prospects share the same fault zone as TechGen’s TA1, TA2 and TA3 prospects.
- Impressive high grade rock chips with peak of **54.8% Cu, 257g/t Ag and 8.8g/t Au** taken within a 10km long shear zone.
- Outcropping copper zones (Malachite, Azurite, Djurleite, Brochantite, Atacamite and Olivenite).
- TA1 - splayed magnetic high with coincident IP and exceptionally high copper and silver extending over +250m and open along strike.
- TA2 - magnetic high, chargeability anomaly, fault controlled at the same location as a previous **7.32% Cu** rock chip.
- New Targets TA3 – TA5 - historic copper workings and or shear hosted copper gossans.
- No previous drilling or geophysics at TA1 to TA5.





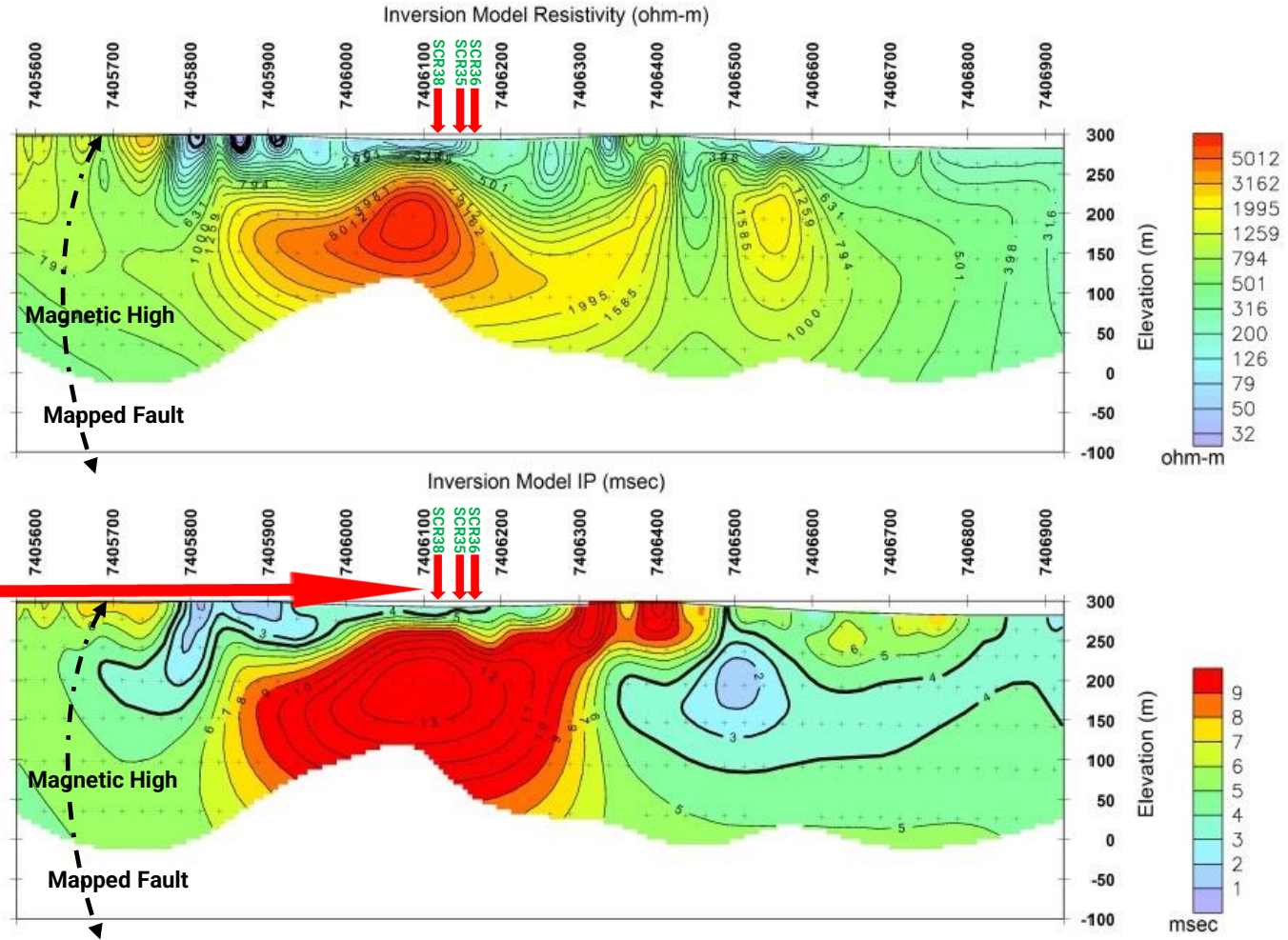
Ashburton Basin - Station Creek | Copper – Silver – Gold @ TA1

Stunning high-grade Cu and Ag confirmed in rock chip

Strategic Highlights & Next Steps

- Gradient Array IP has identified priority chargeability anomalies (TA1 & TA2 Prospects).
- TA1 Dipole Dipole IP anomaly is approximately 60m below the high-grade copper & silver rock chip samples (Peak 54.8% Cu & 249g/t Ag).
- Stacked shear zones containing high-grade copper rock chips over +250m and open along a NE striking crosscutting fault above TA1.
- Fully permitted for RC Drilling in Q3 2022.

- ↓ **SCR35**
 54.8% Cu / 249g/t Ag / 0.271g/t Au
- ↓ **SCR36**
 47.3% Cu / 164g/t Ag / 0.428g/t Au
- ↓ **SCR38**
 26.3% Cu / 2.76g/t Ag / 0.151g/t Au





Ashburton Basin - Station Creek | Copper – Silver – Gold @ TA1

Stunning high-grade Cu and Ag confirmed in rock chips

Strategic Highlights

- Ground DDIP geophysics has identified two targets, TA1 & TA2, coincident with impressive outcropping copper gossan mineralisation.
- Stunning high-grade **copper** of **54.8%** and **silver** of **249g/t** confirmed in rock chip (above TA1).
- NE fault zone identified, and high-grade Cu mineralisation extended to >250m in length (TA1).

Sample	Easting	Northing	Cu %	Ag g/t	Au g/t	Comments
SCR23	502515	7406138	17.35	28.9	0.313	Malachite
SCR24	502560	7406260	2.44	0.32	0.053	Malachite
SCR35	502381	7406130	54.8	249	0.271	Malachite
SCR36	502396	7406125	47.3	164	0.428	Malachite
SCR37	502480	7406157	18.35	9.3	0.436	Malachite
SCR38	502318	7406112	26.3	2.5	0.151	Malachite
SCR39	502324	7406158	8.14	0.9	0.222	Malachite





Ashburton Basin - Station Creek | Copper – Silver – Gold Targets





Ashburton Basin - Mt Boggola | Copper - Gold - Silver Potential

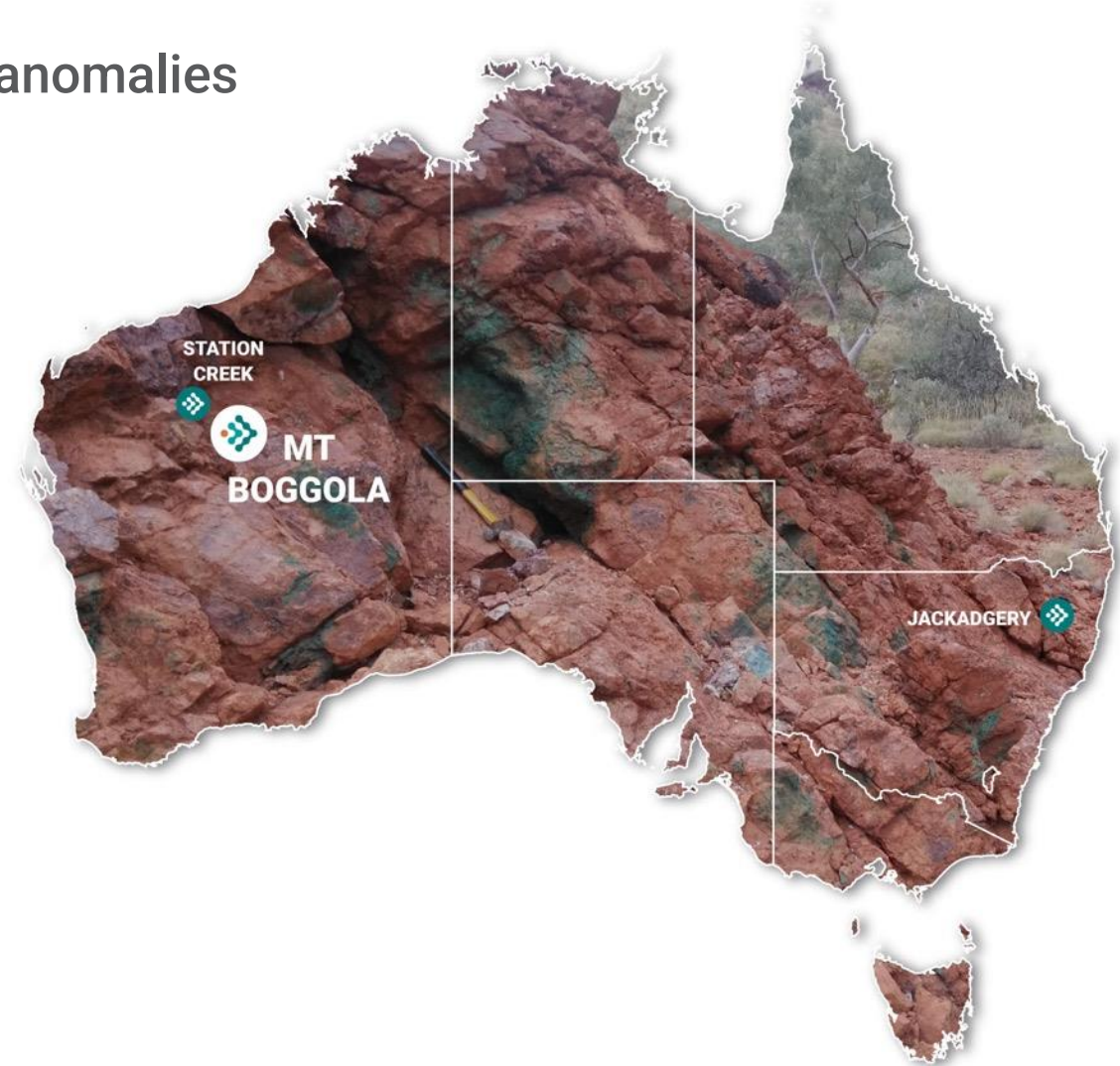
New drill targets with high grade copper around VTEM anomalies

Location

- The Mt Boggola Project is located 60km to the south of Paraburdoo within the Ashburton Region of Western Australia. The Project comprises of four Exploration Licences spanning 352km² of highly prospective geology.

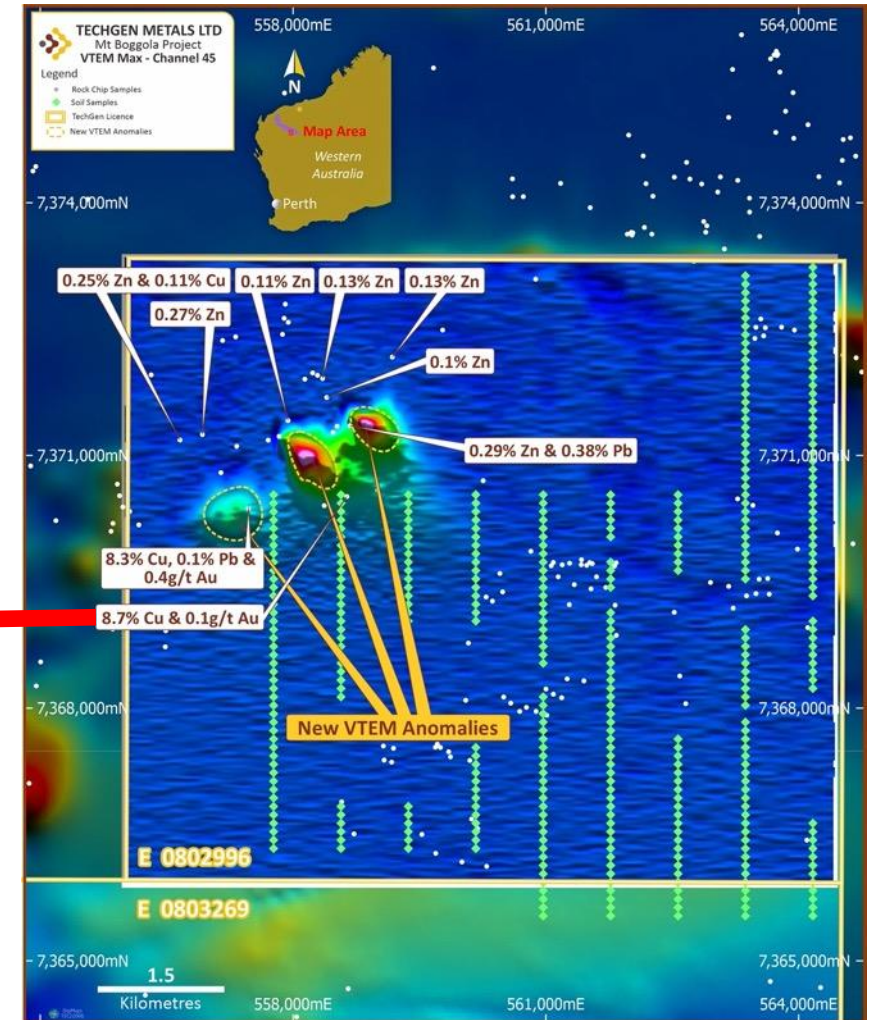
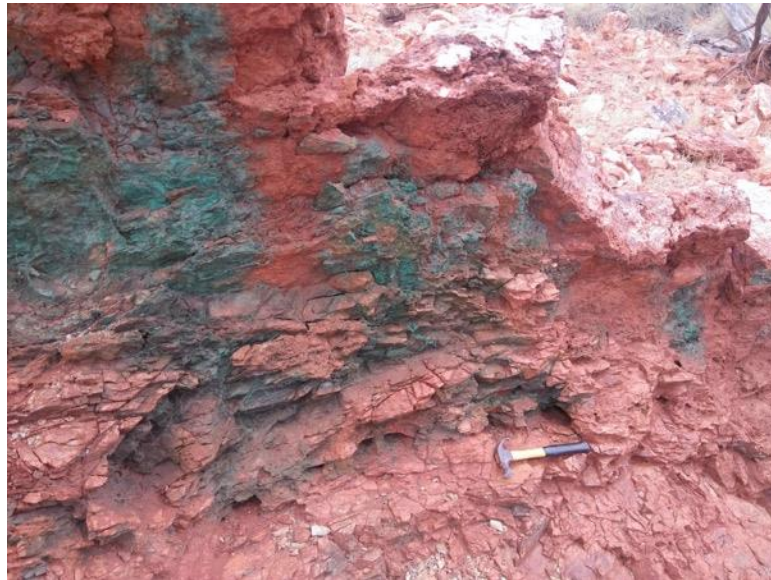
Historic

- Several malachite-rich shear zones and moderately dipping quartz breccia bodies were identified. Several of these exhibited significant gold and copper mineralisation.
- High grade rock chips from area with peaks of **43.1g/t gold, 119g/t silver & 68% copper**.
- Previous Newcrest drilling under malachite-quartz outcrops returned **4m @ 2.32% copper** from 12m (hole PB13) and **4m @ 1.56% copper** from 32m (hole PB09).
- No modern geophysics.





Ashburton Basin - Mt Boggola | Copper - Gold - Silver Potential



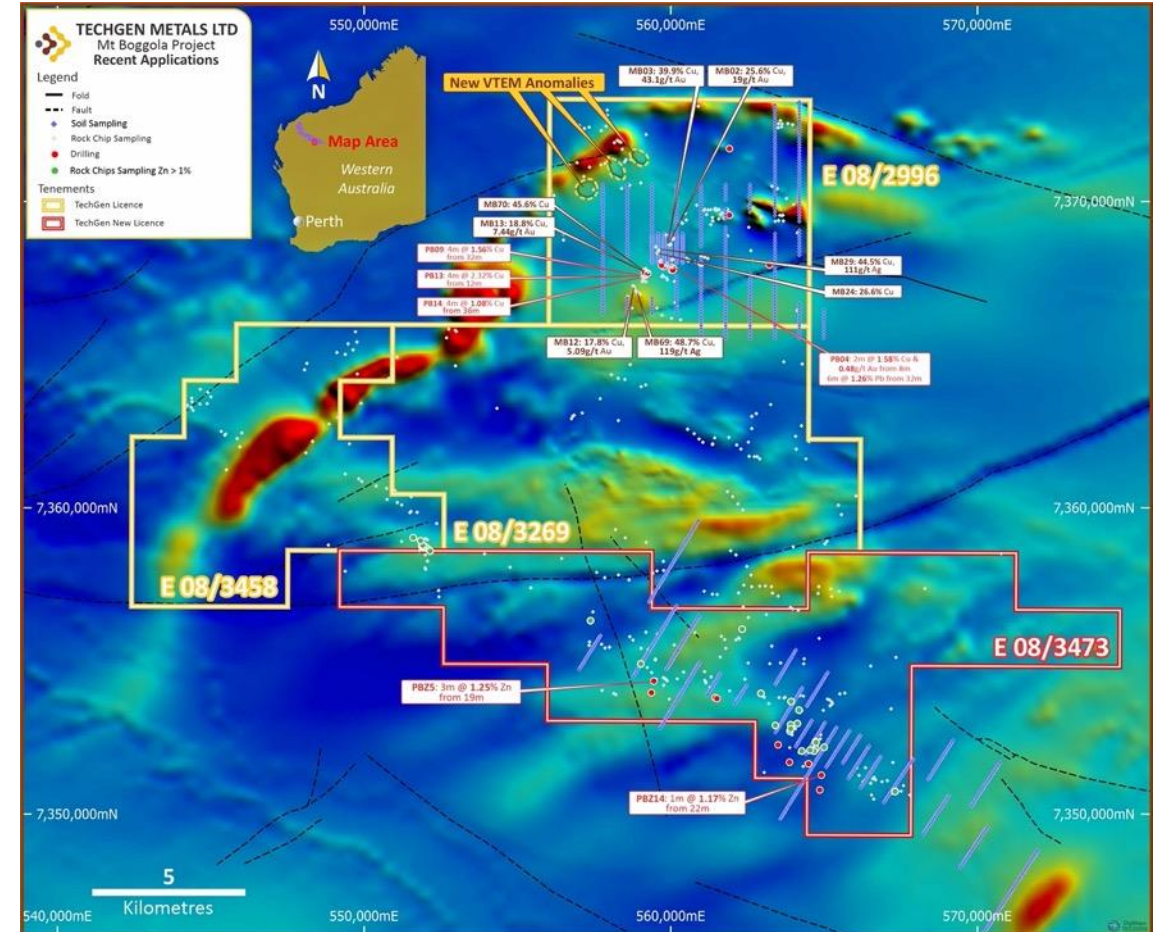


Ashburton Basin - Mt Boggola | Copper - Gold - Silver Potential

New drill targets with high grade copper around VTEM anomalies

New Geophysics and Next Steps

- No modern geophysics over the project area until a helicopter VTEM survey in May 2021 over E08/2996.
- Ground fixed loop EM was completed in July 2021.
- Three new high quality discrete EM anomalies were modelled.
- EM anomalies are located in a favorable geological setting - basalts of submarine origin.
- The basalt and EM areas are newly identified and remain untested.
- High-grade rock chips of **8.7% copper** & **8.3% copper** located adjacent to EM conductors.
- \$150K Exploration Incentive Scheme co-funding awarded from the WA State Government.
- Fully permitted for RC Drilling in Q3 2022.





New England Orogen – Jackadgery | Gold

Never drilled, walk-up, fully permitted drill targets

Location

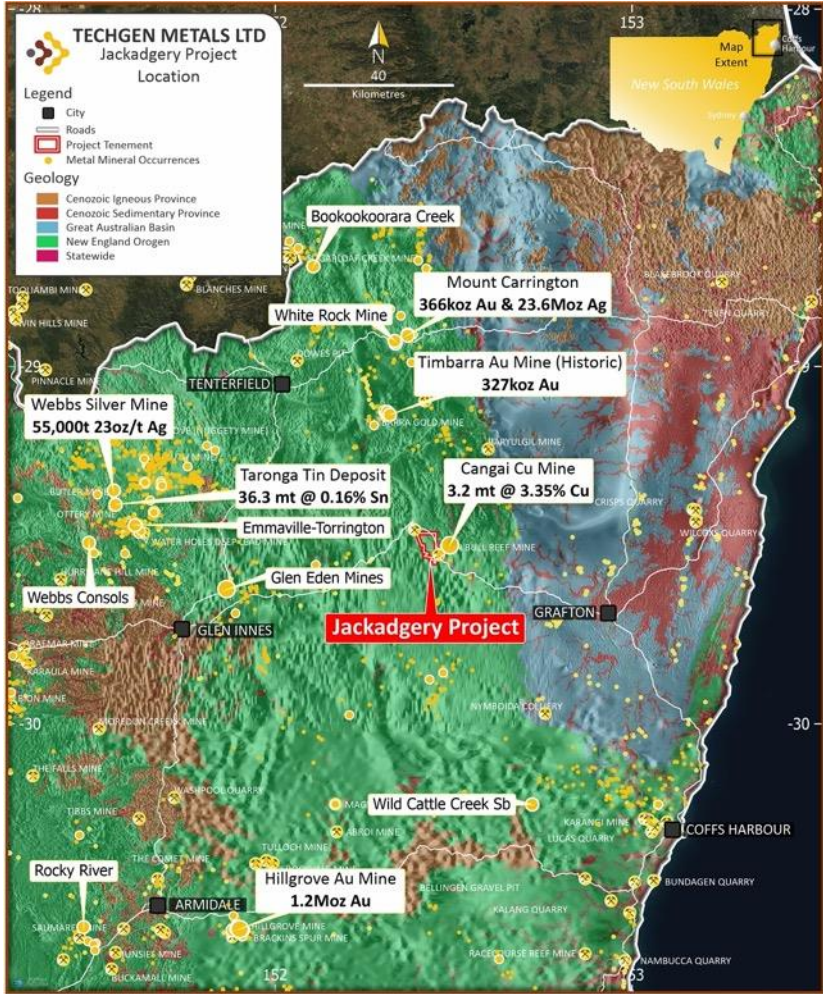
- The Jackadgery Gold Project is located east of Glen Innes in northern New South Wales within the New England Orogen. The project covers 32km².

Acquisition

- Acquisition comprises the purchase of 100% interest in tenement EL9121 and the assignment of an option to acquire a 90% interest in tenement EL8389.

Historic

- The John Bull Gold Shafts were mined in the mid 1880's.
- Two areas of gold sluicing worked in the 1940's.
- Kennecott & Southern Goldfields completed a trench in the 1980's that returned: **160m @ 1.2g/t gold**, with impressive higher-grade intervals including **5m @ 18.0g/t gold** and **5m @ 7.1g/t gold**.
- Since gold was first discovered 137 years ago, the project remains undrilled today.





New England Orogen – Jackadgery | Gold

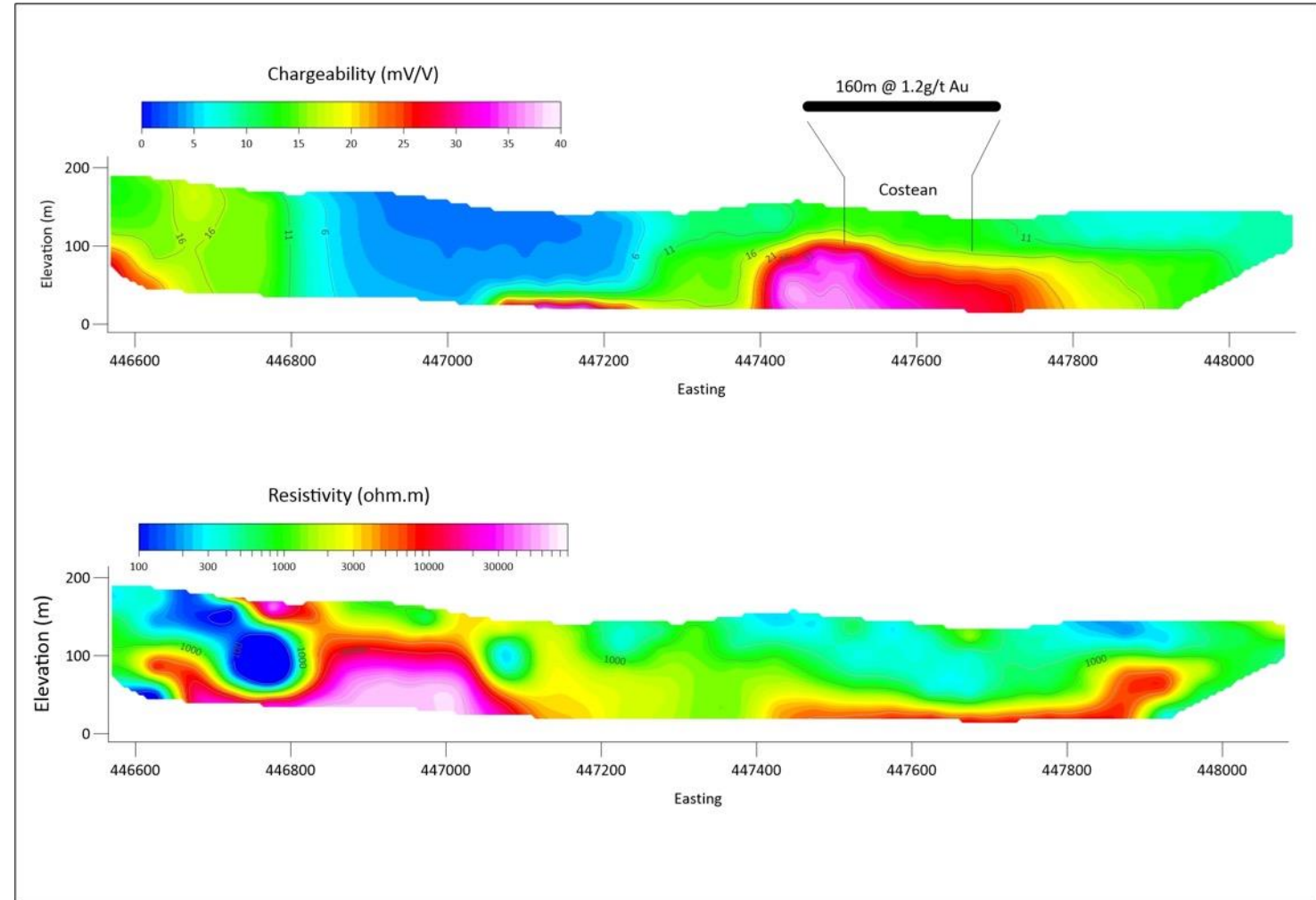
Width and high-grade gold potential

Recent Geophysics

- Induced Polarisation (DDIP) geophysical survey 2017 - 3 lines.
- Northern IP line completed over the **160m trench at 1.2g/t gold**.
- A strong chargeability high & resistivity high identified below the mineralised trench.

Interpreted Geology

- Possible orogenic or intrusion related gold systems.
- Gold-bearing quartz stockwork veins identified in the trench.



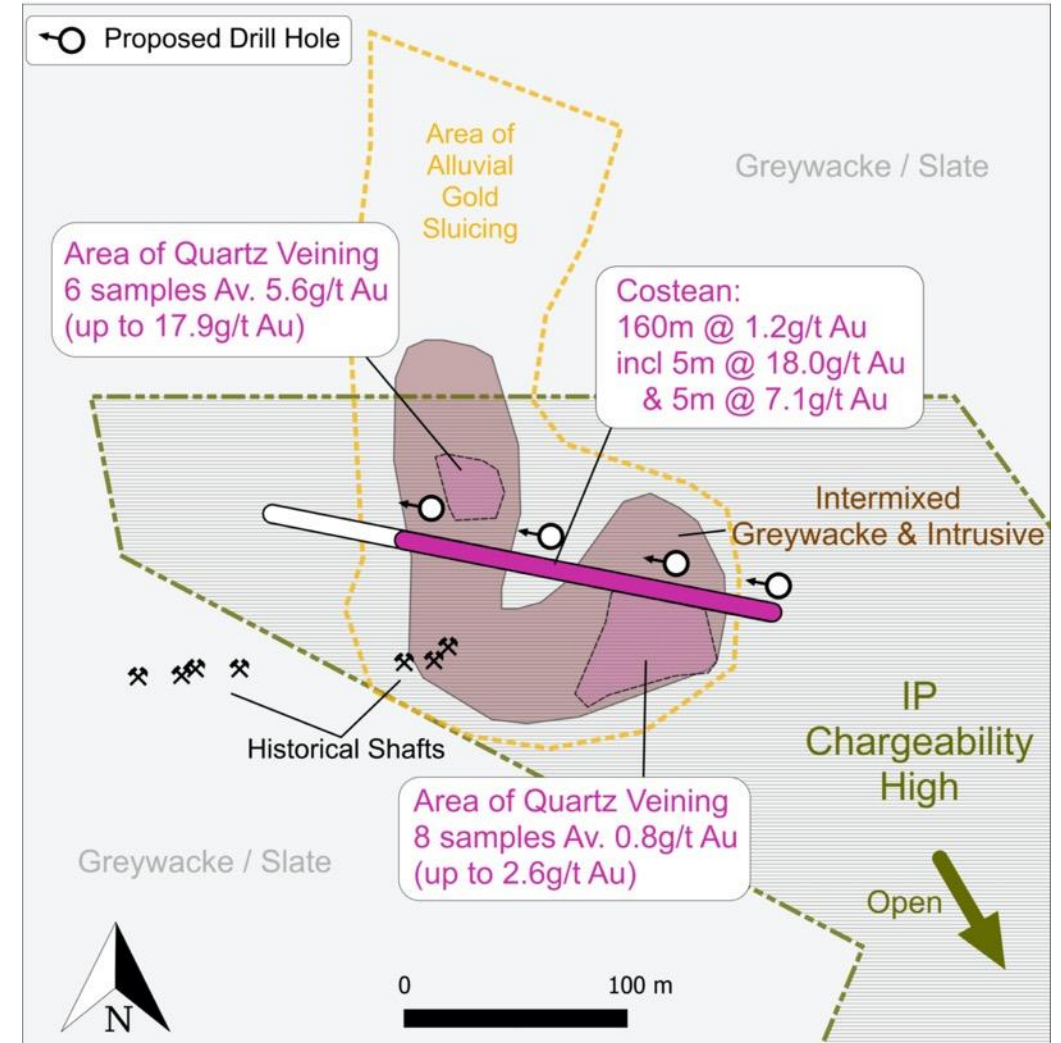


New England Orogen – Jackadgery | Gold

Width and high-grade gold potential

Drilling and Next Steps

- Fully permitted for RC drilling program.
- Drilling to test historic shafts, sluiced area, trench and the recent IP chargeability anomaly.
- First to drill test the project area with a maiden RC drilling program to commence Q3 2022.





New England Orogen – Jackadgery | Gold





Activity Timeline

	Q2 2022			Q3 2022			Q4 2022		
Project	Apr	May	Jun	Jul	Aug	Sep	Oct	Nov	Dec
Station Creek	IP Survey (completed)		Model IP	Mapping		Drill Testing		Assays	Drill Testing
Mt Boggola		Mapping	Heritage			Drill & Airborne VTEM	Assays	New EM Drill Testing	
NSW - Jackadgery		Acquisition	Model IP	Mapping	Drill		Assays	Stage 2 Drill Testing	



Investment Summary

The Big 3 Projects

All three projects contain highly desired textbook targeting in Geology, Geophysics & Geochemistry.

First to Drill

Huge leverage to upside as all targets at the Big 3 remain untested to date. Low shares on issue.

Q3 2022 Drilling Campaign

Rigs booked, drill permits complete, technical teams assembled. Maiden RC campaigns about to commence.

Mt Boggola Copper / Gold / Silver

Three recently identified strong and discrete bedrock VTEM anomalies modelled.

Station Creek Copper / Silver / Gold

Key targets TA1 & TA2: Geophysics (IP & magnetics), Geology (faulting & crosscutting faults) & Geochemistry (high grade Cu, Ag & +/- Au).

Jackadgery – Gold

Multiple historical mining activities from shafts in the 1880's, alluvial gold sluicing in the 1940's and trenching done in the 1980's, producing or proving high grade gold. An amazing opportunity awaits, no historical drilling to date.





TECHGEN METALS
LIMITED

Contact Details

ASHLEY HOOD

MANAGING DIRECTOR

E: ashley.hood@techgenmetals.com.au

P: 0427 268 999

ANDREW JONES

TECHNICAL DIRECTOR

E: andrew.jones@techgenmetals.com.au

P: 0439 994 004

ADDRESS:

683 Murray Street
West Perth WA 6005

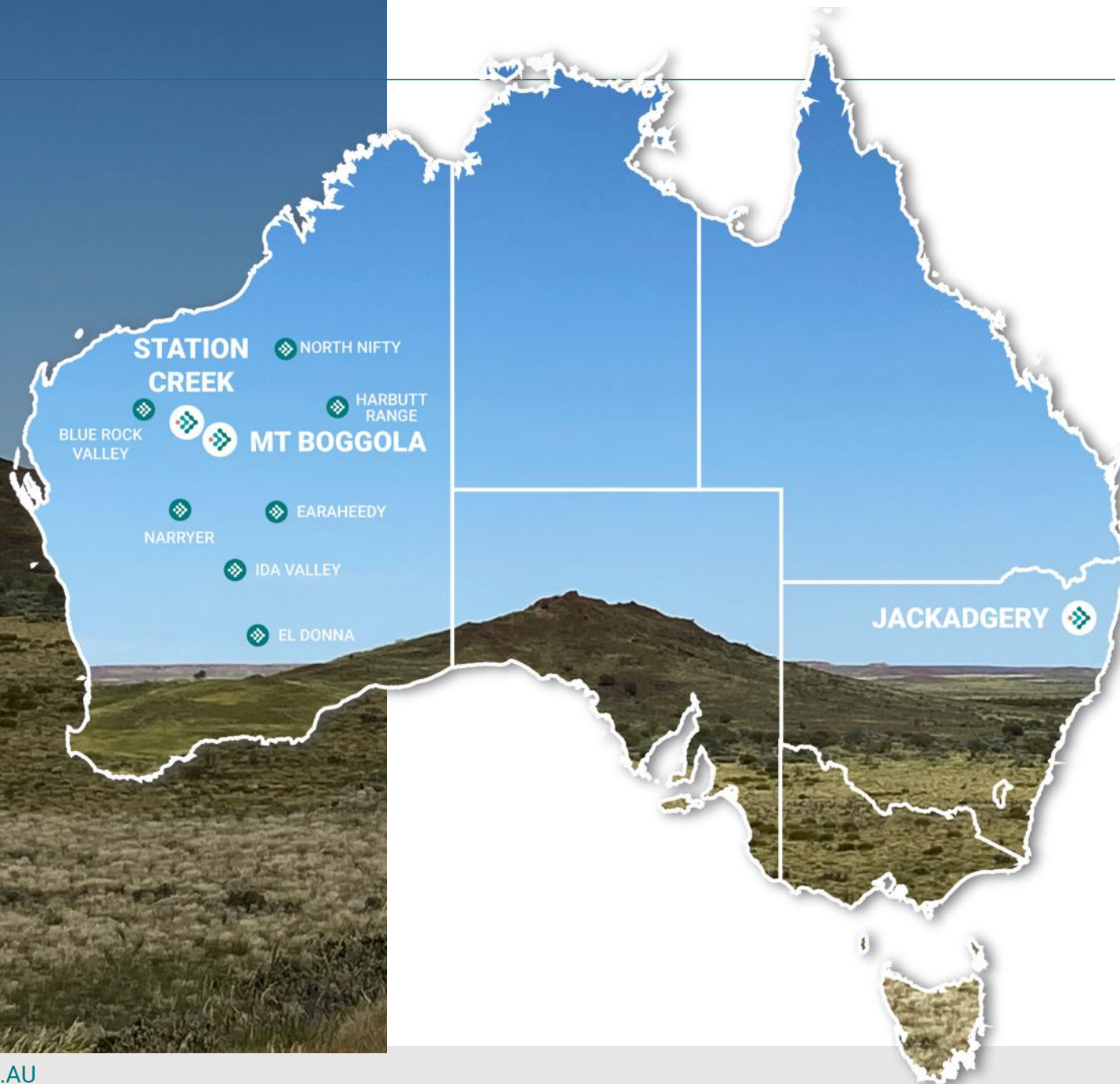
Telephone: +61 8 6557 6606

Email: admin@techgenmetals.com.au

W: techgenmetals.com.au



APPENDICES

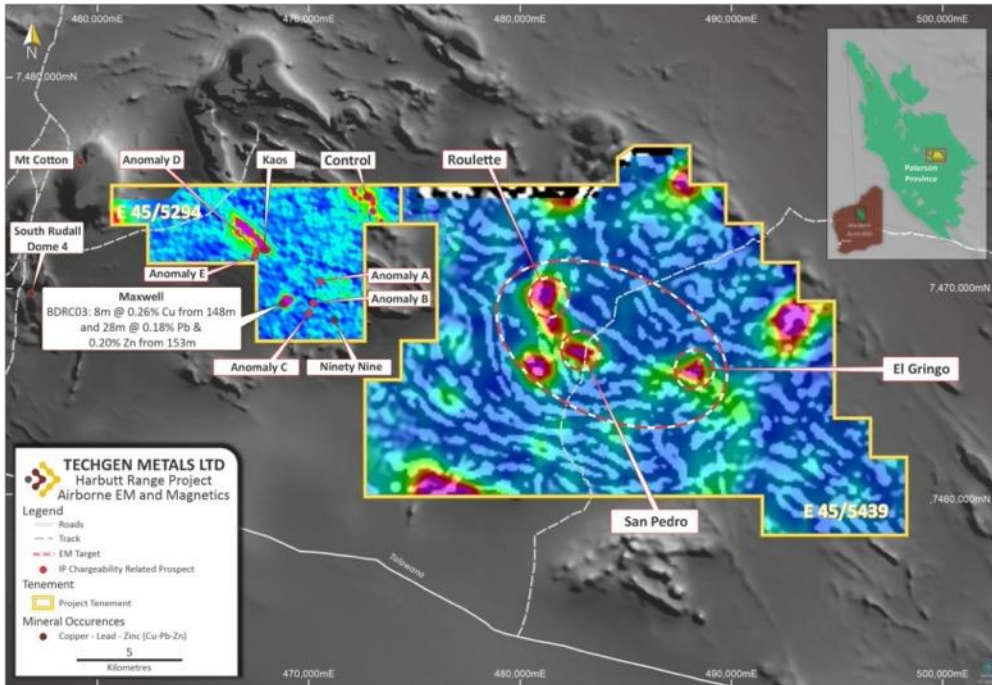




Other Projects

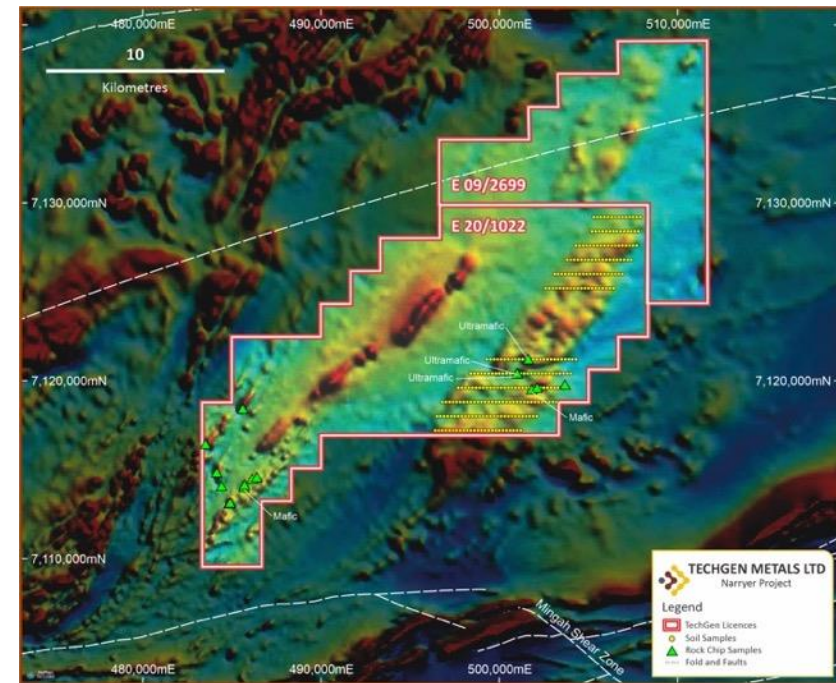
Harbutt Range

- The Harbutt Range Project is located 320km east of the town of Newman on the edge of the Great Sandy Desert in the Eastern Pilbara Region.
- The Project comprises two granted Exploration Licences, namely E45/5294 and E45/5439. The Harbutt Range Project lies within the Rudall Complex of the Proterozoic-aged Paterson Orogen.



Narryer | Ni-Cu-PGE

- The Narryer Project consists of Exploration Licences E20/1022 & E09/2699 covering an area of 379km², located 650km north of Perth.
- The western edge of the Yilgarn Craton represents the emerging under-explored West Yilgarn Ni-Cu-PGE Province (area of 1,200km x 100km.) The West Yilgarn Ni-Cu-PGE Province contains the Julimar Ni-Cu-PGE Deposit discovery in March 2020.

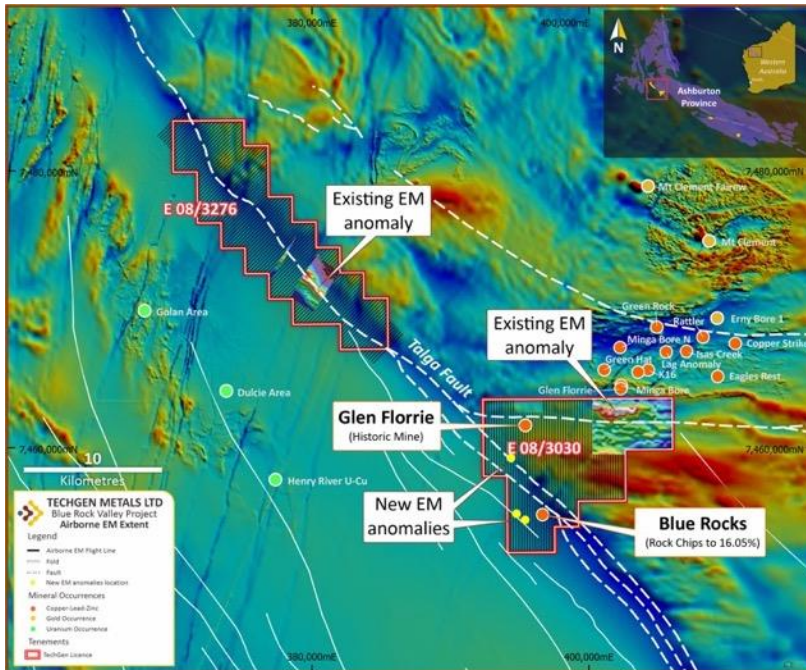




Other Projects

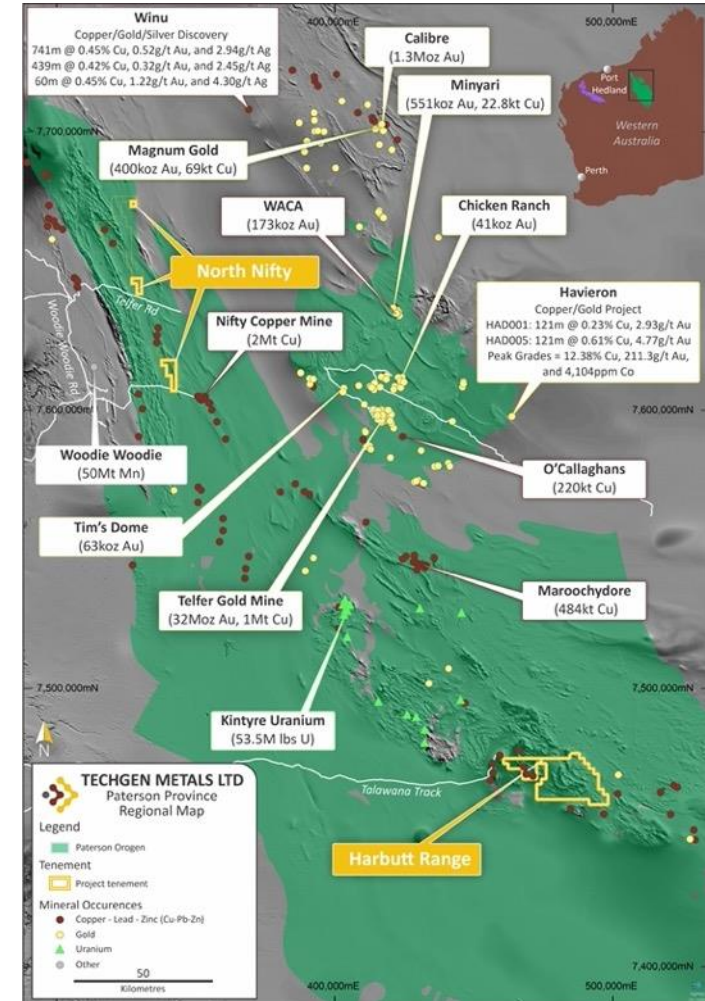
Blue Rock Valley | Cu

- The Blue Rock Valley Project is located 35km southeast of the Nanutarra Roadhouse and 175km west of Paraburdoo within the Ashburton Region.
- The Project comprises granted Exploration Licence E08/3030 and Exploration Licence Applications E08/3276, E08/3453 and E08/3454 covering an area of 880 km².



North Nifty

- The North Nifty Project is located approximately 250km northeast of Newman in the Eastern Pilbara Region.
- The Project comprises granted Exploration Licences E45/5506 and E45/5511 located within the Proterozoic-aged Paterson Orogen.

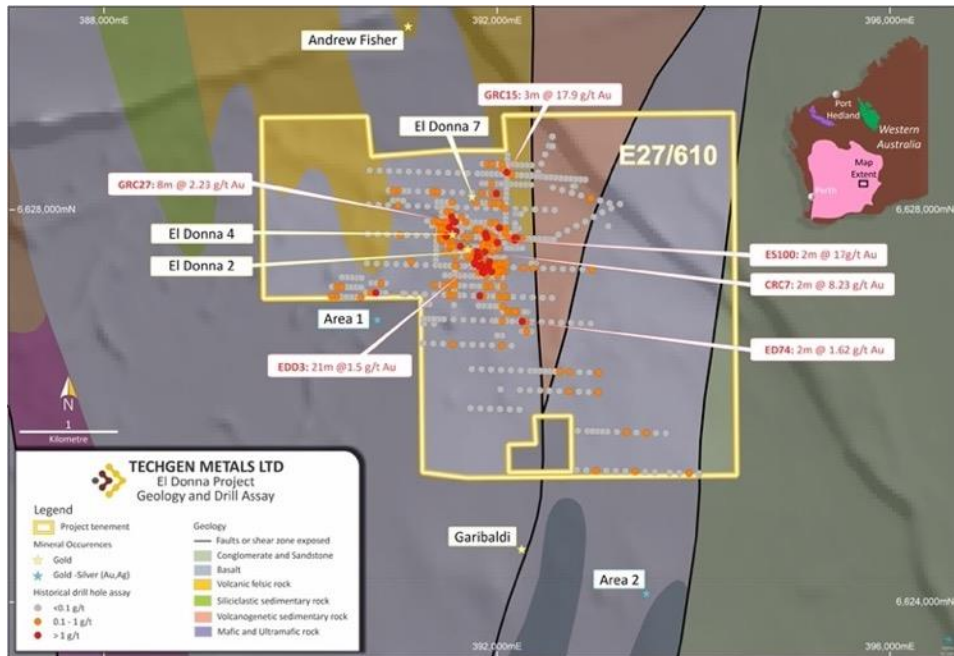




Other Projects

El Donna | Au

- The El Donna Project is located 50km northeast of Kalgoorlie in the Goldfields Region of Western Australia.
- The project area covers Archaean greenstone terrane that is considered prospective for hosting structurally controlled lode gold deposits and has been the subject of a reasonable level of previous exploration.



Earaheedy Basin | Pb-Zn

- The Earaheedy Project consists of five Exploration Licence Applications (E38/3706 - E38/3710) covering a vast combined area of 911km², located 850km northeast of Perth.
- The Earaheedy Basin contains the Chinook Zn-Pb-Ag discovery (April 2021).

