



**SIGNIFICANT URANIUM AND COPPER MINERALISATION
IDENTIFIED AT SURPRISE CREEK PROJECT
DURING FIELD PROGRAM**

HIGHLIGHTS

- ▶ Field program uncovers surface uranium mineralisation at several locations within the Surprise Creek Fault and Plug Lake areas, including **six showings with maximum scintillometer readings of 65,535 cps¹** and over **10 findings with over 10,000 cps¹**
- ▶ Surface copper mineralisation observed in several locations with semi-massive chalcocite mineralisation recorded within a **350m long quartz vein**
- ▶ The field program has been focused on visiting the historical prospects, drill locations, surface showings and significant geological structures
- ▶ Historical drilling on the Surprise Creek Fault target highlighted by **2.1m @ 4.37% U₃O₈** from 57m (VT20) including **0.9m @ 7.5% U₃O₈**
- ▶ Surprise Creek Fault target comprises a uranium soil geochemical anomaly (>25ppm U) over 500m in strike length with rock chips up to **6.37% U₃O₈** and associated with a north-northwest striking fault system
- ▶ The Company is targeting structurally controlled vein type uranium deposits at Surprise Creek, a sub-type of the basement-hosted unconformity-related uranium deposits



Figure 1: Surprise Creek Fault - Hematitic breccia with U, Cu and Pb mineralisation (max scintillometer reading of 65,535 cps)

¹ Scintillometer readings are measured in counts per second (cps) using an RS-121 scintillometer and are not directly or uniformly related to uranium grades of the rock sample measured and are only a preliminary indication of the presence of radioactive materials.

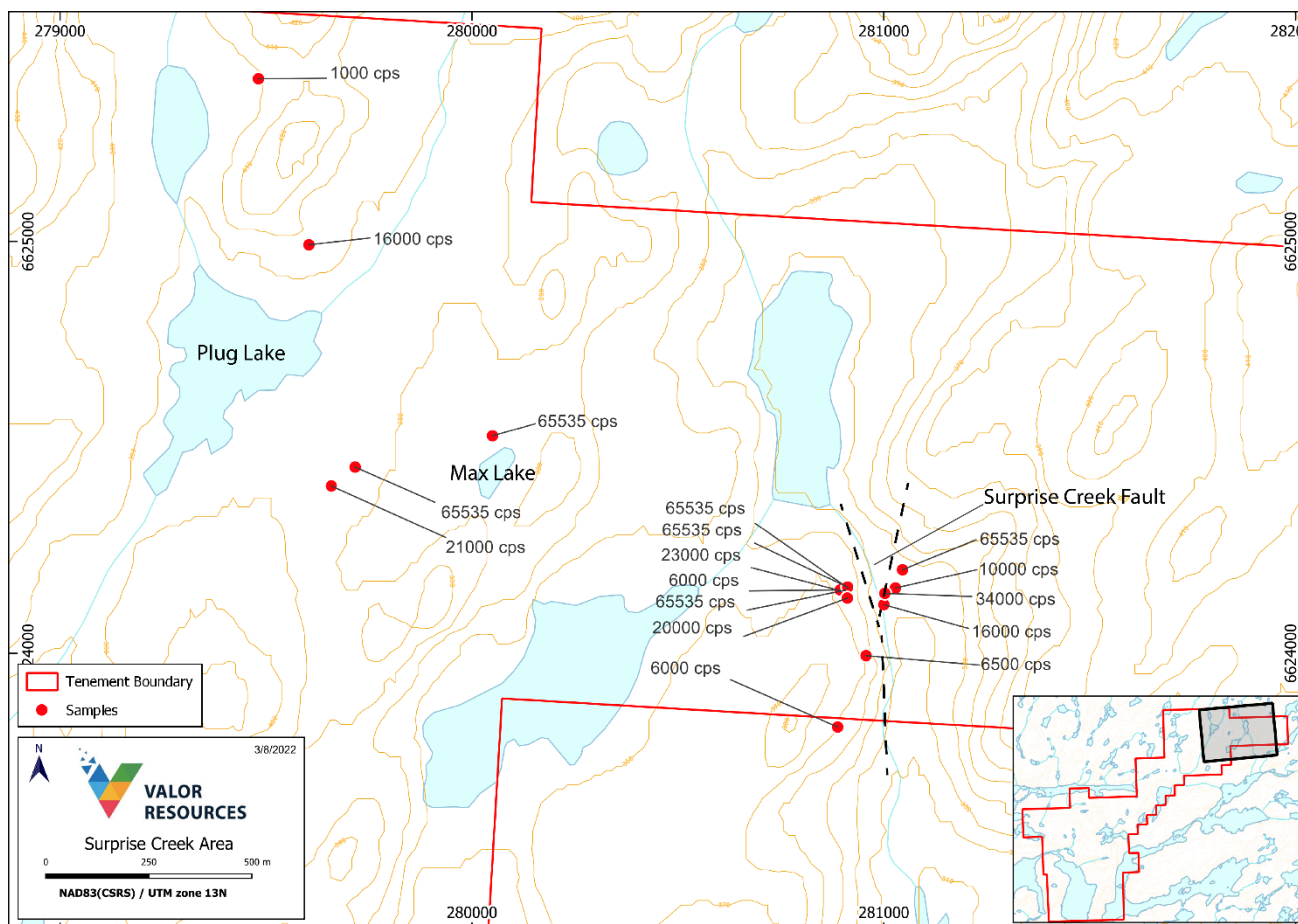


Figure 2: Surprise Creek – Surprise Creek Fault and Plug Lake target areas and maximum scintillometer readings

Valor Resources Limited (Valor) or (the Company) (ASX:VAL) is pleased to announce the initial findings of a reconnaissance field program at the Surprise Creek Project (the Project) in northern Saskatchewan. This work has confirmed several historical uranium and copper targets and identified some new, previously unrecorded uranium and copper occurrences. A total of 36 samples were collected from the uranium and copper occurrences which have been submitted for assay. Assay results are expected in around four weeks.

Executive Chairman George Bauk commented “The historical data review highlighted some exciting uranium and copper targets with the high-grade uranium drill results of 2.1m @ 4.37% U₃O₈ at Surprise Creek Fault being most noteworthy. The historical results, and the fact there has been no modern exploration in this area for uranium for over 40 years and for copper over 20 years, suggests there is significant potential in this area, and our first field program has already turned up some exciting new occurrences.”

“Based on the recent field program, the Company has further increased its land position at the Project by pegging another 7km². The copper mineralisation identified on the project has resulted in us extending our landholding to the north.”

“We propose to follow-up the initial field program at Surprise Creek in September just before the freeze-up. Before this, the exploration team will commence on-ground work at the Hook Lake and Hidden Bay Projects next month and results of the recently completed airborne gravity surveys at the Cluff Lake, Hook Lake and Hidden Bay Projects will be finalised during the current quarter. We are also continuing to work through the historical exploration data from other projects in the Athabasca Basin and will release further results of these reviews in the coming months.”

URANIUM TARGETS

The most significant uranium target based on historical exploration results is the Surprise Creek Fault target. Details of the historical exploration at the Surprise Creek Project were provided in the Company's ASX announcement dated 6th July 2022 and titled "*Surprise Creek data review highlights high-grade targets*". First-pass on-ground reconnaissance of this area has been completed with surface uranium mineralisation confirmed at several locations (see Figure 2) including in areas away from the previously recorded mineralisation. A handheld RS-121 scintillometer was used to confirm uranium mineralisation with four sample locations recording maximum readings (>65,535cps) and another seven sample locations recording >5,000cps, with multiple other occurrences of anomalous scintillometer readings present in the area. Uranium mineralisation was found within hematitic breccias (see example in Figure 1) and veins and was variably associated with copper +/- lead mineralisation.

In the Plug Lake area surface uranium mineralisation was confirmed with a further two occurrences having readings >65,535cps and another two with >5,000cps. The same mineralisation style as at Surprise Creek was observed.

The scintillometer reading locations are selective in nature and therefore have a high potential for bias and should not be considered as being representative of the overall mineralised structure or zone.

COPPER TARGETS

Surface copper mineralisation was observed in several locations with the most significant being a previously unrecorded quartz vein with semi-massive chalcocite mineralisation, which has a current known strike length of 350m. Covellite, native copper, malachite, azurite and copper-oxides were also observed, indicating the high-grade nature of the showings (see example in Figure 3).

Figure 4 below shows where copper occurrences have been confirmed in the field along with further examples of copper mineralisation. The host rock for most of these copper occurrences are mylonitic granitic rocks. It is currently unclear what style of copper mineralisation these occurrences might represent, however the close spatial relationship with the unconformity between the Thluico Lake Group sediments and the older Tazin Group mylonites suggests a possible genetic link (see Figure 4).



Figure 3: Copper mineralisation at Surprise Creek

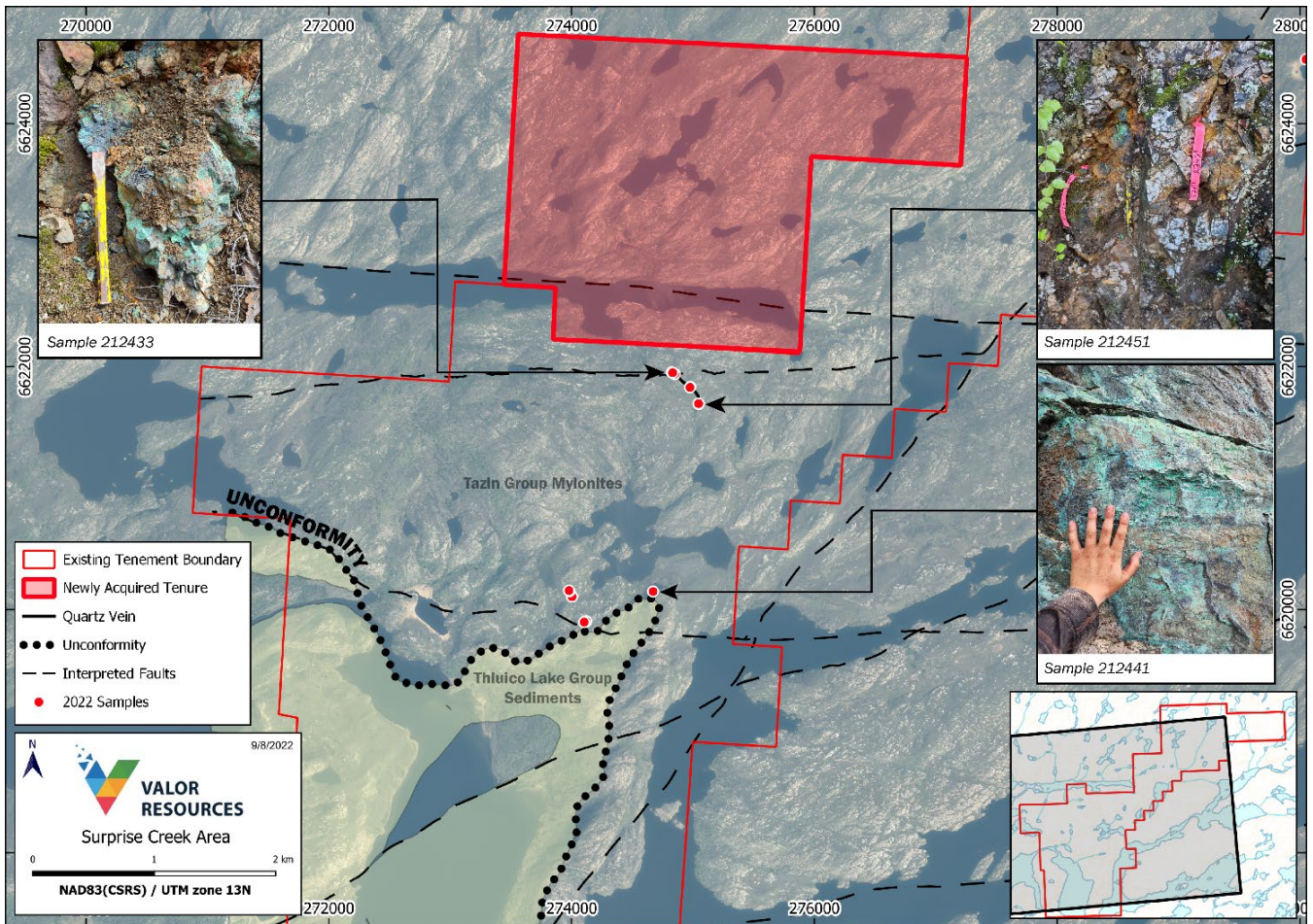


Figure 4: Surprise Creek: location of copper occurrences and new tenure

NEXT STEPS CANADA

Project Task	Target Date	Description
Cluff Lake Gravity Results	August	Interpretation and targeting
Hook Lake Drilling Assay Results	August	Drill results from March Quarter drilling program
Hook Lake Gravity Results	August	Interpretation and targeting
Pendleton and MacPhersons Lake Historical data review	September	Review of all historical data including targeting
Smitty and Lorado Historical data review	September	Review of all historical data including targeting

NEXT STEPS PERU

Project Task	Target Date	Description
Ongoing mapping and surface sampling at Picha Project	August	Geological mapping and further channel sampling at Ichucollo Target
Ground Induced Polarisation/Resistivity survey at Picha Project	Commenced in early August	Focused on Ichucollo and Huancune targets
Maiden drilling program at Picha Project	October/November	Targeting Cumbre Coya, Cobremani, Maricate and Fundicion
Ongoing mapping and surface sampling at Charaque Project	August/September	Reconnaissance sampling and mapping at Arco and Huallatani targets

This announcement has been authorised for release by the Board of Directors.

For further information, please contact:

Mr George Bauk
Executive Chairman

Email: george@totode.com.au

Phone: + 61 408 931 746

ASX : VAL

COMPETENT PERSON STATEMENT

Information in this announcement, that relates to exploration results, is based on data compiled and reviewed by Mr. Gary Billingsley, a Non-Executive Director of Valor, who is a member of The Association of Professional Engineers and Geoscientists of Saskatchewan in Canada. Mr. Billingsley has sufficient experience which is relevant to the style of mineralisation and type of deposits under consideration and to the activity which they are undertaking to qualify as Competent Persons under the 2012 Edition of the Australasian Code for reporting of Exploration Results, Mineral Resources and Ore Reserves. Mr. Billingsley consents to the inclusion of the data in the form and context in which it appears. Mr. Billingsley has reviewed calculation of measured, indicated, and inferred resources referenced according to the 2012 Edition of the Australasian Code for reporting of Exploration Results, Mineral Resources and Ore Reserves. The Company confirms that it is not aware of any new information or data that materially affects the information reported in the original market announcements and that all material assumptions and technical parameters underpinning the results in the relevant announcements continue to apply and have not materially changed. The Company confirms that the form and context in which the Competent Person's findings are presented have not been materially modified from the original market announcement.

Ends -----

ABOUT VALOR RESOURCES

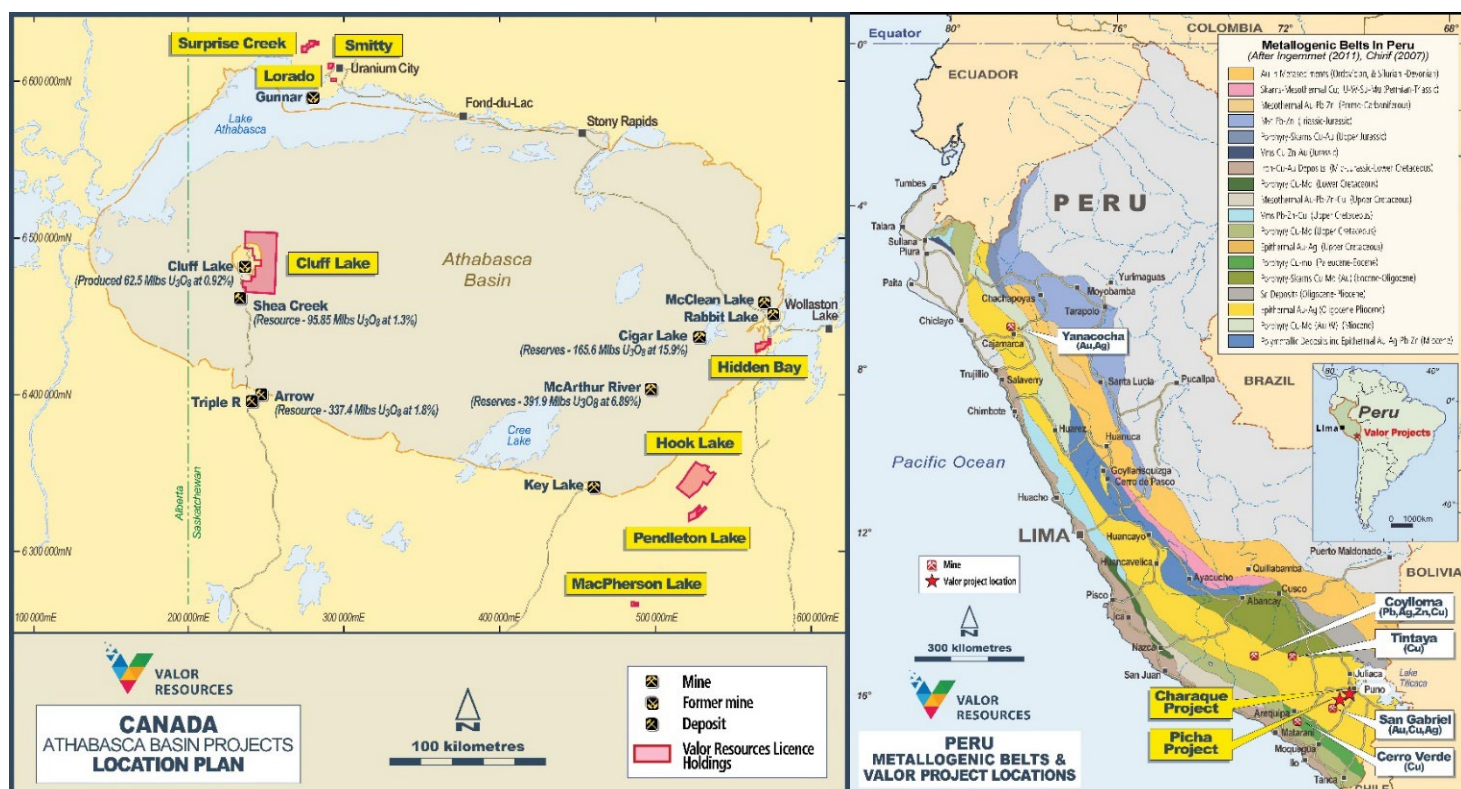
Valor Resources Limited (ASX:VAL) (“Valor” or “the Company”) is an exploration company dedicated to creating shareholder value through acquisitions and exploration activities. The Company is focused on two key commodities, copper and uranium, as outlined below, in Peru and Canada.

Valor’s 100% owned Peruvian subsidiary, Kiwanda SAC holds the rights to the Picha Project located in the Moquegua and Puno Departments of Peru, 17 km ENE of the San Gabriel Project (former Chucapaca – Buenaventura SAA (NYSE:BVN)) gold deposit, located in the Puno Department of Peru. The Picha Project is a copper-silver exploration project comprising of twenty granted mining concessions for a total of 16,500 hectares (165 km²), as well as an additional 3,500 hectares (35 km²) staked and currently awaiting title as mining concessions.

In addition to the above, Kiwanda SAC has staked 8 claims covering 6,000 hectares in the Puno Region, 30km northeast of the Picha Project, which make up the Charaque exploration project.

Valor is also the 100% owner of the following interests in Canada:

- ▶ Right to earn an 80% working interest in the Hook Lake Uranium Project located 60km east of the Key Lake Uranium Mine in northern Saskatchewan. Covering 25,846 hectares (258 km²), the 16 contiguous mineral claims host several prospective areas of uranium mineralisation; and
- ▶ 100% equity interest in 19 contiguous mineral claims covering 62,233 hectares (622 km²) in northern Saskatchewan, known as the Cluff Lake Uranium Project. The property is located 7km east of the former-producing Cluff Lake Uranium Mine and much of the project area is located within the Carswell geological complex that hosts the Cluff Lake Mine; and
- ▶ Six additional projects within the Athabasca Basin with 100% equity interest in 13 mineral claims covering 12,025 hectares at the Hidden Bay Project, Surprise Creek Project, Pendleton Lake Project, MacPherson Lake Project, Smitty Project and Lorado Project.



JORC CODE, 2012 EDITION – TABLE 1 REPORT

SECTION 1 SAMPLING TECHNIQUES AND DATA

Criteria	JORC Code explanation	Commentary
Sampling techniques	<i>Nature and quality of sampling (eg cut channels, random chips, or specific specialised industry standard measurement tools appropriate to the minerals under investigation, such as down hole gamma sondes, or handheld XRF instruments, etc). These examples should not be taken as limiting the broad meaning of sampling.</i>	36 rock chip samples were taken by the Company during the 2022 field program referenced in this report and were selective by nature. Scintillometer readings were taken with an RS-125 scintillometer on outcrops and are referenced in Figure 1 and the main body of text. In the instance of the U showings in the North of the property, scintillometers were used to identify outcrops with anomalous radioactivity that were subsequently sampled.
	<i>Include reference to measures taken to ensure sample representivity and the appropriate calibration of any measurement tools or systems used.</i>	Samples taken by the Company were selective by nature. Scintillometer readings reported were taken on outcrop at each sample site to ensure consistency in cps values. The RS-125 assay feature was used to acquire preliminary U values but are not included in this report. The RS-125 scintillometers were calibrated before the field program began and this is considered adequate for ensuring accuracy.
	<i>Aspects of the determination of mineralisation that are Material to the Public Report.</i>	In the instance of the Cu showings, visible Cu mineralisation and/or knowledge of prospectivity of certain rocks were used for determining mineralisation for selective sampling. In the instance of the U showings, scintillometers were used to identify samples for selective sampling.
Drilling techniques	<i>Drill type (eg core, reverse circulation, open-hole hammer, rotary air blast, auger, Bangka, sonic, etc) and details (eg core diameter, triple or standard tube, depth of diamond tails, face-sampling bit or other type, whether core is oriented and if so, by what method, etc).</i>	Not applicable – no drilling reported herein.
Drill sample recovery	<i>Method of recording and assessing core and chip sample recoveries and results assessed.</i>	Not applicable – no drilling reported herein
	<i>Measures taken to maximise sample recovery and ensure representative nature of the samples.</i>	Not applicable – no drilling reported herein
	<i>Whether a relationship exists between sample recovery and grade and whether sample bias may have occurred due to preferential loss/gain of fine/coarse material.</i>	Not applicable – no drilling reported herein
Logging	<i>Whether core and chip samples have been geologically and geotechnically logged to a level of detail to support appropriate Mineral Resource estimation, mining studies and metallurgical studies.</i>	Not applicable – no drilling reported herein
	<i>Whether logging is qualitative or quantitative in nature. Core (or costean, channel, etc) photography.</i>	Not applicable – no drilling reported herein
	<i>The total length and percentage of the relevant intersections logged.</i>	Not applicable – no drilling reported herein.
Sub-sampling techniques and sample preparation	<i>If core, whether cut or sawn and whether quarter, half or all core taken.</i>	Not applicable – no drilling reported herein
	<i>If non-core, whether riffled, tube sampled, rotary split, etc and whether sampled wet or dry.</i>	Not applicable – no drilling reported herein
	<i>For all sample types, the nature, quality and appropriateness of the sample preparation technique.</i>	Not applicable – no assay results reported.
	<i>Quality control procedures adopted for all sub-sampling stages to maximise representivity of samples.</i>	Not applicable – no sub-sampling
	<i>Measures taken to ensure that the sampling is representative of the in situ material collected, including for instance results for field duplicate/second-half sampling.</i>	Not applicable – sampling results not reported herein.
Quality of assay data and laboratory tests	<i>Whether sample sizes are appropriate to the grain size of the material being sampled.</i>	Not applicable – sampling results not reported herein.
	<i>The nature, quality and appropriateness of the assaying and laboratory procedures used and whether the technique is considered partial or total.</i>	Not applicable – no assays reported herein
	<i>For geophysical tools, spectrometers, handheld XRF instruments, etc, the parameters used in determining the analysis including instrument make and model, reading times, calibrations factors applied and their derivation, etc.</i>	For data acquired in the 2022 Field Program: <ul style="list-style-type: none"> - An RS-125 Scintillometer was used for all samples. - A minimum and maximum scintillometer reading was recorded for each sample.

Criteria	JORC Code explanation	Commentary
		<ul style="list-style-type: none"> - Calibration was completed on all machines prior to field work - Readings are given in cps (counts per second)
	<i>Nature of quality control procedures adopted (eg standards, blanks, duplicates, external laboratory checks) and whether acceptable levels of accuracy (ie lack of bias) and precision have been established.</i>	For the 2022 Field Program, the readings reported are selective in nature. The scintillometer was allowed to take a reading for 15 seconds and a maximum and minimum cps value was recorded at each sample location. When a scintillometer assay was taken, a time period of 120 seconds was used, however this data is not included in this report. Samples have been sent to SRC in Saskatoon. Lab standards and duplicates are utilised by SRC and inserted for every 20 samples analysed.
Verification of sampling and assaying	<i>The verification of significant intersections by either independent or alternative company personnel.</i>	Not applicable – no assays reported herein.
	<i>The use of twinned holes.</i>	Not applicable – no drilling undertaken.
	<i>Documentation of primary data, data entry procedures, data verification, data storage (physical and electronic) protocols.</i>	Data is recorded in the field using a tablet-based GIS system, with some locations also being marked with a GPS. Data is uploaded to cloud storage daily and added to the Valor geological database which is managed by Terra Resources in Perth.
	<i>Discuss any adjustment to assay data.</i>	Not applicable – no assays reported herein.
Location of data points	<i>Accuracy and quality of surveys used to locate drill holes (collar and down-hole surveys), trenches, mine workings and other locations used in Mineral Resource estimation.</i>	For the 2022 field program, no historic drill-holes were located. Co-ordinates were taken using a Garmin 66ST with an accuracy of +/- 5m. Historic trench locations were confirmed and located where possible.
	<i>Specification of the grid system used.</i>	The geodetic system used for all spatial data was NAD83 in UTM Zone 12N.
	<i>Quality and adequacy of topographic control.</i>	Topographic control is considered fit for purpose.
Data spacing and distribution	<i>Data spacing for reporting of Exploration Results.</i>	The project is at an early exploration stage and sample spacing is not considered an important factor at this stage.
	<i>Whether the data spacing and distribution is sufficient to establish the degree of geological and grade continuity appropriate for the Mineral Resource and Ore Reserve estimation procedure(s) and classifications applied.</i>	Not applicable – no Mineral Resource estimation.
	<i>Whether sample compositing has been applied.</i>	No sample compositing has been applied.
Orientation of data in relation to geological structure	<i>Whether the orientation of sampling achieves unbiased sampling of possible structures and the extent to which this is known, considering the deposit type.</i>	Scintillometer readings and samples were taken selectively therefore they may be some bias towards mineralised structures.
	<i>If the relationship between the drilling orientation and the orientation of key mineralised structures is considered to have introduced a sampling bias, this should be assessed and reported if material.</i>	Surface samples taken during the 2022 field program were selective and thus a spatial relationship to geological structures is intrinsic to this method.
Sample security	<i>The measures taken to ensure sample security.</i>	Samples were stored safely and the Company is not aware of any risk to sample integrity. General access to the samples prior to transport is only available to site personnel.
Audits or reviews	<i>The results of any audits or reviews of sampling techniques and data.</i>	Not applicable for early-stage exploration.

SECTION 2 REPORTING OF EXPLORATION RESULTS (Criteria listed in the preceding section also apply to this section.)

Criteria	JORC Code explanation	Commentary
Mineral tenement and land tenure status	<i>Type, reference name/number, location and ownership including agreements or material issues with third parties such as joint ventures, partnerships, overriding royalties, native title interests, historical sites, wilderness or national park and environmental settings.</i>	The Surprise Creek Project comprises 4 contiguous mineral dispositions covering 3,470 hectares.
	<i>The security of the tenure held at the time of reporting along with any known impediments to obtaining a licence to operate in the area</i>	All mineral claims are currently granted and in good standing with no known impediments.
Exploration done by other parties	<i>Acknowledgment and appraisal of exploration by other parties.</i>	<p>Exploration was previously completed on the Surprise Creek Project by several companies since the 1950s including CONS VAN TOR, CULTUS, ENEX, Phelps Dodge, PINEX, Independent Mining Company, SMDC and independent prospectors. this includes but is not limited to:</p> <ul style="list-style-type: none"> - Airborne Magnetic surveys, Electromagnetic surveys, IP surveys, Scintillometer prospecting. - Geochemical sampling, prospecting and mapping - Diamond drilling
Geology	<i>Deposit type, geological setting and style of mineralisation.</i>	The Surprise Creek Project is situated to the North of the Athabasca basin in the Zemlak Domain of the Rae Province. The area is underlain predominantly by Precambrian rocks of the Archean Tazin Group, overlain in places by the Martin Formation. Historically, the Athabasca Basin region produces over 20% of the world's primary uranium supply. The exploration target is basement-hosted and Athabasca sandstone-hosted unconformity-style uranium deposits.
Drill hole Information	<i>A summary of all information material to the understanding of the exploration results including a tabulation of the following information for all Material drill holes:</i> <ul style="list-style-type: none"> • easting and northing of the drill hole collar • elevation or RL (Reduced Level – elevation above sea level in metres) of the drill hole collar • dip and azimuth of the hole • down hole length and interception depth • hole length. 	Not applicable – no drilling reported.
	<i>If the exclusion of this information is justified on the basis that the information is not Material and this exclusion does not detract from the understanding of the report, the Competent Person should clearly explain why this is the case.</i>	Not applicable – no drilling reported.
Data aggregation methods	<i>In reporting Exploration Results, weighting averaging techniques, maximum and/or minimum grade truncations (eg cutting of high grades) and cut-off grades are usually Material and should be stated.</i>	Not applicable-these techniques don't apply to the type of sampling undertaken.
	<i>Where aggregate intercepts incorporate short lengths of high grade results and longer lengths of low grade results, the procedure used for such aggregation should be stated and some typical examples of such aggregations should be shown in detail.</i>	Not applicable – sample aggregation was not used.
	<i>The assumptions used for any reporting of metal equivalent values should be clearly stated.</i>	Not applicable – No metal equivalents reported.
Relationship between mineralisation widths and intercept lengths	<i>These relationships are particularly important in the reporting of Exploration Results.</i>	Not applicable – point data only reported.
	<i>If the geometry of the mineralisation with respect to the drill hole angle is known, its nature should be reported.</i>	Not applicable – no drilling reported.
	<i>If it is not known and only the down hole lengths are reported, there should be a clear statement to this effect (eg 'down hole length, true width not known').</i>	Not applicable – no drilling reported.

Criteria	JORC Code explanation	Commentary
Diagrams	<i>Appropriate maps and sections (with scales) and tabulations of intercepts should be included for any significant discovery being reported These should include, but not be limited to a plan view of drill hole collar locations and appropriate sectional views.</i>	Refer to Figures 1, 2, 3 and 4 above in body of text.
Balanced reporting	<i>Where comprehensive reporting of all Exploration Results is not practicable, representative reporting of both low and high grades and/or widths should be practiced to avoid misleading reporting of Exploration Results.</i>	Scintillometer readings only reported herein which were taken to obtain an indication of uranium mineralisation,
Other substantive exploration data	<i>Other exploration data, if meaningful and material, should be reported including (but not limited to): geological observations; geophysical survey results; geochemical survey results; bulk samples – size and method of treatment; metallurgical test results; bulk density, groundwater, geotechnical and rock characteristics; potential deleterious or contaminating substances.</i>	No previous on-ground exploration has been completed by Valor on the Surprise Creek Project. Historical assay results are the only substantive data to report at this stage of exploration.
Further work	<i>The nature and scale of planned further work (eg tests for lateral extensions or depth extensions or large-scale step-out drilling).</i>	Further work on the project will include the following: <ul style="list-style-type: none"> • Assessment of the efficacy of airborne geophysical methods in delineating areas of mineral potential on the property. • Further on-ground sampling and geological mapping
	<i>Diagrams clearly highlighting the areas of possible extensions, including the main geological interpretations and future drilling areas, provided this information is not commercially sensitive.</i>	Refer to Figures 1, 2, 3 and 4 above in body of text.

SECTION 3 ESTIMATION AND REPORTING OF MINERAL RESOURCES

Not applicable.

SECTION 4 ESTIMATION AND REPORTING OF ORE RESERVES

Not applicable.