

FURTHER EXTENSIONAL DRILLING SUCCESS AT NORTH AUBRY

HIGHLIGHTS

- Further diamond drilling assay results returned from North Aubry (Seymour Project) including:
 - Hole GTDD-22-0323 intersected 17.9m and 7.7m thick pegmatites with significant intercepts:
 - 6.0m @ 1.37% Li₂O (from 218.9m to 225.0m); and
 - 3.6m @ 2.08% Li₂O (from 378.3m to 382.0m).
 - Hole GTDD-22-0128 intersected 6.4m and 22.8m thick pegmatites with significant intercepts:
 - 2.8m @ 1.48% Li₂O (from 253.3m to 256.2m); and
 - 3.4m @ 0.86% Li₂O (from 322.8m to 326.3m).
 - Hole GTDD-22-0320 intersected 10.7m thick pegmatite with significant intercept of:
 - 10.7m @ 1.49% Li₂O (from 458.1m to 468.8m).
- Intersections considerably thicker than modelled and significantly increases the mineralised volumes and grade in this targeted strike extension of North Aubry.
- Drilling at Seymour now targeting lateral extents of the Aubry Complex and testing numerous pegmatite exposures within the Pye Complex.
- Drilling at Root Project set to commence shortly with additional equipment mobilised to site.
- Root hosts known high-grade pegmatites ready for drilling and Mineral Resource Estimation.

Green Technology Metals Limited (ASX: GT1) (GT1 or the **Company**) is pleased to provide an update from the diamond drilling activity at its flagship Seymour Lithium Project in Ontario, Canada.

“These intercepts significantly increase the targeted mineralised volumes in these areas of North Aubry, with the original interpretations suggesting much narrower thicknesses. Our drilling focus at Seymour now moves to testing for lateral repeats of the North Aubry deposit to the north and drilling the multiple mapped pegmatite targets across the Pye Complex. We are also gearing up for commencement of drilling at the Root Project, with known high-grade pegmatites ready for targeted resource definition drilling and Mineral Resource estimation.”

- GT1 Chief Executive Officer, Luke Cox



Further extensional intercepts at North Aubry

Diamond drilling has continued at the North Aubry deposit of GTI's flagship Seymour Project since recommencement in June. The sustained focus of drilling at North Aubry has been further expansion of the deposit dimensions, both along strike to the north and with further down dip extensions.

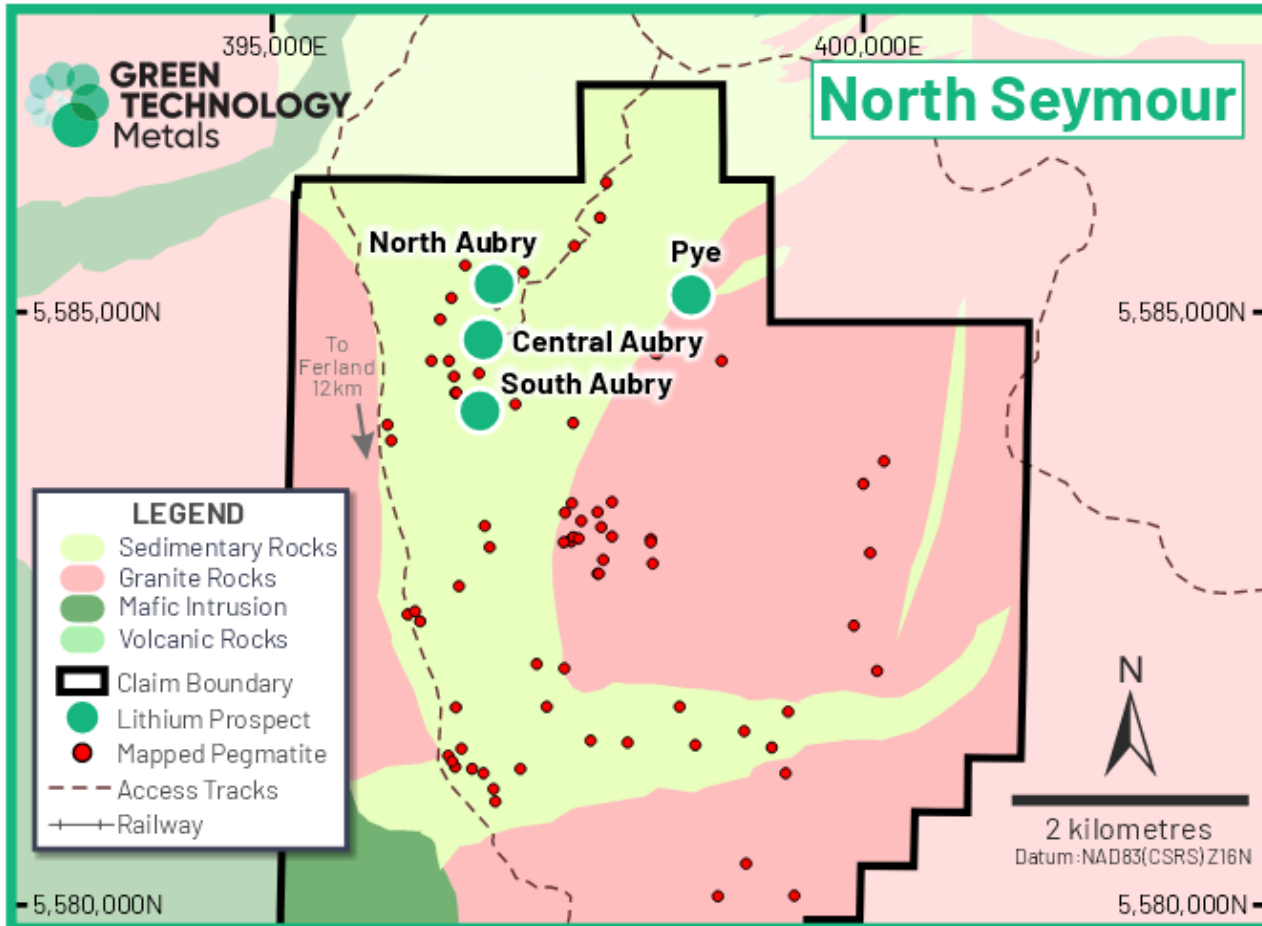


Figure 1: Location map of northern area of the Seymour Project showing North and South Aubry deposits, Central Aubry zone and Pye prospect

Hole GTDD-22-0323, which stepped out 60 metres northwest of the nearest previous hole, intersected two spodumene-bearing pegmatite intervals from 217.9m and 377.9m downhole with major intercepts of:

- 6.0m @ 1.37% Li_2O (from 218.9m to 225.0m); and
- 3.6m @ 2.08% Li_2O (from 378.3m to 382.0m).

These intersections were thicker than modelled and increases the mineralised volumes in this targeted strike extension of the North Aubry deposit.

Hole GTDD-22-0128 was completed approximately 230m down dip of hole GTDD-22-0323 and intersected two spodumene-bearing pegmatites from 252.3m and 312.0m downhole with major intercepts of:

- 2.8m @ 1.48% Li_2O (from 253.3m to 256.2m); and
- 3.4m @ 0.86% Li_2O (from 322.8m to 326.3m).

Hole GTDD-22-0320, our deepest hole targeting down dip extension intersect spodumene-bearing pegmatite from 458.1m to 468.8m returning 10.7m @ 1.49 % Li₂O, highlighting the orebody continues at depth with consistent grade.

Figure 2: Significant pegmatite intercepts and grade with major Intercepts, remaining holes in JORC table

HOLE_ID	DEPTH_FROM	DEPTH_TO	INTERVAL	Li ₂ O%	Major Intercept From	Major Intercept To	Major Intercept	Li ₂ O%
GTDD-22-0128	252.33	258.74	6.41	0.75	253.37	256.23	2.86	1.48
GTDD-22-0128	312.00	334.86	22.86	0.40	322.83	326.30	3.47	0.86
GTDD-22-0320	458.18	468.88	10.70	1.49	458.18	468.88	10.70	1.49
GTDD-22-0323	217.96	235.87	17.91	0.70	218.91	225.00	6.09	1.37
GTDD-22-0323	377.91	385.64	7.73	0.93	378.38	382.00	3.62	2.08

Additional exploratory holes have been drilled north-west of North Aubry, intersecting the boundary of the Seymour Syncline and delineating the western extent of the Pillow Basalts which host the pegmatites in the Aubry Complex. This is a key boundary for delineating the corridor for potential pegmatite emplacement.

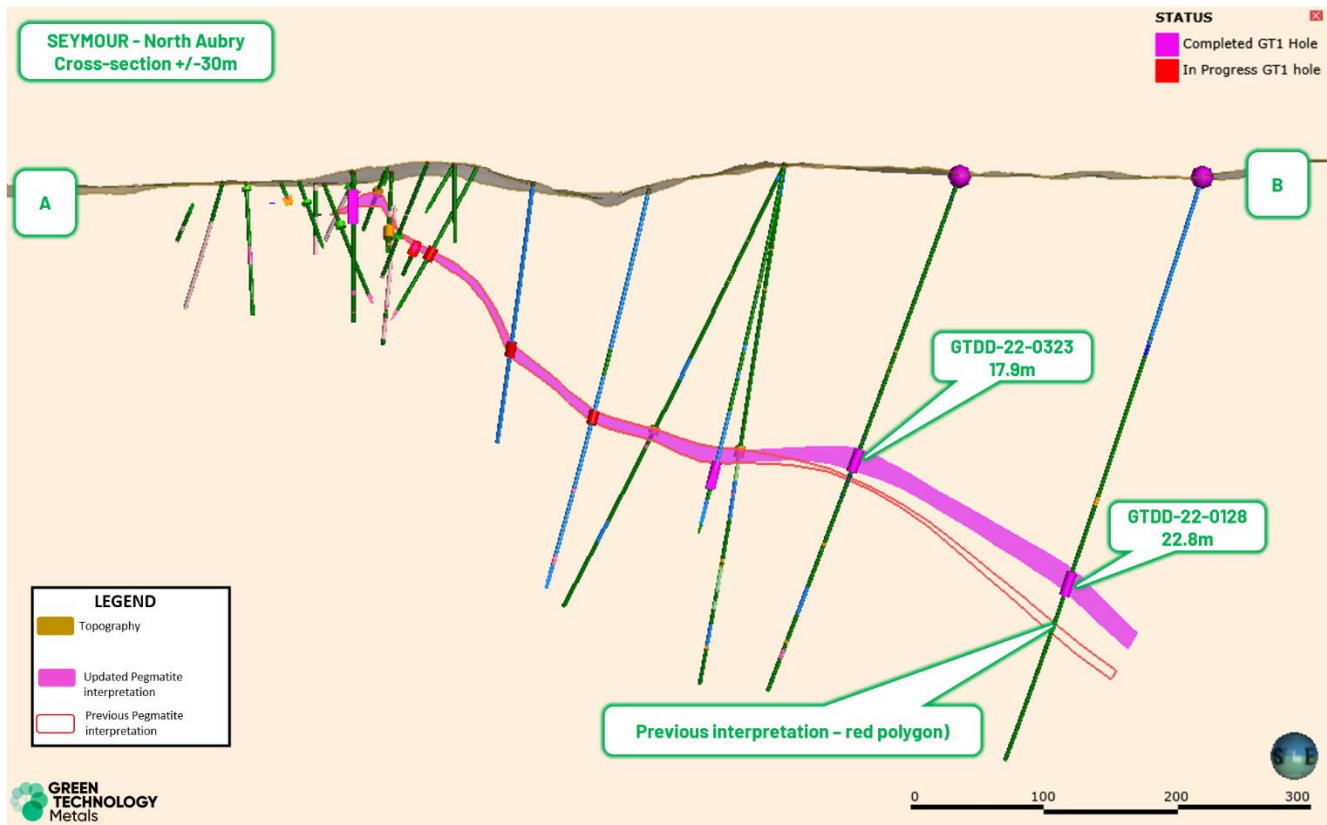


Figure 2: Cross section comparing the interpretation of pegmatite prior to hole GTDD-22-0323 being drilled (red outline) with the significantly thicker re-interpretation based on the GTDD-22-0323 and GTDD-22-0128 intersections

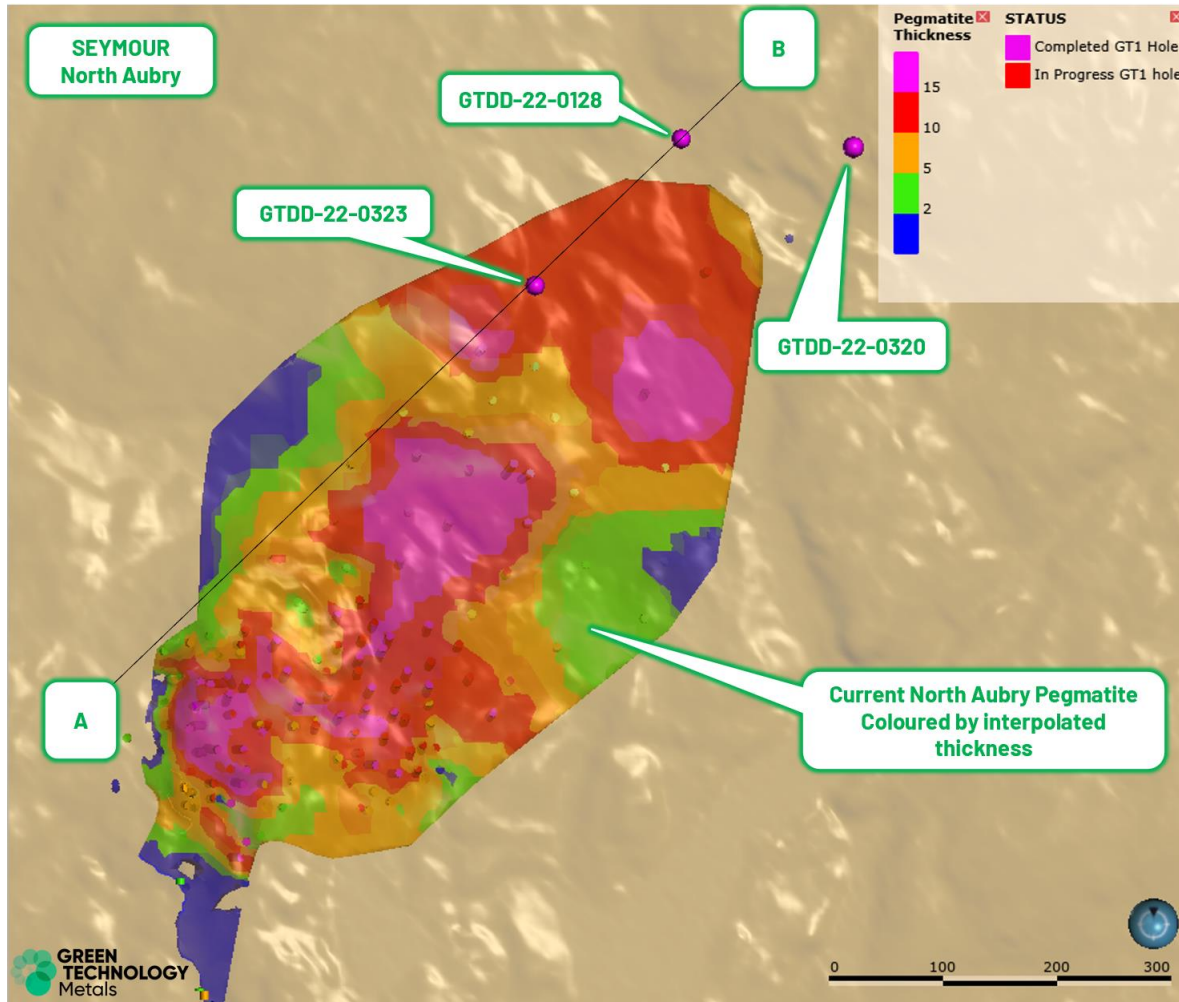


Figure 3: Plan view showing section line and drillhole locations of GTDD-22-0128, 0323 and 0320

Current drilling focus at Seymour

Drilling at the Seymour Project is now set to focus on the lateral extents of both the Aubry Complex and Pye Complex.

Aubry Complex

Step-out targets are to be drilled north-east of North Aubry targeting duplication of the North Aubry mineralisation system. These targets have been designed off multilayer field data sets collected by previous exploration companies and recent data collection and collation by GT1 including:

- 1) Geophysical interpretation by Southern Geo Science;
- 2) Lidar bare-earth interpretation by MPX and Eagle Mapping;
- 3) Ortho mosaic interpretation by MPX and Eagle Mapping;
- 4) Field mapping by GT1, Fladgate and Bayside Geoscience; and
- 5) Target reconnaissance by GT1.

The Aubry complex sits along a NE-SW magnetic high structure which is several kilometres long and has distinct magnetic low “breaks” along its strike. The magnetic low “breaks” correlate with the emplacement of the North and South Aubry pegmatites. These magnetic low “breaks” continue north of North Aubry and south of South Aubry with mapped pegmatites in these areas (see Figure 4).

For example, field mapping completed and reported by Ardiden in May 2018 located a spodumene bearing pegmatite exposure approximately 700m north-east of North Aubry along strike of the magnetic structure. The exposure is approximately 4m wide and 8m long and hasn’t been drilled. As previously discussed, the North Aubry discovery started with a similar size exposure due to vegetation cover and glacial till (see Figure 5).

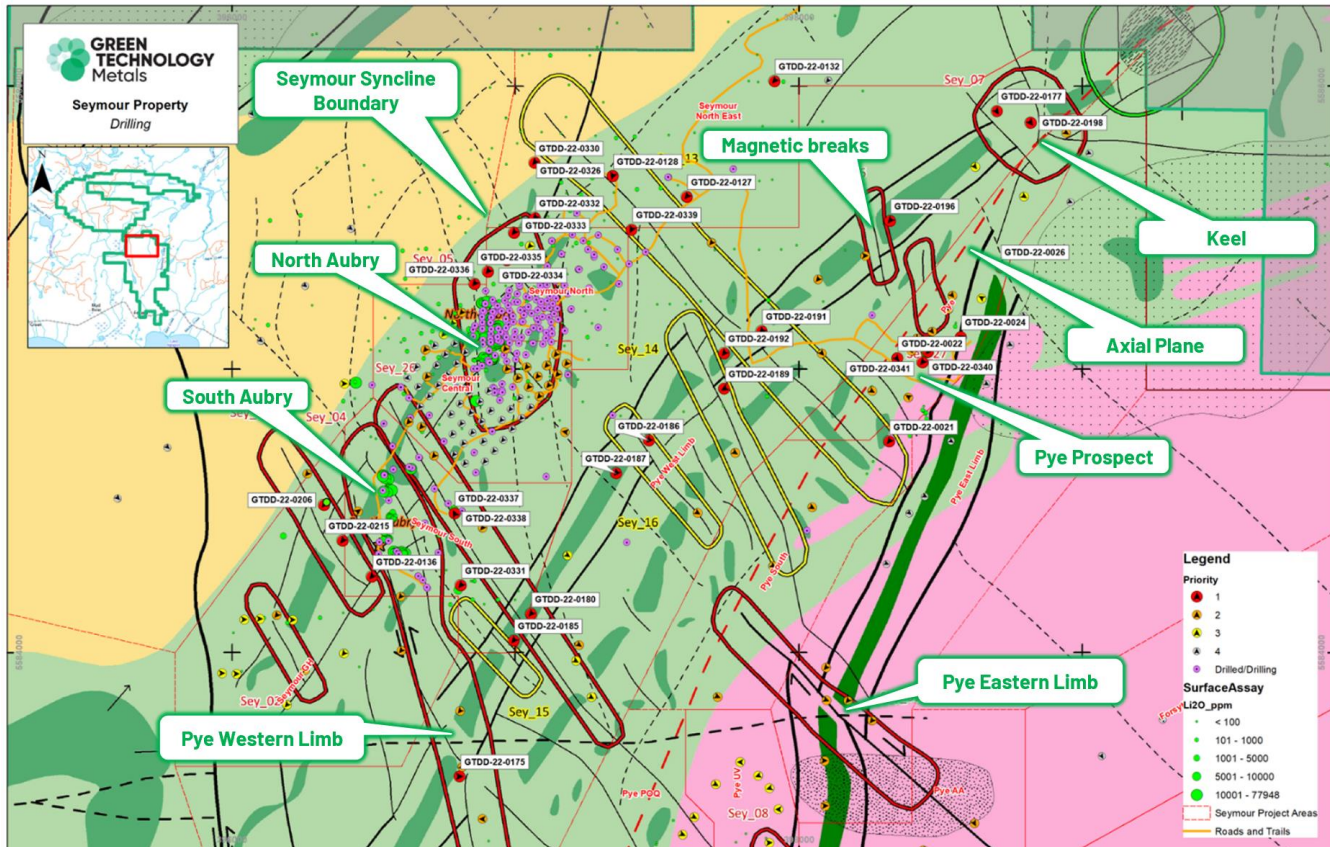


Figure 4: Seymour Project priority drill targets with geology, structural geology and interpreted geophysical domains

Pye Complex

On-ground reconnaissance exploration at the broader Pye prospect (Pye Complex) has been very successful in tracing pegmatite exposure north-south along its strike (Pye Eastern Limb) and culminating at the interpreted syn-form keel in the north. Field geologists have also navigated part of the Pye Western Limb in preparation for target reconnaissance, mapping and drilling (see Figure 4).

Current major drilling targets at Pye set to be tested over coming months include the axial plane of the Pye syn-form as well as the western and eastern limbs of the syn-form where numerous alternating magnetic highs and lows suggest structural extension and the potential for pegmatite swarm inflows, as have occurred at North Aubry.



Figure 5: Peter Spitalny (geologist) reviewing the pegmatite exposure (left). Image showing visible spodumene (right), located approximately 397584E 5585573N.

Ground gravity work

To support the field activities at both the Aubry Complex and Pye Complex, GT1 has commissioned Abitibi Geophysics to complete a ground gravity survey. Gravity measurements will be taken every 50m intervals within the two outlined areas in Figure 6. Area A will be over the North Aubry complex to calibrate known pegmatites with gravity response and Area B will be over the highly prospective Pye West Limb, which is very similar to the Aubry complex.

The crew will make use of existing roads and trails so that the final mesh of gravity stations is approximately 50 m x 50 m spacing. Each area is approximately 0.5 km², so gravity will be measured at about 400 locations within the areas. DGPS will be used for accurate station locations.

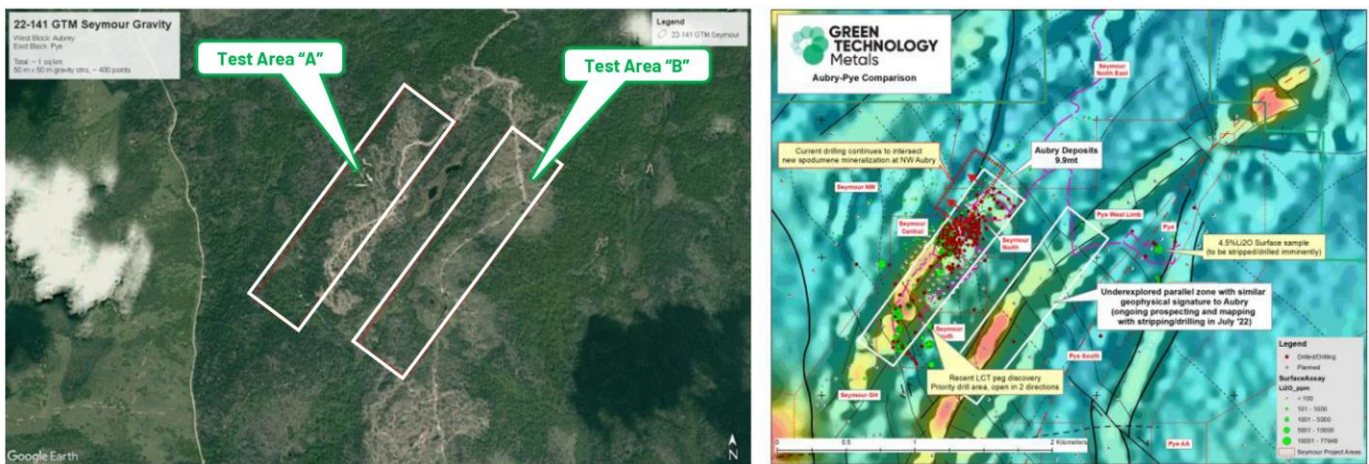


Figure 6: Ground gravity survey areas

This ASX release has been approved for release by: Luke Cox, Chief Executive Officer

KEY CONTACTS

Investors

Luke Cox

Chief Executive Officer

info@greentm.com.au

+61 8 6557 6825

Media

Michael Vaughan

Fivemark Partners

michael.vaughan@fivemark.com.au

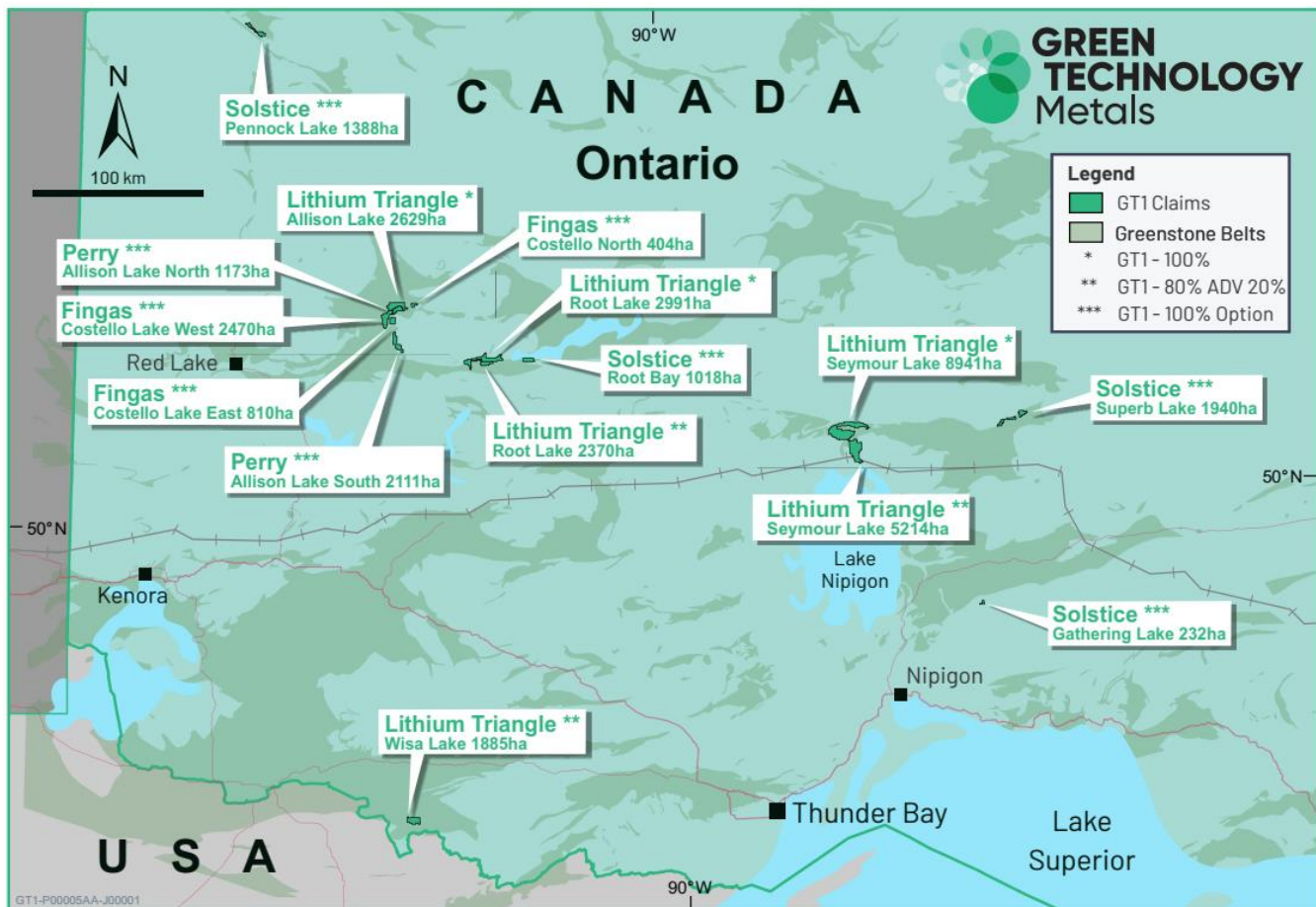
+61 422 602 720

Green Technology Metals (ASX:GT1)

GT1 is a North American focussed lithium exploration and development business. The Company's Ontario Lithium Projects comprise high-grade, hard rock spodumene assets (Seymour, Root and Wisa) and lithium exploration claims (Allison and Solstice) located on highly prospective Archean Greenstone tenure in north-west Ontario, Canada.

All sites are proximate to excellent existing infrastructure (including hydro power generation and transmission facilities), readily accessible by road, and with nearby rail delivering transport optionality.

Seymour has an existing Mineral Resource estimate of 9.9 Mt @ 1.04% Li₂O (comprised of 5.2 Mt at 1.29% Li₂O Indicated and 4.7 Mt at 0.8% Li₂O Inferred).¹ Accelerated, targeted exploration across all three projects delivers outstanding potential to grow resources rapidly and substantially.



The Company currently holds an 80% interest in the Ontario Lithium Projects (Seymour, Root and Wisa) under a joint venture with Arden Limited (ASX: ADV).

For full details of the Seymour Mineral Resource estimate, see GT1 ASX release dated 23 June 2022, *Interim Seymour Mineral Resource Doubles to 9.9Mt*. The Company confirms that it is not aware of any new information or data that materially affects the information in that release and that the material assumptions and technical parameters underpinning this estimate continue to apply and have not materially changed.

APPENDIX A: IMPORTANT NOTICES

Competent Person's Statements

Information in this report relating to Exploration Results is based on and fairly represents information reviewed by Mr Luke Cox (Fellow AusIMM). Mr Cox has sufficient experience which is relevant to the style of mineralisation and type of deposit under consideration and to the activity which he is undertaking to qualify as a Competent Person as defined by the 2012 Edition of the Australasian Code for reporting of Exploration Results, Mineral Resources and Ore Reserves. Mr Cox consents to the inclusion of the data in the form and context in which it appears in this release. Mr Cox is the Chief Executive Officer of the Company and holds securities in the Company.

Forward Looking Statements

Certain information in this document refers to the intentions of Green Technology Metals Limited (ASX: GT1), however these are not intended to be forecasts, forward looking statements or statements about the future matters for the purposes of the Corporations Act or any other applicable law. Statements regarding plans with respect to GT1's projects are forward looking statements and can generally be identified by the use of words such as 'project', 'foresee', 'plan', 'expect', 'aim', 'intend', 'anticipate', 'believe', 'estimate', 'may', 'should', 'will' or similar expressions. There can be no assurance that the GT1's plans for its projects will proceed as expected and there can be no assurance of future events which are subject to risk, uncertainties and other actions that may cause GT1's actual results, performance or achievements to differ from those referred to in this document. While the information contained in this document has been prepared in good faith, there can be given no assurance or guarantee that the occurrence of these events referred to in the document will occur as contemplated. Accordingly, to the maximum extent permitted by law, GT1 and any of its affiliates and their directors, officers, employees, agents and advisors disclaim any liability whether direct or indirect, express or limited, contractual, tortious, statutory or otherwise, in respect of, the accuracy, reliability or completeness of the information in this document, or likelihood of fulfilment of any forward-looking statement or any event or results expressed or implied in any forward-looking statement; and do not make any representation or warranty, express or implied, as to the accuracy, reliability or completeness of the information in this document, or likelihood of fulfilment of any forward-looking statement or any event or results expressed or implied in any forward-looking statement; and disclaim all responsibility and liability for these forward-looking statements (including, without limitation, liability for negligence).

APPENDIX B: SEYMOUR MINERAL RESOURCE ESTIMATE

Deposit	Interim 2022 MRE (0.2% Li ₂ O cut-off)		
	Tonnes (Mt)	Li ₂ O (%)	Ta ₂ O ₅ (ppm)
North Aubry			
Indicated	5.2	1.29	161
Inferred	2.6	0.9	120
<i>North Aubry total</i>	<i>7.8</i>	<i>1.17</i>	<i>148</i>
South Aubry			
Inferred	2.1	0.5	90
<i>South Aubry total</i>	<i>2.1</i>	<i>0.5</i>	<i>90</i>
Global Seymour total	9.9	1.04	137

1. MRE produced in accordance with the 2012 Edition of the Australasian Code for Reporting of Mineral Resources and Ore Reserves.
2. Figures constrained to US\$4,000/t SC6 open pit shell and reported above a 0.2% Li₂O cut-off; numbers have been rounded.

APPENDIX C: JORC CODE, 2012 EDITION – Table 1 Report

Section 1 Sampling Techniques and Data

Criteria	JORC Code explanation	Commentary
Sampling techniques	<ul style="list-style-type: none"> Nature and quality of sampling (eg cut channels, random chips, or specific specialised industry standard measurement tools appropriate to the minerals under investigation, such as down hole gamma sondes, or handheld XRF instruments, etc). These examples should not be taken as limiting the broad meaning of sampling. Include reference to measures taken to ensure sample representivity and the appropriate calibration of any measurement tools or systems used. Aspects of the determination of mineralisation that are Material to the Public Report. In cases where 'industry standard' work has been done this would be relatively simple (eg 'reverse circulation drilling was used to obtain 1 m samples from which 3 kg was pulverised to produce a 30 g charge for fire assay'). In other cases more explanation may be required, such as where there is coarse gold that has inherent sampling problems. Unusual commodities or mineralisation types (eg submarine nodules) may warrant disclosure of detailed information. 	<p>Diamond Drilling</p> <ul style="list-style-type: none"> Diamond drilling was used to obtain nominally 1m downhole samples of core. Core samples were ½ cored using a diamond saw with ½ the core placed in numbered sample bags for assaying and the other half retained in sequence in the core tray. ½ core samples were approximately 2.5kg in weight with a minimum weight of 500grams. Core was cut down the apex of the core and the same downhole side of the core selected for assaying to reduce potential sampling bias. <p>Historic Grab Samples</p> <ul style="list-style-type: none"> Samples were collected between 16 June and 9 November 2016 by Caracle Creek International Consulting Inc, of Sudbury Ontario on behalf of Ardiden Limited (ASX:ADV) and are noted in the Technical Report for MNDM Assessment, 2016 Surface Exploration Program, dated 28 September 2018. The report was prepared by Caracle Creek International Consulting Inc on behalf of Ardiden and included channel samples collected within the reporting period. Details of the grab sampling and preparation techniques were extracted from this report; Grab Samples were collected using a hammer and/or chisel from a cleaned rock exposure. Samples were tagged and placed in a cotton bag then fastened with a zip tie. <p>Historic Channel Samples</p> <ul style="list-style-type: none"> Preparation prior to obtaining the channel samples including grid and geo-references and marking of the pegmatite structures. Samples were cut across the pegmatite with a diamond saw perpendicular to strike. Average 1 metre samples are obtained, logged, removed and bagged and secured in accordance with QAQC procedures. Sampling continued past the Spodumene -Pegmatite zone, even if it is truncated by Mafic Volcanic a later intrusion. Samples were then transported directly to the laboratory for analysis accompanied with the log and instruction forms. Bagging of the samples was supervised by a geologist to ensure there are no numbering mix-ups.

Criteria	JORC Code explanation	Commentary
		<ul style="list-style-type: none"> One tag from a triple tag book was inserted in the sample bag.
Drilling techniques	<ul style="list-style-type: none"> Drill type (eg core, reverse circulation, open-hole hammer, rotary air blast, auger, Bangka, sonic, etc) and details (eg core diameter, triple or standard tube, depth of diamond tails, face-sampling bit or other type, whether core is oriented and if so, by what method, etc). 	<ul style="list-style-type: none"> Tri-cone drilling was undertaken through the thin overburden prior to NQ2 diamond drilling through the primary rock.
Drill sample recovery	<ul style="list-style-type: none"> Method of recording and assessing core and chip sample recoveries and results assessed. Measures taken to maximise sample recovery and ensure representative nature of the samples. Whether a relationship exists between sample recovery and grade and whether sample bias may have occurred due to preferential loss/gain of fine/coarse material. 	<ul style="list-style-type: none"> No core was recovered through the overburden tri-coned section of the hole (top 5m of the hole) Core recovery through the primary rock and mineralised pegmatite zones was over 98% and considered satisfactory. Recovery was determined by measuring the recovered metres in the core trays against the drillers core block depths for each run.
Logging	<ul style="list-style-type: none"> Whether core and chip samples have been geologically and geotechnically logged to a level of detail to support appropriate Mineral Resource estimation, mining studies and metallurgical studies. Whether logging is qualitative or quantitative in nature. Core (or costean, channel, etc) photography. The total length and percentage of the relevant intersections logged. 	<ul style="list-style-type: none"> Each sample was logged for lithology, minerals, grain size and texture as well as alteration, sulphide content, and any structures. Logging is qualitative in nature. Samples are representative of an interval or length. Sampling was undertaken for the entire cross strike length of the intersected pegmatite unit at nominal 1m intervals with breaks at geological contacts. Sampling extended into the country mafic rock.
Sub-sampling techniques and sample preparation	<ul style="list-style-type: none"> If core, whether cut or sawn and whether quarter, half or all core taken. If non-core, whether riffled, tube sampled, rotary split, etc and whether sampled wet or dry. For all sample types, the nature, quality and appropriateness of the sample preparation technique. Quality control procedures adopted for all sub-sampling stages to maximise representivity of samples. Measures taken to ensure that the sampling is representative of the in situ material collected, including for instance results for field duplicate/second-half sampling. Whether sample sizes are appropriate to the grain size of the material being sampled. 	<ul style="list-style-type: none"> Each ½ core sample was dried, crushed to entirety to 90% -10 mesh, riffle split (up to 5 kg) and then pulverized with hardened steel (250 g sample to 95% -150 mesh)(includes cleaner sand). Blanks and Certified Reference samples were inserted in each batch submitted to the laboratory at a rate of approximately 1:20. Field duplicates were taken at a rate of 1:20 taken immediately adjacent to the original sample. The sample preparation process is considered representative of the whole core sample.
Quality of assay data and laboratory tests	<ul style="list-style-type: none"> The nature, quality and appropriateness of the assaying and laboratory procedures used and whether the technique is considered partial or total. For geophysical tools, spectrometers, handheld XRF instruments, etc, the parameters used in determining the analysis including instrument make and model, reading times, calibrations factors applied and their derivation, etc. Nature of quality control procedures adopted (eg standards, blanks, duplicates, external laboratory checks) and whether acceptable levels of accuracy (ie lack of bias) and 	<ul style="list-style-type: none"> Actlabs inserted internal standards, blanks and pulp duplicates within each sample batch as part of their own internal monitoring of quality control. All and blanks and certified reference samples returned acceptable results. GT1 inserted certified lithium standards and blanks into each batch submitted to Actlabs to monitor precision and bias performance at a rate of 1:20. All independent certified reference data returns were within acceptable limits with no discernible bias. The major element oxides and trace elements

Criteria	JORC Code explanation	Commentary
	<i>precision have been established.</i>	<p>including Rb, Cs, Nb, Ta and Be were analyzed by FUS-ICP and FUS-MS (4Litho-Pegmatite Special) analytical codes which uses a lithium metaborate tetraborate fusion with analysis by ICP and ICPMS.</p> <ul style="list-style-type: none"> Historic specific gravity testwork was determined for every 10th sample by RX17-GP analytical code measured on the pulp by a gas pycnometer.
Verification of sampling and assaying	<ul style="list-style-type: none"> The verification of significant intersections by either independent or alternative company personnel. The use of twinned holes. Documentation of primary data, data entry procedures, data verification, data storage (physical and electronic) protocols. Discuss any adjustment to assay data. 	<ul style="list-style-type: none"> NA
Location of data points	<ul style="list-style-type: none"> Accuracy and quality of surveys used to locate drill holes (collar and down-hole surveys), trenches, mine workings and other locations used in Mineral Resource estimation. Specification of the grid system used. Quality and adequacy of topographic control. 	<ul style="list-style-type: none"> A GPS reading was taken for each sample location using UTM NAD83 Zone16 (for Seymour); waypoint averaging or dGPS was performed when possible. Ardiden undertook a Lidar survey of the Seymour area in 2018 (+/- 0.15m) which underpins the local topographic surface. Downhole survey data used a Digital Electronic Multi-shot (DEMS) camera for establishing hole orientation for historic holes. GT1 has used continuous measurement north seeking gyroscope tools with readings retained every 5m downhole.
Data spacing and distribution	<ul style="list-style-type: none"> Data spacing for reporting of Exploration Results. Whether the data spacing and distribution is sufficient to establish the degree of geological and grade continuity appropriate for the Mineral Resource and Ore Reserve estimation procedure(s) and classifications applied. Whether sample compositing has been applied. 	<ul style="list-style-type: none"> The Seymour North Aubry pegmatites have variable drill spacing from 20Ex20m in the shallower areas (<150m) of the deposit to 50mEx50mN at lower depths (150-250m) 1m compositing was applied to the historic Seymour Mineral Resource.
Orientation of data in relation to geological structure	<ul style="list-style-type: none"> Whether the orientation of sampling achieves unbiased sampling of possible structures and the extent to which this is known, considering the deposit type. If the relationship between the drilling orientation and the orientation of key mineralised structures is considered to have introduced a sampling bias, this should be assessed and reported if material. 	<ul style="list-style-type: none"> GT1 drill samples were drilled close to perpendicular to the strike of the pegmatite unit and sampled the entire length of the pegmatite as well including several metres into the mafic country rock either side of the pegmatite. Grab and trench samples were taken where outcrop was available. All attempts were made to ensure trench samples represented traverses across strike of the pegmatite.
Sample security	<ul style="list-style-type: none"> The measures taken to ensure sample security. 	<ul style="list-style-type: none"> All core and samples were supervised and secured in a locked vehicle, warehouse, or container until delivered to Actlabs in Thunder Bay for cutting, preparation and analysis.
Audits or reviews	<ul style="list-style-type: none"> The results of any audits or reviews of sampling techniques and data. 	<ul style="list-style-type: none"> NA

Section 2 Reporting of Exploration Results

Criteria	JORC Code explanation	Commentary
Mineral tenement and land tenure status	<ul style="list-style-type: none"> Type, reference name/number, location and ownership including agreements or material issues with third parties such as joint ventures, partnerships, overriding royalties, native title interests, historical sites, wilderness or national park and environmental settings. The security of the tenure held at the time of reporting along with any known impediments to obtaining a licence to operate in the area. 	<ul style="list-style-type: none"> Joint Venture between Green Technology Metals (ASX:GT1) 80% and Ardiden Ltd (ASX:ADV) 20%. Seymour Lithium Asset consists of 744 Cell Claims (Exploration Licences) with a total claim area of 15,058 ha. All Cell Claims are in good standing An Active Exploration Permit exists over the Seymour Lithium Assets An Early Exploration Agreement is current with the Whitesand First Nation who are supportive of GT1 exploration activities.
Exploration done by other parties	<ul style="list-style-type: none"> Acknowledgment and appraisal of exploration by other parties. 	<ul style="list-style-type: none"> Regional exploration for lithium deposits commenced in the 1950's. In 1957, local prospector, Mr Nelson Aubry, discovered the North Aubry and the South Aubry pegmatites. Geological mapping by the Ontario Department of Mines commenced in 1959 and was completed in 1962 (Pye, 1968), with the publication of "Map 2100 Crescent Lake Area" in 1965. From the late 1950's to 2002, exploration by the Ontario Department of Mines was generally restricted to geological mapping and surface sampling, although some minor drilling was completed to test the North Aubry pegmatite in late 1957 (Rees, 2011). In 2001, Linear Resources Inc. ("Linear Resources") obtained the Seymour Lake Project with an initial focus on the project's tantalum potential. In 2002, a 23-diamond drill-hole campaign was completed at North Aubry, and a further 8 diamond drill-holes at South Aubry. In 2008, Linear Resources completed a regional soil-sampling program which resulted in the identification of a number soil geochemical anomalies. Based on these anomalies, another drilling campaign (completed in 2009), with 12 diamond drill-holes at North Aubry, 2 diamond drill-holes at South Aubry, and further 5 diamond drill-holes peripheral to the Aubry prospects designed to test the main 2008 soil geochemical anomalies. Little work was undertaken between 2010 and 2016 until Ardiden acquired the project from Linear Resources in 2016. Further drilling was carried out by Ardiden between 2017 and 2018 resulting in the completion of an updated mineral resource estimate of the Aubry pegmatites in 2018. Ground Penetrating Radar (GPR) was also undertaken by Ardiden in 2018 to test any further exploration potential beyond the current Aubry pegmatite delineating numerous targets.

Criteria	JORC Code explanation	Commentary																																																																																																																																																																													
Geology	<ul style="list-style-type: none"> <i>Deposit type, geological setting and style of mineralisation.</i> 	<ul style="list-style-type: none"> Regional Geology: The general geological setting of the Seymour Lithium Asset consists of the Precambrian Canadian Shield that underlies approximately 60% of Ontario. The Shield can be divided into three major geological and physiographic regions, from the oldest in the northwest to the youngest in the southeast. Local Geology: The Seymour Lithium Asset is located within the eastern part of the Wabigoon Subprovince, near the boundary with the English River Subprovince to the north. These subprovinces are part of the Superior Craton, comprised mainly of Archaean rocks but also containing some Mesoproterozoic rocks such as the Nipigon Diabase. Bedrock Geology: The bedrock is best exposed along the flanks of steep-sided valleys scoured by glaciers during the recent ice ages. The exposed bedrock is commonly metamorphosed basaltic rock, of which some varieties have well-preserved pillows that have been intensely flattened in areas of high tectonic strain. Intercalated between layers of basalt are lesser amounts of schists derived from sedimentary rocks and lesser rocks having felsic volcanic protoliths. These rocks are typical of the Wabigoon Subprovince, host to most of the pegmatites in the region. Ore Geology: Pegmatites are reasonably common in the region intruding the enclosing host rocks after metamorphism, evident from the manner in which the pegmatites cut across the well developed foliation within the metamorphosed host rocks. This post-dating relationship is supported by radiometric dating; an age of 2666 ± 6 Ma is given for the timing of intrusion of the pegmatites (Breaks, et al., 2006). 																																																																																																																																																																													
Drill hole Information	<ul style="list-style-type: none"> A summary of all information material to the understanding of the exploration results including a tabulation of the following information for all Material drill holes: <ul style="list-style-type: none"> easting and northing of the drill hole collar elevation or RL (Reduced Level – elevation above sea level in metres) of the drill hole collar dip and azimuth of the hole down hole length and interception depth hole length. If the exclusion of this information is justified on the basis that the information is not Material and this exclusion does not detract from the understanding of the report, the Competent Person should clearly explain why this is the case. 	<ul style="list-style-type: none"> A total of 199 diamond holes, on a nominal 20m x 20m grid, have been used in the resource modelling at North Aubry and South Aubry. A total of 130 holes were drilled by Ardiden, with the previous owners Linear drilling 42 holes, some of which were excluded from this estimate due to missing logging, assay reliability or re-drills. The 2018 Ardiden drilling was completed by Rugged Aviation Inc. using BTW coring equipment producing 4.20 cm diameter core. <table border="1" style="width: 100%; border-collapse: collapse; text-align: center;"> <thead> <tr> <th colspan="10">Drilling Used in Mineral Resource</th> </tr> <tr> <th rowspan="2">Company</th> <th colspan="3">Linear</th> <th colspan="3">Ardiden</th> <th colspan="3">Green Tech</th> <th rowspan="2">Total</th> </tr> <tr> <th>Linear</th> <th>Ardiden</th> <th>Green Tech</th> <th>Linear</th> <th>Ardiden</th> <th>Green Tech</th> <th>Linear</th> <th>Ardiden</th> <th>Green Tech</th> </tr> </thead> <tbody> <tr> <td></td> <td colspan="9">Holes</td> <td></td> </tr> <tr> <td></td> <td>DDH</td> <td>DDH</td> <td>DDH</td> <td>DDH</td> <td>DDH</td> <td>DDH</td> <td>DDH</td> <td>DDH</td> <td>DDH</td> <td></td> </tr> <tr> <td></td> <td colspan="9">Metres</td> <td></td> </tr> <tr> <td>Year</td> <td>DDH</td> <td>DDH</td> <td>DDH</td> <td>DDH</td> <td>DDH</td> <td>DDH</td> <td>DDH</td> <td>DDH</td> <td>DDH</td> <td></td> </tr> <tr> <td>2002</td> <td>30</td> <td>0</td> <td>0</td> <td>30</td> <td>1,677.45</td> <td>-</td> <td>-</td> <td>-</td> <td>-</td> <td>1,677.45</td> </tr> <tr> <td>2009</td> <td>12</td> <td>0</td> <td>0</td> <td>12</td> <td>1,573.50</td> <td>-</td> <td>-</td> <td>-</td> <td>-</td> <td>1,573.50</td> </tr> <tr> <td>2016</td> <td>0</td> <td>29</td> <td>0</td> <td>29</td> <td>-</td> <td>1,950.00</td> <td>-</td> <td>-</td> <td>-</td> <td>1,950.00</td> </tr> <tr> <td>2017</td> <td>0</td> <td>69</td> <td>0</td> <td>69</td> <td>-</td> <td>7,864.29</td> <td>-</td> <td>-</td> <td>-</td> <td>7,864.29</td> </tr> <tr> <td>2018</td> <td>0</td> <td>37</td> <td>0</td> <td>37</td> <td>-</td> <td>6,564.71</td> <td>-</td> <td>-</td> <td>-</td> <td>6,564.71</td> </tr> <tr> <td>2021</td> <td>0</td> <td>0</td> <td>1</td> <td>1</td> <td>-</td> <td>-</td> <td>-</td> <td>341.00</td> <td>-</td> <td>341.00</td> </tr> <tr> <td>2022</td> <td>0</td> <td>0</td> <td>21</td> <td>21</td> <td>-</td> <td>-</td> <td>-</td> <td>7,950.69</td> <td>-</td> <td>7,950.69</td> </tr> <tr> <td>Grand Total</td> <td>42</td> <td>136</td> <td>21</td> <td>199</td> <td>3,250.95</td> <td>16,379.00</td> <td>-</td> <td>8,291.69</td> <td>-</td> <td>26,244.59</td> </tr> <tr> <td>Proportion</td> <td>21%</td> <td>68%</td> <td>11%</td> <td>12%</td> <td>12%</td> <td>62%</td> <td>-</td> <td>32%</td> <td>-</td> <td>100%</td> </tr> </tbody> </table> <p style="font-size: small; margin-top: 5px;">18 holes were excluded for the MRE Excluded holes were largely from 2009 and 2002 where assaying and/or geological data was missing from the record or the holes were re-drills.</p>	Drilling Used in Mineral Resource										Company	Linear			Ardiden			Green Tech			Total	Linear	Ardiden	Green Tech	Linear	Ardiden	Green Tech	Linear	Ardiden	Green Tech		Holes											DDH	DDH	DDH	DDH	DDH	DDH	DDH	DDH	DDH			Metres										Year	DDH	DDH	DDH	DDH	DDH	DDH	DDH	DDH	DDH		2002	30	0	0	30	1,677.45	-	-	-	-	1,677.45	2009	12	0	0	12	1,573.50	-	-	-	-	1,573.50	2016	0	29	0	29	-	1,950.00	-	-	-	1,950.00	2017	0	69	0	69	-	7,864.29	-	-	-	7,864.29	2018	0	37	0	37	-	6,564.71	-	-	-	6,564.71	2021	0	0	1	1	-	-	-	341.00	-	341.00	2022	0	0	21	21	-	-	-	7,950.69	-	7,950.69	Grand Total	42	136	21	199	3,250.95	16,379.00	-	8,291.69	-	26,244.59	Proportion	21%	68%	11%	12%	12%	62%	-	32%	-	100%
Drilling Used in Mineral Resource																																																																																																																																																																															
Company	Linear			Ardiden			Green Tech			Total																																																																																																																																																																					
	Linear	Ardiden	Green Tech	Linear	Ardiden	Green Tech	Linear	Ardiden	Green Tech																																																																																																																																																																						
	Holes																																																																																																																																																																														
	DDH	DDH	DDH	DDH	DDH	DDH	DDH	DDH	DDH																																																																																																																																																																						
	Metres																																																																																																																																																																														
Year	DDH	DDH	DDH	DDH	DDH	DDH	DDH	DDH	DDH																																																																																																																																																																						
2002	30	0	0	30	1,677.45	-	-	-	-	1,677.45																																																																																																																																																																					
2009	12	0	0	12	1,573.50	-	-	-	-	1,573.50																																																																																																																																																																					
2016	0	29	0	29	-	1,950.00	-	-	-	1,950.00																																																																																																																																																																					
2017	0	69	0	69	-	7,864.29	-	-	-	7,864.29																																																																																																																																																																					
2018	0	37	0	37	-	6,564.71	-	-	-	6,564.71																																																																																																																																																																					
2021	0	0	1	1	-	-	-	341.00	-	341.00																																																																																																																																																																					
2022	0	0	21	21	-	-	-	7,950.69	-	7,950.69																																																																																																																																																																					
Grand Total	42	136	21	199	3,250.95	16,379.00	-	8,291.69	-	26,244.59																																																																																																																																																																					
Proportion	21%	68%	11%	12%	12%	62%	-	32%	-	100%																																																																																																																																																																					

Criteria	JORC Code explanation	Commentary																																																																																																																																																																																																																																																																																																																																									
		<ul style="list-style-type: none"> The earlier drill holes were either vertical or inclined towards the west. Once the pegmatite was determined to be dipping towards the north-east, the later drill holes were inclined towards the south-west <ul style="list-style-type: none"> Green Technology Metals Ltd has completed 47 NQ diamond holes since December 2021 (21 of which are included in the June 2022 Mineral Resource estimate) with the following collar coordinates: <table border="1" data-bbox="1052 583 1481 1318"> <thead> <tr> <th>HOLE_ID</th> <th>Easting</th> <th>Northing</th> <th>RL</th> <th>Dip</th> <th>Azimuth</th> <th>DrillDepth</th> </tr> </thead> <tbody> <tr><td>GTDD-21-0004</td><td>397,241</td><td>5,585,452</td><td>388</td><td>-74.31</td><td>208.59</td><td>341</td></tr> <tr><td>GTDD-21-0005</td><td>397,280</td><td>5,585,396</td><td>389</td><td>-79.81</td><td>220.732</td><td>372</td></tr> <tr><td>GTDD-22-0001</td><td>397,013</td><td>5,585,304</td><td>379</td><td>-78.42</td><td>275.68</td><td>201</td></tr> <tr><td>GTDD-22-0002</td><td>397,050</td><td>5,585,389</td><td>373</td><td>-74.82</td><td>191.24</td><td>312</td></tr> <tr><td>GTDD-22-0003</td><td>397,130</td><td>5,585,453</td><td>393</td><td>-77</td><td>193.9</td><td>403</td></tr> <tr><td>GTDD-22-0006</td><td>397,313</td><td>5,585,361</td><td>387</td><td>-69.02</td><td>214.23</td><td>341</td></tr> <tr><td>GTDD-22-0007</td><td>397,367</td><td>5,585,301</td><td>389</td><td>-68.87</td><td>222.15</td><td>336</td></tr> <tr><td>GTDD-22-0008</td><td>397,294</td><td>5,585,473</td><td>389</td><td>-75.93</td><td>221.33</td><td>345</td></tr> <tr><td>GTDD-22-0009</td><td>397,360</td><td>5,585,423</td><td>386</td><td>-81</td><td>218.9</td><td>342</td></tr> <tr><td>GTDD-22-0010</td><td>397,400</td><td>5,585,372</td><td>389</td><td>-69.2</td><td>218.97</td><td>395</td></tr> <tr><td>GTDD-22-0011</td><td>397,461</td><td>5,585,413</td><td>398</td><td>-69.12</td><td>219.05</td><td>453</td></tr> <tr><td>GTDD-22-0012</td><td>397,203</td><td>5,585,475</td><td>392</td><td>-80.8</td><td>212.1</td><td>401</td></tr> <tr><td>GTDD-22-0013</td><td>397,278</td><td>5,585,404</td><td>389</td><td>-80.25</td><td>32.3</td><td>389</td></tr> <tr><td>GTDD-22-0014</td><td>397,250</td><td>5,585,501</td><td>386</td><td>-80.7</td><td>224.4</td><td>450</td></tr> <tr><td>GTDD-22-0015</td><td>397,203</td><td>5,585,475</td><td>392</td><td>-74.61</td><td>212.01</td><td>395</td></tr> <tr><td>GTDD-22-0016</td><td>397,256</td><td>5,585,422</td><td>388</td><td>-76.73</td><td>218.71</td><td>350</td></tr> <tr><td>GTDD-22-0017</td><td>398,418</td><td>5,585,109</td><td>352</td><td>-72</td><td>140</td><td>180</td></tr> <tr><td>GTDD-22-0019</td><td>397,542</td><td>5,585,678</td><td>369</td><td>-74.73</td><td>221.99</td><td>525</td></tr> <tr><td>GTDD-22-0020</td><td>398,355</td><td>5,585,010</td><td>340</td><td>-46.71</td><td>138.59</td><td>183</td></tr> <tr><td>GTDD-22-0022</td><td>398,355</td><td>5,585,010</td><td>340</td><td>-65.584</td><td>129.88</td><td>123</td></tr> <tr><td>GTDD-22-0023</td><td>398,418</td><td>5,585,109</td><td>352</td><td>-58.08</td><td>142.91</td><td>181</td></tr> <tr><td>GTDD-22-0024</td><td>398,571</td><td>5,585,113</td><td>329</td><td>-59.846</td><td>310.163</td><td>361</td></tr> <tr><td>GTDD-22-0026</td><td>398,711</td><td>5,585,361</td><td>334</td><td>-61.11</td><td>290.4</td><td>346</td></tr> <tr><td>GTDD-22-0060</td><td>396,625</td><td>5,584,899</td><td>351</td><td>-60.86</td><td>216.35</td><td>231</td></tr> <tr><td>GTDD-22-0064</td><td>396,861</td><td>5,584,636</td><td>370</td><td>-60.057</td><td>215.773</td><td>162</td></tr> <tr><td>GTDD-22-0066</td><td>396,954</td><td>5,584,949</td><td>390</td><td>-59.78</td><td>213.7</td><td>135</td></tr> <tr><td>GTDD-22-0067</td><td>396,945</td><td>5,584,891</td><td>383</td><td>-58.99</td><td>216.28</td><td>156</td></tr> <tr><td>GTDD-22-0068</td><td>396,993</td><td>5,584,937</td><td>395</td><td>-59.13</td><td>209.75</td><td>102</td></tr> <tr><td>GTDD-22-0091</td><td>396,597</td><td>5,584,938</td><td>347</td><td>-60.19</td><td>234.38</td><td>206</td></tr> <tr><td>GTDD-22-0093</td><td>396,631</td><td>5,584,828</td><td>347</td><td>-60.38</td><td>220.4</td><td>200</td></tr> <tr><td>GTDD-22-0111</td><td>396,855</td><td>5,584,706</td><td>379</td><td>-60.27</td><td>216.2</td><td>183</td></tr> <tr><td>GTDD-22-0115</td><td>396,919</td><td>5,584,783</td><td>379</td><td>-58.66</td><td>210.84</td><td>159</td></tr> <tr><td>GTDD-22-0128</td><td>397,345</td><td>5,585,680</td><td>382</td><td>-72.42</td><td>209.08</td><td>474</td></tr> <tr><td>GTDD-22-0129</td><td>397,767</td><td>5,585,707</td><td>388</td><td>-60.4</td><td>217.7</td><td>312</td></tr> <tr><td>GTDD-22-0136</td><td>396,501</td><td>5,584,275</td><td>354</td><td>-61.73</td><td>220.17</td><td>249</td></tr> <tr><td>GTDD-22-0317</td><td>397,130</td><td>5,585,453</td><td>392</td><td>-81.2</td><td>234.37</td><td>396</td></tr> <tr><td>GTDD-22-0318</td><td>397,130</td><td>5,585,453</td><td>392</td><td>-64.3</td><td>227.13</td><td>372</td></tr> <tr><td>GTDD-22-0318A</td><td>397,130</td><td>5,585,453</td><td>392</td><td>-84.48</td><td>267.61</td><td>78</td></tr> <tr><td>GTDD-22-0319</td><td>396,814</td><td>5,584,500</td><td>369</td><td>-59.3</td><td>219.62</td><td>330</td></tr> <tr><td>GTDD-22-0320</td><td>397,542</td><td>5,585,678</td><td>404</td><td>-65</td><td>230</td><td>510</td></tr> <tr><td>GTDD-22-0323</td><td>397,217</td><td>5,585,551</td><td>382</td><td>-70.15</td><td>215.84</td><td>412</td></tr> <tr><td>GTDD-22-0327</td><td>397,178</td><td>5,585,583</td><td>392</td><td>-80.14</td><td>228.78</td><td>420</td></tr> <tr><td>GTDD-22-0328</td><td>397,281</td><td>5,585,706</td><td>383</td><td>-75</td><td>220</td><td>420</td></tr> <tr><td>GTDD-22-0329</td><td>397,176</td><td>5,585,585</td><td>387</td><td>-72.51</td><td>264.95</td><td>387</td></tr> <tr><td>GTDD-22-0330</td><td>397,073</td><td>5,585,722</td><td>374</td><td>-75.15</td><td>218.73</td><td>374</td></tr> <tr><td>GTDD-22-0331</td><td>396,819</td><td>5,584,226</td><td>365</td><td>-64.73</td><td>215.25</td><td>152</td></tr> </tbody> </table>	HOLE_ID	Easting	Northing	RL	Dip	Azimuth	DrillDepth	GTDD-21-0004	397,241	5,585,452	388	-74.31	208.59	341	GTDD-21-0005	397,280	5,585,396	389	-79.81	220.732	372	GTDD-22-0001	397,013	5,585,304	379	-78.42	275.68	201	GTDD-22-0002	397,050	5,585,389	373	-74.82	191.24	312	GTDD-22-0003	397,130	5,585,453	393	-77	193.9	403	GTDD-22-0006	397,313	5,585,361	387	-69.02	214.23	341	GTDD-22-0007	397,367	5,585,301	389	-68.87	222.15	336	GTDD-22-0008	397,294	5,585,473	389	-75.93	221.33	345	GTDD-22-0009	397,360	5,585,423	386	-81	218.9	342	GTDD-22-0010	397,400	5,585,372	389	-69.2	218.97	395	GTDD-22-0011	397,461	5,585,413	398	-69.12	219.05	453	GTDD-22-0012	397,203	5,585,475	392	-80.8	212.1	401	GTDD-22-0013	397,278	5,585,404	389	-80.25	32.3	389	GTDD-22-0014	397,250	5,585,501	386	-80.7	224.4	450	GTDD-22-0015	397,203	5,585,475	392	-74.61	212.01	395	GTDD-22-0016	397,256	5,585,422	388	-76.73	218.71	350	GTDD-22-0017	398,418	5,585,109	352	-72	140	180	GTDD-22-0019	397,542	5,585,678	369	-74.73	221.99	525	GTDD-22-0020	398,355	5,585,010	340	-46.71	138.59	183	GTDD-22-0022	398,355	5,585,010	340	-65.584	129.88	123	GTDD-22-0023	398,418	5,585,109	352	-58.08	142.91	181	GTDD-22-0024	398,571	5,585,113	329	-59.846	310.163	361	GTDD-22-0026	398,711	5,585,361	334	-61.11	290.4	346	GTDD-22-0060	396,625	5,584,899	351	-60.86	216.35	231	GTDD-22-0064	396,861	5,584,636	370	-60.057	215.773	162	GTDD-22-0066	396,954	5,584,949	390	-59.78	213.7	135	GTDD-22-0067	396,945	5,584,891	383	-58.99	216.28	156	GTDD-22-0068	396,993	5,584,937	395	-59.13	209.75	102	GTDD-22-0091	396,597	5,584,938	347	-60.19	234.38	206	GTDD-22-0093	396,631	5,584,828	347	-60.38	220.4	200	GTDD-22-0111	396,855	5,584,706	379	-60.27	216.2	183	GTDD-22-0115	396,919	5,584,783	379	-58.66	210.84	159	GTDD-22-0128	397,345	5,585,680	382	-72.42	209.08	474	GTDD-22-0129	397,767	5,585,707	388	-60.4	217.7	312	GTDD-22-0136	396,501	5,584,275	354	-61.73	220.17	249	GTDD-22-0317	397,130	5,585,453	392	-81.2	234.37	396	GTDD-22-0318	397,130	5,585,453	392	-64.3	227.13	372	GTDD-22-0318A	397,130	5,585,453	392	-84.48	267.61	78	GTDD-22-0319	396,814	5,584,500	369	-59.3	219.62	330	GTDD-22-0320	397,542	5,585,678	404	-65	230	510	GTDD-22-0323	397,217	5,585,551	382	-70.15	215.84	412	GTDD-22-0327	397,178	5,585,583	392	-80.14	228.78	420	GTDD-22-0328	397,281	5,585,706	383	-75	220	420	GTDD-22-0329	397,176	5,585,585	387	-72.51	264.95	387	GTDD-22-0330	397,073	5,585,722	374	-75.15	218.73	374	GTDD-22-0331	396,819	5,584,226	365	-64.73	215.25	152
HOLE_ID	Easting	Northing	RL	Dip	Azimuth	DrillDepth																																																																																																																																																																																																																																																																																																																																					
GTDD-21-0004	397,241	5,585,452	388	-74.31	208.59	341																																																																																																																																																																																																																																																																																																																																					
GTDD-21-0005	397,280	5,585,396	389	-79.81	220.732	372																																																																																																																																																																																																																																																																																																																																					
GTDD-22-0001	397,013	5,585,304	379	-78.42	275.68	201																																																																																																																																																																																																																																																																																																																																					
GTDD-22-0002	397,050	5,585,389	373	-74.82	191.24	312																																																																																																																																																																																																																																																																																																																																					
GTDD-22-0003	397,130	5,585,453	393	-77	193.9	403																																																																																																																																																																																																																																																																																																																																					
GTDD-22-0006	397,313	5,585,361	387	-69.02	214.23	341																																																																																																																																																																																																																																																																																																																																					
GTDD-22-0007	397,367	5,585,301	389	-68.87	222.15	336																																																																																																																																																																																																																																																																																																																																					
GTDD-22-0008	397,294	5,585,473	389	-75.93	221.33	345																																																																																																																																																																																																																																																																																																																																					
GTDD-22-0009	397,360	5,585,423	386	-81	218.9	342																																																																																																																																																																																																																																																																																																																																					
GTDD-22-0010	397,400	5,585,372	389	-69.2	218.97	395																																																																																																																																																																																																																																																																																																																																					
GTDD-22-0011	397,461	5,585,413	398	-69.12	219.05	453																																																																																																																																																																																																																																																																																																																																					
GTDD-22-0012	397,203	5,585,475	392	-80.8	212.1	401																																																																																																																																																																																																																																																																																																																																					
GTDD-22-0013	397,278	5,585,404	389	-80.25	32.3	389																																																																																																																																																																																																																																																																																																																																					
GTDD-22-0014	397,250	5,585,501	386	-80.7	224.4	450																																																																																																																																																																																																																																																																																																																																					
GTDD-22-0015	397,203	5,585,475	392	-74.61	212.01	395																																																																																																																																																																																																																																																																																																																																					
GTDD-22-0016	397,256	5,585,422	388	-76.73	218.71	350																																																																																																																																																																																																																																																																																																																																					
GTDD-22-0017	398,418	5,585,109	352	-72	140	180																																																																																																																																																																																																																																																																																																																																					
GTDD-22-0019	397,542	5,585,678	369	-74.73	221.99	525																																																																																																																																																																																																																																																																																																																																					
GTDD-22-0020	398,355	5,585,010	340	-46.71	138.59	183																																																																																																																																																																																																																																																																																																																																					
GTDD-22-0022	398,355	5,585,010	340	-65.584	129.88	123																																																																																																																																																																																																																																																																																																																																					
GTDD-22-0023	398,418	5,585,109	352	-58.08	142.91	181																																																																																																																																																																																																																																																																																																																																					
GTDD-22-0024	398,571	5,585,113	329	-59.846	310.163	361																																																																																																																																																																																																																																																																																																																																					
GTDD-22-0026	398,711	5,585,361	334	-61.11	290.4	346																																																																																																																																																																																																																																																																																																																																					
GTDD-22-0060	396,625	5,584,899	351	-60.86	216.35	231																																																																																																																																																																																																																																																																																																																																					
GTDD-22-0064	396,861	5,584,636	370	-60.057	215.773	162																																																																																																																																																																																																																																																																																																																																					
GTDD-22-0066	396,954	5,584,949	390	-59.78	213.7	135																																																																																																																																																																																																																																																																																																																																					
GTDD-22-0067	396,945	5,584,891	383	-58.99	216.28	156																																																																																																																																																																																																																																																																																																																																					
GTDD-22-0068	396,993	5,584,937	395	-59.13	209.75	102																																																																																																																																																																																																																																																																																																																																					
GTDD-22-0091	396,597	5,584,938	347	-60.19	234.38	206																																																																																																																																																																																																																																																																																																																																					
GTDD-22-0093	396,631	5,584,828	347	-60.38	220.4	200																																																																																																																																																																																																																																																																																																																																					
GTDD-22-0111	396,855	5,584,706	379	-60.27	216.2	183																																																																																																																																																																																																																																																																																																																																					
GTDD-22-0115	396,919	5,584,783	379	-58.66	210.84	159																																																																																																																																																																																																																																																																																																																																					
GTDD-22-0128	397,345	5,585,680	382	-72.42	209.08	474																																																																																																																																																																																																																																																																																																																																					
GTDD-22-0129	397,767	5,585,707	388	-60.4	217.7	312																																																																																																																																																																																																																																																																																																																																					
GTDD-22-0136	396,501	5,584,275	354	-61.73	220.17	249																																																																																																																																																																																																																																																																																																																																					
GTDD-22-0317	397,130	5,585,453	392	-81.2	234.37	396																																																																																																																																																																																																																																																																																																																																					
GTDD-22-0318	397,130	5,585,453	392	-64.3	227.13	372																																																																																																																																																																																																																																																																																																																																					
GTDD-22-0318A	397,130	5,585,453	392	-84.48	267.61	78																																																																																																																																																																																																																																																																																																																																					
GTDD-22-0319	396,814	5,584,500	369	-59.3	219.62	330																																																																																																																																																																																																																																																																																																																																					
GTDD-22-0320	397,542	5,585,678	404	-65	230	510																																																																																																																																																																																																																																																																																																																																					
GTDD-22-0323	397,217	5,585,551	382	-70.15	215.84	412																																																																																																																																																																																																																																																																																																																																					
GTDD-22-0327	397,178	5,585,583	392	-80.14	228.78	420																																																																																																																																																																																																																																																																																																																																					
GTDD-22-0328	397,281	5,585,706	383	-75	220	420																																																																																																																																																																																																																																																																																																																																					
GTDD-22-0329	397,176	5,585,585	387	-72.51	264.95	387																																																																																																																																																																																																																																																																																																																																					
GTDD-22-0330	397,073	5,585,722	374	-75.15	218.73	374																																																																																																																																																																																																																																																																																																																																					
GTDD-22-0331	396,819	5,584,226	365	-64.73	215.25	152																																																																																																																																																																																																																																																																																																																																					
Data aggregation methods	<ul style="list-style-type: none"> In reporting Exploration Results, weighting averaging techniques, maximum and/or minimum grade truncations (eg cutting of high grades) and cut-off grades are usually Material and should be stated. Where aggregate intercepts incorporate short lengths of high grade results and longer lengths of low grade results, the procedure used for such aggregation should be stated and some typical examples of such aggregations should be shown in detail. The assumptions used for any reporting of metal equivalent values should be clearly stated. 	<ul style="list-style-type: none"> length weighted averages and all resource estimates are tonnage weighted averages Grade cut-offs have not been incorporated. No metal equivalent values are quoted. 																																																																																																																																																																																																																																																																																																																																									
Relationship between mineralisation widths and intercept lengths	<ul style="list-style-type: none"> These relationships are particularly important in the reporting of Exploration Results. If the geometry of the mineralisation with respect to the drill hole angle is known, its nature should be reported. If it is not known and only the down hole 	<ul style="list-style-type: none"> The historic reported results are stated as down hole lengths. The historic pierce angle of the drilling with the pegmatite varies hole by hole so all intersection widths are longer than true widths. The resource modelling considers the 																																																																																																																																																																																																																																																																																																																																									

Criteria	JORC Code explanation	Commentary
	<p><i>lengths are reported, there should be a clear statement to this effect (eg 'down hole length, true width not known').</i></p>	<p>intersections in 3D and adjusts accordingly.</p> <ul style="list-style-type: none"> Holes drilled by GT1 attempt to pierce the mineralised pegmatite approximately perpendicular to strike, and therefore, the downhole intercepts reported are approximately equivalent to the true width of the mineralisation. Trenches are representative widths of the exposed pegmatite outcrop. Some exposure may not be a complete representation of the total pegmatite width due to recent glacial deposit cover limiting the available material to be sampled.
Diagrams	<ul style="list-style-type: none"> <i>Appropriate maps and sections (with scales) and tabulations of intercepts should be included for any significant discovery being reported These should include, but not be limited to a plan view of drill hole collar locations and appropriate sectional views.</i> 	<ul style="list-style-type: none"> The appropriate maps are included in the announcement.
Balanced reporting	<ul style="list-style-type: none"> <i>Where comprehensive reporting of all Exploration Results is not practicable, representative reporting of both low and high grades and/or widths should be practiced to avoid misleading reporting of Exploration Results.</i> 	<ul style="list-style-type: none"> All historic data has been reported. GT1 summarised assay results are listed below:

Criteria	JORC Code explanation	Commentary																																																																																																																																																																																																																																																																																																																																																																																																																																																																																																																																																																																																																																																																																																																																																																																																																																																																																																																																																																																																																																																																																																																																			
		<table border="1"> <thead> <tr> <th>HOLEID</th> <th>Existing</th> <th>Nothing</th> <th>Ep</th> <th>Asst</th> <th>From</th> <th>To</th> <th>Interval</th> <th>L20%</th> <th>including</th> </tr> </thead> <tbody> <tr><td>GTDD-21-0004</td><td>397,241.00</td><td>5,585,452.00</td><td>74</td><td>209</td><td>0.0</td><td>243.5</td><td>244.0</td><td>0.09</td><td></td></tr> <tr><td>GTDD-21-0004</td><td>397,241.00</td><td>5,585,452.00</td><td>74</td><td>209</td><td>284.0</td><td>284.5</td><td>42.7</td><td>1.54</td><td>1.54m @ 2.75% Li2O from 285m</td></tr> <tr><td>GTDD-21-0004</td><td>397,241.00</td><td>5,585,452.00</td><td>74</td><td>209</td><td>284.0</td><td>341.0</td><td>57.0</td><td>0.09</td><td></td></tr> <tr><td>GTDD-21-0005</td><td>397,280.00</td><td>5,585,396.00</td><td>80</td><td>221</td><td>0.0</td><td>245.0</td><td>245.0</td><td>0.09</td><td></td></tr> <tr><td>GTDD-21-0005</td><td>397,280.00</td><td>5,585,396.00</td><td>80</td><td>221</td><td>245.0</td><td>251.7</td><td>6.7</td><td>1.46</td><td>1.46m @ 2.08% Li2O from 245.0m</td></tr> <tr><td>GTDD-21-0005</td><td>397,280.00</td><td>5,585,396.00</td><td>80</td><td>221</td><td>251.0</td><td>265.0</td><td>14.0</td><td>0.17</td><td></td></tr> <tr><td>GTDD-21-0005</td><td>397,280.00</td><td>5,585,396.00</td><td>80</td><td>221</td><td>265.0</td><td>266.0</td><td>1.0</td><td>0.88</td><td></td></tr> <tr><td>GTDD-21-0005</td><td>397,280.00</td><td>5,585,396.00</td><td>80</td><td>221</td><td>266.0</td><td>341.0</td><td>75.0</td><td>0.17</td><td></td></tr> <tr><td>GTDD-21-0005</td><td>397,280.00</td><td>5,585,396.00</td><td>80</td><td>221</td><td>341.0</td><td>342.0</td><td>1.0</td><td>1.48</td><td></td></tr> <tr><td>GTDD-22-0001</td><td>397,130.00</td><td>5,585,453.00</td><td>77</td><td>194</td><td>0.0</td><td>231.8</td><td>231.8</td><td>0.09</td><td></td></tr> <tr><td>GTDD-22-0001</td><td>397,130.00</td><td>5,585,453.00</td><td>77</td><td>194</td><td>231.8</td><td>251.0</td><td>19.2</td><td>2.20</td><td>1.90m @ 1.95% Li2O from 231.8m</td></tr> <tr><td>GTDD-22-0001</td><td>397,130.00</td><td>5,585,453.00</td><td>77</td><td>194</td><td>251.0</td><td>304.9</td><td>53.9</td><td>0.17</td><td></td></tr> <tr><td>GTDD-22-0001</td><td>397,130.00</td><td>5,585,453.00</td><td>77</td><td>194</td><td>304.9</td><td>312.0</td><td>7.1</td><td>1.04</td><td></td></tr> <tr><td>GTDD-22-0001</td><td>397,130.00</td><td>5,585,453.00</td><td>77</td><td>194</td><td>312.0</td><td>332.7</td><td>20.7</td><td>0.12</td><td></td></tr> <tr><td>GTDD-22-0001</td><td>397,130.00</td><td>5,585,453.00</td><td>77</td><td>194</td><td>332.7</td><td>339.4</td><td>6.7</td><td>1.48</td><td></td></tr> <tr><td>GTDD-22-0001</td><td>397,130.00</td><td>5,585,453.00</td><td>77</td><td>194</td><td>339.4</td><td>402.9</td><td>63.5</td><td>0.08</td><td></td></tr> <tr><td>GTDD-22-0006</td><td>397,313.00</td><td>5,585,361.00</td><td>69</td><td>214</td><td>0.0</td><td>310.0</td><td>310.0</td><td>0.06</td><td></td></tr> <tr><td>GTDD-22-0006</td><td>397,313.00</td><td>5,585,361.00</td><td>69</td><td>214</td><td>310.0</td><td>313.1</td><td>3.1</td><td>0.79</td><td>1.58m @ 1.21% Li2O from 310.0m</td></tr> <tr><td>GTDD-22-0006</td><td>397,313.00</td><td>5,585,361.00</td><td>69</td><td>214</td><td>313.1</td><td>341.0</td><td>27.9</td><td>0.19</td><td></td></tr> <tr><td>GTDD-22-0008</td><td>397,294.00</td><td>5,585,473.00</td><td>76</td><td>221</td><td>0.0</td><td>345.0</td><td>345.0</td><td>0.11</td><td></td></tr> <tr><td>GTDD-22-0008</td><td>397,294.00</td><td>5,585,473.00</td><td>76</td><td>221</td><td>345.0</td><td>285.0</td><td>285.0</td><td>0.08</td><td></td></tr> <tr><td>GTDD-22-0009</td><td>397,360.00</td><td>5,585,423.00</td><td>81</td><td>219</td><td>287.0</td><td>287.0</td><td>0.0</td><td>0.43</td><td></td></tr> <tr><td>GTDD-22-0009</td><td>397,360.00</td><td>5,585,423.00</td><td>81</td><td>219</td><td>287.0</td><td>291.0</td><td>4.0</td><td>0.16</td><td></td></tr> <tr><td>GTDD-22-0009</td><td>397,360.00</td><td>5,585,423.00</td><td>81</td><td>219</td><td>291.0</td><td>293.0</td><td>2.0</td><td>0.50</td><td></td></tr> <tr><td>GTDD-22-0009</td><td>397,360.00</td><td>5,585,423.00</td><td>81</td><td>219</td><td>293.0</td><td>342.0</td><td>49.0</td><td>0.10</td><td></td></tr> <tr><td>GTDD-22-0010</td><td>397,400.32</td><td>5,585,372.16</td><td>69</td><td>219</td><td>313.0</td><td>323.0</td><td>10.0</td><td>1.89</td><td>1.3m @ 2.85% Li2O from 313.0m</td></tr> <tr><td>GTDD-22-0010</td><td>397,400.32</td><td>5,585,372.16</td><td>69</td><td>219</td><td>323.0</td><td>395.0</td><td>72.0</td><td>0.10</td><td></td></tr> <tr><td>GTDD-22-0011</td><td>397,461.42</td><td>5,585,413.00</td><td>60</td><td>219</td><td>0.0</td><td>432.8</td><td>432.8</td><td>0.10</td><td></td></tr> <tr><td>GTDD-22-0012</td><td>397,203.00</td><td>5,585,475.00</td><td>81</td><td>212</td><td>0.0</td><td>238.0</td><td>238.0</td><td>0.11</td><td></td></tr> <tr><td>GTDD-22-0012</td><td>397,203.00</td><td>5,585,475.00</td><td>81</td><td>212</td><td>238.0</td><td>246.3</td><td>7.3</td><td>1.21</td><td></td></tr> <tr><td>GTDD-22-0012</td><td>397,203.00</td><td>5,585,475.00</td><td>81</td><td>212</td><td>246.3</td><td>275.0</td><td>28.7</td><td>0.12</td><td></td></tr> <tr><td>GTDD-22-0012</td><td>397,203.00</td><td>5,585,475.00</td><td>81</td><td>212</td><td>275.0</td><td>278.0</td><td>3.0</td><td>0.56</td><td></td></tr> <tr><td>GTDD-22-0012</td><td>397,203.00</td><td>5,585,475.00</td><td>81</td><td>212</td><td>278.0</td><td>351.3</td><td>73.3</td><td>0.11</td><td></td></tr> <tr><td>GTDD-22-0012</td><td>397,203.00</td><td>5,585,475.00</td><td>81</td><td>212</td><td>351.3</td><td>364.0</td><td>12.7</td><td>0.76</td><td></td></tr> <tr><td>GTDD-22-0012</td><td>397,203.00</td><td>5,585,475.00</td><td>81</td><td>212</td><td>364.0</td><td>365.5</td><td>1.5</td><td>0.49</td><td></td></tr> <tr><td>GTDD-22-0012</td><td>397,203.00</td><td>5,585,475.00</td><td>81</td><td>212</td><td>365.5</td><td>366.0</td><td>0.5</td><td>0.25</td><td></td></tr> <tr><td>GTDD-22-0012</td><td>397,203.00</td><td>5,585,475.00</td><td>81</td><td>212</td><td>366.0</td><td>368.0</td><td>2.0</td><td>0.48</td><td></td></tr> <tr><td>GTDD-22-0012</td><td>397,203.00</td><td>5,585,475.00</td><td>81</td><td>212</td><td>368.0</td><td>400.0</td><td>32.0</td><td>Unsampled</td><td></td></tr> <tr><td>GTDD-22-0015</td><td>397,203.00</td><td>5,585,475.00</td><td>75</td><td>212</td><td>0.0</td><td>238.0</td><td>238.0</td><td>0.05</td><td></td></tr> <tr><td>GTDD-22-0015</td><td>397,203.00</td><td>5,585,475.00</td><td>75</td><td>212</td><td>238.0</td><td>247.0</td><td>9.0</td><td>1.34</td><td>1.2m @ 1.65% Li2O from 238.0m</td></tr> <tr><td>GTDD-22-0015</td><td>397,203.00</td><td>5,585,475.00</td><td>75</td><td>212</td><td>247.0</td><td>260.0</td><td>13.0</td><td>0.16</td><td></td></tr> <tr><td>GTDD-22-0015</td><td>397,203.00</td><td>5,585,475.00</td><td>75</td><td>212</td><td>260.0</td><td>263.8</td><td>3.8</td><td>1.35</td><td></td></tr> <tr><td>GTDD-22-0015</td><td>397,203.00</td><td>5,585,475.00</td><td>75</td><td>212</td><td>263.8</td><td>277.9</td><td>14.1</td><td>0.18</td><td></td></tr> <tr><td>GTDD-22-0015</td><td>397,203.00</td><td>5,585,475.00</td><td>75</td><td>212</td><td>277.9</td><td>278.6</td><td>0.7</td><td>1.09</td><td></td></tr> <tr><td>GTDD-22-0015</td><td>397,203.00</td><td>5,585,475.00</td><td>75</td><td>212</td><td>278.6</td><td>347.3</td><td>68.6</td><td>0.30</td><td></td></tr> <tr><td>GTDD-22-0015</td><td>397,203.00</td><td>5,585,475.00</td><td>75</td><td>212</td><td>347.3</td><td>348.0</td><td>0.7</td><td>1.47</td><td></td></tr> <tr><td>GTDD-22-0015</td><td>397,203.00</td><td>5,585,475.00</td><td>75</td><td>212</td><td>348.0</td><td>377.4</td><td>29.4</td><td>0.44</td><td></td></tr> <tr><td>GTDD-22-0015</td><td>397,203.00</td><td>5,585,475.00</td><td>75</td><td>212</td><td>377.4</td><td>378.7</td><td>1.3</td><td>1.09</td><td></td></tr> <tr><td>GTDD-22-0015</td><td>397,203.00</td><td>5,585,475.00</td><td>75</td><td>212</td><td>378.7</td><td>395.0</td><td>16.3</td><td>0.12</td><td></td></tr> <tr><td>GTDD-22-0016</td><td>397,256.24</td><td>5,585,422.39</td><td>77</td><td>219</td><td>0.0</td><td>244.0</td><td>244.0</td><td>0.22</td><td></td></tr> <tr><td>GTDD-22-0016</td><td>397,256.24</td><td>5,585,422.39</td><td>77</td><td>219</td><td>244.0</td><td>278.3</td><td>34.3</td><td>1.31</td><td>1.5m @ 1.95% Li2O from 253.7m & 1.4m @ 1.77% Li2O & 1.7m @ 1.48% Li2O from 266m & 4.0m @ 2.05% Li2O from 270.0m</td></tr> <tr><td>GTDD-22-0016</td><td>397,256.24</td><td>5,585,422.39</td><td>77</td><td>219</td><td>278.3</td><td>350.0</td><td>71.7</td><td>0.11</td><td></td></tr> <tr><td>GTDD-22-0017</td><td>398,418.07</td><td>5,585,109.32</td><td>72</td><td>140</td><td>0.0</td><td>180.0</td><td>180.0</td><td>0.02</td><td></td></tr> <tr><td>GTDD-22-0020</td><td>398,355.00</td><td>5,585,010.00</td><td>47</td><td>139</td><td>0.0</td><td>183.0</td><td>183.0</td><td>NSI</td><td></td></tr> <tr><td>GTDD-22-0022</td><td>398,355.00</td><td>5,585,010.00</td><td>46</td><td>130</td><td>0.0</td><td>123.0</td><td>123.0</td><td>0.02</td><td></td></tr> <tr><td>GTDD-22-0021</td><td>398,418.07</td><td>5,585,109.32</td><td>72</td><td>142</td><td>0.0</td><td>181.0</td><td>181.0</td><td>0.01</td><td></td></tr> <tr><td>GTDD-22-0024</td><td>398,570.85</td><td>5,585,113.06</td><td>40</td><td>110</td><td>0.0</td><td>361.0</td><td>361.0</td><td>NSI</td><td></td></tr> <tr><td>GTDD-22-0026</td><td>398,710.97</td><td>5,585,360.63</td><td>41</td><td>200</td><td>0.0</td><td>355.0</td><td>355.0</td><td>NSI</td><td></td></tr> <tr><td>GTDD-22-0001</td><td>397,063.00</td><td>5,585,304.00</td><td>76</td><td>276</td><td>0.0</td><td>223.2</td><td>223.2</td><td>0.20</td><td></td></tr> <tr><td>GTDD-22-0001</td><td>397,063.00</td><td>5,585,304.00</td><td>76</td><td>276</td><td>223.2</td><td>133.7</td><td>189.5</td><td>1.77</td><td>7m @ 2.15% Li2O from 124m</td></tr> <tr><td>GTDD-22-0001</td><td>397,063.00</td><td>5,585,304.00</td><td>76</td><td>276</td><td>133.7</td><td>201.0</td><td>67.3</td><td>0.22</td><td></td></tr> <tr><td>GTDD-22-0002</td><td>397,050.00</td><td>5,585,389.00</td><td>75</td><td>191</td><td>0.0</td><td>174.0</td><td>174.0</td><td>0.12</td><td></td></tr> <tr><td>GTDD-22-0002</td><td>397,050.00</td><td>5,585,389.00</td><td>75</td><td>191</td><td>174.0</td><td>189.0</td><td>15.0</td><td>0.48</td><td></td></tr> <tr><td>GTDD-22-0002</td><td>397,050.00</td><td>5,585,389.00</td><td>75</td><td>191</td><td>189.0</td><td>230.0</td><td>41.0</td><td>0.16</td><td></td></tr> <tr><td>GTDD-22-0002</td><td>397,050.00</td><td>5,585,389.00</td><td>75</td><td>191</td><td>230.0</td><td>236.8</td><td>6.8</td><td>1.02</td><td></td></tr> <tr><td>GTDD-22-0002</td><td>397,050.00</td><td>5,585,389.00</td><td>75</td><td>191</td><td>236.8</td><td>292.0</td><td>55.2</td><td>0.16</td><td></td></tr> <tr><td>GTDD-22-0002</td><td>397,050.00</td><td>5,585,389.00</td><td>75</td><td>191</td><td>292.0</td><td>293.0</td><td>1.0</td><td>1.07</td><td></td></tr> <tr><td>GTDD-22-0002</td><td>397,050.00</td><td>5,585,389.00</td><td>75</td><td>191</td><td>293.0</td><td>312.0</td><td>19.0</td><td>0.18</td><td></td></tr> <tr><td>GTDD-22-0013</td><td>397,278.00</td><td>5,585,404.00</td><td>80</td><td>32</td><td>0.0</td><td>302.2</td><td>302.2</td><td>0.22</td><td></td></tr> <tr><td>GTDD-22-0013</td><td>397,278.00</td><td>5,585,404.00</td><td>80</td><td>32</td><td>302.2</td><td>302.2</td><td>0.0</td><td>1.01</td><td></td></tr> <tr><td>GTDD-22-0013</td><td>397,278.00</td><td>5,585,404.00</td><td>80</td><td>32</td><td>302.2</td><td>304.2</td><td>2.0</td><td>0.23</td><td></td></tr> <tr><td>GTDD-22-0013</td><td>397,278.00</td><td>5,585,404.00</td><td>80</td><td>32</td><td>304.2</td><td>322.4</td><td>18.2</td><td>1.10</td><td>1.9m @ 2.05% Li2O from 308.4m & 1.3m @ 2.07% Li2O from 318.0m</td></tr> <tr><td>GTDD-22-0013</td><td>397,278.00</td><td>5,585,404.00</td><td>80</td><td>32</td><td>322.4</td><td>389.0</td><td>66.6</td><td>0.10</td><td></td></tr> <tr><td>GTDD-22-0044</td><td>397,250.00</td><td>5,585,501.00</td><td>81</td><td>224</td><td>0.0</td><td>297.0</td><td>297.0</td><td>0.11</td><td></td></tr> <tr><td>GTDD-22-0044</td><td>397,250.00</td><td>5,585,501.00</td><td>81</td><td>224</td><td>297.0</td><td>295.2</td><td>1.8</td><td>0.85</td><td>2.5m @ 1.95% Li2O from 295.7m</td></tr> <tr><td>GTDD-22-0044</td><td>397,250.00</td><td>5,585,501.00</td><td>81</td><td>224</td><td>295.2</td><td>450.0</td><td>154.8</td><td>0.14</td><td></td></tr> <tr><td>GTDD-22-0129</td><td>397,767.24</td><td>5,585,706.62</td><td>60</td><td>218</td><td>0.0</td><td>312.0</td><td>312.0</td><td>NSI</td><td></td></tr> <tr><td>GTDD-22-0127</td><td>397,130.00</td><td>5,585,453.00</td><td>81</td><td>224</td><td>0.0</td><td>396.0</td><td>396.0</td><td>Pending</td><td></td></tr> <tr><td>GTDD-22-0118</td><td>397,130.00</td><td>5,585,453.00</td><td>64</td><td>227</td><td>0.0</td><td>372.0</td><td>372.0</td><td>Pending</td><td></td></tr> <tr><td>GTDD-22-0318A</td><td>397,130.00</td><td>5,585,453.00</td><td>84</td><td>268</td><td>0.0</td><td>78.0</td><td>78.0</td><td>Pending</td><td></td></tr> <tr><td>GTDD-22-0320</td><td>397,341.24</td><td>5,585,677.86</td><td>60</td><td>200</td><td>0.0</td><td>581.0</td><td>581.0</td><td>Pending</td><td></td></tr> <tr><td>GTDD-22-0064</td><td>396,861.21</td><td>5,584,835.89</td><td>40</td><td>216</td><td>0.0</td><td>162.0</td><td>162.0</td><td>NSI</td><td></td></tr> <tr><td>GTDD-22-0066</td><td>396,954.00</td><td>5,584,849.00</td><td>40</td><td>214</td><td>0.0</td><td>135.0</td><td>135.0</td><td>NSI</td><td></td></tr> <tr><td>GTDD-22-0067</td><td>396,945.00</td><td>5,584,891.88</td><td>59</td><td>216</td><td>0.0</td><td>156.0</td><td>156.0</td><td>NSI</td><td></td></tr> <tr><td>GTDD-22-0068</td><td>396,993.00</td><td>5,584,891.88</td><td>59</td><td>216</td><td>0.0</td><td>102.0</td><td>102.0</td><td>NSI</td><td></td></tr> <tr><td>GTDD-22-0111</td><td>396,865.05</td><td>5,584,706.01</td><td>60</td><td>216</td><td>0.0</td><td>183.0</td><td>183.0</td><td>NSI</td><td></td></tr> <tr><td>GTDD-22-0115</td><td>396,939.32</td><td>5,584,782.84</td><td>59</td><td>211</td><td>0.0</td><td>150.0</td><td>150.0</td><td>NSI</td><td></td></tr> <tr><td>GTDD-22-0019</td><td>397,341.24</td><td>5,585,677.86</td><td>75</td><td>222</td><td>0.0</td><td>525.0</td><td>525.0</td><td>Pending</td><td></td></tr> <tr><td>GTDD-22-0110</td><td>396,813.57</td><td>5,584,499.80</td><td>60</td><td>220</td><td>0.0</td><td>330.0</td><td>330.0</td><td>NSI</td><td></td></tr> <tr><td>GTDD-22-0320</td><td>397,342.00</td><td>5,585,678.00</td><td>65</td><td>230</td><td>482.2</td><td>468.9</td><td>10.7</td><td>1.49</td><td>1.7m @ 1.45% Li2O from 482.0m</td></tr> <tr><td>GTDD-22-0090</td><td>396,625.23</td><td>5,584,898.67</td><td>61</td><td>216</td><td>0.0</td><td>231.0</td><td>231.0</td><td>NSI</td><td></td></tr> <tr><td>GTDD-22-0091</td><td>396,296.28</td><td>5,584,898.67</td><td>60</td><td>214</td><td>0.0</td><td>206.0</td><td>206.0</td><td>NSI</td><td></td></tr> <tr><td>GTDD-22-0093</td><td>396,631.40</td><td>5,584,828.43</td><td>60</td><td>220</td><td>0.0</td><td>68.5</td><td>68.5</td><td>NSI</td><td></td></tr> <tr><td>GTDD-22-0093</td><td>396,631.40</td><td>5,584,828.43</td><td>60</td><td>220</td><td>68.5</td><td>73.1</td><td>4.6</td><td>Pending</td><td>Visual upturn 4%</td></tr> <tr><td>GTDD-22-0094</td><td>396,631.40</td><td>5,584,828.43</td><td>60</td><td>220</td><td>73.1</td><td>200.0</td><td>126.9</td><td>NSI</td><td></td></tr> <tr><td>GTDD-22-0128</td><td>397,345.00</td><td>5,585,680.00</td><td>72</td><td>209</td><td>0.0</td><td>252.3</td><td>252.3</td><td>NSI</td><td></td></tr> <tr><td>GTDD-22-0128</td><td>397,345.00</td><td>5,585,680.00</td><td>72</td><td>209</td><td>252.3</td><td>258.7</td><td>6.4</td><td>0.75</td><td>1.8m @ 1.48% from 253.4m</td></tr> <tr><td>GTDD-22-0128</td><td>397,345.00</td><td>5,585,680.00</td><td>72</td><td>209</td><td>258.7</td><td>312.0</td><td>53.3</td><td>NSI</td><td></td></tr> <tr><td>GTDD-22-0128</td><td>397,345.00</td><td>5,585,680.00</td><td>72</td><td>209</td><td>312.0</td><td>344.9</td><td>32.9</td><td>0.40</td><td>1.4m @ 0.86% from 312.0m</td></tr> <tr><td>GTDD-22-0128</td><td>397,345.00</td><td>5,585,680.00</td><td>72</td><td>209</td><td>344.9</td><td>474.0</td><td>129.1</td><td>NSI</td><td></td></tr> <tr><td>GTDD-22-0136</td><td>396,501.00</td><td>5,584,275.00</td><td>62</td><td>220</td><td>0.0</td><td>240.0</td><td>240.0</td><td>NSI</td><td></td></tr> <tr><td>GTDD-22-0121</td><td>397,216.92</td><td>5,585,551.05</td><td>70</td><td>216</td><td>0.0</td><td>218.0</td><td>218.0</td><td>NSI</td><td></td></tr> <tr><td>GTDD-22-0121</td><td>397,216.92</td><td>5,585,551.05</td><td>70</td><td>216</td><td>218.0</td><td>219.9</td><td>1.9</td><td>0.76</td><td>0.69m @ 1.37% from 218.0m</td></tr> <tr><td>GTDD-22-0121</td><td>397,216.92</td><td>5,585,551.05</td><td>70</td><td>216</td><td>219.9</td><td>370.8</td><td>150.9</td><td>NSI</td><td></td></tr> <tr><td>GTDD-22-0121</td><td>397,216.92</td><td>5,585,551.05</td><td>70</td><td>216</td><td>370.8</td><td>373.3</td><td>2.5</td><td>NSI</td><td></td></tr> <tr><td>GTDD-22-0121</td><td>397,216.92</td><td>5,585,551.05</td><td>70</td><td>216</td><td>373.3</td><td>377.9</td><td>4.6</td><td>NSI</td><td></td></tr> <tr><td>GTDD-22-0321</td><td>397,216.92</td><td>5,585,551.05</td><td>70</td><td>216</td><td>377.9</td><td>385.4</td><td>7.7</td><td>0.93</td><td>1.52m @ 2.08% from 376.4m</td></tr> <tr><td>GTDD-22-0323</td><td>397,216.92</td><td>5,585,551.05</td><td>70</td><td>216</td><td>385.4</td><td>412.0</td><td>26.6</td><td>NSI</td><td></td></tr> <tr><td>GTDD-2</td></tr></tbody></table>	HOLEID	Existing	Nothing	Ep	Asst	From	To	Interval	L20%	including	GTDD-21-0004	397,241.00	5,585,452.00	74	209	0.0	243.5	244.0	0.09		GTDD-21-0004	397,241.00	5,585,452.00	74	209	284.0	284.5	42.7	1.54	1.54m @ 2.75% Li2O from 285m	GTDD-21-0004	397,241.00	5,585,452.00	74	209	284.0	341.0	57.0	0.09		GTDD-21-0005	397,280.00	5,585,396.00	80	221	0.0	245.0	245.0	0.09		GTDD-21-0005	397,280.00	5,585,396.00	80	221	245.0	251.7	6.7	1.46	1.46m @ 2.08% Li2O from 245.0m	GTDD-21-0005	397,280.00	5,585,396.00	80	221	251.0	265.0	14.0	0.17		GTDD-21-0005	397,280.00	5,585,396.00	80	221	265.0	266.0	1.0	0.88		GTDD-21-0005	397,280.00	5,585,396.00	80	221	266.0	341.0	75.0	0.17		GTDD-21-0005	397,280.00	5,585,396.00	80	221	341.0	342.0	1.0	1.48		GTDD-22-0001	397,130.00	5,585,453.00	77	194	0.0	231.8	231.8	0.09		GTDD-22-0001	397,130.00	5,585,453.00	77	194	231.8	251.0	19.2	2.20	1.90m @ 1.95% Li2O from 231.8m	GTDD-22-0001	397,130.00	5,585,453.00	77	194	251.0	304.9	53.9	0.17		GTDD-22-0001	397,130.00	5,585,453.00	77	194	304.9	312.0	7.1	1.04		GTDD-22-0001	397,130.00	5,585,453.00	77	194	312.0	332.7	20.7	0.12		GTDD-22-0001	397,130.00	5,585,453.00	77	194	332.7	339.4	6.7	1.48		GTDD-22-0001	397,130.00	5,585,453.00	77	194	339.4	402.9	63.5	0.08		GTDD-22-0006	397,313.00	5,585,361.00	69	214	0.0	310.0	310.0	0.06		GTDD-22-0006	397,313.00	5,585,361.00	69	214	310.0	313.1	3.1	0.79	1.58m @ 1.21% Li2O from 310.0m	GTDD-22-0006	397,313.00	5,585,361.00	69	214	313.1	341.0	27.9	0.19		GTDD-22-0008	397,294.00	5,585,473.00	76	221	0.0	345.0	345.0	0.11		GTDD-22-0008	397,294.00	5,585,473.00	76	221	345.0	285.0	285.0	0.08		GTDD-22-0009	397,360.00	5,585,423.00	81	219	287.0	287.0	0.0	0.43		GTDD-22-0009	397,360.00	5,585,423.00	81	219	287.0	291.0	4.0	0.16		GTDD-22-0009	397,360.00	5,585,423.00	81	219	291.0	293.0	2.0	0.50		GTDD-22-0009	397,360.00	5,585,423.00	81	219	293.0	342.0	49.0	0.10		GTDD-22-0010	397,400.32	5,585,372.16	69	219	313.0	323.0	10.0	1.89	1.3m @ 2.85% Li2O from 313.0m	GTDD-22-0010	397,400.32	5,585,372.16	69	219	323.0	395.0	72.0	0.10		GTDD-22-0011	397,461.42	5,585,413.00	60	219	0.0	432.8	432.8	0.10		GTDD-22-0012	397,203.00	5,585,475.00	81	212	0.0	238.0	238.0	0.11		GTDD-22-0012	397,203.00	5,585,475.00	81	212	238.0	246.3	7.3	1.21		GTDD-22-0012	397,203.00	5,585,475.00	81	212	246.3	275.0	28.7	0.12		GTDD-22-0012	397,203.00	5,585,475.00	81	212	275.0	278.0	3.0	0.56		GTDD-22-0012	397,203.00	5,585,475.00	81	212	278.0	351.3	73.3	0.11		GTDD-22-0012	397,203.00	5,585,475.00	81	212	351.3	364.0	12.7	0.76		GTDD-22-0012	397,203.00	5,585,475.00	81	212	364.0	365.5	1.5	0.49		GTDD-22-0012	397,203.00	5,585,475.00	81	212	365.5	366.0	0.5	0.25		GTDD-22-0012	397,203.00	5,585,475.00	81	212	366.0	368.0	2.0	0.48		GTDD-22-0012	397,203.00	5,585,475.00	81	212	368.0	400.0	32.0	Unsampled		GTDD-22-0015	397,203.00	5,585,475.00	75	212	0.0	238.0	238.0	0.05		GTDD-22-0015	397,203.00	5,585,475.00	75	212	238.0	247.0	9.0	1.34	1.2m @ 1.65% Li2O from 238.0m	GTDD-22-0015	397,203.00	5,585,475.00	75	212	247.0	260.0	13.0	0.16		GTDD-22-0015	397,203.00	5,585,475.00	75	212	260.0	263.8	3.8	1.35		GTDD-22-0015	397,203.00	5,585,475.00	75	212	263.8	277.9	14.1	0.18		GTDD-22-0015	397,203.00	5,585,475.00	75	212	277.9	278.6	0.7	1.09		GTDD-22-0015	397,203.00	5,585,475.00	75	212	278.6	347.3	68.6	0.30		GTDD-22-0015	397,203.00	5,585,475.00	75	212	347.3	348.0	0.7	1.47		GTDD-22-0015	397,203.00	5,585,475.00	75	212	348.0	377.4	29.4	0.44		GTDD-22-0015	397,203.00	5,585,475.00	75	212	377.4	378.7	1.3	1.09		GTDD-22-0015	397,203.00	5,585,475.00	75	212	378.7	395.0	16.3	0.12		GTDD-22-0016	397,256.24	5,585,422.39	77	219	0.0	244.0	244.0	0.22		GTDD-22-0016	397,256.24	5,585,422.39	77	219	244.0	278.3	34.3	1.31	1.5m @ 1.95% Li2O from 253.7m & 1.4m @ 1.77% Li2O & 1.7m @ 1.48% Li2O from 266m & 4.0m @ 2.05% Li2O from 270.0m	GTDD-22-0016	397,256.24	5,585,422.39	77	219	278.3	350.0	71.7	0.11		GTDD-22-0017	398,418.07	5,585,109.32	72	140	0.0	180.0	180.0	0.02		GTDD-22-0020	398,355.00	5,585,010.00	47	139	0.0	183.0	183.0	NSI		GTDD-22-0022	398,355.00	5,585,010.00	46	130	0.0	123.0	123.0	0.02		GTDD-22-0021	398,418.07	5,585,109.32	72	142	0.0	181.0	181.0	0.01		GTDD-22-0024	398,570.85	5,585,113.06	40	110	0.0	361.0	361.0	NSI		GTDD-22-0026	398,710.97	5,585,360.63	41	200	0.0	355.0	355.0	NSI		GTDD-22-0001	397,063.00	5,585,304.00	76	276	0.0	223.2	223.2	0.20		GTDD-22-0001	397,063.00	5,585,304.00	76	276	223.2	133.7	189.5	1.77	7m @ 2.15% Li2O from 124m	GTDD-22-0001	397,063.00	5,585,304.00	76	276	133.7	201.0	67.3	0.22		GTDD-22-0002	397,050.00	5,585,389.00	75	191	0.0	174.0	174.0	0.12		GTDD-22-0002	397,050.00	5,585,389.00	75	191	174.0	189.0	15.0	0.48		GTDD-22-0002	397,050.00	5,585,389.00	75	191	189.0	230.0	41.0	0.16		GTDD-22-0002	397,050.00	5,585,389.00	75	191	230.0	236.8	6.8	1.02		GTDD-22-0002	397,050.00	5,585,389.00	75	191	236.8	292.0	55.2	0.16		GTDD-22-0002	397,050.00	5,585,389.00	75	191	292.0	293.0	1.0	1.07		GTDD-22-0002	397,050.00	5,585,389.00	75	191	293.0	312.0	19.0	0.18		GTDD-22-0013	397,278.00	5,585,404.00	80	32	0.0	302.2	302.2	0.22		GTDD-22-0013	397,278.00	5,585,404.00	80	32	302.2	302.2	0.0	1.01		GTDD-22-0013	397,278.00	5,585,404.00	80	32	302.2	304.2	2.0	0.23		GTDD-22-0013	397,278.00	5,585,404.00	80	32	304.2	322.4	18.2	1.10	1.9m @ 2.05% Li2O from 308.4m & 1.3m @ 2.07% Li2O from 318.0m	GTDD-22-0013	397,278.00	5,585,404.00	80	32	322.4	389.0	66.6	0.10		GTDD-22-0044	397,250.00	5,585,501.00	81	224	0.0	297.0	297.0	0.11		GTDD-22-0044	397,250.00	5,585,501.00	81	224	297.0	295.2	1.8	0.85	2.5m @ 1.95% Li2O from 295.7m	GTDD-22-0044	397,250.00	5,585,501.00	81	224	295.2	450.0	154.8	0.14		GTDD-22-0129	397,767.24	5,585,706.62	60	218	0.0	312.0	312.0	NSI		GTDD-22-0127	397,130.00	5,585,453.00	81	224	0.0	396.0	396.0	Pending		GTDD-22-0118	397,130.00	5,585,453.00	64	227	0.0	372.0	372.0	Pending		GTDD-22-0318A	397,130.00	5,585,453.00	84	268	0.0	78.0	78.0	Pending		GTDD-22-0320	397,341.24	5,585,677.86	60	200	0.0	581.0	581.0	Pending		GTDD-22-0064	396,861.21	5,584,835.89	40	216	0.0	162.0	162.0	NSI		GTDD-22-0066	396,954.00	5,584,849.00	40	214	0.0	135.0	135.0	NSI		GTDD-22-0067	396,945.00	5,584,891.88	59	216	0.0	156.0	156.0	NSI		GTDD-22-0068	396,993.00	5,584,891.88	59	216	0.0	102.0	102.0	NSI		GTDD-22-0111	396,865.05	5,584,706.01	60	216	0.0	183.0	183.0	NSI		GTDD-22-0115	396,939.32	5,584,782.84	59	211	0.0	150.0	150.0	NSI		GTDD-22-0019	397,341.24	5,585,677.86	75	222	0.0	525.0	525.0	Pending		GTDD-22-0110	396,813.57	5,584,499.80	60	220	0.0	330.0	330.0	NSI		GTDD-22-0320	397,342.00	5,585,678.00	65	230	482.2	468.9	10.7	1.49	1.7m @ 1.45% Li2O from 482.0m	GTDD-22-0090	396,625.23	5,584,898.67	61	216	0.0	231.0	231.0	NSI		GTDD-22-0091	396,296.28	5,584,898.67	60	214	0.0	206.0	206.0	NSI		GTDD-22-0093	396,631.40	5,584,828.43	60	220	0.0	68.5	68.5	NSI		GTDD-22-0093	396,631.40	5,584,828.43	60	220	68.5	73.1	4.6	Pending	Visual upturn 4%	GTDD-22-0094	396,631.40	5,584,828.43	60	220	73.1	200.0	126.9	NSI		GTDD-22-0128	397,345.00	5,585,680.00	72	209	0.0	252.3	252.3	NSI		GTDD-22-0128	397,345.00	5,585,680.00	72	209	252.3	258.7	6.4	0.75	1.8m @ 1.48% from 253.4m	GTDD-22-0128	397,345.00	5,585,680.00	72	209	258.7	312.0	53.3	NSI		GTDD-22-0128	397,345.00	5,585,680.00	72	209	312.0	344.9	32.9	0.40	1.4m @ 0.86% from 312.0m	GTDD-22-0128	397,345.00	5,585,680.00	72	209	344.9	474.0	129.1	NSI		GTDD-22-0136	396,501.00	5,584,275.00	62	220	0.0	240.0	240.0	NSI		GTDD-22-0121	397,216.92	5,585,551.05	70	216	0.0	218.0	218.0	NSI		GTDD-22-0121	397,216.92	5,585,551.05	70	216	218.0	219.9	1.9	0.76	0.69m @ 1.37% from 218.0m	GTDD-22-0121	397,216.92	5,585,551.05	70	216	219.9	370.8	150.9	NSI		GTDD-22-0121	397,216.92	5,585,551.05	70	216	370.8	373.3	2.5	NSI		GTDD-22-0121	397,216.92	5,585,551.05	70	216	373.3	377.9	4.6	NSI		GTDD-22-0321	397,216.92	5,585,551.05	70	216	377.9	385.4	7.7	0.93	1.52m @ 2.08% from 376.4m	GTDD-22-0323	397,216.92	5,585,551.05	70	216	385.4	412.0	26.6	NSI		GTDD-2
HOLEID	Existing	Nothing	Ep	Asst	From	To	Interval	L20%	including																																																																																																																																																																																																																																																																																																																																																																																																																																																																																																																																																																																																																																																																																																																																																																																																																																																																																																																																																																																																																																																																																																																												
GTDD-21-0004	397,241.00	5,585,452.00	74	209	0.0	243.5	244.0	0.09																																																																																																																																																																																																																																																																																																																																																																																																																																																																																																																																																																																																																																																																																																																																																																																																																																																																																																																																																																																																																																																																																																																													
GTDD-21-0004	397,241.00	5,585,452.00	74	209	284.0	284.5	42.7	1.54	1.54m @ 2.75% Li2O from 285m																																																																																																																																																																																																																																																																																																																																																																																																																																																																																																																																																																																																																																																																																																																																																																																																																																																																																																																																																																																																																																																																																																																												
GTDD-21-0004	397,241.00	5,585,452.00	74	209	284.0	341.0	57.0	0.09																																																																																																																																																																																																																																																																																																																																																																																																																																																																																																																																																																																																																																																																																																																																																																																																																																																																																																																																																																																																																																																																																																																													
GTDD-21-0005	397,280.00	5,585,396.00	80	221	0.0	245.0	245.0	0.09																																																																																																																																																																																																																																																																																																																																																																																																																																																																																																																																																																																																																																																																																																																																																																																																																																																																																																																																																																																																																																																																																																																													
GTDD-21-0005	397,280.00	5,585,396.00	80	221	245.0	251.7	6.7	1.46	1.46m @ 2.08% Li2O from 245.0m																																																																																																																																																																																																																																																																																																																																																																																																																																																																																																																																																																																																																																																																																																																																																																																																																																																																																																																																																																																																																																																																																																																												
GTDD-21-0005	397,280.00	5,585,396.00	80	221	251.0	265.0	14.0	0.17																																																																																																																																																																																																																																																																																																																																																																																																																																																																																																																																																																																																																																																																																																																																																																																																																																																																																																																																																																																																																																																																																																																													
GTDD-21-0005	397,280.00	5,585,396.00	80	221	265.0	266.0	1.0	0.88																																																																																																																																																																																																																																																																																																																																																																																																																																																																																																																																																																																																																																																																																																																																																																																																																																																																																																																																																																																																																																																																																																																													
GTDD-21-0005	397,280.00	5,585,396.00	80	221	266.0	341.0	75.0	0.17																																																																																																																																																																																																																																																																																																																																																																																																																																																																																																																																																																																																																																																																																																																																																																																																																																																																																																																																																																																																																																																																																																																													
GTDD-21-0005	397,280.00	5,585,396.00	80	221	341.0	342.0	1.0	1.48																																																																																																																																																																																																																																																																																																																																																																																																																																																																																																																																																																																																																																																																																																																																																																																																																																																																																																																																																																																																																																																																																																																													
GTDD-22-0001	397,130.00	5,585,453.00	77	194	0.0	231.8	231.8	0.09																																																																																																																																																																																																																																																																																																																																																																																																																																																																																																																																																																																																																																																																																																																																																																																																																																																																																																																																																																																																																																																																																																																													
GTDD-22-0001	397,130.00	5,585,453.00	77	194	231.8	251.0	19.2	2.20	1.90m @ 1.95% Li2O from 231.8m																																																																																																																																																																																																																																																																																																																																																																																																																																																																																																																																																																																																																																																																																																																																																																																																																																																																																																																																																																																																																																																																																																																												
GTDD-22-0001	397,130.00	5,585,453.00	77	194	251.0	304.9	53.9	0.17																																																																																																																																																																																																																																																																																																																																																																																																																																																																																																																																																																																																																																																																																																																																																																																																																																																																																																																																																																																																																																																																																																																													
GTDD-22-0001	397,130.00	5,585,453.00	77	194	304.9	312.0	7.1	1.04																																																																																																																																																																																																																																																																																																																																																																																																																																																																																																																																																																																																																																																																																																																																																																																																																																																																																																																																																																																																																																																																																																																													
GTDD-22-0001	397,130.00	5,585,453.00	77	194	312.0	332.7	20.7	0.12																																																																																																																																																																																																																																																																																																																																																																																																																																																																																																																																																																																																																																																																																																																																																																																																																																																																																																																																																																																																																																																																																																																													
GTDD-22-0001	397,130.00	5,585,453.00	77	194	332.7	339.4	6.7	1.48																																																																																																																																																																																																																																																																																																																																																																																																																																																																																																																																																																																																																																																																																																																																																																																																																																																																																																																																																																																																																																																																																																																													
GTDD-22-0001	397,130.00	5,585,453.00	77	194	339.4	402.9	63.5	0.08																																																																																																																																																																																																																																																																																																																																																																																																																																																																																																																																																																																																																																																																																																																																																																																																																																																																																																																																																																																																																																																																																																																													
GTDD-22-0006	397,313.00	5,585,361.00	69	214	0.0	310.0	310.0	0.06																																																																																																																																																																																																																																																																																																																																																																																																																																																																																																																																																																																																																																																																																																																																																																																																																																																																																																																																																																																																																																																																																																																													
GTDD-22-0006	397,313.00	5,585,361.00	69	214	310.0	313.1	3.1	0.79	1.58m @ 1.21% Li2O from 310.0m																																																																																																																																																																																																																																																																																																																																																																																																																																																																																																																																																																																																																																																																																																																																																																																																																																																																																																																																																																																																																																																																																																																												
GTDD-22-0006	397,313.00	5,585,361.00	69	214	313.1	341.0	27.9	0.19																																																																																																																																																																																																																																																																																																																																																																																																																																																																																																																																																																																																																																																																																																																																																																																																																																																																																																																																																																																																																																																																																																																													
GTDD-22-0008	397,294.00	5,585,473.00	76	221	0.0	345.0	345.0	0.11																																																																																																																																																																																																																																																																																																																																																																																																																																																																																																																																																																																																																																																																																																																																																																																																																																																																																																																																																																																																																																																																																																																													
GTDD-22-0008	397,294.00	5,585,473.00	76	221	345.0	285.0	285.0	0.08																																																																																																																																																																																																																																																																																																																																																																																																																																																																																																																																																																																																																																																																																																																																																																																																																																																																																																																																																																																																																																																																																																																													
GTDD-22-0009	397,360.00	5,585,423.00	81	219	287.0	287.0	0.0	0.43																																																																																																																																																																																																																																																																																																																																																																																																																																																																																																																																																																																																																																																																																																																																																																																																																																																																																																																																																																																																																																																																																																																													
GTDD-22-0009	397,360.00	5,585,423.00	81	219	287.0	291.0	4.0	0.16																																																																																																																																																																																																																																																																																																																																																																																																																																																																																																																																																																																																																																																																																																																																																																																																																																																																																																																																																																																																																																																																																																																													
GTDD-22-0009	397,360.00	5,585,423.00	81	219	291.0	293.0	2.0	0.50																																																																																																																																																																																																																																																																																																																																																																																																																																																																																																																																																																																																																																																																																																																																																																																																																																																																																																																																																																																																																																																																																																																													
GTDD-22-0009	397,360.00	5,585,423.00	81	219	293.0	342.0	49.0	0.10																																																																																																																																																																																																																																																																																																																																																																																																																																																																																																																																																																																																																																																																																																																																																																																																																																																																																																																																																																																																																																																																																																																													
GTDD-22-0010	397,400.32	5,585,372.16	69	219	313.0	323.0	10.0	1.89	1.3m @ 2.85% Li2O from 313.0m																																																																																																																																																																																																																																																																																																																																																																																																																																																																																																																																																																																																																																																																																																																																																																																																																																																																																																																																																																																																																																																																																																																												
GTDD-22-0010	397,400.32	5,585,372.16	69	219	323.0	395.0	72.0	0.10																																																																																																																																																																																																																																																																																																																																																																																																																																																																																																																																																																																																																																																																																																																																																																																																																																																																																																																																																																																																																																																																																																																													
GTDD-22-0011	397,461.42	5,585,413.00	60	219	0.0	432.8	432.8	0.10																																																																																																																																																																																																																																																																																																																																																																																																																																																																																																																																																																																																																																																																																																																																																																																																																																																																																																																																																																																																																																																																																																																													
GTDD-22-0012	397,203.00	5,585,475.00	81	212	0.0	238.0	238.0	0.11																																																																																																																																																																																																																																																																																																																																																																																																																																																																																																																																																																																																																																																																																																																																																																																																																																																																																																																																																																																																																																																																																																																													
GTDD-22-0012	397,203.00	5,585,475.00	81	212	238.0	246.3	7.3	1.21																																																																																																																																																																																																																																																																																																																																																																																																																																																																																																																																																																																																																																																																																																																																																																																																																																																																																																																																																																																																																																																																																																																													
GTDD-22-0012	397,203.00	5,585,475.00	81	212	246.3	275.0	28.7	0.12																																																																																																																																																																																																																																																																																																																																																																																																																																																																																																																																																																																																																																																																																																																																																																																																																																																																																																																																																																																																																																																																																																																													
GTDD-22-0012	397,203.00	5,585,475.00	81	212	275.0	278.0	3.0	0.56																																																																																																																																																																																																																																																																																																																																																																																																																																																																																																																																																																																																																																																																																																																																																																																																																																																																																																																																																																																																																																																																																																																													
GTDD-22-0012	397,203.00	5,585,475.00	81	212	278.0	351.3	73.3	0.11																																																																																																																																																																																																																																																																																																																																																																																																																																																																																																																																																																																																																																																																																																																																																																																																																																																																																																																																																																																																																																																																																																																													
GTDD-22-0012	397,203.00	5,585,475.00	81	212	351.3	364.0	12.7	0.76																																																																																																																																																																																																																																																																																																																																																																																																																																																																																																																																																																																																																																																																																																																																																																																																																																																																																																																																																																																																																																																																																																																													
GTDD-22-0012	397,203.00	5,585,475.00	81	212	364.0	365.5	1.5	0.49																																																																																																																																																																																																																																																																																																																																																																																																																																																																																																																																																																																																																																																																																																																																																																																																																																																																																																																																																																																																																																																																																																																													
GTDD-22-0012	397,203.00	5,585,475.00	81	212	365.5	366.0	0.5	0.25																																																																																																																																																																																																																																																																																																																																																																																																																																																																																																																																																																																																																																																																																																																																																																																																																																																																																																																																																																																																																																																																																																																													
GTDD-22-0012	397,203.00	5,585,475.00	81	212	366.0	368.0	2.0	0.48																																																																																																																																																																																																																																																																																																																																																																																																																																																																																																																																																																																																																																																																																																																																																																																																																																																																																																																																																																																																																																																																																																																													
GTDD-22-0012	397,203.00	5,585,475.00	81	212	368.0	400.0	32.0	Unsampled																																																																																																																																																																																																																																																																																																																																																																																																																																																																																																																																																																																																																																																																																																																																																																																																																																																																																																																																																																																																																																																																																																																													
GTDD-22-0015	397,203.00	5,585,475.00	75	212	0.0	238.0	238.0	0.05																																																																																																																																																																																																																																																																																																																																																																																																																																																																																																																																																																																																																																																																																																																																																																																																																																																																																																																																																																																																																																																																																																																													
GTDD-22-0015	397,203.00	5,585,475.00	75	212	238.0	247.0	9.0	1.34	1.2m @ 1.65% Li2O from 238.0m																																																																																																																																																																																																																																																																																																																																																																																																																																																																																																																																																																																																																																																																																																																																																																																																																																																																																																																																																																																																																																																																																																																												
GTDD-22-0015	397,203.00	5,585,475.00	75	212	247.0	260.0	13.0	0.16																																																																																																																																																																																																																																																																																																																																																																																																																																																																																																																																																																																																																																																																																																																																																																																																																																																																																																																																																																																																																																																																																																																													
GTDD-22-0015	397,203.00	5,585,475.00	75	212	260.0	263.8	3.8	1.35																																																																																																																																																																																																																																																																																																																																																																																																																																																																																																																																																																																																																																																																																																																																																																																																																																																																																																																																																																																																																																																																																																																													
GTDD-22-0015	397,203.00	5,585,475.00	75	212	263.8	277.9	14.1	0.18																																																																																																																																																																																																																																																																																																																																																																																																																																																																																																																																																																																																																																																																																																																																																																																																																																																																																																																																																																																																																																																																																																																													
GTDD-22-0015	397,203.00	5,585,475.00	75	212	277.9	278.6	0.7	1.09																																																																																																																																																																																																																																																																																																																																																																																																																																																																																																																																																																																																																																																																																																																																																																																																																																																																																																																																																																																																																																																																																																																													
GTDD-22-0015	397,203.00	5,585,475.00	75	212	278.6	347.3	68.6	0.30																																																																																																																																																																																																																																																																																																																																																																																																																																																																																																																																																																																																																																																																																																																																																																																																																																																																																																																																																																																																																																																																																																																													
GTDD-22-0015	397,203.00	5,585,475.00	75	212	347.3	348.0	0.7	1.47																																																																																																																																																																																																																																																																																																																																																																																																																																																																																																																																																																																																																																																																																																																																																																																																																																																																																																																																																																																																																																																																																																																													
GTDD-22-0015	397,203.00	5,585,475.00	75	212	348.0	377.4	29.4	0.44																																																																																																																																																																																																																																																																																																																																																																																																																																																																																																																																																																																																																																																																																																																																																																																																																																																																																																																																																																																																																																																																																																																													
GTDD-22-0015	397,203.00	5,585,475.00	75	212	377.4	378.7	1.3	1.09																																																																																																																																																																																																																																																																																																																																																																																																																																																																																																																																																																																																																																																																																																																																																																																																																																																																																																																																																																																																																																																																																																																													
GTDD-22-0015	397,203.00	5,585,475.00	75	212	378.7	395.0	16.3	0.12																																																																																																																																																																																																																																																																																																																																																																																																																																																																																																																																																																																																																																																																																																																																																																																																																																																																																																																																																																																																																																																																																																																													
GTDD-22-0016	397,256.24	5,585,422.39	77	219	0.0	244.0	244.0	0.22																																																																																																																																																																																																																																																																																																																																																																																																																																																																																																																																																																																																																																																																																																																																																																																																																																																																																																																																																																																																																																																																																																																													
GTDD-22-0016	397,256.24	5,585,422.39	77	219	244.0	278.3	34.3	1.31	1.5m @ 1.95% Li2O from 253.7m & 1.4m @ 1.77% Li2O & 1.7m @ 1.48% Li2O from 266m & 4.0m @ 2.05% Li2O from 270.0m																																																																																																																																																																																																																																																																																																																																																																																																																																																																																																																																																																																																																																																																																																																																																																																																																																																																																																																																																																																																																																																																																																																												
GTDD-22-0016	397,256.24	5,585,422.39	77	219	278.3	350.0	71.7	0.11																																																																																																																																																																																																																																																																																																																																																																																																																																																																																																																																																																																																																																																																																																																																																																																																																																																																																																																																																																																																																																																																																																																													
GTDD-22-0017	398,418.07	5,585,109.32	72	140	0.0	180.0	180.0	0.02																																																																																																																																																																																																																																																																																																																																																																																																																																																																																																																																																																																																																																																																																																																																																																																																																																																																																																																																																																																																																																																																																																																													
GTDD-22-0020	398,355.00	5,585,010.00	47	139	0.0	183.0	183.0	NSI																																																																																																																																																																																																																																																																																																																																																																																																																																																																																																																																																																																																																																																																																																																																																																																																																																																																																																																																																																																																																																																																																																																													
GTDD-22-0022	398,355.00	5,585,010.00	46	130	0.0	123.0	123.0	0.02																																																																																																																																																																																																																																																																																																																																																																																																																																																																																																																																																																																																																																																																																																																																																																																																																																																																																																																																																																																																																																																																																																																													
GTDD-22-0021	398,418.07	5,585,109.32	72	142	0.0	181.0	181.0	0.01																																																																																																																																																																																																																																																																																																																																																																																																																																																																																																																																																																																																																																																																																																																																																																																																																																																																																																																																																																																																																																																																																																																													
GTDD-22-0024	398,570.85	5,585,113.06	40	110	0.0	361.0	361.0	NSI																																																																																																																																																																																																																																																																																																																																																																																																																																																																																																																																																																																																																																																																																																																																																																																																																																																																																																																																																																																																																																																																																																																													
GTDD-22-0026	398,710.97	5,585,360.63	41	200	0.0	355.0	355.0	NSI																																																																																																																																																																																																																																																																																																																																																																																																																																																																																																																																																																																																																																																																																																																																																																																																																																																																																																																																																																																																																																																																																																																													
GTDD-22-0001	397,063.00	5,585,304.00	76	276	0.0	223.2	223.2	0.20																																																																																																																																																																																																																																																																																																																																																																																																																																																																																																																																																																																																																																																																																																																																																																																																																																																																																																																																																																																																																																																																																																																													
GTDD-22-0001	397,063.00	5,585,304.00	76	276	223.2	133.7	189.5	1.77	7m @ 2.15% Li2O from 124m																																																																																																																																																																																																																																																																																																																																																																																																																																																																																																																																																																																																																																																																																																																																																																																																																																																																																																																																																																																																																																																																																																																												
GTDD-22-0001	397,063.00	5,585,304.00	76	276	133.7	201.0	67.3	0.22																																																																																																																																																																																																																																																																																																																																																																																																																																																																																																																																																																																																																																																																																																																																																																																																																																																																																																																																																																																																																																																																																																																													
GTDD-22-0002	397,050.00	5,585,389.00	75	191	0.0	174.0	174.0	0.12																																																																																																																																																																																																																																																																																																																																																																																																																																																																																																																																																																																																																																																																																																																																																																																																																																																																																																																																																																																																																																																																																																																													
GTDD-22-0002	397,050.00	5,585,389.00	75	191	174.0	189.0	15.0	0.48																																																																																																																																																																																																																																																																																																																																																																																																																																																																																																																																																																																																																																																																																																																																																																																																																																																																																																																																																																																																																																																																																																																													
GTDD-22-0002	397,050.00	5,585,389.00	75	191	189.0	230.0	41.0	0.16																																																																																																																																																																																																																																																																																																																																																																																																																																																																																																																																																																																																																																																																																																																																																																																																																																																																																																																																																																																																																																																																																																																													
GTDD-22-0002	397,050.00	5,585,389.00	75	191	230.0	236.8	6.8	1.02																																																																																																																																																																																																																																																																																																																																																																																																																																																																																																																																																																																																																																																																																																																																																																																																																																																																																																																																																																																																																																																																																																																													
GTDD-22-0002	397,050.00	5,585,389.00	75	191	236.8	292.0	55.2	0.16																																																																																																																																																																																																																																																																																																																																																																																																																																																																																																																																																																																																																																																																																																																																																																																																																																																																																																																																																																																																																																																																																																																													
GTDD-22-0002	397,050.00	5,585,389.00	75	191	292.0	293.0	1.0	1.07																																																																																																																																																																																																																																																																																																																																																																																																																																																																																																																																																																																																																																																																																																																																																																																																																																																																																																																																																																																																																																																																																																																													
GTDD-22-0002	397,050.00	5,585,389.00	75	191	293.0	312.0	19.0	0.18																																																																																																																																																																																																																																																																																																																																																																																																																																																																																																																																																																																																																																																																																																																																																																																																																																																																																																																																																																																																																																																																																																																													
GTDD-22-0013	397,278.00	5,585,404.00	80	32	0.0	302.2	302.2	0.22																																																																																																																																																																																																																																																																																																																																																																																																																																																																																																																																																																																																																																																																																																																																																																																																																																																																																																																																																																																																																																																																																																																													
GTDD-22-0013	397,278.00	5,585,404.00	80	32	302.2	302.2	0.0	1.01																																																																																																																																																																																																																																																																																																																																																																																																																																																																																																																																																																																																																																																																																																																																																																																																																																																																																																																																																																																																																																																																																																																													
GTDD-22-0013	397,278.00	5,585,404.00	80	32	302.2	304.2	2.0	0.23																																																																																																																																																																																																																																																																																																																																																																																																																																																																																																																																																																																																																																																																																																																																																																																																																																																																																																																																																																																																																																																																																																																													
GTDD-22-0013	397,278.00	5,585,404.00	80	32	304.2	322.4	18.2	1.10	1.9m @ 2.05% Li2O from 308.4m & 1.3m @ 2.07% Li2O from 318.0m																																																																																																																																																																																																																																																																																																																																																																																																																																																																																																																																																																																																																																																																																																																																																																																																																																																																																																																																																																																																																																																																																																																												
GTDD-22-0013	397,278.00	5,585,404.00	80	32	322.4	389.0	66.6	0.10																																																																																																																																																																																																																																																																																																																																																																																																																																																																																																																																																																																																																																																																																																																																																																																																																																																																																																																																																																																																																																																																																																																													
GTDD-22-0044	397,250.00	5,585,501.00	81	224	0.0	297.0	297.0	0.11																																																																																																																																																																																																																																																																																																																																																																																																																																																																																																																																																																																																																																																																																																																																																																																																																																																																																																																																																																																																																																																																																																																													
GTDD-22-0044	397,250.00	5,585,501.00	81	224	297.0	295.2	1.8	0.85	2.5m @ 1.95% Li2O from 295.7m																																																																																																																																																																																																																																																																																																																																																																																																																																																																																																																																																																																																																																																																																																																																																																																																																																																																																																																																																																																																																																																																																																																												
GTDD-22-0044	397,250.00	5,585,501.00	81	224	295.2	450.0	154.8	0.14																																																																																																																																																																																																																																																																																																																																																																																																																																																																																																																																																																																																																																																																																																																																																																																																																																																																																																																																																																																																																																																																																																																													
GTDD-22-0129	397,767.24	5,585,706.62	60	218	0.0	312.0	312.0	NSI																																																																																																																																																																																																																																																																																																																																																																																																																																																																																																																																																																																																																																																																																																																																																																																																																																																																																																																																																																																																																																																																																																																													
GTDD-22-0127	397,130.00	5,585,453.00	81	224	0.0	396.0	396.0	Pending																																																																																																																																																																																																																																																																																																																																																																																																																																																																																																																																																																																																																																																																																																																																																																																																																																																																																																																																																																																																																																																																																																																													
GTDD-22-0118	397,130.00	5,585,453.00	64	227	0.0	372.0	372.0	Pending																																																																																																																																																																																																																																																																																																																																																																																																																																																																																																																																																																																																																																																																																																																																																																																																																																																																																																																																																																																																																																																																																																																													
GTDD-22-0318A	397,130.00	5,585,453.00	84	268	0.0	78.0	78.0	Pending																																																																																																																																																																																																																																																																																																																																																																																																																																																																																																																																																																																																																																																																																																																																																																																																																																																																																																																																																																																																																																																																																																																													
GTDD-22-0320	397,341.24	5,585,677.86	60	200	0.0	581.0	581.0	Pending																																																																																																																																																																																																																																																																																																																																																																																																																																																																																																																																																																																																																																																																																																																																																																																																																																																																																																																																																																																																																																																																																																																													
GTDD-22-0064	396,861.21	5,584,835.89	40	216	0.0	162.0	162.0	NSI																																																																																																																																																																																																																																																																																																																																																																																																																																																																																																																																																																																																																																																																																																																																																																																																																																																																																																																																																																																																																																																																																																																													
GTDD-22-0066	396,954.00	5,584,849.00	40	214	0.0	135.0	135.0	NSI																																																																																																																																																																																																																																																																																																																																																																																																																																																																																																																																																																																																																																																																																																																																																																																																																																																																																																																																																																																																																																																																																																																													
GTDD-22-0067	396,945.00	5,584,891.88	59	216	0.0	156.0	156.0	NSI																																																																																																																																																																																																																																																																																																																																																																																																																																																																																																																																																																																																																																																																																																																																																																																																																																																																																																																																																																																																																																																																																																																													
GTDD-22-0068	396,993.00	5,584,891.88	59	216	0.0	102.0	102.0	NSI																																																																																																																																																																																																																																																																																																																																																																																																																																																																																																																																																																																																																																																																																																																																																																																																																																																																																																																																																																																																																																																																																																																													
GTDD-22-0111	396,865.05	5,584,706.01	60	216	0.0	183.0	183.0	NSI																																																																																																																																																																																																																																																																																																																																																																																																																																																																																																																																																																																																																																																																																																																																																																																																																																																																																																																																																																																																																																																																																																																													
GTDD-22-0115	396,939.32	5,584,782.84	59	211	0.0	150.0	150.0	NSI																																																																																																																																																																																																																																																																																																																																																																																																																																																																																																																																																																																																																																																																																																																																																																																																																																																																																																																																																																																																																																																																																																																													
GTDD-22-0019	397,341.24	5,585,677.86	75	222	0.0	525.0	525.0	Pending																																																																																																																																																																																																																																																																																																																																																																																																																																																																																																																																																																																																																																																																																																																																																																																																																																																																																																																																																																																																																																																																																																																													
GTDD-22-0110	396,813.57	5,584,499.80	60	220	0.0	330.0	330.0	NSI																																																																																																																																																																																																																																																																																																																																																																																																																																																																																																																																																																																																																																																																																																																																																																																																																																																																																																																																																																																																																																																																																																																													
GTDD-22-0320	397,342.00	5,585,678.00	65	230	482.2	468.9	10.7	1.49	1.7m @ 1.45% Li2O from 482.0m																																																																																																																																																																																																																																																																																																																																																																																																																																																																																																																																																																																																																																																																																																																																																																																																																																																																																																																																																																																																																																																																																																																												
GTDD-22-0090	396,625.23	5,584,898.67	61	216	0.0	231.0	231.0	NSI																																																																																																																																																																																																																																																																																																																																																																																																																																																																																																																																																																																																																																																																																																																																																																																																																																																																																																																																																																																																																																																																																																																													
GTDD-22-0091	396,296.28	5,584,898.67	60	214	0.0	206.0	206.0	NSI																																																																																																																																																																																																																																																																																																																																																																																																																																																																																																																																																																																																																																																																																																																																																																																																																																																																																																																																																																																																																																																																																																																													
GTDD-22-0093	396,631.40	5,584,828.43	60	220	0.0	68.5	68.5	NSI																																																																																																																																																																																																																																																																																																																																																																																																																																																																																																																																																																																																																																																																																																																																																																																																																																																																																																																																																																																																																																																																																																																													
GTDD-22-0093	396,631.40	5,584,828.43	60	220	68.5	73.1	4.6	Pending	Visual upturn 4%																																																																																																																																																																																																																																																																																																																																																																																																																																																																																																																																																																																																																																																																																																																																																																																																																																																																																																																																																																																																																																																																																																																												
GTDD-22-0094	396,631.40	5,584,828.43	60	220	73.1	200.0	126.9	NSI																																																																																																																																																																																																																																																																																																																																																																																																																																																																																																																																																																																																																																																																																																																																																																																																																																																																																																																																																																																																																																																																																																																													
GTDD-22-0128	397,345.00	5,585,680.00	72	209	0.0	252.3	252.3	NSI																																																																																																																																																																																																																																																																																																																																																																																																																																																																																																																																																																																																																																																																																																																																																																																																																																																																																																																																																																																																																																																																																																																													
GTDD-22-0128	397,345.00	5,585,680.00	72	209	252.3	258.7	6.4	0.75	1.8m @ 1.48% from 253.4m																																																																																																																																																																																																																																																																																																																																																																																																																																																																																																																																																																																																																																																																																																																																																																																																																																																																																																																																																																																																																																																																																																																												
GTDD-22-0128	397,345.00	5,585,680.00	72	209	258.7	312.0	53.3	NSI																																																																																																																																																																																																																																																																																																																																																																																																																																																																																																																																																																																																																																																																																																																																																																																																																																																																																																																																																																																																																																																																																																																													
GTDD-22-0128	397,345.00	5,585,680.00	72	209	312.0	344.9	32.9	0.40	1.4m @ 0.86% from 312.0m																																																																																																																																																																																																																																																																																																																																																																																																																																																																																																																																																																																																																																																																																																																																																																																																																																																																																																																																																																																																																																																																																																																												
GTDD-22-0128	397,345.00	5,585,680.00	72	209	344.9	474.0	129.1	NSI																																																																																																																																																																																																																																																																																																																																																																																																																																																																																																																																																																																																																																																																																																																																																																																																																																																																																																																																																																																																																																																																																																																													
GTDD-22-0136	396,501.00	5,584,275.00	62	220	0.0	240.0	240.0	NSI																																																																																																																																																																																																																																																																																																																																																																																																																																																																																																																																																																																																																																																																																																																																																																																																																																																																																																																																																																																																																																																																																																																													
GTDD-22-0121	397,216.92	5,585,551.05	70	216	0.0	218.0	218.0	NSI																																																																																																																																																																																																																																																																																																																																																																																																																																																																																																																																																																																																																																																																																																																																																																																																																																																																																																																																																																																																																																																																																																																													
GTDD-22-0121	397,216.92	5,585,551.05	70	216	218.0	219.9	1.9	0.76	0.69m @ 1.37% from 218.0m																																																																																																																																																																																																																																																																																																																																																																																																																																																																																																																																																																																																																																																																																																																																																																																																																																																																																																																																																																																																																																																																																																																												
GTDD-22-0121	397,216.92	5,585,551.05	70	216	219.9	370.8	150.9	NSI																																																																																																																																																																																																																																																																																																																																																																																																																																																																																																																																																																																																																																																																																																																																																																																																																																																																																																																																																																																																																																																																																																																													
GTDD-22-0121	397,216.92	5,585,551.05	70	216	370.8	373.3	2.5	NSI																																																																																																																																																																																																																																																																																																																																																																																																																																																																																																																																																																																																																																																																																																																																																																																																																																																																																																																																																																																																																																																																																																																													
GTDD-22-0121	397,216.92	5,585,551.05	70	216	373.3	377.9	4.6	NSI																																																																																																																																																																																																																																																																																																																																																																																																																																																																																																																																																																																																																																																																																																																																																																																																																																																																																																																																																																																																																																																																																																																													
GTDD-22-0321	397,216.92	5,585,551.05	70	216	377.9	385.4	7.7	0.93	1.52m @ 2.08% from 376.4m																																																																																																																																																																																																																																																																																																																																																																																																																																																																																																																																																																																																																																																																																																																																																																																																																																																																																																																																																																																																																																																																																																																												
GTDD-22-0323	397,216.92	5,585,551.05	70	216	385.4	412.0	26.6	NSI																																																																																																																																																																																																																																																																																																																																																																																																																																																																																																																																																																																																																																																																																																																																																																																																																																																																																																																																																																																																																																																																																																																													
GTDD-2																																																																																																																																																																																																																																																																																																																																																																																																																																																																																																																																																																																																																																																																																																																																																																																																																																																																																																																																																																																																																																																																																																																																					

Criteria	JORC Code explanation	Commentary
		Southern Geoscience
Further work	<ul style="list-style-type: none"> <i>The nature and scale of planned further work (eg tests for lateral extensions or depth extensions or large-scale step-out drilling).</i> <i>Diagrams clearly highlighting the areas of possible extensions, including the main geological interpretations and future drilling areas, provided this information is not commercially sensitive.</i> 	<ul style="list-style-type: none"> Test further potential downdip extensions and pegmatite stacking at North Aubry. Geological field mapping of anomalies and associated pegmatites at Seymour and regional claims. Sampling pegmatites for spodumene Completion of Phase 2 diamond drilling at Seymour Project. Drill targeting and followed by diamond drilling over the next 24 months. Continuation of detailed mining studies