



Victory Executes Binding Agreement for Strategic Tenement Adjoining REE Discovery

Highlights

- Over 30km² of tenement area prospective for Rare Earth Elements (REE)
- Direct access to Great Northern Highway
- Victory has commenced due diligence investigations on its option to acquire former gold processing plant and tailings storage facility approximately 4km west from Cue¹
- Aerial magnetic data from the recent low flying survey covering 3,433 line kilometers is currently being processed and due for completion early September
- Remaining 1,086 assays testing for REE due imminently²

Victory Goldfields (ASX:1VG) (“Victory” or “the Company”) is pleased to announce it has expanded its exploration footprint directly adjacent to the Company’s recent REE discovery and the large alkaline igneous intrusion at North Stanmore after entering into a Tenement Sale Agreement (“Agreement”) for the acquisition of Tenement Application E20/1016. The tenement application comprising of 11 blocks which borders the entire eastern boundary of Victory’s North Stanmore tenement E20/871.

The binding Agreement also includes a further three tenements situated north of Cue known as granted tenement E51/1939 and two tenement applications E51/2104 and E51/2102 that offer excellent potential for gold exploration.

Victory’s Executive Director Brendan Clark commented: *“This strategic acquisition enhances Victory’s tenure position surrounding its recent discovery of a rare alkaline igneous intrusion on the Company’s 100% owned North Stanmore tenement”*

“With alkaline intrusions being referred as engine rooms for Rare Earth Elements, there is potential that the Rare Earth Elements results the Company has reported approximately 4km to the south of the intrusion could be consistent and radial around the intrusion”

“The Company is also pleased to advise that the outstanding assays that cover an area approximately 800 metres North from the Company’s recently reported Rare Earth Element discovery are due to be reported imminently”

¹ Refer to ASX announcement titled “Half Yearly Reports and Accounts” dated 15th March 2022

² Refer to ASX announcement titled “HIGH VALUE CRITICAL RARE EARTH ELEMENT DISCOVERY” dated 20th July 2022

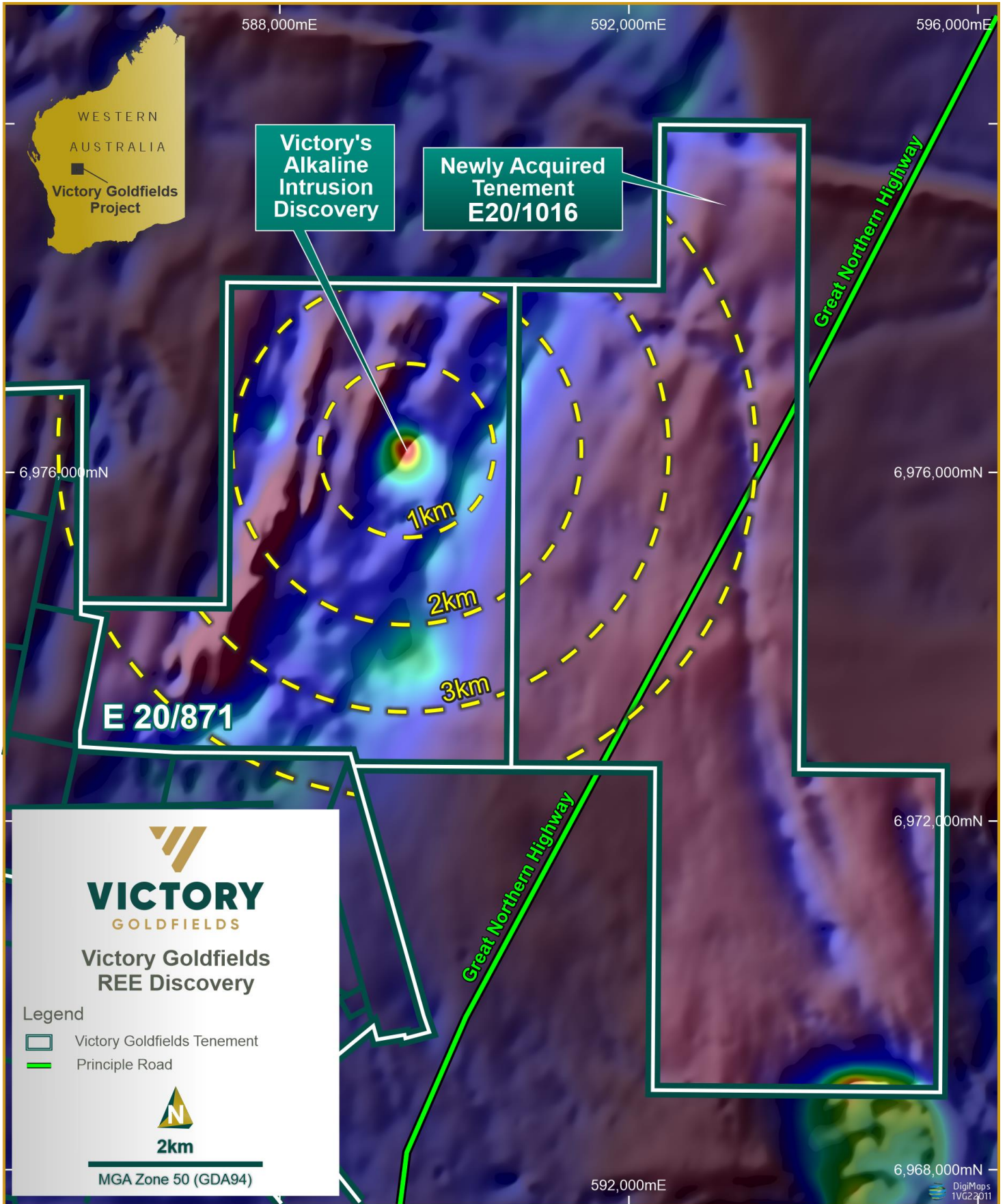


Figure 1. Map showing Victory's North Stanmore alkaline intrusion with E 20/1016

Tenement Application E20/2016

The tenement application E20/2016 is situated approximately 5km from the Cue township and borders the eastern boundary of Victory's North Stanmore tenement E20/871. Strategically, E20/2016 has direct access to the Great Northern Highway and is 11 graticular blocks in size (approximately 30km²). The tenement is in the advanced stages of granting.

Over 90% of the tenement is overlain by transported and colluvial cover sequences. Mapping by the Geological Survey of WA suggests the underlying geology is predominantly the Cue Tonalite. Regional aeromagnetism suggests lenses of magnetic material may be mafic rocks intruded into the tonalite.

Tenements E51/1939 (Louise), E51/2102 and E51/2104

The Louise project is situated along strike extension of the Meekatharra-Wydney greenstone belt which hosts the Kohinoor/Stakewell north group of workings and approximately 55km northeast from Cue (Figure 2). The tenement was granted on 13 August 2020, has an expiry date of 12 August 2022 and is situated adjacent to tenements owned and operated by Odyssey Gold Ltd (ASX: ODY) in the Tuckanarra area. Odyssey have had recent exploration success identifying extensions to their known mineralization at Bottle Dump and Cable-Bollard.

The Meekatharra-Wydney greenstone belt comprises a succession of metamorphosed mafic to ultramafic, felsic and sedimentary rocks belonging to the Luke Creek Group. Mineralisation is concentrated within the lower formations of the group (Golconda Formation and Gabanintha Formation), which dominate the greenstone belt in the district.

The Tuckabianna shear zone runs in a NE/SW orientation to the west of the Tuckanarra area and splits the supracrustal rocks into two associations. Association 1 rocks to the east of the shear zone comprise numerous BIF beds interlayered with mafic and ultramafic volcanic and intrusive rocks deformed into an asymmetric syncline referred to as the Kurrajong syncline. Association 2 rocks to the west of the shear zone consist of felsic, mafic and ultramafic rocks almost completely devoid of BIF sediments.

Granitoids to the east of the greenstones are pre- to syn-tectonic granodiorite and are interpreted as being part of the Big Bell Suite. Those granitoids to the west are largely post-tectonic and part of the Bald Rock Supersuite.

Acquisition terms of E20/1016, E51/1939, E51/2102 and E51/2104

Victory has acquired the interest from Mining Equities Pty Ltd ("Vendor") on the following terms:

- Victory acquires 100% of E51/1939 granted tenement and E20/1016, E51/2104 and E51/2102 tenement applications in exchange for 1,200,000 fully paid ordinary shares.
- The Shares issued under this Agreement will be subject to voluntary escrow for 12 months from issue or until the last of the Tenement Applications is granted, whichever occurs first.
- The Vendor to retain a 1% NSR Royalty from the sale of any mineral mined from the Royalty Area by or on behalf of Victory.
- Completion of the acquisition is subject to the satisfaction of standard condition precedents.

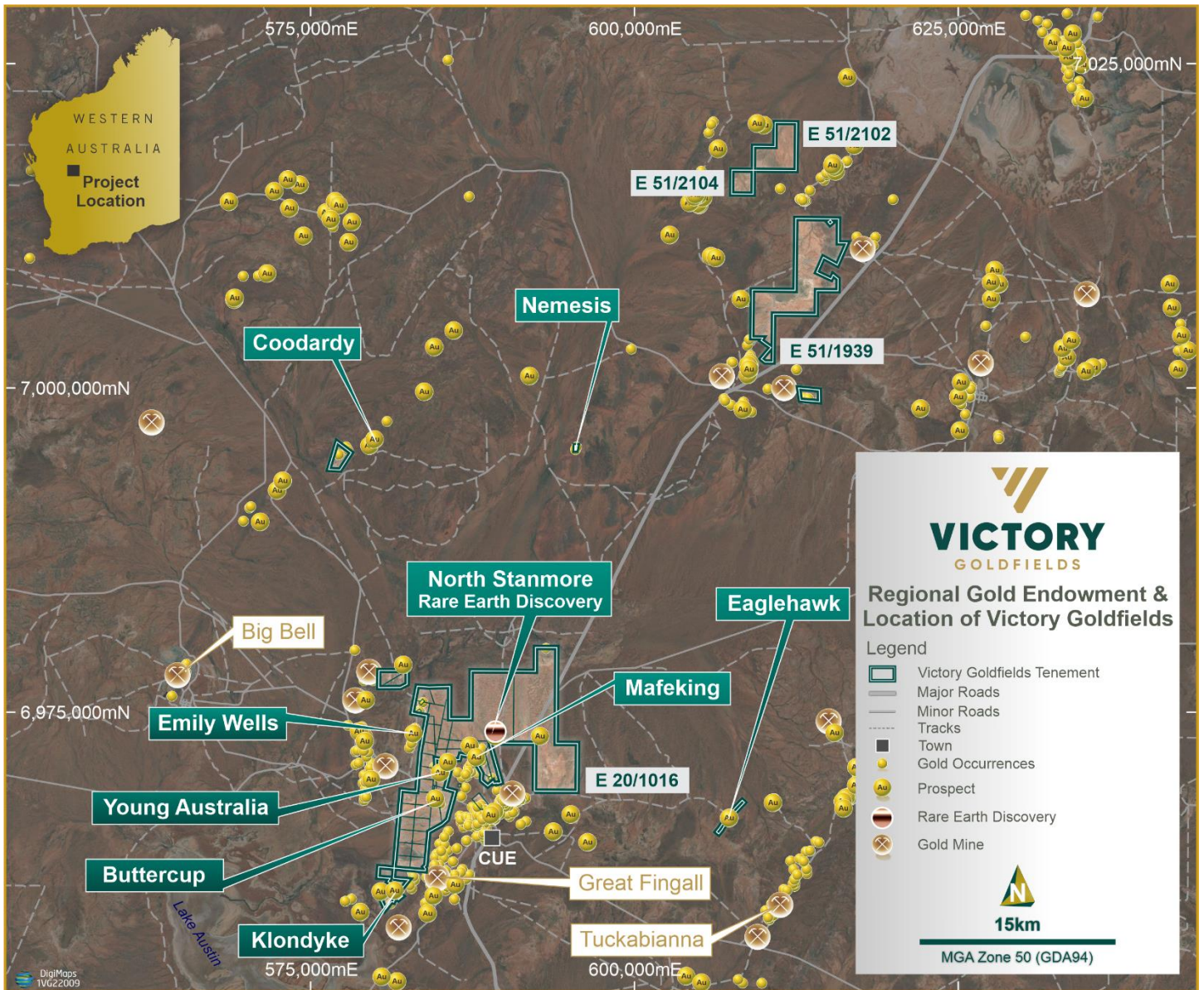


Figure 2. Regional Map showing Victory’s tenement package with E 20/1016, E 51/1939, E 51/2102 and E 51/2104

Processing Plant Due Diligence

Victory has commenced due diligence investigations for the acquisition of a former gold CIP/CIL processing plant situated approximately 4km west of Cue.

The plant includes a crushing circuit, tailings storage facility (TSF), workers accommodation and outbuildings along with a former CIP/CIL processing plant that has been in care and maintenance for approximately 10 years.

The environmental approvals granted for the existing plant are for a cyanide extraction process which in operation could have a much higher environmental impact compared to the predicted method of extraction of REE from a clay-based system that generally require a weak acid dilution method.

Victory’s due diligence investigations will focus on timeframes around the construction of a processing plant and TSF and whether the existing environmental approvals of the former gold plant will reduce approval timeframes for REE processing compared to a greenfield site.



Figure 2. Former gold CIP/CIL processing plant and TSF

This announcement has been authorised by the Board of Victory Goldfields Limited.

For further information please contact:

Brendan Clark
Executive Director
brendan.clark@victorygold.com.au

Lexi O'Halloran
Investor and Media Relations
lexi@janemorganmanagement.com.au

Victory Goldfields: Company Profile

Victory has systematically built a portfolio of assets in the Cue goldfields. Cue is located in the mid-west region of Western Australia, 665 kilometres north-east from Perth. The Cue goldfields are regarded as one of the most prestigious mining districts of Western Australia with a long and successful history of gold exploration and production.

The Company's strategy is to undertake best practice exploration and development of the Victory tenements to identify Mineral Resources and Ore Reserves within its tenement land holding. Leveraging its land holding position, Victory also aims to acquire additional gold opportunities within the Cue goldfields district, either through joint venture or tenement acquisition.

Competent Person Statement

The historical exploration activities and results contained in this report is based on information compiled by Michael Busbridge, a Member of the Australian Institute of Geoscientists and a Member of the Society of Economic Geologists. Michael is a consultant to Victory Goldfields Limited. Michael has sufficient experience which is relevant to the style of mineralisation and types of deposits under consideration and to the activity which he is undertaking to qualify as a Competent Person as defined in the 2012 edition of the Australasian Code for Reporting of Exploration Results, Mineral Resources and Ore Reserves (the JORC Code). Michael Busbridge has consented to the inclusion in the report of the matters based on his information in the form and context in which it appears.