



**PATHWAY TO PRODUCTION**



**Brightstar 485ktpa Processing Facility**



# Disclaimer

**Nature of this document:** The purpose of this presentation is to provide general information about Brightstar Resources Limited (the '**Company**'). Unless otherwise stated herein, the information in this presentation is based on the Company's own information and estimates. In attending this presentation or viewing this document you agree to be bound by the following terms and conditions. This document has been prepared by the Company. Information in this document should be read in conjunction with other announcements made by the Company to the Australian Securities Exchange and available at [www.asx.com](http://www.asx.com).

**Not an offer:** This presentation is for information purposes only and does not constitute or form any part of any offer or invitation to sell or issue, or any solicitation of any offer to purchase or subscribe for, any securities in the Company in any jurisdiction. This presentation and its contents must not be distributed, transmitted or viewed by any person in any jurisdiction where the distribution, transmission or viewing of this document would be unlawful under the securities or other laws of that or any other jurisdiction.

**Not financial product advice:** This presentation does not take into account the individual investment objectives, financial situation and particular needs of each of the Company's shareholders. You may wish to seek independent financial and taxation advice before making any decision in respect of this presentation. The Company nor any of its related bodies corporate is licensed to provide financial product advice in respect of the Company's securities or any other financial products.

**Forward-looking statements:** Certain statements in the presentation are or may be "forward-looking statements" and represent the Company's intentions, projections, expectations or beliefs concerning, among other things, future operating and exploration results or the Company's future performance. These forward looking statements speak, and the presentation generally speaks, only at the date hereof. The projections, estimates and beliefs contained in such forward looking statements necessarily involve known and unknown risks and uncertainties, and are necessarily based on assumptions, which may cause the Company's actual performance, results and achievements in future periods to differ materially from any express or implied estimates or projections. Accordingly, readers are cautioned not to place undue reliance on forward looking statements. Relevant factors which may affect the Company's actual performance, results and achievements include changes in commodity price, foreign exchange fluctuations and general economic conditions, increased costs and demand for production inputs, the speculative nature of exploration and project development, diminishing quantities or grades of reserves, political and social risks, changes to laws and regulations, environmental conditions, and recruitment and retention of personnel.

**Disclaimer:** No representation or warranty, express or implied, is made by the Company that the material contained in this presentation will be achieved or prove to be correct. Except for statutory liability which cannot be excluded, each of the Company, and their respective directors, officers, employees, advisers and agents expressly disclaim any responsibility for the accuracy, fairness, sufficiency or completeness of the material contained in this presentation, or any opinions or beliefs contained in this document, and excludes all liability whatsoever (including in negligence) for any loss or damage which may be suffered by any person as a consequence of any information in this presentation or any error or omission there from. The Company is under no obligation to update or keep current the information contained in this presentation or to correct any inaccuracy or omission which may become apparent, or to furnish any person with any further information. Any opinions expressed in the presentation are subject to change without notice.

**Unverified information:** This presentation may contain information (including information derived from publicly available sources) that has not been independently verified by the Company.

## COMPETENT PERSON'S STATEMENT

The information regarding Mineral Resources for the Cork Tree Well deposit is extracted from the report entitled 'Cork Tree Mineral Resource Increased' created on August 10, 2022 and available to view on [www.brightstarresources.com.au](http://www.brightstarresources.com.au). The information regarding Mineral Resources for the Alpha and Beta deposits is extracted from the report entitled 'Auralia Review' created on September 10, 2020 and available to view on [www.brightstarresources.com.au](http://www.brightstarresources.com.au). This announcement was made under the company's previous name of Stone Resources Australia Ltd. The company confirms that it is not aware of any new information or data that materially affects the information included in the original market announcements and, in the case of estimates of Mineral Resources or Ore Reserves, that all material assumptions and technical parameters underpinning the estimates in the relevant market announcement continue to apply and have not materially changed. The company confirms that the form and context in which the Competent Person's findings are presented have not been materially modified from the original market announcement.

**This presentation has been approved for release by the board of Brightstar Resources Limited.**

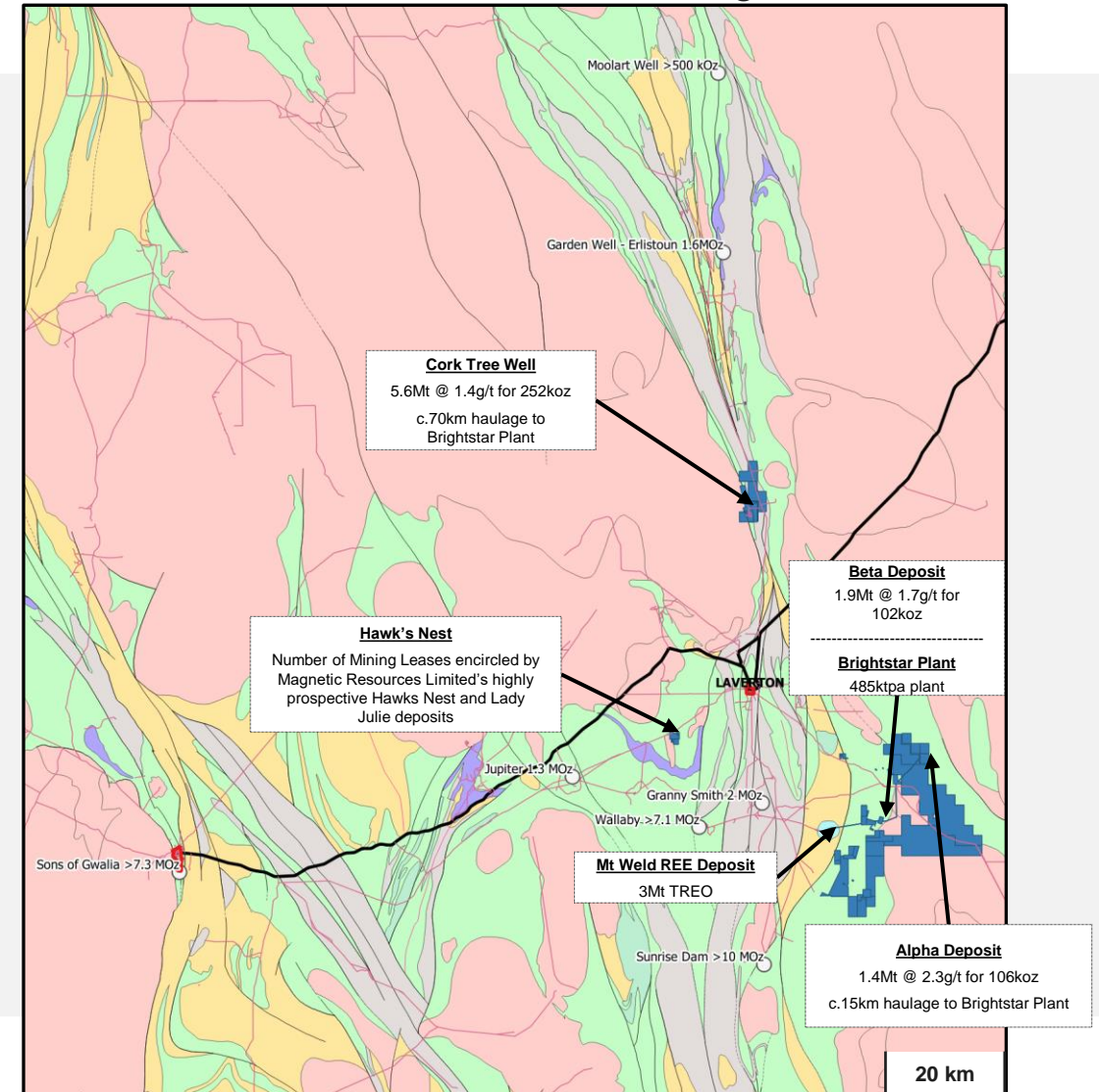


# WORLD-CLASS GEOLOGICAL ADDRESS

c.300km<sup>2</sup> of highly prospective mining and exploration tenements in the world-class Leonora–Laverton Region

## UNLOCKING VALUE THROUGH GOLD DISCOVERIES IN A **GREAT GEOLOGICAL LOCATION**

- **c.300km<sup>2</sup> of highly prospective land** in the world-class Laverton Goldfield – c.940km NE of Perth
- The Laverton region is well endowed with world-class gold deposits totalling +20Moz mined, including:
  - **Sunrise Dam** (+10Moz gold mined)
  - **Wallaby** (+7Moz gold mined)
  - **Moolart/Garden Well** (+2Moz mined)
  - **Granny Smith** (+2Moz gold mined)
- As well as the Tier 1 **Mt Weld REE** deposit (3Mt TREO Resource)
- Brightstar's tenement package hosts a **Mineral Resource of 7.2Mt at 1.6g/t for 460koz Au across its three deposits**: Cork Tree Well, Alpha and Beta
- Brightstar has identified **numerous high-priority exploration targets**, including on its Mining Lease at Hawks Nest which is encircled by Magnetic Resources Limited's (ASX: **MAU**) highly prospective Hawks Nest 9 Project – MAU has recently announced their maiden resource for the Laverton and Homeward Bound projects with 13.1Mt @ 1.22g/t Au for 511,000oz Au<sup>1</sup>



# CORPORATE OVERVIEW

After a successful recapitalisation, Brightstar is positioned to deliver sustainable, long-term value for its shareholders.

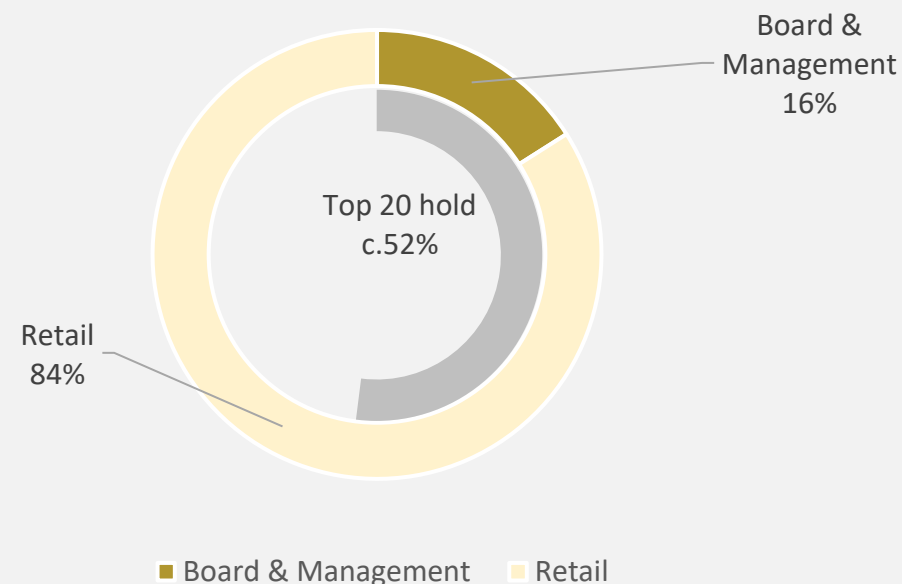
CAPITAL STRUCTURE (as at 30 June 2022)	
Share price	1.8c
No. of shares on issue	647m
<b>Market capitalisation (undiluted)</b>	<b>\$11.6m</b>
Cash and equivalents	\$1.6m
Options on issue <sup>1</sup>	55m

BOARD & KEY MANAGEMENT
<b>William Hobba, Managing Director</b> 40 years of processing, plant construction & technical experience
<b>Joshua Hunt, Non-Executive Director</b> Experienced Capital Markets Lawyer
<b>Ian Pegg, Exploration Manager</b> over 20 years of geological experience, including Gold Fields Australia

## WELL-FUNDED CASH POSITION AND TIGHT REGISTER

- Top 20 hold c.52%, Board & Management hold c.16%

### TOTAL SHAREHOLDINGS (as at 30 June 2022)



(1) Unlisted options with weighted average exercise price of 4.6c and expiry ranging between April 2023 and December 2024

# RESOURCE DEVELOPMENT HIGHLIGHTS

460koz Au of Mineral Resources with significant growth opportunities

1.

## Cork Tree Well Project

The Cork Tree Well **Mineral Resource of 5.6Mt at 1.4g/t for 252koz** is only 70km from the Brightstar processing plant. The most recent MRE (Aug 2022) has shown potential for underground as well as open pit mining and the bottom of the mineralisation has still not been found.

2.

## Alpha Project

The Alpha **Mineral Resource of 1.4Mt at 2.3g/t for 106koz Au** is within 15km of Brightstar processing plant. It is composed of both oxide and fresh material that can be mined through open pit and underground methods. Current drilling has not determined the bottom of the mineralisation.

3.

## Beta Project

The Beta **Mineral Resource of 1.9Mt at 1.7g/t for 101koz Au** is immediately adjacent to Brightstar's processing plant (on care and maintenance) and related support infrastructure (including a 60-person accommodation camp). The resource material is a mix of oxide and fresh material that is amenable to both open pit and underground mining. Previous drilling has shown the potential for mineralisation to continue down-dip.

4.

## Room to grow – Opportunities for discovery

With ~300km<sup>2</sup> of unique Laverton ground to explore there are multiple other anomalous positions to be explored. Key projects still to be investigated include Brightstar's Hawks Nest leases, the Ophir bore location and Sailor Prince workings.

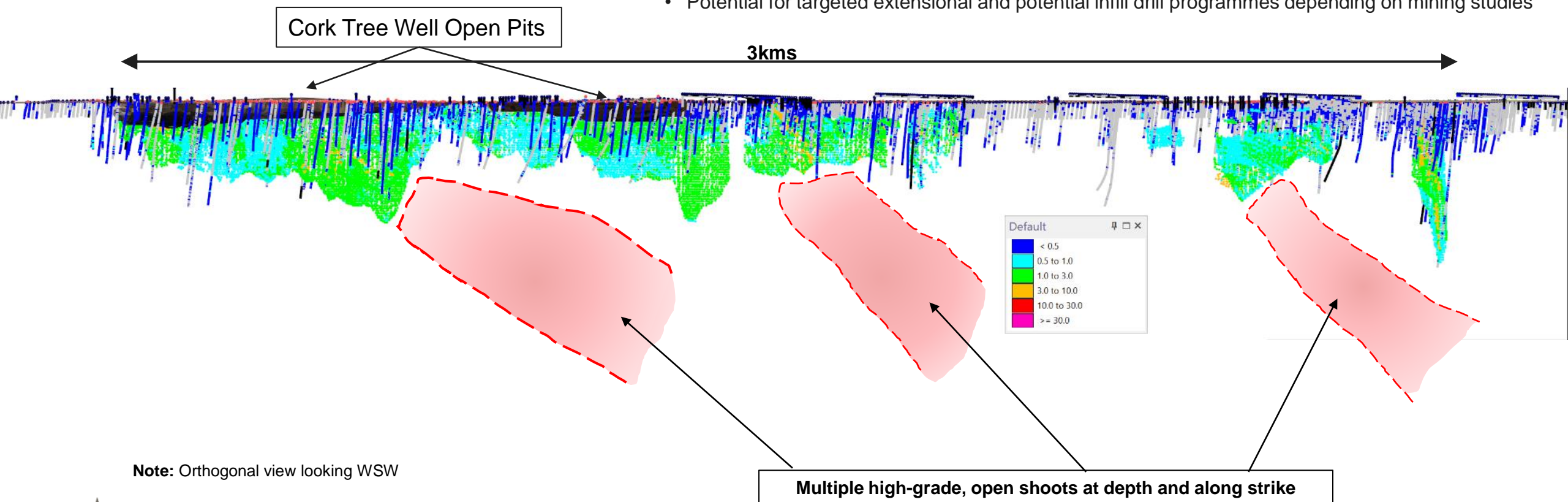
The discovery of a broad mineralised shoot potentially amenable to underground mining completely re-sets the potential size of this project.



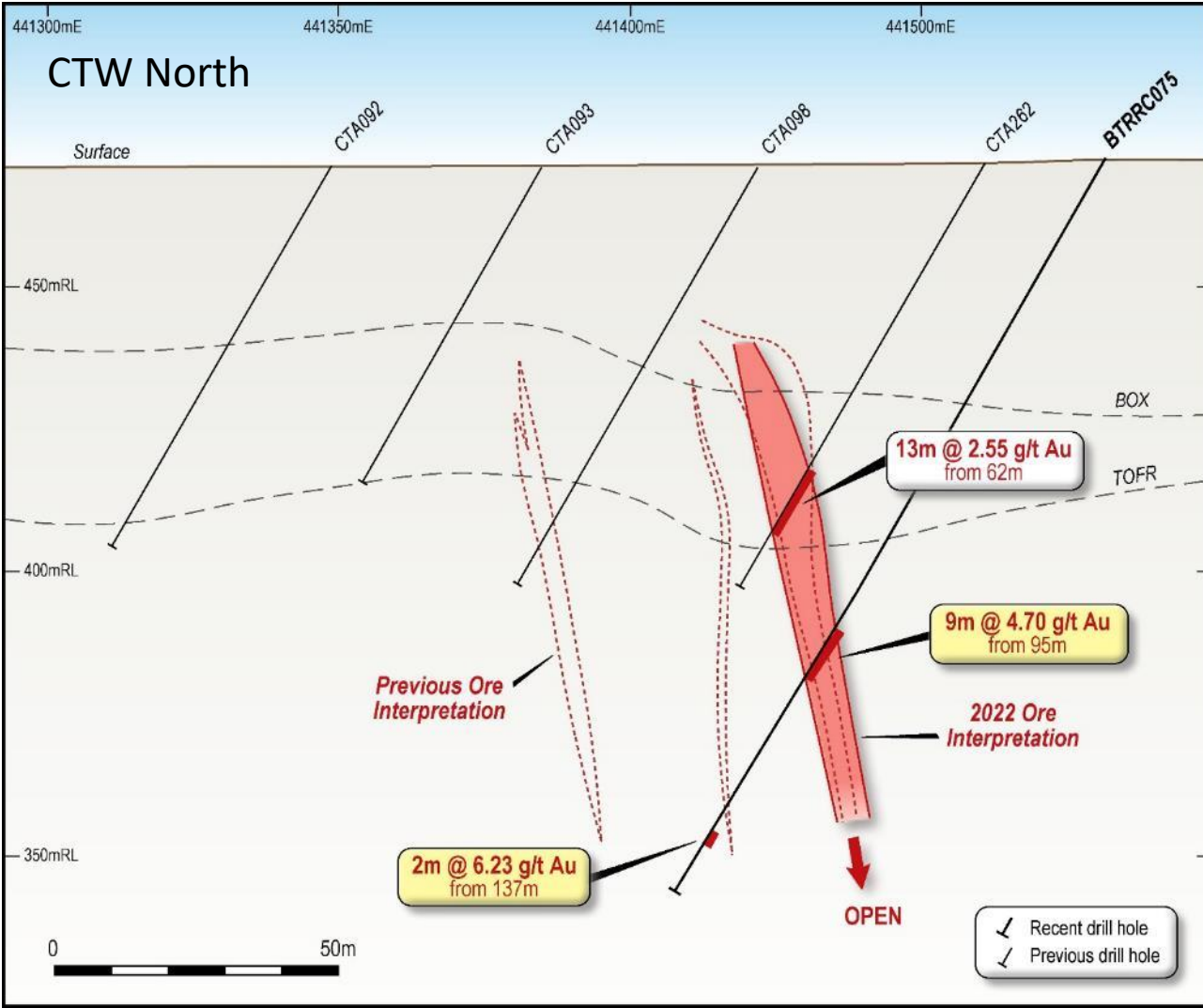
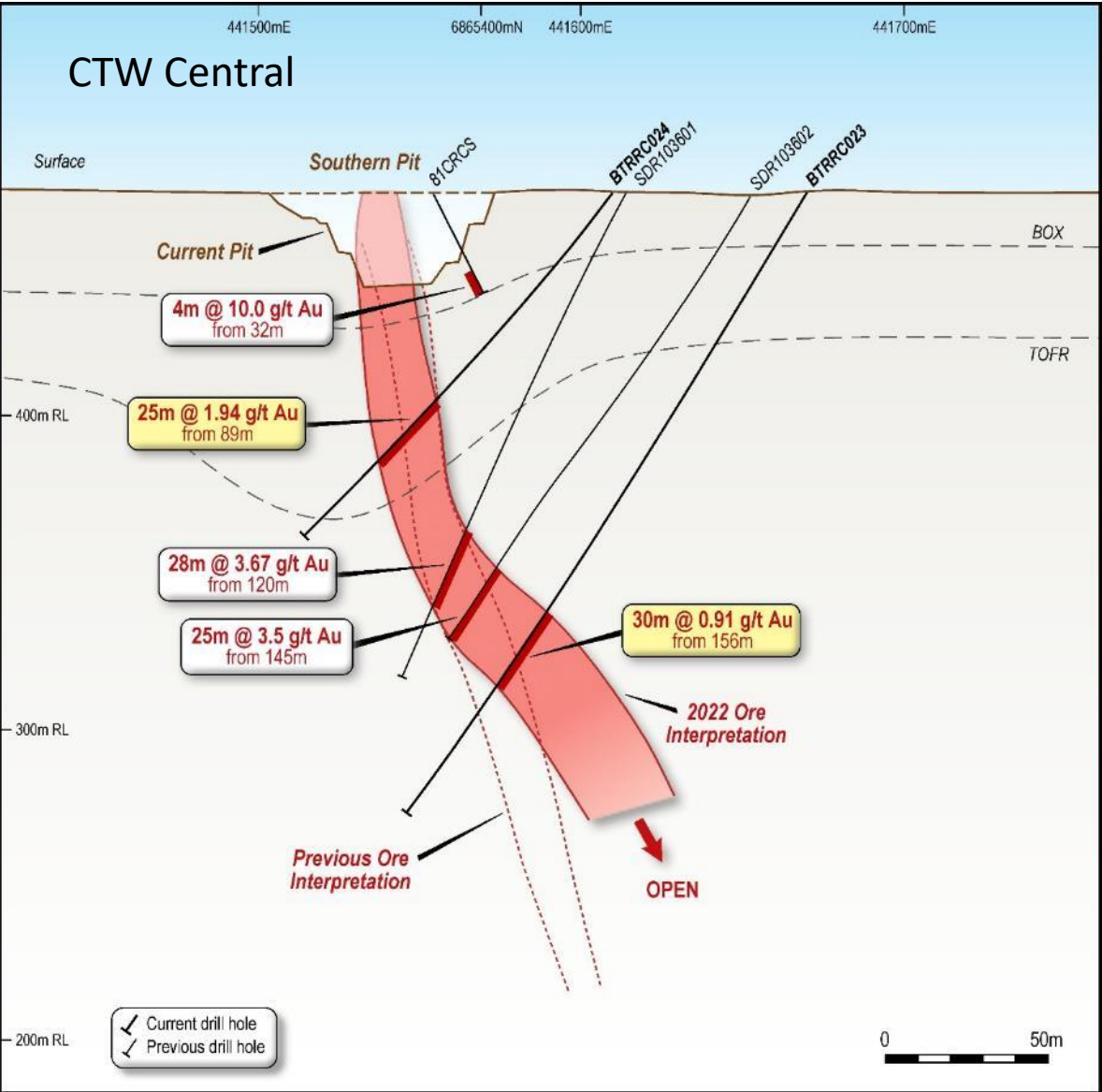


# CORK TREE WELL DEPOSIT

- Historical production (1987 – 1989) of 740kt at 2.4g/t for 57koz Au
- Significant JORC resource of 5.6Mt at 1.4g/t for 252koz within 70km of plant
- High-grade, open shoots at depth and along strike
- Significant near surface oxide resource remaining in the north
- Suitable for open pit and underground mining studies
- Potential for targeted extensional and potential infill drill programmes depending on mining studies



# CORK TREE WELL SECTIONS





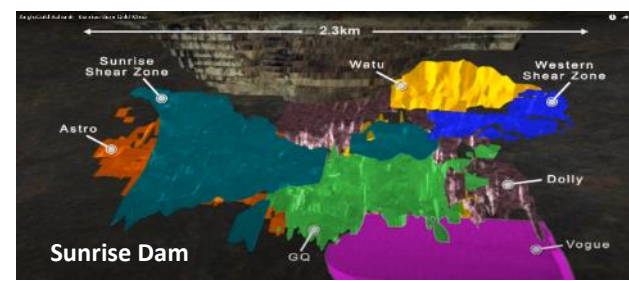
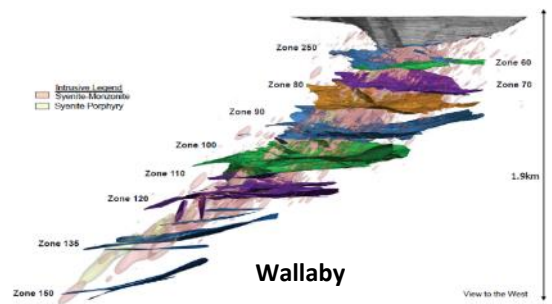
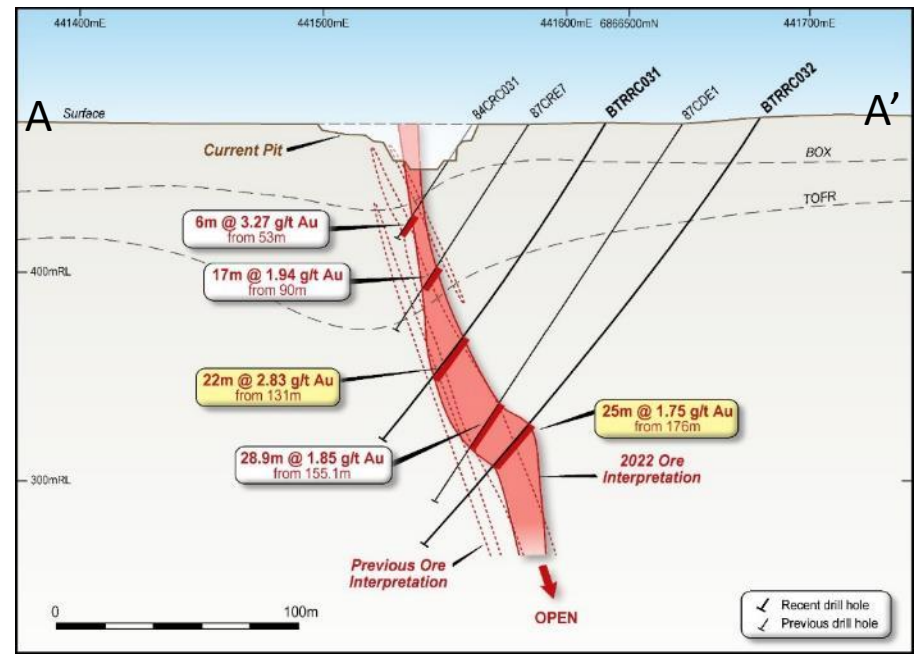
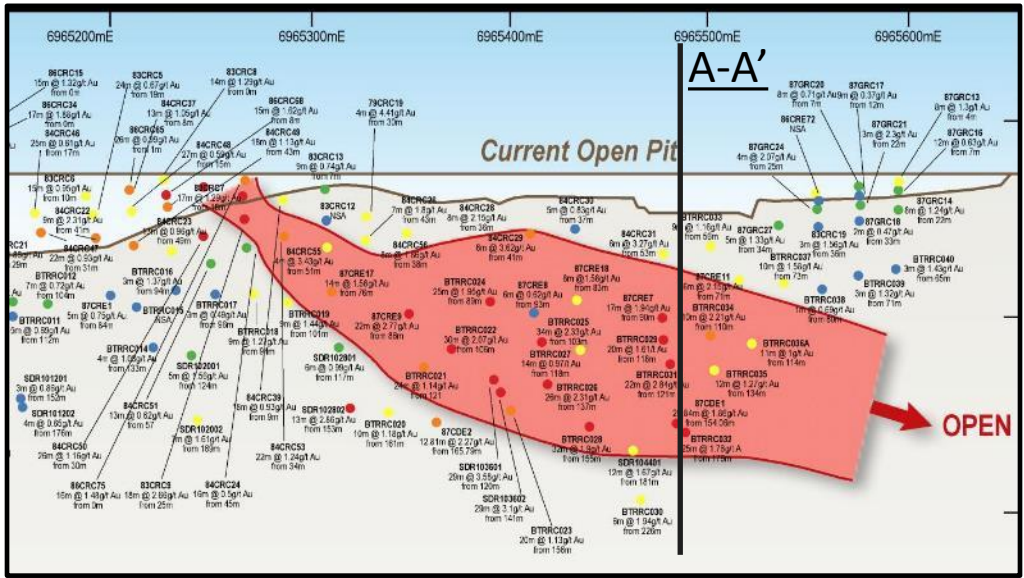
# CORK TREE WELL DEPOSIT

## UG MINING OPPORTUNITY

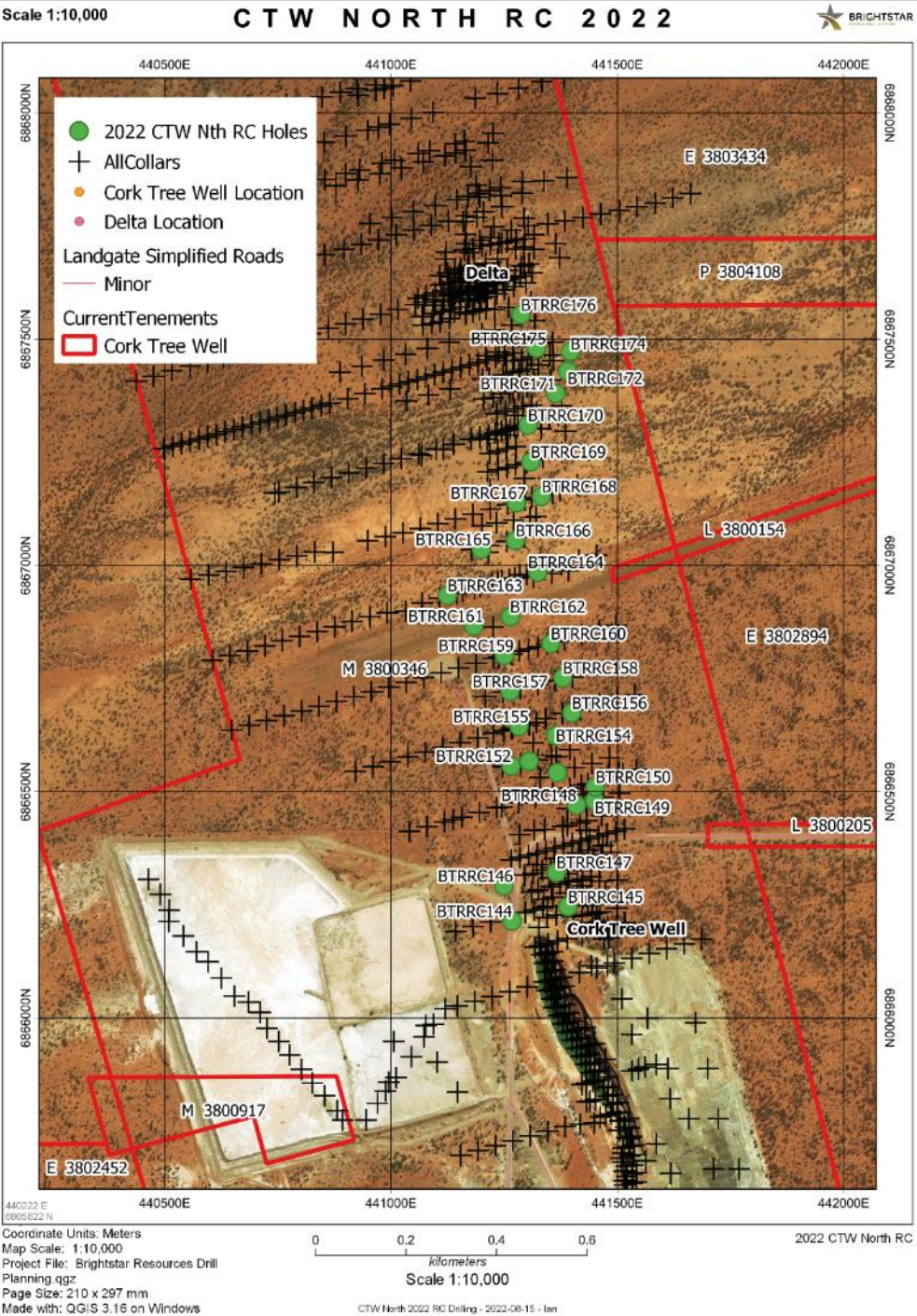
At the northern end of the historic Southern open pit a sizable zone of consistent, thick mineralisation has been defined. This material plunges shallowly northward on the steeply easterly-dipping structure and is open to depth.

The thickness of intersections in this zone of mineralisation (17-30m) is sufficient at the average grade to support bulk underground mining studies.

Taking this orebody underground completely re-conceptualises the scale of the potential project. For example Wallaby (Gold Fields), Sunrise Dam (AngloGold Ashanti) Mines are both >1km deep. The deepest intersection at CTW is currently 300m and most of the Resource is within 200m of surface.





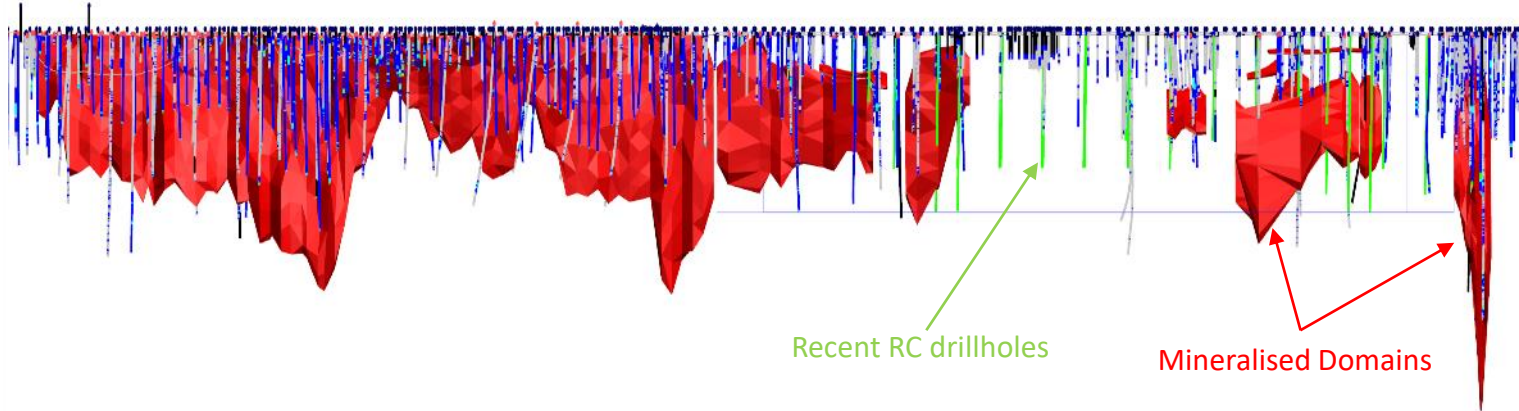


# CORK TREE WELL DEPOSIT

## NEXT STEPS

32 RC drillholes completed in June/July 2022 to improve drill spacings north of the open pits and untangle lithological and structural questions. These holes have the potential to join or at least grow domains in this northern area. Assays are awaited.

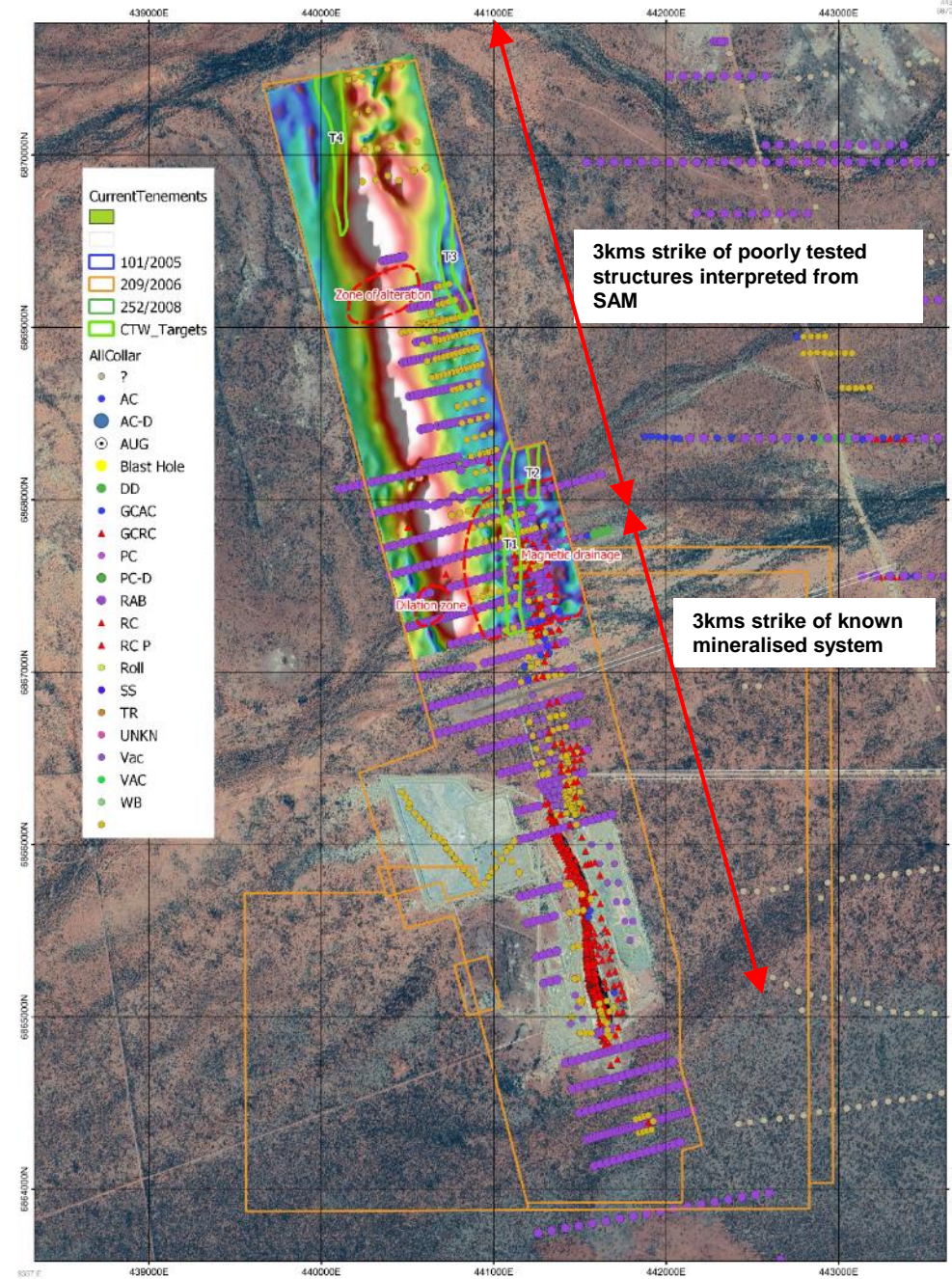
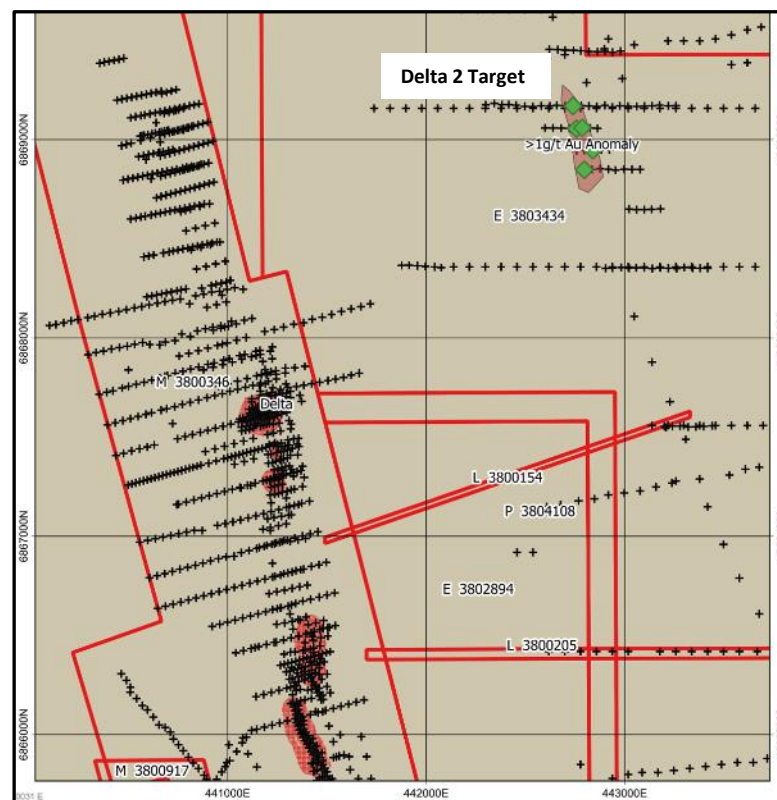
Diamond drilling is also planned down plunge at CTW central and Delta to help determine the overall scale of mineralisation and provide data for structural, mineralogical and metallurgical pre-feasibility studies.





# CORK TREE WELL DEPOSIT

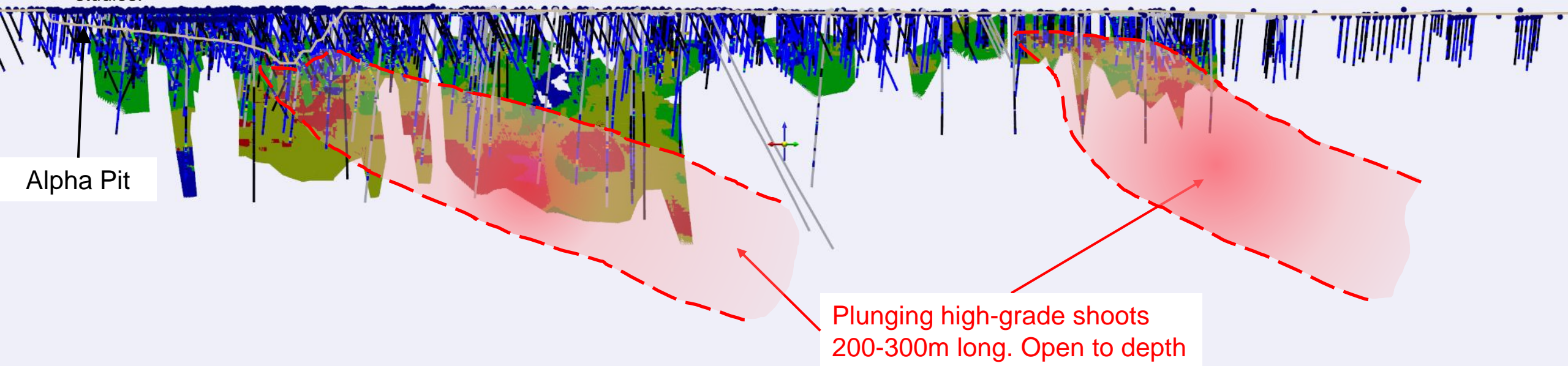
- The current JORC resource of 5.6Mt at 1.4g/t for 252koz is located in the southern 3km of strike of the system with limited testing in the remaining 3km of strike extent in the northern part of the target area.
- SAM survey performed for Brightstar Resources in January 2020 indicates similar litho-structural environment in the north as discovered by drilling in the south.
- Opportunities for new discoveries north along strike as well as elsewhere on the CTW leaseholdings (e.g. Delta 2) remain with the potential to grow the area into a significant camp with successful exploration.





# ALPHA DEPOSIT

- JORC Resource of 1.4Mt at 2.3g/t for 106koz Au within 15km of processing plant (c.58% M&I)
- Grades look to be increasing at depth and down plunge – open at depth
- Suitable for Open pit and underground mining studies
- Potential for targeted extensional and potential infill drilling programmes depending on mining studies.



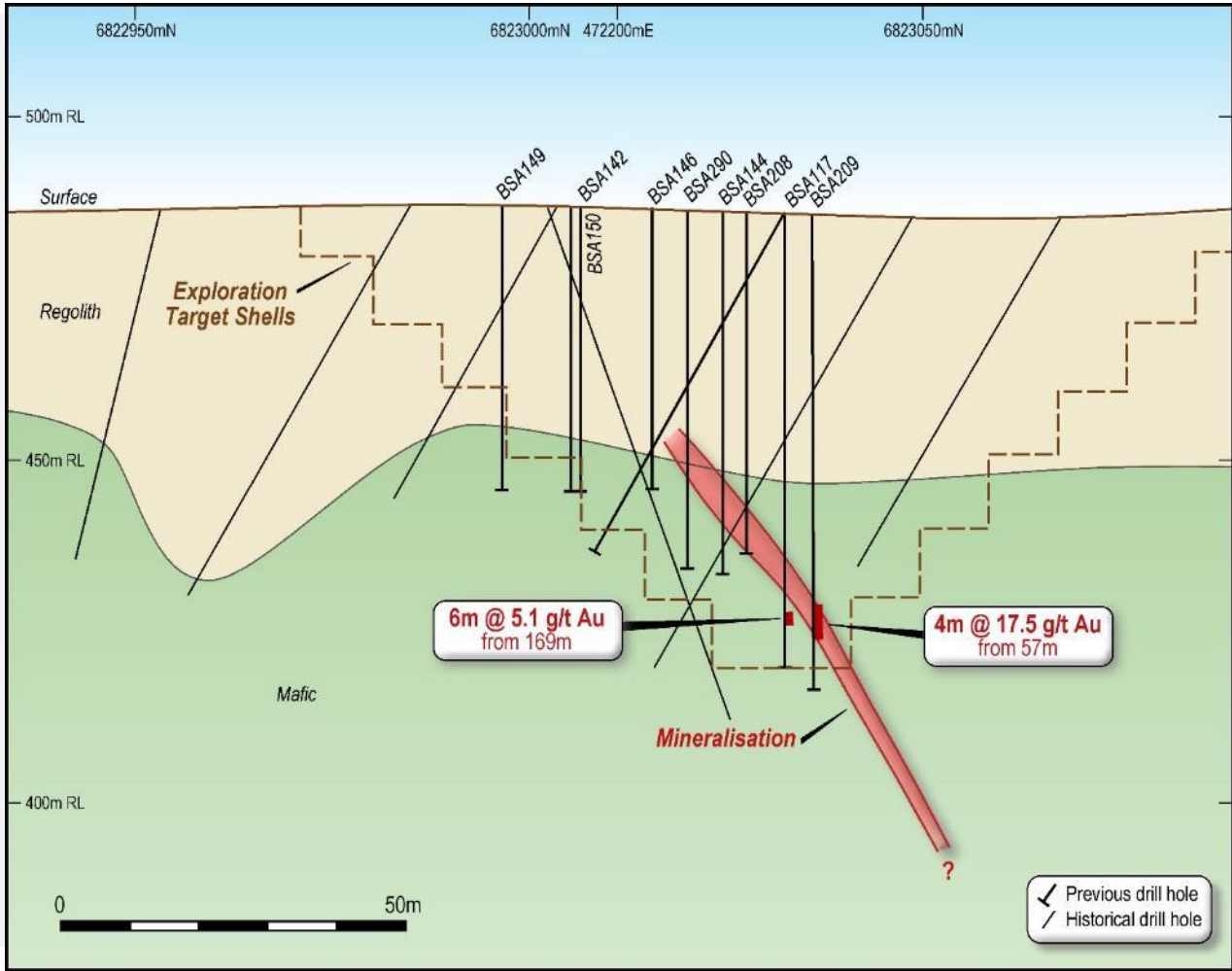
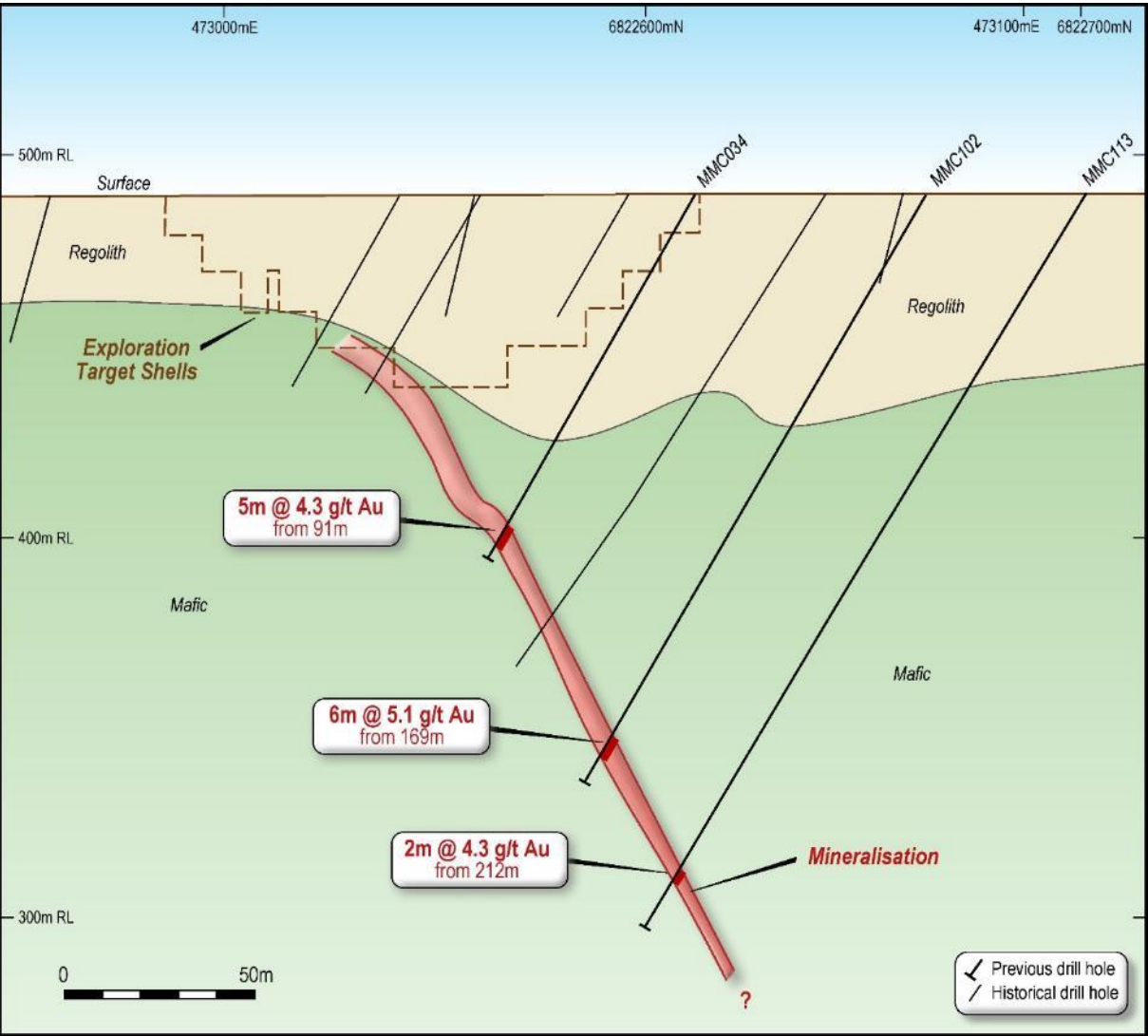
0Z 0Z



**Note:** Oblique Orthogonal view looking down to the WNW



# ALPHA SECTIONS





# ALPHA DEPOSIT

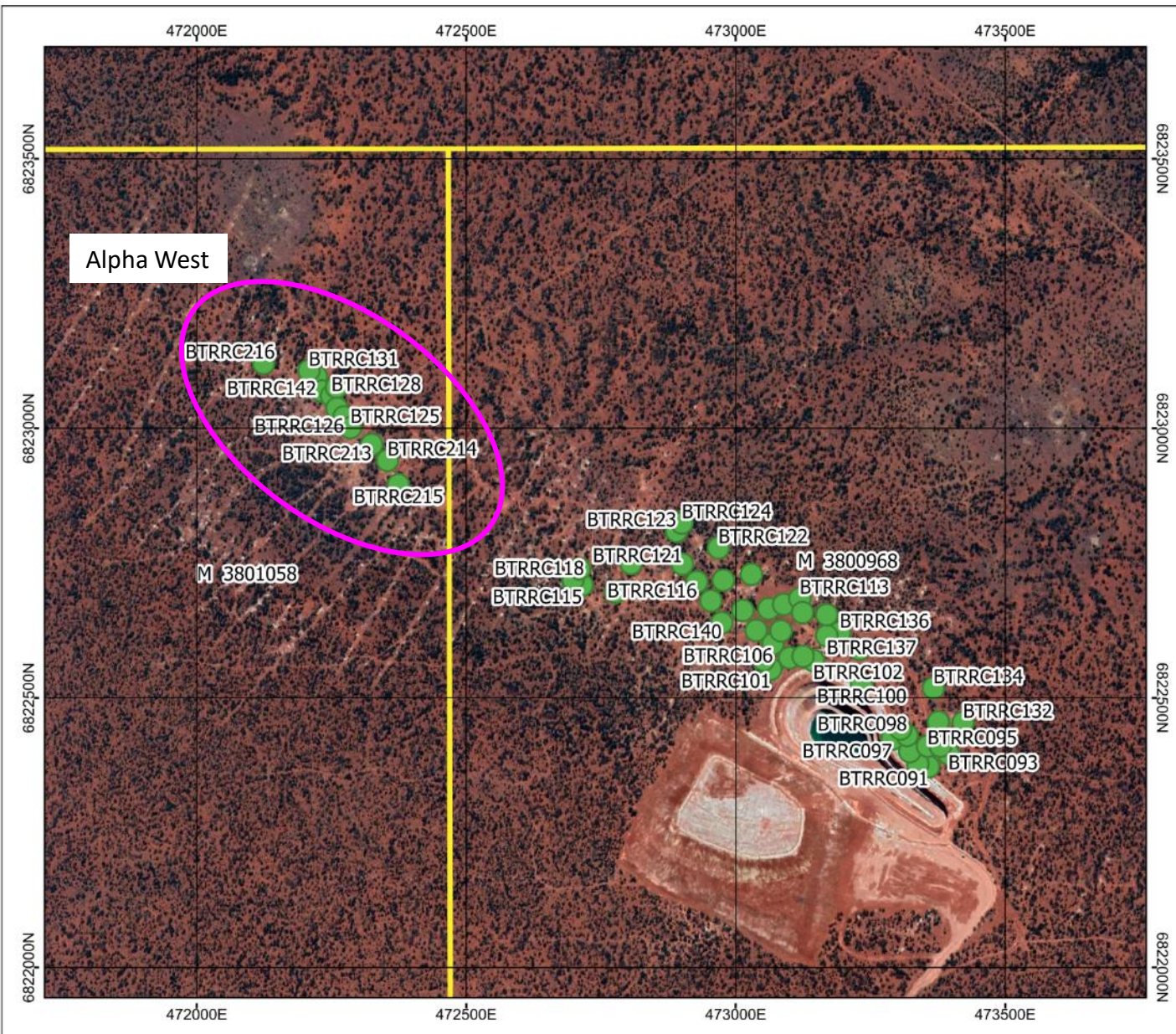
## EXPLORATION PLANS

41 RC drillholes to infill current model where needed, extend/improve confidence of other areas, and grow the Resource.

12 RC drillholes completed at Alpha West.  
Waiting on results.

No official historical production available from this pit however it is estimated that 22kOz were taken from Alpha and Beta together.

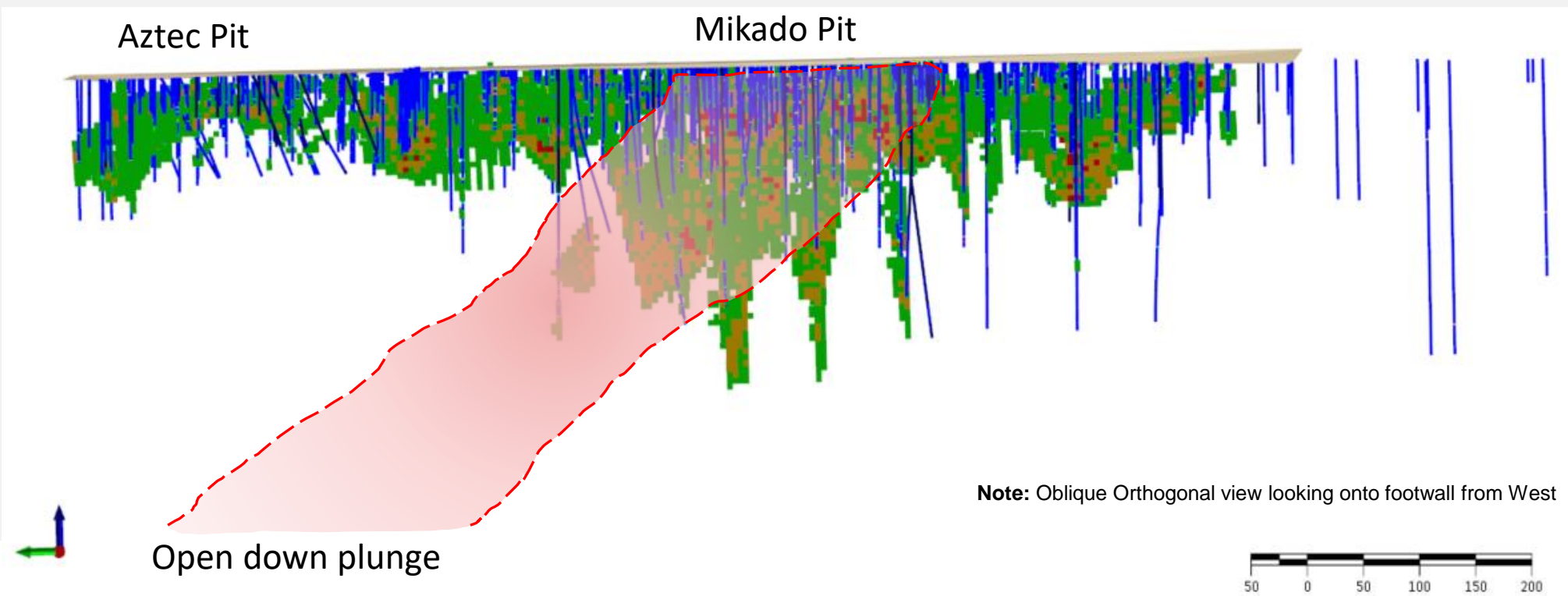
Opportunity for underground development due to the average higher grade in this deposit.



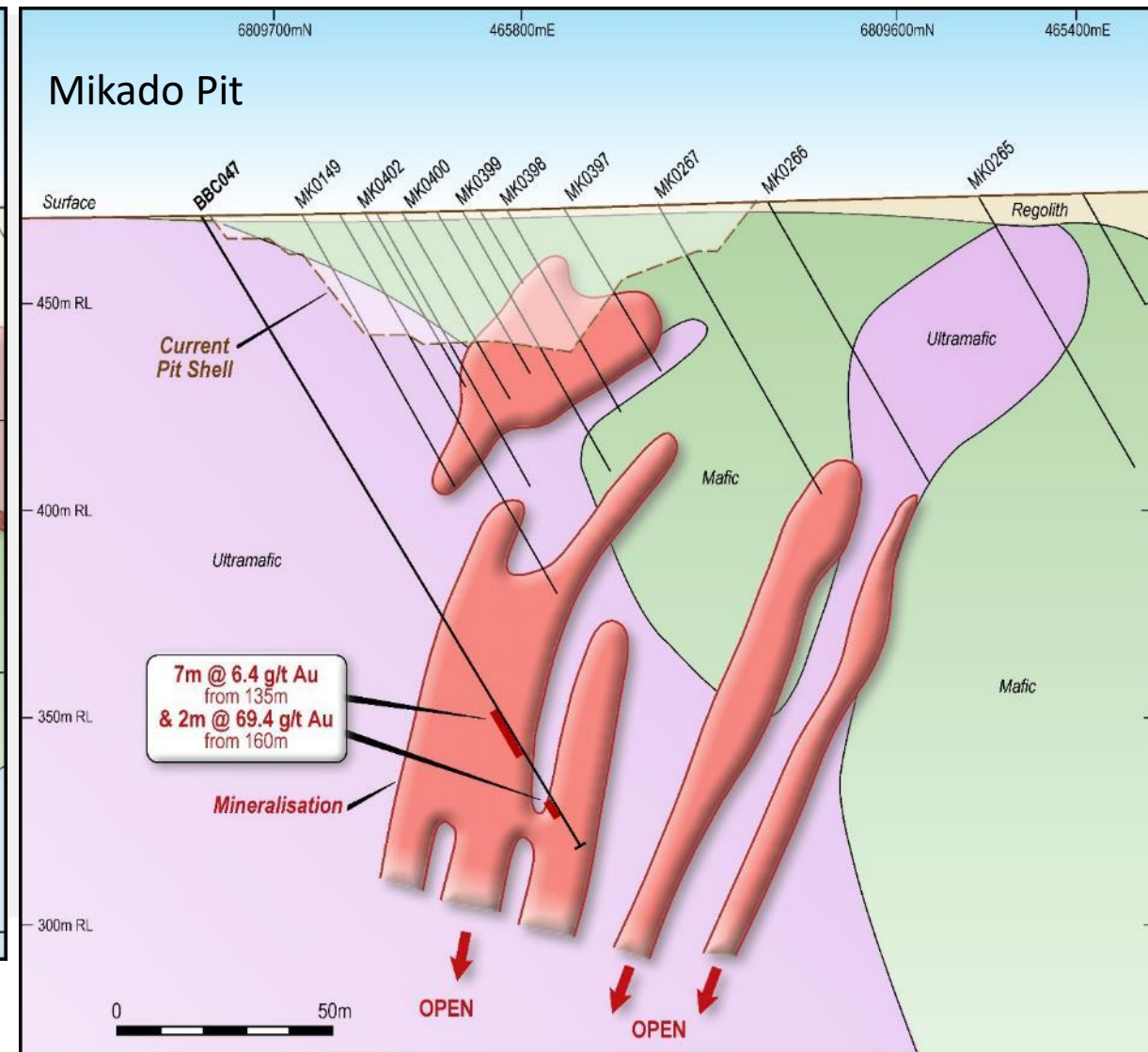
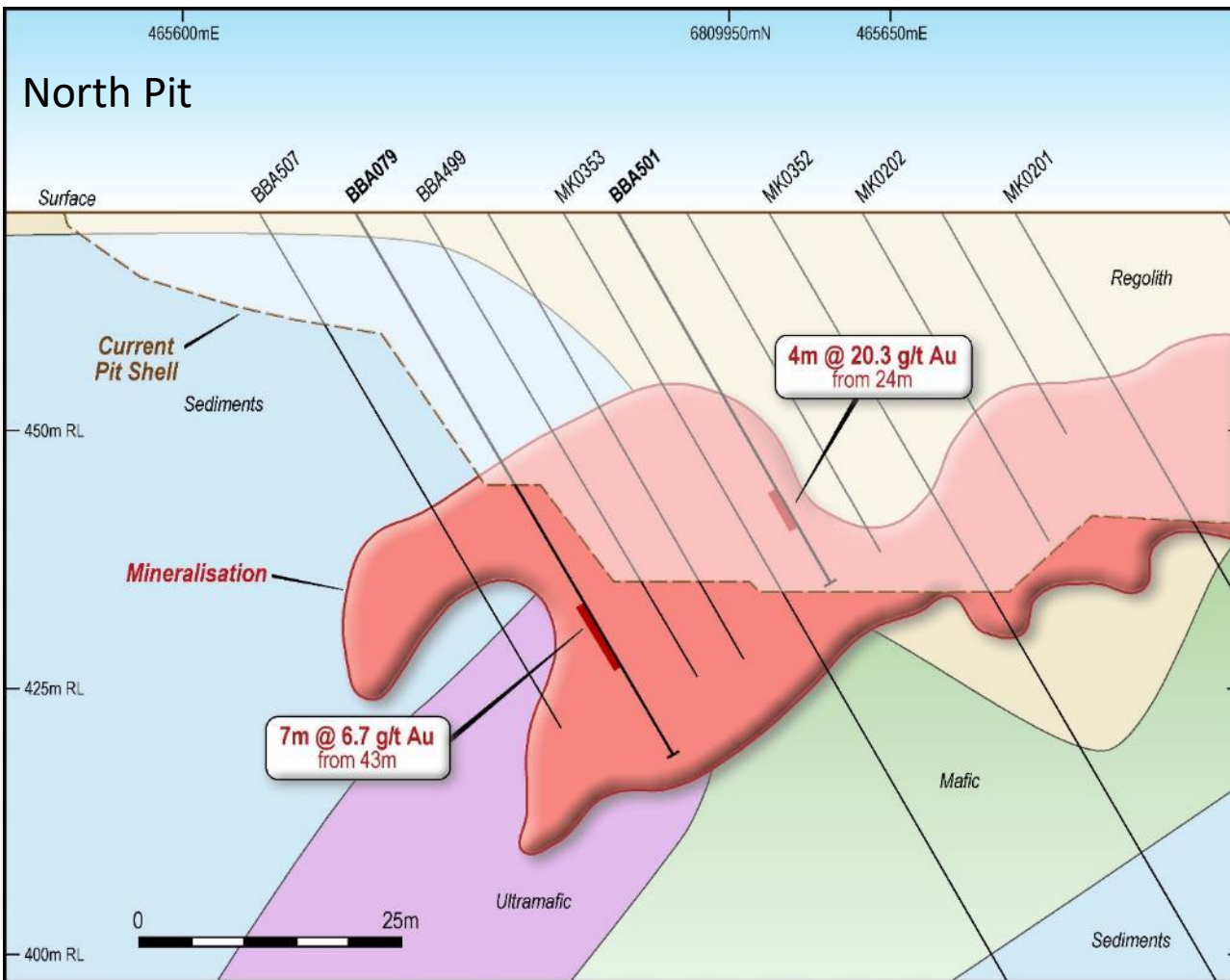


# BETA DEPOSIT

- JORC Resource of 1.9Mt at 1.7g/t for 101koz Au (c.49% M&I)
- Grades look to be increasing at depth and down plunge – open at depth
- Brightstar Beta deposit lies adjacent to Brightstar's 60-man camp and Processing Infrastructure
- Historical production (from both Alpha & Brightstar) of c.22koz Au



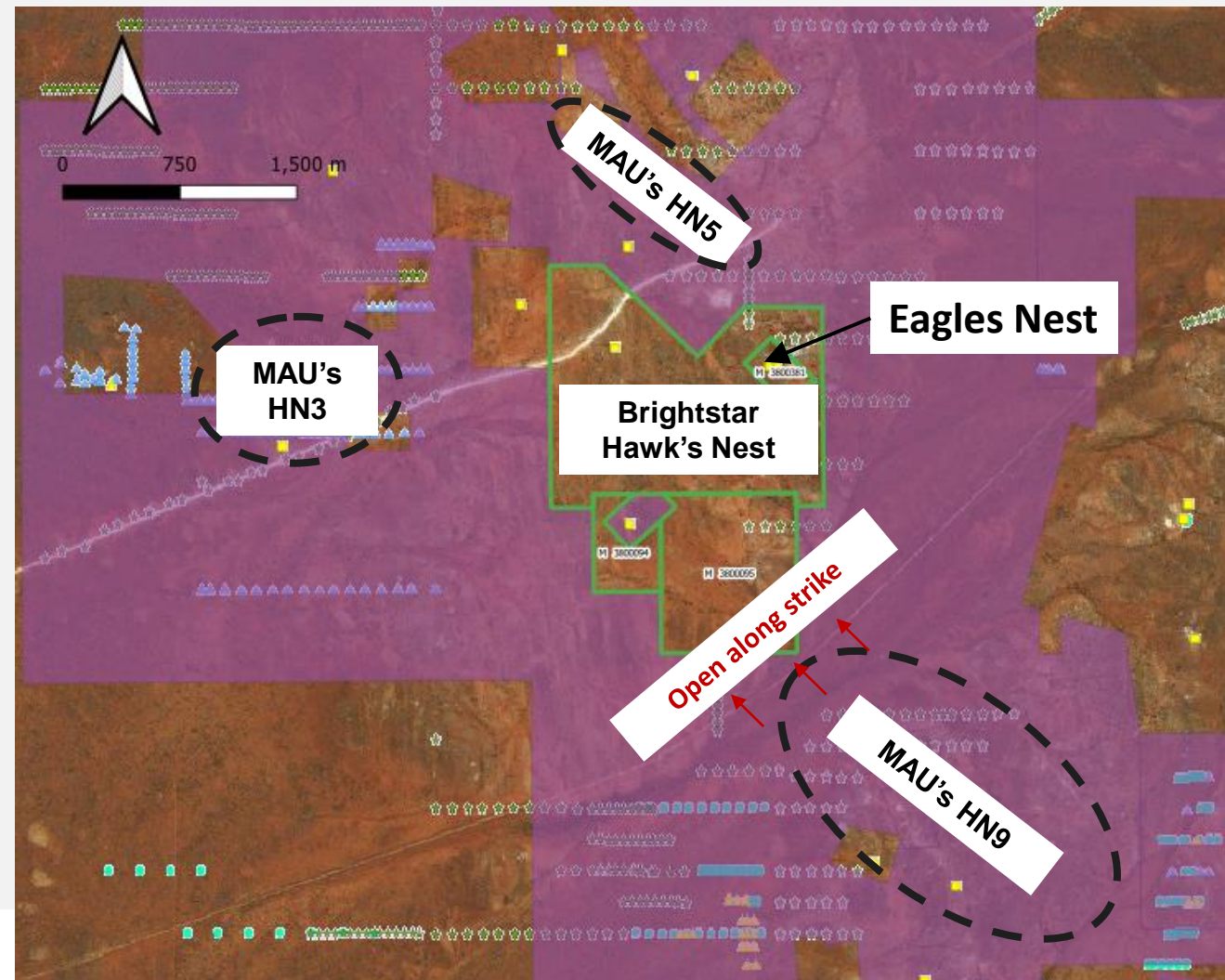
# BETA SECTIONS





# HAWKS NEST PROJECT

- Well known in Laverton for prospecting, dry-blowing and small early 20<sup>th</sup> century workings
- Magnetic Resources (ASX: MAU) recently announced their maiden resource for the Laverton and Homeward Bound projects with 13.1Mt @ 1.22g/t Au for 511,000oz Au<sup>1</sup>
- 87% of the resource is within 100m of the surface.
- MAU is proposing that HN9 is a flat lying structure, similar to Wallaby (+7Moz), Sunrise Dam (10Moz) and Jupiter (+1Moz).
- Brightstar Resources four mining leases sit within a triangle produced by HN3, HN5, and HN9.
- Eagle's Nest prospect historical production from 19<sup>th</sup> Century ~1000oz.
- Planned RC drill program to test for extensions of Eagle's Nest structure.

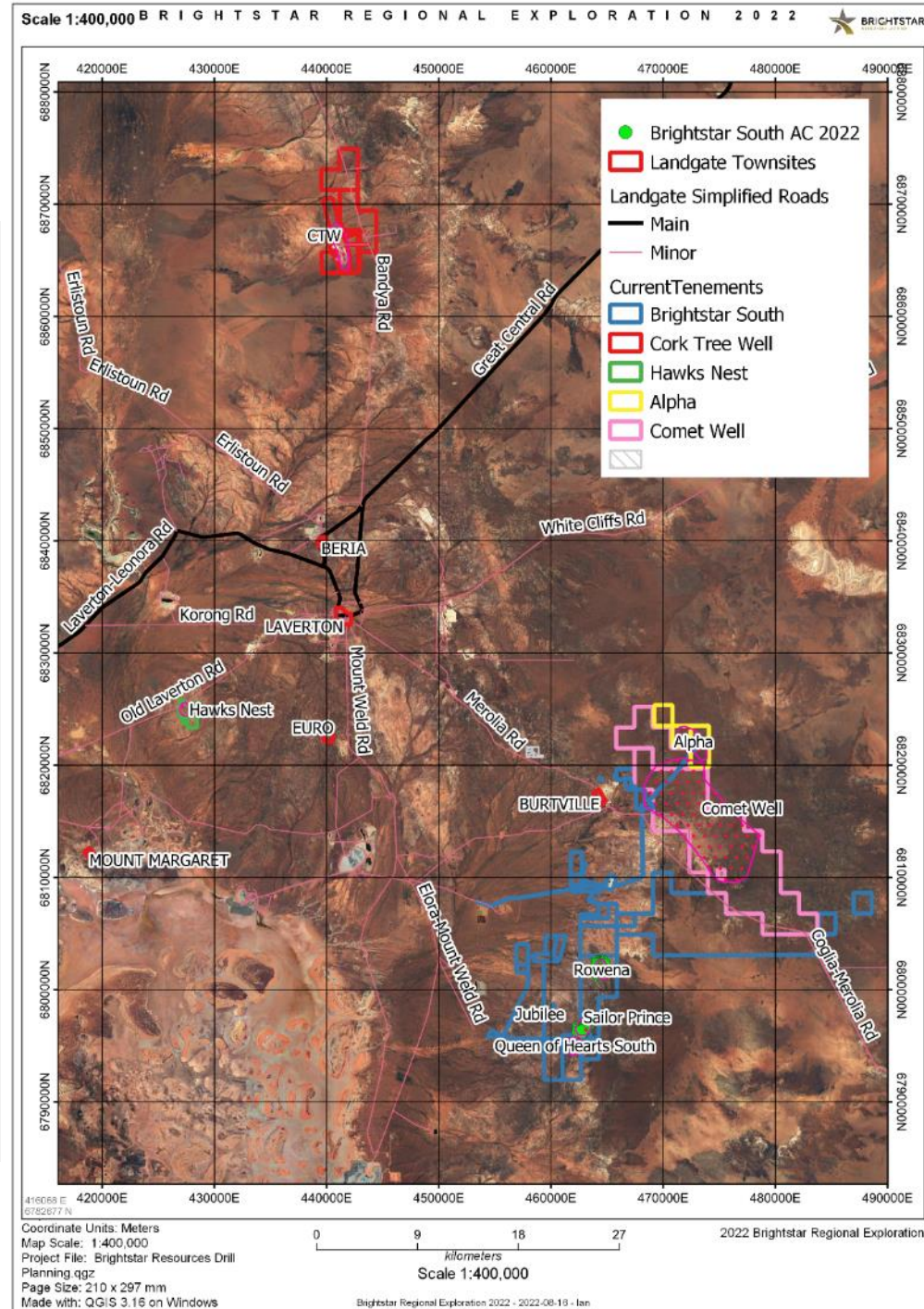




# REGIONAL EXPLORATION

## REGIONAL TARGETING

- Regional exploration has been mainly focused on the Brightstar South package with successful aircore programs identifying anomalous material at Jubilee, Rowena, and Sailor Prince.
- Other regional work was commenced at Delta 2 prospect in the Cork Tree Well project area when that lease was obtained in March 2022.
- Future work to be undertaken at Queen of Hearts South, Ophir Bore, and Comet Well.
- Dr. Nigel Brand (renowned geochemist and explorationist) is working with Brightstar to generate targets and create an efficient exploration strategy for the Comet Well project area.



# STRATEGIC PROCESSING INFRASTRUCTURE

COMO Engineers confirm low-cost refurbishment and upgrade of the Brightstar Plant to c.650ktpa



## EXCELLENT PROCESSING INFRASTRUCTURE

- 485ktpa processing plant<sup>1</sup>
- Supporting infrastructure, tailings dam and process water pond

## LOW-COST REFURBISHMENT & UPGRADE TO c.650ktpa<sup>2</sup>

- **COMO Engineers estimate a cost of \$5.5m to refurbish and upgrade the plant to c.650ktpa<sup>3</sup>** (incl. \$1.9m in owner's cost & a 30% contingency)
- Low-cost greatly assisted by commencement of a plant upgrade in 2014, where a new secondary crusher, 450kW ball mill, gravity circuit and elution circuit were procured and partly installed
- The installation of the equipment was not completed – all surplus equipment remained on site under care & maintenance
- Power generation capacity from refurbished gensets support expansion

## STRATEGICALLY LOCATED

- Located just c.40km south of Laverton which is serviced by three flights per week from Perth
- Brightstar's 460koz Resource is concentrated within a 70km radius of the plant, which **includes 208koz within just 20km of the plant**



# KEY FIXED & MOBILE PLANT

Earthmoving and other mobile plant in place for processing facility



## 60 PERSON CAMP INFRASTRUCTURE

- 60-person accommodation camp

## MOBILE PLANT FOR PROCESSING FACILITY

- 30 Tonne Crane,
- Forklift,
- Bobcat,
- 2 x 966 Loaders and
- Light Vehicles

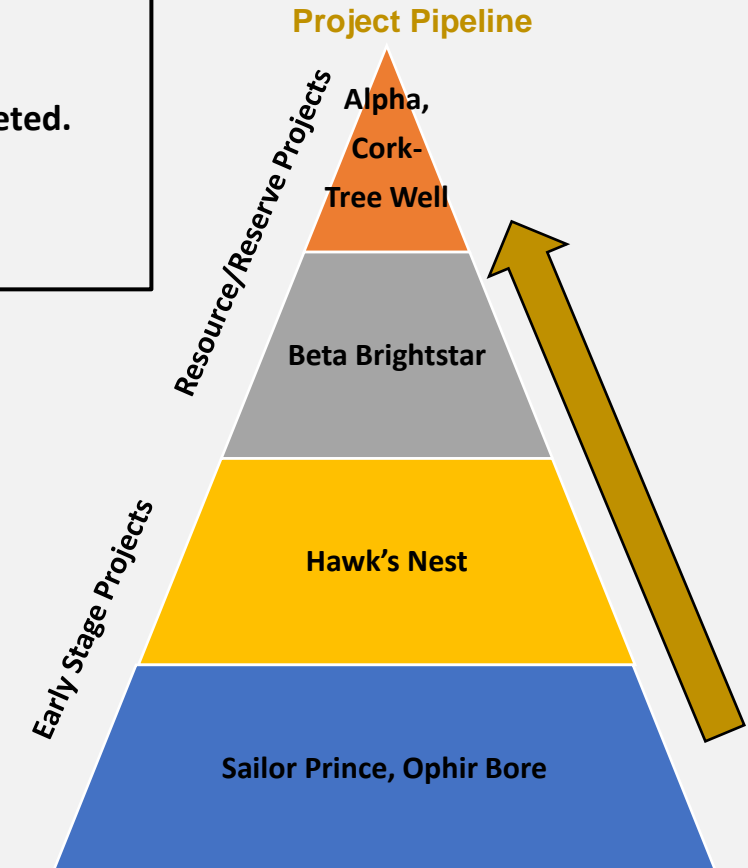
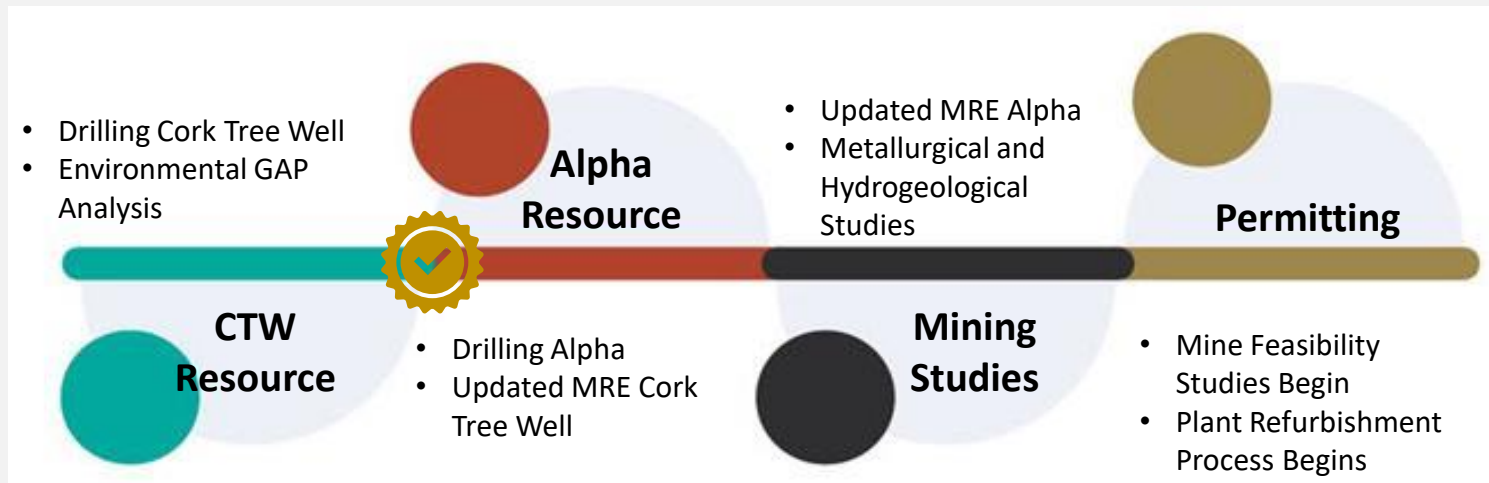




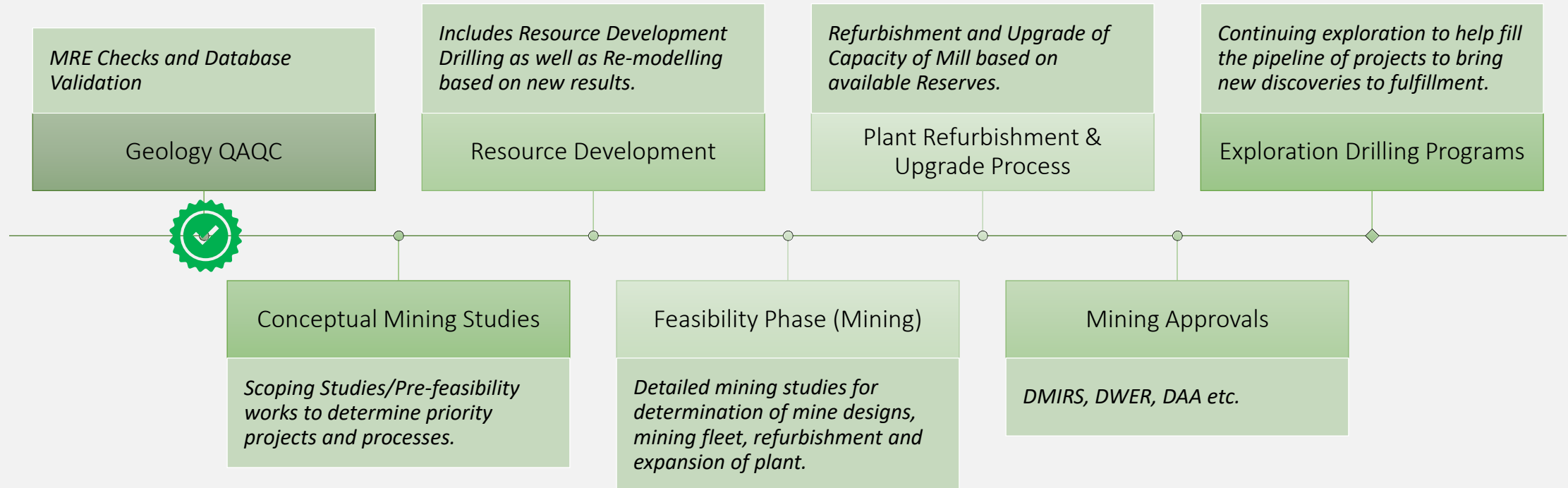
# MILESTONES AND GATES

## Work Completed in 2022:

- Comprehensive Modern MRE completed for CTW – **completely new interpretation and estimation completed.**
- Detailed Drill Programs – **Res Dev and Extensional Programs completed at CTW and Alpha West**
- Exploration Drill Programs – **generative programs in the Brightstar South and CTW project areas.**



# BRIGHTSTAR RESOURCES STRATEGIC PLAN





# THANK YOU

**BRIGHTSTAR RESOURCES LIMITED**

**For more information please contact**

Mr William Hobba

Managing Director

[billh@brightstarresources.com.au](mailto:billh@brightstarresources.com.au)

Or

Mr Ian Pegg

Exploration Manager

[ianp@brightstarresources.com.au](mailto:ianp@brightstarresources.com.au)

