



# TROPICANA ANALYST VISIT 7 September 2022





# DISCLAIMER – AngloGold Ashanti



Certain statements contained in this document, other than statements of historical fact, including, without limitation, those concerning the economic outlook for the gold mining industry, expectations regarding gold prices, production, total cash costs, all-in sustaining costs, all-in costs, cost savings and other operating results, return on equity, productivity improvements, growth prospects and outlook of AngloGold Ashanti Limited's (the "Company", "AngloGold Ashanti" or "AGA") operations, individually or in the aggregate, including the achievement of project milestones, commencement and completion of commercial operations of certain of AngloGold Ashanti's exploration and production projects and the completion of acquisitions, dispositions or joint venture transactions, AngloGold Ashanti's liquidity and capital resources and capital expenditures, the consequences of the COVID-19 pandemic and the outcome and consequences of any potential or pending litigation or regulatory proceedings or environmental, health and safety issues, are forward-looking statements regarding AngloGold Ashanti's operations, economic performance and financial condition. These forward-looking statements or forecasts involve known and unknown risks, uncertainties and other factors that may cause AngloGold Ashanti's actual results, performance or achievements to differ materially from the anticipated results, performance or achievements expressed or implied in these forward-looking statements. Although AngloGold Ashanti believes that the expectations reflected in such forward-looking statements and forecasts are reasonable, no assurance can be given that such expectations will prove to have been correct. Accordingly, results could differ materially from those set out in the forward-looking statements as a result of, among other factors, changes in economic, social, political and market conditions, including related to inflation or international conflicts, the success of business and operating initiatives, changes in the regulatory environment and other government actions, including environmental approvals, fluctuations in gold prices and exchange rates, the outcome of pending or future litigation proceedings, any supply chain disruptions, any public health crises, pandemics or epidemics (including the COVID-19 pandemic), and other business and operational risks and other factors, including mining accidents. For a discussion of such risk factors, refer to AngloGold Ashanti's annual report on Form 20-F for the year ended 31 December 2021 filed with the United States Securities and Exchange Commission (SEC). These factors are not necessarily all of the important factors that could cause AngloGold Ashanti's actual results to differ materially from those expressed in any forward-looking statements. Other unknown or unpredictable factors could also have material adverse effects on future results. Consequently, readers are cautioned not to place undue reliance on forward-looking statements. AngloGold Ashanti undertakes no obligation to update publicly or release any revisions to these forward-looking statements to reflect events or circumstances after the date hereof or to reflect the occurrence of unanticipated events, except to the extent required by applicable law. All subsequent written or oral forward-looking statements attributable to AngloGold Ashanti or any person acting on its behalf are qualified by the cautionary statements herein.

The information included in this presentation has not been reviewed or reported on by AngloGold Ashanti's external auditors.

## **Non-GAAP financial measures**

This communication may contain certain "Non-GAAP" financial measures. AngloGold Ashanti utilises certain Non-GAAP performance measures and ratios in managing its business. Non-GAAP financial measures should be viewed in addition to, and not as an alternative for, the reported operating results or cash flow from operations or any other measures of performance prepared in accordance with IFRS. In addition, the presentation of these measures may not be comparable to similarly titled measures other companies may use.

**Website: [www.anglogoldashanti.com](http://www.anglogoldashanti.com)**

*Some photographs showing employees and / or community members in this presentation were taken prior to the onset of the COVID-19 pandemic.*

# CAUTIONARY STATEMENT – Regis Resources

This presentation contains only a brief overview of Regis Resources Limited and its associated entities ("Regis or RRL") and their respective activities and operations. The contents of this presentation, including matters relating to the geology of Regis' projects, may rely on various assumptions and subjective interpretations which it is not possible to detail in this presentation and which have not been subject to any independent verification.

This presentation contains a number of forward-looking statements that are subject to risk factors associated with gold exploration, mining and production businesses. It is believed that the forward looking statements in this presentation are reasonable based on information available as at the date of this presentation but known and unknown risks and uncertainties, and factors outside of Regis' control, may cause the actual results, performance and achievements of Regis to differ materially from those expressed or implied in this presentation. These risk factors include, but are not limited to, changes in commodity prices, foreign exchange fluctuations and general economic conditions, increased costs and demand for production inputs, the speculative nature of exploration and project development, including the risks of obtaining necessary licenses and permits and diminishing quantities or grades of reserves, political and social risks, changes to the regulatory framework within which the Company operates or may in the future operate, environmental conditions including extreme weather conditions, recruitment and retention of personnel, industrial relations issues and litigation. Readers are cautioned not to place undue reliance on forward looking statements. No representation or warranty, express or implied is made as to the accuracy, currency or completeness of the information in this presentation, nor the future performance of Regis. Except as required by applicable law or regulations, Regis does not undertake to publicly update or review any forward-looking statements, whether as a result of new information or future events. Current and potential investors and shareholders should seek independent advice before making any investment decision in regard to Regis or its activities.

The information in this presentation that relates to production targets and associated forecast financial information is extracted from the ASX announcement released 26 July 2022 entitled "June Quarterly and Strategy Outlook". Mineral Resources, Ore Reserves and Exploration Results are extracted from the Mineral Resource and Ore Reserve Statement released to the ASX on 8 June 2022 (the Relevant ASX Announcements).

In each case, appropriate Competent Person's consents were obtained for the release of that information in the Relevant ASX Announcements and those consents remain in place for subsequent releases by the Company of the same information in the same form and context, until the consent is withdrawn or replaced by a subsequent report and accompanying consent.

The Company confirms that it is not aware of any new information or data that materially affects the information included in the Relevant ASX Announcements and in each case the Production Targets, forecast financial information and estimates of Mineral Resources or Ore Reserves, that all material assumptions and technical parameters underpinning that information in the Relevant ASX Announcements, continue to apply and have not materially changed. The Company confirms that the form and context in which the Competent Person's findings are presented have not been materially modified from the original ASX announcement.

This presentation uses mineral reserves and mineral resources classification terms that comply with reporting standards in Australia. These standards differ significantly from the requirements of the United States Securities and Exchange Commission that are applicable to domestic United States reporting companies and, therefore, are not comparable.

Past performance and pro-forma financial information given in this document, including in relation to upgrades to resources and reserves, is given for illustrative purposes only and should not be relied upon as (and is not) an indication of future performance, nor of Regis' views on the Company's future financial performance or condition. Investors should note that past performance of Regis, including the historical trading prices of its shares, cannot be relied upon as an indicator of (and provides no guidance as to) Regis' future performance, including the future trading price of its shares. The historical information included in this presentation is, or is based on, information that has previously been released to the market.

As noted above, an investment in Regis shares is subject to known and unknown risks, some of which are beyond the control of Regis. Regis does not guarantee any particular rate of return or the performance of the Company, nor does it guarantee the repayment of capital from Regis or any particular tax treatment.

The distribution of this presentation (including an electronic copy) outside of Australia (including the United States) may be restricted by law and any such restrictions should be observed. Any non-compliance with these restrictions may contravene applicable securities laws.

ASX announcements are available on the Company's website at [www.regisresources.com.au](http://www.regisresources.com.au)

# TROPICANA OVERVIEW

## Location:

330 km ENE of Kalgoorlie in WA

## Ownership:

AngloGold Ashanti Australia Ltd (70% and manager), Regis Resources Ltd (30%).

**Village Size:** 1,042 rooms.

**Ave People Per Day:** 612 (outside of major shuts) on site.

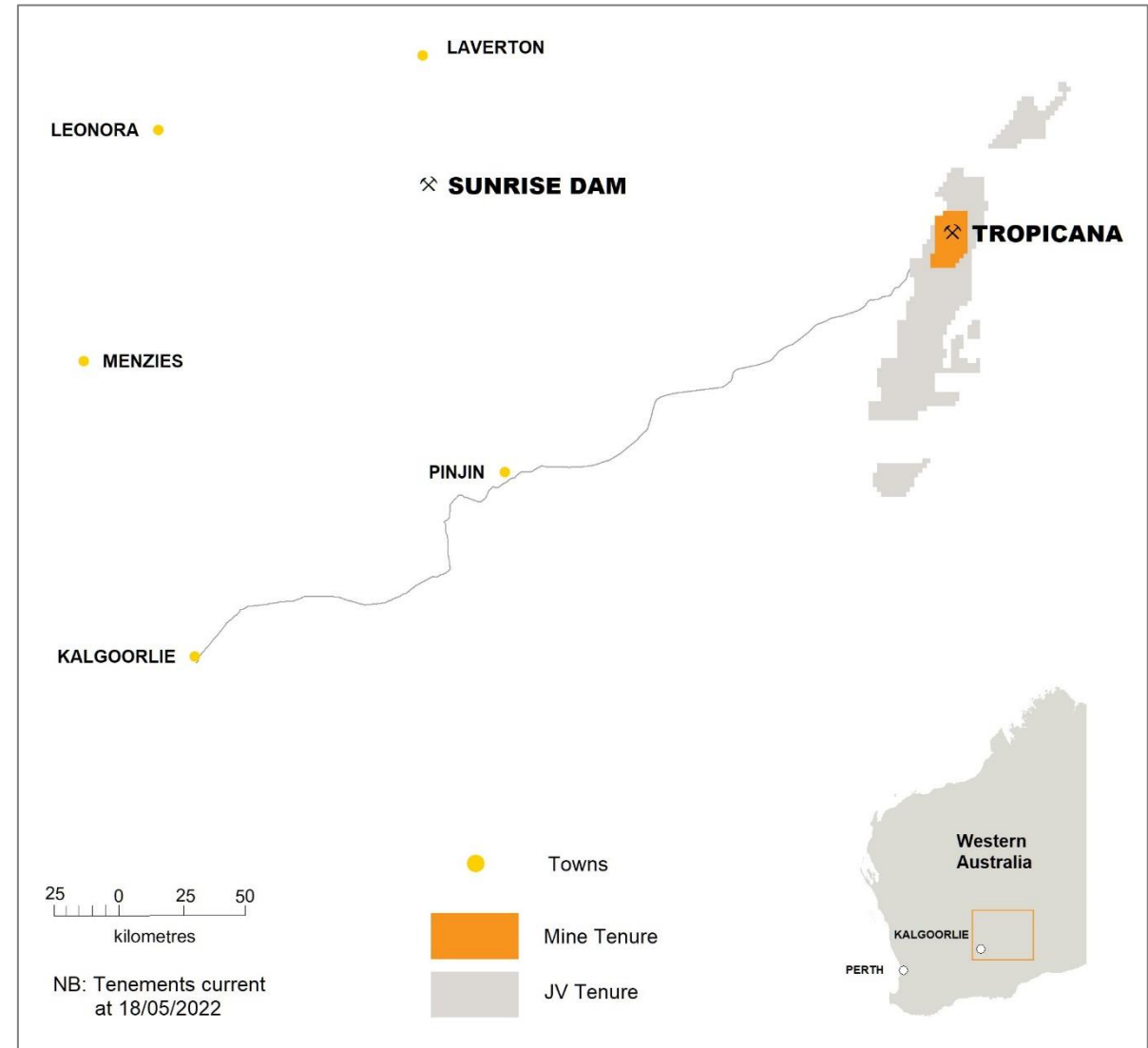
**Mining:** Conventional open cut and conventional mechanised underground mining methods. Alliance style contract with Macmahon (both Open Pit and UG).

**Processing:** Crushing, High Pressure Grinding, Ball Mills, CIL

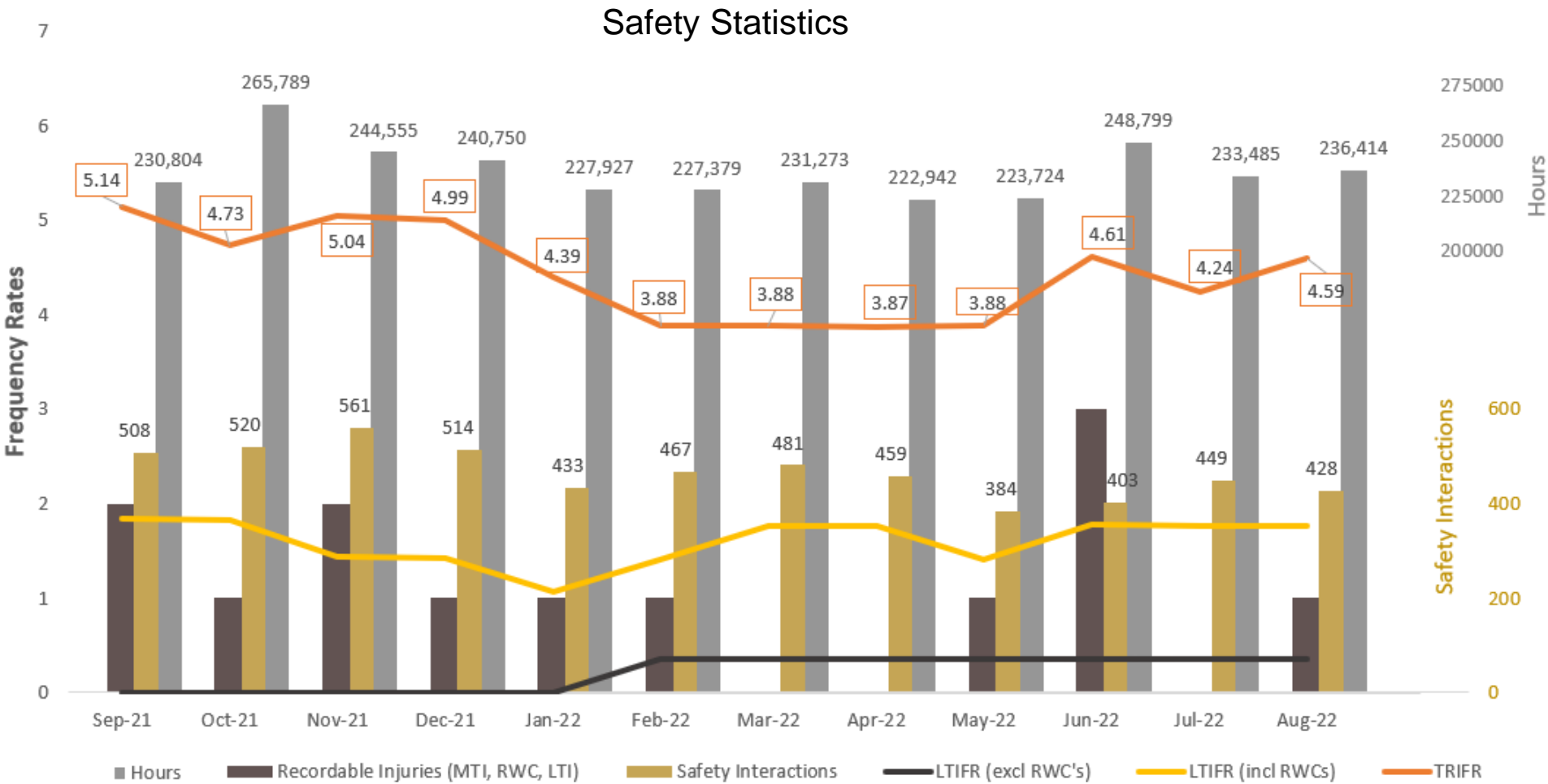
**Ore Reserve (100%)\*:** 43.1Mt grading 1.72 g/t for 2.38 Moz of contained gold.

**Mineral Resource - inclusive (100%)\*:** 126.2Mt grading 1.71 g/t for 6.95 Moz of contained gold.

*\*As at 31 December, 2021. Full details of the Ore Reserves and Mineral Resource estimates, including applicable JORC statements, are available on the AngloGold Ashanti website at [www.anglogoldashanti.com](http://www.anglogoldashanti.com)*

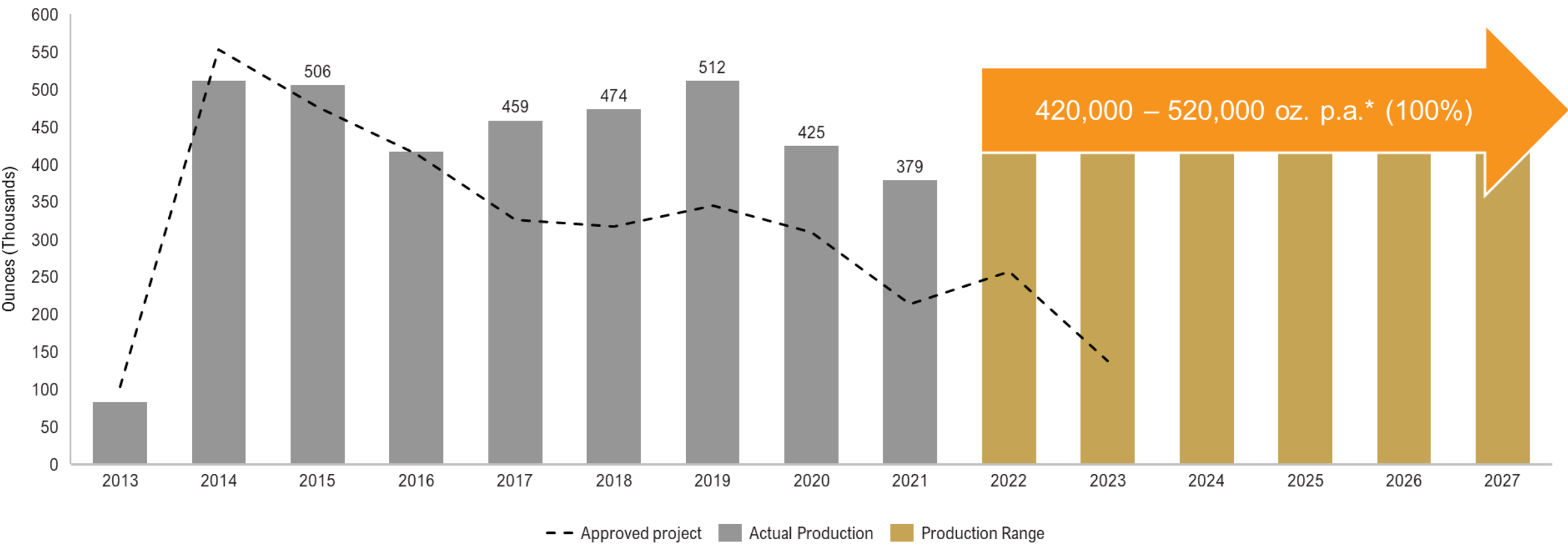


# SAFETY



# TROPICANA – A TRACK RECORD OF EXCEEDING EXPECTATIONS

*Continuous improvement and delivery ...*



*... from a true Tier One asset.*

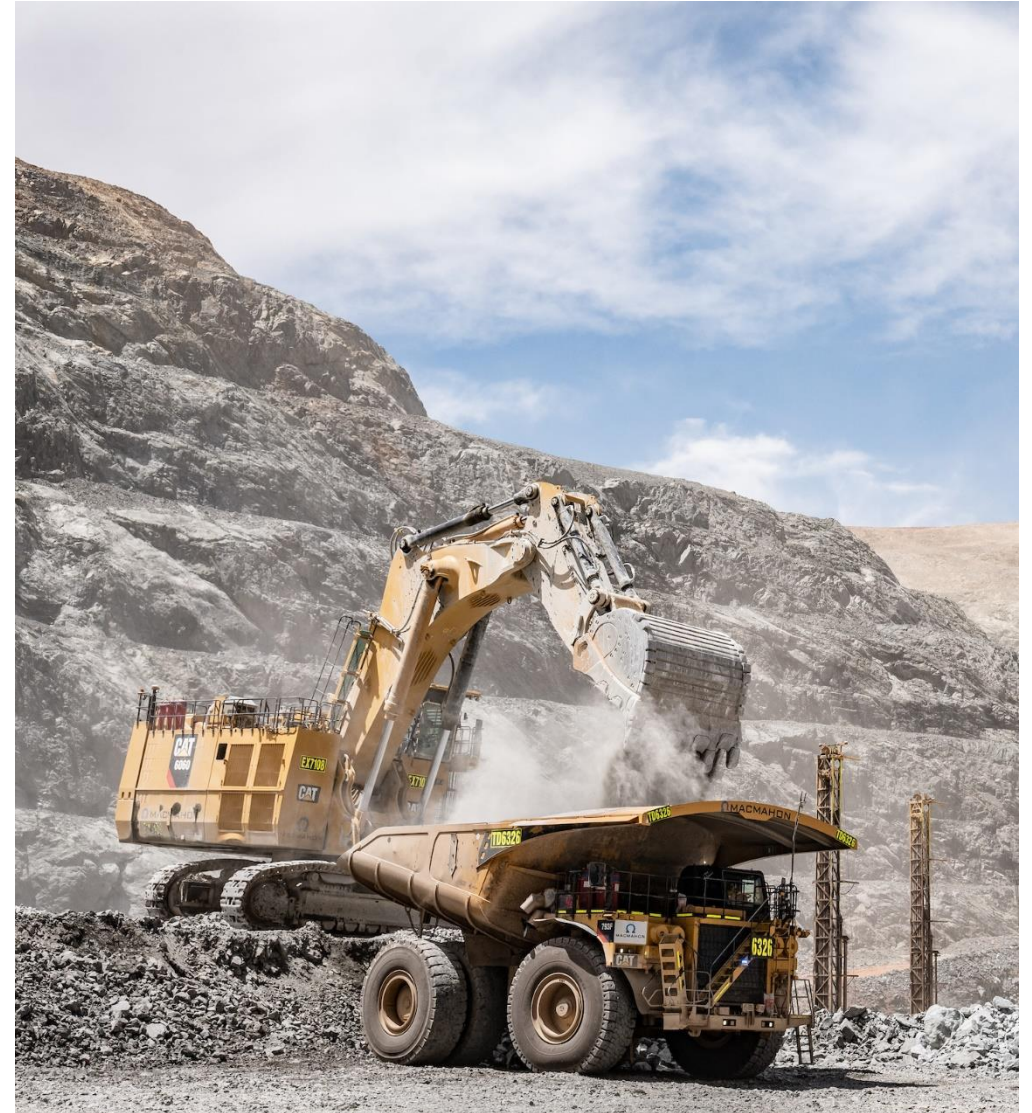
*\*Average production range (100%) subject to plans.*



# OPEN PIT MINING - OVERVIEW

---

- Conventional drill & blast, load and haul open pit mining
- Most material mined is hard rock and requires drilling and blasting with a small proportion of free dig in recent pit expansion areas
- Mining is carried out on blasting benches of up to 12m in height with flitch mining of ore and full height mining of waste
- Ore is loaded by face shovel, loader or backhoe depending on lode geometry and is hauled to the ROM pad in 226t trucks where it is fed to the crusher or stored on long-term stockpiles
- Waste rock is hauled to nearby waste rock dumps alongside the pits or in-pit dumped
- Haul roads are 3 times the width of a Caterpillar 793 truck to minimise congestion
- Road conditions are good with fresh waste rock used as road base for sheeting haul roads





# OPEN PIT MINING – GRADE CONTROL

- Close-spaced RC grade control drilling is completed on a nominal 12 m square collar spacing with drilling three to four 12m high benches ahead of the mining front so that the information is available in a timely manner prior to mining
- MP3 software conditional simulation is used to model ore to maximise the ore recovery according to a loss function
- Blending of oxide and fresh ore is either done on the ROM pad using a layered approach or via a ratio of material drawn from separate ROM fingers





# OPEN PIT MINING - FLEET

- Macmahon is the alliance mining contractor, providing operators and maintaining the mining equipment
- There is a four-bay OP workshop to service and repair mine vehicles, designed to suit the size of the fleet at Tropicana, along with a separate boilermaker's workshop for major weld repairs. It is equipped with an overhead crane large enough to remove trays from the trucks
- An on-site tyre repair facility significantly reduces tyre repair costs and time lost during transportation



Excavators



Haul trucks



Drill rigs



Other

## Mining equipment

- 1 x Hitachi 5600 hydraulic excavator
  - 2 x Caterpillar 6060 (1 x hydraulic face shovel, 1 x hydraulic excavator)
  - 2 x Caterpillar 6040 hydraulic excavators
  - 1 x Hitachi EX2500 & 1 x Hitachi EX1200 hydraulic excavator
- 17 x Caterpillar 793F haul trucks – 226-t capacity
  - 7 x Liebherr T264 Electric Diesel haul trucks
  - 4 x Caterpillar 789C haulage trucks for re-handle material
- 2 x Caterpillar MD6240 production drill rigs (229 mm + diameter blastholes)
  - 5 x Caterpillar MD6250 production drill rigs (203 mm diameter blastholes)
  - 6 x Sandvik DR560/580 drill rigs
- 2 x Caterpillar 992 front-end loaders
  - 1 x Caterpillar 993 front-end loader
  - 7 x Caterpillar D10T dozers
  - 1 x Caterpillar 854K wheel dozer
  - 3 x Caterpillar 777F water carts
  - 2 x Caterpillar M16/M18 graders.

# UNDERGROUND MINING - OVERVIEW

- Development of the Boston Shaker underground men began in May 2019 and commercial production was achieved in September 2020.
- Tropicana underground commenced production in Q4 2022
- Macmahon is the underground mining alliance contractor



Havana South

Havana

Tropicana

Boston Shaker

Havana South UG (conceptual)

Havana UG (conceptual)

Havana Link Drive

Tropicana UG Mine

Boston Shaker UG Mine



# UNDERGROUND MINING – BOSTON SHAKER

## Mining

- The Boston Shaker underground mine is designed for conventional mechanised mining methods
- Development utilises jumbos for drill and blast excavations
- Production activities are based around variations of long hole open stoping methods, depending on the width of the orebody
- Mining is being completed top-down with each level retreating to the central access
- The portal locations are in the north-eastern wall of the Tropicana Stage 2 pit and the northern wall of the Boston Shaker Stage 4 pit





# UNDERGROUND MINING – BOSTON SHAKER

## Grade Control

- Underground grade control is completed in advance of stope final designs by underground RC drilling from dedicated drill drives above the orebody
- Drill drives are designed parallel to the strike of the lodes in the hanging wall via an extension of the level access drive

## Waste

- Waste from development activities is unloaded into Tropicana pit from a tip head near the portal where it serves as backfill

## Haulage

- Material movement is by 60t underground trucks via a decline as the main access and haulage way





# PROCESSING OVERVIEW

---

## Key facts 2021

**Throughput:** 9.2 Mt

**Head grade:** 1.42 g/t

**Plant availability:** 97.2%

**Metallurgical recovery:** 89.8%

**Residence time:** +24 hrs



# PROCESSING

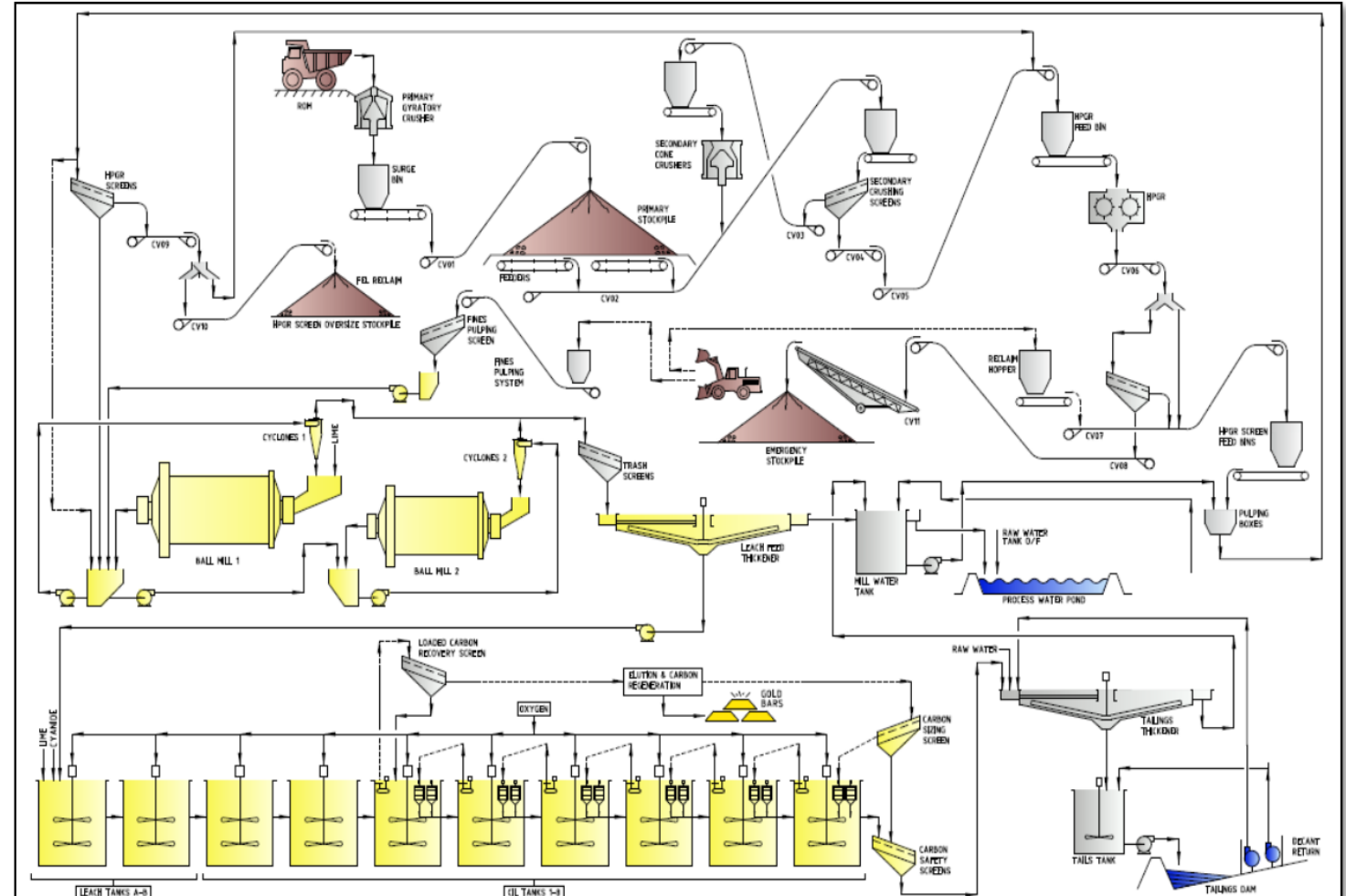
# Comminution

- 2-stage crushing to -38 mm
- High pressure grinding rolls
- Mill feed <4 mm
- Emergency stockpiles
- 2 x ball mills (14 MW + 6 MW)

## Processing plant

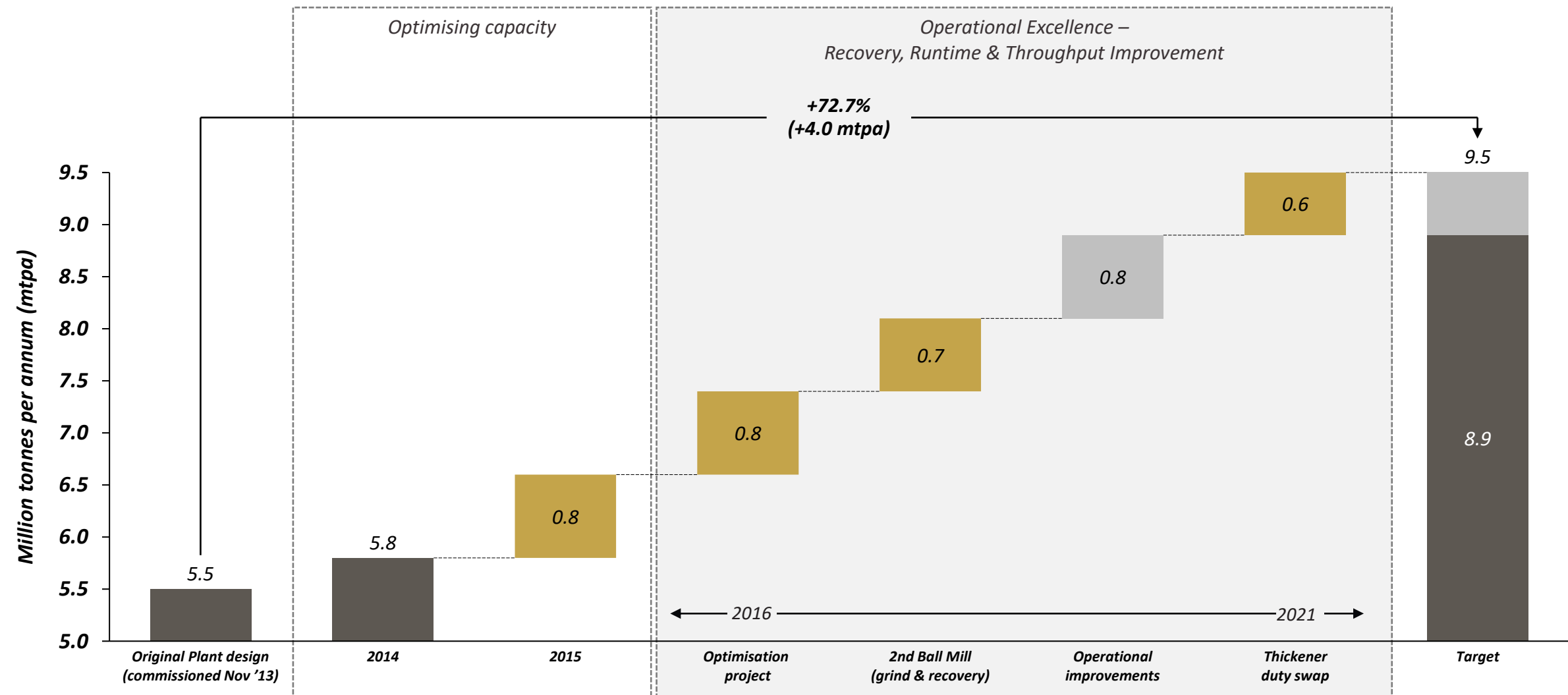
- 2 x thickeners
- 4 x leach tanks
- 6 x CIL tanks
- AARL split elution
- 2 x electrowinning cells
- TSF – downstream built

## Plant Flowsheet

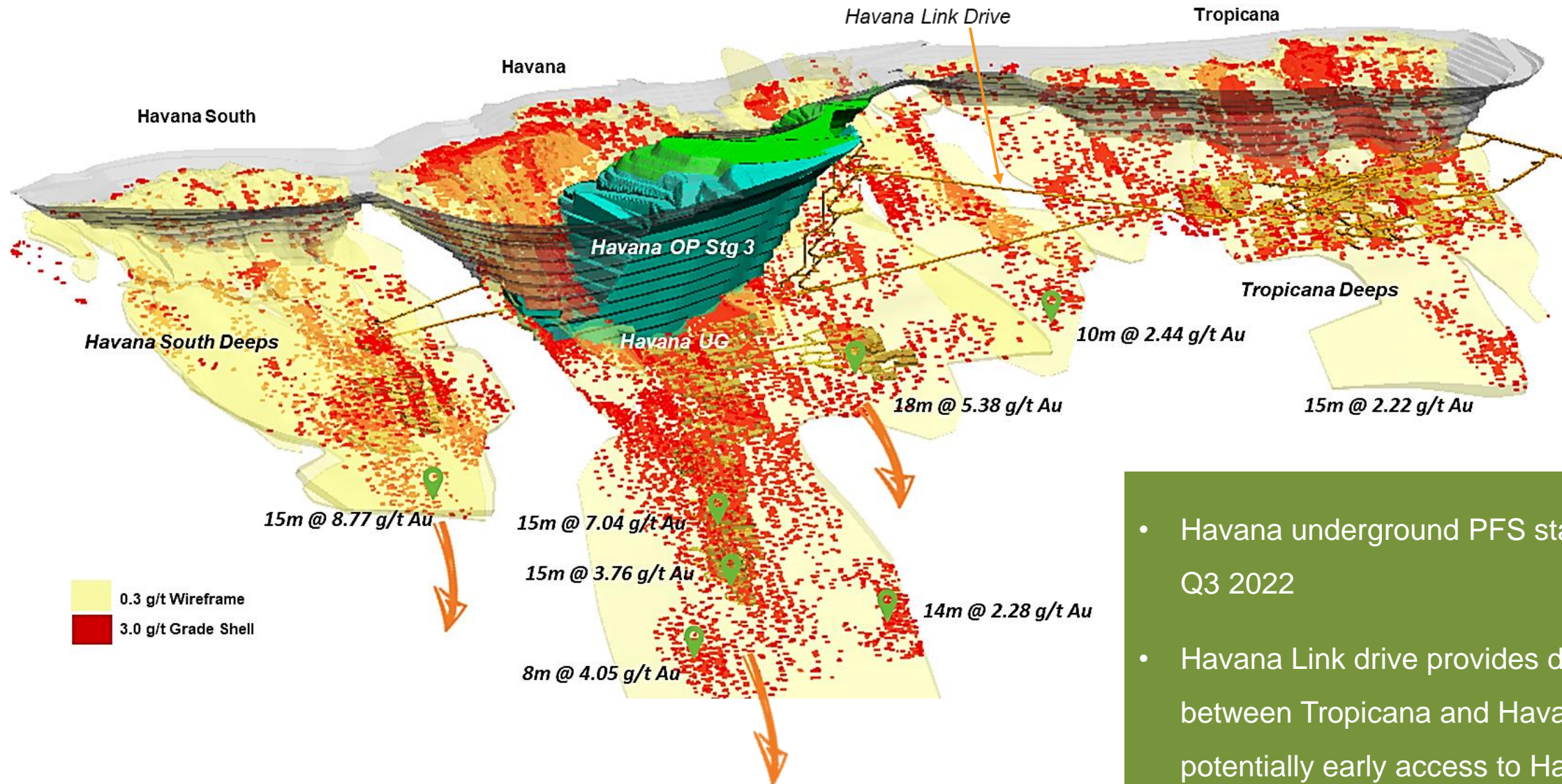




# TROPICANA MILL IMPROVEMENT JOURNEY



# INVESTING IN THE FUTURE - TROPICANA

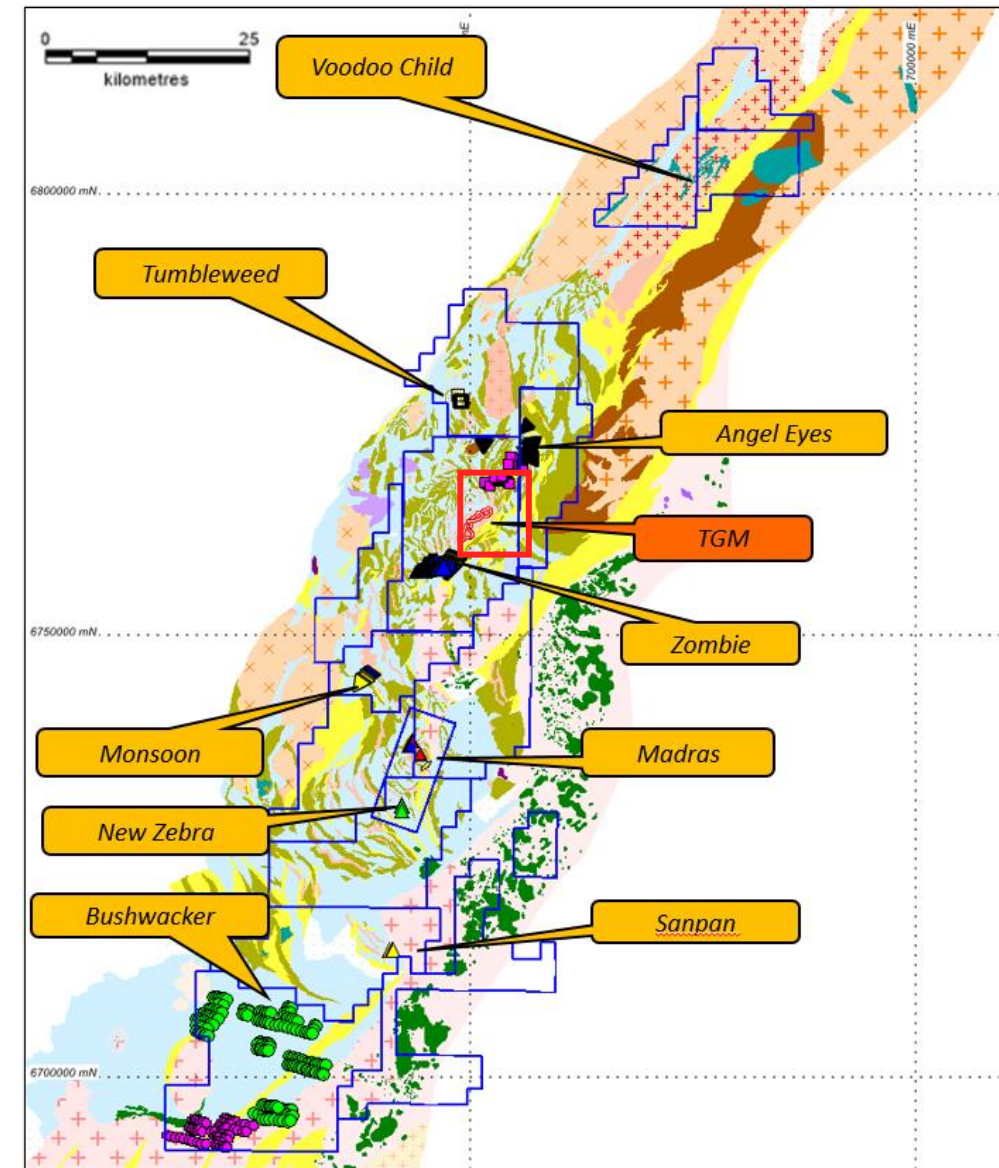
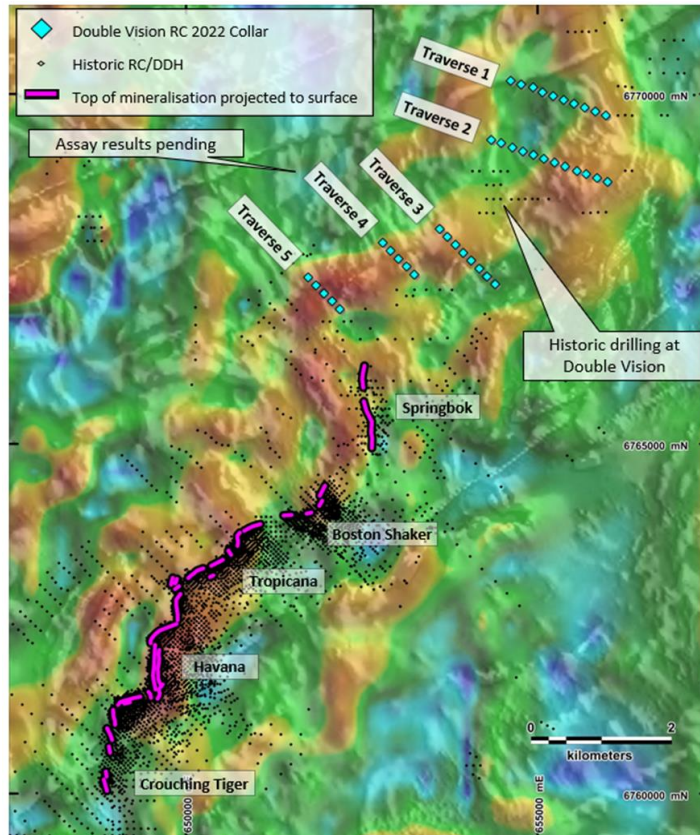


- Havana underground PFS started in Q3 2022
- Havana Link drive provides drill access between Tropicana and Havana and potentially early access to Havana UG



# REGIONAL EXPLORATION

- JV tenure spans ~70km north and south along belt
- Regional exploration strategy to focus on within 20km of the mill along trend north and south of the current operation
- Tenure under-explored compared to mature terrains



# FULL ASSET POTENTIAL PROCESS

