



Matador Mining Defines Diamond Drill Targets at Malachite Through Summer Field Work

Matador Mining Limited (ASX: MZZ / OTCQX: MZZMF / FSE: MA3) (“Matador” or the “Company”) is pleased to announce that it has defined several structurally controlled diamond drill targets with coincidental gold grain and gold and multi-element geochemical anomalies at Malachite; its new, large and previously untested exploration project on the Cape Ray Shear Zone (“CRSZ”) in Newfoundland, Canada. This follows comprehensive geological fieldwork completed in the first half of the 2022 summer season.

Highlights

- Covered over 22 kilometres of strike at Malachite and Grandys with extensive geological mapping and rock sampling, prospecting and till sampling delivering multiple priority drill-ready targets.
- Prospecting identifies extensive areas with outcropping sulphide and quartz veining, and hydrothermal alteration not previously identified in the historic data (rock chip assays pending).
- Follow-up extensional and infill surface sampling continues to demonstrate high gold grain values within the vast Malachite area (60 square kilometres).
- One of these gold grain samples returned 1,201 gold grains, 97% of which were pristine, reinforcing interpreted proximity to a gold source and delivering a high-priority walk-up drill target

The Malachite area is situated in the centre of the Company’s contiguous 120-kilometre-long CRSZ tenements, as shown on Figure 1. Malachite is located on a major structural bend along this multi-million-ounce corridor which also hosts Marathon Gold’s 5.1 Moz Au and the Company’s current 837 koz Au Mineral Resources. The area is considered geologically prospective with several large arrays of interpreted faults and shear zones splaying off the CRSZ and wrapping around multiple intrusions and other prospective host rocks.

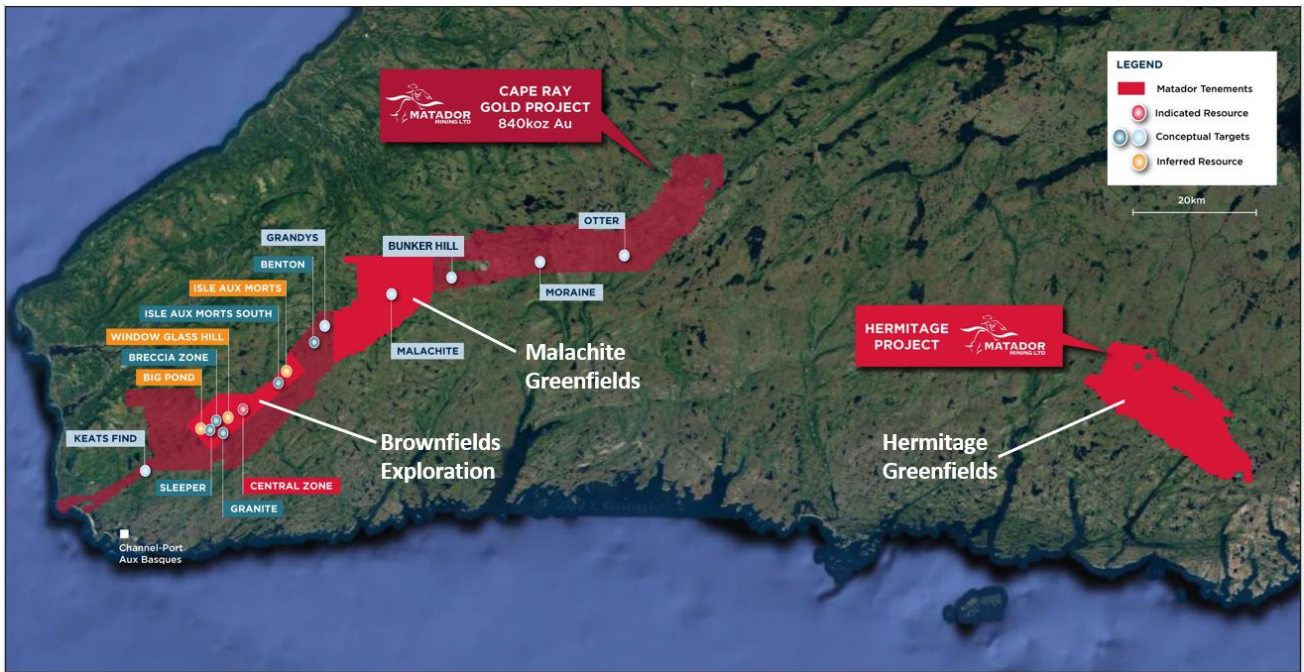


Figure 1: Matador Mining Newfoundland, Canada tenement package



Figure 2: A) Malachite field mapping B) New sulphide bearing quartz vein C) Sulphide bearing quartz boulder from within the CRSZ D) Vein located in the footwall of the CRSZ (assays pending for all)

Matador's Managing Director and Chief Executive Officer, Sam Pazuki Comments

"The follow-up activities at Malachite and ensuing results have increased our confidence in discovering potentially large gold systems within our extensive tenement package along the Cape Ray Shear. The Malachite area is vast, remote and largely underexplored and during the summer months in Canada, our exploration team covered a large area with comprehensive field work."

"The decision to pivot to a Greenfields exploration focus was made in May 2022, and by June 2022 the team had mobilised swiftly and safely to carry-out the necessary geological mapping, prospecting, sampling and testing to identify specific areas to direct diamond drilling. The results of the field work from this exploration campaign have exceeded my expectations. It has confirmed the structural complexity of the area including confirmation of shearing coincident with a major structural bend of a known multi-million-ounce gold structure, and identification of several cross-cutting structures splaying off this same structure. Essentially, it presents the right geological setting for major gold discoveries. As we wait for additional assays, the team has been preparing to commence inaugural drilling at Malachite which is expected to start in the coming weeks."

Field Mapping, Prospecting and Rock Chip Sampling at Malachite

A substantial geological mapping, prospecting and rock chip sampling program (Figure 3) was conducted during the first half of the 2022 summer field season across the Malachite area to provide more detailed geological context for the regional anomalies generated during the 2021 reconnaissance till and gold grain sampling program¹. The mapping and prospecting covered 22 kilometres of strike from Grandys in the southwest to Malachite in the northeast, including historically unexplored stratigraphic units to the north and south of the main structure.

The results of the work completed have increased the Company's understanding of the geology structures and potentially gold-bearing second and third-order faults splaying off a major structural bend along the multi-million-ounce CRSZ. This work has led to the development of the most comprehensive and detailed geological interpretation of the area to date (Figure 4) reinforcing the Company's confidence in the Malachite area.

¹ ASX Announcement 8 June 2022

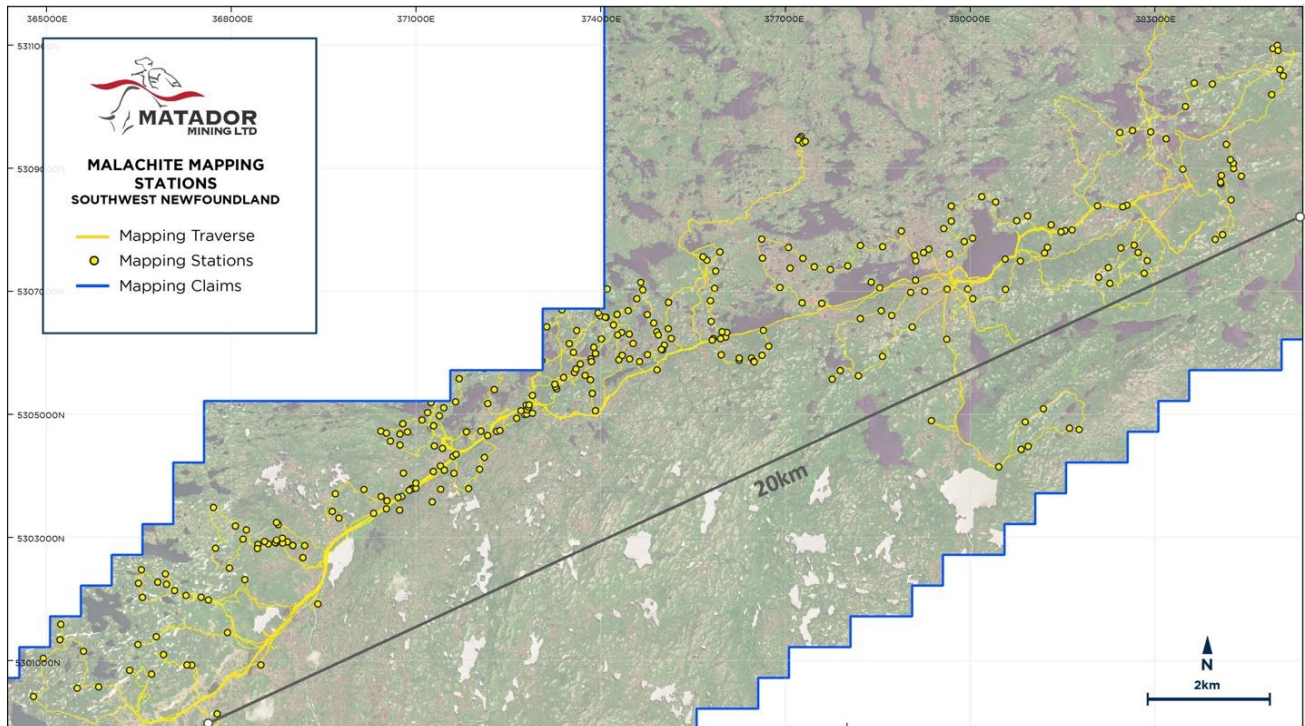


Figure 3: Malachite mapping traverses and prospecting localities

The Malachite area is vastly underexplored. During the 2022 mapping program, the field team has delineated large areas hosting extensive outcropping quartz and sulphide veining that were not reported in any historic data. Abundant quartz veins with significant sulphide and wall rock alteration (Figure 2) have been rock chip sampled, with assays pending. These prospecting discoveries represent new hydrothermal systems at surface that have previously never been mapped or sampled, many of which coincide with gold grain and till geochemistry anomalies identified in the 2021 reconnaissance till sampling program².

² ASX Announcement 8 June 2022

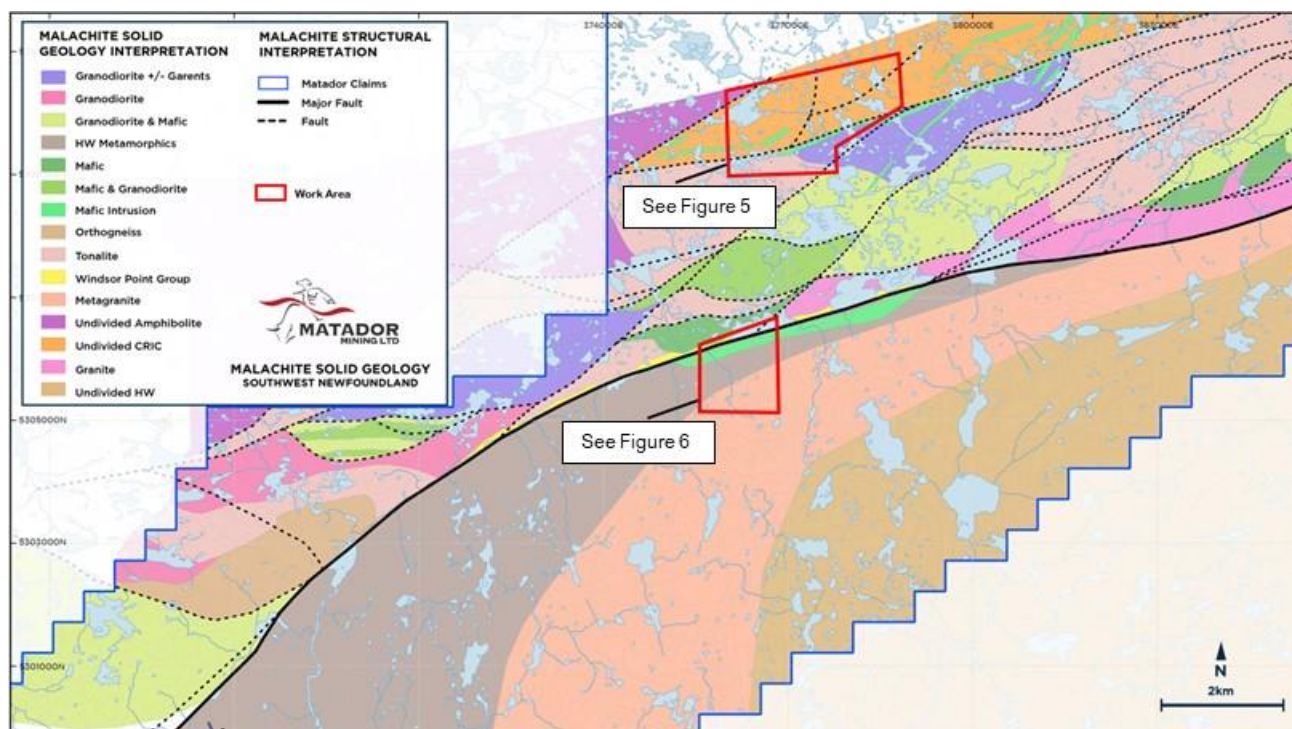


Figure 4: Updated solid geology interpretation based on integration of 2022 mapping constraints with Matador’s high resolution 2021 heli-magnetic dataset

Till sampling and gold grain analysis from heavy mineral concentrates

Two of the highest priority targets identified in the 2021 regional till sampling program at Malachite have been followed up with infill and extensional till sampling during the first half of the 2022 summer field season (Figure 4). This work has delivered approximately 55 gold grain samples and 350 conventional till multi-element geochemistry samples to-date (field sampling work is ongoing on other high priority targets at Malachite – see Figure 7).

Results received to date from this year’s sampling program have delivered the highest gold grain sample ever recorded from the Malachite area, with a peak count of 1,201 gold grains (MT002553), of which 97% of the grains were characterised as “pristine” meaning it has not been transported far from a source of mineralisation. This result is a calculated equivalent of 1,928 ppb Au (1.9 g/t Au). This sample was taken 15 metres to the south of the previous peak result of 716 gold grains³, reinforcing the interpreted proximity to gold source, and providing further impetus for planned diamond drill testing of this target. The work done in this area has extended the previous reconnaissance grid a further 850 metres to the north over a strike length of 2.5 kilometres, returning anomalous gold values (with coincident silver, arsenic, tellurium and tin pathfinder geochemistry anomalies) open to both the northeast and south west over an area of more than three square kilometres (Figure 5).

³ ASX Announcement 20 April 2022

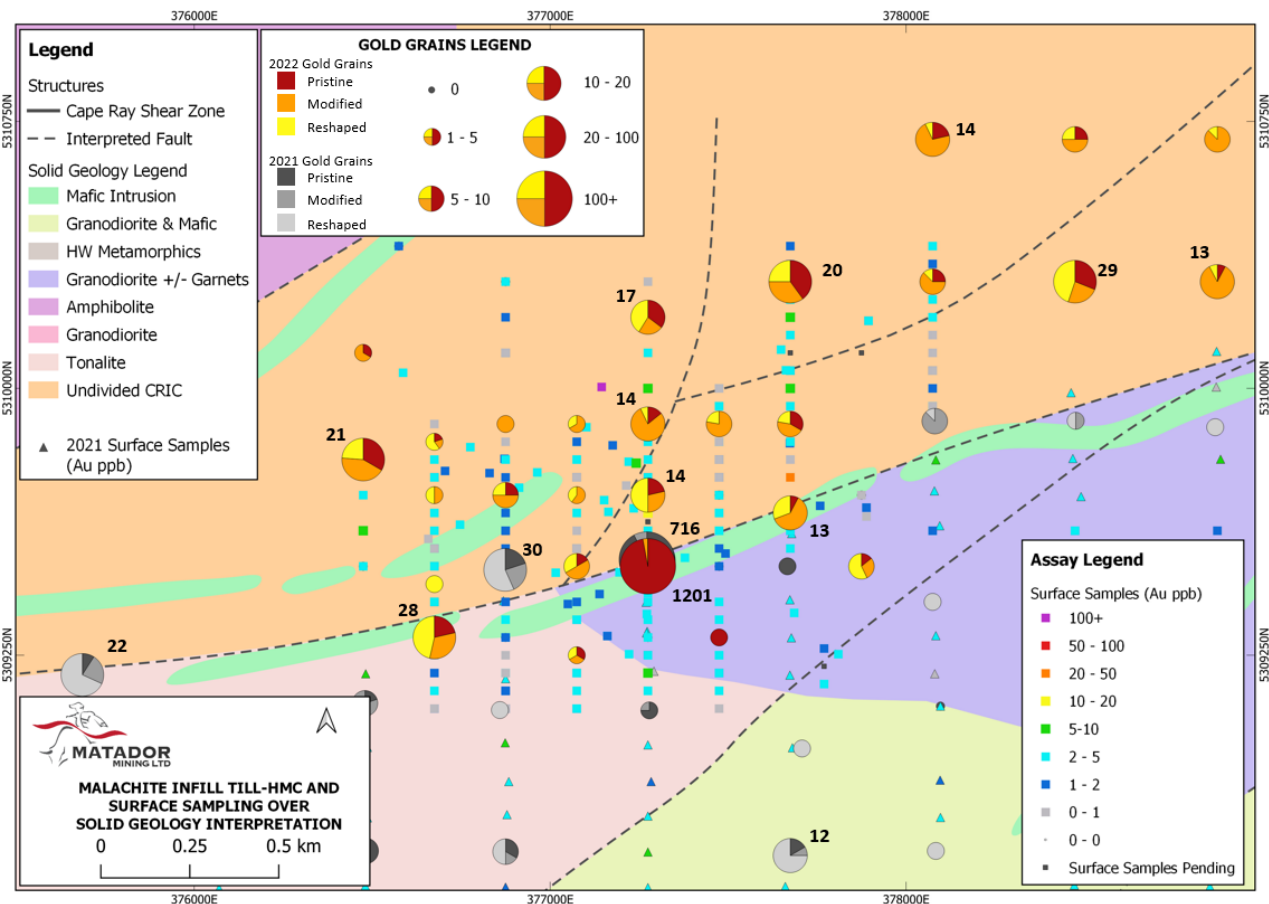


Figure 5: Peak gold grain anomalies (>10 grains) and till geochemistry (Au ppb anomalies) from the 2022 infill and extension sampling program superimposed on the updated solid geology interpretation and previously reported 2021 regional gold grain and till results⁴ (see Figure 4 for sample grid location)

On the southern side of the CRSZ at Malachite, sampling has returned a peak gold grain count of 136 gold grains (MT002692), 75 of which were pristine (Figure 6). This result is a calculated equivalent of 174 ppb Au. This sample was taken 175 metres to the east of the previous standout result of 366 gold grains⁵, proving up this area as a priority diamond drilling target. The prospectivity of this area is also supported by significant gold (plus silver, arsenic, bismuth, antimony and tin pathfinder element) anomalism from the infill and extension till geochemistry which returned results of 690 ppb Au (MT002633), 390 ppb Au (MT002727), and 388 ppb Au (MT002719) further highlighting the gold mineralisation potential of rock units south of the CRSZ, which were historically considered to be unmineralised. This program has extended the 2021 reconnaissance sampling grid a further 1.15 kilometres to the south, with an 800-metre strike section returning anomalous values >10 gold grains (Figure 6).

⁴ ASX Announcements 20 April 2022 and 8 June 2022

⁵ ASX Announcement 8 June 2022

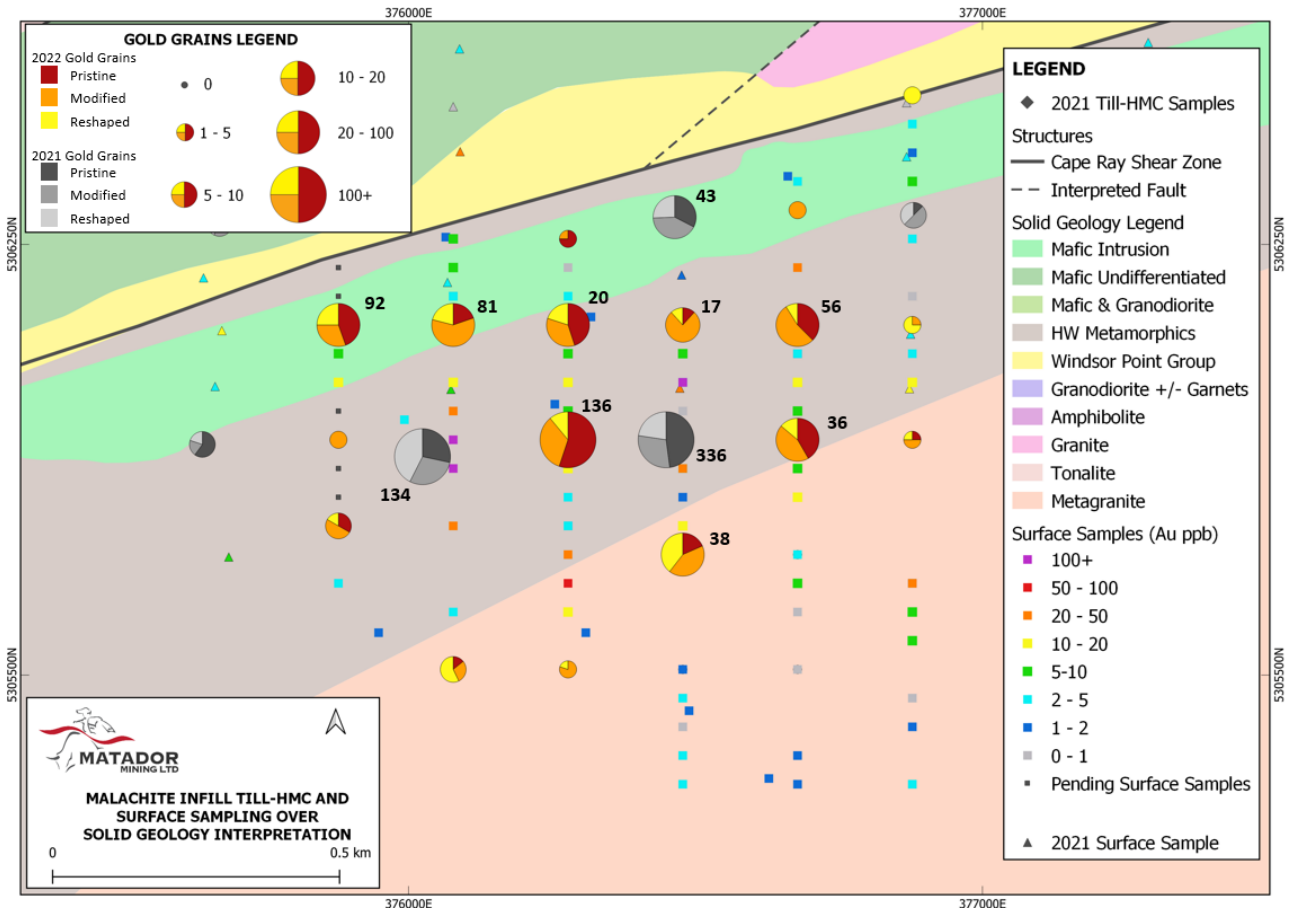


Figure 6: Peak gold grain anomalies (>10 grains) and till geochemistry (Au ppb anomalies) from the 2022 infill and extension sampling program superimposed on the updated solid geology interpretation and previously reported 2021 regional gold grain and till results⁶ (see Figure 4 Error! Reference source not found. for sample grid location)

Mapping, prospecting and surface sampling is ongoing across multiple priority target areas for the remainder of the 2022 field season (see Figure 7), with a diamond drilling program planned to begin at Malachite in the coming weeks.

⁶ ASX Announcements 20 April 2022 and 8 June 2022



Figure 7: Exploration work planned for the remainder of 2022

– ENDS –

This announcement has been authorised for release by the Company’s Board of Directors.

To learn more about the Company, please visit www.matadormining.com.au, or contact:

Sam Pazuki – Managing Director & CEO

Phone: +61 8 6117 0478

Email: info@matadormining.com.au

Twitter : @MatadorCEO

Alex Cowie – Investor Relations

Phone: +61 412 952 610

Email: alexc@nwrcommunications.com.au

About the Company

Matador Mining Limited (**ASX: MZZ / OTCQX: MZZMF / FSE: MA3**) is an exploration company focused on making gold discoveries in Newfoundland, Canada. The Company is one of only four gold companies with a defined gold Mineral Resource, currently 837,000 ounces grading 2 grams per tonne. Matador is well positioned with an extensive land package comprising 120-kilometres of continuous strike along the under-explored, multi-million-ounce Cape Ray Shear, a prolific gold structure in Newfoundland that currently hosts several major mineral deposits. Additionally, the Company holds 27-kilometres of continuous strike at the Hermitage prospect which is located on the highly prospective Hermitage Flexure.

Matador acknowledges the financial support of the Junior Exploration Assistance Program, Department of Industry, Energy and Technology, Provincial Government of Newfoundland and Labrador, Canada.

Reference to Previous ASX Announcements

In relation to the results of the Scoping Study which were announced on 6 May 2020, Matador confirms that all material assumptions underpinning the production target and forecast financial information included in that announcement continue to apply and have not materially changed.

In relation to the Mineral Resource estimate announced on 6 May 2020, the Company confirms that all material assumptions and technical parameters underpinning the estimates in that announcement continue to apply and have not materially changed. The Company confirms that the form and context in which the Competent Person's findings are presented have not been materially modified from the original market announcement.

In relation to the exploration results included in this announcement, the dates of which are referenced, the Company confirms that it is not aware of any new information or data that materially affects the information included in those announcements. The Company confirms that the form and context in which the Competent Person's findings are presented have not been materially modified from the original market announcements.

Competent Person's Statement

The information contained in this announcement that relates to exploration results is based upon information compiled by Mr. Warren Potma, who is an employee of Matador Mining Limited in the position of Chief Geologist. Mr. Potma is a Member of the AIG and has sufficient experience which is relevant to the style of mineralisation and type of deposit under consideration and to the activity which he is undertaking to qualify as a Competent Person as defined in the JORC Code 2012. Mr. Potma consents to the inclusion in the announcement of the matters based upon the information in the form and context in which it appears.

Appendix 1 JORC Code 2012 Table 1 Reporting

Section 1. Sampling Techniques and Data

Criteria	Explanation	Commentary
Sampling Techniques	Nature and quality of sampling (e.g., cut channels, random chips, or specific specialised industry standard measurement tools appropriate to the minerals under investigation, such as down hole gamma sondes, or handheld XRF instruments, etc). These examples should not be taken as limiting the broad meaning of sampling.	<p>Till Samples discussed in this release:</p> <p>Till samples were collected on a nominal 200 x 50 metre grid pattern using a hand auger tool. Sample weights ranged from 750-1000 grams depending on the abundance of sample material. Samples were logged & bagged in the field and presented to the SGS MSPU for drying and sieving to retain the fine fraction passing through a 63-micron screen. The entire fine fraction was then shipped by SGS to their lab in Burnaby for analysis.</p> <p>Gold Grain Analysis Samples discussed in this release:</p> <p>Gold grain till samples were collected on a 200 x 200 metre grid spanning the target area. A 12kg sample was collected from C horizon (till) material from a hand dug pit and passed through an 8 mm screen into a bucket. 11kg of till (weighed in the field to ensure consistent sample mass) was routinely collected, and 1kg of clasts >8mm were added back into the till sample. The entire sample was then shipped to ODM for analysis.</p>
	Aspects of the determination of mineralisation that are Material to the Public Report.	All till samples are routinely assayed for gold and 49 element partial digest geochemistry using SGS Laboratories GE_ARMV25 analysis. 25g aqua regia digest with ICP-MS finish (1 - 500 ppb Au).
Drilling Techniques	Drill type (e.g., core, reverse circulation, open-hole hammer, rotary air blast, auger, Bangka, sonic, etc) and details (e.g., core diameter, triple or standard tube, depth of diamond tails, face-sampling bit or other type, whether core is oriented and if so, by what method, etc).	<p>The 1kg till samples are collected at each site using a soil auger.</p> <p>12kg bulk till samples for gold grain analysis were collected from sample pits dug by hand with shovels.</p>
Drill Sample Recovery	Method of recording and assessing core and chip sample recoveries and results assessed.	Sample weights were recorded for all 1kg auger till samples, and all 12kg till gold grain analysis samples.
	<p>Measures taken to maximise sample recovery and ensure representative nature of the samples.</p> <p>Whether a relationship exists between sample recovery and grade and whether sample bias may have occurred due to preferential loss/gain of fine/coarse material.</p>	N/A for 1kg auger till and 12kg gold grain samples.

Criteria	Explanation	Commentary
Logging	Whether core and chip samples have been geologically and geotechnically logged to a level of detail to support appropriate Mineral Resource estimation, mining studies and metallurgical studies.	1kg auger till, and 12kg till gold grain analysis samples are not used for Mineral Resource estimation, however, all samples are logged for geological attributes.
	Whether logging is qualitative or quantitative in nature. Core (or costean, channel, etc) photography.	Logging of the till samples is qualitative and records horizon depths, sample depth, silt and sand fractions, clast concentration, oxidation, and weight. Most tills are digitally photographed in the field.
	The total length and percentage of the relevant intersections logged.	All till samples are logged in full.
Sub-Sampling techniques and sample preparation	If core, whether cut or sawn and whether quarter, half or all core taken.	Not applicable for hand auger till samples.
	If non-core, whether riffled, tube sampled, rotary split, etc and whether sampled wet or dry.	1kg auger till samples were collected wet and were not sub-sampled or split in the field. The entire sample was dried at the MSPU in Grand Falls, sieved at 63 microns with the entire fine fraction retained for analysis. The 12kg gold grain analysis samples are collected damp and passed through an 8 mm screen into a bucket. 11kg of till (weighed in the field to ensure consistent sample mass) was routinely collected, and 1kg of clasts >8mm were added back into the till sample. The sample is split at the lab with 300g stored. The sample is further table split with +2mm clasts stored and wet sieved at 2mm for analysis with the light fraction being stored.
	For all sample types, the nature, quality and appropriateness of the sample preparation technique.	Till Samples discussed in this release: Till samples were collected on a nominal 200 x 50 metre grid pattern using a hand auger tool. Sample weights ranged from 750-1000 grams depending on the abundance of sample material. Samples were logged & bagged in the field and were sent to the SGS sample preparation facility in Grand Falls for drying and sieving to retain the fine fraction passing through a 63-micron screen. The entire fine fraction was then shipped by SGS to their lab in Burnaby for analysis. Gold Grain Analysis Samples discussed in this release: Gold grain (heavy) till samples were collected on a 200 x 200 metre grid spanning the target area. A 12 kg sample was collected from C horizon (till) material and rubbed through an 8 mm screen into a bucket. 11kg of till is collected, and 1kg of clasts >8mm are added back into the till sample. The entire sample was then shipped to ODM for analysis.
	Quality control procedures adopted for all sub-sampling stages to maximise representativity of samples.	1kg till samples are dried at the lab and sieved to 63 microns with the fine fraction submitted for analysis. 100% of the fine fraction of the till sample is submitted for analysis. 12kg Gold Grain Analysis samples are table split and wet sieved at 2mm. Clasts >2mm are stored with the fine fraction undergoing a -2mm table separation. The fine fraction is then stored, and the heavy fraction (table concentrate) undergoes analysis, where gold grains are handpicked from the heavy fraction, counted, weighed and classified (as pristine, modified or reshaped)
	Measures taken to ensure that the sampling is representative of the in-situ material collected, including for instance results for field duplicate/second-half sampling.	Field duplicates were taken approximately every 30 samples. Field duplicates of the 12kg gold grain analysis samples were obtained by digging a second sample pit within 1 metre of the original sample pit

Criteria	Explanation	Commentary																							
Quality of assay data and laboratory tests	The nature, quality and appropriateness of the assaying and laboratory procedures used and whether the technique is considered partial or total.	Till samples are analysed for Au plus 36 elements by aqua-regia digest ICP-MS finish at SGS, Burnaby, British Columbia, Canada. This is a partial digest method for gold and considered appropriate for surficial geochemical testing for gold and associated pathfinder element analysis. Gold Grain analysis samples undergo a micropan, gold grain count and metallic mineral abundance estimate. The gold grains are further measured, classified and have their assay values calculated based on a 250:1 concentration factor.																							
	For geophysical tools, spectrometers, handheld XRF instruments, etc, the parameters used in determining the analysis including instrument make and model, reading times, calibrations factors applied and their derivation, etc.	No new geophysical surveys are reported in this release.																							
	Nature of quality control procedures adopted (e.g., standards, blanks, duplicates, external laboratory checks) and whether acceptable levels of accuracy (e.g., lack of bias) and precision have been established.	Certified reference material (CRM) samples sourced from OREAS are inserted approximately every 25 samples <table border="1" data-bbox="762 779 1246 1151"> <thead> <tr> <th>Standard</th> <th>Expected Au_ppm</th> <th>Expected Ag_ppm</th> </tr> </thead> <tbody> <tr> <td>OREAS 230</td> <td>0.3148</td> <td></td> </tr> <tr> <td>OREAS 240</td> <td>5.5100</td> <td>1.3500</td> </tr> <tr> <td>OREAS 239</td> <td>3.5500</td> <td>0.2440</td> </tr> <tr> <td>OREAS 242</td> <td>8.6700</td> <td>2.0600</td> </tr> <tr> <td>OREAS 231</td> <td>0.5420</td> <td>0.1770</td> </tr> <tr> <td>OREAS 211</td> <td>0.7680</td> <td>0.2140</td> </tr> <tr> <td>OREAS 47</td> <td>0.1795</td> <td></td> </tr> </tbody> </table>	Standard	Expected Au_ppm	Expected Ag_ppm	OREAS 230	0.3148		OREAS 240	5.5100	1.3500	OREAS 239	3.5500	0.2440	OREAS 242	8.6700	2.0600	OREAS 231	0.5420	0.1770	OREAS 211	0.7680	0.2140	OREAS 47	0.1795
Standard	Expected Au_ppm	Expected Ag_ppm																							
OREAS 230	0.3148																								
OREAS 240	5.5100	1.3500																							
OREAS 239	3.5500	0.2440																							
OREAS 242	8.6700	2.0600																							
OREAS 231	0.5420	0.1770																							
OREAS 211	0.7680	0.2140																							
OREAS 47	0.1795																								
Verification of sampling and assaying	The verification of significant intersections by either independent or alternative company personnel.	All assays are reviewed by Matador Mining. All significant results are checked by senior geologist and the Competent Person.																							
	The use of twinned holes.	N/A																							
	Documentation of primary data, data entry procedures, data verification, data storage (physical and electronic) protocols.	All till sample data collection and logging is completed on digital logging templates with built-in validation. Logging spreadsheets are uploaded and validated in a central database (Datashed). All original logging spreadsheets are also kept in archive.																							
	Discuss any adjustment to assay data.	No assay data was adjusted, and no averaging was employed.																							
Location of data points	Accuracy and quality of surveys used to locate drill holes (collar and down-hole surveys), trenches, mine workings and other locations used in Mineral Resource estimation.	Till sample sites are located using handheld GPS with 3-5m accuracy.																							
	Specification of the grid system used	Till sample sites are recorded in UTM NAD 83 Zone 21N.																							
	Quality and adequacy of topographic control	SRTM (satellite) DEM data provides approximately 5m topographic elevation precision across the entire project. A significantly more detailed Lidar dataset exists covering the area between Big Pond and Malachite (inclusive).																							
Data spacing and distribution	Data spacing for reporting of Exploration Results.	Sample spacing for the infill hand auger till program was approximately 200 x 50 metres. Sample spacing for the infill 12kg gold grain analysis samples was approximately 200 x 200 metres.																							

Criteria	Explanation	Commentary
Data spacing and distribution	Whether the data spacing, and distribution is sufficient to establish the degree of geological and grade continuity appropriate for the Mineral Resource and Ore Reserve estimation procedure(s) and classifications applied.	N/A 1kg auger and 12kg gold grain analysis till data are not used for the purposes of Mineral Resource estimation.
	Whether sample compositing has been applied.	N/A - for hand auger samples
Orientation of data in relation to geological structure	Whether the orientation of sampling achieves unbiased sampling of possible structures and the extent to which this is known, considering the deposit type.	N/A – for hand auger samples
	If the relationship between the drilling orientation and the orientation of key mineralised structures is considered to have introduced a sampling bias, this should be assessed and reported if material.	N/A – for hand auger samples.
Sample Security	The measures taken to ensure sample security.	N/A – for hand auger samples
Audits or reviews	The results of any audits or reviews of sampling techniques and data.	All QAQC data is reviewed to ensure quality of assays; batches containing standards that report greater than 2 standard deviations from expected values are re-assayed.

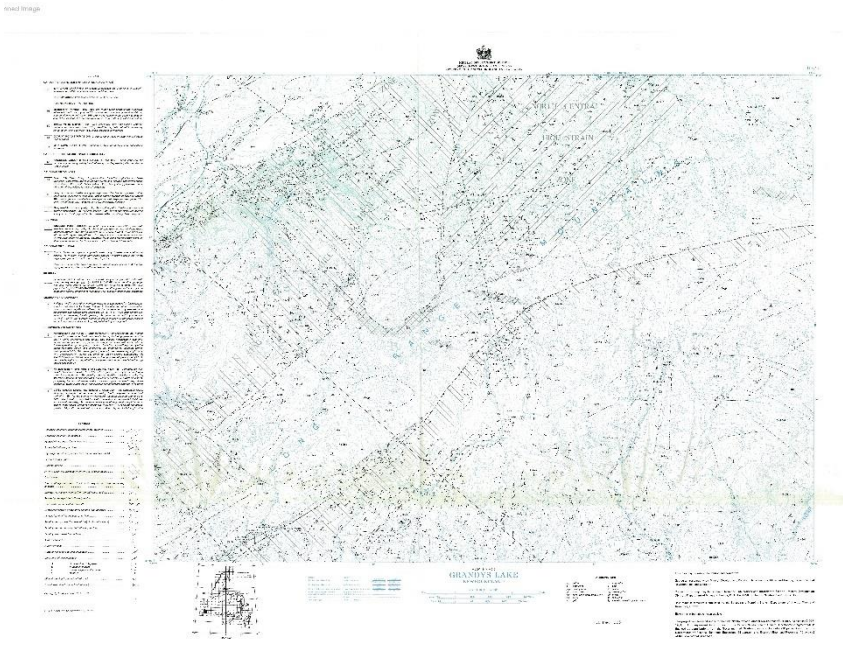
Section 2 Reporting of Exploration Results

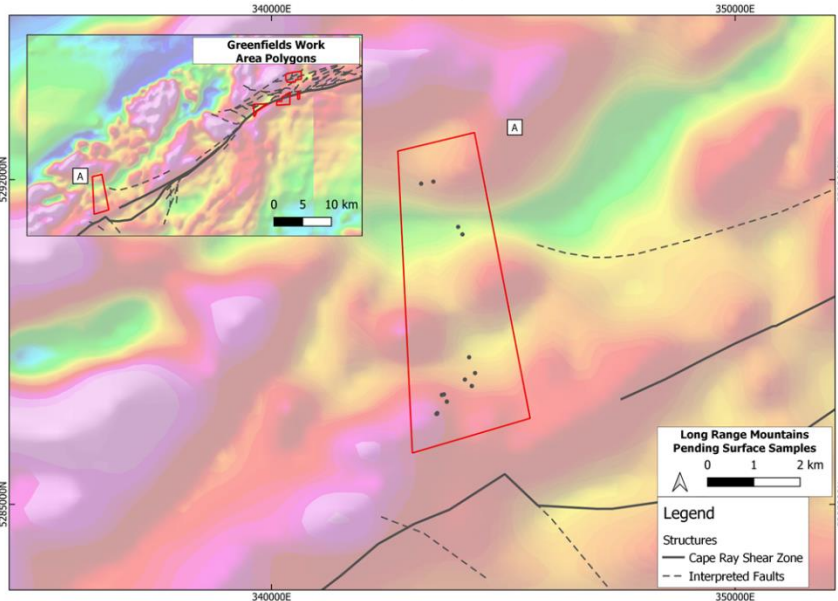
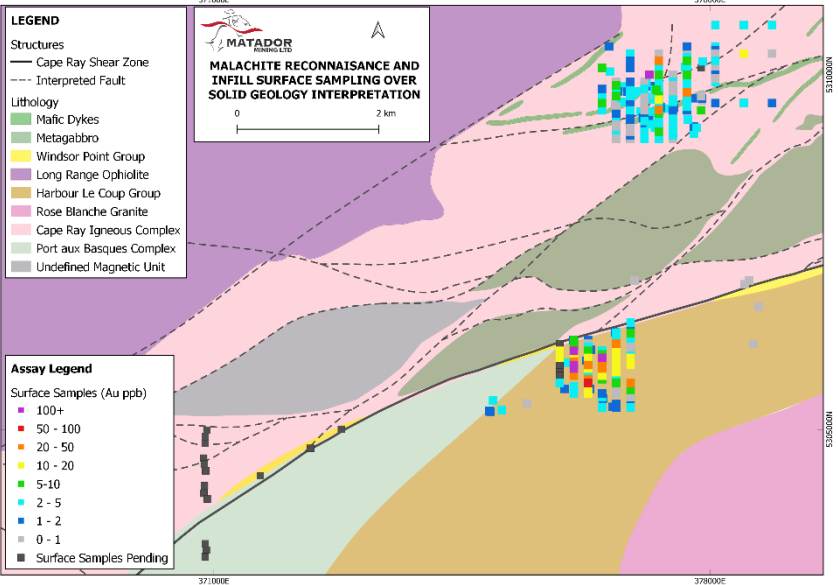
(Criteria listed in the preceding section also apply to this section.)

Criteria	JORC Code explanation	Commentary																																																																																																																																																																
Mineral tenement and land tenure status	Type, reference name/number, location and ownership including agreements or material issues with third parties such as joint ventures, partnerships, overriding royalties, native title interests, historical sites, wilderness or national park and environmental settings.	Matador owns 100% of all tenements on the Cape Ray Gold Project, which is located approximately 20km northeast of Port aux Basques, and 100% of all tenements on the Hermitage Project located approximately 50km North of Grey River, Newfoundland, Canada. All tenements are in good standing at the time of reporting.																																																																																																																																																																
	The security of the tenure held at the time of reporting along with any known impediments to obtaining a licence to operate in the area.																																																																																																																																																																	
		<table border="1"> <thead> <tr> <th>Licence No.</th> <th>Project</th> <th>No. of Claims</th> <th>Area (km²)</th> <th>Comments</th> </tr> </thead> <tbody> <tr> <td>025560M</td> <td>Cape Ray</td> <td>20</td> <td>5.00</td> <td></td> </tr> <tr> <td>025855M</td> <td>Cape Ray</td> <td>32</td> <td>8.00</td> <td>Royalty (d)</td> </tr> <tr> <td>025856M</td> <td>Cape Ray</td> <td>11</td> <td>2.75</td> <td>Royalty (d)</td> </tr> <tr> <td>025857M</td> <td>Cape Ray</td> <td>5</td> <td>1.25</td> <td>Royalty (d)</td> </tr> <tr> <td>025858M</td> <td>Cape Ray</td> <td>30</td> <td>7.50</td> <td>Royalty (d)</td> </tr> <tr> <td>026125M</td> <td>Cape Ray</td> <td>190</td> <td>47.50</td> <td></td> </tr> <tr> <td>030881M</td> <td>Cape Ray</td> <td>255</td> <td>63.75</td> <td></td> </tr> <tr> <td>030884M</td> <td>Cape Ray</td> <td>255</td> <td>63.75</td> <td></td> </tr> <tr> <td>030889M</td> <td>Cape Ray</td> <td>50</td> <td>12.50</td> <td></td> </tr> <tr> <td>030890M</td> <td>Cape Ray</td> <td>118</td> <td>29.50</td> <td></td> </tr> <tr> <td>030893M</td> <td>Cape Ray</td> <td>107</td> <td>26.75</td> <td></td> </tr> <tr> <td>030996M</td> <td>Cape Ray</td> <td>205</td> <td>51.25</td> <td></td> </tr> <tr> <td>030997M</td> <td>Cape Ray</td> <td>60</td> <td>15.00</td> <td>Royalty (d)</td> </tr> <tr> <td>031557M</td> <td>Cape Ray</td> <td>154</td> <td>38.5</td> <td></td> </tr> <tr> <td>031558M</td> <td>Cape Ray</td> <td>96</td> <td>24</td> <td></td> </tr> <tr> <td>031559M</td> <td>Cape Ray</td> <td>32</td> <td>8</td> <td></td> </tr> <tr> <td>031562M</td> <td>Cape Ray</td> <td>37</td> <td>9.25</td> <td></td> </tr> <tr> <td>032060M</td> <td>Cape Ray</td> <td>81</td> <td>20.25</td> <td>Royalties (a) (b) (c)</td> </tr> <tr> <td>032061M</td> <td>Cape Ray</td> <td>76</td> <td>19</td> <td>Royalties (a) (b) (c)</td> </tr> <tr> <td>032062M</td> <td>Cape Ray</td> <td>72</td> <td>18</td> <td>Royalties (a) (b) (c)</td> </tr> <tr> <td>032764M</td> <td>Hermitage</td> <td>256</td> <td>64</td> <td>Pegged 20 May 2021</td> </tr> <tr> <td>032770M</td> <td>Hermitage</td> <td>252</td> <td>63</td> <td>Pegged 20 May 2021</td> </tr> <tr> <td>032818M</td> <td>Hermitage</td> <td>95</td> <td>23.75</td> <td>Pegged 22 May 2021</td> </tr> <tr> <td>032940M</td> <td>Cape Ray</td> <td>255</td> <td>63.75</td> <td>Pegged 28 May 2021</td> </tr> <tr> <td>032941M</td> <td>Cape Ray</td> <td>256</td> <td>64</td> <td>Pegged 28 May 2021</td> </tr> <tr> <td>033080M</td> <td>Cape Ray</td> <td>190</td> <td>47.5</td> <td>Pegged 14 June 2021</td> </tr> <tr> <td>033083M</td> <td>Cape Ray</td> <td>256</td> <td>64</td> <td>Pegged 14 June 2021</td> </tr> <tr> <td>033085M</td> <td>Cape Ray</td> <td>256</td> <td>64</td> <td>Pegged 14 June 2021</td> </tr> <tr> <td>033110M</td> <td>Hermitage</td> <td>183</td> <td>45.75</td> <td>Pegged 18 June 2021</td> </tr> <tr> <td>034316M</td> <td>Cape Ray</td> <td>247</td> <td>61.79</td> <td>Pegged 10 March 2022</td> </tr> <tr> <td>Total</td> <td></td> <td>4132</td> <td>1033</td> <td></td> </tr> </tbody> </table>	Licence No.	Project	No. of Claims	Area (km ²)	Comments	025560M	Cape Ray	20	5.00		025855M	Cape Ray	32	8.00	Royalty (d)	025856M	Cape Ray	11	2.75	Royalty (d)	025857M	Cape Ray	5	1.25	Royalty (d)	025858M	Cape Ray	30	7.50	Royalty (d)	026125M	Cape Ray	190	47.50		030881M	Cape Ray	255	63.75		030884M	Cape Ray	255	63.75		030889M	Cape Ray	50	12.50		030890M	Cape Ray	118	29.50		030893M	Cape Ray	107	26.75		030996M	Cape Ray	205	51.25		030997M	Cape Ray	60	15.00	Royalty (d)	031557M	Cape Ray	154	38.5		031558M	Cape Ray	96	24		031559M	Cape Ray	32	8		031562M	Cape Ray	37	9.25		032060M	Cape Ray	81	20.25	Royalties (a) (b) (c)	032061M	Cape Ray	76	19	Royalties (a) (b) (c)	032062M	Cape Ray	72	18	Royalties (a) (b) (c)	032764M	Hermitage	256	64	Pegged 20 May 2021	032770M	Hermitage	252	63	Pegged 20 May 2021	032818M	Hermitage	95	23.75	Pegged 22 May 2021	032940M	Cape Ray	255	63.75	Pegged 28 May 2021	032941M	Cape Ray	256	64	Pegged 28 May 2021	033080M	Cape Ray	190	47.5	Pegged 14 June 2021	033083M	Cape Ray	256	64	Pegged 14 June 2021	033085M	Cape Ray	256	64	Pegged 14 June 2021	033110M	Hermitage	183	45.75	Pegged 18 June 2021	034316M	Cape Ray	247	61.79	Pegged 10 March 2022	Total		4132	1033	
Licence No.	Project	No. of Claims	Area (km ²)	Comments																																																																																																																																																														
025560M	Cape Ray	20	5.00																																																																																																																																																															
025855M	Cape Ray	32	8.00	Royalty (d)																																																																																																																																																														
025856M	Cape Ray	11	2.75	Royalty (d)																																																																																																																																																														
025857M	Cape Ray	5	1.25	Royalty (d)																																																																																																																																																														
025858M	Cape Ray	30	7.50	Royalty (d)																																																																																																																																																														
026125M	Cape Ray	190	47.50																																																																																																																																																															
030881M	Cape Ray	255	63.75																																																																																																																																																															
030884M	Cape Ray	255	63.75																																																																																																																																																															
030889M	Cape Ray	50	12.50																																																																																																																																																															
030890M	Cape Ray	118	29.50																																																																																																																																																															
030893M	Cape Ray	107	26.75																																																																																																																																																															
030996M	Cape Ray	205	51.25																																																																																																																																																															
030997M	Cape Ray	60	15.00	Royalty (d)																																																																																																																																																														
031557M	Cape Ray	154	38.5																																																																																																																																																															
031558M	Cape Ray	96	24																																																																																																																																																															
031559M	Cape Ray	32	8																																																																																																																																																															
031562M	Cape Ray	37	9.25																																																																																																																																																															
032060M	Cape Ray	81	20.25	Royalties (a) (b) (c)																																																																																																																																																														
032061M	Cape Ray	76	19	Royalties (a) (b) (c)																																																																																																																																																														
032062M	Cape Ray	72	18	Royalties (a) (b) (c)																																																																																																																																																														
032764M	Hermitage	256	64	Pegged 20 May 2021																																																																																																																																																														
032770M	Hermitage	252	63	Pegged 20 May 2021																																																																																																																																																														
032818M	Hermitage	95	23.75	Pegged 22 May 2021																																																																																																																																																														
032940M	Cape Ray	255	63.75	Pegged 28 May 2021																																																																																																																																																														
032941M	Cape Ray	256	64	Pegged 28 May 2021																																																																																																																																																														
033080M	Cape Ray	190	47.5	Pegged 14 June 2021																																																																																																																																																														
033083M	Cape Ray	256	64	Pegged 14 June 2021																																																																																																																																																														
033085M	Cape Ray	256	64	Pegged 14 June 2021																																																																																																																																																														
033110M	Hermitage	183	45.75	Pegged 18 June 2021																																																																																																																																																														
034316M	Cape Ray	247	61.79	Pegged 10 March 2022																																																																																																																																																														
Total		4132	1033																																																																																																																																																															
		The most proximate Aboriginal community to the Project site is the Miawpukek community in Bay d'Espoir, formerly known as "Conne River". It is approximately 230 kilometres to the east of the Project site. It is not known at this time if the Project site is proximate to any traditional territories, archaeological sites, lands or resources currently being used for traditional purposes by Indigenous Peoples. This information will be acquired as part of future environmental baseline studies.																																																																																																																																																																

Criteria	JORC Code explanation	Commentary
		<p>The Crown holds all surface rights in the Project area. None of the property or adjacent areas are encumbered in any way. The area is not in an environmentally or archeologically sensitive zone and there are no aboriginal land claims or entitlements in this region of the province.</p> <p>There has been no commercial production at the property as of the time of this report.</p> <p>Royalty Schedule legend:</p> <ul style="list-style-type: none"> a) 1.75% net smelter returns royalty (NSR) held by Alexander J. Turpin pursuant to the terms of an agreement dated June 25, 2002, as amended February 27, 2003 and April 11, 2008. The agreement between Alexander J. Turpin, Cornerstone Resources Inc. and Cornerstone Capital Resources Inc., of which 1.0% NSR can be repurchased for \$1,000,000 reducing such royalty to a 0.75% NSR. The agreement which royalty applies to Licences 14479M, 17072M, 9338M, 9339M and 9340M covering 229 claims, all as described in the foregoing agreements. b) 0.25% net smelter returns royalty (NSR) held by Cornerstone Capital Resources Inc. and Cornerstone Resources Inc. (collectively the “Royalty Holder”) pursuant to the terms of an agreement dated December 19, 2012, as amended June 26, 2013, between the Royalty Holders and Benton, which royalty applies to Licence 017072M, as described in the foregoing agreement. c) Sliding scale net smelter returns royalty (NSR) held by Tenacity Gold Mining Company Ltd. pursuant to the terms of an agreement dated October 7, 2013 with Benton Resources Inc.: <ul style="list-style-type: none"> i. 3% NSR when the quarterly average gold price is less than US\$2,000 per ounce (no buy-down right); ii. 4% NSR when the quarterly average gold price is equal to or greater than US\$2,000 per ounce but less than US\$3,000 per ounce with the right to buy-down the royalty from 4% to 3% for CAD\$500,000; and iii. 5% NSR when the quarterly average gold price is equal to or greater than US\$3,000 per ounce with the right to buy-down the royalty from 5% to 4% for CAD \$500,000; On Licences 7833M, 8273M, 9839M and 9939M as described in Schedule C of the foregoing agreement. d) 1.0% net smelter returns royalty (NSR) held by Benton Resources Inc pursuant to the terms of the sale agreement between Benton and Matador of which 0.5% NSR can be repurchased for \$1,000,000 reducing such royalty to a 0.5% NSR. The agreement which the royalty applies to covers Licences 025854M, 025855M, 025858M, 025856M and 025857M covering 131 claims.
Mineral tenement and land tenure status	The security of the tenure held at the time of reporting along with any known impediments to obtaining a licence to operate in the area.	The claims are in good standing Permits that will potentially be required for exploration work include a Surface Lease and Mineral Exploration Approval both issued by the Newfoundland Department of Natural Resources, Mineral Development Division. A Water Use Licence has been acquired from the Newfoundland Department of the Environment and Conservation, Water Resources Division, as well as a Certificate of Approval for Septic System for water use and disposal for project site facilities.
Exploration done by other parties	Acknowledgment and appraisal of exploration by other parties.	The Cape Ray Gold Deposit was initially discovered in 1977 by Rio Canada Exploration Limited (RioCanex). Since that period the area has been the subject of numerous academic and government geological studies, and exploration by various mining companies. Historical work is summarised in Matador Announcement 19 July 2018.
Geology	Deposit type, geological setting and style of mineralisation.	<p>The Cape Ray Project lies within the Cape Ray Fault Zone (CRFZ), which acts as a major structural boundary and hosts the Cape Ray Gold Deposits; zones 04, 41 and 51 (Central Zone), Window Glass, Big Pond and Isle Aux Morts.</p> <p>The CRFZ is approximately 100km long and up to 1km wide extending from Cape Ray in the southwest to Granite Lake to the Northeast.</p> <p>Areas along and adjacent to the southwest portion of the Cape Ray Fault Zone have been subdivided into three major geological domains. From northwest to southeast they include: The Cape Ray Igneous Complex (CRIC), the Windsor Point Group (WPG) and the Port aux Basques gneiss (PABG). These units are intruded by several pre-to late tectonic granitoid intrusions. The CRIC comprises mainly large mafic to ultramafic intrusive bodies that are intruded by granitoid rocks. Unconformably overlying the CRIC is the WPG, which consists of bimodal volcanics and volcanics with associated sedimentary rocks. The PABG is a series of high grade, kyanite-sillimanite-garnet, quartzofeldspathic pelitic and granitic rocks intercalated with hornblende schist or amphibolite.</p> <p>Hosted by the CRFZ are the Cape Ray Gold Deposits consisting of three main mineralised zones: the 04, the 41 and the 51 Zones, which have historically been referred to as the “Main Zone”. These occur as quartz veins and vein arrays along a 1.8 km segment of the fault zone at or near the tectonic boundary between the WPB and the PABG.</p> <p>The gold bearing quartz veins are typically located at or near the southeast limit of a sequence of highly deformed and brecciated graphitic schist. Other veins are present in the structural footwall and represent secondary lodes hosted by more competent lithologies.</p>

Criteria	JORC Code explanation	Commentary
		<p>Gold bearing quartz veins at the three locations are collectively known as the “A vein” and are typically located at (41 and 51 Zones) or near (04 Zone) the southeast limit of a sequence of highly deformed and brecciated graphitic schist of the WPG. The graphitic schists host the mineralisation and forms the footwall of the CRFZ. Graphitic schist is in fault contact with highly strained chloritic schists and quartz-sericite mylonites farther up in the hanging wall structural succession.</p> <p>The protolith of these mylonites is difficult to ascertain, but they appear to be partly or totally retrograded PABG lithologies. Other veins (C vein) are present in the structural footwall and represent secondary lodes hosted by more competent lithologies.</p> <p>In the CRGD area, a continuous sequence of banded, highly contorted, folded and locally brecciated graphitic schist with intercalations of chloritic and sericite-carbonate schists and banded mylonites constitutes the footwall and host of the mineralised A vein. The banded mylonites are characterized by cm-wide siderite-muscovite-quartz-rich bands within graphitic chlorite-quartz-muscovite schist. The mylonites are commonly spatially associated with local Au-mineralised quartz veins, vein breccias and stringer zones.</p> <p>The graphitic schist unit becomes strongly to moderately contorted and banded farther into the footwall of the fault zone, but cm- to m-wide graphitic and/or chloritic gouge is still common. The graphitic schist unit contains up to 60% quartz or quartz-carbonate veins. At least three mineralised quartz breccias veins or stockwork zones are present in the footwall of the 41 Zone and these are termed the C vein. The thickness of the graphitic-rich sequence ranges from 20-70m but averages 50-60 m in the CRGD area.</p> <p>The CRGD consists of electrum-sulphide mineralisation that occurs in boudinaged quartz veins within an auxiliary shear zone (the “Main Shear”) of the CRFZ. The boudinaged veins and associated mineralisation are hosted by chlorite-sericite and interlayered graphitic schists of the WPG (Table 7.1), with sulphides and associated electrum occurring as stringers, disseminations and locally discrete massive layers within the quartz bodies.</p> <p>The style of lode gold mineralisation in the CRGD has a number of characteristics in common with mesothermal gold deposits. The relationship of the different mineral zones with a major ductile fault zone, the nature of quartz veins, grade of metamorphism, and alteration style are all generally compatible with classic mesothermal lode gold deposits.</p>
Drill hole Information	<p>A summary of all information material to the understanding of the exploration results including a tabulation of the following information for all Material drill holes:</p> <ul style="list-style-type: none"> • easting and northing of the drill hole collar • elevation or RL (Reduced Level – elevation above sea level in metres) of the drill hole collar • dip and azimuth of the hole • down hole length and interception depth • hole length. <p>If the exclusion of this information is justified on the basis that the information is not Material and this exclusion does not detract from the understanding of the report, the Competent Person should clearly explain why this is the case.</p>	<p>As this data is considered early-stage exploration data, this surface sampling (which will not be used for Mineral Resource estimation), and till sample site details have not been tabulated, and are simply presented in map-form in the body of the announcement.</p>

Criteria	JORC Code explanation	Commentary
Data aggregation methods	<p>In reporting Exploration Results, weighting averaging techniques, maximum and/or minimum grade truncations (e.g., cutting of high grades) and cut-off grades are usually Material and should be stated.</p> <p>Where aggregate intercepts incorporate short lengths of high-grade results and longer lengths of low-grade results, the procedure used for such aggregation should be stated and some typical examples of such aggregations should be shown in detail.</p> <p>The assumptions used for any reporting of metal equivalent values should be clearly stated.</p>	<p>N/A</p>
Relationship between mineralisation widths and intercept lengths	<p>These relationships are particularly important in the reporting of Exploration Results.</p> <p>If the geometry of the mineralisation with respect to the drill hole angle is known, its nature should be reported.</p> <p>If it is not known and only the down hole lengths are reported, there should be a clear statement to this effect (e.g., 'down hole length, true width not known').</p>	<p>N/A</p>
Diagrams	<p>Appropriate maps and sections (with scales) and tabulations of intercepts should be included for any significant discovery being reported These should include, but not be limited to a plan view of drill hole collar locations and appropriate sectional views.</p>	<p>The solid geology interpretation presented in the body of the announcement was derived from the integration of the 1:50,000 scale government geological mapping (below) and Matador's detailed (30m line spaced) helimagnetics data (ASX announcement 11 August 2021):</p> <p>110/15 Chorlton, L. and Knight, I. 1983: Grandys Lake, Newfoundland. Map 82-055. Scale: 1:50 000. In Geology of the Grandys Lake area (110/15), Newfoundland. Government of Newfoundland and Labrador, Department of Mines and Energy, Mineral Development Division, Report 83-07, 135 pages, enclosures (map, cross-section, 2 tables, figure). GS# 0110/15/0151</p> 

Criteria	JORC Code explanation	Commentary
		<p>Locations of surface samples pending at the Long-Range Mountain Target:</p>  <p>The map displays the Long Range Mountains area with a red rectangle highlighting the target zone. An inset map titled 'Greenfields Work Area Polygons' shows a larger regional context. A legend in the bottom right corner identifies 'Structures' (Cape Ray Shear Zone) and 'Interpreted Faults'. A scale bar indicates 0, 1, and 2 km.</p>
<p>Balanced reporting</p>	<p>Where comprehensive reporting of all Exploration Results is not practicable, representative reporting of both low and high grades and/or widths should be practiced avoiding misleading reporting of Exploration Results.</p>	<p>All 12kg sample gold grain analysis results returned to date have been presented in map form in the body of the release. Gold and multi-element assays have also been received for some hand auger till samples (on 200 x 50 metre grid spacing). These till geochemistry data are primarily used to systematically map gold pathfinder geochemistry anomalies. Au ppb thematic results and pending assays are displayed below.</p>  <p>The map shows a detailed geological interpretation with various units color-coded. An 'Assay Legend' indicates gold concentrations in Au ppb: 100+ (red), 50-100 (orange), 20-50 (yellow), 10-20 (light green), 5-10 (green), 2-5 (cyan), 1-2 (blue), and 0-1 (grey). Black squares represent 'Surface Samples Pending'. A legend on the left lists lithology types: Mafic Dykes, Metagabbro, Windsor Point Group, Long Range Ophiolite, Harbour Le Coup Group, Rose Blanche Granite, Cape Ray Igneous Complex, Port aux Basques Complex, and Undefined Magnetic Unit. A scale bar shows 0 to 2 km.</p>

Criteria	JORC Code explanation	Commentary
Other substantive exploration data	Other exploration data, if meaningful and material, should be reported including (but not limited to): geological observations; geophysical survey results; geochemical survey results; bulk samples – size and method of treatment; metallurgical test results; bulk density, groundwater, geotechnical and rock characteristics; potential deleterious or contaminating substances.	N/A
Further work	<p>The nature and scale of planned further work (e.g., tests for lateral extensions or depth extensions or large-scale step-out drilling).</p> <p>Diagrams clearly highlighting the areas of possible extensions, including the main geological interpretations and future drilling areas, provided this information is not commercially sensitive.</p>	<p>Follow up mapping, infill and extensional till sampling, power auger drilling and eventually diamond drilling of high priority targets are critical next steps to assess and validate multiple high priority Greenfield targets. Future extensional and infill drilling is also planned in and around existing Mineral Resources.</p>