



Biloela Copper-Gold Project, Queensland

Bindi Metals Limited (ASX: BIM)

September
2022

Disclosure

DISCLAIMER

The information contained in this presentation or subsequently provided to any recipient of this presentation whether orally or in writing by or on behalf of Bindi Metals Limited (“Bindi”, “the Company”) or its respective employees, consultants or agents is provided to the recipients on the terms and conditions set out in this notice. This presentation contains forecasts and forward looking statements which are no guarantee of future performance and which involve certain risks.

Actual results and future outcomes will in all likelihood differ from those outlined herein. The presentation should not be construed as an offer or invitation to subscribe for or purchase securities in Bindi. Nor is it an inducement to make offer or an invitation with respect to said securities. Bindi makes no representation or warranty (either expressed or implied) as to the accuracy, reliability, or completeness of the presentation. Bindi and its directors, employees, agents, and consultants shall have no liability (including liability to any person by reason of negligence or negligent misstatement) for any statements, opinions, information or matters (express or implied) arising out of, contained in or derived from, or for any omissions from the presentation, except liability under statute that can not be excluded.

All exploration results in relation to the Biloela Project included in this presentation have been released in ASX announcements dated 8th September 2022 and 20th August 2022. The Company confirms that it is not aware of any new information or data that materially affects that information.

NOT INVESTMENT ADVICE

Each recipient of the Presentation should make its own enquiries and investigations regarding all information in this Presentation, including but not limited to assumptions, uncertainties, and contingencies which may affect future operations of the Company and the impact that different future outcomes might have on the Company. Information in this Presentation is not intended to be relied upon as advice to investors or potential investors and has been prepared without taking account at any person's individual investment objectives, financial situation or particular needs. Before making an investment decision, prospective investors should consider the appropriateness of the information having regard to their own investment objectives, financial situation, and needs and seek legal, accounting and taxation advice appropriateness to their jurisdiction. The Company is not licensed to provide financial product advice in respect of its securities.

FORWARD LOOKING INFORMATION

Forward looking statements are statement that are not historical facts. Words such as “expect(s)”, “feel(s)”, “believe(s)”, “will”, “may” and similar expressions are intended to identify looking forward statements. These statement include, but are not limited to statements regarding future production, resources or reserves, and exploration results. All of such statements are subject to certain risks and uncertainties, many of which are difficult to predict and generally beyond the control of the Company, that could cause actual results to differ materially from those expressed in, or implied or projected by, the forward-looking information and statements.

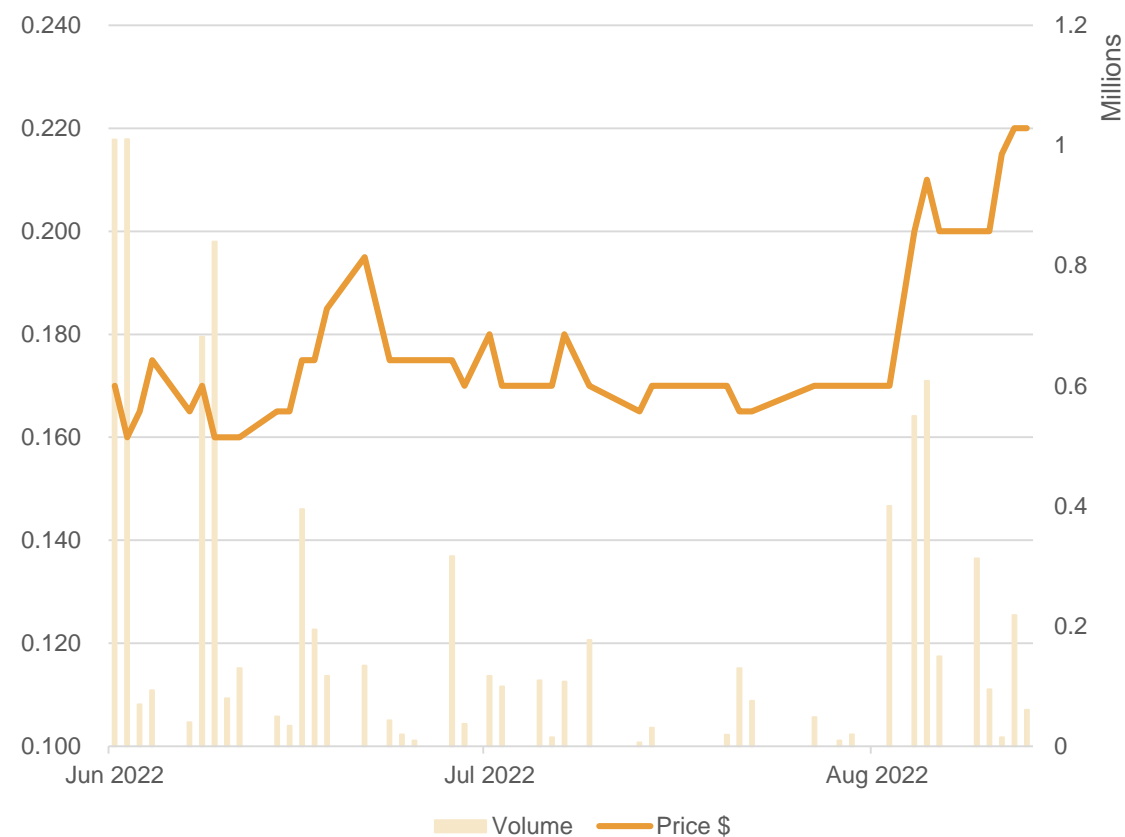
Investment Highlights



- Explorations on Biolela Cu-Au Project confirm potentially large Cu-Au system
 - Assayed soil and rock chip sampling confirm high grade outcropping mineralisation with up to
 - Flanagans: 13g/t Au and 5% Cu
 - Great Blackball: 10g/t Au and 12% Cu
 - Quartz Ridge: 3g/t Au
- Magnetism defines large scale anomaly 1.3km by 1.2km as main source of widespread Cu-Au mineralisation on the Project
- Drilling by Cannindah Resources, only 40 km to the East of the project has confirmed the region has world class resource potential (recent drilling at Cannindah includes 1022m @ 0.3% Cu, 0.2 g/t Au, 5.5 g/t Ag (0.48% CuEq) – ASX: CAE).

Capital Structure	
Shares on issue	31.35M
Options (30c, exp 27 Oct 24)	10.50M
Share Price (as at 9 Sep 22)	A\$0.22
Cash	A\$3.8M
Market capitalisation	A\$6.90M
Enterprise value	A\$3.1M
Board of Directors	
Eddie King	Non-Executive Chairman
Henry Renou	Executive Director
Cameron McLean	Non-Executive Director
Aida Tabakovic	Company Secretary

Corporate



Geology

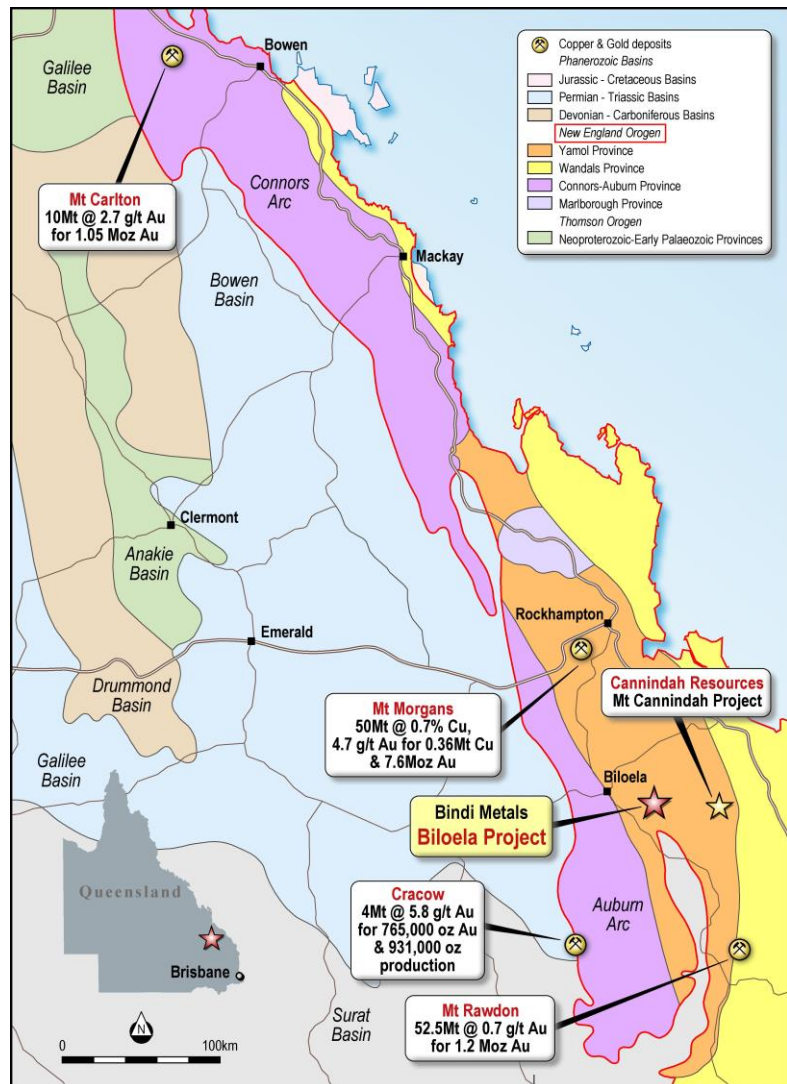


Figure 1: Biloela Project Location

- Located 93km southwest of the port of Gladstone in Central Queensland
- Close to major infrastructure with easy access from Biloela
- Major gold and copper mining area with project located in centre of multi million-ounce belts of New England Orogen
- Located 40 kms from Cannindah Resources Mt Cannindah Project and 100 kms of Evolution Mining's Mt Rawdon mine
- Project is located within the Late Devonian to early Carboniferous Andean-style New England Volcanic Arc
- Hosted in Permo-Triassic diorite and is the same age as Mt Rawdon and Mt Cannindah mineralisation
- Intrusion related gold copper deposit

Major Prospects

- Central magnetic-high anomaly 1.3 km by 1.2 km interpreted as main source of widespread copper-gold mineralization
- Flanagan's Main and East defined on a 1.5 km NW-SE structure with rock chips up to 13 g/t Au and 5% Cu and is open east and west
- Great Blackall Main, North and East defined along 1.8 km long magnetic anomaly with rock chips up 12 % Cu and 9 g/t Au and high grade historical drill intercepts of 2m @ 9.4 % Cu and 2.1 g/t Au in a wider zone of 12m @ 1.8% Cu and 0.45 g/t Au
- Quartz Ridge rock chips up to 12.2 g/t Au and 4.3 % Cu

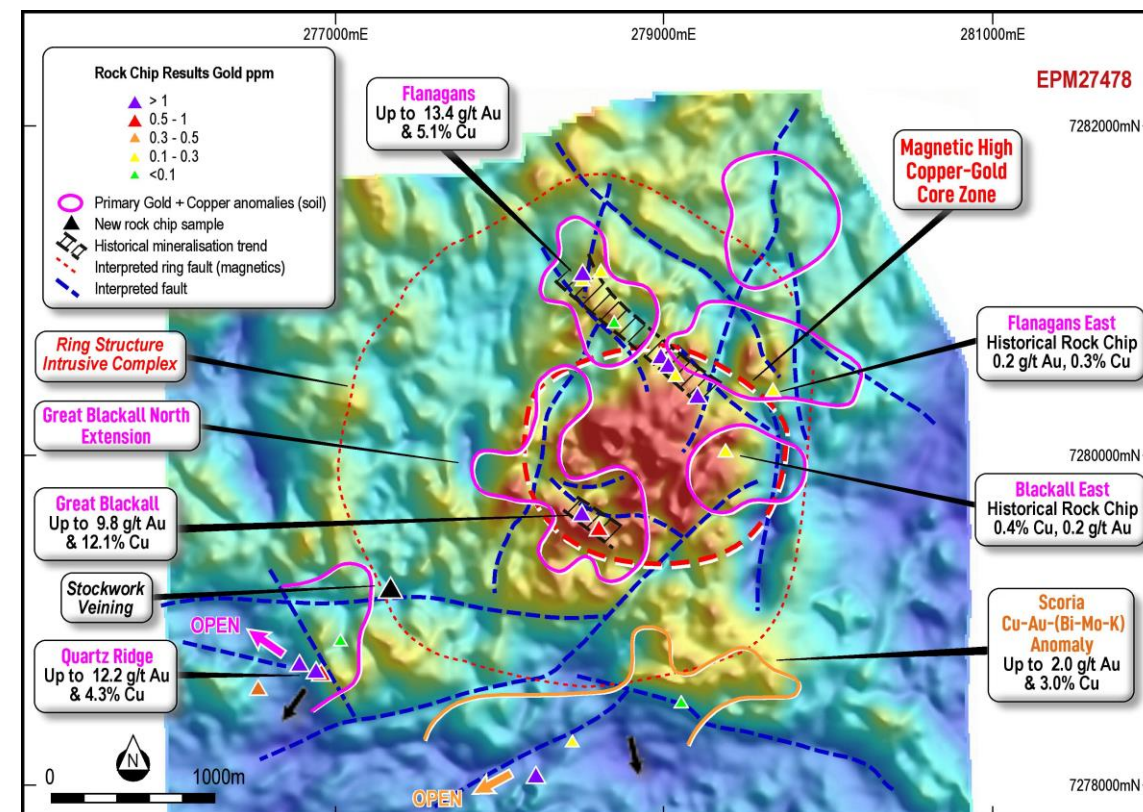


Figure 2: Total magnetic intensity (TMI) and RTP image of the drone aeromagnetic data with soil anomalies from Bindi and historical data

Soil and Rock Chip Sampling Results

- Recent soil sampling results highlight 8 new high priority Cu-Au targets
- Interpreted a large core intrusive-related system with a new Cu-Au anomalous zone extending 2km by 2km
- Soils have also extended the known areas of mineralization at Flanagans by more than 1.2km and 0.5km at Great Blackall

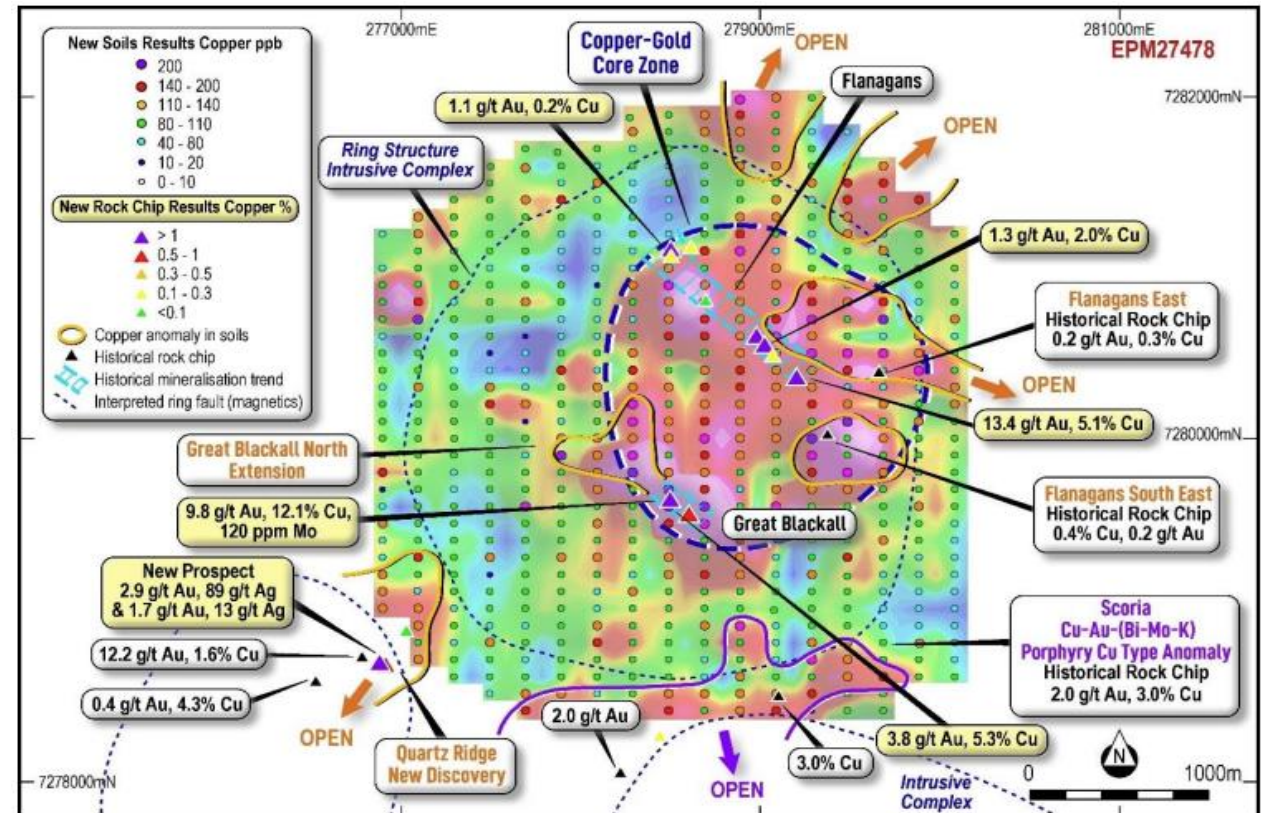


Figure 3: Copper anomalism and gridded copper in soils data using the ultra-fine fraction technique collected from the Biloela Project and recent results of rock chip sampling by Bindi.

Targeting Bulk Tonnage Copper Gold Deposit

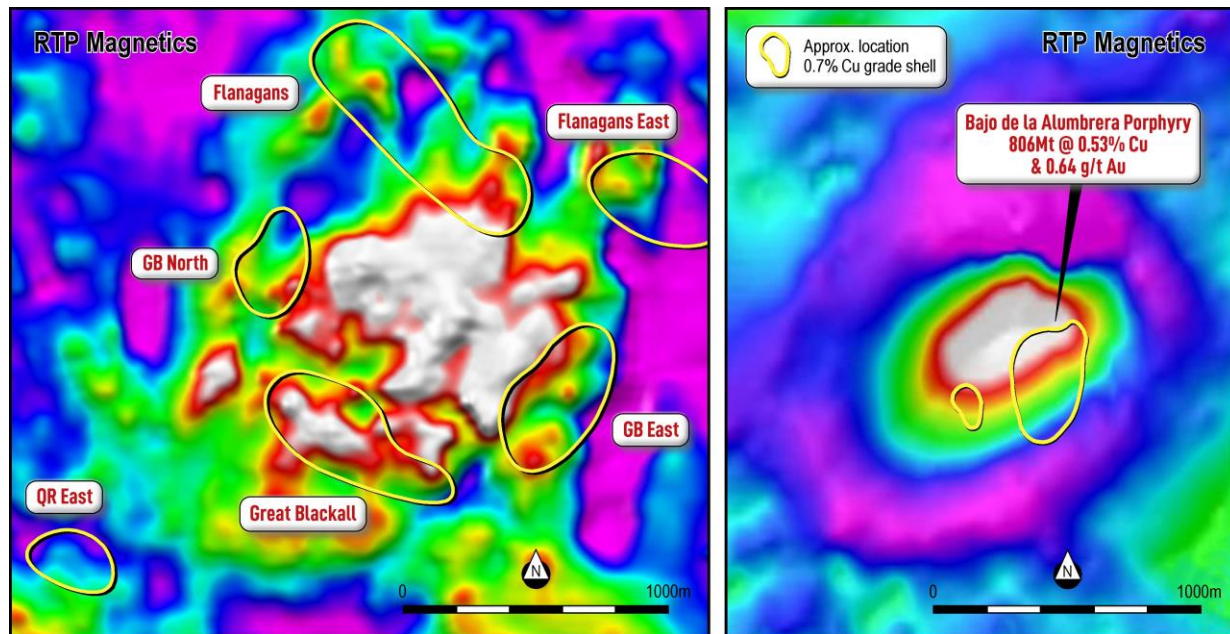


Figure 4: (left) Reduced to Pole (RTP) magnetics at Bindi's Biloela Project with strong similarities around a magnetic high related to copper-gold mineralisation and outer magnetic low donut feature at the same scale at the well known major Alumbra porphyry (right, refer Clark 2014).

- Drone magnetics confirms a strong circular magnetic feature similar to well-known intrusive systems such as the Bajo de la Alumbra Porphyry Cu-Au Deposit
- New central magnetic-high anomaly 1.3 km by 1.2 km interpreted as main source of widespread copper-gold mineralisation on the Project
- Extensive copper-gold anomalies and high-grade copper-gold mineralisation that surrounds a central, circular magnetic high feature is a hallmark of large scale mineralised copper-gold systems
- Discovery of breccia-style mineralisation at QR East is similar to the Mt Cannindah deposit and may indicate the Biloela Project is prospective for similar style deposits

Flanagan's and Extensions

- Over 1.5 km of NW-SE trending structures coincident with high-grade copper-gold mineralisation with up to 13 g/t Au and 5 % Cu and large copper-gold-in-soil anomalies at Flanagan's
- Flanagan's East over 1 km of highly anomalous copper gold in soils with up to 134 ppb Au
- Never been drill tested
- Open in all directions
- Significant potential for a large gold resource

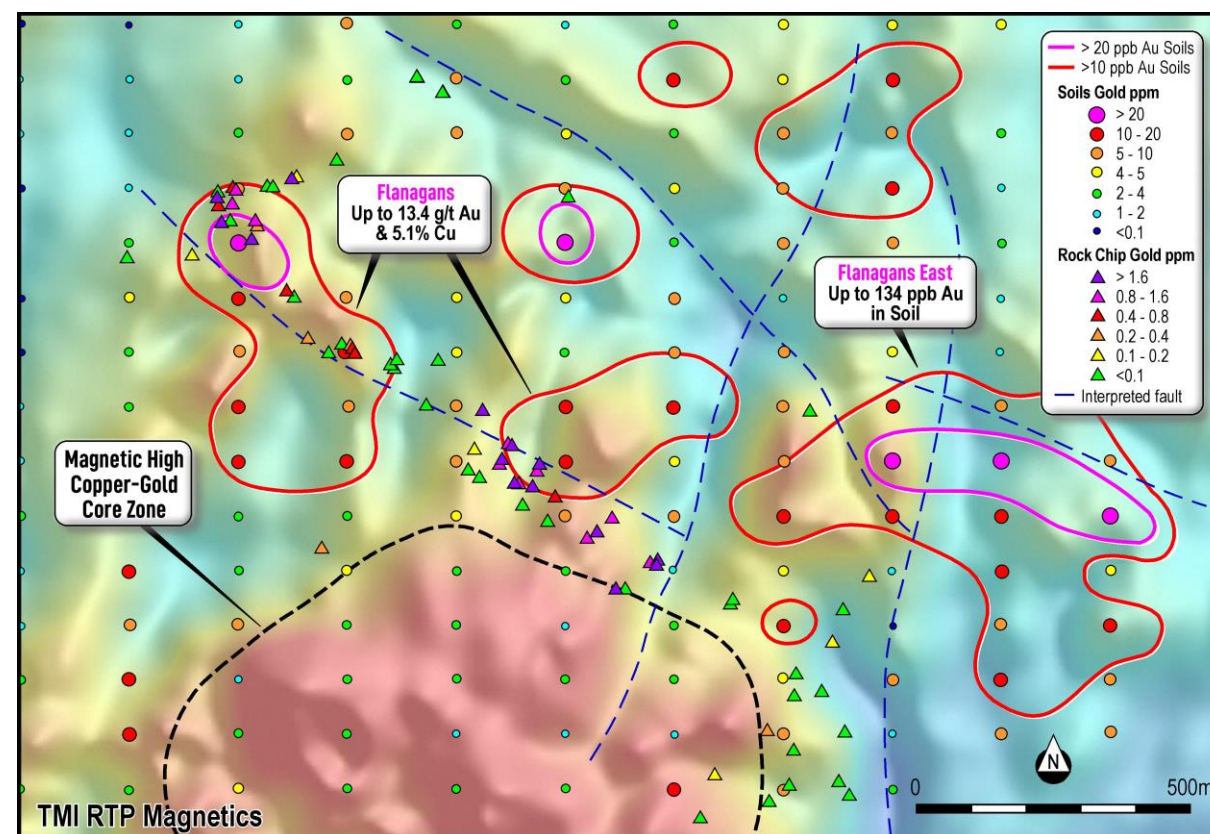


Figure 5: Flanagan's Main and East Prospects with soil anomalies (gold) and rock chips (gold) draped on drone magnetics TMI RTP image

Flanagan's High Grade Outcrop

- The regional Flanagan's trend is a high priority target for the company that has the scale and potential to host a major copper-gold deposit.



**Sample
147403 – 13.4
g/t gold, 101
g/t silver, 2.2 %
copper**



**Sample 147401 – 5.1
% copper, 1.1 g/t
gold, 38 g/t silver**

Great Blackall and Extensions

- High grade gold and copper at surface coincident with 1.8 km magnetic anomaly with up to 10 g/t Au and 12% Cu
- Wide, high grade historical drill intercepts:
12m @ 0.45 g/t Au, 12 g/t Ag, 1.85% Cu including **2m @2.1 g/t Au, 60 g/t Ag and 9.4 % Cu**
- Open in all directions
- No drilling in 30 years

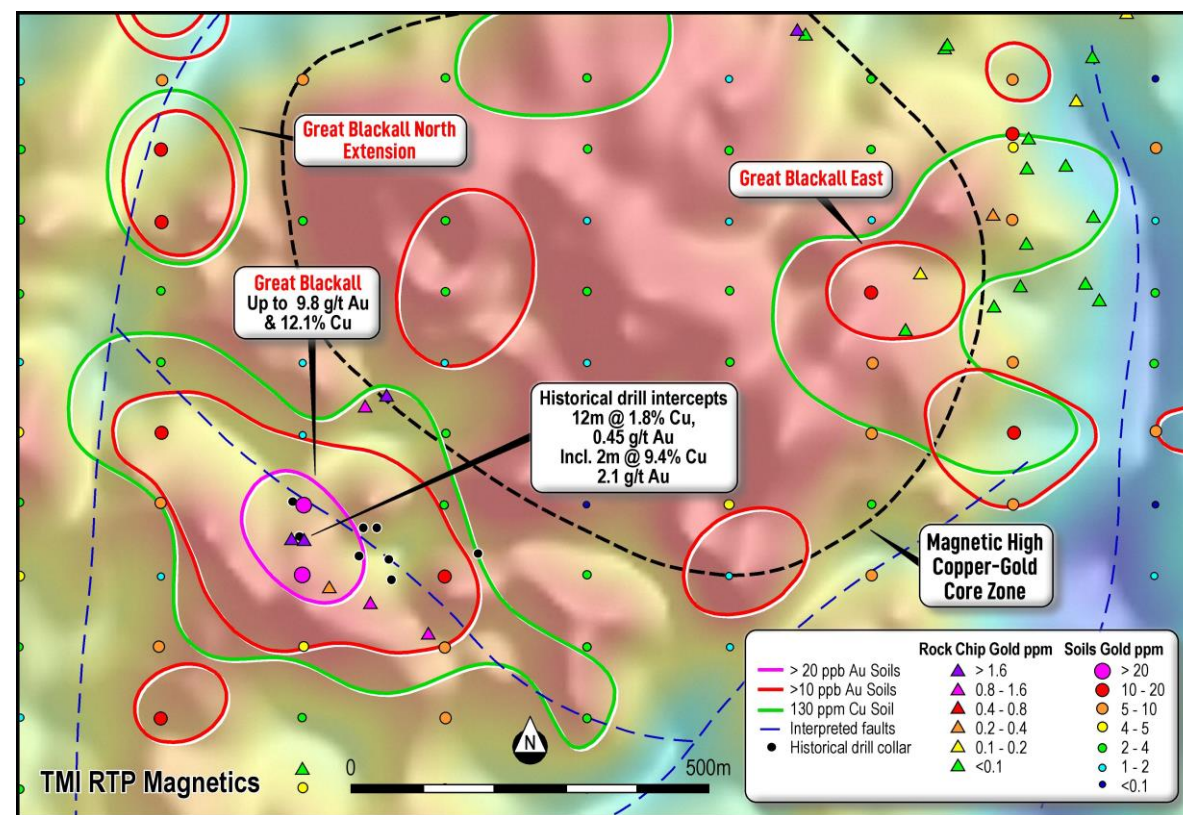
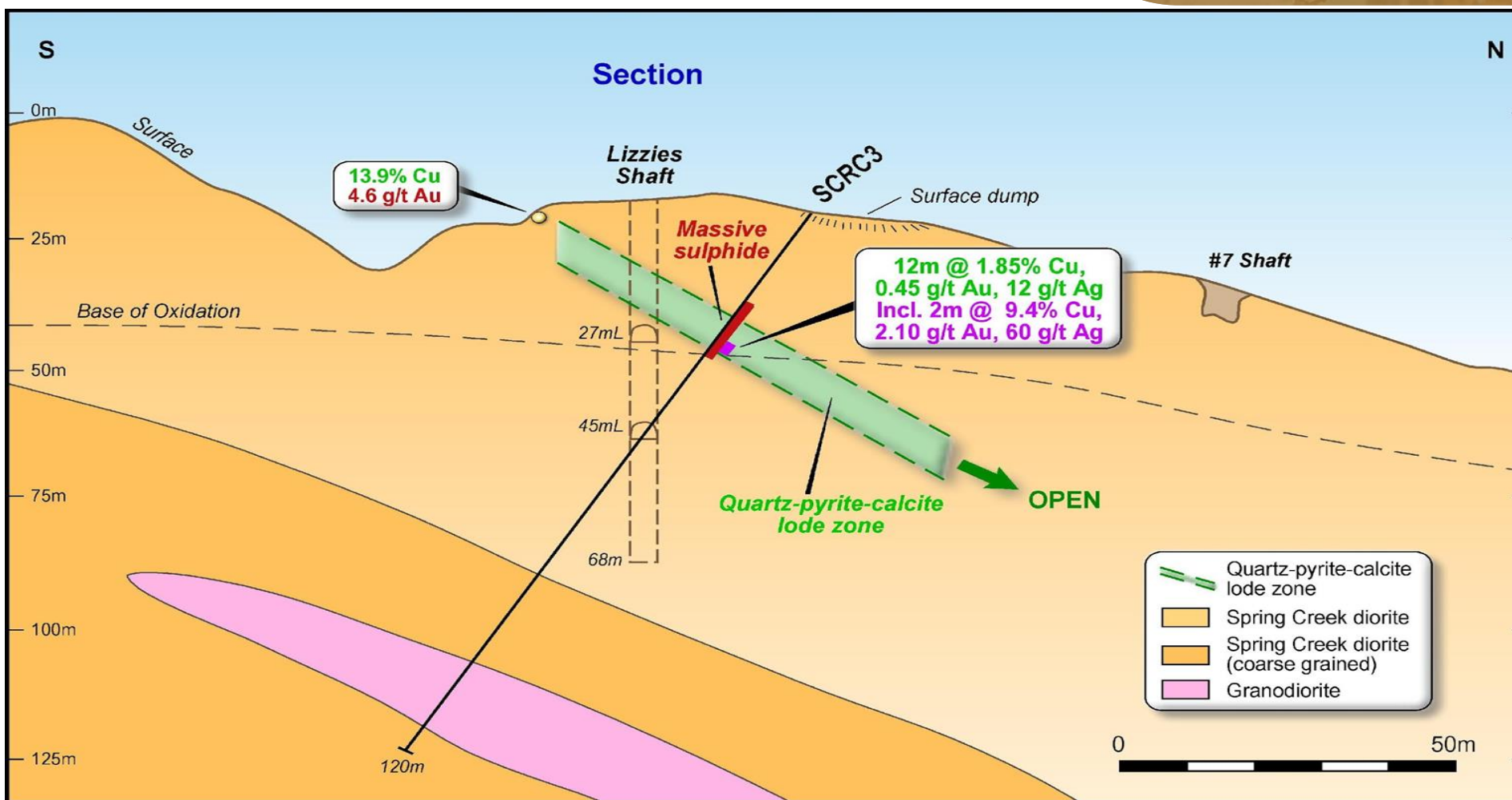


Figure 6: Great Blackall Main, North and East Prospects with soil anomalies (gold and copper) and rock chips (gold) draped on drone magnetics TMI RTP image

Great Blackall Cross Section

Figure 7: Great Blackall Prospect – Drilling cross section conceptual model



Great Blackall High Grade Outcrop



Regional Prospects

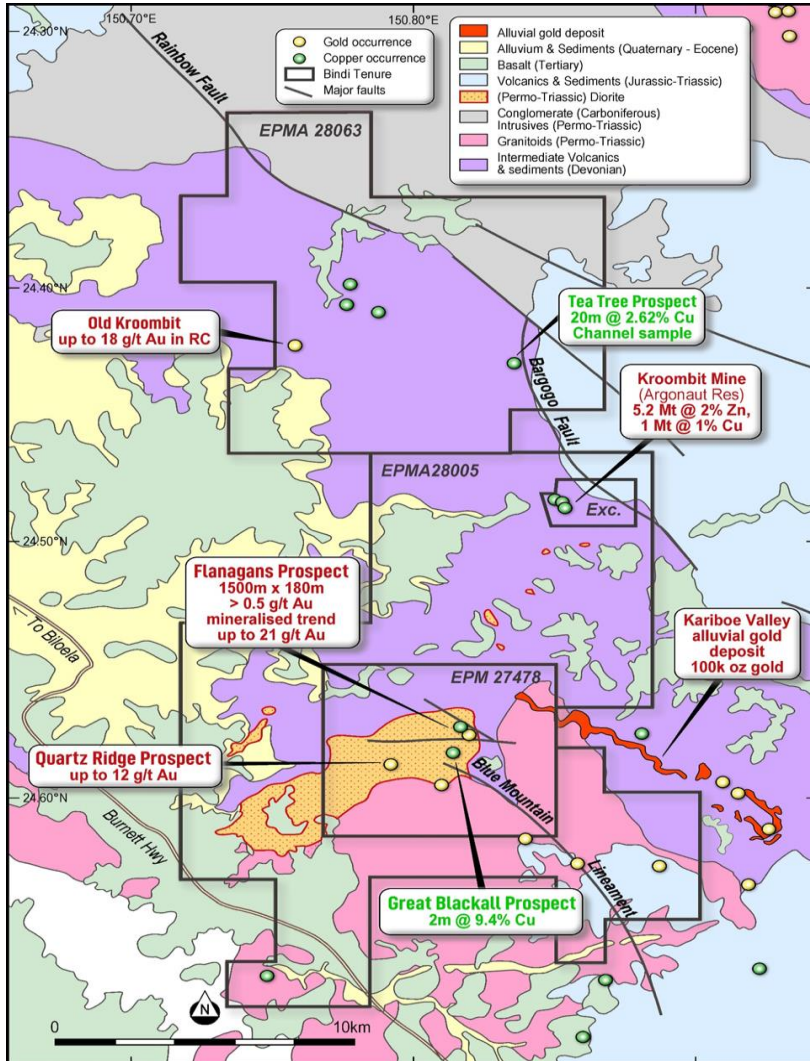


Figure 8: Regional Prospects at the Biloela Project

- Tea Tree prospect 20m @ 2.62% copper and 20m @ 1.1 % copper in channel samples 350m apart in Mt Kroombit style deposit
- Old Kroombit mine – up to 18 g/t gold in rock chips
- 22 prospects defined to date

Next Steps

- 3,000m drill program locked in to start in mid-September to test the recently defined high priority targets
- Assess assay results of recent mapping program across the project
- Mapping regional prospects and follow up anomalies highlighted in soil program

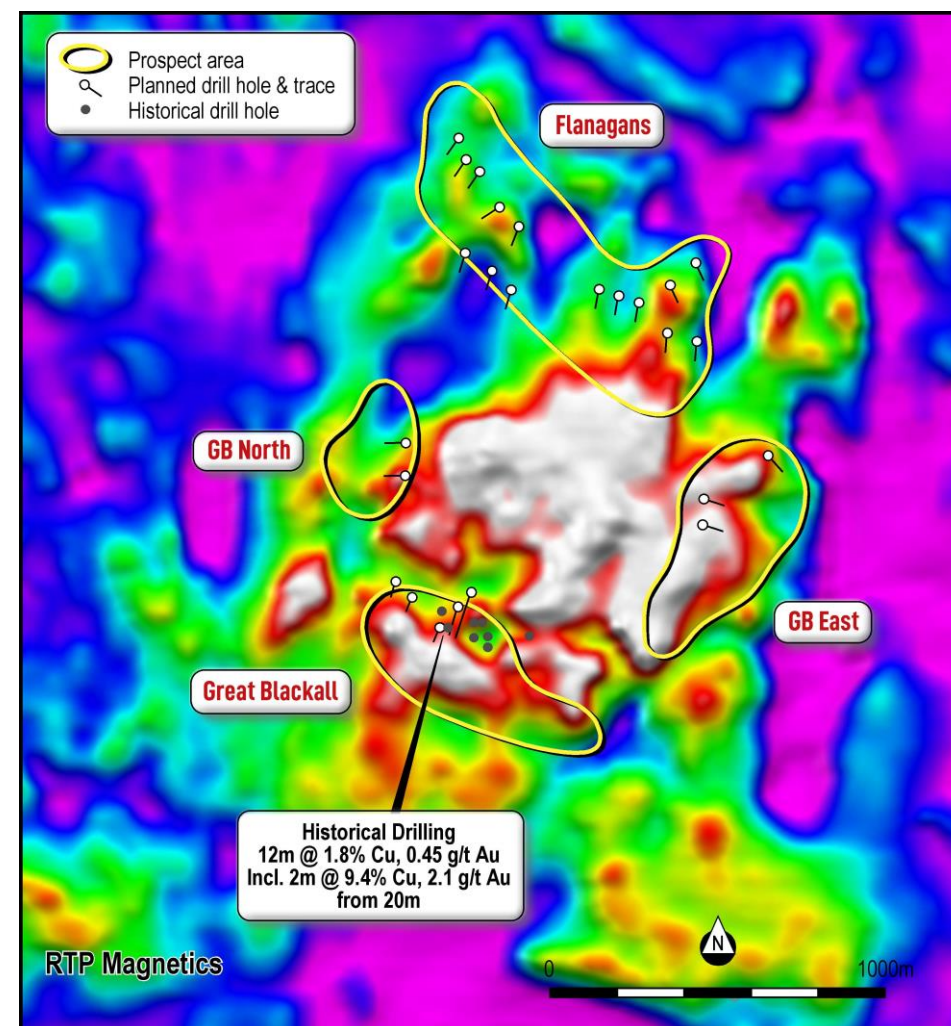
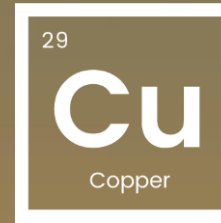


Figure 9: Drill Plan for September

Why Bindi?

- High grade gold project in a world class belt
- Large tenement package ~460 sq km
- High grade historical drill hits
- Potential for >1Moz gold deposit at Flanagan's
- Large, outcropping gold mineralized trend never been drilled



Historical
production of high
grade copper



Experienced
Management Team



High Grade
Historical Drill Hits



Gold project in a
world class belt



Biloela Copper-Gold Project, Queensland

2022