

## HORSE ROCKS LITHIUM PROJECT GRANTED

*High-impact exploration imminent*

### HIGHLIGHTS

- Horse Rocks Lithium Project granted, with the Company fully funded for major exploration programs.
- Field work to start immediately with geological mapping and rock chip sampling programs (Fig 1).
- Surface geochemical sampling anticipated to start before the end of September 2022.
- Located within the highly fertile Kalgoorlie Terrane, Horse Rocks presents an exciting lithium exploration project with mapped pegmatites that are yet to be tested for lithium.
- Horse Rocks also located within a conceptual "lithium super-province", with Mineral Resources' (ASX: MIN) Mt Marion lithium mine less than 8km away and the Bald Hill and Dome North lithium projects all within 100km of Horse Rocks and within a similar geological setting.

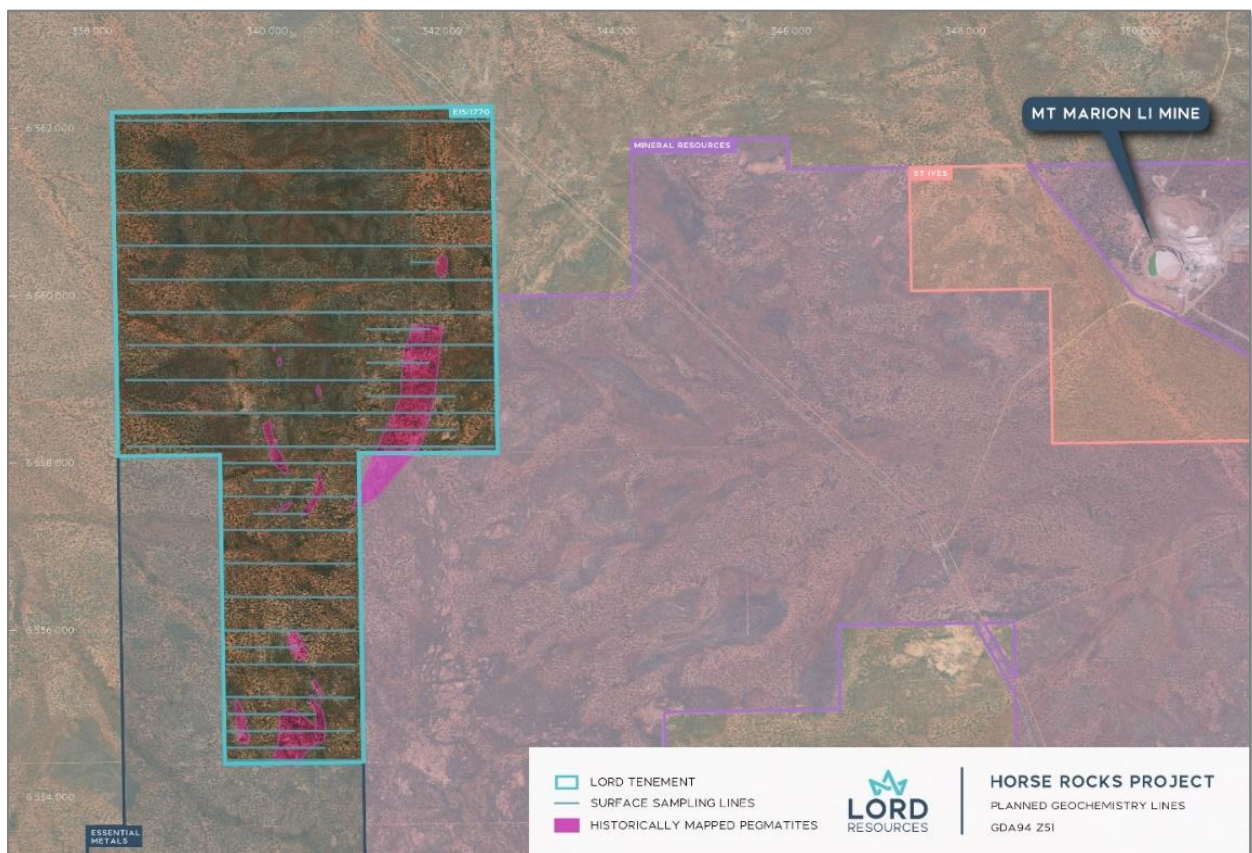


Figure 1 - Horse Rocks Project (E15/1770) with planned geochemical sampling lines overlain historically mapped pegmatites and within 8kms of Mineral Resources Mt Marion Lithium Mine.

**Commenting on the granting of Horse Rocks, Managing Director Barnaby Egerton-Warburton:**

*"We are thrilled to announce the granting of tenure for the Horse Rocks Project, the technical team is ready to hit the ground running, with a comprehensive geochemical sampling program ready to go, which will complement the geological mapping and rock chip sampling.*

*Located in one of the best lithium exploration provinces globally, the Company is excited to get to work of demonstrating the potential of Horse Rocks and hopefully making a discovery that will add to the regions already impressive lithium inventory."*

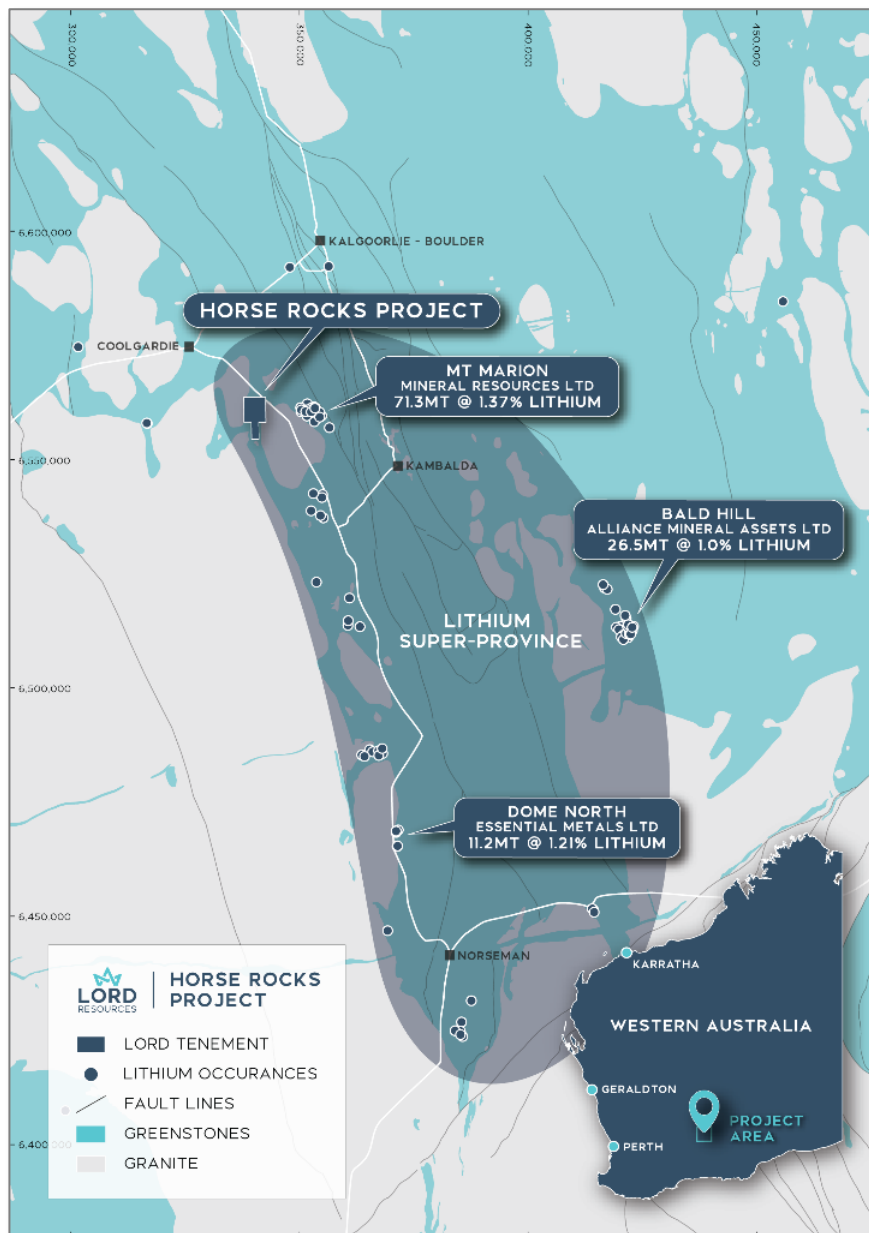


Figure 2 - Horse Rocks Lithium Project, located within the Bald Hill Lithium Super-Province.

**Lord Resources Limited (ASX: LRD) ("Lord" or the "Company")** is pleased to announce the official grant of exploration licence E15/1770, the Horse Rocks Lithium Project (Figure 1).

A comprehensive surface geochemical sampling program has been designed to cover the entire tenement area. The results of the multi-element analysis will aim to identify near surface anomalies, which will assist with drill targeting.

Concurrently, the Lord Resources technical team will carry out geological mapping and rock chip sampling, to verify the historically mapped pegmatites, and expand known occurrences.

The field crew is expected to mobilise within the week, to begin exploration, following the 5 days' notice period required by the Department of Biodiversity, Conservation and Attractions (DBCA).

This exploration program will be the first exploration for lithium within the project area.

### Geology and Background

Located 23 km south of Coolgardie in Western Australia's Eastern Goldfields, the Horse Rocks Lithium Project comprises a 23.8km<sup>2</sup> exploration licence, 8km west of Mineral Resources' (ASX: MIN) Mt Marion Lithium Mine.

The Horse Rocks Project lies within a folded portion of an isolated greenstone belt, within the Coolgardie Domain of the Yilgarn Craton (Figure 3). The greenstone belt is comprised of high-magnesium basalts, gabbroic sills and komatiite sequences. The granodiorite Depot Dome is to the immediate east of the greenstones and is the interpreted source of the many pegmatite intrusions within the tenure.

The Horse Rocks Project is considered prospective for pegmatite hosted lithium, nickel sulphide and orogenic gold mineralisation. Historical drilling has identified elevated nickel within the ultramafic sequences, along with gold anomalism in surface sampling. The lack of any exploration for lithium provides an untested conceptual opportunity for Lord Resources.

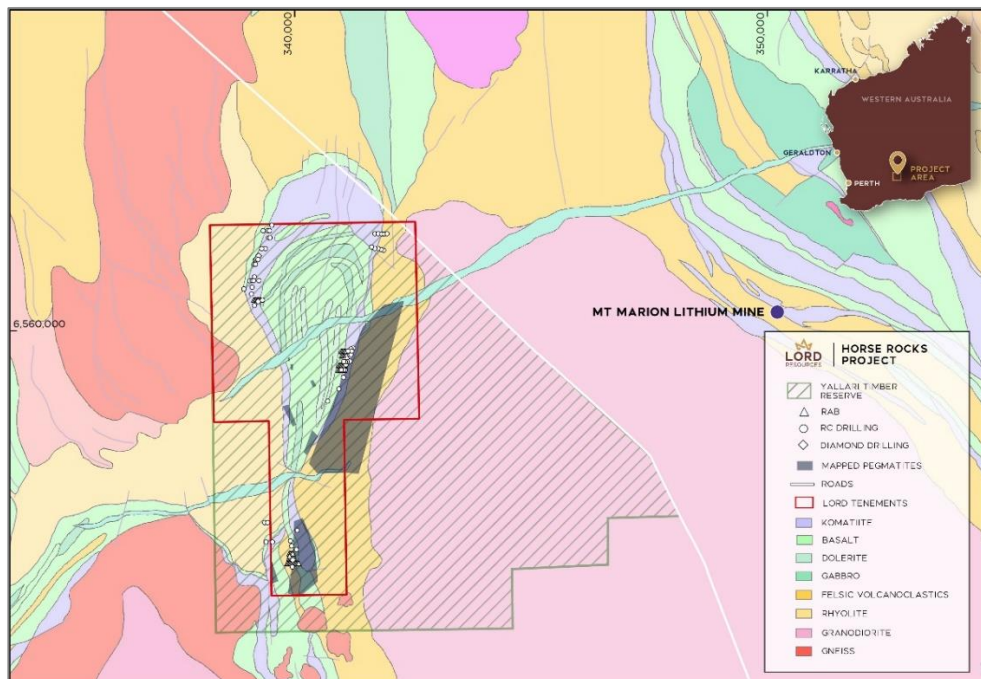


Figure 3 - Geological map of the Horse Rocks project area, showing previous drill holes.

- END -



This release is authorised by the Board of Directors of Lord Resources Limited.

For further information please contact:

**Barnaby Egerton-Warburton**

Managing Director

E: [bew@lordresources.com](mailto:bew@lordresources.com)

P: +61 437 291 155

**COMPETENT PERSON’S STATEMENT**

The information in this report that relates to exploration results is based on and fairly represents information compiled by Ms Georgina Clark, a Competent Person who is a Member of the Australian Institute of Geoscientists. Ms Clark has sufficient experience that is relevant to the style of mineralisation and type of deposit under consideration and to the activity being undertaken to qualify as a Competent Person as defined in the 2012 Edition of the ‘Australasian Code for Reporting of Exploration Results, Mineral Resources and Ore Reserves’ (“JORC Code”). Ms Clark consents to the inclusion in the report of the matters based on his information in the form and context in which it appears.

All parties have consented to the inclusion of their work for the purposes of this announcement. The interpretations and conclusions reached in this announcement are based on current geological theory and the best evidence available to the author at the time of writing. It is the nature of all scientific conclusions that they are founded on an assessment of probabilities and, however might be, they make no claim for absolute certainty. Any economic decisions which might be taken on the basis of interpretations or conclusions contained in this presentation will therefore carry an element of risk.

**ABOUT LORD RESOURCES**

Lord Resources is an exploration company with a highly prospective portfolio of future facing metals located within Western Australia’s famed Greenstone belts and close to high profile and prolific historic and producing mines. Lord Resources’ five largely unexplored projects provide exposure to lithium, nickel, PGE and gold sectors (Figure 4).

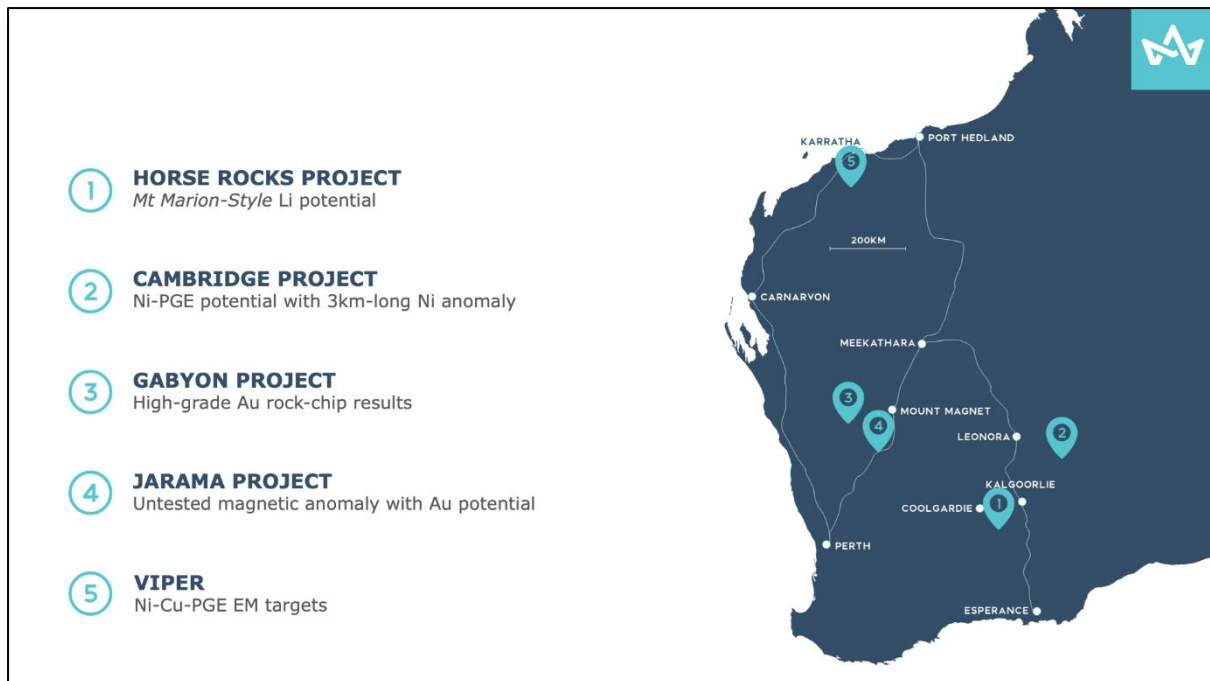


Figure 4 Lord Resources Project Portfolio