



## ASX ANNOUNCEMENT

20 September 2022



### Hines Hill Access Agreement Executed and POW to be Submitted

#### HIGHLIGHTS

- ❖ White Cliff has executed a land access agreement for the highly prospective Hines Hill REE project, paving the way for a PoW to be submitted to DMIRS
- ❖ The programme of works (PoW) covers the drilling of up to 100 AC holes at Hines Hill
  - White Cliff plans to drill to ~30m depth on a 200m x 200m spacing
- ❖ Maiden reconnaissance soil sampling program at Hines Hill confirmed the presence of rare earths (see ASX announcement 5 April 2022):
  - Maximum value of 550ppm TREO
  - 11 samples over 300ppm TREO
- ❖ The soil results correlate with magnetic features tentatively interpreted as possible carbonatite intrusives
- ❖ Interpretation of magnetic data over the tenement has identified two intrusive bodies, covering an area of ~5km<sup>2</sup> in the northeast and ~2km<sup>2</sup> in the southwest, respectively
- ❖ White Cliff is planning a reconnaissance sampling program for the Company's 100%-owned North Kellerberrin project, which adjoins Hines Hill to the west

White Cliff Minerals Limited (**White Cliff** or the **Company**) is pleased to provide an update on the Company's Hines Hill REE project in the Wheatbelt region, WA (**Figure 1**). White Cliff has recently executed a land access agreement covering the majority of Hines Hill, paving the way for a programme of works (**PoW**) to be submitted to DMIRS for the Company's maiden drilling program.

Commenting on the progress, White Cliff Technical Director Ed Mead said:

"Securing a land access agreement at Hines Hill paves the way for White Cliff to commence the maiden drill program at this highly prospective project. We have recently submitted a PoW with DMIRS, and are currently talking to a number of drilling contractors in relation to a ~3,000m Aircore program that we hope to commence in early October.

"Hines Hill, and the adjoining North Kellerberrin project, are significantly underexplored tenements with potential to host ionic clay style REE deposits, with

ASX:WCN

wcminerals.com.au

White Cliff Minerals Limited  
ABN 22 126 299 125

Level 8, 99 St Georges Tce, Perth WA 6000  
PO Box 5638 St Georges Tce, Perth WA 6831

T + 61 8 9486 4036  
F + 61 8 9486 4799

Hines Hill also having the potential for primary REE's if the tentatively interpreted carbonatite intrusives are proven in drilling. I look forward to being on the ground as maiden drilling gets underway".

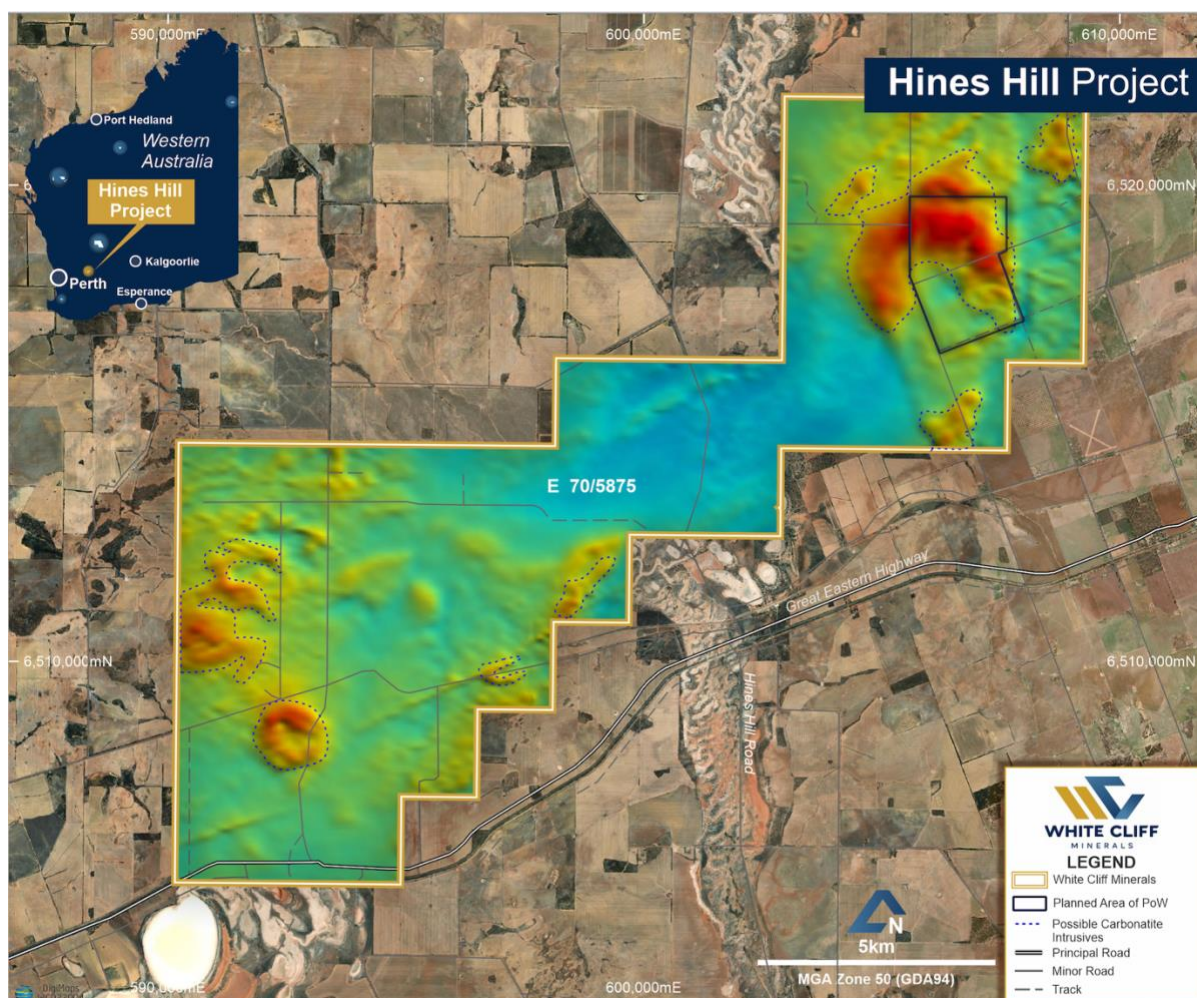


**Figure 1:** Li/REE Project location map in Western Australia

### Hines Hill - REE Project

The Hines Hill REE project consists of a single tenement (**Figures 1 and 2**), within the wheatbelt region, located about 200km east of Perth on the Great Eastern Highway. The tenement area is 128Km<sup>2</sup> covering extensive grain growing properties.

Previous sampling by White Cliff targeted two magnetic features tentatively interpreted to be carbonatite intrusives, although they may represent differential non-carbonatite intrusives (**Figure 2**). The reconnaissance program indicated these do not outcrop and occupy lower areas of the topography.



**Figure 2:** Proposed Aircore drill program area of PoW

## UPCOMING NEWSFLOW

**September:** Remaining assays from July Yinnetharra rock chip sampling program

**September:** Audited Financial Report

**Sep/Oct:** Processing of existing magnetic data at Diemals REE/Li project

**October:** Maiden Aircore drill program at Hines Hill REE project

**October:** Assays from September Yinnetharra rock chip sampling program

**October:** Surface sampling program, Diemals REE/Li project

**November:** High resolution magnetics/radiometrics survey at Yinnetharra REE/Li project

**November:** Annual General Meeting

**November:** Heritage survey at Yinnetharra REE/Li project

**December:** Maiden RC program at Yinnetharra REE/Li project

**ENDS**

**Further Information:**

Dan Smith  
Director  
+61 8 9486 4036

Edward Mead  
Director  
+61 8 9486 4036

*This announcement has been approved by the Board of White Cliff Minerals Limited.*

**Competent Persons Statement**

The Information in this report that relates to exploration results, mineral resources or ore reserves is based on information compiled by Mr Allan Younger, who is a Member of the Australasian Institute of Mining and Metallurgy. Mr Younger is an employee of the company. Mr Younger has sufficient experience which is relevant to the style of mineralisation and type of deposits under consideration and to the activity that he is undertaking to qualify as a Competent Person as defined in the 2012 edition of the 'Australian Code for Reporting Exploration Results, Mineral Resources and Ore Reserves' (the JORC Code). Mr Younger consents to the inclusion of this information in the form and context in which it appears in this report.

White Cliff confirms that it is not aware of any new information or data that materially affects the information included in the original market announcements. White Cliff confirms that the form and context in which the Competent Person's findings are presented have not been materially modified from the original market announcements.