

---

## **EXPLORATION COMMENCED AT HORSE ROCKS LITHIUM PROJECT**

---

### **HIGHLIGHTS**

- Surface geochemical sampling has commenced at Horse Rocks Lithium Project.
- Sampling is expected to take two weeks to complete.
- This sampling program will be the first exploration for lithium in the Horse Rocks project area.



**Lord Resources Limited (ASX: LRD) ("Lord" or the "Company")** is pleased to announce that field work has commenced at the Horse Rocks Lithium Project.

A comprehensive surface geochemical sampling program has been designed to cover the entire tenement area. The results of the multi-element analysis will aim to identify near surface anomalies, which will assist with drill targeting.

Concurrently, the Lord Resources technical team will carry out geological mapping and rock sampling, to verify the historically mapped pegmatites, and expand known occurrences.

This sampling program will be the first exploration for lithium within the project area.

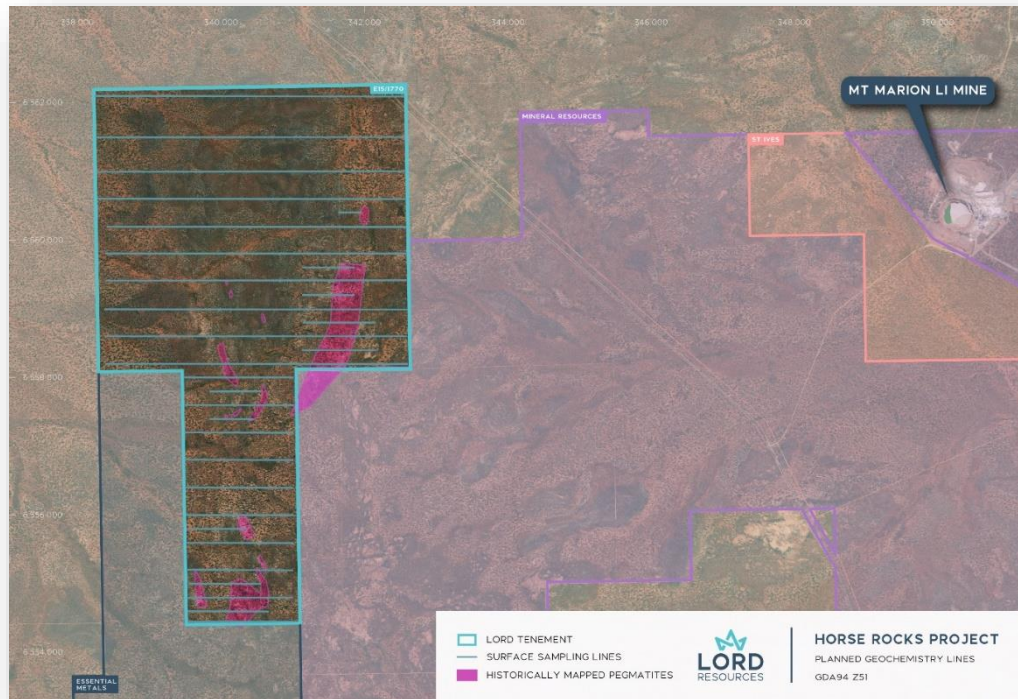


Figure 1 – Horse Rocks Project (E15/1770) with planned power auger lines overlain mapped pegmatites and within 8kms of Mineral Resources Mt Marion Lithium Mine.

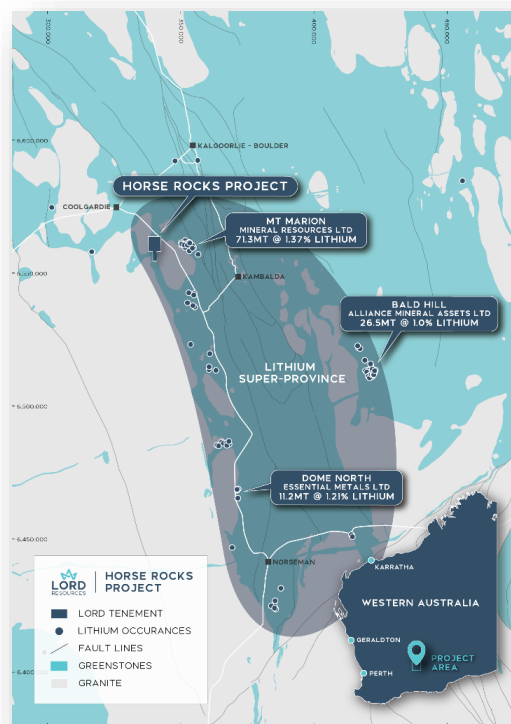


Figure 1 - Horse Rocks Lithium Project, located within the Bald Hill Lithium Super-Province.

- END -

This release is authorised by the Board of Directors of Lord Resources Limited.

For further information please contact:

**Barnaby Egerton-Warburton**

Managing Director

E: [bew@lordresources.com](mailto:bew@lordresources.com)

P: +61 437 291 155

### **COMPETENT PERSON'S STATEMENT**

The information in this report that relates to exploration results is based on and fairly represents information compiled by Ms Georgina Clark, a Competent Person who is a Member of the Australian Institute of Geoscientists. Ms Clark is a Consultant to the Company. Ms Clark has sufficient experience that is relevant to the style of mineralisation and type of deposit under consideration and to the activity being undertaken to qualify as a Competent Person as defined in the 2012 Edition of the 'Australasian Code for Reporting of Exploration Results, Mineral Resources and Ore Reserves' ("JORC Code"). Ms Clark consents to the inclusion in the report of the matters based on her information in the form and context in which it appears.

All parties have consented to the inclusion of their work for the purposes of this announcement. The interpretations and conclusions reached in this announcement are based on current geological theory and the best evidence available to the author at the time of writing. It is the nature of all scientific conclusions that they are founded on an assessment of probabilities and, however might be, they make no claim for absolute certainty. Any economic decisions which might be taken on the basis of interpretations or conclusions contained in this presentation will therefore carry an element of risk.