



**ANNUAL REPORT  
30 JUNE 2022**

**ABN 51 119 678 385**

## Contents

Corporate Directory	2
Chairman's Letter to Shareholders	3
Directors' Report	4
Auditor's Independence Declaration	35
Financial Statements	37
Directors' Declaration	69
Independent Auditor's Report	70
Additional Shareholder Information	74
Schedule of Mineral Tenements	76

## Corporate Directory

**Non-Executive Chairman**

Mel Ashton

**Managing Director**

Andrew Radonjic

**Non-Executive Directors**

John Jetter

**Company Secretary**

Jamie Byrde

**Principal & Registered Office**

Level 3, 24 Outram Street

West Perth WA 6005

Telephone: (08) 6279 9428

Facsimile: (08) 6500 9986

**Stock Exchange Listing**

Australian Securities Exchange

(Home Exchange: Perth, Western Australia)

Code: VMS

**Website Address**

[www.ventureminerals.com.au](http://www.ventureminerals.com.au)

**Share Registry**

Automic Group

Level 5, 191 St Georges Terrace

Perth WA 6000

**Auditors**

Stantons

Level 2

40 Kings Park Road

WEST PERTH WA 6005

**Bankers**

National Australia Bank

50 St Georges Terrace

PERTH WA 6000

## Chairman's Letter to Shareholders

Dear fellow shareholders,

On behalf of the Directors of Venture Minerals Limited ("Venture"), I present to shareholders the Company's annual report for the year ended 30 June 2022.

The 2022 financial year has been an evolving year for Venture, a year which included many highs and lows but more importantly Venture achieved its first shipment of iron ore at our Riley Iron Ore Mine from the Port of Burnie which was significant for the local workforce in Tasmania who worked extremely hard to achieve this. Unfortunately, the tough decision to suspend operations was difficult for all stakeholders, the Board had to act and it did so in the best interests of the Company.

Venture's strong portfolio of diverse mineral resource projects afforded Venture to reset and focus on the company's flagship Mount Lindsay Tin-Tungsten Project in Tasmania and continue to employ our local Tasmanian workforce. With the key appointment of Glen Van Vlemen, a highly experience mining engineer to lead the project through the studies and into production, the Board and Management look forward to delivering our Underground Pre-Feasibility Study in the near term..

During the year the company focused not only on its flagship Tasmanian project but also on its Western Australian portfolio of assets including the joint venture with Chalice Mining on its South West Project and its highly prospective Kulin and Golden Grove North projects.

The recent decision in August by our Joint Venture Partner Chalice Mining to continue into the second stage of the earn in on the South West Project with a further \$2.5 million of expenditure provides our shareholders with exploration upside and for Venture to preserve its cash position is a potentially value creating prospect over the next 12 to 24 months. We look forward to what the next round of exploration results may deliver.


We would like to thank the people of Tasmania and in particular the local community, government of Tasmania and our employees in Tullah, Tasmania who have for over 10 years supported the company and its activities in the region. We hope to continue to deliver benefits for the community, whilst also adhering to some of the worlds strictest environmental permit conditions. The community remains a key stakeholder for the Company and together with our local workforce is paramount to the success of our projects in Tasmania.

After the completion of the first shipment of iron ore, we understand and heard from our shareholders their disappointment, and we certainly respect this. We believe this led to the company receiving its first strike against the remuneration report. The Board respects shareholder views and will continue to strive to listen, however the Board will not hesitate to make the tough calls in the future if they are considered in the best interest of the company.

Despite the broader macro challengers of the past year, we have come out of the other side since closing the Riley Iron Ore Mine in September 2021 and we look forward to the year ahead.

I would like to thank our existing and new Shareholders for your continued support of our strategy, demonstrated by our \$4.25 million placement and accompanying share purchase plan which raised a further \$6 million before costs in December 2021.

I would like to thank the Board and Management team for their support in what has been an extremely busy year. I thank our staff which are predominately a local Tasmanian workforce who have continued to strive towards achieving our goals of ultimately developing our flagship asset Mount Lindsay Project, and our shareholders for continued belief and support in Venture Minerals through this important growth phase of our business.



**Mel Ashton**  
Chairman

## Directors' Report for the year ended 30 June 2022

The Directors of Venture Minerals Limited submit herewith the consolidated financial statements of the Company and its controlled entities ("Group" or "Consolidated Entity") for the financial year ended 30 June 2022 in order to comply with the provisions of the *Corporations Act 2001*.

### 1. Directors

The following persons were Directors of Venture Minerals Limited during the whole of the financial year and up to the date of this report, unless otherwise stated:

Mr Mel Ashton	Non-Executive Chairman
Mr Andrew Radonjic	Managing Director
Mr John Jetter	Non-Executive Director
Mr Hamish Halliday	Non-Executive Director (Resigned on 26 November 2021)

### 2. Principal Activities

The principal activity of the consolidated entity during the financial year was mineral exploration and development. There were no significant changes in the nature of the consolidated entity's principal activities during the financial year.

### 3. Group Financial Overview

#### Profit and Loss

The loss attributable to owners of the consolidated entity after providing for income tax amounted to \$17,757,239 (2021: \$11,750,079).

#### Financial Position

The consolidated entity had \$9,430,190 in cash and cash equivalents as at 30 June 2022 (2021: \$9,487,773). The consolidated entity had net assets of \$8,965,271 (2021: \$11,517,622) at 30 June 2022.

### 4. Dividends Paid or Recommended

The Directors do not recommend the payment of a dividend and no amount has been paid or declared by way of a dividend to the date of this report.

### 5. Significant Changes in the State of Affairs

On 28 September 2021, the Company announced that it has utilised At-the-Market facility ("ATM" with Acuity Capital to raise \$3.32 million (inclusive of costs) by agreeing to issue 51,000,000 fully paid ordinary shares at an issue price of \$0.065 per share.

On 17 December 2021, a placement to sophisticated, professional and institutional investors was completed raising \$4.25 million before costs through the issue of 118,055,556 fully paid ordinary shares at an offer price of \$0.036.

On 6 January 2022, a Share Purchase Plan ("SPP") was completed, raising \$6.0 million before costs through the issue of 166,666,302 fully paid ordinary shares at an offer price of \$0.036.

## 6. Review of Operations

### Introduction

#### Mount Lindsay Tin-Tungsten

The Mount Lindsay Project (159 km<sup>2</sup>) is located in north-western Tasmania (*Refer Figure 1*) within the contact metamorphic aureole of the highly perspective Meredith Granite. The project sits between the world class Renison Bell Tin Mine (Metals X Ltd/Yunnan Tin Group >230kt of tin metal produced since 1968) and the Savage River Magnetite Mine (operating for >50 years, currently producing approximately 2.5mtpa of iron pellets). Mount Lindsay has excellent access to existing infrastructure including hydropower, water, sealed roads, rail and port facilities.

Venture owns 100% of the tenure that hosts both the Mount Lindsay Tin-Tungsten Deposit and all the surrounding prospects.

Since commencing exploration on the project in 2007, Venture has completed approximately 88,000m of diamond core drilling at Mount Lindsay and defined JORC compliant Measured, Indicated and Inferred Resources.

**Figure 1 | Location Map for Mount Lindsay Tin-Tungsten Deposit/Riley DSO Deposit/Livingstone DSO Deposit**



## 6. Review of Operations (continued)

### Tin-Tungsten Resources

Table 1 | Resource Statement – Mount Lindsay Tin-Tungsten Project (as previously announced 17 October 2012)

Lower Cut (Tin equiv)	Category	Tonnes	Tin Equiv. Grade	Tin Grade	Tungsten Grade (WO <sub>3</sub> )	Mass Recovery of Magnetic Iron (Fe) Grade	Copper Grade	Contained Tin Metal (tonnes)	Contained WO <sub>3</sub> (mtu)
0.2%	Measured	8.1Mt	0.6%	0.2%	0.1%	17%	0.1%	18,000	1,100,000
	Indicated	17Mt	0.4%	0.2%	0.1%	15%	0.1%	32,000	1,200,000
	Inferred	20Mt	0.4%	0.2%	0.1%	17%	0.1%	32,000	960,000
	<b>TOTAL</b>	<b>45Mt</b>	<b>0.4%</b>	<b>0.2%</b>	<b>0.1%</b>	<b>17%</b>	<b>0.1%</b>	<b>81,000</b>	<b>3,200,000</b>
0.45%	Measured	4.3Mt	0.8%	0.3%	0.2%	18%	0.1%	12,000	980,000
	Indicated	5.2Mt	0.7%	0.3%	0.2%	15%	0.1%	14,000	810,000
	Inferred	3.9Mt	0.6%	0.3%	0.1%	9%	0.1%	12,000	520,000
	<b>TOTAL</b>	<b>13Mt</b>	<b>0.7%</b>	<b>0.3%</b>	<b>0.2%</b>	<b>14%</b>	<b>0.1%</b>	<b>38,000</b>	<b>2,300,000</b>
0.7%	Measured	2.2Mt	1.1%	0.3%	0.3%	18%	0.1%	8,000	750,000
	Indicated	1.9Mt	1.0%	0.4%	0.3%	11%	0.1%	7,000	480,000
	Inferred	0.6Mt	1.0%	0.5%	0.3%	3%	0.1%	3,000	150,000
	<b>TOTAL</b>	<b>4.7Mt</b>	<b>1.1%</b>	<b>0.4%</b>	<b>0.3%</b>	<b>13%</b>	<b>0.1%</b>	<b>18,000</b>	<b>1,400,000</b>
1.0%	Measured	1.0Mt	1.5%	0.5%	0.5%	19%	0.1%	5,000	450,000
	Indicated	0.7Mt	1.3%	0.5%	0.3%	10%	0.1%	4,000	220,000
	Inferred	0.2Mt	1.4%	0.7%	0.3%	<1%	<0.1%	2,000	70,000
	<b>TOTAL</b>	<b>1.9Mt</b>	<b>1.4%</b>	<b>0.5%</b>	<b>0.4%</b>	<b>14%</b>	<b>0.1%</b>	<b>10,000</b>	<b>750,000</b>

**Note:** Reporting to two significant figures. Figures have been rounded and hence may not add up exactly to the given totals. Full details of the estimate are in the ASX release for the Quarterly Report on 17 October 2012. This information was prepared and first disclosed under the JORC Code 2004. It has not been updated since to comply with the JORC Code 2012 on the basis that the information has not materially changed since it was last reported.

**Notes:**

- The Sn equivalent formula used to calculate the Sn equivalent values for the Main and No.2 Skarns is as follows: Sn Equivalent (%) = Sn% + (WO<sub>3</sub>% x 1.90459) + (mass recovery % of magnetic Fe x 0.006510) + (Cu% x 0.28019). Whereas for the Sn Equivalent formula used to calculate the Sn equivalent values for the Stanley River South and Reward Skarns is as follows: Sn Equivalent (%) = Sn% + (WO<sub>3</sub>% x 1.65217) + (Cu% x 0.34783);
- The mass recovery of the magnetic iron is determined mostly by Davis Tube Results ("DTR");
- The Sn equivalent formula uses a tin metal price of US\$23,000/t, an APT (Ammonium Para Tungstate) price of US\$380/mtu (1mtu=10kgs of WO<sub>3</sub>), a magnetite concentrate price of US\$110/t and a copper metal price of US\$8,000/t;
- Pilot scale metallurgical testwork has been completed on the Main and No.2 Skarns with results indicating the metallurgical recovery for tin is 72%, for WO<sub>3</sub> is 83%, for iron in the form of magnetite is 98% and for copper is 58%. The results of this testwork are stated in the ASX release dated 31 August 2012;
- It is the Company's opinion that the tin, WO<sub>3</sub> and copper, as included in the metal equivalent calculations for the Stanley River South and Reward Skarns, have reasonable potential to be recovered for when the Mount Lindsay Project goes into production.

The resource base at Mount Lindsay is hosted within two magnetite rich skarns (Main Skarn and the No.2 Skarn) which extend over a total strike of 2.8 km and remain open at depth. Additional indicated and inferred resources have been defined at the Reward and Stanley River South Prospects, which extend over an additional 1.1 km of strike.

Venture has focused its current efforts at Mount Lindsay on identifying additional high-grade tin-tungsten targets, in close proximity to the Mount Lindsay Deposit (Refer Figure 2). The low-cost exploration work is part of a broader strategy focused on identifying high grade mineralisation within trucking distance of the existing deposit that has the potential to further strengthen the economics of the Mount Lindsay Project.

## 6. Review of Operations (continued)

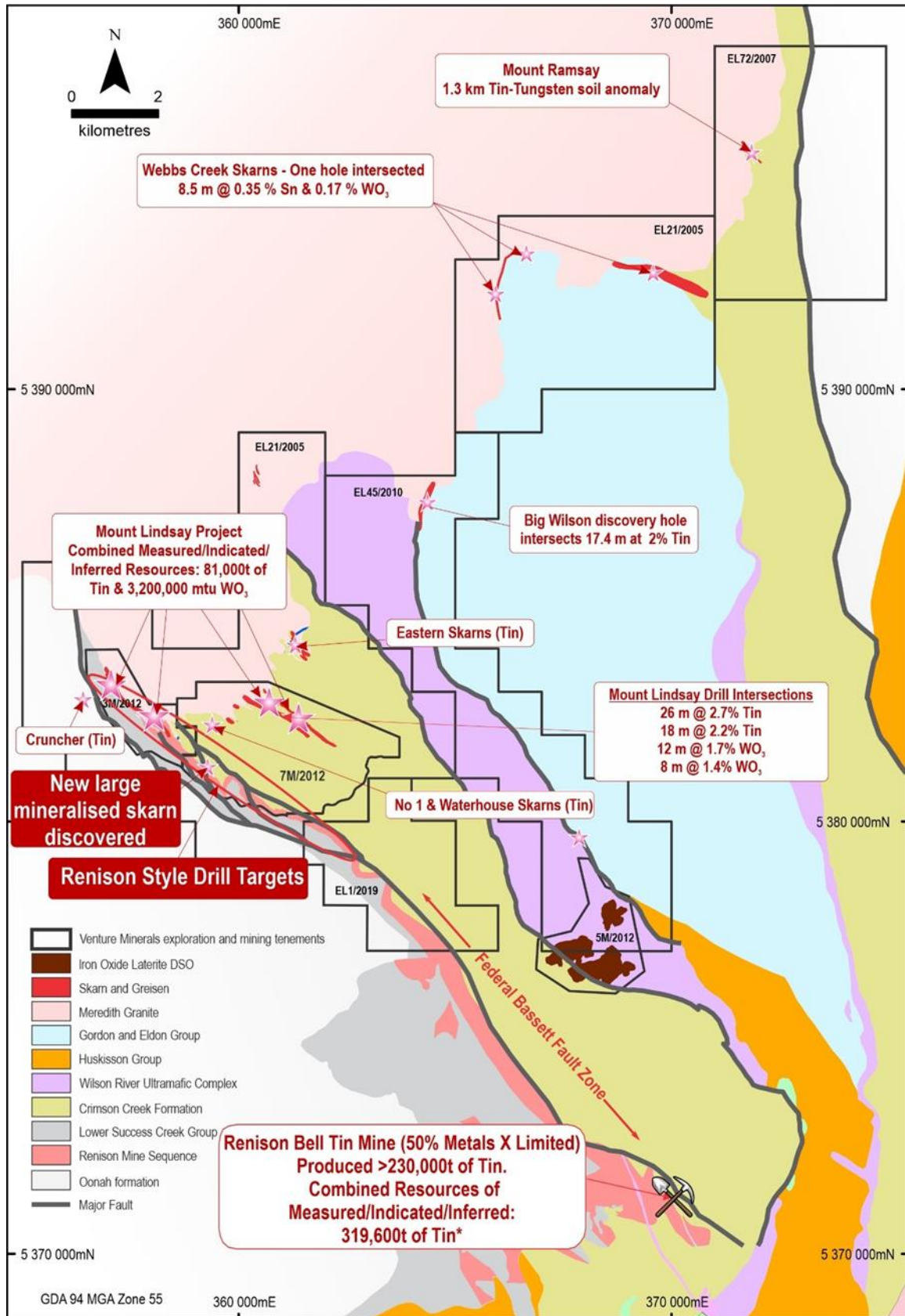
### Activities during the Year

- \$10.25 Million Placement and Heavily Oversubscribed Share Purchase Plan undertaken to advance the Mount Lindsay Tin-Tungsten Project;
- Drilling returns 93 metre zone of Tin–Tungsten Mineralisation from ML339M including 12 metres at 1.7% Tin equivalent;
- Record Breaking Drill Intersection at Mount Lindsay - 147 metres @ 1.0% Tin from ML340M;
- Tin is an EV Metal in short supply. It is listed as a Critical Mineral by numerous countries around the world. There is currently (at the time of this report) less than one weeks' global supply of tin held in stockpiles by the London Metal Exchange (LME);
- Mount Lindsay is already one of the largest undeveloped tin projects in the world, containing in excess of 80,000 tonnes of tin metal and a globally significant tungsten resource containing 3,200,000 MTU (metric tonne unit) of WO<sub>3</sub> with ~70% in the Measured & Indicated JORC compliant resource categories;
- Major landholding in a premier tin district and a globally recognised tier one ESG hub;
- Tungsten's APT price is at ~US\$327/mtu (at the time of this report), increased by ~90% since early 2016;
- The Underground Mine Feasibility Study has commenced, leveraging off the previously completed (open-pit dominant) Feasibility Study which included more than 100,000m of diamond core drilling completed predominantly by Venture Minerals;
- Resumption of Tin Exploration at Mount Lindsay has led to the Discovery of a Large Mineralised Skarn along strike from Renison Bell Tin Mine and a Sulfide-rich Skarn along strike from the Mount Lindsay Tin–Tungsten Deposit;
- Completion of metallurgical drilling, delivered further outstanding tin-tungsten drill intersections with 158.5 m @ 0.8% Sn and 0.1% WO<sub>3</sub> from 78 m in ML344M from the Main Skarn deposit and 99 m @ 0.3% WO<sub>3</sub> from 63 m in ML347M from the No.2 Skarn deposit (*Refer to ASX Announcement 29 March 2022*);
- Appointment of Mining Engineer, Glenn Van Vlemen and other key consultants and contractors to advance the Mining, Metallurgical, Geotechnical, Hydrogeological and Environmental facets of the study. Previously engaged BHM Processing Consultants, continued to progress the metallurgical test program to optimise a cost effective, gravity-focused, processing flowsheet. Non-process infrastructure studies have commenced including discussions with power providers with access to Wind and Hydropower being assessed;
- Received final version of the Environmental Impact Statement Project Specific Guidelines for the Mount Lindsay Project. Permitting Consultants, Pitt & Sherry have scheduled North Barker Ecosystem Services in Tasmania to complete the Flora & Fauna Survey.



6. Review of Operations (continued)

Figure 2 | Map showing High Grade Tin-Tungsten Targets



\* See Metals X Announcement "2022 Renison Mineral Resource Update", 14 June 2022.

## 6. Review of Operations (continued)

### South West Project, Base & Precious Metals, Western Australia (Chalice earning-in)

#### Introduction

The South West Project contains the Thor and Odin Prospects within its tenement package (256 km<sup>2</sup>) and is located 240 km south of Perth, hosted within the Balingup Gneiss Complex (*Refer Figure 3*). A joint venture between Teck Cominco and BHP Billiton, first identified this area as being prospective for base and precious metals hosted within the complex. The joint venture completed surface sampling and airborne EM surveys which culminated in the discovery of a base and precious metals deposit (Kingsley Prospect) which Teck identified as a meta-Volcanic Massive Sulfide (“VMS”) system in high grade metamorphic rocks. Venture’s nearby Thor prospect hosts a strong and coherent arsenic in laterite anomaly, with locally elevated levels of copper, zinc, tin, bismuth, tungsten and antimony, elements that are typically elevated in VMS systems.

#### Thor Prospect

Following the discovery of the main Thor target, as well as three additional anomalies to the east, the Company then worked on extending and refining the known exploration targets. This resulted in surface sampling extending the main Thor target, and also identifying additional targets to the north and south, pushing the total combined strike to over 10 km of EM and geochemical targets.

The Company later acquired the northern extension, so that Thor now encompasses some 24-strike km of prospective geology which already hosts multiple VMS Style targets.

Venture then, through the initial drilling program, confirmed the presence of VMS style mineralisation and now has a 20 km VMS target zone at Thor (*Refer Figure 5*). Following on a new high-resolution airborne EM survey delivered priority VMS drill targets for testing within the original Thor area (*Refer Figure 6*).

The second phase of drilling at the Thor Prospect intersected further massive sulfides with Copper and Zinc mineralisation. The assay results received from the last two drill holes suggest that the Company is vectoring in towards higher grade zones within the Thor VMS sequence.

Thor has seen only two single drill holes targeting two of the thirteen priority VMS drill targets delineated around the initial discovery area. Further drilling will go towards unlocking the potential of Thor’s 20km VMS target zone, believed to host Golden Grove type mineralisation.

The South West Project (256 km<sup>2</sup>) is located ~240 km south of Perth hosted in the Balingup Metamorphic Belt, within the highly prospective West Yilgarn Ni-Cu-PGE Province discovered by Chalice that hosts their Julimar discovery which is one of the largest greenfield Ni-Cu-PGE sulphide discoveries in recent history (*Refer Figure 3*). The two main prospects within the Project are Thor and Odin and both contain areas of potential Nickel-Copper-PGE prospectivity.

Thor is a 20km long ‘Julimar lookalike’ magnetic anomaly (*Refer Figure 4*) associated with chromium rich rocks indicative of mafic-ultramafic intrusions. An airborne EM survey by Venture identified 13 highly conductive anomalies within the southern 6.5km of the magnetic anomaly, of which only two have been tested by single holes in the maiden drill program (*Refer ASX announcement 21 February 2019*). The last hole drilled at Thor (TOR05) intersected 2.4m of Massive Sulfide averaging 0.5% Copper, 0.05% Nickel, 0.04% Cobalt and anomalous gold & palladium (*Refer ASX Announcement 21 February 2019*).

#### Odin Prospect

Initially was a newly discovered lithium target situated ~30 km south of Greenbushes, the world’s largest hard rock lithium mine (produces ~40% of the world’s lithium and is owned 51% by Tianqi Lithium and 49% Albemarle). Odin was discovered following a detailed geological mapping and surface geochemical program, which identified a potentially lithium bearing pegmatite system.

Following two phases of surface exploration a lithium target was identified which extended over 1.9 km of strike and was up to 150m wide. The geochemistry in the laterite is analogous to Greenbushes with significantly elevated levels of tin, tantalum and niobium. In addition to the geochemistry, mapping confirmed the presence of coarse ‘books’ of muscovite within the laterite which is considered indicative of pegmatites in a deeply weathered environment.

## 6. Review of Operations (continued)

Venture received co-funding from the Western Australian State Government to drill the first hole (ODD01) during the June 2018 quarter to test the lithium target. A total of 20 metres of pegmatites spread over several intervals was intersected within a mafic-ultramafic gneiss. The assay results received concluded that the pegmatites intersected in ODD01 did not contain significant lithium.

ODD01 also intersected disseminated Nickel-Copper sulfides within a mafic-ultramafic host unit, therefore realising the Company a new Nickel-Copper Target. The nickel-copper target was identified between two of the pegmatite zones intersected in the hole, the drilling intersected a continuous 21 metre zone of minor disseminated Nickel-Copper sulfides hosted within a mafic-ultramafic gneiss, which may represent part of a metamorphosed magmatic nickel-copper sulfide system. Hand-held XRF analyses verified the presence of elevated nickel and copper within these sulfides.

Venture's surface sampling shows significant nickel and copper geochemical anomalies within the mafic-ultramafic target units a few kilometres to the south-west and south-east of the first hole.

### Activities during the Year

- Chalice Mining Limited (ASX:CHN) ("Chalice") recommenced and then completed the ground Electromagnetic ("EM") survey on the Thor 'Julimar lookalike' target;
- The EM survey returned multiple new priority targets at Thor;
- Thor has a 20km long 'Julimar lookalike' magnetic anomaly associated with chromium rich rocks indicative of mafic-ultramafic intrusions;
- Chalice has met the expenditure for the first stage of the JV at the South West Ni-Cu-PGE Project;
- Subsequent to year end, Chalice has received results from the recently completed Auger Soil Geochemistry program that identified two new Ni-Cu-PGE targets. The new targets are located over interpreted ultramafic rocks, which contain coincident and untested airborne EM and magnetic anomalies at Thor (*Refer Figures 5 & 6*). These new targets have stronger coincidental magmatic indicator metals, including Ni, Cu, Co, Pd, Pt & Au, than the area covered by the recent ground EM;
- After recently identifying two new Nickel-Copper-PGE targets, Chalice has decided to commit to the second stage of the JV which requires a further \$2.5 million of expenditure over the next two years to earn a further 19% interest (for a total of 70%) in Venture's South West Project;
- The next stage for the project would include following up the new targets with ground EM and infill geochemical sampling, to prepare the recently generated targets for potential drill testing;
- Once the second stage of the earn-in is completed, Venture can then elect to either contribute 30% or dilute to a minimum of 10% JV interest, in which case the interest automatically reverts to a 1.25% NSR royalty (*for full JV earn-in terms refer to VMS and CHN ASX announcements 21 July 2020*).



6. Review of Operations (continued)

Figure 3 | Chalice's Julimar and Venture's South West JV Project locations over regional geology

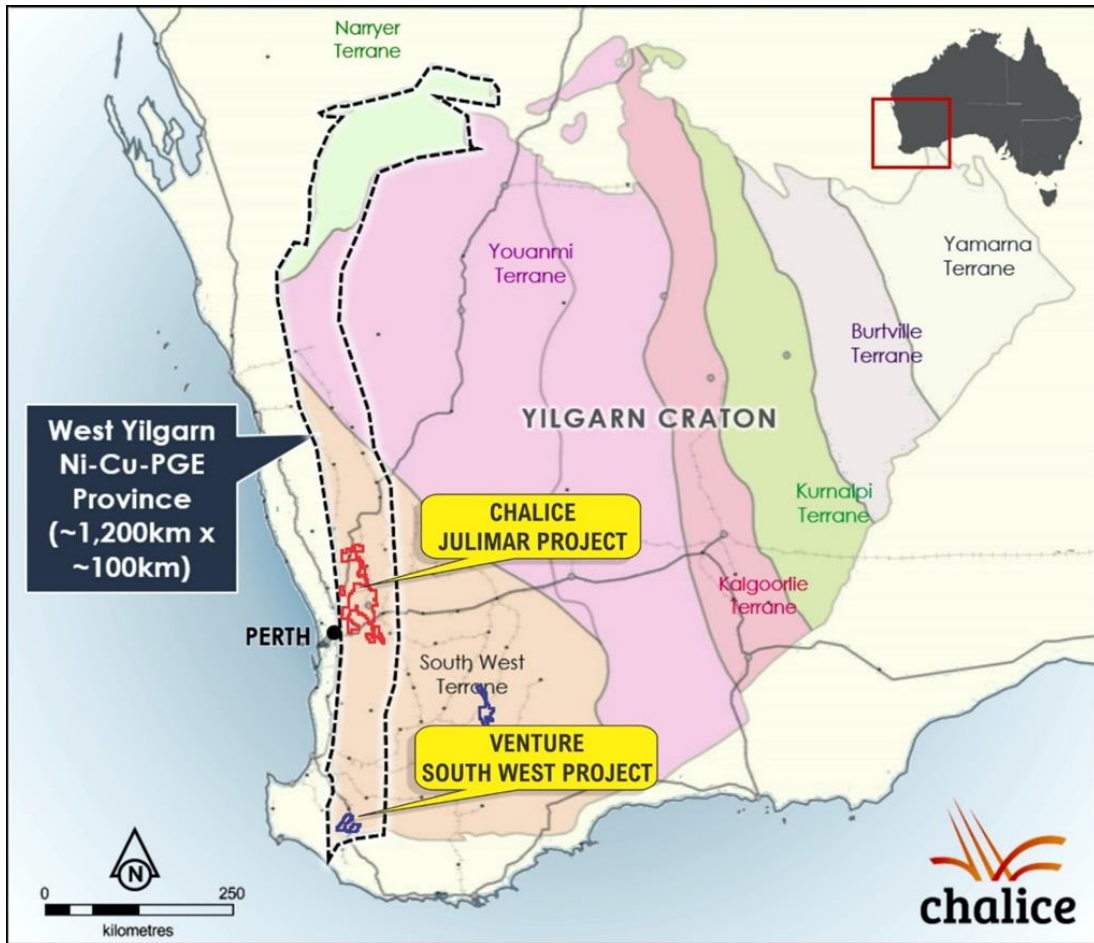
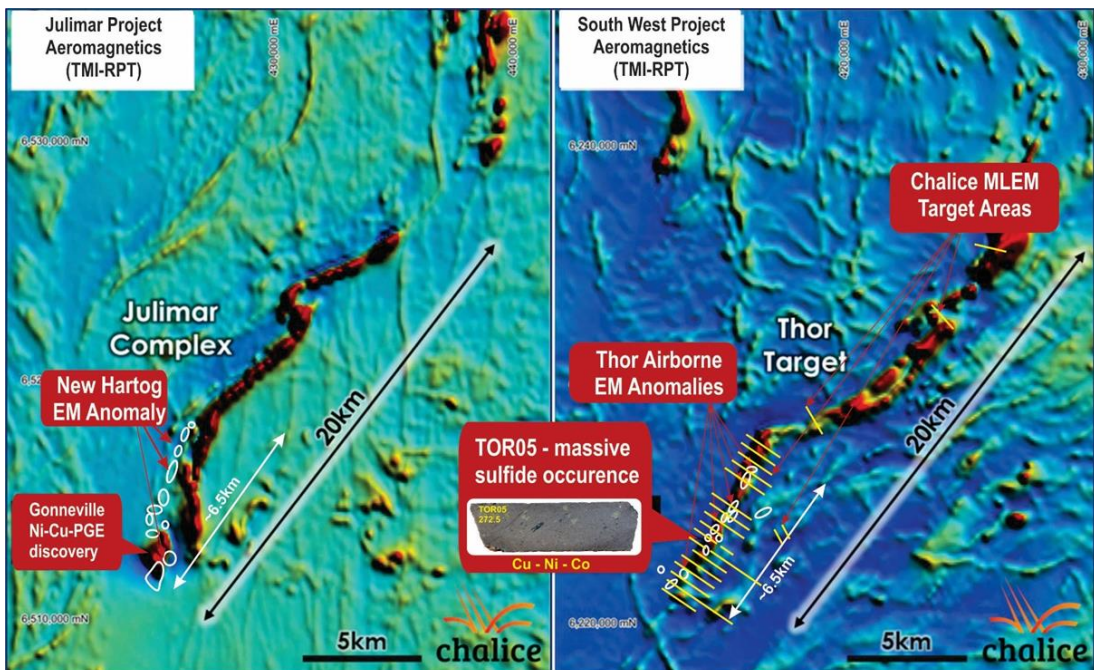


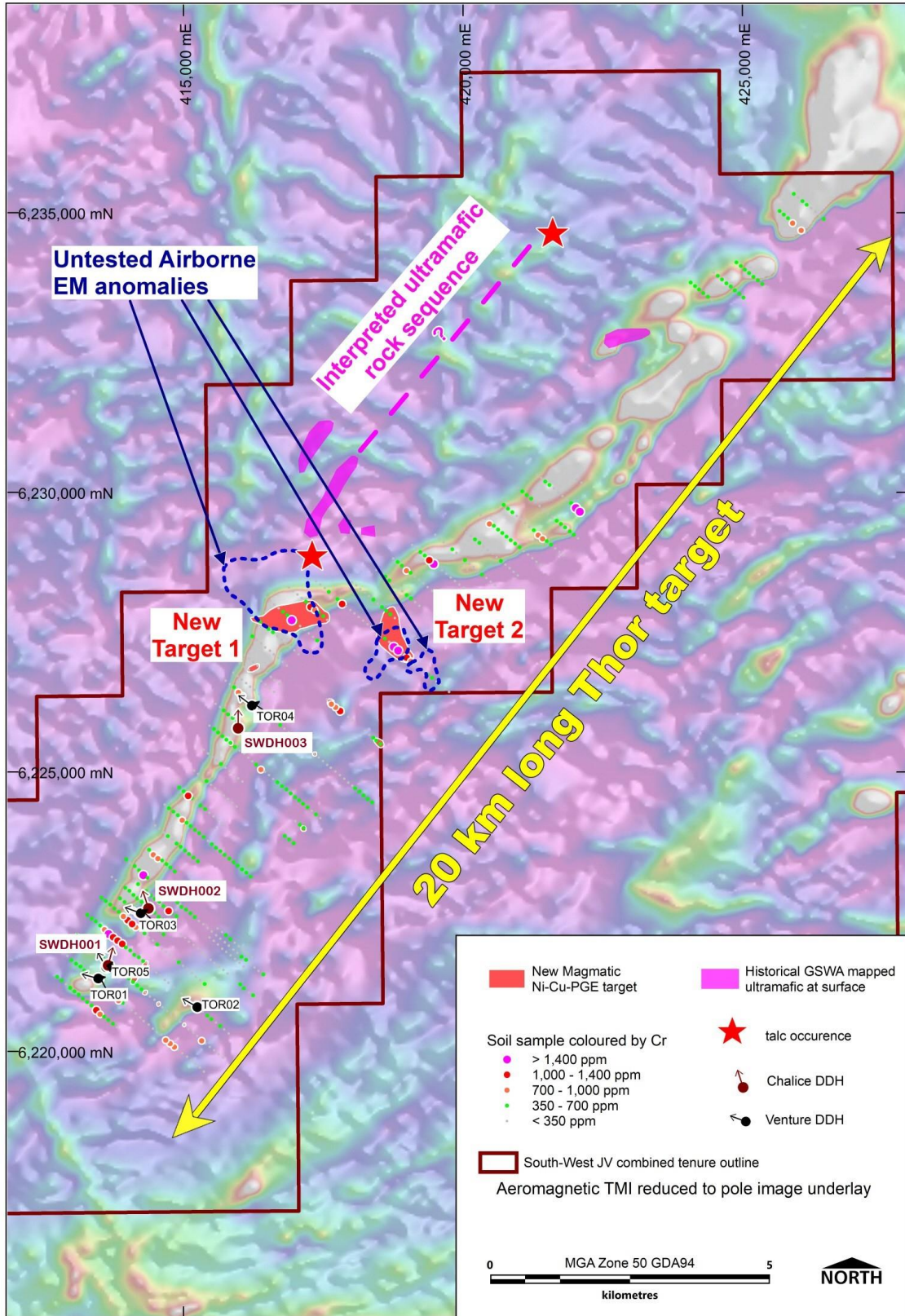
Figure 4 | Comparison of Chalice's Julimar and Venture's South West Projects magnetic signatures and EM anomalies at same scale





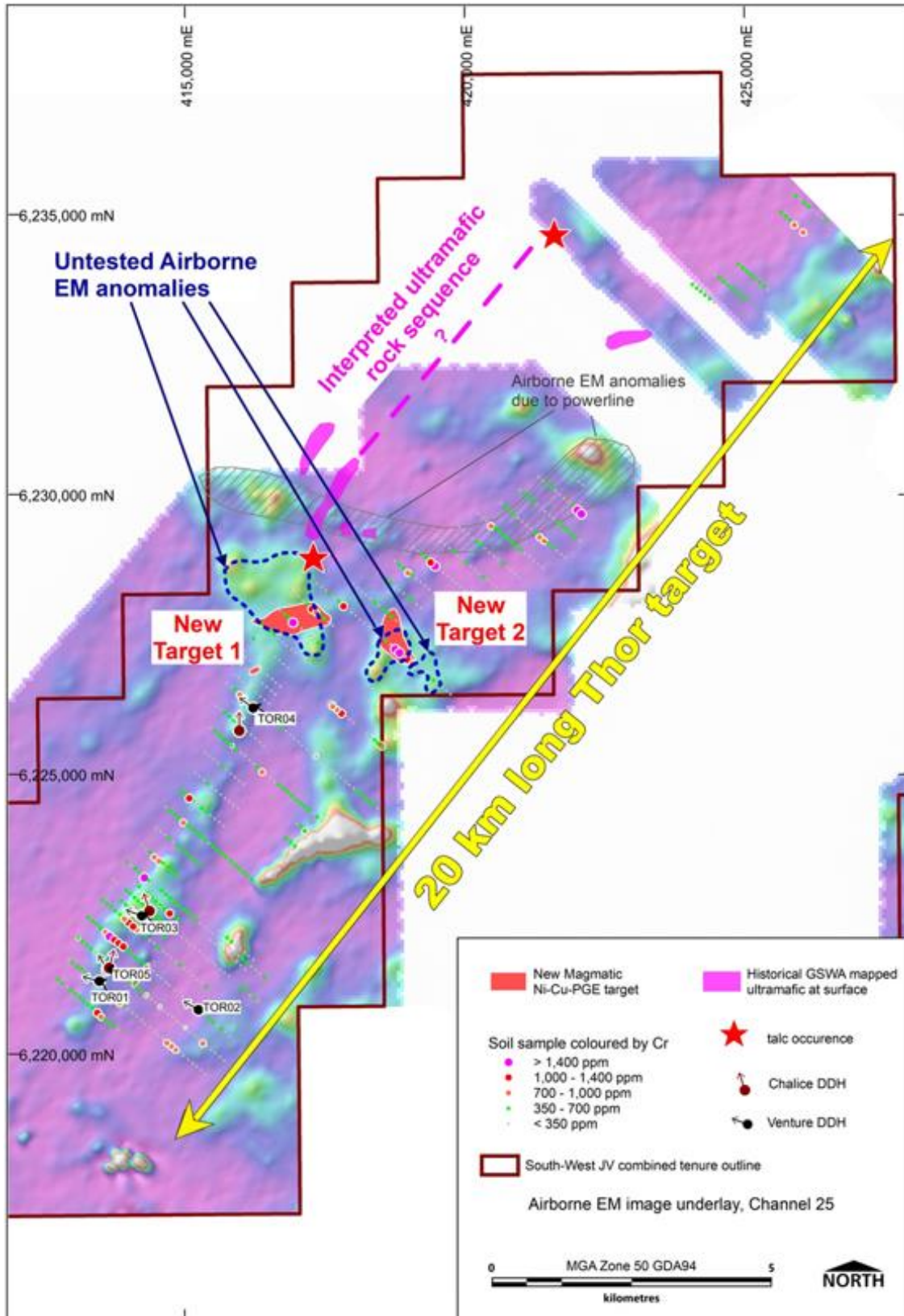
6. Review of Operations (continued)

Figure 5 | South West Project - Chalice's Auger Surface Geochemistry results on aeromagnetics over the Thor Target



6. Review of Operations (continued)

Figure 6 | South West Project - Chalice's Auger Surface Geochemistry results on airborne EM over the Thor Target





## 6. Review of Operations (continued)

### Golden Grove North Project, Zinc-Copper-Gold, Western Australia

#### Introduction

Venture has acquired a highly prospective land package (288 km<sup>2</sup>) less than 10 kilometers north of the Golden Grove Camp (Mine), currently Western Australia's premier location for VMS deposits. In 2002, Golden Grove had an endowment (resources and production) of 40.2mt @ 1.8% Cu, 0.9% Pb, 7.6% Zn, 103 g/t Ag & 0.8 g/t Au, and in early 2017 EMR Capital purchased the Mine for US\$210m.

The Golden Grove North project (approximately 370 km north-northeast of Perth) has not been the focus of VMS exploration for the last 25 years and it is the Company's goal to use a systematic exploration approach, utilising the latest techniques to explore for VMS style mineralisation.

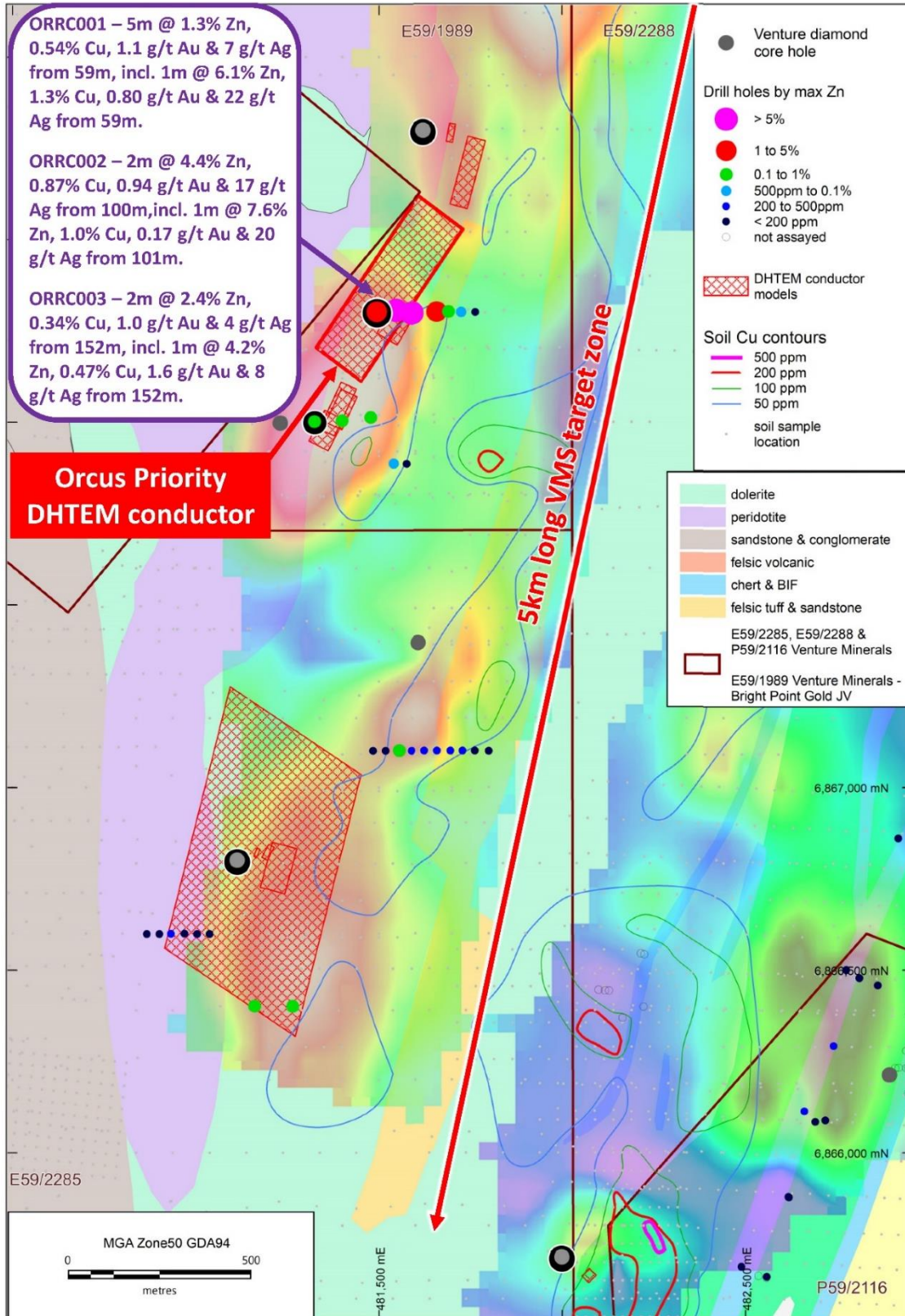
There are already several compelling target areas throughout the project, including a number of historic shallow gold drill intersections including 10m @ 1.4g/t gold from 16m; 8m @ 2.1g/t gold from 6m; 6m @ 2.3g/t gold from 6m; 3m @ 3.6g/t gold from 95m; and several strong gold and copper surface rock chip sampling results, including 9.4g/t gold, 7.4g/t gold and 6.6% copper; 6.2g/t gold, 5.7g/t gold, 4.0 g/t gold, 3.8g/t gold and 0.1% lead; 7.6% copper and 27g/t silver; 8.0% copper and 2.0% copper; and an extensive land position of interpreted lithologies prospective for VMS style mineralisation for over 25 strike kilometres that remain, due to cover, largely untested (*Refer Figure 12 and to ASX announcement 30 October 2018*).

#### Activities during the Year

- In October 2021, Venture announced the results of the recently completed Downhole Transient Electromagnetic (DHTEM) survey which delineated a large (500m long x 240m depth extent) conductor under High Grade Zinc-Copper-Gold drill intersections with assays of up to 7.6% Zn, 1.3% Cu, 2.2 g/t Au & 22g/t Ag, from the Maiden Drilling Program at the Orcus prospect at Golden Grove North, which confirmed a VMS System with all three holes on the first drill line returning strong zones of VMS style mineralisation (*Refer Figures 7 & 8*);
- 25 strike kilometres of a largely untested, prospective geological sequence for VMS style mineralisation with early exploration success yielding the Vulcan and Neptune VMS targets (*Refer Figure 9*);
- EM surveys at Vulcan have discovered four high priority VMS drill targets at and around the Copper-Gold Prospect along strike to the Golden Grove Zinc-Copper-Gold Mine;
- Plans going forward for the Company at Golden Grove North include preparing to drill the EM conductor below ORRC003 (*Refer Figures 7 & 8*), further surface mapping and sampling along the Neptune VMS Target Zone (*Refer to Figure 9*) to delineate drill targets and completion of a new ground EM survey to the west of Orcus (in progress as of 27<sup>th</sup> July 2022) to define potential new drill targets.

6. Review of Operations (continued)

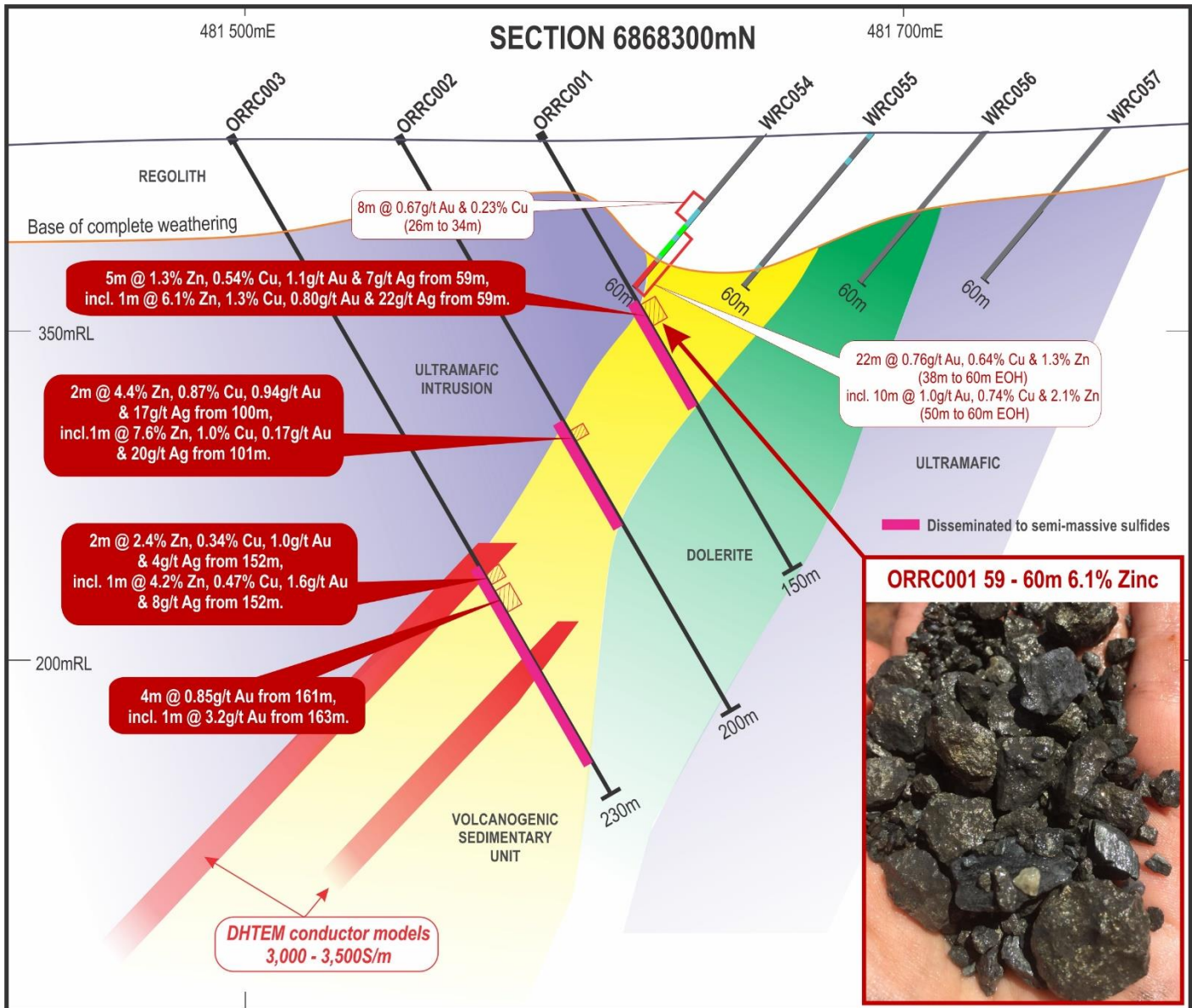
Figure 7 | Vulcan, Vulcan West, Vulcan North and Orcus priority VMS Drill Targets on a geological interpretation map with MLEM conductor models, maximum zinc in drill holes and copper in soil contours





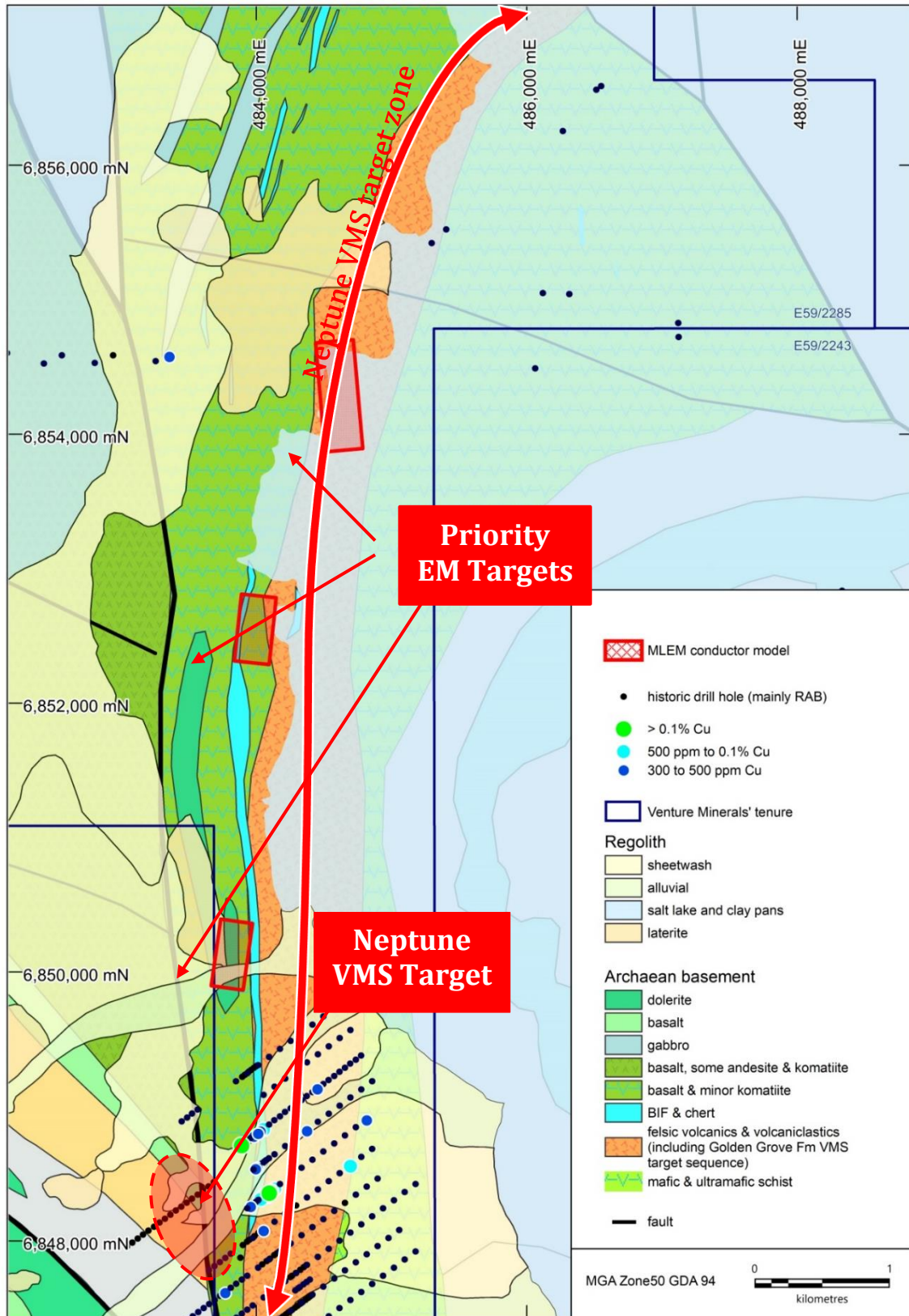
6. Review of Operations (continued)

Figure 8 | Cross Section through the Orcus Priority VMS drill target with DHTEM conductor models



6. Review of Operations (continued)

Figure 9 | Neptune VMS Target and Priority EM Targets on Interpreted and Surface Geology with Copper RAB Drill intersections and MLEM conductor models.



## 6. Review of Operations (continued)

### Kulin Project, Gold & Nickel-Copper-PGE, Western Australia

#### Introduction

The Company has one granted exploration licence (312 km<sup>2</sup>) located ~230 km south-southeast of Perth in Western Australia. Venture is focusing on the interpreted layered mafic-ultramafic intrusion near the town of Kulin, with Chalice's Julimar Ni-Cu-PGE discovery sitting along trend ~200km to the north-west in a similar geological sequence (*Refer Figure 10*). The layered mafic-ultramafic intrusion target sits within the granted exploration licence (E70/5077) which has 60 strike kms of interpreted ultramafic zones (*Refer to ASX announcement 26 February 2018*).

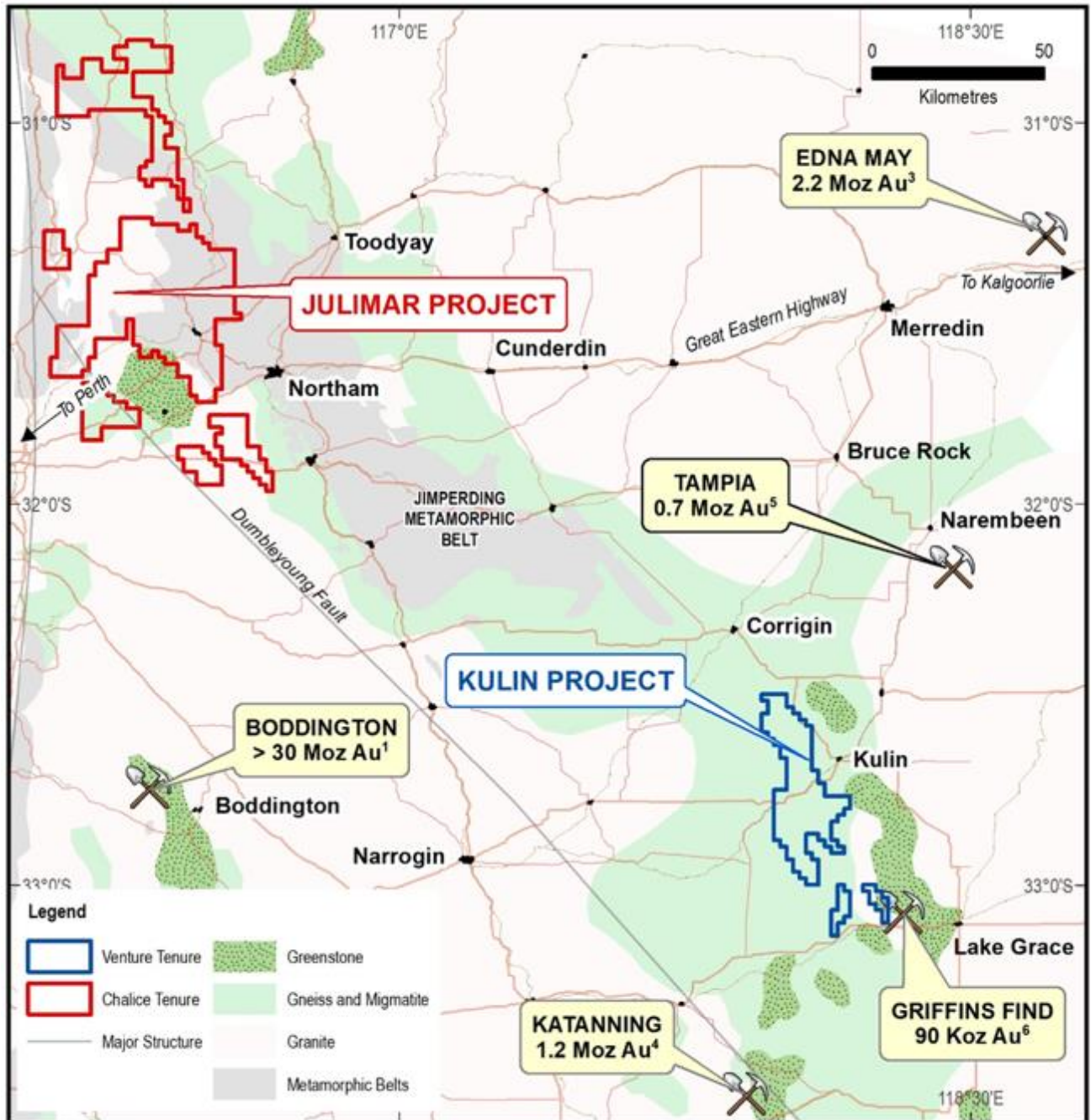
#### Activities during the Year

- During the period, Venture significantly expanded its Ni-Cu-PGE portfolio through the recent acquisition of highly prospective tenure at the Company's Kulin Project, bringing the total project area to 606km<sup>2</sup>. Within, the acquired tenure, Venture has secured two highly prospective 20 kilometre long interpreted mafic-ultramafic intrusive complexes sitting along strike of the Jimperding Metamorphic belt which hosts Chalice's Julimar Ni-Cu-PGE discovery (*Refer Figure 10*);
- Completion of 1,337 line km survey at Kulin over the two highly prospective 20 kilometre long interpreted mafic-ultramafic intrusive complexes is planned for the second half of this year, the outcomes of which may lead to drill testing in the future.



6. Review of Operations (continued)

Figure 10 | Kulin Project Location Map with surrounding Gold Deposits



Footnotes:

1. Figure 3 in Ausgold Limited ASX Announcement 1 November 2019 “Scoping Study shows potential for a new gold mine at Katanning”.
2. Aurum Analytics, Australian & New Zealand Gold Operations December Quarter 2019 - Final Report.
3. Endowment figure combining production up to 30<sup>th</sup> June 2019 sourced from [www.rameliusrresources.com.au](http://www.rameliusrresources.com.au), Catalpa Resources Annual Reports, Evolution Mining Annual Reports, and Ramelius Resources Annual Reports and resources are as stated in the Ramelius Resources Annual Report 2019.
4. Ausgold Limited ASX Announcement 1 November 2019 “Scoping Study shows potential for a new gold mine at Katanning”.
5. Explaurum Limited ASX Announcement 30 May 2018 “Tampia Feasibility Confirms Robust High-Margin Gold Project”.
6. Maxlow, J., 1990, Griffin’s Find Gold Deposit, Lake Grace in Geology of the Mineral Deposits of Australia and Papua New Guinea, Melbourne, Australia, The Australasian Institute of Mining and Metallurgy, p. 171-175.

## 6. Review of Operations (continued)

### Riley Iron Ore Mine, North West Tasmania

The 100% owned Riley Iron Ore Mine (Riley DSO Hematite Project) is located 10 km from the Mount Lindsay Deposit (Refer Figure 1) and occurs as a hematite rich pisolitic and cemented laterite. The deposit is all at surface, located less than 2 km from a sealed road that accesses existing port facilities.

A maiden resource statement of 2mt @ 57% Fe was defined in July 2012 under the JORC Code 2004, this was upgraded in August 2019 to meet the guidelines of the JORC Code 2012 (Refer Table 2).

**Table 2 | Resource Statement - Riley DSO Project**

Resource	Tonnes	Fe (%)	Fe (%) Calcined	SiO <sub>2</sub> (%)	Al <sub>2</sub> O <sub>3</sub> (%)	P (%)	S (%)	LOI (%)
Indicated	2.0mt	57	61	3.3	2.7	0.03	0.08	7.9

Note: Refer to ASX announcement on 19 June 2019.

Following completion of the July 2012 resource, Venture engaged independent mining engineers, Rock Team, to complete mining studies on the deposit and produce a reserve statement. With all the hematite resources at Riley located at or near surface, the study delivered a 90% conversion rate of resource to reserve under the JORC Code 2004, this was upgraded in 2019 to meet the guidelines of the JORC Code 2012 (Refer Table 3). The upgraded reserve figure focused on the same areas as per the mine plan for when mining commenced in 2014, resulting in an 80% conversion rate of resource to reserve.

**Table 3 | Reserve Statement - Riley DSO Project**

Reserve	Tonnes	Fe (%)	Fe (%) Calcined	SiO <sub>2</sub> (%)	Al <sub>2</sub> O <sub>3</sub> (%)	P (%)	S (%)	LOI (%)
Probable	1.6mt	57	61	3.9	2.8	0.03	0.07	7.1

Note: Refer to ASX announcement on 22 August 2019

### Activities during the Year

- Following suspension of operations at the Riley Mine (Refer to Figure 1) after the first shipment of Iron Ore was completed, Venture continues to review all key drivers of the economics of Project including; the Platts 62% Fe, the discount rates for the low grade Super Special Fines product and shipping prices;
- The Riley Mine remains on care and maintenance since undertaking the first shipment of Iron Ore in September 2021.

## 6. Review of Operations (continued)

### Livingstone DSO Hematite Project, North West Tasmania

Located only 3.5 km from the Mount Lindsay Tin-Tungsten Deposit, is the 100% owned Livingstone DSO Hematite Deposit (*Refer Figure 1*). Livingstone consists of an outcropping hematite cap overlaying a magnetite rich skarn. The hematite occurs from surface, is consistent in grade and located only 2 km from a sealed road, which accesses existing port facilities.

A maiden resource statement of 2.2mt @ 58% Fe was defined at Livingstone in 2011, which was followed by a positive and robust scoping study. Additional work later in 2011 included blending and sizing test work and preliminary mining studies, all of which delivered positive results.

During the second half of 2012 the Company completed a resource upgrade, which resulted in 100% of the inferred resources being converted to the indicated category (*Refer Table 3*).

**Table 3 | Resource Statement Livingstone DSO Project**

Resource	Tonnes	Fe (%)	Fe (%) Calcined	SiO <sub>2</sub> (%)	Al <sub>2</sub> O <sub>3</sub> (%)	P (%)	S (%)	LOI (%)
Indicated	<b>2.4mt</b>	<b>57</b>	61	5.4	1.9	0.07	0.05	7.0

*Note: Refer to ASX announcement on 26 July 2012.*

*This information was prepared and first disclosed under the JORC Code 2004. It has not been updated since to comply with the JORC Code 2012 on the basis that the information has not materially changed since it was last reported.*

### Activities during the Year

There was no field activity during the year.

### Corporate Governance and Internal Controls

Venture ensures that the Mineral Resource estimates are subject to appropriate levels of governance and internal controls. The Company periodically reviews the governance framework in line with the expansion and development of the business.

The Mineral Resource estimates are prepared internally by highly competent and qualified professionals. The Competent Person named by the Company is a Member of The Australasian Institute of Mining and Metallurgy. Internal reviews are carried out on the quality of the database and geological models prior to estimation.

## 7. Matters Subsequent to the End of the Financial Year

On 8 July 2022, the Company issued 7,500,000 fully paid ordinary shares at a deemed issue price of \$0.03 per share in lieu of employee entitlements.

Apart from the above, there were no other matter or circumstance has arisen since 30 June 2022 that has significantly affected, or may significantly affect the Company's operations, the results of those operations, or the Group's state of affairs in future financial years.

## 8. Likely Developments and Expected Results of Operations

The Board and management will be focusing on the Mount Lindsay Tin-Tungsten Project at a time when EV metals and critical minerals are at the forefront of the resources market. The Company continue to monitor iron ore commodity prices, global shipping prices and foreign currency markets in relation to its Riley Iron Ore Mine.

Exploration will continue at the Company's Kulin Gold and Nickel-Copper-PGE Project and the Golden Grove North Zinc-Copper-Gold project whilst Chalice continue to explore for a Julimar lookalike at Venture's South West Nickel-Copper-PGE Project.

## 9. Information on Directors and Company Secretaries

### Mr Mel Ashton

Qualifications  
Experience

### Independent Non-Executive Chairman

B.Com, FCA,

Mr Ashton holds a Bachelor of Commerce degree from the University of Western Australia, is a fellow of the Chartered Accountants Australia. Mr Ashton also holds a position on the Board of Directors of Quintis Limited.

### Interest in Securities

Fully Paid Ordinary Shares	6,480,741
0.1 cent options expiring 12 April 2023 subject to vesting conditions of share trading at \$0.10 or more based on a 10-day volume weighted average price	750,000
6.0 cents options expiring 11 December 2023	3,000,000

### Other Directorships

Bellavista Resources Limited (since November 2021)  
Labyrinth Resources Limited (since 9 June 2021)  
Aurora Labs Limited (since 22 January 2018)  
Donaco International Limited (since 9 December 2019 to 3 September 2020)  
Credit Intelligence Limited (17 May 2018 to 25 February 2020)

## 9. Information on Directors and Company Secretaries (continued)

<b>Mr Andrew Radonjic</b>	<b>Managing Director</b>	
Qualifications	BAppSc (Mining Geology), MSc (Mineral Economics), MAusIMM	
Experience	Mr Radonjic is a geologist and mineral economist with over 35 years of experience in mining and exploration, with a specific focus on gold and nickel, and was instrumental in three significant gold discoveries north of Kalgoorlie in Western Australia. As the Executive Director of Venture Minerals Limited, he co-led the discovery of the Mount Lindsay Tin-Tungsten-Magnetite deposits. Mr Radonjic was a Founding Director of Blackstone Minerals Limited until 2021.	
Interest in Securities	Fully Paid Ordinary Shares	12,419,906
	0.1 cent options expiring 12 April 2023 subject to vesting conditions of share trading at \$0.10 or more based on a 10-day volume weighted average price	1,750,000
	6.0 cents options expiring 11 December 2023	8,000,000
Other Directorships	Blackstone Minerals Limited (30 August 2016 to 12 November 2021) Fin Resources Limited (14 May 2018 to 30 November 2021) Codrus Minerals Limited (since 23 June 2021)	
<b>Mr John Jetter</b>	<b>Independent Non-Executive Director - appointed 8 June 2010</b>	
Qualifications	B.Law, B.Econ, INSEAD	
Experience	Mr Jetter has extensive international finance and M&A experience being the former Managing Director, CEO and head of investment banking of JPMorgan in Germany and Austria, and a member of the European Advisory Council, JPMorgan London. He has held various senior positions with JPMorgan during which time he focused his attention on major corporate clients and advised on some of Europe's largest corporate transactions.	
	Mr Jetter currently holds a number of other board positions including Non-Executive role in Otto Energy Limited.	
	Mr Jetter previously held positions as Chief Executive Officer of JPMorgan for Germany, Austria and Switzerland, Member of the Board of Conergy AG, Chairman of the Board of Rodenstock GMBH (Germany), Deputy Chairman of the Board of European Business School, and Chairman of the Finance Faculty Oestrich-Winkel, Germany.	
Interest in Securities	Fully Paid Ordinary Shares	5,805,913
	45 cent Options expiring 18 months after vesting date. Vesting date being successful financing for the Mt Lindsay Project.	1,000,000
	0.1 cent options expiring 12 April 2023 subject to vesting conditions of share trading at \$0.10 or more based on a 10-day volume weighted average price	2,500,000
	6.0 cents options expiring 11 December 2023	2,000,000
Other Directorships	Otto Energy Limited (since 12 December 2007) Peak Resources Limited (1 April 2015 to 15 January 2020)	



## **9. Information on Directors and Company Secretaries (continued)**

### **Company Secretary**

Jamie Byrde - BCom, CA.

Appointed - 16 March 2017

Mr Byrde is a Chartered Accountant with over 18 years' experience in corporate, audit and company secretarial matters. Previously Mr Byrde has held positions providing corporate advisory services, financial accounting/reporting and ASX/ASIC compliance management. Mr Byrde is also currently Company Secretary for Blackstone Minerals Limited (ASX: BSX) and Codrus Minerals Limited (ASX: CDR)

## 10. Remuneration Report (audited)

The Directors of Venture Minerals Limited are pleased to present your Company's 2022 remuneration report which sets out remuneration information for the Non-Executive Directors, Executive Directors and other key management personnel ("KMP").

The following sections are included with this report:

- A. Directors and key management personnel disclosed in this report
- B. Remuneration governance
- C. Use of remuneration consultants
- D. Group Performance, Shareholder Wealth and Executive Remuneration
- E. Non-Executive Director remuneration policy
- F. Voting and comments made at the company's 2021 Annual General Meeting
- G. Details of remuneration
- H. Details of share-based payments and bonuses
- I. Service Agreements
- J. Equity instruments held by key management personnel
- K. Loans to key management personnel
- L. Other transactions with key management personnel

### A. Directors and key management personnel disclosed in this report

#### Non-Executive Directors

Mr M Ashton	Non-Executive Chairman
Mr J Jetter	Non-Executive Director
Mr H Halliday	Non-Executive Director (Resigned on 26 November 2021)

#### Executive Directors

Mr A Radonjic	Managing Director
---------------	-------------------

#### Other key management personnel

Mr J Byrde	Company Secretary and Chief Financial Officer
------------	---

All of the key management personnel held their positions for the entire financial year and up to the date of this report unless otherwise disclosed.

### B. Remuneration governance

The Company has established a Remuneration Committee under a formal charter. The Remuneration Committee comprises of three Directors, the majority of which are independent.

The Remuneration Committee is responsible for reviewing and recommending the remuneration arrangements for the Executive and Non-Executive Directors and KMP each year in accordance with the Company's remuneration policy approved by the Board. This includes an annual remuneration review and performance appraisal for the Executive Directors and other executives, including their base salary, short-term incentives and long-term incentives, bonuses, superannuation, termination payments and service contracts.

Further information relating to the role of the Remuneration Committee can be found within the Corporate Governance Report on the Company's website at [www.ventureminerals.com.au](http://www.ventureminerals.com.au).

## **10. Remuneration Report (audited) cont.**

### **C. Use of remuneration consultants**

The Company has not engaged or contracted remuneration consultants during the financial year.

### **D. Group Performance, Shareholder Wealth and Executive Remuneration**

The remuneration policy has been tailored to increase goal congruence between shareholders, directors and executives. This has been achieved by the issue of performance options to directors, executives and other key management personnel, at the discretion of the Board of Directors. The performance options are issued under the Employee Incentive Scheme and based on a mixture of short, medium and long-term incentive options. This structure rewards executives for both short-term and long-term shareholder wealth development.

### **E. Non-executive director remuneration policy**

The Board policy is to remunerate Non-Executive Directors at market rates for comparable companies for time, commitment and responsibilities. Fees for Non-Executive Directors are not linked to the performance of the Group.

In determining competitive remuneration rates, the Board review local and international trends among comparative companies and industry generally.

Typically, Venture Minerals Limited will compare Non-Executive Remuneration to companies with similar market capitalisations in the exploration and resource development business group. These ongoing reviews are performed to confirm that non-executive remuneration is in line with market practice and is reasonable in the context of Australian executive reward practices.

In prior years, the Company engaged remuneration consultants to review the remuneration and incentives offered to the Company's Board to benchmark against its peers to determine competitiveness of the Company's current pay arrangements. Following this review and keeping in line with its remuneration policy the Board agreed to keeping the Chair and Non-Executive Director's fees within the P50th quartile of the market peer analysis performed.

Further to ongoing reviews, the maximum aggregate amount of fees that can be paid to non-executive directors is \$500,000 as per the Company's constitution. No change is being requested for approval by shareholders at the Annual General Meeting.

### **F. Voting and comments made at the company's 2021 Annual General Meeting**

The Company received votes against its Remuneration Report, representing greater than 25% of the votes cast by persons entitled to vote. In other words, Venture Minerals Limited received its "First Strike" against its 2021 Remuneration Report at the Annual General Meeting (AGM) held on 30 November 2021.

In these circumstances, the Corporations Act 2001 requires Venture to include in this year's Remuneration Report, an explanation of the Board's proposed action in response to that First Strike, or alternatively, if the Board does not propose any action, the Board's reason for such inaction.

Following actions taken since the First Strike on the 2021 Remuneration Report include:

- Since the AGM, a salary freeze is in place for Directors.
- No further performance options or incentives have been issued to Directors since December 2020.
- The board will also continue to ensure future incentives and remuneration policy frameworks are in accordance with the 4th Edition of the Corporate Governance Principles, Principle 8, Remunerate fairly and responsibly.

### **G. Details of Remuneration**

Details of the remuneration of the Directors and key management personnel of the group of Venture Minerals Limited are set out in the following table. There have been no changes to the below named key management personnel since the end of the reporting period unless otherwise noted.

**10. Remuneration Report (audited) cont.**

	Short Term Benefits					Post employment benefits	Long Term Benefits	Non-Cash	Total \$
	Cash Salary & Fees	Incentives	Consulting Fees	Annual Leave Entitlement <sup>D</sup>	Other <sup>B</sup>	Super-annuation	Long Service Leave Entitlement <sup>D</sup>	Long Term Incentives <sup>A</sup>	
<b>2022</b>									
<i>Non-Executive Directors</i>									
Mr M Ashton	80,000	-	-	-	18,150	-	-	-	98,150
Mr H Halliday <sup>C</sup>	25,385	-	27,498	-	18,150	-	-	-	71,033
Mr J Jetter	55,000	-	-	-	18,150	-	-	-	73,150
<i>Executive Director</i>									
Mr A Radonjic	285,000	-	-	26,921	18,150	28,500	32,670	-	391,241
<i>Other Key Management Personnel</i>									
Mr J Byrde	69,030	-	-	-	18,150	6,836	-	-	94,016
<b>Total Remuneration</b>	<b>514,415</b>	<b>-</b>	<b>27,498</b>	<b>26,921</b>	<b>90,750</b>	<b>35,336</b>	<b>32,670</b>	<b>-</b>	<b>727,590</b>
<b>2021</b>									
<i>Non-Executive Directors</i>									
Mr M Ashton	73,331	-	-	-	12,947	-	-	62,150	148,428
Mr H Halliday	34,615	-	55,000	-	12,947	-	-	103,584	206,146
Mr J Jetter	51,667	-	-	-	12,947	-	-	41,433	106,047
<i>Executive Director</i>									
Mr A Radonjic	256,871	-	-	-	12,947	24,403	4,604	165,734	464,559
<i>Other Key Management Personnel</i>									
Mr J Byrde	74,067	-	-	-	12,947	7,036	-	38,663	132,713
<b>Total Remuneration</b>	<b>490,551</b>	<b>-</b>	<b>55,000</b>	<b>-</b>	<b>64,735</b>	<b>31,439</b>	<b>4,604</b>	<b>411,564</b>	<b>1,057,893</b>

A: The fair value of the options is calculated at the date of grant using a Black-Scholes model. Refer to Section 10(H) for further details of options issued.

B: Other amounts includes the Directors and Officers insurance of \$90,750 (2021: \$64,735) in total.

C: Mr Halliday resigned on 26 November 2021. Mr Halliday was paid \$154,233 for annual leave and long service leave entitlements on his resignation.

D: These balances represent the movement in Provision of Annual and Long Service Leave Entitlements during the year.

## 10. Remuneration Report (audited) cont.

### H. Details of Share Based Payments and Bonuses

There were no bonuses issued or paid during the year.

Details of options over ordinary shares in the Company provided as remuneration to each Director of Venture Minerals Limited and each of the key management personnel of the parent entity and the Group are set out below. When exercisable, each option is convertible into one ordinary share. The tables show the percentages of the options granted that vested and forfeited during the year. Further information on the options is set out in the note 26 to the financial statements.

Details of the options issued and exercised during the financial are as follows:

	Granted No.	Value of options granted during the year \$	Total Remuneration Represented by Options	Exercised No.	Other changes No	Lapsed No.
<b>30 June 2022</b>						
Non-Executive Directors						
Mr M Ashton	-	-	-	(500,000) <sup>B</sup>	-	-
Mr H Halliday <sup>A</sup>	-	-	-	-	-	-
Mr J Jetter	-	-	-	-	-	-
Executive Director						
Mr A Radonjic	-	-	-	-	-	-
Other key management personnel						
Mr J Byrde	-	-	-	-	-	-
<b>30 June 2021</b>						
Non-Executive Directors						
Mr M Ashton	3,000,000	62,150	41.9%	(1,250,000) <sup>C</sup>	-	-
Mr H Halliday	5,000,000 <sup>D</sup>	103,584	50.2%	(8,000,000) <sup>E</sup>	-	-
Mr J Jetter	2,000,000	41,433	39.1%	(1,030,000) <sup>F</sup>	-	-
Executive Director						
Mr A Radonjic	8,000,000	165,734	35.7%	(1,750,000) <sup>G</sup>	-	-
Other key management personnel						
Mr J Byrde	2,500,000	38,663	29.1%	(750,000) <sup>H</sup>	-	-

A Mr Halliday resigned on 26 November 2021.

B The options exercised on 16 July 2021 had a market value of \$62,500 for Mr Ashton.

C The options exercised on 3 July 2020 had a market value of \$32,500 for Mr Ashton.

D The 5,000,000 options issued to Mr Halliday during the year were in his capacity as a consultant as per Management Consulting Agreement.

E The options exercised on various dates (1e 10 July 2020 and 14 May 2021) had a total market value of \$823,500 for Mr Halliday.

F The options exercised on 28 August 2020 had a market value of \$31,930 for Mr Jetter.

G The options exercised on 28 August 2020 had a market value of \$54,250 for Mr Radonjic.

H The options exercised on 14 May had a market value of \$90,000 for Mr Byrde.

## 10. Remuneration Report (audited) cont.

### H. Details of Share Based Payments and Bonuses (continued)

Director/Executive	Issue Date	Expiry Date	% Vested in Year	Exercise Price	Number of Options
<b>30 June 2022</b>					
Mr M Ashton	-	-	-	-	-
Mr H Halliday <sup>A</sup>	-	-	-	-	-
Mr A Radonjic	-	-	-	-	-
Mr J Jetter	-	-	-	-	-
Mr J Byrde	-	-	-	-	-
<b>30 June 2021</b>					
Mr M Ashton	11/12/2020	11/12/2023	100%	0.06	3,000,000
Mr H Halliday	11/12/2020	11/12/2023	100%	0.06	5,000,000
Mr A Radonjic	11/12/2020	11/12/2023	100%	0.06	8,000,000
Mr J Jetter	11/12/2020	11/12/2023	100%	0.06	2,000,000
Mr J Byrde	11/12/2020	11/12/2023	100%	0.06	2,500,000

A Mr Halliday resigned on 26 November 2021.

The assessed fair value at grant date of options granted is allocated equally over the period from grant date to estimated vesting date, and the amount is included in the remuneration tables above. Fair values at grant date are determined using a Black-Scholes option pricing model that takes into account the exercise price, the term of the option, the share price at grant date and expected share price volatility, the expected dividend yield and the risk-free rate for the term of the option.

### I. Service Agreements

Remuneration and other key terms of employment for the Executives, Non-Executives and Other Key Management Personnel of Venture Minerals Limited are formalised in executive service agreements. Termination benefits are within the limits set by the Corporations Act 2001. Major provisions of the agreements relating to remuneration are set out below:

Name	Term of agreement	Base salary <sup>A</sup>	Other <sup>B</sup>	Termination benefit
Mr M Ashton Non-Executive Chairman	No fixed term	\$80,000	-	No termination benefits
Mr A Radonjic Managing Director	No fixed term	\$313,500	-	6 months
Mr H Halliday <sup>C</sup> Non-Executive Director	No fixed term	\$55,000	\$55,000	3 months
Mr J Jetter Non-Executive Director	No fixed term	\$55,000	-	No termination benefits
Mr J Byrde CFO/Company Secretary	No fixed term	\$73,333	-	3 months

A Includes 10.0% superannuation.

B Management Consulting Agreement.

C Mr Halliday resigned on 26 November 2021.

## 10. Remuneration Report (audited) cont.

### J. Equity instruments held by key management personnel

The tables below show the number of:

- (I) options over ordinary shares in the Company, and
- (II) shares held in the Company

that were held during the financial year by key management personnel of the Group, including their close family members and entities related to them.

#### (I) Option holdings

	Balance at start of the year	Granted as remuneration	Exercised	Other changes	Balance at end of the year	Vested and exercisable
<b>30 June 2022</b>						
Directors of Venture Minerals Limited						
Mr M Ashton	4,250,000	-	(500,000)	-	3,750,000	3,750,000
Mr A Radonjic	9,750,000	-	-	-	9,750,000	9,750,000
Mr H Halliday <sup>A</sup>	-	-	-	-	-	-
Mr J Jetter	5,500,000	-	-	-	5,500,000	5,500,000
Other key management personnel						
Mr J Byrde	2,500,000	-	-	-	2,500,000	2,500,000
<b>30 June 2021</b>						
Directors of Venture Minerals Limited						
Mr M Ashton	2,500,000	3,000,000	(1,250,000)	-	4,250,000	4,250,000
Mr A Radonjic	3,500,000	8,000,000	(1,750,000)	-	9,750,000	9,750,000
Mr H Halliday	3,000,000	5,000,000	(8,000,000)	-	-	-
Mr J Jetter	4,530,000	2,000,000	(1,030,000)	-	5,500,000	4,500,000
Other key management personnel						
Mr J Byrde	750,000	2,500,000	(750,000)	-	2,500,000	2,500,000

A Mr Halliday resigned on 26 November 2021.

## 10. Remuneration Report (audited) cont.

### J. Equity instruments held by key management personnel (continued)

#### (II) Share holdings

The number of shares in the Company held during the financial year by each Director of Venture Minerals Limited and other key management personnel of the Group, including their personally related parties, are set out below. There were no shares granted during the year as compensation.

2022	Balance at the start of the year	Received on exercise of options	Other changes	Balance at the end of the year
Directors of Venture Minerals Limited				
Mr M Ashton	6,480,741	500,000	(500,000)	6,480,741
Mr A Radonjic	11,775,741	-	644,165	12,419,906
Mr H Halliday <sup>A</sup>	18,205,241	-	(18,205,241)	-
Mr J Jetter	5,376,470	-	429,443	5,805,913
Other key management personnel				
Mr J Byrde	-	-	277,778	277,778

A Mr Halliday resigned on 26 November 2021.

2021	Balance at the start of the year	Received on exercise of options	Other changes	Balance at the end of the year
Directors of Venture Minerals Limited				
Mr M Ashton	4,263,000	1,250,000	967,741	6,480,741
Mr A Radonjic	9,058,000	1,750,000	967,741	11,775,741
Mr H Halliday	15,737,500	8,000,000	(5,532,259)	18,205,241
Mr J Jetter	3,862,600	1,030,000	483,870	5,376,470
Other key management personnel				
Mr J Byrde	750,000	750,000	(1,500,000)	-

### K. Loans to key management personnel

There were no loans made to Directors and other key management personnel of the Group, including their close family members.

### L. Other transactions with key management personnel

Director, Mr Radonjic is a former Non-Executive Director of Blackstone Minerals Limited until 12 November 2021 which shared office and administration service costs on normal commercial terms and conditions. Mr Halliday (resigned November 2021) is Non-Executive Chairman of Blackstone Minerals which shares either office and/or administration service costs on normal commercial terms and conditions.

Mr Radonjic is a Director of Onedin Enterprises Pty Ltd which provide GIS services on an arm's length basis on normal commercial terms.



## 10. Remuneration Report (audited) cont.

### L. Other transactions with key management personnel (continued)

Aggregate amounts of each of the above types of other transactions with key management personnel of Venture Minerals Limited:

	2022 \$	2021 \$
<b>(i) Recharges to KMP related entities</b>		
Recharge of rent and shared office costs		
Recharges to Alicanto Minerals Limited	-	2,369
Recharges to Blackstone Minerals Limited	3,899	163,939
Payments to Codrus Minerals Limited	54,745	-
<b>(ii) Purchases from KMP related entities</b>		
Rent of office building and shared office costs		
Payments to Blackstone Minerals Limited	63,952	281,798
Payments to Onedin Enterprises Pty Ltd	7,530	8,816
Payments to Codrus Minerals Limited	21,696	-

**End of remuneration report.**

## 11. Shares under Option

Unissued ordinary shares of Venture Minerals Limited under option at the date of this report are as follows:

Date options granted	Expiry Date	Exercise Price	Number under Option
5 Dec 18	12 Apr 23	0.1 cents	7,000,000
15 Aug 12	See "note A"	50.0 cents	2,000,000
15 Aug 12	See "note B"	55.0 cents	2,500,000
28 Sep 12	See "note C"	45.0 cents	1,000,000
16 Oct 20	16 Oct 22	5.2 cents	13,551,618
11 Dec 20	11 Dec 23	6.0 cents	19,900,000
14 Jan 2022	14 Jan 24	5.4 cents	14,444,445

No option holder has any right under the options to participate in any other share issue of the Company or any other entity.

Note A: The options shall expire 18 months after the vesting date being the date upon which the Company successfully completes its first shipment of DSO product.

Note B: The options shall expire 18 months after the vesting date being the date upon which the Company has made a decision to proceed with mining tin in Tasmania.

Note C: The options shall expire 18 months after the vesting date being the date upon which the Company successfully obtains financing for the Mt Lindsay Tin-Tungsten Project.

## 11. Shares under Option cont.

### Shares issued on the exercise of options

The following ordinary shares were issued during the year ended 30 June 2022 and up to the date of this report on the exercise of options granted:

Date options granted	Exercise date	Exercise Price	Number of shares
24 December 2015	16 July 2021	0.1 cents	500,000
16 October 2020	30 July 2021	5.2 cents	4,556,451

## 12. Insurance of Officers

During the financial year, Venture Minerals Limited paid a premium of \$90,750 (2021: \$64,735) to insure the Directors and secretary of the Company.

The liabilities insured are legal costs that may be incurred in defending civil or criminal proceedings that may be brought against the officers in their capacity as officers of entities in the group, and any other payments arising from liabilities incurred by the officers in connection with such proceedings. This does not include such liabilities that arise from conduct involving a wilful breach of duty by the officers or the improper use by the officers of their position or of information to gain advantage for themselves or someone else or to cause detriment to the Company.

## 13. Meetings of Directors

The number of Directors' meetings (including committees) held during the financial year that each Director who held office during the financial year were eligible to attend and the number of meetings attended by each Director are:

Director	Full meetings of Directors		Remuneration Committee meetings	
	Number Eligible to Attend	Meetings Attended	Number Eligible to Attend	Meetings Attended
Mr M Ashton	6	6	-	-
Mr A Radonjic	6	6	-	-
Mr H Halliday	4	4	-	-
Mr J Jetter	6	6	-	-

The Company does not have a formally constituted audit committee as the Board considers that the Company's size and type of operation do not warrant such a committee as all members of the Board are involved in audit agenda items and discussions thereon.

## 14. Environmental Regulation

The Group's activities are subject to the relevant environmental protection legislation (Commonwealth and State) in relation to its exploration, development and future mining activities. The directors are not aware of any environmental law that is not being complied with.

## 15. Proceedings on behalf of the Company

The Company has joined a court proceeding involving the Tarkine National Coalitions and the Director, Environmental Protection Authority of Tasmania (EPA). The case is against the approval from the EPA to allow 24-hour trucking from the Riley Iron Ore mine to the Port of Burnie. The mine is currently on care and maintenance and results of the proceedings are unknown. The Company is not a party to any further proceedings.

## 16. Auditor's Independence Declaration & Non-Assurance Services

The lead auditor's independence declaration for the year ended 30 June 2022 has been received and can be found on page 35 of the Directors' report.

There was no (2021: Nil) engagement of non-audit services were provided to the Company during or since the end of the financial year.

The Auditor's remuneration is disclosed in Note 5.

Signed in accordance with a resolution of the Board of Directors.



**Andrew Radonjic**  
**Managing Director**

Perth, Western Australia, 30 September 2022

## Competent Person's Statement

The information in this report that relates to Exploration Results, Exploration Targets and Minerals Resources is based on information compiled by Mr Andrew Radonjic, a fulltime employee of the company and who is a Member of The Australasian Institute of Mining and Metallurgy. Mr Andrew Radonjic has sufficient experience which is relevant to the style of mineralisation and type of deposits under consideration and to the activity which he is undertaking to qualify as a Competent Person as defined in the 2012 Edition of the 'Australasian Code for Reporting of Exploration Results, Mineral Resources and Ore Reserves'. Mr Andrew Radonjic consents to the inclusion in the report of the matters based on his information in the form and context in which it appears.

The information in this report that relates to Mineral Resources for the Mount Lindsay and Livingstone Projects is based on information compiled by Mr Andrew Radonjic, a fulltime employee of the company and who is a Member of The Australasian Institute of Mining and Metallurgy. Mr Andrew Radonjic has sufficient experience which is relevant to the style of mineralisation and type of deposits under consideration and to the activity which he is undertaking to qualify as a Competent Person as defined in the 2004 and 2012 Edition of the 'Australasian Code for Reporting of Exploration Results, Mineral Resources and Ore Reserves'. Mr Andrew Radonjic consents to the inclusion in the report of the matters based on his information in the form and context in which it appears. This information was prepared and first disclosed under the JORC Code 2004. It has not been updated since to comply with the JORC Code 2012 on the basis that the information has not materially changed since it was last reported.

The information in this report that relates to Ore Reserves is based on information compiled by Mr Peter George, who is a Member of the Australasian Institute of Mining and Metallurgy. Mr George is an independent consultant. Mr George has sufficient experience which is relevant to the style of mineralisation and type of deposits under consideration and to the activity which he is undertaking to qualify as a Competent Person as defined in the 2012 Edition of the 'Australasian Code for Reporting of Exploration Results, Mineral Resources and Ore Reserves'. Mr George consents to the inclusion in the report of the matters based on his information in the form and context in which it appears.

Notes: All material assumptions and technical parameters underpinning the Minerals Resource and Reserve estimate referred to within previous ASX announcements continue to apply and have not materially changed since last reported. The company is not aware of any new information or data that materially affects the information included in this announcement.



PO Box 1908  
West Perth WA 6872  
Australia

Level 2, 40 Kings Park Road  
West Perth WA 6005  
Australia

Tel: +61 8 9481 3188  
Fax: +61 8 9321 1204

ABN: 84 144 581 519  
www.stantons.com.au

30 September 2022

The Directors  
Venture Minerals Limited  
Level 3, 24 Outram Street  
West Perth, WA 6005

Dear Directors

**RE: VENTURE MINERALS LIMITED**

In accordance with section 307C of the *Corporations Act 2001*, I am pleased to provide the following declaration of independence to the directors of Venture Minerals Limited.

As the Audit Director for the audit of the financial statements of Venture Minerals Limited for the year ended 30 June 2022, I declare that to the best of my knowledge and belief, there have been no contraventions of:

- (i) the auditor independence requirements of the *Corporations Act 2001* in relation to the audit; and
- (ii) any applicable code of professional conduct in relation to the audit.

Yours sincerely

**STANTONS INTERNATIONAL AUDIT AND CONSULTING PTY LTD**  
(Authorised Audit Company)

A handwritten signature in blue ink that reads 'Martin Michalik'.

**Martin Michalik**  
Director

## Contents

Consolidated Statement of Profit or Loss and Other Comprehensive Income	37
Consolidated Statement of Financial Position	38
Consolidated Statement of Changes in Equity	39
Consolidated Statement of Cash Flows	40
Notes to the Consolidated Financial Statements	41
Directors' Declaration	69
Independent Auditor's Report	70

These financial statements cover Venture Minerals Limited as a consolidated entity consisting of Venture Minerals Limited and the entities it controlled from time to time during the financial year ('group' or 'consolidated entity'). The financial statements are presented in the Australian currency.

Venture Minerals Limited is a Company limited by shares, incorporated and domiciled in Australia. Its registered office and principal place of business is:

Venture Minerals Limited  
Level 3, 24 Outram Street  
West Perth WA 6005

A description of the nature of the consolidated entity's operations and its principal activities is included in the review of operations and activities from pages 4 to 24 in the Directors' report, which is not part of these financial statements.

The financial statements were authorised for issue by the Directors on 30 September 2022. The Company has the power to amend and reissue the financial statements.

Through the use of the internet, we have ensured that our corporate reporting is timely, complete, and available globally at minimum cost to the Company. All press releases, financial reports and other information are available on our website: [www.ventureminerals.com.au](http://www.ventureminerals.com.au).

**Consolidated Statement of Profit or Loss and Other Comprehensive Income  
 For the Year Ended 30 June 2022**

	Notes	Consolidated	
		2022	2021
		\$	\$
<b>Continuing Operations</b>			
Revenue from continuing operations	3(a)	8,090	6,220
Other income	3(b)	5,066	51,439
Administrative costs		(797,350)	(497,064)
Consultancy expenses		(760,461)	(359,269)
Employee benefits expense	4(a)	(829,871)	(567,570)
Share based payment expenses	26	-	(560,889)
Occupancy expenses	4(b)	(88,545)	(75,101)
Compliance and regulatory expenses		(139,583)	(173,905)
Insurance expenses		(402,823)	(147,425)
Depreciation expense	4(c)	(81,305)	(27,317)
Finance costs	4(d)	(32,300)	(25,907)
Interest expense on lease liabilities	4(d)	(1,840)	-
Exploration Expenditure	10	(3,605,993)	(2,938,164)
Impairment of property, plant and equipment	9	(4,558,736)	-
Impairment of Mine Development Expenditure	11	(6,471,588)	(6,435,127)
<b>Loss before income tax</b>		<b>(17,757,239)</b>	<b>(11,750,079)</b>
Income tax (expense)/benefit	6	-	-
<b>Loss attributable to owners</b>		<b>(17,757,239)</b>	<b>(11,750,079)</b>
<b>Other comprehensive income:</b>			
Items that may be reclassified to profit or loss		-	-
Items that will not be classified to profit or loss		-	-
<b>Total comprehensive loss attributable to owners</b>		<b>(17,757,239)</b>	<b>(11,750,079)</b>
Basic loss per share (cents per share)	20	(1.17)	(1.07)
Diluted loss per share (cents per share)		N/A	N/A

*The above consolidated statement of profit or loss and other comprehensive income should be read in conjunction with the accompanying notes.*

**Consolidated Statement of Financial Position**  
As at 30 June 2022

	Notes	Consolidated	
		30 June 2022	30 June 2021
		\$	\$
<b>Current Assets</b>			
Cash and cash equivalents	7	9,430,190	9,487,773
Trade and other receivables	8	285,692	735,341
<b>Total Current Assets</b>		<b>9,715,882</b>	<b>10,223,114</b>
<b>Non-Current Assets</b>			
Trade and other receivables	8	952,758	937,866
Property, plant and equipment	9	125,131	4,569,458
Mine development expenditure	11	-	-
Exploration and evaluation expenditure	10	275,000	275,000
Right-of-Use assets	12	66,158	-
<b>Total Non-Current Assets</b>		<b>1,419,047</b>	<b>5,782,324</b>
<b>Total Assets</b>		<b>11,134,929</b>	<b>16,005,438</b>
<b>Current Liabilities</b>			
Trade and other payables	13	1,347,327	3,627,821
Provisions	14	404,248	509,995
Lease liabilities	15	23,381	-
<b>Total Current Liabilities</b>		<b>1,774,956</b>	<b>4,137,816</b>
<b>Non-Current Liabilities</b>			
Provisions	14	350,000	350,000
Lease liabilities	15	44,702	-
<b>Total Non-Current Liabilities</b>		<b>394,702</b>	<b>350,000</b>
<b>Total Liabilities</b>		<b>2,169,658</b>	<b>4,487,816</b>
<b>Net Assets</b>		<b>8,965,271</b>	<b>11,517,622</b>
<b>Equity</b>			
Issued capital	16	117,074,894	102,158,052
Reserves	18	1,828,314	1,540,268
Accumulated losses		(109,937,937)	(92,180,698)
<b>Total Equity</b>		<b>8,965,271</b>	<b>11,517,622</b>

The above consolidated statement of financial position should be read in conjunction with the accompanying condensed accompanying notes.

**Consolidated Statement of Changes in Equity**  
**For the Year ended 30 June 2022**

Consolidated	Contributed Equity	Accumulated Losses	Option Reserve	Total
	\$	\$	\$	\$
Balance at 1 July 2020	<b>82,995,954</b>	<b>(80,430,619)</b>	<b>492,401</b>	<b>3,057,736</b>
Total comprehensive income for the year:				
Loss for the year	-	(11,750,079)	-	(11,750,079)
	-	(11,750,079)	-	(11,750,079)
Contributions of equity (net of transaction costs)	19,162,098	-	-	19,162,098
Equity settled share-based payment transactions	-	-	1,047,867	1,047,867
Transfer from reserve to equity	-	-	-	-
<b>Balance at 30 June 2021</b>	<b>102,158,052</b>	<b>(92,180,698)</b>	<b>1,540,268</b>	<b>11,517,622</b>
Balance at 1 July 2021	<b>102,158,052</b>	<b>(92,180,698)</b>	<b>1,540,268</b>	<b>11,517,622</b>
Total comprehensive income for the year:				
Loss for the year	-	(17,757,239)	-	(17,757,239)
	-	(17,757,239)	-	(17,757,239)
Contributions of equity (net of transaction costs)	14,916,842	-	-	14,916,842
Equity settled share-based payment transactions	-	-	288,046	288,046
Transfer from reserve to equity	-	-	-	-
<b>Balance at 30 June 2022</b>	<b>117,074,894</b>	<b>(109,937,937)</b>	<b>1,828,314</b>	<b>8,965,271</b>

*The above consolidated statement of changes in equity should be read in conjunction with the accompanying notes.*



**Consolidated Statement of Cash Flows**  
**For the Year ended 30 June 2022**

	Note	Consolidated 2022 \$	2021 \$
<b>Cash Flows from Operating Activities</b>			
Payments to suppliers and employees		(2,553,733)	(1,891,474)
Interest received		5,773	3,458
Payments for exploration and evaluation		(3,587,410)	(2,903,173)
Other income		-	51,439
<b>Net cash (outflow) from operating activities</b>	21	<b>(6,135,370)</b>	<b>(4,739,750)</b>
<b>Cash Flows from Investing Activities</b>			
Purchase of property, plant and equipment		(1,310,423)	(3,379,200)
Payments for mine development expenditure		(12,524,524)	(2,848,684)
Proceeds from sale of first shipment		4,721,646	-
Payment for Mineral Tenements		-	(200,000)
<b>Net cash (outflow) from investing activities</b>		<b>(9,113,301)</b>	<b>(6,427,884)</b>
<b>Cash Flows from Financing Activities</b>			
Proceeds from issue of shares and other equity securities		15,649,681	20,782,800
Proceeds from exercised options		237,435	-
Share issue transaction costs		(682,230)	(1,133,724)
Proceeds borrowings		-	44,704
Repayment borrowings		(13,798)	(4,670)
<b>Net cash inflow from financing activities</b>		<b>15,191,088</b>	<b>19,689,110</b>
<b>Net (decrease)/increase in cash and cash equivalents</b>		<b>(57,583)</b>	<b>8,521,476</b>
Cash and cash equivalents at the start of the year		9,487,773	966,297
<b>Cash and cash equivalents at the end of the year</b>	7	<b>9,430,190</b>	<b>9,487,773</b>

*The above consolidated statement of cash flows should be read in conjunction with the accompanying notes.*

## Notes to the Consolidated Financial Statements for the Year Ended 30 June 2022

### 1. Summary of Significant Accounting Policies

This note provides a list of all significant accounting policies adopted in the preparation of these consolidated financial statements. These policies have been consistently applied to all the years presented, unless otherwise stated. The financial statements cover Venture Minerals Limited as a consolidated entity consisting of Venture Minerals Limited and its subsidiaries ('group' or consolidated entity').

#### (a) Basis of Preparation

These general-purpose financial statements have been prepared in accordance with Australian Accounting Standards and Interpretations issued by the Australian Accounting Standards Board and the *Corporations Act 2001*.

##### i. Compliance with IFRS

The consolidated financial statements of Venture Minerals Limited also comply with International Financial Reporting Standards (IFRS) as issued by the International Accounting Standards Board (IASB).

##### ii. Historical cost convention

These financial statements have been prepared on an accrual basis under the historical cost convention, modified where applicable by amendment of fair value of financial assets and financial liabilities.

#### (b) Principles of Consolidation

##### i. Subsidiaries

The consolidated financial statements incorporate the assets and liabilities of the consolidated entity as at 30 June 2022 and the results of the parent and all subsidiaries for the year then ended.

Subsidiaries are all entities over which the group has control. The group controls an entity when the group is exposed to, or has rights to, variable returns from its involvement with the entity and has the ability to affect those returns through its power to direct the activities of the entity. Subsidiaries are fully consolidated from the date on which control is transferred to the group. They are deconsolidated from the date that control ceases. The acquisition method of accounting is used to account for business combinations by the group.

Intercompany transactions, balances and unrealised gains on transactions between group companies are eliminated. Accounting policies of subsidiaries have been changed where necessary to ensure consistency with the policies adopted by the group.

Non-controlling interests in the results and equity of subsidiaries are shown separately in the statement of comprehensive income, statement of changes in equity and balance sheet respectively.

A list of controlled entities is contained in Note 28 to the financial statements. All controlled entities have a 30 June financial year-end.

## Notes to the Consolidated Financial Statements for the Year Ended 30 June 2022

### 1. Summary of Significant Accounting Policies (continued)

#### ii. Joint arrangements

Under AASB 11 Joint Arrangements investments in joint arrangements are classified as either joint operations or joint ventures. The classification depends on the contractual rights and obligations of each investor, rather than the legal structure of the joint arrangement. Venture Minerals Limited has joint operations.

#### iii. Joint operations

Venture Minerals Limited recognises its direct right to the assets, liabilities, revenues and expenses of joint operations and its share of any jointly held or incurred assets, liabilities, revenues and expenses.

#### (c) Segment reporting

Operating segments are reported in a manner consistent with the internal reporting provided to the chief operating decision maker. The chief operating decision maker, who is responsible for allocating resources and assessing performance of the operating segments, has been identified as the board of directors.

#### (d) Foreign currency translation

##### i. Functional and presentation currency

Items included in the financial statements of each of the group's entities are measured using the currency of the primary economic environment in which the entity operates ('the functional currency'). The consolidated financial statements are presented in Australian dollars, which is Venture Minerals Limited's functional and presentation currency.

##### ii. Transactions and balances

Foreign currency transactions are translated into the functional currency using the exchange rates prevailing at the dates of the transactions. Foreign exchange gains and losses resulting from the settlement of such transactions and from the translation of monetary assets and liabilities denominated in foreign currencies at year end exchange rates are generally recognised in profit or loss. They are deferred in equity if they relate to qualifying cash flow hedges, qualifying net investment hedges or are attributable to part of the net investment in a foreign operation.

Translation differences on financial assets and liabilities carried at fair value are reported as part of the fair value gain or loss. Translation differences on non-monetary financial assets and liabilities such as equities held at fair value through profit or loss are recognised in profit or loss as part of the fair value gain or loss. Translation differences on non-monetary financial assets such as equities classified as available for sale financial assets are included in the fair value reserve in equity.

#### (e) Revenue recognition

Revenue is recognised when performance obligations are satisfied, being when control upon good or services underlying the performance obligation is transferred to the customer.

##### i. Interest income

Interest income is recognised as the interest accrues (using the effective interest method, which is the rate that exactly discounts estimated future cash receipts through the expected life of the financial instrument) to the net carrying amount of the financial asset.

##### ii. Other income

Revenue from other income, rendering goods and services is measured at the fair value of consideration received or receivable for the sale of goods and services in the ordinary course of the Group's activities when control of the asset is transferred to the customer or services rendered.

##### iii. Grant income

Grant income received from Governments is recognised on a cash basis upon receipt. This includes grants received from the ATO from the Cashflow Boost for the year ended 30 June 2021.

## Notes to the Consolidated Financial Statements for the Year Ended 30 June 2022

### 1. Summary of Significant Accounting Policies (continued)

#### (f) Income tax

The income tax expense or benefit for the period is the tax payable on the current period's taxable income based on the national income tax rate for each jurisdiction adjusted by changes in deferred tax assets and liabilities attributable to temporary differences between the tax bases of assets and liabilities and their carrying amounts in the financial statements, and to unused tax losses.

Deferred tax assets and liabilities are recognised for temporary differences at the tax rates expected to apply when the assets are recovered or liabilities are settled, based on those tax rates which are enacted or substantively enacted for each jurisdiction. The relevant tax rates are applied to the cumulative amounts of deductible and taxable temporary differences to measure the deferred tax asset or liability. An exception is made for certain temporary differences arising from the initial recognition of an asset or a liability.

No deferred tax asset or liability is recognised in relation to these temporary differences if they arose in a transaction, other than a business combination, that at the time of the transaction did not affect either accounting profit or taxable profit or loss.

Deferred tax assets are recognised for deductible temporary differences and unused tax losses only if it is probable that future taxable amounts will be available to utilise those temporary differences and losses. Deferred tax assets and liabilities are offset when there is a legally enforceable right to offset current tax assets and liabilities and when the deferred tax balances relate to the same taxation authority. Current tax assets and tax liabilities are offset where the entity has a legally enforceable right to offset and intends either to settle on a net basis, or to realise the asset and settle the liability simultaneously. Current and deferred tax balances attributable to amounts recognised directly in equity are also recognised directly in equity.

The group is entitled to claim special tax deductions and rebates on qualifying expenditure under the Research and Development Tax Incentive Scheme in Australia. The group accounts for the rebate as an Income Tax Benefit/Income.

#### (g) Leases – Right-of-use assets

A right-of-use asset is recognised at the commencement date of a lease. The right-of-use asset is measured at cost, which comprises the initial amount of the lease liability, adjusted for, as applicable, any lease payments made at or before the commencement date net of any lease incentives received, any initial direct costs incurred, and, except where included in the cost of inventories, an estimate of costs expected to be incurred for dismantling and removing the underlying asset, and restoring the site or asset.

Right-of-use assets are depreciated on a straight-line basis over the unexpired period of the lease or the estimated useful life of the asset, whichever is the shorter. Where the Group expects to obtain ownership of the leased asset at the end of the lease term, the depreciation is over its estimated useful life. Right-of use assets are subject to impairment or adjusted for any remeasurement of lease liabilities.

The Group has elected not to recognise a right-of-use asset and corresponding lease liability for short term leases with terms of 12 months or less and leases of low-value assets. Lease payments on these assets are expensed to profit or loss as incurred.

#### (h) Impairment of assets

At each reporting date, the group assesses whether there is any indication that an asset may be impaired. An impairment loss is recognised for the amount by which the asset's carrying amount exceeds its recoverable amount. The recoverable amount is the higher of an asset's fair value less costs to sell and value in use. For the purposes of assessing impairment, assets are grouped at the lowest levels for which there are separately identifiable cash inflows which are largely independent of the cash inflows from other assets or groups of assets (cash-generating units). Non-financial assets other than goodwill that suffered impairment are reviewed for possible reversal of the impairment at each reporting date or more frequently if events or changes in circumstances indicate that they might be impaired.

## Notes to the Consolidated Financial Statements for the Year Ended 30 June 2022

### 1. Summary of Significant Accounting Policies (continued)

#### (i) Cash and cash equivalents

For the purposes of presentation of the statement of cash flows, cash and cash equivalents include cash on hand, deposits held at call with financial institutions, other short-term, highly liquid investments with original maturities of three months or less that are readily convertible to known amounts of cash and which are subject to an insignificant risk of changes in value, and bank overdrafts.

#### (j) Trade and other receivables

Trade and other receivables are initially recognised initially at fair value and subsequently measured at amortised costs using the effective interest method, less provision for impairment. Trade and other receivables are generally due for settlement within 30 days. Collectability of trade receivables is reviewed on an ongoing basis. Amounts that are known to be uncollectible are written off by reducing the carrying amount directly.

#### (k) Exploration and evaluation expenditure

The exploration and evaluation expenditure accounting policy is to expense expenditure as incurred other than for the capitalisation of acquisition costs.

#### (l) Property, plant and equipment

All property, plant and equipment is stated at historical cost less depreciation. Historical cost includes expenditure that is directly attributable to the acquisition of the items. Subsequent costs are included in the asset's carrying amount or recognised as a separate asset, as appropriate, only when it is probable that future economic benefits associated with the item will flow to the company and the cost of the item can be measured reliably. All other repairs and maintenance are charged to the statement of profit or loss and comprehensive income during the financial period in which they are incurred.

Land is not depreciated. Depreciation on assets is calculated using the diminishing value method to allocate their cost, net of their residual values, over their estimated useful lives, as follows:

Plant and equipment - office	40.0%
Furniture and equipment - office	20.0%
Plant and equipment - field	40.0%
Motor vehicles	40.0%
Leasehold improvements	25.0%
Office equipment	25.0%

The assets' residual values and useful lives are reviewed, and adjusted if appropriate, at each balance date. An asset's carrying amount is written down immediately to its recoverable amount if the asset's carrying amount is greater than its estimated recoverable amount (Note 1(h)). Gains and losses on disposals are determined by comparing proceeds with carrying amount. These are included in the statement of comprehensive income.

#### (m) Mine Properties

Upon completion of the mine construction phase, the assets are transferred into "Property, plant and equipment" or "Mine properties". Items of property, plant and equipment and producing mine are stated at cost, less accumulated depreciation and accumulated impairment losses. The initial cost of an asset comprises its purchase price or construction cost, any costs directly attributable to bringing the asset into operation, the initial estimate of the rehabilitation obligation, and, for qualifying assets (where relevant), borrowing costs. The purchase price or construction cost is the aggregate amount paid and the fair value of any other consideration given to acquire the asset.

The capitalised value of a finance lease is also included in property, plant and equipment. Mine properties also consist of the fair value attributable to mineral reserves and the portion of mineral resources considered to be probable of economic extraction at the time of an acquisition. When a mine construction project moves into the production phase, the capitalisation of certain mine construction costs ceases, and costs are either regarded as part of the cost of inventory or expensed, except for costs which qualify for capitalisation relating to mining asset additions, improvements or new developments, underground mine development or mineable reserve development.



## Notes to the Consolidated Financial Statements for the Year Ended 30 June 2022

### 1. Summary of Significant Accounting Policies (continued)

#### (n) Mine Rehabilitation

Costs of land rehabilitation and site restoration are provided over the life of the mine from when development commences and are included in the costs of that stage. Site restoration costs include the dismantling and removal of mining plant, equipment and building structures, waste removal and rehabilitation of the site in accordance with clauses of the mining permits. Such costs are determined using estimates of future costs on an undiscounted basis.

#### (o) Depreciation/amortisation of Mine Properties

Accumulated mine development costs are depreciated/amortised on a Unit of Production Method (UOP) basis over the economically recoverable reserves of the mine concerned, except in the case of assets whose useful life is shorter than the life of the mine, in which case, the straight-line method is applied. The unit of account for run-of-mine (ROM) costs is tonnes of ore, whereas the unit of account for post-ROM costs is recoverable metal. Rights and concessions are depleted on the UOP basis over the economically recoverable reserves of the relevant area. The UOP rate calculation for the depreciation/amortisation of mine development costs takes into account expenditures incurred to date, together with sanctioned future development expenditure.

Economically recoverable reserves include proven and probable reserves. The estimated fair value attributable to the mineral reserves and the portion of mineral resources considered to be probable of economic extraction at the time of the acquisition is amortised on a UOP basis, whereby the denominator is the proven and probable reserves, and for some mines, a portion of mineral resources which are expected to be extracted economically. These other mineral resources may be included in depreciation calculations in limited circumstances and where there is a high degree of confidence in their economic extraction.

#### (p) Trade and other payables

These amounts represent liabilities for goods and services provided to the company prior to the end of financial year which are unpaid. The amounts are unsecured and are usually paid within 30 days of recognition.

#### (q) Provisions

Provisions are recognised when: the company has a present legal or constructive obligation as a result of past events; it is probable that an outflow of resources will be required to settle the obligation; and the amount has been reliably estimated. Provisions are not recognised for future operating losses.

Provisions are measured at the present value of management's best estimate of the expenditure required to settle the present obligation at the balance date. The discount rate used to determine the present value reflects current market assessments of the time value of money and the risks specific to the liability. The increase in the provision due to the passage of time is recognised as interest expense.

#### (r) Employee benefits

##### i. Short-term obligations

Liabilities for wages and salaries, including non-monetary benefits and annual leave expected to be settled within 12 months of the reporting date are recognised in respect of employee's services up to the end of the reporting period and are measured at the amounts expected to be paid when liabilities are settled. The liability for annual leave is recognised in the provision for employee benefits. All other short-term employee benefit obligations are presented as other payables.

##### ii. Other long-term employee benefit obligations

The liability for long service leave and annual leave which is not expected to be settled within 12 months after the end of the period in which the employees render the related service is recognised in the provision for employee benefits and measured as the present value of expected future payments to be made in respect of services provided by employees up to the reporting date using the projected unit credit method. Consideration is given to expected future wage and salary levels, experience of employee departures and periods of service. Expected future payments are discounted using market yields at the reporting date on national government bonds with terms to maturity and currency that match, as closely as possible, the estimated future cash outflows. The obligations are presented as current liabilities in the balance sheet if the entity does not have an unconditional right to defer settlement for at least twelve months after the reporting date, regardless of when the actual settlement is expected to occur.

## Notes to the Consolidated Financial Statements for the Year Ended 30 June 2022

### 1. Summary of Significant Accounting Policies (continued)

#### (r) Employee benefits (continued)

##### iii. Share-based payments

The company provides benefits to employees (including directors) of the group in the form of share-based payment transactions, whereby employees render services in exchange for shares or rights over shares ('equity-settled transactions'). There is currently an Employee Incentive Option Scheme (EIOS), which provides benefits to directors and senior executives. The cost of these equity-settled transactions with employees is measured by reference to the fair value at the date at which they are granted. The fair value is determined using a Black-Scholes option pricing model that takes into account the exercise price, the term of the option, the impact of dilution, the share price at grant date and expected volatility of the underlying share, the expected dividend yield and the risk free interest rate for the term of the option.

In valuing equity-settled transactions, no account is taken of any performance conditions, other than conditions linked to the price of shares of Venture Minerals Limited ('market conditions'). The number of shares expected to vest is estimated based on the non-market vesting conditions and the probability the option will be exercised

#### (s) Contributed equity

Ordinary shares are classified as equity. Incremental costs directly attributable to the issue of new shares are shown in equity as a deduction, net of tax, from the proceeds. Incremental costs directly attributable to the issue of new shares for the acquisition of a business are not included in the cost of the acquisition as part of the purchase consideration.

#### (t) Earnings per share

##### i. Basic earnings per share

Basic earnings per share is calculated by dividing the profit attributable to equity holders of the company excluding any costs of servicing equity other than ordinary shares, by the weighted average number of ordinary shares outstanding during the financial year, adjusted for bonus elements in ordinary shares issued during the year.

##### ii. Diluted earnings per share

Diluted earnings per share adjusts the figures used in the determination of basic earnings per share to take into account the after-tax effect of interest and other financing costs associated with the dilutive potential ordinary shares and the weighted average number of shares assumed to have been issued for no consideration in relation to dilutive potential ordinary shares.

#### (u) Goods and services tax ('GST')

Revenues, expenses and assets are recognised net of the amount of associated GST, unless the GST incurred is not recoverable from the taxation authority. In this case it is recognised as part of the cost of acquisition of the asset or as part of the expense.

Receivables and payables are stated inclusive of the amount of GST receivable or payable. The net amount of GST recoverable from, or payable to, the taxation authority is included with other receivables or payables in the statement of financial position. Cash flows are presented on a gross basis. The GST components of cash flows arising from investing or financing activities which are recoverable from, or payable to the taxation authority, are presented as operating cash flow.

#### (v) Financial instruments

##### **Recognition, initial measurement and derecognition**

Financial assets and financial liabilities are recognised when the Group becomes a party to the contractual provisions of the financial instrument. Financial instruments (except for trade receivables) are measured initially at fair value adjusted by transactions costs, except for those carried "at fair value through profit or loss", in which case transaction costs are expensed to profit or loss. Where available, quoted prices in an active market are used to determine the fair value. In other circumstances, valuation techniques are adopted. Subsequent measurement of financial assets and financial liabilities are described below.

## Notes to the Consolidated Financial Statements for the Year Ended 30 June 2022

### 1. Summary of Significant Accounting Policies (continued)

(v) Financial instruments (continued)

#### **Recognition, initial measurement and derecognition (continued)**

Trade receivables are initially measured at the transaction price if the receivables do not contain a significant financing component in accordance with AASB 15.

Financial assets are derecognised when the contractual rights to the cash flows from the financial asset expire, or when the financial asset and all substantial risks and rewards are transferred. A financial liability is derecognised when it is extinguished, discharged, cancelled or expires.

#### **Classification and subsequent measurement**

##### **Financial assets**

Except for those trade receivables that do not contain a significant financing component and are measured at the transaction price in accordance with AASB 15, all financial assets are initially measured at fair value adjusted for transaction costs (where applicable).

For the purpose of subsequent measurement, financial assets other than those designated and effective as hedging instruments, are classified into the following categories upon initial recognition:

- amortised cost;
- fair value through other comprehensive income (FVOCI); and
- fair value through profit or loss (FVPL).

Classifications are determined by both:

- The contractual cash flow characteristics of the financial assets; and
- The entities business model for managing the financial asset.

##### **Financial assets at amortised cost**

Financial assets are measured at amortised cost if the assets meet the following conditions (and are not designated as FVPL):

- they are held within a business model whose objective is to hold the financial assets and collect its contractual cash flows; and
- the contractual terms of the financial assets give rise to cash flows that are solely payments of principal and interest on the principal amount outstanding.

After initial recognition, these are measured at amortised cost using the effective interest method. Discounting is omitted where the effect of discounting is immaterial. The Group's cash and cash equivalents, trade and most other receivables fall into this category of financial instruments.

##### **Financial assets at fair value through other comprehensive income**

The Group measures debt instruments at fair value through OCI if both of the following conditions are met:

- The contractual terms of the financial asset give rise on specified dates to cash flows that are solely payments of principal and interest on the principal amount outstanding; and
- The financial asset is held within a business model with the objective of both holding to collect contractual cash flows and selling the financial asset.

For debt instruments at fair value through OCI, interest income, foreign exchange revaluation and impairment losses or reversals are recognised in the statement of profit or loss and computed in the same manner as for financial assets measured at amortised cost. The remaining fair value changes are recognised in OCI.

## Notes to the Consolidated Financial Statements for the Year Ended 30 June 2022

### 1. Summary of Significant Accounting Policies (continued)

Upon initial recognition, the Group can elect to classify irrevocably its equity investments as equity instruments designated at fair value through OCI when they meet the definition of equity under AASB 132 Financial Instruments: Presentation and are not held for trading.

#### ***Financial assets at fair value through profit or loss (FVPL)***

Financial assets at fair value through profit or loss include financial assets held for trading, financial assets designated upon initial recognition at fair value through profit or loss, or financial assets mandatorily required to be measured at fair value. Financial assets are classified as held for trading if they are acquired for the purpose of selling or repurchasing in the near term.

#### ***Financial liabilities***

Financial liabilities are classified, at initial recognition, as financial liabilities at fair value through profit or loss, loans and borrowings, payables, or as derivatives designated as hedging instruments in an effective hedge, as appropriate. Financial liabilities are initially measured at fair value, and, where applicable, adjusted for transaction costs unless the Group designated a financial liability at fair value through profit or loss.

Subsequently, financial liabilities are measured at amortised cost using the effective interest method except for derivatives and financial liabilities designated at FVPL, which are carried subsequently at fair value with gains or losses recognised in profit or loss.

All interest-related charges and, if applicable, gains and losses arising on changes in fair value are recognised in profit or loss.

#### ***Fair value hierarchy***

The Group's assets and liabilities measured or disclosed at fair value, using a three level hierarchy, based on the lowest level of input that is significant to the entire fair value measurement, being:

- Level 1: Quoted prices (unadjusted) in active markets for identical assets or liabilities that the entity can access at the measurement date.
- Level 2: Inputs other than quoted prices included within Level 1 that are observable for the asset or liability, either directly or indirectly.
- Level 3: Unobservable inputs for the asset or liability.

Estimates of fair value take into account factors and market conditions evident at balance date. Uncertainty and changes in global market conditions in the future may impact fair values in the future.

#### ***Impairment***

The Group assesses, on a forward-looking basis, the expected credit losses associated with its debt instruments carried at amortised cost and FVOCI. The impairment methodology applied depends on whether there has been a significant increase in credit risk. For trade receivables, the Group applies the simplified approach permitted by AASB, which requires expected lifetime losses to be recognised from initial recognition of the receivables.

## Notes to the Consolidated Financial Statements for the Year Ended 30 June 2022

### 1. Summary of Significant Accounting Policies (continued)

#### (w) New accounting standards and interpretations adopted by the Group

The Group has considered the implications of new and amended Accounting Standards but determined that their application to the financial statements is either not relevant or not material.

#### AASB 2021-3: Amendments to Australian Accounting Standards – COVID-19 Related Rent Concessions beyond 30 June 2021

The amendment amends AASB 16 to extend by one year, the application of the practical expedient added to AASB 16 by AASB 2020-4: Amendments to Australian Accounting Standards – COVID-19-Related Rent Concessions. The practical expedient permits lessees not to assess whether rent concessions that occur as a direct consequence of the COVID-19 pandemic and meet specified conditions are lease modifications and instead, to account for those rent concessions as if they were not lease modifications. The amendment has not had a material impact on the Group's financial statements.

#### AASB 2020-8: Amendments to Australian Accounting Standards – Interest Rate Benchmark Reform – Phase 2

The Group has applied AASB 2020-8 which amends various standards to help listed entities to provide financial statement users with useful information about the effects of the interest rate benchmark reform on those entities' financial statements. As a result of these amendments, an entity:

- will not have to derecognise or adjust the carrying amount of financial statements for changes required by the reform, but will instead update the effective interest rate to reflect the change to the alternative benchmark rate;
- will not have to discontinue its hedge accounting solely because it makes changes required by the reform, if the hedge meets other hedge accounting criteria; and
- will be required to disclose information about new risks arising from the reform and how it manages the transition to alternative benchmark rates. The amendment has not had a material impact on the Group's financials.

#### (x) New and Amended Accounting Policies Not Yet Adopted by the Group

#### AASB 2020-1: Amendments to Australian Accounting Standards – Classification of Liabilities as Current or Non-current

The amendment amends AASB 101 to clarify whether a liability should be presented as current or non-current. The Group plans on adopting the amendment for the reporting period ending 30 June 2024.

#### AASB 2020-3: Amendments to Australian Accounting Standards – Annual Improvements 2018-2020 and Other Amendments

AASB 2020-3: Amendments to Australian Accounting Standards – Annual Improvements 2018-2020 and Other Amendments is an omnibus standard that amends AASB 1, AASB 3, AASB 9, AASB 116, AASB 137 and AASB 141.

#### AASB 2021-2: Amendments to Australian Accounting Standards – Disclosure of Accounting Policies and Definition of Accounting Estimates

The amendment amends AASB 7, AASB 101, AASB 108, AASB 134 and AASB Practice Statement 2. These amendments arise from the issuance by the IASB of the following International Financial Reporting Standards: Disclosure of Accounting Policies (Amendments to IAS 1 and IFRS Practice Statement 2) and Definition of Accounting Estimates (Amendments to IAS 8).

#### AASB 2021-5: Amendments to Australian Accounting Standards – Deferred Tax related to Assets and Liabilities arising from a Single Transaction

The amendment amends the initial recognition exemption in AASB 112: Income Taxes such that it is not applicable to leases and decommissioning obligations – transactions for which companies recognise both an asset and liability and that give rise to equal taxable and deductible temporary differences. The Group plans on adopting the amendment for the reporting period ending 30 June 2024.

These amendments are not expected to have a material impact on the financial statements once adopted.



## Notes to the Consolidated Financial Statements for the Year Ended 30 June 2022

### 1. Summary of Significant Accounting Policies (continued)

#### (y) Going Concern

The financial statements have been prepared on a going concern basis of accounting which assumes that the Group will be able to meet its commitments, realise its assets, discharge its liabilities in the ordinary course of business and meet exploration budgets. In arriving at this position, the Directors recognise the Group is dependent on various funding alternatives to meet these commitments which may include share placements and suitable project funding arrangements including earn-ins, joint ventures or project divestment.

The loss for the year ended 30 June 2022 from continuing operations was \$17,757,239 with \$9,430,190 of cash and cash equivalents, net assets of \$8,965,271 and a net decrease in cash and cash equivalents \$57,583.

The Directors believe that at the date of signing the financial statements there are reasonable grounds to believe that having regard to matters set out above, the Group will be able to raise sufficient funds to meet its obligations as and when they fall due. In the event that the Group does not achieve the matters set out above there is material uncertainty whether the Group will continue as a going concern and therefore whether it will realise its assets and extinguish its liabilities in the normal course of business and at amounts stated in the financial statements.

### 2. Critical accounting estimates and judgements

Estimates and judgements are continually evaluated and are based on historical experience and other factors, including expectations of future events that may have a financial impact on the entity and that are believed to be reasonable under the circumstances.

The group makes estimates and assumptions concerning the future. The resulting accounting estimates and judgements may differ from the related actual results and may have a significant effect on the carrying amount of assets and liabilities within the next financial year and on the amounts recognised in the financial statements. The estimates and assumptions that have a significant risk of causing a material adjustment to the carrying amounts of assets and liabilities within the next financial year are discussed below.

#### i. Share based payment transactions

The Group measures the cost of equity-settled transactions with employees by reference to the fair value of the equity instruments at the date at which they are granted. The fair value is determined by an internal valuation using a Black-Scholes option pricing model, using the assumptions detailed in Note 26.

#### ii. Deferred Tax Assets

Deferred tax assets are recognised for deductible temporary differences when management considers that it is probable that future taxable profits will be available to utilise those temporary differences.

#### iii. Rehabilitation and restoration provisions

The Group has made estimates in determining the estimated mine rehabilitation provision. In determining the provision consideration is given to estimated future costs to be incurred, stage of the project development and the timing of those costs. Final rehabilitation costs are uncertain, and estimates may vary in response to factors including: estimates of the extent and costs of rehabilitation activities, the timing of those activities, technological changes, regulatory changes etc. These uncertainties may cause future actual expenditure to differ from the current provision. Accordingly, significant estimates and assumptions are made in determining the provision for mine rehabilitation.

#### iv. Impairment assessment

The Group assesses impairment at the end of each reporting period by evaluating the conditions and events specific to the Group that may be indicative of impairment triggers. Recoverable amounts of relevant assets are reassessed using value-in-use calculations which incorporate various key assumptions.

## Notes to the Consolidated Financial Statements for the Year Ended 30 June 2022

### 2. Critical accounting estimates and judgements (continued)

#### v. Pre-commencement of commercial production – Riley Iron Ore Project

During the year, the Group assessed the progress of the Riley Iron Ore operations to determine if the commercial production stage has commenced.

The assessment considered the following:

- a. All major capital expenditures to bring the mine to the condition necessary for it to be capable of operating in the manner intended by the Group have been completed;
- b. The crushing facilities and other related infrastructure are capable of running at their designed capacities;
- c. Mining operations have reached a sufficient stage that their production levels have the ability to sustain the ongoing production of ore for transport at the required volumes; and
- d. Transport infrastructure and haulage are capable of running at the intended capacity and to meet the output volumes of the mining and processing operations.

The assessment concluded that the commercial production stage had not commenced and any production during the year was considered to be pre-commissioning expenditures and revenues.

During the commissioning phase expenditures of an operating nature are capitalised to mine development costs. Revenue from the sale of ore during this phase is to be treated as pre-production income and is to be credited to capitalised mine development costs.

In September 2021, the Board decided to cease operations at the Riley Iron Ore Project following the decline in the global price of iron ore and the escalating operating costs. All capitalised development costs, after netting off the revenues, were fully written off.

**Notes to the Consolidated Financial Statements for the Year Ended 30 June 2022**

		Consolidated	
		2022	2021
		\$	\$
<b>3. Revenue</b>			
(a) From continuing operations			
Interest received		8,090	6,220
Total revenue from continuing operations		8,090	6,220
(b) Other income			
Other income – ATO Cashflow Boost		-	50,000
Other income		346	1,439
Rental income		4,720	-
Total other income		5,066	51,439
<b>4. Expenses</b>			
Loss before income tax includes the following specific expenses:			
(a) Employee benefits expense			
Salary and wages expense		469,135	346,620
Other employee provisions		360,736	220,950
Defined contribution superannuation expense		-	-
Total employee benefits expense		829,871	567,570
(b) Occupancy expenses			
Operating lease expense		57,176	52,170
Other occupancy costs		31,369	22,931
Total occupancy expense		88,545	75,101
(c) Depreciation of non-current assets			
Right-of-use assets (Refer to Note 12)		7,165	-
Plant and equipment		43,202	12,084
Furniture and equipment - office		844	1,055
Leasehold improvements		1,545	4,635
Motor vehicles		28,549	9,543
Total depreciation of non-current assets (refer to note 9)		81,305	27,317
(d) Finance costs in respect of finance leases			
Other bank and finance charges		32,300	25,907
Interest expense on lease liabilities		1,840	-
Total finance costs in respect of finance leases		34,140	25,907
<b>5. Auditor's Remuneration</b>			
Remuneration of the auditor of the group			
Auditing or reviewing the financial statements		49,890	53,473
Non-audit services		-	-
Total auditor remuneration		49,890	53,473

**Notes to the Consolidated Financial Statements for the Year Ended 30 June 2022**

		Consolidated	
		2022	2021
		\$	\$
<b>6.</b>	<b>Income Tax Expense</b>		
(a)	Income tax expense		
	Current tax	-	-
	Deferred tax	-	-
	Total income tax (expense)/benefit	-	-
	Deferred income tax expense included in income tax expense comprises:		
	(Increase) in deferred tax assets (Note 6(c))	-	-
	Increase in deferred tax liabilities (Note 6(d))	-	-
		-	-
(b)	Numerical reconciliation of income tax expense to prima facie tax payable		
	Profit/(loss) from continuing operations before income tax expense	(17,757,239)	(11,750,079)
	Tax (tax benefit) at the tax rate of 25.0% (2021: 26.0%)	(4,439,310)	(3,055,021)
	Tax effect of amounts which are not deductible (taxable) in calculating taxable income:		
	Share based payments	-	145,831
	Other non-deductible amounts	(153,117)	(77,020)
	Non-assessable income	-	(13,000)
	Prior year adjustment	-	(427,064)
	Effect of changes in unrecognised temporary differences	1,285,142	523,136
		(3,307,285)	(2,903,138)
	Unrecognised tax losses	3,307,285	2,903,138
	Income tax expense	-	-
(c)	Deferred tax assets		
	Tax losses	-	-
	Employee benefits	-	-
	Other accruals	-	-
	Total deferred tax assets	-	-
	Set-off deferred tax liabilities (Note 6(d))	-	-
	Net deferred tax assets	-	-
(d)	Deferred tax liabilities		
	Exploration expenditure	-	-
	Total deferred tax liabilities	-	-
	Set-off deferred tax assets (Note 6(c))	-	-
	Net deferred tax liabilities	-	-
(e)	Tax losses		
	Unused tax losses for which no DTA has been recognized	90,405,478	77,176,338
	Potential tax benefit at 25% (2021: 25%)	22,601,370	19,294,084
(f)	Unrecognised temporary differences		
	Unrecognised deferred tax asset relating to capital raising costs	1,322,373	1,152,521
	Potential tax benefit at 25% (2021: 25%)	330,593	288,130

**Notes to the Consolidated Financial Statements for the Year Ended 30 June 2022**

		Consolidated 2022 \$	2021 \$
<b>7.</b>	<b>Cash &amp; Cash Equivalents</b>		
(a)	Cash & cash equivalents		
	Cash at bank and in hand	9,430,190	9,487,773
	Total cash and cash equivalents	<u>9,430,190</u>	<u>9,487,773</u>
(b)	Cash at bank and on hand		
	Cash on hand is non-interest bearing. Cash at bank bears interest rates between 0.00% and 0.50% (2021: 0.00% and 0.50%).		
(c)	Deposits at call		
	There were no deposits at call during the year. (2021: Nil).		
<b>8.</b>	<b>Trade &amp; Other Receivables</b>		
(a)	Current		
	Other receivables	209,252	487,493
	Prepayments	76,440	247,848
	Total current trade and other receivables	<u>285,692</u>	<u>735,341</u>
(b)	Non-Current		
	Deposits <sup>1</sup>	<u>952,758</u>	<u>937,866</u>
	Total non-current trade and other receivables	<u>952,758</u>	<u>937,866</u>
	<sup>1</sup> Deposits include cash of \$947,274 (2021: \$937,866) including capitalised interest of \$5,484, to secure a bank guarantee facility to provide a corporate credit card facility and security deposits required by the relevant authority for the granted exploration and mining licences.		
(c)	Past due and impaired receivables		
	As at 30 June 2022, there were no other receivables that were past due or impaired (2021: Nil).		
(d)	Effective interest rates and credit risk		
	Information concerning effective interest rates and credit risk of both current and non-current trade and other receivables is set out in Note 19.		

<b>Notes to the Consolidated Financial Statements for the Year Ended 30 June 2022</b>						
<b>Consolidated</b>	<b>Plant &amp; Equipment</b>	<b>Furniture &amp; Equipment</b>	<b>Leasehold Improvements</b>	<b>Motor Vehicle</b>	<b>Assets under construction</b>	<b>Total</b>
	<b>\$</b>	<b>\$</b>	<b>\$</b>	<b>\$</b>	<b>\$</b>	<b>\$</b>
<b>9. Property, Plant &amp; Equipment</b>						
Opening net book amount	66,762	4,221	2,318	71,373	4,424,784	4,569,458
Additions	54,597	-	-	-	133,952	188,549
Depreciation charge	(43,202)	(844)	(1,545)	(28,549)	-	(74,140)
Disposal	-	-	-	-	-	-
Effect of exchange rates	-	-	-	-	-	-
Impairment	-	-	-	-	(4,558,736)	(4,558,736)
Closing net book amount	<b>78,157</b>	<b>3,377</b>	<b>773</b>	<b>42,824</b>	<b>-</b>	<b>125,131</b>
At 30 June 2022						
Cost or fair value	266,412	48,778	36,932	145,398	4,558,736	5,056,256
Accumulated depreciation	(188,255)	(45,401)	(36,159)	(102,574)	(4,558,736)	(4,931,125)
Net book amount	<b>78,157</b>	<b>3,377</b>	<b>773</b>	<b>42,824</b>	<b>-</b>	<b>125,131</b>
At 30 June 2021						
Opening net book amount	13,785	5,276	6,953	1,194	-	27,208
Additions	65,061	-	-	79,722	4,424,784	4,569,567
Depreciation charge	(12,084)	(1,055)	(4,635)	(9,543)	-	(27,317)
Disposal	-	-	-	-	-	-
Effect of exchange rates	-	-	-	-	-	-
Closing net book amount	<b>66,762</b>	<b>4,221</b>	<b>2,318</b>	<b>71,373</b>	<b>4,424,784</b>	<b>4,569,458</b>
At 30 June 2021						
Cost or fair value	211,815	48,778	36,932	145,398	4,424,784	4,867,707
Accumulated depreciation	(145,053)	(44,557)	(34,614)	(74,025)	-	(298,249)
Net book amount	<b>66,762</b>	<b>4,221</b>	<b>2,318</b>	<b>71,373</b>	<b>4,424,784</b>	<b>4,569,458</b>



**Notes to the Consolidated Financial Statements for the Year Ended 30 June 2022**

	Consolidated 2022 \$	2021 \$
<b>10. Exploration &amp; Evaluation Expenditure</b>		
(a) Non-current		
Opening balance	275,000	75,000
Exploration and acquisition costs	4,185,900	7,561,229
Reallocation to mine development – Note 11	(579,907)	(4,423,065)
Exploration expensed	(3,605,993)	(2,938,164)
Total non-current exploration and evaluation expenditure	<u>275,000</u>	<u>275,000</u>
(b) The value of the group's interest in exploration expenditure is dependent upon:		
<ul style="list-style-type: none"> <li>▪ the continuance of the group's rights to tenure of the areas of interest;</li> <li>▪ the results of future exploration; and</li> <li>▪ the recoupment of costs through successful development and exploitation of the areas of interest, or alternatively, by their sale.</li> </ul>		
<p>The group's exploration properties may be subjected to claim(s) under native title, or contain sacred sites, or sites of significance to Aboriginal people. As a result, exploration properties or areas within the tenements may be subject to exploration restrictions, mining restrictions and/or claims for compensation. At this time, it is not possible to quantify whether such claims exist, or the quantum of such claims.</p>		

	Consolidated 2022 \$	2021 \$
<b>11. Mine Development Expenditure</b>		
Non-Current		
Opening Balance	-	2,012,062
Additions (Includes mining operating costs)	10,613,327	-
Proceeds from iron ore sales – Development Phase	(4,721,646)	-
Mine development expenditure transferred in – Note 10	579,907	4,423,065
Impairment	(6,471,588)	(6,435,127)
Total non-current – Mine Development Expenditure	<u>-</u>	<u>-</u>
<b>12. Right-of-use assets</b>		
Non-Current		
Opening net book amount	-	-
On initial recognition	73,323	-
Depreciation charge	(7,165)	-
Closing net book amount	<u>66,158</u>	<u>-</u>
At 30 June 2022		
Cost or fair value	73,323	-
Accumulated depreciation	(7,165)	-
Net book amount	<u>66,158</u>	<u>-</u>

**Notes to the Consolidated Financial Statements for the Year Ended 30 June 2022**

	Consolidated	
	2022	2021
	\$	\$
<b>12. Right-of-use assets (continued)</b>		
Amounts recognised in profit or loss		
Other income – Recharges	4,720	-
Depreciation expense on right of use of	(7,165)	-
Interest expense on lease liabilities	(1,840)	-
Payment on lease liabilities	7,080	-
<p>The Group has a lease over the premises at Unit 3 – 4 Elmsfield Road, Midvale with an average estimated life of 2.5 years remaining. The Group holds the lease and recharges other occupants of the premises recognised as other income.</p> <p>The discount rate used in calculation the present value of the Right-of-use asset is 4.0% per annum, representing the cost of borrowings.</p>		
<b>13. Trade &amp; Other Payables</b>		
Current		
Trade Payables	981,237	1,073,426
Accruals	240,355	2,439,923
Other Payables	125,735	114,472
Total current trade & other payables	1,347,327	3,627,821
<p>No trade or other payables are considered past due.</p>		
<b>14. Provisions</b>		
Current		
Employee entitlements	404,248	509,995
Total current provisions	404,248	509,995
Non-Current		
Mine rehabilitation	350,000	350,000
Total non-current provisions	350,000	350,000
<b>15. Lease Liabilities</b>		
Year 1	23,381	-
Year 2	49,139	-
Year 3	-	-
At 30 June 2022	72,520	-
Less: Accrued interest	(4,437)	-
<b>Total liabilities</b>	68,083	-
<p>The lease liabilities split between current and non-current are as follows:</p>		
Current	23,381	-
Non-current	44,702	-
<b>Total lease liabilities</b>	68,083	-

**Notes to the Consolidated Financial Statements for the Year Ended 30 June 2022**

	Consolidated		Consolidated	
	2022 Shares	2021 Shares	2022 \$	2021 \$
<b>16. Contributed Equity</b>				
(a) Issued and unissued				
Ordinary shares – fully paid	1,669,957,592	1,329,179,283	117,074,894	102,158,052
Total issued capital	<u>1,669,957,592</u>	<u>1,329,179,283</u>	<u>117,074,894</u>	<u>102,158,052</u>
(b) Ordinary Shares				
Ordinary shares participate in dividends and the proceeds on winding up of the Company in proportion to the number of shares held and in proportion to the amount paid up on the shares held.				
(c) Options				
Information relating to options including details of options issued, exercised and lapsed during the financial year and options outstanding at the end of the financial year, is set out in Note 17.				
(d) Movements in issued capital				
Opening Balance 1 July 2020		808,039,953		82,995,954
Exercise of Unlisted Options	3-Jul-20	1,250,000	0.001	1,250
Exercise of Unlisted Options	10-Jul-20	1,500,000	0.001	1,500
Placement	7-Aug-20	129,032,258	0.031	4,000,000
Exercise of Unlisted Options	28-Aug-20	5,477,000	0.001	5,484
Share Purchase Plan	8-Sep-20	80,644,959	0.031	2,500,000
Placement	28-Jan-21	181,818,182	0.055	10,000,249
Placement – Acuity (Nil) *	26-Feb-21	50,000,000	0.058	-
Exercise of Unlisted Options	5-Mar-21	30,000	0.052	1,560
Placement – Acuity	30-Apr-21	50,000,000	0.0633	3,165,000
Exercise of Unlisted Options	7-May-21	6,861,921	0.052	356,820
Exercise of Unlisted Options	14-May-21	6,100,000	0.06	366,000
Exercise of Unlisted Options	14-May-21	3,425,000	0.001	3,425
Exercise of Unlisted Options	14-May-21	10	0.052	1
Exercise of Unlisted Options	18-Jun-21	5,000,000	0.077	385,000
Less : transaction costs**	-	-	-	(1,624,191)
Closing Balance at 30 June 2021		<u>1,329,179,283</u>		<u>102,158,052</u>
(e) Movements in issued capital				
Opening Balance 1 July 2021		1,329,179,283		102,158,052
Exercise of Unlisted Options	16-Jul-21	500,000	0.001	500
Exercise of Unlisted Options	30-Jul-21	4,556,451	0.052	236,935
Placement	28-Sep-21	51,000,000	0.065	3,315,000
Placement - Acuity	10-Dec-21	-	0.001	2,100,000
Placement	17-Dec-21	118,055,556	0.036	4,250,000
Placement	7-Jan-22	166,666,302	0.036	5,984,653
Less: transaction costs				(970,246)
Closing Balance at 30 June 2022		<u>1,669,957,592</u>		<u>117,074,894</u>

\* Relates to collateral shares issued to Acuity Capital

\*\* Share based payment settlement to broker and underwriter with total value \$486,978 (note 18) included in the transaction costs

**Notes to the Consolidated Financial Statements for the Year Ended 30 June 2022**

Expiry date	Exercise price	Balance at start of year	Granted during the year	(Exercised) during the year	Cancelled/ lapsed during the year	Balance at end of the year	Vested and Exercisable
<b>17. Issued Share Options</b>							
<b>(a) 2022 unlisted share option details</b>							
12 Apr 23	0.1 cents	7,500,000	-	(500,000)	-	7,000,000	7,000,000
N/A <sup>1</sup>	45.0 cents	1,000,000	-	-	-	1,000,000	1,000,000
N/A <sup>2</sup>	50.0 cents	2,000,000	-	-	-	2,000,000	-
N/A <sup>3</sup>	55.0 cents	2,500,000	-	-	-	2,500,000	-
16-Oct-22	5.2 cents	18,108,069	-	(4,556,451)	-	13,551,618	13,551,618
11-Dec-23	6.0 cents	19,900,000	-	-	-	19,900,000	19,900,000
14-Jan-24	5.4 cents	-	14,444,445	-	-	14,444,445	14,444,445
		<u>51,008,069</u>	<u>14,444,445</u>	<u>(5,056,451)</u>	<u>-</u>	<u>60,396,063</u>	<u>55,896,063</u>
Weighted average exercise price		\$0.097	\$0.054	\$0.047		\$0.091	\$0.056
<b>(b) 2021 unlisted share option details</b>							
31 Aug 20	0.1 cents	3,727,000	-	(3,727,000)	-	-	-
12 Apr 23	0.1 cents	15,425,000	-	(7,925,000)	-	7,500,000	7,500,000
N/A <sup>1</sup>	45.0 cents	1,000,000	-	-	-	1,000,000	1,000,000
N/A <sup>2</sup>	50.0 cents	2,000,000	-	-	-	2,000,000	-
N/A <sup>3</sup>	55.0 cents	2,500,000	-	-	-	2,500,000	-
16-Oct-22	5.2 cents	-	25,000,000	(6,891,931)	-	18,108,069	18,108,069
11-Dec-23	6.0 cents	-	26,000,000	(6,100,000)	-	19,900,000	19,900,000
28-Jan-23	7.7 cents	-	5,000,000	(5,000,000)	-	-	-
		<u>24,652,000</u>	<u>56,000,000</u>	<u>(29,643,931)</u>	<u>-</u>	<u>51,008,069</u>	<u>46,508,069</u>
Weighted average exercise price		\$0.115	-	-		\$0.097	\$0.056

1: To vest upon successfully obtaining project financing for the Mount Lindsay Tin-Tungsten Project, expire 18 months after vesting

2: To vest upon first shipment of DSO ore, expire 18 months after vesting

3: Vest upon company announcement that it has made a decision to proceed with mining tin in Tasmania, expire 18 months after vesting

	Consolidated 2022 \$	2021 \$
<b>18. Reserves</b>		
<b>(a) Unlisted option reserve</b>		
Opening balance	1,540,268	492,401
Share based payments expense (note 26)	-	560,889
Share issue costs (note 26)	288,046	486,978
Total unlisted option reserve	<u>1,828,314</u>	<u>1,540,268</u>
The unlisted option reserve records items recognised on valuation of director, employee and contractor share options. Information relating to details of options issued, exercised and lapsed during the financial year and options outstanding at the end of the financial year, is set out in Note 17.		
<b>(b) Total reserves</b>		
Unlisted option reserve	<u>1,828,314</u>	<u>1,540,268</u>
Closing Balance	<u>1,828,314</u>	<u>1,540,268</u>

## Notes to the Consolidated Financial Statements for the Year Ended 30 June 2022

### 19. Financial Instruments, Risk Management Objectives and Policies

The Group's principal financial instruments comprise cash, short-term deposits and bonds. The main purpose of the financial instruments is to earn the maximum amount of interest at a low risk to the group and environmental bonds held for the mining tenements. The Group also has other financial instruments such as trade and other receivables and trade and other payables which arise directly from its operations. For the year under review, it has been the Group's policy not to trade in financial instruments.

The main risks arising from the Group's financial instruments are interest rate risk and credit risk, with foreign currency risk considered immaterial. The Board reviews and agrees policies for managing each of these risks and they are summarised below:

#### (a) Interest Rate Risk

The Group's exposure to interest rate risk, which is the risk that a financial instrument's value will fluctuate as a result of changes in market interest rates and the effective weighted average interest rate for each class of financial assets and financial liabilities comprises:

Consolidated	Weighted Average Interest Rate	Floating Interest Rate	Fixed Interest	Non-interest bearing	Total
	%	\$	\$	\$	\$
<b>2022</b>					
<b>Financial Assets</b>					
Cash and cash equivalents	0.05%	9,430,190	-	-	9,430,190
Trade & other receivables - current	0.00%	-	-	209,252	209,252
Trade & other receivables - non-current	0.15%	-	952,758	-	952,758
		<u>9,430,190</u>	<u>952,758</u>	<u>209,252</u>	<u>10,592,200</u>
<b>Financial Liabilities</b>					
Trade & other payables - current	0.00%	-	-	1,347,327	1,347,327
Lease liabilities	4.00%	-	68,083	-	68,083
		<u>-</u>	<u>68,083</u>	<u>1,347,327</u>	<u>1,415,410</u>

Consolidated	Weighted Average Interest Rate	Floating Interest Rate	Fixed Interest	Non-interest bearing	Total
	%	\$	\$	\$	\$
<b>2021</b>					
<b>Financial Assets</b>					
Cash and cash equivalents	0.05%	9,190,382	-	297,391	9,487,773
Trade & other receivables - current	0.00%	-	-	487,493	487,493
Trade & other receivables - non-current	1.10%	-	937,866	-	937,866
		<u>9,190,382</u>	<u>937,866</u>	<u>784,884</u>	<u>10,913,132</u>
<b>Financial Liabilities</b>					
Trade & other payables - current	0.00%	-	-	3,627,821	3,627,821
		<u>-</u>	<u>-</u>	<u>3,627,821</u>	<u>3,627,821</u>

The maturity date for all cash, current receivables and trade and other payable financial instruments included in the above tables is one year or less from balance date. The maturity for the non-current trade and other receivables is between 1 and 2 years from balance date.

## Notes to the Consolidated Financial Statements for the Year Ended 30 June 2022

### 19. Financial Instruments, Risk Management Objectives and Policies cont.

(b) **Group sensitivity analysis**

The entity's main interest rate risk arises from cash and cash equivalents with variable and fixed interest rates. At 30 June 2022, the group's exposure to interest rate risk is not considered material.

(c) **Credit risk**

Credit risk refers to the risk that counterparty will default on its contractual obligations resulting in financial loss to the group. The group has adopted the policy of only dealing with credit worthy counterparties and obtaining sufficient collateral or other security where appropriate, as a means of mitigating the risk of financial loss from defaults. The group does not have any significant credit risk exposure to any single counterparty or any group of counterparties having similar characteristics. The carrying amount of financial assets recorded in the financial statements, net of any provisions for losses, represents the group's maximum exposure to credit risk.

(d) **Liquidity risk**

The group manages liquidity risk by continuously monitoring forecast and actual cash flows and matching the maturity profiles of financial assets and liabilities. Due to the dynamic nature of the underlying businesses, the group aims at ensuring flexibility in its liquidity profile by maintaining the ability to undertake capital raisings. Funds in excess of short-term operational cash requirements are generally only invested in short term bank bills.

(e) **Net fair value**

The carrying value and net fair values of financial assets and liabilities at balance date are:

Consolidated	2022		2021	
	Carrying Amount \$	Net fair Value \$	Carrying Amount \$	Net fair Value \$
<b>Financial assets</b>				
Cash and cash equivalents	9,430,190	9,430,190	9,487,773	9,487,773
Trade & other receivables - current	209,252	209,252	487,493	487,493
Trade & other receivables - non-current	952,758	952,758	937,866	937,866
	<u>10,592,200</u>	<u>10,592,200</u>	<u>10,913,132</u>	<u>10,913,132</u>
<b>Financial Liabilities</b>				
Trade and other payables - current	1,347,327	1,347,327	3,627,821	3,627,821
Lease liabilities – current	23,381	23,381	-	-
Lease liabilities – non-current	44,702	44,702	-	-
	<u>1,415,410</u>	<u>1,415,410</u>	<u>3,627,821</u>	<u>3,627,821</u>

(f) **Commodity price risk**

The group is exposed to commodity price risk which arises from price fluctuations in the overall market. This risk has impacted the Company significantly resulting in suspension of mining operation.



**Notes to the Consolidated Financial Statements for the Year Ended 30 June 2022**

	Consolidated	
	2022	2021
	\$	\$
<b>20. Earnings per Share</b>		
(a) Earnings/(loss)		
Earnings/(loss) from continuing operations used in the calculation of basic EPS	(17,757,239)	(11,750,079)
(b) Weighted average number of ordinary shares ('WANOS')		
WANOS used in the calculation of basic earnings per share:	1,514,786,628	1,100,080,184
(c) Basic Loss Per Share	(1.17)	(1.07)

Diluted loss per share is considered to be the same as the basic loss per share, as the potential ordinary shares on issue are anti-dilutive and have not been applied in calculating dilutive loss per share.

	Consolidated	
	2022	2021
	\$	\$
<b>21. Cash Flow Information</b>		
a) Reconciliation of cash flows from operating activities with loss from ordinary activities after income tax:		
(Loss) attributable to owners after income tax	(17,757,239)	(11,750,079)
Depreciation	81,305	27,317
Share based payments	-	560,889
Interest expense	32,300	4,670
Impairment expense	11,030,324	6,435,127
Changes in assets and liabilities:		
- (Increase)/decrease in operating receivables & prepayments	324,988	(510,292)
- Increase/(decrease) in trade and other payables	(89,169)	435,667
- Increase/(decrease) in employee provisions	242,121	56,951
Net cash (outflows) from Operating Activities	(6,135,370)	(4,739,750)
a) Non-cash investing and financing		
Share-based payments expense - share issue costs	288,046	486,978
Refer to note 26 for further details.		

**Notes to the Consolidated Financial Statements for the Year Ended 30 June 2022**

	Consolidated 2022 \$	2021 \$
<b>22. Commitments</b>		
(a) Exploration and Development commitments		
Not longer than one year	2,628,929	1,966,022
Longer than one year, but not longer than five years	974,092	1,703,956
Longer than five years	-	-
	3,603,021	3,669,978
<p>In order to maintain rights of tenure to mining tenements subject to these agreements, the group would have the above discretionary exploration expenditure requirements up until expiry of leases. These obligations, which are subject to renegotiation upon expiry of the leases, are not provided for in the financial statements and are payable per the above maturities. If the company decides to relinquish certain leases and/or does not meet these obligations, assets recognised in the statement of financial position may require review to determine the appropriateness of carrying values. The sale, transfer or farm-out of exploration rights to third parties will reduce or extinguish these obligations.</p>		
(b) Non-cancellable operating lease commitments		
Not longer than one year	169,337	134,163
Longer than one year, but not longer than five years	-	-
Longer than five years	-	-
	169,337	134,163

The Company has made commitments with respect to two rental properties in Tasmania and site offices and facilities associated with its Riley Iron Ore Project. The commitments are for a period of 6 months.

The Company has entered into a non-cancellable operating lease for a storage space. The lease commitments have been accounted for as a right of use assets as at 30 June 2022 and the corresponding lease liability accounted for under AASB 16 Leases.

**23. Events Occurring After Balance Date**

On 8 July 2022, the Company issued 7,500,000 fully paid ordinary shares at a deemed issue price of \$0.03 per share in lieu of employee entitlements.

Apart from the above, there were no further material events subsequent to balance date.

## Notes to the Consolidated Financial Statements for the Year Ended 30 June 2022

### 24. Segment Information

#### (a) Description of segments

Management has determined the operating segments based on the reports reviewed by the chief operating decision maker that are used to make strategic decisions. For the purposes of segment reporting the chief operating decision maker has been determined as the board of directors. The amounts provided to the board of directors with respect to total assets and profit or loss is measured in a manner consistent with that of the financial statements. Assets are allocated to a segment based on the operations of the segment and the physical location of the asset. The board monitors the entity primarily from a geographical perspective, and has identified two operating segments, being exploration for mineral reserves and mine development within Australia, and the corporate/head office administrative function.

#### (b) Segment information provided to the board of directors

The segment information provided to the board of directors for the reportable segments is as follows:

	Exploration and Development Australia \$	Corporate \$	Total \$
<b>2022 Extract</b>			
Total segment revenue	-	13,156	13,156
Interest revenue	-	8,090	8,090
Other income	-	5,066	5,066
Depreciation and amortisation expense	28,912	52,393	81,305
Total segment loss before income tax	(15,466,188)	(2,291,051)	(17,757,239)
<b>2021 Extract</b>			
Total segment revenue	-	57,659	57,659
Interest revenue	-	6,220	6,220
Other income	-	51,439	51,439
Depreciation and amortisation expense	(2,014)	(25,303)	(27,317)
Total segment loss before income tax	(9,373,291)	(2,376,788)	(11,750,079)
<b>Total segment assets</b>			
30 June 2022	1,419,047	9,715,882	11,134,929
30 June 2021	4,844,458	11,160,980	16,005,438
<b>Total segment liabilities</b>			
30 June 2022	320,504	1,849,154	2,169,658
30 June 2021	3,579,399	908,417	4,487,816

#### (c) Measurement of segment information

All information presented in part (b) above is measured in a manner consistent with that in the financial statements.

#### (d) Segment revenue

No inter-segment sales occurred during the current or previous financial year. The entity is domiciled in Australia. No revenue was derived from external customers in countries other than the country of domicile. Revenues of \$8,090 (2021: \$6,220) were derived from one Australian financial institution during the period. These revenues are attributable to the corporate segment. During the year, the Group earned \$4,721,646 (Refer to Note 11) from iron ore sales. This was offset against development costs.

#### (e) Reconciliation of segment information

Total segment revenue, total segment profit/(loss) before income tax, total segment assets and total segment liabilities as presented in part (b) above, equal total entity revenue, total entity profit/(loss) before income tax, total entity assets and total entity liabilities respectively, as reported within the financial statements.

## Notes to the Consolidated Financial Statements for the Year Ended 30 June 2022

### 25. Related Party Transactions

(a) Parent entity

The ultimate parent entity within the group is Venture Minerals Limited.

(b) Subsidiaries

Interests in subsidiaries are set out in Note 28.

(c) Key management personnel compensations

	Consolidated	
	2022	2021
	\$	\$
Short-term employee benefits	659,584	610,286
Post-employment benefits	35,336	31,439
Long term benefits	32,670	4,604
Share-based payments	-	411,564
<b>Total key management personnel compensation</b>	<b>727,590</b>	<b>1,057,893</b>

Detailed remuneration disclosures are provided within the remuneration report which can be found on pages 25 to 32 of the Directors' report.

(d) Transactions with other related parties

The following transactions occurred with related parties:

	Consolidated	
	2022	2021
	\$	\$
<b>Recharges to director related entities (excluding GST):</b>		
Recharges to Alicanto Minerals Limited	-	2,369
Recharges of costs to Blackstone Minerals Limited	3,899	163,939
Recharges of costs to Codrus Minerals Limited	54,745	-
<b>Purchases from director related entities (excluding GST):</b>		
Recharges of shared costs from Blackstone Minerals Limited	63,952	281,798
Recharges of shared costs from Onedin Enterprises Pty Ltd	7,530	8,816
Recharges of costs to Codrus Minerals Limited	21,696	-

	Consolidated	
	2022	2021
	\$	\$
<b>Outstanding balances arising from recharges/purchases with Director Related Parties:</b>		
Current receivables	8,795	17,605
Current payables	14,667	38,012

(e) Terms and conditions of related party transactions

Transactions between related parties are on commercial terms and conditions, no more favourable than those available to other parties unless otherwise stated.

### 26. Share Based Payments

The Directors have established an Employee Incentive Option Scheme ('EIOS') in accordance with the listing rules of the ASX. The purpose of the Scheme is to give employees, directors, executive officers and consultants of the Group an opportunity, in the form of options, to subscribe for ordinary shares in the company. The Directors consider the Scheme will enable the group to retain and attract skilled and experienced employees, board members and executive officers and provide them with the motivation to make the group more successful. There were no issues made under the EIOS during the year.

## Notes to the Consolidated Financial Statements for the Year Ended 30 June 2022

### 26. Share Based Payments (continued)

#### (a) Fair value of listed options granted

The fair value of listed options granted is calculated as the market value prevailing at the date on which the options are authorised for issue. There are no listed options on issue.

#### (b) Fair value of unlisted options granted

30 June 2022

During the year, the Company issued 14,444,445 unlisted options to Corporate Advisors with an exercise price of \$0.06 expiring 7 January 2024. The total fair value of the options granted in the year was \$288,046. The fair value has been accounted for as a capital raising cost. The price was calculated by using the Black-Scholes European Option Pricing Model applying the following inputs.

- Exercise price of \$0.054;
- Average life of the option (years) of 2.10;
- Underlying share price of 0.042 at grant date;
- Expected share price volatility of 100%;
- Average risk-free interest rate of 0.55%.

Volatility is calculated based on historical share price history of the company and used as the basis for determining expected share price volatility as it assumed that this is indicative of future tender, which may not eventuate. The life of the options is agreed upon by the Board

30 June 2021

In the 30 June 2021 financial year, the Company issued 18,000,000 and 8,000,000 unlisted options to Directors and Employees respectively with an exercise price of \$0.06 expiring 11 December 2023. The total fair value of the options granted in the year was \$496,624.

In the 30 June 2021 financial year, the Company issued 25,000,000 unlisted options to Corporate Advisors as a fee for managing the Placement and managing and underwriting a portion of the Share Purchase Plan. The exercise price of the options is \$0.052 expiring 16 October 2022. The fair value of options granted was \$326,320. The fair value of these options has been accounted for as capital raising cost.

In the 30 June 2021 financial year, the Company issued 5,000,000 unlisted options to brokers as a fee for managing the Placement. The exercise price of the options is \$0.063 expiring 28 January 2023. The fair value of options granted was \$160,659.

The price was calculated by using the Black-Scholes European Option Pricing Model applying the following inputs.

No of options	18,000,000	8,000,000	25,000,000	5,000,000	2,000,000*
Grant Date of Share Price	30/11/2020	8/10/2020	16/10/2020	15/01/2021	2/02/2021
Exercise Price	0.06	0.06	0.052	0.077	0.077
Underlying Share Price	0.039	0.031	0.032	0.066	0.061
Expected Volatility	100%	100%	100%	100%	100%
Option Life	3.03	3.18	2.03	2.04	2.04
Interest Rate	0.11%	0.11%	0.17%	0.09%	0.09%
Fair Value	\$0.021	\$0.013	\$0.013	\$0.032	\$0.032

\* Not issued as at 30 June 2021 and 30 June 2022.

- Weighted average exercise price of \$0.0579;
- Weighted average life of the option (years) of 2.46;
- Weighted average underlying share price of 0.0371;
- Expected share price volatility of 100%;
- Weighted average risk-free interest rate of 0.13%.

Volatility is calculated based on historical share price history of the company and used as the basis for determining expected share price volatility as it assumed that this is indicative of future tender, which may not eventuate. The life of the options is agreed upon by the Board to ensure long term goal congruence between Directors, Management and Shareholders.

## Notes to the Consolidated Financial Statements for the Year Ended 30 June 2022

### 26. Share Based Payments (continued)

Total share-based payment transactions recognised during the year are set out below. Details of other options movements are set out in Note 16 and Note 17.

	Consolidated	
	2022	2021
	\$	\$
Unlisted options		
Options issued to directors, employees and consultants*	-	560,889
Share issue costs	288,046	486,978

\* There were 2,000,000 unlisted options that were granted to consultants that were not issued as at 30 June 2021, valued at \$64,265.

### 27. Contingent Liabilities

There are no further material changes to any commitments or contingencies since the last annual reporting date.

### 28. Subsidiaries

The consolidated financial statements incorporate the assets, liabilities and results of the following subsidiaries in accordance with the accounting policy described in note 1(b):

Name of entity	Country of incorporation	Class of shares	Equity holding <sup>A</sup>	
			2022	2021
			%	%
Venture Uranium Pty Ltd	Australia	Ordinary	100	100
Venture Z Pty Ltd	Australia	Ordinary	100	100
Venture Iron Pty Ltd	Australia	Ordinary	100	100
Venture Tasmania Pty Ltd	Australia	Ordinary	100	100
Venture T Pty Ltd	Australia	Ordinary	100	100
Venture Lithium Pty Ltd	Australia	Ordinary	100	100
Tasmanian Rare Earths Pty Ltd	Australia	Ordinary	100	-

A: The proportion of ownership interest is equal to the proportion of voting power held.



**Notes to the Consolidated Financial Statements for the Year Ended 30 June 2022**

	Company 2022 \$	2021 \$
<b>29. Parent Entity Information</b>		
(a) <b>Assets</b>		
Current assets	9,657,069	10,096,544
Non-current assets	1,260,970	5,625,680
Total assets	10,918,039	15,722,224
(b) <b>Liabilities</b>		
Current liabilities	1,454,452	2,901,667
Non-current liabilities	394,702	350,000
Total liabilities	1,849,154	3,251,667
(c) <b>Equity</b>		
Contributed equity	117,074,894	102,158,052
Accumulated losses	(109,834,323)	(91,227,763)
Reserves	1,828,314	1,540,268
Total equity	9,068,885	12,470,557
(d) <b>Total Comprehensive loss for the year</b>		
Loss for the year after income tax	(18,606,560)	(10,797,144)
Other comprehensive income for the year	-	-
Total comprehensive loss for the year	(18,606,560)	(10,797,144)
(e) <b>Contingent Liabilities of the Parent Entity</b>		
The parent entity did not have any contingent liabilities as at 30 June 2022 or 30 June 2021 other than as disclosed in Note 27.		
(f) <b>Guarantees entered into by the Parent Entity</b>		
The parent entity has not guaranteed any loans for any entity during the year.		

## Director's Declaration

In the directors' opinion:

- (a) the financial statements and notes set out on pages 37 to 68 are in accordance with the *Corporations Act 2001*, including:
  - (i) complying with Accounting Standards, the *Corporations Regulations 2001* and other mandatory professional reporting requirements; and
  - (ii) giving a true and fair view of the consolidated entity's financial position as at 30 June 2022 and of its performance for the financial year ended on that date; and
- (b) there are reasonable grounds to believe that the company will be able to pay its debts as and when they become due and payable; and
- (c) the audited remuneration disclosures set out on pages 25 to 32 of the directors' report comply with section 300A of the *Corporations Act 2001*; and
- (d) the financial statements and notes thereto are in accordance with International Financial Reporting Standards issued by the International Accounting Standards Board.

The directors have been given the declarations by the Managing Director and Chief Financial Officer required by section 295A of the *Corporations Act 2001*.

This declaration is made in accordance with a resolution of the Board of Directors.



**Andrew Radonjic**  
**Managing Director**

Perth, Western Australia, 30 September 2022

**INDEPENDENT AUDITOR'S REPORT  
TO THE MEMBERS OF  
VENTURE MINERALS LIMITED****Report on the Audit of the Financial Report****Opinion**

We have audited the financial report of Venture Minerals Limited ("the Company") and its subsidiaries ("Group"), which comprises the consolidated statement of financial position as at 30 June 2022, the consolidated statement of comprehensive income, the consolidated statement of changes in equity and the consolidated statement of cash flows for the year then ended, and notes to the financial statements, including a summary of significant accounting policies, and the directors' declaration.

In our opinion, the accompanying financial report of the Group is in accordance with the *Corporations Act 2001*, including:

- (i) giving a true and fair view of the Group's financial position as at 30 June 2022 and of its financial performance for the year then ended; and
- (ii) complying with Australian Accounting Standards and the *Corporations Regulations 2001*.

**Basis for Opinion**

We conducted our audit in accordance with Australian Auditing Standards. Our responsibilities under those standards are further described in the Auditor's Responsibilities for the Audit of the Financial Report section of our report. We are independent of the Group in accordance with the auditor independence requirements of the *Corporations Act 2001* and the ethical requirements of the Accounting Professional and Ethical Standards Board's APES 110 *Code of Ethics for Professional Accountants (the Code)* that are relevant to our audit of the financial report in Australia. We have also fulfilled our other ethical responsibilities in accordance with the Code.

We believe that the audit evidence we have obtained is sufficient and appropriate to provide a basis for our opinion.

**Key Audit Matters**

We have defined the matters described below to be the key audit matters to be communicated in our report.

Key audit matters are those matters that, in our professional judgement, were of most significance in our audit of the financial report of the current period. These matters were addressed in the context of our audit of the financial report as a whole, and in forming our opinion thereon, and we do not provide a separate opinion on these matters.

**Key Audit Matters**
**How the matter was addressed in the audit**
**Accounting for Mine Development Expenditure  
(Refer to Notes 1(m) and 11 of the financial report).**

During the year, the Company continued with development activities relating to the Riley Iron Ore Mine located in Northwest Tasmania. The Company decided to suspend the Riley Iron Ore mine operations in September 2021. The amounts received from the first shipment of ore to September 2021, amounting to \$4,721,646, was applied against development costs. The net development costs amounting to \$6,471,588 have been written off to the profit or loss.

Mine Development Expenditure is a key audit matter due to:

- The significance of the impairment of the Mine Development Expenditure (representing 36% of the total loss after income tax); and
- Management's judgment in determining completion of the exploration stage at the Riley iron Ore Project, the subsequent decision to suspend mining operations, resulting in the impairment of development costs (and other mine properties).

Inter alia, our audit procedures included the following:

- i. Assessing the Group's right to tenure over areas of interest by corroborating the ownership of the relevant licences for mineral resources to government registries and relevant third-party documentation;
- ii. Reviewing ASX announcements, minutes and discussing with the Management to confirm Board's intention in relation to mining operations at the Riley Iron Ore Project;
- iii. Obtaining the sales contract and assessing key terms of the sale, and its application against mine development expenditure;
- iv. Testing, on a sample basis, the accuracy of expenditure incurred in the year;
- v. Reviewing the directors' assessment of the carrying value of mine development expenditure at the date of cessation of mining operation at the Riley Iron Ore project, ensuring the veracity of the data presented and assessing management's consideration of impairment indicators and the resulting impairment of the mine development costs; and
- vi. Assessing the accuracy of disclosures made by the Group in the financial report.

**OTHER INFORMATION**

The directors are responsible for the other information. The other information comprises the information included in the Company's annual report for the year ended 30 June 2022 but does not include the financial report and our auditor's report thereon.

Our opinion on the financial report does not cover the other information and accordingly we do not express any form of assurance conclusion thereon.

In connection with our audit of the financial report, our responsibility is to read the other information and, in doing so, consider whether the other information is materially inconsistent with the financial report or our knowledge obtained in the audit or otherwise appears to be materially misstated. If, based on the work we have performed, we conclude that there is a material misstatement of this other information, we are required to report that fact. We have nothing to report in this regard.



## **Responsibilities of the Directors for the Financial Report**

The directors of the Company are responsible for the preparation of the financial report that gives a true and fair view in accordance with Australian Accounting Standards and the *Corporations Act 2001* and for such internal control as the directors determine is necessary to enable the preparation of the financial report that gives a true and fair view and is free from material misstatement, whether due to fraud or error.

In preparing the financial report, the directors are responsible for assessing the ability of the Group to continue as a going concern, disclosing, as applicable, matters related to going concern and using the going concern basis of accounting unless the directors either intend to liquidate the Group or to cease operations, or has no realistic alternative but to do so.

## **Auditor's Responsibilities for the Audit of the Financial Report**

Our objectives are to obtain reasonable assurance about whether the financial report as a whole is free from material misstatement, whether due to fraud or error, and to issue an auditor's report that includes our opinion. Reasonable assurance is a high level of assurance but is not a guarantee that an audit conducted in accordance with the Australian Auditing Standards will always detect a material misstatement when it exists. Misstatements can arise from fraud or error and are considered material if, individually or in the aggregate, they could reasonably be expected to influence the economic decisions of users taken on the basis of this financial report.

As part of an audit in accordance with Australian Auditing Standards, we exercise professional judgement and maintain professional scepticism throughout the audit. An audit involves performing procedures to obtain audit evidence about the amounts and disclosures in the financial report.

The procedures selected depend on the auditor's judgement, including the assessment of the risks of material misstatement of the financial report, whether due to fraud or error. In making those risk assessments, the auditor considers internal control relevant to the entity's preparation of the financial report that gives a true and fair view in order to design audit procedures that are appropriate in the circumstances, but not for the purpose of expressing an opinion on the effectiveness of the entity's internal control.

The risk of not detecting a material misstatement resulting from fraud is higher than for one resulting from error, as fraud may involve collusion, forgery, intentional omissions, misrepresentations, or the override of internal control.

An audit also includes evaluating the appropriateness of accounting policies used and the reasonableness of accounting estimates made by the Directors, as well as evaluating the overall presentation of the financial report.

We conclude on the appropriateness of the Directors' use of the going concern basis of accounting and, based on the audit evidence obtained, whether a material uncertainty exists related to events or conditions that may cast significant doubt on the Group's ability to continue as a going concern. If we conclude that a material uncertainty exists, we are required to draw attention in our auditor's report to the related disclosures in the financial report or, if such disclosures are inadequate, to modify our opinion. Our conclusions are based on the audit evidence obtained up to the date of our auditor's report. However, future events or conditions may cause the Company to cease to continue as a going concern.

We evaluate the overall presentation, structure and content of the financial report, including the disclosures, and whether the financial report represents the underlying transactions and events in a manner that achieves fair presentation.

We obtain sufficient appropriate audit evidence regarding the financial information of the entities or business activities within the Group to express an opinion on the financial report. We are responsible for the direction, supervision and performance of the audit. We remain solely responsible for our audit opinion.

We communicate with the Directors regarding, among other matters, the planned scope and timing of the audit and significant audit findings, including any significant deficiencies in Internal control that we identify during our audit.



The Auditing Standards require that we comply with relevant ethical requirements relating to audit engagements. We also provide the Directors with a statement that we have complied with relevant ethical requirements regarding independence, and to communicate with them all relationships and other matters that may reasonably be thought to bear on our independence, and where applicable, related safeguards.

From the matters communicated with the Directors, we determine those matters that were of most significance in the audit of the financial report of the current period and are therefore key audit matters. We describe these matters in our auditor's report unless law or regulation precludes public disclosure about the matter or when, in extremely rare circumstances, we determine that a matter should not be communicated in our report because the adverse consequences of doing so would reasonably be expected to outweigh the public interest benefits of such communication.

### **Report on the Remuneration Report**

#### *Opinion on the Remuneration Report*

We have audited the Remuneration Report included in pages 25 to 32 of the directors' report for the year ended 30 June 2022.

In our opinion, the Remuneration Report of Venture Minerals Limited for the year ended 30 June 2022 complies with section 300A of the *Corporations Act 2001*.

#### *Responsibilities*

The directors of the Company are responsible for the preparation and presentation of the Remuneration Report in accordance with section 300A of the *Corporations Act 2001*. Our responsibility is to express an opinion on the Remuneration Report, based on our audit conducted in accordance with Australian Auditing Standards.

### **STANTONS INTERNATIONAL AUDIT AND CONSULTING PTY LTD (An Authorised Audit Company)**

*Stantons International Audit & Consulting Pty Ltd*

A handwritten signature in blue ink that reads "Martin Michalik".

**Martin Michalik**  
Director

West Perth, Western Australia  
30 September 2022



## Additional Shareholder Information

### Corporate Governance Statement

In accordance with ASX Listing Rule 4.10.3 the company's Corporate Governance Statement can be found on the Company's website.

### Distribution of equity securities

Analysis of numbers of equity security holders by size of holding as at 16 September 2022 were as follows:

Holding	Fully Paid Ordinary Shares
1- 1,000	213
1,001 - 5,000	663
5,001 - 10,000	888
10,001 - 100,000	4,133
100,001 and over	2,198
	<u>8,095</u>

Holders of less than a marketable parcel: 2,412

### Substantial Shareholders

The names of the substantial shareholders as at 16 September 2022:

Shareholder	Number
Nil	-

### Voting Rights - Ordinary Shares

In accordance with the holding company's Constitution, on a show of hands every member present in person or by proxy or attorney or duly authorised representative has one vote. On a poll every member present in person or by proxy or attorney or duly authorised representative has one vote for every fully paid ordinary share held.

### Options

	Exercise price	Vesting conditions	Expiry date	Number of options	Number of holders
Unlisted options	\$0.001	-	12 April 2023	7,000,000	4
Unlisted options	\$0.50	To vest upon first shipment of DSO ore	18 months after vesting	2,000,000	1
Unlisted options	\$0.55	Vest upon company announcement that it has made a decision to proceed with mining tin in Tasmania	18 months after vesting	2,500,000	1
Unlisted options	\$0.45	To vest upon successfully obtaining project financing for the Mt Lindsay Tin/Tungsten Project	18 months after vesting	1,000,000	1
Unlisted options	\$0.052	-	16 October 2022	13,551,618	20
Unlisted options	\$0.06	-	11 December 2023	19,900,000	7
Unlisted options	\$0.054	-	14 January 2024	14,444,445	33

### Equity security holders

The names of the twenty largest ordinary fully paid shareholders as at 16 September 2022 are as follows:

Shareholder	Number	% Held of Issued Ordinary Capital
ELPHINSTONE HOLDINGS PTY LTD	52,621,450	3.14%
WGS PTY LTD	43,888,888	2.62%
CITICORP NOMINEES PTY LIMITED	35,107,090	2.09%
MR MALCOLM JOHN MCCLURE	21,427,423	1.28%
MR HAMISH PETER HALLIDAY	16,417,500	0.98%
HSBC CUSTODY NOMINEES (AUSTRALIA) LIMITED	15,494,979	0.92%
BNP PARIBAS NOMS PTY LTD <DRP>	13,736,030	0.82%
AS TRADING PTY LTD	12,644,165	0.75%
ALFREDSTONN HOLDINGS PTY LTD <J PRINCE SUPERANNUATION A/C>	12,092,741	0.72%
BNP PARIBAS NOMINEES PTY LTD <IB AU NOMS RETAILCLIENT DRP>	11,198,346	0.67%
MR YUNG WING HO & MRS KATHERINE KAM LING HO <VIC & KATHY SUPER FUND A/C>	10,814,010	0.64%
MR IAN EVANS & MRS LUCENA EVANS <TAF SUPERANNUATION FUND A/C>	10,053,819	0.60%
BOFFA CORPORATION PTY LTD <BOFFA SUPER FUND A/C>	10,000,000	0.60%
MR GREGORY JAMES DONNELLAN HAWKSBURN CAPITAL PTE LTD <METHUSELAH STRATEGIC FND A/C>	10,000,000	0.60%
ALLOY INDUSTRIES PTY LTD	9,534,335	0.57%
MALDEW HOLDINGS PTY LTD <MALDEW HOLDINGS P/L S/F A/C>	9,250,726	0.55%
MR PHILLIP ALLAN CUNNINGHAM	9,200,000	0.55%
MRS FRANCES ELIZABETH CUNNINGHAM	9,000,000	0.54%
MR DAVID WILLIAM BURKITT	8,500,000	0.51%
BOFFA CORPORATION PTY LTD <BOFFA FAMILY ACCOUNT>	8,000,000	0.48%
MR MARK JOHN PERNELL & MS NIINA JOHANNA HAKAKORPI <MARNII SUPER FUND A/C>	7,958,530	0.47%
	346,140,032	20.63%

**Schedule of Tenements as at 16 September 2022**

<i>Project</i>	<i>Location</i>	<i>Tenement</i>	<i>Interest</i>
Mount Lindsay	Tasmania	3M/2012	100%
	Tasmania	5M/2012	100%
	Tasmania	7M/2012	100%
	Tasmania	EL21/2005	100%
	Tasmania	EL72/2007	100%
	Tasmania	EL45/2010	100%
	Tasmania	EL1/2019	100%
Golden Grove North	Western Australia	P59/2116	100%
	Western Australia	E59/2243	100%
	Western Australia	E59/2244	100%
	Western Australia	E59/2285	95% <sup>1</sup>
	Western Australia	E59/2288	100%
	Western Australia	E59/1989	0% <sup>2</sup>
	Western Australia	E59//2506	0% <sup>2</sup>
South West WA	Western Australia	E70/4837	100% <sup>3</sup>
	Western Australia	E70/5067	100% <sup>3</sup>
	Western Australia	E70/5421	100% <sup>3</sup>
Kulin	Western Australia	E70/5077	100%
	Western Australia	E70/5084	51% <sup>4</sup>
	Western Australia	E70/5779	100%
	Western Australia	E70/5801	100%
Bottle Creek North	Western Australia	P29/2425	100%
	Western Australia	P29/2426	100%
	Western Australia	P29/2427	100%
Perrinvale South	Western Australia	E29/1076	100%
	Western Australia	E29/1077	100%
Yalgoo East	Western Australia	E59/2711	100%

<sup>1</sup> A 5% interest is held by Galahad Resources Pty Ltd with Venture potentially earning up to 100%.

<sup>2</sup> Venture Minerals is earning up to 90% interest from Bright Point Gold Pty Ltd on E59/1989 with a 10% interest held by Bright Point Gold. Once Venture has earned a 90% interest, Bright Point must elect to either contribute or dilute to a royalty of 1% NSR.

<sup>3</sup> Chalice Mining Limited (ASX:CHN) has signed an earn-in agreement with Venture Minerals Limited, with right to earn up to a 70% interest.

<sup>4</sup> Venture has the right to earn in to 80% interest from Exactical Pty Ltd. Exactical can elect to contribute or dilute to royalty of 2%

**Key**

EL

or E: Exploration Licence or Lease

P Prospecting Lease

M: Mining Lease