



ASX: CUL

Strategic Positions In Key Mineralised Provinces

Targeting Gold/Base Metals/PGE/Lithium

Chris Ringrose, Managing Director, CULLEN RESOURCES LIMITED

Contact : 0439 843 756



CORPORATE PRESENTATION
October 2022

DISCLAIMER

IMPORTANT NOTICE

This presentation has been prepared by Cullen Resources Limited ACN 006 045 790 (Cullen) for general information purposes only. The presentation is not and should not be considered as an offer or invitation to subscribe for or purchase any securities in Cullen, or as an inducement to make an offer or invitation with respect to those securities. No agreement to subscribe for securities in Cullen will be entered into on the basis of this presentation.

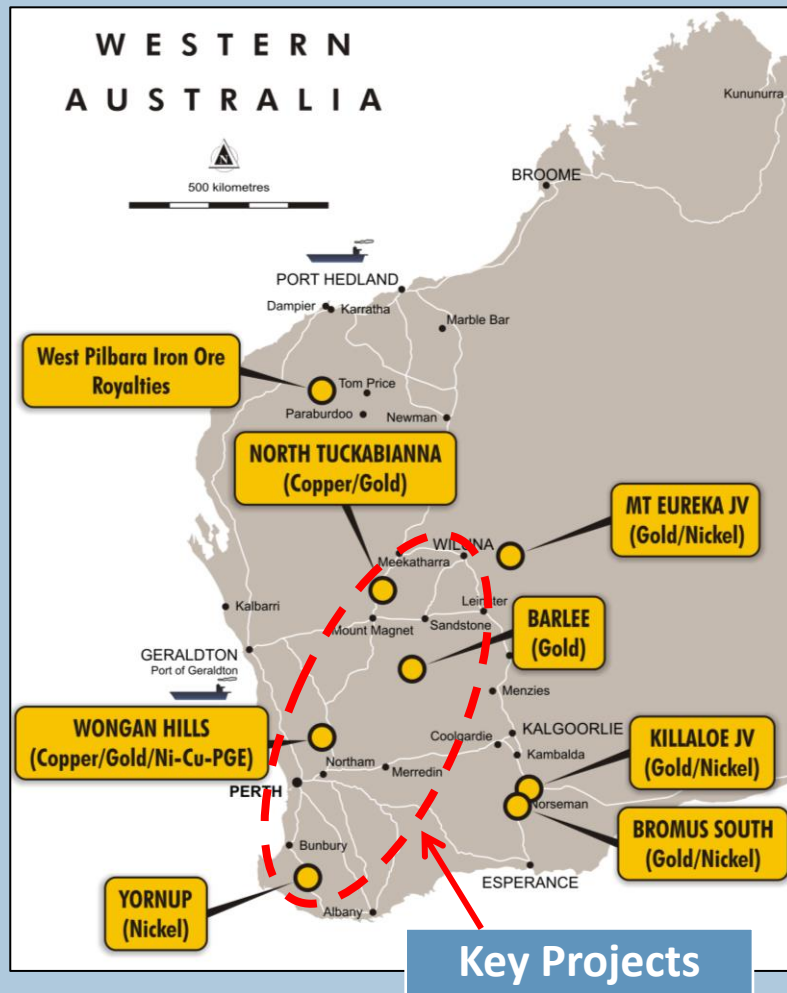
FORWARD-LOOKING STATEMENTS

This presentation may contain certain forward-looking statements which have not been based solely on historical facts but rather on Cullen's expectations about future events and on a number of assumptions which are subject to significant risks, uncertainties and contingencies many of which are outside the control of Cullen and its directors, officers and advisers. Forward-looking statements include, but are not necessarily limited to, statements concerning Cullen's planned exploration program, strategies and objectives of management, anticipated dates and expected costs or outputs. When used in this document, words such as "could", "plan", "estimate", "expect", "intend", "may", "potential", "should" and similar expressions are forward-looking statements. Due care and attention has been taken in the preparation of this document and although Cullen believes that its expectations reflected in any forward looking statements made in this document are reasonable, no assurance can be given that actual results will be consistent with these forward-looking statements. This document should not be relied upon as providing any recommendation or forecast by Cullen or its directors, officers or advisers. To the fullest extent permitted by law, no liability, however arising, will be accepted by Cullen or its directors, officers or advisers, as a result of any reliance upon any forward looking statement contained in this document.

ATTRIBUTION – COMPETENT PERSON STATEMENT

Information in this presentation may reflect past exploration results, and Cullen's assessment of exploration completed by past explorers, which was first prepared and disclosed under JORC Code 2004. It has not been updated since to comply with JORC Code 2012 on the basis that the information has not changed materially since it was last reported. The information in this report that relates to Exploration Results is based on information compiled by Dr Chris Ringrose, Managing Director, Cullen Resources Limited who is a Member of the Australasian Institute of Mining and Metallurgy. Dr Ringrose is a full time employee of Cullen Resources Limited. He has sufficient experience which is relevant to the style of mineralisation and types of deposits under consideration, and to the activity which has been undertaken, to qualify as a Competent Person as defined by the 2012 edition of the 'Australasian Code for Reporting of Exploration Results, Mineral Resources and Ore Reserves'. Dr Ringrose consents to the report being issued in the form and context in which it appears. The Company confirms that it is not aware of any new information or data which materially affects the information included in this presentation.

LOCATION PLAN



PROJECTS, JV'S & ASSETS

DRILL-READY TARGETS: GOLD – BASE METALS W.A.

North Tuckabianna (100%), Cue

- Wongan Hills (90%), West Yilgarn Province
- Barlee (100%), SE of Youanmi

PROJECT GENERATION / EARLY STAGE (100%)

- Bromus, SE W.A.
- Yornup, SW W.A.
- Central Wheatbelt, East of Wongan Hills

CURRENT JOINT VENTURES

Mt Eureka JV,
Rox (RXL) – to 75%

- Killaloe JV,
Lachlan Star (LSA) – 80%
- Finland Projects
(Capella) – 70%

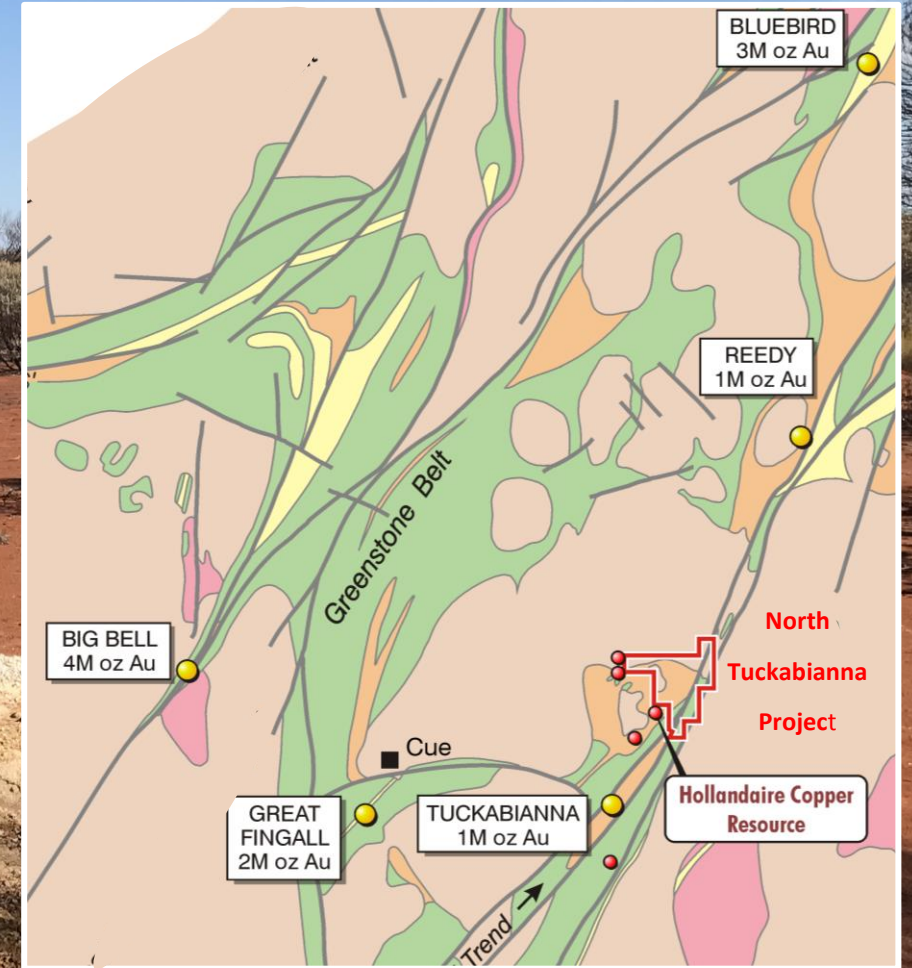
IRON ORE ROYALTIES – WEST PILBARA

Potential future cash flow from:

- Wyloo, in Fortescue's Western Hub (*Eliwana*)
- Catho Well
Iron Ore Deposit (*API*)

NORTH TUCKABIANNA PROJECT

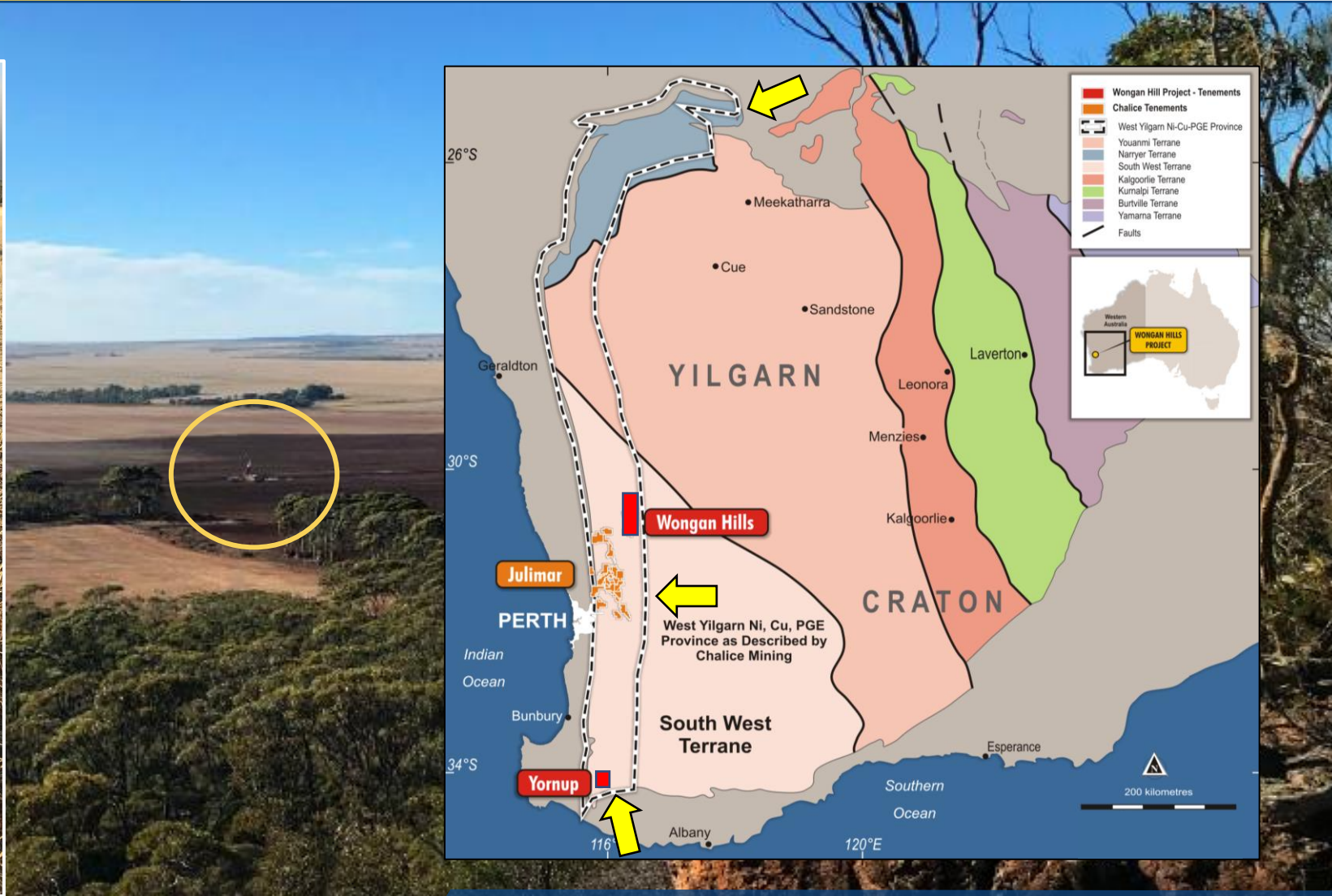
Murchison Gold Province, W.A.



Targeting Cu-Au (Hollandaire-style) & Shear Zone Au

WONGAN HILLS & YORNUP PROJECTS

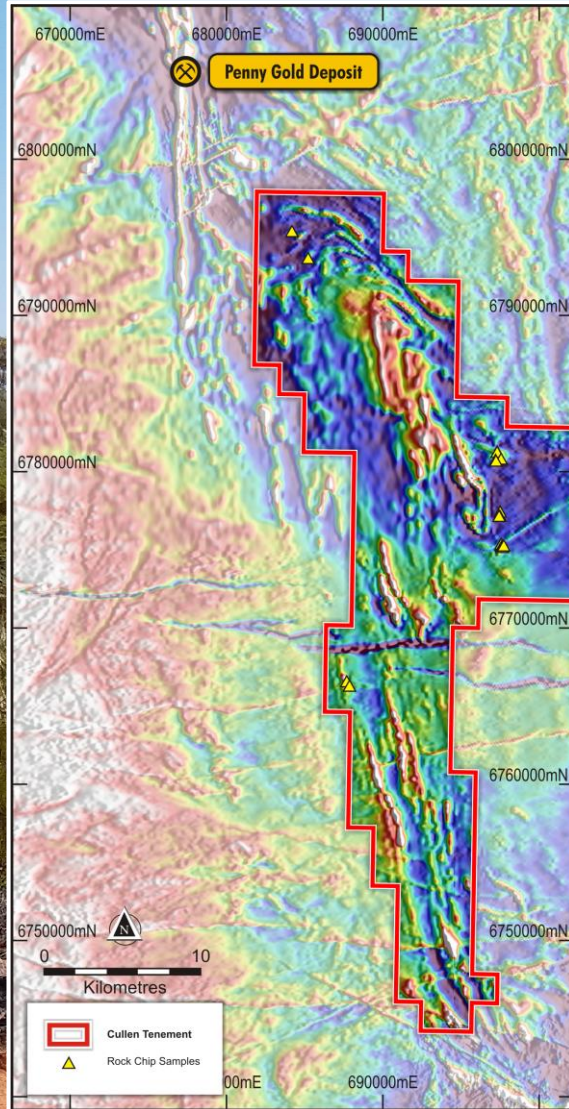
West Yilgarn Ni-Cu-PGE Province, W.A.



Targeting Ni-Cu-PGE and VHMS mineralisation

BARLEE PROJECT, YOUANMI, W.A.

~50km of strike SE of
Youanmi Greenstone Belt, W.A.



Targeting Penny-type Au & Lithium in Pegmatites

✓ **Greenfields Explorer**

✓ **Focused in WA**

✓ **Project Generator**

✓ **JV's in WA and Finland**



Directors

Dr Chris Ringrose, *Managing Director*

Mr John Horsburgh, *Chairman*

Mr Wayne Kernaghan, *Company Secretary*

Capital

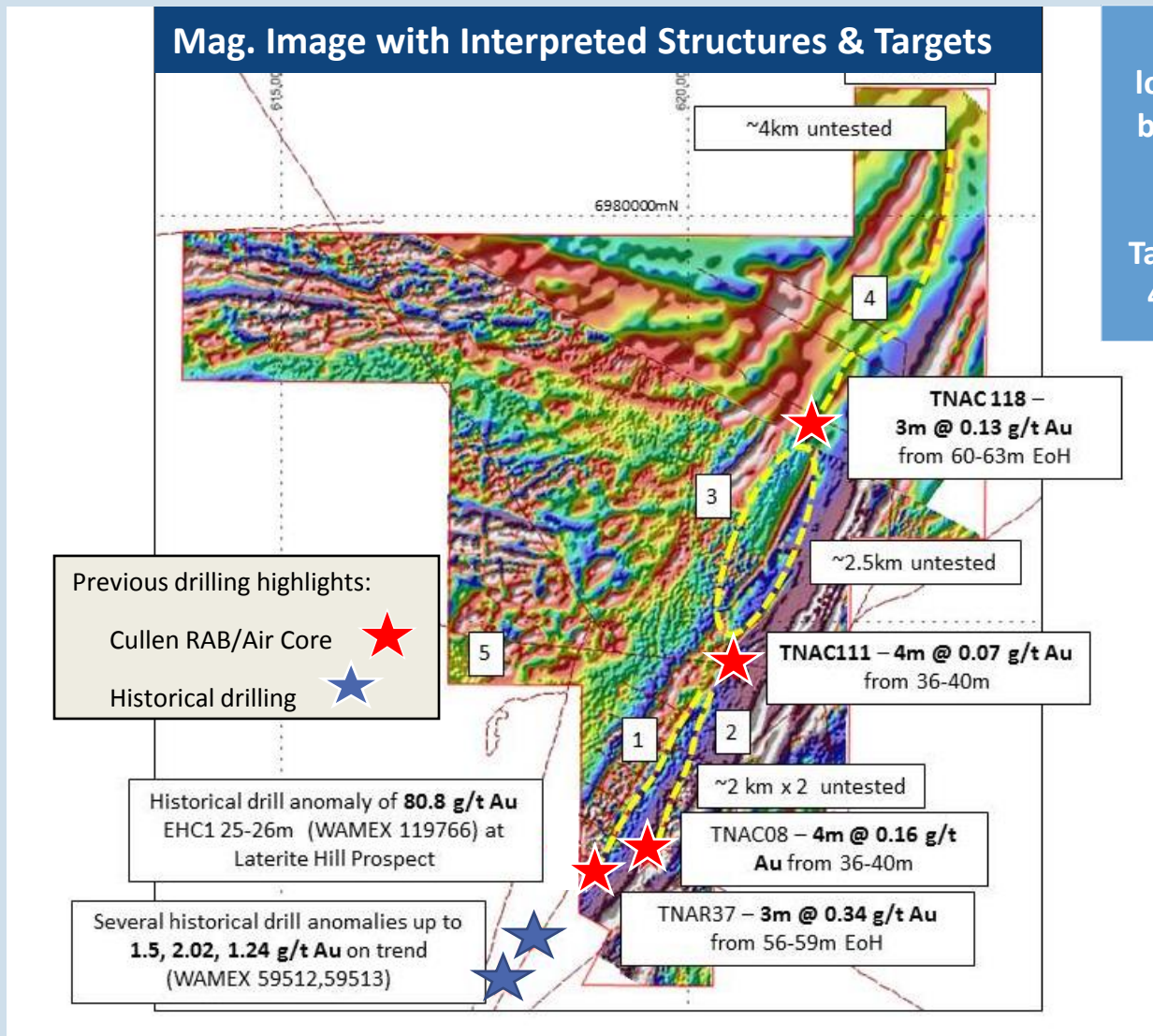
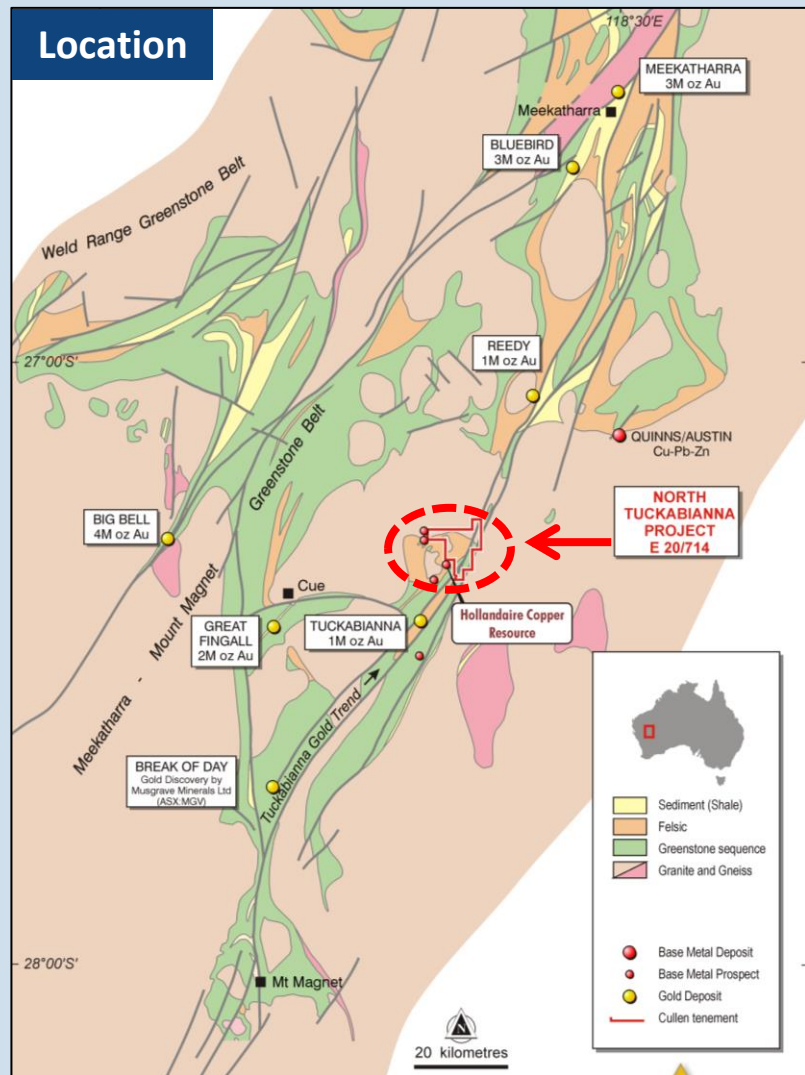
Number of Shares	407M
Cash	~\$0.6M (30/6/2022)
Market Cap	~\$6.1M (@ 1.4c)

Major Shareholders

Perth Capital + Associates	~ 11%
Directors	~ 7.1%
Top 20	~ 43%

NORTH TUCKABIANNA PROJECT

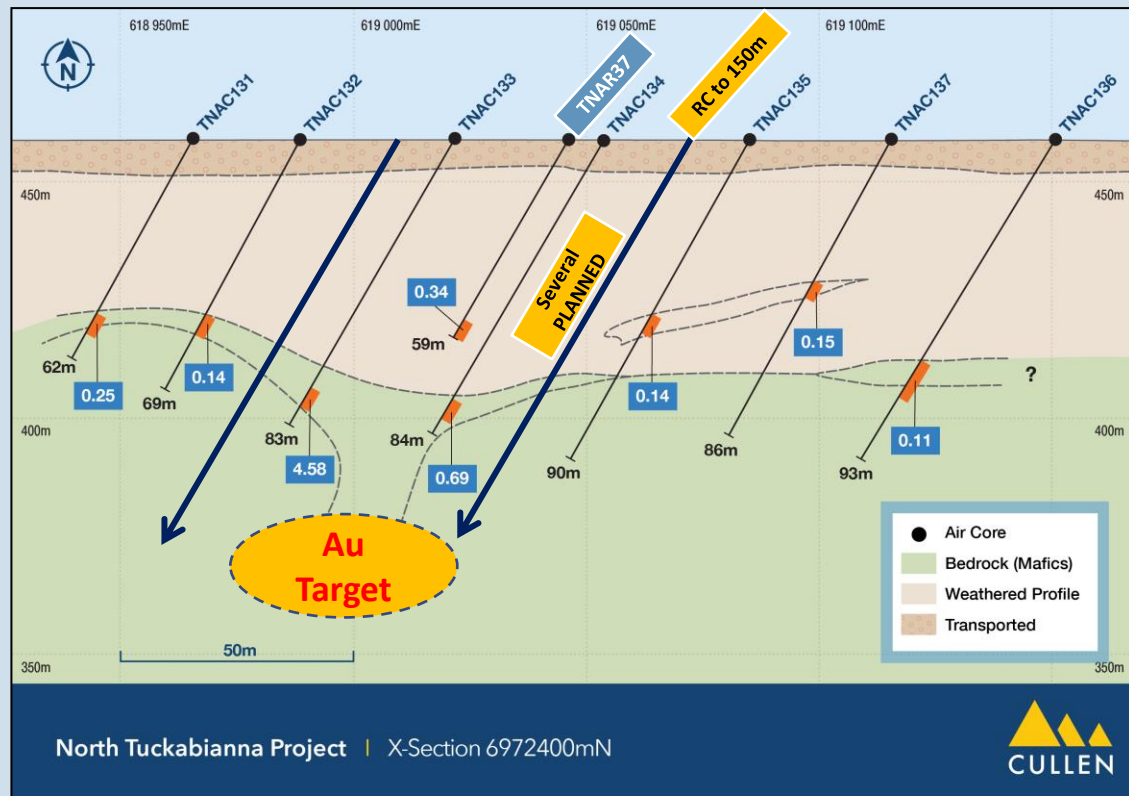
Poised for Gold Discovery – Au anomalous shear zone system



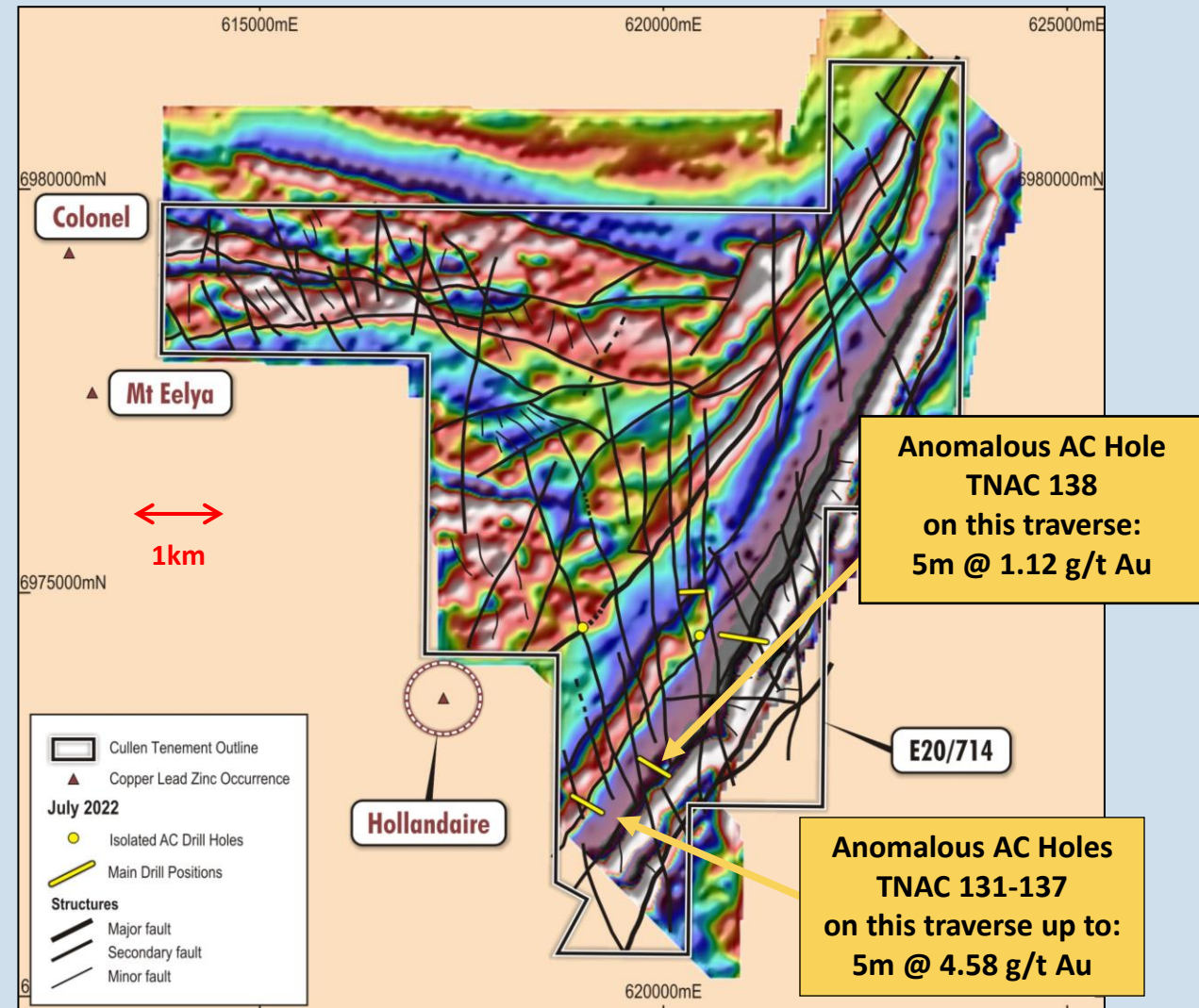
AC drilling targeting low-grade Au anomalies below blade refusal and untested stratigraphy striking NE-SW:
Target Area 1 hit – 5m @ 4.58 g/t Au (July 2022)

NORTH TUCKABIANNA PROJECT

Encouraging air core results :
Follow-up RC Planned - Au target at depth

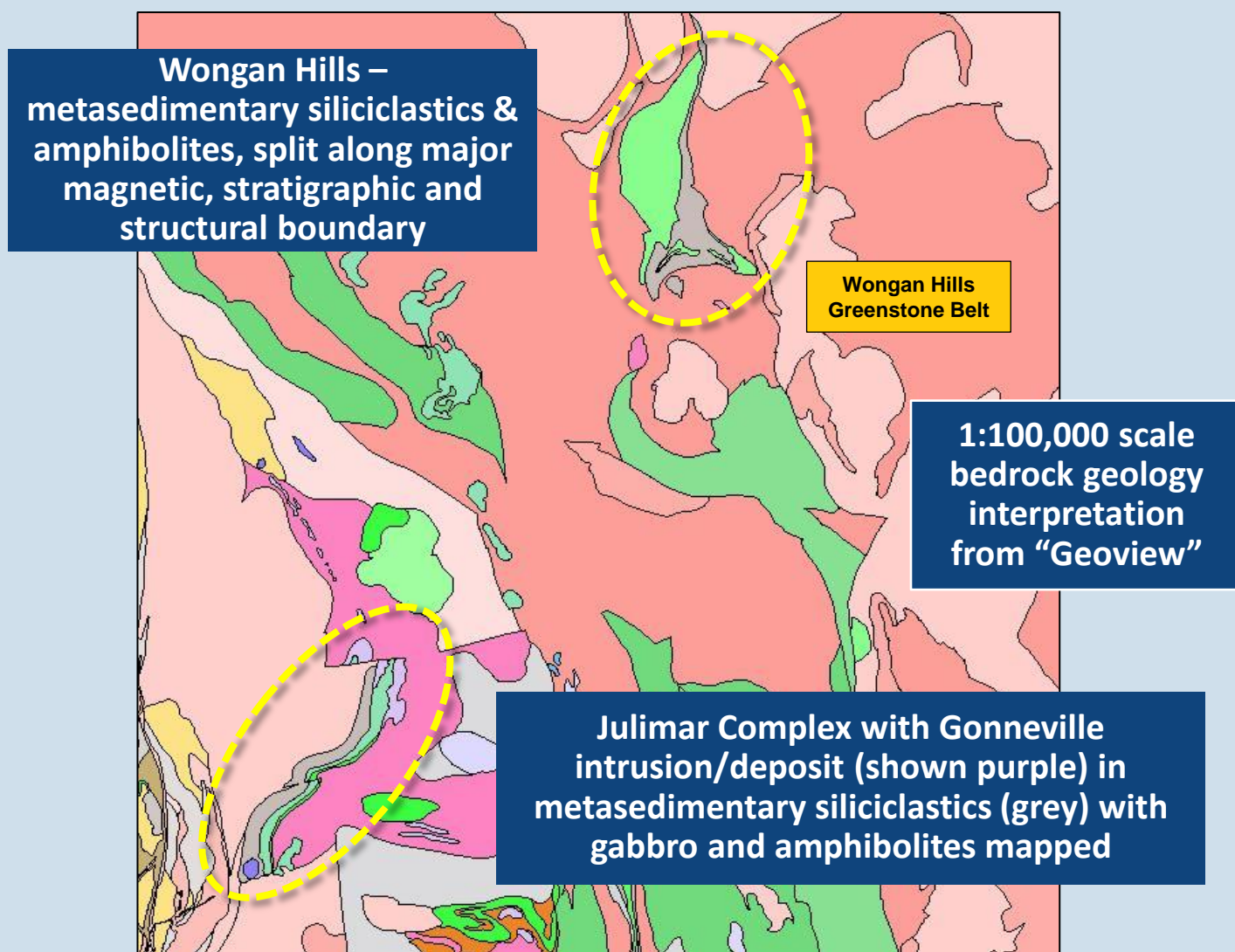
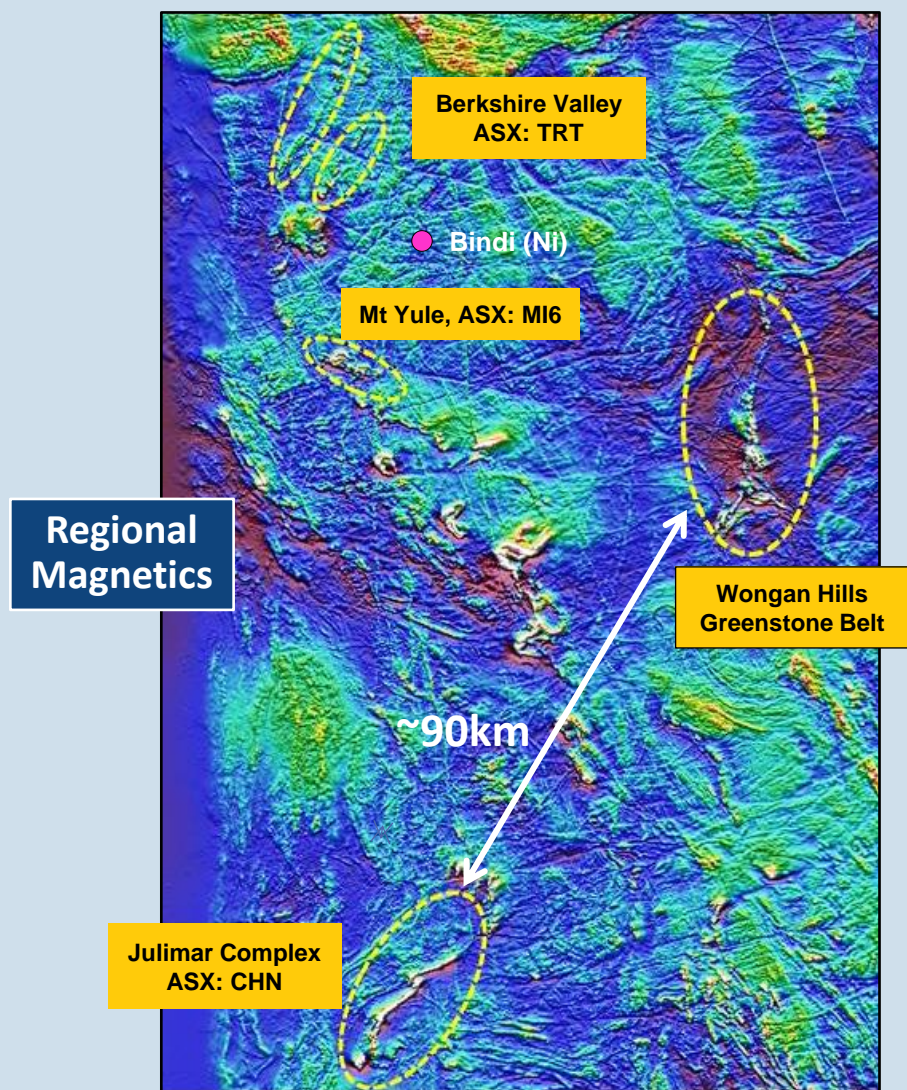


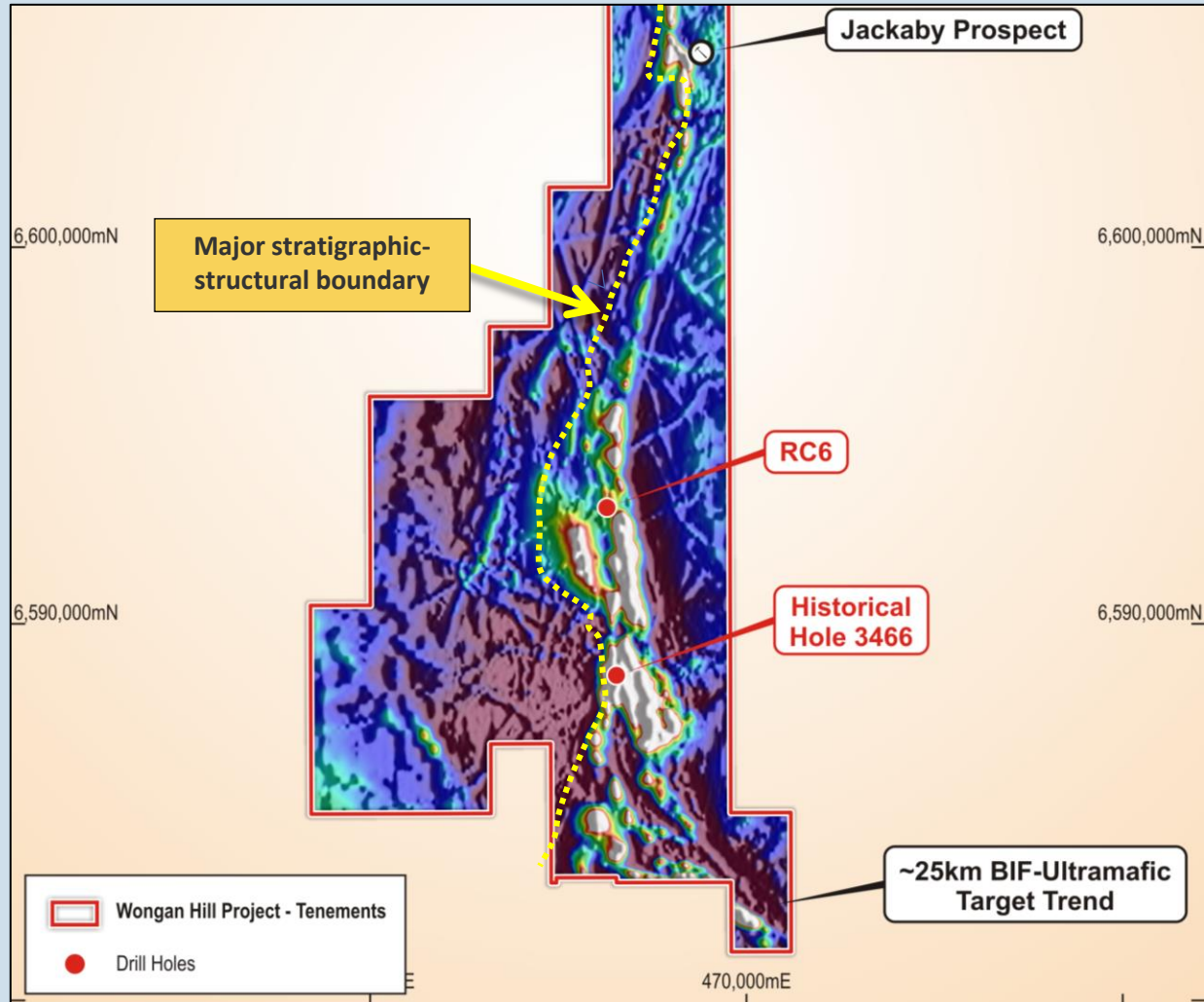
July 2022 AC drilling targeted low-grade Au anomalies below **TNAR37** and untested stratigraphy striking NE-SW:
Target Area 1 – 5m @ 4.58 g/t Au (July 2022)



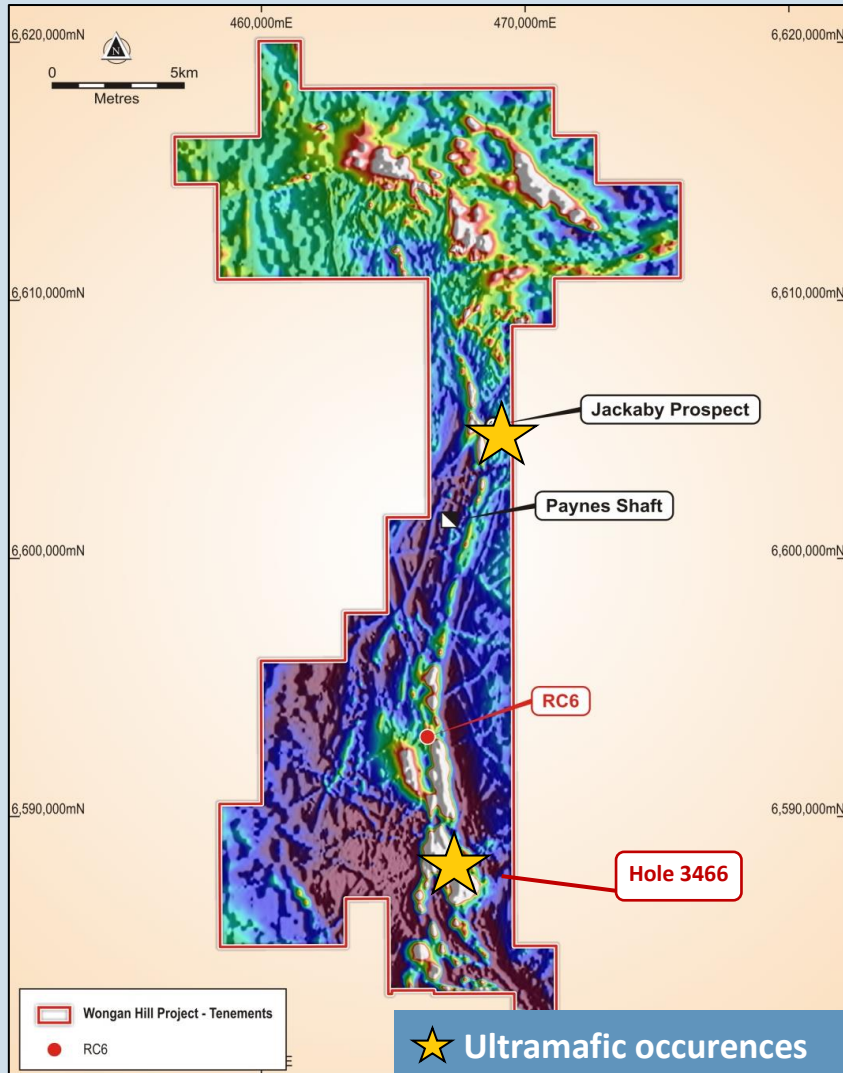
WONGAN HILLS GREENSTONE BELT

Broadly Similar Geology to Julimar Complex



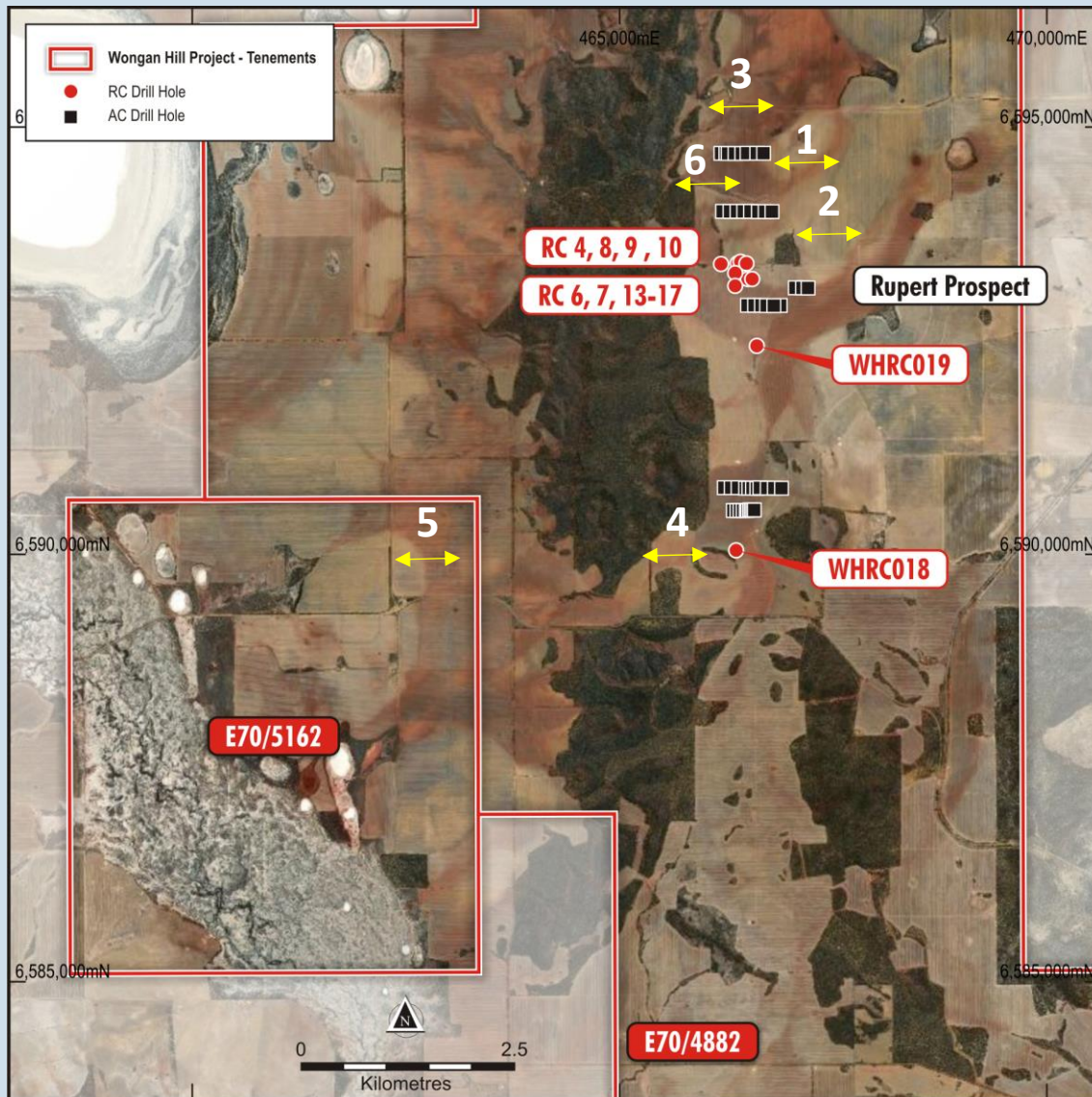


- Western part of greenstone belt (generally low magnetic response) dominantly amphibolite after basalts, and metasedimentary siliciclastics.
- Eastern, magnetic greenstone belt comprises meta: ultramafics, basalts, dolerites, sedimentary siliciclastics, BIF, minor gabbro, and felsic volcanics.
- Both east and west underlain by late-stage granitoids at depth.
- In the **Julimar Complex** “regional structures demarcate a greenstone sequence” hosting the Gonnevile intrusion (ASX:CHN, 6-9-2022), thus - **magnetic anomalies** close to major stratigraphic /structural boundaries **at Wongan Hills** are specific targets of interest.

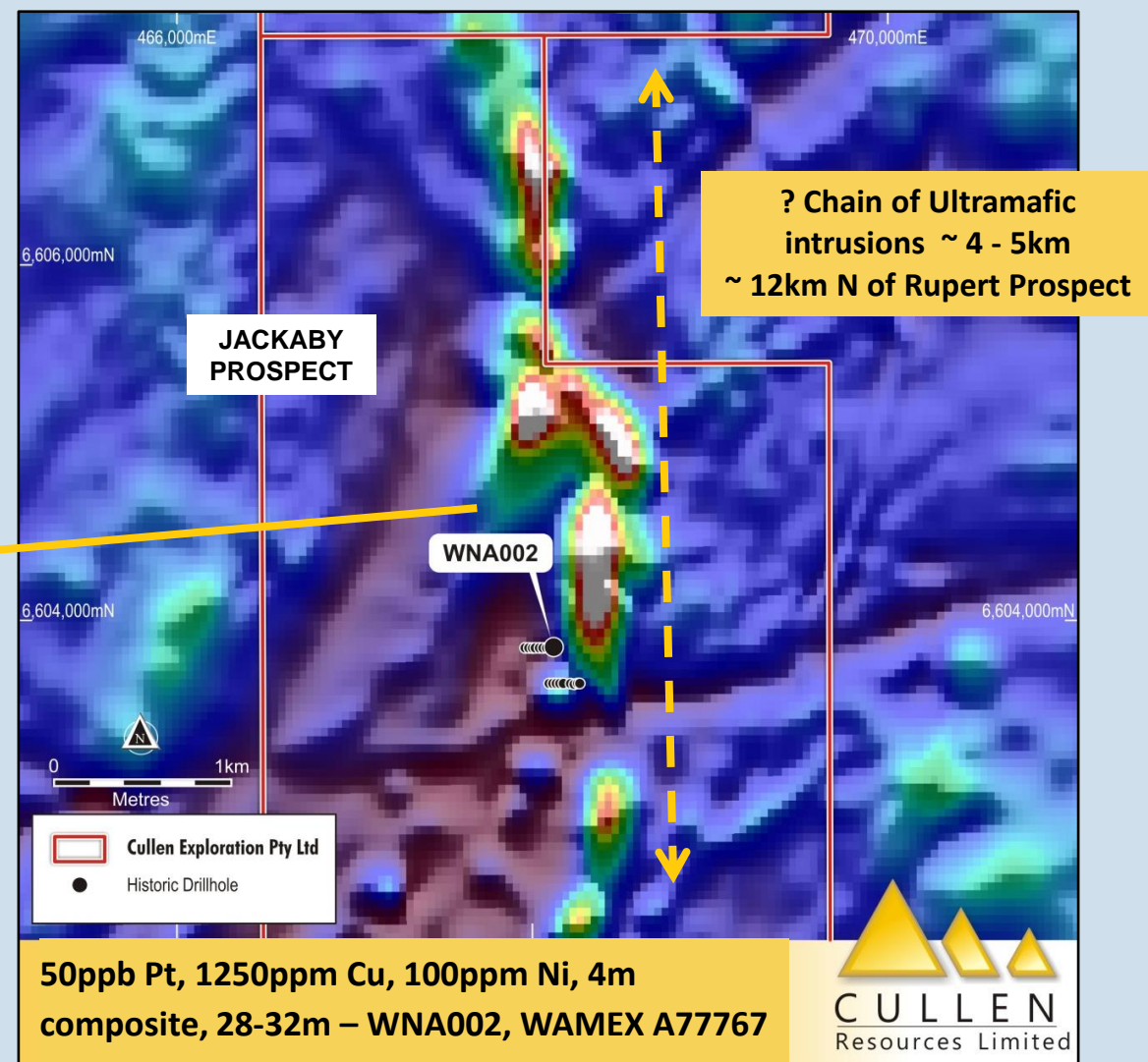
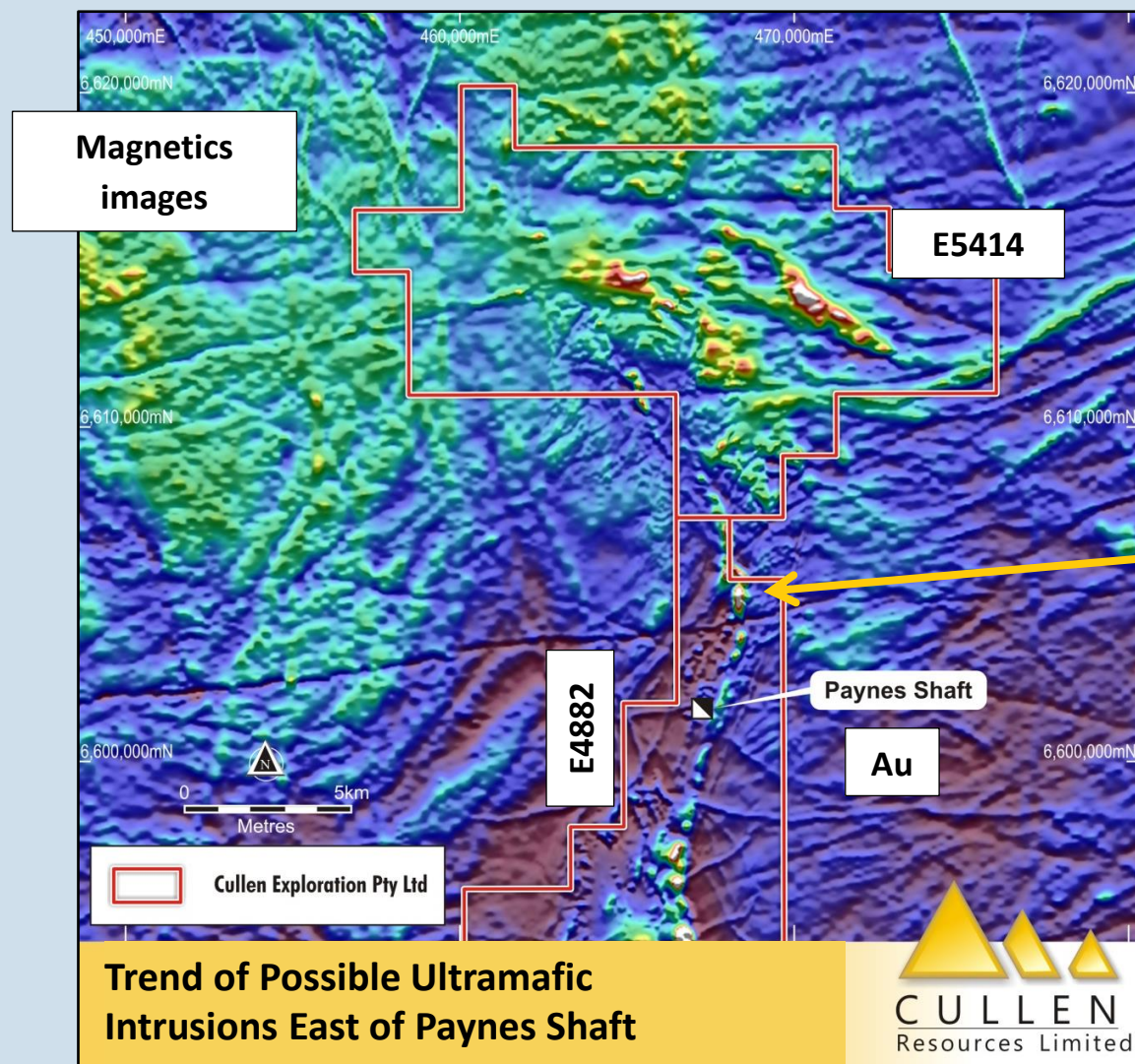


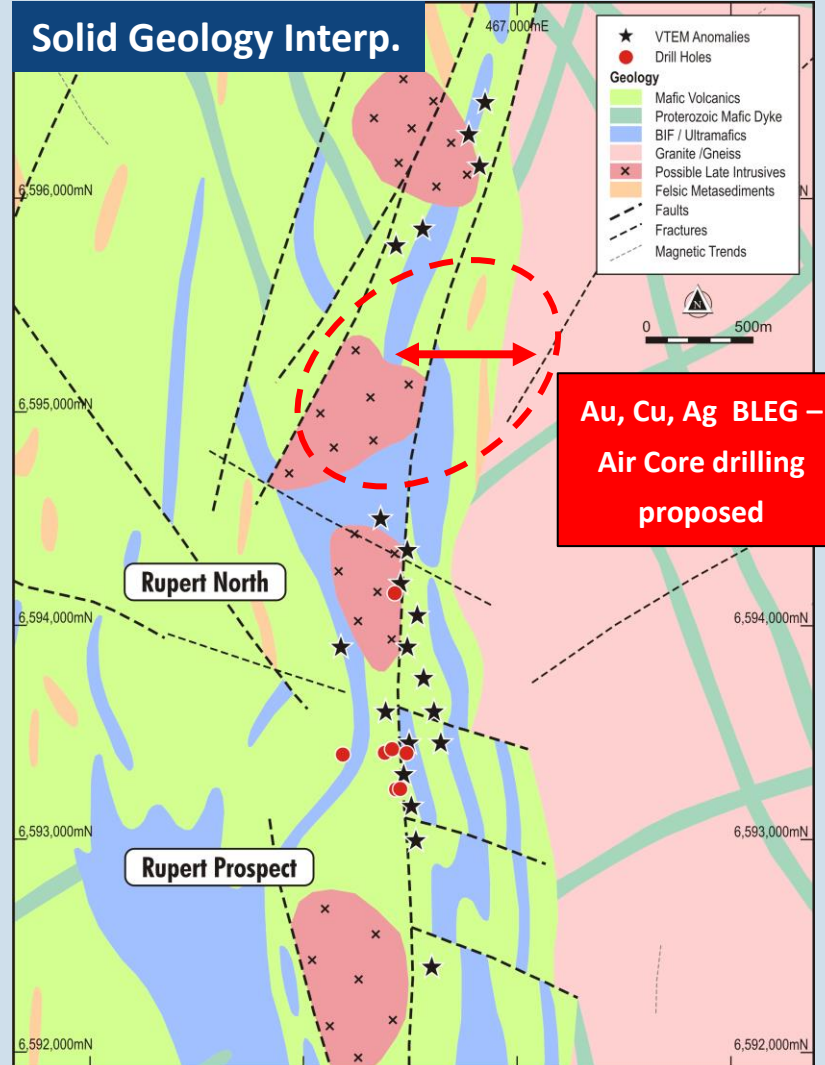
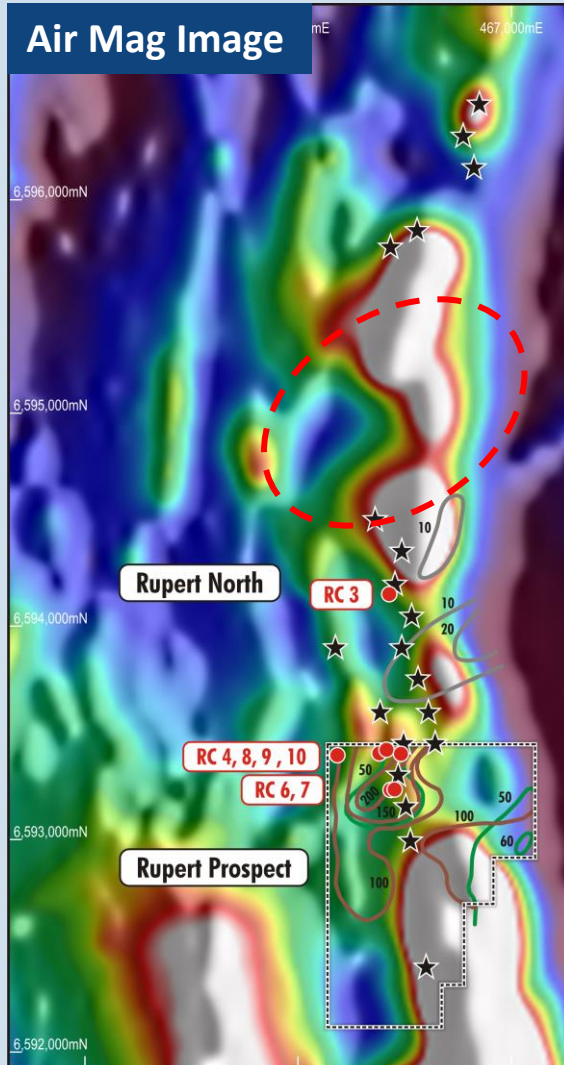
EXPLORATION LEADS TO DATE:

- **Nickel sulphides** discovered in ultramafic (Cullen's RC6) - Rupert Prospect
- Historical **Hole 3466 - 7600ppm Ni with 2800 ppm Cr** (WAMEX A18337) – supporting the general presence of ultramafics
- High Cu (1250ppm) and Pt (50ppb) from historical air core drilling at **Jackaby Prospect**, margin of ultramafic body
- Cullen's RC tested ground EM conductors – so far **pyritic metasediments**
- Historical coincident Cu, Au and Ag BLEAG anomalies, and stratigraphic interpretation define **VHMS base metal targets**



- Historical Au-Cu-Ag BLEG anomalies to the east of existing drilling (Targets 1-2), felsic metasediments interpreted bedrock, base metal VHMS mineralisation (WAMEX A26695,A17145);
- Magnetic anomaly (Target 3), possible ultramafic package on strike from RC6, for Ni-Cu-PGE mineralisation;
- VTEM anomaly trend on magnetic unit (Target 4), possible mafic-ultramafic intrusive, for Ni-Cu-PGE mineralisation;
- Cullen gold-in-soil anomaly (Target 5), for shear zone-hosted, lithological contact gold;
- Interpreted metasedimentary-felsic volcanics trend (Target 6), for base metal, VHMS mineralisation,



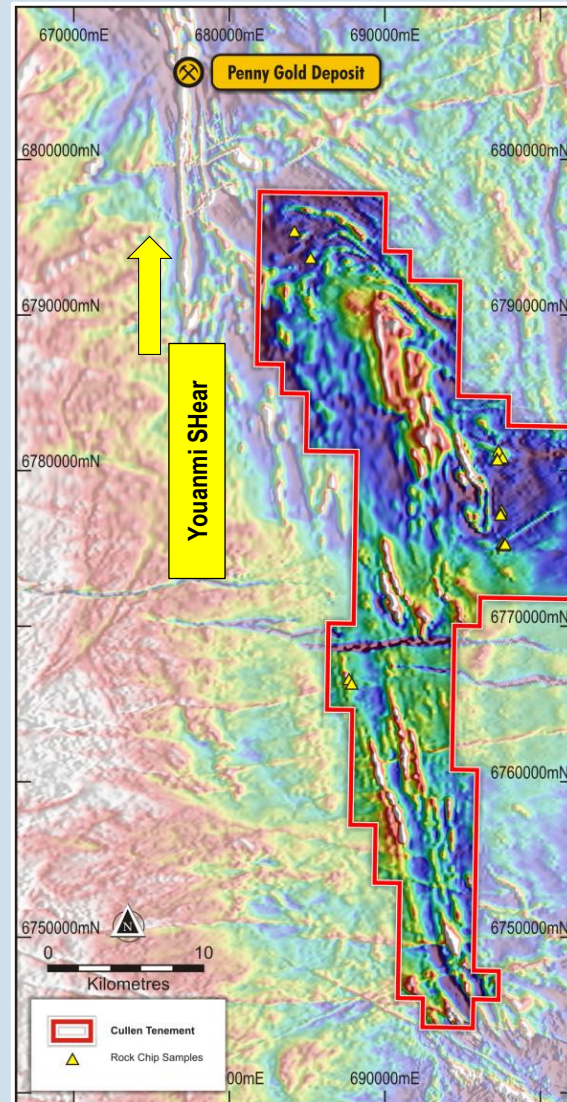


- Cullen's RC drilling has tested **ground EM conductors and Cu-Ni soil anomalies** intersecting pyritic pelites to date (Rupert)
- Untested historical BLEG anomalies (WAMEX A 16145,26695) overlie interpreted felsic volcanoclastics, Rupert North – VHMS base metals target
- Cullen's Rupert North air core drill anomalies to date:
**415pm As; 950ppm Zn; 468 Pb;
 350 ppm Cu; 0.1 ppm Au and 1.04 ppm Ag (5m composites)**

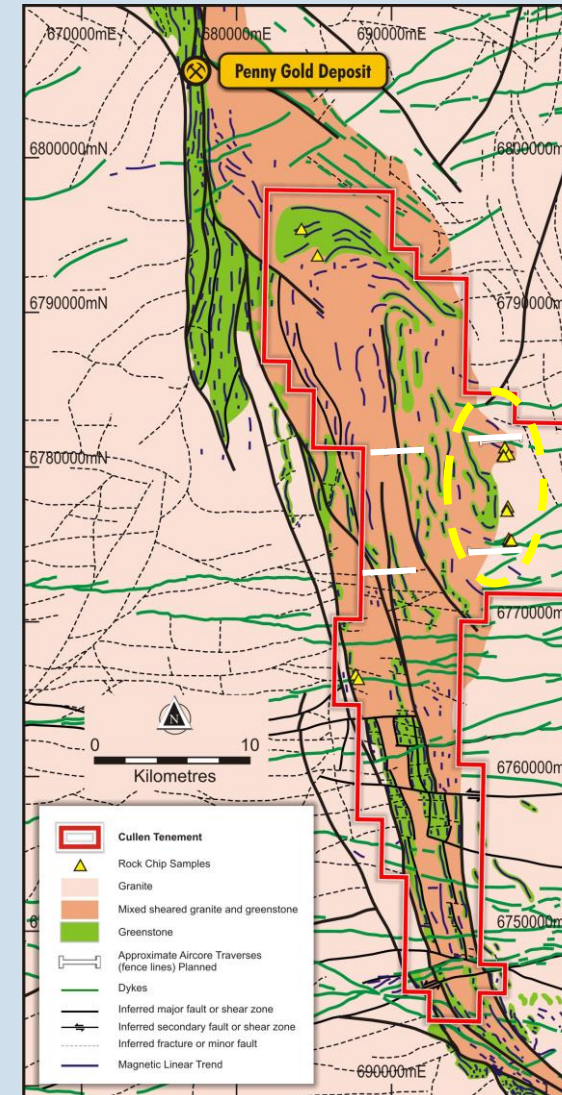
BARLEE PROJECT – YOUANMI, W.A.

Under- explored granite-greenstone terrane for Au and Li

Large Project
~50km of strike south
east of the Penny
Gold deposit.



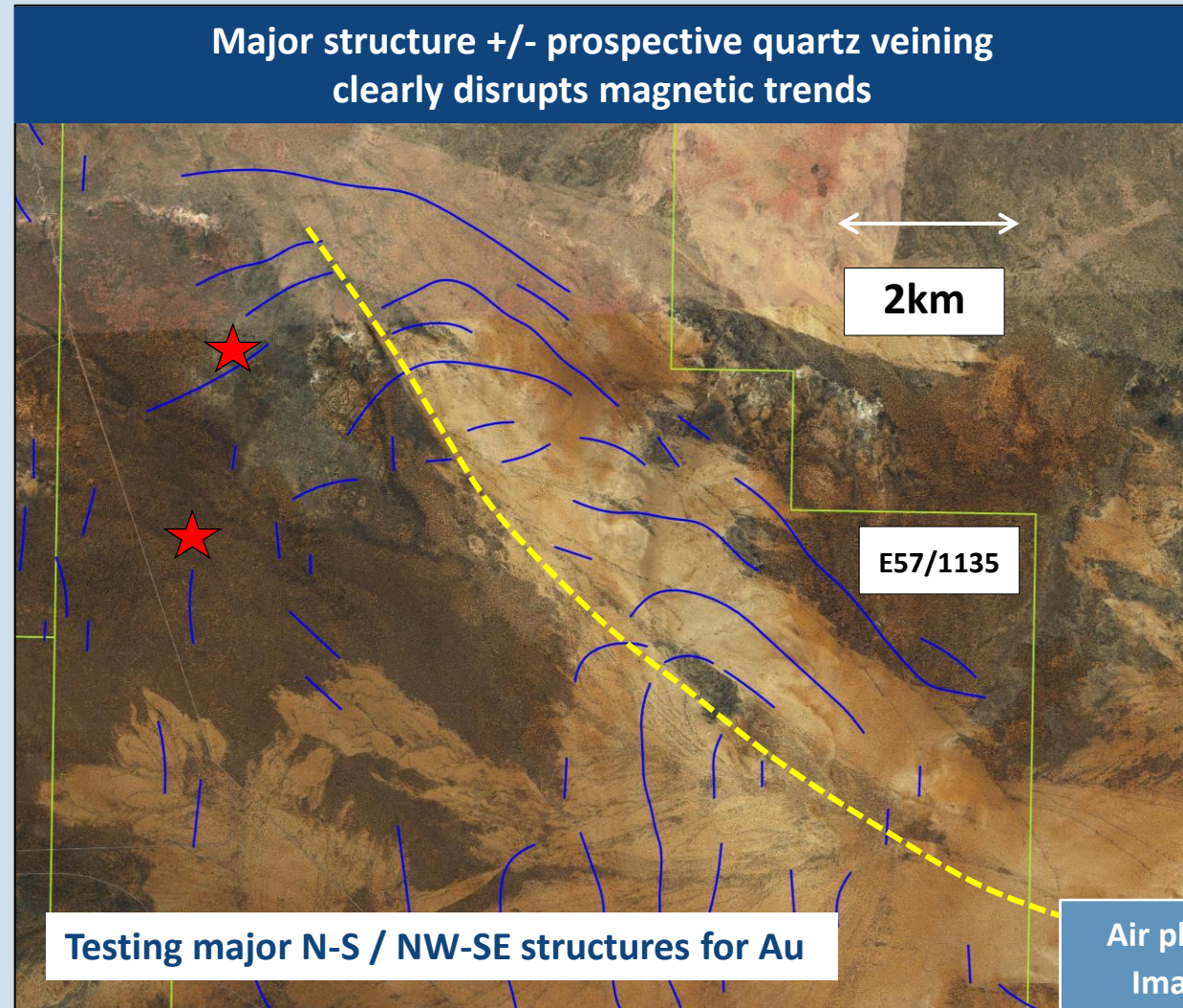
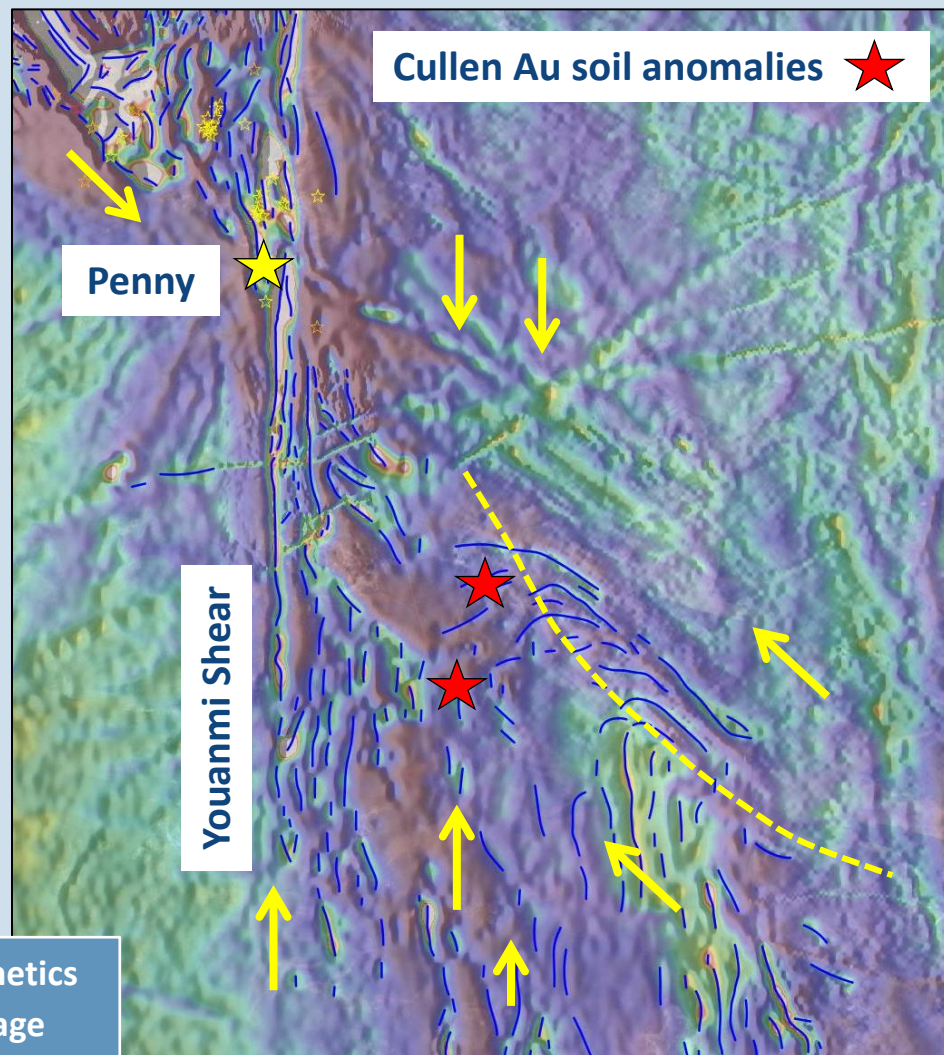
Magnetics
Image

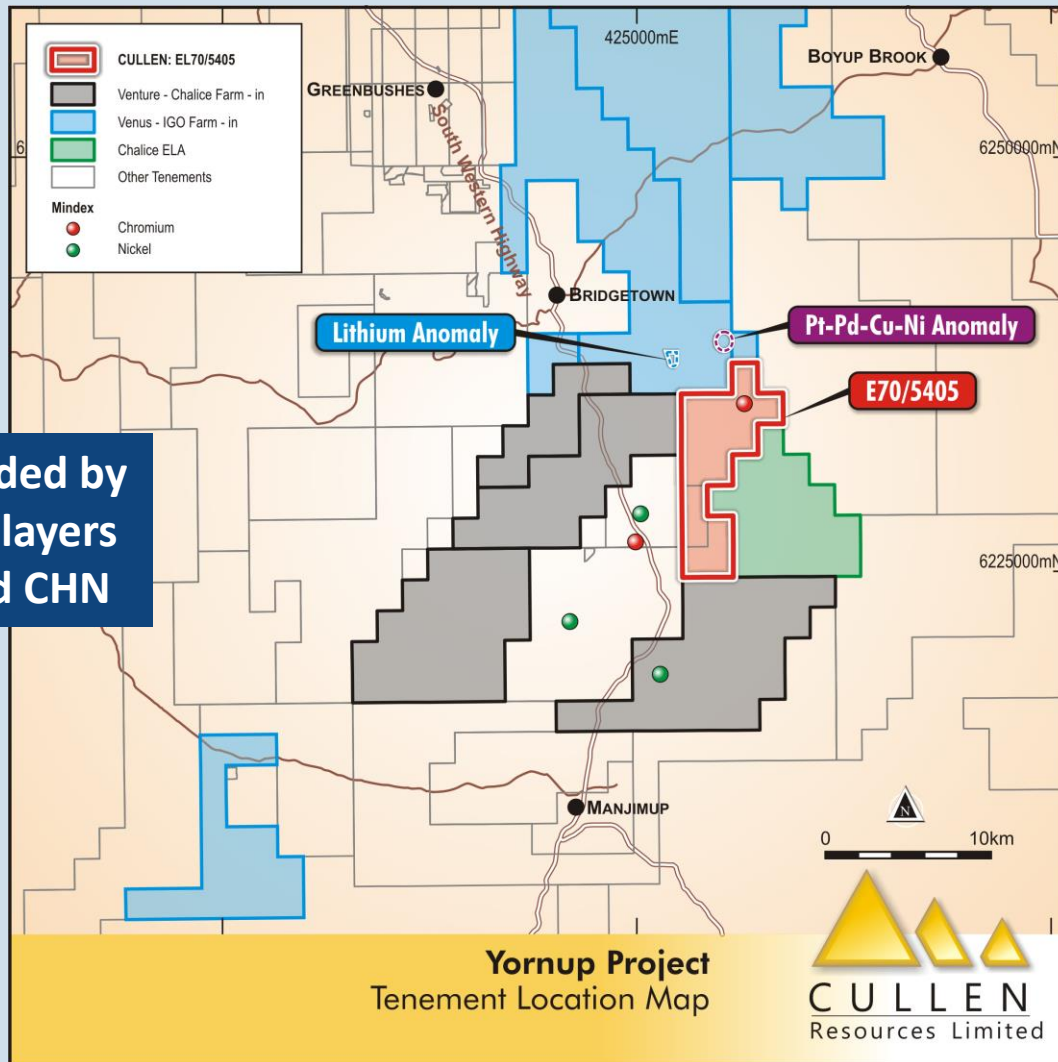


Bedrock
Interpretation

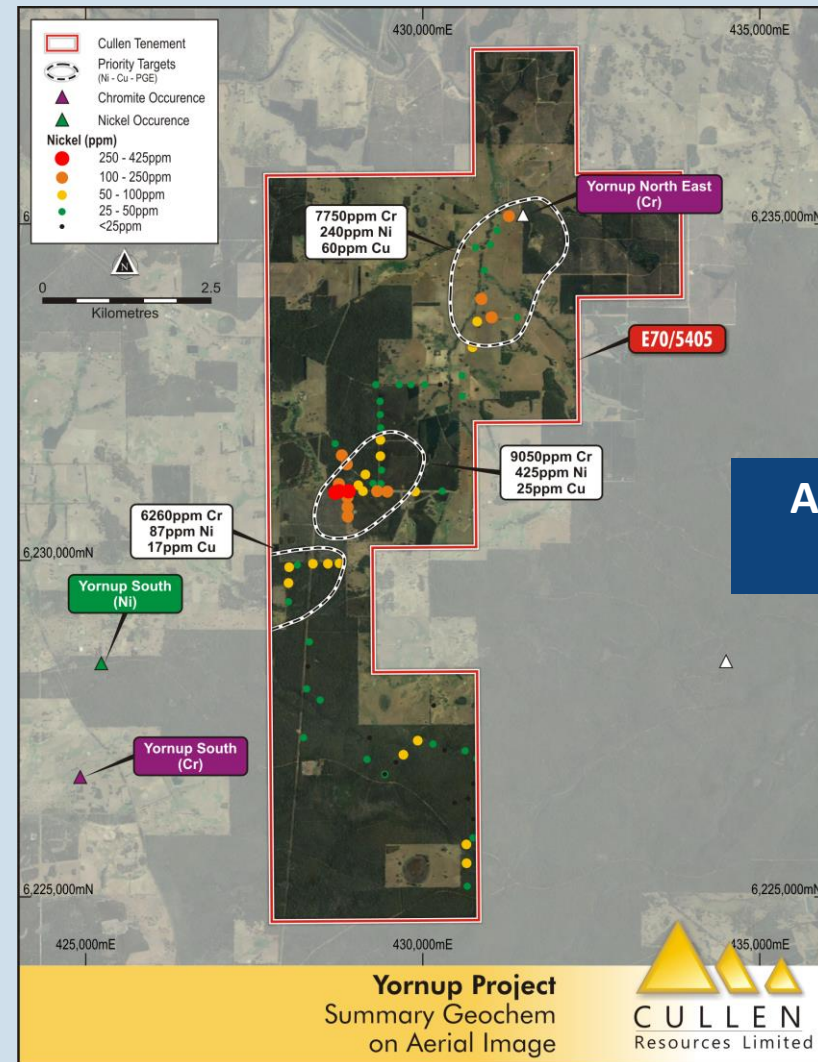
Additional air core
traverses planned for
gold and lithium

Pegmatites :
Max rock chip
values (ppm):
Li 357
Ta 105
Rb 900
Sn 50
Nb 50
Cs 12

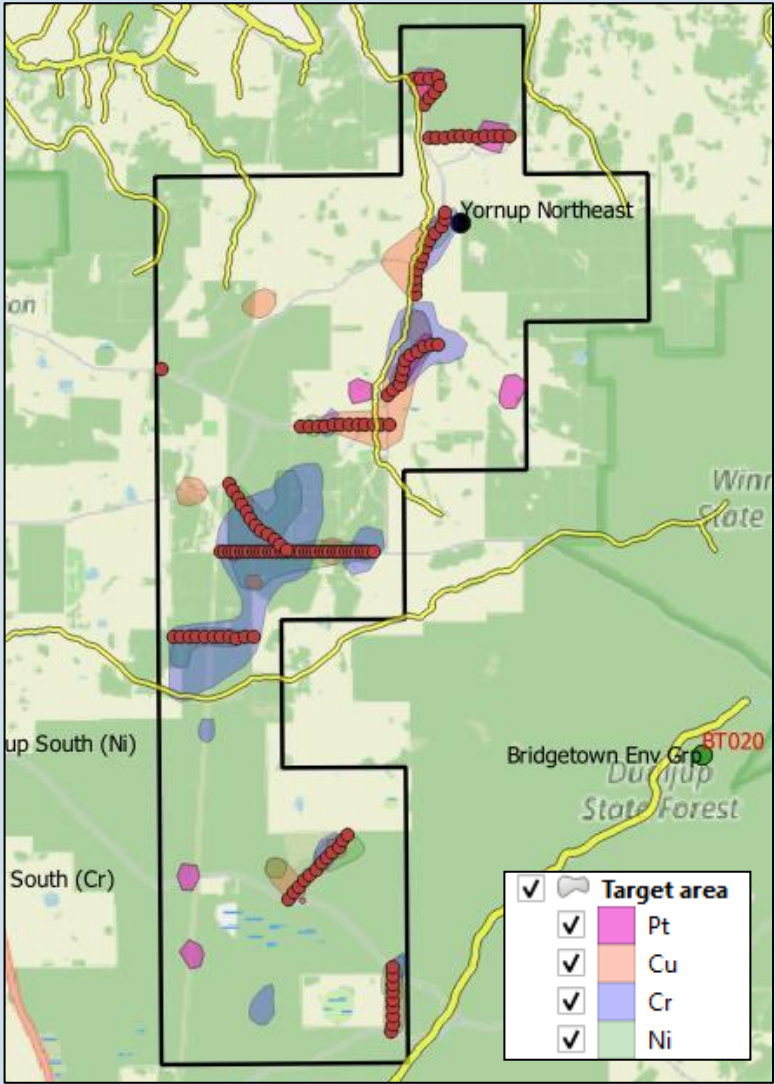
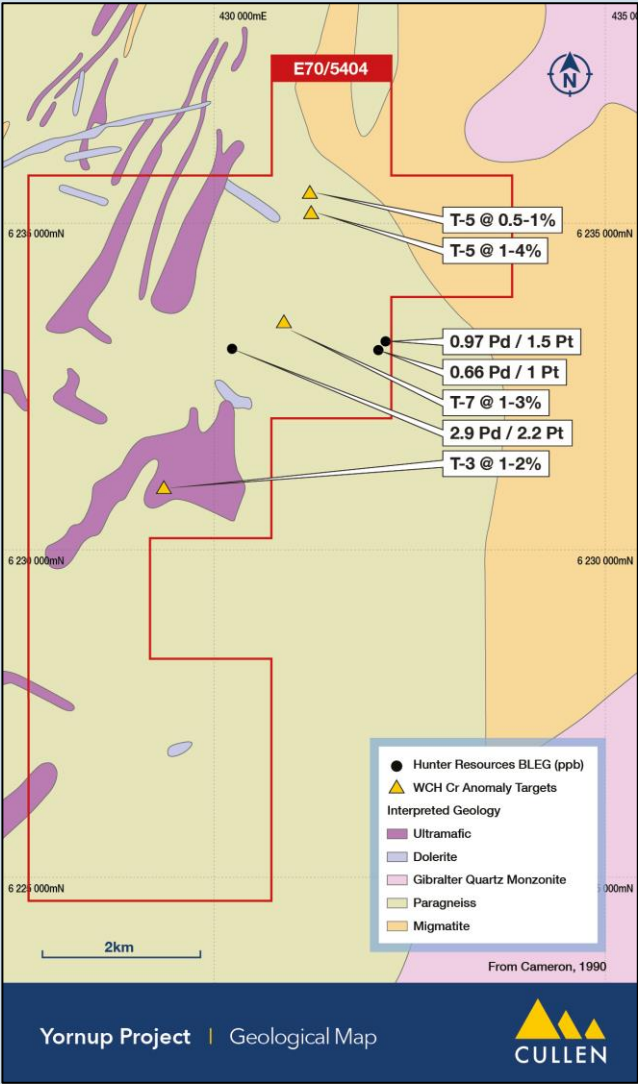




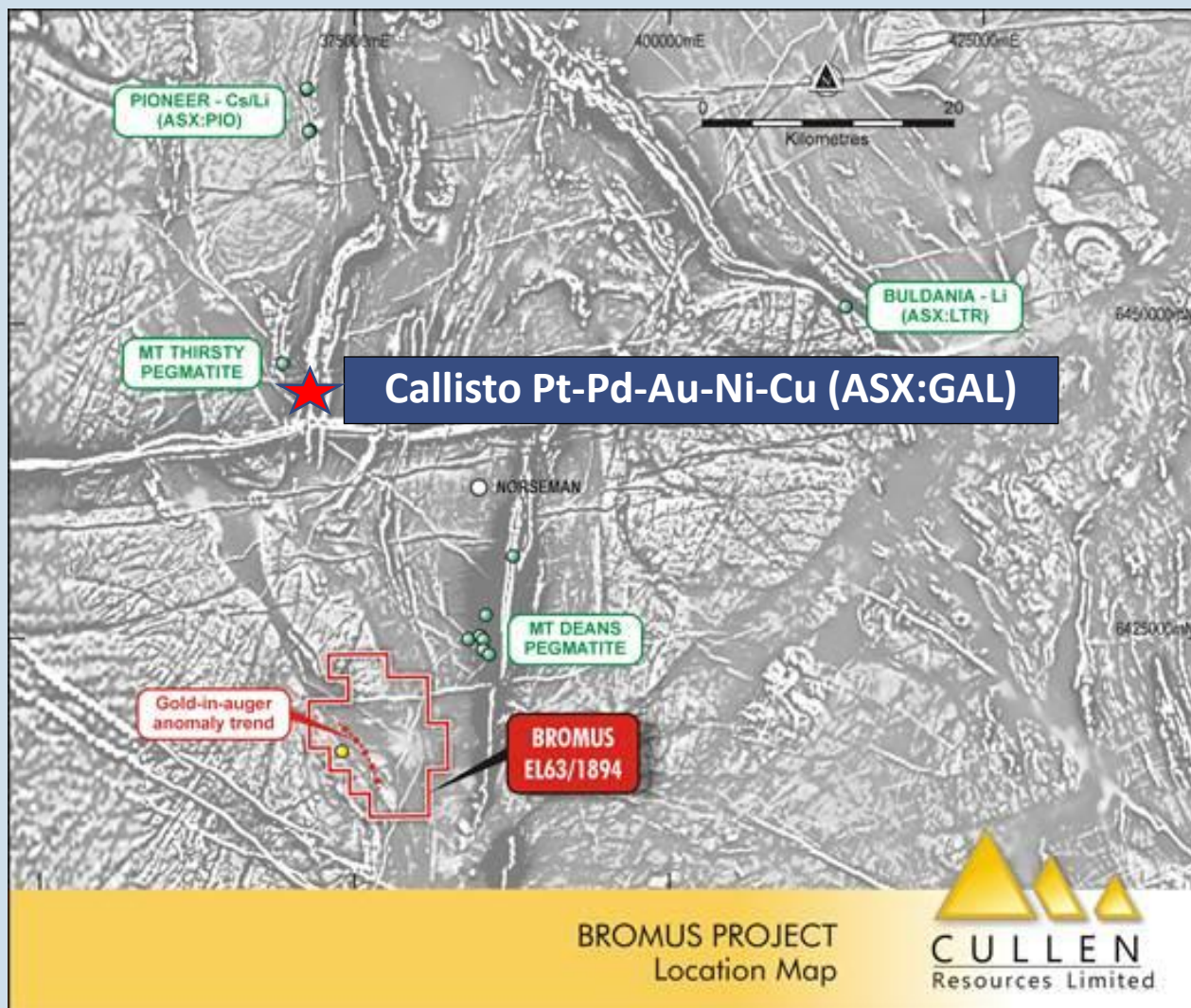
Surrounded by Major Players IGO and CHN



Anomalous Cr, Ni, Cu



● Proposed Soil Sampling Traverses (November start)

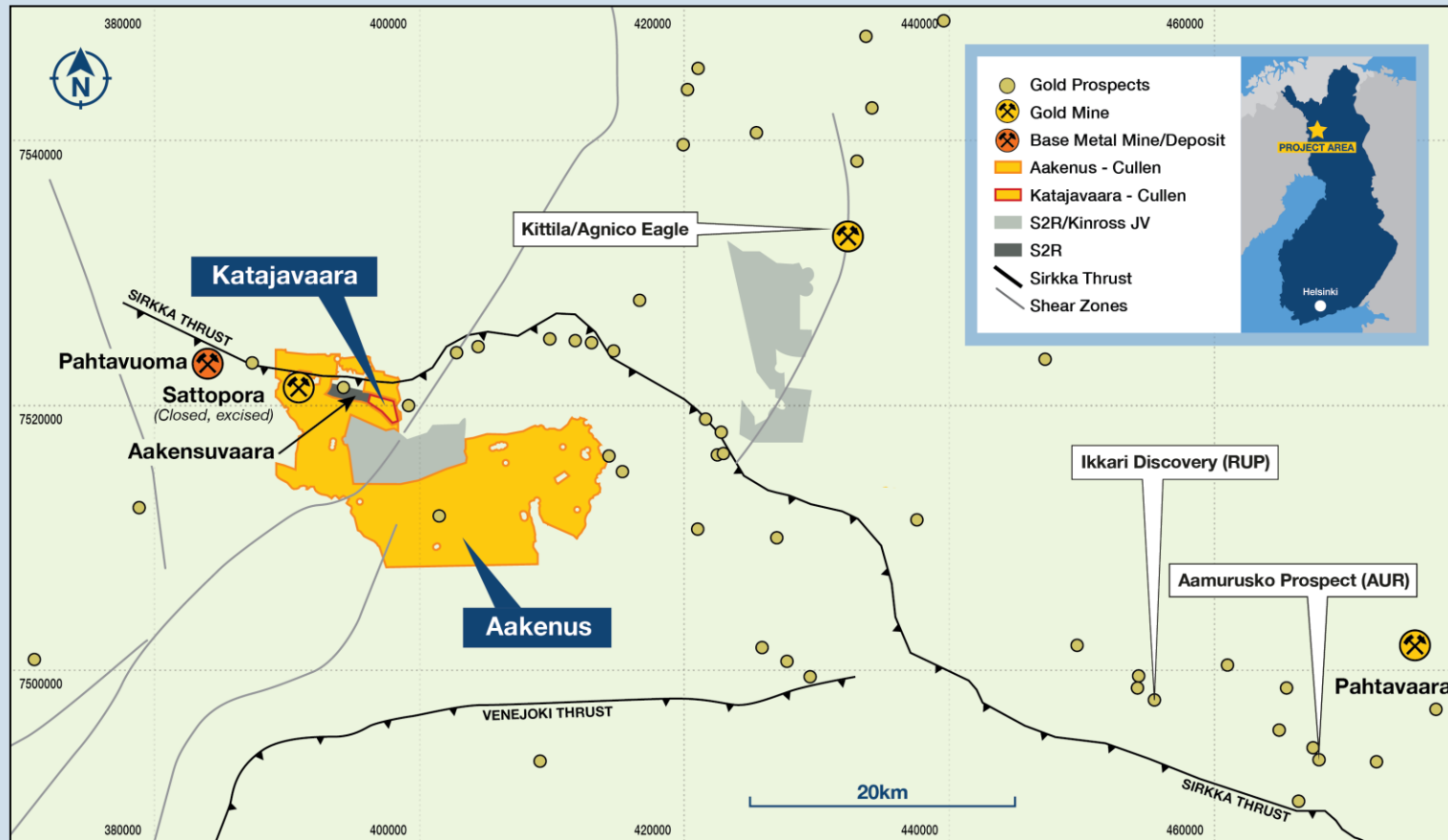


TARGETING: GOLD, LITHIUM IN PEGMATITES & Ni-Cu-PGE IN ULTRAMAFICS

- Cullen's Bromus Project lies on-strike to the south of known nickel prospects, has an untested historical gold-in-auger anomaly and is considered by Cullen to be prospective for lithium in pegmatites around domal granites and along granite-greenstone contacts.
- The tenement has had only very sparse drilling through the extensive cover sequence to bedrock.

FINNISH Cu-Au JV PROJECT

Cullen 30%, Capella 70% – Central Lapland Greenstone Belt



TARGETS INCLUDE:

- Potential extensions to Outokumpu's Saattopora former gold-copper mine, and to S2 Resources (ASX:S2R) Aakenusvaara gold project
- Killero: copper-gold anomaly, from historical Base of Till ("BoT") drilling by Anglo American
- Riikonkoski-Lonnakko-Kangas: cluster of copper occurrences on the eastern boundary of the Aakenus Project
- **JV manager Capella Minerals Limited (TSXV:CMIL; FRA:N7D2)**



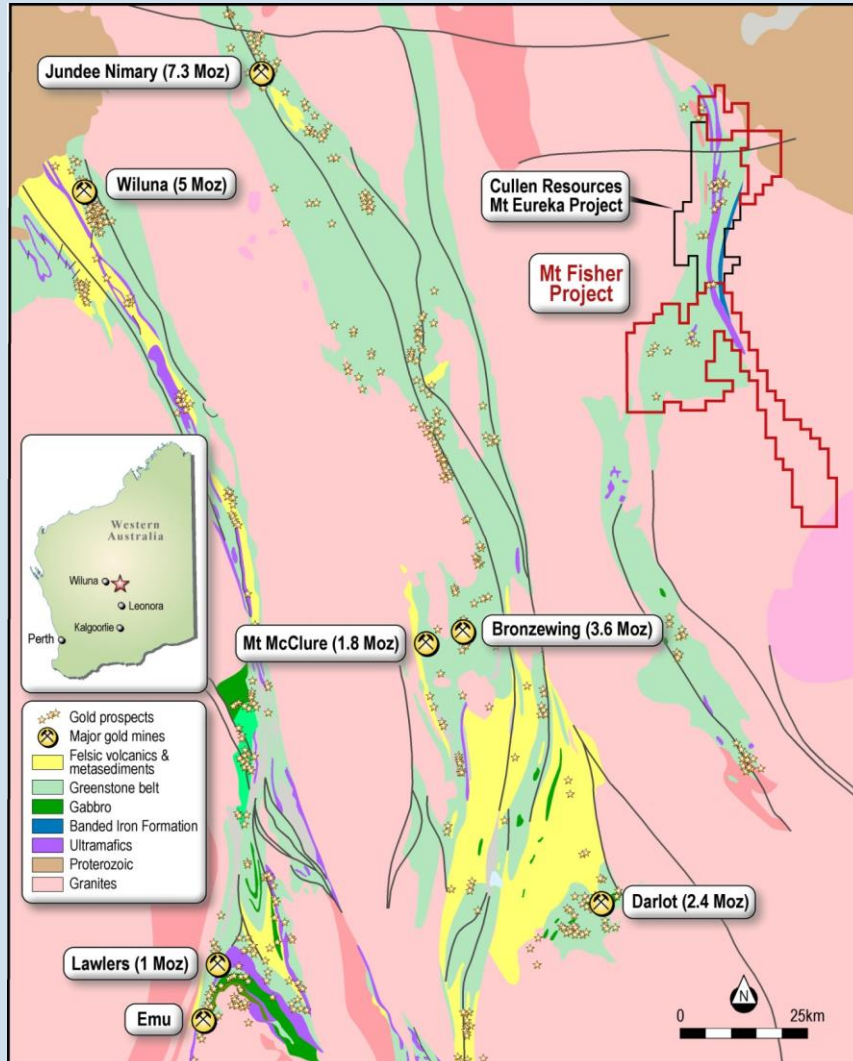
New Exploration Area for Lithium

- Cullen Finland Oy (owned 70:30 by Capella and Cullen) has applied for **Perho Reservation** (~50 sq km)
- Old quartz - feldspar -(lithium) mines (Viitaniemi, Juuraako) are excised from Perho but it includes the lithium occurrence at Seppälä
- >70 pegmatite dykes, enriched in B, Be, Li, Nb, Sn and Ta, are reported from the area (Eilu 2012, Lahti 1981, Aviola 2004).
- Little modern systematic exploration for lithium deposits has been undertaken in the area.
- **JV manager Capella Minerals Limited (TSXV:CMIL; FRA:N7D2)**

Aviola, R. 2004, Oriveden Seppälä-Vittaniemi alueen pegmatititutkimus. Geological Survey of Finland, Report M19/2141/2004/1/85. 9p. 60 app. (In Finnish).

Eilu, P.(ed.) 2012. Geological Survey of Finland, Special Paper 53,224.

Lahti, S.I. 1981, On the granitic pegmatites of the Eräjärvi area in Orivesi, southern Finland. Geological Survey of Finland, Bulletin 314, 82p.



Mt Eureka Project - northern extension of Rox's Mt Fisher Belt

- Rox Resources earning up to 75%,
- Cullen 25% (free carry to PFS)

HIGH-GRADE RESULTS TO DATE (Rox) INCLUDE:

- MFRC075:
13m @ 6.81g/t Au from 45m, including
9m @ 8.89g/t Au from 47m and
4m @ 2.59g/t Au from 67m at the **Galway Prospect**
- MFRC071:
3m @ 3.96g/t Au from 35m, including
2m @ 5.52g/t Au from 35m at the **Southern Prospect**

PROPOSED EXPLORATION PROGRAMS

Strong Targets for Discovery

Programs Ahead for 2022/2023		2022				2023	
		September	October	November	December	January	February
NORTH TUCKABIANNA, CUE							
Ground prep. + Air Core/RC Drilling				Au-Cu			
BARLEE, SE OF YOUANMI							
Prospecting soil anomalies; mapping and rock chip sampling		Lithium Pegmatites sampled (ASX:CUL;24-8-22)		Follow-up Soil/Rock Sampling For Li and Au			? Air Core Drilling For Li and Au
BROMUS, NORSEMAN							
Soil and rock chip sampling			For Lithium Pegmatites, Gold & Nickel				
WONGAN HILLS, WHEATBELT							
Air Core +/- RC Drilling					Ni-Cu-PGE / Cu-Au / VHMS		

RC – Reverse Circulation