



**ARDIDEN**

18 October 2022

# SEPTEMBER 2022 QUARTERLY ACTIVITIES REPORT

## HIGHLIGHTS

- ✓ Quarter saw completion of **5,939m of diamond drilling across 43 holes**, testing 4 prospects across a 20km strike length of the Western Hub.
- ✓ Results reported for 28 holes during the quarter confirming three distinct sets of gold mineralisation events and continuity of geological modelling with assay results including:
  - A **thick mineralised intersection in hole DB22-01 of 8.5 m @ 4.05 g/t Au from 92.5 m**, within a broader mineralised envelope of **26.51 m @ 2.1 g/t Au from 77.8 m** at the **Dobie Deposit**, is in keeping with historical reporting.
  - **Dorothy Deposit** intersection in hole DR22-02 of **2.48 m @ 3.40 g/t Au from 50.52 m** within a broader mineralised envelope of **38.48 m @ 0.97 g/t Au from 50.52m<sup>1</sup>** was slightly below historical reporting.
  - **Tonsil Deposit** intersected high grade mineralisation consistent with the Golden Patricia formation:
    - **DD22-02 0.86 m @ 62.8 g/t Au from 115.0 m**
    - **DD22-06 1.0 m @ 3.37 g/t Au from 86.0 m**
    - **DD22-14A 0.5m @ 8.68 g/t Au from 64.62 m**
    - **DD22-13 0.5m @ 3.21 g/t Au from 60.0 m**
  - **Esker Prospect** intersected high grade mineralisation concurrent with the Golden Patricia style mineralisation:
    - **WP-22-02A 0.5m @ 15.2 g/t Au from 59.5m**
    - **WP-22-01B 0.5m @ 4.26 g/t Au from 89.0m**
- ✓ Program will secure 100% ownership of New Patricia (Esker Prospect) targeted for completion prior to calendar year-end.
- ✓ Eight new Exploration Permits awarded throughout the district-scale Pickle Lake Gold Project offering multiple highly prospective gold targets along a 100km strike length in the Western Hub.
- ✓ Permitting success is testament to Ardiden's enactment of responsible ESG principles and underpins our excellent reputation and good standing in the region as responsible operators with both Stakeholders and Permitting agencies.
- ✓ At 1,088 km<sup>2</sup>, (108,800 hectares), Ardiden is the second largest gold landowner in the Uchi Region of NW Ontario, just behind Evolution Mining's gold projects at the Red Lake and Pickle Lake districts.

<sup>1</sup> Partial results reported ASX Announcement 17 August 2022.



**ARDIDEN**

Ardiden Limited ('Ardiden' or 'the Company') (ASX: ADV) is pleased to report on September 2022 Quarterly Activities at its highly prospective Gold and Lithium Projects in northwest Ontario, Canada (Figure 1 and Figure 6).

The focus during the quarter was on compilation and interpretation of the assay results from 32 holes of the 43-hole drilling programme at its Pickle Lake Gold Project, where nearly 6,000 m of diamond drilling has been completed so far at the Western Hub (Figure 3). (Refer announcements 17 August and 26 September 2022). A final drill results update is planned in the coming weeks as assays are received from the laboratory.

Ardiden's lithium joint venture partner, Green Technology Metals (ASX:GT1), remains well funded with two drill rigs operational across the Seymour Deposit and Root Lake Prospect. GT1 continues to advance baseline studies at Seymour whilst expanding exploration drilling in NW-Ontario.

### **GOLD EXPLORATION ACTIVITIES – Western Hub – Pickle Lake Gold Project**

The Pickle Lake Gold Project is a continuous District-Scale 1,088km<sup>2</sup> (108,800 hectare) gold landholding, located east of Red Lake in the well-endowed Uchi Geological sub-province of north-western Ontario, Canada (Figure 1). The Uchi Province is host to numerous currently producing gold mines at Red Lake and at Musselwhite, and is a highly active exploration area with Evolution, Newmont, Kinross, and numerous other exploration companies all currently active with gold exploration work in the area.

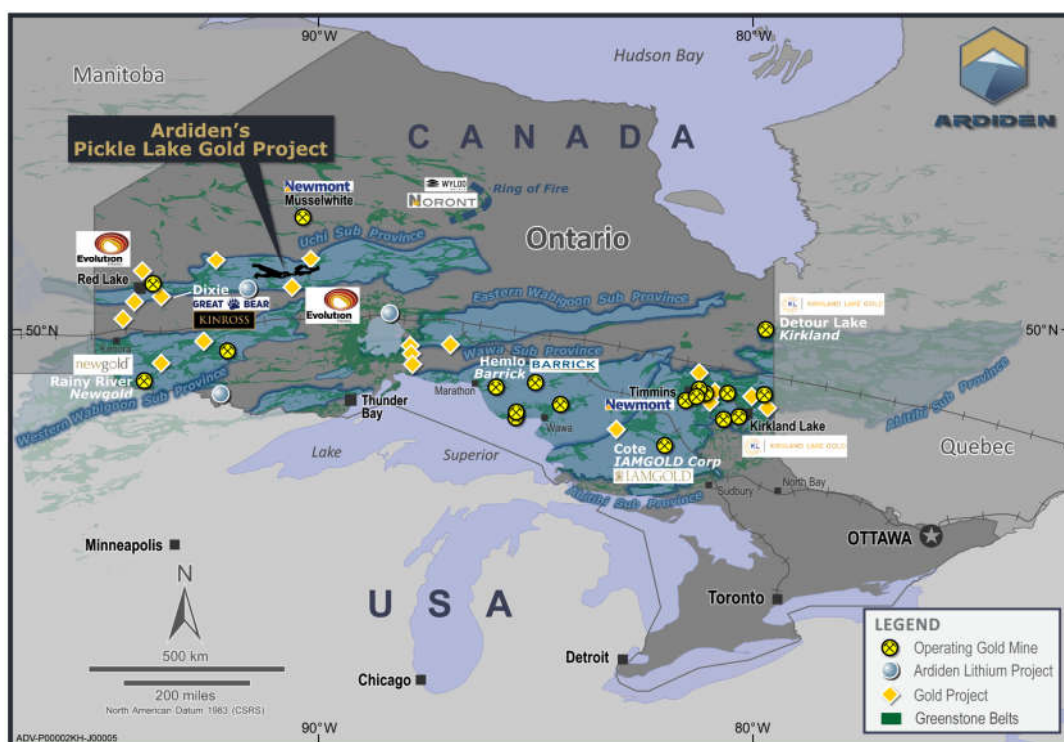


Figure 1- Location of Ardiden's Pickle Lake Gold project within the Uchi Belt of northwest Ontario.

Ardiden's drilling programme at the **Western Hub** has been systematically testing four gold prospects along a 20km strike length. A total of **43 holes for 5,939m** of fully oriented diamond core was completed to a maximum depth of 252 m, comprising:

1. **Esker Prospect - 18 holes for 2,206m**
2. **Tonsil Prospect – 19 holes for 2,680m**
3. **Dorothy Prospect – 3 holes for 655m**
4. **Dobie Prospect – 3 holes for 398m**



**ARDIDEN**

Ardiden's drilling in the Western Hub is targeting the Golden Patricia geological sequence both to the north-west and to the south-east of the historical underground mine. The mine was developed to 750 m vertical depth over a 3 km strike length and extracted **619,796 oz Au @ 15.2 g/t Au<sup>2</sup>** and ceased operations in 1997 due to poor gold prices.

Location of the Western Hub gold prospects and drillholes with reported results are shown below in Figure 2.

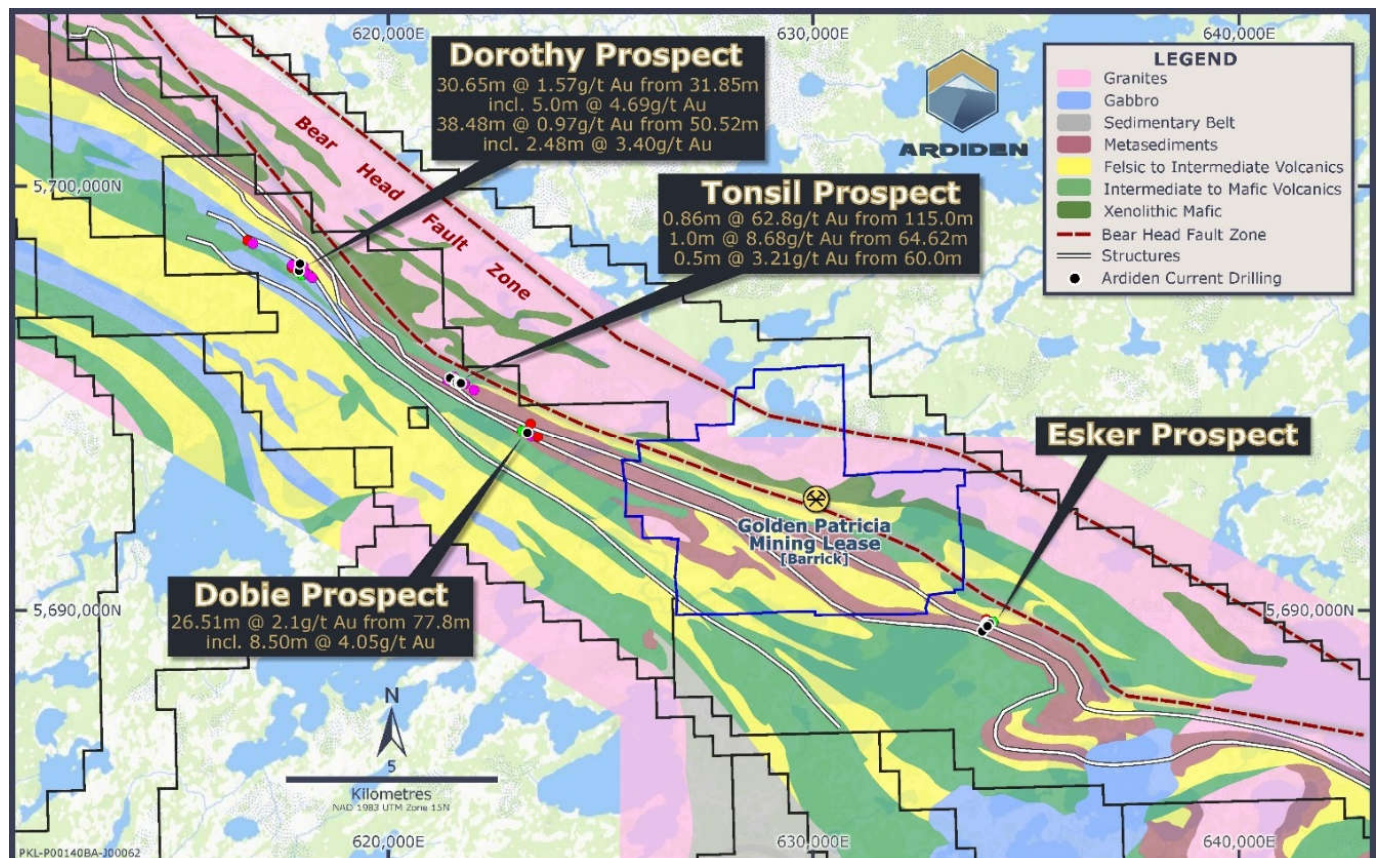


Figure 2- Map showing recent drilling intersections across the Western Hub of Ardiden's Pickle Lake Gold Project. Details of results presented are found within this release.

Drilling results for 28 holes were reported this quarter and there remains another 11 completed diamond drillholes in process through the laboratory that are yet to be reported.

The Company targets to report results for the final 11 holes in the current quarter as they are received from the laboratory with the final fire assay results.

Conceptual drill targeting across multiple prospects was based on historical results combined with the Company's geological modelling. Recent and previously released results below provide an overview of these structures:

<sup>2</sup> Information in relation to historical gold production at the Golden Patricia Mine has been referenced from three sources of publication, namely: 1. Harron, G.A. 2009. Technical Report on Three Gold Exploration Properties Pickle Lake Area, Ontario, Canada. G.A. Harron, P.Eng., G.A. Harron & Associates Inc. 2. Smyk, M., Hollings, P. and Pettigrew, N., 2015. Geology and Mineral Deposits of The Pickle Lake Greenstone Belt. Institute on Lake Superior Geology, May 20-24, 2015, Field Trip Guidebook and 3. Puumala, M. A. 2009. Mineral Occurrences of the Central and Eastern Uchi Domain. ON Geol. Surv., Open File Report 6228.



### Primary Structure (Golden Patricia Style Mineralisation)

- WP22-03 **0.4m @ 148.0 g/t Au** from 70.29m (Esler : ASX 14/6/22)
- WP22-02A **0.5m @ 15.2g/t Au** from 59.50m (Esler : ASX 17/8/22)
- WP22-03 **0.5m @ 5.35 g/t Au** from 83.50m (Esler : ASX 14/6/22)
- DD22-02 **0.86m @ 62.8 g/t Au** from 115.00m (Tonsil : ASX 26/9/22)
- DD22-04 **0.3m @ 33.6g/t Au** from 117.50m (Tonsil : ASX 14/6/22)
- DD22-03 **0.7m @ 9.45g/t Au** from 107.50m (Tonsil : ASX 14/6/22)
- DD22-14A **0.5m @ 8.68 g/t Au** from 64.62m (Tonsil : ASX 26/9/22)
- DD22-04 **1.0m @ 4.79g/t Au** from 168.00m (Tonsil : ASX 14/6/22)
- DD22-13 **0.5m @ 3.21 g/t Au** from 60.00m (Tonsil : ASX 26/9/22)

### Secondary Structure (Broad Mineralisation Styles)

- DR22-01 **30.65m @ 1.57 g/t Au from 31.85m** (Dorothy: ASX 17/8/22)
  - Including **5.0m @ 4.69 g/t Au** from 57.00m
- DR22-02 **38.48m @ 0.97 g/t Au** from 50.52m (Dorothy: ASX 17/8/22 and ASX 26/9/22)
  - Including **2.48m @ 3.40g/t Au** from 50.52m
- DB22-01 **26.51m @ 2.1g/t Au** from 77.80m (Dobie: ASX 26/9/22)
  - Including **8.50m @ 4.05 g/t Au** from 92.50m

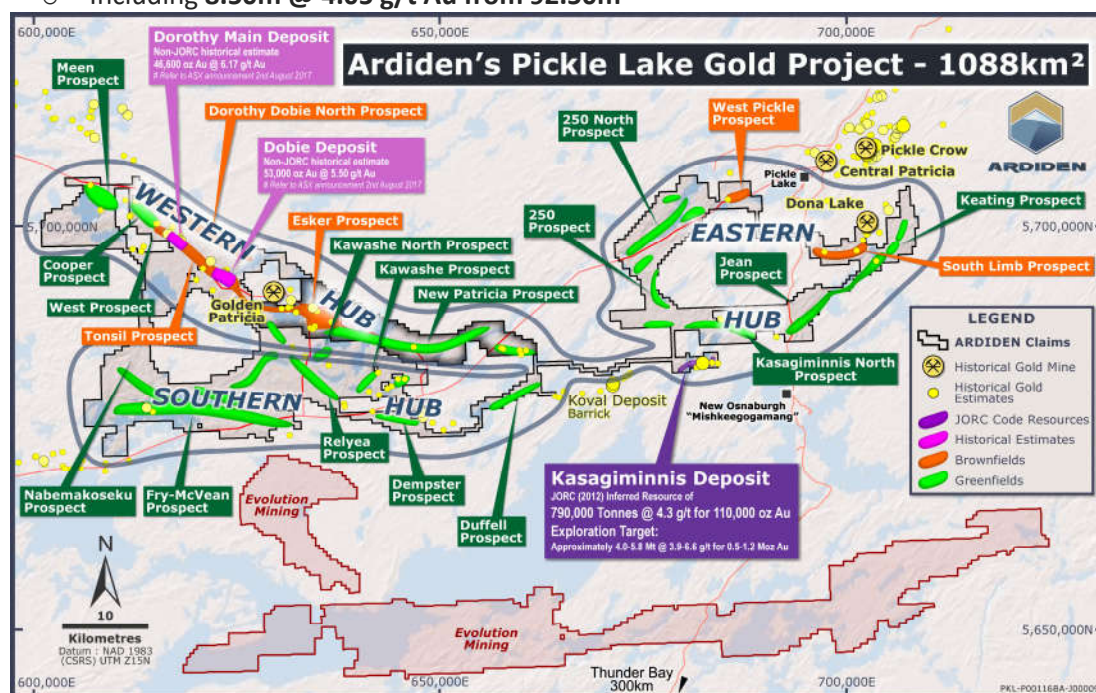


Figure 3-Location of the Western Hub and multiple Gold Prospects at the Pickle Lake Gold Project

The potential quantity and grades stated for the Exploration Target is conceptual in nature and there has been insufficient exploration to define Mineral Resources across the exploration target area. It is uncertain if further exploration of these targets will produce results that permit additional Mineral Resources to be estimated.

## Permitting

The new exploration work permits from the Ministry of Mines, summarised below in Table 1 and Figure 4, means Ardiden has a fully permitted strike length of 20km along the Western Hub, including its highly prospective brownfields gold mineralisation opportunities, in addition to the fully permitted Kasagiminnis and South Limb Prospects, spanning across its +100km-wide gold project.

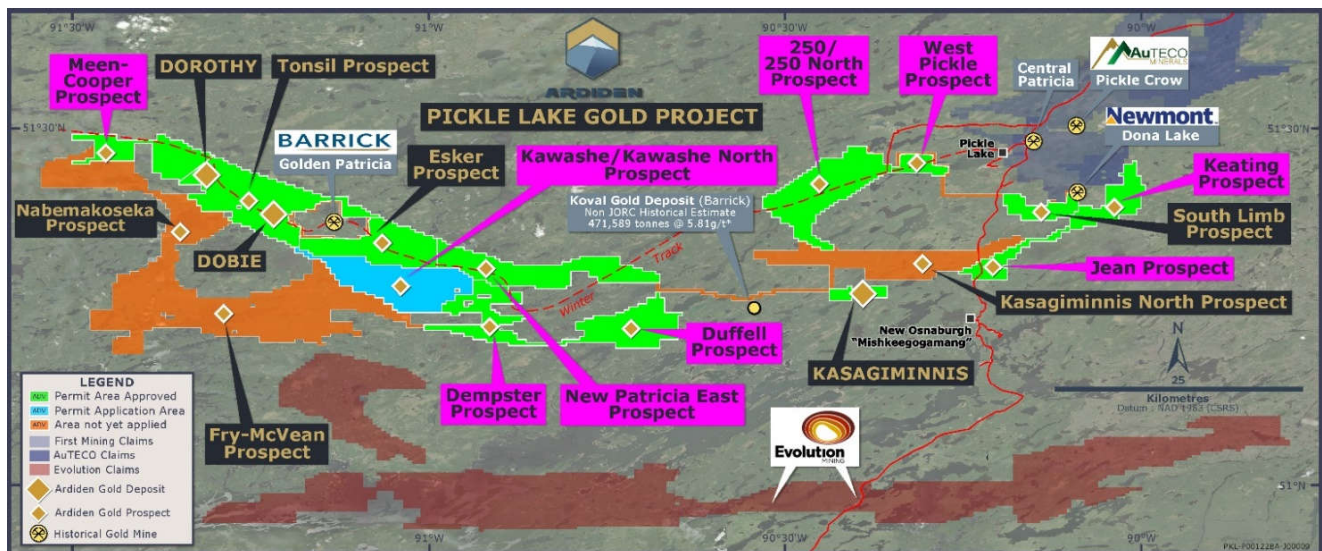


Figure 4 - Status of Permitting at the District-Scale Pickle Lake Gold project- Purple callout text boxes denote the recently received Exploration Permit areas. Green permit areas- fully approved, blue-in process, orange-not yet in application.

Commenting on the receipt of these early-stage exploration permits for the Company's Pickle Lake Gold Project, Ardiden Exploration Manager Haydn Daxter said:

*"The team was extremely pleased that the additional work permits were awarded to the Company without delay, which was built largely on Ardiden's regular consultation with First Nation groups and other stakeholders across the area, and our willingness to accommodate cultural and seasonal traditions in designing our work activities across this expansive gold project. Ardiden now has a large choice of areas to work. We regularly pursue opportunities to engage with local services and labour as part of our ESG initiatives in Ontario, Canada."*

Table 1- Permits submitted to MNDM and granted this year to date.

Permit Number	Gold Prospect	Hub	Targeting	FN Communities
PR-22-000166	Dempster	Southern	Greenfields- Gold	Cat Lake – Mish – Slate Falls
PR-22-000167	Duffell	Southern	Greenfields- Gold	Cat Lake – Mish – Slate Falls
PR-22-000168	Jean	Eastern	Greenfields- Gold	Mishkeegogamang
PR-22-000181	Keating	Eastern	Greenfields- Gold	Mishkeegogamang
PR-22-000182	West Pickle	Eastern	Brownfields- Gold	Mishkeegogamang
PR-22-000164	250/250 North	Eastern	Brownfields – Gold +Cu/Ni/Pt/Pd	Cat Lake – Mish – Slate Falls
PR-22-000075	Meen-Cooper	Western	Greenfields- Gold	Cat Lake – Slate Falls
PR-22-000092	New Patricia East	Western	Greenfields- Gold	Cat Lake – Mish – Slate Falls
PR-22-000255	Kawashe/Kawashe North	Western	Greenfields- Gold	Cat Lake – Mish – Slate Falls

\*Historical production and Non-JORC historical estimates by original owners of the properties at Pickle Lake, including Central Patricia, were summarised in 2009 in an NI43-101 Technical Report on Gold Properties within the Pickle Lake area (Harron, 2009).





**ARDIDEN**

As reported in early 2020, Ardiden entered into an earn-in arrangement with **Exiro Minerals Corp** over their **New Patricia** landholding at Pickle Lake (refer announcement 6 January 2020). New Patricia includes the Esker Gold prospect, part of the Western Hub where Ardiden has recently been drilling. The New Patricia ground also hosts numerous other compelling structural gold targets over a 35km strike length (Figure 5) that are yet to be tested.

Ardiden believes it has now completed its aggregate assessment exploration work necessary to meet 100% ownership of the Exiro Claims. The 100% earn-in will be completed conclusively after the Ontario Mines Department and Exiro have received and accepted Ardiden's Assessment work reports.

**This will result in Ardiden holding 100% ownership over its entire District-scale 1,088km<sup>2</sup> (108,800 hectare) Gold Property.**

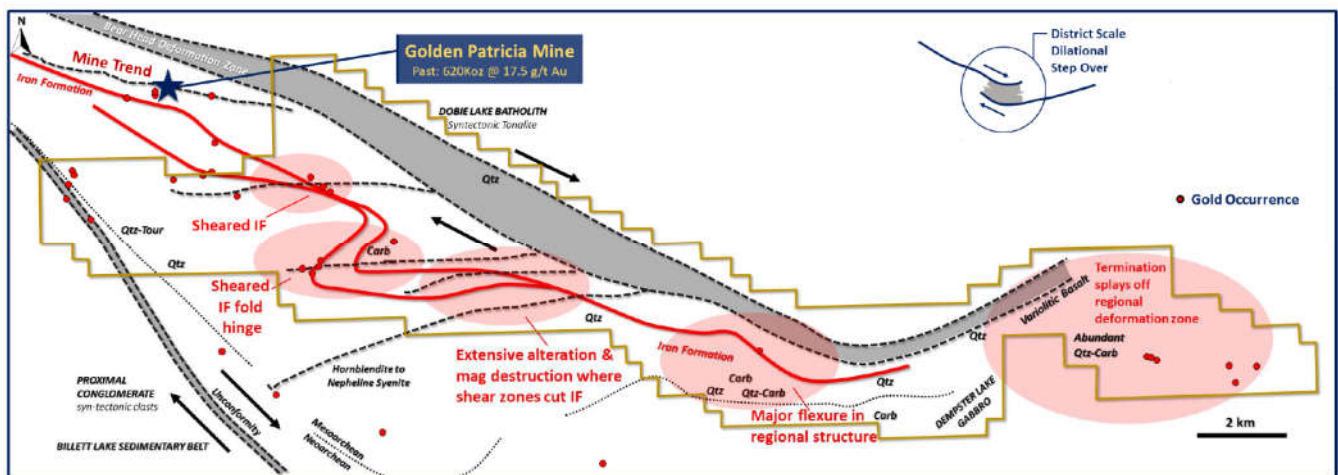


Figure 5 - - New Patricia - Structural Interpretation Plan

### FIRST NATIONS – ESG

Ardiden continued to build on its strong relationships with the Mishkeegogamang, Slate Falls and Cat Lake First Nation communities with meetings held during the period between Ardiden representatives and members of the Mishkeegogamang, Slate Falls and Cat Lake FN Chiefs and Council Members. Ardiden has established regular project updates on its early exploration activities along with further developing a training and mentoring programme with our First Nation partners as we continue to grow together.



## LITHIUM ACTIVITIES

Ardiden retains a free carried 20% interest in a Lithium Joint Venture with Green Technology Metals (ASX:GT1). Ardiden's free carry is until the earlier of completion of a positive Bankable Feasibility Study or a GT1 Decision to Mine.

In addition, under the JV, each party retains off-take / marketing rights in the same percentage as their respective JV interest.

Ardiden also owns a 5.14% equity holding of GT1, escrowed until November 2023.

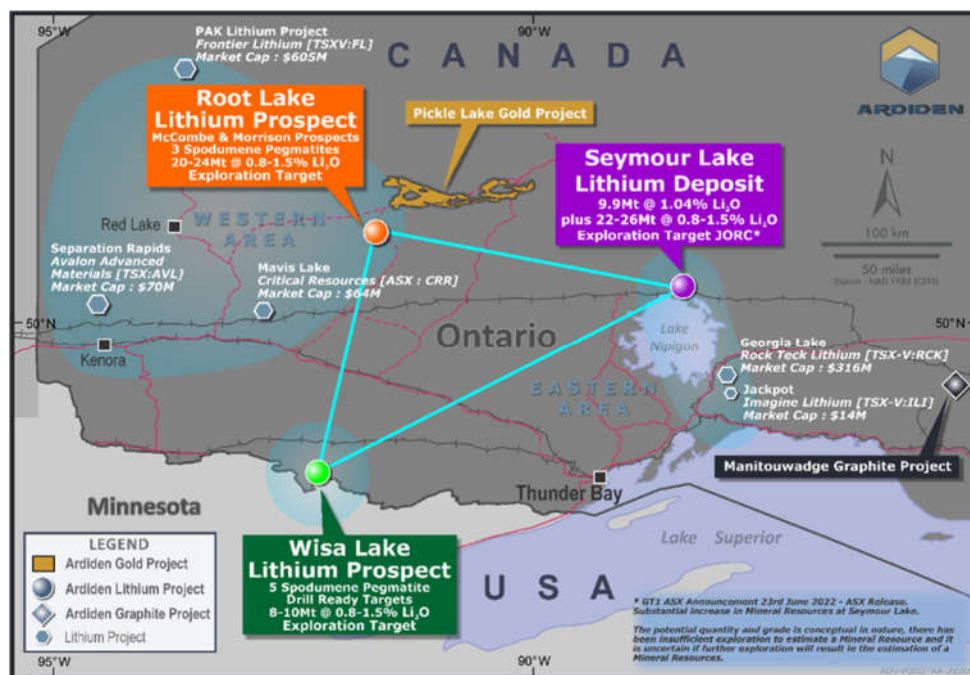


Figure 6- Location of Ardiden's Three Joint-Ventured Lithium Projects in NW Ontario

Further information on the Ontario Lithium JV can be found in recent GT1 ASX releases throughout the September quarter, a summary of which is below:

Date	Title
08/07/2022	Further Step-Out Success at Seymour
19/07/2022	Baseline Environmental Studies Continue at Seymour
29/07/2022	Quarterly Activities/Cashflow Report – June 2022
08/08/2022	Drilling to Commence at Root
12/08/2022	Quarterly Activities Report - Addendum
22/08/2022	Further Extensional Drilling Success at North Aubry
05/09/2022	Drilling Commences at Second Key Lithium Project in Ontario
08/09/2022	Corporate Presentation
20/09/2022	Strategic Collaboration Agreement with Lithium Americas Corp
29/09/2022	Annual Report to Shareholders & Governance Statement

## **CORPORATE**

During the Quarter, Mr Robin Longley resigned as Managing Director and CEO of the Company, effective 15 September 2022. The Board has commenced a comprehensive process to recruit a new CEO to lead the executive team and deliver on the Company's strategy and objectives moving forward.

In the interim, the Board has undertaken additional duties to support experienced Exploration Manager, Hayden Daxter, and CFO, Tara Robson, who have assumed responsibility for the day-to-day operations of the Company.

The Company's cash balance on 30 September 2022 was **A\$1.68 million**.

Cash outflows for the June Quarter totalled A\$2.68m. Cash outflows consist substantially of exploration activity of \$2.17m, staff costs \$343k, and corporate administration of \$165k. Payments to related parties and their associates (as set out in Section 6 of the Appendix 5B) totalled \$309k consisting of Executive and Non-executive Directors fees, salaries, termination benefits, and superannuation payments.

The Company continually monitors market conditions and manages its cash reserves prudently. The Company has paused its drilling program at the Pickle Lake Gold Project, while it awaits the assay results on the remaining 11 drill holes and has the opportunity to analyse those results to refine future drill targets and therefore expenditure over the coming months will be significantly reduced.

This information is authorised for ASX release by the Board.

## **ENDS**

For further information:

### **Investors:**

Bruce McFadzean  
Non-Executive Chairman  
Tel: +61 8 6184 5938  
[info@ardiden.com.au](mailto:info@ardiden.com.au)

### **Media:**

David Tasker  
Chapter One Advisors  
Tel +61 (0) 433 112 936  
[dtasker@chapteroneadvisors.com.au](mailto:dtasker@chapteroneadvisors.com.au)

*For more information including modelling parameters and details, the ASX announcements pertaining to Exploration Results and Mineral Resources are available from the Company's website: [www.ardiden.com.au](http://www.ardiden.com.au)*

### **Forward Looking Statement**

*This announcement may contain some references to forecasts, estimates, assumptions and other forward-looking statements. Although the company believes that its expectations, estimates and forecast outcomes are based on reasonable assumptions, it can give no assurance that they will be achieved. They may be affected by a variety of variables and changes in underlying assumptions that are subject to risk factors associated with the nature of the business, which could cause actual results to differ materially from those expressed herein. All references to dollars (\$) and cents in this presentation are to Australian currency, unless otherwise stated. Investors should make and rely upon their own enquires and assessments before deciding to acquire or deal in the Company's securities.*

### **Competent Person's Statement**

*The information in this report that relates to Exploration Results and Exploration Targets at the Pickle Lake Project is based on, and fairly represents, information and supporting documentation prepared by Mr Haydn Daxter, a Member of the Australian Institute of Geoscientists. Mr Daxter is a full-time employee at Ardiden Limited. Mr Daxter has sufficient experience which is relevant to the style of mineralisation and type of deposit and to the activity which they are undertaking*





**ARDIDEN**

to qualify as a Competent Person as defined in the 2012 Edition of the “Australasian Code for Reporting of Exploration Results, Mineral Resources and Ore Reserves”. Mr Daxter consents to the inclusion in this report of the matters based on this information in the form and context in which it appears.

**About Ardiden:**

Ardiden is focused on systematic gold exploration at its Pickle Lake Gold Project in the well-endowed Uchi Geological Subprovince of north-west Ontario, Canada. The Company’s 1,088km<sup>2</sup> (108,800 hectare) District-Scale Gold Project is the largest continuous gold land holding in the Uchi Belt, where Barrick, Newmont Kinross and Evolution all hold significant gold mine and exploration assets. Pickle Lake produced over 3M oz of gold up to 1997 and has remained vastly under-explored since. Ardiden’s strategic landholding is situated on the same geological belt as Red Lake, the ‘Uchi’ Subprovince, which has produced over 30M oz of gold to date and where new Tier-1 gold discoveries are still being made, such as Great Bear Resources’ Dixie Project, which is now under new ownership following the successful CAD\$1.6 billion acquisition by Kinross. In addition to its Pickle Lake Gold Project, Ardiden has a free carried 20% interest in a Lithium Joint Venture with Green Technology Metals (ASX:GT1). Ardiden’s free carry is until the earlier of completion of a positive Bankable Feasibility Study or a GT1 Decision to Mine. In addition, under the JV, each party retains off-take/marketing rights in the same percentage as their respective JV interest. Ardiden also owns ~13 million shares in GT1 currently valued at ~\$10.1M<sup>3</sup>.

<sup>3</sup> As at closing price (\$0.78) of GT1 on 17 October 2022.



**ARDIDEN**

## QUARTERLY TENEMENT SUMMARY

### 1. The mining tenements held at the end of the quarter and their location.

Gold Projects	Tenement Number/Claim ID	Status	Location	Beneficial Percentage Interest
Pickle Lake - Connections	536230, 536231, 536232, 536233, 536234, 536235, 536236, 536237, 536238, 536239, 536240, 536241, 536242, 536243, 536244, 536245, 536246, 536247, 536248, 536249, 541336, 541337, 541341, 541344, 541345, 541346, 541350, 541355, 541358, 541359, 541360, 541361, 541366, 541367, 541368, 541369, 541370, 541371, 541372, 541373, 541374, 541375, 541376, 541377, 541378, 541379, 541380, 541381, 541382, 541383, 541384, 541385, 541386, 541387, 541388, 541389, 541390, 541391, 541392, 541393, 541393, 541393, 541394, 541395, 541396, 541397, 541398, 541399, 541400, 541401, 566571, 566572, 566573, 566574, 566575, 566576, 566577, 566578, 566579, 566580, 566581, 566582, 566583, 566584, 566585, 566586, 566587, 566588, 566589, 566590, 566591, 566592, 566593, 566594, 566595, 566596, 566597, 566598, 566599, 566600, 566601, 566602, 566603, 566604, 566605, 566606, 566607, 566608, 566609, 566610, 566611, 566612, 566613, 566614, 566615, 566616, 566617.	Granted	Ontario, Canada	100%
Pickle Lake – Dempster Lake	579770, 579771, 579772, 579773, 579774, 579997, 579998, 580004, 580005, 580006, 580007, 580008, 580009, 580010, 580015, 580016, 580017, 580018, 580019, 580020, 580021, 580022, 580023, 580024, 580025, 580026, 580027, 580028, 580029, 580030, 580031, 580032, 580033, 580034, 580035, 580036, 580037, 580038, 580039, 580040, 580041, 580042, 580043, 580044, 580045, 580046, 580047, 580048, 580049, 580050, 580051, 580052, 580053, 580054, 580055, 580056, 580057, 580058, 580059, 580060, 580061, 580062, 580063, 580064, 580065, 580066, 580067, 580068, 580069, 580070, 580071, 580072, 580073, 580074, 580075, 580076, 580077, 580078, 580079, 580080, 580081, 580082, 580083, 580084, 580085, 580086, 580087, 580088, 580089, 580090, 580091, 580092, 580093, 580094, 580095, 580096, 580097, 580098, 580099, 580100, 580101, 580102, 580103, 580104, 580105, 580106, 580107, 580108, 580109, 580110, 580111, 580112, 580113, 580114, 580115, 580116, 580117, 580118, 580119, 580120, 580121, 580122, 580123, 580124, 580125, 580126, 580127, 580128, 580129, 580130, 580131, 580132, 580133, 580134, 580135, 580136, 580137, 580138, 580139, 580140, 580141, 580142, 580151, 580152, 580153, 580154, 580155, 580156, 580189, 580190, 580295, 580296, 580297, 580298, 580299, 580300, 580301, 580302, 580303, 580304, 580305, 580306, 580307, 580308, 580309, 580310, 580311, 580312, 580313, 580314, 580315, 580316, 580317, 580318, 580319, 580320, 580321, 580322, 580323, 580324, 580325, 580326, 580327, 580328, 580329, 580330, 580331, 580332, 580333, 580334, 580335, 580336, 580337, 580338, 580339, 580340, 580341, 580342, 580343, 580344, 695376, 704865, 704866, 704867, 704868, 704869, 704870, 704871, 704872, 704873, 704874, 704875, 704876, 704877, 704878, 704879, 704880, 704881, 704882, 704883, 704884, 704884, 704885, 704886, 704887, 704888, 704889, 704890, 704891, 704893.	Granted	Ontario, Canada	100%
Pickle Lake – Dorothy Dobie	104984, 105912, 106176, 106277, 106701, 108546, 108547, 110665, 112086, 112889, 112990, 123364, 124723, 128625, 129964, 130012, 130849, 130944, 130945, 131221, 133040, 133429, 134232, 134448, 134753, 135762, 136226, 140102, 140103, 140104, 141205, 143008, 143009, 145694, 146037, 146857, 146858, 147714, 149493, 149494, 150199, 150524, 150822, 150823, 154016, 154661, 155274, 156088, 157127, 159811, 161295, 161344, 161961, 162581, 162582, 163914, 163956, 166547, 166548, 168691, 169333, 169948, 176602, 176661, 176770, 176793, 176991, 178279, 178630, 178776, 181433, 181634,	Granted	Ontario, Canada	100%



**ARDIDEN**

Gold Projects	Tenement Number/Claim ID	Status	Location	Beneficial Percentage Interest
	183363, 183657, 183658, 183659, 183660, 183661, 183802, 186059, 186838, 186839, 186840, 187792, 187793, 192633, 193812, 195459, 195771, 196502, 200893, 201767, 205183, 205184, 205185, 207317, 207318, 208735, 208736, 209087, 212985, 213019, 213020, 214000, 214531, 215430, 215446, 215505, 217414, 221873, 223180, 223229, 225203, 231209, 231210, 231211, 233344, 234028, 234647, 235998, 236504, 236505, 236506, 236858, 237737, 237738, 242025, 242026, 242027, 242865, 242885, 245369, 246370, 246778, 248523, 250184, 250376, 250377, 250729, 250918, 250919, 250920, 251226, 251227, 252855, 253832, 253833, 253834, 254138, 254139, 254140, 255485, 255486, 257815, 257816, 261457, 261968, 262541, 265913, 265914, 269312, 269419, 272648, 273934, 273935, 274481, 277187, 279407, 279431, 279432, 282045, 282178, 282650, 284007, 287953, 287954, 289318, 290701, 292076, 292077, 292078, 297909, 297946, 298040, 299720, 299721, 300389, 301466, 302098, 302509, 302510, 303780, 308300, 308702, 308703, 308704, 310059, 310268, 310973, 311804, 316960, 316961, 316984, 316985, 317711, 319530, 319856, 322018, 323277, 323278, 323279, 329251, 329351, 332358, 333405, 334448, 336319, 336320, 337656, 337657, 337827, 337828, 338360, 340200, 340994, 342957, 343786, 343787, 343788, 566618, 566619, 566620, 566621, 566622, 566623, 566624, 566625, 566626, 566627, 566628, 566629, 566630, 566631, 566632, 566633, 566634, 566635, 566636, 566637, 566638, 566639, 566640, 566641, 566642, 566643, 566644, 566645, 566646, 566647, 566648, 566649, 566650, 566651, 566652, 566653, 566654, 566655, 566656, 566657, 566658, 566659, 566660, 566661, 566662, 566663, 566664, 566935, 566936, 566937, 566938, 566939, 566940, 566941, 566942, 566943, 566944, 566945, 566946, 566947, 566948, 566949, 566950, 566951, 566952, 566953, 566954, 566955, 566956, 566957, 566958, 566959, 566960, 566961, 566962, 566963, 566964, 566965, 566966, 566967, 566968, 566969, 566970, 566971, 566972, 566973, 566974, 566975, 566976, 566977, 566978, 566979, 566980, 566981, 566982, 566983, 566984.			
Pickle Lake – Dorothy Dobie North	613951, 613952, 613953, 613954, 613955, 613956, 613957, 613958, 613959, 613960, 613961, 613962, 613963, 613964, 613965, 613966, 613967, 613968, 613969, 613970, 613971, 613972, 613973, 613974, 613975, 613976, 613977, 613978, 613979, 613980, 613981, 613982, 613983, 613984, 613985, 613986, 613987, 613988, 613989, 613990, 613991, 613992, 613993, 613994, 613995, 613996, 613997, 613998, 613999, 614000, 614001, 614002, 614003, 614004, 614005, 614006, 614007, 614008, 614009, 614010, 614011, 614012, 614013, 614014, 614015, 614016, 614017, 614018, 614019, 614020, 614021, 614022, 614023, 614024, 614025, 614026, 614027, 614028, 614029, 614030, 614031, 614032, 614033, 614034, 614035, 614036, 614037, 614038, 614039, 614040, 614041, 614042, 614043, 614044, 614045, 614046, 614047, 614048, 614049, 614050, 614051, 614052, 614053, 614054, 614055, 614056, 614057, 614058, 614059, 614060, 614061, 614062, 614063, 614064, 614065, 614066, 614067, 614068, 614069, 614070, 614071, 614072, 614073, 614074, 614075, 614076, 614077, 614078, 614079, 614080, 614081, 614082, 614083, 614084, 614085, 614086, 614087, 614088, 614089, 614090, 614091, 614092, 614093, 614094, 614095, 614096, 614097, 614098, 614099, 614100, 614101, 614102, 614103, 614104, 614105, 614106, 614107, 614108, 614109, 614110, 614111, 614112, 614113, 614114, 614115, 614116, 614117, 614118, 614119, 614120, 614121, 614122, 614123, 614124, 614125, 614126, 614127, 614128, 614129, 614130, 614131, 614132, 614133, 614134, 614135, 614136, 614137, 614138, 614139, 614140, 614141, 614142.	Granted	Ontario, Canada	100%





**ARDIDEN**

Gold Projects	Tenement Number/Claim ID	Status	Location	Beneficial Percentage Interest
	614143, 614144, 614145, 614146, 614147, 614148, 614149, 614150, 614151, 614152, 614153, 614154, 614155, 614156, 614157, 614158, 614159, 614160, 614161, 614162, 614163, 614164, 614165, 614166, 614167, 614168, 614169, 614170, 614171, 614172, 614173, 614174, 614175, 614176, 614177, 614178, 614179, 614180, 614181, 614182, 614183, 614184, 614185, 614186, 614187, 614188, 614189, 614190, 614191, 614192, 614193, 614194, 614195, 614196, 614197, 614198, 614199, 614200, 614201, 614202, 614203, 614204, 614205, 614206, 614207, 614208, 614209, 614210, 614211, 614212, 614213, 614214, 614215, 614216, 614217, 614218, 614219, 614220, 614221, 614222, 614223, 614224, 614225, 614226, 614227, 614228, 614229, 614230, 614231, 614232, 695374.			
Pickle Lake – Duffell Lake	579696, 579697, 579698, 579699, 579700, 579701, 579702, 579703, 579704, 579705, 579706, 579707, 579708, 579709, 579710, 579711, 579712, 579713, 579714, 579715, 579716, 579717, 579718, 579719, 579720, 579721, 579722, 579723, 579724, 579725, 579726, 579727, 579728, 579729, 579730, 579731, 579732, 579733, 579734, 579735, 579736, 579737, 579738, 579739, 579740, 579741, 579742, 579743, 579744, 579745, 579746, 579747, 579748, 579749, 579750, 579751, 579752, 579753, 579754, 579755, 579756, 579757, 579758, 579759, 579760, 579761, 579762, 579763, 579764, 579765, 579766, 579767, 579768, 579769, 579993, 579994, 579995, 579996, 579999, 580000, 580001, 580002, 580003, 580011, 580012, 580013, 580014, 695351, 695352.	Granted	Ontario, Canada	100%
Pickle Lake – Fry-McVean	581408, 581409, 581410, 581411, 581412, 581413, 581414, 581415, 581416, 581417, 581418, 581419, 581420, 581421, 581422, 581423, 581424, 581425, 581426, 581427, 581428, 581429, 581430, 581431, 581432, 581433, 581434, 581435, 581436, 581437, 581438, 581439, 581440, 581441, 581442, 581443, 581444, 581445, 581446, 581447, 581448, 581449, 581450, 581451, 581452, 581453, 581454, 581455, 581456, 581457, 581458, 581459, 581460, 581461, 581462, 581463, 581464, 581465, 581466, 581467, 581468, 581469, 581470, 581471, 581472, 581473, 581474, 581475, 581476, 581477, 581478, 581479, 581480, 581481, 581482, 581483, 581484, 581485, 581486, 581487, 581488, 581489, 581490, 581491, 581492, 581493, 581494, 581495, 581496, 581497, 581498, 581499, 581500, 581501, 581502, 581503, 581504, 581505, 581506, 581507, 581508, 581509, 581510, 581511, 581512, 581513, 581514, 581515, 581516, 581517, 581518, 581519, 581520, 581521, 581522, 581523, 581524, 581525, 581526, 581527, 581528, 581529, 581530, 581531, 581532, 581533, 581534, 581535, 581536, 581537, 581538, 581539, 581540, 581541, 581542, 581543, 581544, 581545, 581546, 581547, 581548, 581549, 581550, 581551, 581552, 581553, 581554, 581555, 581556, 581557, 581558, 581559, 581560, 581561, 581562, 581563, 581564, 581565, 581566, 581567, 581568, 581569, 581570, 581571, 581572, 581573, 581574, 581575, 581576, 581577, 581578, 581579, 581580, 581581, 581582, 581583, 581584, 581585, 581586, 581587, 581588, 581589, 581590, 581591, 581592, 581593, 581594, 581595, 581596, 581597, 581598, 581599, 581600, 581601, 581602, 581603, 581604, 581605, 581606, 581607, 581608, 581609, 581610, 581611, 581612, 581613, 581614, 581615, 581616, 581617, 581618, 581619, 581620, 581621, 581622, 581623, 581624, 581625, 581626, 581627, 581628, 581629, 581630, 581631, 581632, 581633, 581634, 581635, 581636, 581637, 581638, 581639, 581640, 581641, 581642, 581643, 581644, 581645, 581646, 581647, 581648, 581649, 581650, 581651, 581652, 581653, 581654, 581655, 581656, 581657, 581658, 581659, 581660, 581661, 581662, 581663,	Granted	Ontario, Canada	100%



**ARDIDEN**

Gold Projects	Tenement Number/Claim ID	Status	Location	Beneficial Percentage Interest
	581664, 581665, 581666, 581667, 581668, 581669, 581670, 581671, 581672, 581673, 581674, 581675, 581676, 581677, 581678, 581679, 581680, 581681, 581682, 581683, 581684, 581685, 581686, 581687, 581688, 581689, 581690, 581691, 581692, 581693, 581694, 581695, 581696, 581697, 581698, 581699, 581700, 581701, 581702, 581703, 581704, 581705, 581706, 581707, 581726, 581727, 581728, 581729, 581730, 581731, 581732, 581733, 581734, 581735, 581736, 581737, 581738, 581739, 581740, 581741, 581742, 581743, 581744, 581745, 581746, 581747, 581748, 581749, 581750, 581751, 581752, 581753, 581754, 581755, 581756, 581757, 581758, 581759, 581760, 581761, 581762, 581763, 581764, 581765, 581766, 581767, 581768, 581769, 581770, 581771, 581772, 581773, 581774, 581775, 581779, 581780, 581781, 581782, 581783, 581784, 581785, 581786, 581787, 581788, 581789, 581790, 581791, 581792, 581793, 581794, 581795, 581796, 581797, 581798, 581799, 581800, 581801, 581802, 581803, 581804, 581805, 581806, 581807, 581808, 581809, 581810, 581811, 581812, 581813, 581814, 581815, 581816, 581817, 581818, 581819, 581820, 581821, 581822, 581823, 581824, 581825, 581826, 581827, 581828, 581830, 581831, 581832, 581833, 581834, 581835, 581836, 581837, 581838, 581839, 581840, 581841, 581842, 581843, 581844, 581845, 581846, 581847, 581848, 581849, 581850, 581851, 581852, 581853, 581854, 581855, 581856, 581857, 581858, 581859, 581860, 581861, 581862, 581863, 581864, 581865, 581866, 581867, 581868, 581869, 581870, 581871, 581872, 581873, 581874, 581875, 581876, 581877, 581878, 581879, 581880, 581881, 581882, 581883, 581884, 581885, 581886, 581887, 581888, 581889, 581890, 581891, 581892, 581893, 581894, 581895, 581896, 581897, 581898, 581899, 581900, 581901, 581902, 581903, 581904, 581905, 581906, 581907, 581908, 581909, 581910, 581911, 581912, 581913, 581914, 581915, 581916, 581917, 581918, 581919, 581920, 581921, 581922, 581923, 581924, 581925, 581926, 581927, 581928, 581929, 581930, 581931, 581932, 581933, 581934, 581935, 581936, 581937, 581938, 581939, 581940, 581941, 581942, 581943, 581944, 581945, 581946, 581947, 581948, 581949, 581950, 581951, 581952, 581953, 581954, 581955, 581956, 581957, 581958, 581959, 581960, 581961, 581962, 581963, 581964, 581965, 581966, 581967, 581968, 581969, 581970, 581971, 581972, 581973, 581974, 581975, 581976, 581977, 581978, 581979, 581981, 581982, 581983, 581984, 581985, 581986, 581987, 581988, 581989, 581990, 581991, 581992, 581993, 581994, 581995, 581996, 581997, 581998, 581999, 582000, 582001, 582002, 582003, 582004, 582005, 582006, 582007, 582008, 582009, 582010, 582011, 582012, 582013, 582014, 582015, 582016, 582017, 582018, 582019, 582020, 582021, 582022, 582023, 582024, 582025, 582026, 582027, 582028, 582029, 582030, 582031, 582032, 582033, 582034, 582035, 582036, 582037, 582038, 582039, 582040, 582041, 582042, 582043, 582044, 582045, 582046, 582047, 582048, 582049, 582050, 582051, 582052, 582053, 582054, 582055, 582056, 582057, 582058, 582059, 582060, 582061, 582062, 582063, 582064, 582065, 582066, 582067, 582068, 582069, 582070, 582071, 582072, 582073, 582074, 582075, 582076, 582077, 582078, 582079, 582080, 582081, 582082, 582083, 582084, 582085, 582086, 582087, 582088, 582089, 582090, 582091, 582092, 582093, 582094, 582095, 582096, 582097, 582098, 582099, 582100, 582101, 582102, 582103, 582104, 582105, 582106, 582107, 582108, 582109, 582110, 582111, 582112, 582113, 582114, 582115, 582116, 582117, 582118, 582119, 582120, 582121, 582122, 582123, 582124, 582125, 582126, 582127, 582128, 582129, 582130, 582131, 582132, 582133, 582134,			



**ARDIDEN**

Gold Projects	Tenement Number/Claim ID	Status	Location	Beneficial Percentage Interest
	582135, 582136, 582137, 582138, 582139, 582140, 582141, 582142, 582143, 582144, 582145, 582146, 582147, 582148, 582149, 582150, 582151, 582152, 582153, 582154, 582155, 582156, 582157, 582158, 582159, 582160, 582161, 582162, 582163, 582164, 582165, 582166, 582167, 582168, 582169, 582170, 582171, 582172, 582173, 582174, 582175, 582176, 582177, 582178, 582179, 582180, 582181, 582182, 582183, 582184, 582185, 582186, 582187, 582188, 582189, 582190, 582191, 582192, 582193, 582194, 582195, 582196, 582197, 582198, 582199, 582200, 582201, 582202, 582203, 582204, 582205, 582206, 582207, 582208, 582209, 582210, 582211, 582212, 582213, 582214, 582215, 582216, 582217, 582218, 582219, 582220, 582221, 582222, 582223, 582224, 582225, 582226, 582227, 582228, 582229, 582230, 582231, 582232, 695231, 695232, 695233, 695234, 695235, 695236, 695237, 695238, 695239, 695240, 695241, 695242, 695243, 695244, 695245, 695246, 695247, 695248, 695249, 695250, 695251, 695252, 695253, 695254, 695255, 695256, 695257, 695258, 695259, 695260, 695261, 695262, 695263, 695264, 695265, 695266, 695267, 695268, 695269, 695270, 695271, 695272, 695273, 695274, 695275, 695276, 695277, 695278, 695279, 695280, 695281, 695282, 695283, 695284, 695285, 695286, 695287, 695288, 695289, 695290, 695291, 695292, 695293, 695294, 695295, 695296, 695297, 695298, 695299, 695300, 695301, 695302, 695303, 695304, 695305, 695306, 695307, 695308, 695309, 695310, 695311, 695312, 695313, 695314, 695315, 695316, 695317, 695318, 695319, 695320, 695321, 695322, 695323, 695324, 695325, 695367, 723858, 723859, 723860, 723861, 723862, 723863, 723864.			
Pickle Lake – Jean Lake	574692, 574693, 574694, 574695, 574696, 574697, 574698, 574699, 574700, 574701, 574702, 574703, 574704, 574705, 574706, 574707, 574708, 574709, 574710, 574711, 574712, 574713, 574714, 574715, 574716, 574717, 574718, 574719, 574720, 574721, 574730, 574734, 574735, 574736, 574737, 574738, 574739, 574740, 574741, 574792, 574793, 574794, 574795, 574796, 574797, 574798, 574799, 574800, 574801, 574802, 574803, 574804, 574805, 574806, 574807, 574808, 574809, 574810, 574811, 574812, 574813, 574814, 574815, 574816, 574817, 574818, 574819, 574820, 574821, 574822, 574823, 574824, 574825, 574826, 574827, 574828, 574829, 574830, 574831, 574832, 574833, 574834, 574835, 574836, 574837, 574838, 574839, 574840, 574841, 574864, 574865, 574866, 574867, 574868, 574869, 574870.	Granted	Ontario, Canada	100%
Pickle Lake – Kasagiminnis	107775, 110169, 122181, 122182, 122183, 122898, 122899, 124715, 124716, 124717, 133631, 136219, 136220, 136221, 141049, 142242, 178845, 178846, 181427, 186270, 187592, 188198, 198429, 198430, 199793, 200883, 236848, 236849, 253606, 253607, 254414, 265109, 266397, 281542, 282778, 289590, 290904, 290905, 292065, 292066, 301653, 310309, 310310, 310311, 310962, 319583, 340456, 341762, 341763, 703842, 713441, 713443.	Granted	Ontario, Canada	100%
Pickle Lake – Kasagiminnis North	614233, 614234, 614235, 614236, 614237, 614238, 614239, 614240, 614241, 614242, 614243, 614244, 614245, 614246, 614247, 614248, 614249, 614250, 614251, 614252, 614253, 614254, 614255, 614256, 614257, 614258, 614259, 614260, 614261, 614262, 614263, 614264, 614265, 614266, 614267, 614268, 614269, 614270, 614271, 614272, 614273, 614274, 614275, 614276, 614277, 614278, 614279, 614280, 614281, 614282, 614283, 614284, 614285, 614286, 614287, 614288, 614289, 614290, 614291, 614292, 614293, 614294, 614295, 614296, 614297, 614298, 614299, 614300, 614301, 614302, 614303, 614304, 614305, 614306, 614307, 614308, 614309, 614310, 614311, 614312,	Granted	Ontario, Canada	100%





**ARDIDEN**

Gold Projects	Tenement Number/Claim ID	Status	Location	Beneficial Percentage Interest
	614313, 614314, 614315, 614316, 614317, 614318, 614319, 614320, 614321, 614322, 614323, 614324, 614325, 614326, 614327, 614328, 614329, 614330, 614331, 614332, 614333, 614334, 614335, 614336, 614337, 614338, 614339, 614340, 614341, 614342, 614343, 614344, 614345, 614346, 614347, 614348, 614349, 614350, 614351, 614352, 614353, 614354, 614355, 614356, 614357, 614358, 614359, 614360, 614361, 614362, 614363, 614364, 614365, 614366, 614367, 614368, 614369, 614370, 614371, 614372, 614373, 614374, 614375, 614376, 614377, 614378, 614379, 614380, 614381, 614382, 614383, 614384, 614385, 614386, 614387, 614388, 614389, 614390, 614391, 614392, 614393, 614394, 614395, 614396, 614397, 614398, 614399, 614400, 614401, 614402, 614403, 614404, 614405, 614406, 614407, 614408, 614409, 614410, 614411, 614412, 614413, 614414, 614415, 614416, 614417, 614418, 614419, 614420, 614421, 614422, 614423, 614424, 614425, 614426, 614427, 614428, 614429, 614430, 614431, 614432, 614433, 614434, 614435, 614436, 614437, 614438, 614439, 614440, 614441, 614442, 614443, 614444, 614445, 614446, 614447, 614448, 614449, 614450, 614451, 614452, 614453, 614454, 614455, 614456, 614457, 614458, 614459, 614460, 614461, 614462, 614463, 614464, 614465, 614466, 614467, 614468, 614469, 614470, 614471, 614472, 614473, 614474, 614475, 614476, 614477, 614478, 614479, 614480, 614481, 614482, 614483, 614484, 614485, 614486, 614487, 614488, 614489, 614490, 614491, 614492, 614493, 614494, 614495, 614496, 614497, 614498, 614499, 614500, 614501, 614502, 614503, 614504, 614505, 614506, 614507, 614508, 614509, 614510, 614511, 614512, 614513, 614514, 614515, 614516, 614517, 614518, 614519, 614520, 614521, 614522, 614523, 614524, 614525, 614526, 614527, 614528, 614529, 614530, 614531, 614532, 614533, 614534, 614535, 614536, 614537, 614538, 614539, 614540, 614541, 614542, 614543, 614544, 614545, 614546, 614547, 614548, 614549, 614550, 614551, 614552, 614553, 614554, 614555, 614556, 614557, 614558, 614559, 614560, 614561, 614562, 614563, 614564, 614565, 614566, 614567, 614568, 614569, 614570, 614571, 614572, 614573, 614574, 614575, 614576, 614577, 614578, 614579, 614580, 614581, 614582, 614583, 614584, 614585, 614586, 614587, 614588, 614589, 614590, 614591, 614592, 614593, 614594, 614595, 614596, 614597, 614598, 614599, 614600, 614601, 614602, 614603, 614604, 614605, 614606, 614607, 614608, 614609, 614610, 742484, 742485, 742486, 742487, 742488, 742489, 742490, 742491, 742492, 742493, 742493, 742494, 742495, 742496, 742497, 742498.			
Pickle Lake – Kawashe Lake	574871, 574872, 574873, 574874, 574875, 574876, 574877, 574878, 574879, 574880, 574881, 574882, 574883, 574884, 574885, 574886, 574887, 574888, 574889, 574890, 574891, 574892, 574893, 574894, 574895, 574896, 574897, 574898, 574899, 574900, 574901, 574902, 574903, 574904, 574905, 574906, 574907, 574908, 574909, 574910, 574911, 574912, 574913, 574914, 574915, 574916, 574917, 574918, 574919, 574920, 574921, 574922, 574923, 574924, 574925, 574926, 574927, 574928, 574929, 574930, 574931, 574932, 574933, 574934, 574935, 574936, 574937, 574938, 574939, 574940, 574941, 574942, 574943, 574944, 574945, 574946, 574947, 574948, 574949, 574950, 574951, 574952, 574953, 574954, 574955, 574956, 574957, 574958, 574959, 574960, 574961, 574962, 574963, 574964, 574965, 574966, 574967, 574968, 574969, 574970, 574971, 574972, 574973, 574974, 574975, 574976, 574977, 574978, 574979, 574980, 574981, 574982, 574983, 574984, 574985, 574986, 574987, 574988, 574989, 574990, 574991, 574992, 574993, 574994, 574995, 574996, 574997, 574998,			



**ARDIDEN**

Gold Projects	Tenement Number/Claim ID	Status	Location	Beneficial Percentage Interest
	574999, 575000, 575001, 575002, 575003, 575004, 575005, 575006, 575007, 575008, 575009, 575010, 575011, 575012, 575013, 575014, 575015, 575016, 575017, 575018, 575019, 575020, 575021, 575022, 575023, 575024, 575025, 575026, 575027, 575028, 575029, 575030, 575031, 575032, 575033, 575034, 575035, 575036, 575037, 575038, 575039, 575040, 575041, 575042, 575043, 575044, 575045, 575046, 575047, 575048, 575049, 575050, 575051, 575052, 575053, 575054, 575055, 575056, 575057, 575058, 575059, 575060, 575061, 575062, 575063, 575064, 575065, 575066, 575067, 575068, 575069, 575070, 575071, 575072, 575073, 575074, 575075, 575076, 575077, 575078, 575079, 575080, 575081, 575082, 575083, 575084, 575085, 575086, 575087, 575088, 575089, 575090, 575091, 575092, 575093, 575094, 575095, 575096, 575097, 575098, 575099, 575100, 575101, 575102, 575103, 575104, 575105, 575106, 575107, 575108, 575109, 575110, 575111, 575112, 575113, 575114, 575115, 575116, 575117, 575118, 575119, 575120, 575121, 575122, 575123, 575124, 575125, 575126, 575127, 575128, 575129, 575130, 575131, 575132, 575133, 575134, 575135, 575136, 575137, 575138, 575139, 575140, 575141, 575142, 575143, 575144, 575145, 575146, 575147, 575148, 575149, 575150, 575151, 575152, 575153, 575154, 575155, 575156, 575157, 575158, 575159, 575160, 575161, 575162, 575163, 575164, 575165, 575166, 575167, 575168, 575169, 575170, 575171, 575172, 575173, 575174, 575175, 575176, 575177, 575178, 575179, 575180, 575181, 575182, 575183, 575184, 575185, 575186, 575187, 575188, 575189, 575190, 575191, 575192, 575193, 575194, 575195, 575196, 575197, 575198, 719921.			
Pickle Lake – Kawashe Lake North	625482, 625483, 625484, 625485, 625486, 625487, 625488, 625489, 625490, 625491, 625492, 625493, 625494, 625495, 625496, 625497, 625498, 625499, 625500, 625502, 625503, 625504, 625505, 625506, 625507, 625508, 625509, 625510, 625511, 625512, 625513, 625514, 625515, 625516, 625517, 625518, 625519, 625520, 625521, 625522, 625523, 625524, 625525, 625526, 625527, 625528, 625529, 625530, 625531, 625532, 625533, 625534, 625535, 625536, 625537, 625538, 625539, 625540, 625541, 625542, 625543, 625544, 625545, 625546.	Granted	Ontario, Canada	100%
Pickle Lake – Keating Lake	574492, 574493, 574494, 574495, 574496, 574497, 574498, 574499, 574500, 574501, 574502, 574503, 574504, 574505, 574506, 574507, 574508, 574509, 574510, 574511, 574512, 574513, 574514, 574515, 574516, 574517, 574518, 574519, 574520, 574521, 574522, 574523, 574524, 574525, 574526, 574527, 574528, 574529, 574530, 574531, 574532, 574533, 574534, 574535, 574536, 574537, 574538, 574539, 574540, 574541, 574542, 574543, 574544, 574545, 574546, 574547, 574548, 574549, 574550, 574551, 574552, 574553, 574554, 574555, 574556, 574557, 574558, 574559, 574560, 574561, 574562, 574563, 574564, 574565, 574566, 574567, 574568, 574569, 574570, 574571, 574572, 574573, 574574, 574575, 574576, 574577, 574578, 574579, 574580, 574581, 574582, 574583, 574584, 574585, 574586, 574587, 574588, 574589, 574590, 574591, 574722, 574723, 574724, 574725, 574726, 574727, 574728, 574729, 574731, 574732, 574733, 579929, 579930, 579931, 579932, 579933, 579934, 579935, 579936, 579937, 579938, 579939, 579940, 579941, 579942, 579943, 579944, 579945, 579946, 579947, 579948, 579949, 579950, 579951, 579952, 579953, 579954, 579955, 579956, 579957, 579958, 579959, 579960, 579961, 579962, 579963, 579964, 579965, 579966, 579967, 579968, 579969, 579970, 579971, 579972, 579973, 579974, 579975, 579976, 579977, 579978.	Granted	Ontario, Canada	100%



**ARDIDEN**

Gold Projects	Tenement Number/Claim ID	Status	Location	Beneficial Percentage Interest
Pickle Lake – Meen Lake	579775, 579776, 579777, 579778, 579779, 579780, 579781, 579782, 579783, 579784, 579785, 579786, 579787, 579788, 579789, 579790, 579791, 579792, 579793, 579794, 579795, 579796, 579797, 579798, 579799, 579800, 579801, 579802, 579803, 579804, 579805, 579806, 579807, 579808, 579809, 579810, 579811, 579812, 579813, 579814, 579815, 579816, 579817, 579818, 579819, 579820, 579821, 579822, 579823, 579824, 579825, 579826, 579827, 579828, 579829, 579830, 579831, 579832, 579833, 579834, 579835, 579836, 579837, 579838, 579839, 579840, 579841, 579842, 579843, 579844, 579845, 579846, 579847, 579848, 579849, 579850, 579851, 579852, 579853, 579854, 579855, 579856, 579857, 579858, 579859, 579860, 579861, 579862, 579863, 579864, 579865, 579866, 579867, 579868, 579869, 579870, 579871, 579872, 579873, 579874, 579875, 579876, 579877, 579878, 579879, 579880, 579881, 579882, 579883, 579884, 579885, 579886, 579887, 579888, 579889, 579890, 579891, 579892, 579893, 579894, 579895, 579896, 579897, 579898, 579899, 579900, 579901, 579902, 579903, 579904, 579905, 579906, 579907, 579908, 579909, 579910, 579911, 579912, 579913, 579914, 579915, 579916, 579917, 579918, 579919, 579920, 579921, 579922, 579923, 579924, 579925, 579926, 579927, 579928, 695369, 695688, 706126, 706127, 706128, 706129, 706130, 706131, 706132, 706133, 706134, 706135, 706136, 706137, 706138, 706139, 706140, 706141, 706142, 706143, 706144, 706145, 706146, 706149, 706150, 706151, 706152, 706153, 706154, 706155, 706156, 706157, 706158, 706159, 706160, 706161, 706162, 706163, 706164, 706165, 706166, 706167, 706168, 706169, 706170, 706171, 706172, 706173, 706174, 706175, 706176, 706177, 706178, 706179, 706180, 706181, 706182, 706183, 706184, 706185, 706186, 706187, 706188, 706189, 706190, 706191, 706192, 706193, 706194, 706195, 706196, 706197, 706198, 706199, 706200, 706201, 706202, 706203, 706204, 706205, 706206, 706207, 706208, 706209, 706210, 706211, 706212, 706213, 706214, 706215, 706216, 706217, 706218, 706219, 706220, 706221, 706222, 706223, 706224, 706225, 706226, 706227, 706228, 706229, 706230, 706231, 706232, 706233, 706234, 706235, 706236, 706237, 706238, 706239, 706240, 706241, 706242, 706243, 706244, 706245, 706246, 706247, 706248, 706249, 706250, 706251, 706252, 706253, 706254, 706255, 706256, 706257, 706258, 706259, 706260, 706261, 706262, 706263, 706264, 706265, 706266, 706267, 706268, 706269, 706270, 706271, 706272, 706273, 706274, 706275, 706276, 706277, 706278, 706279, 706280, 706281, 706282, 706283, 706284, 706285, 706286, 706287, 706288, 706289, 706290, 706291, 706292, 706293, 706294, 706295, 706296, 706297, 706298, 706299, 706300, 706301, 706302, 706303, 706304, 706305, 706306, 706307, 706308, 706309, 706310, 706311, 706312, 706313, 706314, 706315, 706316, 706317, 706318, 706319, 706320, 706321, 706322, 706323, 706324, 706325, 706326, 706327, 706328, 706329, 706330, 706331, 706332, 706333, 706334, 706335, 706336, 706337, 706338, 706339, 706340, 706341, 706342, 706343, 706344, 706345, 706346, 706347, 706348.	Granted	Ontario, Canada	100%
Pickle Lake - Nabemakoseka	704777, 704778, 704779, 704780, 704781, 704782, 704783, 704784, 704785, 704786, 704787, 704788, 704789, 704790, 704791, 704792, 704793, 704794, 704795, 704796, 704797, 704798, 704799, 704800, 704801, 704802, 704803, 704804, 704805, 704806, 704807, 704808, 704809, 704810, 704811, 704812, 704813, 704814, 704815, 704816, 704817, 704818, 704819, 704820, 704821, 704822, 704823, 704824, 704825, 704826, 704827, 704828, 704829, 704830, 704831, 704832, 704833, 704834, 704835, 704836, 704837, 704838, 704839, 704840,	Granted	Ontario, Canada	100%





**ARDIDEN**

Gold Projects	Tenement Number/Claim ID	Status	Location	Beneficial Percentage Interest
	704841, 704842, 704843, 704844, 704845, 704846, 704847, 704849, 704850, 704851, 704852, 704853, 704854, 704855, 704856, 704857, 704858, 704859, 704860, 704969, 704970, 704971, 704972, 704973, 704974, 704975, 704976, 704977, 704978, 704979, 704980, 704981, 704982, 704983, 704984, 704985, 704986, 704987, 904988, 704989, 704990, 704991, 704992, 704993, 704994, 704995, 704996, 704997, 704998, 704999, 705000, 705001, 705002, 705003, 705004, 705005, 705006, 705007, 705008, 705009, 705010, 705011, 705012, 705013, 705014, 705015, 705016, 705017, 705018, 705019, 705020, 705021, 705022, 705023, 705024, 705025, 705026, 705027, 705028, 705029, 705030, 705031, 705032, 705033, 705034, 705035, 705036, 705037, 705038, 705039, 705040, 705041, 705042, 705043, 705044, 705045, 705046, 705047, 705048, 705049, 705050, 705051, 705052, 705053, 705054, 705055, 705056, 705057, 705058, 705059, 705060, 705061, 705062, 705063, 705064, 705065, 705066, 705067, 705068, 705069, 705070, 705071, 705072, 705073, 705074, 705075, 705076, 705077, 705078, 705079, 705080, 705081, 705082, 705083, 705084, 705085, 705086, 705087, 705088, 705089, 705090, 705091, 705092, 705093, 705094, 705095, 705096, 705097, 705098, 705099, 705100, 705101, 705102, 705103, 705104, 705105, 705106, 705107, 705108, 705109, 705110, 705111, 705112, 705113, 705114, 705115, 705116, 705117, 705118, 706097, 706098, 706099, 706100, 706101, 706102, 706103, 706104, 706105, 706106, 706107, 706108, 706109, 706110, 706111, 706112, 706113, 706114, 706115, 706116, 706117, 706118, 706119, 706120, 706121, 706122, 706123, 706124, 706125.			
Pickle Lake – New Patricia	131784, 147867, 147868, 147869, 147870, 147871, 159805, 161958, 184465, 193806, 196500, 211821, 214522, 214523, 214524, 240460, 248516, 248517, 248518, 248519, 251221, 260527, 300387, 315009, 315010, 315011, 317709, 329913, 329914, 329915, 329916, 335930, 339299, 500919, 500920, 500921, 500922, 500923, 500924, 500925, 500926, 500927, 500928, 500929, 500930, 500931, 500932, 500933, 500934, 500935, 500936, 500937, 500938, 500939, 500940, 500941, 500942, 500943, 500944, 500945, 500946, 500947, 500948, 500949, 500950, 500951, 500952, 500953, 500954, 500955, 500956, 500957, 500958, 500959, 500960, 500961, 500962, 500963, 500964, 500965, 500966, 500967, 500968, 500969, 500970, 500971, 500972, 500973, 500974, 500975, 500976, 500977, 500978, 500979, 500980, 500981, 500982, 500983, 500984, 500985, 500986, 500987, 500988, 500989, 500990, 500991, 500992, 500993, 500994, 500995, 500996, 500997, 500998, 500999, 501000, 501001, 501002, 501003, 501004, 501005, 501006, 501007, 501008, 501009, 501010, 501011, 501012, 501013, 501014, 501015, 501016, 501017, 501018, 501142, 501143, 501144, 501145, 501146, 501147, 501148, 501149, 501150, 501151, 501152, 501153, 501154, 501155, 501156, 501157, 501158, 501159, 501160, 501161, 501162, 501163, 501164, 501165, 501166, 501167, 501168, 501169, 501170, 501171, 501172, 501173, 501174, 501175, 501176, 501177, 501178, 501179, 501180, 501181, 501182, 501183, 501184, 501185, 501186, 501187, 501188, 501189, 501190, 501191, 501210, 501211, 501212, 501213, 501214, 501215, 501216, 501217, 501218, 501219, 501220, 501221, 501222, 501223, 501224, 501225, 501226, 501227, 501228, 501229, 501230, 501231, 501232, 501233, 501234, 501235, 501236, 501237, 501238, 501239, 501240, 501241, 501242, 501243, 501244, 501245, 501246, 501247, 501248, 501249, 501250, 501251, 501252, 501253, 501254, 501255, 501256, 501257, 501258, 501259, 501292, 501293, 501294, 501295, 501296, 501297, 501298, 501299, 501300, 501301, 501302, 501303, 501304, 501305, 501306.	Optioned	Ontario, Canada	Right to Earn 100%



**ARDIDEN**

Gold Projects	Tenement Number/Claim ID	Status	Location	Beneficial Percentage Interest
	501307, 501308, 501309, 501310, 501311, 501312, 501313, 501314, 501315, 501316, 501317, 501318, 501319, 501320, 501321, 501322, 501323, 501324, 501325, 501326, 501327, 501328, 501329, 501330, 501331, 501332, 501333, 501339, 501340, 501341, 501342, 501343, 501344, 501345, 501346, 501347, 501348, 501349, 501350, 501351, 501352, 501353, 501354, 501355, 501356, 501357, 501358, 501359, 501360, 501361, 501362, 501363, 501364, 501365, 501366, 501367, 501368, 501369, 501370, 501371, 501372, 501373, 501374, 501375, 501376, 501377, 501378, 501379, 501380, 501381, 501382, 501383, 501384, 501385, 501386, 501387, 501388, 501527, 501528, 501529, 501530, 501531, 501532, 501533, 501534, 501535, 501536, 501537, 501538, 501539, 501540, 501541, 501542, 501543, 501544, 501545, 501546, 501547, 501548, 501549, 501550, 501551, 501552, 501568, 501569, 501570, 501571, 501572, 501573, 501574, 501575, 501576, 501577, 501578, 501579, 501580, 501581, 501582, 501583, 501584, 501585, 501586, 501587, 501588, 501589, 501590, 501591, 501592, 501593, 501594, 501595, 501596, 501597, 501598, 501599, 501600, 501601, 501602, 501603, 501604, 501605, 501606, 501607, 501608, 501609, 501610, 501611, 501612, 501613, 501614, 501615, 501616, 501617, 501814, 501815, 501816, 501817, 501818, 501819, 501820, 501821, 501822, 501823, 501824, 501825, 501826, 501827, 501828, 501829, 501830, 501831, 501832, 501833, 501834, 501835, 501836, 501837, 501838, 501839, 501840, 501841, 501842, 501843, 501844, 501845, 501846, 501847, 501848, 501849, 501850, 501851, 501852, 501853, 501854, 501855, 501856, 501857, 501858, 501859, 501860, 501861, 501862, 501863, 502011, 502012, 502013, 502014, 502015, 502016, 502017, 502018, 502019, 502020, 502021, 502022, 502023, 502024, 502025, 502026, 502027, 502028, 502029, 502030, 502031, 502032, 502033, 502034, 502035, 502036, 502037, 502038, 502039, 502040, 502041, 502042, 502043, 502044, 502045, 502046, 502047, 502048, 502049, 502050, 502051, 502052, 502053, 502054, 502055, 502056, 502057, 502058, 502059, 502060, 502132, 502133, 502134, 502135, 502136, 502137, 502138, 502139, 502140, 502141, 502142, 502143, 502144, 502145, 502146, 502147, 502148, 502149, 502150, 502151, 502152, 502153, 502154, 502155, 502156, 502157, 502158, 502159, 502160, 502161, 502162, 502163, 502164, 502165, 502166, 502167, 502168, 502169, 502170, 502171, 502172, 502173, 502174, 502175, 502176, 502177, 502178, 502179, 502180, 502181, 502227, 502229, 502231, 502232, 502234, 502236, 502238, 502240, 502241, 502243, 502245, 520337, 520338, 520339, 520340, 520935, 520936, 520937, 520938, 520939, 520940, 520941, 520942, 520943, 520944, 520945, 520946, 520947, 520948, 520949, 520950, 520951, 520952, 520953, 520954, 520955, 520956, 520957, 520958, 520959, 520960, 520961, 520962, 520963, 520964, 520965, 520966, 520967, 520968, 520969, 520970, 520971, 520972, 520973, 520974, 520975, 520976, 520977, 520978, 520979, 520980, 520981, 520982, 520983, 520984, 520985, 520986, 520987, 520988, 520989, 520990, 520991, 520992, 520993, 520994, 520995, 520996, 520997, 520998, 520999, 521000, 521001, 521002, 521003, 521004, 521005, 521006, 521007, 521008, 521009, 521010, 521011, 521012, 521013, 521014, 521015, 521016, 521017, 521018, 521019, 521020, 521021, 521022, 521023, 521024, 521025, 521026, 521027, 521028, 521029, 521030, 521031, 521032, 521033, 521034, 521035, 521036, 521037, 521038, 521039, 521040, 521041, 521042, 521043, 521044, 521045, 521046.			
Pickle Lake – Reylea Lake	580157, 580158, 580159, 580160, 580161, 580162, 580163, 580164, 580165, 580166, 580167, 580168, 580169, 580170, 580171, 580172,	Granted	Ontario, Canada	100%



**ARDIDEN**

Gold Projects	Tenement Number/Claim ID	Status	Location	Beneficial Percentage Interest
	580173, 580174, 580175, 580176, 580177, 580178, 580179, 580180, 580181, 580182, 580183, 580184, 580185, 580186, 580187, 580188, 580191, 580192, 580193, 580194, 580195, 580196, 580197, 580198, 580199, 580200, 580201, 580202, 580203, 580204, 580205, 580206, 580207, 580208, 580209, 580210, 580211, 580212, 580213, 580214, 580215, 580216, 580217, 580218, 580219, 580220, 580221, 580222, 580223, 580224, 580225, 580226, 580227, 580228, 580229, 580230, 580231, 580232, 580233, 580234, 580235, 580236, 580237, 580238, 580239, 580240, 580241, 580242, 580243, 580244, 580245, 580246, 580247, 580248, 580249, 580250, 580251, 580252, 580253, 580254, 580255, 580256, 580257, 580258, 580259, 580260, 580261, 580262, 580263, 580264, 580265, 580266, 580267, 580268, 580269, 580270, 580271, 580272, 580273, 580274, 580275, 580276, 580277, 580278, 580279, 580280, 580281, 580282, 580283, 580284, 580285, 580286, 580287, 580288, 580289, 580290, 580291, 580292, 580293, 580294.			
Pickle Lake – South Limb	100831, 101396, 101525, 101526, 102692, 102906, 116721, 118004, 118221, 121656, 121657, 125050, 125051, 125052, 125053, 125760, 125761, 125762, 129676, 160810, 164956, 166176, 166304, 166305, 169680, 169681, 173060, 178291, 178314, 178995, 178996, 178997, 179657, 189146, 189147, 189148, 194187, 194210, 194211, 194935, 194936, 194937, 195563, 218371, 219081, 224876, 225586, 225587, 225588, 226523, 226524, 226525, 227088, 231687, 232868, 260845, 262197, 262198, 265588, 266276, 266277, 266278, 268320, 268321, 268322, 273549, 273550, 281607, 282260, 282261, 285637, 285770, 289638, 289639, 293068, 293069, 293146, 293147, 297669, 297670, 321676, 321677, 322315, 328186, 328833, 328834, 328835, 341207, 341208, 535546, 535547, 535548, 535549, 535550, 535551, 535552, 535553, 535554, 535555, 535556, 535557, 551427, 562023, 562024, 562025, 562026.	Granted	Ontario, Canada	100%
Pickle Lake – Two Fifty	541335, 541338, 541339, 541340, 541342, 541343, 541347, 541348, 541349, 541351, 541352, 541353, 541354, 541356, 541357, 541362, 541363, 541364, 541365, 541367, 541368, 541369, 541370, 541371, 541372, 541373, 541374, 541376, 541377, 541378, 541379, 541380, 541381, 541382, 541383, 541384, 541385, 541387, 541388, 541389, 541390, 541391, 541392, 541393, 541394, 541395, 541396, 541397, 541398, 541399, 541400, 541401, 562623, 562624, 562625, 562626, 562627, 562628, 562629, 562630, 562631, 562632, 562633, 562634, 562635, 562637, 562638, 562639, 562640, 562641, 562642, 562643, 562644, 562645, 562646, 562647.	Granted	Ontario, Canada	100%
Pickle Lake – Two Fifty North	614611, 614612, 614613, 614614, 614615, 614616, 614617, 614618, 614619, 614620, 614621, 614622, 614623, 614624, 614625, 614626, 614627, 614628, 614629, 614630, 614631, 614632, 614633, 614634, 614635, 614636, 614637, 614638, 614639, 614640, 614641, 614642, 614643, 614644, 614645, 614646, 614647, 614648, 614649, 614650, 614651, 614652, 614653, 614654, 614655, 614656, 614657, 614658, 614659, 614660, 614661, 614662, 614663, 614664, 614665, 614666, 614667, 614668, 614669, 614670, 614671, 614672, 614673, 614674, 614675, 614676, 614677, 614678, 614679, 614680, 614681, 614682, 614683, 614684, 614685, 614686, 614687, 614688, 614689, 614690, 614691, 614692, 614693, 614694, 614695, 614696, 614697, 614698, 614699, 614700, 614701, 614702, 614703, 614704, 614705, 614706, 614707, 614708, 614709, 614710, 614711, 614712, 614713, 614714, 614715, 614716, 614717, 614718, 614719, 614720, 614721, 614722, 614723, 614724, 614725, 614726, 614727, 614728, 614729, 614730, 614731, 614732, 614733, 614734, 614735, 614736, 614737, 614738, 614739, 614740, 614741, 614742, 614743, 614744, 614745, 614746.	Granted	Ontario, Canada	100%





**ARDIDEN**

Gold Projects	Tenement Number/Claim ID	Status	Location	Beneficial Percentage Interest
	614747, 614748, 614749, 614750, 614751, 614752, 614753, 614754, 614755, 614756, 614757, 614758, 614759, 614760, 614761, 614762, 614763, 614764, 614765, 614766, 614767, 614768, 614769, 614770, 614771, 614772, 614773, 614774, 614775, 614776, 614777, 614778, 614779, 614780, 614781, 614782, 614783, 614784, 614785, 614786, 614787, 614788, 614789, 614790, 614791, 614792, 614793, 614794, 614795, 614796, 614797, 614798, 614799, 614800, 614801, 614802, 614803, 614804, 614805, 614806, 614807, 614808, 614809, 614810, 614811, 614812, 614813, 614814, 614815, 614816, 614817, 614818, 614819, 614820, 614821, 614822, 614823, 614824, 614825, 614826, 614827, 614828, 614829, 614830, 614831, 614832, 614833, 614834, 614835, 614836, 614837, 614838, 614839, 614840, 614841, 614842, 614843, 614844, 614845, 614846, 614847, 614848, 614849, 614850, 614851, 614852, 614853, 614854, 614855, 614856, 614857, 614858, 614859, 614860, 614861, 614862, 614863, 614864, 614865, 614866, 614867, 614868, 614869, 614870, 614871, 614872, 614873, 614874, 614875, 614876, 614877, 614878, 614879, 614880, 614881, 614882, 614883, 614884, 614885, 614886, 614887, 614888, 614889, 614890, 614891, 614892, 614893, 614894, 614895, 614896, 614897, 614898, 614899, 614900, 614901, 614902, 614903, 614904, 614905, 614906, 614907, 614908, 614909, 614910, 614911, 614912, 614913, 706353, 706354, 706355, 706356, 706357, 706358, 706359, 706365, 706366, 706367, 706368, 706369, 706370, 706371, 706372, 706373, 706374, 706375, 706376, 706377, 706378, 706379, 706380, 706381, 706382, 706383, 706384, 706385, 706386.			
Pickle Lake – West Pickle	104760, 104916, 104917, 104918, 104919, 104920, 105656, 105657, 120067, 120068, 126563, 128549, 128550, 138039, 139349, 147534, 147535, 147536, 155122, 155325, 165265, 171104, 171105, 171106, 171107, 173237, 173238, 176769, 184045, 187800, 191356, 191357, 199313, 199314, 199962, 207329, 227360, 227361, 236415, 239988, 248070, 248771, 248772, 250862, 256698, 256699, 266552, 267218, 267219, 273313, 285880, 285881, 287193, 293994, 295326, 295992, 300139, 303169, 306594, 316767, 316768, 320515, 323119, 325091, 325092, 333749, 333750, 333751, 335552, 336241, 336242, 338336, 345540, 345541, 345542, 345543, 541375, 541386.	Granted	Ontario, Canada	100%

Lithium Projects	Tenement Number/Claim ID	Status	Location	Beneficial Percentage Interest
Root Lake	101422, 101503, 101504, 101696, 116836, 117902, 121020, 121042, 121133, 121134, 122349, 122350, 122351, 124441, 152951, 160180, 160270, 160964, 160965, 160966, 166199, 166201, 166202, 166203, 166284, 169575, 179021, 179044, 179045, 182367, 194973, 196921, 214118, 214119, 214121, 214122, 214123, 214216, 214217, 214218, 217760, 225637, 225638, 232916, 232917, 232988, 232989, 233675, 261574, 262879, 269553, 269563, 269564, 269630, 272959, 281639, 281640, 282239, 285014, 289614, 290289, 290290, 298925, 298926, 298927, 298947, 298948, 298950, 321059, 321565, 328205, 328206, 328225, 328226, 328813, 329530, 329531, 340566, 340586, 340587, 340588, 340589, 340676, 341368, 341369, 341370, 553204, 553205, 553206, 553207, 553208, 553209, 553210, 553211, 553212, 553213, 553214, 553215, 553216, 553217, 553218.	Granted	Ontario, Canada	20%
Seymour Lake	102009, 103639, 108167, 109882, 109883, 109884, 110535, 110794, 110795, 110796, 111208, 111240, 111512, 112597, 114199, 114200, 115999, 116000, 116001, 118922, 122538, 123189, 125514, 126089, 126090, 128849, 130705, 130706, 132743, 134452, 137057, 137595.	Granted	Ontario, Canada	20%



**ARDIDEN**

Lithium Projects	Tenement Number/Claim ID	Status	Location	Beneficial Percentage Interest
	139233, 140447, 140448, 142382, 142383, 142384, 143993, 144333, 145302, 146398, 147129, 147130, 147644, 147645, 149178, 149204, 150834, 152639, 152695, 154018, 157231, 158455, 158456, 158595, 158701, 158702, 158739, 159350, 161036, 161037, 161227, 161228, 161676, 164044, 164290, 164291, 164672, 165944, 166147, 167316, 167331, 167714, 171277, 174901, 176401, 177615, 182257, 182794, 182795, 182796, 183014, 183611, 183612, 184741, 184742, 186421, 186458, 186459, 186558, 186683, 186849, 186850, 189693, 190097, 190098, 190099, 191608, 192878, 192879, 193064, 193065, 195436, 197307, 197308, 199575, 199576, 201118, 201239, 202392, 202393, 202394, 204013, 206643, 209206, 209207, 209269, 210717, 211639, 212521, 213762, 213972, 216046, 216480, 219380, 219487, 224207, 224208, 226787, 226788, 228166, 230975, 230976, 232543, 232544, 233869, 233870, 233871, 234515, 234658, 237862, 238118, 238343, 239069, 239142, 239197, 244708, 246792, 247152, 247930, 247931, 250469, 252479, 252530, 252702, 252703, 252704, 252705, 255760, 256854, 257033, 257034, 257911, 259408, 259409, 261948, 264527, 264569, 264570, 265918, 268004, 269391, 270371, 270372, 271256, 271302, 271759, 275234, 277335, 278196, 278197, 280559, 280560, 280561, 282491, 282661, 282662, 285387, 289913, 289914, 290555, 290713, 292949, 293546, 297013, 302513, 304354, 305606, 306092, 306359, 306504, 307057, 312238, 312405, 312772, 312773, 312836, 313281, 313660, 313661, 313805, 313806, 313807, 313967, 316941, 317425, 318517, 322021, 325851, 326498, 326802, 327346, 327347, 328430, 329159, 329160, 331205, 331233, 332326, 332327, 336637, 337814, 337815, 338554, 339017, 339018, 341504, 341621, 342142, 342143, 343145, 343146, 343147, 343884, 344314, 344315, 518640, 518646, 518652, 518659, 518660, 518666, 518667, 518668, 518673, 518674, 518675, 518676, 518680, 518681, 518682, 518683, 518685, 518686.			
Wisa Lake	103529, 103846, 113513, 118618, 118619, 118801, 118802, 119131, 119132, 119133, 129848, 131136, 133592, 145905, 150259, 157769, 159951, 161045, 164373, 167103, 176985, 176986, 177777, 177778, 177779, 178817, 183797, 193276, 193277, 195845, 198377, 212601, 212614, 213853, 213854, 215841, 215842, 215843, 223146, 224167, 224168, 230802, 231115, 231116, 231808, 234393, 243004, 243329, 244999, 246563, 246564, 250542, 252720, 253045, 253046, 262540, 269309, 269310, 271771, 271772, 281855, 281856, 282740, 282741, 289548, 297767, 301603, 307936, 308449, 308450, 317062, 327963, 329248, 329645, 338625, 338787, 635731, 635732, 635733, 635734, 635735, 635736, 635737, 635738, 635739, 635740, 635741, 635742.	Granted	Ontario, Canada	20%
Root Lake Patents	MLO-13011, MLO-13014, MLO-13016, PAT-51965, PAT-51966, PAT-51967, PAT-51968, PAT-51969, PAT-51970, PAT-51971, PAT-51972, PAT-51973, PAT-51974, PAT-51975, PAT-51976, PAT-51977, PAT-51978, PAT-51979, PAT-51980, PAT-51981, PAT-51982, PAT-51983, PAT-51984, PAT-51985, PAT-51986, PAT-51987, PAT-51988, PAT-51989, PAT-51990, PAT-51991, PAT-51992, PAT-51993, PAT-51994, PAT-51995, PAT-51996, PAT-51997.	Granted	Ontario, Canada	20%

Graphite Projects	Tenement Number/Claim ID	Status	Location	Beneficial Percentage Interest
Manitouwadge	106808, 109041, 110086, 113625, 113626, 118723, 120303, 128662, 131666, 131972, 134369, 148355, 148356, 148357, 151037, 160975, 162102, 162103, 177448, 178748, 178749, 184310, 185993, 185994,	Granted	Ontario, Canada	100%



**ARDIDEN**

206507, 206508, 213679, 214769, 215274, 216286, 233311, 233312, 233313, 242045, 245488, 246007, 248870, 251308, 251595, 251596, 251597, 251598, 252658, 252659, 254326, 262718, 265818, 265819, 265820, 270688, 270689, 270690, 271714, 271715, 271716, 271717, 271718, 271719, 280111, 280112, 281804, 281805, 289867, 298697, 299651, 300011, 302379, 302380, 302381, 317648, 317649, 317650, 317651, 318725, 329071, 330634, 330635, 332614, 338507, 338508, 338509.			
--	--	--	--



**ARDIDEN**

**2. Mining tenements acquired during the quarter and their location:**

Project	Tenement Number	Status	Location	Comment
Pickle Lake - Kasagiminnis North	742484, 742485, 742486, 742487, 742488, 742489, 742490, 742491, 742492, 742493, 742493, 742494, 742495, 742496, 742497, 742498.	Granted	Ontario, Canada	100%

**3. Mining tenements disposed of during the quarter and their location:**

Project	Tenement Number	Status	Location	Comment
		Granted	Ontario, Canada	