

MIRAMAR
RESOURCES LTD.

Miramar Resources Ltd

“Creating shareholder value through discovery”

SOUTH-WEST CONNECT

19-21 OCTOBER 2022

ASX: M2R

Disclaimer/Competent Person Statement

Forward-Looking Statements

Statements in this presentation which are not statements of historical facts, including but not limited to those relating to the proposed transactions, are forward-looking statements. These statements instead represent management's current expectations, estimates and projections regarding future events.

Although management believes the expectations reflected in such forward-looking statements are reasonable, forward-looking statements are based on the opinions, assumptions and estimates of management at the date the statements are made and are subject to a variety of risks and uncertainties and other factors that could cause actual events or results to differ materially from those projected in the forward-looking statements. Accordingly, investors are cautioned not to place undue reliance on such statements.

Competent Person Statement

The information in this report that relates to Exploration Targets or Exploration Results is based on information compiled by Allan Kelly, a “Competent Person” who is a Member of The Australian Institute of Geoscientists. Allan Kelly is the Executive Chairman of Miramar Resources Ltd. He is a full-time employee of Miramar Resources Ltd and holds shares and options in the company.

Allan Kelly has sufficient experience that is relevant to the style of mineralisation and type of deposits under consideration and to the activity being undertaken to Qualify as a “Competent Person” as defined in the 2012 Edition of the ‘Australasian Code for Reporting of Exploration Results, Mineral Resources and Ore Reserves’. Allan Kelly consents to the inclusion in this presentation of the matters based on his information and in the form and context in which it appears.

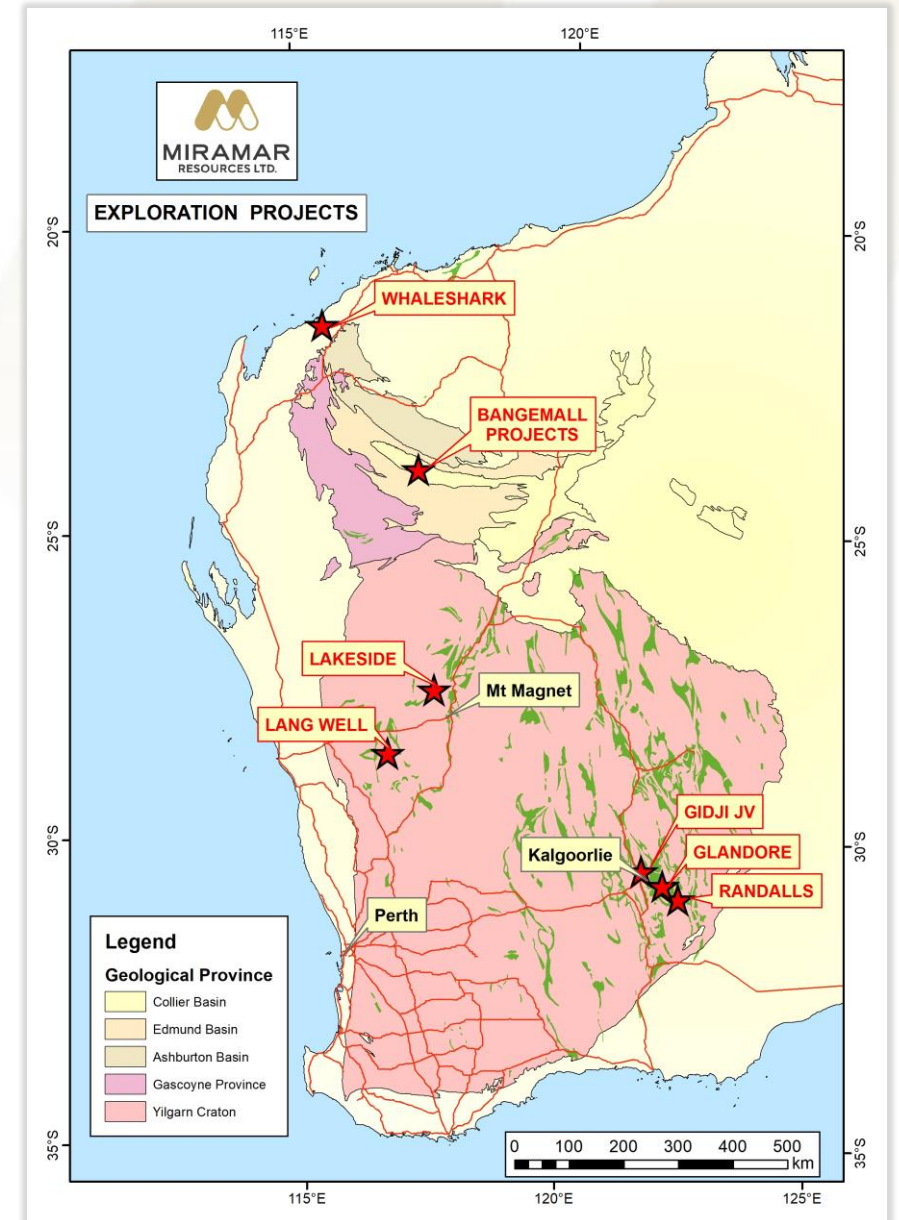
Information on historical results for all projects within this presentation, including JORC Table 1 and 2 Information, is included in the Miramar Resources Limited Prospectus dated 4 September 2020.

JORC Table 1 and 2 Information for Miramar results for all projects within this presentation are included in the relevant ASX releases.

Investment Highlights

Active WA-focused exploration company

- High-grade gold results from recent **Glandore** drilling
- Uncovering a potential new gold camp at **Gidji JV**
- Large IOCG targets at **Whaleshark**
- Additional upside from **Bangemall**, **Lang Well** and **Randalls** projects
- **Board track record** of discovery, development and production
- **Regular news flow** from **active exploration** across **multiple projects**
- Tight share register, **low EV**



Corporate Snapshot

ASX Code	M2R
Shares on Issue	70.7M
Listed Options (25c)	28.0M
Market Capitalisation (@ 10c)	\$7.1M
Cash/Investments (30 Jun 22)	~\$3.4M
Enterprise Value	\$3.7M

Substantial Shareholders	%
XGS Pty Ltd (Allan Kelly)	9.9
Faraday Nominees Pty Ltd	9.3
Top 20 Holders	42.5
Board	10.8

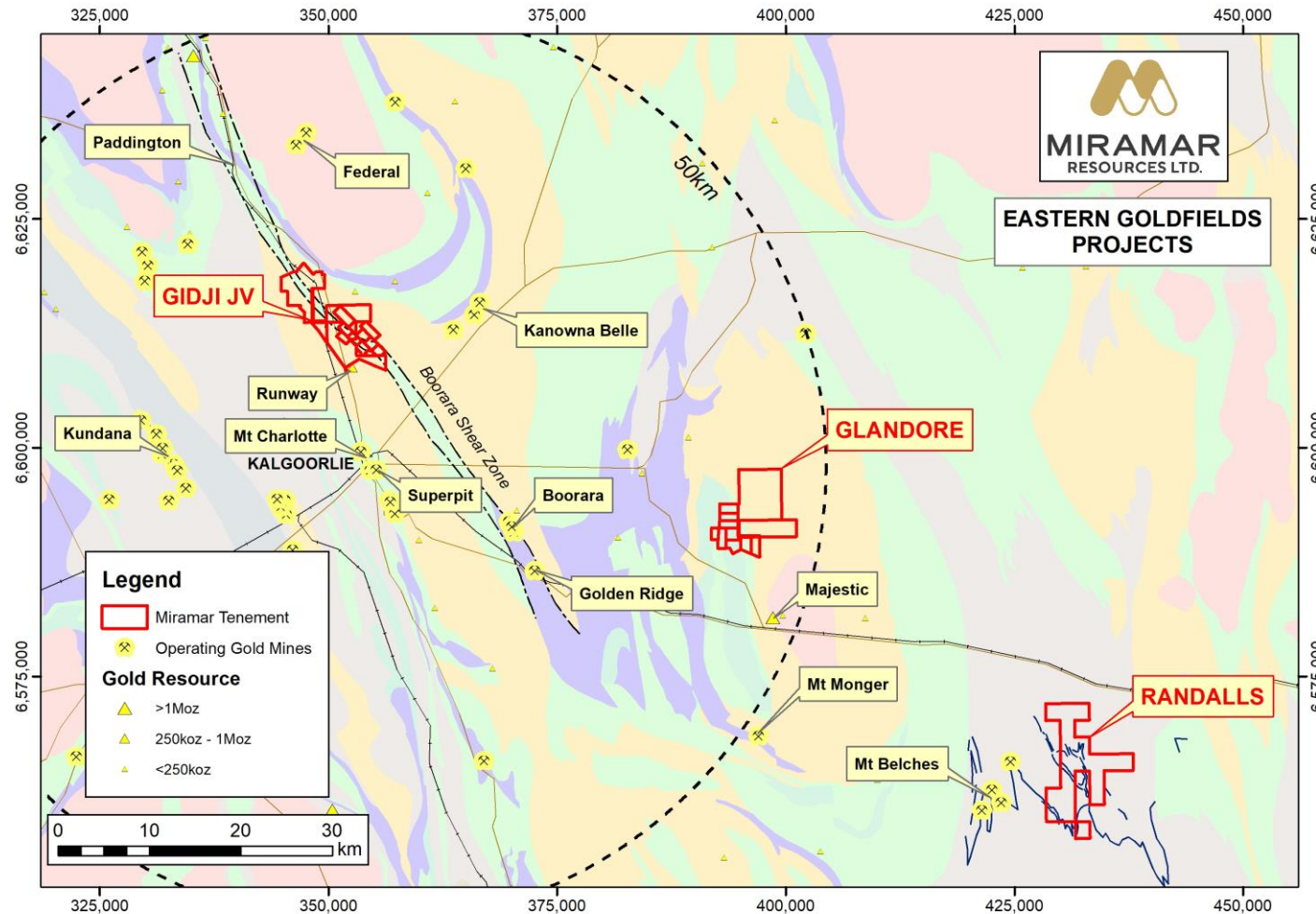
Experienced Board – with track record of successful discovery, development and production

Allan Kelly (Exec. Chairman)	<ul style="list-style-type: none"> • Geologist/Geochemist/Manager • 30 years experience in mineral exploration, development and gold production • Founding MD, Doray Minerals Ltd (2009-2016) • AMEC “Prospector” Award – 2014
Marion Bush (Technical Director)	<ul style="list-style-type: none"> • Geologist/Analyst/Manager • 25+ years experience in exploration, management, directorship and marketing
Terry Gadenne (Non-Exec. Director)	<ul style="list-style-type: none"> • Rescue helicopter pilot and former Army and Navy Officer • 25+ years experience in the defence forces, aviation, agriculture and mining services
Mindy Ku (Co. Sec/CFO)	<ul style="list-style-type: none"> • 15+ years experience with public and private companies

Eastern Goldfields Projects

Strategic land position in world-class gold province

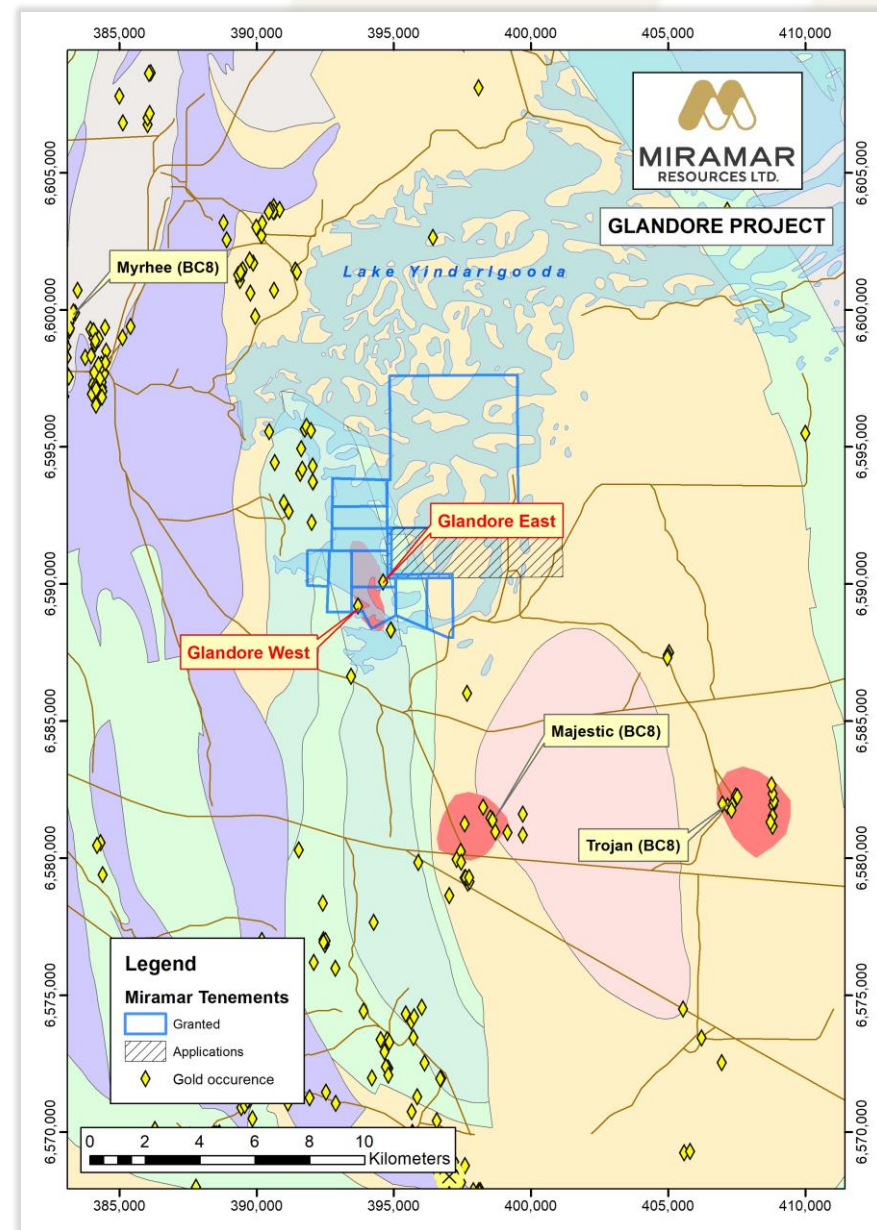
- Three underexplored projects close to Kalgoorlie-Boulder
- Year-round access
- Proximity to multiple gold mining/processing operations



Glandore

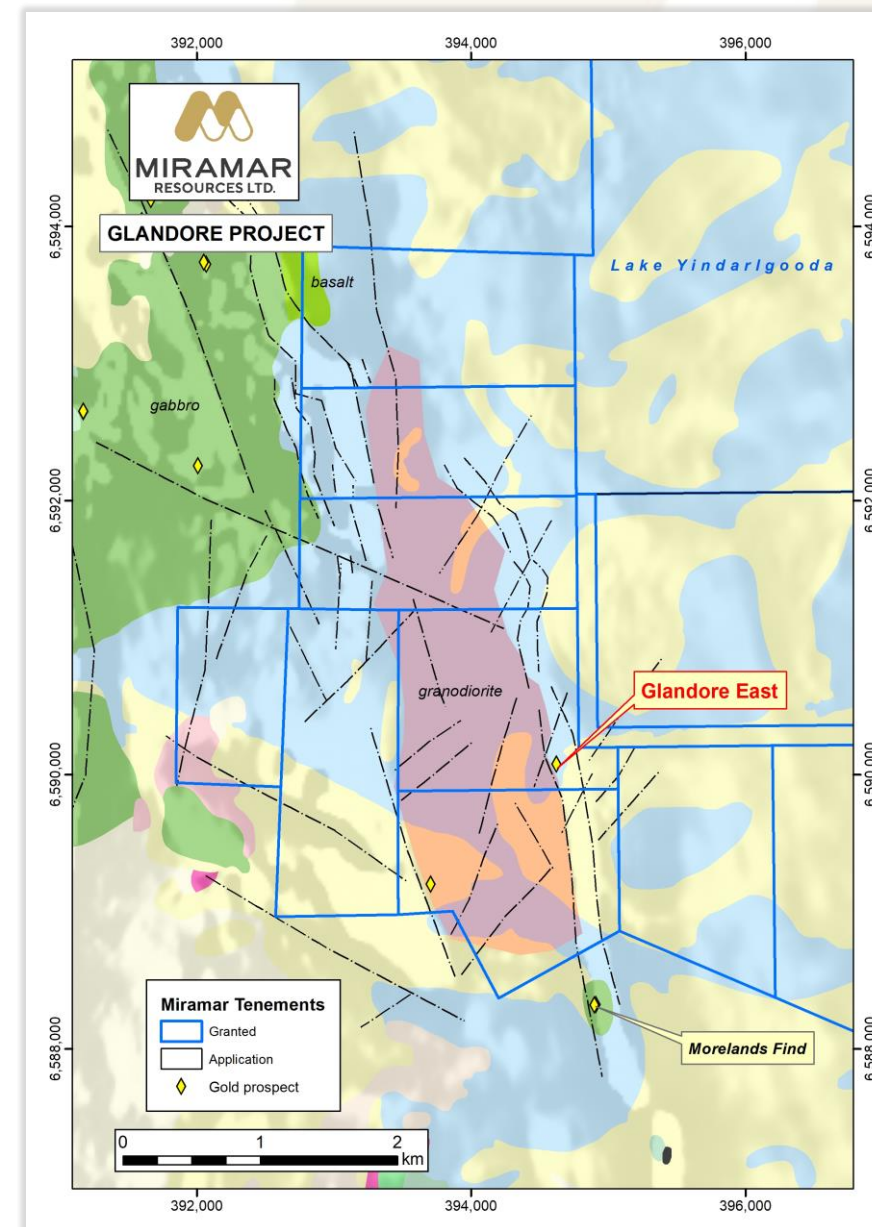
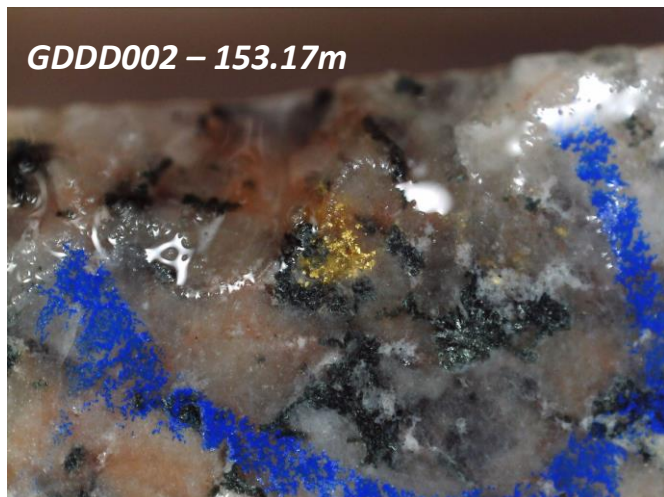


- 40km E of Kalgoorlie
- **Underexplored** - covered by salt lake
- Close to existing /proposed gold processing infrastructure
- Similar geology/structure to **Majestic**, **Imperial** and **Trojan** gold deposits



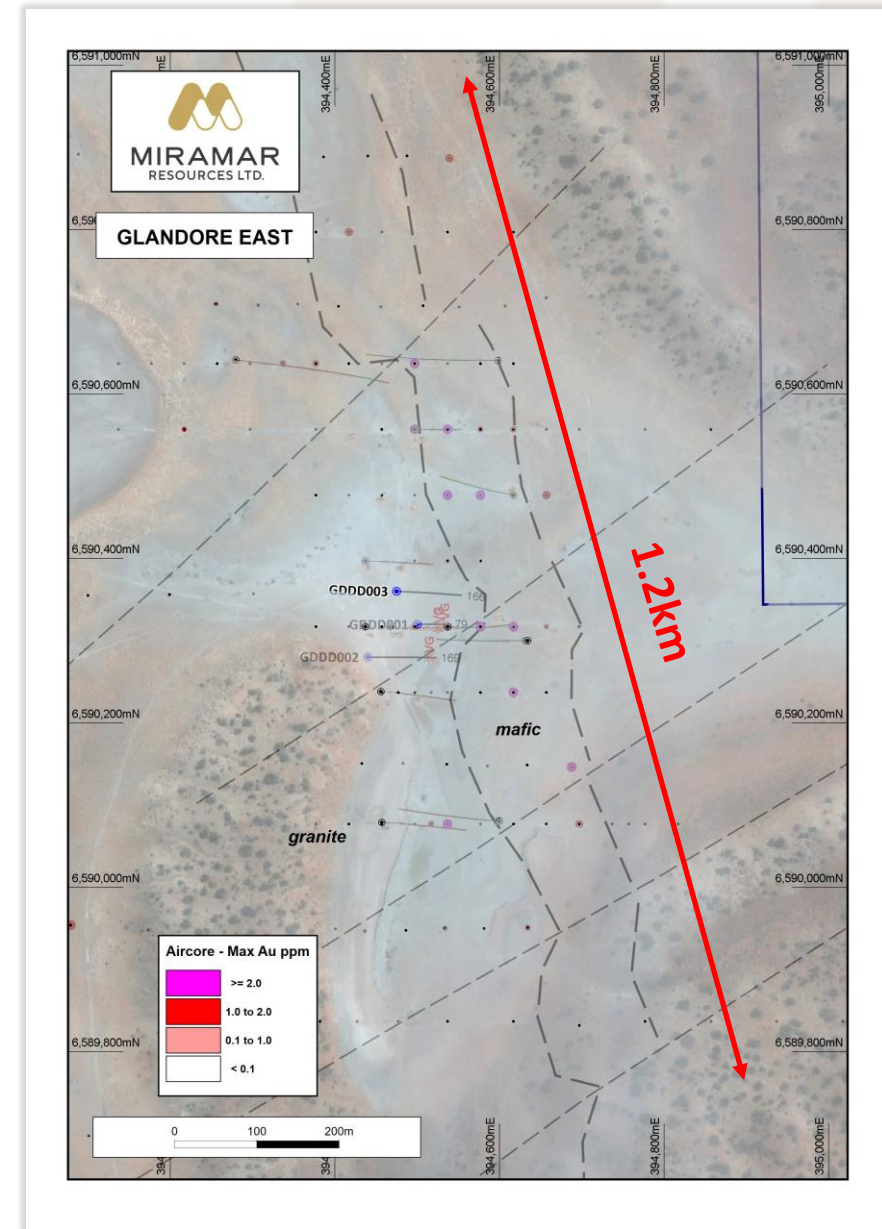
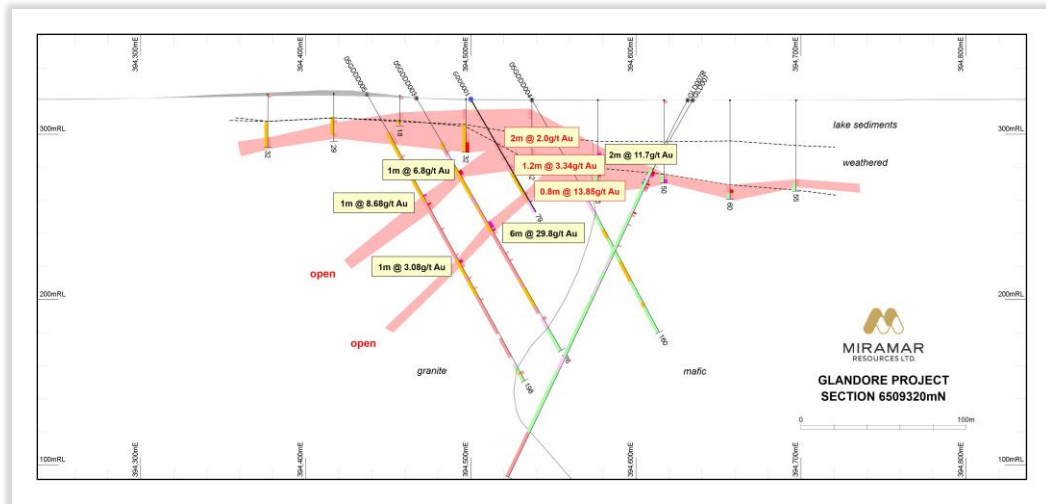
Glandore

- Layered mafic intruded by granodiorite
- Large aircore footprint **>1g/t Au**
- **High-grade gold at Glandore East**
- Detailed UAV magnetic survey completed



Glandore East

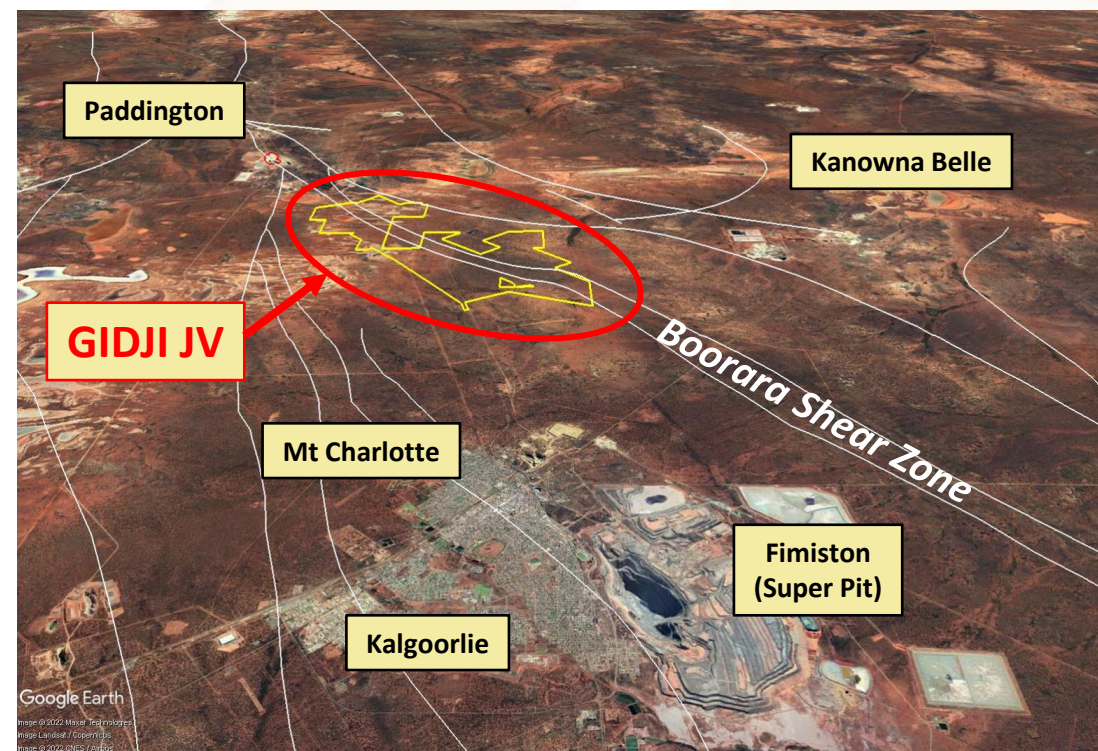
- Large aircore footprint >1g/t Au
- Historic drill results incl. **6m @ 29.8g/t Au**
- **Visible gold** in first two DDH's
 - **GDDD001 - 0.8m @ 13.9g/t Au**
- *Assays pending for two DDH's*
- Significant strike potential – open at depth



Gidji JV – a potential new gold camp

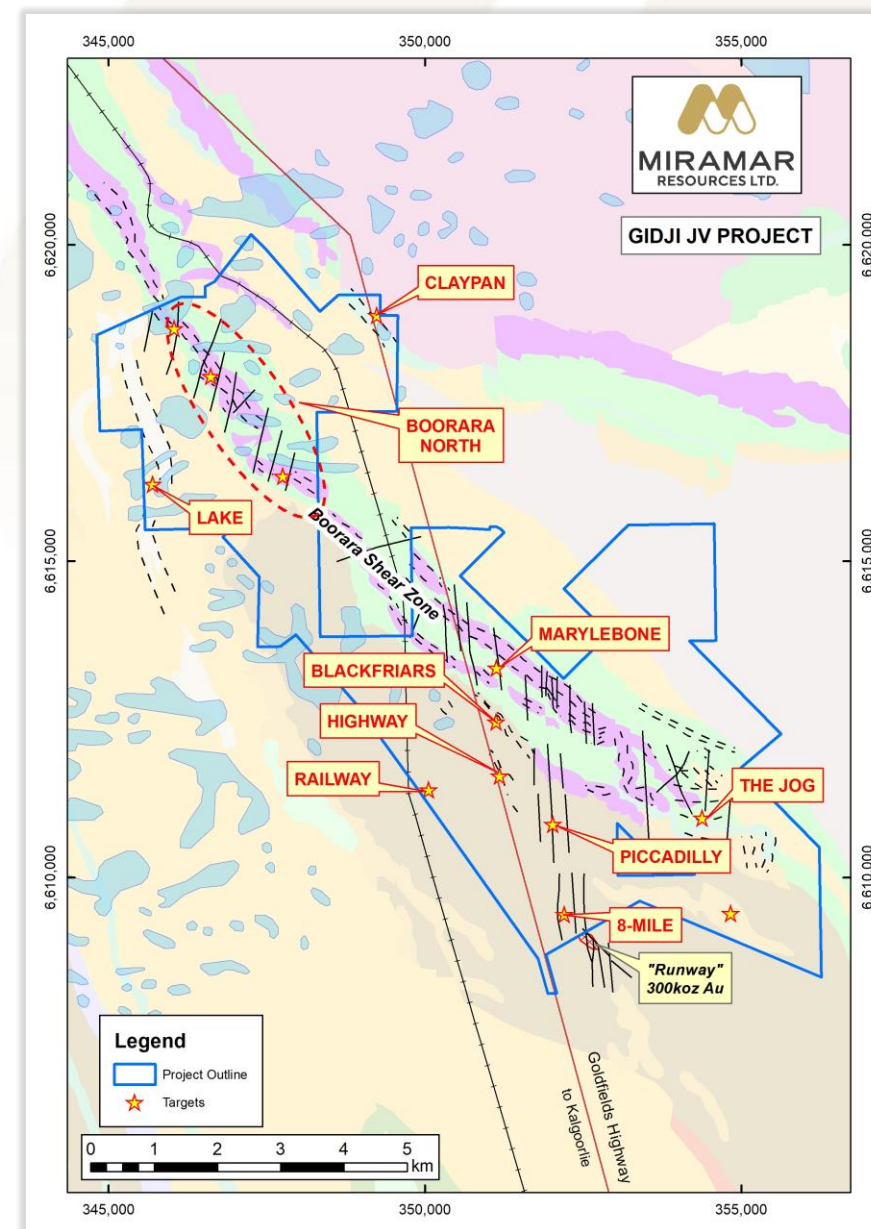
“The cheapest house on the best street”

- Strategic land package **15km N of Kalgoorlie** via major highway
- **15km of major regional structure** along strike from multiple large gold deposits
- Multiple gold processing options nearby
- Nickel sulphide potential



Gidji JV – camp-scale

- Substantial strike length of major mineralised structure – “Boorara Shear Zone”
- **Underexplored** – limited deep drilling
- **Potential for multiple new gold deposits** within different host rocks and/or structural settings
- Multiple systematic aircore, RC and/or DDH programmes completed and planned



Gidji JV

Multiple large gold targets outlined

Marylebone

- **2 x >1.6km long** gold anomalies with multiple high-grade results up to **13g/t Au**

Blackfriars

- **>1.4km long** anomaly at mafic/sediment contact with results up to **11.8g/t Au (EOH)**

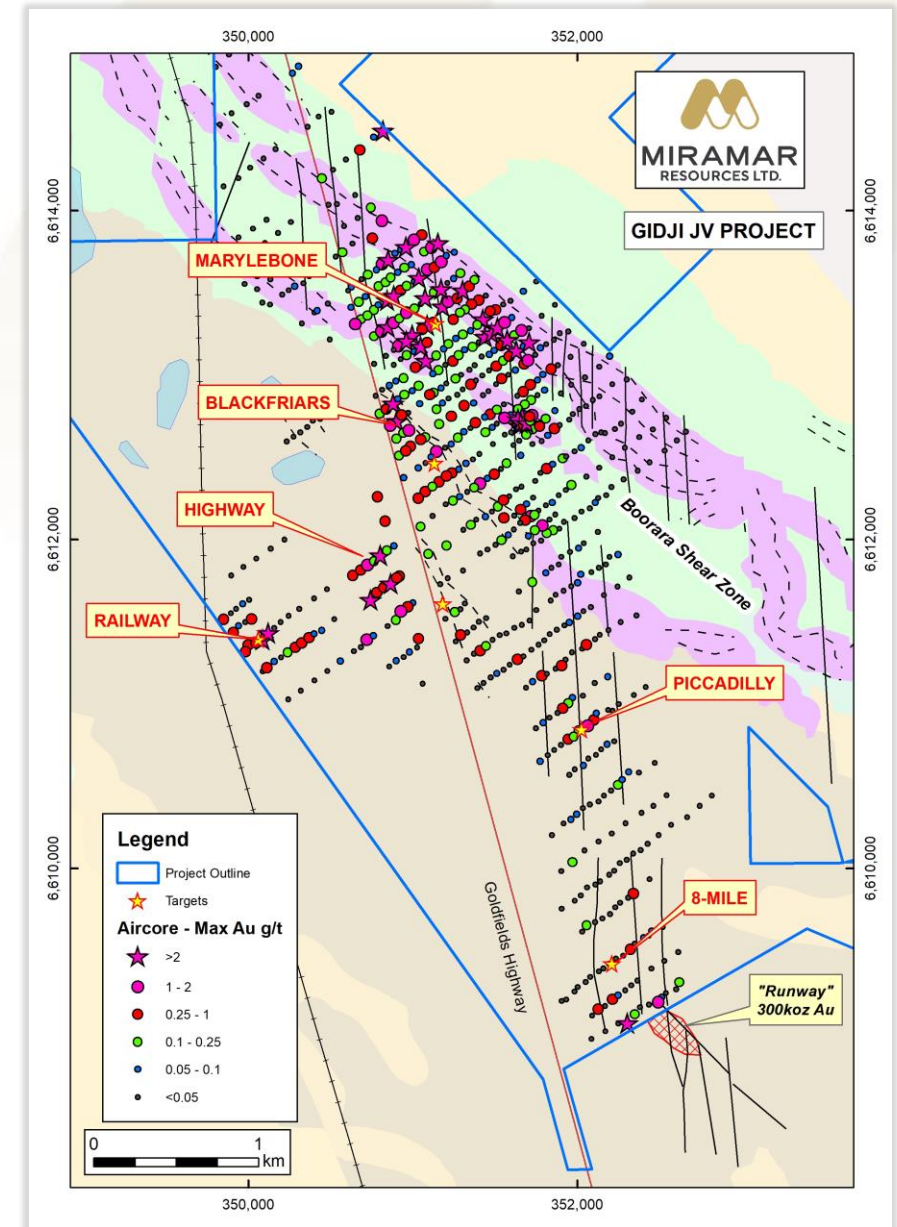
Highway/Piccadilly

- **>1km long** anomaly with **multiple +2g/t results**

Railway

- **High-grade** aircore hits in Black Flag sediments

Minimal deep drilling to date



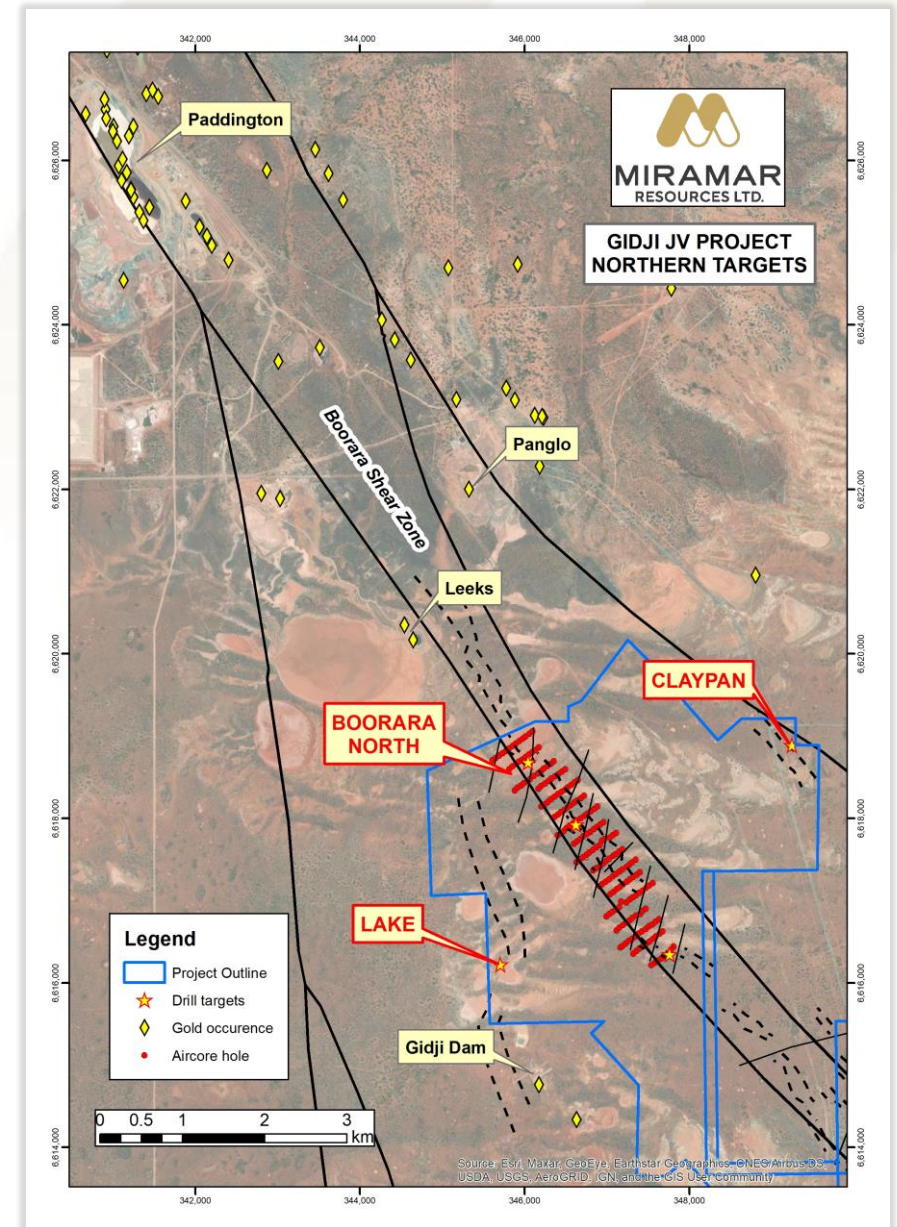
Gidji JV - North targets

Boorara North

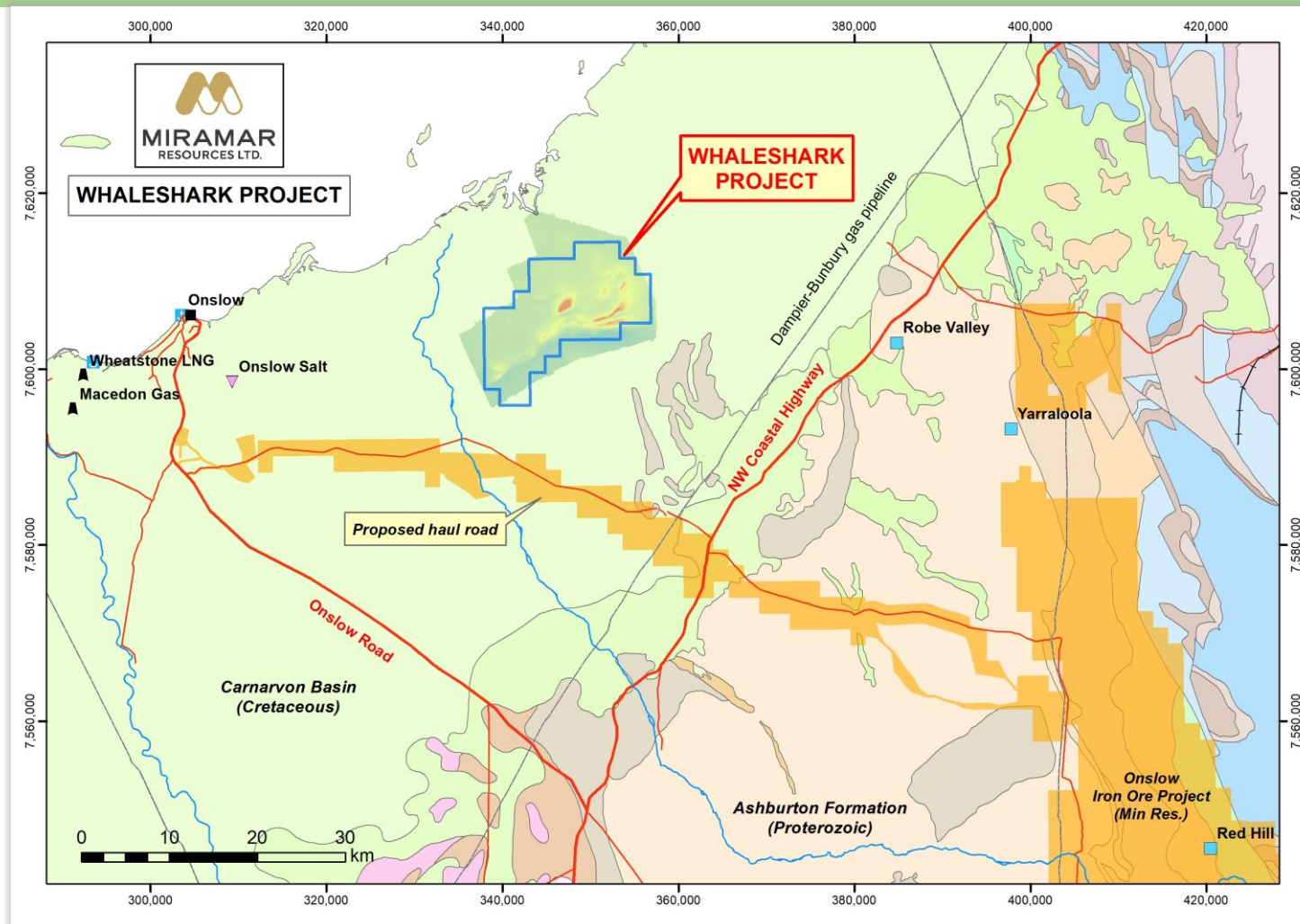
- 4km underexplored segment of Boorara Shear Zone
- Sporadic historic drilling
- *Awaiting assays from recent aircore programme*

Lake

- Significant historic RC drill results in structural jog and demagnetised zone
- Open down dip and along strike
- Historic open pit gold operation along strike
- RC drilling planned following approvals



Whaleshark Cu-Au Project

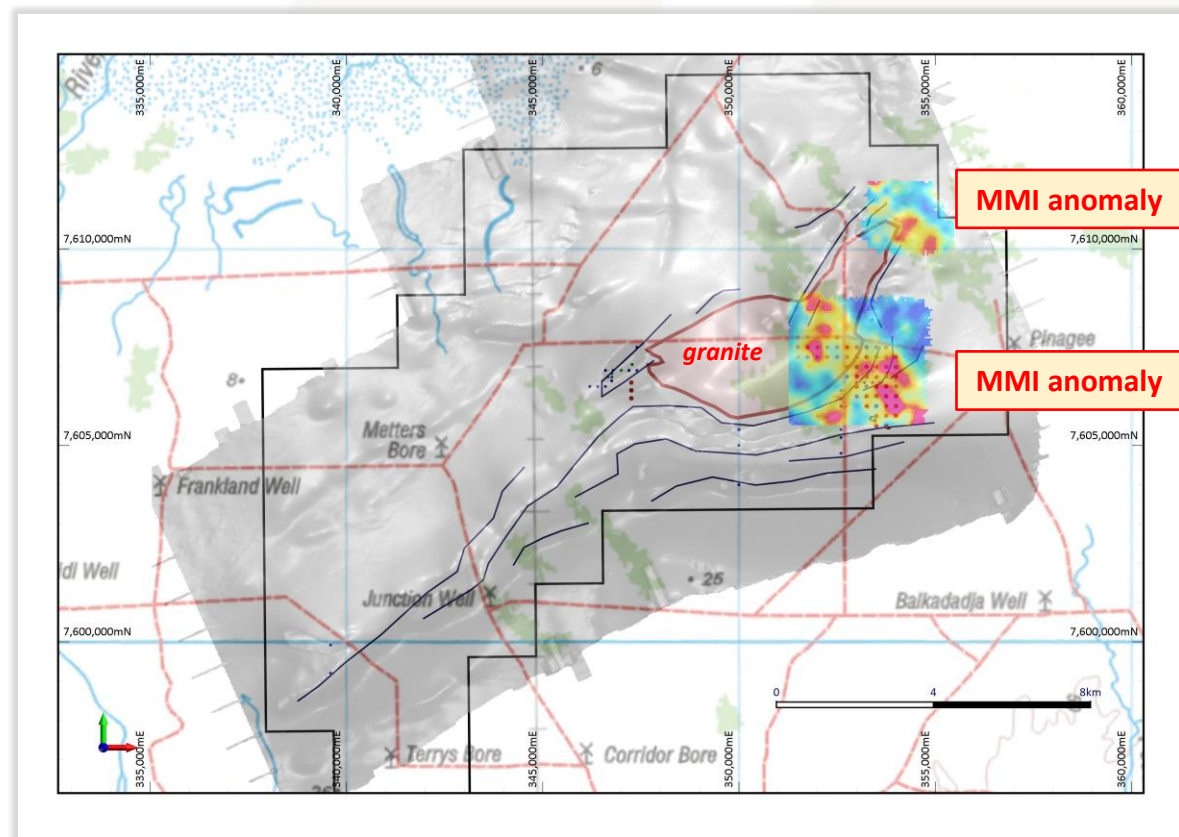


- 40km east of Onslow
- Proterozoic BIF and granite under Carnarvon Basin sediments
- Proximity to major infrastructure

Whaleshark Cu-Au Project



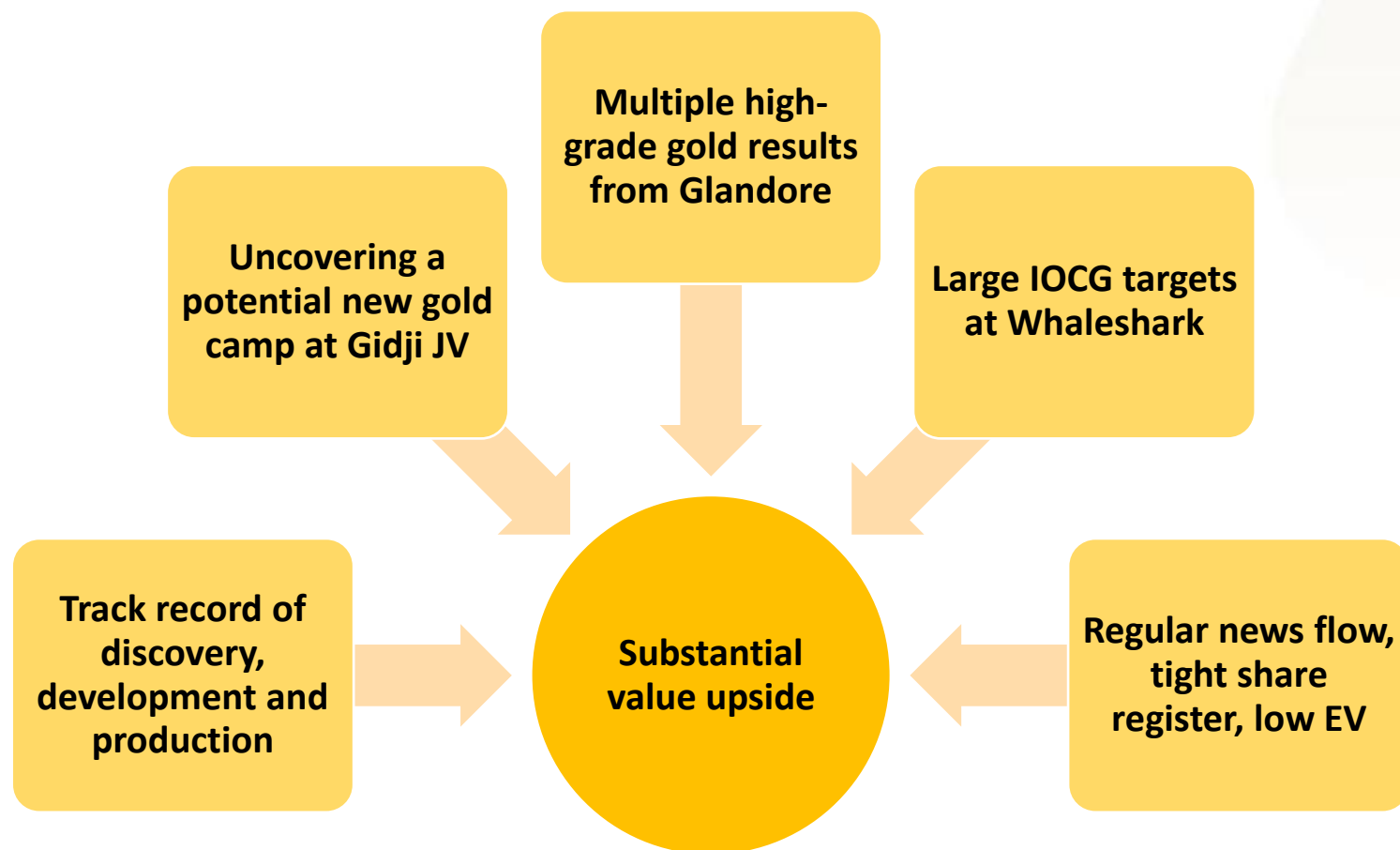
- Large **Cu-Ag-U-REE** MMI soil anomalies on edge of Proterozoic granite
- Depth to basement mostly <100m
- *Aircore assays pending*

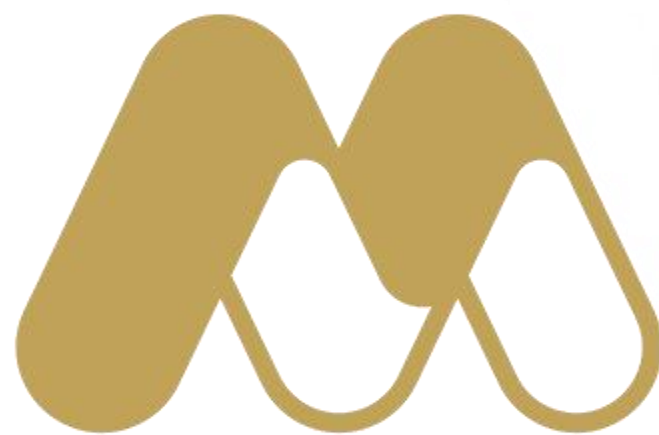


Target pipeline provides substantial upside

Project	Applications	Target Generation	Aircore Drilling	Bedrock Testing
GLANDORE			GLANDORE EAST	
			Island Glandore West	
GIDJI JV				MARYLEBONE 8-Mile Lake The Jog
			Blackfriars Railway Piccadilly	
		Claypan	Highway Boorara North	
WHALESHARK		IOCG targets		
BANGEMALL	Blue Bar	Dooley Downs Mt Vernon		
RANDALLS			BIF targets	
LANG WELL		Au/REE targets		

Summary





miramarresources.com.au | ASX: **M2R**

Appendices

Additional Discovery Opportunities

■ Bangemall

- Ni-Cu-PGE's
- REE's
- Uranium
- Diamonds

■ Randalls

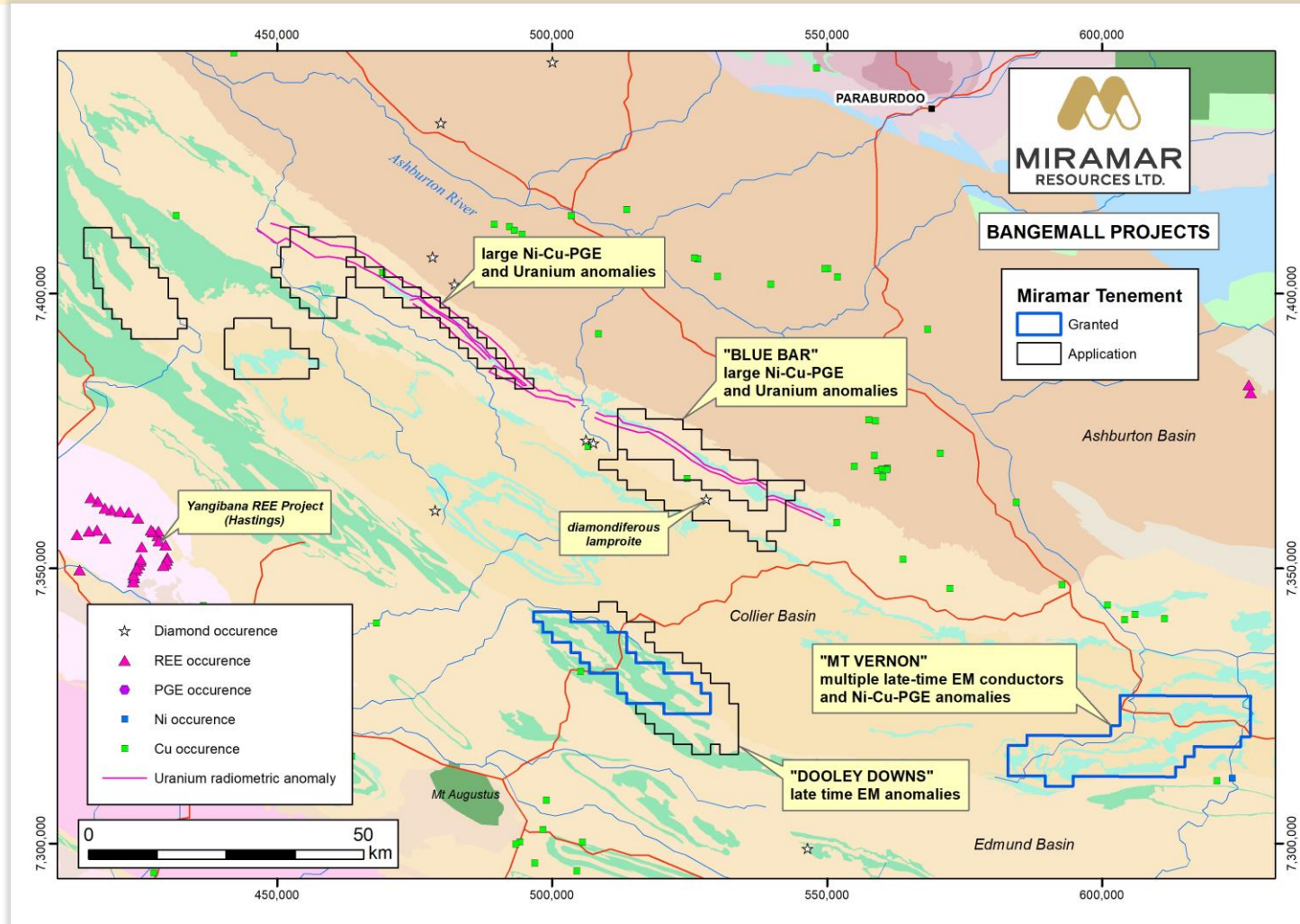
- BIF-hosted Au

■ Lang Well

- Au
- REE's



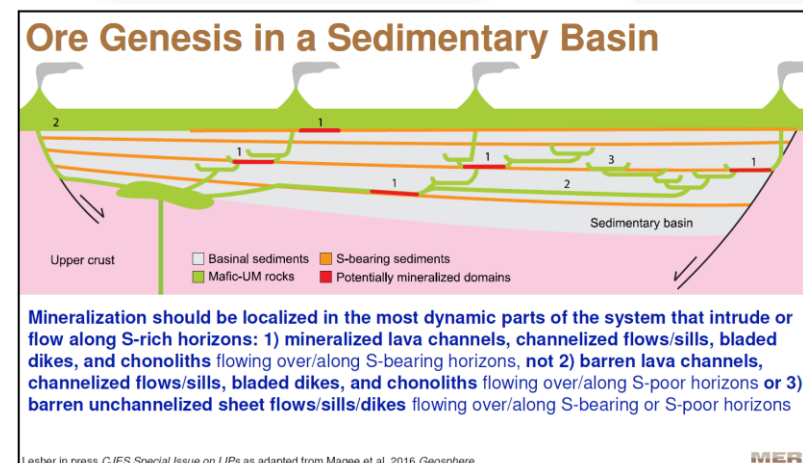
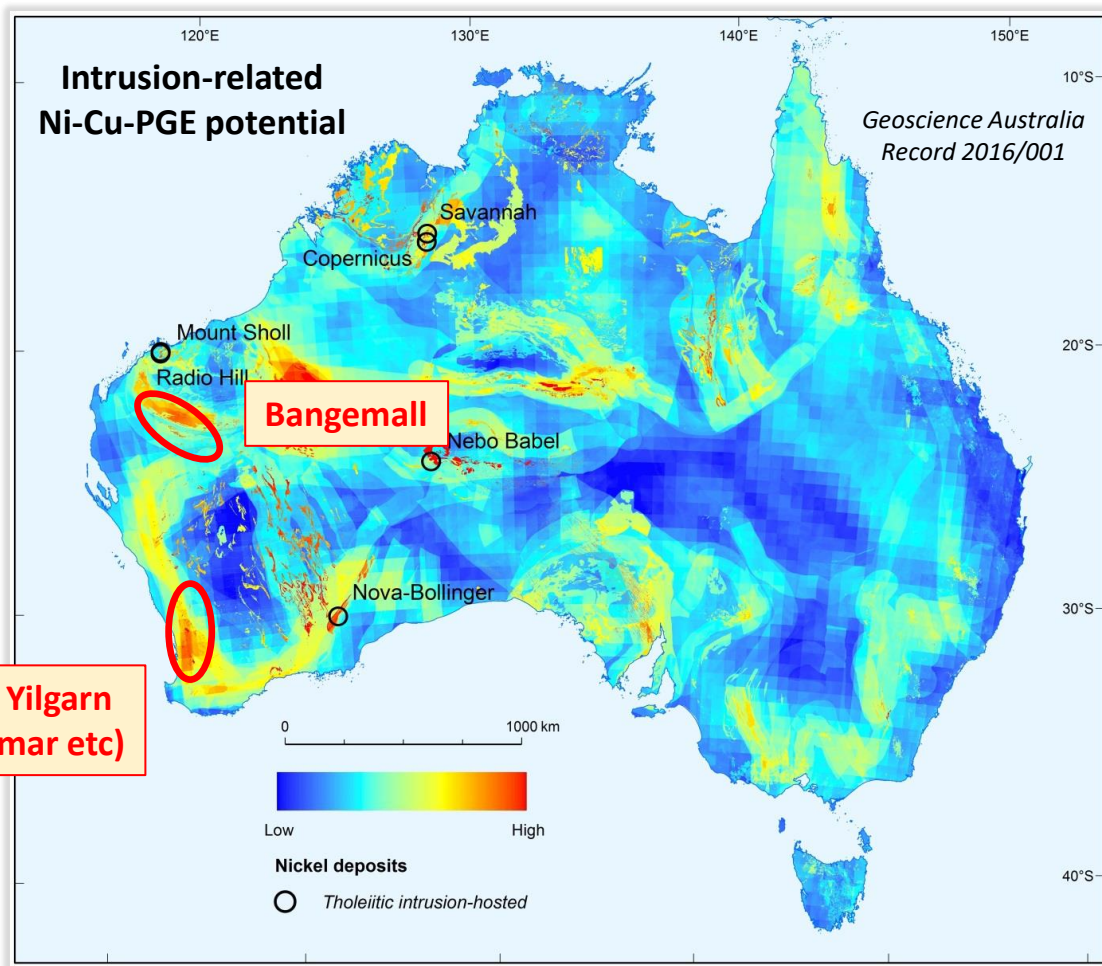
Bangemall Projects



Strategic position in emerging mineral province

- Crustal-scale faults
- Prot. dolerite sills – same age as West Musgraves
- **Ni-Cu-PGE** stream sed/soil anomalies
- Multiple EM conductors identified at **Mt Vernon**
- **Diamondiferous lamproite** at **Blue Bar**
- Large **U** anomalies

Bangemall - Ni-Cu-PGE potential

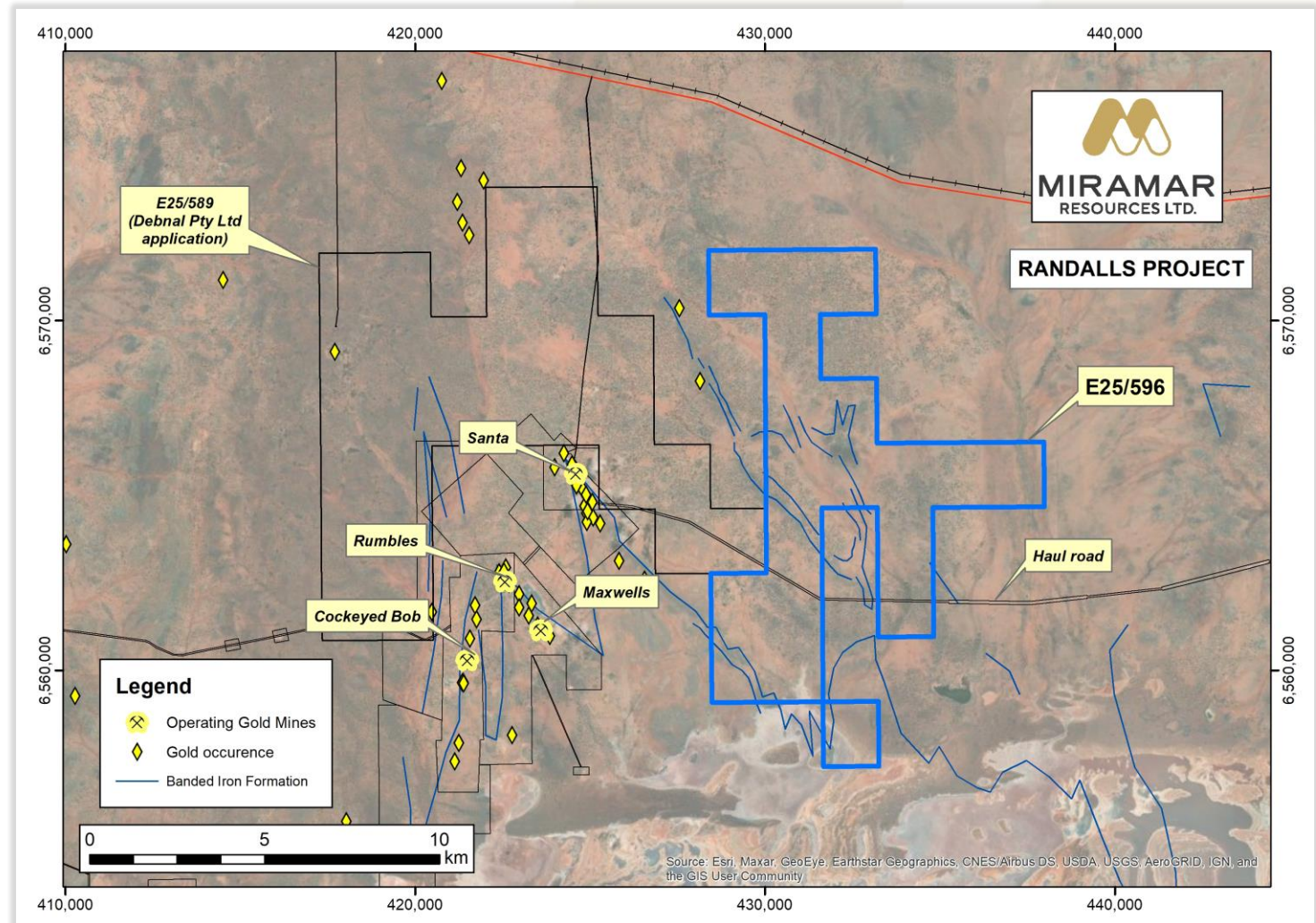


Leshner, 2019



Randalls

- 70km E of Kalgoorlie
- Adjacent to high-grade gold mines and haul road
- High-grade rock chips along strike
- Poorly tested folded BIF
- ***Aircore assays pending***



Lang Well

- Underexplored greenstone belt between Deflector and Rothsay gold deposits
- Multiple large untested auger anomalies
 - **Au**
 - **REE (Samarium)**
- Multiple potential pegmatites identified from regional radiometric data
- Shallow (clay-hosted) REE mineralisation in historic aircore drilling
 - **4m @ 1500ppm TREO**

