

26 October 2022

September 2022

Quarterly Activities Report and 5B Cashflow

Highlights

- **Drilling Continues at Mavis Lake Lithium Project:**
 - Over 7,200 drill meters completed during the quarter
 - Exceptional results received including:
Drill hole MF22-116 – 24.1m @ 1.62% Li₂O, 8.15m @ 1.70% Li₂O (including 1m @ 4.32% Li₂O) and 8.7m @ 2.18% Li₂O
Drill hole MF22-117 – 23.9m @ 1.55% Li₂O (including 3.8m @ 3.09% Li₂O)
 - Program extending into the Canadian winter providing opportunities to test for mineralization at depth and extend the known strike length
- **Drilling Continued at Halls Peak Base Metal Project:**
 - Multiple holes at Gibsons' intersected mineralized zones
 - Drilling commenced at Sunnyside with the program completed in early October
- **Licenses renewed at Sohar Copper Project**
- **Appointment of Experienced Lithium Executive as Managing Director**

Critical Resources Limited (**ASX:CRR**) ("Critical Resources" or "the Company") is pleased to report on its activities for the quarter ended 30 September 2022.

Operational Activities

Mavis Lake Lithium Project (100%) – Ontario, Canada

During the quarter, Critical Resources completed a further 7,235 drilling meters of diamond core drilling at the Mavis Lake Lithium Project. The drill meters came from 52 individual drill holes, and sought to confirm and extend the strike length to the east of the main zone. Exploration results



were reported throughout the period, with the Company announcing the highest grade lithium intercepts in the Project's history, with grades up 4.32% Li₂O¹.

Key, high-grade intercepts verified by assay for the period can be seen in table 1, for full details refer to ASX Announcements 21 July 2022, 17 August 2022, 13 September 2022 and 28 September 2022.

Table 1. Significant Assay Results for September 2022 Quarter

Drill Hole	Depth From (m)	Interval (m)	Li ₂ O (%)	Including
MF22-65	126.41	6.22	1.13	
MF22-66	99.58	6.86	0.73	5.4m @ 0.91% Li ₂ O
MF22-69	100.97	4.88	0.37	
MF22-71	110.52	8.73	1.07	
MF22-72	142.26	23.11	1.34	
MF22-73	143.27	17.47	0.79	6.99m @ 1.15% Li ₂ O
MF22-74	131.86	5.14	0.47	
MF22-75	30.5	8.45	0.69	1.83m @ 2.15% Li ₂ O
MF22-77	53.46	1.89	0.58	
MF22-78	114.12	4.54	0.91	3.08m @ 1.3% Li ₂ O
MF22-80	146.75	9.8	0.8	5.65m @ 1.08% Li ₂ O
MF22-81	146	14.7	1.09	1.5m @ 3.36% Li ₂ O
MF22-82	163	13.2	1.3	1.54m @ 2.09% Li ₂ O
MF22-83	122.05	6.7	0.65	3.9m @ 1.02% Li ₂ O
MF22-84	115.05	5.35	1.03	1.2m @ 2.67% Li ₂ O
MF22-85	148.15	15	1.19	3.8m @ 3.57% Li ₂ O
MF22-86	116.7	9.4	1.37	7.25m @ 1.75% Li ₂ O
MF22-88	47.6	2.75	0.75	
MF22-89	49.1	1.45	1.75	
and	51.35	0.75	1.62	
MF22-116	53	24.1	1.62	8.45m @ 1.88% Li ₂ O
and	89	8.15	1.7	1m @ 4.32% Li ₂ O
and	112.75	8.7	2.18	
MF22-117	126.1	23.9	1.55	3.8m @ 3.09% Li ₂ O

Drill holes MF22-116, MF22-117 and MF22-121² provided additional confidence to the Company that the potential exists for Mavis Lake to deliver a maiden JORC 2012 compliant mineral resource estimate. Resource modelling work commenced subsequent to the quarter end.

¹ MF22-116 – refer to ASX Announcement 13 September 2022

² MF22-121 assays released subsequent to the end of the quarter.



At the end of the quarter drilling continues at Mavis Lake, with drillers currently approved to drill up to a total of 15,000 meters. The Company has been developing an extensive future drill program and has permits either approved or under application to allow for comprehensive drilling programs both to the south and the north east of the main zone.

Current and planned (both approved and pending approval) drill collars can be seen in figure 1. The Company approaches these extension areas with high confidence due to the extensive number of mapped, spodumene-bearing outcrops at surface.

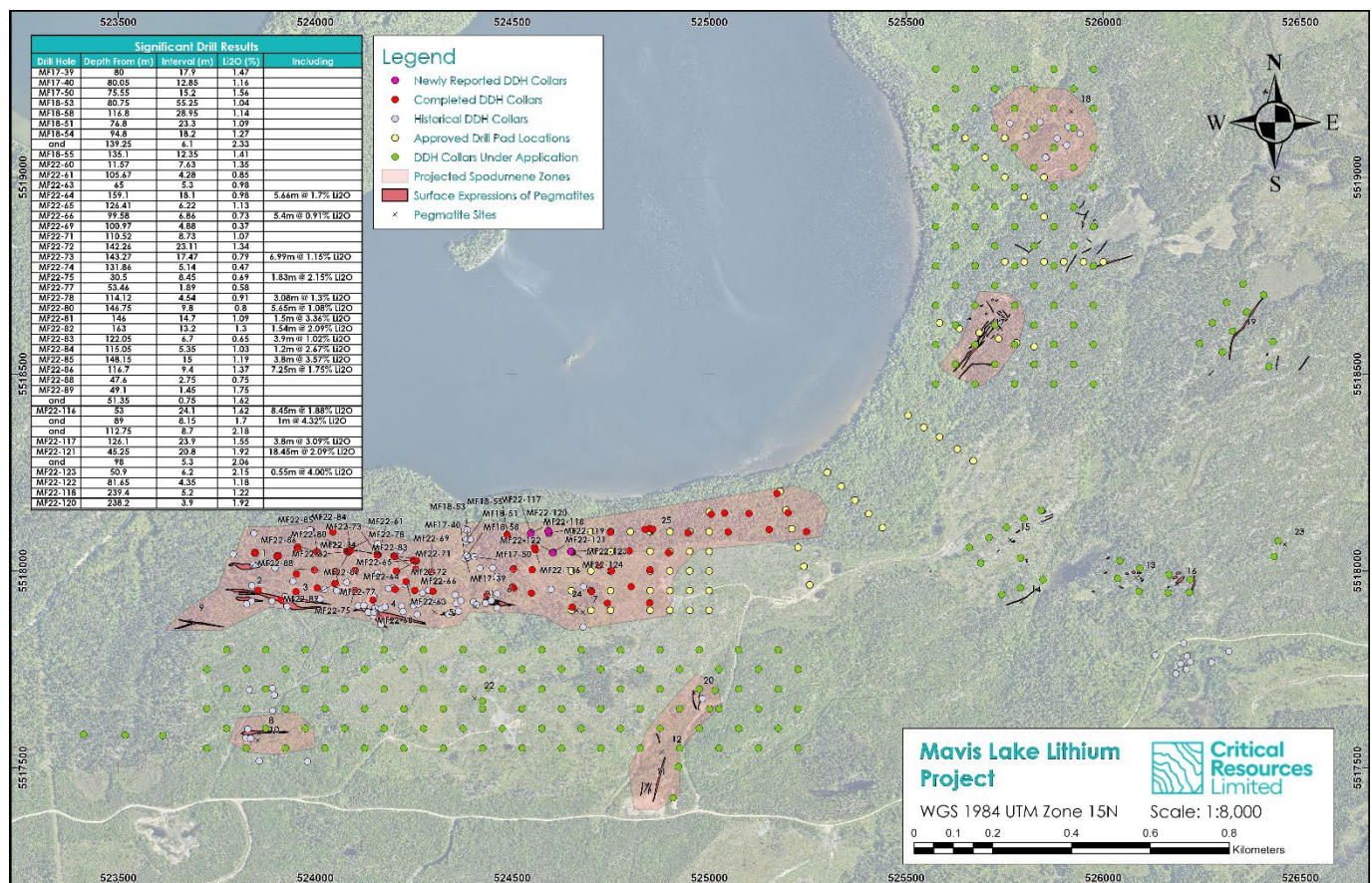


Figure 1. Plan map of completed and proposed future drill collar locations.

Graphic Lake Lithium Project (100%) – Ontario, Canada

During the period, a four-week long field program at the Graphic Lake Lithium Project, consisting of biogeochemical and litho-geochemical sampling was completed. Figure 2 outlines the biogeochemical locations and pegmatite outcrops which were a focus of the program.

The grassroots work will be used to support the identification of prospective lithium-bearing targets for follow up early stage field exploration in 2023. All samples were submitted to an independent laboratory at the completion of the program, the Company expects the results from the sampling program to be available in Q4 CY2022.



Plaid and Whiteloon Lake Projects (100%) – Ontario, Canada

Desktop work was conducted to support exploration planning for the 2023 field-work season.

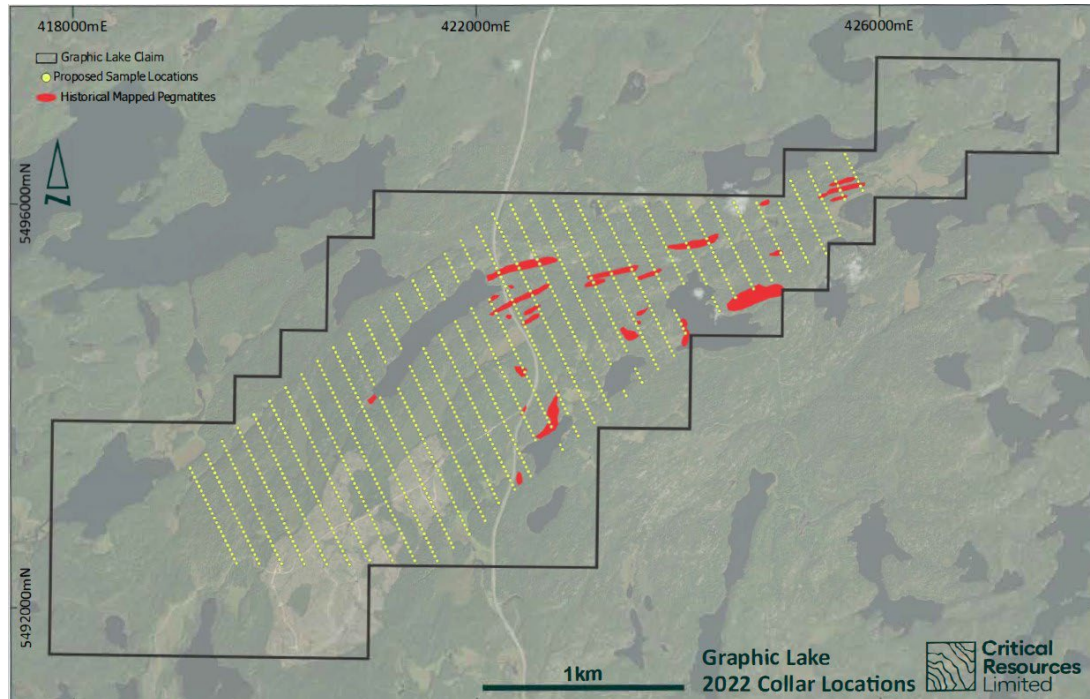


Figure 2. Topographic map of biogeochemical and litho-geochemical survey for Graphic Lake Lithium Project

Halls Peak Project (100%) – New South Wales, Australia

Drilling continued at the Halls Peak Project with diamond core drilling occurring at both the Gibsons and Sunnyside prospects.

Assay results confirmed diamond drill holes 17, 18 and 11B all intersected further zinc, lead, copper and silver-bearing zones of sulphide mineralisation, building on earlier successes (refer to ASX Announcement 1 August 2022).

The strong mineralisation at depth continues to expand the potential of the Halls Peak System – a large mineralised system with numerous widespread high-grade zinc-lead-copper-silver deposits, building on confirmed base metal sulphide mineralisation extending vertically over 300m in the deepest holes drilled.

Subsequent to the quarter end, the drilling program at Halls Peak concluded. Materials and equipment are being demobilised from the exploration site, the Company has sufficient data to commence mineral resource estimation works and will update the market in due course.



Sohar Block 4 and 5 Project – Sultanate of Oman

During the quarter, Block 4 and Block 5 Exploration Licences were extended to 18 June 2023 by the Ministry of Energy and Minerals, Sultanate of Oman. Commercial discussions are continuing with potential partners in-country and are subject to further evaluation.

Schedule of mineral tenements

The Company's tenement and claim schedule can be seen in Appendix 1.

Project Generation

Throughout the quarter the company received a number of new project opportunities and conducted high-level, internal assessments only. The Company will continue to assess any projects that are complimentary to its business.

ESG and Sustainability

The Company engaged consultants to support the development of its ESG and Sustainability plans. Core themes that will guide the Company's efforts centre around First Nations, Communities in which the Company operates and environmental management.

The Company notes that subsequent to the end of the quarter, an introduction meeting was had with Critical Resources Managing Director and leadership members of the Wabigoon Lake Ojibway Nation "WLON" during a site visit. The meeting discussed the project progress to date, general plans for future exploration and the service support and contracts being completed by WLON in support of the Mavis Lake Project.

Finance

Exploration Expenditure

The Company spent over \$3M in exploration activities in Australia and Canada during the period. The Company expects its exploration expenditure to reduce significantly with the cessation of drilling and demobilisation of equipment and personnel from Halls Peak.

The Company held cash and cash equivalents of \$5.53M at 30 September 2022.

Other Disclosure

As disclosed under item 6 in the Appendix 5B, the Company made payments to related parties being for a total consideration of \$138,000. This relates to payments to Non-Executive Directors



undertaking additional duties in support of exploration activities and corporate matters, as well as to the Directors' for normal monthly fees.

Corporate Activity

Director and Management Appointments

During the period, the Company announced the appointment of experienced lithium executive Mr Alex Cheeseman as the Managing Director (commencing 10 October 2022).

Mr John Markovic was appointed as a Non-Executive Director and Mr Harry Spindler as Company Secretary.

Registered Address and Place of Business

The registered address and principal place of business for Critical Resources was moved to Level 50, 108 St Georges Terrace Perth WA 6000.

In addition, the Company established a satellite office in Canada at 338 Red River Road, Thunder Bay, Ontario P7B 1B1.

Capital Structure

The capital structure at the end of the September quarter consisted of:

- 1,490,015,239 shares
- 51,774,479 Options (exercisable at \$0.04, expiring 3 Dec 2024 (total \$2.07 million)
- 3,334,000 Options (exercisable at \$0.025, expiring 3 Nov 2022 (total \$83K)
- 4,00,000 Performance Rights

During the quarter, 2,000,000 shares were issued upon the satisfaction of the Tranche 1 performance rights.

This Announcement has been authorised for release by the Board of Directors

-ends-

For further information contact

Alex Cheeseman

Managing Director

E: info@criticalresources.com.au

P: +61 (08) 9389 4499



ABOUT CRITICAL RESOURCES LIMITED

Critical Resources is advancing and developing critical metals projects for a decarbonized future.

The Company's primary objective is the rapid development of its flagship Mavis Lake Lithium Project, located in Ontario, Canada. Mavis Lake is an advanced exploration project with near-term development potential. Importantly, Critical has an exciting opportunity for further regional growth through exploration at its Graphic Lake, Plaid and Whiteloon prospects, along with expanding its Canadian portfolio through potential increased land holdings and merger and acquisitions.

The Company's other projects include the Halls Peak Project in NSW, Australia, a high-quality base metals project with significant scale potential and the Block 4 and Block 5 copper project, located in Oman.

COMPETENT PERSON STATEMENT

The information in this Announcement that relates to Exploration Results at Halls Peak is based on information compiled by Mr Michael Leu, a Competent Person who is a Member of the Australian Institute of Mining and Metallurgy and the Australian Institute of Geoscientists. Mr Leu is a Director of the Company. Mr Leu has sufficient experience that is relevant to the style of mineralisation and type of deposit under consideration and to the activity being undertaken to qualify as a Competent Person as defined in the 2012 Edition of the "Australasian Code for Reporting of Exploration Results, Mineral Resources and Ore Reserves". Mr Leu consents to the inclusion in this ASX Announcement of the matters based on his information in the form and context in which it appears. This report contains information on Halls Peak extracted from ASX market announcement dated 1 August 2022. The Company confirms that it is not aware of any new information or data that materially affects the information included in the original ASX market announcement.

The information in this Announcement that relates to Exploration Results at Mavis Lake is based on information compiled by Mr Troy Gallik (P. Geo), a Competent Person who is a Member of the Association of Professional Geoscientists of Ontario. Mr Gallik is a full-time employee of the Company. Mr Gallik has sufficient experience that is relevant to the style of mineralisation and type of deposit under consideration and to the activity being undertaken to qualify as a Competent Person as defined in the 2012 Edition of the "Australasian Code for Reporting of Exploration Results, Mineral Resources and Ore Reserves". Mr Gallik consents to the inclusion in this Announcement of the matters based on his information in the form and context in which it appears. This report contains information on Mavis Lake extracted from ASX market announcements dated 21 July 2022, 17 August 2022, 13 September 2022 and 28 September 2022. The Company confirms that it is not aware of any new information or data that materially affects the information included in the original ASX market announcement.

NO NEW INFORMATION

Except where explicitly stated, this announcement contains references to prior exploration results, all of which have been cross-referenced to previous market announcements made by the Company. The Company confirms that it is not aware of any new information or data that materially affects the information included in the relevant market announcements.



Appendix 1 – Schedule of mineral tenements at 30 September 2022

Claim No.	Project / Location	Acquired Interest during quarter	Disposed interest during quarter	Interest at end of Quarter
EL 4474	Halls Peak, NSW	-	-	100%
EL 7679	Halls Peak, NSW	-	-	59.5%
EL 9428	Halls Peak, NSW	-	-	100%
EL 9429	Halls Peak, NSW	-	-	100%
EL 9430	Halls Peak, NSW	-	-	100%
Block 5	Oman	-	-	65%
Block 4	Oman	-	-	51%
686985	Graphic Lake, Canada	-	-	100%
686986	Graphic Lake, Canada	-	-	100%
686987	Graphic Lake, Canada	-	-	100%
686988	Graphic Lake, Canada	-	-	100%
686989	Graphic Lake, Canada	-	-	100%
686990	Graphic Lake, Canada	-	-	100%
659238	Graphic Lake, Canada	-	-	100%
659239	Graphic Lake, Canada	-	-	100%
659240	Graphic Lake, Canada	-	-	100%
659241	Graphic Lake, Canada	-	-	100%
659230	Graphic Lake, Canada	-	-	100%
659231	Graphic Lake, Canada	-	-	100%
659232	Graphic Lake, Canada	-	-	100%
659233	Graphic Lake, Canada	-	-	100%
659234	Graphic Lake, Canada	-	-	100%
659235	Graphic Lake, Canada	-	-	100%
659236	Graphic Lake, Canada	-	-	100%
659237	Graphic Lake, Canada	-	-	100%
659224	Graphic Lake, Canada	-	-	100%
659225	Graphic Lake, Canada	-	-	100%
659226	Graphic Lake, Canada	-	-	100%
659227	Graphic Lake, Canada	-	-	100%
659228	Graphic Lake, Canada	-	-	100%
686991	Graphic Lake, Canada	-	-	100%
686992	Graphic Lake, Canada	-	-	100%
686993	Graphic Lake, Canada	-	-	100%
686994	Graphic Lake, Canada	-	-	100%
686995	Graphic Lake, Canada	-	-	100%
686996	Graphic Lake, Canada	-	-	100%
686997	Graphic Lake, Canada	-	-	100%
686998	Graphic Lake, Canada	-	-	100%
702357	Graphic Lake, Canada	-	-	100%
702358	Graphic Lake, Canada	-	-	100%
702359	Graphic Lake, Canada	-	-	100%
702360	Graphic Lake, Canada	-	-	100%
702361	Graphic Lake, Canada	-	-	100%
702362	Graphic Lake, Canada	-	-	100%
702363	Graphic Lake, Canada	-	-	100%
702364	Graphic Lake, Canada	-	-	100%
702365	Graphic Lake, Canada	-	-	100%



702366	Graphic Lake, Canada	-	-	100%
702367	Graphic Lake, Canada	-	-	100%
702368	Graphic Lake, Canada	-	-	100%
702369	Graphic Lake, Canada	-	-	100%
702370	Graphic Lake, Canada	-	-	100%
702371	Graphic Lake, Canada	-	-	100%
702372	Graphic Lake, Canada	-	-	100%
702373	Graphic Lake, Canada	-	-	100%
702374	Graphic Lake, Canada	-	-	100%
702375	Graphic Lake, Canada	-	-	100%
702376	Graphic Lake, Canada	-	-	100%
702377	Graphic Lake, Canada	-	-	100%
702378	Graphic Lake, Canada	-	-	100%
702379	Graphic Lake, Canada	-	-	100%
702380	Graphic Lake, Canada	-	-	100%
702381	Graphic Lake, Canada	-	-	100%
702382	Graphic Lake, Canada	-	-	100%
702383	Graphic Lake, Canada	-	-	100%
702384	Graphic Lake, Canada	-	-	100%
702385	Graphic Lake, Canada	-	-	100%
702386	Graphic Lake, Canada	-	-	100%
702387	Graphic Lake, Canada	-	-	100%
702388	Graphic Lake, Canada	-	-	100%
702389	Graphic Lake, Canada	-	-	100%
702310	Graphic Lake, Canada	-	-	100%
702300	Graphic Lake, Canada	-	-	100%
702307	Graphic Lake, Canada	-	-	100%
702301	Graphic Lake, Canada	-	-	100%
702298	Graphic Lake, Canada	-	-	100%
702294	Graphic Lake, Canada	-	-	100%
702302	Graphic Lake, Canada	-	-	100%
702297	Graphic Lake, Canada	-	-	100%
702293	Graphic Lake, Canada	-	-	100%
702295	Graphic Lake, Canada	-	-	100%
702305	Graphic Lake, Canada	-	-	100%
702311	Graphic Lake, Canada	-	-	100%
702287	Graphic Lake, Canada	-	-	100%
702288	Graphic Lake, Canada	-	-	100%
702289	Graphic Lake, Canada	-	-	100%
702303	Graphic Lake, Canada	-	-	100%
702292	Graphic Lake, Canada	-	-	100%
702308	Graphic Lake, Canada	-	-	100%
702304	Graphic Lake, Canada	-	-	100%
702290	Graphic Lake, Canada	-	-	100%
702299	Graphic Lake, Canada	-	-	100%
702309	Graphic Lake, Canada	-	-	100%
702306	Graphic Lake, Canada	-	-	100%
702291	Graphic Lake, Canada	-	-	100%
702296	Graphic Lake, Canada	-	-	100%
703383	Mavis Lake, Canada	-	-	100%
703384	Mavis Lake, Canada	-	-	100%



703385	Mavis Lake, Canada	-	-	100%
703386	Mavis Lake, Canada	-	-	100%
703387	Mavis Lake, Canada	-	-	100%
703388	Mavis Lake, Canada	-	-	100%
703389	Mavis Lake, Canada	-	-	100%
703390	Mavis Lake, Canada	-	-	100%
703391	Mavis Lake, Canada	-	-	100%
703392	Mavis Lake, Canada	-	-	100%
703393	Mavis Lake, Canada	-	-	100%
703394	Mavis Lake, Canada	-	-	100%
703395	Mavis Lake, Canada	-	-	100%
703396	Mavis Lake, Canada	-	-	100%
703397	Mavis Lake, Canada	-	-	100%
703398	Mavis Lake, Canada	-	-	100%
703399	Mavis Lake, Canada	-	-	100%
703400	Mavis Lake, Canada	-	-	100%
703401	Mavis Lake, Canada	-	-	100%
703402	Mavis Lake, Canada	-	-	100%
703403	Mavis Lake, Canada	-	-	100%
703404	Mavis Lake, Canada	-	-	100%
703405	Mavis Lake, Canada	-	-	100%
703406	Mavis Lake, Canada	-	-	100%
703407	Mavis Lake, Canada	-	-	100%
703408	Mavis Lake, Canada	-	-	100%
703409	Mavis Lake, Canada	-	-	100%
703410	Mavis Lake, Canada	-	-	100%
703411	Mavis Lake, Canada	-	-	100%
703412	Mavis Lake, Canada	-	-	100%
703413	Mavis Lake, Canada	-	-	100%
703414	Mavis Lake, Canada	-	-	100%
703415	Mavis Lake, Canada	-	-	100%
703416	Mavis Lake, Canada	-	-	100%
703417	Mavis Lake, Canada	-	-	100%
703418	Mavis Lake, Canada	-	-	100%
703419	Mavis Lake, Canada	-	-	100%
703420	Mavis Lake, Canada	-	-	100%
703421	Mavis Lake, Canada	-	-	100%
703422	Mavis Lake, Canada	-	-	100%
703423	Mavis Lake, Canada	-	-	100%
703424	Mavis Lake, Canada	-	-	100%
703425	Mavis Lake, Canada	-	-	100%
703426	Mavis Lake, Canada	-	-	100%
703427	Mavis Lake, Canada	-	-	100%
703428	Mavis Lake, Canada	-	-	100%
703429	Mavis Lake, Canada	-	-	100%
703430	Mavis Lake, Canada	-	-	100%
703431	Mavis Lake, Canada	-	-	100%
703432	Mavis Lake, Canada	-	-	100%
703433	Mavis Lake, Canada	-	-	100%
703434	Mavis Lake, Canada	-	-	100%
703435	Mavis Lake, Canada	-	-	100%



703436	Mavis Lake, Canada	-	-	100%
703437	Mavis Lake, Canada	-	-	100%
703438	Mavis Lake, Canada	-	-	100%
703439	Mavis Lake, Canada	-	-	100%
703440	Mavis Lake, Canada	-	-	100%
703441	Mavis Lake, Canada	-	-	100%
703442	Mavis Lake, Canada	-	-	100%
703443	Mavis Lake, Canada	-	-	100%
703444	Mavis Lake, Canada	-	-	100%
703445	Mavis Lake, Canada	-	-	100%
703446	Mavis Lake, Canada	-	-	100%
703447	Mavis Lake, Canada	-	-	100%
703448	Mavis Lake, Canada	-	-	100%
703449	Mavis Lake, Canada	-	-	100%
703450	Mavis Lake, Canada	-	-	100%
703451	Mavis Lake, Canada	-	-	100%
703452	Mavis Lake, Canada	-	-	100%
703453	Mavis Lake, Canada	-	-	100%
703454	Mavis Lake, Canada	-	-	100%
703455	Mavis Lake, Canada	-	-	100%
703456	Mavis Lake, Canada	-	-	100%
703457	Mavis Lake, Canada	-	-	100%
703458	Mavis Lake, Canada	-	-	100%
703459	Mavis Lake, Canada	-	-	100%
703460	Mavis Lake, Canada	-	-	100%
703461	Mavis Lake, Canada	-	-	100%
703462	Mavis Lake, Canada	-	-	100%
703463	Mavis Lake, Canada	-	-	100%
703464	Mavis Lake, Canada	-	-	100%
703465	Mavis Lake, Canada	-	-	100%
703466	Mavis Lake, Canada	-	-	100%
703467	Mavis Lake, Canada	-	-	100%
703468	Mavis Lake, Canada	-	-	100%
703469	Mavis Lake, Canada	-	-	100%
703470	Mavis Lake, Canada	-	-	100%
703471	Mavis Lake, Canada	-	-	100%
703472	Mavis Lake, Canada	-	-	100%
703473	Mavis Lake, Canada	-	-	100%
703474	Mavis Lake, Canada	-	-	100%
703475	Mavis Lake, Canada	-	-	100%
703476	Mavis Lake, Canada	-	-	100%
703477	Mavis Lake, Canada	-	-	100%
703478	Mavis Lake, Canada	-	-	100%
703479	Mavis Lake, Canada	-	-	100%
703480	Mavis Lake, Canada	-	-	100%
703481	Mavis Lake, Canada	-	-	100%
703482	Mavis Lake, Canada	-	-	100%
703483	Mavis Lake, Canada	-	-	100%
703484	Mavis Lake, Canada	-	-	100%
703485	Mavis Lake, Canada	-	-	100%
703486	Mavis Lake, Canada	-	-	100%



703487	Mavis Lake, Canada	-	-	100%
703488	Mavis Lake, Canada	-	-	100%
703489	Mavis Lake, Canada	-	-	100%
703490	Mavis Lake, Canada	-	-	100%
703491	Mavis Lake, Canada	-	-	100%
703492	Mavis Lake, Canada	-	-	100%
703493	Mavis Lake, Canada	-	-	100%
703494	Mavis Lake, Canada	-	-	100%
703495	Mavis Lake, Canada	-	-	100%
703496	Mavis Lake, Canada	-	-	100%
703497	Mavis Lake, Canada	-	-	100%
703498	Mavis Lake, Canada	-	-	100%
703499	Mavis Lake, Canada	-	-	100%
703500	Mavis Lake, Canada	-	-	100%
703501	Mavis Lake, Canada	-	-	100%
703502	Mavis Lake, Canada	-	-	100%
703503	Mavis Lake, Canada	-	-	100%
703504	Mavis Lake, Canada	-	-	100%
703505	Mavis Lake, Canada	-	-	100%
703506	Mavis Lake, Canada	-	-	100%
703507	Mavis Lake, Canada	-	-	100%
703508	Mavis Lake, Canada	-	-	100%
703509	Mavis Lake, Canada	-	-	100%
703510	Mavis Lake, Canada	-	-	100%
703511	Mavis Lake, Canada	-	-	100%
703512	Mavis Lake, Canada	-	-	100%
703513	Mavis Lake, Canada	-	-	100%
703514	Mavis Lake, Canada	-	-	100%
703515	Mavis Lake, Canada	-	-	100%
703516	Mavis Lake, Canada	-	-	100%
101034	Mavis Lake, Canada	-	-	100%
101215	Mavis Lake, Canada	-	-	100%
101216	Mavis Lake, Canada	-	-	100%
101217	Mavis Lake, Canada	-	-	100%
101218	Mavis Lake, Canada	-	-	100%
101616	Mavis Lake, Canada	-	-	100%
101617	Mavis Lake, Canada	-	-	100%
101618	Mavis Lake, Canada	-	-	100%
101619	Mavis Lake, Canada	-	-	100%
103512	Mavis Lake, Canada	-	-	100%
107330	Mavis Lake, Canada	-	-	100%
107331	Mavis Lake, Canada	-	-	100%
109871	Mavis Lake, Canada	-	-	100%
110434	Mavis Lake, Canada	-	-	100%
110703	Mavis Lake, Canada	-	-	100%
116376	Mavis Lake, Canada	-	-	100%
117689	Mavis Lake, Canada	-	-	100%
117690	Mavis Lake, Canada	-	-	100%
123068	Mavis Lake, Canada	-	-	100%
124332	Mavis Lake, Canada	-	-	100%
129509	Mavis Lake, Canada	-	-	100%



130111	Mavis Lake, Canada	-	-	100%
130299	Mavis Lake, Canada	-	-	100%
130300	Mavis Lake, Canada	-	-	100%
135026	Mavis Lake, Canada	-	-	100%
135728	Mavis Lake, Canada	-	-	100%
138331	Mavis Lake, Canada	-	-	100%
138446	Mavis Lake, Canada	-	-	100%
139468	Mavis Lake, Canada	-	-	100%
139469	Mavis Lake, Canada	-	-	100%
139470	Mavis Lake, Canada	-	-	100%
141103	Mavis Lake, Canada	-	-	100%
141801	Mavis Lake, Canada	-	-	100%
143041	Mavis Lake, Canada	-	-	100%
143046	Mavis Lake, Canada	-	-	100%
143047	Mavis Lake, Canada	-	-	100%
144330	Mavis Lake, Canada	-	-	100%
144441	Mavis Lake, Canada	-	-	100%
151583	Mavis Lake, Canada	-	-	100%
151584	Mavis Lake, Canada	-	-	100%
151585	Mavis Lake, Canada	-	-	100%
151642	Mavis Lake, Canada	-	-	100%
157160	Mavis Lake, Canada	-	-	100%
157161	Mavis Lake, Canada	-	-	100%
158448	Mavis Lake, Canada	-	-	100%
158546	Mavis Lake, Canada	-	-	100%
160902	Mavis Lake, Canada	-	-	100%
166897	Mavis Lake, Canada	-	-	100%
167079	Mavis Lake, Canada	-	-	100%
167080	Mavis Lake, Canada	-	-	100%
167677	Mavis Lake, Canada	-	-	100%
168187	Mavis Lake, Canada	-	-	100%
168188	Mavis Lake, Canada	-	-	100%
168229	Mavis Lake, Canada	-	-	100%
168328	Mavis Lake, Canada	-	-	100%
168329	Mavis Lake, Canada	-	-	100%
176105	Mavis Lake, Canada	-	-	100%
176198	Mavis Lake, Canada	-	-	100%
179416	Mavis Lake, Canada	-	-	100%
179417	Mavis Lake, Canada	-	-	100%
179418	Mavis Lake, Canada	-	-	100%
179741	Mavis Lake, Canada	-	-	100%
179742	Mavis Lake, Canada	-	-	100%
179743	Mavis Lake, Canada	-	-	100%
180192	Mavis Lake, Canada	-	-	100%
180489	Mavis Lake, Canada	-	-	100%
181000	Mavis Lake, Canada	-	-	100%
181037	Mavis Lake, Canada	-	-	100%
182187	Mavis Lake, Canada	-	-	100%
186194	Mavis Lake, Canada	-	-	100%
187649	Mavis Lake, Canada	-	-	100%
188359	Mavis Lake, Canada	-	-	100%



189624	Mavis Lake, Canada	-	-	100%
190960	Mavis Lake, Canada	-	-	100%
190961	Mavis Lake, Canada	-	-	100%
196153	Mavis Lake, Canada	-	-	100%
196154	Mavis Lake, Canada	-	-	100%
197591	Mavis Lake, Canada	-	-	100%
198244	Mavis Lake, Canada	-	-	100%
198245	Mavis Lake, Canada	-	-	100%
198246	Mavis Lake, Canada	-	-	100%
199857	Mavis Lake, Canada	-	-	100%
201802	Mavis Lake, Canada	-	-	100%
203140	Mavis Lake, Canada	-	-	100%
203141	Mavis Lake, Canada	-	-	100%
203142	Mavis Lake, Canada	-	-	100%
203594	Mavis Lake, Canada	-	-	100%
203763	Mavis Lake, Canada	-	-	100%
205589	Mavis Lake, Canada	-	-	100%
205676	Mavis Lake, Canada	-	-	100%
207864	Mavis Lake, Canada	-	-	100%
209134	Mavis Lake, Canada	-	-	100%
209135	Mavis Lake, Canada	-	-	100%
209136	Mavis Lake, Canada	-	-	100%
210239	Mavis Lake, Canada	-	-	100%
210439	Mavis Lake, Canada	-	-	100%
212294	Mavis Lake, Canada	-	-	100%
212295	Mavis Lake, Canada	-	-	100%
215413	Mavis Lake, Canada	-	-	100%
215824	Mavis Lake, Canada	-	-	100%
216365	Mavis Lake, Canada	-	-	100%
216366	Mavis Lake, Canada	-	-	100%
228777	Mavis Lake, Canada	-	-	100%
228778	Mavis Lake, Canada	-	-	100%
230161	Mavis Lake, Canada	-	-	100%
230162	Mavis Lake, Canada	-	-	100%
233613	Mavis Lake, Canada	-	-	100%
233614	Mavis Lake, Canada	-	-	100%
233867	Mavis Lake, Canada	-	-	100%
234948	Mavis Lake, Canada	-	-	100%
235582	Mavis Lake, Canada	-	-	100%
239067	Mavis Lake, Canada	-	-	100%
240149	Mavis Lake, Canada	-	-	100%
246549	Mavis Lake, Canada	-	-	100%
247620	Mavis Lake, Canada	-	-	100%
253509	Mavis Lake, Canada	-	-	100%
253510	Mavis Lake, Canada	-	-	100%
254970	Mavis Lake, Canada	-	-	100%
256451	Mavis Lake, Canada	-	-	100%
256452	Mavis Lake, Canada	-	-	100%
256960	Mavis Lake, Canada	-	-	100%
257849	Mavis Lake, Canada	-	-	100%
257852	Mavis Lake, Canada	-	-	100%



259169	Mavis Lake, Canada	-	-	100%
259285	Mavis Lake, Canada	-	-	100%
264260	Mavis Lake, Canada	-	-	100%
266452	Mavis Lake, Canada	-	-	100%
267141	Mavis Lake, Canada	-	-	100%
270261	Mavis Lake, Canada	-	-	100%
271534	Mavis Lake, Canada	-	-	100%
271591	Mavis Lake, Canada	-	-	100%
272225	Mavis Lake, Canada	-	-	100%
272226	Mavis Lake, Canada	-	-	100%
273079	Mavis Lake, Canada	-	-	100%
274526	Mavis Lake, Canada	-	-	100%
275823	Mavis Lake, Canada	-	-	100%
275824	Mavis Lake, Canada	-	-	100%
275825	Mavis Lake, Canada	-	-	100%
278758	Mavis Lake, Canada	-	-	100%
281841	Mavis Lake, Canada	-	-	100%
282015	Mavis Lake, Canada	-	-	100%
283653	Mavis Lake, Canada	-	-	100%
283654	Mavis Lake, Canada	-	-	100%
283655	Mavis Lake, Canada	-	-	100%
284320	Mavis Lake, Canada	-	-	100%
284321	Mavis Lake, Canada	-	-	100%
286761	Mavis Lake, Canada	-	-	100%
286762	Mavis Lake, Canada	-	-	100%
286763	Mavis Lake, Canada	-	-	100%
289910	Mavis Lake, Canada	-	-	100%
290059	Mavis Lake, Canada	-	-	100%
290060	Mavis Lake, Canada	-	-	100%
290972	Mavis Lake, Canada	-	-	100%
292149	Mavis Lake, Canada	-	-	100%
302230	Mavis Lake, Canada	-	-	100%
303032	Mavis Lake, Canada	-	-	100%
303733	Mavis Lake, Canada	-	-	100%
303734	Mavis Lake, Canada	-	-	100%
305020	Mavis Lake, Canada	-	-	100%
305021	Mavis Lake, Canada	-	-	100%
305022	Mavis Lake, Canada	-	-	100%
306990	Mavis Lake, Canada	-	-	100%
307466	Mavis Lake, Canada	-	-	100%
307467	Mavis Lake, Canada	-	-	100%
310379	Mavis Lake, Canada	-	-	100%
310380	Mavis Lake, Canada	-	-	100%
312334	Mavis Lake, Canada	-	-	100%
314170	Mavis Lake, Canada	-	-	100%
314171	Mavis Lake, Canada	-	-	100%
316293	Mavis Lake, Canada	-	-	100%
316294	Mavis Lake, Canada	-	-	100%
316884	Mavis Lake, Canada	-	-	100%
325843	Mavis Lake, Canada	-	-	100%
326459	Mavis Lake, Canada	-	-	100%



329628	Mavis Lake, Canada	-	-	100%
329629	Mavis Lake, Canada	-	-	100%
329630	Mavis Lake, Canada	-	-	100%
329631	Mavis Lake, Canada	-	-	100%
LEA-108830	Mavis Lake, Canada	-	-	100%
LEA-108831	Mavis Lake, Canada	-	-	100%
LEA-108832	Mavis Lake, Canada	-	-	100%
LEA-108833	Mavis Lake, Canada	-	-	100%
LEA-108834	Mavis Lake, Canada	-	-	100%
LEA-108835	Mavis Lake, Canada	-	-	100%
710276	Plaid & Whitemoon Lake, Canada	-	-	100%
710277	Plaid & Whitemoon Lake, Canada	-	-	100%
710278	Plaid & Whitemoon Lake, Canada	-	-	100%
710279	Plaid & Whitemoon Lake, Canada	-	-	100%
710280	Plaid & Whitemoon Lake, Canada	-	-	100%
710281	Plaid & Whitemoon Lake, Canada	-	-	100%
710282	Plaid & Whitemoon Lake, Canada	-	-	100%
710283	Plaid & Whitemoon Lake, Canada	-	-	100%
710284	Plaid & Whitemoon Lake, Canada	-	-	100%
710285	Plaid & Whitemoon Lake, Canada	-	-	100%
710286	Plaid & Whitemoon Lake, Canada	-	-	100%
710287	Plaid & Whitemoon Lake, Canada	-	-	100%
710288	Plaid & Whitemoon Lake, Canada	-	-	100%
710289	Plaid & Whitemoon Lake, Canada	-	-	100%
710290	Plaid & Whitemoon Lake, Canada	-	-	100%
710291	Plaid & Whitemoon Lake, Canada	-	-	100%
710292	Plaid & Whitemoon Lake, Canada	-	-	100%
710293	Plaid & Whitemoon Lake, Canada	-	-	100%
710294	Plaid & Whitemoon Lake, Canada	-	-	100%
710295	Plaid & Whitemoon Lake, Canada	-	-	100%
710296	Plaid & Whitemoon Lake, Canada	-	-	100%
710297	Plaid & Whitemoon Lake, Canada	-	-	100%
710298	Plaid & Whitemoon Lake, Canada	-	-	100%
710299	Plaid & Whitemoon Lake, Canada	-	-	100%
710300	Plaid & Whitemoon Lake, Canada	-	-	100%
710301	Plaid & Whitemoon Lake, Canada	-	-	100%
710302	Plaid & Whitemoon Lake, Canada	-	-	100%
710303	Plaid & Whitemoon Lake, Canada	-	-	100%
710304	Plaid & Whitemoon Lake, Canada	-	-	100%
710305	Plaid & Whitemoon Lake, Canada	-	-	100%
710306	Plaid & Whitemoon Lake, Canada	-	-	100%
710307	Plaid & Whitemoon Lake, Canada	-	-	100%
710308	Plaid & Whitemoon Lake, Canada	-	-	100%
710309	Plaid & Whitemoon Lake, Canada	-	-	100%
710310	Plaid & Whitemoon Lake, Canada	-	-	100%
710311	Plaid & Whitemoon Lake, Canada	-	-	100%
710312	Plaid & Whitemoon Lake, Canada	-	-	100%
710313	Plaid & Whitemoon Lake, Canada	-	-	100%
710314	Plaid & Whitemoon Lake, Canada	-	-	100%
710315	Plaid & Whitemoon Lake, Canada	-	-	100%
710316	Plaid & Whitemoon Lake, Canada	-	-	100%

Page 17 of 23

Page 18 of 23

Page 19 of 23

Page 20 of 23

Page 21 of 23

Page 22 of 23



717585	Plaid & Whiteloon Lake, Canada	-	-	100%
717586	Plaid & Whiteloon Lake, Canada	-	-	100%
717587	Plaid & Whiteloon Lake, Canada	-	-	100%
717588	Plaid & Whiteloon Lake, Canada	-	-	100%
717589	Plaid & Whiteloon Lake, Canada	-	-	100%
717590	Plaid & Whiteloon Lake, Canada	-	-	100%
717591	Plaid & Whiteloon Lake, Canada	-	-	100%

Appendix 5B

Mining exploration entity or oil and gas exploration entity quarterly cash flow report

Name of entity

Critical Resources Limited

ABN

12 145 184 667

Quarter ended ("current quarter")

30 September 2022

Consolidated statement of cash flows		Current quarter \$A'000	Year to date (9 months) \$A'000
1.	Cash flows from operating activities		
1.1	Receipts from customers	-	-
1.2	Payments for		
	(a) exploration & evaluation	-	-
	(b) development	-	-
	(c) production	-	-
	(d) staff costs	(88)	(254)
	(e) administration and corporate costs	(472)	(1,320)
1.3	Dividends received (see note 3)	-	-
1.4	Interest received	14	35
1.5	Interest and other costs of finance paid	-	-
1.6	Income taxes paid	-	-
1.7	Government grants and tax incentives	-	-
1.8	Other (provide details if material)	-	-
1.9	Net cash from / (used in) operating activities	(546)	(1,539)

2.	Cash flows from investing activities		
2.1	Payments to acquire or for:		
	(a) entities	-	-
	(b) tenements	-	-
	(c) property, plant and equipment	(3)	(5)
	(d) exploration & evaluation	(3,017)	(6,695)
	(e) investments	-	(2,724)
	(f) other non-current assets	-	-

Consolidated statement of cash flows		Current quarter \$A'000	Year to date (9 months) \$A'000
2.2	Proceeds from the disposal of:		
	(a) entities	-	-
	(b) tenements	-	-
	(c) property, plant and equipment	-	-
	(d) investments	-	-
	(e) other non-current assets	-	-
2.3	Cash flows from loans to other entities	-	-
2.4	Dividends received (see note 3)	-	-
2.5	Other (provide details if material)	-	-
2.6	Net cash from / (used in) investing activities	(3,020)	(9,424)

3.	Cash flows from financing activities		
3.1	Proceeds from issues of equity securities (excluding convertible debt securities)	-	12,500
3.2	Proceeds from issue of convertible debt securities	-	-
3.3	Proceeds from exercise of options	7	368
3.4	Transaction costs related to issues of equity securities or convertible debt securities	-	(1,160)
3.5	Proceeds from borrowings	-	-
3.6	Repayment of borrowings	-	-
3.7	Transaction costs related to loans and borrowings	-	-
3.8	Dividends paid	-	-
3.9	Proceeds from capital raising held	-	-
3.10	Net cash from / (used in) financing activities	7	11,708

4.	Net increase / (decrease) in cash and cash equivalents for the period		
4.1	Cash and cash equivalents at beginning of period	9,065	4,749
4.2	Net cash from / (used in) operating activities (item 1.9 above)	(546)	(1,539)
4.3	Net cash from / (used in) investing activities (item 2.6 above)	(3,020)	(9,424)
4.4	Net cash from / (used in) financing activities (item 3.10 above)	7	11,708

Consolidated statement of cash flows		Current quarter \$A'000	Year to date (9 months) \$A'000
4.5	Effect of movement in exchange rates on cash held	25	37
4.6	Cash and cash equivalents at end of period	5,531	5,531

5.	Reconciliation of cash and cash equivalents at the end of the quarter (as shown in the consolidated statement of cash flows) to the related items in the accounts	Current quarter \$A'000	Previous quarter \$A'000
5.1	Bank balances	5,200	8,749
5.2	Call deposits	-	-
5.3	Bank overdrafts	-	-
5.4	Other (security deposits)	331	316
5.5	Cash and cash equivalents at end of quarter (should equal item 4.6 above)	5,531	9,065

6.	Payments to related parties of the entity and their associates	Current quarter \$A'000
6.1	Aggregate amount of payments to related parties and their associates included in item 1	107
6.2	Aggregate amount of payments to related parties and their associates included in item 2	31

Note: if any amounts are shown in items 6.1 or 6.2, your quarterly activity report must include a description of, and an explanation for, such payments.

7.	Financing facilities <i>Note: the term "facility" includes all forms of financing arrangements available to the entity.</i> <i>Add notes as necessary for an understanding of the sources of finance available to the entity.</i>	Total facility amount at quarter end \$A'000	Amount drawn at quarter end \$A'000
7.1	Loan facilities	-	-
7.2	Credit standby arrangements	-	-
7.3	Other (please specify)	-	-
7.4	Total financing facilities	-	-
7.5	Unused financing facilities available at quarter end		-
7.6	Include in the box below a description of each facility above, including the lender, interest rate, maturity date and whether it is secured or unsecured. If any additional financing facilities have been entered into or are proposed to be entered into after quarter end, include a note providing details of those facilities as well.		
	Not applicable		

8.	Estimated cash available for future operating activities	\$A'000
8.1	Net cash from / (used in) operating activities (item 1.9)	(546)
8.2	(Payments for exploration & evaluation classified as investing activities) (item 2.1(d))	(3,017)
8.3	Total relevant outgoings (item 8.1 + item 8.2)	(3,563)
8.4	Cash and cash equivalents at quarter end (item 4.6)	5,531
8.5	Unused finance facilities available at quarter end (item 7.5)	-
8.6	Total available funding (item 8.4 + item 8.5)	5,531
8.7	Estimated quarters of funding available (item 8.6 divided by item 8.3)	1.6
	<i>Note: if the entity has reported positive relevant outgoings (ie a net cash inflow) in item 8.3, answer item 8.7 as "N/A". Otherwise, a figure for the estimated quarters of funding available must be included in item 8.7.</i>	
8.8	If item 8.7 is less than 2 quarters, please provide answers to the following questions:	
8.8.1	Does the entity expect that it will continue to have the current level of net operating cash flows for the time being and, if not, why not?	
	Answer: No. The Company does not expect that it will continue to have the current level of net operating cash outflows. As announced, exploration works at the Halls Peak project concluded in early October.	
8.8.2	Has the entity taken any steps, or does it propose to take any steps, to raise further cash to fund its operations and, if so, what are those steps and how likely does it believe that they will be successful?	
	Answer: No. Working capital is continuously managed. The Company notes that it has in the money options on issue to the amount of \$2,154,329.	
8.8.3	Does the entity expect to be able to continue its operations and to meet its business objectives and, if so, on what basis?	
	Answer: Yes. The Company believes it has sufficient capital to continue its operations.	
	<i>Note: where item 8.7 is less than 2 quarters, all of questions 8.8.1, 8.8.2 and 8.8.3 above must be answered.</i>	

Compliance statement

- 1 This statement has been prepared in accordance with accounting standards and policies which comply with Listing Rule 19.11A.
- 2 This statement gives a true and fair view of the matters disclosed.

Date:26 September 2022.....

Authorised by:By the Board.....
(Name of body or officer authorising release – see note 4)

Notes

1. This quarterly cash flow report and the accompanying activity report provide a basis for informing the market about the entity's activities for the past quarter, how they have been financed and the effect this has had on its cash position. An entity that wishes to disclose additional information over and above the minimum required under the Listing Rules is encouraged to do so.
2. If this quarterly cash flow report has been prepared in accordance with Australian Accounting Standards, the definitions in, and provisions of, *AASB 6: Exploration for and Evaluation of Mineral Resources* and *AASB 107: Statement of Cash Flows* apply to this report. If this quarterly cash flow report has been prepared in accordance with other accounting standards agreed by ASX pursuant to Listing Rule 19.11A, the corresponding equivalent standards apply to this report.
3. Dividends received may be classified either as cash flows from operating activities or cash flows from investing activities, depending on the accounting policy of the entity.
4. If this report has been authorised for release to the market by your board of directors, you can insert here: "By the board". If it has been authorised for release to the market by a committee of your board of directors, you can insert here: "By the [name of board committee – eg Audit and Risk Committee]". If it has been authorised for release to the market by a disclosure committee, you can insert here: "By the Disclosure Committee".
5. If this report has been authorised for release to the market by your board of directors and you wish to hold yourself out as complying with recommendation 4.2 of the ASX Corporate Governance Council's *Corporate Governance Principles and Recommendations*, the board should have received a declaration from its CEO and CFO that, in their opinion, the financial records of the entity have been properly maintained, that this report complies with the appropriate accounting standards and gives a true and fair view of the cash flows of the entity, and that their opinion has been formed on the basis of a sound system of risk management and internal control which is operating effectively.