



MIRAMAR
RESOURCES LTD.

Miramar Resources Ltd

“Creating shareholder value through discovery”

**ANNUAL GENERAL MEETING PRESENTATION
3 NOVEMBER 2022**

ASX: M2R

Disclaimer/Competent Person Statement

Forward-Looking Statements

Statements in this presentation which are not statements of historical facts, including but not limited to those relating to the proposed transactions, are forward-looking statements. These statements instead represent management's current expectations, estimates and projections regarding future events.

Although management believes the expectations reflected in such forward-looking statements are reasonable, forward-looking statements are based on the opinions, assumptions and estimates of management at the date the statements are made and are subject to a variety of risks and uncertainties and other factors that could cause actual events or results to differ materially from those projected in the forward-looking statements. Accordingly, investors are cautioned not to place undue reliance on such statements.

Competent Person Statement

The information in this report that relates to Exploration Targets or Exploration Results is based on information compiled by Allan Kelly, a "Competent Person" who is a Member of The Australian Institute of Geoscientists. Allan Kelly is the Executive Chairman of Miramar Resources Ltd. He is a full-time employee of Miramar Resources Ltd and holds shares and options in the company.

Allan Kelly has sufficient experience that is relevant to the style of mineralisation and type of deposits under consideration and to the activity being undertaken to Qualify as a "Competent Person" as defined in the 2012 Edition of the 'Australasian Code for Reporting of Exploration Results, Mineral Resources and Ore Reserves'. Allan Kelly consents to the inclusion in this presentation of the matters based on his information and in the form and context in which it appears.

Information on historical results for all projects within this presentation, including JORC Table 1 and 2 Information, is included in the Miramar Resources Limited Prospectus dated 4 September 2020.

JORC Table 1 and 2 Information for Miramar results for all projects within this presentation are included in the relevant ASX releases.

Outline

- 2021-22 FY Summary
 - **Gidji JV**
 - **Glandore**
 - **Whaleshark**
 - **Other Projects**
- Plans for 2022-23 FY

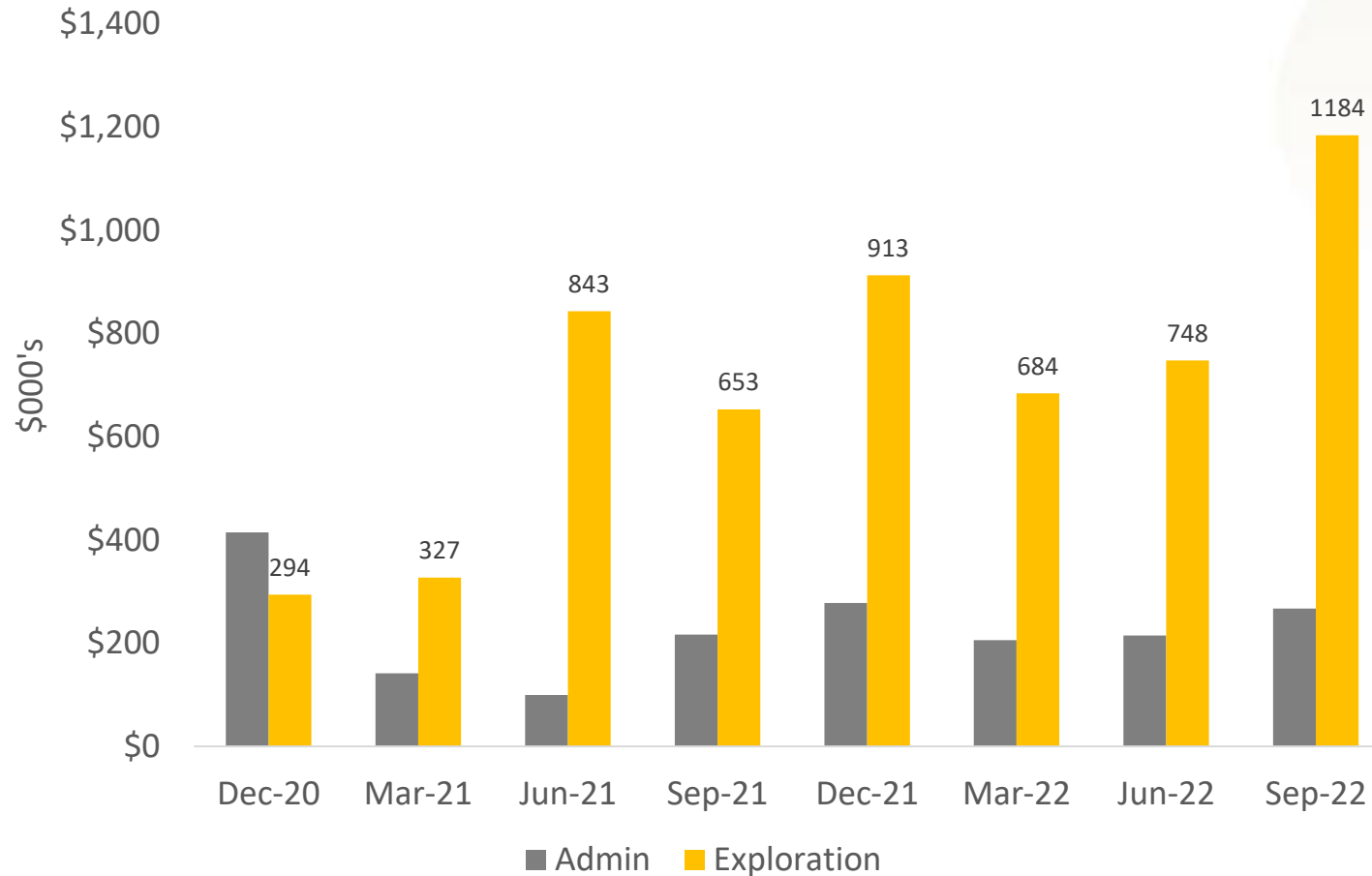


Another busy year...2021/22 at a glance

Project	Sept	Dec	Mar	Jun	Sept	Dec
Glandore	Aircore	Gravity			DD UAV mags	DD
Gidji JV	Aircore Ground mags	Aircore	Aircore/RC UAV mags Heritage/flora	RC/DD IP Geochem	Aircore	
Whaleshark	MMI	MMI			Aircore Gravity	
Randalls					Aircore	
Bangemall		Geochem	Mags/AEM			Mags Radiometrics
Lang Well		Site prep		UAV mags Geochem		Aircore*
Corporate /Marketing	Gold Coast	RIU Resurgence	RIU Explorers	Capital raising RIU Sydney	Diggers	SW Connect RIU Resurgence

Spending money on the ground

Quarterly Expenditure



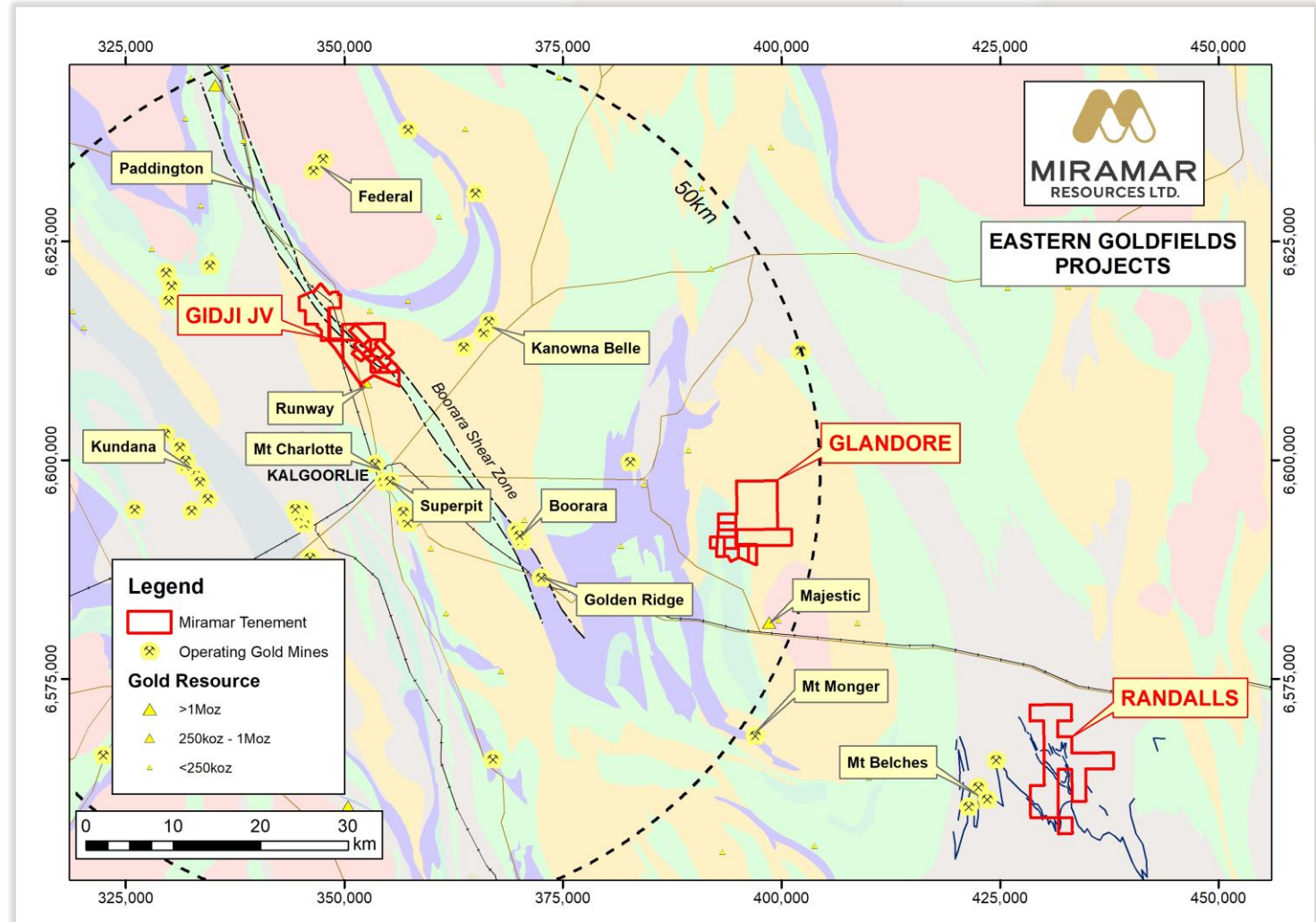
Since listing:

- **~75%** of cashflow on active exploration programmes
- 1,206 aircore holes (59,742m)
- 28 RC holes (4,277m)
- 8 DD holes (1,782m)
- Multiple geophysical and geochemical surveys

Eastern Goldfields Projects

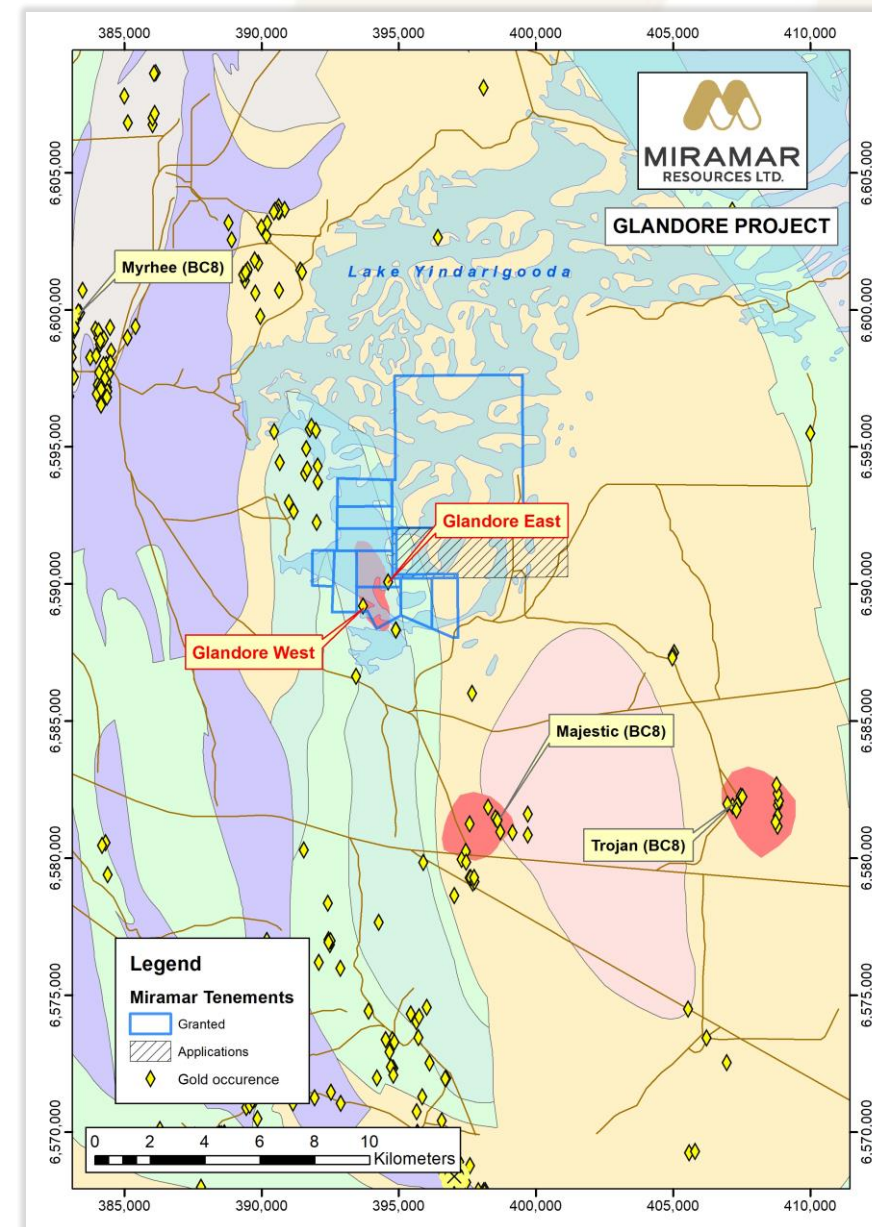
Strategic land position in world-class gold province

- Three underexplored projects close to Kalgoorlie-Boulder
- Year-round access
- Proximity to multiple gold mining/processing operations



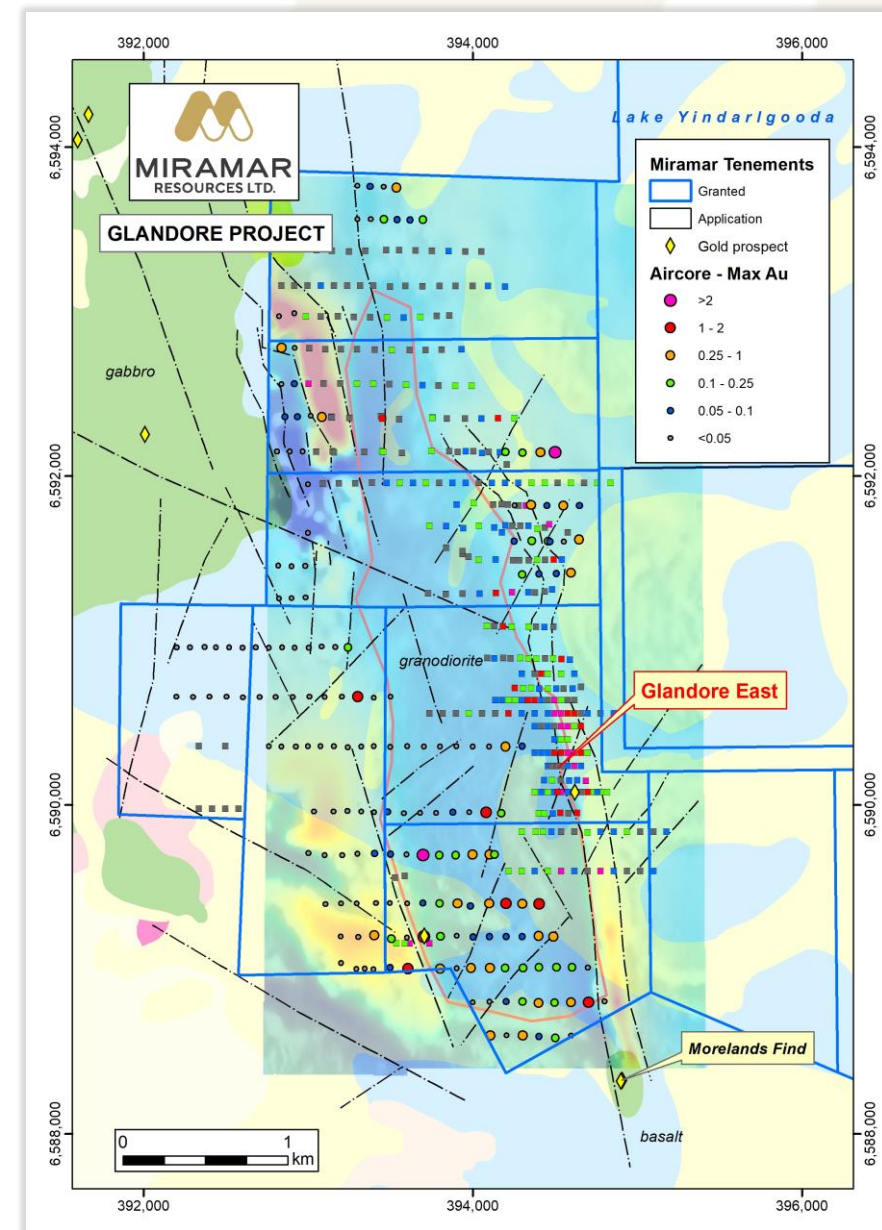
Glandore

- Underexplored **high-grade gold** opportunity – 40km E of Kalgoorlie
- Close to various gold mining/processing infrastructure



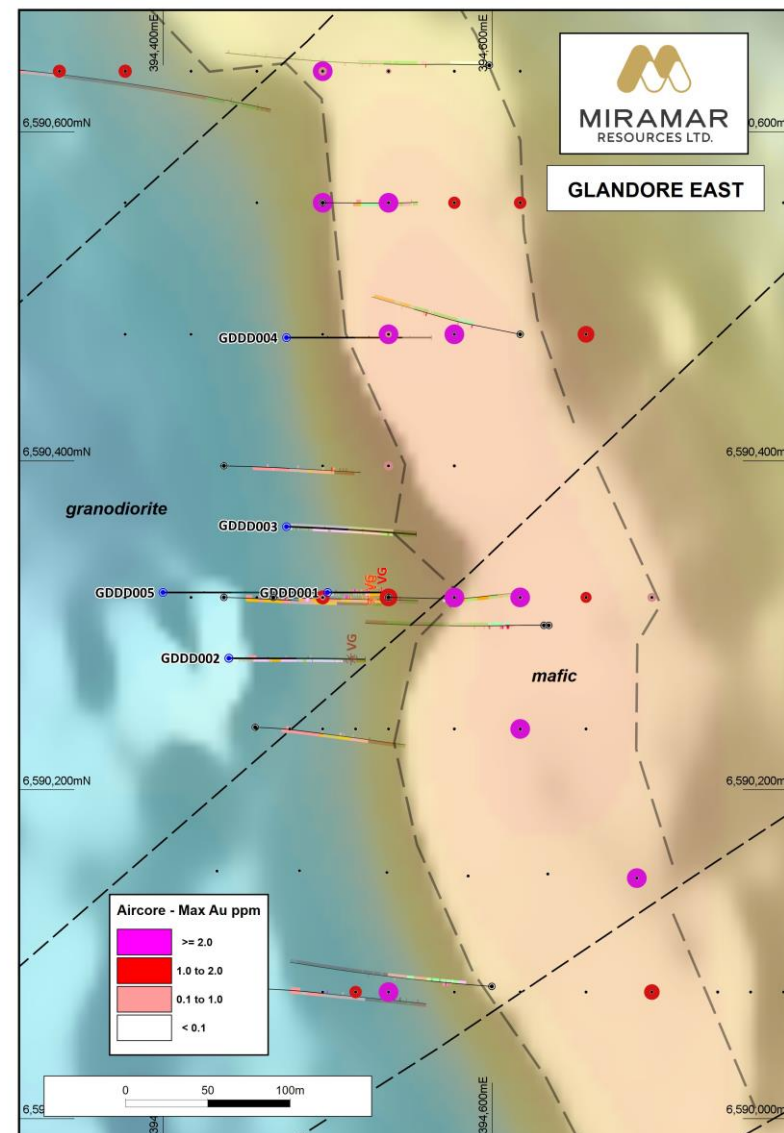
Glandore

- Large gold footprint outlined by historic and recent land/lake aircore drilling
- High-grade gold results at mafic/granite contact – “**Glandore East**” target
- Detailed UAV magnetic survey highlights multiple NE-trending mineralised structures crosscutting granite pluton



Glandore East

- Initial 7-hole DD programme (~1000m)
- **High-grade gold** in first two DDH's
 - **GDDD001 - 0.8m @ 13.9g/t Au**
 - **GDDD002 – 0.8m @ 5.91g/t Au**
- Drilling ongoing – ***assays pending***
- Significant strike potential – open at depth



Glandore East



GDDD005



GDDD004
Sulphidised
mafic

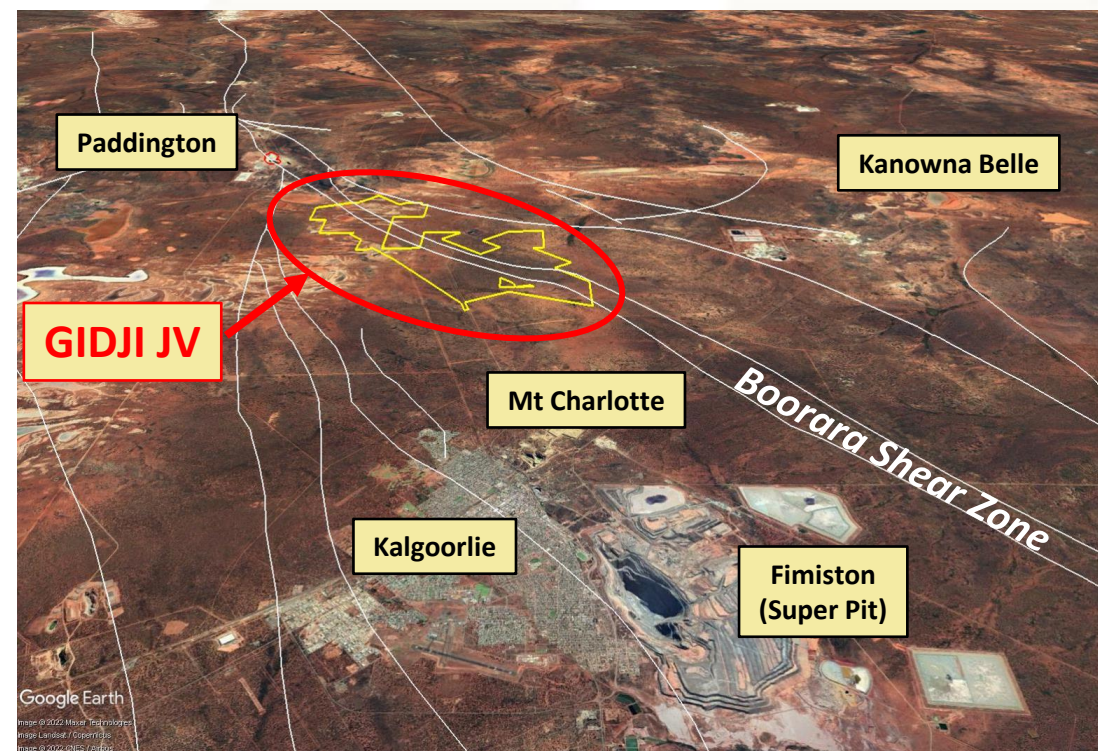


GDDD002
VG
in granodiorite

Gidji JV

“The cheapest house on the best street”

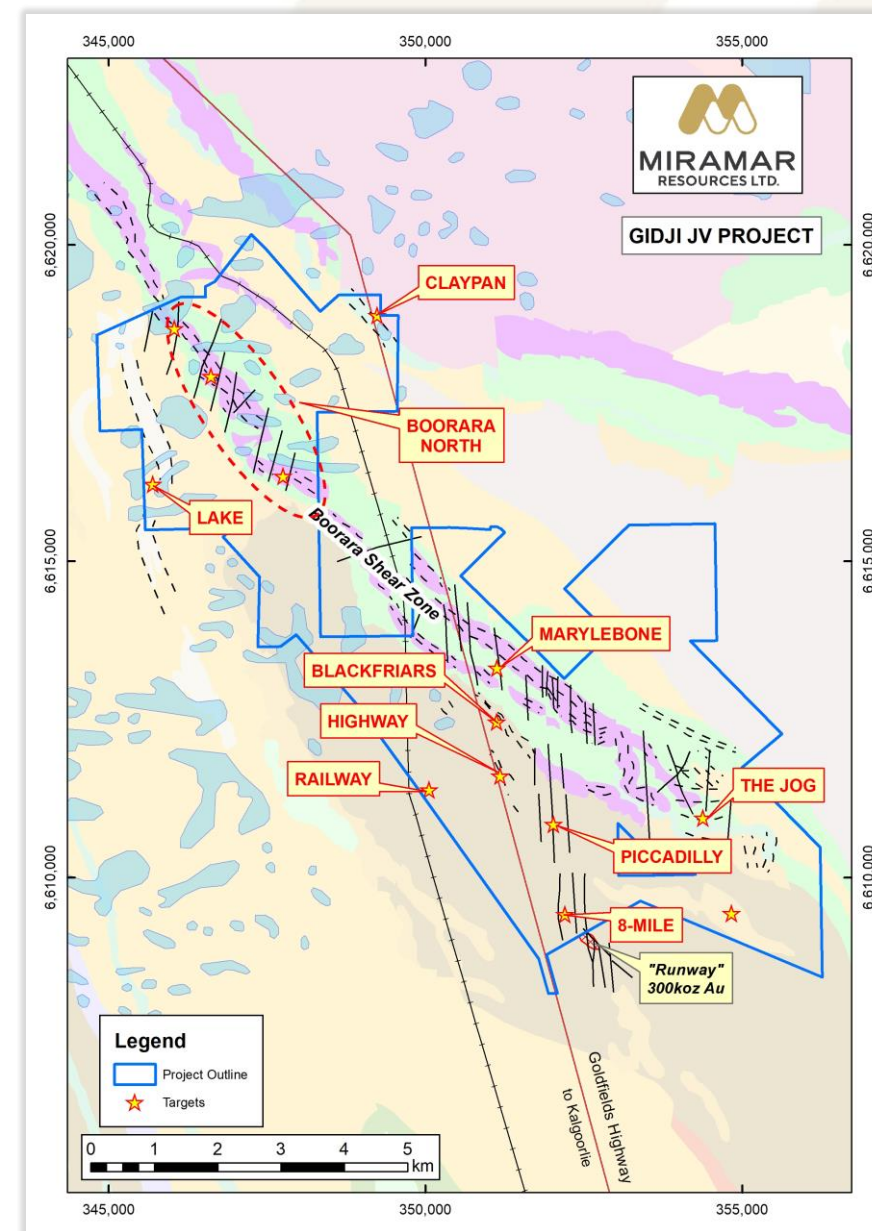
- Strategic land package **15km N of Kalgoorlie** via major highway
- **15km of major regional structure** along strike from multiple large gold deposits
- Multiple gold processing options nearby
- Nickel sulphide potential



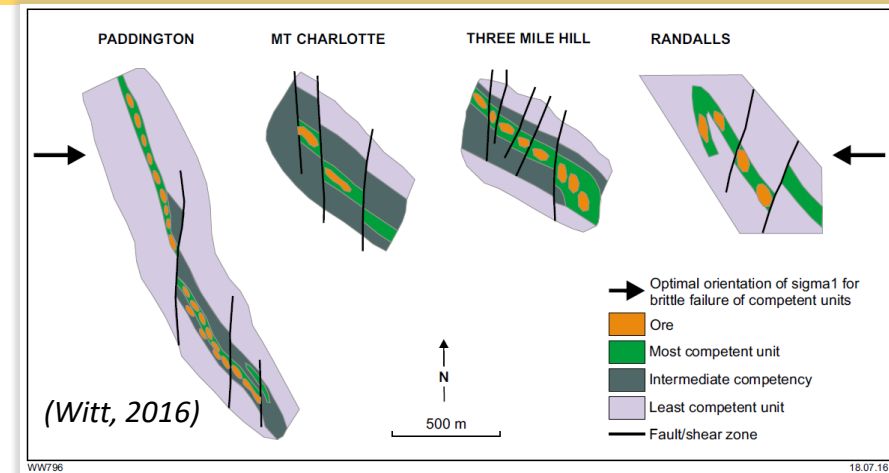
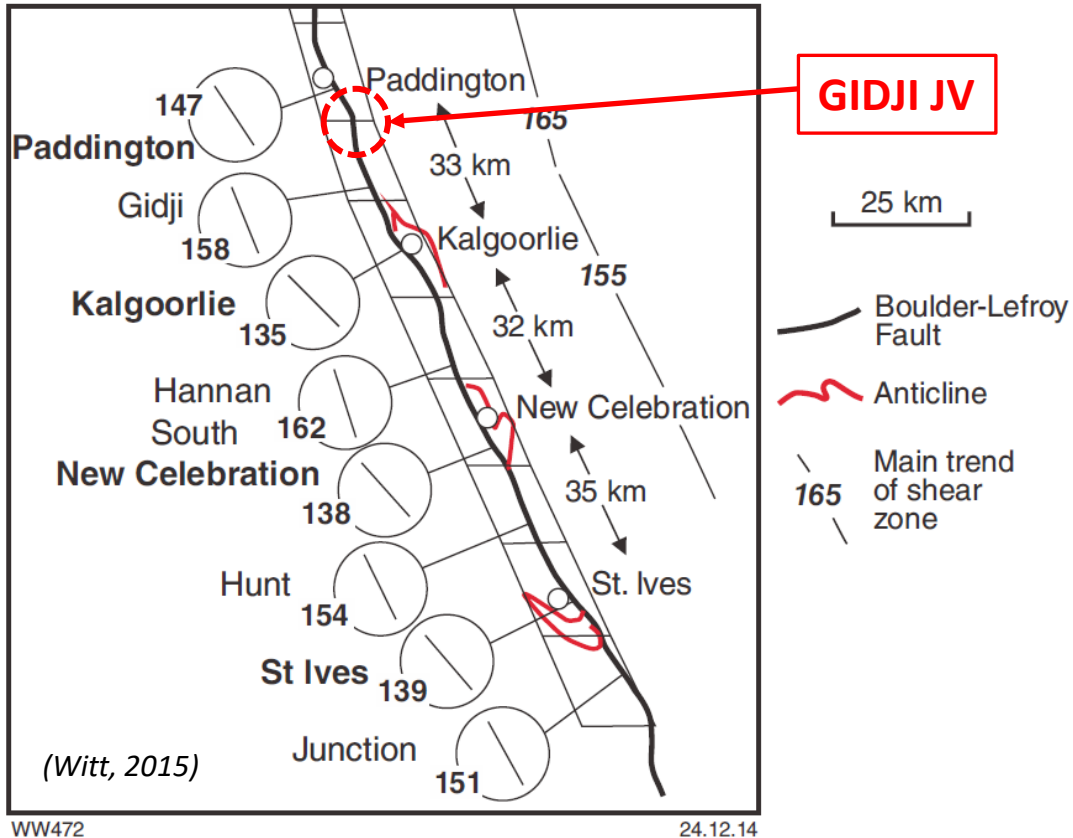
Gidji JV

***“Unique camp-scale gold opportunity
– on Kalgoorlie's doorstep”***

- Substantial strike length of mineralised structure – **“Boorara Shear Zone”**
- **Underexplored** – limited deep drilling
- Potential for multiple new gold deposits in different host rocks/structural settings
- Multiple systematic drilling programmes
- Detailed UAV mags and orientation IP
- Working to refine targets for deeper RC/DD drilling



Gidji JV - Exploration models

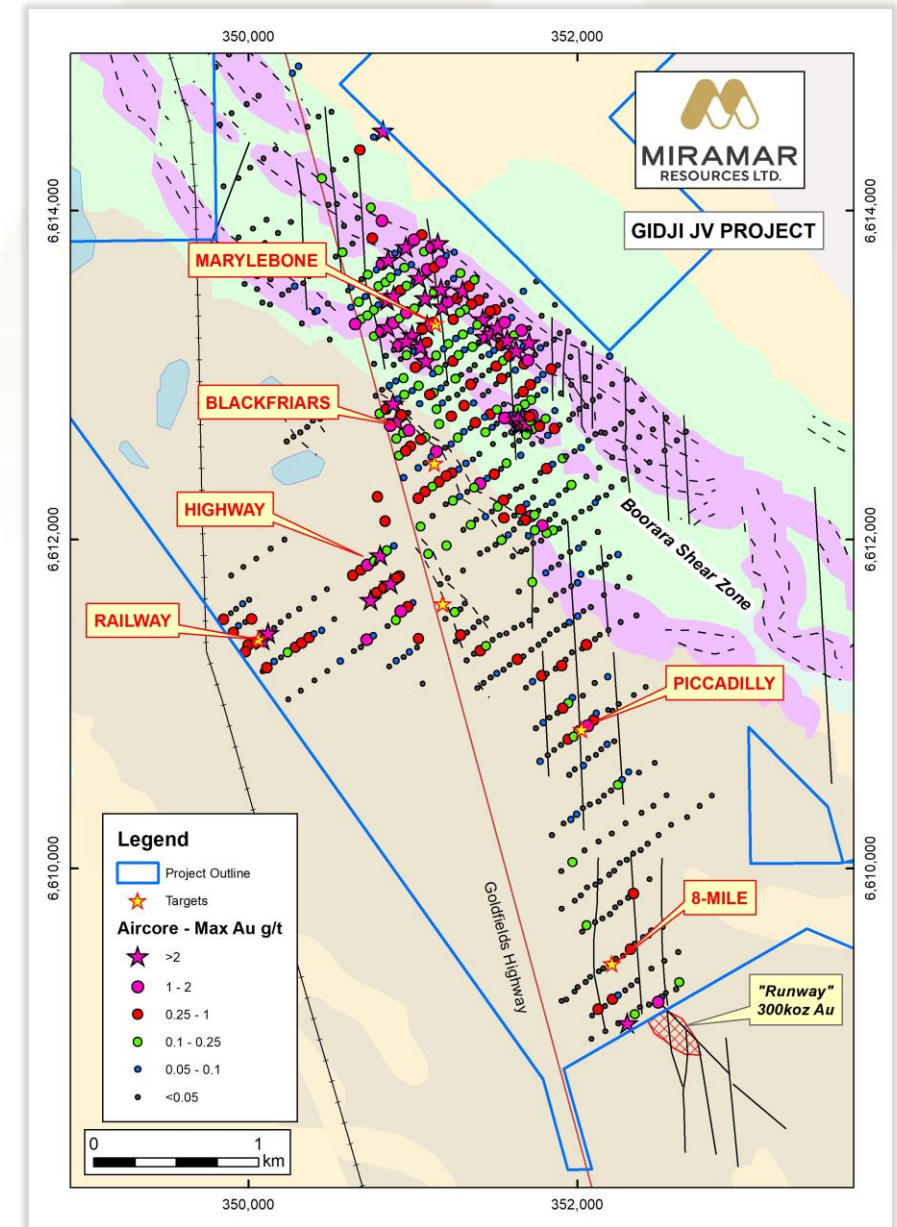


- Flexure/bend in major regional structure
- D2 shearing and major mineralising event
- Competency contrast
 - mafic/sediment contacts
 - brittle rocks within softer units
- Later cross-cutting D4 faults

Gidji JV

Multiple large new gold targets outlined with minimal deep drilling to date

- **Marylebone**
 - 2 x **>1.6km** long gold anomalies with multiple high-grade results up to **13g/t Au**
- **Blackfriars**
 - **>1.4km** long anomaly at mafic/sediment contact with results up to **11.8g/t Au (EOH)**
- **Highway/Piccadilly**
 - **>1km** long anomaly with multiple **+2g/t** results
- **Railway**
 - High-grade hits in Black Flag sediments
- Working to refine targets for deeper RC/DD drilling

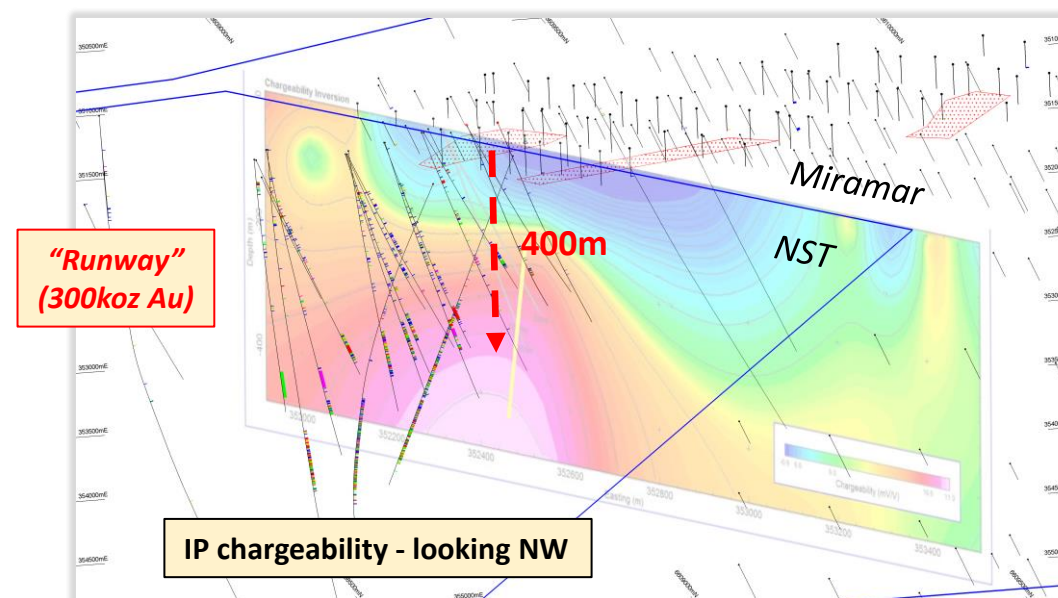


Gidji JV – 8 Mile

Watching our neighbours with interest

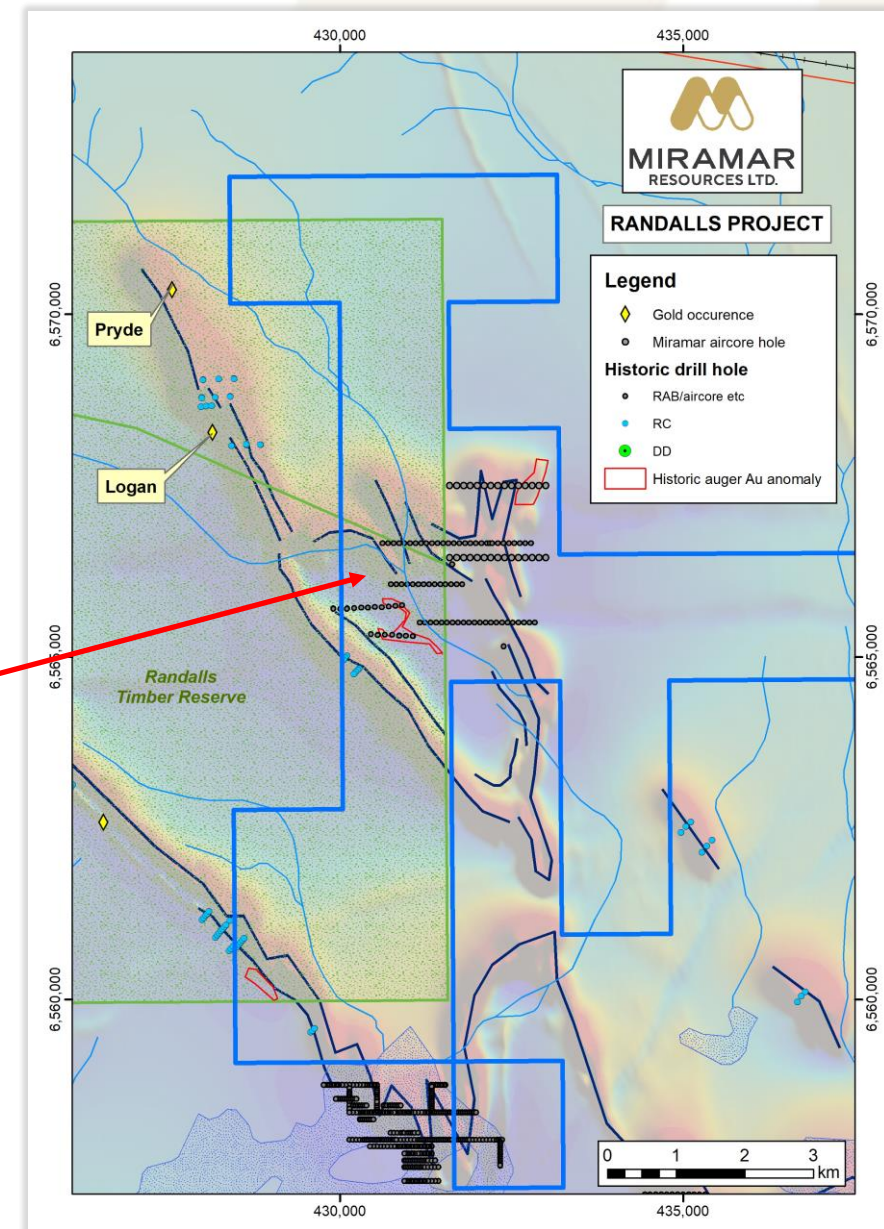
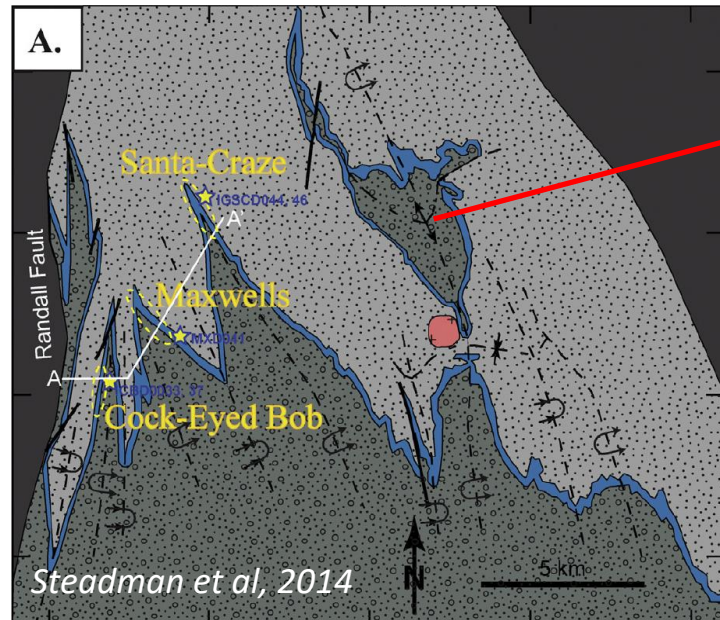
- Adjacent to 300koz “Runway” deposit
 - 6m @ 11.73g/t Au
 - 7m @ 8.51g/t Au
 - 6.3m @ 7.63g/t Au
 - 217m @ 2.06g/t Au*
 - 281m @ 1.30g/t Au*
- Limited diamond drilling in 2021 intersected W-dipping “Runway porphyry”
- IP survey indicates strong chargeability target at approx. 400m depth
- Recent deeper discovery beneath Runway
 - drill hole azimuths indicate E’ly dip?

* Denotes down-dip holes

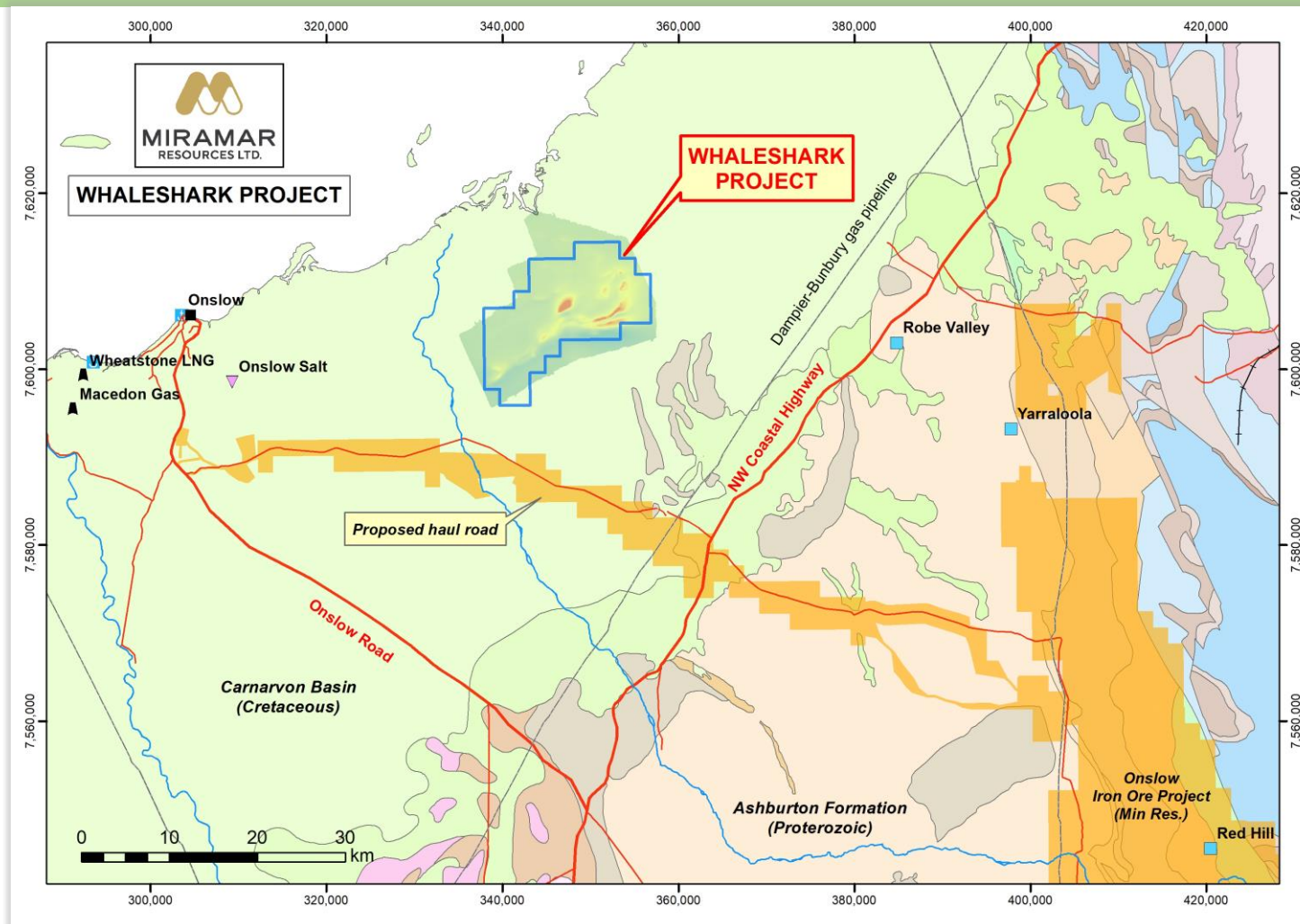


Randalls

- 70km E of Kalgoorlie - adjacent to high-grade gold mines and haul road
- Poorly tested folded BIF - high-grade rock chips along strike
- Aircore drilling completed - assays pending



Whaleshark Cu-Au Project

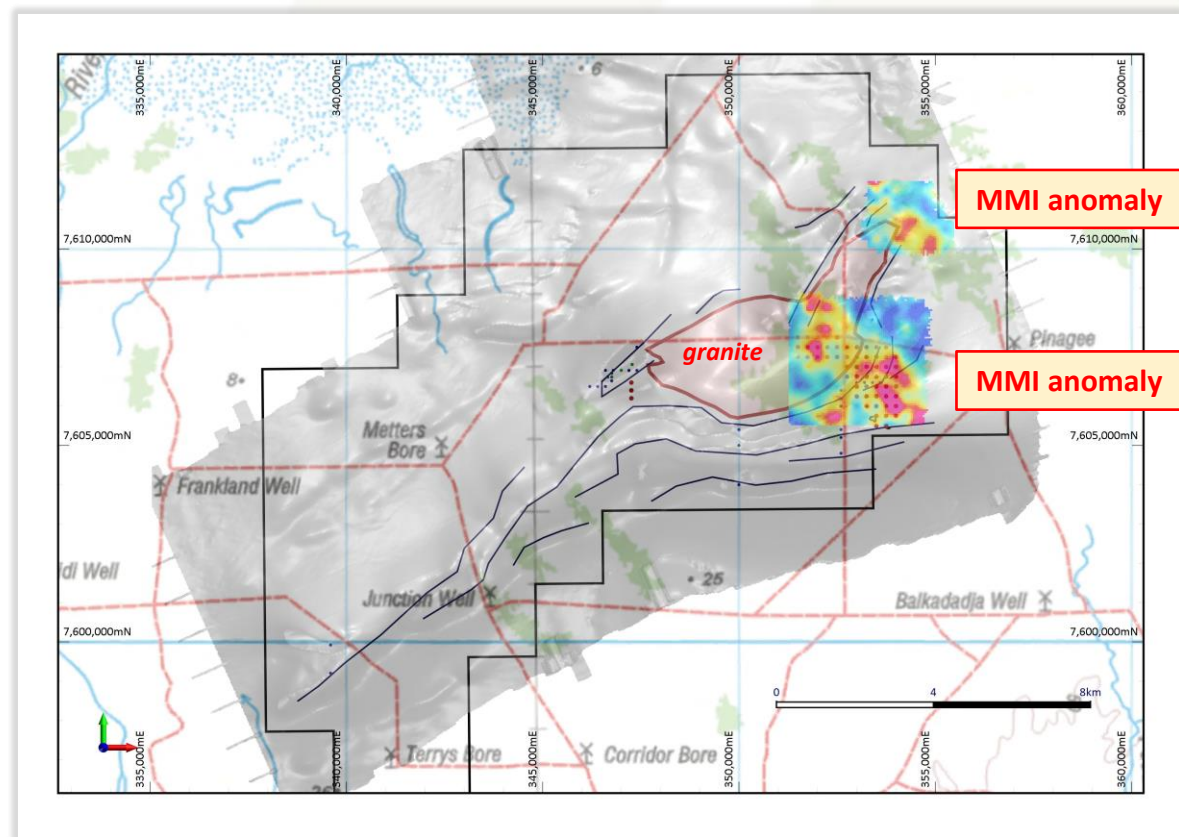


- 40km east of Onslow
- Proterozoic BIF and granite under Carnarvon Basin sediments
- Proximity to major infrastructure

Whaleshark Cu-Au Project



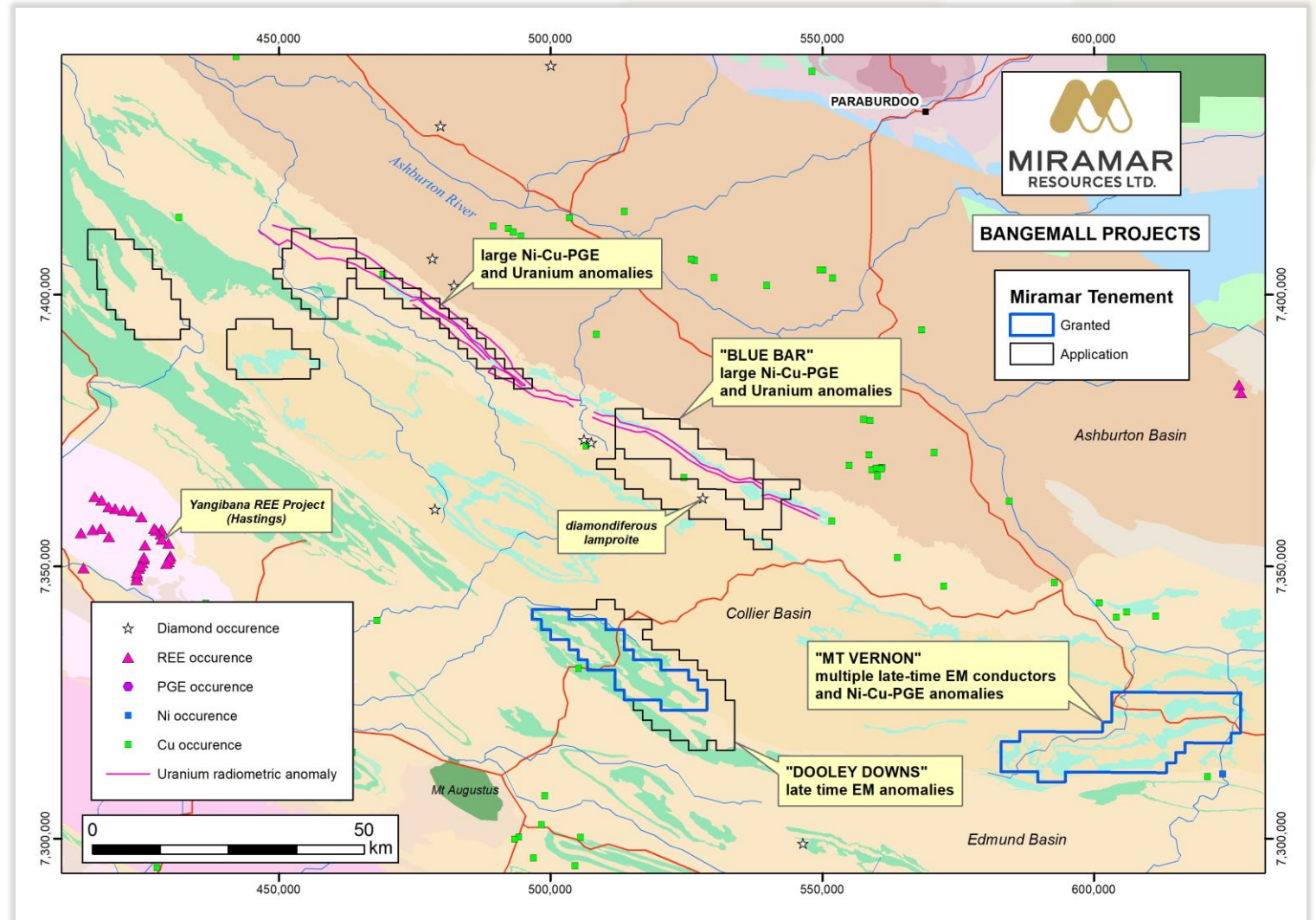
- Large **Cu-Ag-U-REE** MMI soil anomalies on edge of Proterozoic granite
- Depth to basement mostly <100m
- *Aircore assays pending*



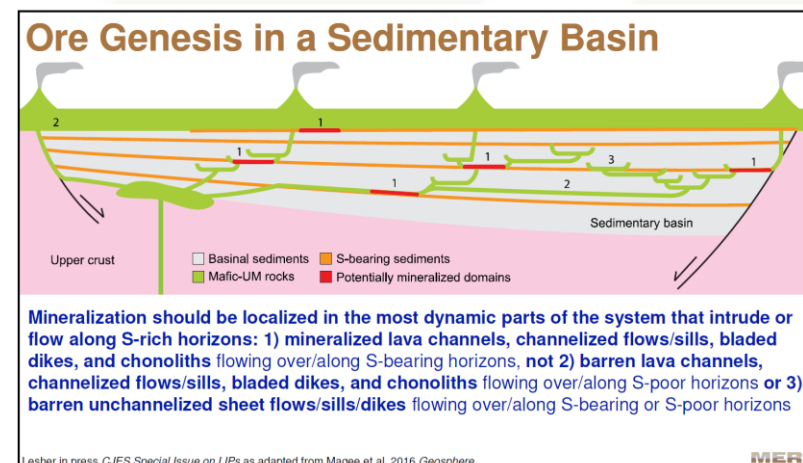
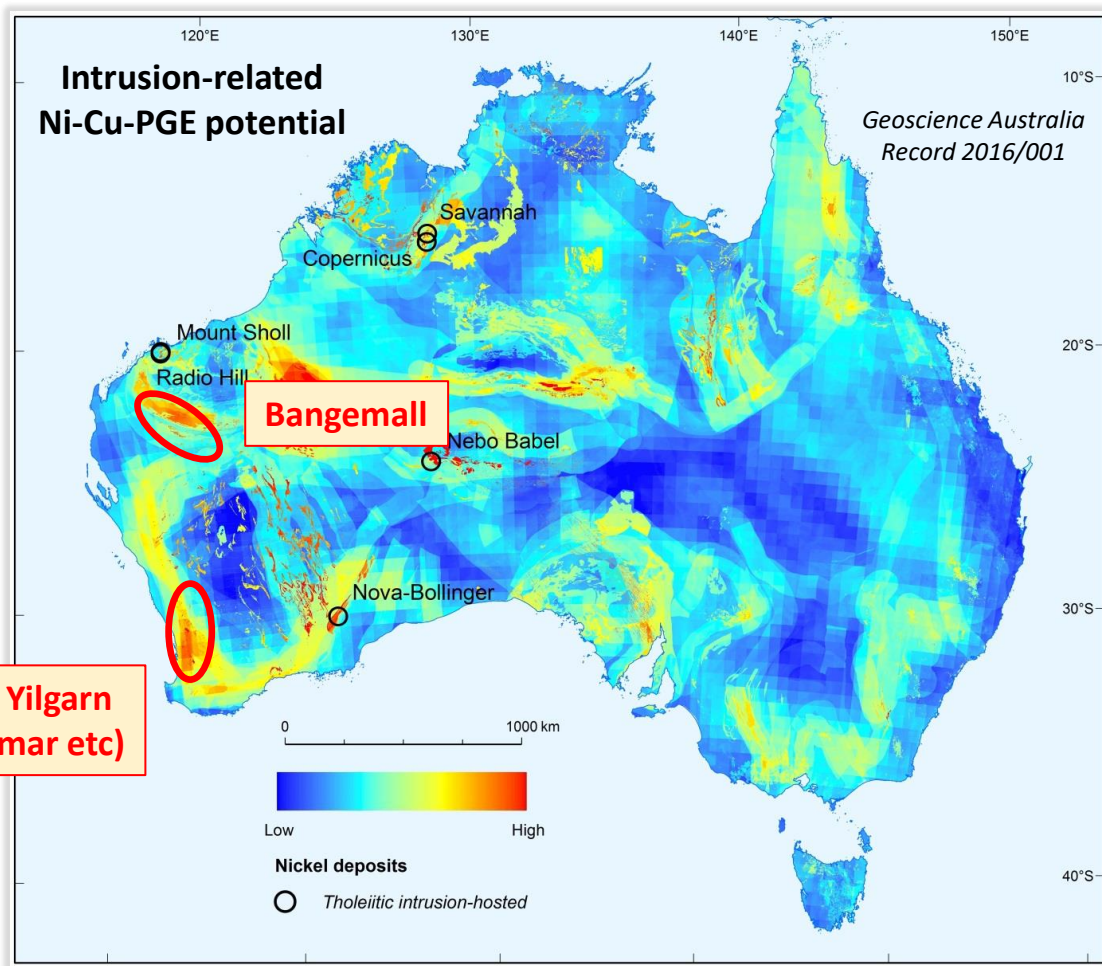
Bangemall

Strategic land position in emerging mineral province

- Regional indicators:
 - Crustal-scale faults
 - Prot. dolerite sills
 - **Ni-Cu-PGE** stream sed/soil anomalies
- **Mt Vernon** - late-time EM conductors
- **Blue Bar** - diamondiferous lamproite
- **Dooley Downs** - detailed mag/radiometric survey



Bangemall - Ni-Cu-PGE potential



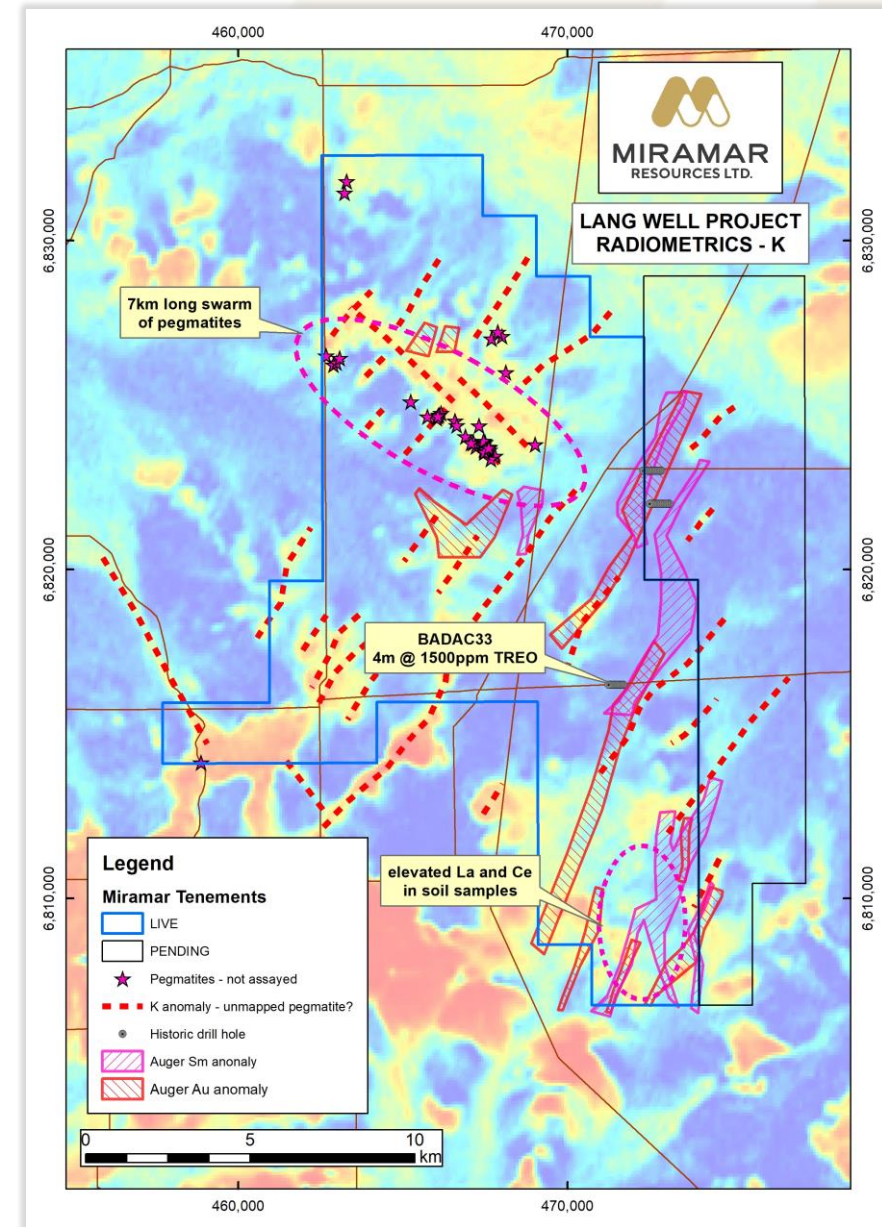
Leshner, 2019



Lang Well

REE +/- gold potential

- Multiple large untested auger anomalies
 - **Au and REE (Samarium)**
- Elevated **La** and **Ce** in soil sampling
- Multiple potential pegmatites identified from regional radiometric data
- Shallow (clay-hosted) REE mineralisation in historic aircore drilling
 - **4m @ 1500ppm TREO**
 - **High proportion of Nd_2O_3**
- Systematic pegmatite sampling and aircore drilling planned



Target pipeline provides substantial upside

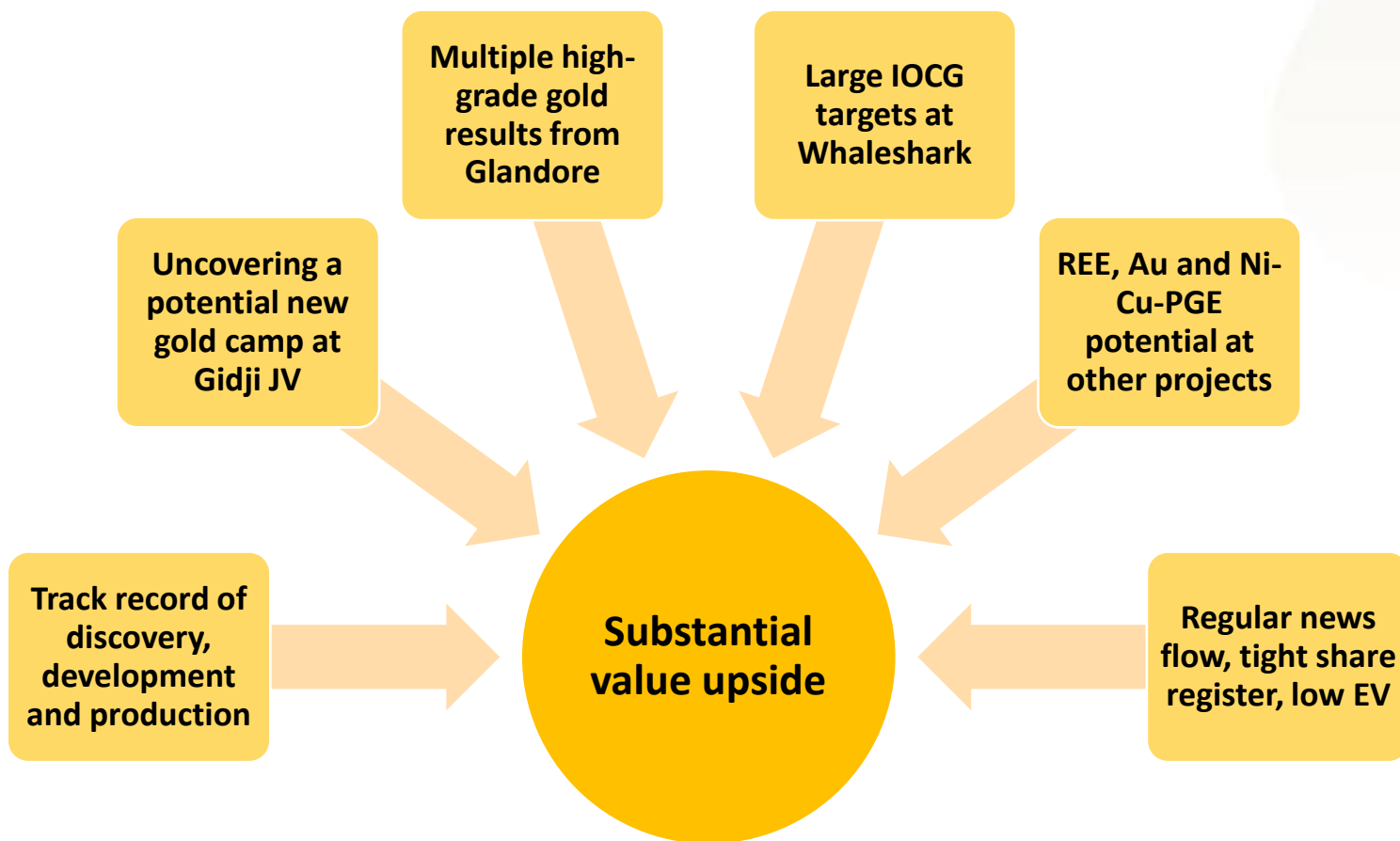
Project	Applications	Target Generation	Aircore Drilling	Bedrock Testing
GLANDORE			GLANDORE EAST	
			Island Glandore West	
GIDJI JV				MARYLEBONE 8-Mile Lake The Jog
			Blackfriars Railway Piccadilly	
		Claypan	Highway Boorara North	
WHALESHARK		IOCG targets		
BANGEMALL	Blue Bar	Dooley Downs Mt Vernon		
RANDALLS			BIF targets	
LANG WELL		REE +/- Au targets		

Aims for 2022-23 FY

- **Glandore**
 - Glandore East diamond drilling
 - Lake/land aircore drilling
- **Gidji JV**
 - RC drilling at Lake, The Jog
 - Paleochannel study
 - 8-Mile DD?
- **Whaleshark**
 - Geophysics over MMI targets
 - Follow-up aircore/DD drilling
- Test REE potential at **Lang Well**
- Follow-up drilling at **Randalls**
- Sampling/mapping at **Bangemall**



Summary

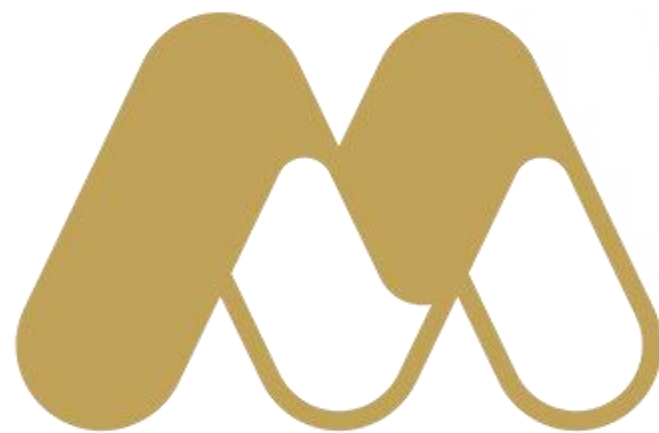


Acknowledgements

- Board members
- Employees/Contractors/Consultants
- Shareholders

THANK YOU!





miramarresources.com.au | ASX: **M2R**