



ASX: CUL

Strategic Positions in Key Mineralised Provinces

Targeting Gold / Base Metals / PGE / Lithium

Chris Ringrose, *Managing Director, Cullen Resources Limited*

Contact: 0439 843 756

ANNUAL GENERAL MEETING
11 November 2022



DISCLAIMER

IMPORTANT NOTICE

This presentation has been prepared by Cullen Resources Limited ACN 006 045 790 (Cullen) for general information purposes only. The presentation is not and should not be considered as an offer or invitation to subscribe for or purchase any securities in Cullen, or as an inducement to make an offer or invitation with respect to those securities. No agreement to subscribe for securities in Cullen will be entered into on the basis of this presentation.

FORWARD-LOOKING STATEMENTS

This presentation may contain certain forward-looking statements which have not been based solely on historical facts but rather on Cullen's expectations about future events and on a number of assumptions which are subject to significant risks, uncertainties and contingencies many of which are outside the control of Cullen and its directors, officers and advisers. Forward-looking statements include, but are not necessarily limited to, statements concerning Cullen's planned exploration program, strategies and objectives of management, anticipated dates and expected costs or outputs. When used in this document, words such as "could", "plan", "estimate", "expect", "intend", "may", "potential", "should" and similar expressions are forward-looking statements. Due care and attention has been taken in the preparation of this document and although Cullen believes that its expectations reflected in any forward looking statements made in this document are reasonable, no assurance can be given that actual results will be consistent with these forward-looking statements. This document should not be relied upon as providing any recommendation or forecast by Cullen or its directors, officers or advisers. To the fullest extent permitted by law, no liability, however arising, will be accepted by Cullen or its directors, officers or advisers, as a result of any reliance upon any forward looking statement contained in this document.

ATTRIBUTION – COMPETENT PERSON STATEMENT

Information in this presentation may reflect past exploration results, and Cullen's assessment of exploration completed by past explorers, which was first prepared and disclosed under JORC Code 2004. It has not been updated since to comply with JORC Code 2012 on the basis that the information has not changed materially since it was last reported. The information in this report that relates to Exploration Results is based on information compiled by Dr Chris Ringrose, Managing Director, Cullen Resources Limited who is a Member of the Australasian Institute of Mining and Metallurgy. Dr Ringrose is a full time employee of Cullen Resources Limited. He has sufficient experience which is relevant to the style of mineralisation and types of deposits under consideration, and to the activity which has been undertaken, to qualify as a Competent Person as defined by the 2012 edition of the 'Australasian Code for Reporting of Exploration Results, Mineral Resources and Ore Reserves'. Dr Ringrose consents to the report being issued in the form and context in which it appears. The Company confirms that it is not aware of any new information or data which materially affects the information included in this presentation.

✓ **Greenfields Explorer**

✓ **Focused in WA**

✓ **Project Generator**

✓ **JV's in WA and Finland**

Directors

Dr Chris Ringrose, *Managing Director*

Mr John Horsburgh, *Chairman*

Mr Wayne Kernaghan, *Company Secretary*

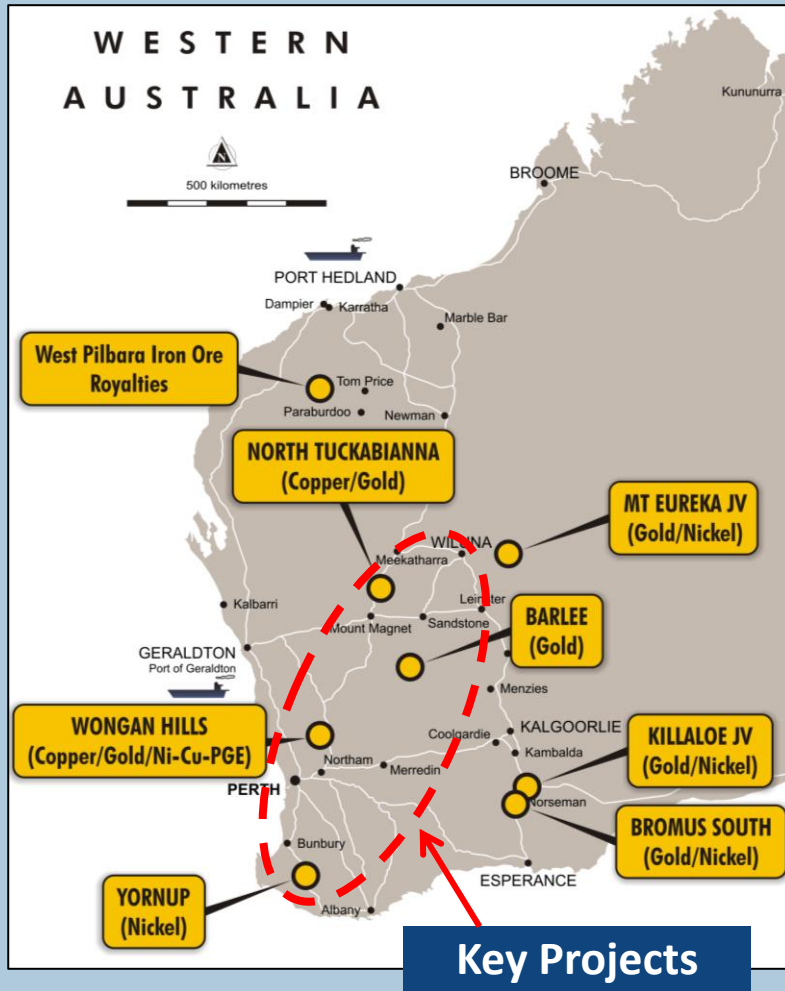
Capital

Number of Shares	487M
Cash	~\$0.3M (30/9/2022)
Market Cap	~\$6.3M (@ 1.3c)

Major Shareholders

Perth Capital + Associates	~ 10%
Directors	~ 8.5%
Top 20	~ 46%

LOCATION PLAN



PROJECTS, JV'S & ASSETS

DRILL-READY TARGETS: GOLD – BASE METALS W.A.

North Tuckabianna (100%), Cue

- Wongan Hills (90%),
West Yilgarn Province
- Barlee (100%), SE of Youanmi

PROJECT GENERATION / EARLY STAGE (100%)

- Bromus, SE W.A.
- Yornup, SW W.A.
- Central Wheatbelt,
East of Wongan Hills

CURRENT JOINT VENTURES

Mt Eureka JV,
Rox (RXL) – to 75%

- Killaloe JV,
Lachlan Star (LSA) – 80%
- Finland Projects
(Capella) – 70 -80%

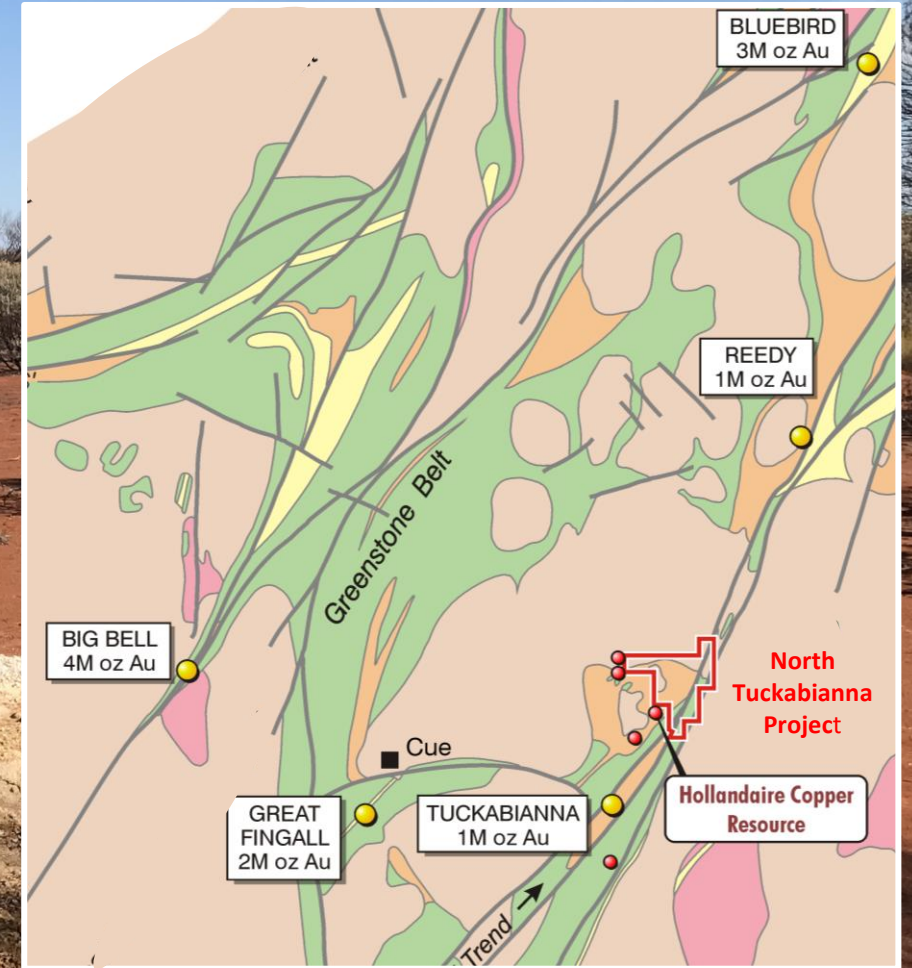
IRON ORE ROYALTIES – WEST PILBARA

Potential future cash flow from:

- Wyloo, in Fortescue's
Western Hub (*Eliwana*)
- Catho Well
Iron Ore Deposit (*API*)

NORTH TUCKABIANNA PROJECT

Murchison Gold Province, W.A.

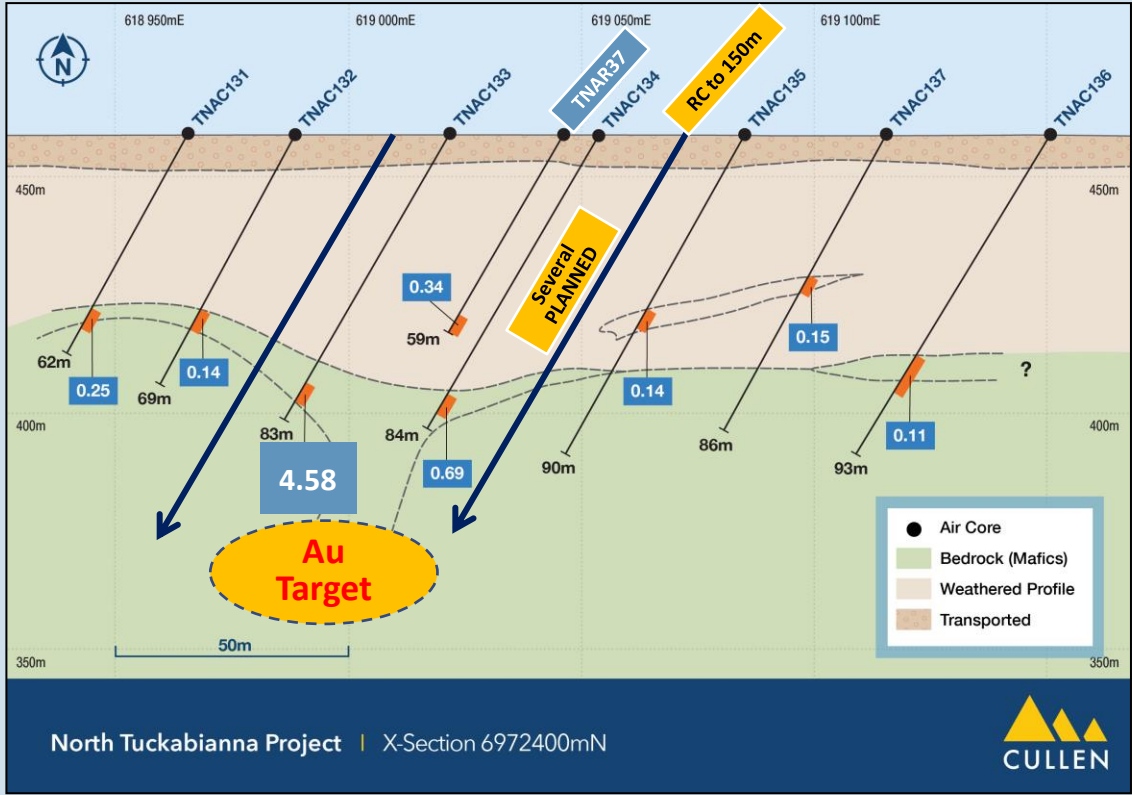


Targeting Cu-Au (Holladaire-style) & Shear Zone Au

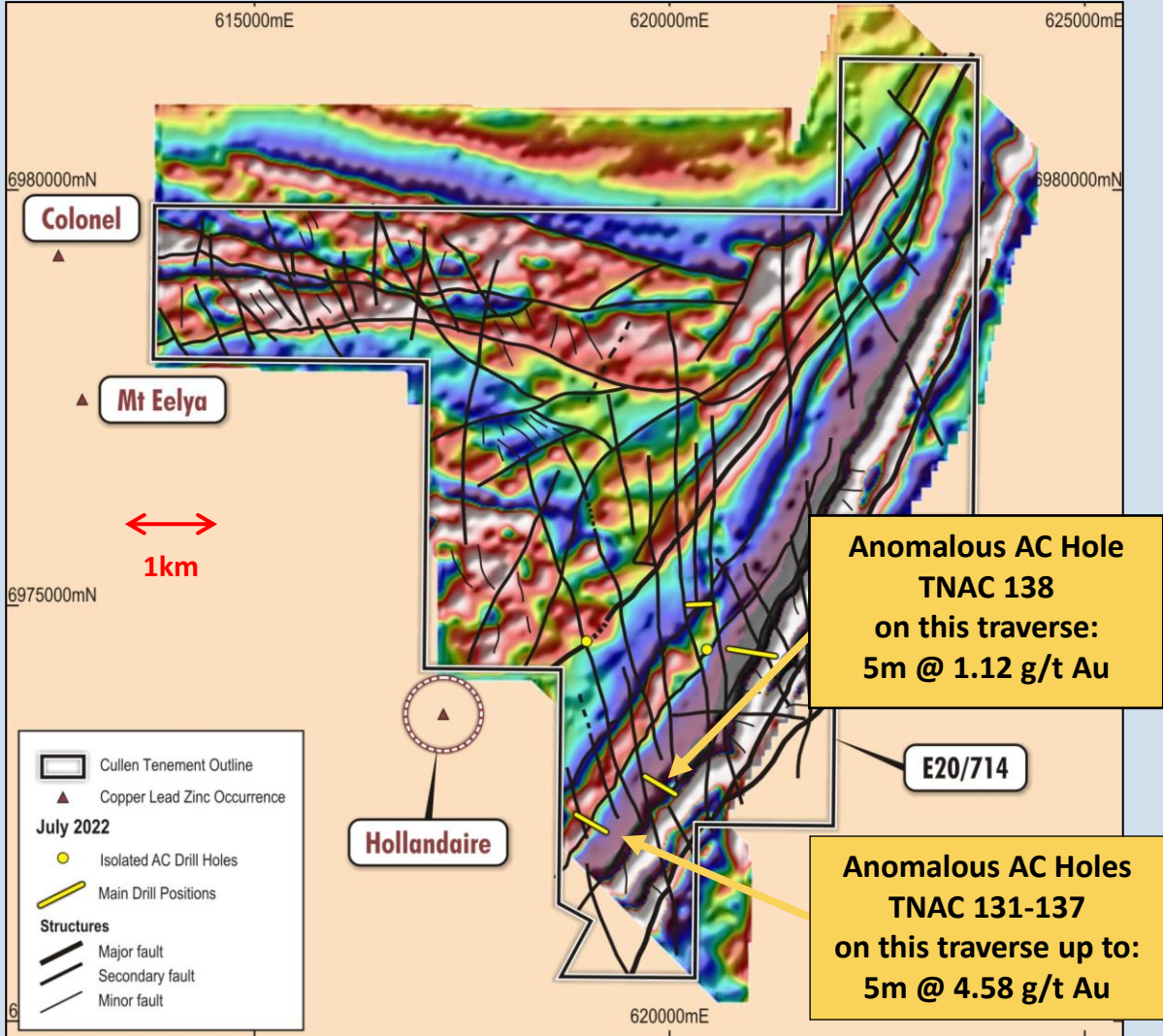
NORTH TUCKABIANNA PROJECT

~ multiple shear zones up to 10km

Broad Gold Anomaly (~150m across strata) with High-grade gold core target - Follow-up RC Planned

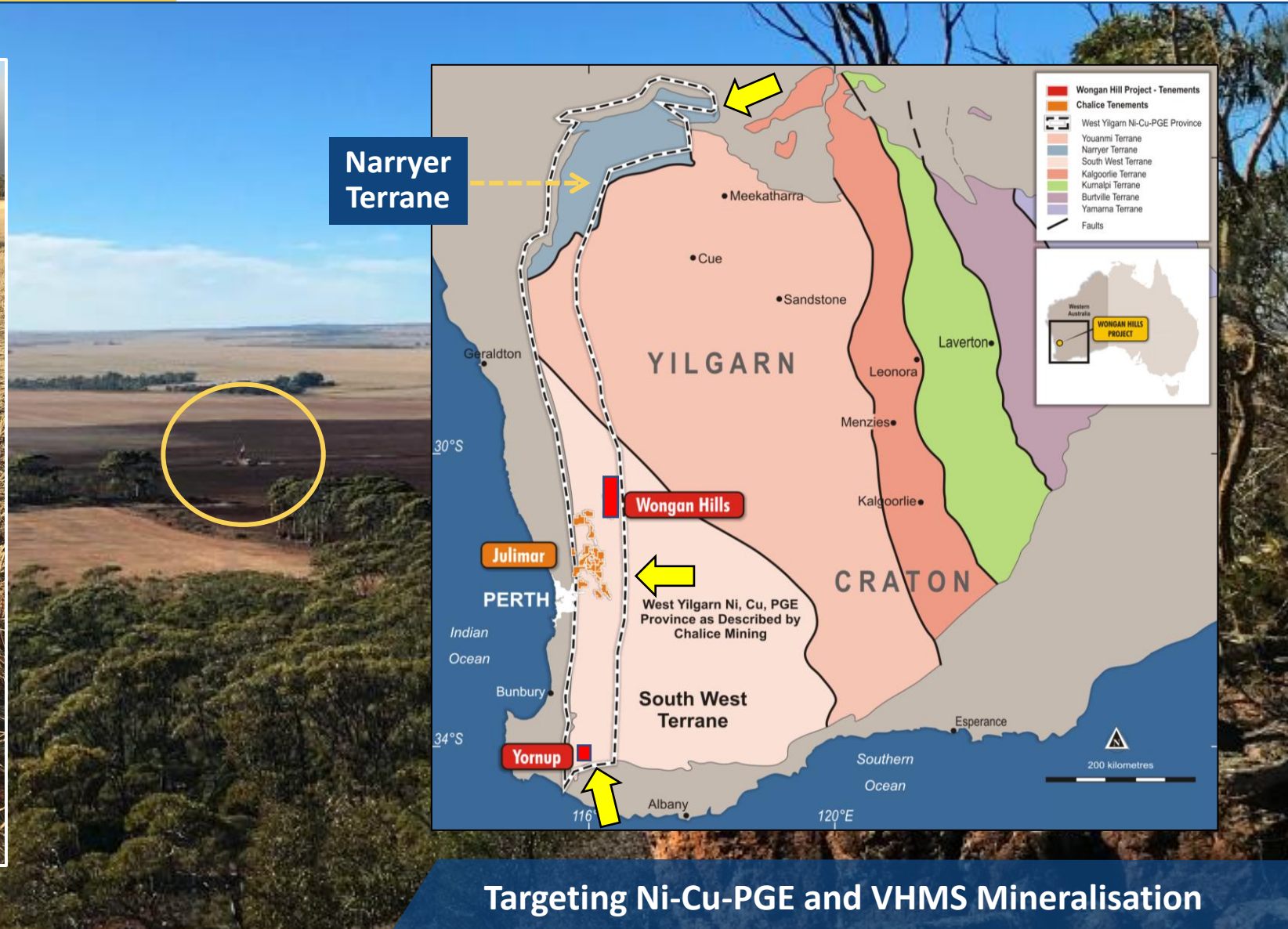


July 2022 AC drilling targeted low-grade Au anomalies below **TNAR37** and untested stratigraphy striking NE-SW:
Target Area 1 – 5m @ 4.58 g/t Au (July 2022)



WONGAN HILLS & YORNUP PROJECTS

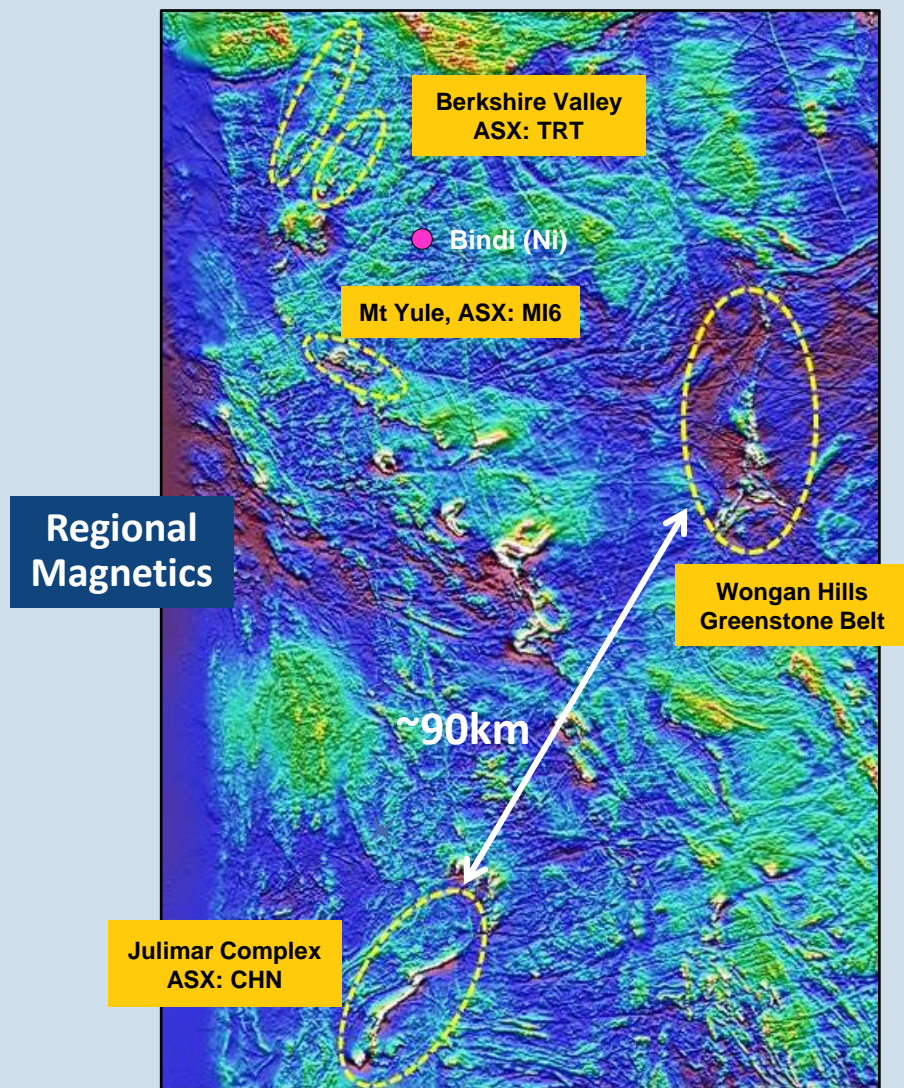
West Yilgarn Ni-Cu-PGE Province, W.A.



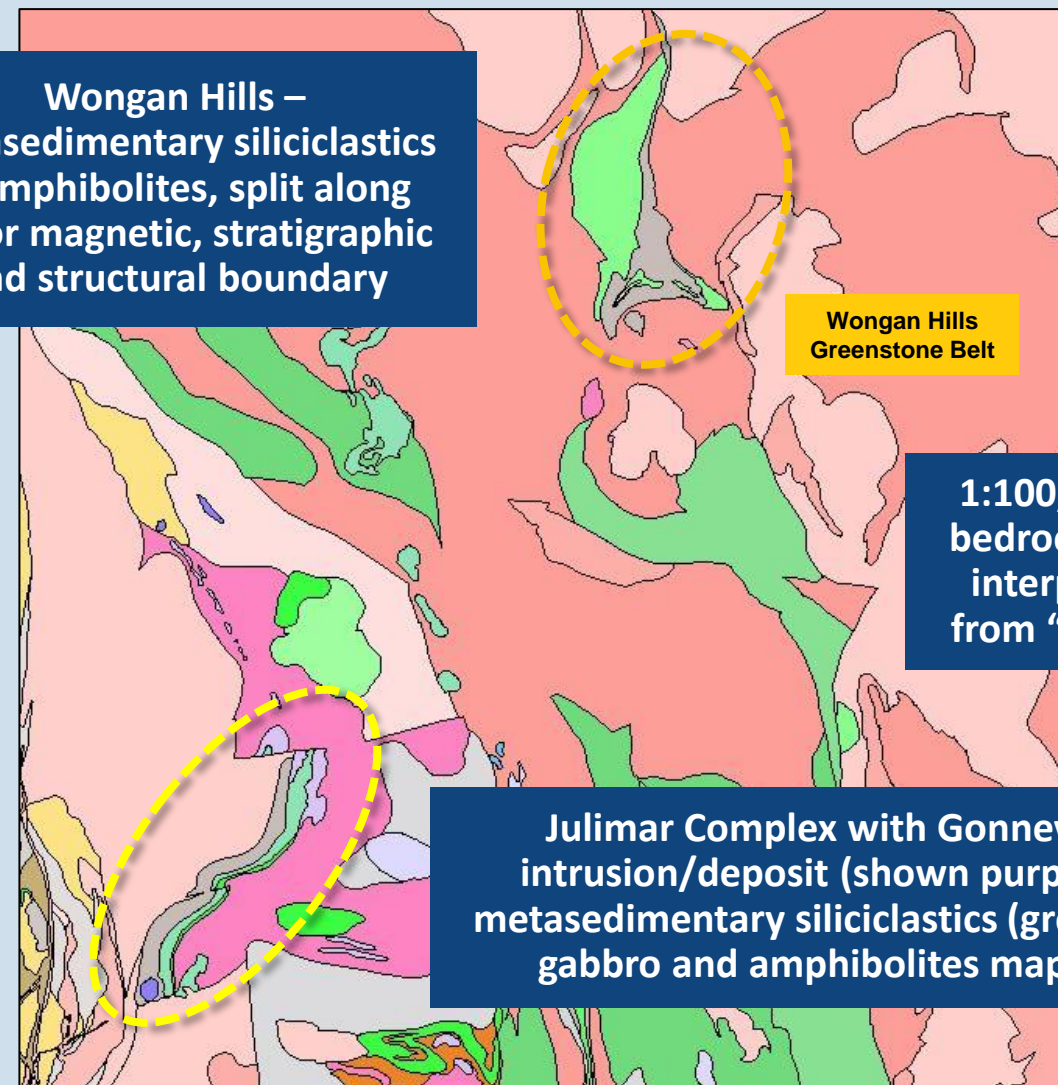
Targeting Ni-Cu-PGE and VHMS Mineralisation

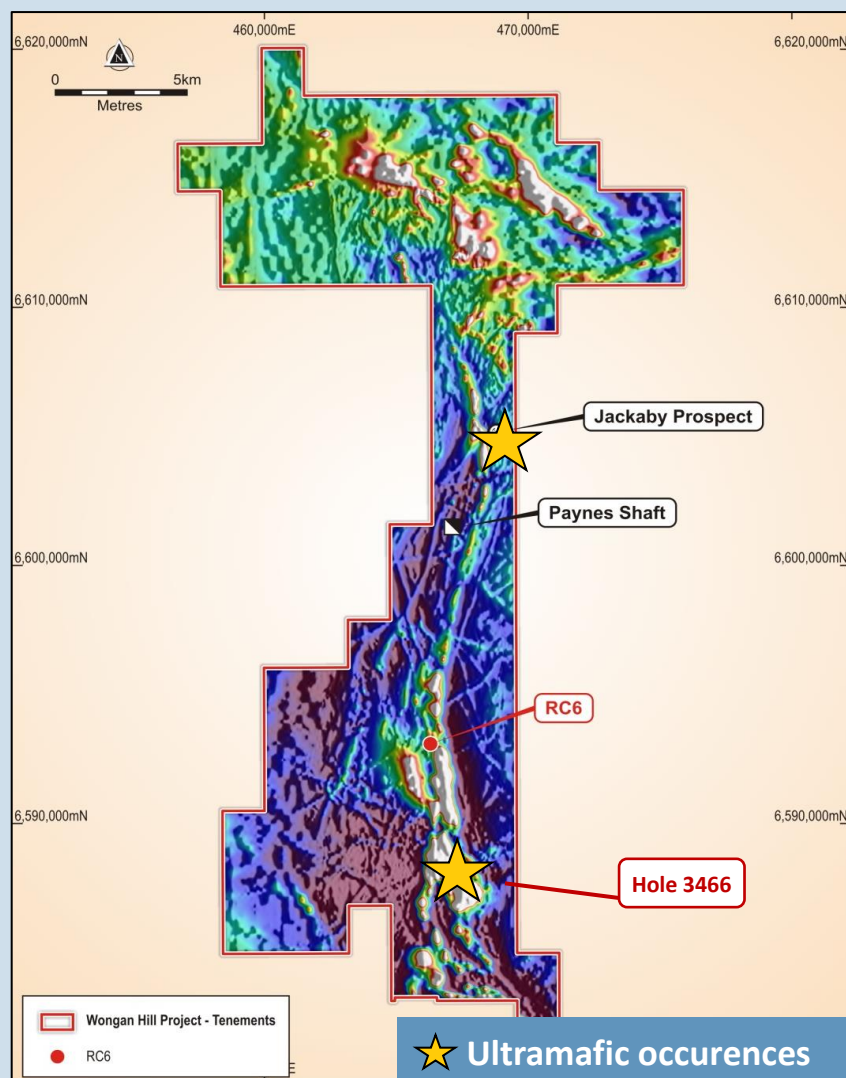
WONGAN HILLS GREENSTONE BELT

Broadly Similar Geology to Julimar Complex



Wongan Hills –
metasedimentary siliciclastics
& amphibolites, split along
major magnetic, stratigraphic
and structural boundary



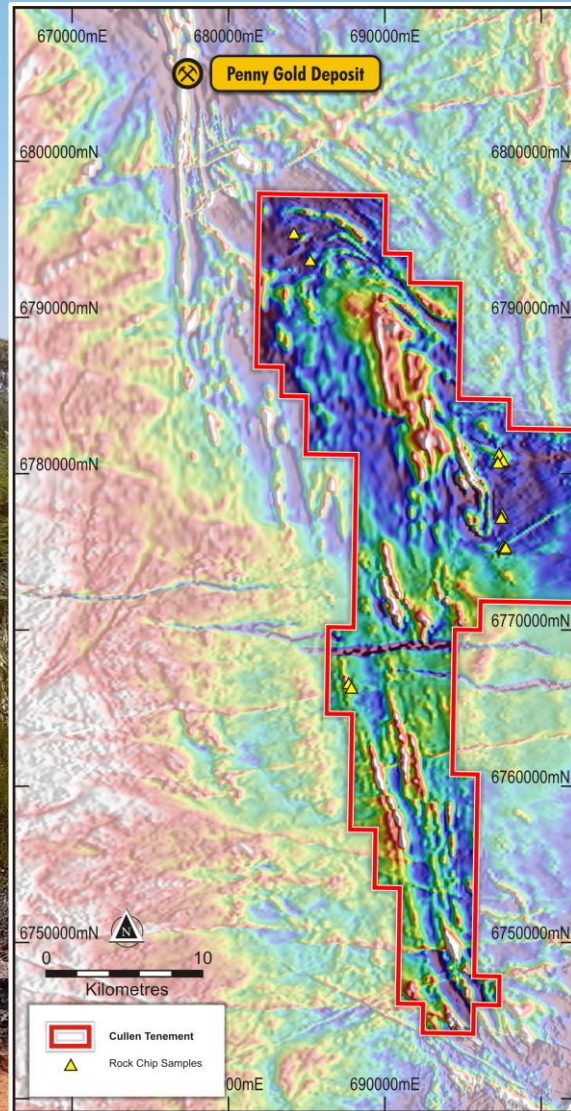


EXPLORATION LEADS TO DATE:

- **Nickel sulphides** discovered in ultramafic (Cullen's RC6) –Rupert Prospect.
- Historical **Hole 3466 – 7600ppm Ni with 2800 ppm Cr** (WAMEX A18337) – supporting the general presence of ultramafics.
- High Cu (1250ppm) and Pt (50ppb) from historical air core drilling at **Jackaby Prospect**, margin of ultramafic body.
- Cullen's RC tested ground EM conductors – so far **pyritic metasediments**.
- Historical coincident Cu, Au and Ag BLEG anomalies, and stratigraphic interpretation define **VHMS base metal targets**.

BARLEE PROJECT, YOUANMI, W.A.

~50km of strike SE of Youanmi Greenstone Belt, W.A.



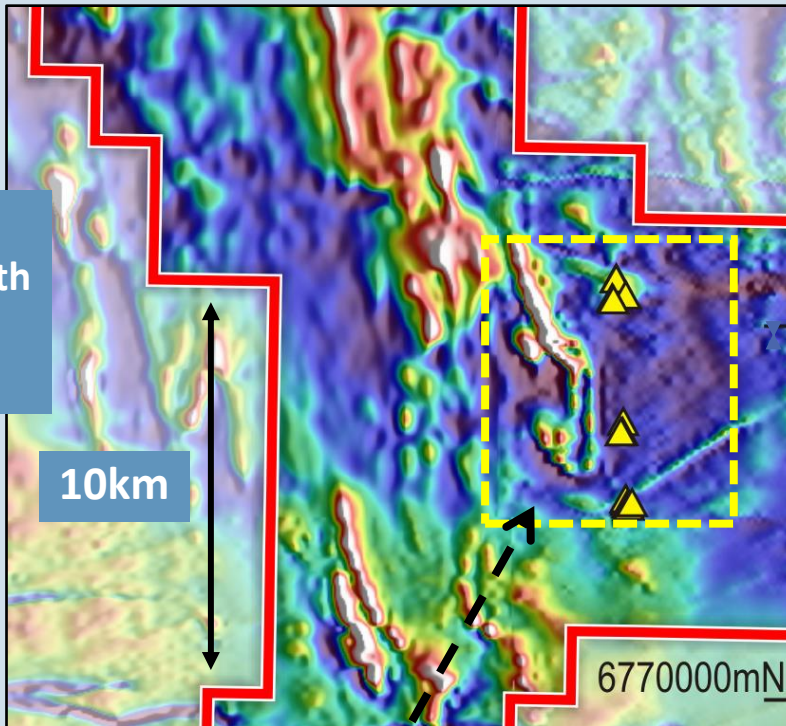
Targeting Penny-type Au & Lithium in Pegmatites

BARLEE PROJECT – YOUANMI, W.A.

Under-explored granite-greenstone Terrane for Au and Li

Magnetics Image

Large Project
~50km of strike south
east of the Penny
Gold deposit.



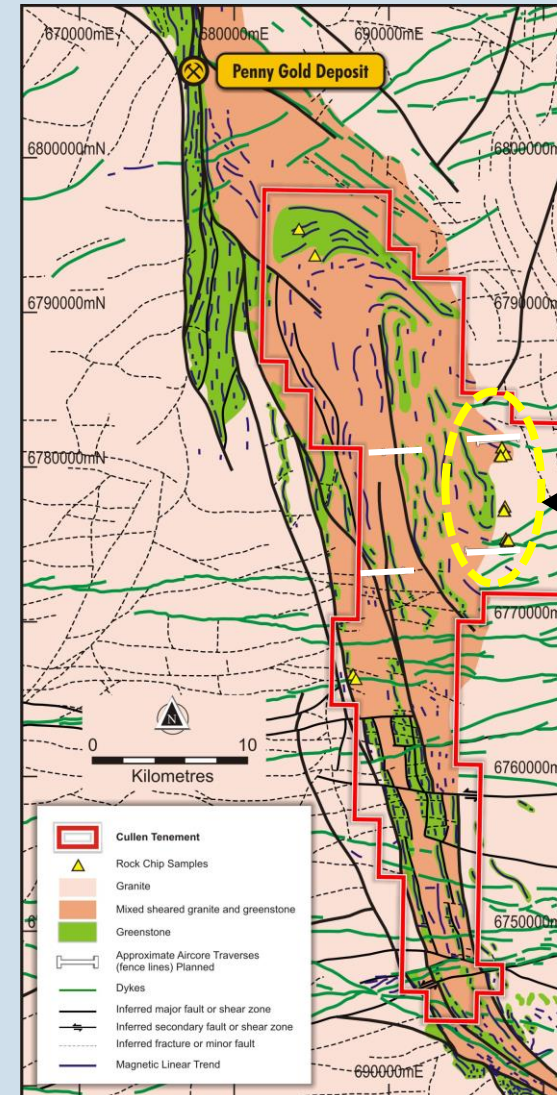
Focus area for lithium : soil
sampling/prospecting of Granite –
Greenstone contact and
around folded greenstone units.

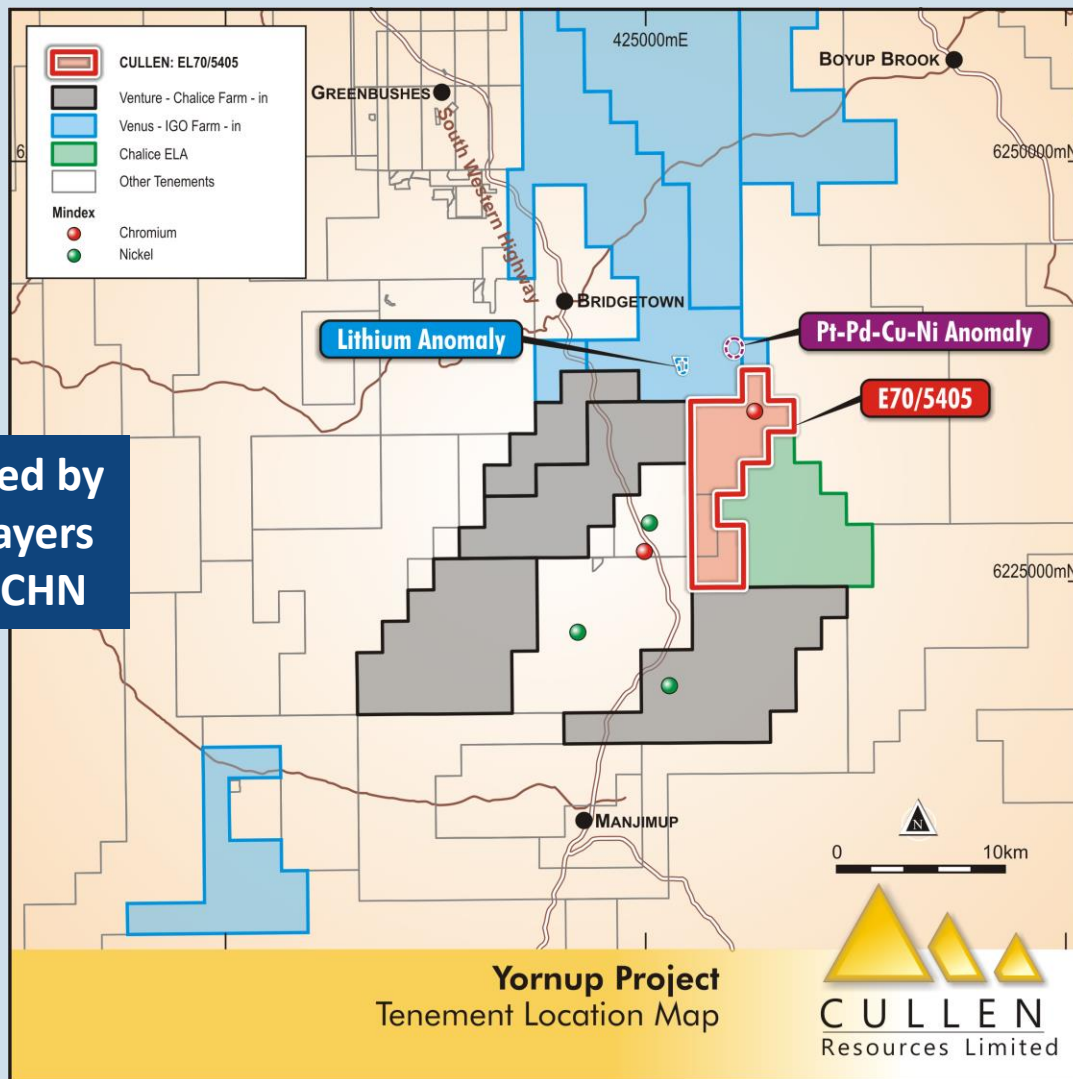
Bedrock
Interpretation

Additional air core
traverses planned for
gold and lithium.

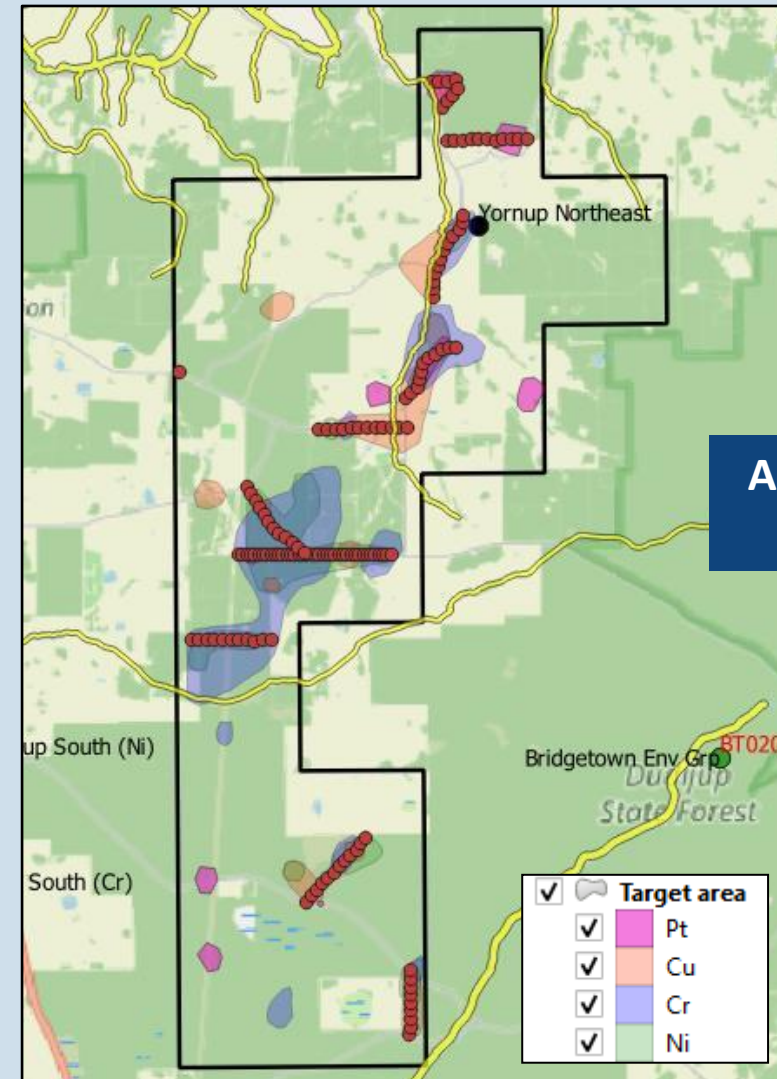
Pegmatites:
Max rock chip values
(ppm):
Li 357
Ta 105
Rb 900
Sn 50
Nb 50
Cs 12

Pegmatite
sampled

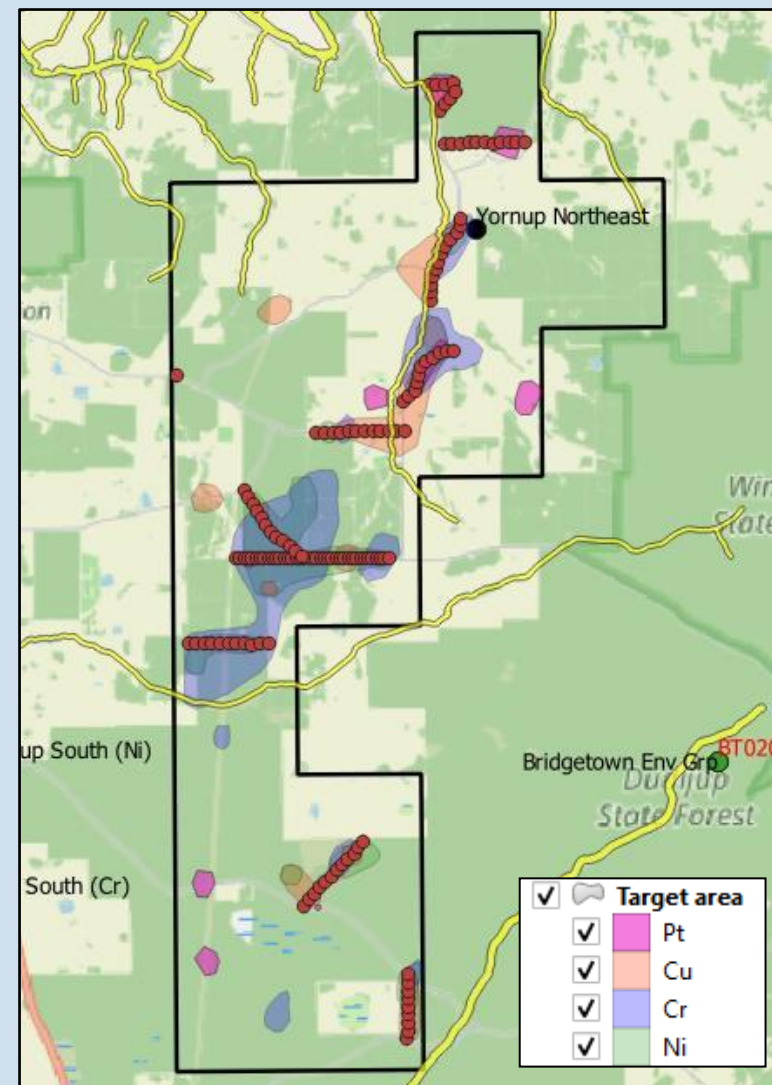
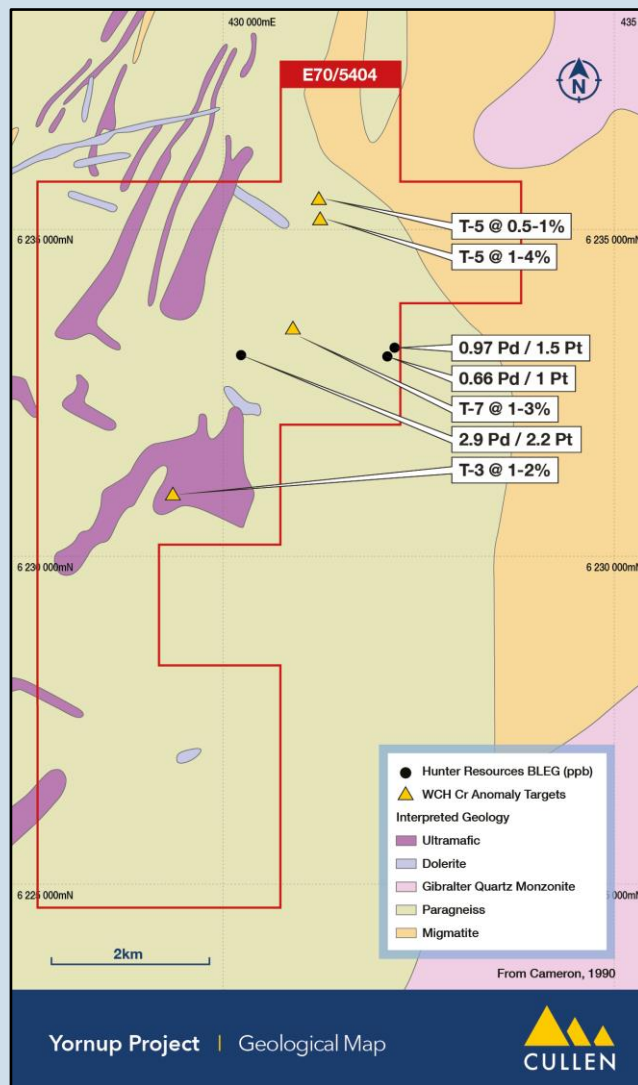




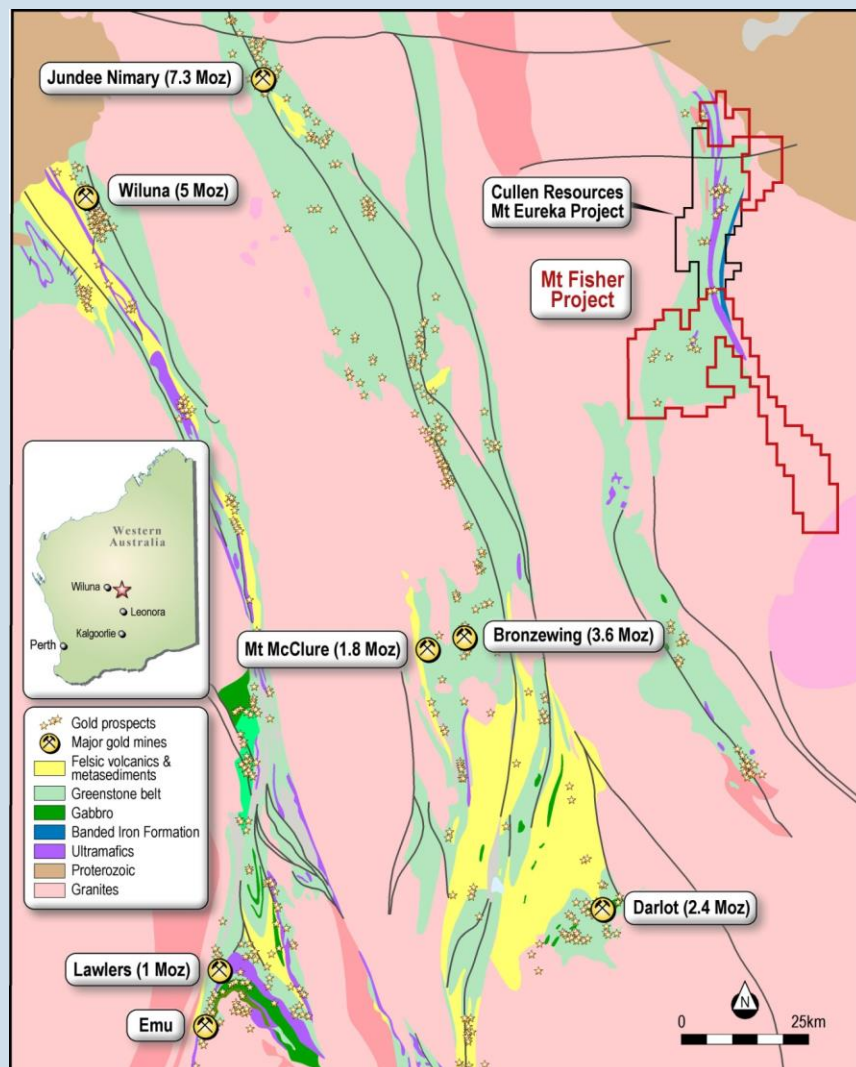
Surrounded by
Major Players
IGO and CHN



Anomalous
Cr, Ni, Cu



● Proposed Soil Sampling Traverses (November start)

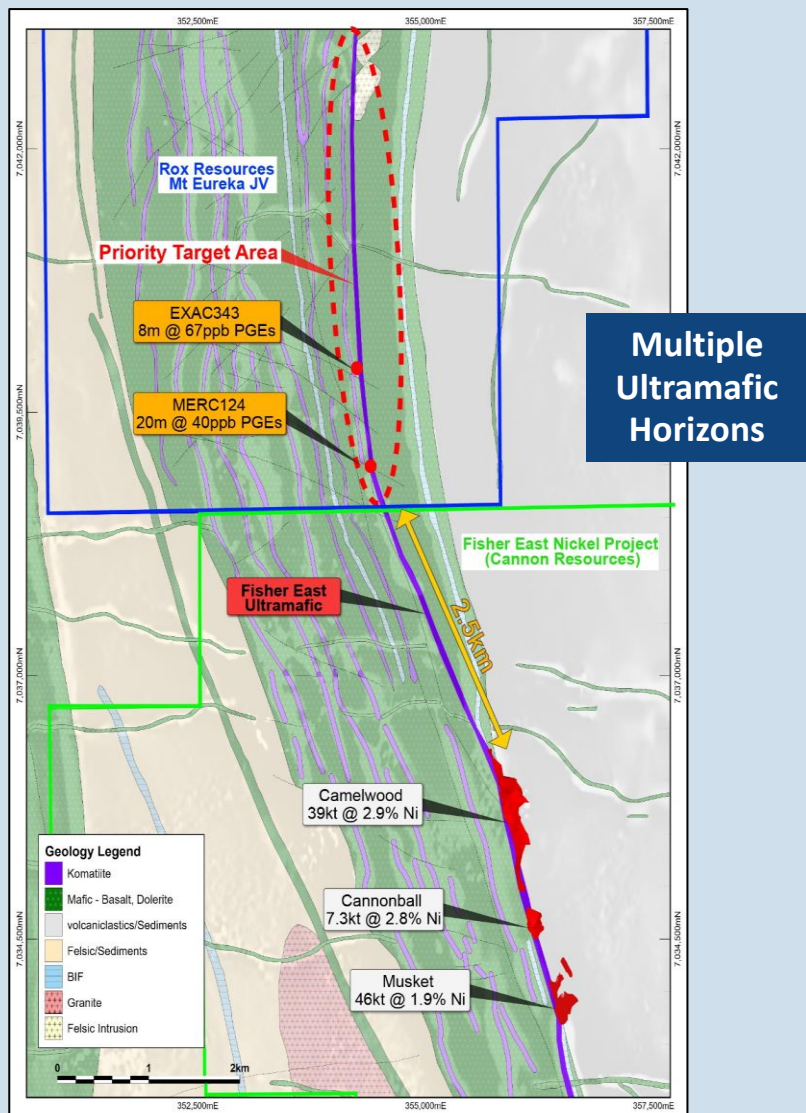


MT EUREKA PROJECT – NORTHERN EXTENSION OF ROX'S MT FISHER BELT

- Rox Resources earning up to 75%,
- Cullen 25% (free carry to PFS)

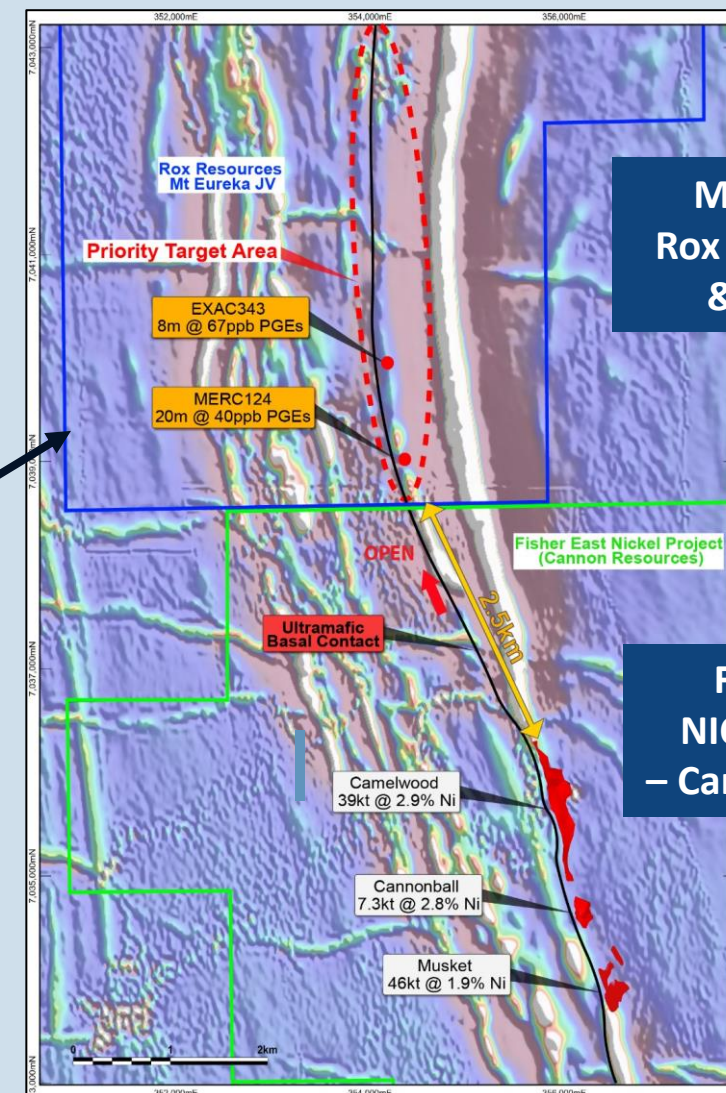
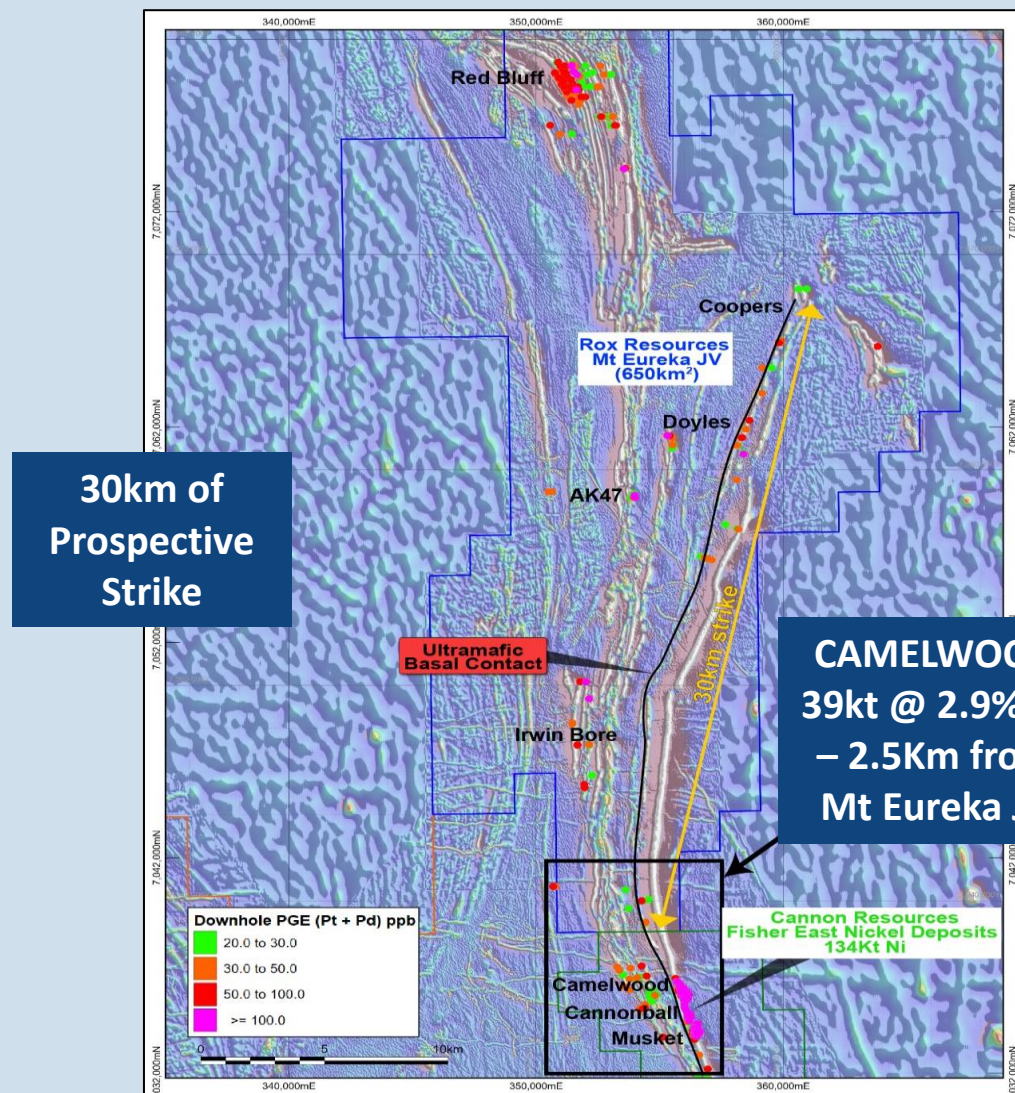
HIGH-GRADE RESULTS TO DATE (ROX) INCLUDE:

- MFRC075:
13m @ 6.81g/t Au from 45m, including
9m @ 8.89g/t Au from 47m and
4m @ 2.59g/t Au from 67m at the **Galway Prospect**
- MFRC071:
3m @ 3.96g/t Au from 35m, including
2m @ 5.52g/t Au from 35m at the **Southern Prospect**



(ASX:RXL;31-10-22)

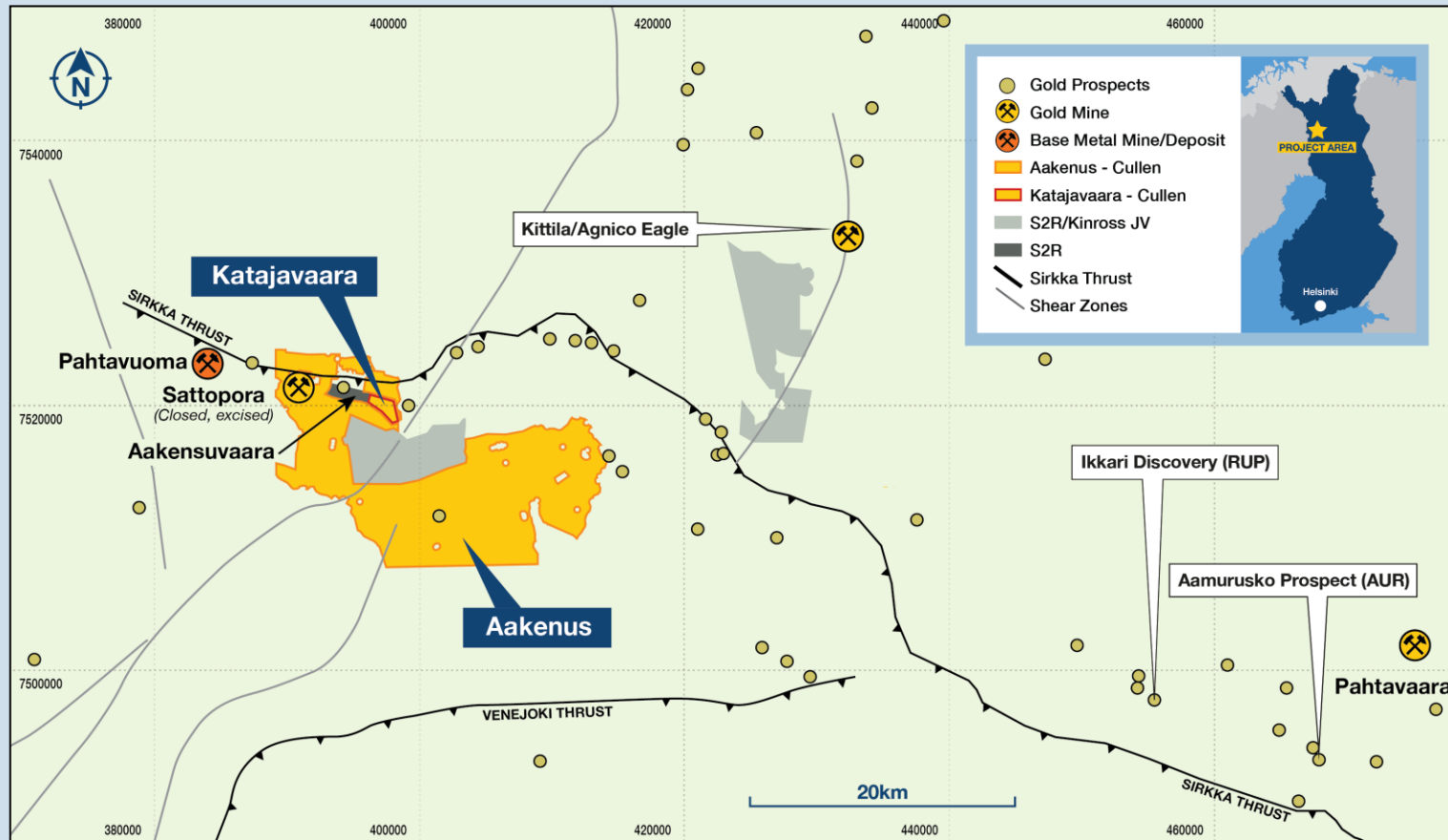
- New high resolution aeromagnetic data and associated nickel sulphide pathfinder geochemistry in regolith (platinum and palladium) defines the extension of the fertile Fisher East ultramafic basal contact position from Cannon's tenure onto the Mt Eureka tenure.
- The Fisher East Nickel deposits are typical Archaean komatiite-associated deposits with affinities to Kambalda-style, Type 1 massive sulphide ores.
- Only minimal historical work has been completed along the highly prospective interpreted basal contact on the Mt Eureka JV tenements.
- Numerous ultramafic flows with associated Ni-Cu-PGE anomalism occur throughout the JV area with further potential to host economically viable nickel deposits.



MT EUREKA JV
Rox Resources 75% & Cullen 25%

FISHER EAST NICKEL PROJECT
– Cannon Resources

Central Lapland Greenstone Belt for Cu-Au



TARGETS INCLUDE:

- Potential extensions to Outokumpu's Saattopora former gold-copper mine, and to S2 Resources (ASX:S2R) Aakenusvaara gold project.
- Killero: copper-gold anomaly, from historical Base of Till ("BoT") drilling by Anglo American.
- Riikonkoski-Lonnakko-Kangas: cluster of copper occurrences on the eastern boundary of the Aakenus Project.
- **JV manager Capella Minerals Limited (TSXV:CMIL; FRA:N7D2).**

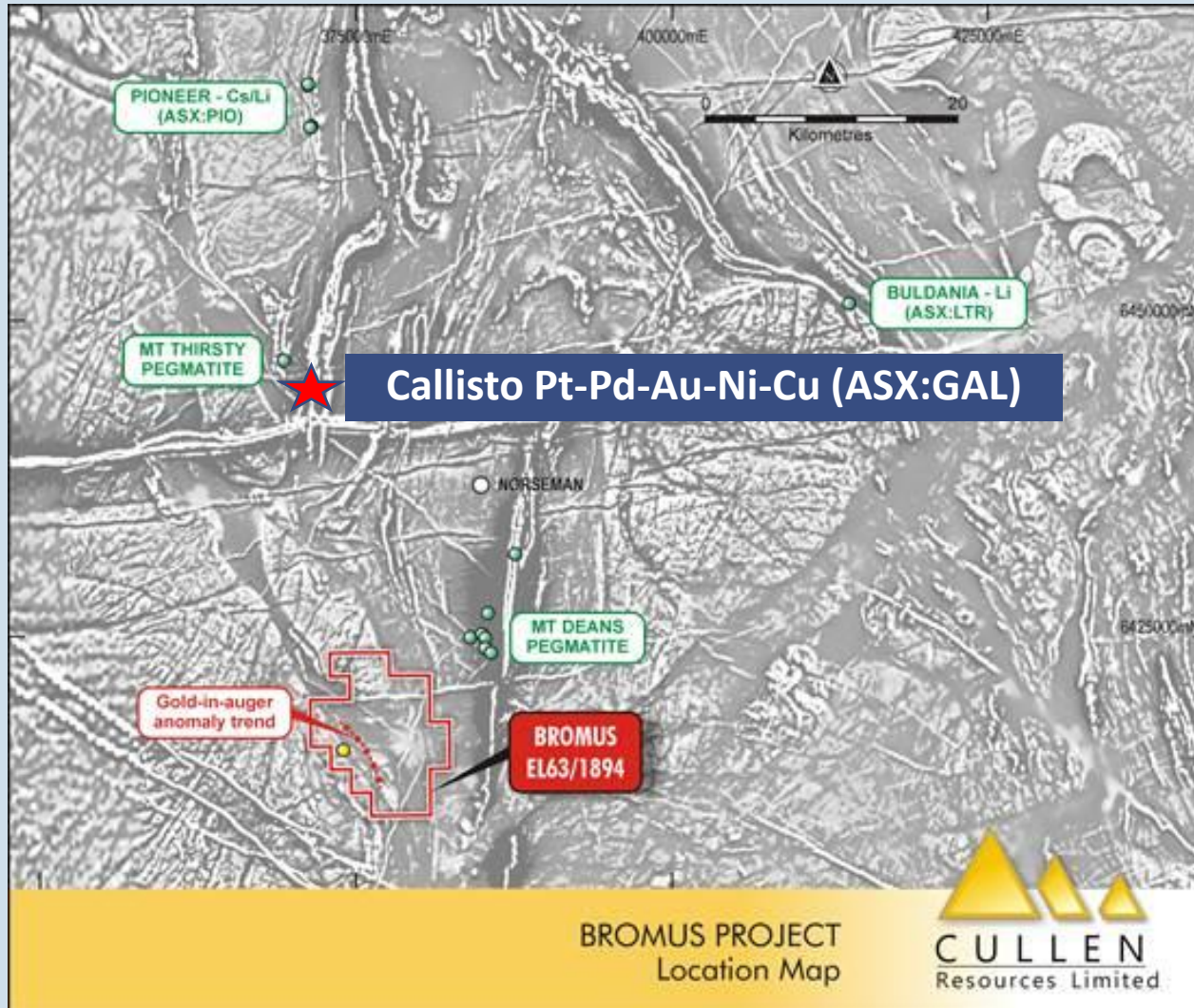
Capella 70-80% , Cullen free carried to PFS



- Cullen Finland Oy (owned 70:30 by Capella and Cullen) holds **Perho Reservation** (~50 sq km).
- Old quartz – feldspar –? (lithium) mines (Viitaniemi, Juuraako) are excised from Perho but it includes the lithium occurrence at Seppälä.
- >70 pegmatite dykes, enriched in B, Be, Li, Nb, Sn and Ta, are reported from the area (Eilu 2012, Lahti 1981, Aviola 2004).
- Little modern systematic exploration for lithium deposits has been undertaken in the area.
- JV manager Capella Minerals Limited (TSXV:CMIL; FRA:N7D2) funding.

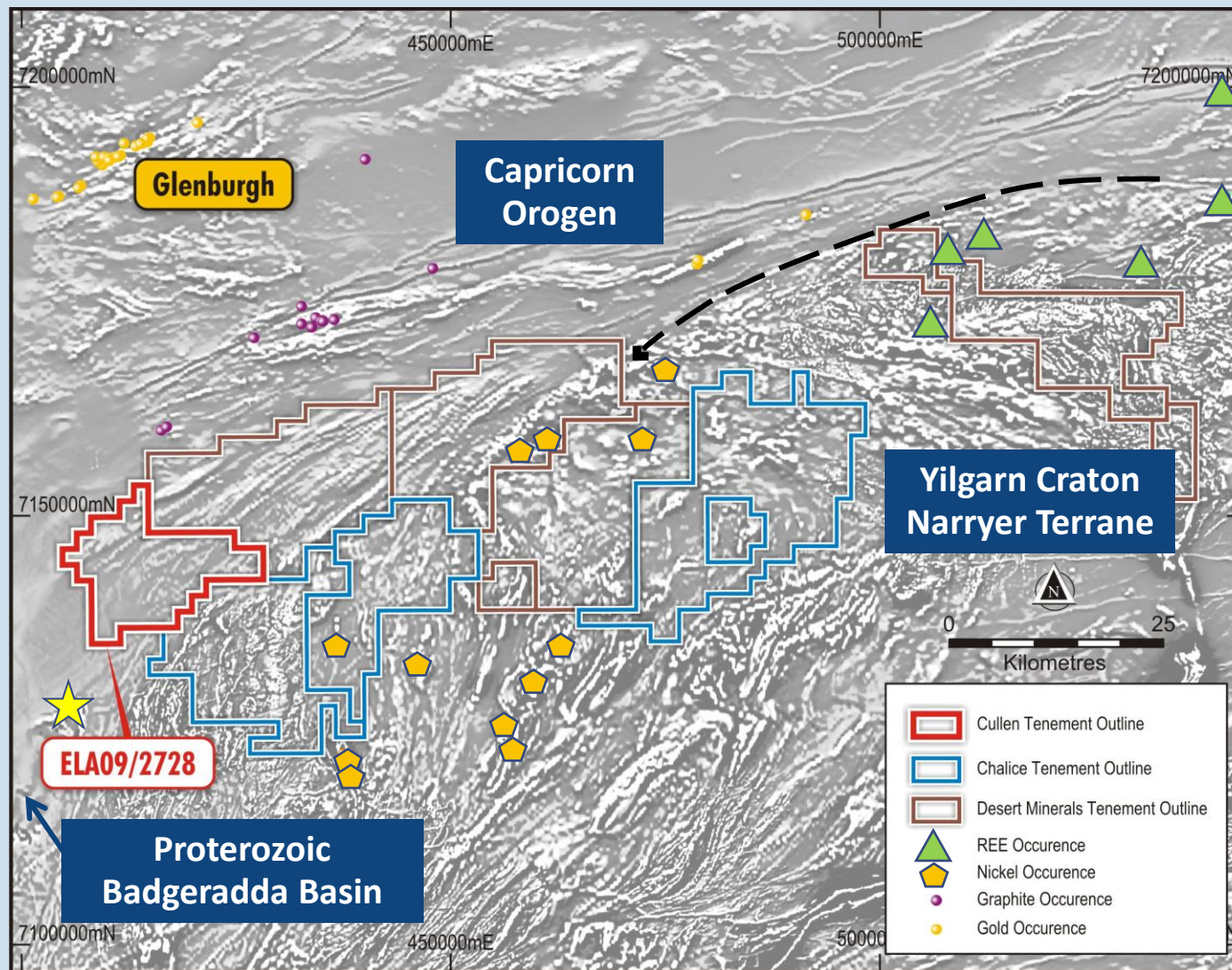
Eräjärvi Lithium-Cesium-Tantalum (“LCT”) Pegmatite Field

Avioli, R. 2004, Oriveden Seppälä-Vittaniemi alueen pegmatiittitutkimus. Geological Survey of Finland, Report M19/2141/2004/1/85. 9p. 60 app. (In Finnish).
 Eilu, P.(ed.) 2012. Geological Survey of Finland, Special Paper 53,224.
 Lahti, S.I. 1981, On the granitic pegmatites of the Eräjärvi area in Orivesi, southern Finland. Geological Survey of Finland, Bulletin 314, 82p.



TARGETING: GOLD, LITHIUM IN PEGMATITES & Ni-Cu-PGE IN ULTRAMAFICS

- Cullen's Bromus Project lies on-strike to the south of known nickel prospects, has an untested historical gold-in-auger anomaly and is considered by Cullen to be prospective for lithium in pegmatites around domal granites and along granite-greenstone contacts.
- The tenement has had only very sparse drilling through the extensive cover sequence to bedrock.



Region focus of exploration for REE, Nickel, Graphite and Gold

Large tenement area adjoining to the south of ELA09/2728 subject of IGO Ltd -Buxton JV.

★ Including Airborne EM anomaly, Bandito Prospect (ASX:BUX;13-10-22)