

16 November 2022

ANDOVER WEST UPDATE

Highlights

- **Drilling of priority EM conductor anomalies at Andover West anticipated to commence early December subject to heritage clearance**
- **Downhole EM surveys to be conducted after each hole is drilled**
- **Reconnaissance work to identify lithium-bearing pegmatites on Andover West tenement is continuing**

Errawarra Resources Ltd (ASX:ERW) (**Errawarra** or the **Company**) is pleased to provide this update on its exploration activities at the Company's Andover West nickel project in Western Australia's Pilbara region to shareholders.

ANDOVER WEST PROJECT

Nickel Potential

As recently announced on 20 September 2022¹ and 13 October 2022², the Company has commenced ground exploration activities on the Andover West Nickel project. Ground FLEM (fixed loop electromagnetic) surveying is underway with expected completion around 20 November. Interpretation and modelling of the survey data is being undertaken by the company's technical consultants Newexco as it comes to hand.

The Company is working with the Ngarluma Aboriginal Corporation to complete follow-up heritage clearance surveying focussed on planned drill pads and associated access tracks. These pre-drilling surveys are anticipated to be completed by the end of November.

Subject to completion of the heritage surveys, diamond core drilling is anticipated to commence on the first of three priority EM conductor anomalies in early December. On the completion of each drill hole targeting modelled EM conductor plates, DHEM (downhole electromagnetic) surveys will be conducted. The purpose of these surveys is to potentially identify conductive massive sulphide accumulations which can be targeted in follow-up drill holes.

Andover West covers an area of 110km² in a favourable geological setting for nickel, close to Azure Minerals' Andover Project, which hosts a Mineral Resource of 4.6Mt @1.11% Ni, 0.47% Cu and 0.05% Co³.

Lithium Potential

As has been seen from the work reported by Azure⁴, spodumene-bearing pegmatites are present within Azure's adjoining Andover tenement and Errawarra is of the opinion that similar pegmatites may also occur at Andover West. In conjunction with the work program focusing on the nickel targets, the Company has conducted reconnaissance work aimed at identifying the occurrence of lithium-bearing pegmatites on its tenement.

¹ ASX Announcement Errawarra Resources Ltd, 20 September 2022, Nickel Exploration Commences at Andover West

² ASX Announcement Errawarra Resources Ltd 13 October 2022 Andover West Work Continues and Errabiddy Come to Focus

³ Azure Minerals Limited ASX announcement 30 March 2022 "Azure Delivers Maiden Mineral Resource for Andover"

⁴ Azure Minerals Limited ASX announcement 12 October 2022 Lithium-Bearing Pegmatites Discovered at Andover

This initial focus has included the inspection and sampling of a Geological Society of Western Australia (GSWA) mapped occurrence of "metamorphosed pegmatite" which comprises intermittent lenticular dyke occurrences up to several metres in width. Characteristic pegmatite textures have been observed associated with some of these dyke occurrences. Several of these southwest striking bodies were sampled and the samples have been dispatched to Australian Laboratory Services laboratory in Perth for analysis. Results will be reported when they come to hand.

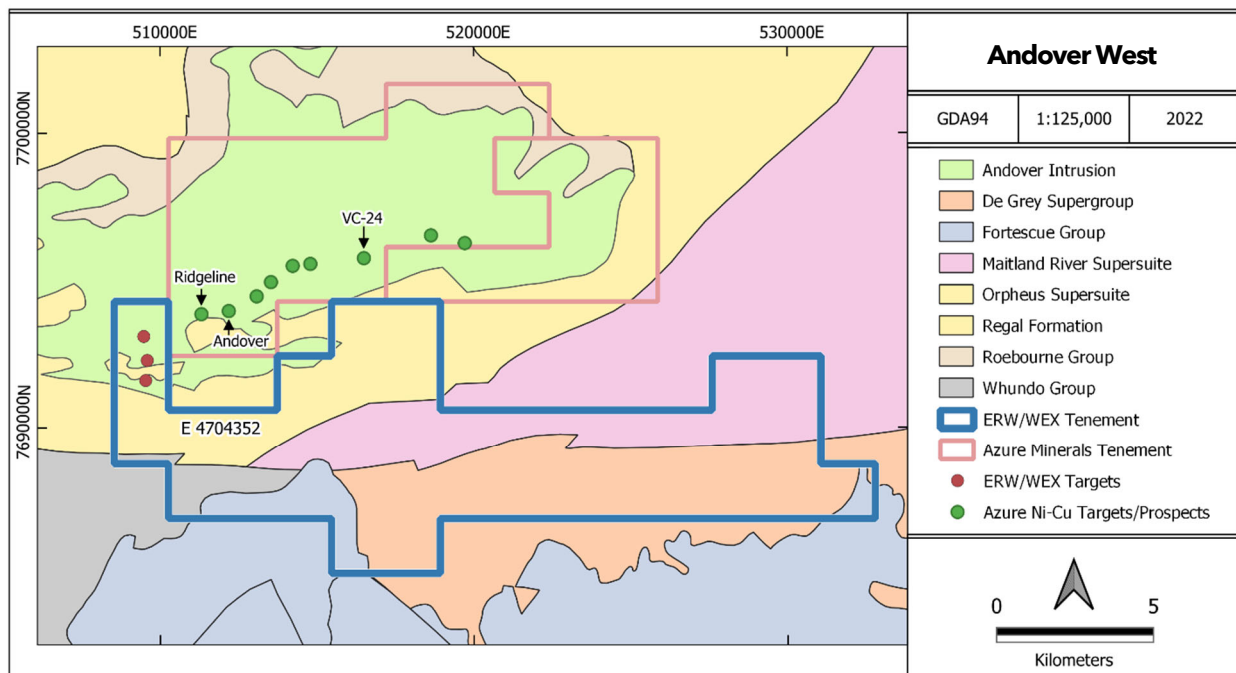


Figure 1. Andover West Nickel Prospectivity

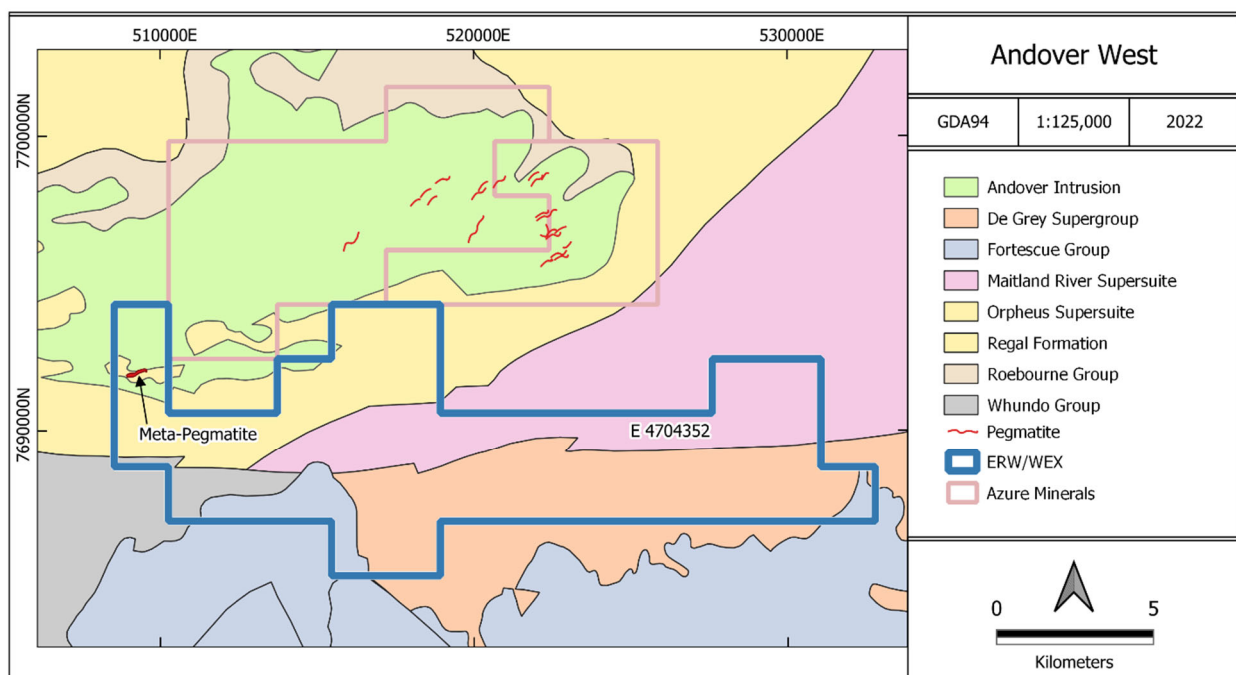


Figure 2. Andover West Pegmatite Prospectivity



Figure 3. Outcrop of Pegmatite dyke

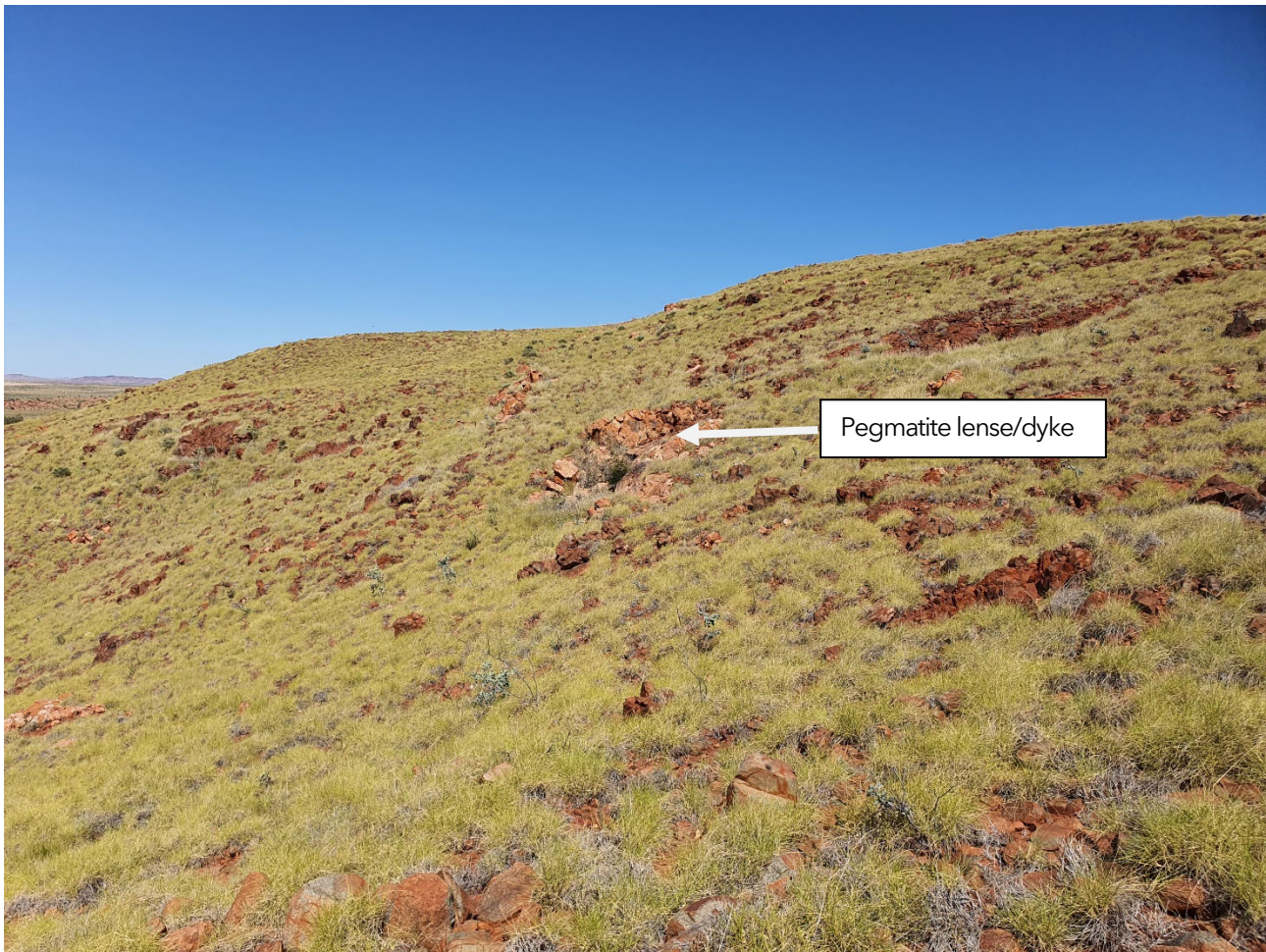


Figure 4. Southwest trending intermittent pegmatite lenses/dykes

-ENDS-

This ASX announcement has been authorised for release by Thomas Reddicliffe, Executive Director on behalf of the Board of Errawarra.

For further information, please contact:

Tom Reddicliffe
Executive Director
Errawarra Resources Ltd
E: info@errawarra.com
T: +61 8 9322 3383

Competent Person Statement

Thomas Reddicliffe, BSc (Hons), MSc, a Director and Shareholder of the Company, is a Fellow of the AUSIMM, and has sufficient experience which is relevant to the style of mineralisation and type of deposit under consideration to qualify as a Competent Person as defined in the 2012 edition of the 'Australasian Code for Reporting of Exploration Results, Mineral Resources and Ore Reserves'. Thomas Reddicliffe consents to the inclusion in the report of the information in the form and context in which it appears.