

**MIRAMAR**  
RESOURCES LTD.

# Miramar Resources Ltd

*“Creating shareholder value through discovery”*

**RIU RESURGENCE CONFERENCE  
23-24 NOVEMBER 2022**

**ASX: M2R**

# Disclaimer/Competent Person Statement

## Forward-Looking Statements

Statements in this presentation which are not statements of historical facts, including but not limited to those relating to the proposed transactions, are forward-looking statements. These statements instead represent management's current expectations, estimates and projections regarding future events.

Although management believes the expectations reflected in such forward-looking statements are reasonable, forward-looking statements are based on the opinions, assumptions and estimates of management at the date the statements are made and are subject to a variety of risks and uncertainties and other factors that could cause actual events or results to differ materially from those projected in the forward-looking statements. Accordingly, investors are cautioned not to place undue reliance on such statements.

## Competent Person Statement

The information in this report that relates to Exploration Targets or Exploration Results is based on information compiled by Allan Kelly, a “Competent Person” who is a Member of The Australian Institute of Geoscientists. Allan Kelly is the Executive Chairman of Miramar Resources Ltd. He is a full-time employee of Miramar Resources Ltd and holds shares and options in the company.

Allan Kelly has sufficient experience that is relevant to the style of mineralisation and type of deposits under consideration and to the activity being undertaken to Qualify as a “Competent Person” as defined in the 2012 Edition of the ‘Australasian Code for Reporting of Exploration Results, Mineral Resources and Ore Reserves’. Allan Kelly consents to the inclusion in this presentation of the matters based on his information and in the form and context in which it appears.

Information on historical results for all projects within this presentation, including JORC Table 1 and 2 Information, is included in the Miramar Resources Limited Prospectus dated 4 September 2020.

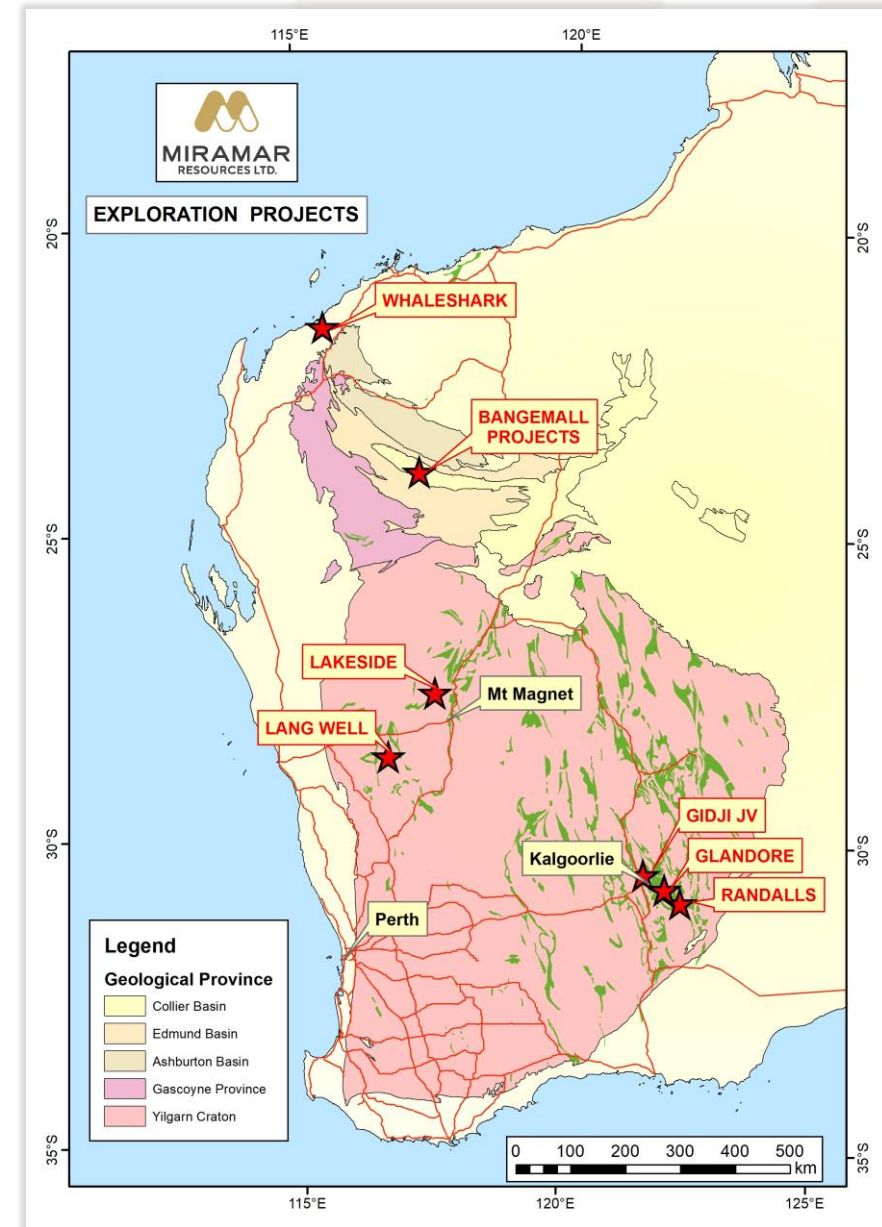
JORC Table 1 and 2 Information for Miramar results for all projects within this presentation are included in the relevant ASX releases.



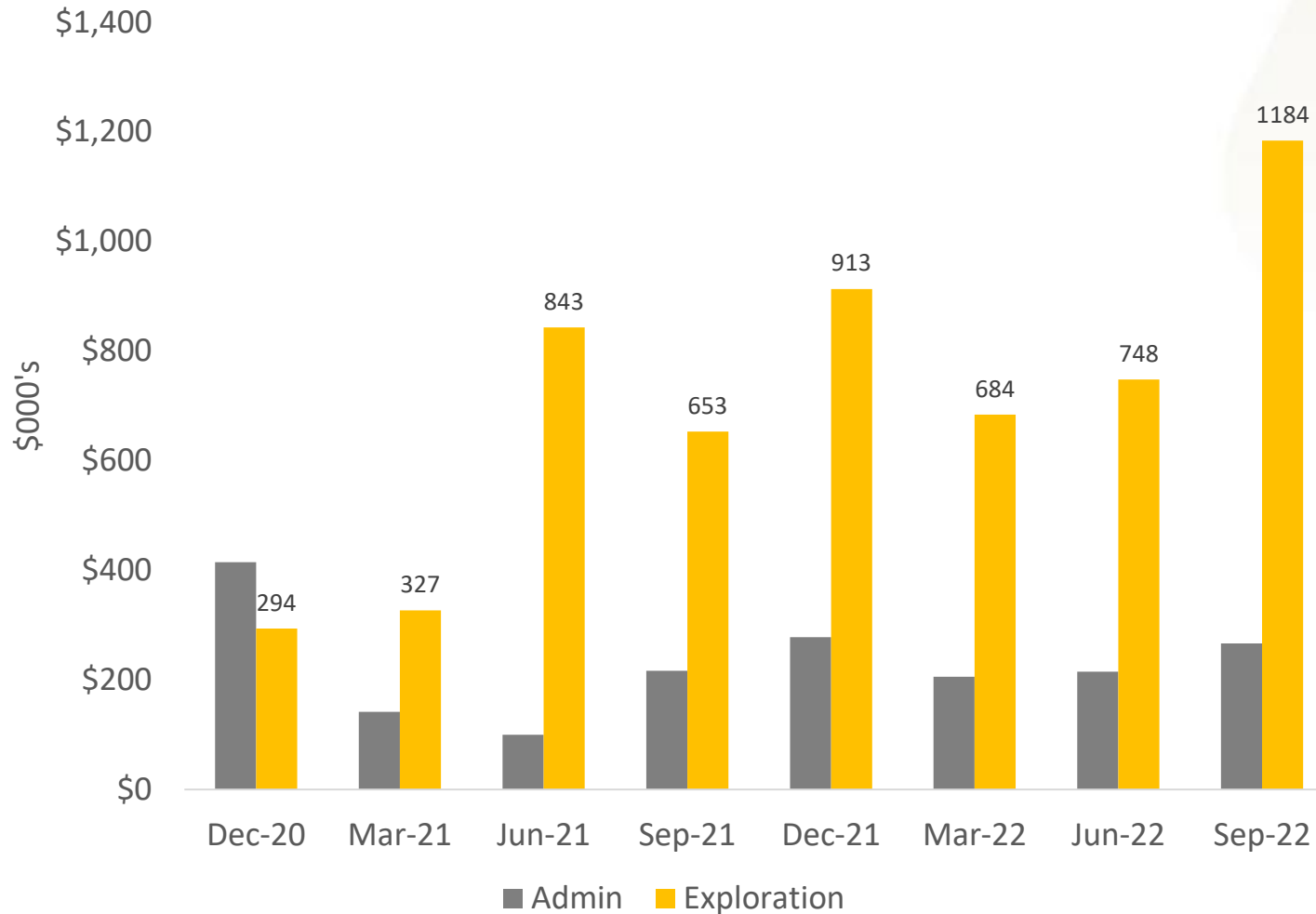
# Miramar Resources - Investment Highlights

## Active WA-focused exploration company

- High-grade **gold** in **Glandore** drilling
- Potential new **gold** camp at **Gidji JV**
- Large **IOCG** targets at **Whaleshark**
- **Bangemall** - strategic land position within Gascoyne – **REE/Ni-Cu-PGE** potential
- **Board track record** of discovery, development and production
- **Regular news flow** from **active exploration** across **multiple projects**
- Tight share register, **low EV**



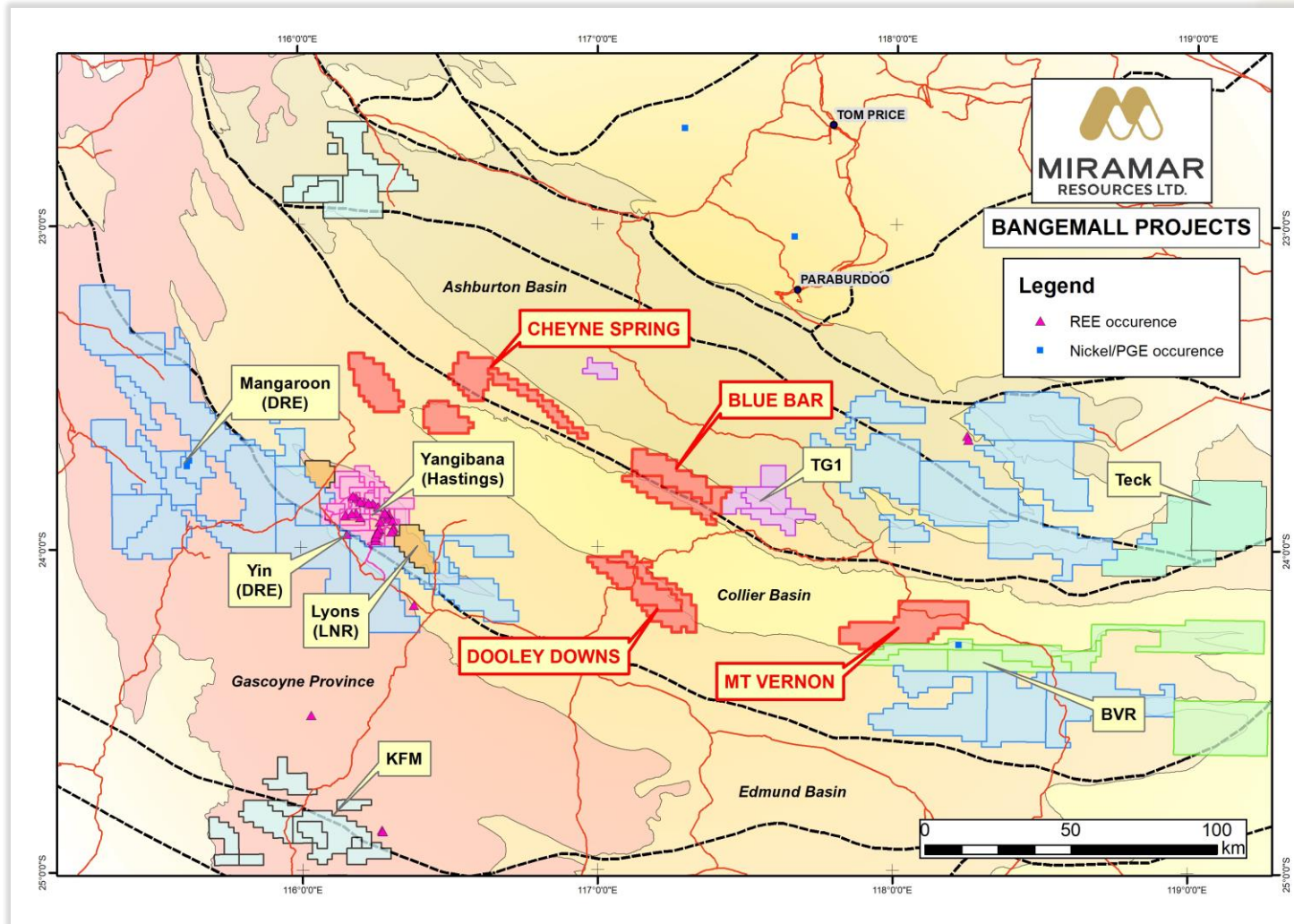
# Spending money on the ground...



Since listing in Oct 2020

- ~75% of cashflow on active exploration programmes
- 1,206 aircore holes (59,742m)
- 28 RC holes (4,277m)
- 11 DD holes (~2,500m)
- Multiple geophysical and geochemical surveys

# Bangemall – first mover in emerging region

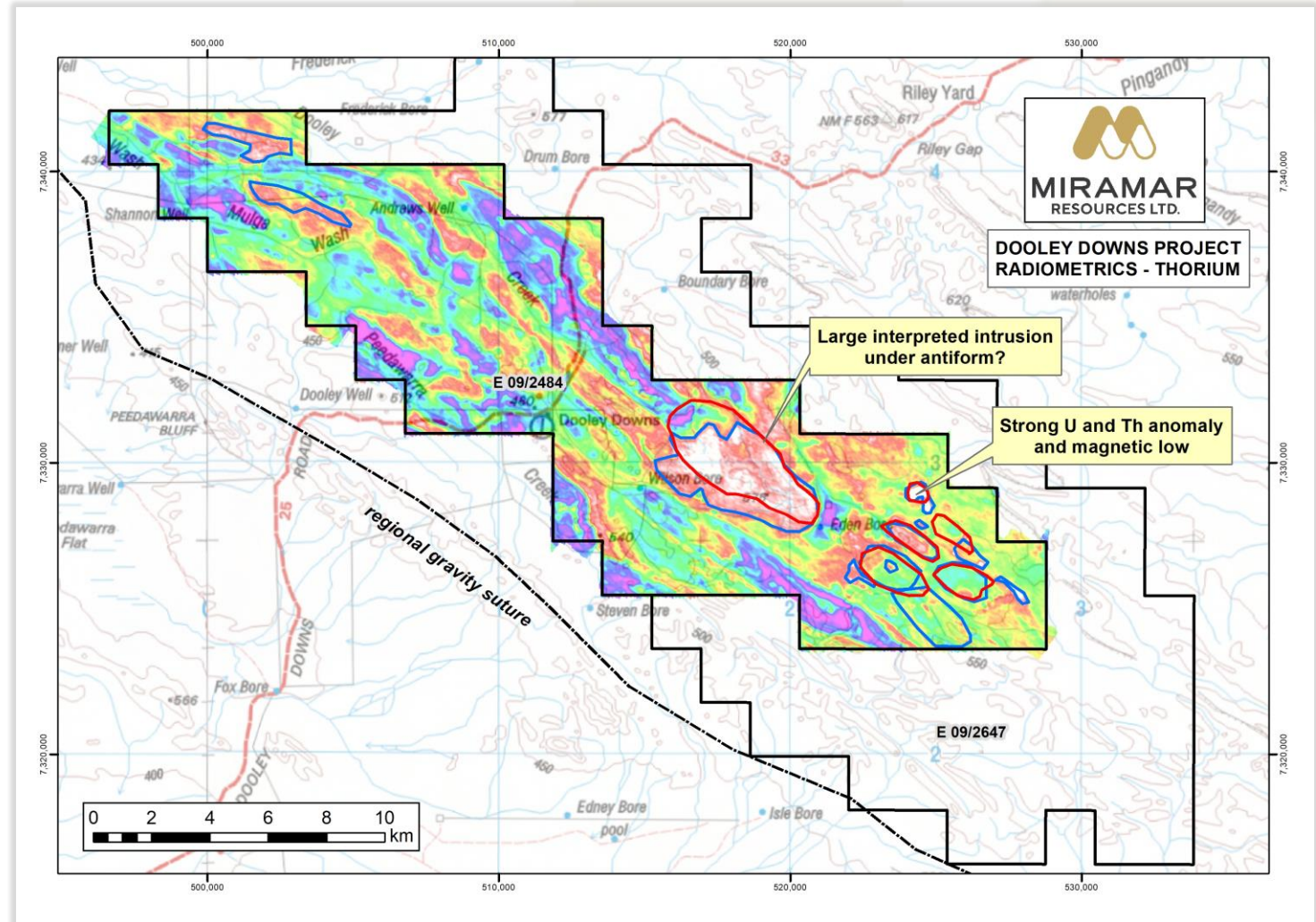


- Multiple crustal-scale structures/fluid conduits
- **REE** potential
  - Mag/radiometric anomalies
  - REE carbonatite discoveries nearby
- **Ni-Cu-PGE** potential
  - Prot. dolerite sills
  - Stream sed/soil anomalies
  - EM conductors

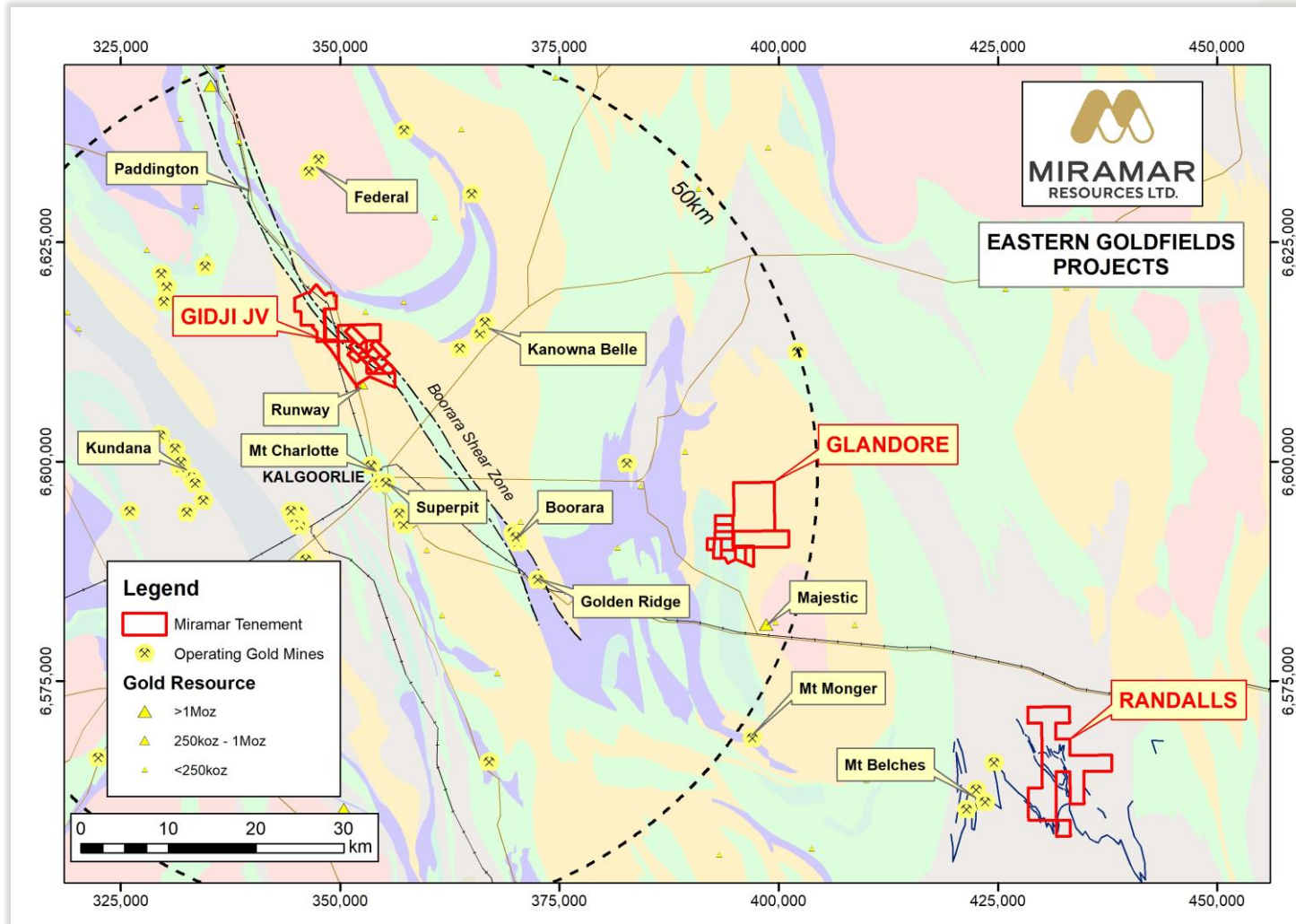


# Bangemall - Dooley Downs Project

- Detailed magnetic and radiometric survey recently completed
- Multiple potential intrusions identified
  - **U** and **Th** anomalism
  - Magnetic lows
- Follow-up geophysical and geochemical surveys planned



# Eastern Goldfields Projects



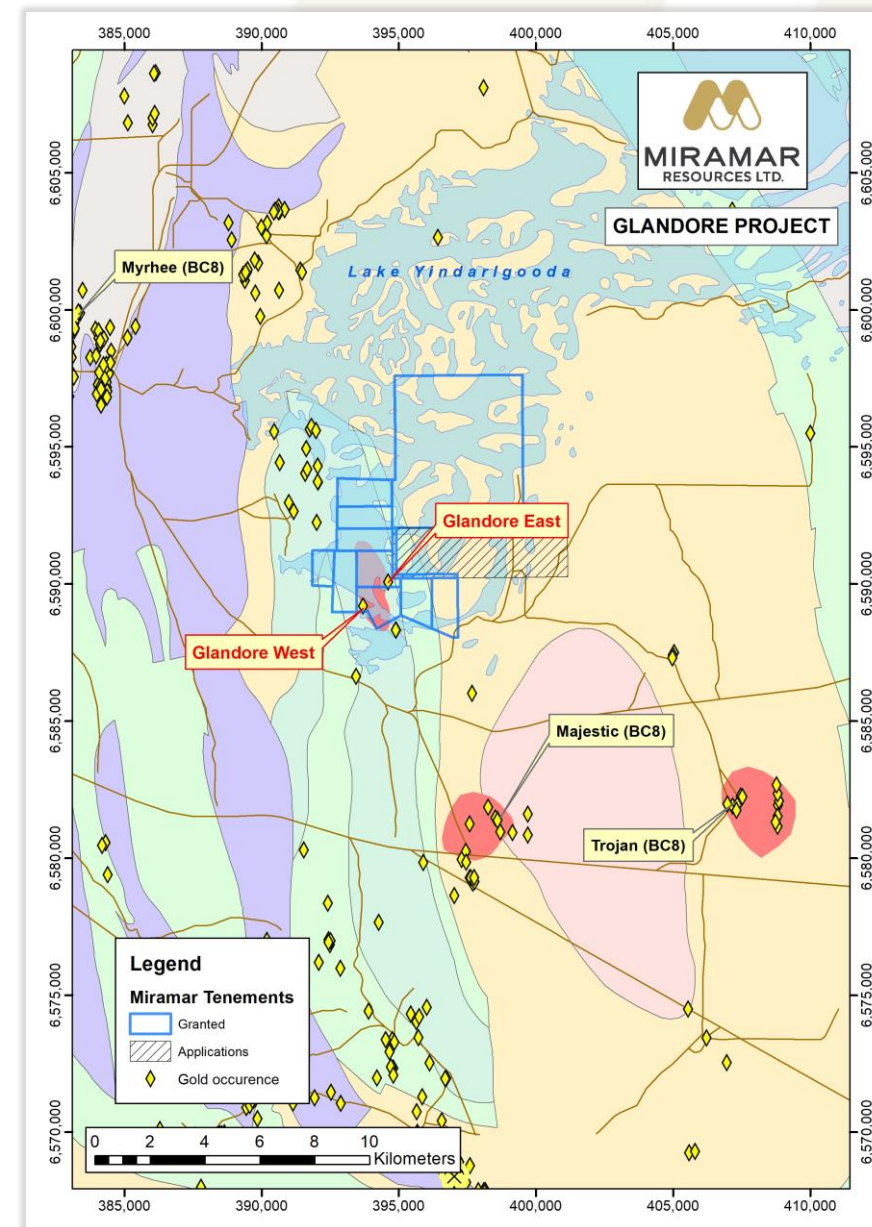
*Strategic land position in world-class gold province*

- Three underexplored projects close to **Kalgoorlie-Boulder**
- Year-round access
- Proximity to multiple gold mining/processing operations



# Glandore

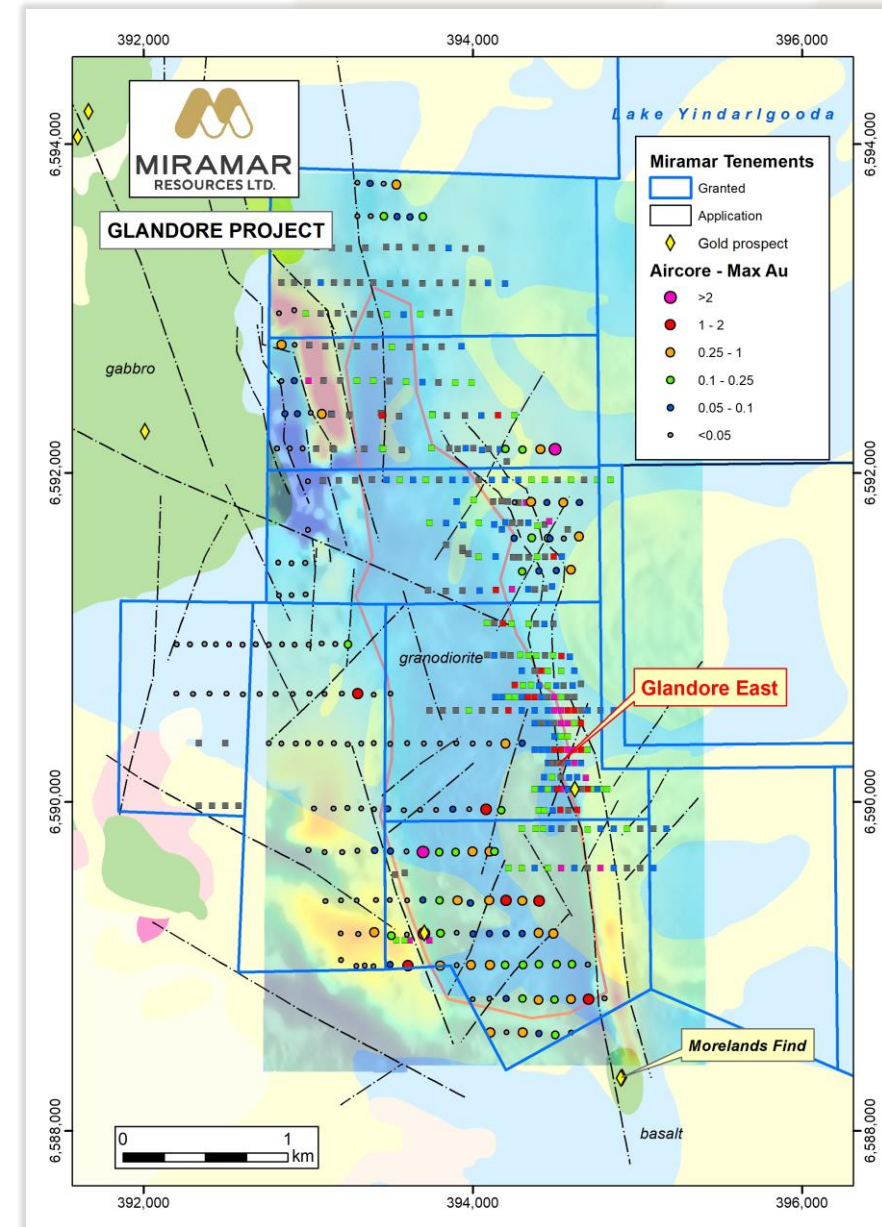
- Underexplored **high-grade gold** opportunity – 40km E of Kalgoorlie
- Close to various gold mining/processing infrastructure





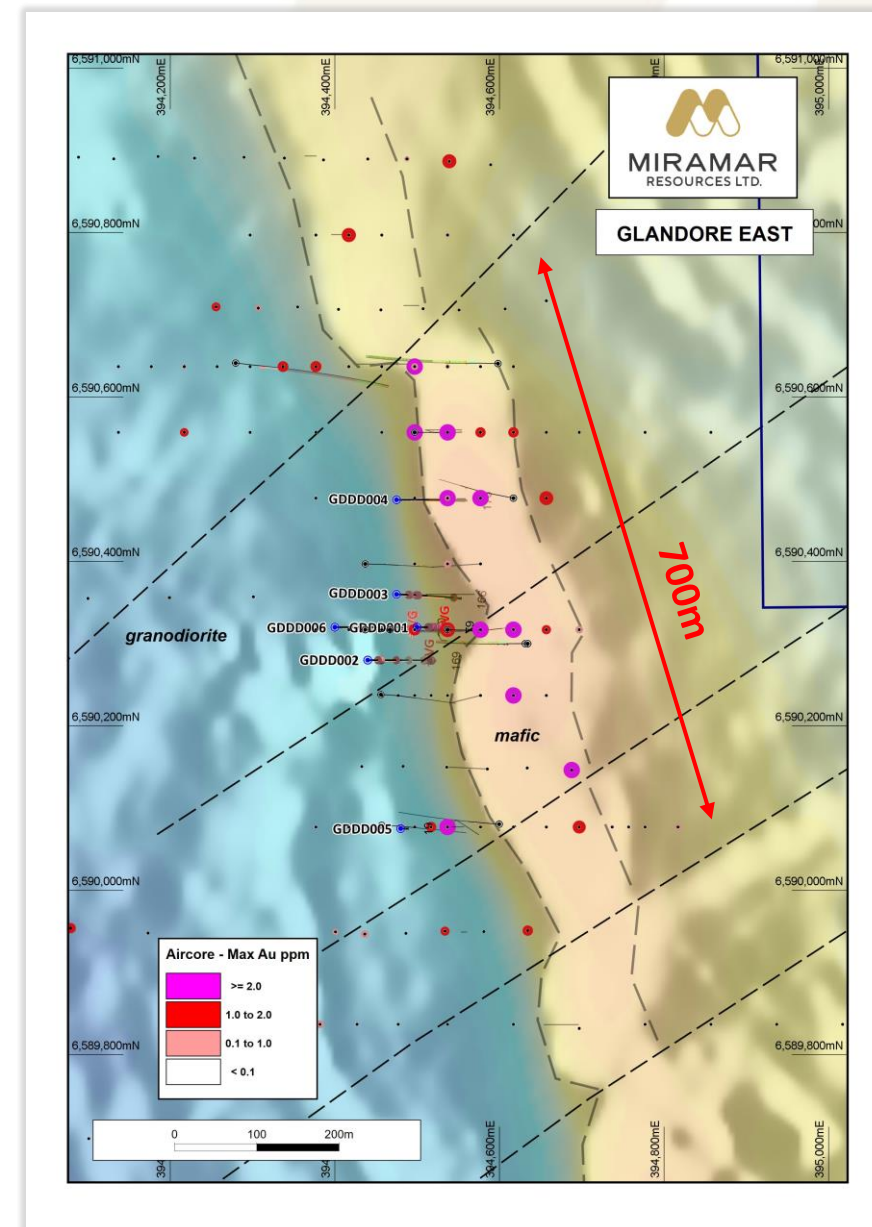
# Glandore

- Large gold footprint outlined by historic and recent land/lake aircore drilling
- High-grade gold results at mafic/granite contact – “**Glandore East**” target
- Detailed UAV magnetic survey highlights multiple NE-trending and potentially mineralised structures crosscutting granite



# Glandore East

- Targeting intersection of NE-trending structures and granodiorite/mafic contact
- **High-grade gold** in first two holes
  - **GDDD001 - 0.8m @ 13.9g/t Au**
  - **GDDD002 - 0.8m @ 5.91g/t Au**
- Drilling ongoing – ***assays pending***
- Significant strike potential – open at depth





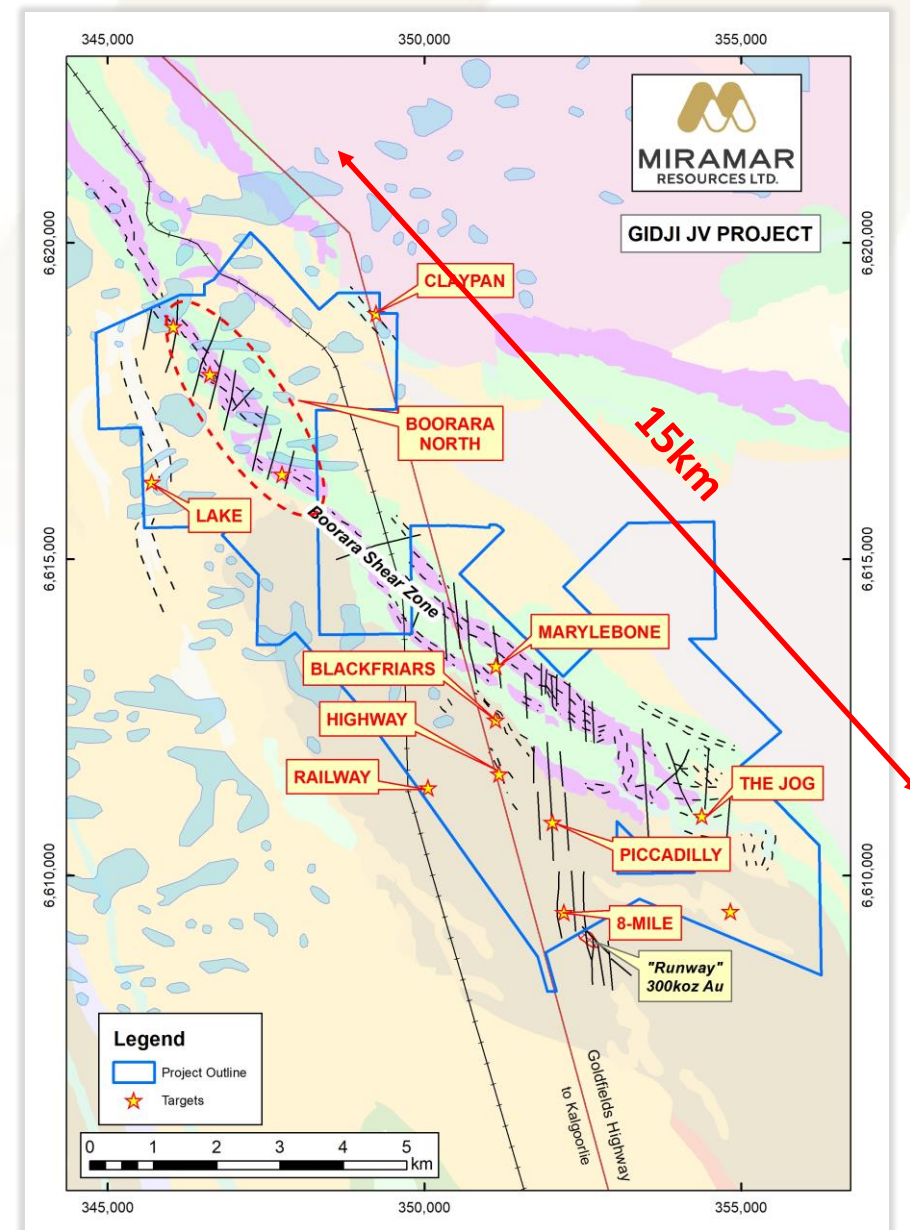
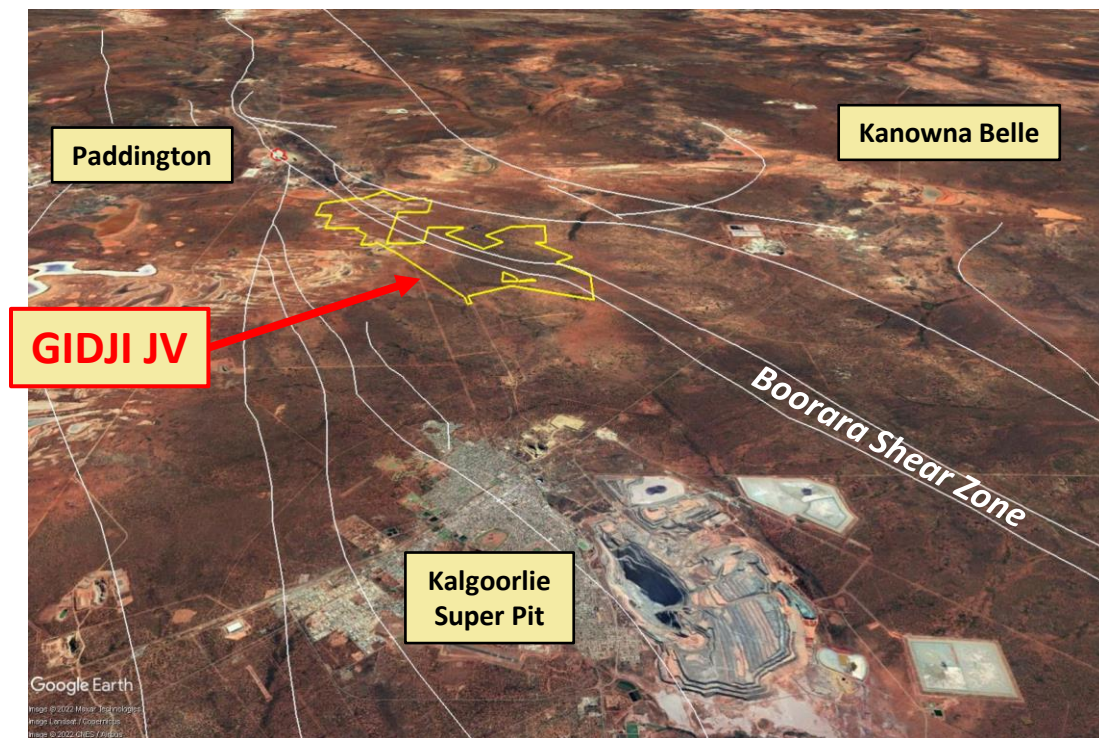
# Glandore East





# Gidji JV

*“The cheapest house on the best street”*

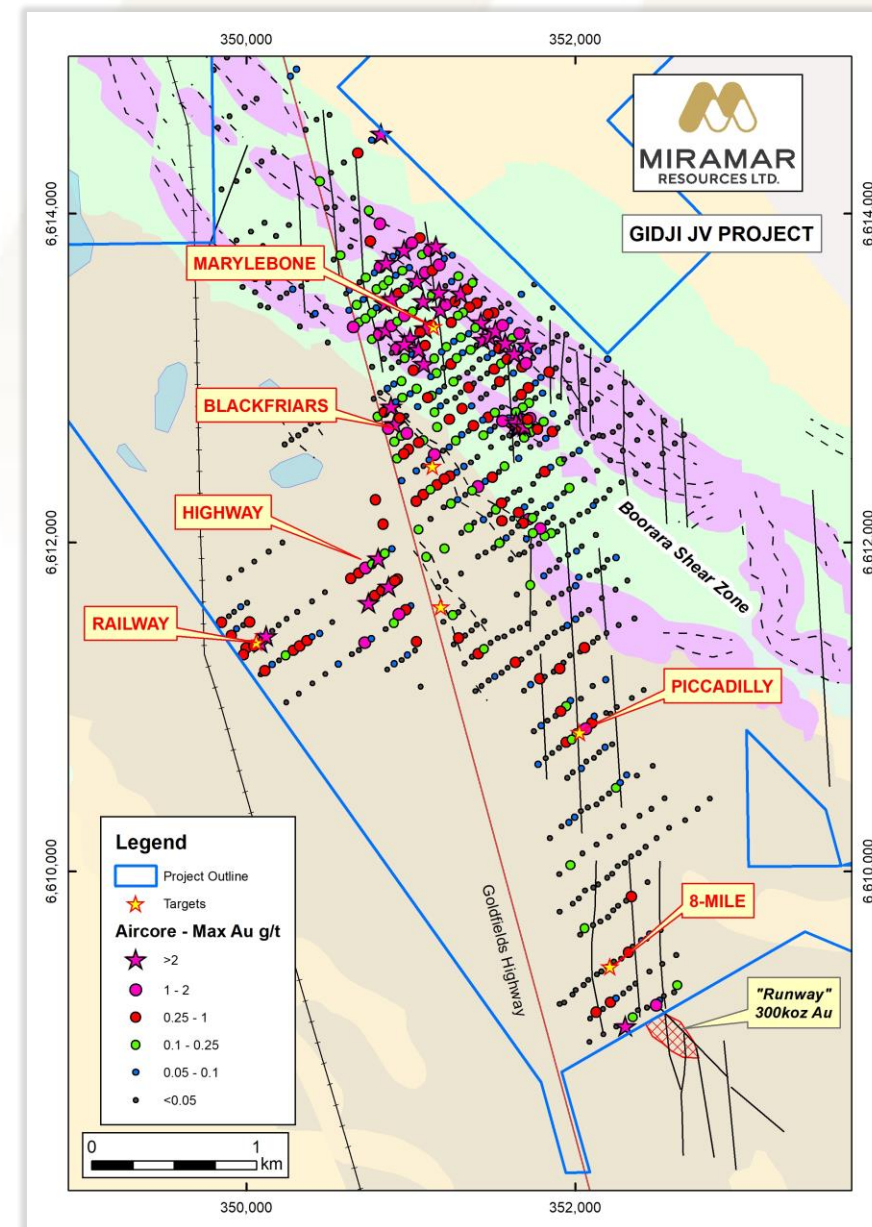




# Gidji JV

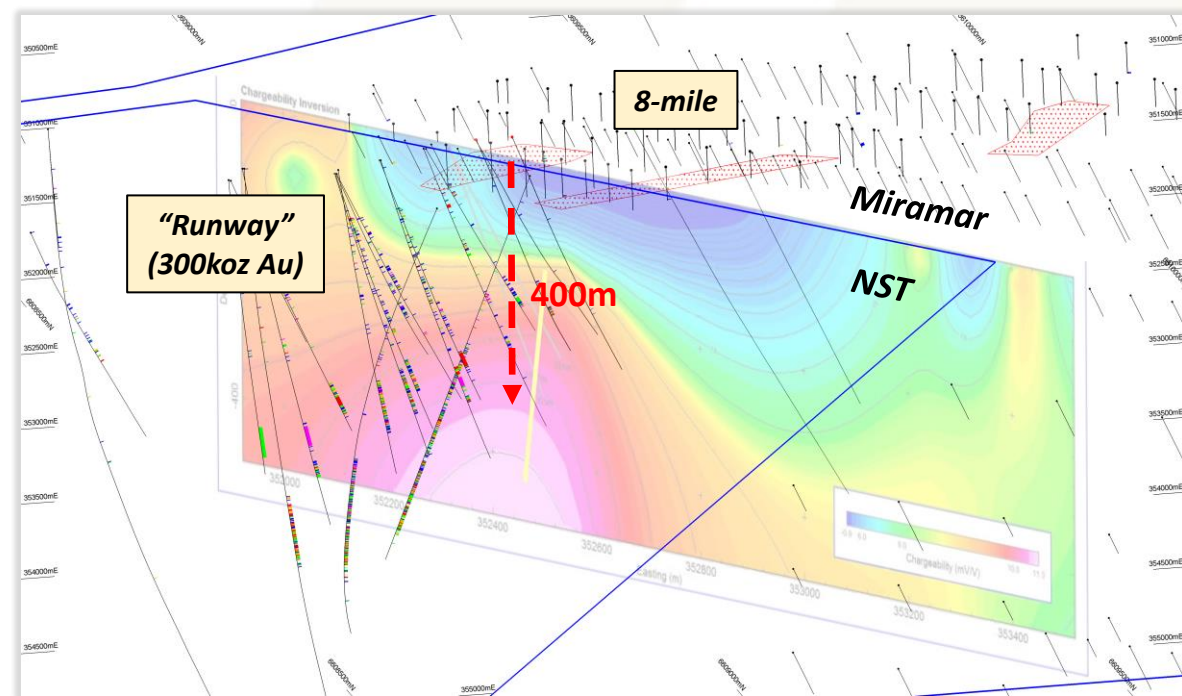
## *Multiple large new gold targets outlined*

- **Marylebone**
  - 2 x **>1.6km** long gold anomalies with multiple high-grade results up to **13g/t Au**
- **Blackfriars**
  - **>1.4km** long anomaly at mafic/sediment contact with results up to **11.8g/t Au (EOH)**
- **Highway/Piccadilly**
  - **>1km** long anomaly with multiple **+2g/t** results
- **Railway**
  - High-grade hits in Black Flag sediments
- Working to refine bedrock targets for RC/DD drilling



# Gidji JV – 8 Mile

- North of 300koz “Runway” deposit (NST)
  - 6m @ 11.73g/t Au
  - 7m @ 8.51g/t Au
  - 6.3m @ 7.63g/t Au
  - 217m @ 2.06g/t Au\*
  - 281m @ 1.30g/t Au\*
- New discovery beneath Runway
  - Opposite dip to Runway?
- Strong IP chargeability anomaly

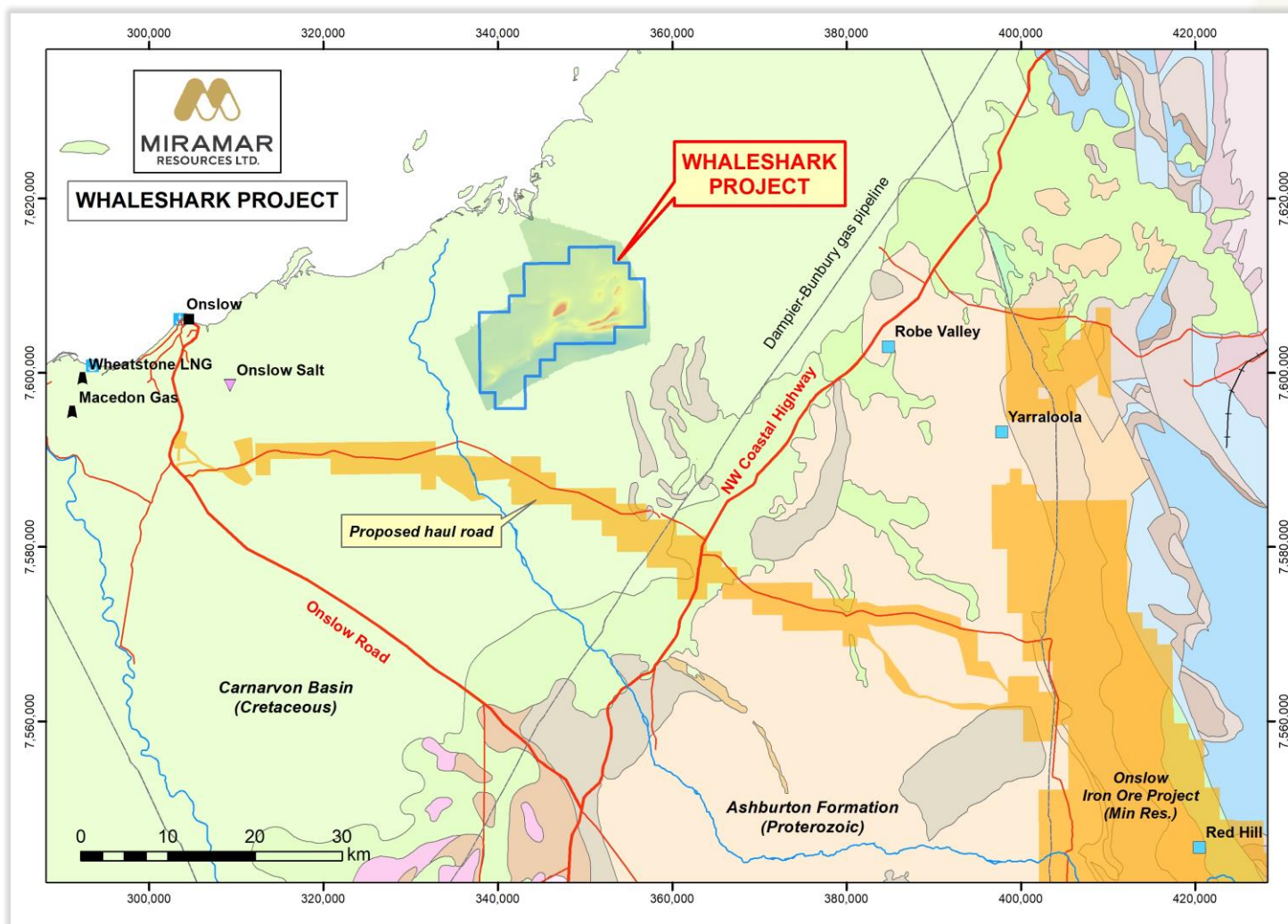


IP Chargeability section (looking towards NW)

\* Down-dip intersections



# Whaleshark Cu-Au Project



## *Potential for IOCG and/or BIF-hosted gold*

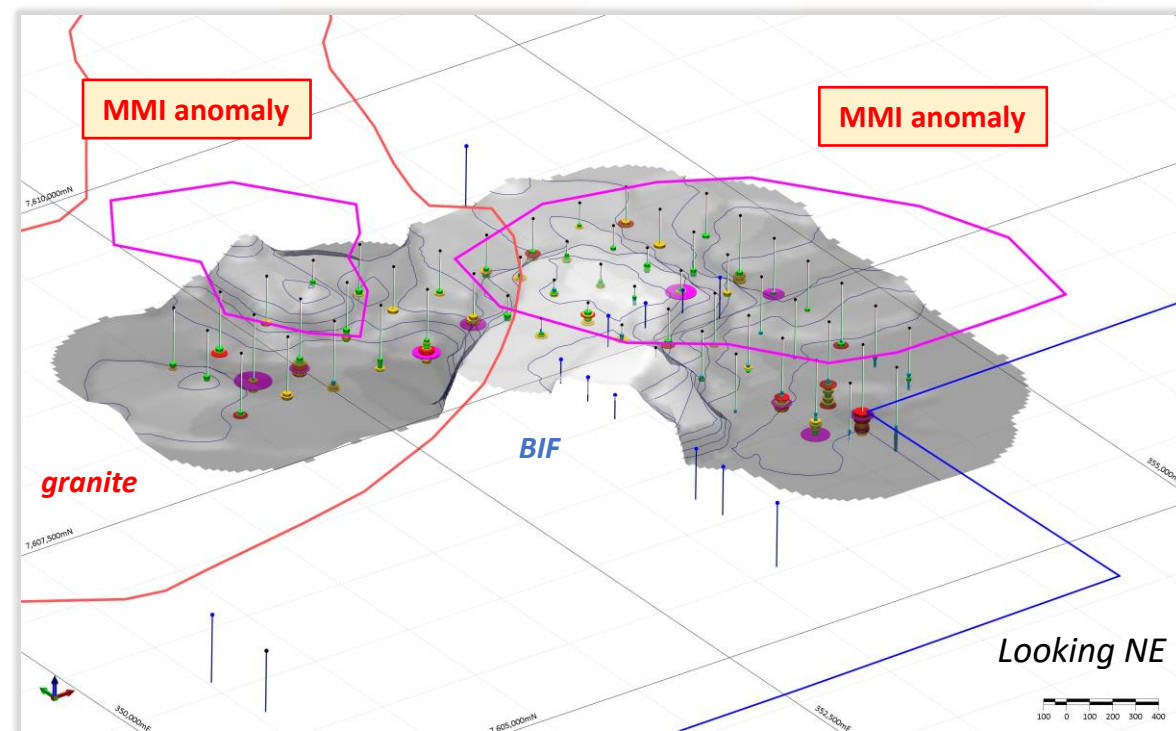
- 40km east of Onslow
- Proterozoic BIF and granite under Carnarvon Basin sediments
- Basement depth mostly <100m
- Proximity to major infrastructure

# Whaleshark Cu-Au Project



- Aircore drilling outlines **Cu** and **IOCG** **pathfinder** anomalies at unconformity
- Depth to basement ~100m
- Ground geophysics and follow-up drilling planned

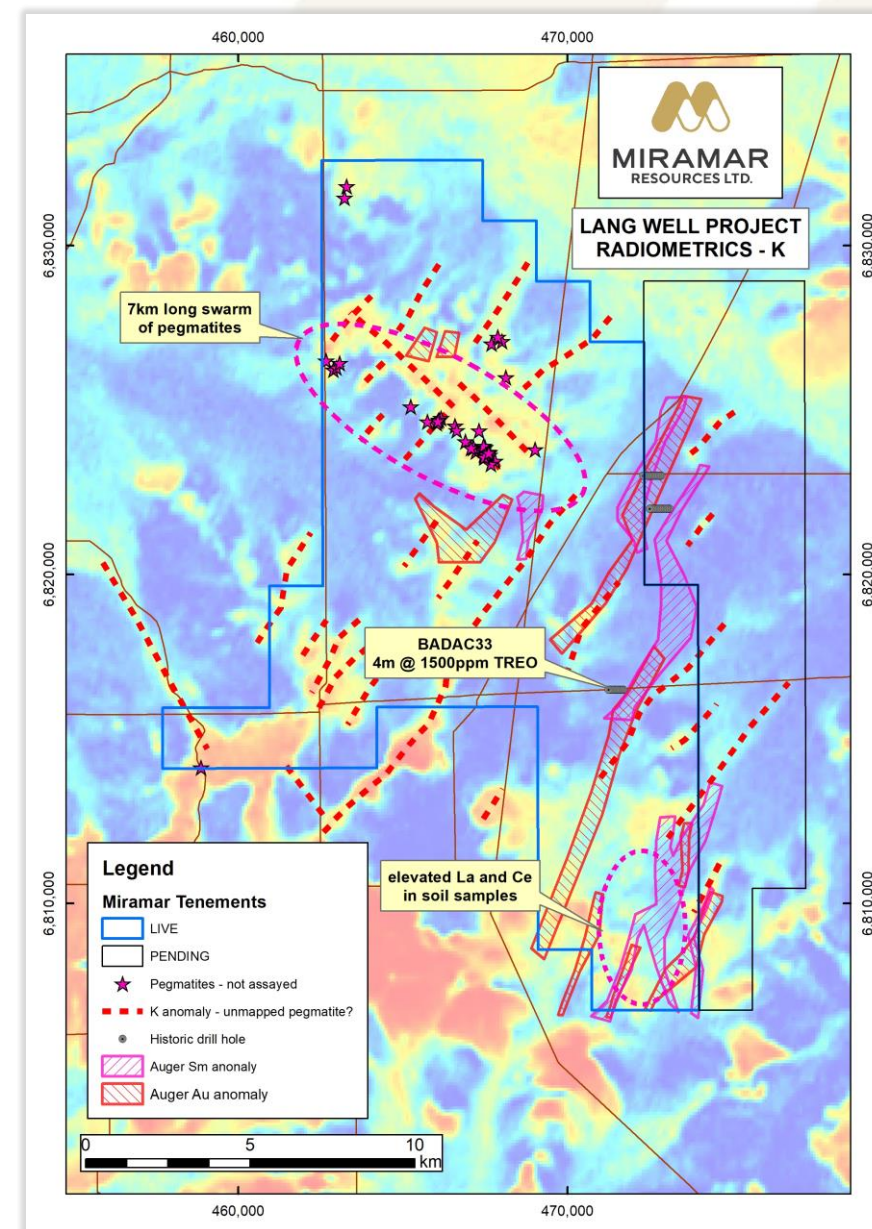
*Large Cu anomalies at basement unconformity*





# Lang Well (REE/Au)

- Multiple large untested auger anomalies
  - **Au and REE (Samarium)**
- Elevated **REE (La and Ce)** in soils
- Shallow (clay-hosted) **REE** mineralisation in historic aircore drillhole
  - **4m @ 1500ppm TREO**
  - High proportion of **Nd<sub>2</sub>O<sub>3</sub>**
- Multiple potential pegmatites identified from regional radiometric data
- Systematic sampling and aircore planned



# Target pipeline provides substantial upside

Project	<i>Applications</i>	Target Generation	Aircore Drilling	Bedrock Testing
GLANDORE			Glandore East	
			Glandore West/Island	
GIDJI JV				Marylebone 8-Mile Lake The Jog
			Blackfriars Railway Piccadilly	
		Claypan	Highway Boorara North	
WHALESHARK		IOCG targets		
BANGEMALL	<i>Blue Bar Cheyne Springs</i>	Dooley Downs Mt Vernon		
LANG WELL		REE/Au targets		

# Corporate Snapshot

ASX Code	M2R
Shares on Issue	70.7M
Listed Options (25c)	28.0M
<b>Market Capitalisation (@ 10c)</b>	<b>\$6.8M</b>
<b>Cash/Investments (30 Sep 22)</b>	<b>\$2.1M</b>
Enterprise Value	\$4.7M

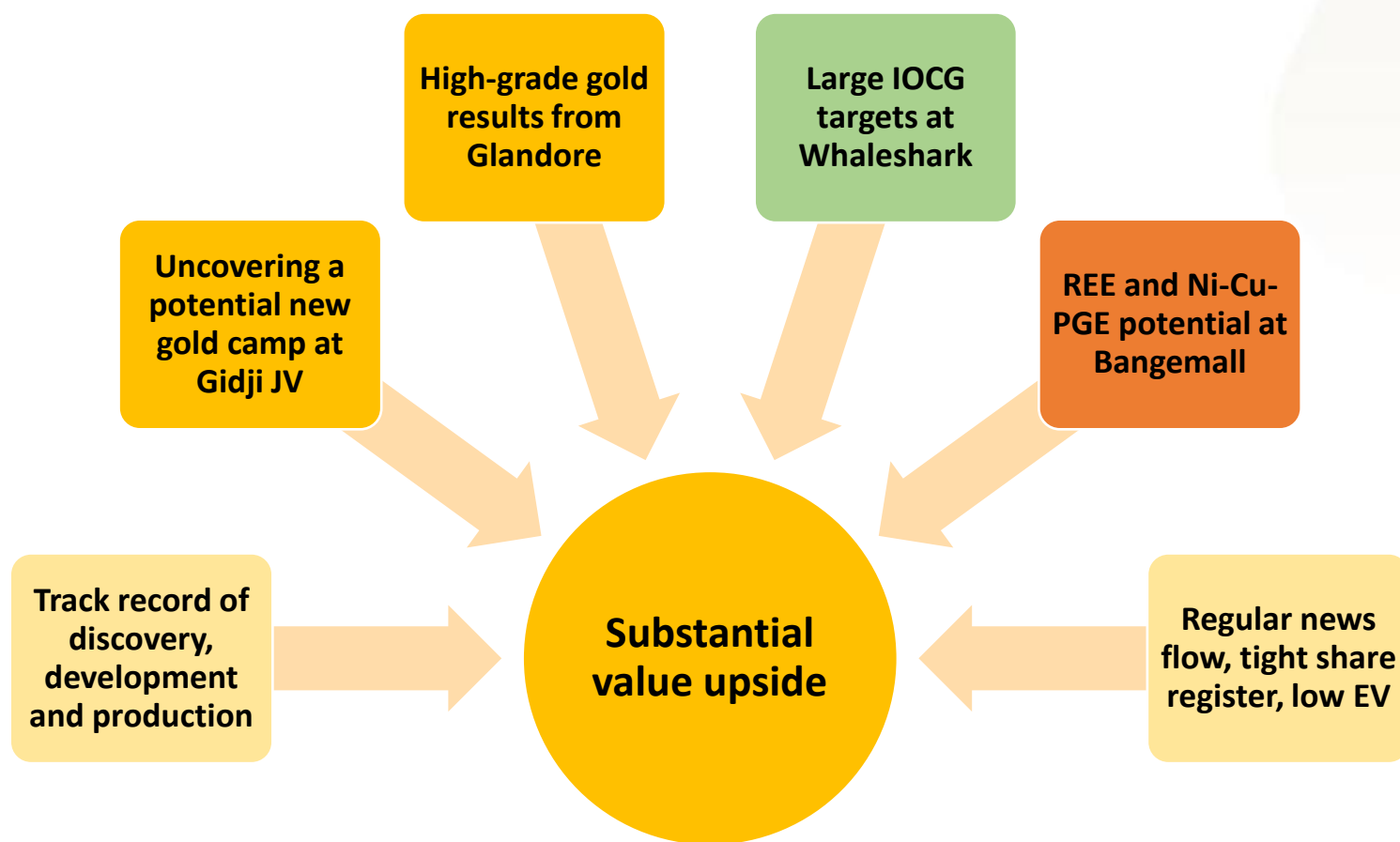
Substantial Shareholders	%
XGS Pty Ltd (Allan Kelly)	9.9
Faraday Nominees Pty Ltd	9.3
<b>Top 20 Holders</b>	<b>42.5</b>
Board	10.8

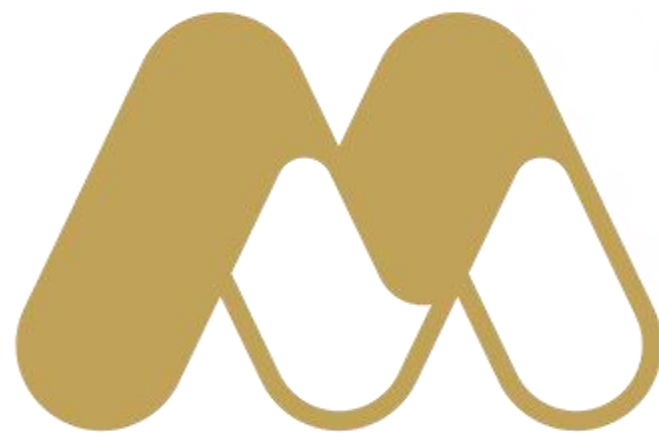
## Experienced Board – with track record of successful discovery, development and production

<b>Allan Kelly</b> (Exec. Chairman)	<ul style="list-style-type: none"> <li>• <b>Geologist/Geochemist/Manager</b></li> <li>• <b>30 years experience</b> in mineral exploration, development and gold production</li> <li>• <b>Founding MD, Doray Minerals Ltd (2009-2016)</b></li> <li>• <b>AMEC “Prospector” Award – 2014</b></li> </ul>
<b>Marion Bush</b> (Technical Director)	<ul style="list-style-type: none"> <li>• <b>Geologist/Analyst/Manager</b></li> <li>• <b>25+ years experience</b> in exploration, management, directorship and marketing</li> </ul>
<b>Terry Gadenne</b> (Non-Exec. Director)	<ul style="list-style-type: none"> <li>• Rescue helicopter pilot and former Army and Navy Officer</li> <li>• <b>25+ years experience</b> in the defence forces, aviation, agriculture and mining services</li> </ul>
<b>Mindy Ku</b> (Co. Sec/CFO)	<ul style="list-style-type: none"> <li>• <b>15+ years experience</b> with public and private companies</li> </ul>



# Summary





[miramarresources.com.au](http://miramarresources.com.au) | ASX: **M2R**