



# Exploring *Renewable Energy* Resources



# Important Notice & Disclaimer

This presentation has been prepared by Narryer Metals Limited (**Narryer** or the **Company**) and contains background information about Narryer current as at the date of this presentation. The presentation is in summary form and does not purport to be all inclusive or complete. Recipients should conduct their own investigations and perform their own analysis in order to satisfy themselves as to the accuracy and completeness of the information, statements and opinions contained in this presentation.

This presentation is for information purposes only. Neither this presentation nor the information in it constitutes an offer, invitation, solicitation or recommendation in relation to the purchase or sale of shares in any jurisdiction. This presentation does not constitute investment advice and has been prepared without taking into account the recipients' investment objectives, financial circumstances or particular needs and the opinions and recommendations in this presentation are not intended to represent recommendations of particular investments to particular persons. Recipients should seek professional advice when deciding if an investment is appropriate.

To the fullest extent permitted by law, Narryer and its officers, employees, agents and advisers do not make any presentation or warranty, express or implied, as to the currency, accuracy, reliability or completeness of any information, statements, opinions, estimates, forecasts or other representations contained in this presentation. No responsibility for any errors or omissions from this presentation arising out of negligence or otherwise is accepted.

This presentation may include forward looking statements, Forward looking statements are only predictions and are subject to risks, uncertainties and assumptions which are outside the control of Narryer. Actual values, results or events may be materially different to those expressed or implied in this presentation. Given these uncertainties, recipients are cautioned not to place reliance on forward looking statements. Any forward looking statements in this presentation speak only at the date of issue of this presentation. Subject to any continuing obligations under any applicable law, Narryer does not undertake any obligation to update or revise any information or any of the forward looking statements in this presentation of any changes in events, conditions or circumstances on which any such forward looking statements is based.

## **Compliance Statement**

The information in this presentation that relates to prior Exploration Results for the Narryer Project, Ceduna and Sturt Projects and the Rocky Gully Project is extracted from the following ASX Announcements lodged with ASX on 26 May 2022, 20 June 2022, 26 July 2022, 1 August 2022, 19 September 2022 and 22 November 2022, which are available on the Company's website [www.narryer.com.au](http://www.narryer.com.au) and the ASX website (ASX code: NYM). The Company confirms that it is not aware of any new information or data that materially affects the information included in the original market announcements and that all material assumptions and technical parameters underpinning the estimates in the market announcements continue to apply and have not materially changed. The Company confirm that form and context in which the Competent Person's findings are presented have not been materially modified from the original market announcements.

## **Competent Person Statement**

The information in this announcement that relates to Exploration Results is based on information compiled by Dr Gavin England, a Competent Person who is a member of the Australian Institute of Mining and Metallurgy and the Australian Institute of Geosciences. Dr England is the Managing Director of Narryer Minerals Limited. Dr England declares in accordance with the transparency principles of the JORC Code that he has a personal financial interest in Narryer Mineral Limited. Dr England has sufficient experience that is relevant to the style of mineralisation and type of deposit under consideration and to the activity undertaken to qualify as a Competent Person as defined in the 2012 Edition of the Australian Code for Reporting of Exploration Results, Mineral Resources and Ore Reserves. Dr England has consented to the inclusion in this Public Report of the matters based on his information in the form and context in which it appears.

# Why Narryer?

- ▶ Strategic ground, 100% owned for Ni-Cu-PGE and REE in both the Narryer Terrane (WA) and Gawler Craton (SA)
- ▶ Drilling underway for Ni-Cu-PGE Targets for at flagship Narryer Project
- ▶ New Rocky Gully clay-hosted REE project (WA) demonstrates high grade intersections, metallurgy underway. Scandium upside.
- ▶ Narryer Terrane and Gawler Craton now considered REE “Hotspots” with recent discoveries. NYM well positioned
- ▶ Experienced Geology Team and Management
- ▶ Cash (30 Sep 2022)- \$3.2 million
- ▶ Market Cap (22 Nov 2022 @ 0.175) -\$8.3 million





# Experienced Team



**Richard Bevan**  
*Non-Executive Chairman*

- Extensive senior management experience, having been the Managing Director / CEO of a number of listed and unlisted companies
- Founding MD of nickel company, Cassini Resources
- Current Non-Executive Director of Empired (ASX:EPD), Killi Resources Ltd (ASX:KLI), TG Resources (ASX:TG6) and Cannon Resources (ASX:CNR)



**Dr Gavin England**  
*MD & Technical Director*

- Geologist, 20+ years experience with senior positions in mineral exploration, project development and technical advisory roles
- Previous Ni-Cu-PGE experience as geologist for LionOre, Impact Minerals and Royal Resources
- Previous Non-Executive director for First Au (ASX:FAU) and founding Director of consulting company Clare Geological



**Philip Warren**  
*Non-Executive Director*

- Chartered accountant and Managing Director of corporate advisory firm Grange Consulting Group
- 15+ years of corporate advisory experience specialising in financing, capital markets, and corporate governance
- Founding director of Cassini Resources
- Current Non-Executive Director of Anax Metals Ltd (ASX:ANX), Killi Resources Ltd (ASX: KLI) Rent.com.au (ASX:RNT) and Family Zone Cyber Safety (ASX:FZO)



**Damon O'Meara**  
*Non-Executive Director*

- Over 40 years experience in the mining industry, having worked for Denis O'Meara Prospecting and former ASX-Listed Miralga Mining NL
- Denis O'Meara Prospecting founders of Atlas Iron, Kalamazoo and De Grey Mining
- Co-founder of Outback Trees and MD of private exploration companies Great Sandy Pty Ltd and Mineral Edge Pty Ltd
- Non-Executive Director of First Au Limited (ASX:FAU)



**Jane Crawford**  
*General Manager - Corporate*

- 25+ years professional experience working in senior roles/consulting in corporate & project management, business development and strategy & corporate communications in the UK and WA
- 18 years as founding director of private consulting firm with high-profile clients across a range of industry sectors
- Recent focus mining industry, many years consulting to Rio Tinto and private mining companies

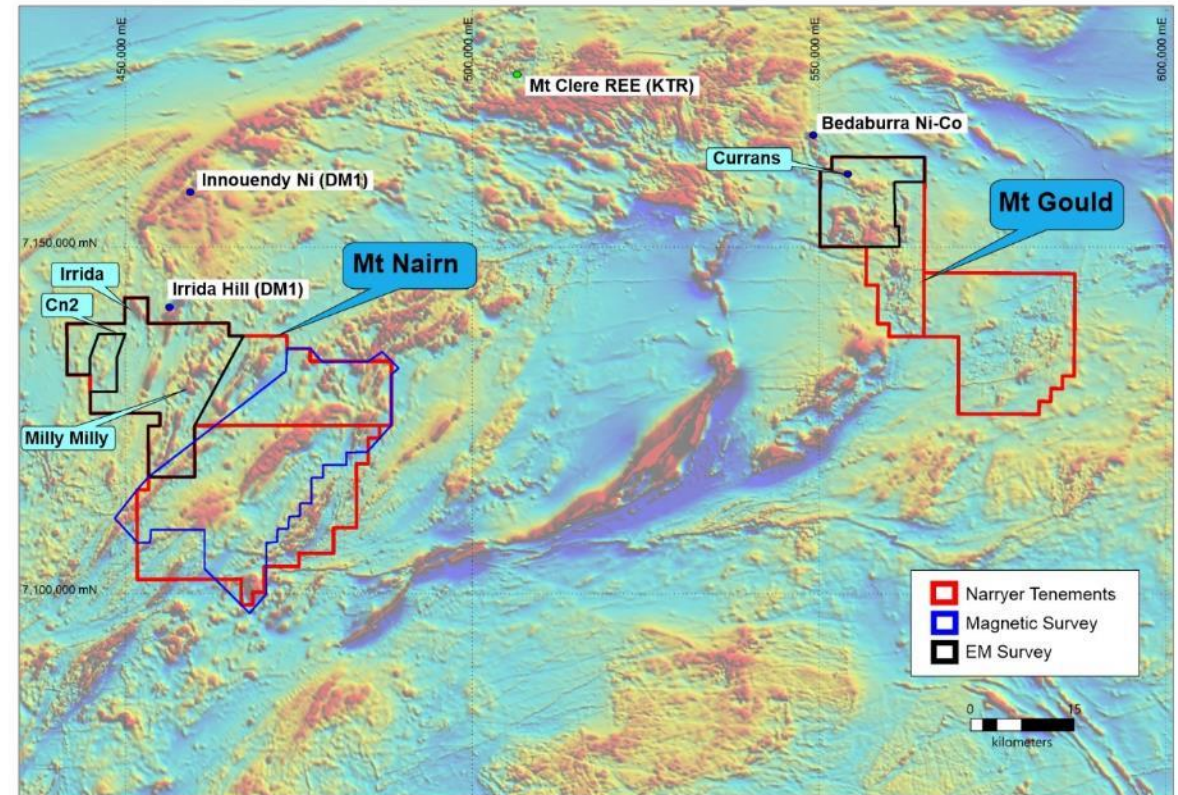
# Narryer Ni-Cu-Co-PGE and REE Project, WA





# Location and Background

- ▶ Narryer Project covers >1,800km<sup>2</sup> of tenure
- ▶ M-UM intrusives identified by previous explorers and the GSWA in Narryer Terrane, Yilgarn Craton
- ▶ Minimal modern Ni-Cu-PGE exploration
- ▶ Targeting chonolith-style **Ni-Cu-PGE** (e.g. Nova Bollinger, Savannah) and layered **PGE-Ni-Cu-(Cr)** mineralisation (e.g. Panton Sill)
- ▶ Airborne magnetic and radiometrics<sup>1</sup> and large EM<sup>2</sup> surveys completed after listing, with anomalies identified



<sup>1, 2</sup> NYM : ASX announcement 20 June 2022 and 4 May 2022



# Prospective Terrane for intrusion related Ni-Cu-PGE Deposits

## Exploration Criteria for magmatic Ni-Cu

## Positives for the Narryer Project area

Large igneous province (LIP) near the edge of an ancient craton



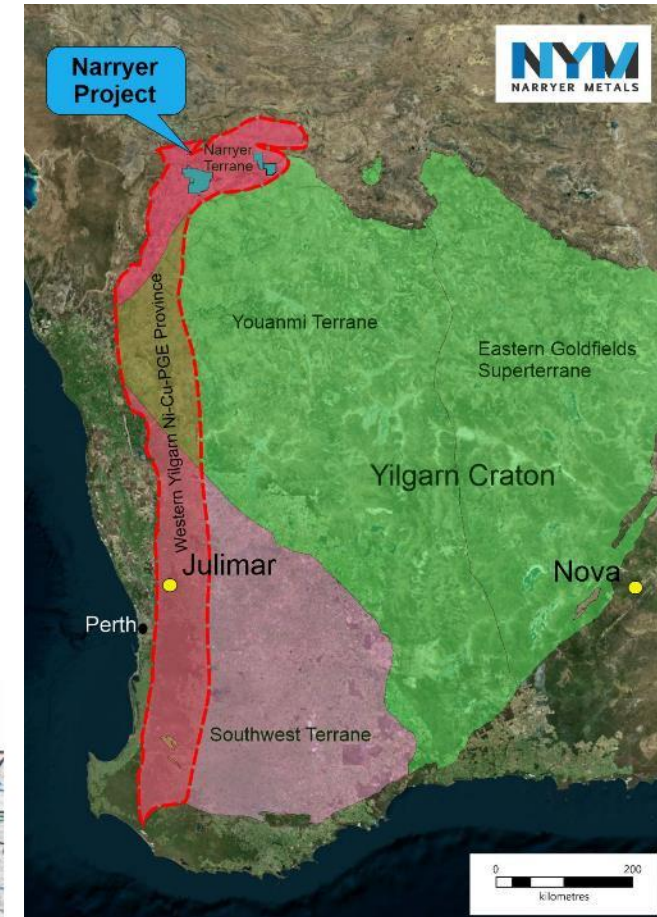
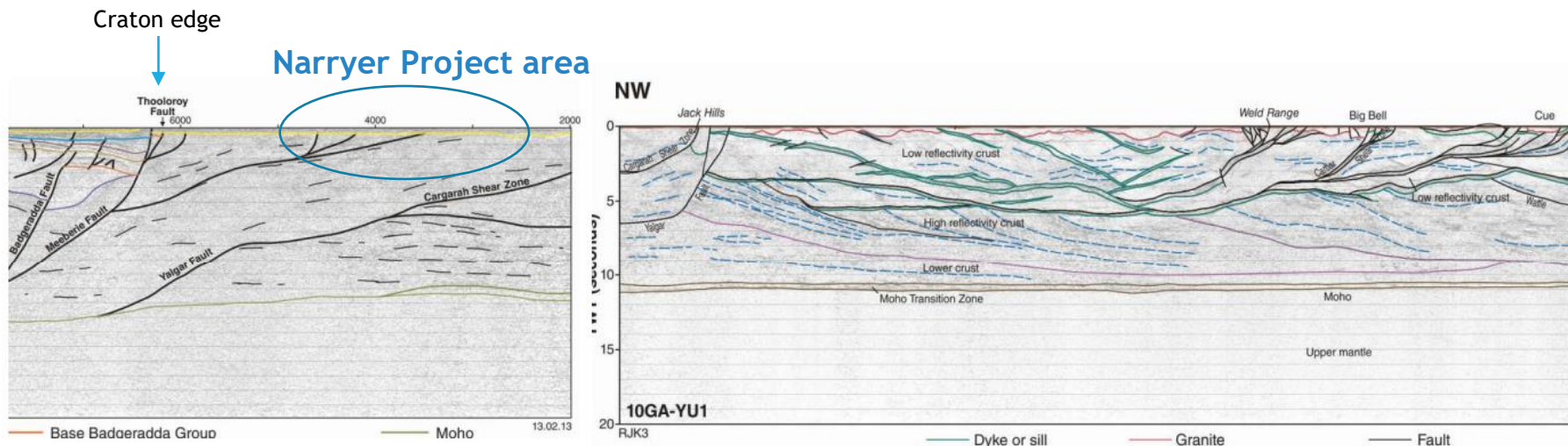
Near a major province boundary, connecting with deep penetrating faults



Small to medium size mafic-ultramafic cumulate rocks in dykes, sills, chonoliths and plugs. Evidence of Ni-Cu sulphides



Sulphur-bearing country rock



Narryer located at edge of Yilgarn, Craton, in Western Yilgarn Ni-Cu-PGE Province

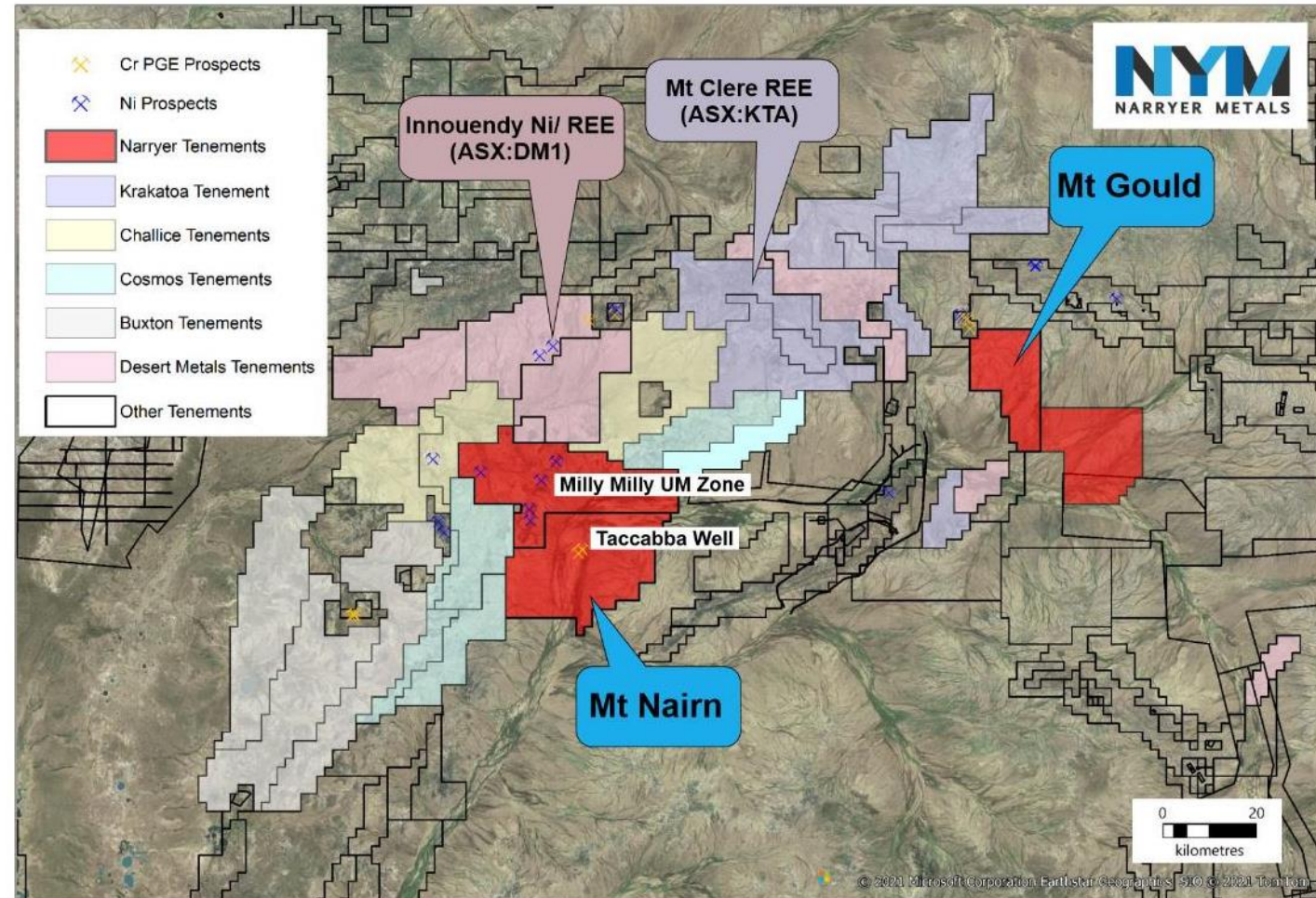
W-E seismic section transecting the Narryer terrane, showing deep mantle tapping structures as a fluid pathway to project area



# Exciting Terrane

- ▶ Chalice Mining (CHN) with surrounding tenure, recognising similar geological setting to Julimar<sup>1</sup>
- ▶ Desert Minerals (DM1) Innouendy Prospect area shows evidence of Ni-PGE and ionic clay hosted REE mineralisation<sup>2,3,4</sup>
- ▶ Krakatoa Resources (KTA) has made a major ionic clay-hosted REE discovery at Mt Clere, as well as exploration for Ni-Cu-PGE, with 20 new EM anomalies<sup>5,6</sup>

**A new Ni-Cu-PGE and REE exploration frontier in the Narryer Terrane**



<sup>1</sup> ASX: CHN, announcement 7 July 2021, <sup>2,3,4</sup> ASX: DM1, announcements 19 April, 23 May and 16 Sept 2022, <sup>5,6</sup> ASX: KTA, announcement 10 March and 19 May 2022



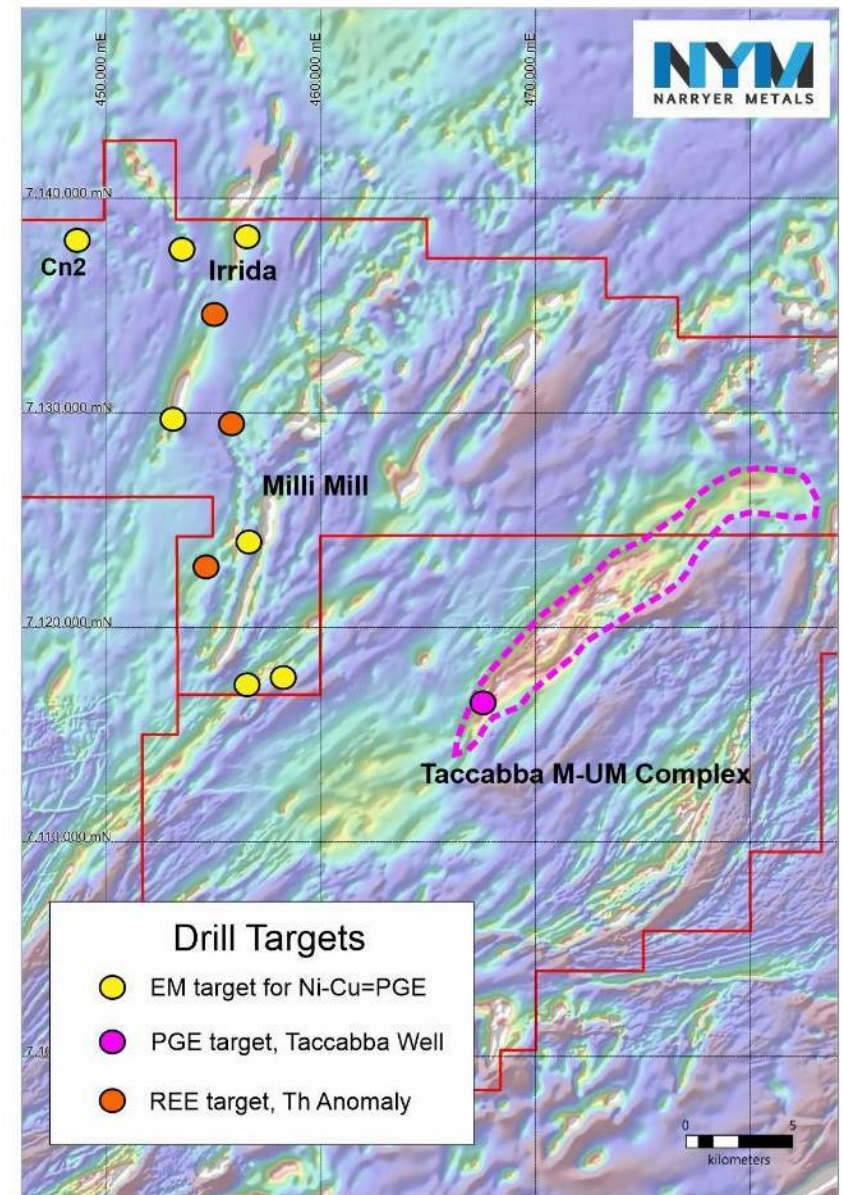
# Mt Nairn Ni-Cu-Co-REE Project, WA





# Mt Nairn - Drilling Underway

- ▶ Key Ni-Cu-PGE target area > 20km zone of M-UM intrusive rocks in outcrop and magnetics at Milli Milli and Irrida areas
- ▶ No prior drilling for Ni-Cu-PGE
- ▶ Cumulate UM observed, Rock chip assays up to 0.6% Ni<sup>1</sup>
- ▶ New high resolution Heliborne EM survey identifies 8 anomalies. Drilling underway
- ▶ Conductivity anomalies are associated with magnetic features and/or mafic-ultramafic outcrop, potentially relating to massive Ni-Cu-PGE sulphides
- ▶ REE targets also identified from Th anomalism
- ▶ PGE target from chromite bands at Taccabba Well M-UM Complex - drilling underway

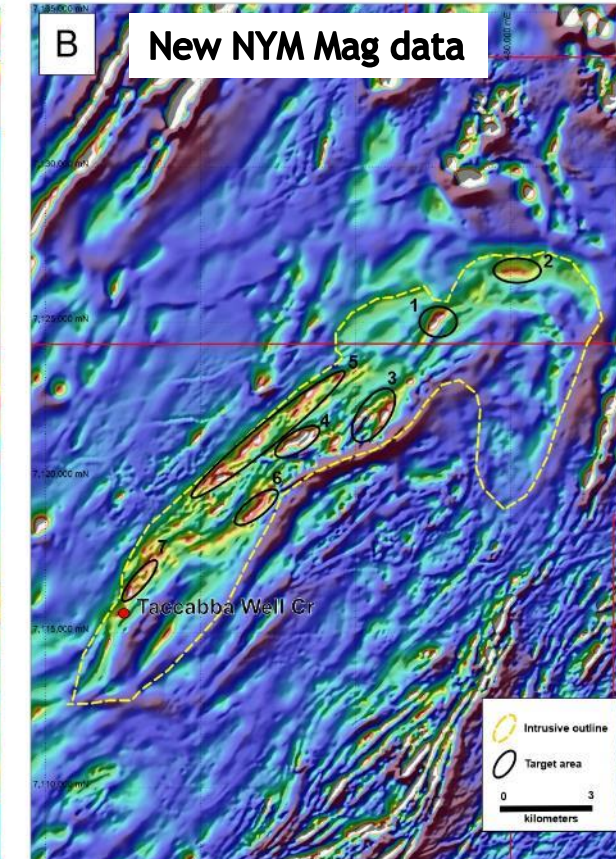
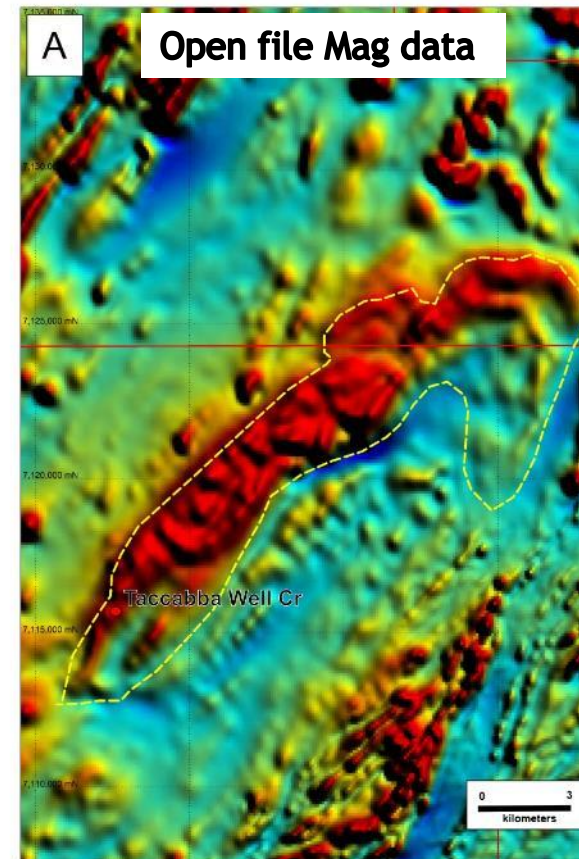


<sup>1, 2</sup> NYM : ASX announcement 12 April 2022 and 20 June 2022



# Taccabba Well PGE Prospect Area

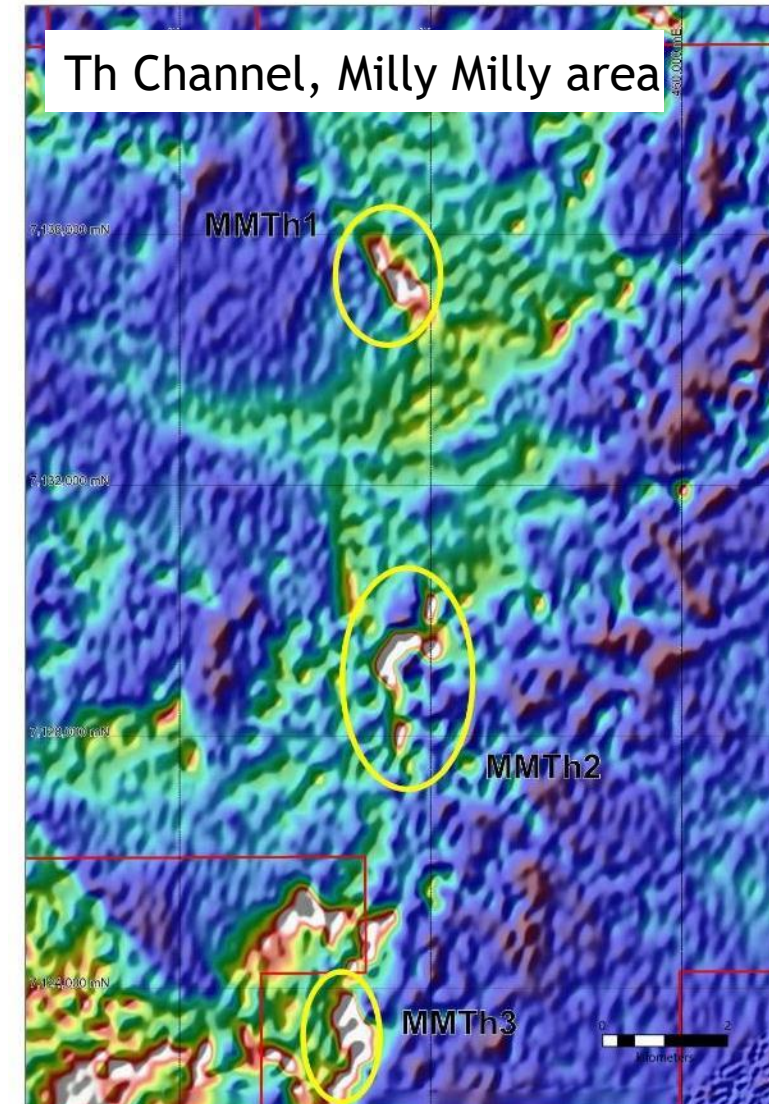
- ▶ Taccabba Well Prospect targets PGE associated with chromite-layering in layered Mafic Ultramafic complex (e.g. Panton Sill PGE deposit, Future Metals)
- ▶ Newly discovered layered Intrusive ~ 25km strike length, mostly under cover
- ▶ Chromite bands (up to 3% Cr) identified from previous drilling (Pacimex, 1973). Limited exploration since
- ▶ No PGE in previous assaying in early drilling
- ▶ Disseminated Cu sulphide observed in core
- ▶ Re-drill of chromite bands in soon to commence
- ▶ NEW high Resolution mag identifies new targets currently being followed up in the field with soils and rockchips






# REE at Mt Nairn

- ▶ Narryer Terrane new frontier for ionic clay REE
- ▶ Mt Nairn has similar geology to Innouendy<sup>1</sup> (Desert Metals) and Mt Clere<sup>2</sup> (Krakatoa Resources) Discoveries
- ▶ Th anomalies related to weathered leucocratic gneisses at Milli Milli Prospect area, similar to Innouendy and Mt Clere
- ▶ Stream Sediment program completed. Results currently being interpreted. Further fieldwork underway.
- ▶ Drilling underway on Th anomalies identified from airborne survey



<sup>1</sup> ASX: DM1, announcements 16 Sept 2022, <sup>2</sup> ASX: KTA, announcement 19 May 2022



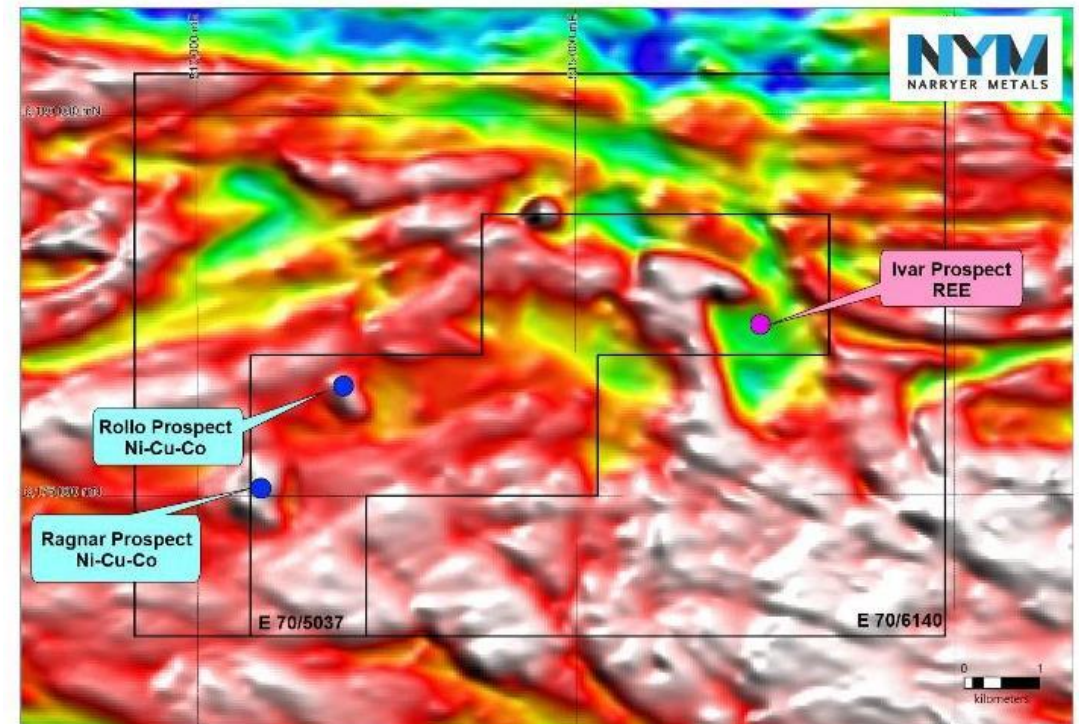


# Rocky Gully REE Project, WA with Ni-Cu-Co mineralisation potential



# Significant Ionic Clay REE Project, WA

- ▶ Narryer entered an option agreement to acquire REE project at Rocky Gully, Western Australia<sup>1</sup>
  - ▶ Targeting Ionic Clay absorption REE and Scandium
  - ▶ Carbonatite Hosted REE-Nb
- ▶ 80km NW from Albany, located along the Albany Frazer Belt.



<sup>1</sup> Refer to Narryer Metals Limited ASX Announcement 19 September 2022

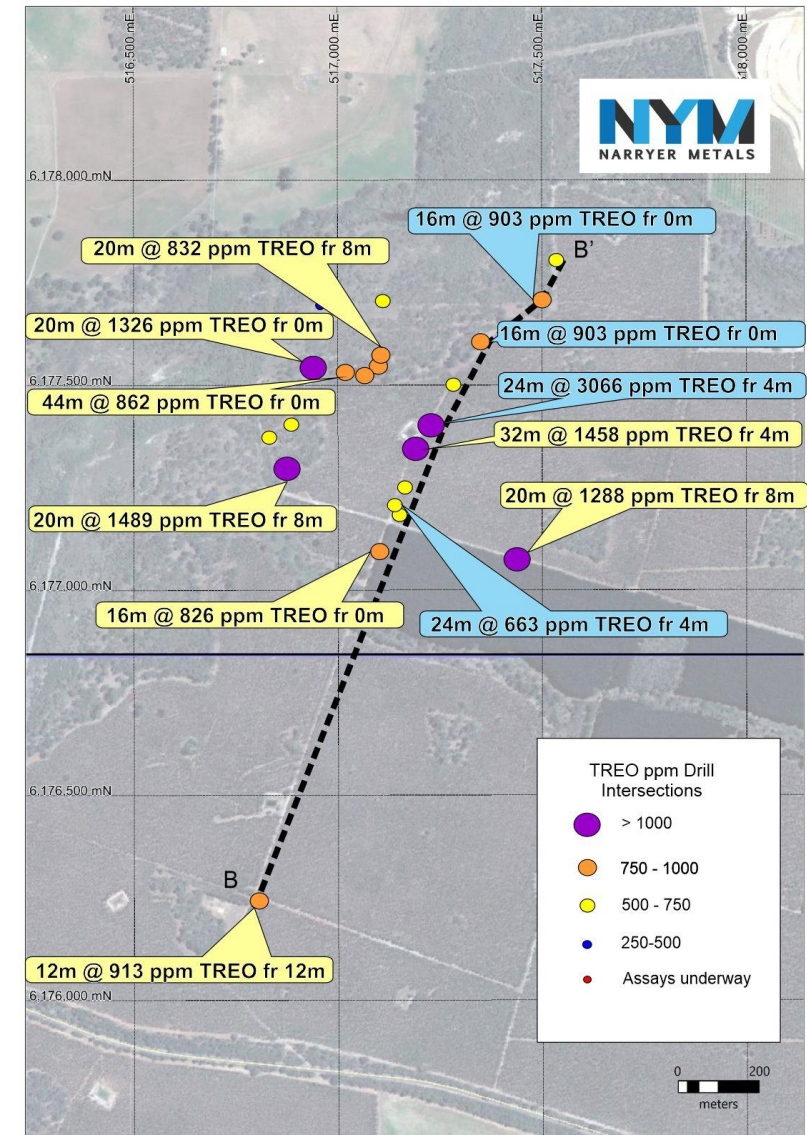


# Significant Ionic Clay REE Project, WA

- ▶ Significant REE (> 5000 ppm TREO) and Scandium (> 500 ppm Sc<sub>2</sub>O<sub>3</sub>) mineralisation identified in saprolite from multiple drilling intersects over ~ 1.5km strike, ~ 30m average thickness
- ▶ Mineralised intervals are rich in “high value” magnet suite of REE oxides (MREO - Pr<sub>6</sub>O<sub>11</sub>, Nd<sub>2</sub>O<sub>3</sub>, Tb<sub>4</sub>O<sub>2</sub>, Dy<sub>2</sub>O<sub>3</sub>), with maximum assays of 1648 ppm<sup>2</sup>
- ▶ High Scandium, valuable by-product

## Best intersects -

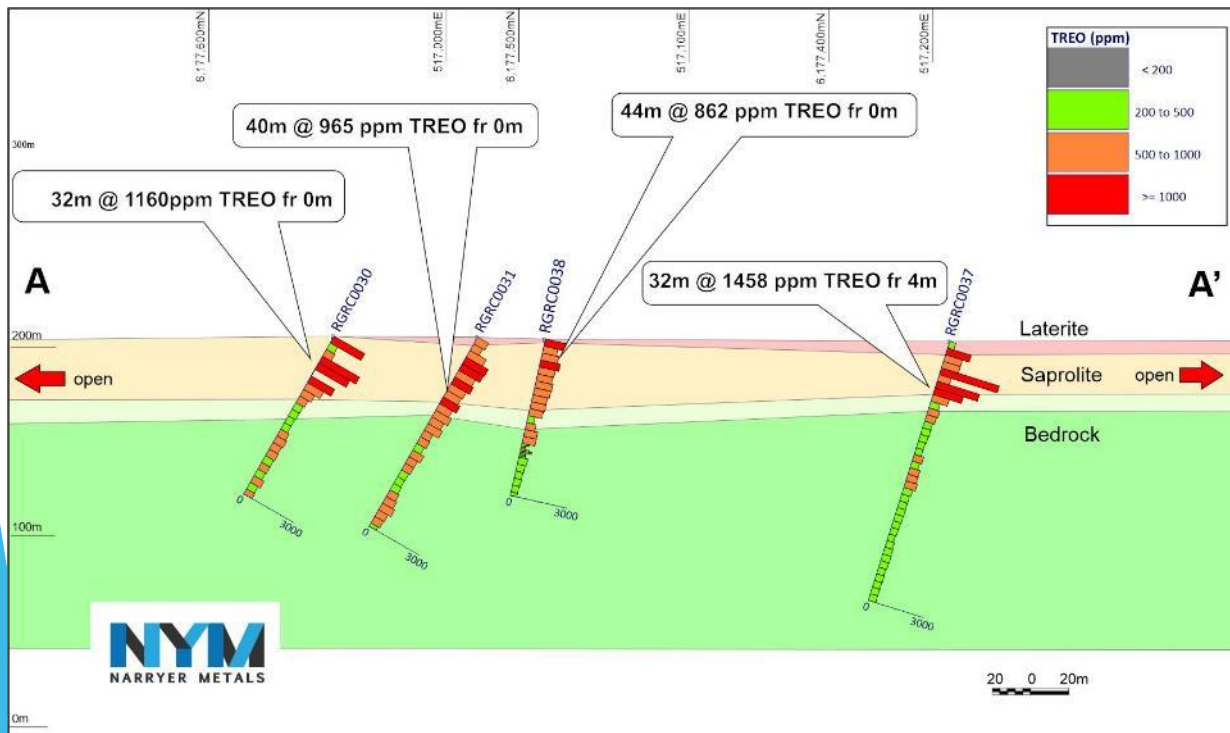
- 32m @ 1458 ppm TREO , 350 ppm MREO from 4m, including 4m @ 3165 ppm TREO, 717 ppm MREO from 16m (drillhole RGRC0037)<sup>1</sup>
- 24m @ 3066 ppm TREO, 877 ppm MREO, 337 ppm Sc<sub>2</sub>O<sub>3</sub> from 4m (drillhole RGRC0026)<sup>2</sup>, including -
  - 4m @ 5030 ppm TREO, 1648 ppm MREO from 16m
  - 8 m @ 546 ppm Sc<sub>2</sub>O<sub>3</sub> from 4m





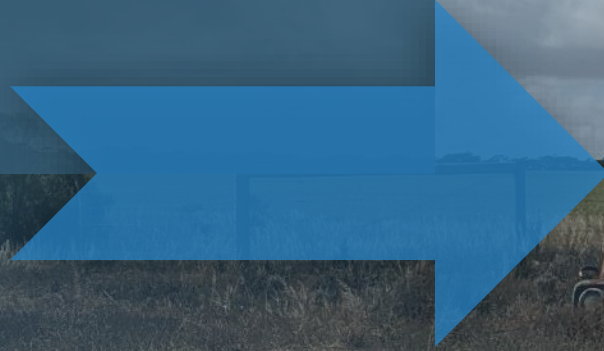
# Rocky Gully REE Next Steps

- ▶ Metallurgical sighter test work underway at ANSTO on historic drill material
- ▶ Plans before the end of 9 month option period to execute an aircore drilling program
- ▶ Opportunity for resource program to follow
- ▶ Carbonatite hosted REE-Nb - review of historic geophysical modelling





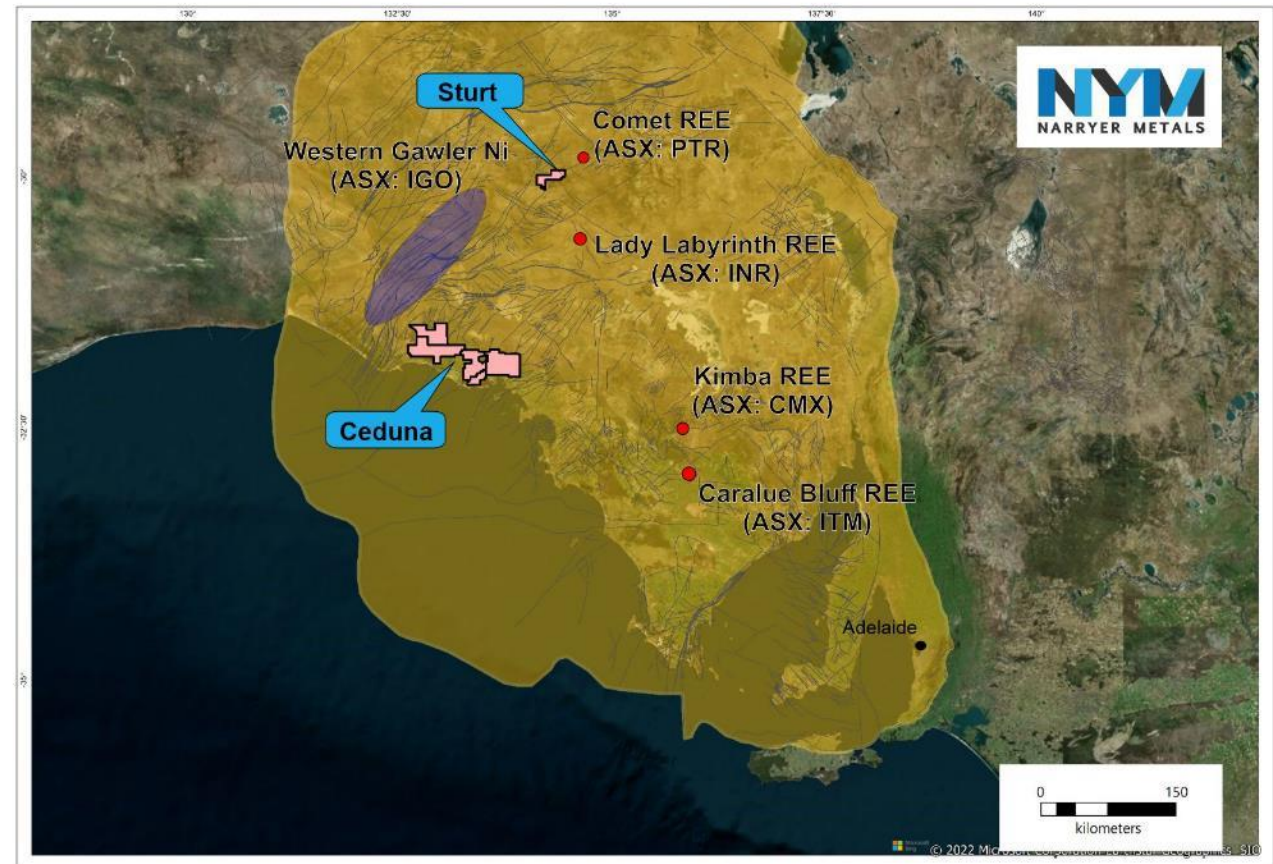
# Sturt and Ceduna Ni-Cu-Co-PGE-REE Projects, SA





# Ceduna & Sturt, SA Ni-Cu-Co-PGE-REE

- ▶ Two areas targeting magmatic hosted Ni-Cu-Co-PGE and Ionic Clay REE mineralisation in Gawler Craton, South Australia
- ▶ M-UM intrusive sited along major tectonic structures
- ▶ Previous exploration of NYM ground identifies anomalous Ni sulphides and PGE's which remain inadequately test<sup>1</sup>.
- ▶ IGO (Western Areas) identifies West Gawler as major Ni play
- ▶ Recent exploration of Gawler Craton shows REE discovery in similar geological setting to NYM
  - ▶ Comet discovery of Petrathem (ASX:PTR)
  - ▶ Lake Labyrinth discovery of Indiana Resources (ASX:IDA)
  - ▶ Caralue Bluff of Itech Minerals (ASX:ITM)
  - ▶ Kimba Prospect of Chemx Materials (ASX:CMX)

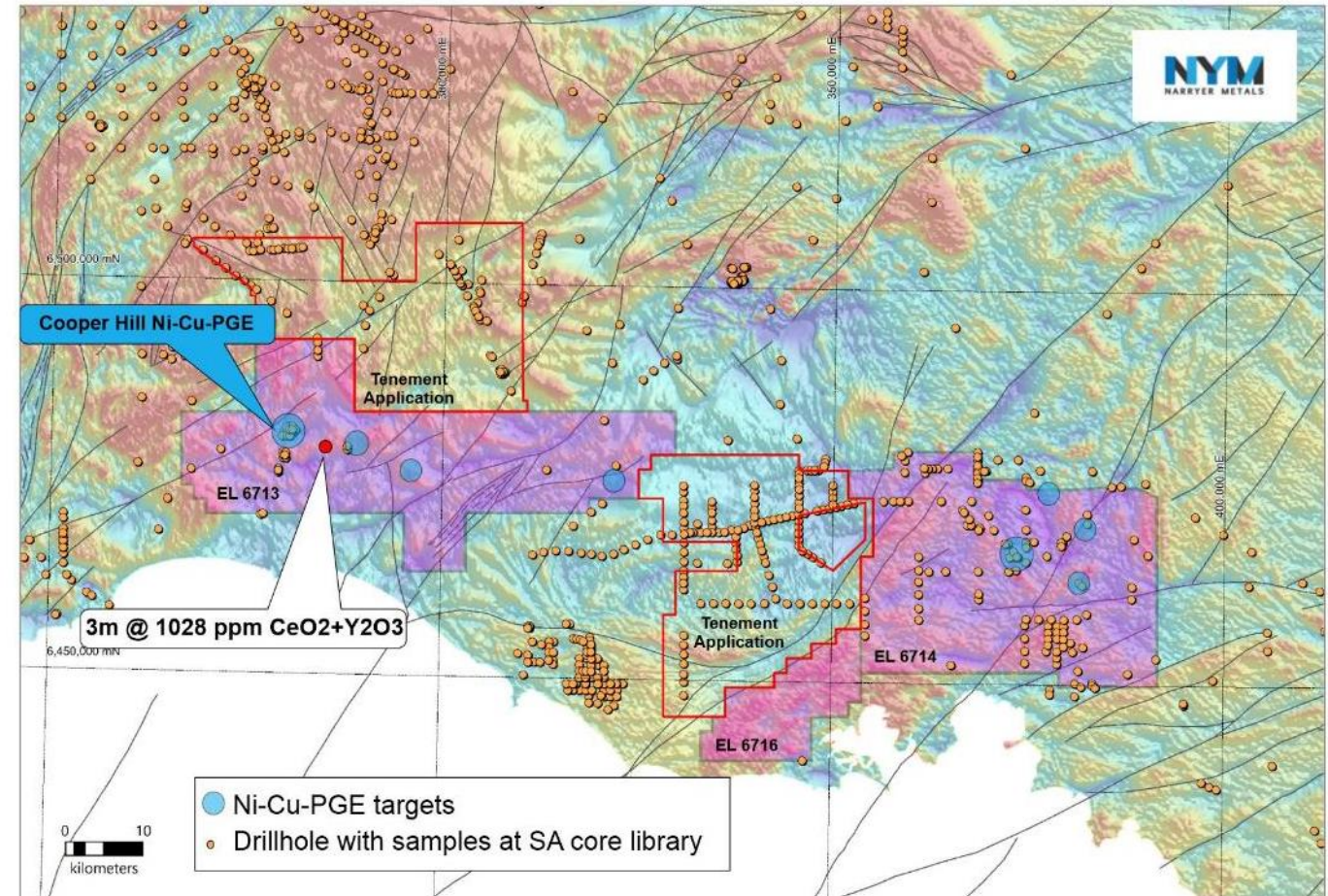


<sup>1</sup> NYM : ASX announcement 26 May 2022



# Ceduna, SA Ni-Cu-Co-PGE-REE

- ▶ ~3200km<sup>2</sup> of prospective tenure
- ▶ M-UM intrusive sited along major tectonic structures
- ▶ Eight key Ni-Cu-PGE targets
- ▶ Cooper Hill a priority PGE target, with PGE mineralisation in gabbro's identified in previous RAB drilling<sup>1</sup>
- ▶ Previous drilling geochemistry also shows anomalous REE (including Ce + Sc) in limited REE assays
- ▶ New, cost-effective exploration initiative to test for REE in > 370 previously untested drill holes from samples at SA Core Library near completion - Lab assays pending

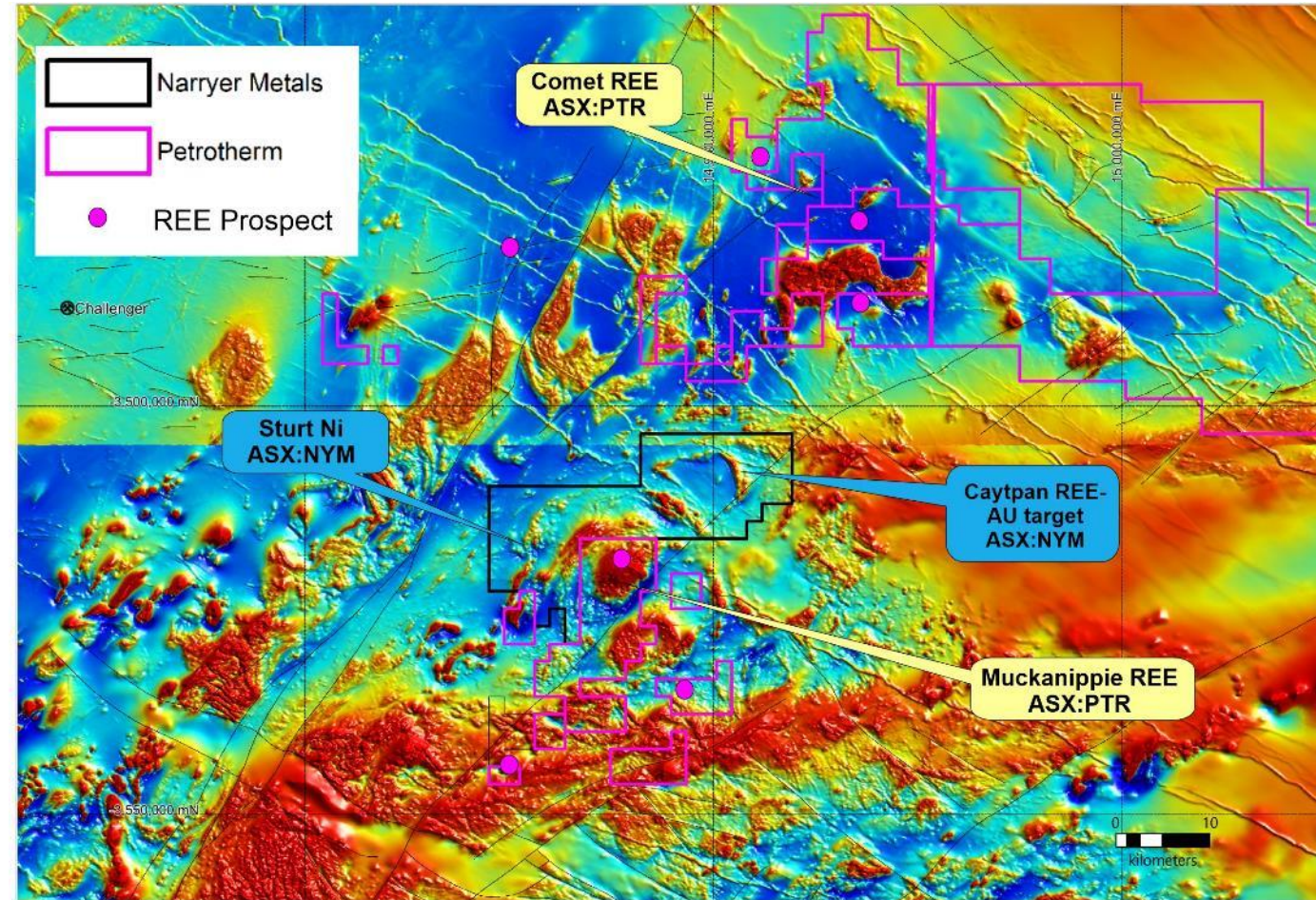


<sup>1</sup> NYM : ASX announcement 26 May 2022



# Sturt, SA Ni-Cu-Co-PGE-REE

- ▶ Approximately 280km<sup>2</sup> of prospective tenure in Central Gawler
- ▶ 30km SE of Petrathern (PTR) major Comet ionic clay REE discovery and adjacent to Muckanippie REE Project.
- ▶ PTR Comet and Muckanippie prospect areas show similar intrusive magmatic complex related to REE
- ▶ Narryer Metals tenement contains layered “Ring Like” intrusive at Claypan Dam REE-Au Prospect never tested by drilling
- ▶ Planned RAB program at Claypan Dam - Native title negotiations underway
- ▶ Sturt project also prospective for Ni-Cu-PGE, with untested EM conductor





# Six Month Catalysts to Drive Shareholder Value



UNDERWAY



Milly Milly EM and magnetics completed

Drilling underway



UNDERWAY



Taccabba Well chromite bands for PGEs

Drilling Underway



UNDERWAY



Mapping / rock chip sampling continues of new identified M-UM complex at Taccabba

EM now planned

RAB planned April/May 2023



UNDERWAY



Rocky Gully metallurgy - Jan 2023

Planning of aircore drilling program Q1, 2023



UNDERWAY



Ceduna and Sturt (SA) testing of >400 historic drillholes for REE - lab assays pending



ON TRACK



Ceduna RAB Drilling of PGE target at Cooper Hill and REE targets - Q1, 2023



ON TRACK



Sturt REE drilling for Q2, 2023







## Contact Details

Dr Gavin England  
Managing Director

[gavin@narryer.com.au](mailto:gavin@narryer.com.au)  
+61 8 9322 7600

Investor Relations  
Evy Litopoulos - ResolveIR

[evy@resolveir.com](mailto:evy@resolveir.com)

For more info:  
[www.narryer.com.au](http://www.narryer.com.au)

ASX:NYM