



Botala Energy ltd

EMPOWERING
PROGRESS

BOTALA ENERGY LTD

2022 AGM Presentation 23 November

Kris Martinick - CEO

Disclaimer



This document contains a summary of information about Botala Energy Ltd (ACN 626 751 620) (Botala Energy or Company) and its activities that is current as at the date of this document.

Not a disclosure document

The information in this document is general in nature and does not purport to be complete or to contain all the information which a prospective investor may require in evaluating a possible investment in Botala Energy and is not a prospectus or disclosure document for the purpose of Chapter 6D of the Corporations Act 2001 (Cth) (Corporations Act) and has not been lodged with the Australian Securities and Investments Commission. This document has been authorised for release by the Board of Botala Energy. This document does not constitute or form part of any invitation, offer for sale or subscription, or any solicitation for any offer to buy or subscribe for any securities.

No liability

The information contained in this document has been prepared in good faith by Botala Energy, however no guarantee representation or warranty expressed or implied is or will be made by any person (including Botala Energy and its affiliates and their directors, officers, employees, associates, advisers and agents) as to the accuracy, reliability, correctness, completeness or adequacy of any statements, estimates, options, conclusions or other information contained in this document.

To the maximum extent permitted by law, Botala Energy and its affiliates and their directors, officers, employees, associates, advisers and agents each expressly disclaims any and all liability, including, without limitation, any liability arising out of fault or negligence, for any loss arising from the use of or reliance on information contained in this document including representations or warranties or in relation to the accuracy or completeness of the information, statements, opinions, forecasts, reports or other matters, express or implied, contained in, arising out of or derived from, or for omissions from, this document including, without limitation, any financial information, any estimates or projections and any other financial information derived therefrom.

Statements in this document are made only as of the date of this document unless otherwise stated and the information in this document remains subject to change without notice. No responsibility or liability is assumed by Botala Energy or any of its affiliates for updating any information in this document or to inform any recipient of any new or more accurate information or any errors or mis-descriptions of which Botala Energy and any of its affiliates or advisers may become aware.

Oil and Gas Reporting

The information in this document that relates to petroleum or gas reserves, contingent resources or prospective resources for the projects in which Botala Energy has acquired tenure over was released in the Company's prospectus lodged with ASIC on 16 May 2022 in respect of its initial public offer of shares on ASX. Botala Energy confirms that it is not aware of any new information or data that materially affects the information in this document.

Nature of Petroleum (Gas) Exploration Risks

This document does not purport to be all-inclusive or to contain all the information that you or any other party may require to evaluate the prospects of Botala Energy. The licences of Botala Energy as described in this document are at various stages of exploration, and potential investors should understand that petroleum exploration and development are high-risk undertakings. There can be no assurance the exploration and development of the licences, or any other licences that

may be acquired in the future, will result in the discovery of an economic resource. Even if an apparently viable deposit is identified, there is no guarantee that it can be economically exploited.

Forward looking statements

Certain information in this document refers to the intentions of Botala Energy, but these are not intended to be forecasts, forward looking statements or statements about the future matters for the purposes of the Corporations Act or any other applicable law. The occurrence of the events in the future are subject to risk, uncertainties and other actions that may cause Botala Energy's actual results, performance or achievements to differ from those referred to in this document. Accordingly, Botala Energy and its affiliates and their directors, officers, employees and agents do not give any assurance, or guarantee, representation or warranty that the occurrence of these events referred to in the document will actually occur as contemplated, or at all, and nothing in this presentation should be relied upon as a promise or representation, as to the future condition of the Company's business, projects and operations.

Statements contained in this document, including but not limited to those regarding the possible or assumed future costs, performance, dividends, returns, revenue, exchange rates, potential growth of Botala Energy, industry growth or other projections and any estimated company earnings are or may be forward looking statements. Forward-looking statements can generally be identified by the use of words such as 'project', 'foresee', 'plan', 'expect', 'aim', 'intend', 'anticipate', 'believe', 'estimate', 'may', 'should', 'will' or similar expressions. These statements relate to future events and expectations and as such involve known and unknown risks and significant uncertainties, many of which are outside the control of Botala Energy. Actual results, performance, actions and developments of Botala Energy may differ materially from those expressed or implied by any forward-looking statements in this document. Recipients must make their own assessment about the likelihood of a matter, about which a forward-looking statement is made, occurring.

Such forward-looking statements speak only as of the date of this document. There can be no assurance that actual outcomes will not differ materially from these statements. To the maximum extent permitted by law, Botala Energy and each of its affiliates and their respective directors, officers, employees, agents, associates and advisers:

- Do not make any representation or warranty, express or implied, as to the accuracy, reliability or completeness of the information in this document, or likelihood of fulfilment of any forward-looking statement or any event or results expressed or implied in any forward-looking statement;
- Disclaim all responsibility and liability for these forward-looking statements (including, without limitation, liability for negligence); and
- Except as required by law or regulation (including the ASX Listing Rules), do not assume any obligation to provide any additional or updated information whether as a result of a change in expectations or assumptions, new information, future events or results or otherwise.

Reliance on presentation

A recipient of this presentation must make their own assessment of the matters contained herein and rely on their own investigations and judgement in making an investment in the Company. This presentation does not purport to contain all of the information a recipient of this presentation requires to make an informed decision whether to invest in the Company. Specifically, this presentation does not purport to contain all the information that investors and their professional advisers would reasonably require to make an informed assessment of the Company's assets and liabilities, financial position and performance, profits, losses and prospects.

Not a recommendation or financial product advice

This document does not constitute financial product advice or take into account your investment objectives, taxation situation, financial situation or needs. This document consists purely of factual information and does not involve or imply a recommendation of a statement of opinion in respect of whether to buy, sell or hold a financial product. Any person who intends to subscribe for securities must conduct their own investigations, assessment and analysis of the Company and its operations and prospects and must base their investment decision solely on those investigations and that assessment and analysis.

An investment in Botala Energy is considered to be speculative in nature. Before making any investment decision in connection with any acquisition of securities, investors should consult their own legal, tax and/or financial advisers in relation to the information in, and action taken on the basis of, this document.

No other material authorised

Botala Energy has not authorised any person to give any information or make any representation in connection with any proposed offer of securities. A prospectus investor cannot rely upon any information or representations not contained in this document.

Information in this document is confidential

This document and the information contained within it are strictly confidential and are intended for the exclusive benefit of the persons to whom it is given. It may not be reproduced, disseminated, quoted or referred to, in whole or in part, without the express consent of Botala Energy. By receiving this document, you agree to keep the information confidential, not to disclose any of the information contained in this document to any other person and not to copy, use, publish, record or reproduce the information in this document without the prior written consent of Botala Energy, which may be withheld in its absolute discretion.

Acceptance

By attending an investor presentation or briefing, or accepting, accessing or reviewing this document you acknowledge and agree to the "Disclaimer" as detailed above.



A New Dawn for Future Industries

EMPOWERING PROGRESS

Our Vision

To be a profitable energy company
providing Botswana with access to
affordable and reliable energy.





CORPORATE OVERVIEW

Botala Energy Overview

Botala listed on ASX in July 2022. Currently focused on flow-testing and drilling 2 exploration wells.

Use of funds:

- Serowe-3 flow testing programme,
- Two exploration wells; and,
- Solar Finland MOU.

Capital structure

Current Share Price ¹	\$0.13
Market Capitalisation	\$18 million
Shares on Issue	136,189,594

Top 5 Shareholders²

Shareholder	Shareholding	Ownership
Wolf Gerhard Martinick (Chair)	31.5m	23.1%
Pure Hydrogen Corporation Ltd	27.2m	20.0%
Kris Francis Martinick (CEO)	11.6m	8.6%
Corpserv Pty Ltd (CFO)	5.9m	4.3%
Martinick Investments Pty Ltd (Chair)	4.0m	2.9%
Top 20 shareholders	103.7m	76.1%
Board ownership + CEO	55.0m	40.5%

1. As at 21 November 2022

2. As at 21 November 2022

Highlights 2023



Listed on ASX – July 2022

- Raised \$5m to explore and appraise Serowe CBM Project.
- Develop CBM together with solar to become a reliable and affordable producer of “cleaner” energy.
- Botata is operator and owns 70% of the Serowe CBM; PH2 retains 30% and is free-carried until completion of farm-in.



Resource Upgrade – Independently certified resource¹ increased to 317bcf (2C) & 8,008 bcf (3C).

- Based on the 5 wells drilled to date.



Exploration Drilling Underway – Serowe-6 drilled to be followed by Serowe-7.



Flow-testing Underway – Serowe-3 flow-testing commissioned.

- Water flow-rate will be used to design commercial pilot programme

¹Independently Certified, Sproule, Gross estimated resource

Exploration & Appraisal

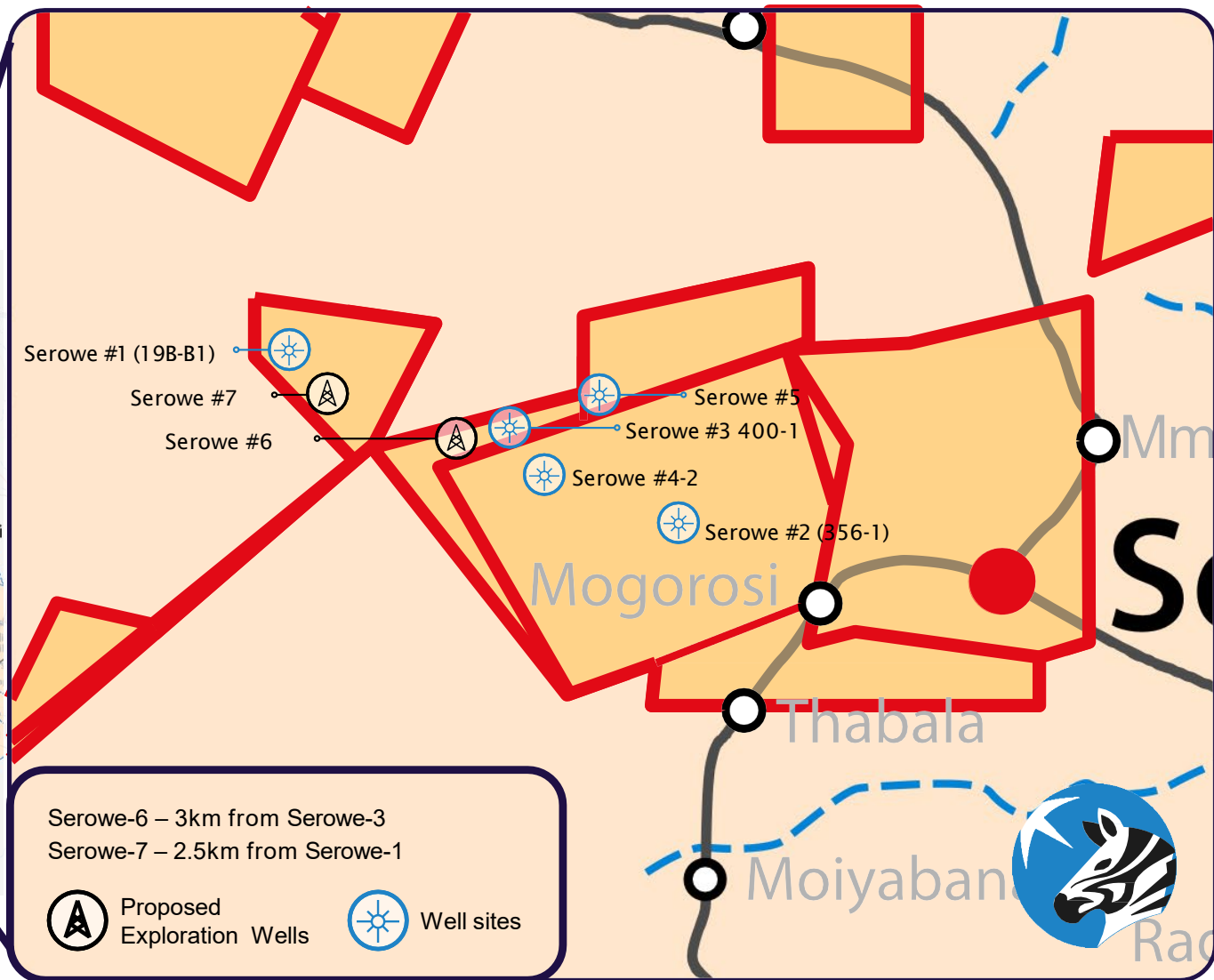
Kalahari Gas Corporation (KGC) awarded contract to ream Serowe-3 well, and drill 2 exploration and 4 pilot wells.

Flow-testing commissioned

The KGC rig busy drilling Serowe-6; to be followed by Serowe-7



2022 Exploration Programme



Well #	PL#	Rationale
6	400	3km stepout from best well-known gas
7	19B	2.5km stepout from known gas

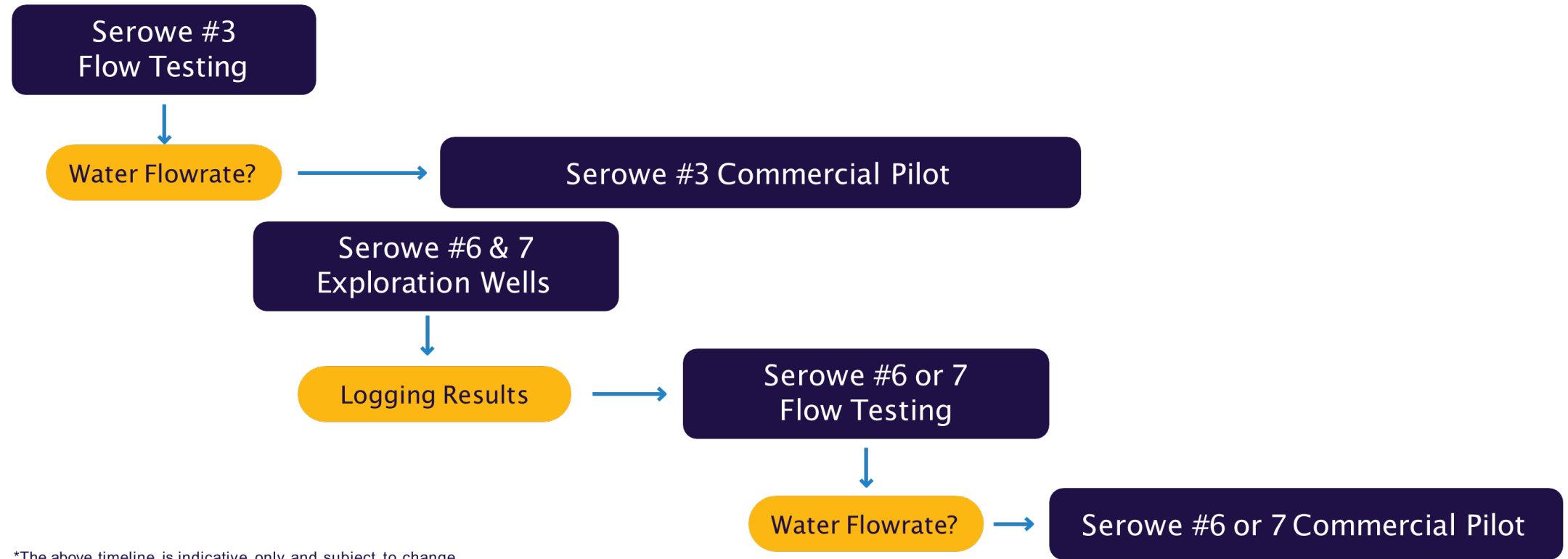
Serowe-3 Flow-testing

- Commissioned 4 Nov after reaming and cleaning well.
- Water production: stabilized.
- Pressure controlled draw-down.



Current Exploration & Appraisal Programme

September/October 2022



*The above timeline is indicative only and subject to change, including based on exploration and flow-testing results.



Binding MoU with Solar Finland

Pursuant to the MoU, the parties' goal is to explore the potential to establish a Joint Venture Limited Liability Company with Solar Finland to setup manufacturing of Salo Solar Panels and distribute their knowledge in solar energy.¹

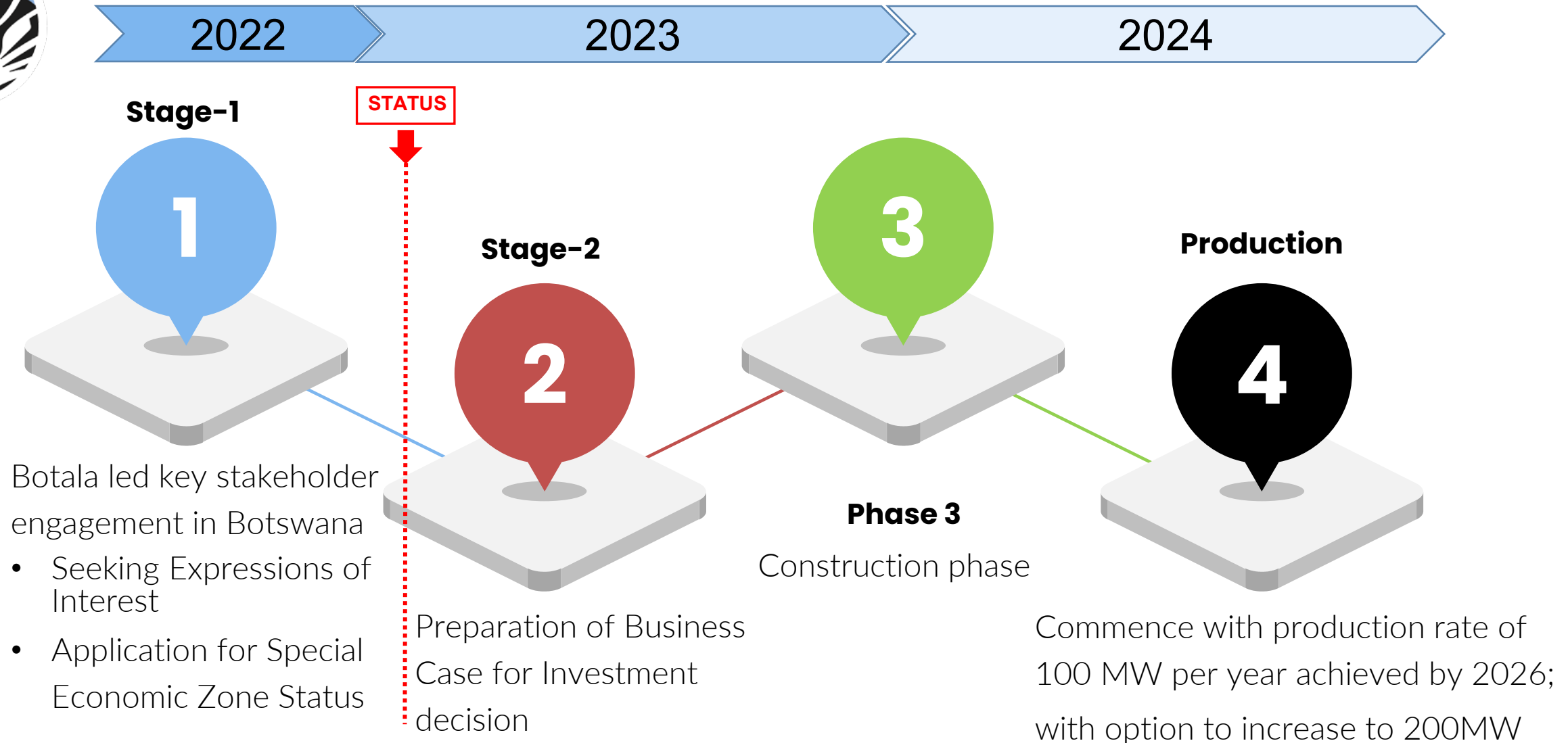


¹Botala Energy reiterates that its renewable energy activities are currently limited to ongoing research and development, which is early stage in nature and it is uncertain whether our proposed renewable energy activities will be successful, as they are dependent on various contingencies, many of which are beyond our control (refer to Botala Energy's ASX announcement dated 7 September 2022).



Solar Panel Manufacturing Project

TIMELINE



EMPOWERING PROGRESS

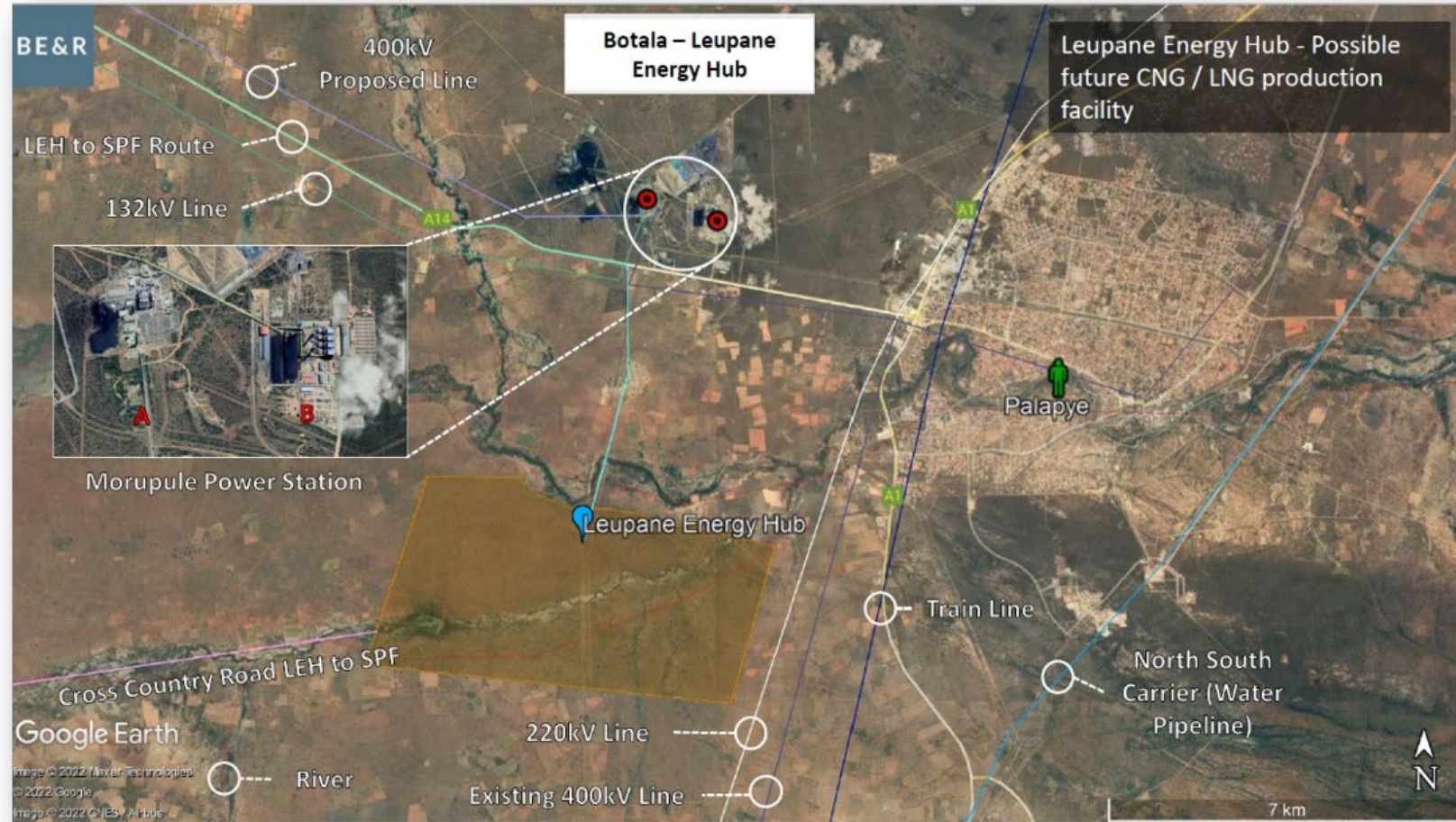
*The above timeline is indicative and subject to change as negotiations continue and the business case is developed. Funding of the work required to develop the business case and continue negotiations are taken from the use of funds outlined in the prospectus.



Development Engineering and Early Stage Renewables

Botla engaged engineering consultants BE&R to review various early-stage development options and concepts for the project including:

- Serowe Energy Hub of 110 ha: proposal for an initial ~20MW solar/gas hybrid electricity plant to feed into a nearby substation in Serowe.
- Early-Stage Agriculture: as part of the process to manage water produced from production wells.



Refer to Sections 3.7 and 4.1(q) of Botla's Prospectus dated 16 May 2022 for further details.



Conceptual 3-Phase Approach

2023

~2030

Phase 0

- Develop Serowe cbm resource and 20MW gas and solar electricity hybrid plant in Serowe Energy Hub

Phase 1

- Leupane Energy Hub and Industrial Park
- 150MW gas & solar electricity
- Batteries
- LNG and CNG
- Water

Phase 2

- Leupane Energy Hub and Industrial Park
- 400MW gas & solar electricity
- Batteries
- LNG and CNG
- Water

Phase 3

- Leupane Energy Hub and Industrial Park
- 700MW gas & solar electricity
- Batteries
- LNG and CNG
- Water

Leupane Industrial Park¹

Solar Panel manufacturing plant

Solar Panel manufacturing plant
Gas support industry

Solar Panel manufacturing plant
Gas support industry

Hydrogen, urea, ammonia
R&D, training

Agriculture

¹ Please refer to Section 3.7 of Botala Energy's prospectus dated 16 May 2022 for further details in respect to the Company's proposed Leupane Energy & Industrial Hub.

Botala Energy Ltd

Ke A Leboga

Thank You

botalaenergy.com

info@botalaenergy.com

