



ASX ANNOUNCEMENT

25 November 2022



Hines Hill REE Drilling Completed

HIGHLIGHTS

- ❖ Maiden aircore drilling program completed at the Hines Hill REE Project
- ❖ 49 drillholes for 1,861 metres were drilled, ranging in depth from 8 metres to 92 metres
- ❖ Geochemical sampling program completed over the remainder of highlighted magnetic features at Hines Hill, and also at the Company's 100%-owned North Kellerberrin project, which adjoins Hines Hill to the west
- ❖ 716 (3m composite) drill samples and 1,044 geochemical soil samples have been submitted and registered in at ALS Global Laboratory

White Cliff Minerals Limited (**White Cliff** or the **Company**) is pleased to provide an update on the Company's Hines Hill REE project in the Wheatbelt region, WA (**Figure 2**), where aircore drilling (**Figure 1**) and further geochemical sampling over the remaining magnetic features has been completed. The Company has also undertaken a maiden geochemical sampling program over the North Kellerberrin REE Project.



Figure 1: Strike Drilling Morooka based Aircore rig on site at Hines Hill REE Project

Commenting on the progress, White Cliff Technical Director Ed Mead said:

"It is great to get drilling at Hines Hill, as this is how you find orebodies, and we also took the opportunity to expand the geochemical sampling program at Hines Hill and over the new North Kellerberrin REE project at the same time, and now look forward to the return of assay results. The Yinnetharra high resolution magnetic and radiometric survey is progressing well and we hope to be back on the ground at Yinnetharra in early December."

ASX:WCN

wcminerals.com.au

White Cliff Minerals Limited
ABN 22 126 299 125

Level 8, 99 St Georges Tce, Perth WA 6000
PO Box 5638 St Georges Tce, Perth WA 6831

T + 61 8 9486 4036
F + 61 8 9486 4799

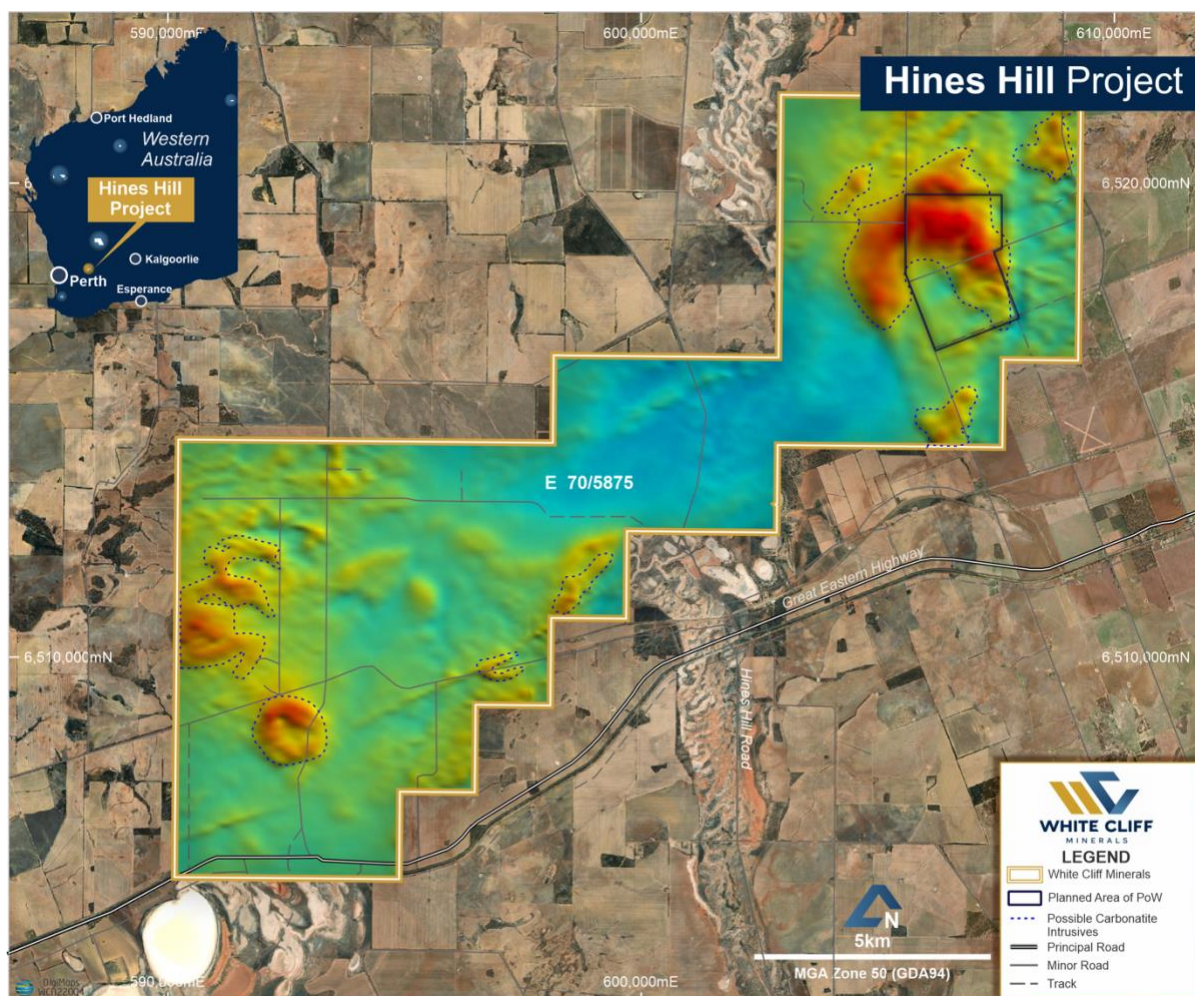


Figure 2: Li/REE Project location map in Western Australia

Hines Hill - REE Project

The Hines Hill REE project consists of a single tenement (**Figure 2**), within the wheatbelt region, located about 200km east of Perth on the Great Eastern Highway. The tenement area is 128Km² covering extensive grain growing properties.

Previous sampling by White Cliff targeted two magnetic features tentatively interpreted to be carbonatite intrusives, although they may represent differential non-carbonatite intrusives (**Figure 2 and 3**).

A maiden aircore drilling program has completed over the north east magnetic feature with 49 drillholes for 1,861 metres drilled, ranging in depth from 8 metres to 92 metres. 716 (3 metre composite samples) were taken.

Further roadside conventional geochemical sampling was completed, with 231 samples on a nominal 200m spacing.

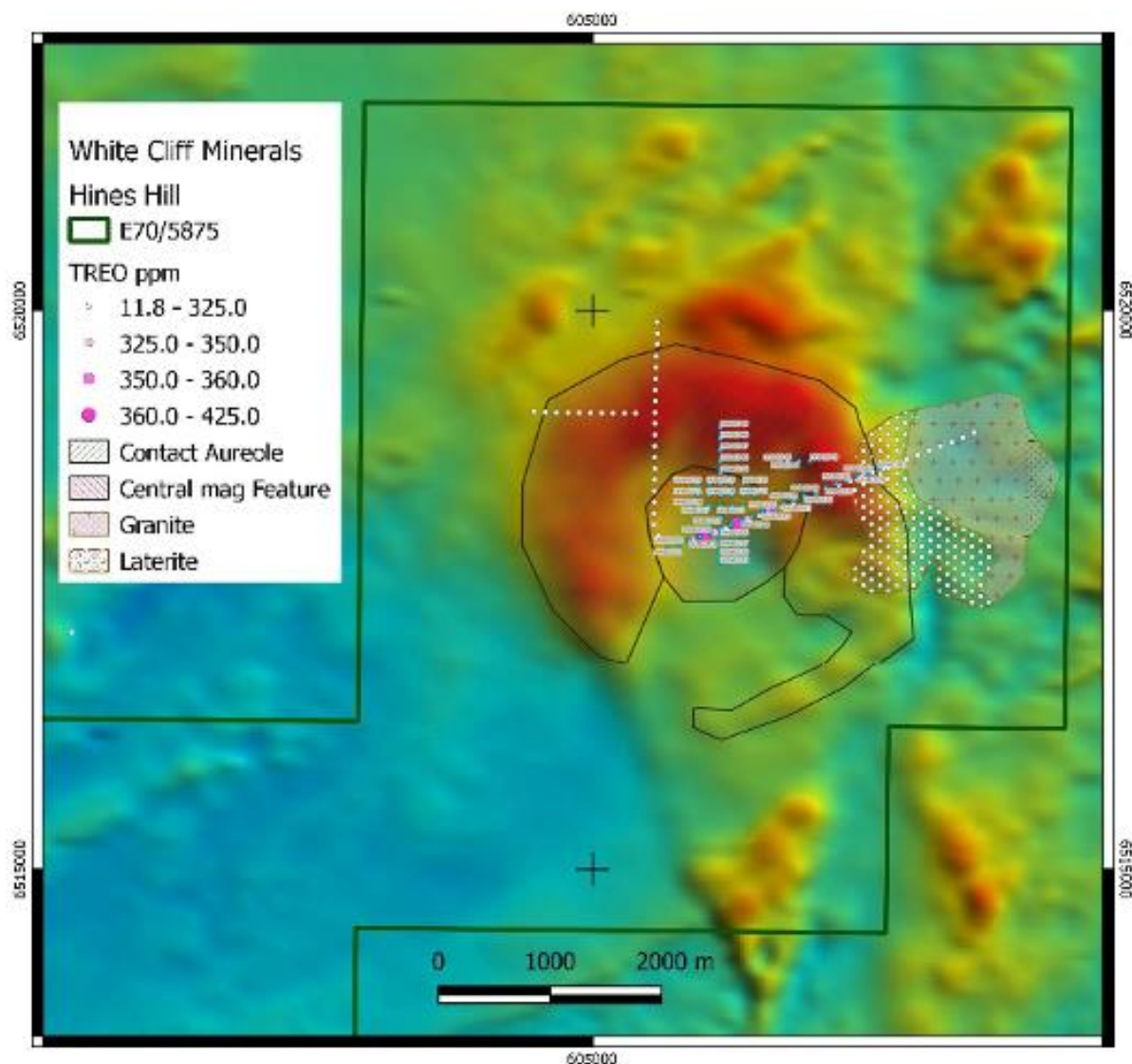


Figure 3: Hines Hill drill hole locations from Aircore drill program, with sampling results overlaid on magnetic data and geology, northeast area. (See ASX release dated 5 April 2022)

North Kellerberrin - REE Project

ELA 70/6136 was applied for on 18 May 2022 and is contiguous to the west of Hines Hill. The application covers 136 blocks (~400km²) and is prospective for REE.

A first pass roadside conventional geochemical sampling program has been completed, with 813 samples on a nominal 200m spacing.

UPCOMING NEWSFLOW

November: Annual General Meeting

November/December: Surface sampling program, Diemals REE/Li project

December: Completion of High-resolution magnetics/radiometrics survey at Yinnetharra REE/Li project

December: Field trip looking at new targets at Yinnetharra

December: Reconnaissance field trip at Lake Tay REE project

December: Planning for maiden drill program at Yinnetharra

December: Results of Hines Hill maiden drill program

ENDS

Further Information:

Dan Smith
Director
+61 8 9486 4036

Edward Mead
Director
+61 8 9486 4036

This announcement has been approved by the Board of White Cliff Minerals Limited.

Competent Persons Statement

The Information in this report that relates to exploration results, mineral resources or ore reserves is based on information compiled by Mr Allan Younger, who is a Member of the Australasian Institute of Mining and Metallurgy. Mr Younger is an employee of the company. Mr Younger has sufficient experience which is relevant to the style of mineralisation and type of deposits under consideration and to the activity that he is undertaking to qualify as a Competent Person as defined in the 2012 edition of the 'Australian Code for Reporting Exploration Results, Mineral Resources and Ore Reserves' (the JORC Code). Mr Younger consents to the inclusion of this information in the form and context in which it appears in this report.

White Cliff confirms that it is not aware of any new information or data that materially affects the information included in the original market announcements. White Cliff confirms that the form and context in which the Competent Person's findings are presented have not been materially modified from the original market announcements.