

COPPER SEARCH

ASX:CUS

The Peake project: a litho-structural approach

Duncan Chessell

CEO & Exploration Manager

South Australian Exploration
and Mining Conference
2nd December 2022



COMPANY OVERVIEW

Our Mission

Copper Search Ltd (CUS) is a junior mineral explorer with projects prospective for in demand battery metals focussing on copper. CUS aims to create value for shareholders through large scale discovery success.

Market Cap

\$16 m

Top 20 Shareholders

66 %

Share Price

\$0.20

Cash on hand
(last Quarterly Sept 2022)

\$8.2 m

Shares on issue

82.4 m

Active Project

Gawler Craton

Ground Position

5,560 km²

**Figures current as of 7/11/2022*

THE TEAM

The Copper Search team is led by CEO Duncan Chessell and a board with proven discovery success.

Duncan Chessell, CEO

Geologist with over 20 years of experience in business and mineral exploration. Duncan has worked in the Northern Territory, Papua New Guinea, Alaska and has made several gold discoveries in the Tarcoola area of the Gawler Craton – South Australia. He is also a triple Mt Everest summiteer. Previous directorships held in the mining and not-for-profit sectors, he is currently the non-executive Chairman of Resolution Minerals Ltd (ASX: RML).



Board

Chris Sutherland, Non-Executive Chairman

Chris is an engineer with over 20 years of business experience. He was Managing Director of Programmed from January 2008 until his retirement in September 2019. Programmed was a major publicly listed ASX company until October 2017 when it was acquired for an enterprise value of over \$1 billion.

Peter McIntyre, Non-Executive Director

Peter McIntyre is an engineer with over 30 years of experience in the minerals industry in exploration and production and held senior roles in WMC. He established and was Managing Director of Extract Resources Limited which discovered the world-class Husab uranium deposit in Namibia which was ultimately acquired via a takeover for \$2.3 billion.

Greg Hall, Non-Executive Director

Greg Hall has over 30 years' experience in mine management, global commodities marketing, and CEO and Board roles with resource companies. This includes groups such as WMC, Rio Tinto, Toro Energy and Hillgrove Resources. He is currently Managing Director of Alligator Energy Ltd (ASX: AGE).

Dr Tony Belperio, Non-executive Director

Geologist with over 30 years of experience in the mining industry and an impressive track-record including the discovery of the Prominent Hill Deposit and now mine in the Gawler Craton, South Australia. Former chief geologist for the South Australia Geological Survey and active explorer for over two decades with Demetallica Ltd (ASX: DRM), nee Minotaur Ltd.

Exploration Team

Theo Aravanis, Principal Geophysicist

Theo has over 25 years of mineral exploration experience and works on a consulting basis to Copper Search. Theo spent over a decade as the Chief Geophysicist for Rio Tinto's global exploration group. Theo's expertise spans a wide range of geophysical techniques applied to an enormous variety of mineral systems globally.

John Main, Technical Advisor

Over 35 years of experience in a plethora of deposit types worldwide. John has had a distinguished career which included tenure as the exploration manager America's for Rio Tinto. He provides an independent opinion to the board on the technical aspects and strategies of the exploration team.

Richard Hill, Senior Exploration Geologist

Over 25 years of mineral exploration experience in South Australia, he is credited with the Paris Silver Deposit discovery in the Gawler Craton and has worked across multiple commodities and deposits throughout South Australia.

Stacey Curtis, Senior Exploration Geologist

With seventeen years of experience in the South Australia Geological Survey, she brings extensive government networks and mineral system studies expertise and has strengths in mapping, geochemistry and geochronology.

COPPER SEARCH

PROMINENT HILL
1.4Mt @ 0.90%
(OZL)

OLYMPIC DAM
78.4Mt @ 0.72%
(BHP)

CARRAPATEENA
5.4Mt Cu @ 0.54%
(OZL)

PEAKE PROJECT
(CUS)

The Peake & Denison geological domain was recently recognised as equivalent to the copper-rich Cloncurry District in Queensland via drilling results by neighbouring Demetallica (October 2022)

The Gawler Craton is a world-class mining district in South Australia and is endowed with over 100 million tonnes of copper and 110 million ounces of gold. Copper Search's Peake Project covers over 5,560 sq km giving the company a strong ground position in the district.

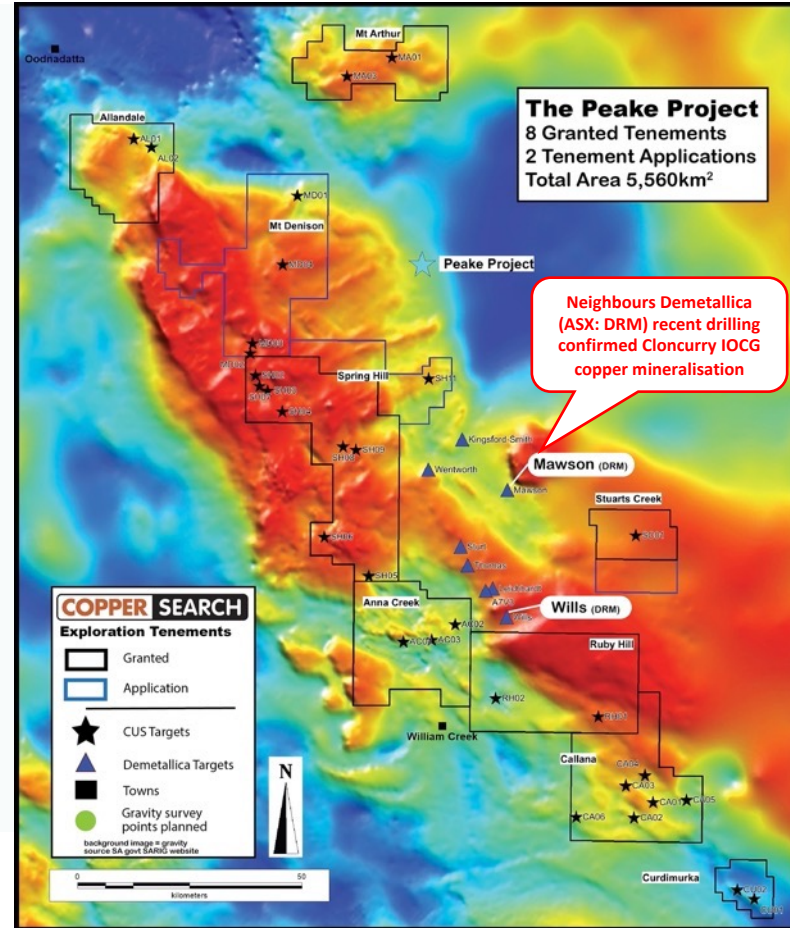
Adelaide

THE PEAKE PROJECT – SOUTH AUSTRALIA

The **Peake Project** is located in the NE Gawler Craton, prospective for large-scale copper (IOCG) deposits. Until 2022 the area has been previously overlooked as the age of the potential deposit-forming rocks was different to other IOCG examples in the Gawler Craton. However... in 2022...

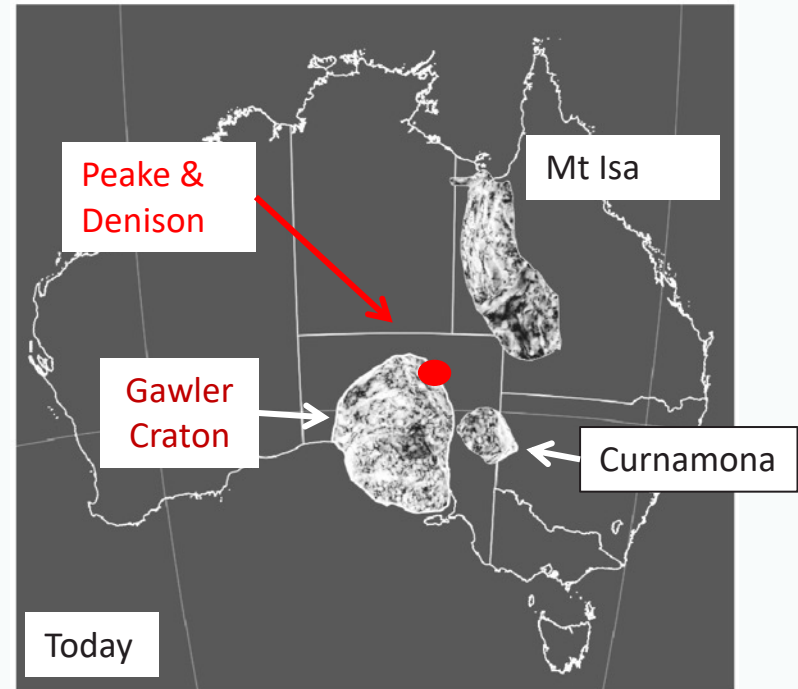
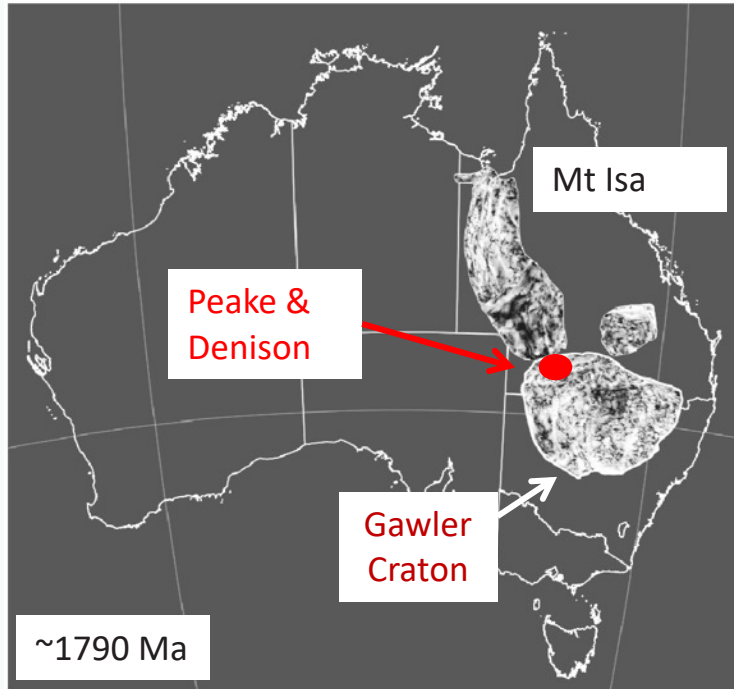
About The Peake Project

- Adjacent explorer Demetallica confirmed prospectivity for Ernest Henry-style IOCG copper mineralisation in drilling (ASX: DRM 5 October 2022)
- **Prospective for Cloncurry age & style of IOCG and ISCG deposits**
- **Over 20 potential shallow drill targets <500m deep**
- **Six deeper drill targets**
- An underexplored region with recent government airborne geophysics surveys has allowed the identification of new opportunities
- A revised exploration strategy completed by the newly formed exploration team, using a mineral systems approach, incorporating multiple big data sets, innovative peer-reviewed emerging techniques, and well-established conventional exploration methods
- Targeted infill geophysics (IP, gravity, ground mag) surveys will inform the final target ranking and refine drill collar locations
- **Three phases of drilling planned** over a 24-month period, supported by ongoing target definition activities and innovation
- **An extensive 6-month drilling program to commence in Q1, 2023**



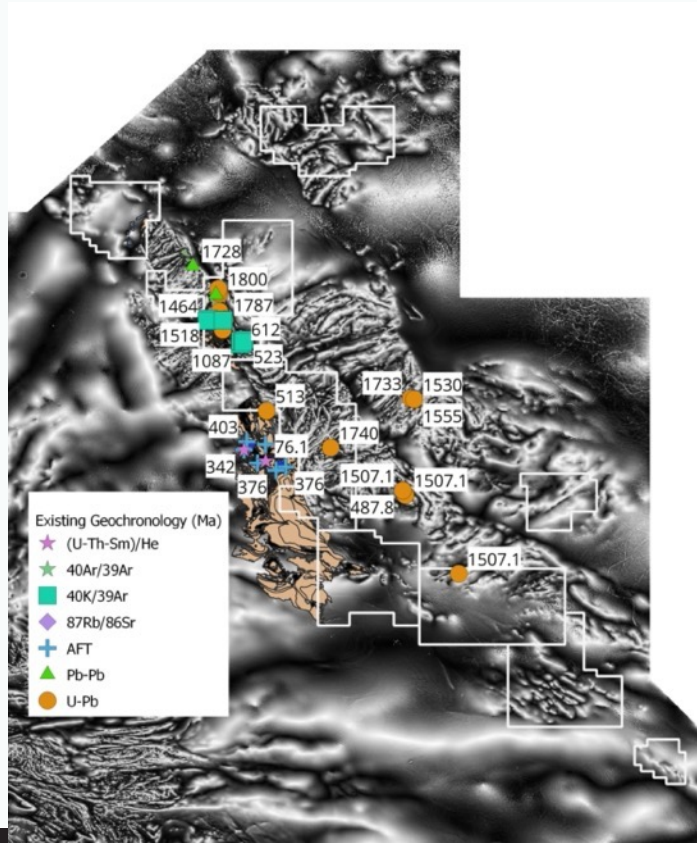
CORRELATION TO MT ISA DOMAIN

Tectonic reconstructions suggest that the Nawa Domain (a.k.a. Peake & Denison) once formed a contiguous belt with the Mt Isa Domain that hosts Paleoproterozoic Pb-Zn-Ag and Mesoproterozoic IOCG deposits, Betts et al, 2010.



From "Crustal boundaries of the marginal terranes of the Northern Gawler Craton"
- Peter Betts, Robin Armit, Graham Baines, David Giles, Bruce Schaefer (2010).

GEOCHRONOLOGY (AGE) OF THE PEAKE PROJECT



- U-Pb and Pb-Pb zircon geochronology, as well as a range of thermochronology methods (Ar-Ar, K-Ar, Rb-Sr, Apatite Fission Track) reveal multiple geological events in the Peake Project
- Palaeoproterozoic basement deposited c. 1800-1775 Ma
- Metamorphism and magmatism during the Kimban Orogeny (1740-1690 Ma)
- **Mesoproterozoic magmatism (c.1530 Ma) and intense Na-Ca-Fe alteration +/- Cu (c. 1550-1490 Ma) directly links P&D with similar systems in the Mt Isa / Cloncurry District**
- Magmatism and thermal resetting during the Cambrian Delamerian Orogeny
- Low T methods record Phanerozoic uplift events

No known Hiltaba Suite intrusions, 1590Ma (yet)
- the typical age of major IOCG's in Gawler Craton

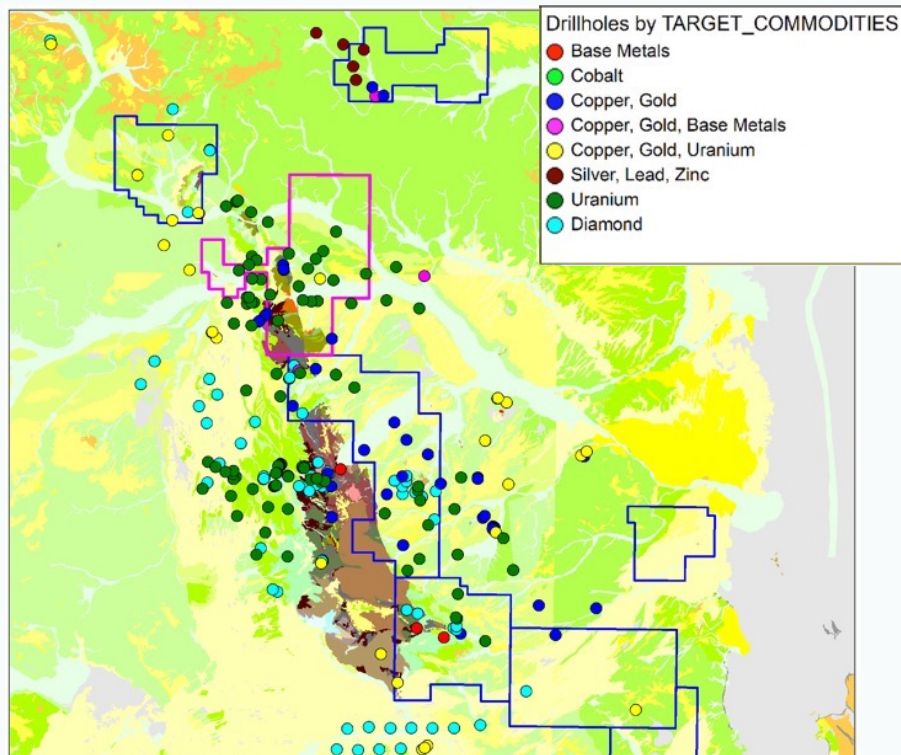
Public available data, sourced from the South Australian Government SARIG website

UNDER EXPLORED - HISTORICAL EXPLORATION STATISTICS

Sample type		Peake & Denison Domain		CUS Peake Project	
		Holes / Samples	Total Metres	Holes / Samples	Total Metres
Drilling	RAB/ Air Core	106	7,570	8	904
	RC	44	10,700	21	3,248
	Rotary Mud	26	4,402	26	4,784
(Basement)	Diamond Core	58	19,550	28	9,631
Surface	Stream Seds	1,245	-	326	-
	Soils	622	-	47	-
	Rock chips	312	-	86	-

Near-miss analysis of historical drill core underway

LARGE EXPLORATION SPACE - DRILL COLLARS BY COMMODITY



5,560 km² project area

Under-explored

28 basement drill intersections

= **1 drill hole per 200 km²**

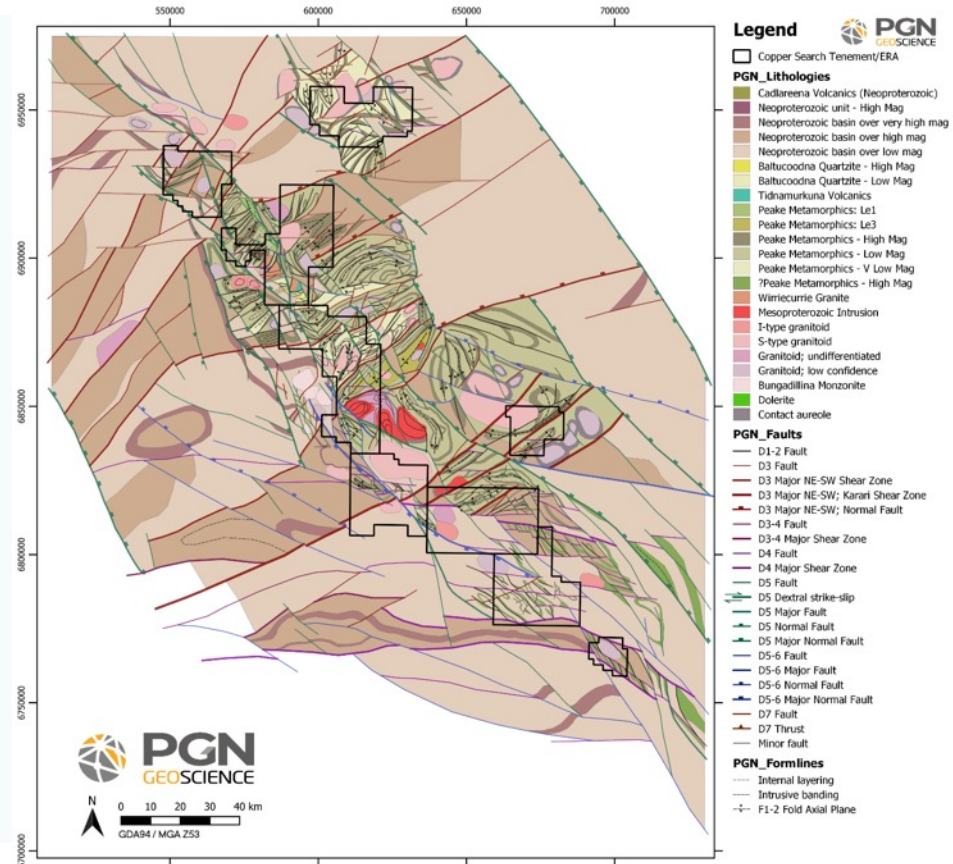
1 soil sample per 120 km²

Large exploration space

Public available data, sourced from the South Australian Government SARIG website

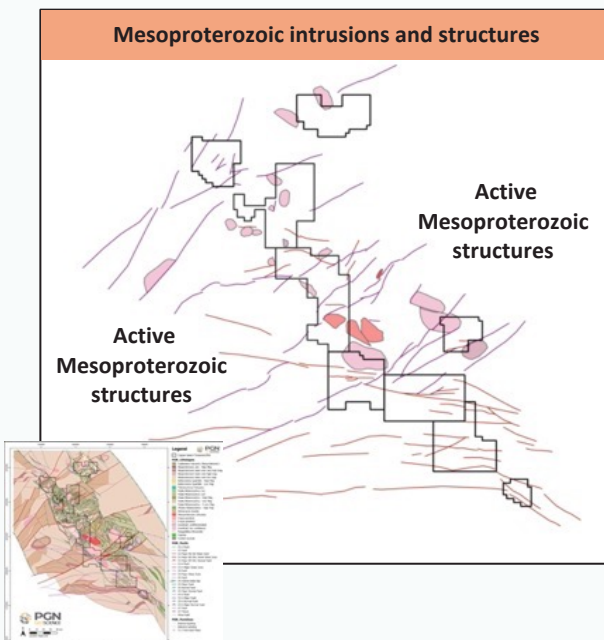
LITHOSTRUCTURAL ANALYSIS SUMMARY – NARROW THE FOCUS

- The 2019 SA Government funded Gawler Craton Airborne Survey (GCAS) flown at 200m flight line spacing allowed much greater detailed interpretation to be undertaken than previously possible.
- A litho-structural interpretation of the Peake & Denison Ranges was completed by PGN Geoscience, using a combination of various data sources, including high-resolution geophysical datasets and available geologic, geochronologic, and drillhole data.
- 73 intrusions identified
- Paleo-Mesoproterozoic inliers are largely buried beneath Neoproterozoic & younger basin cover with limited outcrop.
- Seven generations of structures indicate a protracted deformation history with multiple reactivation events from the Paleoproterozoic to Cambrian.
- **Multiple structural and lithological factors present a favourable setting for potential IOCG mineralisation.**



PRIMARY TARGETING METHODOLOGY – RANKING SYSTEM

The most significant conclusion of the 2022 project review narrowed the exploration search space to structural corridors associated with deep-tapping Mesoproterozoic faults and Mesoproterozoic intrusive rocks, which have been demonstrated to be crucial to forming IOCG deposits in other districts (e.g. Olympic Domain, Gawler Craton, Cloncurry District in QLD).



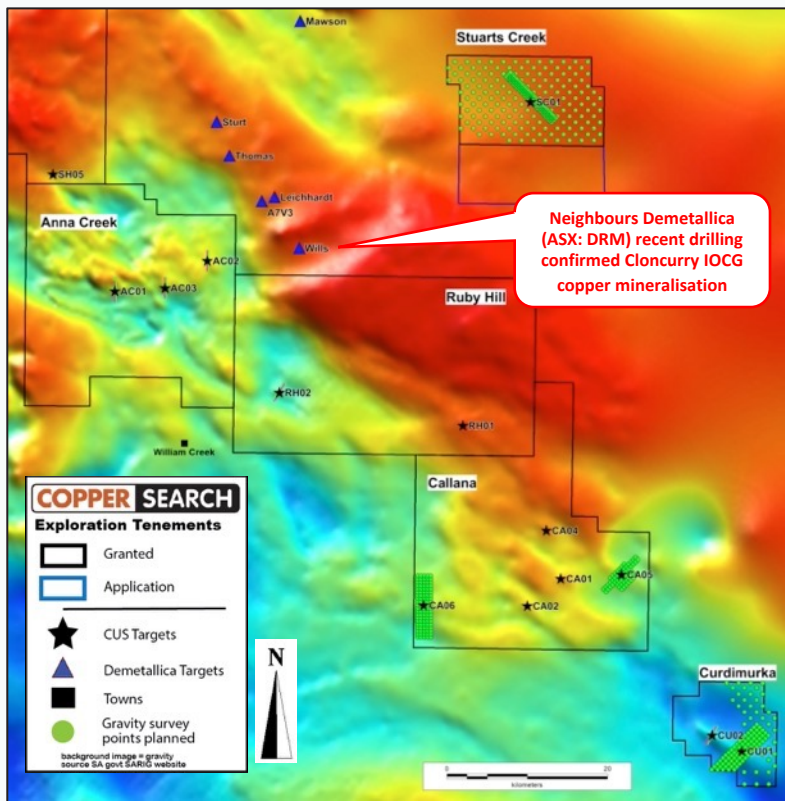
Proximity to Mesoproterozoic (the right age) structures and intrusions heavily increases the target ranking score and is the best setting for IOCGs to be emplaced and hence best corridors to focus exploration efforts.

CUS Target ranking score / 100%

- ✓ Proximity to the right age structures
- ✓ Magnetic anomaly
- ✓ Gravity anomaly
- ✓ IP anomaly
- ✓ Depth to target
- ✓ Logistics & costs

Copper Search will continue to innovate and will be trialling cutting-edge peer-reviewed emerging exploration techniques, such as stable Cu isotope hydro-geochemistry, which is having success in the Cloncurry IOCG District and incorporating the results into our target ranking methodology.

PHASE ONE TARGETS – Southern half of the Peake Project



1. Complete minor infill geophysics surveys Q4, 2022 and re-score targets against benchmarks of known IOCGs e.g. Ernest Henry ranks 100%
2. Drill validated high-scoring targets Q1, 2023

Target	Depth	Score %	Geophysics planned 2022
Ernest Henry	50	100	example - known IOCG Mine owned by Evolution Mining (ASX: EVN)
AC01	260	78	Induced Polarisation (IP)
AC02	300	80	Induced Polarisation (IP)
AC03	250	85	Induced Polarisation (IP)
RH01	300	53	Ground mag
RH02	200	93	Induced Polarisation (IP)
CU01	400	68	Infill gravity, ground mag, IP
CU02	240	80	<i>(all targets require heritage survey)</i>
CA01	300	48	-
CA02	250	63	-
CA04	350	45	-
CA05	400	60	Infill gravity, ground mag
CA06	350	50	Infill gravity, ground mag
SC01	550	45	Broad & infill gravity
SH05	240	45	Induced Polarisation (IP)

SUMMARY

Copper Focus – The Peake Project – Northern Gawler Craton, South Australia

- **5,560km² prospective IOCG ground** position in the emerging Peake & Denison geological domain, **recently confirmed as equivalent to the copper-rich Cloncurry District in Queensland by adjacent explorer Demetallica, intersecting Ernest Henry-style IOCG copper mineralisation in drilling (ASX: DRM 5 October 2022)**
- A detailed review has identified ~20 relatively shallow (<500 m deep) IOCG potential targets and six deeper targets
- A revised exploration strategy completed by the newly formed exploration team, based on a mineral systems approach incorporating multiple big data sets and innovative peer-reviewed emerging techniques, in addition to conventional exploration methods
- Targeted infill (IP and gravity) geophysics surveys have recently commenced and will be completed in late December. The results will inform the final target ranking and refine drill collar locations, allowing for high-confidence targets to be tested and ensure the best use of shareholder funds
- CUS has a strong geoscience team with jurisdictional expertise and a track record of discovery
- A heritage survey is **currently underway** to clear all southern targets for drilling
- **Drilling to re-commence in Q1, 2023**
- **Fully funded 2-year exploration plan with a strong cash position of \$8.2 million (30 September 2022)**

DISCLAIMER, JORC INFORMATION & COMPETENT PERSONS STATEMENT

This presentation has been prepared by Copper Search Limited (Copper Search). This document contains background information current at the date of this presentation. The presentation is in summary form and does not purport to be all-inclusive or complete. Recipients should conduct their own investigations and perform their own analyses in order to satisfy themselves as to the accuracy and completeness of the information, statements and opinions contained in this presentation. This presentation is for information purposes only. Neither this presentation nor the information contained in it constitutes an offer, invitation, solicitation or recommendation in relation to the purchase or sales of shares or other securities in any jurisdiction. This presentation is not a prospectus, product disclosure statement or other offering documents under Australian law (and will not be lodged with the Australian Securities and Investments Commission (ASIC) or any other law. This presentation does not constitute investment or financial product advice (nor tax, accounting or legal advice) and has been prepared without taking into account the recipient's investment objectives, financial circumstances or particular needs and the opinions and recommendations in this presentation are not intended to represent recommendations of particular investments to particular persons. Recipients should seek professional advice when deciding if an investment is appropriate. All securities involve risks that include (among others) the risk of adverse or unanticipated market, financial or political developments. To the fullest extent permitted by law, Copper Search, its officers, employees, agents and advisors do not make any representation or warranty, express or implied, as to the currency, accuracy, reliability or completeness of any information, statements, opinions, estimates, forecasts or other representations contained in this presentation. No responsibility for any errors or omissions from this presentation arising out of negligence or otherwise is accepted. This presentation may include forward-looking statements. Forward-looking statements are only predictions and are subject to risks, uncertainties and assumptions which are outside the control of Resolution. Actual values, results or events may be materially different to those expressed or implied in this presentation. Given these uncertainties, recipients are cautioned not to place reliance on forward-looking statements. Any forward-looking statements in this presentation speak only at the date of issue of this presentation. Subject to any continuing obligations under applicable law, Resolution does not undertake any obligation to update or revise any information or any of the forward-looking statements in this presentation or any changes in events, conditions, or circumstances on which any such forward-looking statement is based.

JORC Information

This report includes results that have previously been released under JORC 2012 by the Company, Additional details including JORC 2012 reporting tables, where applicable can be found in the following relevant announcements lodged with the ASX and the Company is not aware of any new data or information that materially affects the information included in the announcements listed; 13/9/2021 The IPO Prospectus, 8/12/2021 Exploration Drilling Update and 31/5/2022 Corporate and Operations Update. Other regional data has been sourced from public data from the South Australian Government SARIG website.

Competent Person Statement

The information in this report that relates to Exploration Results is based on information compiled by Mr Duncan Chessell who is a member of the Australasian Institute of Mining and Metallurgy and Australian Institute of Geoscientists. Mr Chessell is a full-time employee of the company. Mr Chessell holds Shares, performance rights and Options in the Company as has been previously disclosed. Mr Chessell has sufficient experience that is relevant to the style of mineralisation and type of deposit under consideration and to the activity being undertaken to qualify as a Competent Person as defined in the 2012 Edition of the 'Australian Code for Reporting of Exploration Results, Mineral Resources and Ore Reserves. Mr Chessell consents to the inclusion in the report of the matters based on his information in the form in which it appears.

Project Ownership

All tenements are 100% owned with no encumbrances, held in 100% owned subsidiary Copper Search Australia Pty Ltd.

COPPER SEARCH

ASX:CUS

CONTACT

Duncan Chessell
CEO

+61 414804055

duncan@coppersearch.com.au

www.coppersearch.com.au

Adelaide Office

557 Magill Road

Magill SA 5072

Authorised for release by the board