



RMX IMPACT LITHIUM – NEVADA, USA

Dec 2022

ASX: RMX

Exploring for critical and new world metals

DISCLAIMER



Information in this presentation is for general purposes only, and is not an offer, recommendation, or invitation for investment in, or purchase of, Company securities; includes statements relating to past performance, which should not be regarded as a reliable indicator of future performance; and may contain information from third parties believed to be reliable; however no representations or warranties are made as to the accuracy or completeness of such information. All currency amounts are in AUD unless otherwise stated.

Future performance and forward-looking statements

Except as required by law, and then only to the extent required by law, neither the Company nor any other person warrants the future performance of the Company, the Shares or any return on any investment made by an investor under this presentation.

This presentation may contain forward-looking statements. Any such statements are based on an assessment of present economic and operating conditions, and on a number of assumptions regarding future events and actions that, at the date of this presentation, are expected to take place.

Such forward-looking statements are not guarantees of future performance and are subject to known and unknown risks, uncertainties and assumptions, many of which are outside the control of the Company and the Board. These known and unknown risks, uncertainties and assumptions, could cause actual results, performance or achievements to differ materially from future results, performance or achievements expressed or implied by forward-looking statements. These risks, uncertainties and assumptions include but are not limited to the risks in Section 8 of the draft Prospectus. Forward-looking statements include those containing such words as “anticipate”, “estimate”, “forecast”, “expect”, “opportunity”, “plan”, “intend”, “aim”, “seek”, “believe”, “should”, “will”, “may” or similar expressions.

The Company and its Directors cannot, and do not, give any assurance that the results, performance or achievements expressed or implied by any forward-looking statements contained in this presentation will actually occur and investors are cautioned not to place undue reliance on these forward-looking statements. The Company has no intention to update or revise any forward-looking statements, or to publish prospective financial information in the future, regardless of whether new information, future events or any other factors affect the information contained in the draft Prospectus except where required by law. It is important that investors seek professional advice where necessary. An investment in Shares is speculative.

The Company is not aware of any new information or data that materially affects the information included in the relevant market announcements.

RMX Capital Structure & Acquisition Deal Terms

USA Lithium Project

Capital Structure (Post Acquisition & Cap Raise)

| | |
|-------------------------------------|---------------------------|
| Shares on Issue: | 2.271bn |
| Share Price (8/12/2022): | 0.005 cent |
| Market Capitalisation: | \$11.4m |
| Cash Position (Post Capital Raise): | \$2.2m |
| Investments: | 3.5m shares (LSE: BMV) |
| Enterprise Value: | ~\$9.2m |



Purchase Agreement – Lithic & Mustang Tenements

- US\$ 150,000 in cash
- 179.5M RMX shares
- NSR of 2%
- Two Milestone Payments based on:
 - **Milestone 1** – Achieving > 200m aggregated over 10 drill holes (< 12 mths) with an average Lithium grade of ≥ 900 PPM results in vendor receiving 102.6M RMX shares
 - **Milestone 2** - Achieving > 400m aggregated over 20 drill holes (< 24 mths) with an average Lithium grade of ≥ 900 PPM results in vendor receiving an addition 102.6M RMX shares

Successful capital raising completed to fund above acquisition and significant exploration program

Why Lithium & Why Nevada, USA

Favourable Macroeconomic, Environmental & Government Policy Factors Support Lithium

- Electrification, battery storage & decarbonization is one of the greatest economic transformations in recent times, which is still in its early stages.
- Lithium is a critical mineral around the globe as it is an indispensable component of electric vehicle batteries and other energy storage solutions required to achieve an electrified and clean energy future.
- RMX's projects are located in an emerging district hosting recently discovered lithium deposits and aggressive lithium exploration.
- Projects are in close proximity to potential offtake partners and positioned to benefit from domestic supply development initiatives in the United States.
- Projects are near existing infrastructure, power and exploration / mining services.
- Nevada is a mining friendly jurisdiction with a legal framework characterized by clear laws and reliable enforcement.

RMX Projects - Strategically Positioned

Source: <https://cicenergigune.com/en/blog/north-america-accelerates-commitment-development-gigafactory-industry>

Position and Scale

Uniquely positioned and well endowed in lithium to be the scale source to the North American battery market.

Tier-1 mining jurisdiction

Nevada was ranked 1st for mining investment according to the Fraser Institute 2020 annual survey and is globally recognised as one of the premier districts for exploration and development.

Geological Setting

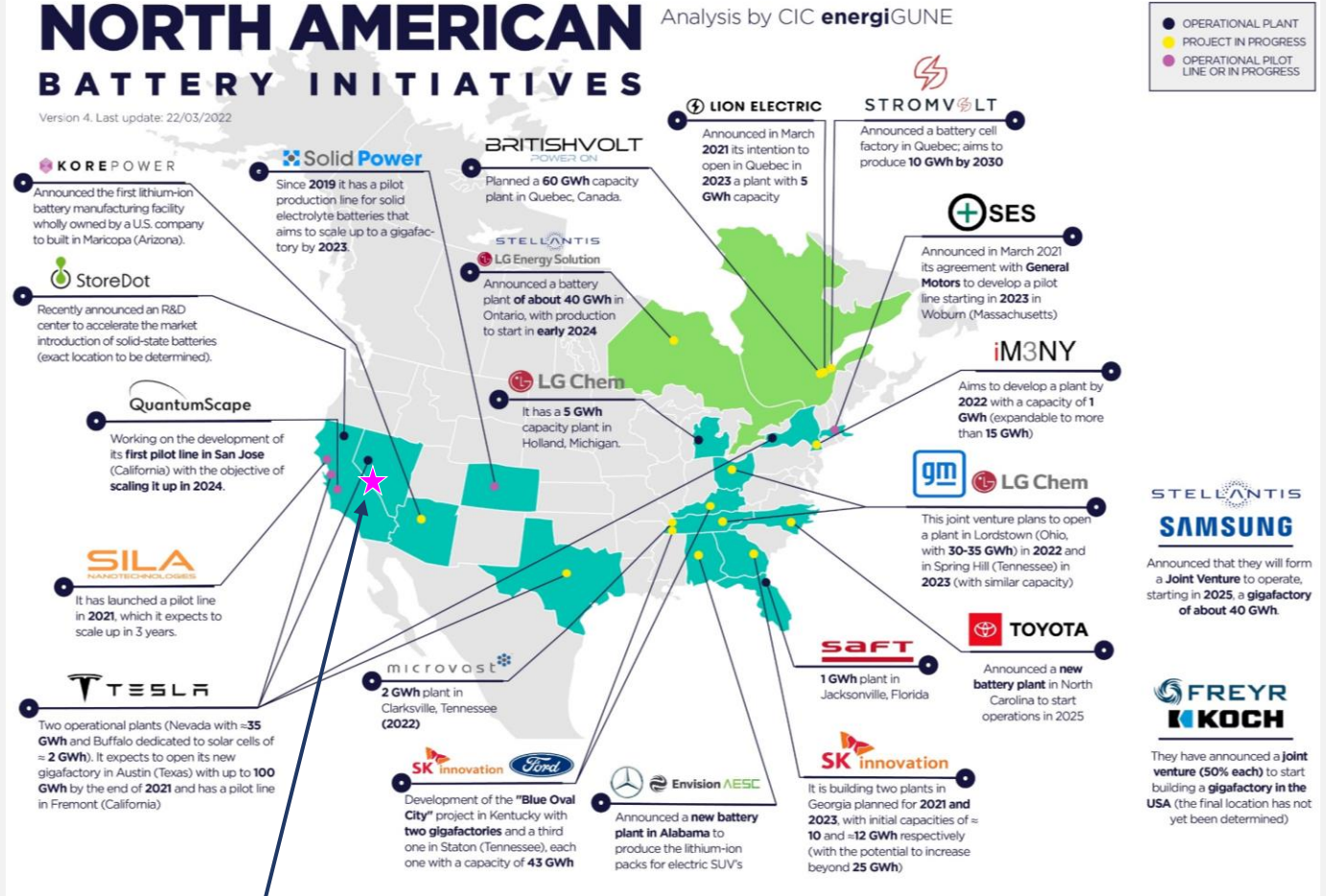
Nevada hosts the world's largest known lithium deposits with large pervasive lithium mineralisation in closed basins.

Examples are: Thacker Pass & Clayton Valley

NORTH AMERICAN BATTERY INITIATIVES

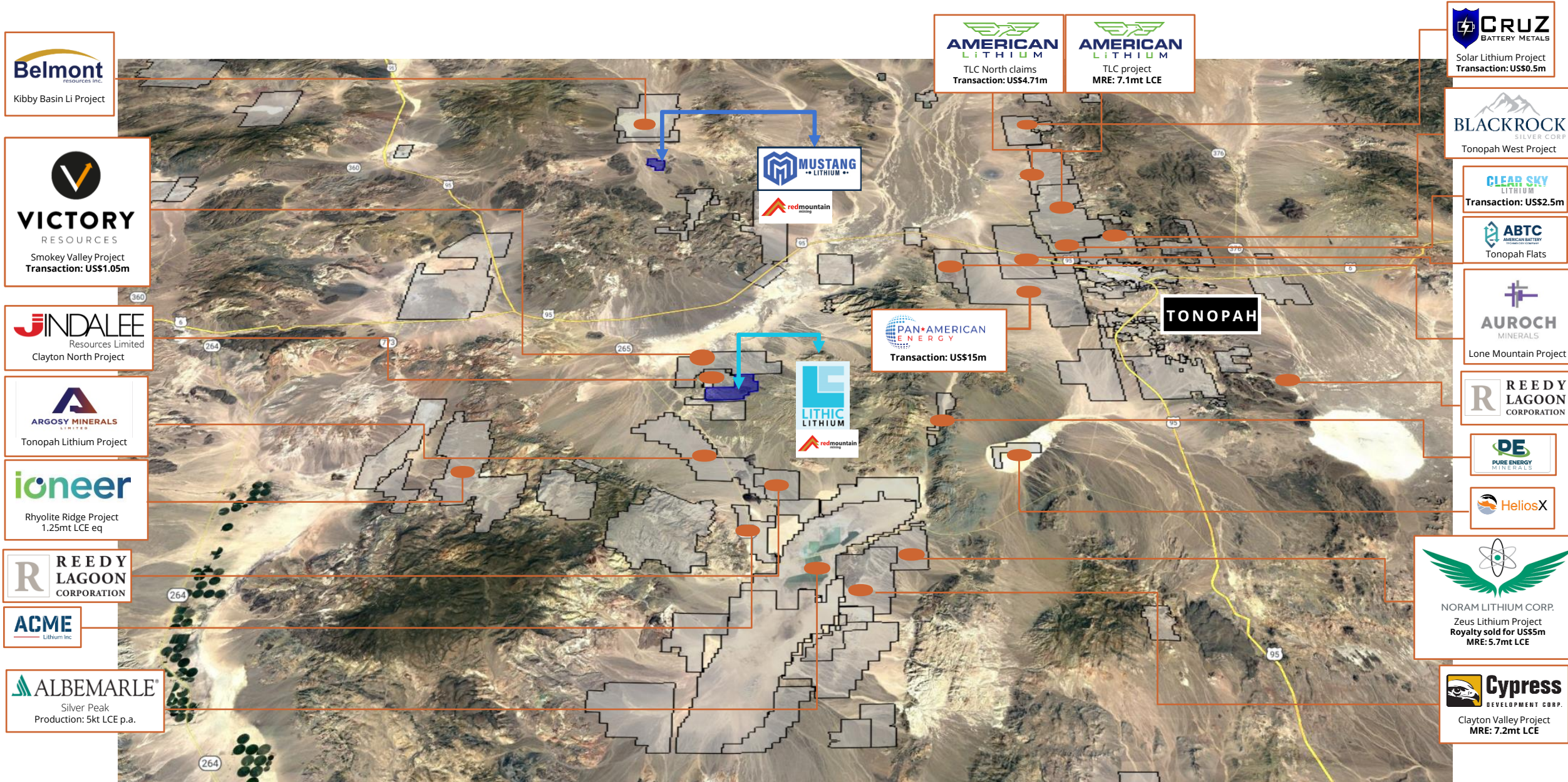
Analysis by CIC energigUNE

Version 4. Last update: 22/03/2022

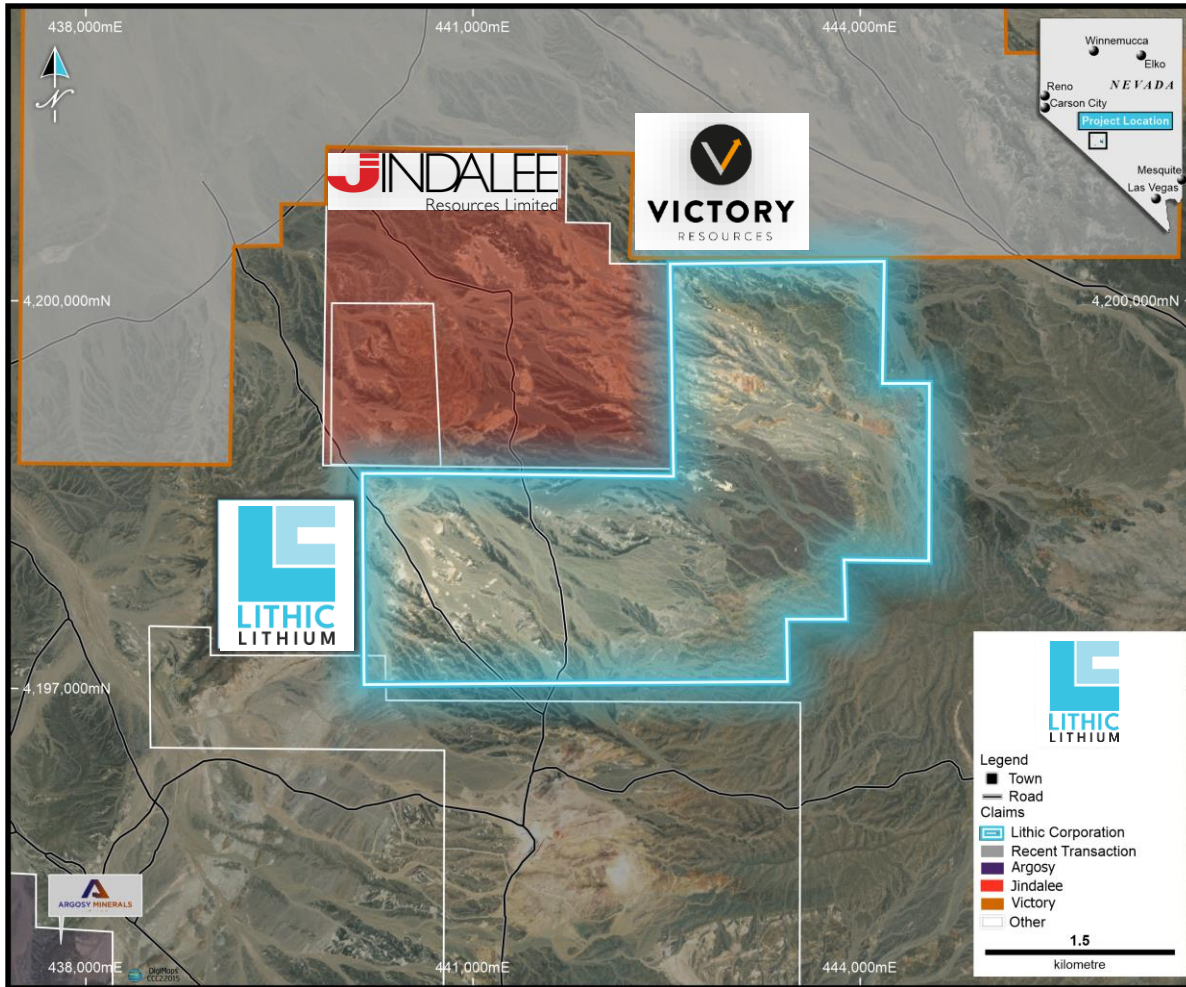


Lithic / Mustang Lithium Project

LITHIUM MINERAL RESOURCE > 21MT LCE



RMX PROJECT (1) - LITHIC LITHIUM OVERVIEW



L I T H I C L I T H I U M P R O J E C T

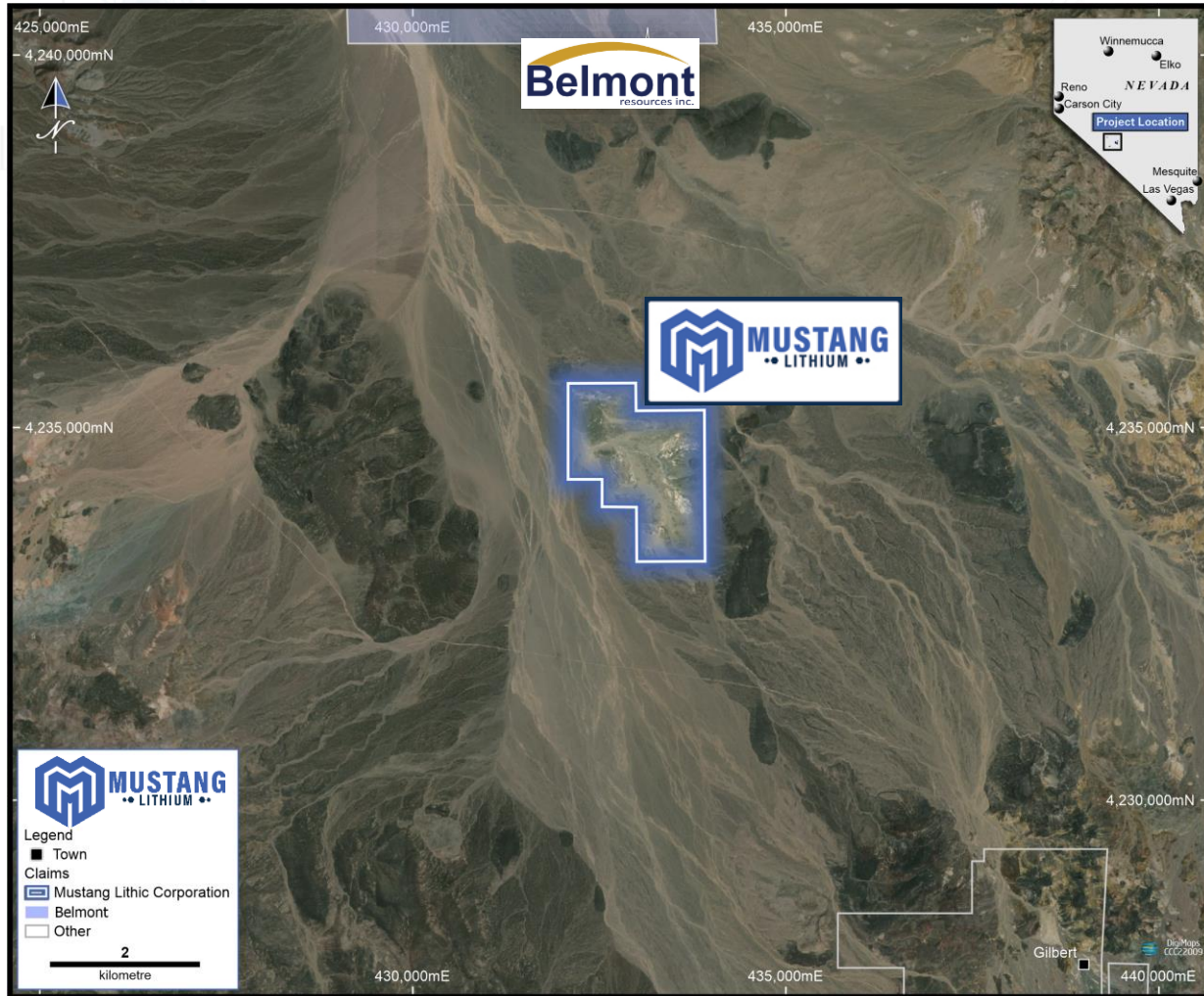
- Lithic consists of 115 claims (961 Ha) located adjacent to Jindalee Resources Clayton North project and Victory Resources Smokey lithium project
- Located 29 kilometers north of Silver Peak, the only producing lithium mine in the USA
- Lithic is considered prospective for claystone hosted lithium mineralization
- Lithic is not covered by thick alluvium and displays well exposed claystone, mudstone and siltstone host rocks
- Big Smoky Valley basin watershed drains significant lithium source rocks
- Large area on the project contains host rocks similar to the American Lithium TLC deposit

RMX PROJECT (1) - LITHIC LITHIUM – SITE PHOTOS



RMX PROJECT (2) - MUSTANG LITHIUM OVERVIEW

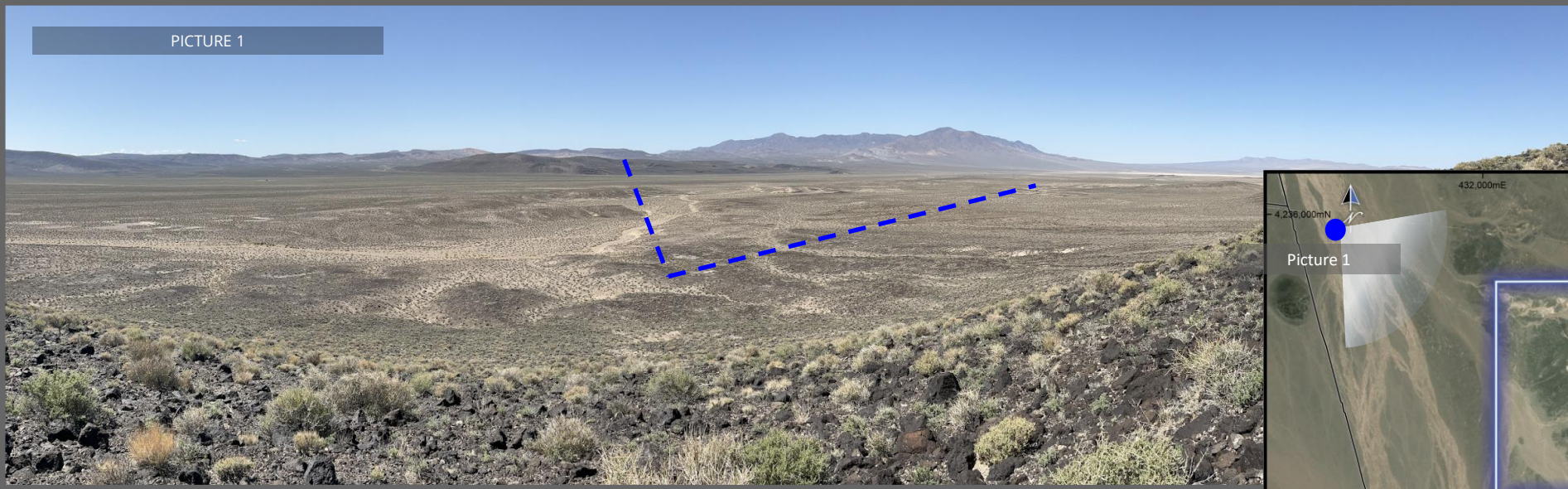
M U S T A N G L I T H I U M P R O J E C T



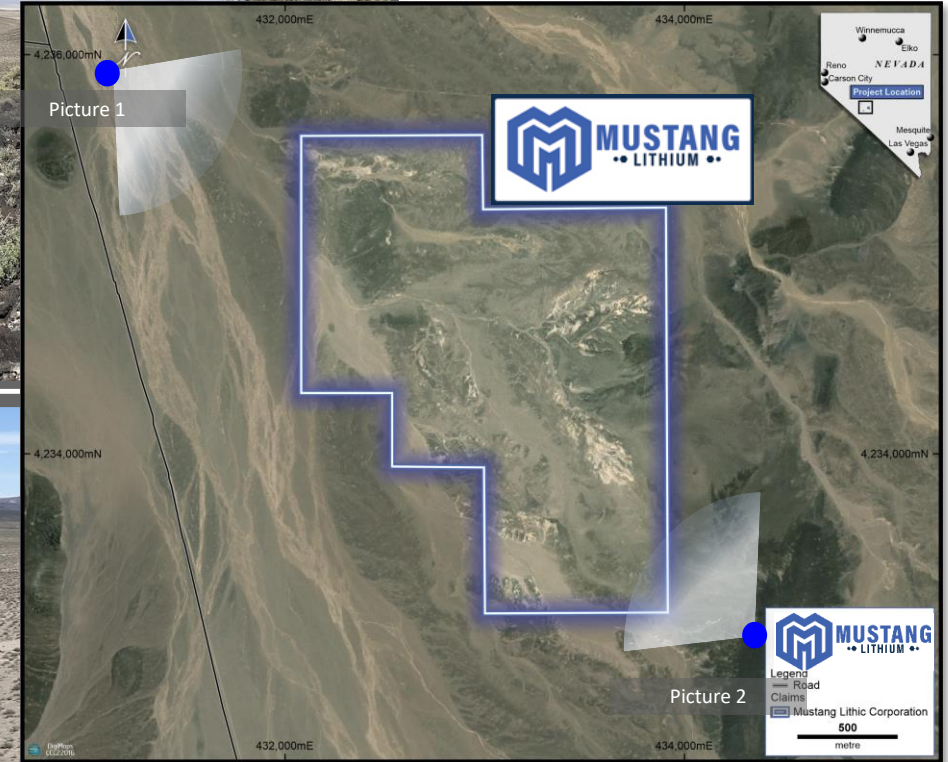
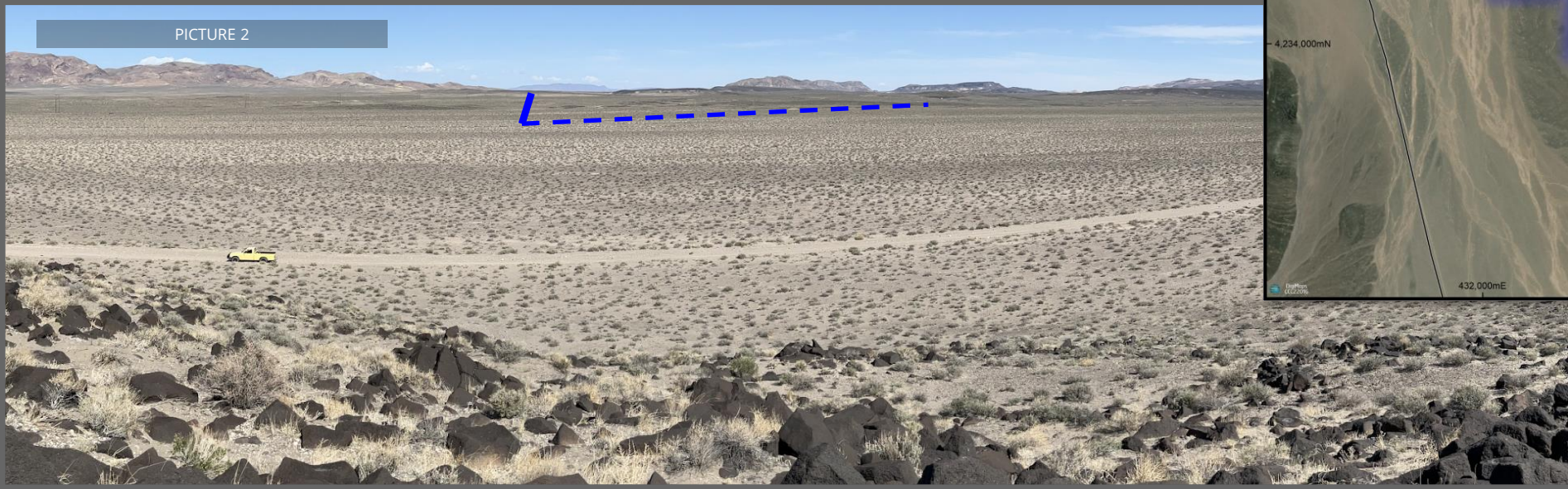
- Mustang is located in the Monte Cristo Valley, Nevada, 9km south of Belmont Resources Kibby Lake Lithium project
- Mustang consists of 38 claims (217 ha) and is prospective for brine and claystone hosted lithium mineralization
- 12 surface samples at Mustang resulted in >300 ppm Li - highly anomalous at 10x background value
- Nevada Bureau of Mines and Geology mapping shows a caldera 8 kilometers in diameter centered on the project - the potential source of lithium in the Monte Cristo valley
- Ample basin size for providing plentiful lithium inputs
- Large area on the project contains host rocks similar to the American Lithium TLC deposit
- Historic geothermal cells provided locally higher heat-flow

RMX PROJECT (2) – MUSTANG LITHIUM – SITE PHOTOS

PICTURE 1



PICTURE 2



EV's are leading a generational shift in transport

EV adoption has accelerated and market penetration will continue to drive lithium demand



Global passenger electric vehicle sales grew 80% from Q1 2021 to Q1 2022

Source: BNEF – 2Q 2022 Electrified Transport Market Outlook



Amazon pledges 100,000 electric delivery vans by 2030

Source: www.aboutamazon.com



FedEx shifts from EV delivery testing to adoption; 50% by 2025

Source: www.reuters.com

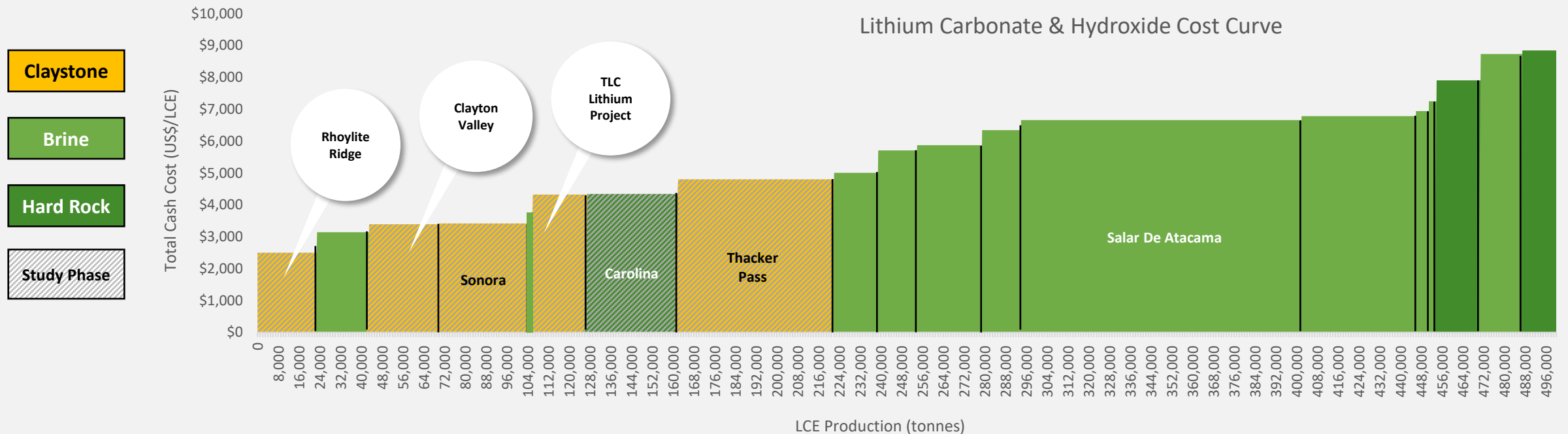


IKEA commits to 100% EV fleet by 2025

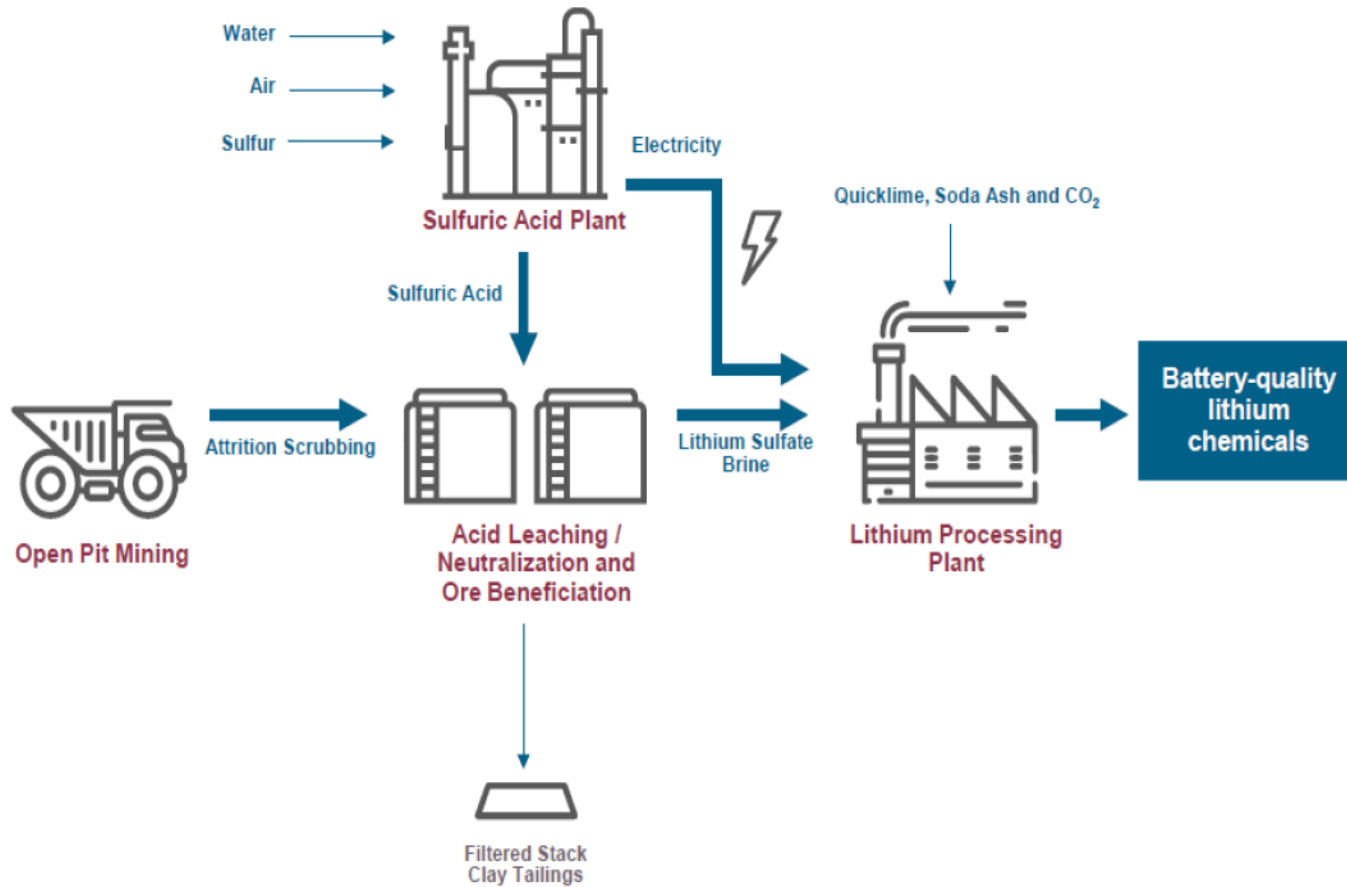
Source: www.ikea.com

Li Claystone: Cost competitive with scale advantages

- Lithium Claystone demonstrates a cost competitive solution for large-scale LCE production compared to brine and hardrock on a US\$/LCE or LiOH basis
- LCE recovery of up to 90% from ROM feed
- Environmentally friendly with 100% of power requirements able to be offset by power generation from an on-site acid plant
- Lower surface and water footprint than lithium brine projects
- Proximity to potential large scale customers (e.g. Tesla Gigafactory)



Lithium Claystone: Processing



- Lithium claystone processing solutions are well advanced by industry peers
- Proven technology that does not require proprietary IP
- Acid leaching has been previously applied to extract other minerals with success (e.g. copper, nickel, uranium and rare earth elements)
- Process produces saleable by-products such as Epsom salt, fertilizer and sodium hydroxide
- No known toxic by-products or contaminants

Claystone – the sustainable lithium solution

RMX USA's claystone lithium positions underpins fundamental **ESG** values



Environmental

Environmentally superior to Hardrock and Brines

1. 100% of power requirements can be offset from acid plant
2. Neighbouring solar farm
2. Lower water and surface footprint than Brine
3. Proximity to offtake potential customers reduces carbon footprints of post mine-gate logistic



Social

American Oriented

1. Securing domestic supply of critical minerals
2. Securing domestic jobs
3. Strengthening the USA transition to a cleaner economy



Governance

1. RMX USA Lithium seeks to develop and implement best practice ESG governance practices at the board and management level



RMX USA LITHIUM - WORK PROGRAM / NEWS FLOW

- Completing geological mapping, collect Lithic & Mustang surface samples & send to lab for assaying – **Underway now**
- Identify other nearby prospective lithium clay stones & stake additional new claims at both Lithic & Mustang Projects - **Complete within December 2022**
- Commence drill permitting for both projects & engage a drilling contractor – **Complete in early Q1 2023**
- Investigate lithium claystone processing solutions for Lithic & Mustang – **Commence in early 2023**
- Drilling permit approval & confirmed drilling plan with targets outlined – **Mid Q1 2023**
- Maiden drill program commenced – **Late Q1 2023**
- Drilling Update – assays sent to lab – **End of Q1 2023**
- Preliminary assay results for Lithic / assays pending for Mustang – **Mid Q2 2023**
- Drill assay results for both Lithic & Mustang – **Late Q2 2023**
- Phase II drill plan (dependent on results) – **End of Q2 2023**