

## Larvotto to Commence Drilling at Ohakuri Gold Project in New Zealand

### Highlights

- Drill testing known large epithermal gold system
- Diamond rig due to mobilise on 16<sup>th</sup> January
- 3000m of core drilling planned
- Targeting geophysical model and historical drill intersection

Larvotto Resources Limited (**ASX: LRV**, **Germany: K6X**, 'Larvotto' or 'the Company') is pleased to announce that will commence diamond drilling mid-January 2023 at the Ohakuri Gold Project in NZ ('Ohakuri'). The aim of the drilling is to test geophysical targets believed to be feeder zones for the surface gold mineralisation.

### Managing Director, Ron Heeks commented,

"Results from the geophysical survey completed last year along with a re-evaluation of the large amount historical exploration information has produced several concise drill targets that warrant diamond drilling. The rig will be mobilised to site to complete some 3000m of diamond drilling targeting potentially higher-grade, gold 'feeder' zones. Ohakuri has been explored by several companies over the past 40 years and a large lower grade area of mineralisation has been identified. The source of this mineralisation has not been identified and we look forward to some exciting results from the drilling."

Drilling will be undertaken by a track mounted diamond rig. Some 8 holes will be drilled to depths of 250 to 500m with the aim of intersecting the quartz rich, electrically resistive zones identified from recent geophysics.<sup>1</sup> The drilling will take several months to complete. A diagram showing the target areas is provided as Figure 1.

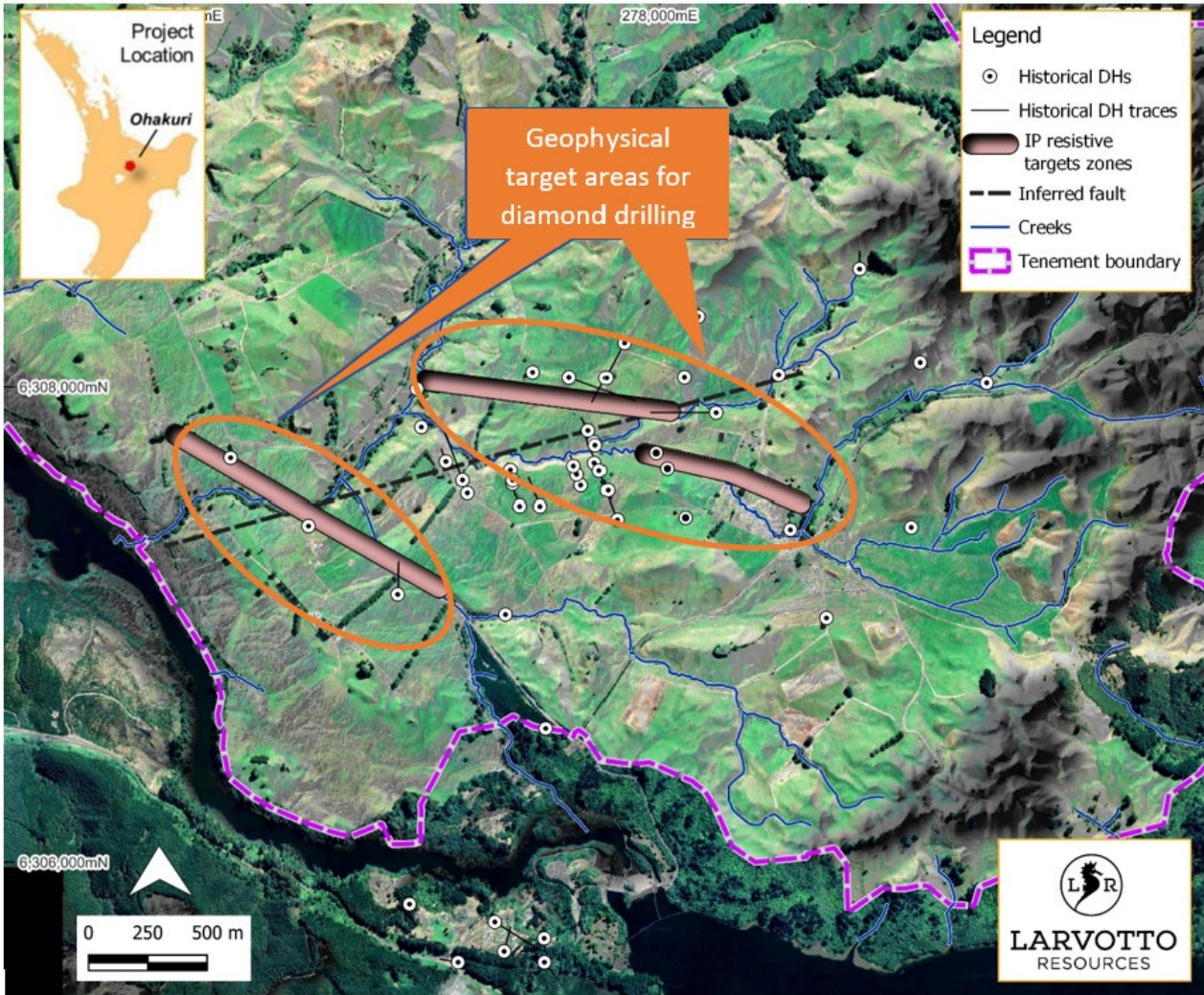


Figure 1 Ohakuri diamond drilling target areas

1 Refer Larvotto Resources Limited (ASX:LRV) ASX Announcement dated 25 November 2022 25 Nov 2022 New Drill Targets Defined at Ohakuri Gold Project.

This announcement was authorised for release by the Board of Larvotto Resources Limited.

## About Larvotto Resources Ltd

Larvotto Resources Limited (ASX:LRV) is actively exploring its portfolio of projects including the large Mt Isa copper, gold, and cobalt project adjacent to Mt Isa townsite in Queensland, an exciting gold exploration project at Ohakuri in New Zealand's North Island and the Eyre multi-metals and lithium project located some 30km east of Norseman in Western Australia. Larvotto's board is a mix of experienced explorers and corporate financiers. Visit [www.larvottoresources.com](http://www.larvottoresources.com) for further information.

## Reporting Confirmation

Full location data on the historical drill holes as well as details of any previous exploration activities and results, and JORC Tables 1 and 2 (Sampling Techniques and Data and Reporting of Exploration Results) according to the JORC Code 2012 Edition were included at Annexure A of the Company's Prospectus dated 18 October 2021.

The Company confirms that it is not aware of any new information or data that materially affects the information included in the original market announcements, being the Prospectus dated 18 October 2021 and the Release to the ASX dated 25 November 2022 .

The Company confirms that the form and context in which the Competent Person's findings are presented have not been materially modified from the original market announcements.

## Forward Looking Statements

Any forward-looking information contained in this news release is made as of the date of this news release. Except as required under applicable securities legislation, Larvotto does not intend, and does not assume any obligation, to update this forward-looking information. Any forward-looking information contained in this news release is based on numerous assumptions and is subject to all of the risks and uncertainties inherent in the Company's business, including risks inherent in resource exploration and development. As a result, actual results may vary materially from those described in the forward-looking information. Readers are cautioned not to place undue reliance on forward looking information due to the inherent uncertainty thereof.



### LARVOTTO RESOURCES LIMITED

ABN 16 645 596 238  
**ASX:LRV | TGAT:K6X**  
  
136 Stirling Highway,  
Nedlands, WA 6009  
  
PO Box 496, Claremont, WA 6910  
+61 (8) 6373 0112  
[info@larvottoresources.com](mailto:info@larvottoresources.com)  
  
[www.larvottoresources.com](http://www.larvottoresources.com)

### DIRECTORS

**Mr Mark Tomlinson**  
Non-Executive Chairman  
  
**Mr Ron Heeks**  
Managing Director  
  
**Ms Anna Nahajski-Staples**  
Non-Executive Director  
  
**Mr Matthew Edmondson**  
Company Secretary

### PROJECTS

**Mt Isa Au, Cu, Co**  
Mt Isa, QLD  
  
**Ohakuri Au**  
New Zealand  
  
**Eyre Ni, Au, PGE, Li**  
Norseman, WA

### FOLLOW US



### CONTACT

For further information, please contact:  
  
**Mr Ron Heeks**  
Managing Director  
+61 (8) 6373 0112  
[info@larvottoresources.com](mailto:info@larvottoresources.com)  
  
**Victoria Humphries / Ben Creagh**  
Media and investor enquiries  
[victoria@nwrcommunications.com.au](mailto:victoria@nwrcommunications.com.au)  
[benc@nwrcommunications.com.au](mailto:benc@nwrcommunications.com.au)