

19 January 2023

OUTSTANDING NEW HIGH-GRADE INTERCEPTS POINT TO EXTENSIONS AT NORTHERN OPERATIONS AS INITIAL CASSINI UG DRILLING COMMENCES

Broader exploration envelope emerging at the Northern Operations, with recent underground diamond drilling highlighting potential extensions to the Durkin North channel

- Recent extensional drilling at Durkin North has returned outstanding new high-grade nickel intersections:
 - ULG-22-117 – 1.9m @ 12.4% Ni
 - ULG-22-107 – 2.9m @ 9.2% Ni
 - ULG-22-121 – 3.8m @ 7.4% Ni
 - ULG-22-113 – 2.3m @ 6.4% Ni
 - ULG-22-115 – 5.2m @ 5.3% Ni
- These latest intercepts indicate significant potential for strike and dip extensions of the Durkin North orebodies, across a broader emerging mineralised channel
- Meanwhile, the recently delineated LN04a orebody continues to grow, with recent drilling reinforcing the up-dip potential. Significant new intersections include:
 - ULG-22-130 – 1.5m @ 11.8% Ni
 - ULG-22-120 – 5.8m @ 3.7% Ni
 - ULG-22-134 – 1.4m @ 3.7% Ni
- Two diamond drill rigs continue drilling underground at the Northern Operations, with drill programs focused on delineating Durkin North extensions and the continued expansion of the LN04a deposit
- A third underground diamond drill rig has now commenced underground drilling at Cassini, with this first drilling program targeting the exciting Cassini North area

Mincor Resources NL (ASX: MCR, “Mincor” or the “Company”) is pleased to report further significant assay results from underground drilling targeting extensions of the Durkin North and LN04a orebodies within the highly prospective exploration zone at the Company’s Long and Durkin North Operations at Kambalda in Western Australia (together, the “Northern Operations”).

Modelling and interpretation of this new geological data has led to the interpretation of a considerably broader Long-Durkin North mineralised channel. The latest interpretation suggests that Long, LN04a and Durkin North orebodies **all form part of the same, broad mineralised channel, which may have a strike extent of greater than 2.5km** (Figure 1). The high-grade massive sulphide intersections observed within this channel resemble the typical Kambalda-type ore surfaces currently being mined at Mincor’s Northern Operations.

This recently defined mineralised channel is believed to represent a significant exploration opportunity for the Company and further systematic step-out drilling is planned over the current financial year to determine the potential for economic mineralisation, as well as further potential strike extensions of the Durkin North orebodies (Figure 1).

New drilling points to a broader Long-Durkin North mineralised channel

The latest drill results indicate extensions of the Durkin North orebodies with mineralised surfaces continuing beyond the existing resources and remaining open both along strike and down-dip (Figures 1 and 2). In

TEL 08 9476 7200
FAX 08 9321 8994
EMAIL mincor@mincor.com.au
WEBSITE www.mincor.com.au
ACN 072 745 692

POSTAL ADDRESS
PO Box 1810
West Perth WA 6872
Australia

REGISTERED OFFICE
Level 1, 8 Richardson Street
West Perth WA 6005
Australia

particular, the significant high-grade intercepts at Durkin North highlight the potential for strike and down-dip extensions to the west (Figure 2), previously untested.

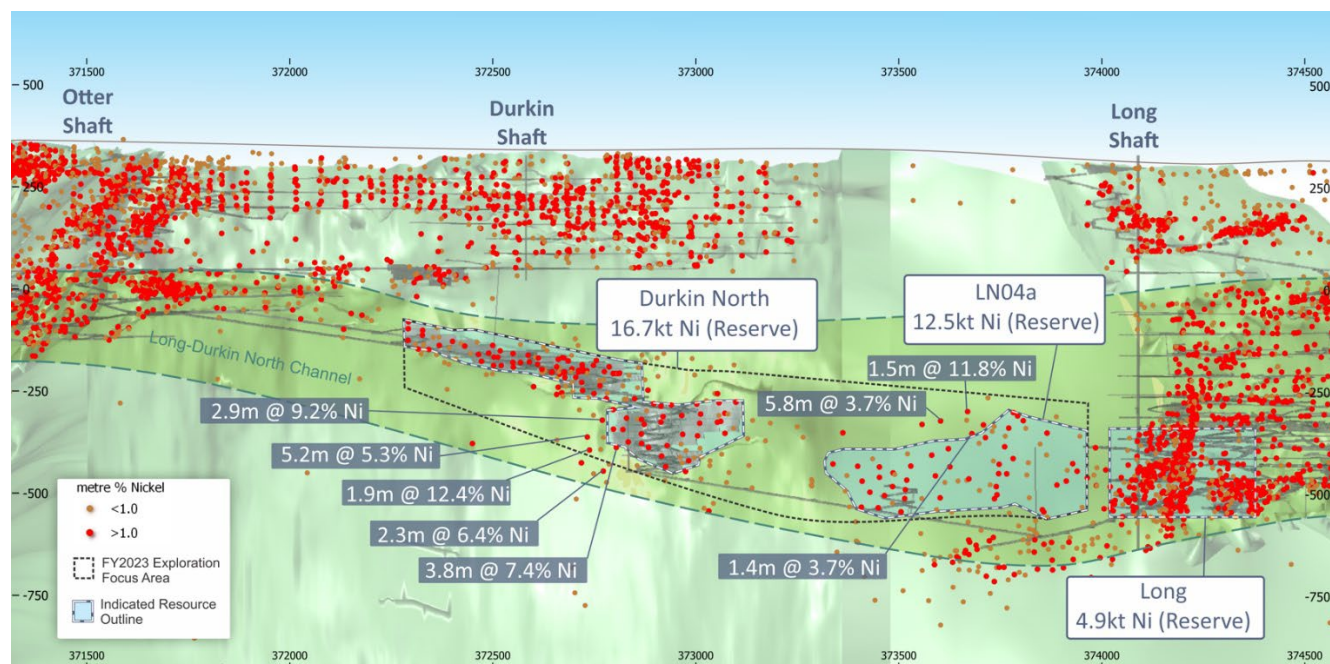


Figure 1. Long section of the Long, Durkin North and LN04a resources within the greater Kambalda Dome (facing North). Also illustrated are the latest significant diamond drill intercepts at Durkin North and LN04a and the recently interpreted Long – Durkin North mineralised channel, which is expected to be the main focus of drilling still to take place over the remainder of FY2023.

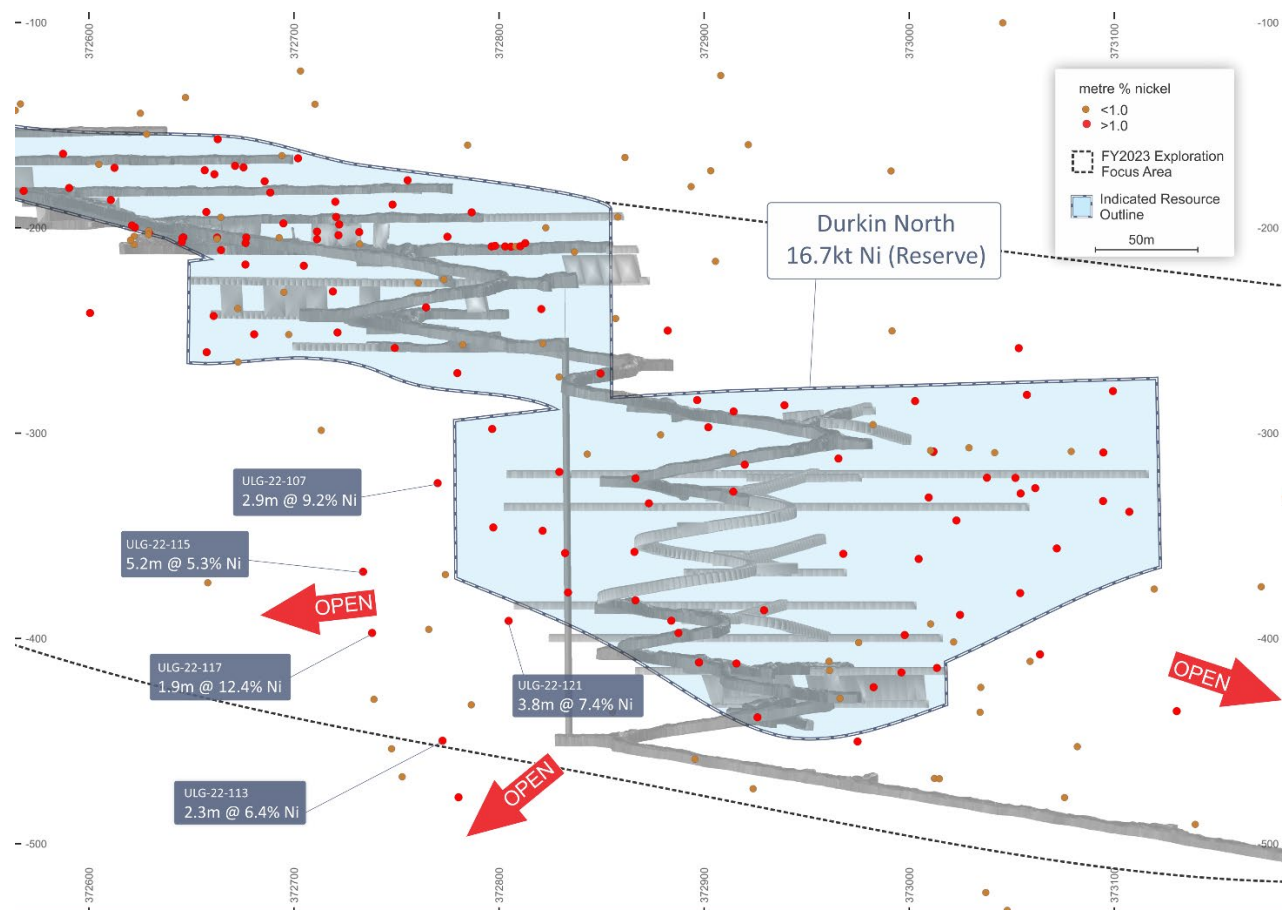


Figure 2: Durkin North long section (facing north), highlighting key new drill-hole intercepts outside of the existing resources. The orebody remains open in the directions indicated by arrows.

The Company is excited about the implications of the recently defined Long-Durkin North mineralised channel and the potential to delineate further high-grade mineralisation within areas where there has been no systematic drill testing (Figures 1 and 2).

A significant underground drilling program will continue at the Northern Operations over the remainder of FY2023 with the focus on step-out and in-fill drilling within the recently defined Long-Durkin North mineralised channel and further grade control drilling (Figures 1 and 2).

LN04a

The latest round of drilling has provided additional confidence in the up-dip continuity of the LN04a orebody, with multiple high-grade intercepts returned outside of the current Mineral Resource. These results further reinforce the potential of LN04a to extend beyond the original interpretation, with mineralisation remaining open along strike and, notably, up-dip (Figure 3).

Highlights of the recent up-dip diamond drilling intercepts include:

- ULG-22-130 – 1.5m @ 11.8% Ni
- ULG-22-120 – 5.8m @ 3.7% Ni
- ULG-22-134 – 1.4m @ 3.7% Ni

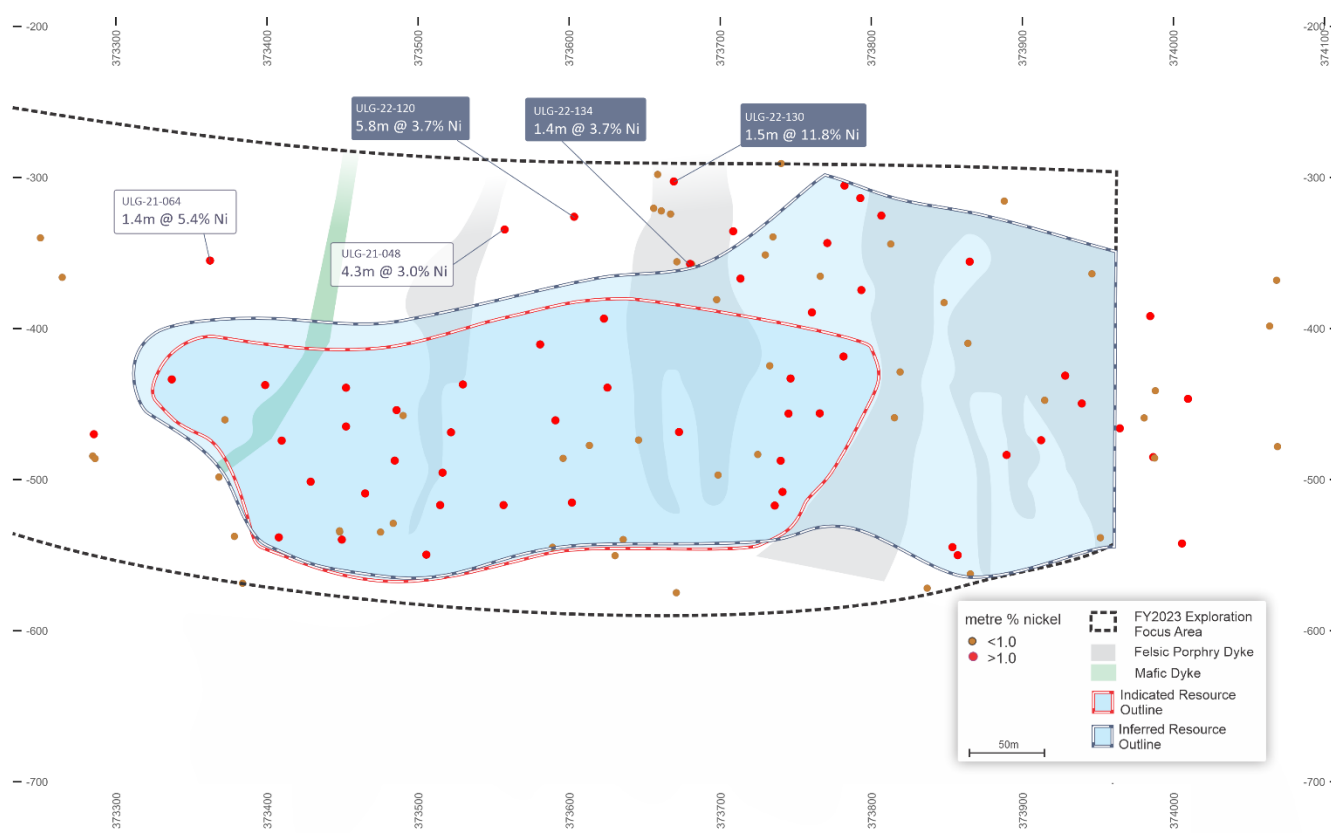


Figure 3. LN04a long section (facing North) illustrating recent diamond drill intercepts on likely up-dip extensions of the LN04a.

Maiden underground drill program at Cassini Mine

The Company recently announced that it had secured a third underground diamond drill rig to accelerate exploration activities at Cassini (see ASX Announcement dated 9 December 2022).

Originally planned for later in CY2023, the arrival of an additional rig has substantially accelerated the early exploration programs at Cassini and represents the first underground exploration work to be undertaken at this new mine since development of the operation began.

The new rig has commenced underground drilling at Cassini (Figure 4). Drilling will initially take place from existing stockpile in the main Woodall Decline, with early programs targeting the highly prospective Cassini North channel (Figure 5). Similar to the Northern Operations, the potential for resource extensions at Cassini is enhanced by the proximity to existing high-quality underground infrastructure, with Cassini offering exciting opportunities to introduce additional near-term ore sources and materially extend mine life.



Figure 4. Underground diamond drill rig mobilised at Cassini.

Cassini North Initial Target

Cassini North is a U-shaped ultramafic channel located sub-parallel to the Cassini orebody (Figure 5). Mincor previously tested the uppermost portion of the interpreted channel from surface in 2020 (see ASX release dated 25 June 2020), resulting in multiple >1% Ni intersections (Figure 5).

While the Cassini North channel is modelled to extend down-plunge, sub-parallel to the Cassini orebody, there has so far been no drill testing of the channel below approximately 550m from surface.

Underground development at Cassini now provides excellent drill platforms to undertake systematic drill testing of the down-plunge extents of the Cassini North channel. Initial drilling is aimed at better defining Cassini North channel architecture and further resource development at Cassini.

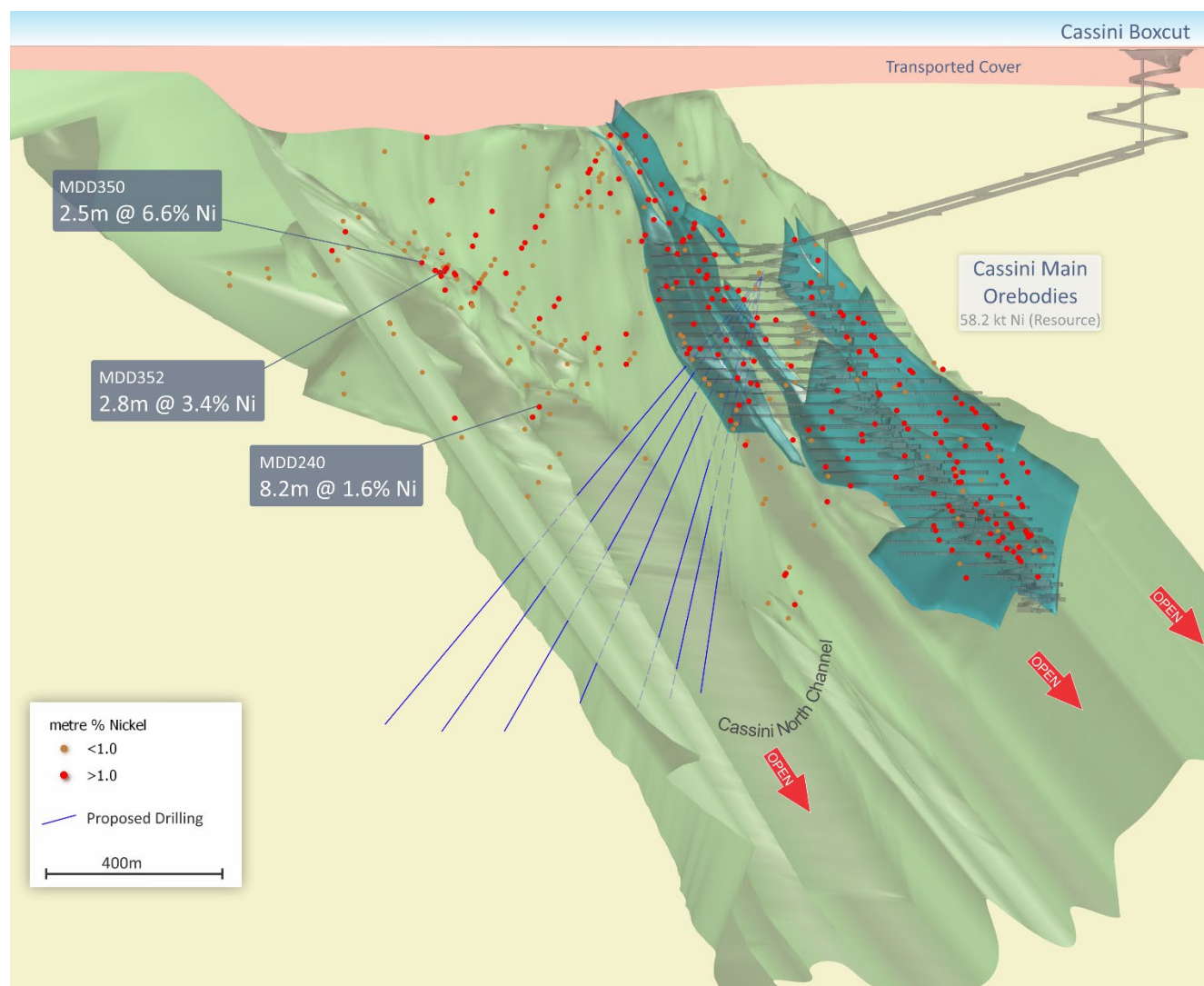


Figure 5. Cassini long section highlighting the Cassini North channel, which is located sub-parallel to the Cassini Main orebodies. Note the initial schematic drilling targeting down-plunge extensions of the Cassini North channel.

Hartley Prospect

Geological interpretation and modelling of the geophysical data at the Hartley prospect is ongoing. The main objective of this work is to develop a robust geological model and enable detailed understanding of the channel architecture, both of which, once completed, will be used to guide further exploration drilling.

A moving loop electromagnetic (MLEM) program has been extended and now covers the broader prospect area (Figure 6). The MLEM program is expected to be completed in March 2023.

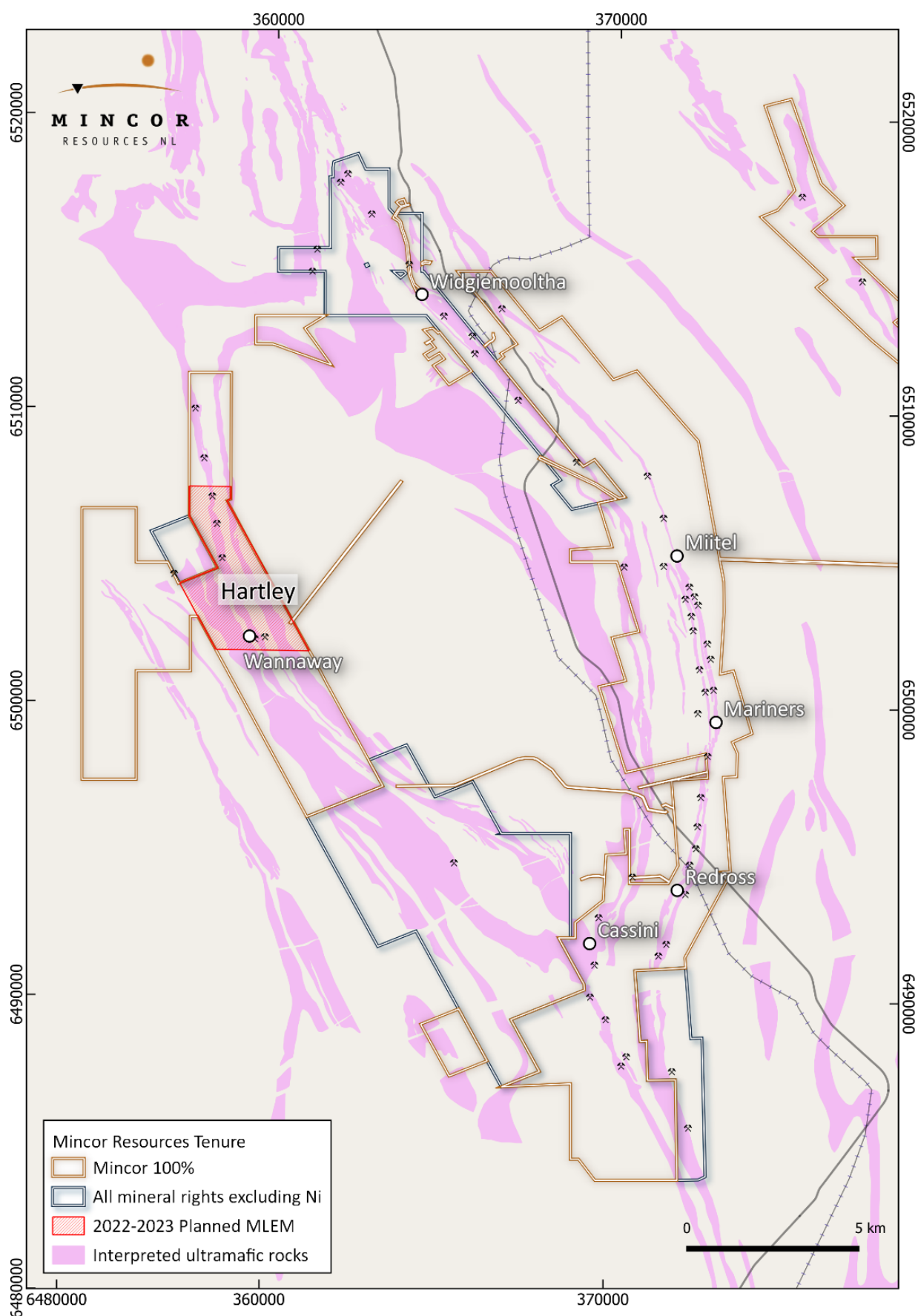


Figure 6: 2022/2023 Hartley Prospect MLEM program.

- ENDS -

Approved by the Board of Mincor Resources NL

For further details, please contact:

Gabrielle Iwanow
Managing Director
Mincor Resources NL
Tel: (08) 9476 7200

Kurt Walker
GM Corporate Development
Mincor Resources NL
Email: k.walker@mincor.com.au
Tel: (08) 9476 7200

Media Inquiries
Nicholas Read
Read Corporate
Tel: (08) 9388 1474

Summary Information

The following disclaimer applies to this announcement and any information contained in it (the Information). The Information in this announcement is of general background and does not purport to be complete. It should be read in conjunction with Mincor's other periodic and continuous disclosure announcements lodged with ASX Limited, which are available at www.asx.com.au. You are advised to read this disclaimer carefully before reading or making any other use of this announcement or any Information contained in this announcement. In accepting this announcement, you agree to be bound by the following terms and conditions including any modifications to them.

Forward Looking Statements

This announcement may include forward-looking statements. These forward-looking statements are based on Mincor's expectations and beliefs concerning future events. Forward looking statements are necessarily subject to risks, uncertainties and other factors, many of which are outside the control of Mincor, which could cause actual results to differ materially from such statements. Mincor makes no undertaking to subsequently update or revise the forward-looking statements made in this announcement, to reflect the circumstances or events after the date of this announcement.

APPENDIX 1: Nickel Mineral Resources and Ore Reserves

Nickel Mineral Resources as at 30 June 2022

RESOURCE	MEASURED		INDICATED		INFERRED		TOTAL		
	Tonnes	Ni (%)	Tonnes	Ni (%)	Tonnes	Ni (%)	Tonnes	Ni (%)	Ni tonnes
Cassini			1,287,000	4.0	183,000	3.5	1,470,000	4.0	58,200
Long ¹			918,000	4.2	448,000	4.1	1,366,000	4.1	56,500
Redross	39,000	4.9	138,000	2.9	67,000	2.9	244,000	3.2	7,900
Burnett	-	-	241,000	4.0	-	-	241,000	4.0	9,700
Miitel	156,000	3.5	408,000	2.8	27,000	4.1	591,000	3.1	18,100
Wannaway	-	-	110,000	2.6	16,000	6.6	126,000	3.1	3,900
Carnilya	47,000	3.6	57,000	2.2	-	-	104,000	2.8	2,900
Otter Juan	2,000	6.9	51,000	4.1	-	-	53,000	4.3	2,300
Ken/McMahon	25,000	2.7	183,000	3.9	54,000	3.2	262,000	3.7	9,600
Durkin North ²	-	-	522,000	4.7	18,000	4.4	540,000	4.7	25,400
Durkin Oxide			154,000	3.2	22,000	1.7	176,000	3.0	5,200
Gellatly	-	-	29,000	3.4	-	-	29,000	3.4	1,000
Voyce	-	-	50,000	5.3	14,000	5.0	64,000	5.2	3,400
Cameron	-	-	96,000	3.3	-	-	96,000	3.3	3,200
Stockwell	-	-	554,000	3.0	-	-	554,000	3.0	16,700
TOTAL	270,000	3.7	4,797,000	3.8	850,000	3.8	5,916,000	3.8	223,900

Note:

- Figures have been rounded and hence may not add up exactly to the given totals.
- Nickel Mineral Resources are inclusive of nickel Ore Reserves.
- ¹The Long Mineral Resource includes a portion of the LN04a.
- ²The Durkin North Mineral Resource includes a portion of the LN04a.
- The complete JORC Code reports for nickel Mineral Resources and Ore Reserves, including JORC Code Table 1 checklist, which detail the material assumptions and technical parameters for each estimate, can be found in the Company's ASX announcements dated 25 March 2020, 25 June 2020, 25 July 2022 and 5 October 2022.

The information in this report that relates to nickel Mineral Resources is based on information compiled by Mark Muller, who is a Member of the Australasian Institute of Mining and Metallurgy. Mr Muller is a full time employee of Mincor Resources NL. Mr Muller has sufficient experience relevant to the style of mineralisation and type of deposit under consideration, and to the activity which he is undertaking to qualify as a Competent Person as defined in the 2012 edition of the 'Australasian Code for Reporting of Exploration Results, Mineral Resources and Ore Reserves. Mr Muller consents to the inclusion in this report of the matters based on his information in the form and context in which it appears.

The information in this report that relates to Exploration Results is based on information compiled by Dr Zoran Seat, who is a Member of The Australasian Institute of Mining and Metallurgy. Dr Seat is a full-time employee of Mincor Resources NL. Dr Seat has sufficient experience that is relevant to the style of mineralisation and type of deposit under consideration and to the activity that he is undertaking to qualify as Competent Persons as defined in the 2012 Edition of the Australasian Code for Reporting of Exploration Results, Mineral Resources and Ore Reserves. Dr Seat consents to the inclusion in the report of the matters based on his information in the form and context in which it appears.

APPENDIX 2: Nickel Mineral Resources and Ore Reserves

Nickel Ore Reserves as at 30 June 2022

RESERVE	PROVED		PROBABLE		TOTAL		
	Tonnes	Ni (%)	Tonnes	Ni (%)	Tonnes	Ni (%)	Ni tonnes
Cassini	-	-	1,196,000	3.3	1,196,000	3.3	39,500
Long	-	-	136,000	3.6	136,000	3.6	4,900
LN04a*	-	-	475,000	2.6	475,000	2.6	12,500
Burnett	-	-	271,000	2.6	271,000	2.6	6,900
Miitel	19,000	2.9	126,000	2.1	145,000	2.2	3,300
Durkin North	-	-	736,000	2.3	736,000	2.3	16,700
TOTAL	19,000	2.9	2,940,000	2.8	2,959,000	2.8	83,800

Note:

- Figures have been rounded and hence may not add up exactly to the given totals.
- * LN04a Ore Reserve reported at 28 October 2022
- Note that nickel Mineral Resources are inclusive of nickel Ore Reserves.

The information in this report that relates to nickel Ore Reserves at Cassini and Long (including LN04a) is based on information compiled by Dean Will, who is a Member of the Australasian Institute of Mining and Metallurgy. Mr Will is a full-time employee of Mincor Resources NL and has sufficient experience relevant to the style of mineralisation and type of deposit under consideration, and to the activity which he is undertaking to qualify as a Competent Person as defined in the 2012 edition of the "Australian Code for Reporting of Exploration Results, Mineral Resources and Ore Reserves". Mr Will consents to the inclusion in this report of the matters based on his information in the form and context in which it appears.

The information in this report that relates to nickel Ore Reserves at Burnett, Miitel and Durkin North is based on information compiled by Paul Darcey, who is a Member of the Australasian Institute of Mining and Metallurgy. Mr Darcey is a full-time employee of Mincor Resources NL and has sufficient experience relevant to the style of mineralisation and type of deposit under consideration, and to the activity which he is undertaking to qualify as a Competent Person as defined in the 2012 edition of the "Australian Code for Reporting of Exploration Results, Mineral Resources and Ore Reserves". Mr Darcey consents to the inclusion in this report of the matters based on his information in the form and context in which it appears.

APPENDIX 3: Drill Hole Tabulations

Hole ID	Collar coordinates						From	To	Interval (m)	Estimated true width (m)	wt% Ni	wt% Cu	wt% Co
	Local easting	Local northing	Local RL	EOH depth (m)	Dip	Local azimuth							
Northern Operations													
ULG-22-074	373296.4	551180.4	-521.7	236.2	-20.2	30.5	160.50	160.70	0.20	0.2	0.1	0.0	0.0
ULG-22-076	372840.3	551420.9	-226.4	263.8	-26.5	78.4	234.65	242.73	8.08	0.2	1.5	0.1	0.0
ULG-22-082	372822.0	551425.9	-225.2	113.8	20.7	25.0	84.09	84.29	0.20	0.2	1.3	0.1	0.0
ULG-22-084	372821.7	551425.9	-226.6	125.7	-14.6	26.8	75.23	75.85	0.62	0.6	1.5	0.4	0.1
ULG-22-086	372823.6	551425.7	-226.8	140.8	-29.7	41.4	117.37	119.23	1.86	1.2	3.0	0.4	0.1
ULG-22-089	372986.0	551352.6	-469.5	200.7	11.0	59.3	163.50	164.35	0.85	0.4	2.3	0.3	0.1
ULG-22-090	372840.4	551418.1	-225.6	293.5	5.5	86.7	157.17	158.14	0.97	0.5	0.7	0.0	0.0
ULG-22-092	372840.5	551420.2	-223.7	170.8	31.2	47.3	82.57	83.09	0.52	0.5	0.7	0.1	0.0
ULG-22-092	372840.5	551420.2	-223.7	170.8	31.2	47.3	97.20	97.36	0.16	0.1	0.2	0.0	0.0
ULG-22-098	372984.5	551353.5	-470.8	191.5	-2.4	33.4	149.24	150.00	0.76	0.7	0.6	0.0	0.0
ULG-22-099	372984.8	551353.8	-470.4	207.0	-5.3	57.1	177.07	177.46	0.39	0.3	0.3	0.0	0.0
ULG-22-100	372840.2	551421.1	-226.5	221.7	-39.0	38.6	145.0	146.4	1.4	0.8	3.0	0.2	0.1
ULG-22-101	372982.5	551354.1	-467.5	305.4	3.6	334.1	246.25	246.40	0.15	0.1	2.3	0.4	0.0
ULG-22-102	372840.5	551419.1	-226.0	218.3	-11.6	83.4	153.24	153.92	0.68	0.3	0.2	0.0	0.0

ULG-22-103	372984.8	551353.8	-470.4	234.0	-15.4	12.6	179.50	180.00	0.50	0.4	0.2	0.0	0.0
ULG-22-103	372984.8	551353.8	-470.4	234.0	-15.4	12.6	206.65	207.06	0.41	0.3	0.7	0.0	0.0
ULG-22-104	372840.6	551417.8	-224.3	224.0	20.4	84.5	159.05	160.00	0.95	0.5	0.7	0.0	0.0
ULG-22-107	372710.1	551455.7	-242.6	216.0	-25.9	18.8	178.93	181.80	2.87	1.5	9.2	0.4	0.1
ULG-22-108	372710.2	551455.7	-242.8	374.8	-44.2	359.7	267.65	267.98	0.33	0.1	0.5	0.0	0.0
ULG-22-108	372710.2	551455.7	-242.8	374.8	-44.2	359.7	302.75	302.83	0.08	0.0	5.9	0.4	0.2
ULG-22-108	372710.2	551455.7	-242.8	374.8	-44.2	359.7	322.58	322.87	0.29	0.1	0.0	0.1	0.0
ULG-22-109	372710.1	551455.8	-242.7	257.8	-34.7	15.9	218.10	218.65	0.55	0.4	0.8	0.0	0.0
ULG-22-110	372840.2	551418.4	-222.0	164.7	54.7	74.0	118.87	119.19	0.32	0.3	0.4	0.0	0.0
ULG-22-111	372710.0	551455.7	-242.8	269.8	-38.7	12.9	238.77	238.99	0.22	0.1	1.9	0.2	0.1
ULG-22-113	372710.0	551455.7	-243.0	347.7	-44.8	11.7	259.06	260.32	1.26	0.8	6.5	0.3	0.1
ULG-22-113	372710.0	551455.7	-243.0	347.7	-44.8	11.7	273.65	274.30	0.65	0.6	3.6	1.1	0.1
ULG-22-113	372710.0	551455.7	-243.0	347.7	-44.8	11.7	286.35	288.60	2.25	1.4	6.4	0.3	0.1
ULG-22-113	372710.0	551455.7	-243.0	347.7	-44.8	11.7	323.65	323.90	0.25	0.1	1.6	0.1	0.1
ULG-22-115	372709.3	551455.6	-242.7	267.0	-34.4	1.0	132.69	132.93	0.24	0.1	1.7	0.2	0.0
ULG-22-115	372709.3	551455.6	-242.7	267.0	-34.4	1.0	204.20	204.90	0.70	0.5	9.7	0.8	0.2
ULG-22-115	372709.3	551455.6	-242.7	267.0	-34.4	1.0	222.02	227.21	5.19	3.6	5.3	0.2	0.1
ULG-22-116	373870.2	550888.8	-386.8	338.8	10.0	325.3	-	-	-	-	Porphyry Obscured		
ULG-22-116	373870.2	550888.8	-386.8	338.8	10.0	325.3	254.58	254.77	0.19	0.1	1.5	0.1	0.0
ULG-22-117	372709.4	551455.6	-242.8	306.0	-39.6	0.2	241.27	243.16	1.89	1.4	12.4	0.4	0.3
ULG-22-117	372709.4	551455.6	-242.8	306.0	-39.6	0.2	250.60	251.00	0.40	0.2	0.6	0.0	0.0
ULG-22-117	372709.4	551455.6	-242.8	306.0	-39.6	0.2	277.00	278.00	1.00	0.5	1.2	0.1	0.0
ULG-22-118	373870.0	550888.2	-387.0	386.9	11.8	316.8	276.03	276.38	0.35	0.1	14.8	0.6	0.1
ULG-22-119	372710.4	551455.8	-242.8	459.0	-48.0	10.6	308.60	309.25	0.65	0.1	3.6	0.4	0.1
ULG-22-119	372710.4	551455.8	-242.8	459.0	-48.0	10.6	363.60	363.72	0.12	0.0	0.1	0.1	0.0
ULG-22-120	373871.6	550888.8	-386.9	491.9	10.2	307.8	383.05	388.85	5.80	1.4	3.7	0.4	0.1
ULG-22-121	372709.5	551455.6	-242.7	300.0	-38.7	25.5	230.83	234.66	3.83	1.8	7.4	0.5	0.1
ULG-22-124	373872.9	550888.9	-387.3	290.8	4.4	330.8	272.56	273.46	0.90	-	0.0	0.0	0.0
ULG-22-126	373872.4	550888.9	-386.4	356.7	18.7	323.4	-	-	-	-	Porphyry Obscured		
ULG-22-126	373872.4	550888.9	-386.4	356.7	18.7	323.4	287.15	288.03	0.88	0.6	0.5	0.0	0.0
ULG-22-126	373872.4	550888.9	-386.4	356.7	18.7	323.4	-	-	-	-	Porphyry Obscured		
ULG-22-128	373870.0	550888.2	-387.0	310.7	-0.7	324.0	209.16	209.74	0.58	0.3	7.2	0.7	0.1
ULG-22-130	373870.0	550888.2	-387.0	443.6	17.9	313.5	328.33	329.86	1.53	0.7	11.8	0.8	0.3
ULG-22-130	373870.0	550888.2	-387.0	443.6	17.9	313.5	350.25	350.38	0.13	0.1	0.1	0.0	0.0
ULG-22-132	373870.0	550888.2	-387.0	443.7	12.8	312.3	323.34	323.80	0.46	0.3	1.9	0.1	0.0
ULG-22-132	373870.0	550888.2	-387.0	443.7	12.8	312.3	-	-	-	-	Porphyry Obscured		
ULG-22-132	373870.0	550888.2	-387.0	443.7	12.8	312.3	345.37	345.75	0.38	0.3	1.0	0.1	0.0
ULG-22-134	373870.0	550888.2	-387.0	386.8	6.9	311.1	291.45	292.00	0.55	0.3	1.1	0.2	0.0
ULG-22-134	373870.0	550888.2	-387.0	386.8	6.9	311.1	293.00	294.40	1.40	-	3.7	0.1	0.1
ULG-22-134	373870.0	550888.2	-387.0	386.8	6.9	311.1	310.20	310.77	0.57	0.2	1.6	0.1	0.0
ULG-22-177	372539.7	551407.3	-178.6	137.5	22.9	14.1	96.78	96.83	0.05	0.0	1.6	0.2	0.3
ULG-22-177	372539.7	551407.3	-178.6	137.5	22.9	14.1	105.63	105.97	0.34	0.2	0.5	0.2	0.0
ULG-22-179	372539.7	551407.3	-178.6	152.6	16.5	42.1	125.55	125.62	0.07	0.0	4.1	0.2	0.1
ULG-22-181	372539.7	551407.3	-178.6	155.9	6.9	51.3	-	-	-	-	Hole Abandoned		

Section 1: Sampling Techniques and Data (criteria in this section apply to all succeeding sections)

Criteria	JORC Code explanation	Commentary
Sampling techniques	<ul style="list-style-type: none"> Nature and quality of sampling (e.g. cut channels, random chips, or specific specialised industry standard measurement tools appropriate to the minerals under investigation, such as downhole gamma sondes, or handheld XRF instruments, etc.). These examples should not be taken as limiting the broad meaning of sampling. Include reference to measures taken to ensure sample representivity and the appropriate calibration of any measurement tools or systems used. Aspects of the determination of mineralisation that are Material to the Public Report. In cases where 'industry standard' work has been done this would be relatively simple (e.g. 'reverse circulation drilling was used to obtain 1m samples from which 3kg was pulverised to produce a 30g charge for fire assay'). In other cases, more explanation may be required, such as where there is coarse gold that has inherent sampling problems. Unusual commodities or mineralisation types (e.g. submarine nodules) may warrant disclosure of detailed information. 	<ul style="list-style-type: none"> All drilling at Golden Mile, Long, Durkin North and LN04a is underground diamond drilling undertaken by a reputable contractor in line with industry best practise. All drilling at the Hartley Prospect is surface diamond drilling undertaken by a reputable contractor in line with industry best practise. Diamond drill core samples include PQ3, HQ3 and NQ2 diameter core. Diamond drill core has been orientated, photographed, logged in full and marked up for cutting and sampling. The average sample length is 1m, and the minimum and maximum sample lengths are 0.05m and 2m, respectively. Nickel sulphide mineralisation is visible in the drill core and between 5-10 metres before and after mineralised intersections are sampled routinely. For diamond drill core, representivity is ensured by sampling to geological contacts and following the long axis of the core when cutting the core in half. Average sample sizes are between 2.5-3.5kg and are considered appropriate and representative for this type of mineralisation and drilling. Historical diamond drilling and sampling procedures followed by IGO Limited (IGO) at Long Mine are considered of a high standard and in line with industry best practise. Only diamond drill holes completed by IGO are those with a prefix LG, and all holes pertaining to LN04a are reported in Appendix 3 above.
Drilling techniques	<ul style="list-style-type: none"> Drill type (e.g. core, reverse circulation, open-hole hammer, rotary air blast, auger, Bangka, sonic, etc.) and details (e.g. core diameter, triple or standard tube, depth of diamond tails, face-sampling bit or other type, whether core is oriented and if so, by what method, etc.). 	<ul style="list-style-type: none"> Surface and underground diamond drilling accounts for 100% of the drilling completed by Mincor. Diamond drill core is PQ3, HQ3 and NQ2 diameter. IGO drilling utilised conventional underground drilling methods in line with best industry practise.
Drill sample recovery	<ul style="list-style-type: none"> Method of recording and assessing core and chip sample recoveries and results assessed. Measures taken to maximise sample recovery and ensure representative nature of the samples. Whether a relationship exists between sample recovery and grade and whether sample bias may have occurred due to preferential loss/gain of fine/coarse material. 	<ul style="list-style-type: none"> Diamond drill core recoveries are measured for each drill run. Overall recoveries are generally >99%. Only in areas of core loss are recoveries recorded and adjustments made to metre marks. There is no relationship between grade and core loss. Re-examination of the IGO diamond drill core indicates that drill core recoveries were very high, and no issues were noted.

Criteria	JORC Code explanation	Commentary
Logging	<ul style="list-style-type: none"> Whether core and chip samples have been geologically and geotechnically logged to a level of detail to support appropriate Mineral Resource estimation, mining studies and metallurgical studies. Whether logging is qualitative or quantitative in nature. Core (or costean, channel, etc.) photography. The total length and percentage of the relevant intersections logged. 	<ul style="list-style-type: none"> All diamond drill core is geologically logged in full following established Mincor's procedures which include, but are not limited to, recording of lithology, mineralogy, mineralisation, alteration, colour. All geological data are data stored in the database. For diamond core, relevant structural and geotechnical information in line with the standard industry practises is recorded. Geological logging is both qualitative (e.g. colour) and quantitative (e.g. mineral percentages). Based on the available records geological and geotechnical logging procedures followed by IGO were in line with best industry practise and all relevant information was recorded.
Subsampling techniques and sample preparation	<ul style="list-style-type: none"> If core, whether cut or sawn and whether quarter, half or all core taken. If non-core, whether riffled, tube sampled, rotary split, etc. and whether sampled wet or dry. For all sample types, the nature, quality, and appropriateness of the sample preparation technique. Quality control procedures adopted for all subsampling stages to maximise representivity of samples. Measures taken to ensure that the sampling is representative of the in-situ material collected, including for instance results for field duplicate/second-half sampling. Whether sample sizes are appropriate to the grain size of the material being sampled. 	<ul style="list-style-type: none"> Following geological logging and photographing diamond core was cut in half using Almonte automatic core cutter. One half is sent to the laboratory for assaying and the other half retained in core trays. Sample lengths do not cross geological boundaries and are typically 1m per individual sample. Most of the mineralised intersections are massive, matrix and disseminated nickel bearing sulphides hosted in ultramafic and/or mafic and intrusive (immediate and felsic) lithologies. Field QC procedures include use of certified reference materials (CRM) as assay standard and blanks. The average insertion rates of these are between 5 to 10%. No field duplicates have been done to date. Sample sizes are considered appropriate for this style of mineralisation and rock types. Sample preparation follows industry best practise involving oven drying, crushing, splitting and pulverisation (total preparation). Based on the available records IGO sampling and sampling preparation methods were all in line with the industry best practise.

Criteria	JORC Code explanation	Commentary
Quality of assay data and laboratory tests	<ul style="list-style-type: none"> The nature, quality and appropriateness of the assaying and laboratory procedures used and whether the technique is considered partial or total. For geophysical tools, spectrometers, handheld XRF instruments, etc., the parameters used in determining the analysis including instrument make and model, reading times, calibrations factors applied and their derivation, etc. Nature of quality control procedures adopted (e.g. standards, blanks, duplicates, external laboratory checks) and whether acceptable levels of accuracy (i.e. lack of bias) and precision have been established. 	<ul style="list-style-type: none"> Samples are submitted to Bureau Veritas Mineral Laboratories in Canning Vale for sample preparation and assaying. The analytical techniques used are four acid digest multi element suite with ICP-AES finish and includes Ni, Cu, Co, Cr, As, Mg, Al, Fe, Ti, Zn and S. Reference standards and blanks are routinely added to every batch of samples. Total QAQC samples make up between 5% to 10% of all samples. Laboratory QAQC involves the use of internal standards using CRM, blanks, splits and replicates as part of the in-house procedures. Repeat and/or duplicate analysis indicate that precision of samples assayed is within acceptable limits. Monthly QAQC reports are compiled by database consultants Maxgeo and distributed to Mincor. Based on the available records IGO assay protocols and methods were all in line with the industry best practise.
Verification of sampling and assaying	<ul style="list-style-type: none"> The verification of significant intersections by either independent or alternative company personnel. The use of twinned holes. Documentation of primary data, data entry procedures, data verification, data storage (physical and electronic) protocols. Discuss any adjustment to assay data. 	<ul style="list-style-type: none"> Nickel mineralisation is highly visible and significant intersections have not been independently verified. Mincor's Group Mine Geologist and/or General Manager - Exploration have reviewed mineralised intersections. To date, Mincor has not twinned any diamond drill holes. Holes are logged using LogChief on laptop computers using lookup codes. The information was sent to Maxgeo consultants for validation and uploading into Datashed format SQL database. Maxgeo have their own in-built libraries and validation routines and assays are checked before being uploaded. Based on the available database records IGO assay protocols and methods were all in line with the industry best practise.
Location of data points	<ul style="list-style-type: none"> Accuracy and quality of surveys used to locate drill holes (collar and down-hole surveys), trenches, mine workings and other locations used in Mineral Resource estimation. Specification of the grid system used. Quality and adequacy of topographic control. 	<ul style="list-style-type: none"> Underground collars are set out by Mincor's registered surveyor in local mine grid. Surface drill collars are picked by Mincor's registered surveyor in MGA94 Zone 51 grid. Current Mincor underground holes are collar set-up using Devicloud Azialigner All diamond holes were surveyed by a reputable drilling contractor using a DeviGyro gyroscopic survey instrument which has a stated azimuth and dip accuracy of $\pm 0.1^\circ$. Based on the available database records IGO down hole survey methods were all in line with the industry best practise.

Criteria	JORC Code explanation	Commentary
Data spacing and distribution	<ul style="list-style-type: none"> • Data spacing for reporting of Exploration Results. • Whether the data spacing and distribution is sufficient to establish the degree of geological and grade continuity appropriate for the Mineral Resource and Ore Reserve estimation procedure(s) and classifications applied. • Whether sample compositing has been applied. 	<ul style="list-style-type: none"> • Current planned drill-hole spacing at the Durkin North and LN04a is 80m x 40m, and additional infill holes in-between drill sections may be required to understand geological complexity and continuity of mineralisation. • Current planned drill-hole spacing at the Golden Mile and Hartley prospect is broad and varies between 80m to 400m spaced sections with drill-hole spacing on sections between 40m to 200m. • Further infill drilling may be required for Resource Estimation.
Orientation of data in relation to geological structure	<ul style="list-style-type: none"> • Whether the orientation of sampling achieves unbiased sampling of possible structures and the extent to which this is known, considering the deposit type. • If the relationship between the drilling orientation and the orientation of key mineralised structures is considered to have introduced a sampling bias, this should be assessed and reported if material. 	<ul style="list-style-type: none"> • As much as possible, drill holes targeting the Golden Mile, Durkin North and LN04a ore surface are designed to intersect mineralisation orthogonally to strike orientation. • At Golden Mile, Durkin North and LN04a where targeting involves drilling from other than orthogonal directions to strike, mineralisation true width estimates are reviewed and updated using structural data and well-understood orientation of the footwall basalt surfaces, to which on contact mineralisation is generally sub-parallel. • Surface drill-holes at Hartley intersect at nearly 90 degrees to contact and the contact is relatively planar, so no bias is expected. • Sampling bias by sample orientation relative to structures, mineralised zones and shear zones is considered very minimal and not material because of the routine use and implementation of the above stated methodologies.
Sample security	<ul style="list-style-type: none"> • The measures taken to ensure sample security. 	<ul style="list-style-type: none"> • Sample chain of custody is managed by Mincor. • Drill core is delivered to core logging yard by drilling contractor and is in the custody of Mincor employees up until it is sampled. • Samples are either delivered to the laboratory by recognised freight service provided or are delivered directly by Mincor employees. • Laboratory checks samples received against sample submission forms and notifies Mincor of any discrepancies. • Based on the available records IGO have followed the industry best practice in relation to sample security.
Audits or reviews	<ul style="list-style-type: none"> • The results of any audits or reviews of sampling techniques and data. 	<ul style="list-style-type: none"> • In-house audits of data are undertaken on a periodic basis.

Section 2: Reporting of Exploration Results (criteria listed in the preceding section also apply to this section)

Criteria	JORC Code explanation	Commentary
Mineral tenement and land tenure status	<ul style="list-style-type: none"> Type, reference name/number, location and ownership including agreements or material issues with third parties such as joint ventures, partnerships, overriding royalties, native title interests, historical sites, wilderness or national park and environmental settings. The security of the tenure held at the time of reporting along with any known impediments to obtaining a licence to operate in the area. 	<ul style="list-style-type: none"> All resources are located within 100% Mincor Resources NL owned tenure. LN04a and the Long Operation are located within Location 48 Lot 13 (Freehold land) and are 100% owned by Mincor Resources NL. Durkin North Operation is within Location 48 Lot 12 (Freehold land) and is 100% owned by Mincor Resources NL. Hartley Prospect is located on M15/88 and M15/89 and is 100% owned by Mincor Resources NL.
Exploration done by other parties	<ul style="list-style-type: none"> Acknowledgment and appraisal of exploration by other parties. 	<ul style="list-style-type: none"> WMC and IGO have explored Long Deposit, and WMC has explored Durkin and Durkin North Orebodies in the past, however there was only limited historical drilling within the LN04a. WMC and Anaconda have previously explored the Hartley area, but Mincor has subsequently done most of the drilling work. The work completed by WMC, Anaconda and IGO is considered to be a very high standard.
Geology	<ul style="list-style-type: none"> Deposit type, geological setting and style of mineralisation. 	<ul style="list-style-type: none"> All the mineralisation and deposits discussed and reported herein are typical of the “Kambalda” style nickel sulphide deposits.
Drill-hole information	<ul style="list-style-type: none"> A summary of all information material to the understanding of the exploration results including a tabulation of the following information for all Material drill-holes: <ul style="list-style-type: none"> easting and northing of the drill hole collar elevation or RL (Reduced Level – elevation above sea level in metres) of the drill-hole collar dip and azimuth of the hole downhole length and interception depth hole length. If the exclusion of this information is justified on the basis that the information is not Material and this exclusion does not detract from the understanding of the report, the Competent Person should clearly explain why this is the case. 	<ul style="list-style-type: none"> All drill hole collar locations and other relevant information are provided within the body of the report and within tables in Appendix 3 of this release.
Data aggregation methods	<ul style="list-style-type: none"> In reporting Exploration Results, weighting averaging techniques, maximum and/or minimum grade truncations (e.g. cutting of high grades) and cut-off grades are usually Material and should be stated. Where aggregate intercepts incorporate short lengths of high-grade results and longer lengths of low grade results, the procedure used for such aggregation should be stated and some typical examples of such aggregations should be shown in detail. The assumptions used for any reporting of metal equivalent values should be clearly stated. 	<ul style="list-style-type: none"> Composites are calculated as the length and density weighted average to a 1% Ni cut-off. Composites may contain internal waste; however, the 1% composite must carry in both directions. Unless otherwise noted. The nature of nickel sulphides is that these composites include massive sulphides (8–20% Ni), matrix sulphides (4–8% Ni) and disseminated sulphides (1–4% Ni). The relative contributions can vary markedly within a single orebody.

Criteria	JORC Code explanation	Commentary
Relationship between mineralisation widths and intercept lengths	<ul style="list-style-type: none"> These relationships are particularly important in the reporting of Exploration Results. If the geometry of the mineralisation with respect to the drill-hole angle is known, its nature should be reported. If it is not known and only the down hole lengths are reported, there should be a clear statement to this effect (e.g. 'down hole length, true width not known'). 	<ul style="list-style-type: none"> The general strike and dip of the basalt contact within Long, Durkin North orebodies, Golden Miles, LN04a and Hartley prospects and individual ore surfaces is well understood, modelled in 3D and the 3D model is being updated continuously as the new drill data becomes available. Contact nickel sulphide mineralised surfaces, such as LN04a, generally follow orientation of the basal footwall, which enables calculations of true widths of mineralisation, irrespective of the drill hole angles. As much as possible, drill holes are designed to intersect mineralisation orthogonally to strike orientation. True width estimates are reviewed and updated as more drilling is completed, and accuracy increases with higher drill density and confidence in geological interpretation.
Diagrams	<ul style="list-style-type: none"> Appropriate maps and sections (with scales) and tabulations of intercepts should be included for any significant discovery being reported. These should include, but not be limited to a plan view of drill hole collar locations and appropriate sectional views. 	<ul style="list-style-type: none"> Appropriate diagrams are provided in the main body of this report.
Balanced reporting	<ul style="list-style-type: none"> Where comprehensive reporting of all Exploration Results is not practicable, representative reporting of both low and high grades and/or widths should be practiced to avoid misleading reporting of Exploration Results. 	<ul style="list-style-type: none"> Golden Mile, Durkin North and LN04a pierce points are represented on the images in body of the report. Hartley prospect drill holes are represented on the long section in body of report. Drill collar locations and other relevant information is provided in the appendices. All assay information are included in this report. This report provides sufficient context and is considered balanced.

Criteria	JORC Code explanation	Commentary
Other substantive exploration data	<ul style="list-style-type: none"> Other exploration data, if meaningful and material, should be reported including (but not limited to): geological observations; geophysical survey results; geochemical survey results; bulk samples – size and method of treatment; metallurgical test results; bulk density, groundwater, geotechnical and rock characteristics; potential deleterious or contaminating substances. 	<ul style="list-style-type: none"> Downhole electromagnetic modelling has been used to support geological interpretation where available. Downhole electromagnetic surveys have been completed by GEM Geophysics and Southern Geoscience Consultants. Survey details are: <ul style="list-style-type: none"> Loop Sizes: 300m x 300m/ 300m x 400m / 400m x 400m Station Spacing: 10m / 5m / 2m Intervals Sensor: EMIT DigiAtlantis Tx Current: 58 >> 75 Amps Tx Frequency: 0.5Hz Moving-loop electromagnetic surveys were completed by GEM Geophysics. MLEM details are: <ul style="list-style-type: none"> Loop Size: 200m x 200m Station Spacing: 100m Sensor: Jessy Deeps HT Squid Tx Current: ~80 Amps Tx Frequency: 0.125Hz Drilling within the Golden Mile, Durkin North LN04a is ongoing.
Further work	<ul style="list-style-type: none"> The nature and scale of planned further work (e.g. tests for lateral extensions or depth extensions or large-scale step-out drilling). Diagrams clearly highlighting the areas of possible extensions, including the main geological interpretations and future drilling areas, provided this information is not commercially sensitive. 	<ul style="list-style-type: none"> The LN04a Surface mineralised surface remains open along strike and up-dip. Durkin North orebodies remain open along strike. Further underground drilling is planned on 80m by 40m drill spacing to test for the along strike and up-dip extensions of the presently defined LN04a Surface extent and Durkin North resources. Additional drill holes in-between existing drill sections maybe required to improve confidence in geological interpretation. The above proposed drill spacing is considered sufficient for future detailed geological modelling and future resource estimation work.