



Grow – Optimise – Develop

February 2023 | ASX: TRE | TSX-V: TRE

Disclaimer

This Presentation is for information purposes in connection with Toubani Resources Inc.'s known as "TRE" or the "Company"(s) preliminary business plan only. While the information contained herein has been prepared in good faith, neither the Company nor any of its shareholders, directors, officers, agents, employees, consultants or advisers give, have given or have authority to give, any representations or warranties (express or implied) as to, or in relation to, the accuracy, reliability, completeness or suitability of the information in this Presentation, or any revision thereof, or of any other written or oral information made or to be made available to any interested party or its advisers (all such information being referred to as "Information") and liability therefore is expressly disclaimed.

Accordingly, neither the Company nor any of its shareholders, directors, officers, agents, employees, consultants or advisers, take any responsibility for, or will accept any liability whether direct or indirect, express or implied, contractual, tortious, statutory or otherwise, in respect of the accuracy or completeness of the Information or for any of the opinions contained herein or for any errors, omissions or misstatements or for any loss, howsoever arising or out of or in connection with the use of this Presentation. Each party to whom this Presentation is made available must make its own independent assessment of the Company and the Presentation after making such investigations and taking such advice as may be deemed necessary. Any reliance placed on the Presentation is strictly at the risk of such person relying on such Presentation.

This Presentation may contain forward-looking statements regarding the Company and its subsidiaries. These statements are based on various assumptions made by the Company. Such assumptions are subject to factors which are beyond our control and which involve known and unknown risks, uncertainties and other factors which may cause our actual results, performance or achievements to be materially different from any future results, performances or achievements expressed or implied by the forward-looking statements. Forward-looking statements may in some cases be identified by terminology such as "may", "will", "could", "should", "expect", "plan", "intend", "anticipate", "believe", "estimate", "predict", "potential" or "continue", the negative of such terms or other comparable terminology. These forward-looking statements are only predictions. Actual events or results may differ materially, and a number of factors may cause our actual results to differ materially from any such statement. Such factors include among others general market conditions, demand for our products, development in reserves and resources, unpredictable changes in regulations affecting our markets, market acceptance of products and such other factors that may be relevant from time to time.

Although we believe that the expectations and assumptions reflected in the statements are reasonable, any person relying on such Information and Presentation are cautioned that we cannot guarantee future results, levels of activity, performance or achievement. In preparing this Presentation and except as required by law, we do not undertake or agree to any obligation or responsibility to provide the recipient with access to any additional information or to update this Presentation or Information or to correct any inaccuracies in, or omission from this Presentation or to update publicly any forward-looking statements for any reason after the date of this Presentation to conform these statements to actual results or to changes in our expectations.

This Presentation does not constitute an offer or invitation to sell, or any solicitation of any offer to subscribe for or purchase any securities of the Company and its subsidiaries and nothing contained herein shall form the basis of any contract or commitment whatsoever. Copies of this Presentation should not be distributed to any affiliates, third parties or indirect recipients in any manner whatsoever. The distribution of this Presentation in or to persons subject to other jurisdiction may be restricted by law and persons into whose possession this Presentation comes should inform themselves about, and observe any such restrictions. Any failure to comply with these restrictions may constitute a violation of the laws of the relevant jurisdictions.

The information contained in this presentation, including information provided by third parties, has not been independently verified and no representation or warranty, express or implied, is made as to, and no reliance should be placed on, the fairness, accuracy, completeness, correctness or timeliness of the information or opinions expressed herein. Similarly, certain graphics contained in this presentation have been provided by third parties and no reliance should be placed on such graphics being representations of the Company and its projects.

This Presentation is strictly confidential and may not be reproduced, disseminated or used without the express and written consent of the Company. The Information in this Presentation concerning the business and its affairs, shareholders, directors, officers, agents, employees, consultants or advisers or any other matter must be kept confidential at all times. If the Company suffers loss, damage or liability of any kind in connection with your breach of the restriction on reproduction or use, you will indemnify the Company from and against such loss, damage or liability.

Disclaimer

COMPETENT PERSON

The information in this announcement that relates to exploration results, geology and mineral resources is extracted from the Company's prospectus dated 12 September 2022 and released on ASX on 25 November 2022 (**Prospectus**) which is available on the ASX announcements platform. The information in the Prospectus that relates to exploration results, geology and mineral resources was based on, and fairly represents, information compiled by Mr Uwe Engelmann, a Competent Person, who is a member of the South African Council for Natural Scientific Professions: Professional Scientist (Reg. No. 400058/08), a Recognised Professional Organisation included in a list that is posted on the ASX website from time to time. Mr Engelmann is employed by Minxcon (Pty) Ltd, an independent consulting company. Mr Engelmann has sufficient experience, which is relevant to the style of mineralisation and type of deposit under consideration, and to the activity he is undertaking, to qualify as a Competent Person as defined in the 2012 Edition of the 'Australasian Code for Reporting of Exploration Results, Mineral Resources and Ore Reserves'.

The information in this announcement that relates to mining and ore reserves is extracted from the Prospectus which is available on the ASX announcements platform. The information in the Prospectus that relates to exploration results, geology and mineral resources was based on, and fairly represents, information compiled by Mr Ghislain Prévost, a Competent Person, who is a Professional Engineer in the Province of Quebec (Ordre des Ingénieurs du Québec) (Reg. No. 119054), a Recognised Professional Organisation included in a list that is posted on the ASX website from time to time. Mr Prévost is employed by DRA Global Limited, an independent consulting company. Mr Prévost has sufficient experience, which is relevant to the style of mineralisation and type of deposit under consideration, and to the activity he is undertaking, to qualify as a Competent Person as defined in the 2012 Edition of the 'Australasian Code for Reporting of Exploration Results, Mineral Resources and Ore Reserves'.

The Company confirms that:

- it is not aware of any new information or data that materially affects the information included in the Prospectus;
- all material assumptions and technical parameters included in the Prospectus continue to apply and have not materially changed; and
- the form and context in which the relevant Competent Persons' findings are presented in this announcement have not been materially changed from the Prospectus.

The information in this announcement that represent production targets and forecast financial information derived from production targets is extracted from the Technical Assessment Report in Annexure D of the Prospectus which is available on the ASX announcements platform. The Company confirms that all material assumptions underpinning the production target and forecast financial information derived from production targets contained in the Technical Assessment Report in Annexure D of the Prospectus continue to apply and have not material changed from the Prospectus.

Why Toubani?

Kobada gold project is a strategic development asset in a prolific West African gold district

Strategic Development Asset

- Kobada deposit is a large, oxide open pit deposit with 3.1Moz defined across a continuous 4.5km
- Remains open at depth and along strike

Oxide Resource Growth

- Oxide district potential is significant at Kobada with active regional drilling activity
- Numerous near-surface targets with previous mineralised intercepts yet to be followed up

Technical Optimisation

- 2021 DFS demonstrated a low technical risk project capable of producing ~100,000ozpa for 10 years at a capital cost of US\$167 million
- Several levers identified to increase and extend the production profile and boost the economics further

Corporate Activity

- West Africa is a hot-spot for activity with several development projects recently reaching production and heightened corporate activity amongst gold developers in the region over the past ~24 months
- Well-positioned for an improved 2023 gold market

Experienced Team

- Management and Board composition has a strong background in discoveries, project and resource development, capital markets, strategy and M&A in Africa, and globally
- New management and development team follows recent ASX listing

Compelling Valuation

- Severely discounted on an EV/oz to relevant African peer companies and precedent M&A transactions
- Reflects Toubani's past under-the-radar history prior to listing on the ASX

Corporate Overview

Capital Structure

Basic Shares
Outstanding

102.2 M

Fully
Diluted

123.9 M

Cash

A\$5.4 M

Warrants

Strike Price: A\$0.42 –
A\$0.70

11.9 M

Options

Strike Price: A\$0.28 –
A\$0.78

9.8 M

Market Capitalization

As of January 17th, 2023

~A\$17 M

Shareholder Structure

Institutional
Investors

25.8 %

Australian based
Investors

35.9 %

Management
& Directors

4.7 %

North American based
Investors

60.9 %

Experienced Leadership



Phil Russo | Chief Executive Officer & Executive Director

Mr. Russo is an experienced mining and finance professional with more than 18 years experience in corporate, project development and capital markets functions. Mr. Russo's experience includes various executive roles within corporate development, project development and capital markets at Barrick Gold, Dacian Gold and Perseus Mining, as well as period at a US-listed investment bank focused on the metals and mining sector.



Danny Callow | Executive Chairman

Danny Callow has over 25 years of experience in building and operating mines in Africa. Mr. Callow was Head of African Copper Operations for Glencore PLC., Chief Executive Officer and Executive Director of Katanga Mining Limited and Chief Executive Officer of Mopani Copper Mines PLC. Mr. Callow is a Professional Mining Engineer and holds an MBA from Henley Management College and a Bachelor (Hons) of Mining Engineering from the Camborne School of Mines. Mr. Callow has overseen more than \$2.5 billion in mining projects from conception through to full production.



Jan-Erik Back | Non-Executive Director

Former Chief Investment Officer for Eurasian Resources Group with a specific focus on the financing and development of ERG's portfolio of copper and cobalt assets in Africa. Mr. Back has extensive experience in financial markets and has served as Global Head of Investments and Structured Finance Group at BTG Pactual Commodities, and previously spent over 10 years with the Hatch Group with a focus on project financing for mining projects.



Douglas Jendry | Non-Executive Director

Highly regarded geologist with over 40 years experience in the resources sector. Numerous CEO and Board positions in listed entities over the past 25 years. Global experience in all aspects of the resources industry as well as in management and fund raising for resource companies.



Tim Kestell | Non-Executive Director

Accomplished executive with over 25 years of experience in the capital markets, including working for HSBC, Patersons Securities and Euroz Securities Limited. Mr. Kestell played an instrumental role as a director and an investor in a number of companies in the mining sector, including Capricorn Metals and Emerald Resources NL, enabling the transition from explorer to producer stage.



Bill Oliver | Exploration & Resource Development

Mr. Oliver is a geologist with over 20 years of experience in the international resources industry working for both major and junior companies. Mr. Oliver has spent recent years in the development of projects across Africa including being responsible for the identification, acquisition, development and into production of the Konongo Gold Project in Ghana, and the delineation of over 3.5Moz at the Morila gold mine in Mali.



Kerry Griffin | Exploration & Resource Development

Mr. Griffin is a geologist and has over 27 years experience in Australia, Africa, South/Central America, Central and SE Asia in various senior and management positions. Mr. Griffin's experience includes mining, geology, mine development and management, as well as designing and managing large scale exploration and resource drilling programs, with significant expertise in resource modelling and estimation.



Paul Bozoki | Chief Financial Officer

Mr. Bozoki is a seasoned dual Canadian and U.S. CPA with approximately 25 years of accounting, tax and corporate finance experience. Mr. Bozoki has served as CFO of several development stage TSX and TSXV listed companies involved in gold, iron ore and phosphate projects in Canada and internationally.



Daniyal Baizak | Vice President, Corporate Development

Mr. Baizak has diverse financial and capital markets experience. Mr. Baizak brings experience in venture capital and investments from a global private merchant bank and having managed a number of private and public companies. Mr. Baizak holds a Bachelor of Commerce from Rotman School of Management, University of Toronto.



Sekou Konate | Country Manager

Mr. Konate is an experienced professional with over 22 years as a civil servant working for the Malian Ministry of Public Works and Transportation. Mr. Konate has over 20 years of experience facilitating exploration and mining activities in the Republic of Mali and has an established network of relationship within country.

Pathway Forward: Grow – Optimise – Develop

Focused on closing the valuation gap to peers

NEAR TERM

(Growth Phase)

US\$5/oz

TOUBANI'S EV/OZ TRADING
MULTIPLE TODAY

- **Raise global market profile** – Recently listed on ASX Dec '22
- **Test new prospects & extend known oxide mineralisation** – Gosso, Kobada Est, Kobada North & Kobada West show excellent geological potential yet are largely untested

MEDIUM TERM

(Optimisation & Development Phase)

US\$32/oz

PEER AVG EV/OZ TRADING
MULTIPLE TODAY

- **Technical optimisation** – Convert existing 0.7Moz of oxide resource not yet in Ore Reserves; define new oxide resources
- **Potential opportunities** – Increase oxide throughput rates and annual production, extend >1.0 g/t grade profile, defer sulphide capital, and boost overall economics

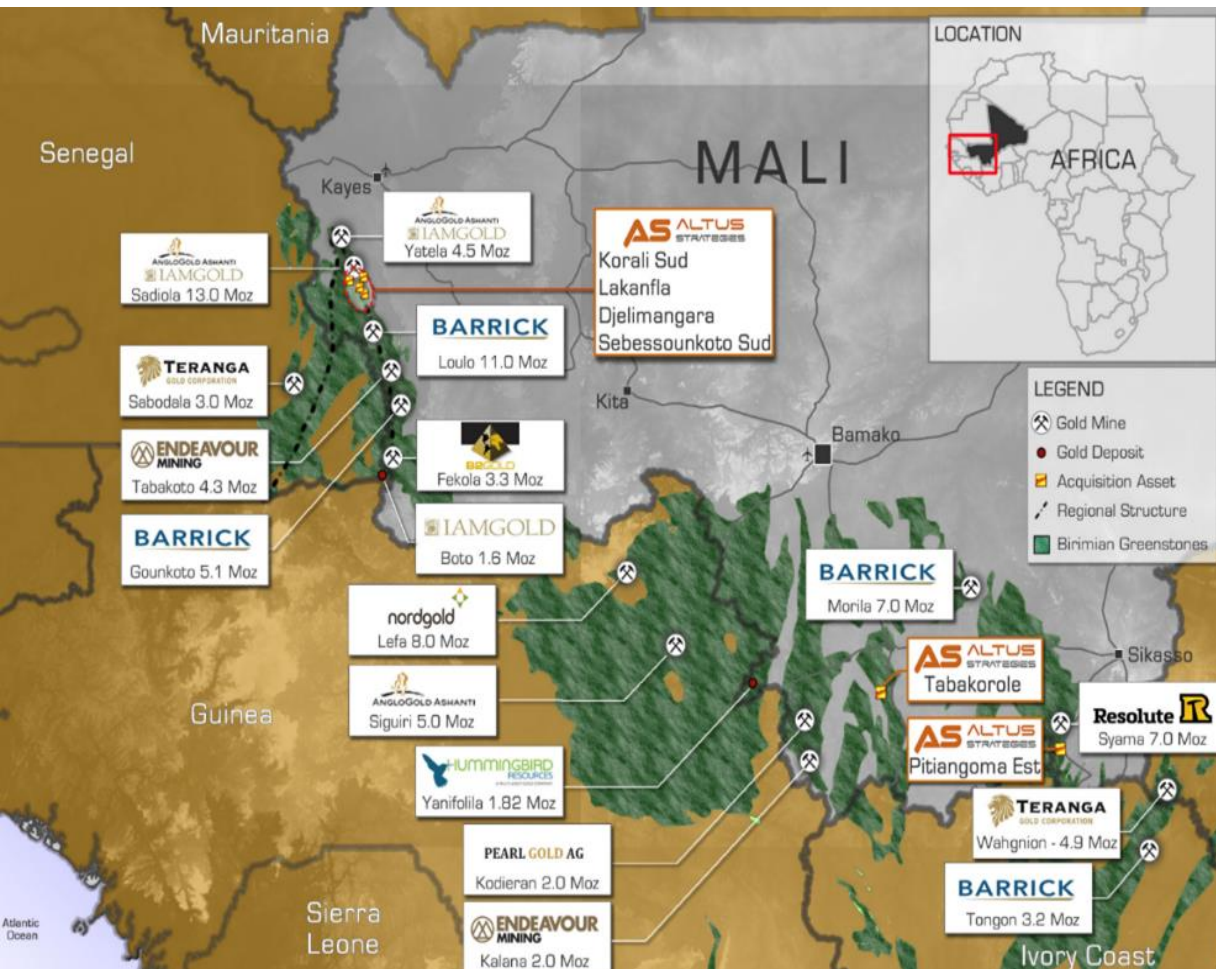
Developer Re-Rate

RARE DEVELOPMENT ASSET IN
HIGHLY ACTIVE REGION

- **Strategic development asset** – Large, low technical risk, oxide-dominant DFS projects command even higher trading multiples
- **District mineralisation** – Regional hotspot with Kobada part of a much larger gold system, yet significantly underexplored

Mali – A Long History of a Favourable Mining Environment

Africa's 4th largest gold producer with regional activity increasing



JURISDICTION

- Stable and mining friendly jurisdiction
- Transparent system of mineral and surface title
- Political and social support of mining with stated ambitions to develop mineral resources
- Mining industry is one of the largest contributors to the country's GDP
- ECOWAS sanctions now lifted

MINING INDUSTRY

- Well established mining industry
- Long and successful history of gold production
- Highly developed and active mining culture with major international companies operating in the country for decades (Barrick, AngloGold Ashanti, etc)
- Gold forms a significant part of Mali's total exports

GEOLOGY

- Birimian rocks are major sources of gold extending through Ghana, Côte d'Ivoire, Guinea, Mali and Burkina Faso
- Mali is the 4th largest gold producer in Africa, and continues to increase gold output year on year
- Major gold producers favoring Mali for exploration and output
- 22 world-class gold deposits, mostly orogenic gold systems

SECURITY

- Kobada is located in the Sikasso administrative region near the border with Guinea, 126km from Bamako
- Southern Mali is considered to be a stable environment, with security risk rated at low to medium

Kobada Gold Project

Significant prize defined with several opportunities to enhance

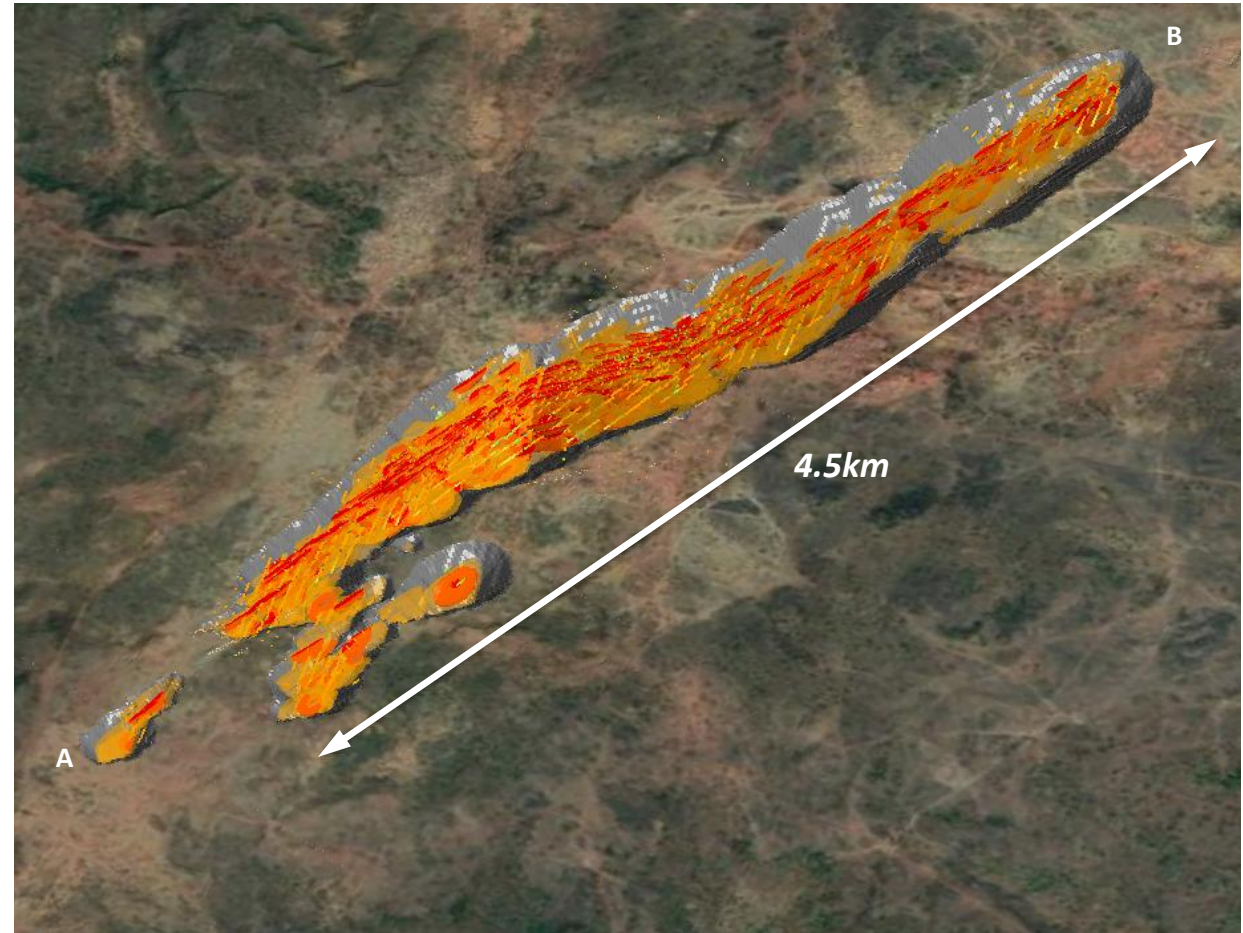
KOBADA MAIN DEPOSIT	<p>3.1Moz MRE¹ at 0.94 g/t</p>	<p>1.2Moz ORE² at 0.87 g/t</p> <ul style="list-style-type: none"> - Oxides form 75% of total ORE - Grade profile >1.0 g/t for Yrs 1-7 	<p>MRE defined within Kobada Main deposit only</p> <p>Several shear structures identified across the tenure</p>
GROWTH	<p>Testing the highest ranked, underexplored structures</p> <ul style="list-style-type: none"> - Gosso - Kobada Est - Kobada North - Kobada West 	<p>Expand and convert oxide mineral inventory</p> <ul style="list-style-type: none"> - Currently 0.7Moz in oxide resource outside ORE 	<p>~6.0km in strike extent to be tested in current 10,500m program</p>
2021 DFS	<p>~100,000oz pa for 10 years at an AISC of US\$972/oz</p>	<p>Technically simple project</p> <ul style="list-style-type: none"> - Open pit mining (free-dig of oxide material) - Conventional CIL processing methods 	<p>Initial capital cost of US\$167 million</p>



Kobada Main Deposit

Large, continuous 4.5km open pit with over 146,000m drilled to date

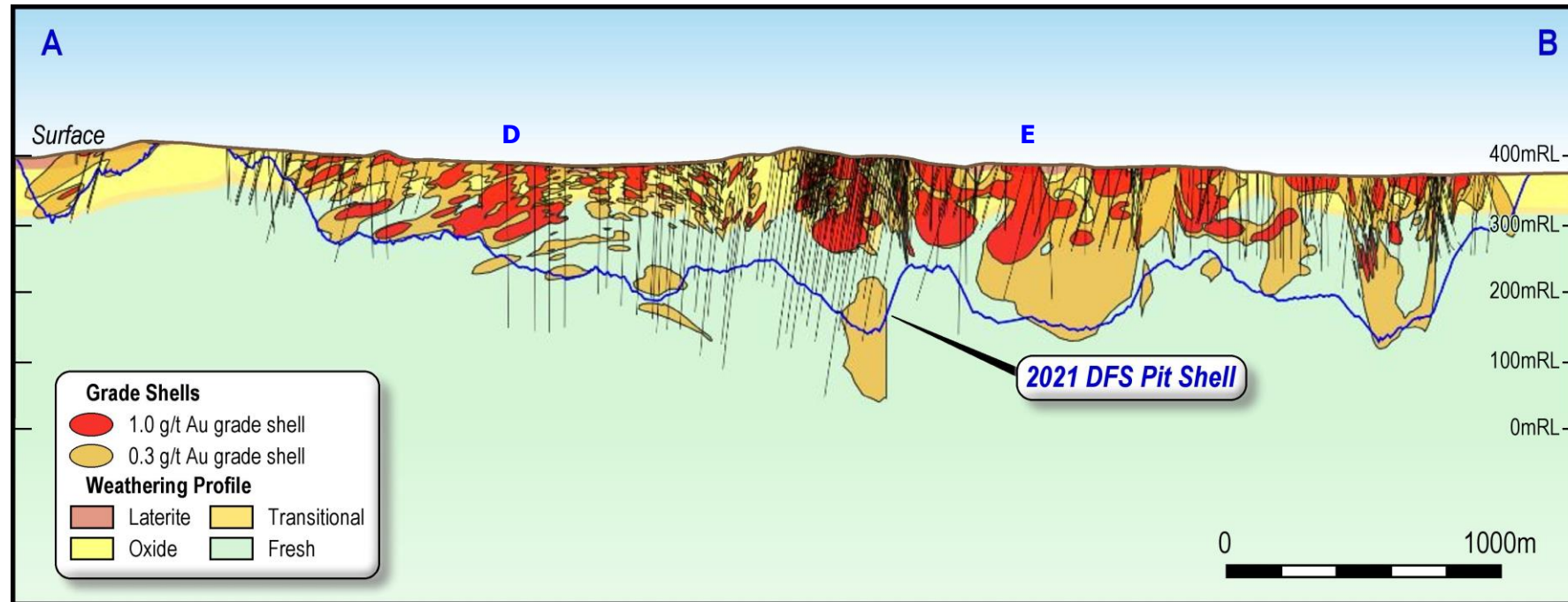
- Kobada Main deposit is a large, continuous 4.5km long open pit hosting global Mineral Resources of 3.1Moz
- Over 146,000m have been drilled to an average depth of ~110m
- Kobada remains open along strike in both directions and at depth
- Oxide depth averages 65m and can extend beyond 120m in some areas of the pit
- Low stripping ratio with mineralisation from surface
- Mineral Resources are constrained with an US\$1,800/oz pit shell



Mineral Resource Classification	Tonnes Mt	Au g/t	Au Koz
Measured	21.40	0.83	572
Indicated	40.15	0.88	1,139
Measured and Indicated Total	61.54	0.86	1,711
Inferred Total	42.03	1.06	1,433

Kobada Main Deposit

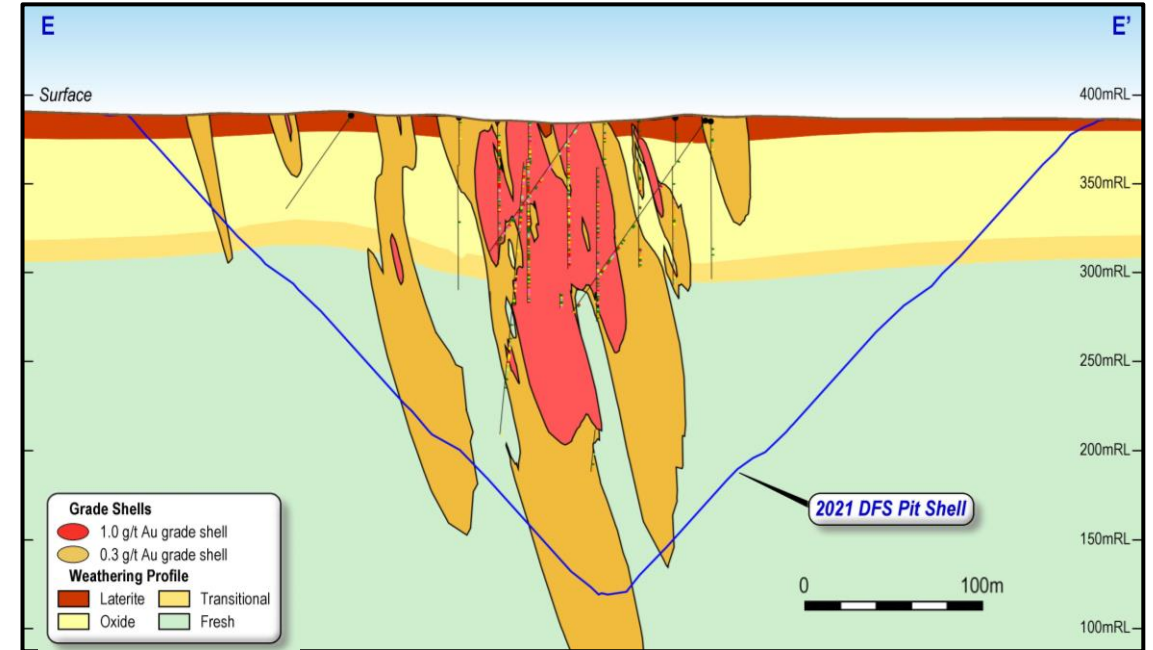
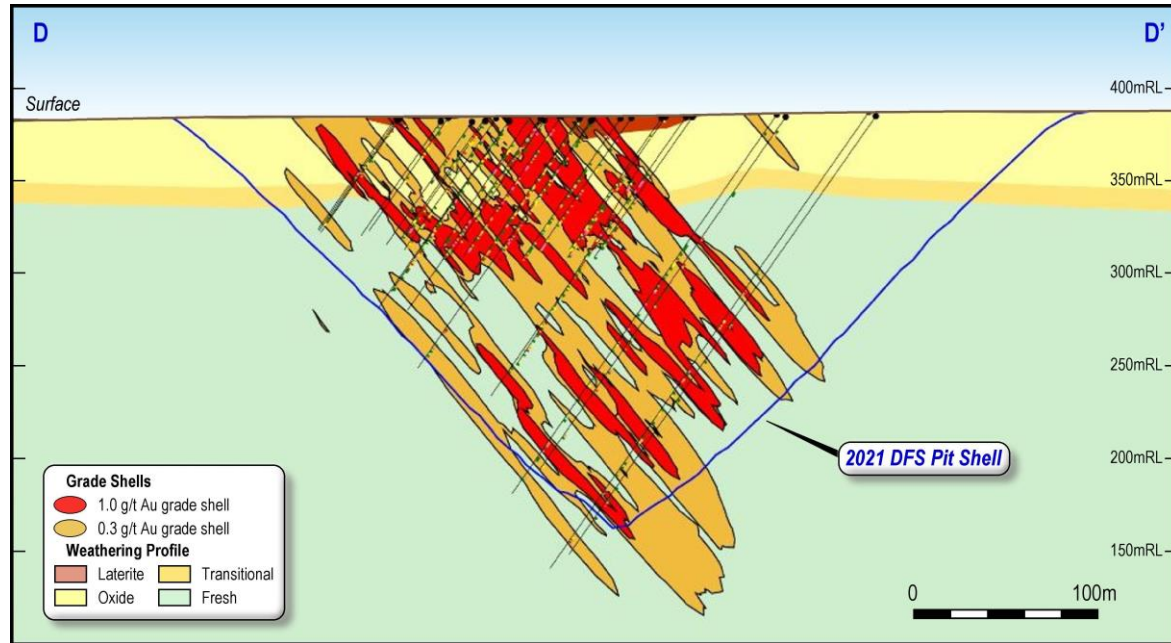
Mineralisation defined over strike length of 5.0km



- Long section showing drilling, depth of oxidation, >0.3 g/t and >1.0 g/t grade shells
- Mineral Resources (>0.3 g/t) defined over 5.0km of strike with close spaced drilling in oxide blanket
- Free dig, soft oxide ore able to be easily mined and processed; favourable economics vs a hard rock operation
- Extensive and continuous >1.0 g/t mineralisation which will be targeted in future resource delineation drilling and prioritised in mining schedule
- Additional upside below oxides with 1.5Moz in sulphide Mineral Resources with mineralization open at depth

Kobada Main Deposit

Mineralisation defined over 250m down dip



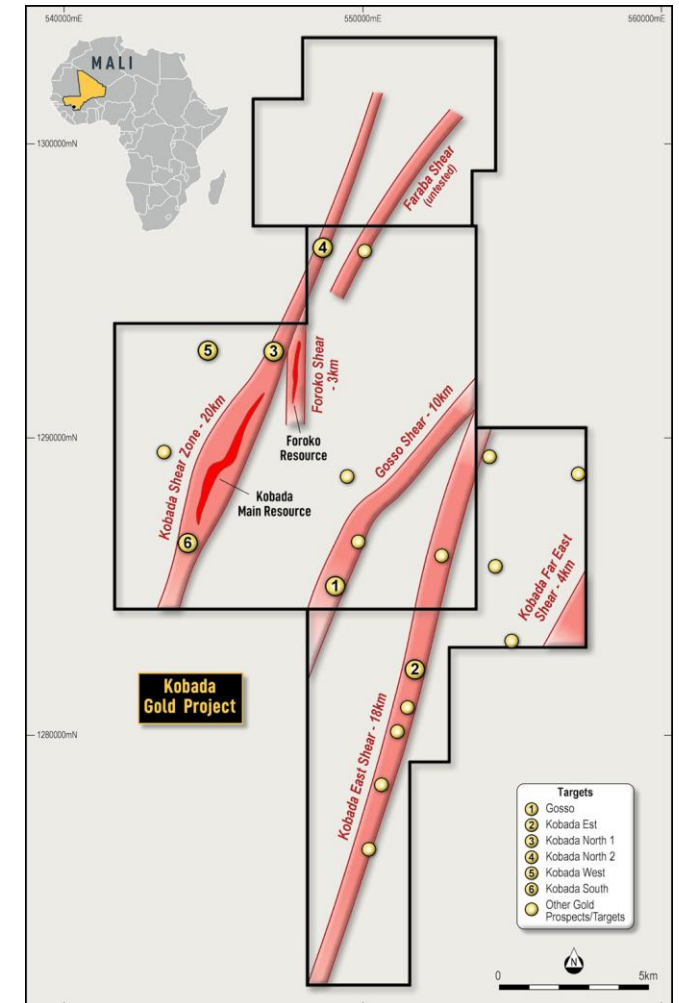
- Mineralisation defined to 250m below surface and remains open at depth
- Broad, continuous mineralisation >0.3 g/t well defined by drilling
- Continuity of >1.0 g/t mineralisation also apparent, potential to delineate further with targeted drilling

New Discoveries in an Established Gold District

Walk-up targets to test extent of near-surface oxide mineralisation

- Kobada is a large gold system in a prolific gold district with numerous near-surface targets
 - Over 153,000m of drilling focused primarily on the Kobada Main shear deposit
- 2023 drill program aims to test and define new areas of gold mineralisation outside the current MRE
- Current drill campaign focused on testing highest ranked prospects:
 1. Gosso
 2. Kobada Est
 3. Kobada North
 4. Kobada West
- Program to target over 6 km in previously untested strike across the above targets (in aggregate)
- Extensional drilling program at Kobada South also to be completed

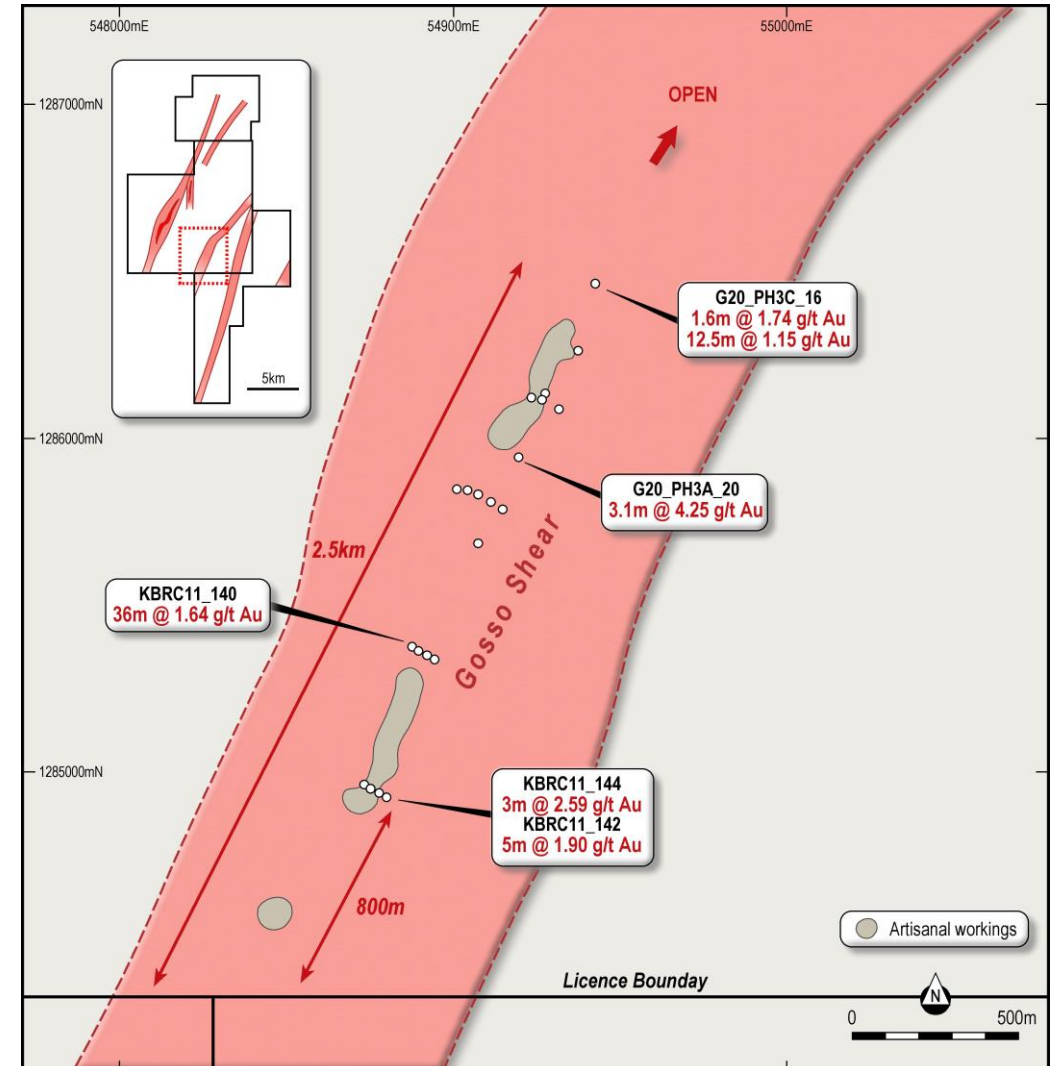
Target	Soil Geochemistry	Artisanal Mining	Geophysics Trends	Historical Drillholes	Orebody Model	Auger Drilling
Gosso	✓	✓	✓	✓	✓	
Kobada Est	✓	✓				✓
Kobada North 1	✓	✓	✓	✓		
Kobada North 2	✓	✓	✓			
Kobada West	✓	✓				
Kobada South	✓	✓	✓	✓	✓	



Target 1 – Gosso

Underexplored and highly prospective

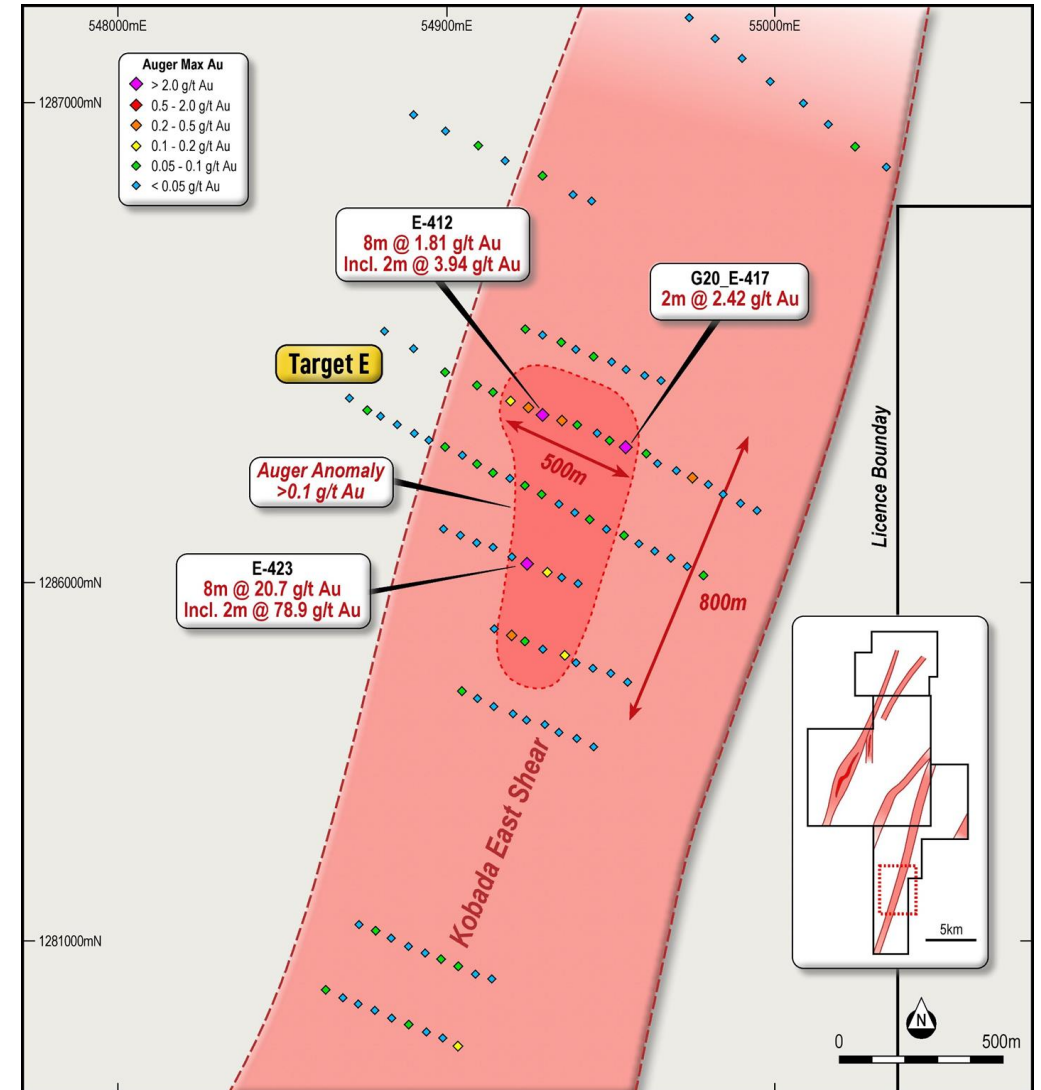
- Parallel shear to Kobada Shear Zone with many similar characteristics
- First drilled with RC in 2011, but no follow up until 2020
- Intersections include:
 - 36m at 1.64 g/t from 72m (KBRC11_140)
 - 3.1m at 4.25 g/t from 34.6m (G20_PH3A_20)
 - 3m at 2.59 g/t from 30m (KBRC11_144)
 - 5m at 1.90 g/t from 133m (KBRC11_142)
 - 12.5m at 1.15g/t from 39.0m (G20_PH3C_16)
- Artisanal workings coincide with best drill intersections
- Mineralisation open along strike and at depth
- 2023 drilling aims to test mineralisation along 2.5 km of strike



Target 2 – Kobada Est

Significant auger anomaly untested by drilling

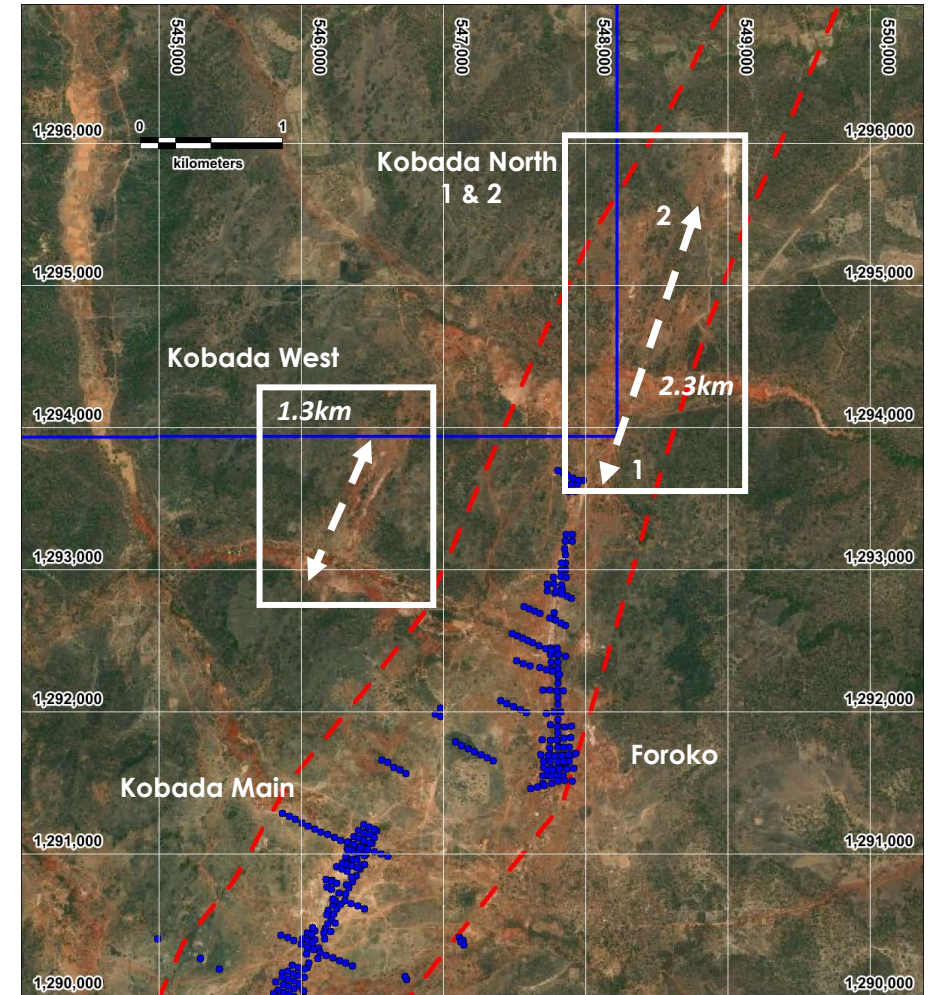
- Located on Kobada East Shear, another parallel structure to the Kobada and Gosso Shear
- Artisanal workings present along structure
- No previous drill testing, only shallow auger testing
- 2023 drilling targets best results from 2022 auger program:
 - 20.69 g/t over 8m from 2m (E-423)
 - Including 78.9 g/t over 2m
 - Including 3.14 g/t over 2m
 - 1.81 g/t over 8m from 10m (E-412)
 - Including 3.94 g/t over 2m
 - 2.42 g/t over 2m from surface (E-417)



Target 3 & 4 – Kobada North and Kobada West

Untested section of mineralized structure right next door

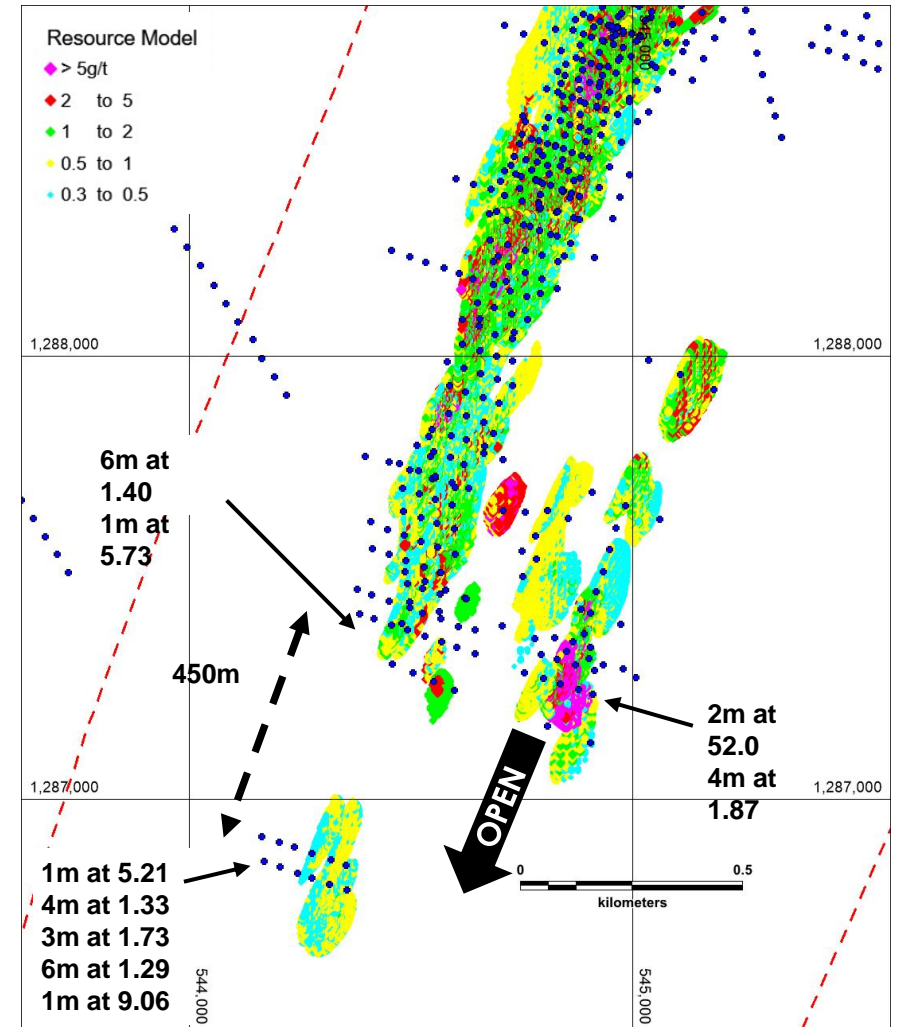
- Kobada North 1 and 2 targets lie directly on the Kobada Shear and cover 2.3km of strike north from the Kobada Main deposit
 - Limited drill testing at Kobada North 1
 - No drill testing at Kobada North 2
 - Extensive artisanal workings
- Kobada West refers to a series of artisanal workings parallel to the Kobada Shear
 - Only soil sampling carried out to date
 - No drill testing



Kobada South – Resource Extension Target

Infilling gaps in drilling to the south of the Kobada deposit

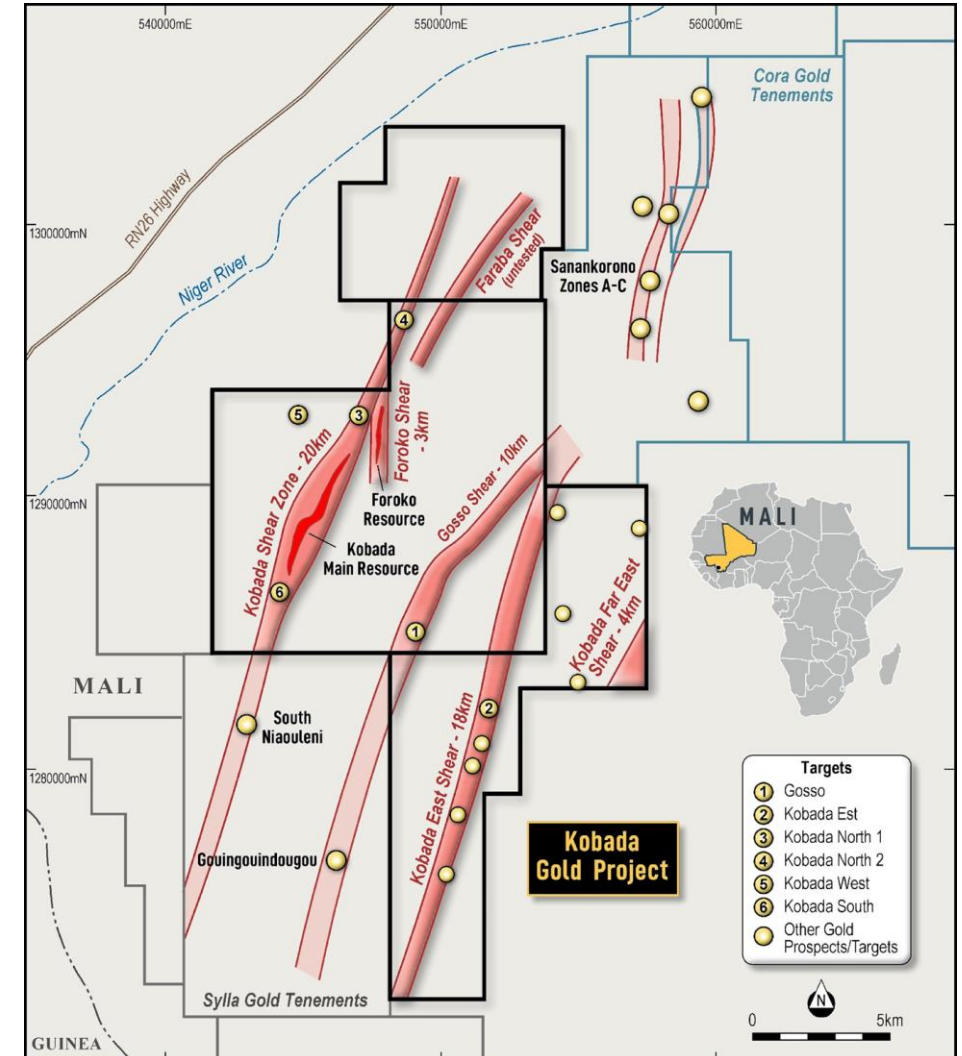
- Drilling aims to infill and extend resource at southern extremity of Kobada Main deposit
 - 450m gap in drilling
 - Mineralisation confirmed by drilling at southern end
- Geochemical anomaly continues south across the gap and further south along the Kobada shear
- Also tests extension to mineralisation in drilling on eastern side which is currently open to the south



Kobada a Central Part of a Much Larger System

Current exploration hotspot in southern Mali

- Kobada project overlies significant regional scale structures at the eastern margin of the Siguiri Basin
- These gold-bearing structures parallel those bounding the Yanfolila Belt, which is present in the eastern part of the project
- Over 50 km of strike (in aggregate) within the project area
- Prospectivity confirmed by over a decade of exploration by Toubani as well as recent results from neighbouring properties
- Current exploration hotspot with AIM, TSX and ASX explorers and developers active along the belt



2021 DFS – Low Technical Risk Base Case to Underpin Value

Permitted project to process an initial oxide ore phase with sulphide processing in later years

Low technical risk, long-life open pit project

- Proven & Probable Ore Reserves of 1.2Moz
- Oxide only production for Years 1-8 with sulphide production commencing in Year 9
- Average production of ~100koz p.a. for the first 10 years of operations
- Simple, shallow open pit operation at <3.5:1 LOM strip ratio
- Conventional 3.0Mtpa CIL processing with recoveries of ~96% in oxide and ~95% in fresh rock
- Years 1-10 head grade of 1.09 g/t vs LOM grade of 0.87 g/t

Robust project economics with low capital intensity

- NPV5 (pre-tax) of US\$506m with an IRR of 44.8% @ US\$1,750/oz
- NPV5 (post-tax) of US\$355m with an IRR of 37.6% @ US\$1,750/oz
- Initial capital cost of US\$167m with a short after-tax payback of 2.3 years

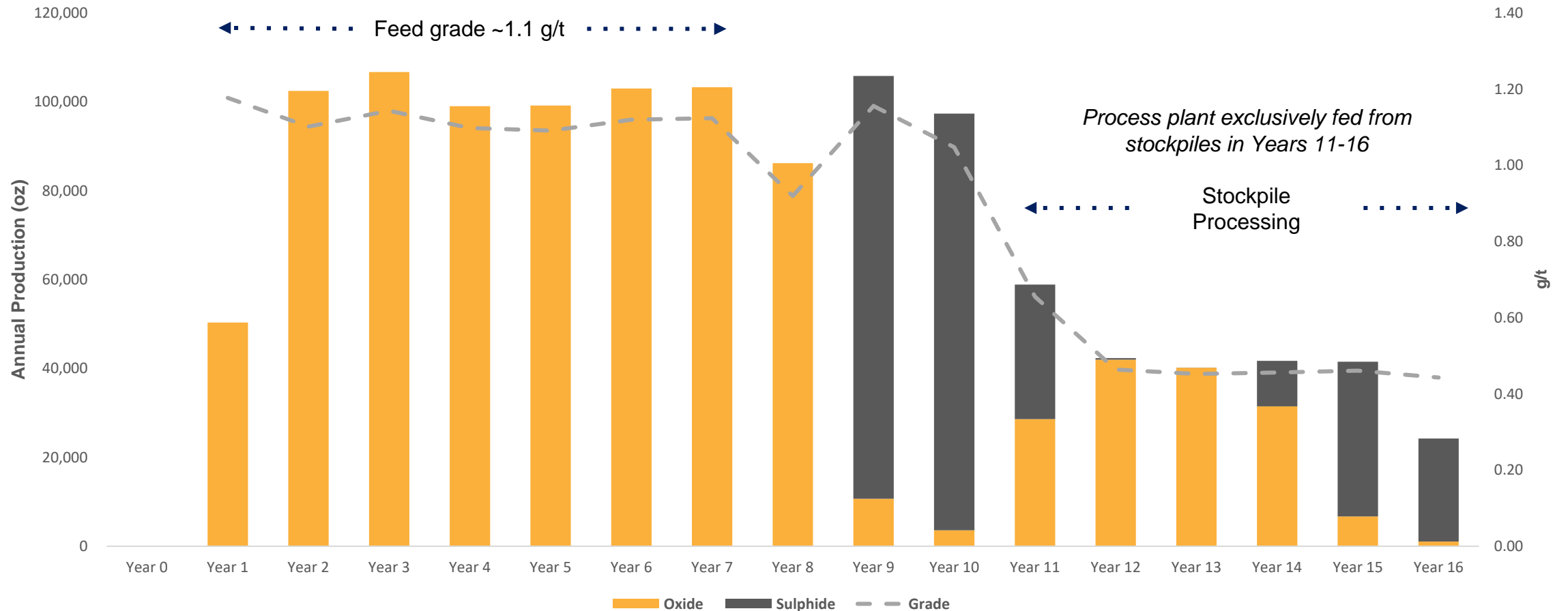
Project fully permitted

- Mining permit approved and valid to 2045
- Environmental and Social Impact Assessment (ESIA) permit approved (for initial oxide phase)

DFS PARTICULARS	
LOM Tonnage Processed (kt)	45,028
Year 1-10 Feed Grade Processed (g/t)	1.09
LOM Feed Grade Processed (g/t)	0.87
Strip Ratio	3.51
Mine Life (years)	15.6
Throughput (mtpa)	3.0
LOM Gold Recovery (%)	95.6
LOM Gold Production (Koz)	1,202
Year 1-10 Avg. Annual Production (Koz)	95.3
LOM Operating Costs (US\$/oz)	881
LOM AISC (US\$/oz)	972
NPV5 (US\$1,750/oz, post-tax) (US\$ mln)	355
IRR (post-tax) (%)	37.6
Initial Capital Cost (US\$ mln)	166
Sustaining Capital Cost (incl. sulphide plant) (US\$ mln)	127

DFS Production Schedule

First 10 years mill feed grade averages 1.1 g/t from primarily oxide sources



Multiple Levers to Optimise the 2021 DFS

Optionality exists to positively enhance Kobada through a targeted focus on oxide resource growth, optimising grade and deferring capital

- Current life-of-mine plan contemplates oxide ore feed for the first 8 years followed by a combination of oxide and sulphide run-of-mine, and stockpile feed from years 9 to 16
- While life-of-mine plans remains robust today, near-term levers exist to positively impact overall project economics by:
 - **Resource growth:** Increase shallow, near-surface oxide resources outside of the Kobada Main deposit
 - **Oxide conversion:** Target conversion of the 0.7Moz of oxide resources in the Kobada Main deposit currently outside Ore Reserves
 - **Increase throughput:** More oxide ore sources will support potential to increase oxide ore throughput and annual production
 - **Increase project life:** More oxide ore source would allow oxide life to be extended beyond 8 years and overall mine life beyond 16 years
 - **Optimise grade:** Growing overall mineral inventory results in greater flexibility to optimise grade, further improving project payback
 - **Defer sulphide capital:** Defer sulphide processing capital of US\$28.1 million and lower sustaining capital
 - **Lower costs:** Reduce life-of-mine AISC with lower softer ore processing costs and free-dig mining operations

Track Record of Successful Oxide Mining in West Africa

Several mines in the region commenced with a simple, low technical risk oxide operation

Deep weathering profile offers a simple, large open pit mining operation

- Softer oxide material begins from surface and extends in some areas of the pit to over 120m depth, is free-dig with no drill and blast required
- Consistent thicknesses allows for bulk material movement using large excavator and mobile fleet
- <3.5:1 LOM strip ratio, translates to overall lower unit mining costs
- Many significant mines in the region commenced with a successful oxide operation (e.g. Siguiri, Lefa, Sadiola and Syama)

Softer ore results in lower initial capital, processing and maintenance costs and potential increased throughput rates

- Kobada oxide ore is very soft, resulting in lower energy requirements for crushing and milling, and reduced maintenance costs
- Lower reagent and consumables consumption

Significant sulphide optionality in later years exists with 1.5Moz in sulphide Mineral Resources within the Kobada Main deposit and is open at depth

Toubani – Kobada – Mali



Anglogold – Siguiri – Guinea



Committed to Sustainable Development

At Toubani Resources, we are committed to creating value for our shareholders while operating in a safe, socially and environmentally responsible manner, contributing to the prosperity of our employees and our local communities while respecting human rights, cultures, customs and values of those impact by our activities.

Environment

We aim to minimize and mitigate impacts of our operations on the environment to maintain its viability and diversity.

Toubani has signed a strategic partnership with DRA Nexus and Senergy to build and install a hybrid power plant.

This will enable Toubani to reduce our environmental impact while ensuring reliable power supply.

Health & Safety

We aim to operate a safe and healthy workplace that is injury free and enhances the well-being of employees.

The Company has continued its ongoing work on drainage channels in the surrounding communities to prevent standing waters, which form breeding grounds for mosquitos that carry the malaria virus.

Social

We are committed to contribute to the social and economic development of local stakeholders.

Works on repairing the roads through Kobada village and repairing bridges has resulted in smooth passage along critical routes for goods and people. Toubani seeks to employ from the local communities to support its on-site activities.

Toubani maintains a proactive engagement with surrounding chief elders as part of its community relations and stakeholder engagements.



Bridge repair into Kobada village



Drainage channel construction around main village

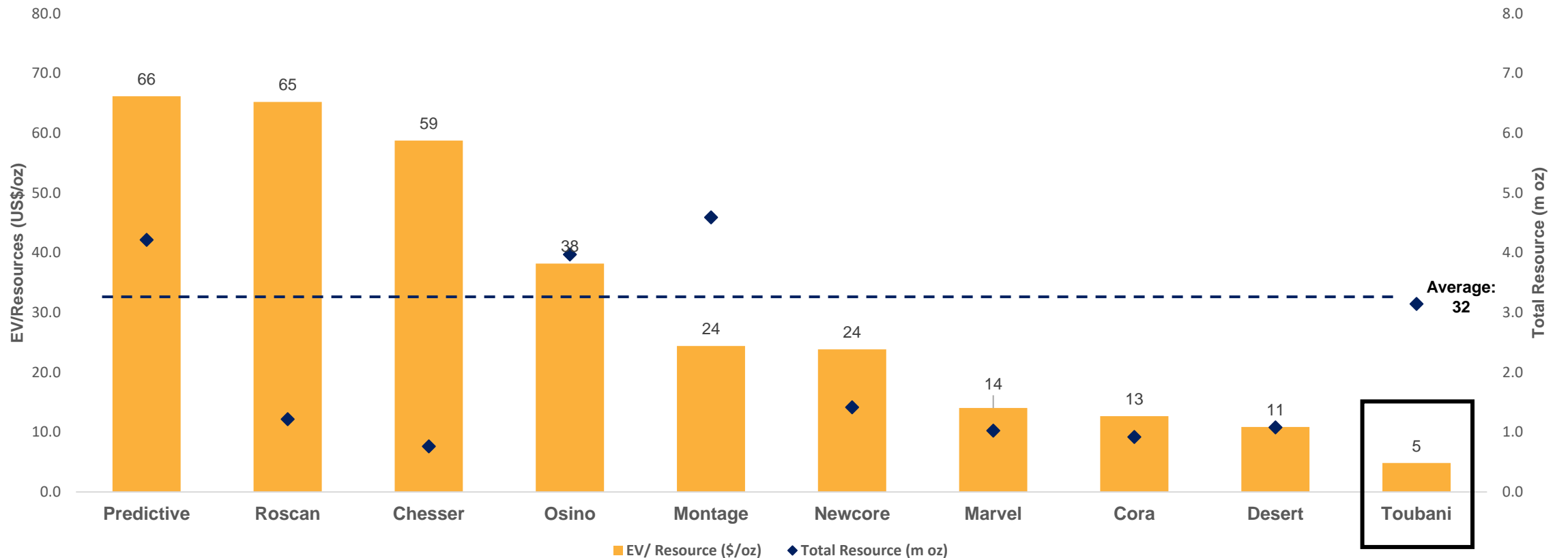


Kobada village bridge opening ceremony

Peer Benchmarking a Telling Investment Opportunity

Clearly undervalued relative to peers despite advanced development asset

EV/Resource trading comparables (US\$/oz) and total resource (Moz)^{1,2,3,4}



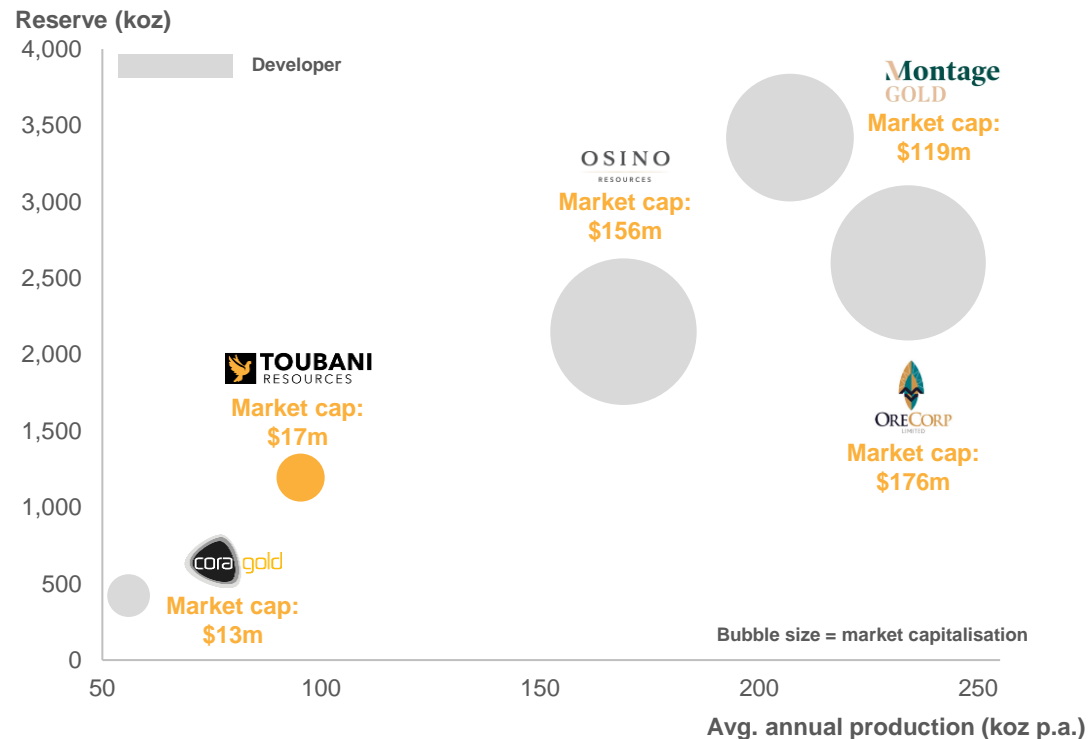
Source: S&P CapitalIQ, Company Reports, refer to slide 30

Notes: ¹ as at 17 January 2023; ² EV sourced from S&P CapitalIQ; ³ Resource figures ownership adjusted for multiple calculation; ⁴ Total resource on a 100% project basis.

West Africa an Active Region for Corporate Activity & Project Development

Simple, advanced assets to grow in attractiveness

Selected peer comparables^{1,2,3}



Selected West African transaction comparables since 2020⁴

Corporate actions validate large value potential for West African gold projects

Date	Type	Target	Acquirer	Reserve Moz	Resource Moz	Value US\$m	EV/ Reserve US\$/oz	EV/ Resource US\$/oz
2020	Project acquisition	Bogoso-Prestea	Future Global Resources	-	1.8	95	-	52
2021	Corporate takeover	Cardinal Resources	Shandong Gold	5.1	7.0	426	84	61
2021	Project acquisition	Kiaka	West African Resources	-	6.8	110	-	16
2022	Project acquisition	Boto/Diakha-Siribaya/Karita	Managem Group	1.4	4.1	282	201	69
2022	Corporate takeover	Orca Gold	Perseus	2.9	4.0	142	50	36
2022	Project acquisition	Chirano mine	Asante Gold	1.5	0.9	225	149	253
2022	Corporate takeover	Golden Star Resources	Chiefeng Jilong	1.0	10.6	470	-	44
2022	Project acquisition	Mankono	Montage Gold	-	0.4	22	-	56
2022	Corporate takeover	Oklo Resources	B2 Gold	-	0.7	56	-	81
Mean (Developer)							67	53
Mean (Producer)							50	116

Source: Company Reports; CapitalIQ, refer to slide 30

Notes: 1) Production figures include existing operations and prospective future production from development assets; 2) market cap figures as per 17 January 2023; 3) TRE data is shown for first 10 years of production 4) AUD/USD – 0.6918 (as of January 20, 2023), USD/CAD – 1.3421 (as of January 20, 2023)

Toubani's Investment Case

Experienced team in place to drive Kobada towards unlocking value for all stakeholders

Significant Valuation Re-Rate

Grow

- Targeting new oxide discoveries outside the Kobada Main deposit on structures previously untested or underexplored
- Convert the current 0.7Moz in oxide resources currently outside ORE

Optimise

- Target increased oxide resources to underpin >10 years oxide LOM
- Extend grade profile >1.0g/t for +10 years
- Increase throughput with softer oxide ore, increasing annual production profile
- Defer sulphide capital spend and reduce sustaining capital and operating costs

Develop

- Simple, low technical risk development project of significant scale
- West Africa is a highly active region with several projects being developed or acquired

US\$5/oz

Toubani EV/Resource multiple today

US\$32/oz

Peer avg EV/Resource multiple today

US\$53/oz

Acquisition multiple per EV/Resource last 2 years



ASX: TRE | TSX-V: TRE



Kobada Project

Mineral Resource Estimate 2021

Mineral Resource Classification	Tonnes Mt	Au g/t	Au Koz
Measured	21.40	0.83	572
Indicated	40.15	0.88	1,139
Measured and Indicated Total	61.54	0.86	1,711
Inferred Total	42.03	1.06	1,433

Notes:

1. A Mineral Resource cut-off grade of 0.35 g/t Au was applied.
2. A gold price of US\$1,800/oz was used for ultimate optimisation.
3. Columns might not add up due to rounding.
4. Mineral Resources are stated as inclusive of Mineral Reserves.
5. Mineral Resources are reported as total Mineral Resources and are not attributed.
6. Geological losses have been applied.

Kobada Project

Mineral Reserve Estimate 2021

Category	Material	Ore (kt)	Grade (g/t)	In Situ Ounces (Koz)
Proven	Laterite	336	0.77	8.4
	Saprolite	12,279	0.84	326.9
	Transition	1,777	0.83	46.8
	Sulphide	5,870	0.74	139.6
Subtotal		20,263	0.81	521.7
Probable	Laterite	1,296	0.88	36.7
	Saprolite	16,123	0.91	468.2
	Transition	1,979	0.90	56.6
	Sulphide	5,495	0.94	165.1
Subtotal		24,893	0.91	726.6
Total Proven and Probable	Laterite	1,633	0.85	45.1
	Saprolite	28,402	0.88	795.1
	Transition	3,756	0.87	103.4
	Sulphide	11,365	0.84	304.8
Total		45,139	0.87	1,248.4

Notes:

1. The effective date of the Mineral Reserve Estimate is July 28, 2021.
2. Mineral Reserves are reported in accordance with CIM guidelines.
3. A marginal cut-off of 0.35 g/t Au for all material is applied.
4. Mineral Reserves were estimated at a gold price of \$1,610 per oz and include modifying factors related to mining cost, and dilution and recovery, process recoveries and costs, G&A, and royalties.
5. Figures have been rounded to an appropriate level of precision for the reporting of Mineral Reserves.
6. Due to rounding, some columns or rows may not compute exactly as shown.
7. The Mineral Reserves are stated as dry tonnes processed at the crusher. All figures are in metric tonnes.
8. The in situ and recovered ounces are in troy ounces.

Reference Data

Company	Company Material Reference
Tietto Minerals	Press Release as of October 5, 2021
Orezone Gold	NI 43-101, effective date: June 26, 2019
Predictive Discovery	Press Release as of August 1, 2022
Roscan Gold	NI 43-101, effective date: March 31, 2022
Chesser Resources	Press Release as of December 12, 2022
Osino Resources	NI 43-101, effective date: September 6, 2022
Montage Gold	NI 43-101, effective date: February 14, 2022
Newcore Gold	NI 43-101, effective date: June 8, 2021
Marvel Gold	Press Release as of October 5, 2021
Cora Gold	Press Release as of November 21, 2022
Desert Gold Ventures	NI 43-101, effective date: January 12, 2022
Pasofino Gold	NI 43-101, effective date: June 13, 2022
Toubani	NI 43-101, effective date: September 29, 2021



ASX: TRE | TSX-V: TRE

