

# HIGHLY PROSPECTIVE WELLINGTON TENURE GRANTED

## HIGHLIGHTS

- **Wellington Base Metals Project** comprises five Exploration Licences covering an area of 1,134km<sup>2</sup> and is located 140km east of Wiluna in the Earaaheedy Basin in central WA
- Four licences have been granted with the final licence expected to be granted soon
- A desktop study by GBR in 2020 identified a large geochemical target in the Earaaheedy Basin similar to Rumble Resources' large-scale Zn-Pb discovery at Chinook
- Exploration by Rumble Resources and Strickland Metals has demonstrated the basin's potential to become a world-class Mississippi Valley-type (MVT) province
- Wide-spaced soil sampling program scheduled for late March

---

Great Boulder Resources ("**Great Boulder**" or the "**Company**") (ASX: **GBR**) is pleased to advise that four of the five Exploration Licence applications at its 100%-owned Wellington Base Metals Project ("**Wellington**") in the Earaaheedy Basin of Western Australia have now been granted.

### **Great Boulder's Managing Director, Andrew Paterson commented:**

*"We are excited to have these Wellington tenements granted. This process is testament to the relationship we have established with the people of the Tarlka Matuwa Piarku Aboriginal Corporation (TMPAC), and we look forward to collaborating with them as we commence exploration on the project."*

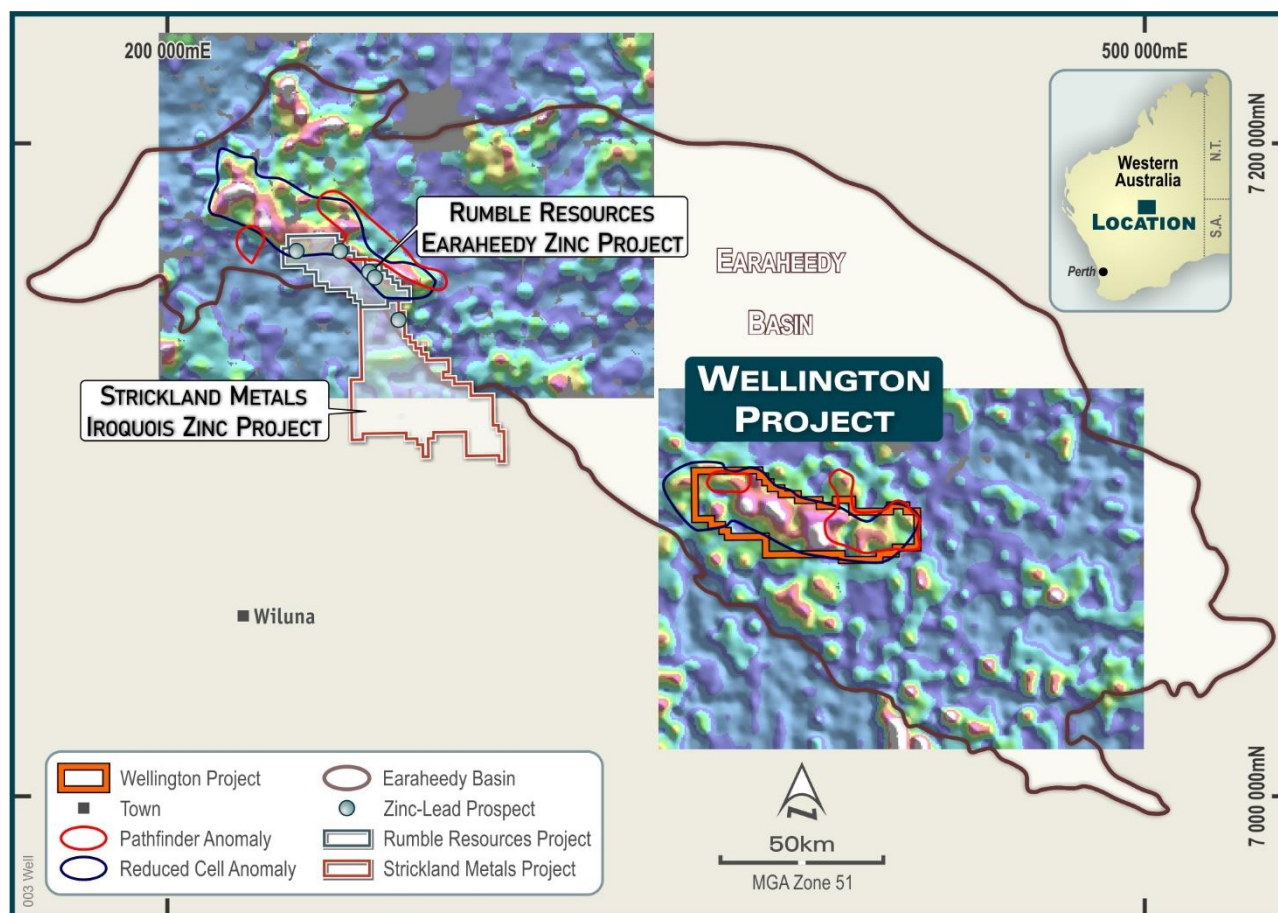
*"We expect the final tenement to be granted soon, giving us a total project area of 1,134km<sup>2</sup> in an area with world-class base metals potential."*

Exploration licences E53/2242, E53/2243, E38/3751 and E38/3752 were granted in late January and early February following completion of the mandatory Native Title objection period. As the Company has an Aboriginal Heritage and land access agreement with TMPAC there were no objections lodged. Great Boulder and TMPAC are now working with DMIRS to have the remaining tenement E38/3622 granted as soon as possible.

Great Boulder intends to commence exploration with a regional soil sampling program. Pending the availability of TMPAC heritage monitors, this is planned to commence in late March or early April.

Great Boulder's Wellington Zn-Pb project was initially identified as a large-scale geochemical pathfinder anomaly during desktop analysis of open-file Government soil sampling data. There has

been no previous Zn-Pb exploration in this area. Exploration by Rumble Resources Ltd (ASX:RTR) and Strickland Metals Ltd (ASX:STK) suggest the Earraheedy has potential to become a world-class base metals province.



**FIGURE 1: THE WELLINGTON PROJECT IS LOCATED IN THE EARRAHEEDY BASIN 140KM EAST OF WILUNA. BACKGROUND IMAGE IS PATHFINDER GEOCHEMISTRY.**

**This announcement has been approved by the Great Boulder Board.**

*For further information contact:*

**Andrew Paterson**  
*Managing Director*  
 Great Boulder Resources Limited  
[admin@greatboulder.com.au](mailto:admin@greatboulder.com.au)  
[www.greatboulder.com.au](http://www.greatboulder.com.au)

 [Follow GBR on LinkedIn](#)

#### **Media**

Lucas Robinson  
 Corporate Storytime  
 +61 408 228 889

[lucas@corporatestorytime.com](mailto:lucas@corporatestorytime.com)



[Follow GBR on Twitter](#)

## ABOUT GREAT BOULDER RESOURCES

Great Boulder is a mineral exploration company with a portfolio of highly prospective gold and base metals assets ranging from greenfields through to advanced exploration located in Western Australia. The Company's core focus is the Side Well Gold Project at Meekatharra in the Murchison gold field, where the Company has an Inferred Mineral Resource of 518,000oz Au. The Company is also progressing early-stage exploration at Wellington Base Metal Project located in an emerging MVT province. With a portfolio of highly prospective assets plus the backing of a strong technical team, the Company is well positioned for future success.

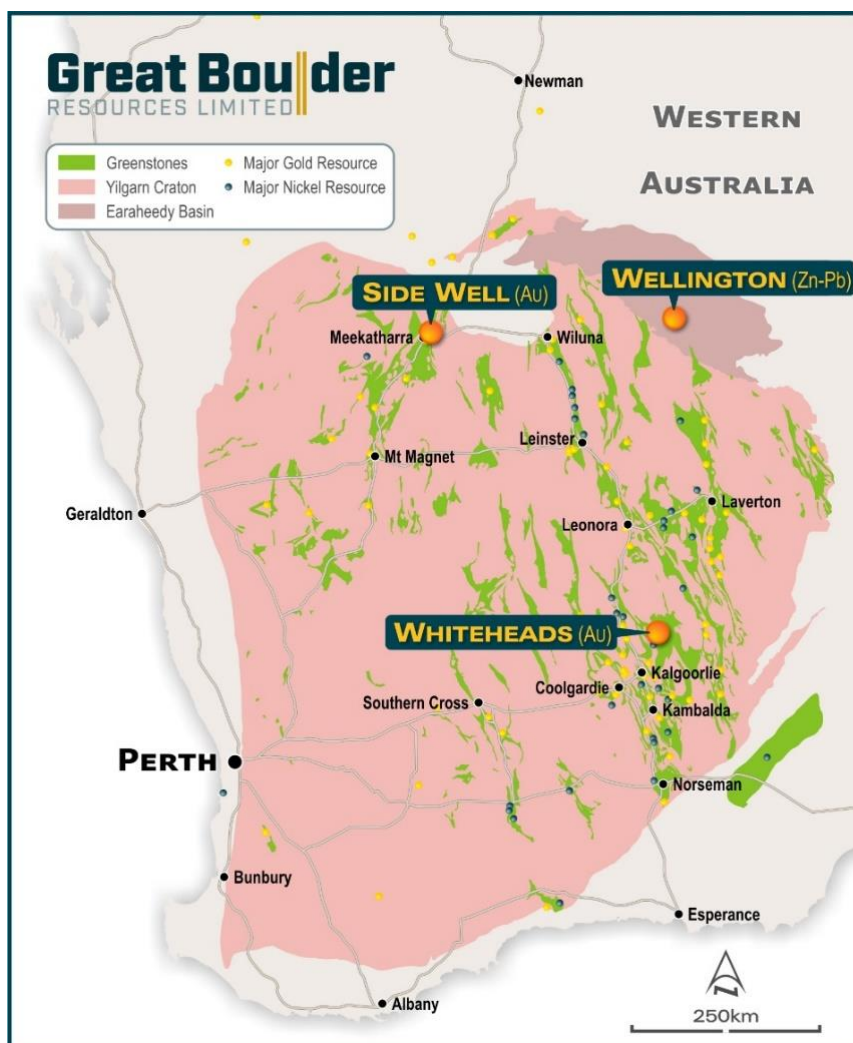


FIGURE 2: GREAT BOULDER'S PROJECTS