

ASX ANNOUNCEMENT

6 February 2023

LEADING EIA AND PERMIT CONSULTANT APPOINTED

South Harz Potash Limited (ASX:SHP) (**South Harz** or the **Company**) is pleased to announce that it has appointed ERM Consultants as both the Environmental Impact Assessment (EIA) consultant and Spatial Planning Permitting consultant for its 100%-owned Ohmgebirge Development in Thuringia, Germany.

The EIA is a key part of the permitting process for the Ohmgebirge mine and potash plant and integral to the Feasibility Study. The EIA baseline studies are set to commence immediately.

As a first step, the spatial planning procedure is essential to securing approval and general permission for the design of surface infrastructure. This then paves the way for the subsequent approval procedure of the main operating plan. The current Thuringian regional plan already declares potash mining in the Ohmgebirge region to be a generally reserved priority.

ERM is a leading global provider of environmental, health, safety, risk, social consulting, and sustainability related services. It has more than 7,000 people in over 38 countries and territories working out of 134 offices. ERM established its German Frankfurt office in 1989 and now employs over 230 people in Germany, with deep knowledge sector specialization in chemical, pharmaceutical, power, manufacturing, mining and finance.

South Harz Managing Director, Luis da Silva, commented:

"We are pleased to be working with ERM and to have such an experienced team partnering with the Company for this significant work. The German-speaking team at ERM's Frankfurt office will be able to liaise directly with the authorities and will support our Regional Director, Dr Babette Winter, in navigating the permitting process for our flagship Ohmgebirge Development."

This ASX release has been approved by Managing Director, Luis da Silva.

Investor and media enquiries

Luis da Silva
Managing Director
South Harz Potash Ltd
info@southharzpotash.com

Michael Vaughan
Fivemark Partners
+61 422 602 720
michael.vaughan@fivemark.com.au

Justine James / Matthew Young
Alma PR
+44 203 405 0205
shp@almapr.co.uk

CONTACT DETAILS

W: southharzpotash.com
E: info@southharzpotash.com
P: +61 (0) 408 447 493

ABN: 64 153 414 852

ASX Code: SHP

ASX Code (Options): SHPO

Frankfurt Code: A2DWXX

586.1M Ordinary Shares

61.6M Unlisted Options

46.2M Listed Options

About South Harz

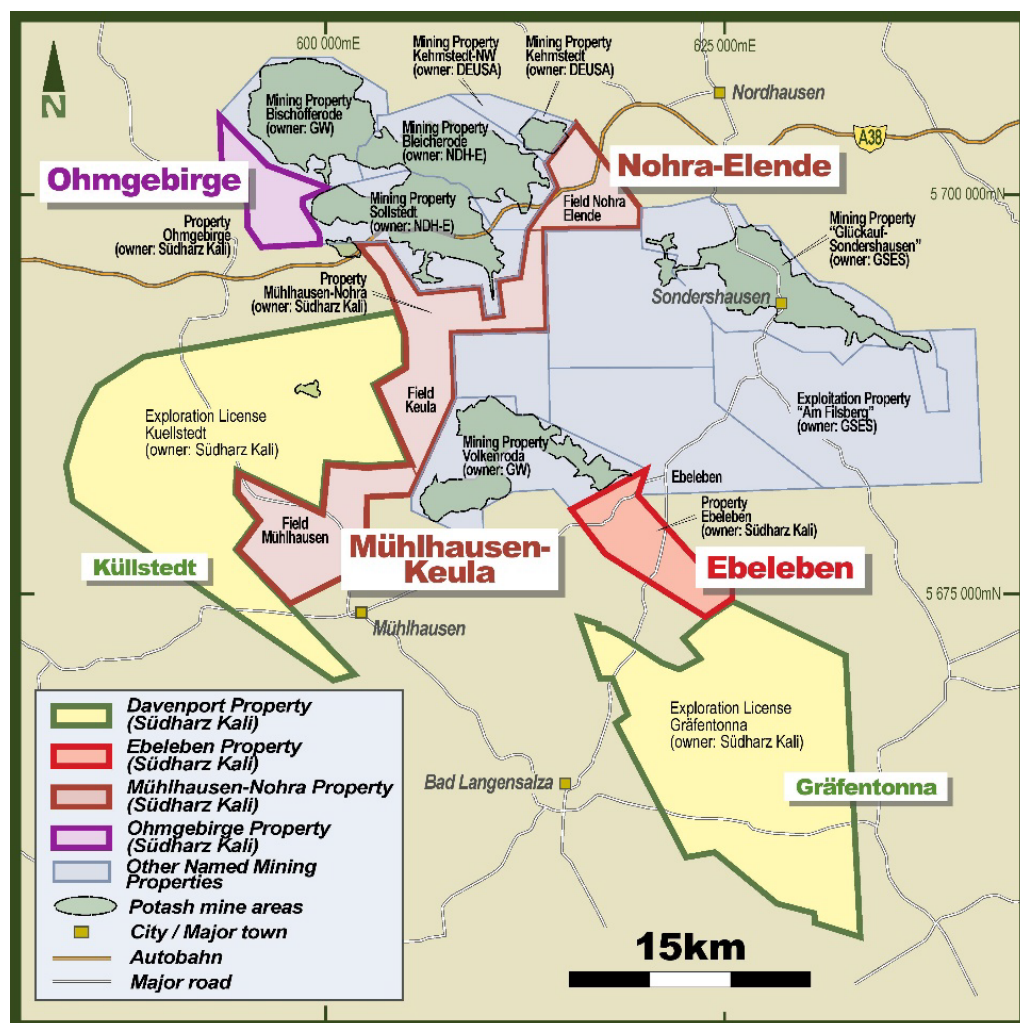
South Harz Potash (ASX: SHP) (**South Harz**) is a potash exploration and development company with its flagship project located in the South Harz Potash District region of Germany, midway between Frankfurt and Berlin.

The South Harz Project hosts a globally large-scale potash JORC (2012) Mineral Resource estimate of 5 billion tonnes at 10.6% K₂O of Inferred resources and 258 million tonnes at 13.5% K₂O of Indicated Resources across four wholly-owned project areas located favourably within central Europe.¹ This comprises three perpetual potash mining licences, Ohmgebirge, Ebeleben and Mühlhausen-Nohra, and two potash exploration licences, Küllstedt and Gräfentonna, covering a total area of approximately 659km².

With strong established infrastructure proximate to the key European market, the South Harz Project is well positioned to enable rapid economic development across multiple deposits.

South Harz Potash: Growing a responsible potash business in the heart of Germany

www.southharzpotash.com



1. Refer to South Harz ASX release dated 12 July 2022 for full Mineral Resource estimate details. In accordance with ASX Listing Rule 5.23, the Company is not aware of any new information or data that materially affects the information included in this release and the Company confirms that, to the best of its knowledge, all material assumptions and technical parameters underpinning the estimates in this release continue to apply and have not materially changed.

About ERM:

ERM is the largest global pure play sustainability consultancy, which partners with the world's leading organizations, creating innovative solutions to sustainability challenges and unlocking commercial opportunities that meet the needs of today while preserving opportunity for future generations.

ERM's diverse team of world-class experts support clients across the breadth of their organizations to operationalize sustainability, underpinned by their deep technical expertise in addressing their environmental, health, safety, risk and social issues. ERM calls this capability their "boots to boardroom" approach for its comprehensive service model that allows them to develop strategic and technical solutions that advance objectives on the ground or at the executive level.

www.erm.com

German office: [ERM Offices in Germany - Environmental Resources Management \(ERM\)](#)