



Exploring *Renewable Energy* Resources



Important Notice & Disclaimer

This presentation has been prepared by Narryer Metals Limited (Narryer or the Company) and contains background information about Narryer current as at the date of this presentation. The presentation is in summary form and does not purport to be all inclusive or complete. Recipients should conduct their own investigations and perform their own analysis in order to satisfy themselves as to the accuracy and completeness of the information, statements and opinions contained in this presentation.

This presentation is for information purposes only. Neither this presentation nor the information in it constitutes an offer, invitation, solicitation or recommendation in relation to the purchase or sale of shares in any jurisdiction. This presentation does not constitute investment advice and has been prepared without taking into account the recipients' investment objectives, financial circumstances or particular needs and the opinions and recommendations in this presentation are not intended to represent recommendations of particular investments to particular persons. Recipients should seek professional advice when deciding if an investment is appropriate.

To the fullest extent permitted by law, Narryer and its officers, employees, agents and advisers do not make any presentation or warranty, express or implied, as to the currency, accuracy, reliability or completeness of any information, statements, opinions, estimates, forecasts or other representations contained in this presentation. No responsibility for any errors or omissions from this presentation arising out of negligence or otherwise is accepted.

This presentation may include forward looking statements, Forward looking statements are only predictions and are subject to risks, uncertainties and assumptions which are outside the control of Narryer. Actual values, results or events may be materially different to those expressed or implied in this presentation. Given these uncertainties, recipients are cautioned not to place reliance on forward looking statements. Any forward looking statements in this presentation speak only at the date of issue of this presentation. Subject to any continuing obligations under any applicable law, Narryer does not undertake any obligation to update or revise any information or any of the forward looking statements in this presentation of any changes in events, conditions or circumstances on which any such forward looking statements is based.

Compliance Statement

The information in this presentation that relates to prior Exploration Results for the Narryer Project, Ceduna and Sturt Projects and the Rocky Gully Project is extracted from the following ASX Announcements lodged with ASX on 26 May 2022, 20 June 2022, 26 July 2022, 1 August 2022, 19 September 2022, 22 November 2022 and 7 February 2023, which are available on the Company's website www.narryer.com.au and the ASX website (ASX code: NYM). The Company confirms that it is not aware of any new information or data that materially affects the information included in the original market announcements and that all material assumptions and technical parameters underpinning the estimates in the market announcements continue to apply and have not materially changed. The Company confirm that form and context in which the Competent Person's findings are presented have not been materially modified from the original market announcements.

Competent Person Statement

The information in this announcement that relates to Exploration Results is based on information compiled by Dr Gavin England, a Competent Person who is a member of the Australian Institute of Mining and Metallurgy and the Australian Institute of Geosciences. Dr England is the Managing Director of Narryer Minerals Limited. Dr England declares in accordance with the transparency principles of the JORC Code that he has a personal financial interest in Narryer Mineral Limited. Dr England has sufficient experience that is relevant to the style of mineralisation and type of deposit under consideration and to the activity undertaken to qualify as a Competent Person as defined in the 2012 Edition of the Australian Code for Reporting of Exploration Results, Mineral Resources and Ore Reserves. Dr England has consented to the inclusion in this Public Report of the matters based on his information in the form and context in which it appears.

Why Narryer?

- ▶ Strategic ground, 100% owned for Ni-Cu-PGE and REE in both the Narryer Terrane (Western Australia) and Gawler Craton (South Australia)
- ▶ Drilling of Ni-Cu-PGE Targets completed at Narryer Project - assay results pending
- ▶ REE and scandium mineralisation identified at Ceduna Project, SA
- ▶ Rocky Gully clay-hosted REE project (WA) demonstrates high grade intersections. Scandium upside. Carbonatite present?
- ▶ Experienced Geology Team and Management
- ▶ Cash at end of last Quarter - \$2.3 million
- ▶ 47,550,001 shares on issue



Experienced Team



Richard Bevan
Non-Executive Chairman

- Extensive senior management experience, having been the Managing Director / CEO of a number of listed and unlisted companies
- Founding MD of nickel company, Cassini Resources
- Current Non-Executive Director of Empired (ASX:EPD), Killi Resources Ltd (ASX:KLI), TG Resources (ASX:TG6) and Cannon Resources (ASX:CNR)



Dr Gavin England
MD & Technical Director

- Geologist, 20+ years experience with senior positions in mineral exploration, project development and technical advisory roles
- Previous Ni-Cu-PGE experience as geologist for LionOre, Impact Minerals and Royal Resources
- Previous Non-Executive director for First Au (ASX:FAU) and founding Director of consulting company Clare Geological



Philip Warren
Non-Executive Director

- Chartered accountant and Managing Director of corporate advisory firm Grange Consulting Group
- 15+ years of corporate advisory experience specialising in financing, capital markets, and corporate governance
- Founding director of Cassini Resources
- Current Non-Executive Director of Anax Metals Ltd (ASX:ANX), Killi Resources Ltd (ASX: KLI) Rent.com.au (ASX:RNT) and Family Zone Cyber Safety (ASX:FZO)



Damon O'Meara
Non-Executive Director

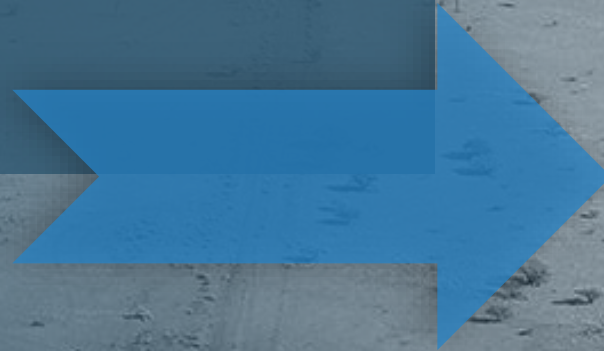
- Over 40 years experience in the mining industry, having worked for Denis O'Meara Prospecting and former ASX-Listed Miralga Mining NL
- Denis O'Meara Prospecting founders of Atlas Iron, Kalamazoo, De Grey Mining
- Co-founder of Outback Trees and MD of private exploration companies Great Sandy Pty Ltd and Mineral Edge Pty Ltd
- Non-Executive Director of First Au Limited (ASX:FAU), Octava Minerals Limited (ASX:OCT)



Jane Crawford
General Manager - Corporate

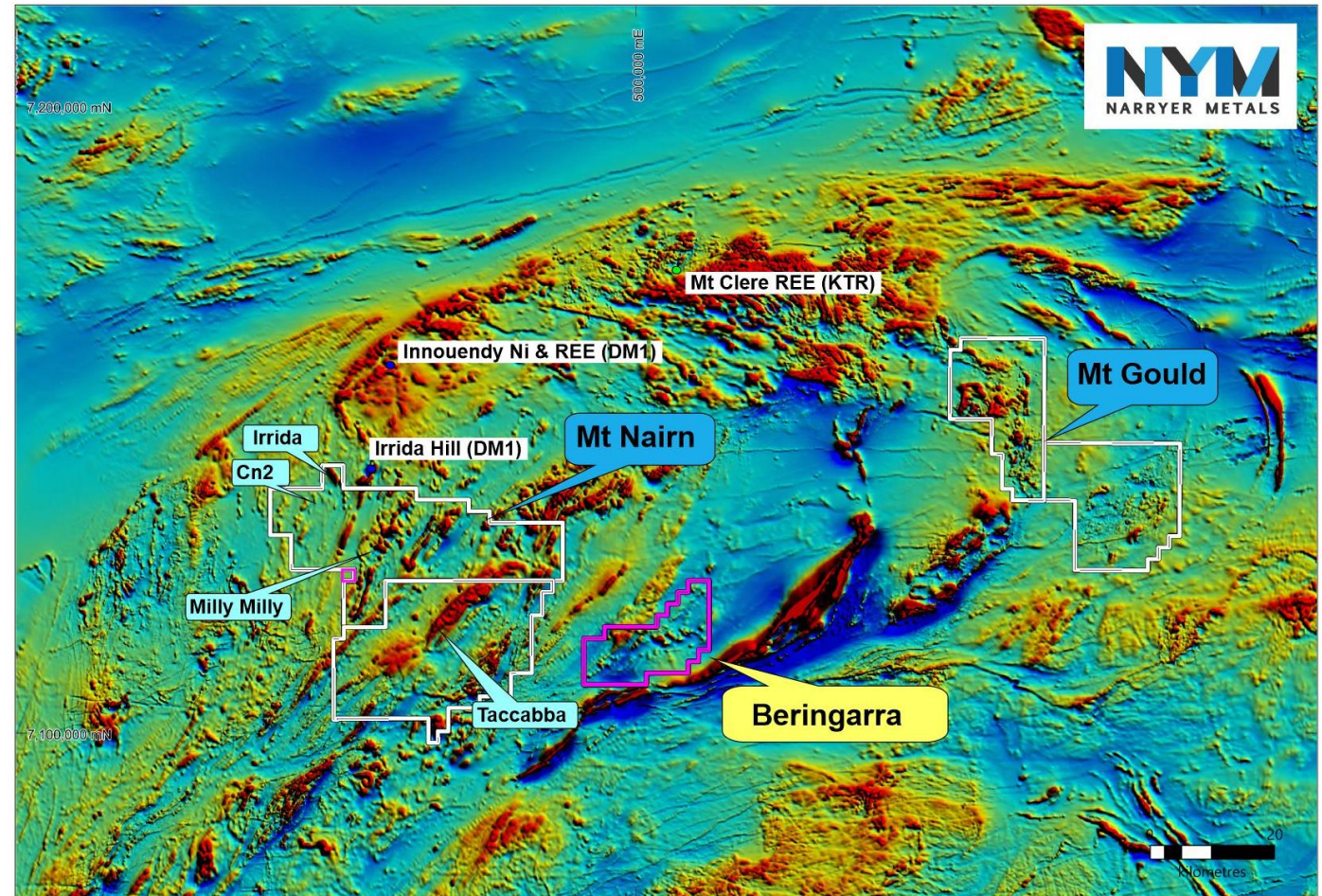
- 25+ years professional experience working in senior roles/consulting in corporate & project management, business development and strategy & corporate communications in the UK and WA
- Almost 20 years as founding director of private consulting firm with high-profile clients across a range of industry sectors
- Recent focus mining industry, many years consulting to Rio Tinto and private mining companies

Narryer Ni-Cu-Co-PGE and REE Project, WA



Location and Background

- ▶ Narryer Project covers >2000km² of tenure
- ▶ M-UM intrusives identified by previous explorers and the GSWA in Narryer Terrane, Yilgarn Craton
- ▶ Minimal modern Ni-Cu-PGE exploration
- ▶ Targeting chonolith-style **Ni-Cu-PGE** (e.g. Nova Bollinger, Savannah) and layered **PGE-Ni-Cu-(Cr)** mineralisation (e.g. Panton Sill)
- ▶ Airborne magnetic and radiometrics¹ and large EM² surveys completed 2022
- ▶ New Application at Beringarra



^{1, 2} NYM : ASX announcement 20 June 2022 and 4 May 2022

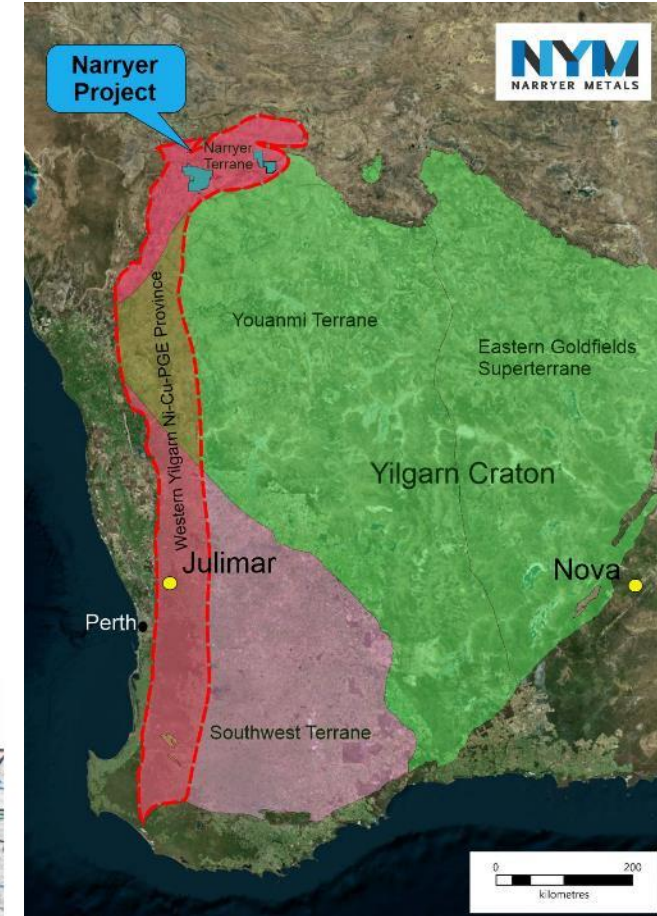
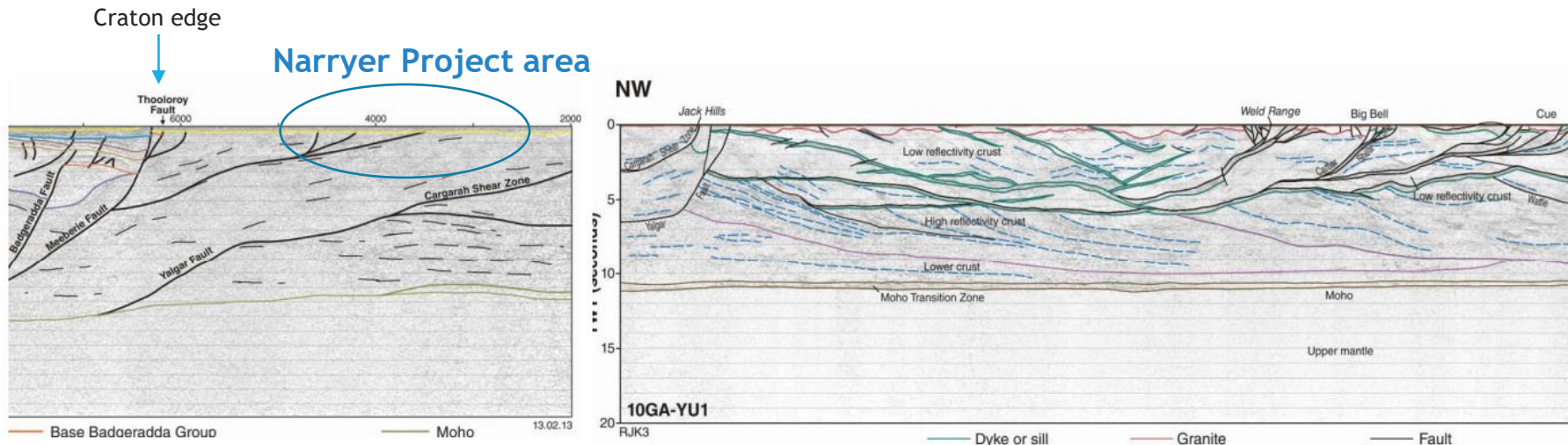
Prospective Terrane for intrusion related Ni-Cu-PGE Deposits

Exploration Criteria for magmatic Ni-Cu

- Large igneous province (LIP) near the edge of an ancient craton
- Near a major province boundary, connecting with deep penetrating faults
- Small to medium size mafic-ultramafic cumulate rocks in dykes, sills, chonoliths and plugs. Evidence of Ni-Cu sulphides
- Sulphur-bearing country rock

Positives for the Narryer Project area

- ✓
- ✓
- ✓
- ✓



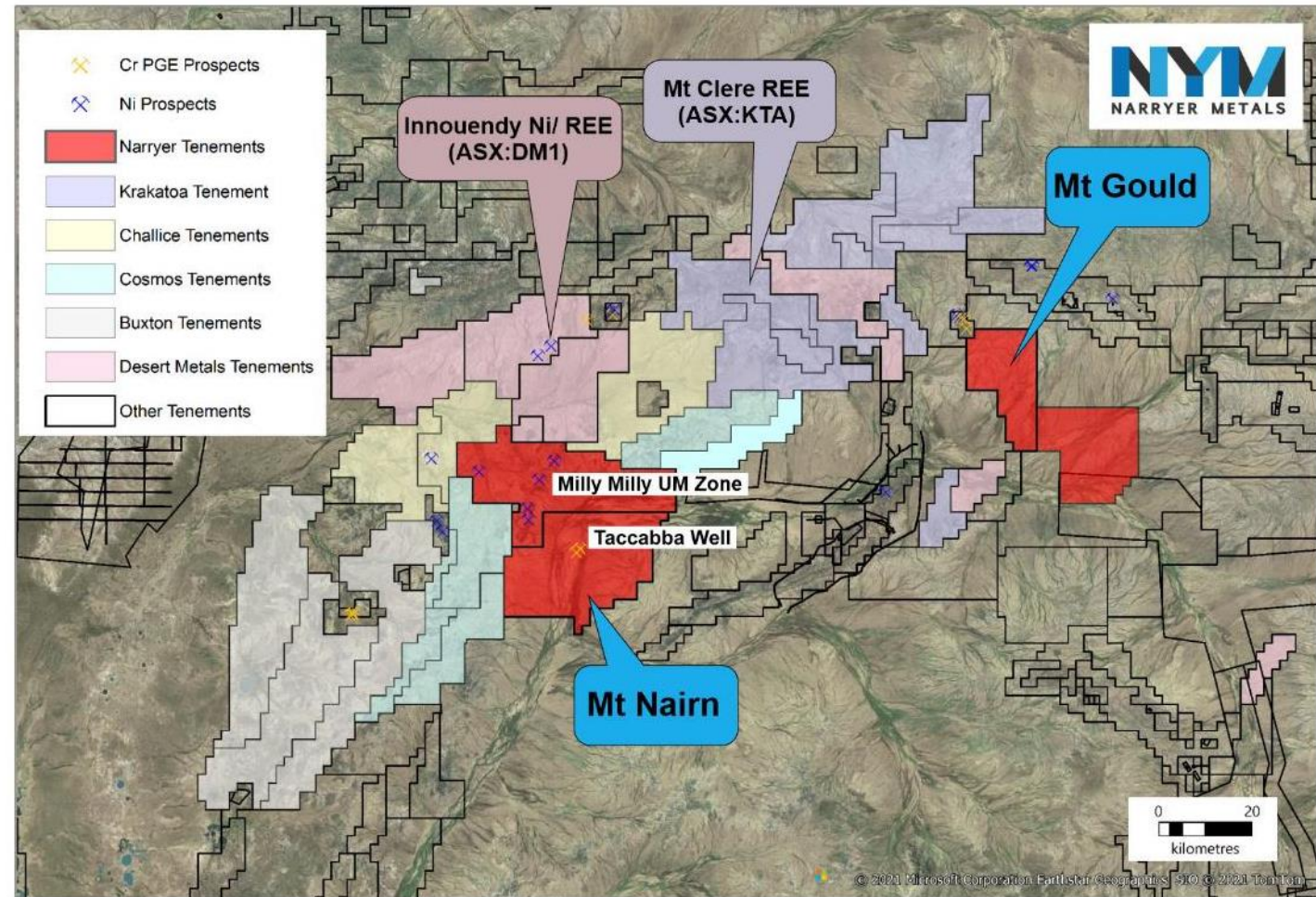
Narryer Project at the edge of Yilgarn Craton, in the Western Yilgarn Ni-Cu-PGE Province

W-E seismic section transecting the Narryer terrane, showing deep mantle tapping structures as a fluid pathway to project area

Exciting Terrane

- ▶ Chalice Mining (CHN) with surrounding tenure, recognising similar geological setting to Julimar¹
- ▶ Desert Minerals (DM1) Innouendy Prospect area shows evidence of Ni-PGE and ionic clay hosted REE mineralisation^{2,3,4}
- ▶ Krakatoa Resources (KTA) has made a major ionic clay-hosted REE discovery at Mt Clere, as well as exploration for Ni-Cu-PGE, with 20 new EM anomalies^{5,6}

A new Ni-Cu-PGE and REE exploration frontier in the Narryer Terrane



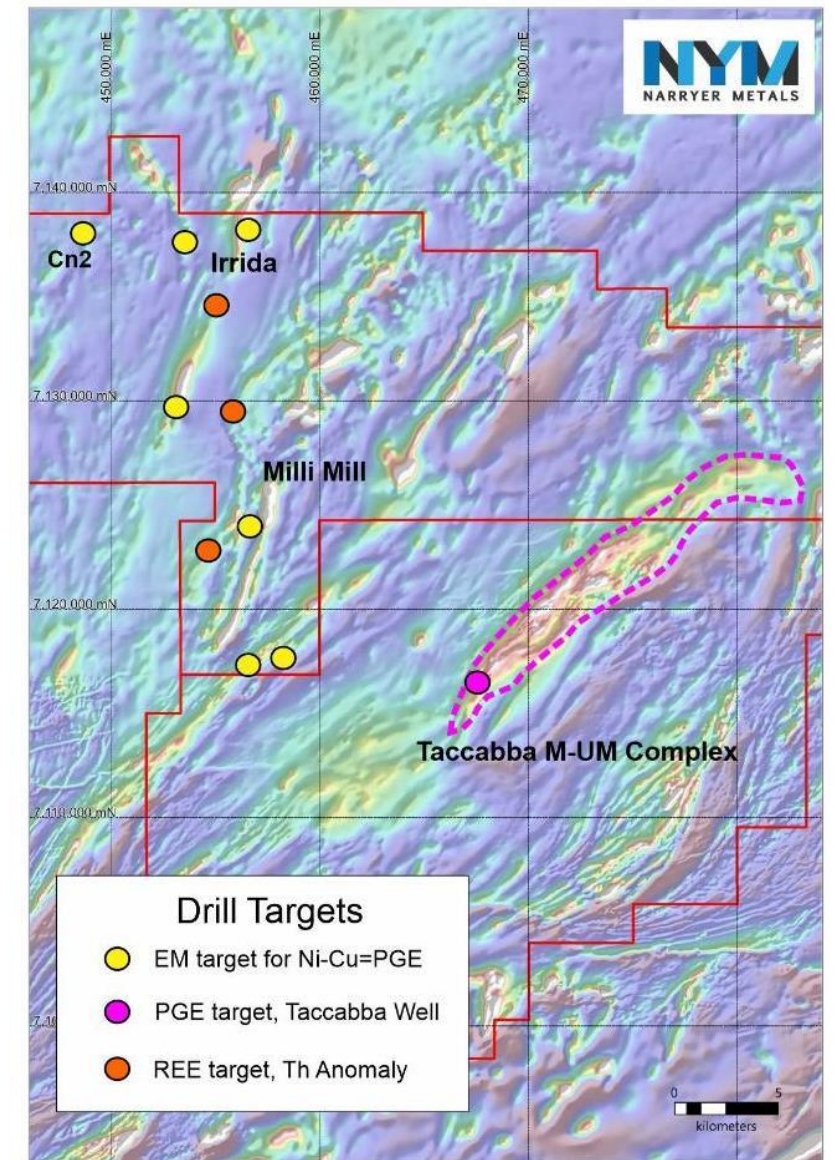
¹ ASX: CHN, announcement 7 July 2021, ^{2,3,4} ASX: DM1, announcements 19 April, 23 May and 16 Sept 2022, ^{5,6} ASX: KTA, announcement 10 March and 19 May 2022

Mt Nairn Ni-Cu-Co-REE Project, WA



Mt Nairn - Drilling

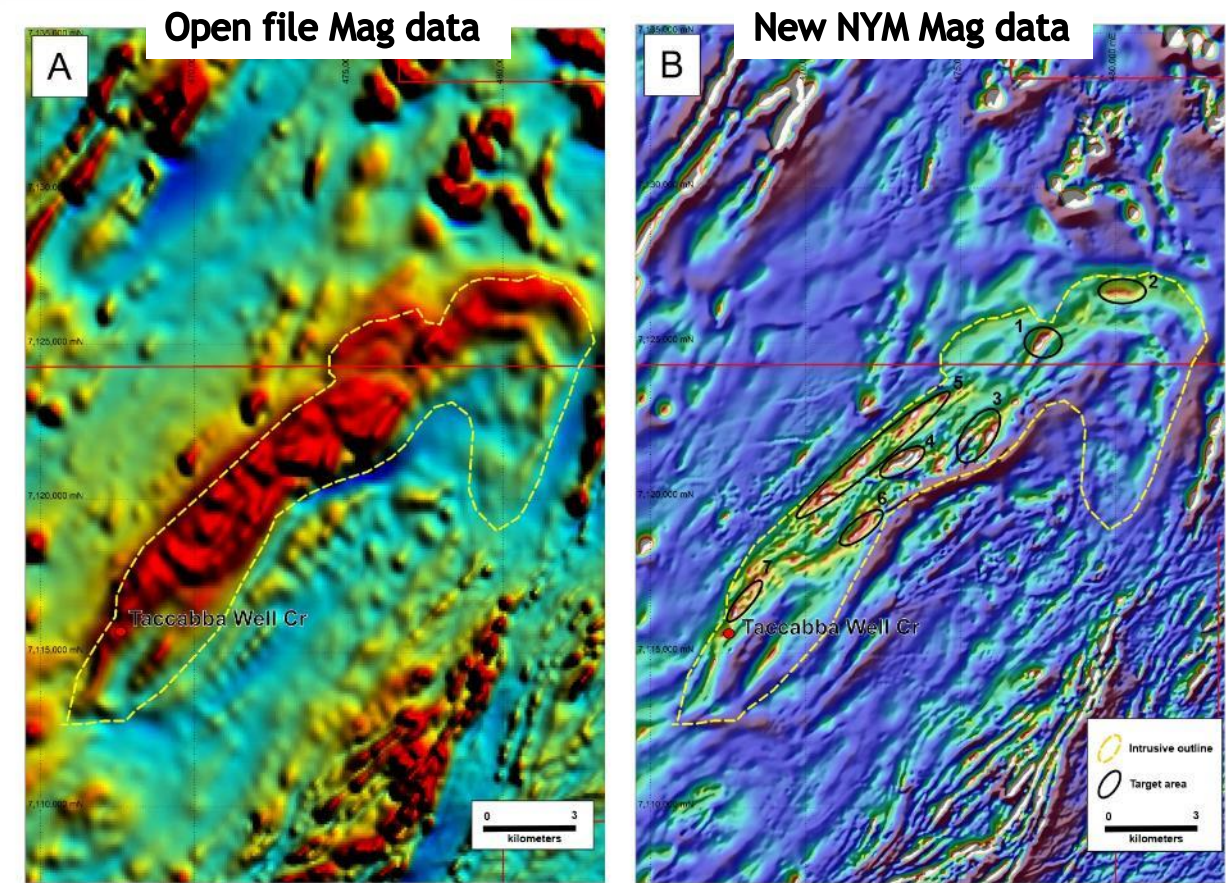
- ▶ Key Ni-Cu-PGE target area > 20km zone of M-UM intrusive rocks in outcrop and magnetics at Milly Milly and Irrida areas
- ▶ Cumulate UM observed, Rock chip assays up to 0.6% Ni¹
- ▶ ~ 3700m of RC drilling completed. Assays results in coming weeks
- ▶ Targets include -
 - ▶ 8 anomalies from High resolution Heliborne EM survey².
 - ▶ Geochemical targets - Ni-Cu-PGE and REE



^{1, 2} NYM : ASX announcement 12 April and 20 June 2022

Taccabba Well PGE Prospect Area

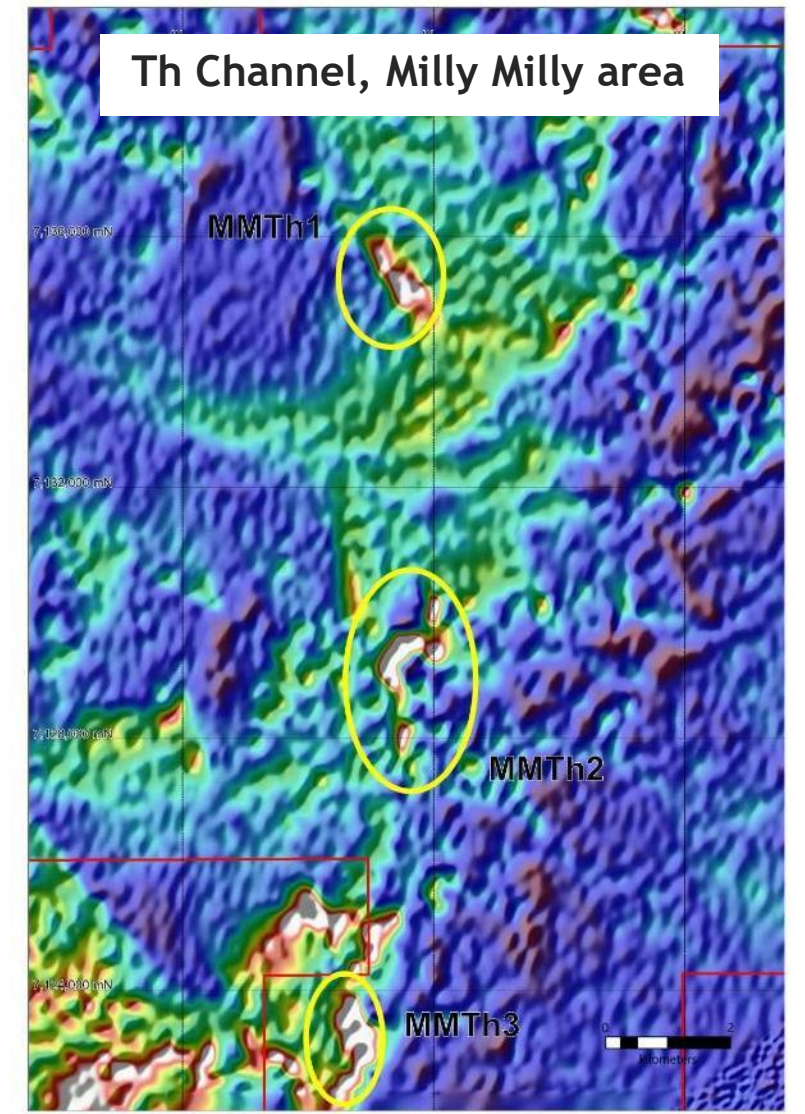
- ▶ Taccabba Well Prospect targets PGE associated with chromite-layering in layered Mafic Ultramafic complex (e.g. Panton Sill PGE deposit, Future Metals)
- ▶ Newly discovered layered Intrusive ~ 25km strike length, mostly under cover
- ▶ Chromite bands (up to 3% Cr) identified from previous drilling (Pacimex, 1973). Limited exploration since
- ▶ No PGE in previous assaying in early drilling
- ▶ Disseminated Cu sulphide observed in core
- ▶ Drilling of chromite bands now completed. Assays pending in weeks
- ▶ NYM flew High Resolution magnetics¹, now identifies new targets area to follow with aircore drilling.




¹ NYM : ASX announcement 26 July 2022

REE at Mt Nairn

- ▶ Narryer Terrane new frontier for ionic clay REE
- ▶ Mt Nairn has similar geology to Innouendy¹ (Desert Metals) and Mt Clere² (Krakatoa Resources) Discoveries
- ▶ Th anomalies related to weathered leucocratic gneisses at Milly Milly Prospect area, similar to Innouendy and Mt Clere
- ▶ Stream sediment program results in coming weeks



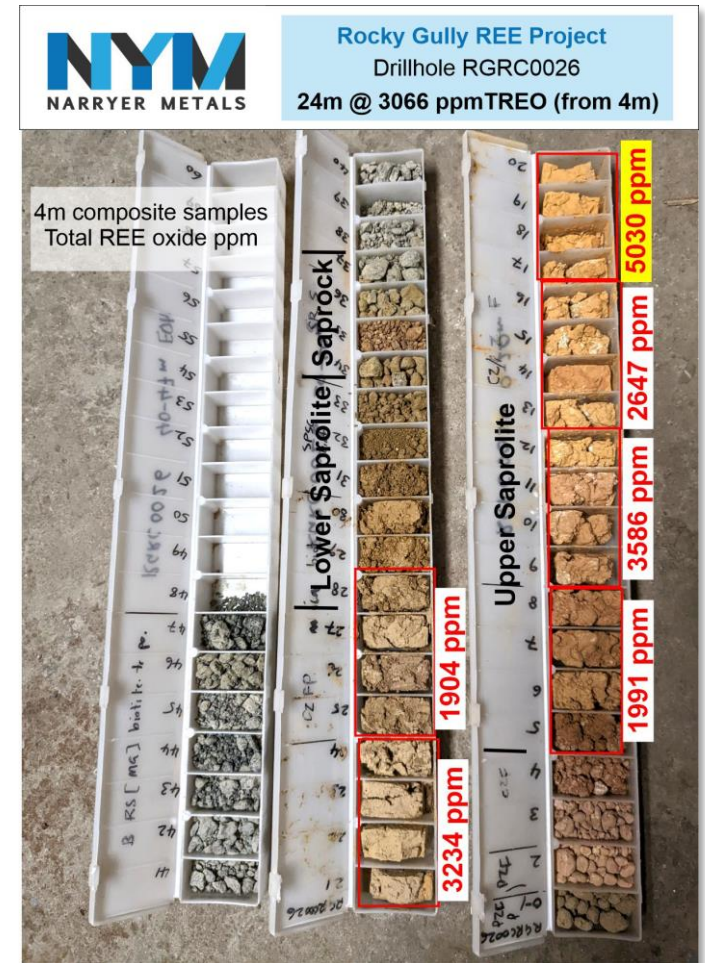
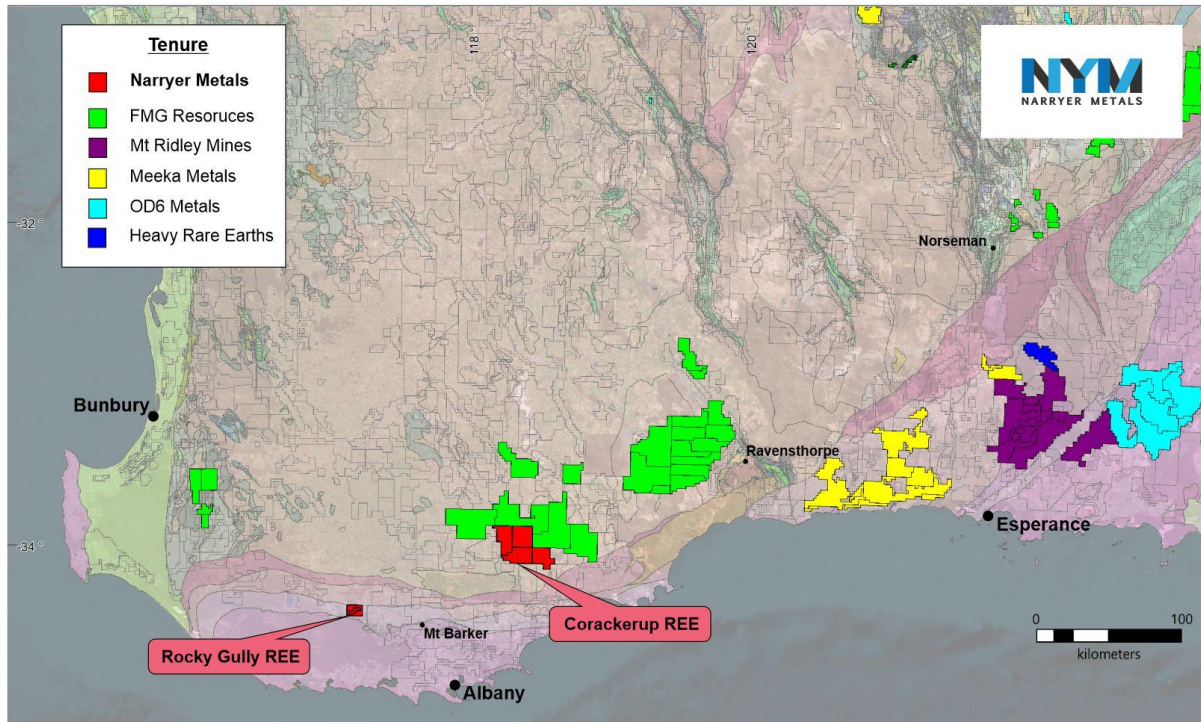
¹ ASX: DM1, announcements 16 Sept 2022, ² ASX: KTA, announcement 19 May 2022



Rocky Gully REE Project, WA with Ni-Cu-Co mineralisation potential

Significant REE Project, WA

- ▶ Narryer entered an option agreement to acquire REE project at Rocky Gully, Western Australia¹
 - ▶ Targeting clay hosted REE and Scandium - mineralogy and metallurgy underway
 - ▶ Carbonatite Hosted REE - new focus
- ▶ 80km NW from Albany, located along the Albany Frazer Belt



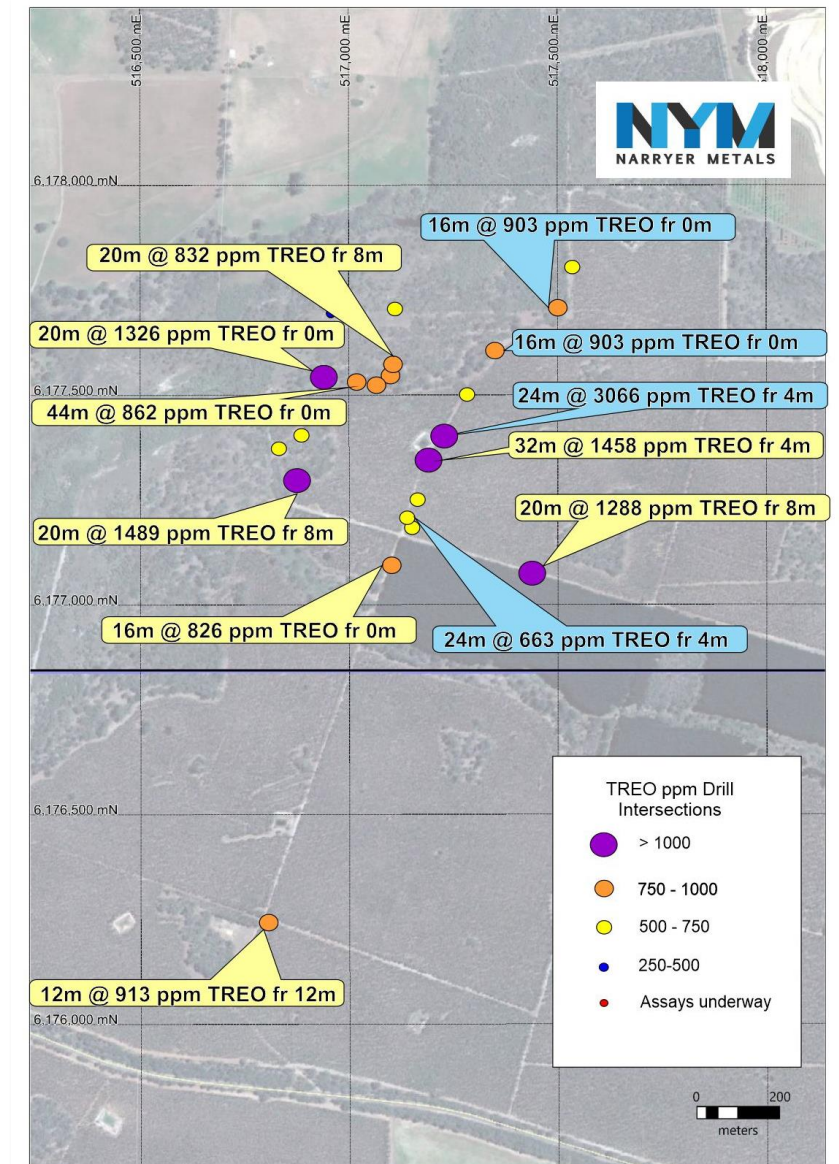
¹ NYM ASX Announcement 19 September 2022

Clay-Hosted REE / Scandium

- ▶ Significant REE (> 5000 ppm TREO) and Scandium (> 500 ppm Sc₂O₃) mineralisation identified in saprolite from multiple drilling intersects over ~ 1.5km strike, ~ 30m average thickness
- ▶ Mineralised intervals are rich in “high value” magnet suite of REE oxides (MREO - Pr₆O₁₁, Nd₂O₃, Tb₄O₂, Dy₂O₃), with maximum assays of 1648 ppm²
- ▶ High Scandium, valuable by-product

Best intersects -

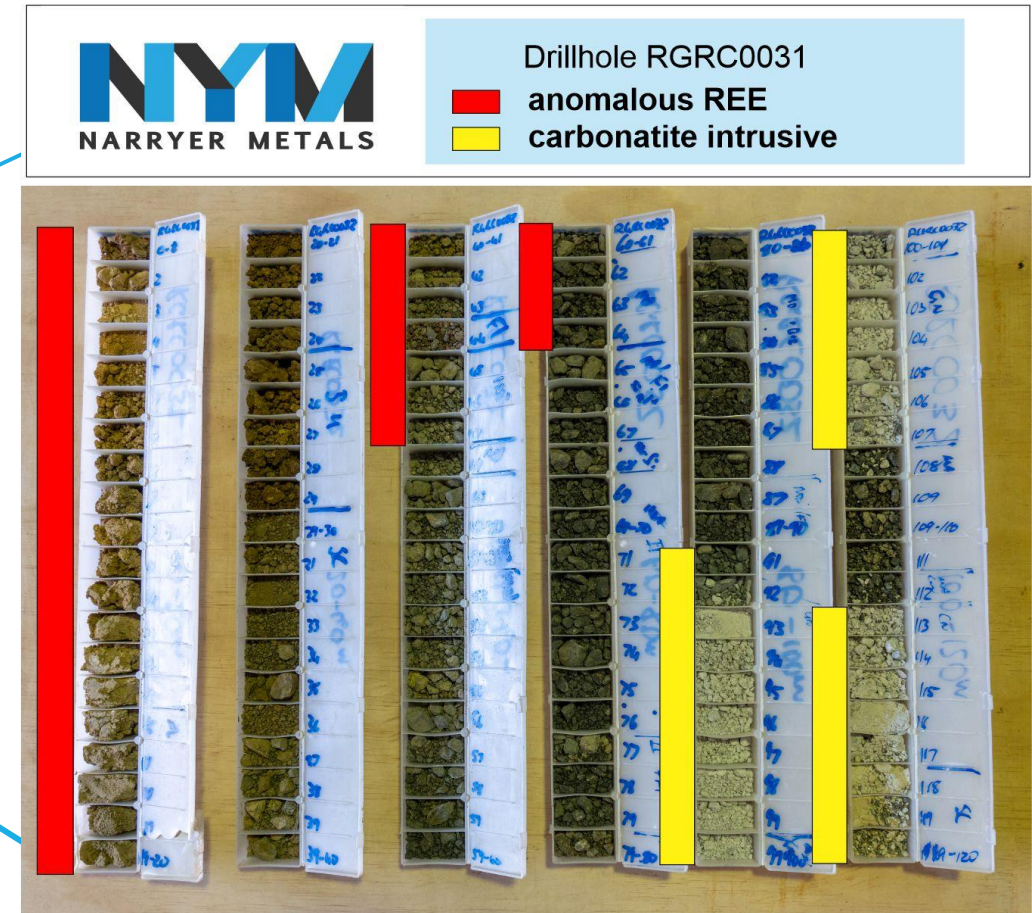
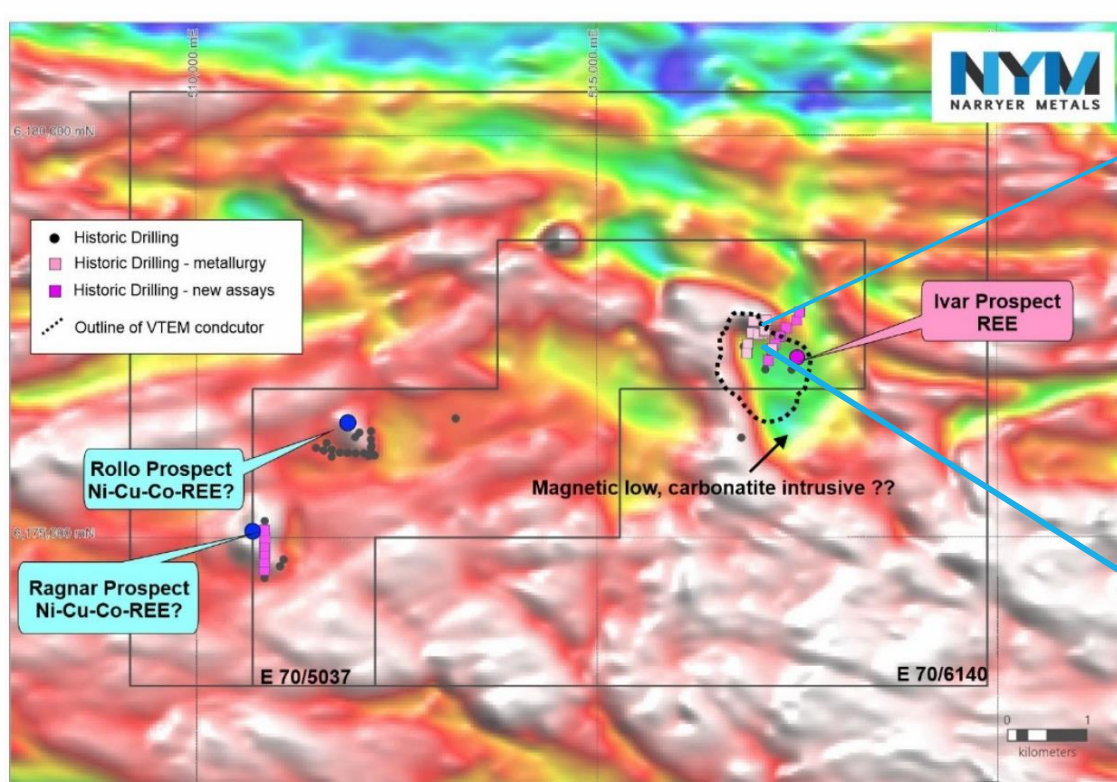
- 32m @ 1458 ppm TREO , 350 ppm MREO from 4m, including 4m @ 3165 ppm TREO, 717 ppm MREO from 16m (drillhole RGRC0037)¹
- 24m @ 3066 ppm TREO, 877 ppm MREO, 337 ppm Sc₂O₃ from 4m (drillhole RGRC0026)², including -
 - 4m @ 5030 ppm TREO, 1648 ppm MREO from 16m
 - 8 m @ 546 ppm Sc₂O₃ from 4m



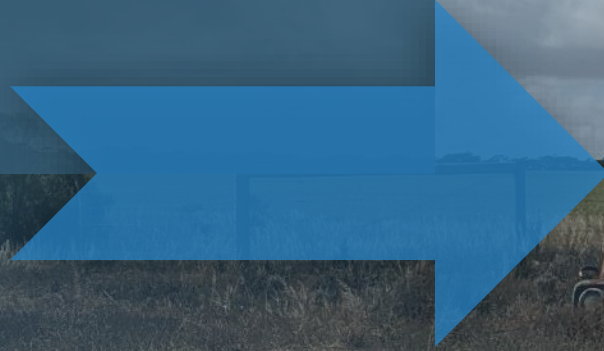
¹ NYM ASX Announcement 19 September 2022; ² NYM ASX Announcement 22 November 2022

Rocky Gully REE Carbonatite

- ▶ Investigation underway on high value, carbonatite hosted mineralisation - major source for REE and Nb
- ▶ Previous drilling identified carbonatite intrusive and assoc. alteration
- ▶ Possible source for REE in the surrounding and regolith
- ▶ Geophysical modelling underway, to produce drill targets

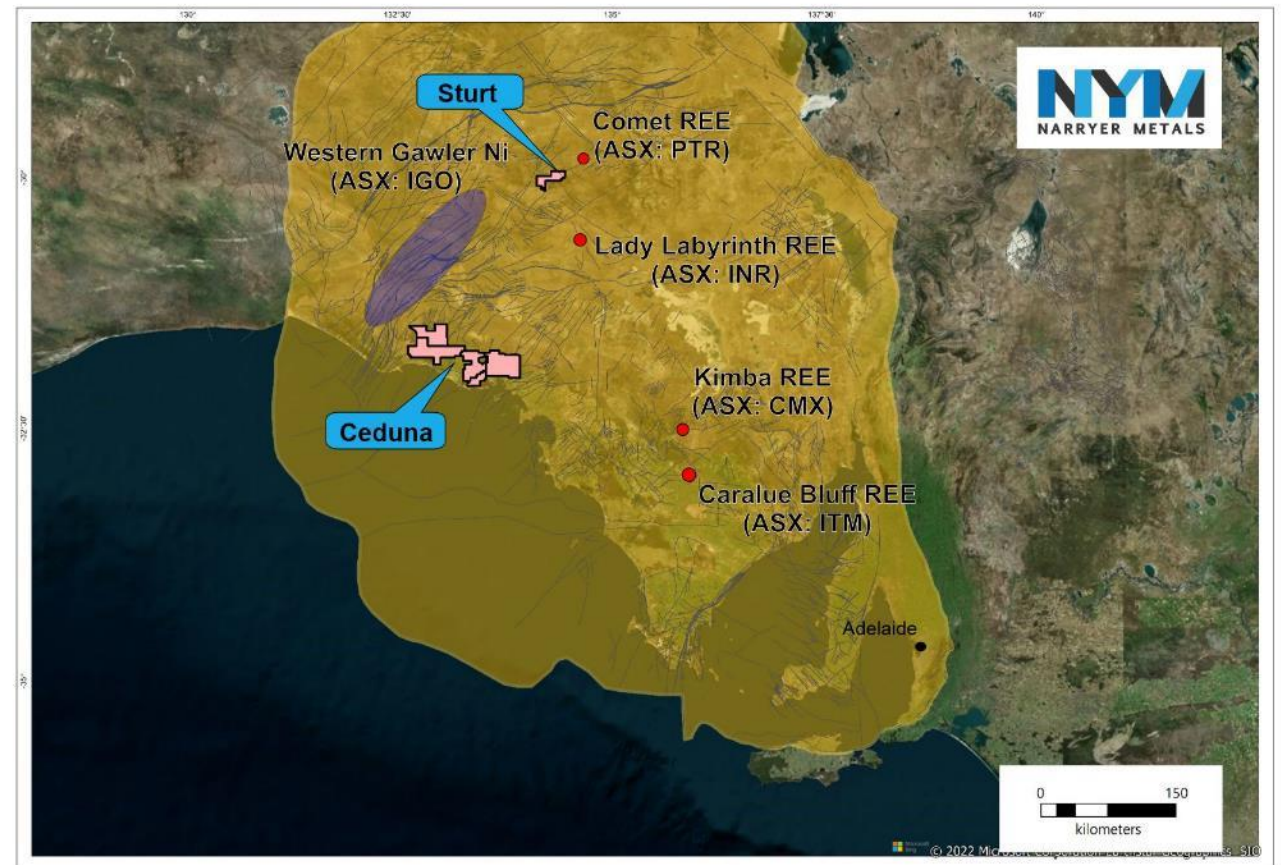


Sturt and Ceduna Ni-Cu-Co-PGE-REE Projects, SA



Ceduna & Sturt, SA Ni-Cu-Co-PGE-REE

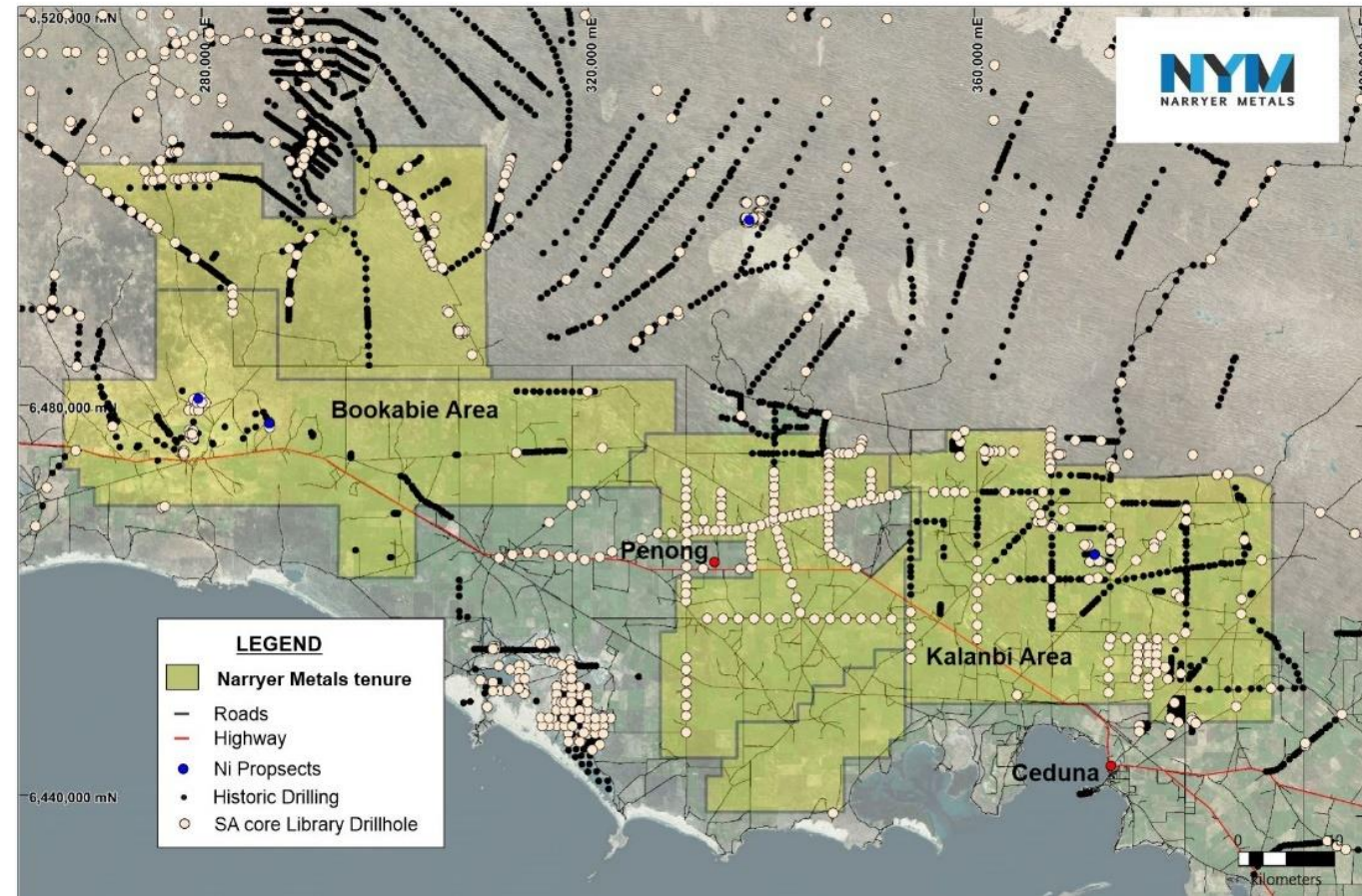
- ▶ Two areas targeting magmatic hosted Ni-Cu-Co-PGE and Ionic Clay REE mineralisation in Gawler Craton, South Australia
- ▶ M-UM intrusive sited along major tectonic structures
- ▶ Previous exploration of NYM ground identifies anomalous Ni sulphides and PGE's which remain inadequately test¹.
- ▶ IGO (Western Areas) identifies West Gawler as major Ni play
- ▶ Recent exploration of Gawler Craton shows REE discovery in similar geological setting to NYM
 - ▶ Comet discovery of Petrathem (ASX:PTR)
 - ▶ Lake Labyrinth discovery of Indiana Resources (ASX:IDA)
 - ▶ Caralue Bluff of Itech Minerals (ASX:ITM)
 - ▶ Kimba Prospect of Chemx Materials (ASX:CMX)



¹ NYM : ASX announcement 12 April 2022

Ceduna, SA Ni-Cu-Co-PGE-REE

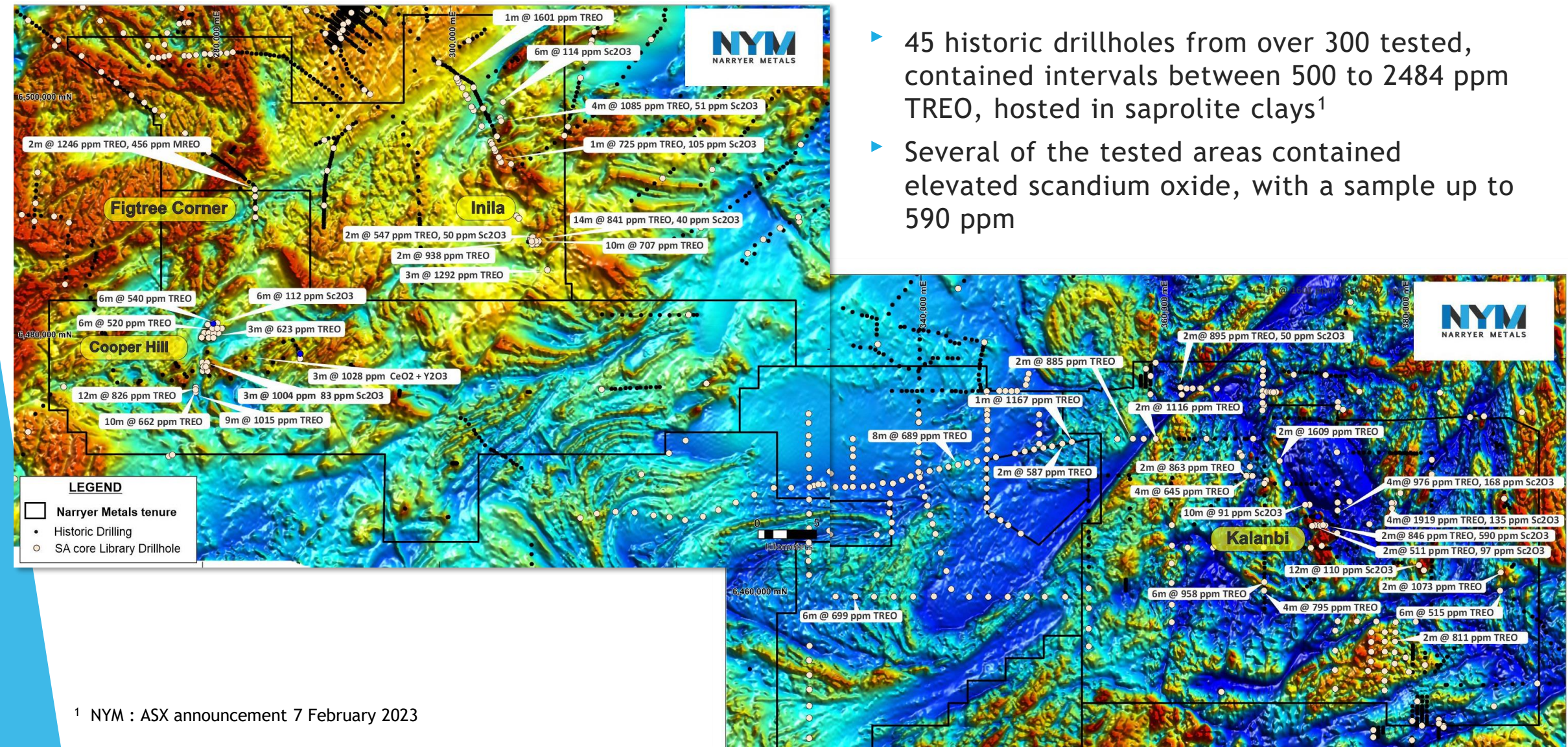
- ▶ ~3,200km² of prospective tenure
- ▶ Near existing infrastructure
- ▶ M-UM intrusive sited along major tectonic structures
- ▶ Eight key Ni-Cu-PGE targets
- ▶ Cooper Hill a priority PGE target, with PGE mineralisation in gabbro's identified in previous RAB drilling - ¹
 - 20 m @ 103 ppb Pt+Pd (from 21m, CHAC027)
 - 6 m @ 260 ppb Pt+Pd, 0.4 % Ni (from 30m, CHAC028)
- ▶ Testing of historical drill hole samples stored at SA State Core Library from the Ceduna Project identifies a rare earth (REE) + scandium-rich mineralised system²
- ▶ Key targets identified for aircore drilling in 2023



¹ NYM : ASX announcement 12 April 2022 and 7 February 2023

Ceduna, SA Ni-Cu-Co-PGE-REE

- ▶ 45 historic drillholes from over 300 tested, contained intervals between 500 to 2484 ppm TREO, hosted in saprolite clays¹
- ▶ Several of the tested areas contained elevated scandium oxide, with a sample up to 590 ppm



¹ NYM : ASX announcement 7 February 2023

Six Month Catalysts to Drive Shareholder Value



UNDERWAY



Drilling of EM targets at Mt Nairn completed
Results pending



UNDERWAY



Taccabba Well chromite bands for PGEs drilling complete
Results pending



UNDERWAY



Mapping/rock chip sampling of new identified M-UM complex at Taccabba Well ongoing
EM planned; RAB planned first half 2023



UNDERWAY



Ceduna testing of >300 historic drillholes for REE - lab assays show mineralisation



UNDERWAY



Rocky Gully metallurgy - results Feb 2023
Planning of aircore drill program Q2, 2023



ON TRACK



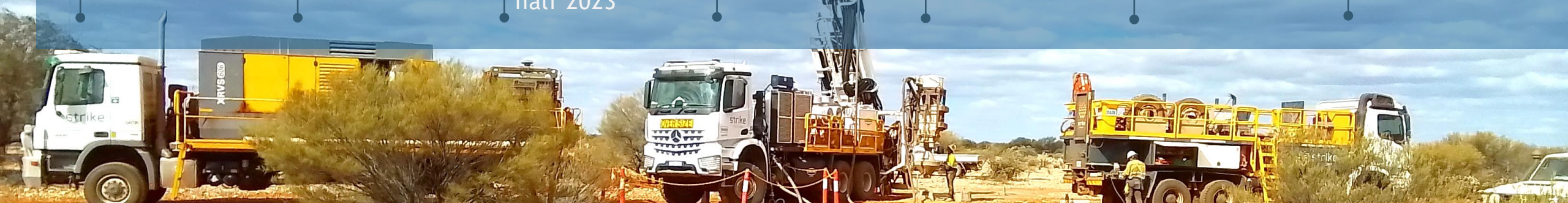
RAB drilling of PGE target at Cooper Hill and REE targets
Ceduna and Sturt - first half 2023



ON TRACK



On going evaluation of new projects that fit within Narryer Metals remit - renewable, critical minerals





Contact Details

Dr Gavin England
Managing Director

gavin@narryer.com.au
+61 8 9322 7600

Investor Relations
Evy Litopoulos - ResolveIR

evy@resolveir.com

For more info: www.narryer.com.au

ASX:NYM