



**BUXTON**RESOURCES



# RIU Explorers Conference

February 2023

# DEVELOPING AND DISCOVERING CRITICAL MINERALS

## DIRECTORS

Seamus Cornelius	Non-Executive Chairman
Eamon Hannon	Managing Director/CEO
Anthony Maslin	Non-Executive Director
Stuart Fogarty	Non-Executive Director
Sam Wright	Company Secretary

## BUXTON RESOURCES

ACN 125 049 550  
 ABN 86 125 049 550

## REGISTERED OFFICE

Suite 1, First Floor  
 14-16 Rowland St  
 Subiaco WA 6008  
 Phone +61 (0)8 9380 6063  
 Postal Address PO Box 661 Nedlands WA 6909  
 Email: [info@buxtonresources.com.au](mailto:info@buxtonresources.com.au)  
 Website: [www.buxtonresources.com.au](http://www.buxtonresources.com.au)

## TOP 5 SHAREHOLDERS

- IGO – 19.9%
- National Business Holding Ltd
- A & R Dearlove Pty Ltd
- Citicorp Nominees Pty Ltd
- BNP Paribas Nominees Pty Ltd

## CAPITAL STRUCTURE & FINANCIALS

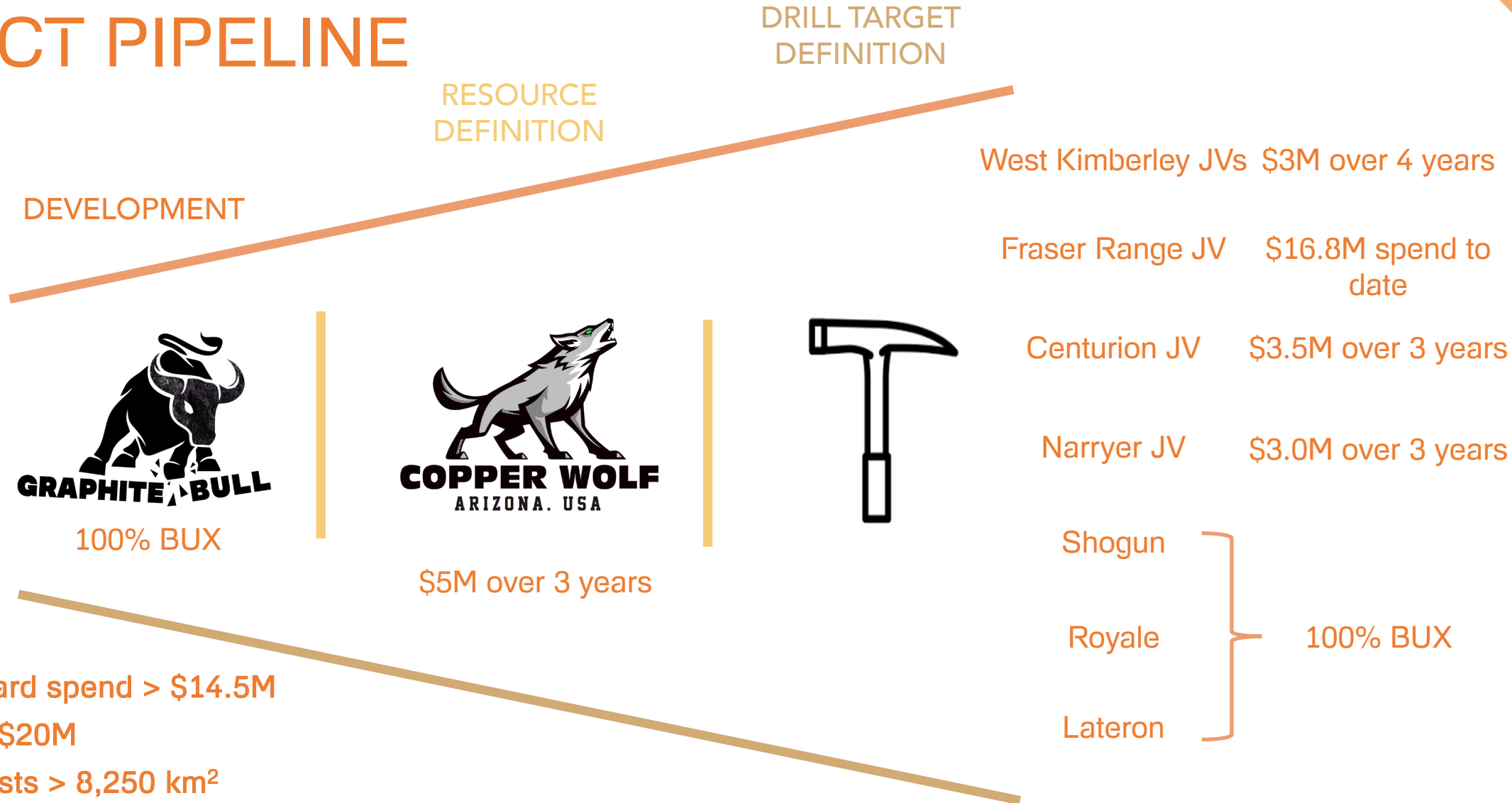
ASX:BUX 155.5M shares  
 18.2M options

CAB: A\$3.1M

Mkt Cap: A\$29.2M 06/02/23



# PROJECT PIPELINE



Committed JV forward spend > \$14.5M

JV spend to date > \$20M

BUX's tenure interests > 8,250 km<sup>2</sup>

BUX Annual Tenement Commitments < \$125k

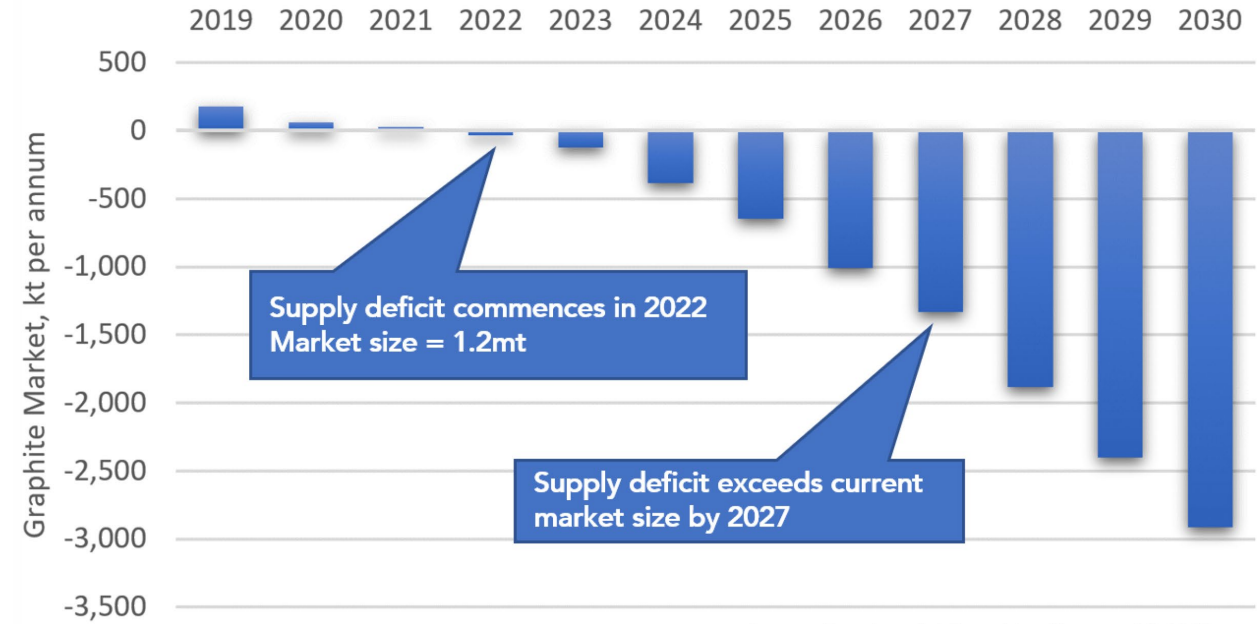
# GRAPHITE BULL (100% BUX)

Development

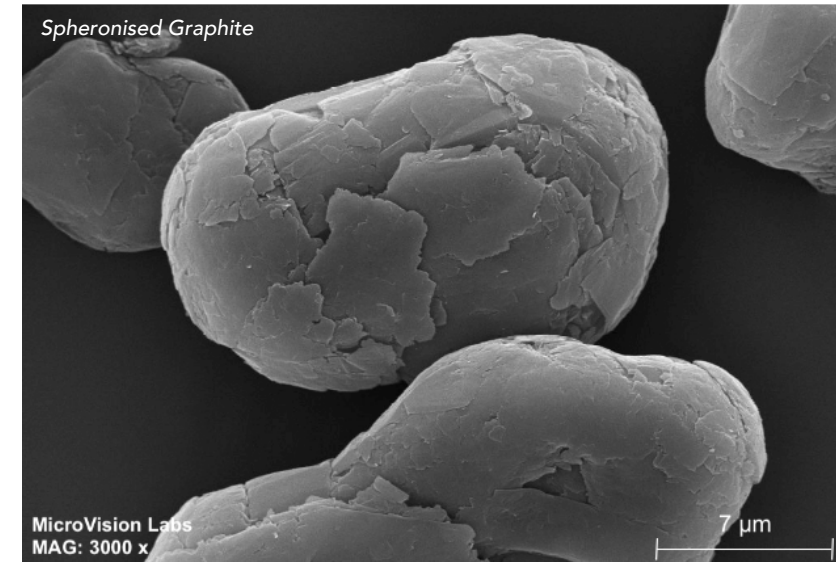
- Tier 1 Jurisdiction
- High-grade
- Exploration upside
- Outstanding Metallurgy
- Outcropping
- Fast follower advantage
- Excellent relations with stakeholders



## Graphite Market Balance



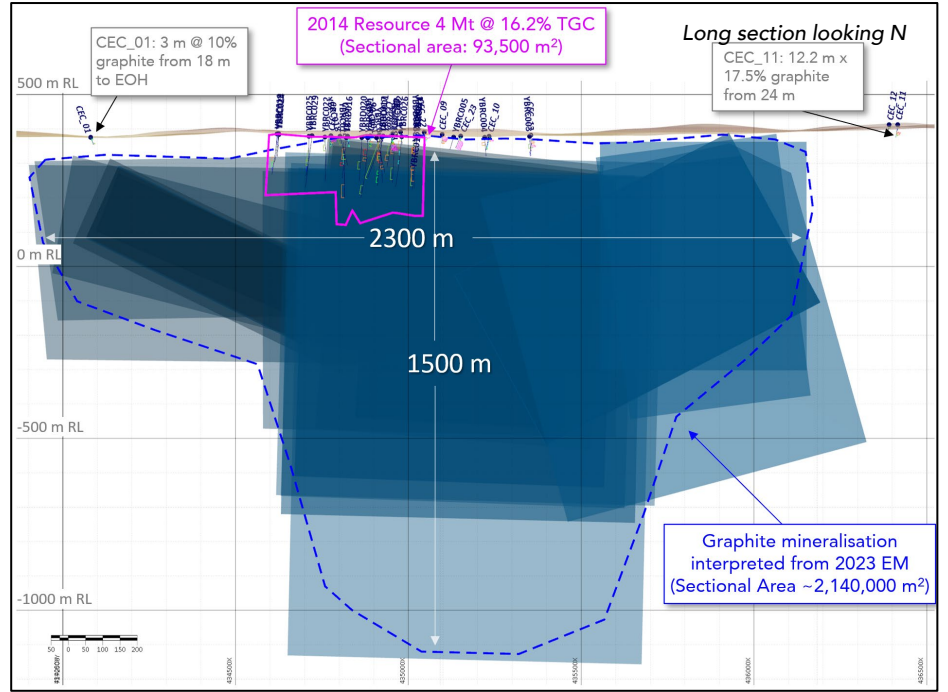
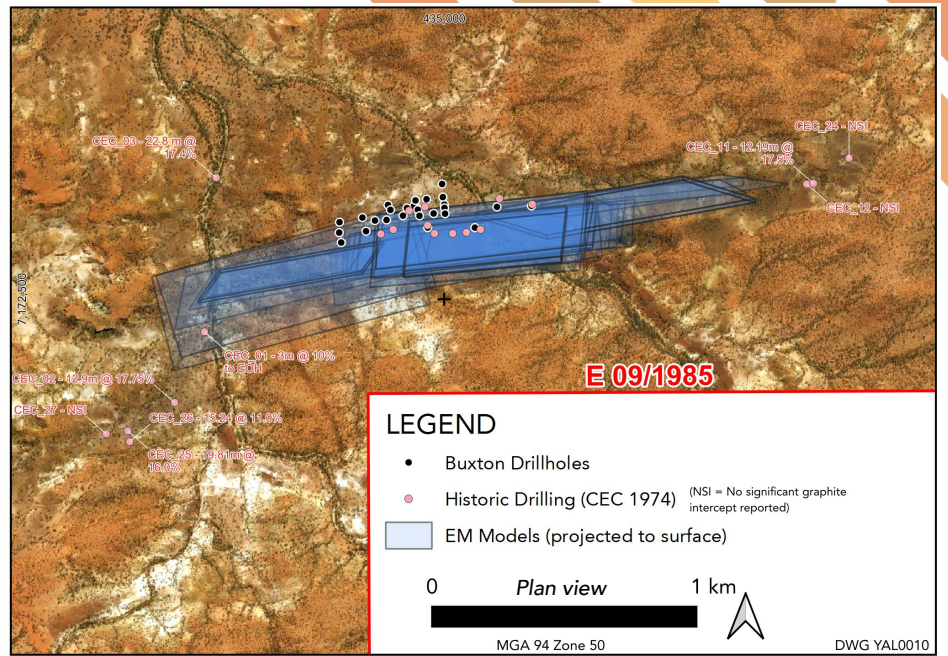
Source: Benchmark Mineral Intelligence Q2 2022 Forecast



# GRAPHITE BULL (100% BUX)

## Development – going well

- Metallurgical testwork pleasing, flotation results > 95% TGC in concentrate up to 90% recovery
  - Bulk run to produce 12 kg of concentrate - March
  - Purified Spheronised Graphite - late May
  - Battery-grade confirmation Aug-Sept
- Ground Electromagnetic survey defines large exploration upside
- Hydrological, Heritage, Flora and Fauna surveys underway
- Miscellaneous tenure for borefield, haul road and infrastructure applications in
- Drill testing of EM target Q1 2023
- Studies 2023-24; BUX will make haste slowly



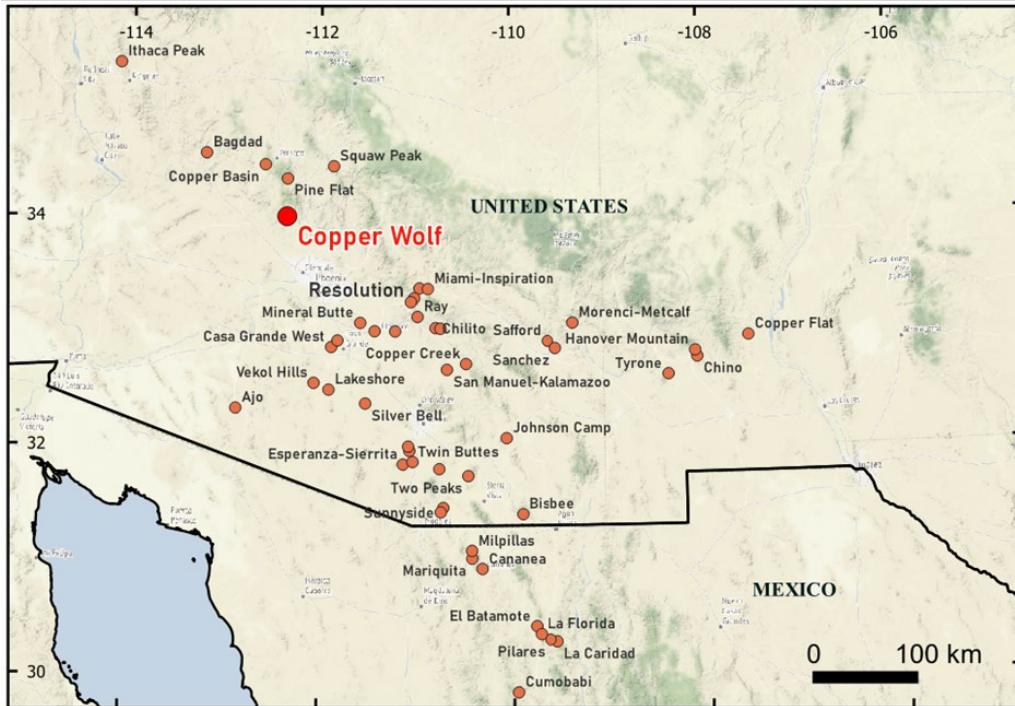
Ground EM results (ASX 07/02/2023)



# COPPER WOLF (BUX/IGO JV - IGO to earn 70%)

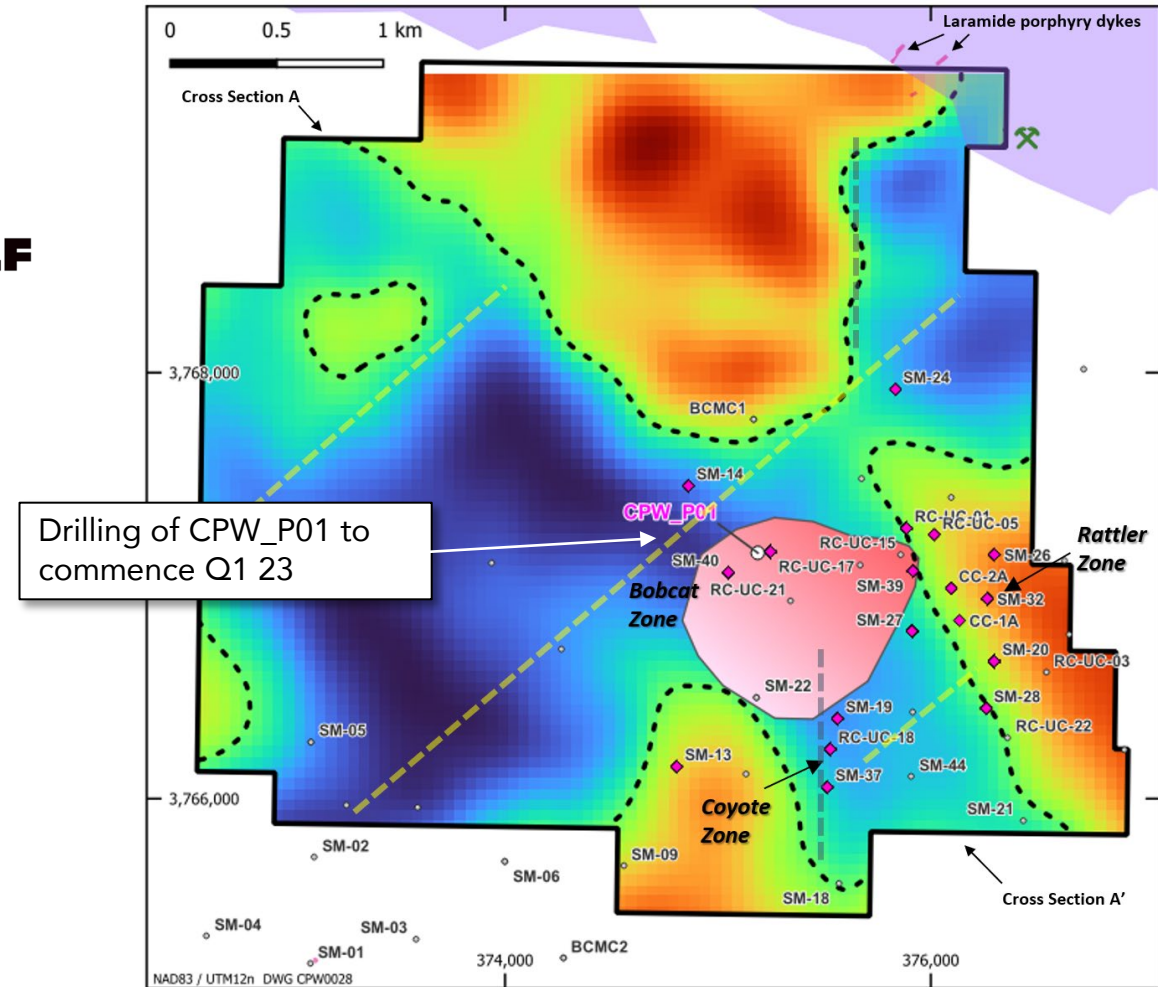
## Resource Definition in Elephant Country

- Tier 1 porphyry jurisdiction (Arizona, USA)
- Drilling to commence March (subject to drill rig availability)
- [Cu resources already identified historically – discovered in 1965](#)
- First drill hole in more than 30 years to commence in Q1 2023
- Drilling will be fully funded by IGO, spending A\$5M for 70%



Historical intercepts include

- 253m @ 0.83% Cueq (RC-UC17)
- 217m @ 0.77% Cueq (RC-UC01)
- 280m @ 0.54% Cu (SM-20 - no Mo assayed)
- All ending in mineralisation



Magnetic vector inversion image at -250m RL within the expanded project footprint displaying historical drilling with logged potassic alteration and copper mineralisation

## WEST KIMBERLEY JV (BUX/IGO JV - IGO 80%)

- BUX discovery in new magmatic nickel province in the West Kimberley
- IGO controlling exploration activities spending to earn 80%
- Aggressive program for 2023 in planning, fully funded by IGO

## FRASER RANGE JV (BUX/IGO JV - IGO 90%)

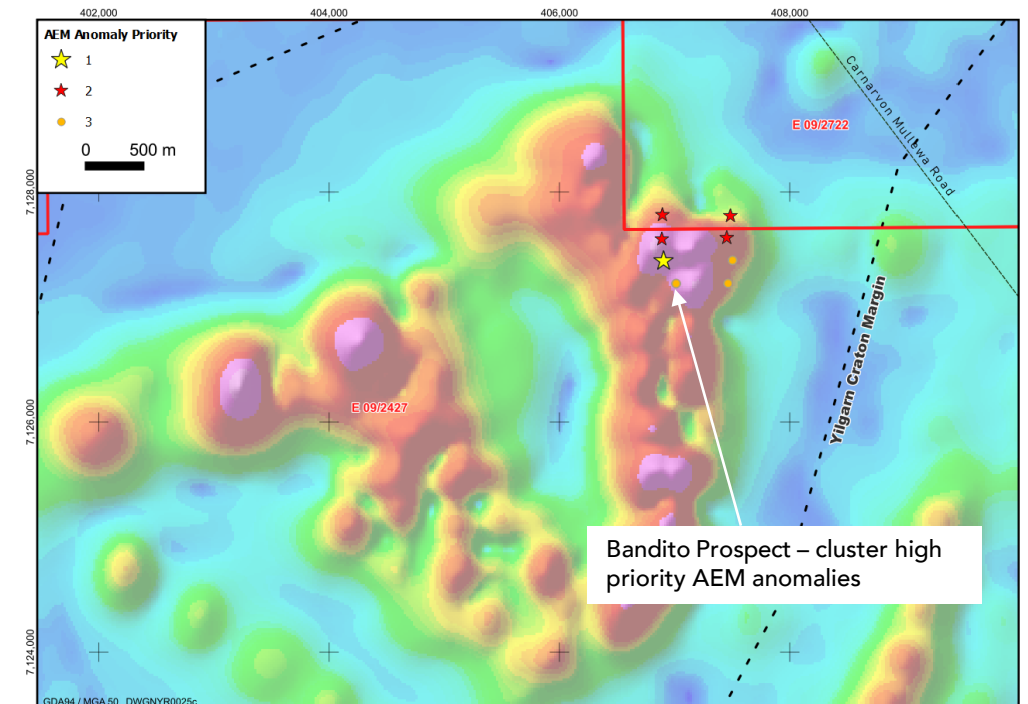
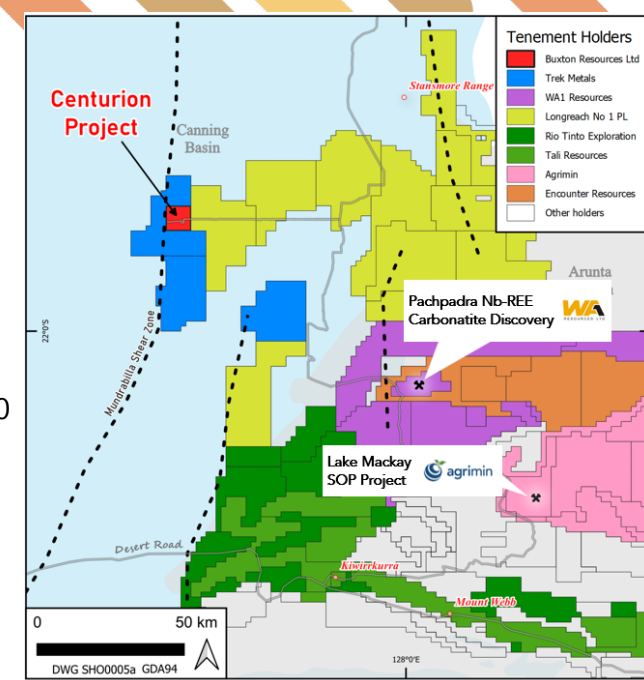
- BUX free carry to decision to mine
- Retains 100% of magnetite rights
- Adjacent to Silver Knight deposit
- IGO continuing to aggressively explore tenement package

## NARRYER JV (BUX/IGO JV - IGO to earn 51%)

- Craton margin Ni-Cu-PGE target, > 1800 km<sup>2</sup> tenure.
- Julimar-style geological setting
- IGO earning 51%
- BUX has completed gravity, AEM, and field follow-up programs
- Ground EM underway, fully funded by IGO

## CENTURION (BUX/TKM JV)

- TKM to drill test target in 2023
- Successful co-funded drilling grant of \$220,000
- NT agreements ready to sign
- BUX retain 25% to Decision to Mine



# SHOGUN

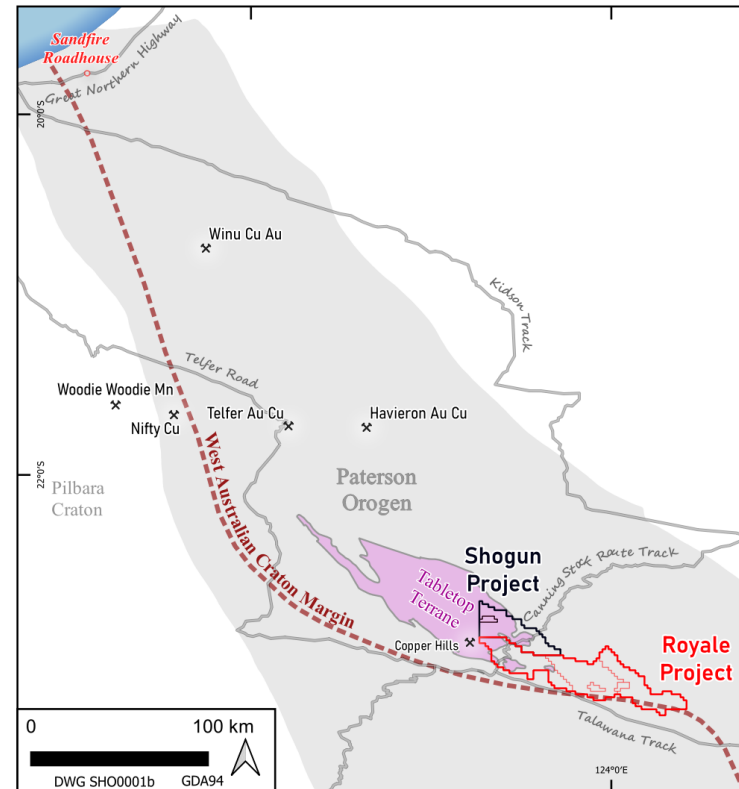
- RC drillhole BLC001 intersected Ni-depleted peridotite indicating sulphide deposit may be nearby
- Airborne gravity delineates multiple untested high density anomalies interpreted to represent ultramafic intrusions
- Transported cover < 50 m thick over 80% of project area

# ROYALE

- Open file rock chips and drillhole chemistry maps a belt of felsic intrusions with high Sr/Y indicating fertility for Cu-Au/Mo porphyry deposits
- Geophysics maps felsic pluton at depth – highest likelihood to find porphyry intrusions above this
- 50% of project has < 50 m transported cover

# LATERON

- Havieron look-alike under 80m cover, 10km from Tanami Rd
- Exploration to commence in 2023





# FORWARD LOOKING STATEMENTS

This presentation has been prepared by Buxton Resources ("Buxton"). The information contained in this presentation is a professional opinion only and is given in good faith. Certain information in this document has been derived from third parties and though Buxton has no reason to believe that it is not accurate, reliable or complete, it has not been independently audited or verified by Buxton. Any forward-looking statements included in this document involve subjective judgement and analysis and are subject to uncertainties, risks and contingencies, many of which are outside the control of, and may be unknown to, Buxton. In particular they refer only to the date of this document, they assume the success of Buxton's strategies, and they are subject to significant regulatory, business, competitive and economic risks and uncertainties. Actual future events may vary materially from those in the forward looking statements. Recipients of this document are cautioned not to place undue reliance on such forward-looking statements. Buxton makes no representation or warranty as to the accuracy, reliability or completeness of information in this document and does not take responsibility for updating any information or correcting any error or omission which may become apparent after this document has been issued. To the extent permitted by law, Buxton and its officers, employees, related corporations and agents disclaim all liability, whether direct, indirect or consequential for any loss or damage arising out of, or in connection with, any use or reliance on this presentation or information. All amounts are in A\$ unless otherwise stated

## COMPETENT PERSONS STATEMENT

The information in this report that relates to Exploration Results is based on information compiled by Mr Eamon Hannon, Fellow of the Australasian Institute of Mining and Metallurgy. Mr Hannon is a full-time employee of Buxton Resources Limited. Mr Hannon has sufficient experience which is relevant to the activity being undertaken to qualify as a "Competent Person", as defined in the 2012 edition of the Joint Ore Reserves Committee (JORC) Australasian Code for Reporting of Exploration Results, Mineral Resources and Ore Reserves. Mr Hannon consents to the inclusion in this report of the matters based on the information in the form and context in which it appears. All exploration results and geological information has been previously reported in numerous Company ASX announcements under the 2012 JORC Code. This information has not materially changed since it was initially reported.

## RELEASE AUTHORISED BY

The Board of Directors of Buxton Resources.