

# ASX ANNOUNCEMENT

ASX RELEASE: 23 February 2023

## Drilling Completed at Blanche Lithium Prospect

### HIGHLIGHTS



Eight drill holes completed at maiden Blanche Prospect drill programme.

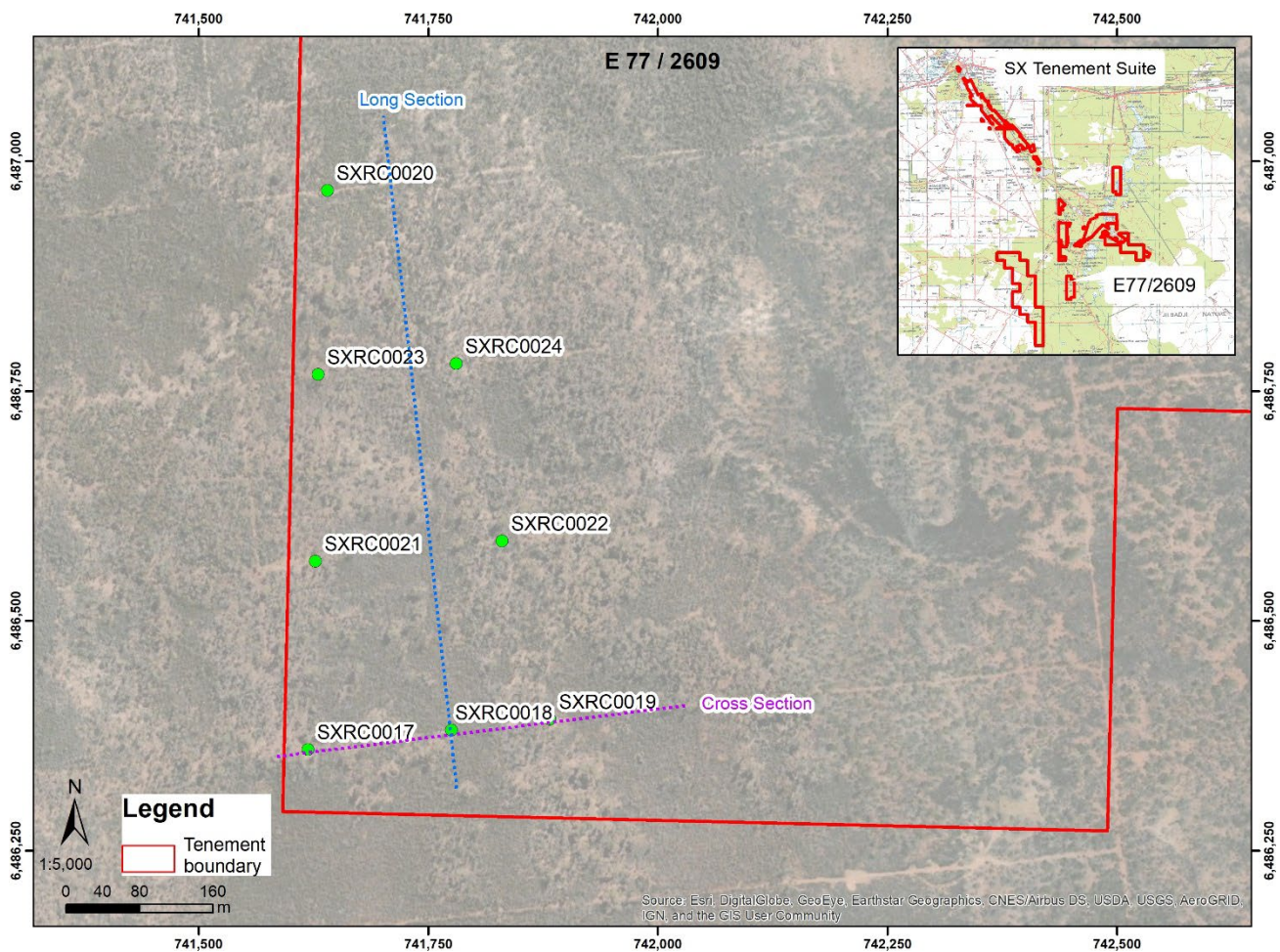


Pegmatites intercepted in all drill holes.

**Xantippe Resources (ASX: XTC) (“Xantippe”, XTC, or the “Company”)** is pleased to announce the completion of its maiden drill programme at the Blanche Lithium Prospect in the Southern Cross project. A total of eight holes were drilled for 1,878m over the past month with pegmatite intercepted in all drill holes. The maiden drilling has confirmed thick pegmatite(s) continuing over 500m of strike length on Xantippe’s wholly owned tenement E77/2609, which lies about 30km south of the town of Marvel Loch and 40km north-west of Covalent Lithium’s Mt Holland Project. *See XTC ASX Release 13 February 2023 for drilling details.* The results are highly encouraging and highlight the potential for this area to host lithium bearing pegmatites of significant size.

Laboratory assays from the first four holes are expected to be returned by the end of the week, while work is being undertaken on site to collect samples from the remaining four holes (SXRC0021-24) and deliver to the lab for the same analysis.

Interpretation work has already begun based on the geological observations from the drilling and are presented as sections in Figure 2 and 3 below. These interpretations are preliminary in nature and subject to change, with the logging of the final four holes still to be finalised.



**Figure 1: Drill locations at the Blanche Prospect on E77/2609.**

Hole ID	Easting (m)	Northing (m)	Depth	Comments
SXRC0017	741619	6486360	216	Pegmatite encountered
SXRC0018	741775	6486381	228	Pegmatite encountered
SXRC0019	741882	6486393	204	Pegmatite encountered
SXRC0020	741640	6486968	234	Pegmatite encountered
SXRC0021	741627	6486565	246	Pegmatite encountered
SXRC0022	741830	6486587	270	Pegmatite encountered
SXRC0023	741630	6486768	240	Pegmatite encountered
SXRC0024	741780	6486780	240	Pegmatite encountered

**Table 1: Drill hole details.**

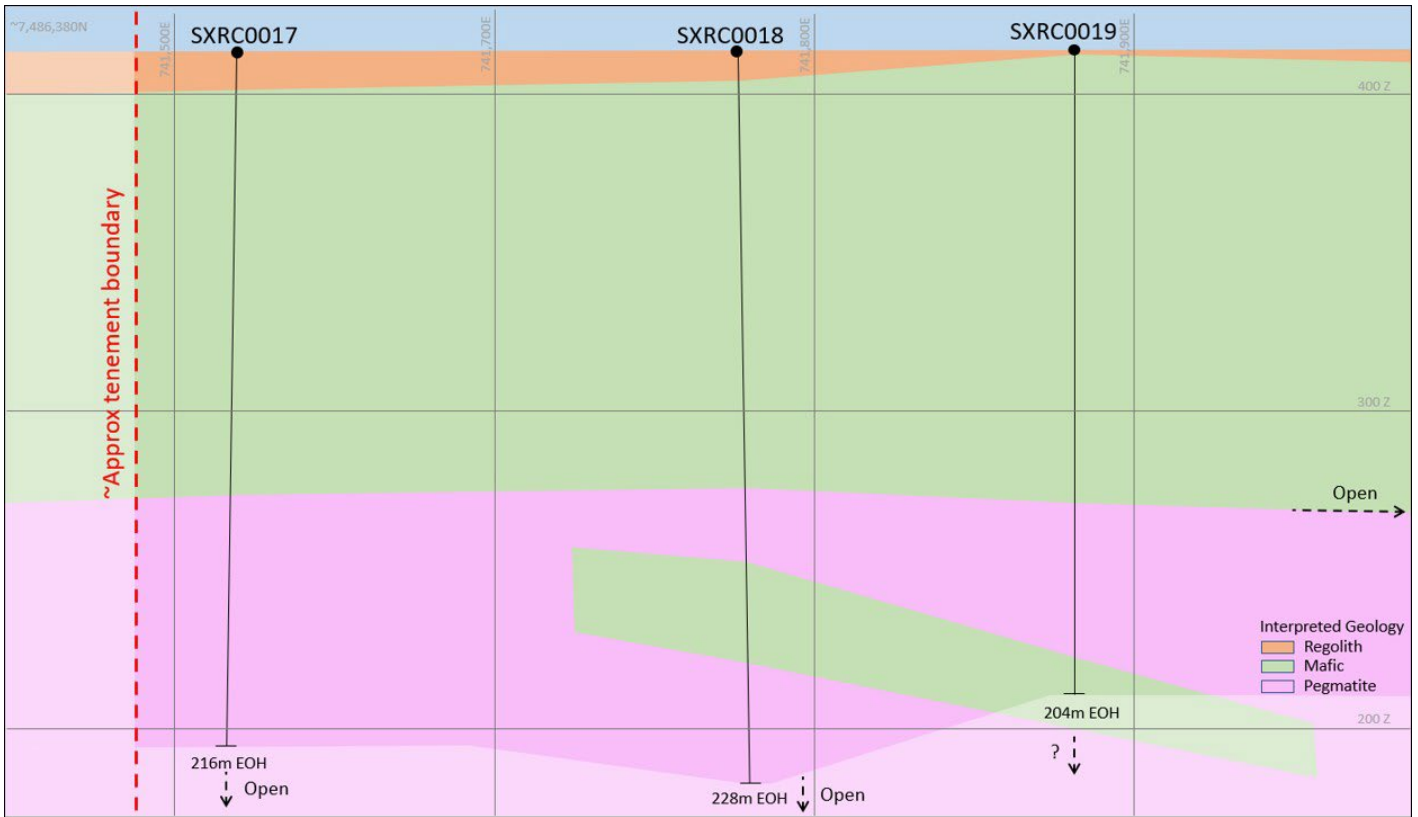


Figure 2: Cross section at ~7,486,380mN showing first drill line.

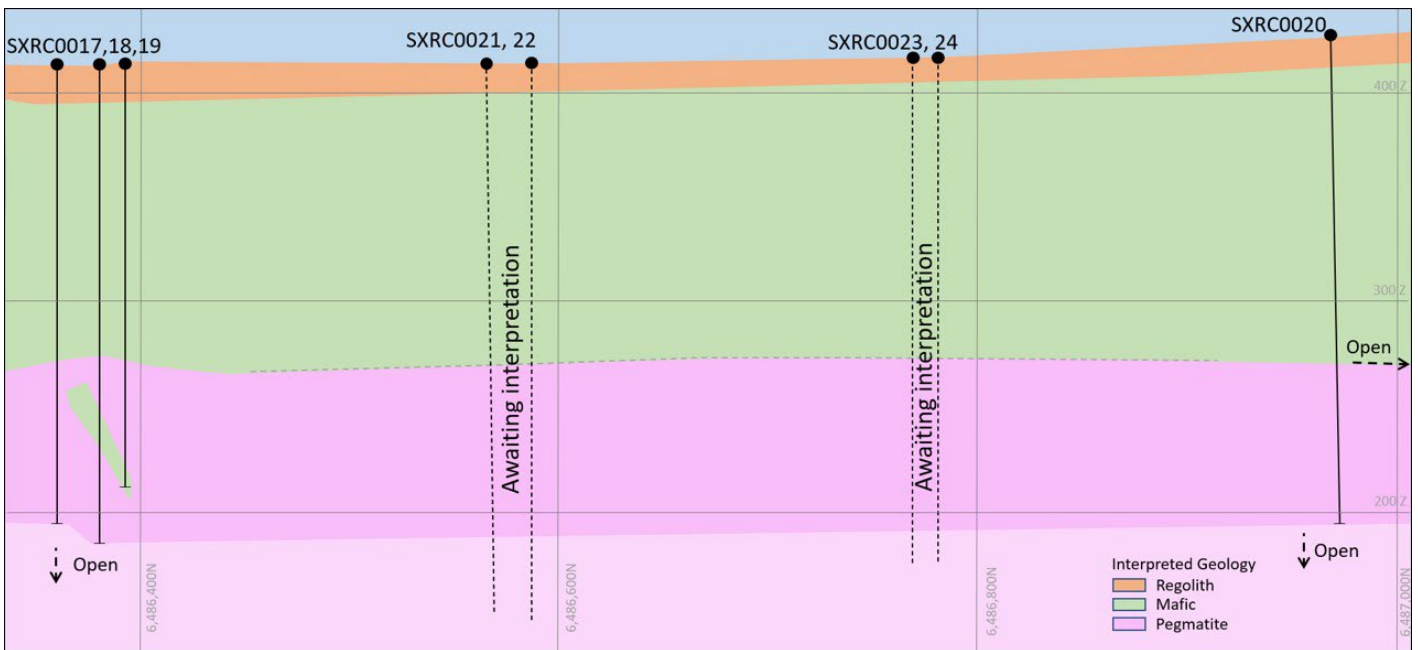


Figure 3: Long section of preliminary drilling results.



**Cautionary statement:** While the Company is very encouraged by the geology identified in field logging, no qualitative or quantitative assessment of mineralisation within pegmatites is possible at this stage. Geological logging is based on visual interpretations and should not be considered a substitute for laboratory analysis. Visual observation of lithium-bearing minerals within pegmatites does not necessarily equate to lithium mineralisation. Laboratory assays are required to confirm the presence and grade of any contained lithium. Given the nature of lithium mineralisation, it is not possible to estimate by visual assessment the abundance of any lithium within the pegmatites identified at the project. Laboratory assays are required to determine the concentration of lithium mineralisation within the reported pegmatite samples.

#### **Competent Persons Statement**

The Exploration Results reported in this announcement are based on, and fairly represent, information and supporting documentation prepared by Mr Brodie Box, MAIG. Mr Box is a geologist and has adequate professional experience with the exploration and geology of the Western Australian Goldfields to qualify as a Competent Person as defined in the 2012 Edition of the Joint Ore Reserves Committee (JORC) Australasian Code for Reporting of Exploration Results, Mineral Resources and Ore Reserves. Mr Box consents to the form and context in which the Exploration Results are presented in this announcement.

#### **This announcement has been approved for release by:**

John Featherby

Executive Chairman

**Xantippe Resources Limited**

Phone: +61 8 6143 1840

Email: [info@xantippe.com.au](mailto:info@xantippe.com.au)

[www.xantippe.com.au](http://www.xantippe.com.au)

#### **About the Southern Cross Gold Project**

---

**The Southern Cross Project is located 380km east of Perth, southeast of Southern Cross in the Yilgarn Goldfield.**

**The project comprises 16 Prospecting Licences and 7 Exploration Licences with a combined area of 197 km<sup>2</sup>, over mostly contiguous tenements covering over 40km of strike of the Southern Cross Greenstone Belt, which has historically produced around 15Moz gold, predominantly from the Marvel Loch and Southern Cross centres, both of which are in operation to varying extents.**

**The project area is serviced by sealed roads, grid power, scheme water, rail and town amenities. Minjar operates the Marvel Loch plant nearby and Ramelius Resources operates the Edna May facility some 60 kilometres to the west.**