

# SOLSTICE

MINERALS LTD

---

INVESTOR UPDATE

March 2023

# IMPORTANT NOTICES AND DISCLAIMERS

## Nature of Document

The purpose of this presentation is to provide general information about Solstice Minerals Limited (Solstice) which is current as at the date released unless otherwise specified. It is information in a summary form and does not purport to be complete. The information in this presentation should be read in conjunction with Solstice's other announcements lodged with the ASX.

## No Advice or Offer

This presentation is presented for informational purposes only. It does not constitute an offer, invitation, solicitation or recommendation or advice with respect to the issue, purchase, or sale of any securities or other financial products in Solstice. It is not intended to be, and is not, a prospectus, product disclosure statement, offering memorandum or private placement memorandum for the purpose of Chapter 6D of the Corporations Act 2001. It is not recommended that any person makes any investment decision in relation to Solstice based solely on this presentation. This presentation does not necessarily contain all information which may be material to the making of such a decision. Any investor should make its own independent assessment and determination as to Solstice's prospects prior to making any investment decision and should not rely on the information in this presentation for that purpose.

This presentation does not constitute an offer to sell, or the solicitation of an offer to buy, any securities in the United States or to any "US person" (as defined in Regulation S under the US Securities Act of 1933, as amended (Securities Act)) (US Person). Securities may not be offered or sold in the United States or to US Persons absent registration or an exemption from registration. Solstice's shares have not been, and will not be, registered under the Securities Act or the securities laws of any state or jurisdiction of the United States. This presentation is not for distribution directly or indirectly in or into the United States or to US Persons.

Except for statutory liability which cannot be excluded, Solstice as well as its officers, employees and advisers expressly disclaim any responsibility for adequacy, accuracy, reasonableness or completeness of the material contained in this presentation and exclude all liability whatsoever (including in negligence) for any loss or damage which may be suffered by any person as a consequence of any information in this presentation or any error or omission therefrom. Solstice accepts no responsibility to update any person regarding any inaccuracy, omission or change in information in this presentation or any other information made available to a person nor any obligation to furnish any person with any further information.

## Disclaimer/Forward Looking Information

This presentation contains certain forward-looking statements, guidance, forecasts, estimates, prospects and projections in relation to future matters that may involve risks or uncertainties and may involve significant items of subjective judgement and assumptions of future events, which as at the date of this presentation are considered reasonable, but that may or may not eventuate (Forward-Looking Statements).

Forward-Looking Statements can generally be identified by the use of forward-looking words such as, 'anticipate', 'estimates', 'will', 'should', 'could', 'may', 'expects', 'plans', 'forecast', 'target' or similar expressions and may include, without limitation, statements regarding plans, strategies and objectives of management, anticipated production and expected costs. Indications of, and guidance on future earnings, cash flows, costs, financial position and performance are also Forward-Looking Statements.

Persons reading this presentation are cautioned that such statements are only predictions, and that actual future results or performance may be materially different. Forward-Looking Statements, opinions and estimates included in this presentation are based on assumptions and contingencies which are subject to change, without notice, as are statements about market and industry trends, which are based on interpretation of current market conditions. Forward-Looking Statements are provided as a general guide only and should not be relied on as a guarantee of future performance.

Forward-Looking Statements are subject to known and unknown risks, uncertainties and other factors that may cause the Company's actual results, level of activity, performance or achievements to be materially different from those expressed or implied by such forward-looking information. No representation or warranty, express or implied, is made by Solstice that any Forward-Looking Statement will be achieved or proved to be correct. Further, Solstice disclaims any intent or obligations to update or revise any Forward-Looking Statements whether as a result of new information, estimates or options, future events or results or otherwise, unless required to do so by law.

## JORC 2012 Competent Persons Statement

The information in this presentation that relates to Exploration Results is extracted from the ASX announcements dated 10th March 2023 ("High Grade Nickel Sulphide Drill Results at GSP Prospect"), 19 December 2022 ("Massive Sulphide Intersected in Nickel Drilling at GSP Prospect, Ringlock Dam"), 8 December 2022 ("Final Diamond Drill Assay Results Return 20m at 3.25g/t at Hobbes Gold Prospect, Yarri Project"), 2 December 2022 ("Commencement of Nickel Drilling at Ringlock Dam, Eastern Goldfields"), 15 November 2022 ("Encouraging Primary Gold Intercepts at the Hobbes Gold Prospect"), 8 September 2022 ("Significant Gold Mineralisation in RC Drilling at Hobbes"), 30 August 2022 ("Gold Anomalies Defined by Soil Sampling at Cosmo Licences"), 14 July 2022 ("Significant Gold Anomalies Confirmed by Infill Soil Sampling at the Nippon Licence, Ponton Project"), ASX: ORR 26 March 2022 ("March 2022 Quarterly Activities Report"), ASX: ORR 15 March 2022 ("Demerger & IPO Presentation"), 14 March 2022 ("Prospectus") and ASX: ORR 8 February 2022 ("Exploration Update, Eastern Goldfields, Western Australia") which are available at [www.solsticeminerals.com.au](http://www.solsticeminerals.com.au).

Solstice confirms that it is not aware of any new information or data that materially affects the information included in the original announcements and that all material assumptions and technical parameters underpinning the Exploration Results in the original announcements continue to apply and have not materially changed. Solstice confirms that the form and context in which the Competent Persons' findings are presented have not been materially modified from the original announcements.



# Active, funded gold and battery metals explorer.

---

Experienced Board and management team with track record of success

---

Strong mix of technical and capital markets expertise

---

A large, quality ground holding in highly prospective West Australian terrain

---

Well funded for active exploration programs and corporate development opportunities

## Gold & Metals Exploration in WA's Yilgarn Craton.

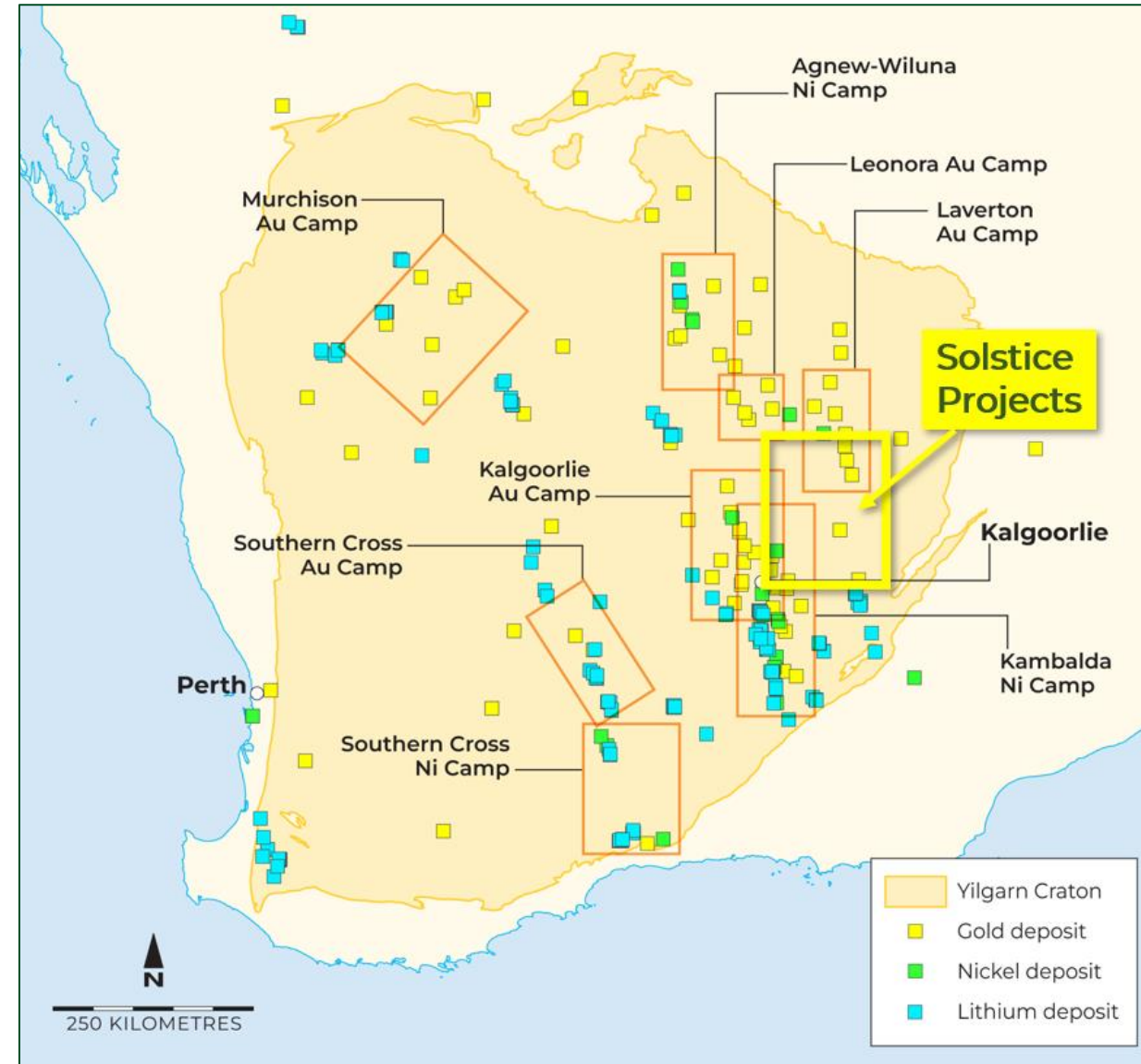
A renowned metals exploration terrain, now delivering battery metals esp. lithium successes

Significant ~**2,950km<sup>2</sup>** ground holding in the heart of the Goldfields, access agreements in place and 'ready to go'

Solstice technical team with deep experience in area - **data-led target generation & 'boots on ground' validation, focus on gold and battery metals**

Compelling mix of advanced prospects such as **Hobbes** (gold) **Ringlock Dam** (nickel), plus a pipeline of new targets for testing

Strong skills and capacity to pursue corporate growth opportunities



# Experienced board and management team

## Matthew Yates Non-Executive Chairman

+35 years (Geologist) Executive Chairman and former CEO & MD of OreCorp Limited, former MD of OmegaCorp and Joint MD of Mantra Resources

## Nick Castleden Managing Director and CEO

+25 years (Geologist) Former MD Apollo Consolidated Ltd, extensive industry experience with LionOre, MPI, Perilya Mines, MIM

## Robert Rigo Non-Executive Director

+40 years (Engineer) Former VP Project Development of Equinox Minerals & GM Technical Services for Newcrest

## Mike Klessens Non-Executive Director

+30 years (Certified Practising Accountant) Former VP Finance and CFO of Equinox Minerals, extensive industry experience

## Alastair Morrison Non-Executive Director

+30 years (Geologist) Former Exploration Manager of East African Gold Mines, last 18 years as analyst & portfolio manager

## Silfia Morton/James Doyle Joint Company Secretaries

Corporate and capital markets advisory experience as well as past accounting and senior audit management roles

## Dr Mark Alvin Exploration Manager

+25 years (Geologist) Experienced explorationist, formerly with Rio Tinto, Nyrstar, Strandline & MRG Metals

## John McIntyre Chief Geologist

+35 years (Geologist) multi-commodity exploration experience, formerly with Greatland Gold, Chalice Mining, Liontown Resources & Hunter Resources

# Corporate Overview

**ASX**

SLS

**100.3M**

Shares on issue

**A\$16M**

Market Cap at 16c

**A\$12.0M**

Cash (as at 31 Dec 2022, unaudited)

**NIL**

Debt

**A\$4M**

EV

**14.7M**

Listed 20c Options

**15.2M**

Unlisted 29c Options

**0.8M**

Performance Rights

**Board & Associates**

**8%**

**Nero Resource Fund**

**8.5%**

**Precision Opportunities Fund**

**4.9%**

**Top 20**

**47%**

## Belt scale land position in Eastern Goldfields.

Proven, high-endowment gold terrain at **Yarri Project**, proven high-tenor nickel sulphide at **Ringlock Project** all within 150km NE of Kalgoorlie

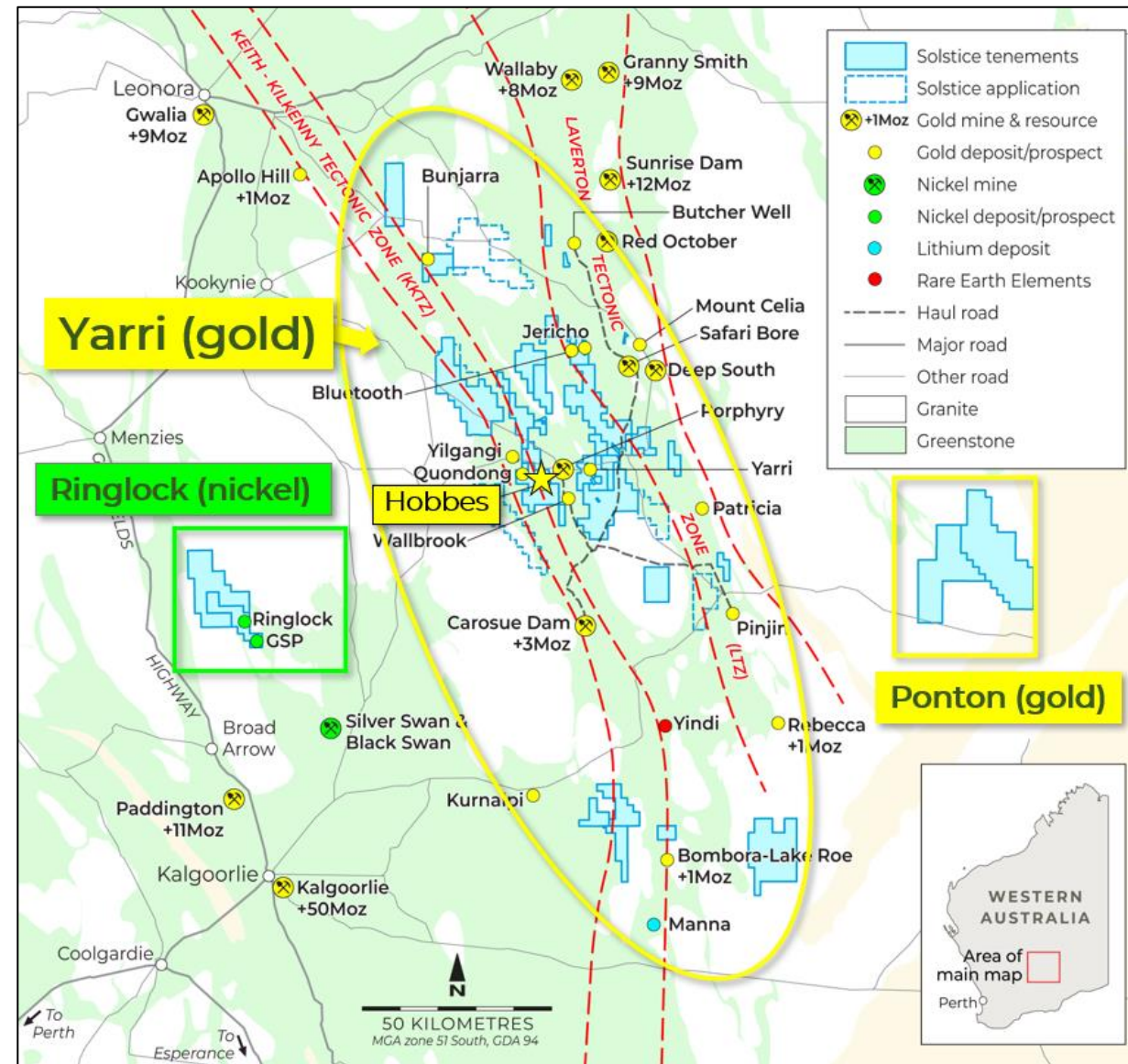
Tenure highly prospective for gold & nickel, completely unexplored for lithium and rare earth elements

Solstice is a key player around >3Moz Carosue Dam-Porphyry gold hub (Northern Star ASX: NST)

Extensive ground holding assembled at the **Hobbes Gold Prospect**, adjacent to operating gold mine

Battery metals exposure at **Ringlock Dam** - nickel sulphide prospects on strike extensions of ultramafic belt that hosts the high-grade Silver Swan massive nickel sulphide deposit

Other project areas – e.g. **Ponton** offer new-frontier exploration opportunities



# Ringlock Project. Nickel sulphide upside.





## Ringlock Project. Exciting Ni prospects on key belt.

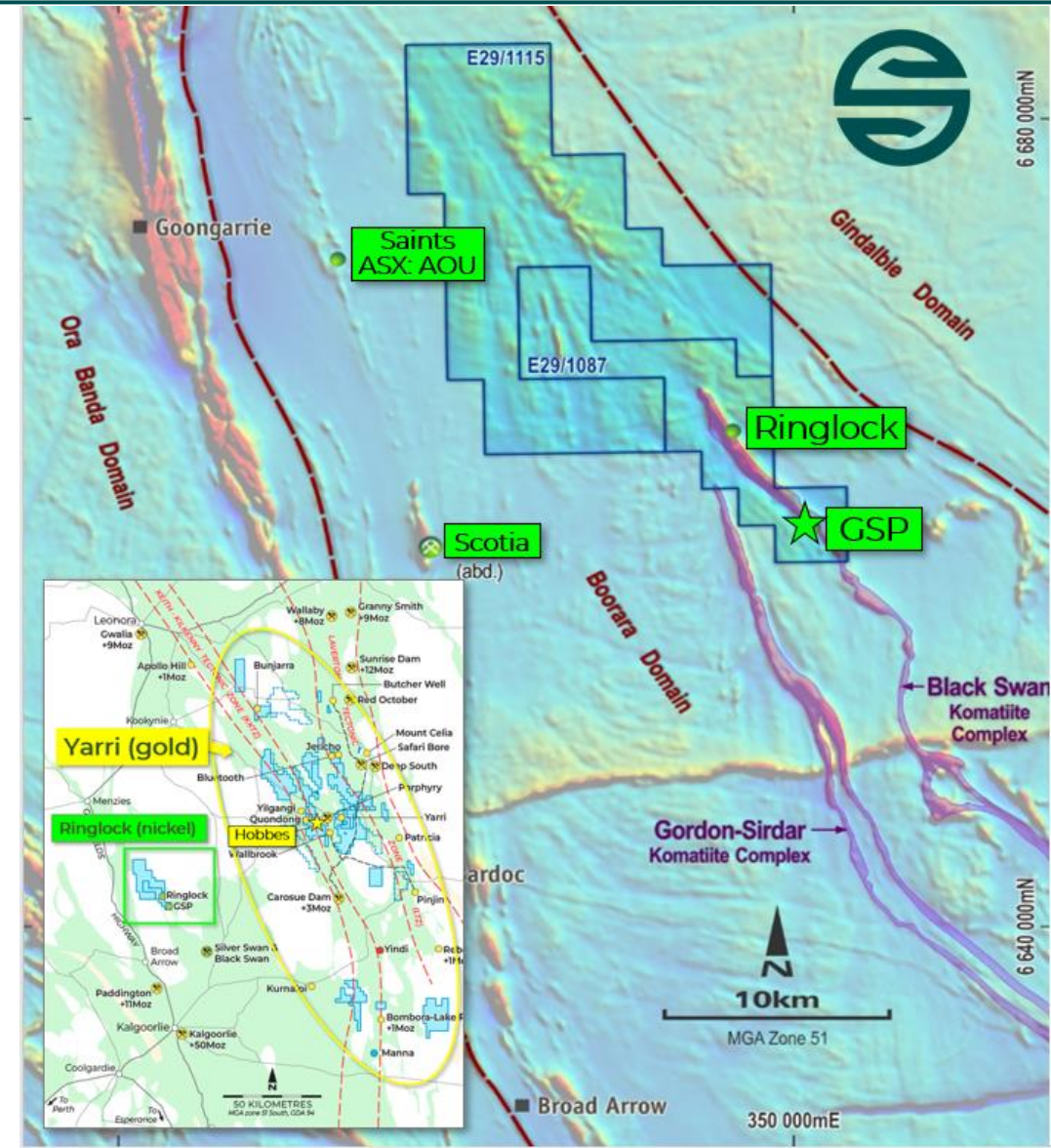
Strike extension of the Black Swan Komatiite Complex - 30km along strike from high-grade **Silver Swan** massive nickel sulphide deposit (previous UG production 2.7Mt @ 5.1% Ni)

10km ultramafic trend, two areas of known Ni sulphide mineralisation in historical drilling: **GSP** and **Ringlock**, both open to depth

New high-grade Ni sulphide hits and **best-ever intercept** of **1.81m @ 18.1% Ni<sup>2</sup>** establish GSP as genuine high-tenor nickel system

Fertile ultramafic terrain, historical **Scotia** nickel mine and **Saints** nickel sulphide resource (ASX: AOU) to west

1. Source: Poseidon Nickel Presentation – Australian Nickel Conference 5 October 2021
2. ASX: SLS 10th March 2023 (High Grade Nickel Sulphide Drill Results at GSP Prospect)



## Ringlock Project. GSP Prospect.

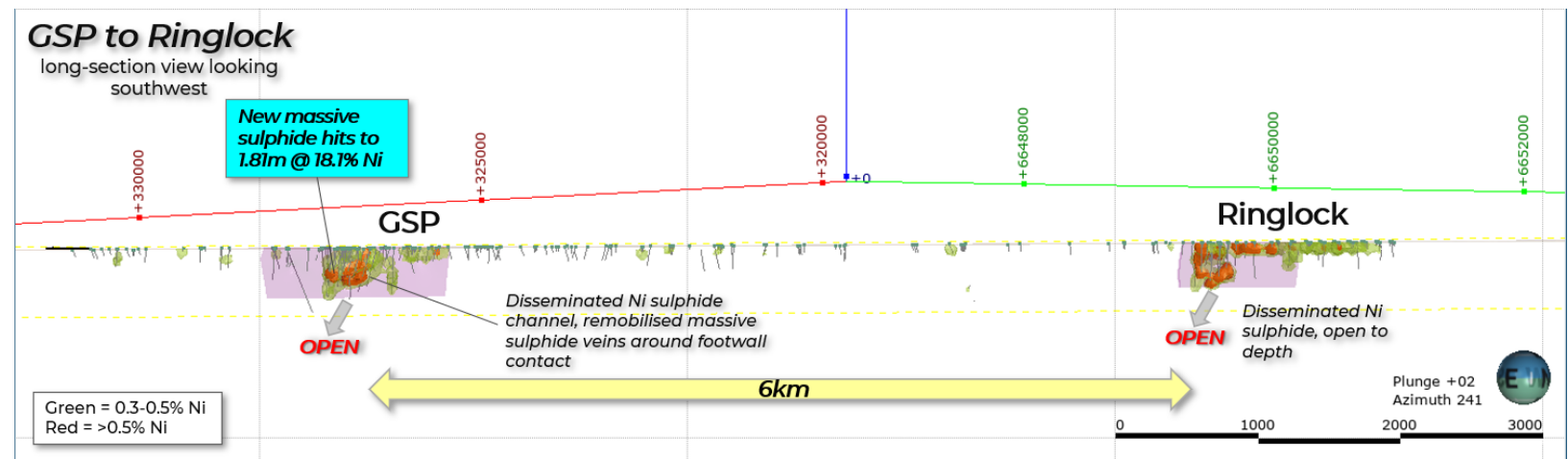
**GSP** is the most advanced target with new high-grade hits adding to understanding of historical nickel sulphide intercepts<sup>1</sup>

- 8.0m @ 2.4% nickel from 113.4m (Inc. 1.5m @ 6.8%) (GS033)
- 2.9m @ 2.9% nickel from 166.7m (GS013)
- 4m @ 2.3% nickel from 104m (MJRC047)
- 6m @ 2.3% nickel from 85m (RPD002)
- 4.0m @ 1.4% nickel from 145m (MJRC048)



Solstice first drill program<sup>2</sup> hit high-tenor nickel-sulphide veins at or near footwall contacts, with best result of **1.81m @ 18.1%** nickel from 101.85m (GSPDD0005)

**Ringlock:** historical disseminated sulphide intercepts open to depth



1. ASX: SLS 02/12/2022 (Commencement of Nickel Drilling at Ringlock Dam) 2. ASX: SLS 19/12/2022 (Massive Sulphide Intersected at the GSP Nickel Prospect)

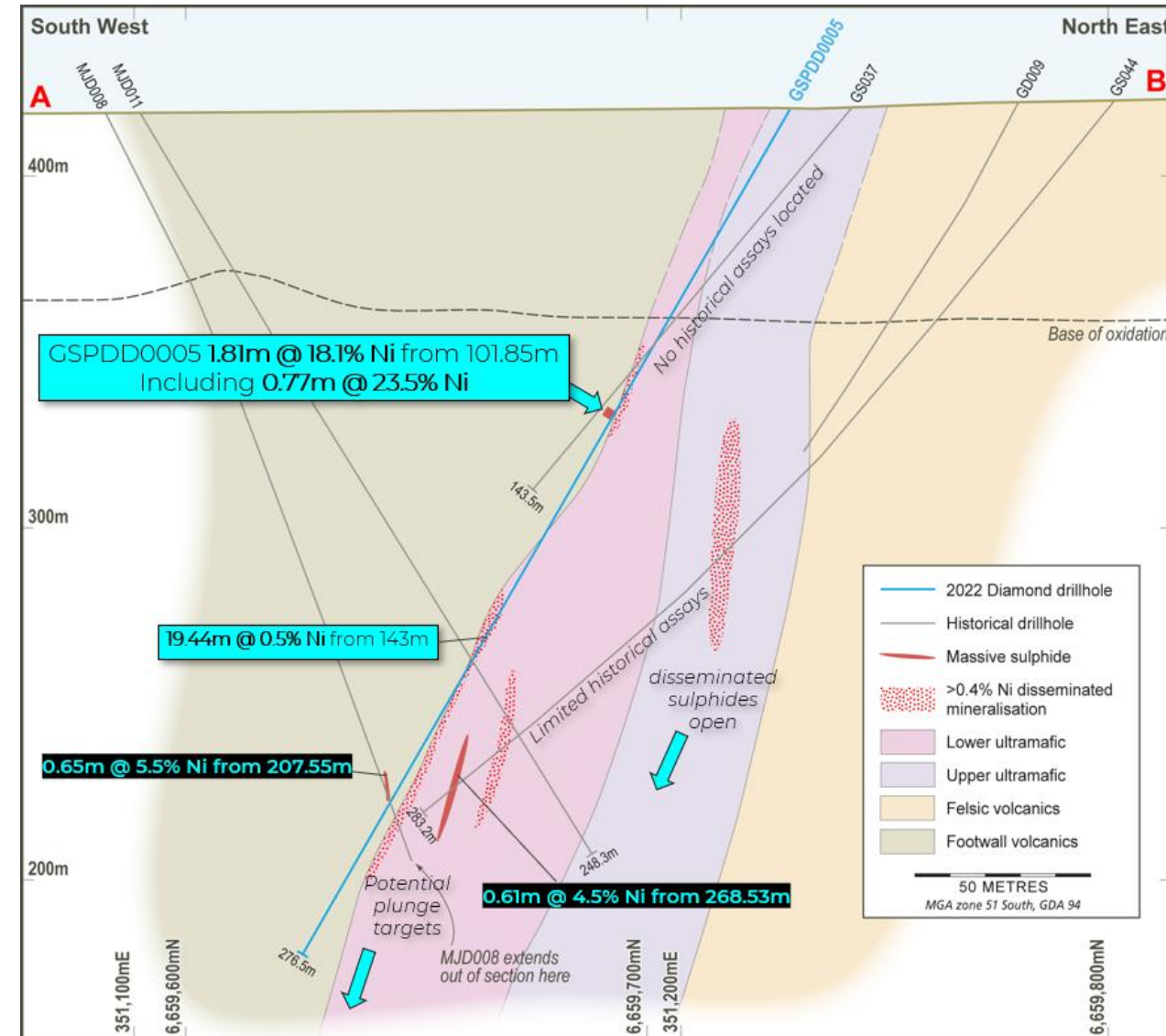
## GSP Prospect. Next steps

Technical team to use new results to update and build on GSP geological model – determine mineralised (disseminated Ni sulphides) flow geometry and vectors to intact footwall massive sulphide targets

Incorporate new and historical down-hole EM surveys – determine vectors to massive sulphide accumulation

Follow-up diamond drill-testing of defined high-impact GSP targets

Ringlock: diamond drill test any priority targets close to historical disseminated nickel sulphide zones



A group of seven people, including men and women, are gathered around a table outdoors in a field. They are looking at a large map or document spread out on the table. The map has a pinkish-red shaded area. The people are wearing various types of hats and casual work clothes. The background shows a dry, open landscape with sparse trees and a clear sky.

Yarri Project.  
Advanced gold  
at Hobbes, next  
to existing  
infrastructure.

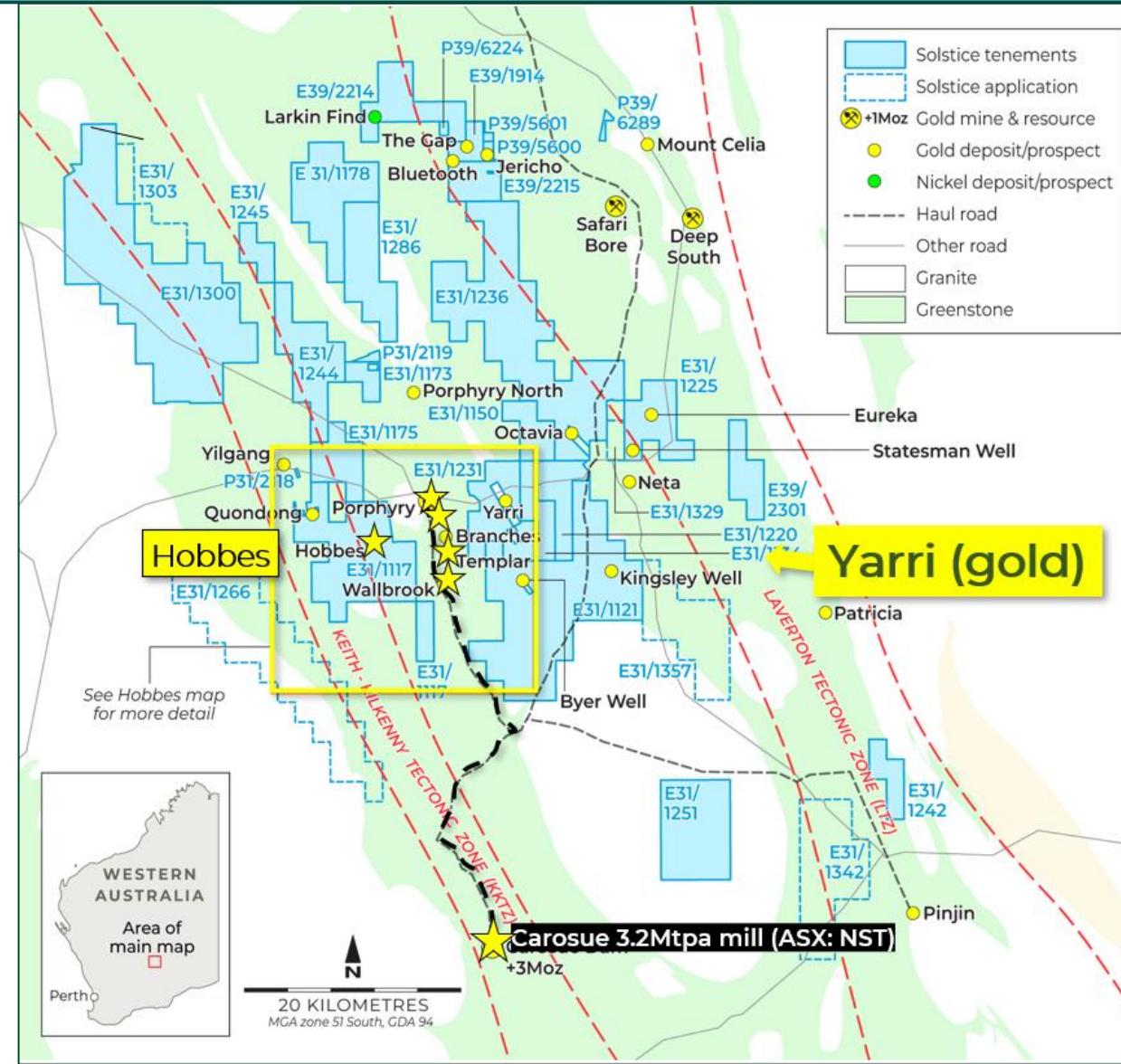
## Yarri Project.

Favourably located within Keith-Kilkenny and Laverton Tectonic Zones - proven metal conduits hosting numerous large gold deposits

Hobbes Gold Prospect (E31/1117 – 80%) advancing toward maiden MRE following recent infill drilling

Hobbes is approximately 5km west of Northern Star’s Porphyry mining operations - established infrastructure next door

Nexus Minerals (ASX: NXM) progressing the adjoining Crusader-Templar gold discovery



## Hobbes Licence (80%).

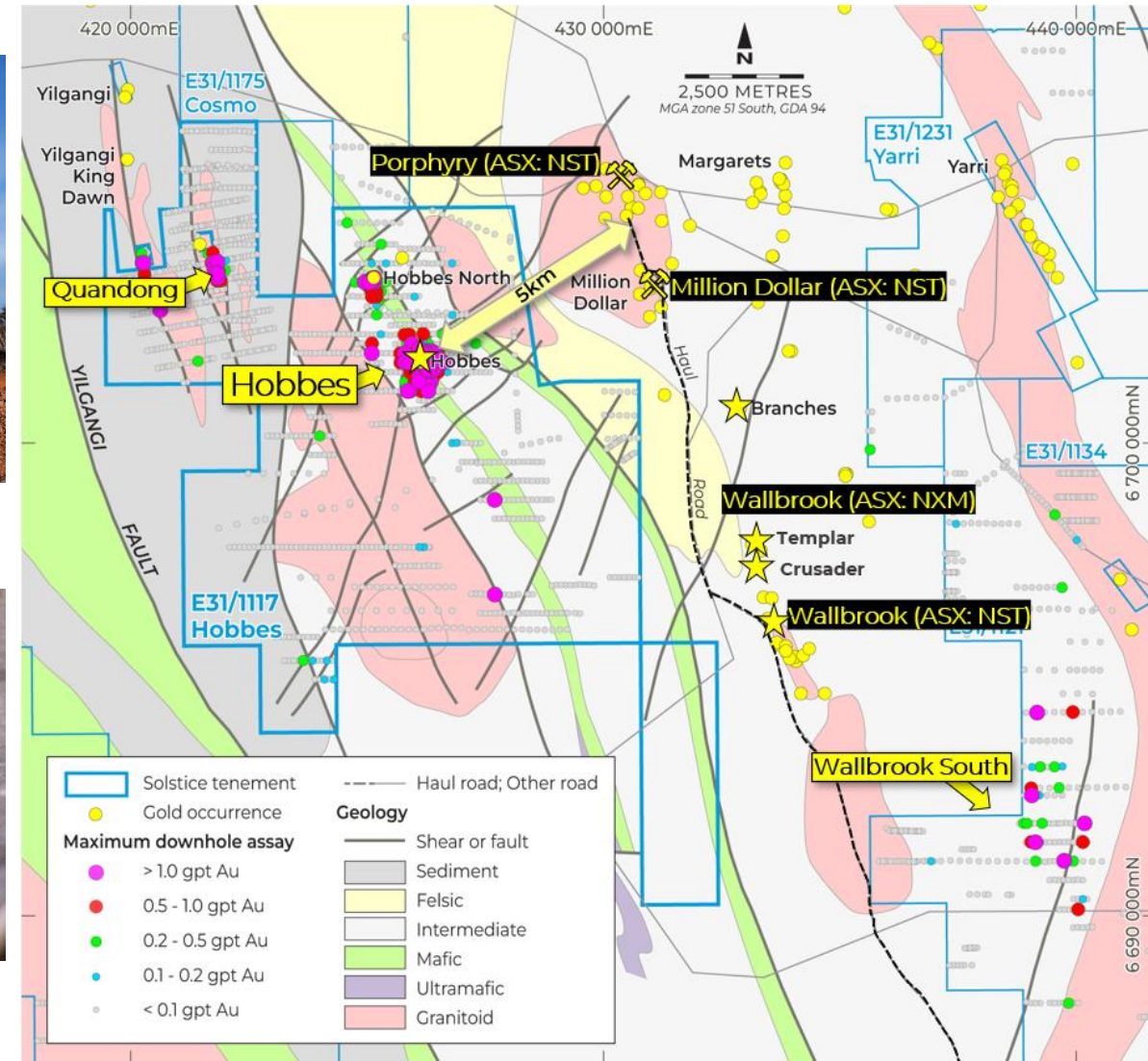
Multiple gold hits in soil-covered targets, in sight of operating mine

Highly-prospective setting, good structural preparation

Well-defined supergene gold deposit, evolving bedrock gold model

Evaluation of maiden MRE options following geology modelling

Potential for future commercial outcomes



Hobbes Prospect.  
Supergene gold  
endowment over  
strong fresh rock  
mineralisation.

## Hobbes Gold Prospect.

New geological interpretation based on combination of litho-geochemistry and aeromagnetics

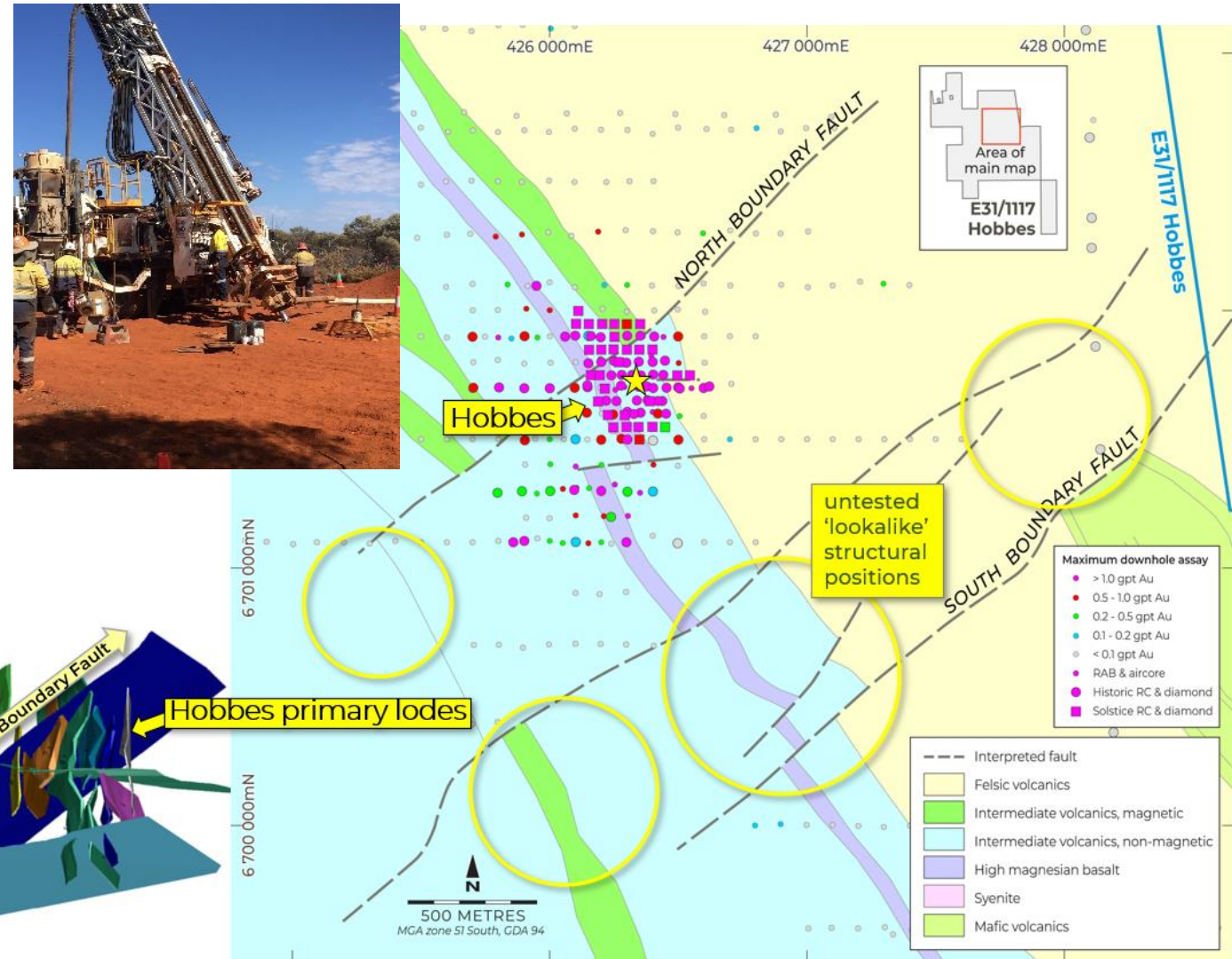
Bedrock gold controlled by local NE striking faults - multiple west-dipping gold surfaces within local fault block

Coincident with altered and demagnetised zone

Untested 'lookalike' structural targets on-strike immediately south of Hobbes system

Untested 'lookalike' targets along NE fault corridors

Under-tested in key areas, ineffective historical RAB drilling





## Hobbes supergene blanket.

Broad flat-lying gold footprint up to 1km in strike length, 400m across strike and up to 30m thick

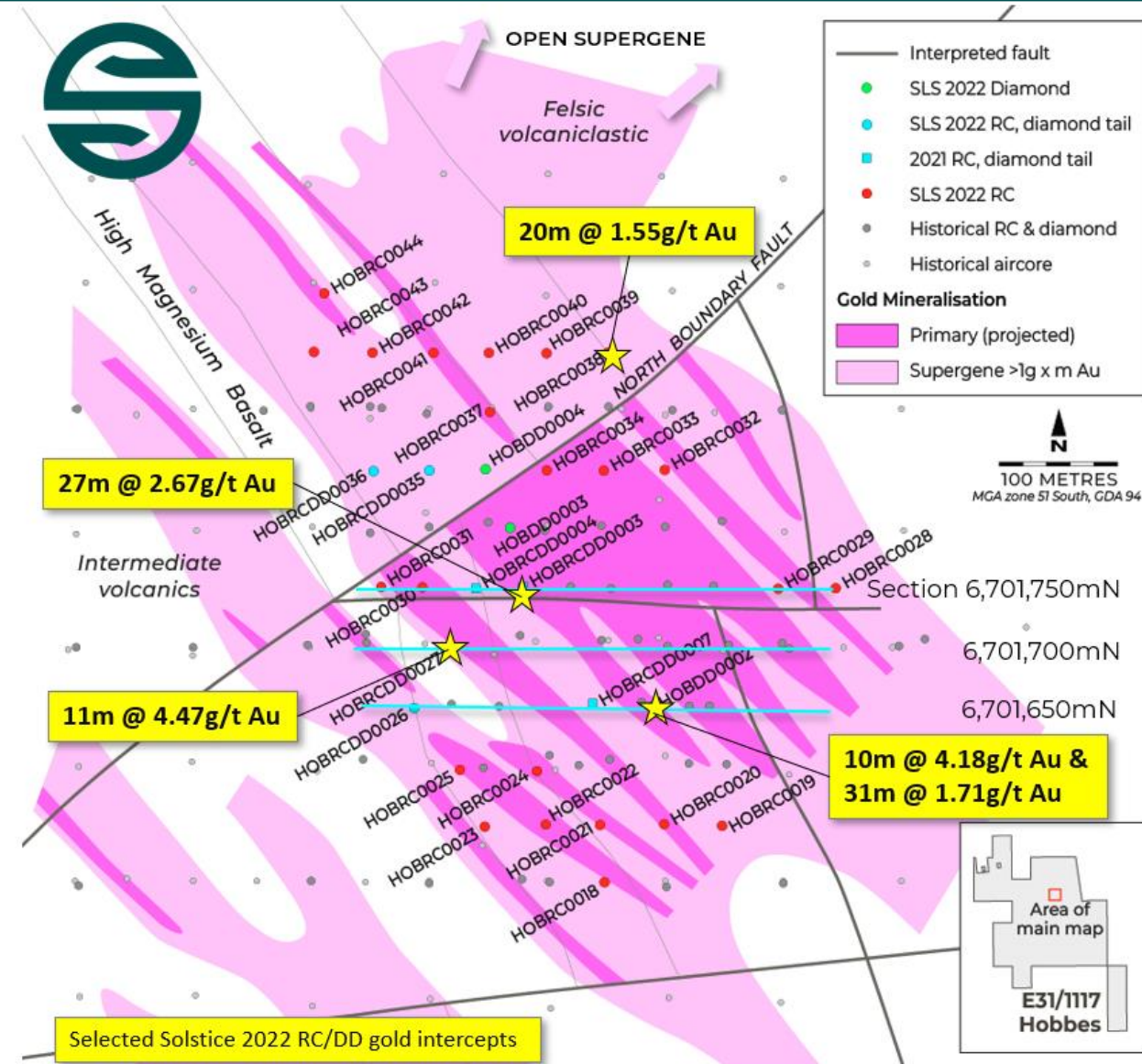
Recent RC and diamond drilling<sup>1</sup> has added confidence to core area of supergene mineralisation

Better intersections within the supergene include:

- 22m @ 3.22g/t gold from 45m (HOBRC0002)
- 20m @ 1.55g/t gold from 53m (HOBRC0038)
- 30m @ 1.08g/t gold from 47m (HOBRC0014)
- 17m @ 1.18g/t gold from 56m (HOBRC0032)
- 10m @ 4.18g/t gold from 78m (HOBDD0002)
- 12m @ 1.49g/t gold from 58m (HOBRC0001)

Supergene gold footprint remains open to northeast

1. ASX: ORR 05/02/2021, ASX: ORR 08/03/2021, ASX: SLS 08/09/2022, ASX: SLS 15/11/2022, ASX: SLS 21/12/2022



## Hobbes fresh rock mineralisation.

Primary mineralisation identified over >500m strike

West-dipping primary zones within fault block of altered intermediate volcanics

Parallel NW-striking zones with visible gold observed in thin quartz-carbonate veins

Strong primary drill intercepts<sup>1</sup>:

27m @ 2.67g/t gold from 113m (HOBRCDD003)

25m @ 2.52g/t gold from 87m (NHD002)

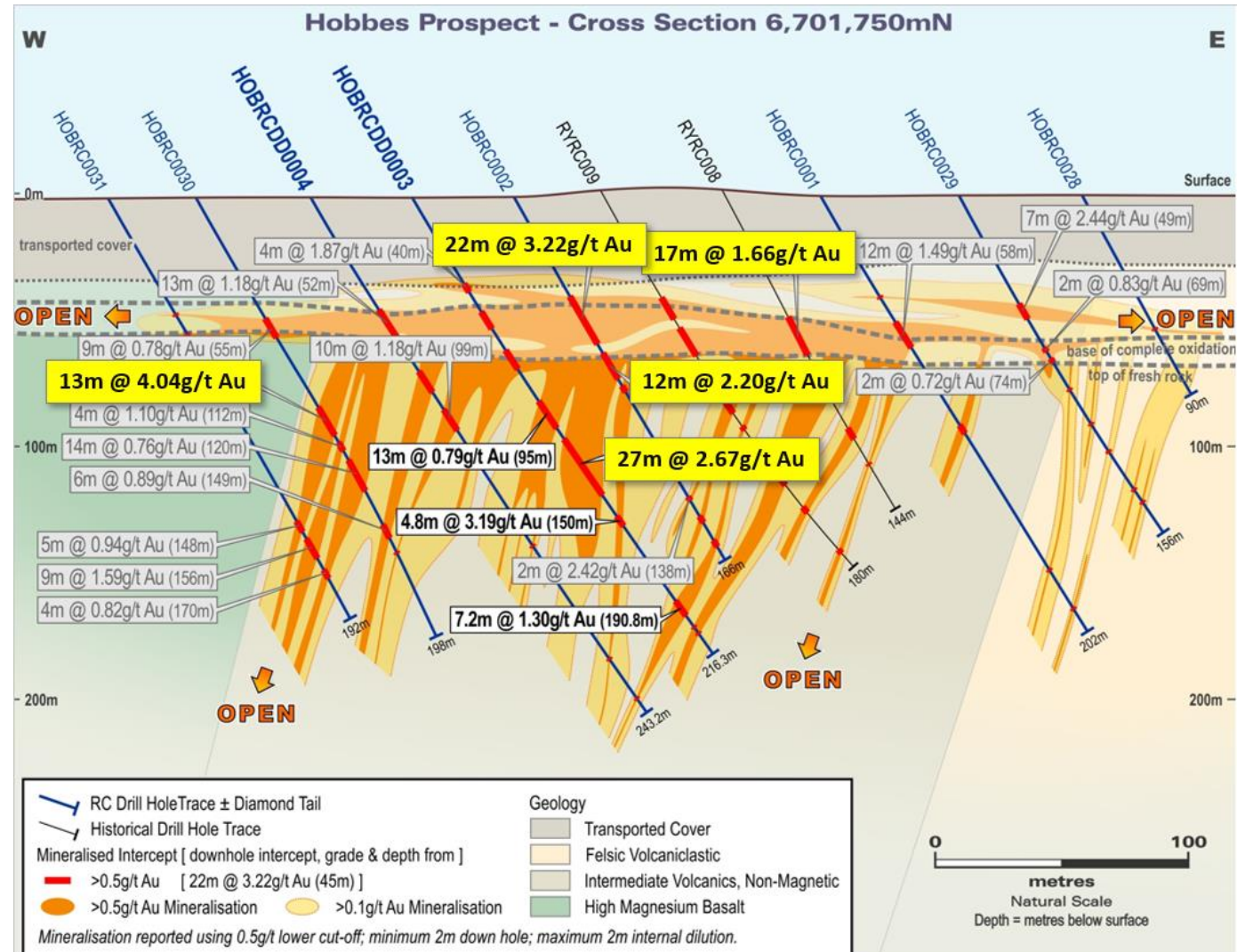
13m @ 4.04g/t gold from 96m (HOBRC0030)

11m @ 4.47g/t gold from 264m (HOBRCDD0027)

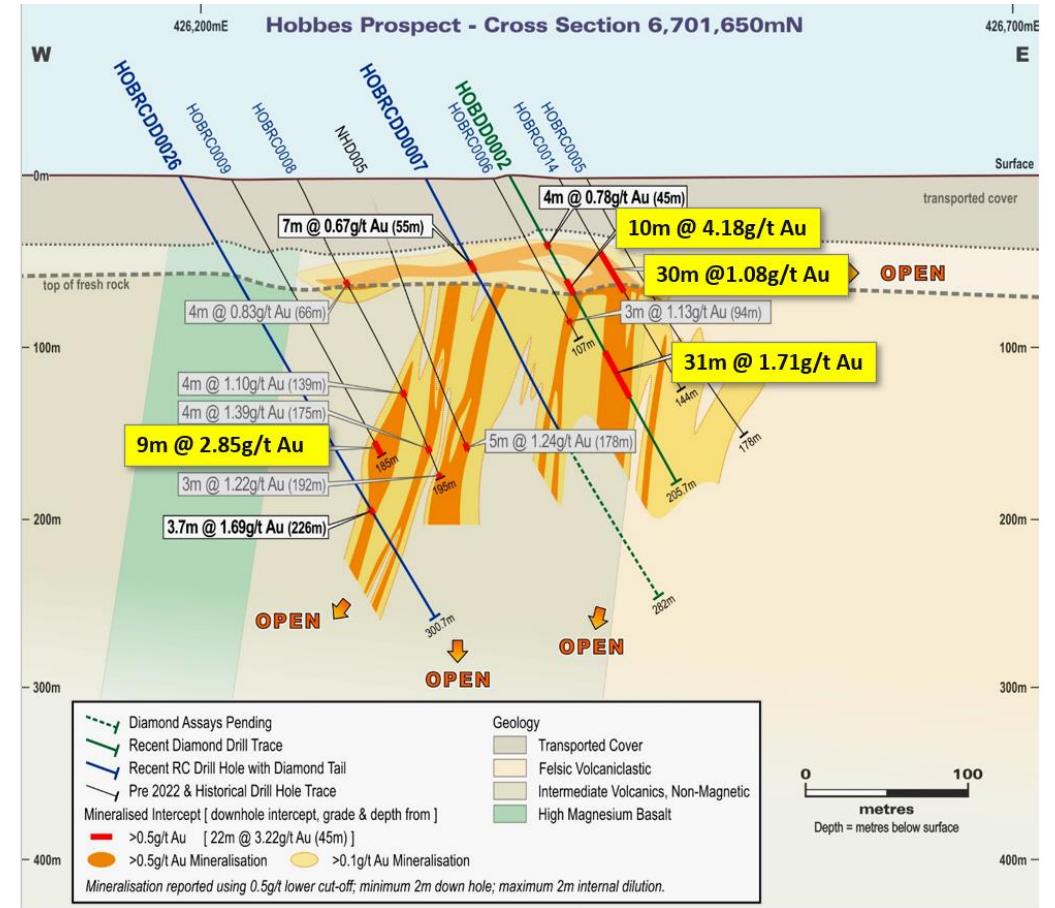
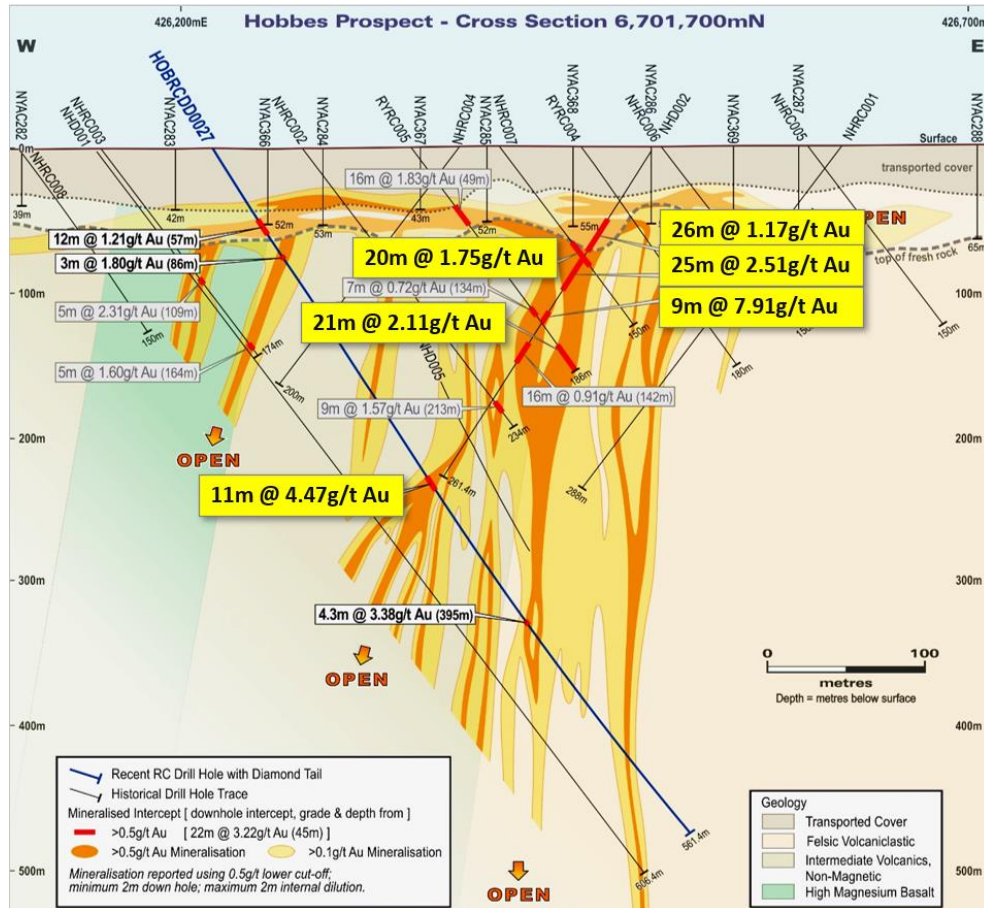
31m @ 1.71g/t gold from 118m (HOBDD0002)

Solstice's recent drilling delivered best hits to date - system open to depth

1. ASX: ORR 05/02/2021, ASX: ORR 08/03/2021, ASX: SLS 08/09/2022, ASX: SLS 15/11/2022, ASX: SLS 21/12/2022



## Hobbes - multiple zones of underlying fresh-rock mineralisation.



## Hobbes Gold Prospect metallurgy.

Favourable preliminary metallurgical testwork results<sup>1</sup> – 97% and 89% recovery for oxide and primary gold mineralisation, respectively

---

### Hobbes next steps:

Assessment of Hobbes Mineral Resource potential following successful RC and diamond drilling

---

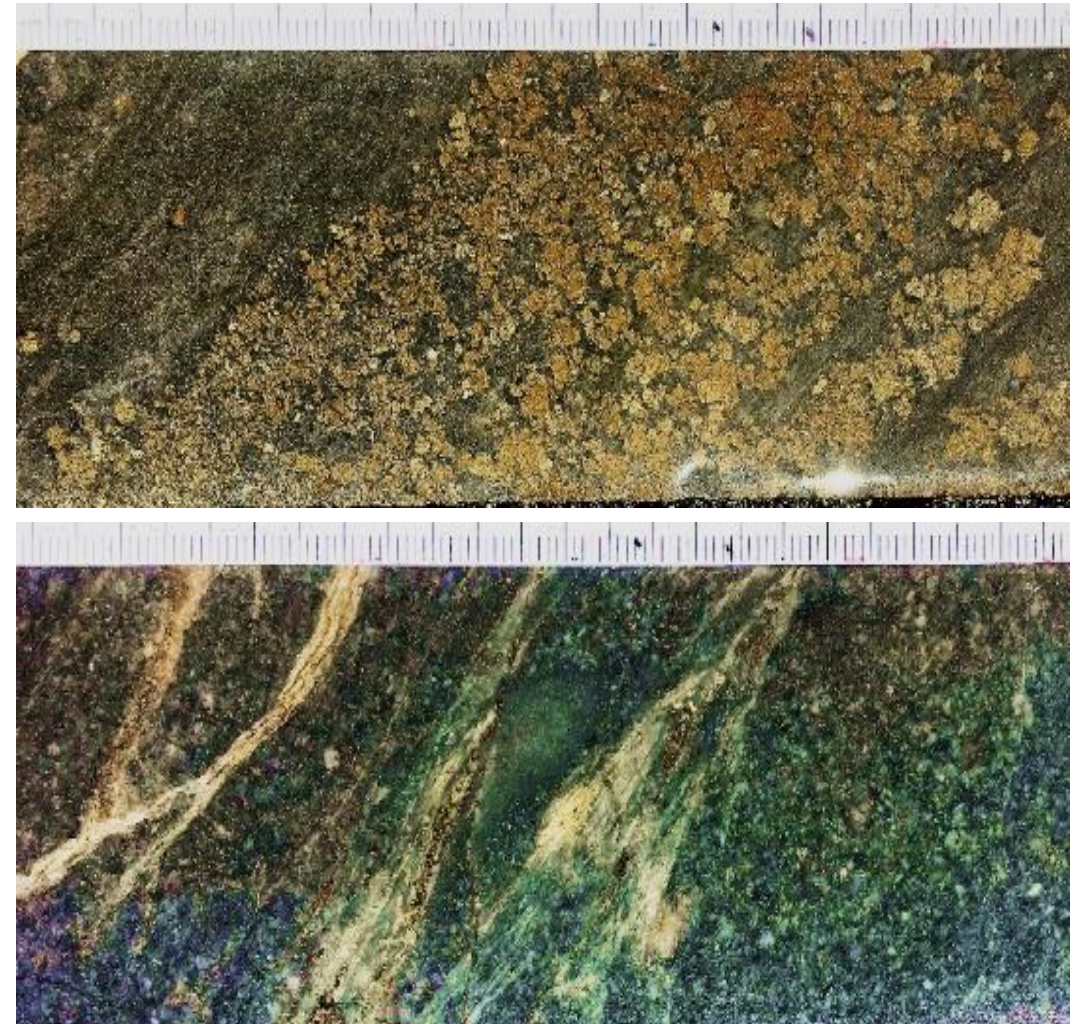
Apply new geological model to depth/strike targets

---

Aircore drilling of brownfield structural targets

---

Aircore drilling of 'lookalike' targets in wider Hobbes licence



1. ASX: ORR 17/12/2021



Yarri Regional.  
High quality pipeline gold  
and battery metals targets.

Over 100km strike of prime gold (+ lithium, rare earth elements [REE]) exploration tenure.

Data-led target generation & 'boots on ground', focus on gold and battery metals

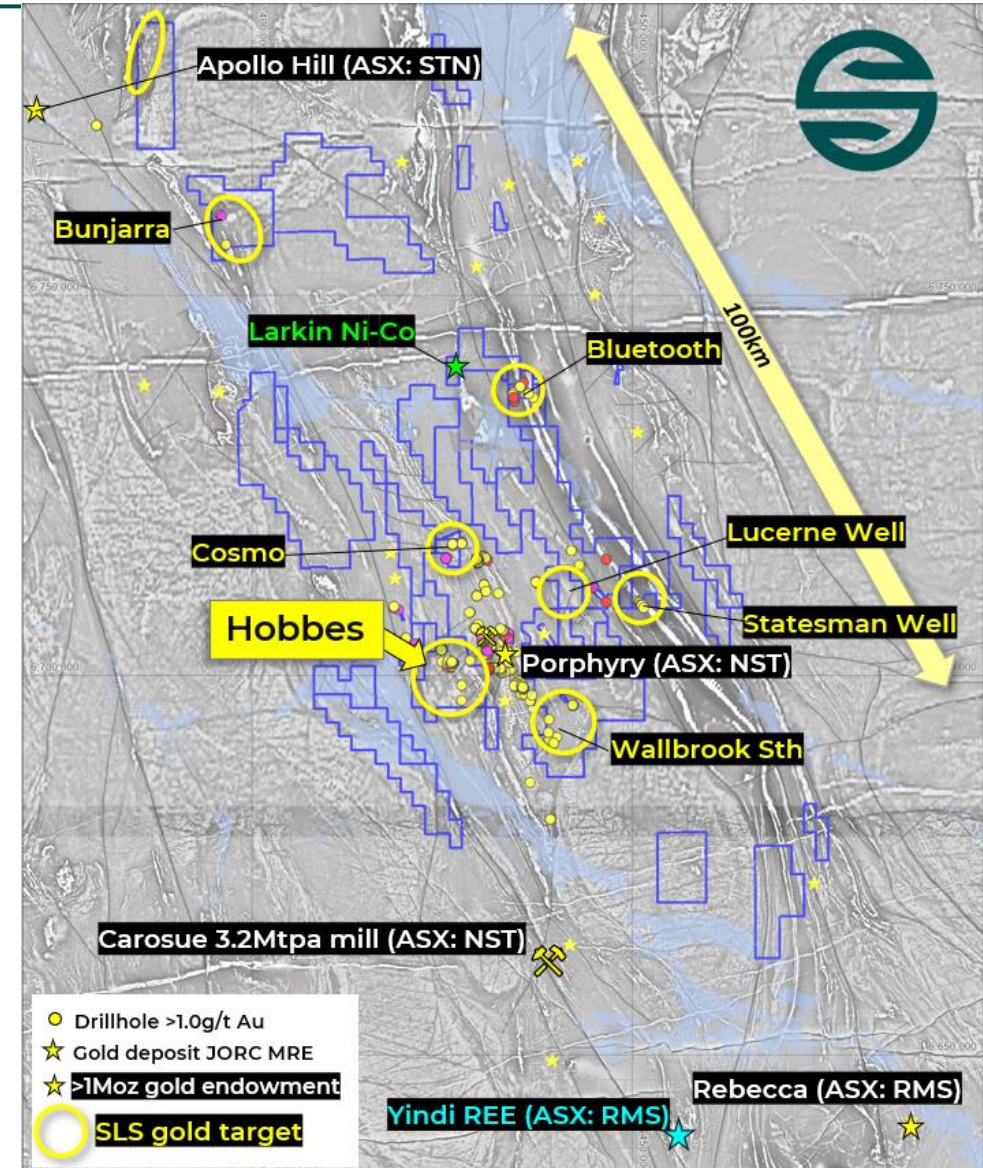
Multiple 100% owned prospects with >1.0g/t gold results<sup>1</sup> in historical drilling, compelling strike extension targets & untested structural positions

SLS team assembling historical information to ID and rank targets for aircore drilling – efficient first-pass tests in transported cover

Gold targets proximal to Hobbes; Cosmo, Wallbrook South - well placed for commercial outcome on discovery

What else is in the data? - geology permissive for lithium bearing pegmatite (numerous granitic plugs & proximal greenstones), REE's (enriched alkali intrusives), laterite nickel-cobalt (Larkin), VMS styles

1. For historical >1g/t gold drilling refer to ASX: ORR 8 February 2022 ("Exploration Update, Eastern Goldfields, Western Australia"), 14 March 2022 ("Prospectus"), ASX: ORR 15 March 2022 ("Demerger & IPO Presentation"), and ASX: ORR 26 March 2022 ("March 2022 Quarterly Activities Report"). For Yindi REE source: ASX: RMS 23/01/2023



## Bunjarra.

Excellent structural setting 15km from Saturn Metals' (ASX: STN) Apollo Hill deposit, STN Aquarius Prospect to south

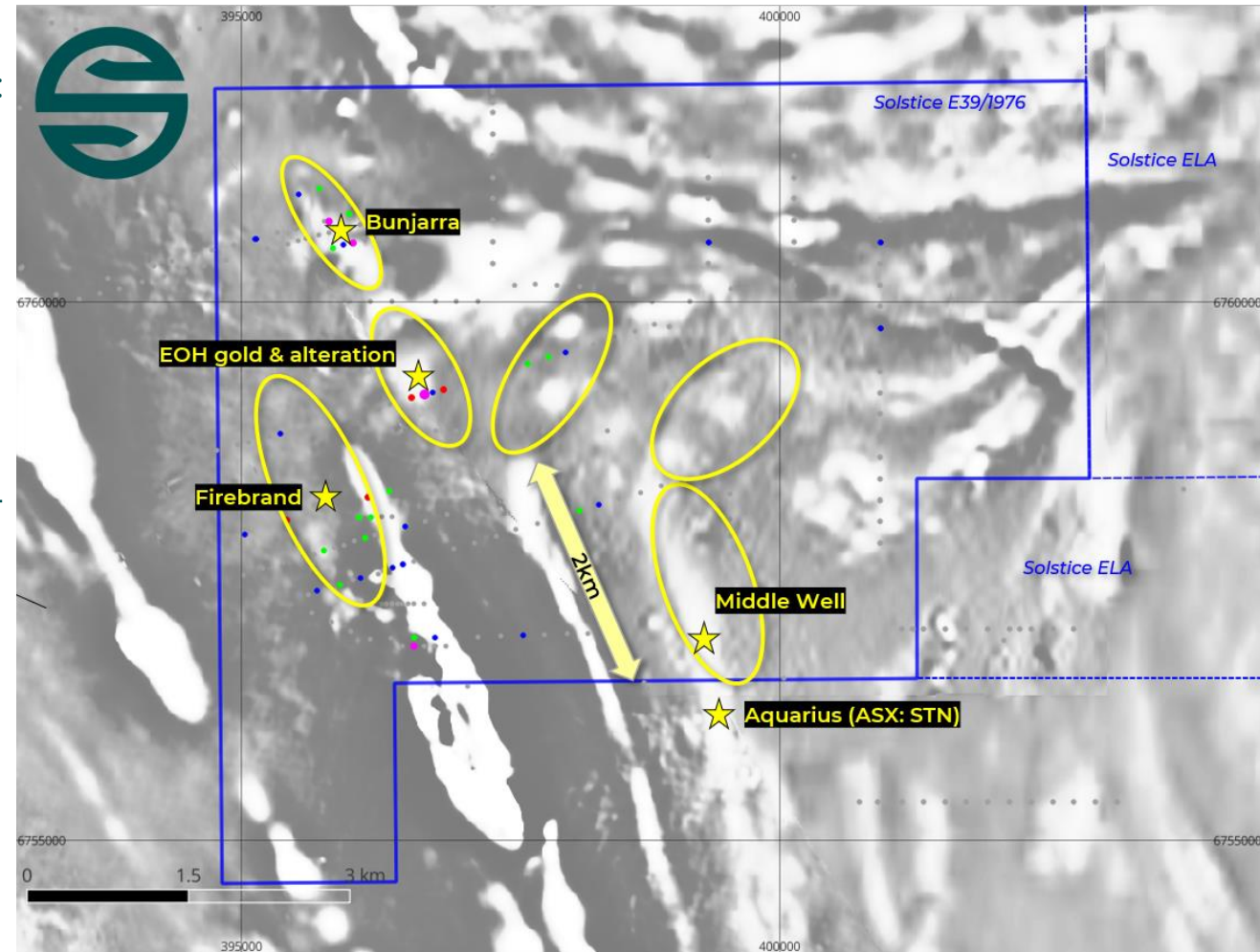
Series of >1km strike targets, all under alluvial cover, +1g/t gold anomalism in wide-spaced historical aircore drilling<sup>1</sup>

Historical drilling at Bunjarra Prospect has >100ppb gold over >900m strike, open to NW. Aircore results to 3m @ 5.35 g/t gold<sup>1</sup> (BWAC18-007)

Gold reporting to altered End of Hole (EOH) samples in multiple locations – leached weathering profile? No previous RC or diamond drilling

Primed for 2023 aircore drilling

1. For historical >1g/t gold drilling refer to ASX: ORR 8 February 2022 ("Exploration Update, Eastern Goldfields, Western Australia"), 14 March 2022 ("Prospectus"), ASX: ORR 15 March 2022 ("Demerger & IPO Presentation").



## Wallbrook South.

Large landholding in a compelling structural setting south of key Wallbrook-Porphyry trend, widespread alluvial cover

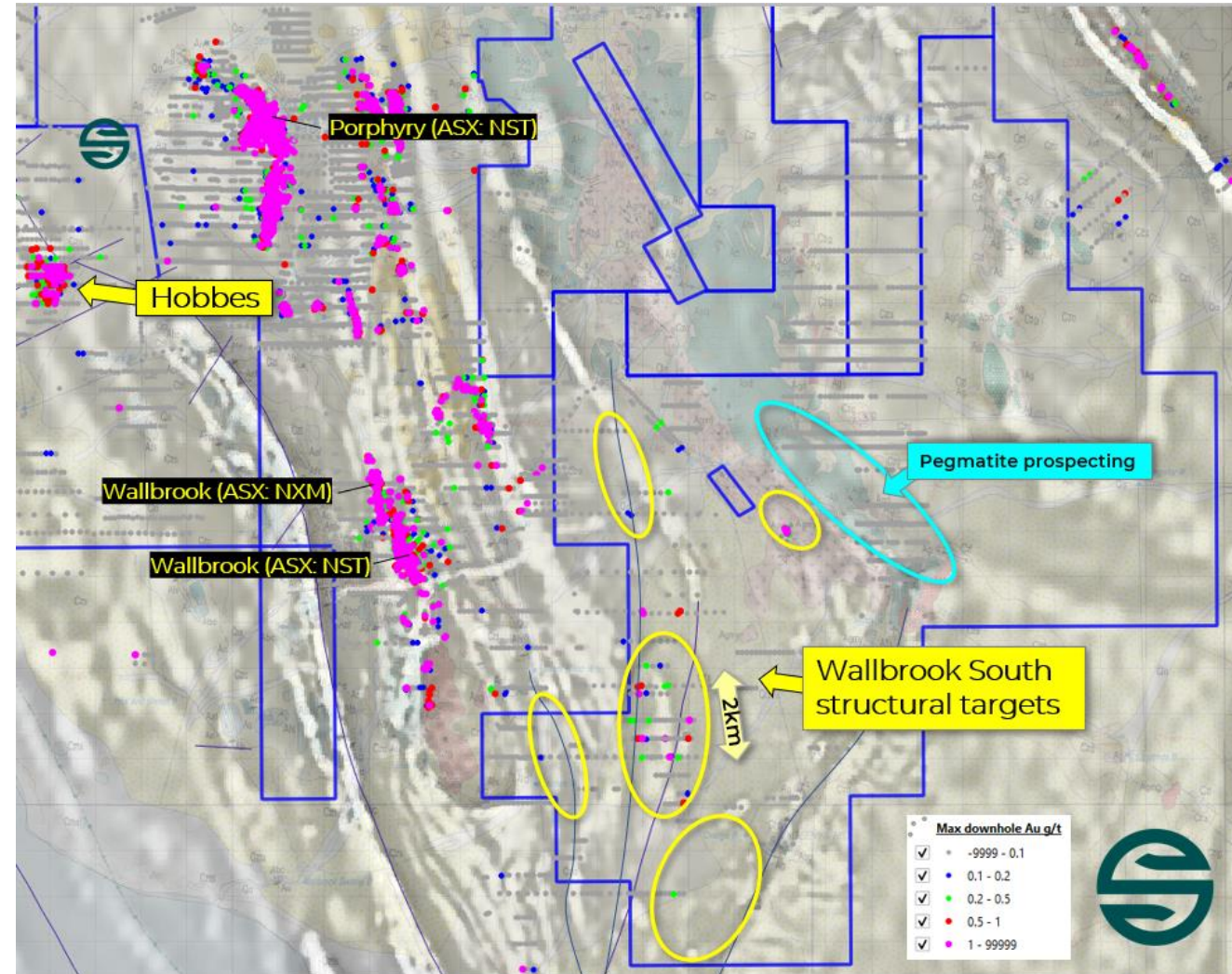
Strong Nth and NE structures only partly-tested by past aircore drilling

Widespread +1g/t gold intercepts in historical drilling<sup>1</sup>, piecemeal exploration history

Kilometer-scale greenfield gold structural targets to be ranked for first-pass aircore drilling

Field mapping and sampling underway in area permissive for lithium bearing pegmatites

1. For historical Max downhole gold drilling refer to WA DMIRS/Data and Software Centre/Statewide spatial datasets/Maximum grade in-hole drilling data 29 Sept 2021





## Cosmo group licenses.

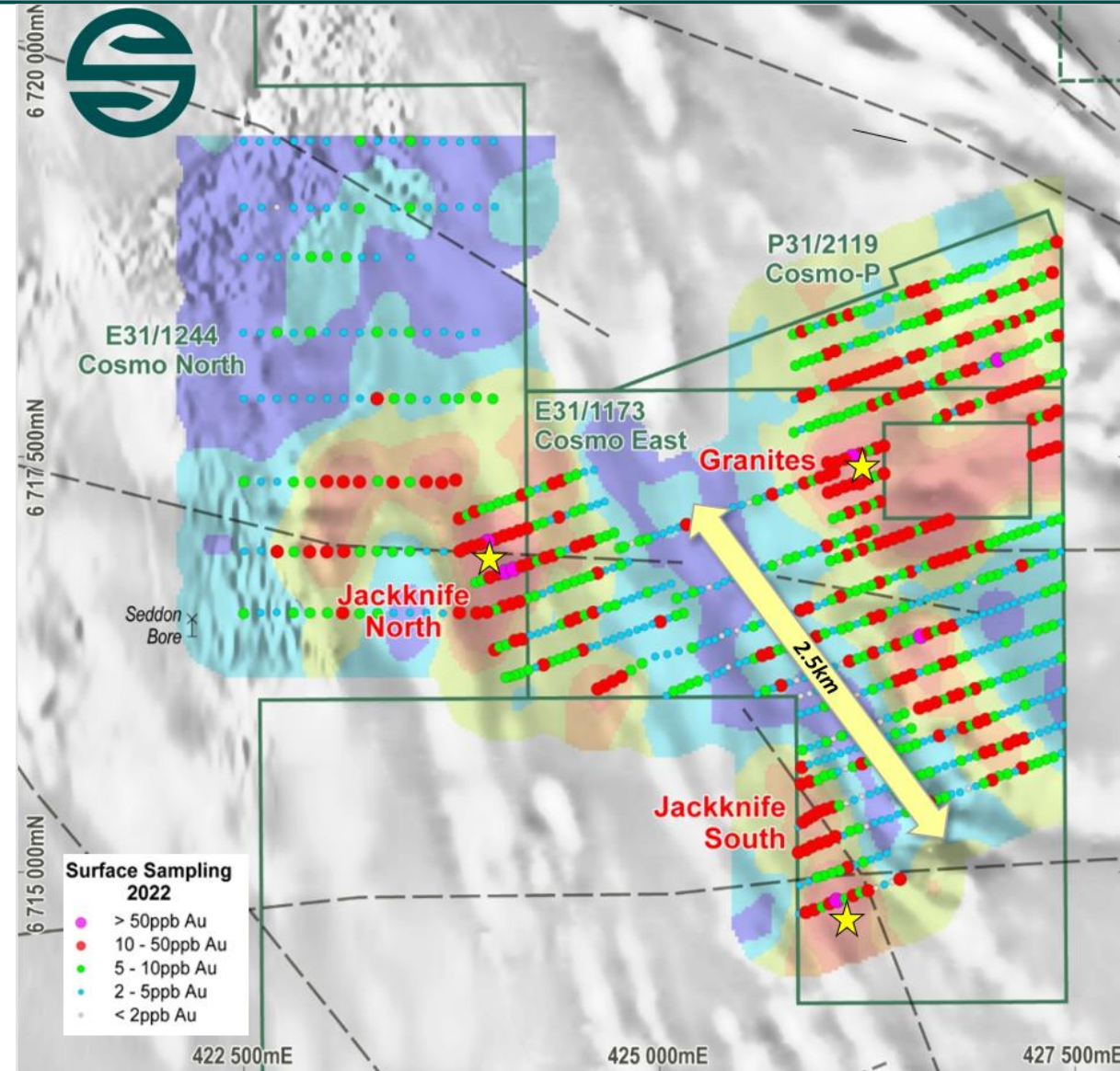
Surface gold anomalism approximately 15km NNW of Hobbes, on Wallbrook-Porphry trend (ASX: NST, ASX: NXM)

Recently identified gold-in-soil anomalies<sup>1</sup> at the Granites (peak 65ppb gold), Jackknife North (peak 100ppb gold) and Jackknife South (peak 81ppb gold) Prospects

Less than 10% of the areas tested by previous drilling

Extensive (3km x 0.9km) anomaly defined at Granites Prospect, majority of anomaly untested

1. ASX: SLS 30 August 2022 (“Gold Anomalies Defined by Soil Sampling at Cosmo Licences”)



## Battery Metals?

Manna Li pegmatite deposit (32Mt @ 1.0% Li<sub>2</sub>O<sup>1</sup>) (ASX: GL1) - 20km to south

Manna – a significant new lithium bearing pegmatite field discovered by field geology

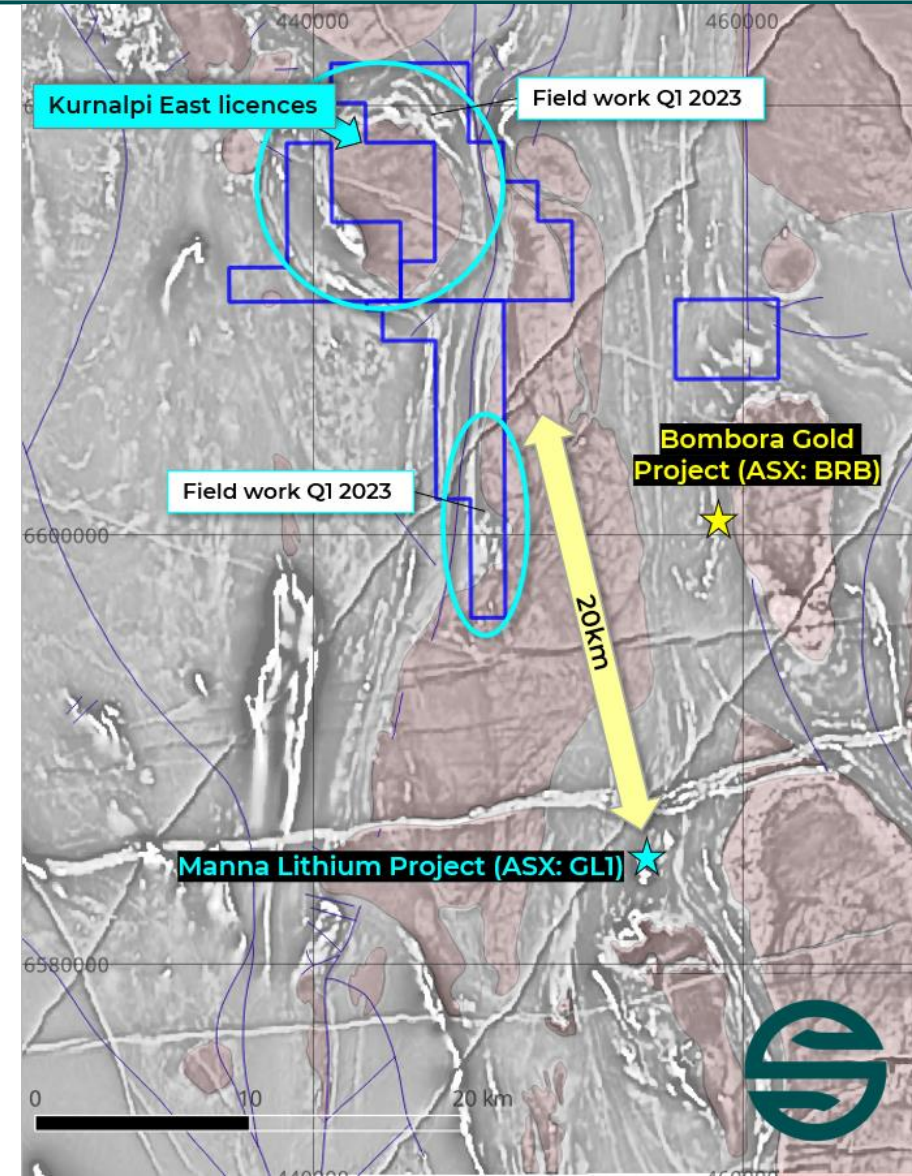
Permissive granite-margin geological settings seen throughout Solstice's Yarri Project tenure

No previous Li exploration on tenure, limited multi-element datasets i.e. 'blank canvas' for new exploration

Field mapping and sampling underway Kurnalpi East, Wallbrook South & other priority Yarri areas – similar geological settings to Manna



1. Source: ASX: GL1 15/12/2022



# Ponton Project. New frontier Gold



## Ponton Project.

Located 200km NE of Kalgoorlie in gneiss terrain

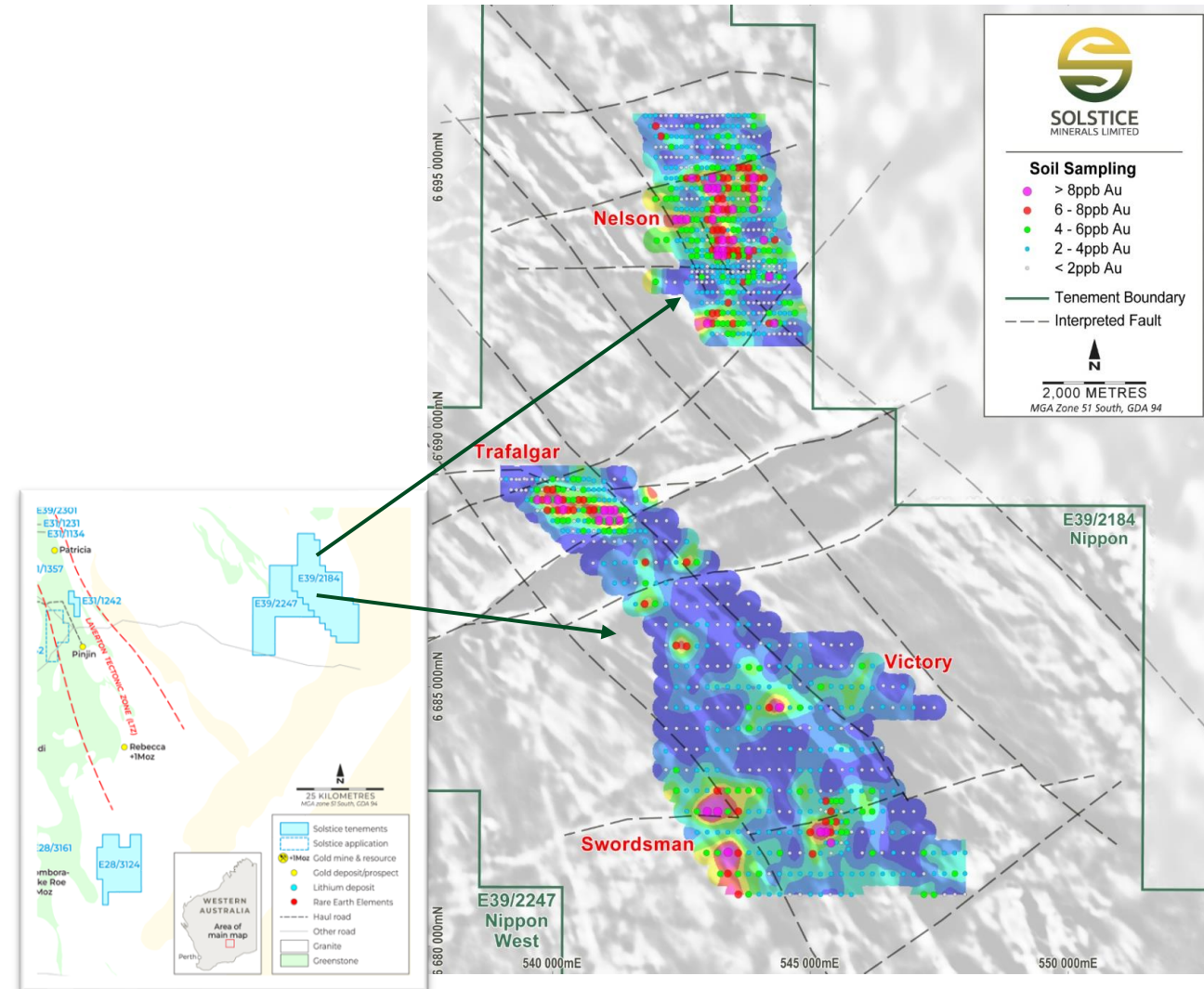
Largely unexplored, frontier opportunity at margin of Yilgarn Craton

Significant repeatable gold-in-soil anomalism<sup>1</sup> in aeolian sand country, anomalies coincident with underlying magnetic features

**Nelson** – 1.7km x 0.5km, peak 19ppb gold  
**Trafalgar** – 1.8km x 0.8km, peak 15ppb gold  
**Swordsman** – 1.1km x 0.5km, peak 11ppb gold

Areas of anomalism untested by previous drilling

1. ASX: SLS 14 July 2022 (“Significant Gold Anomalies Confirmed by Infill Soil Sampling at the Nippon Licence, Ponton Project”)



# Near term news flow and upcoming catalysts.



Hobbes Gold Prospect geological modelling, Mineral Resource assessment. Aircore drilling of lookalike targets



Ringlock Dam Nickel Sulphide follow-up results from recent diamond drilling



Regional: Numerous gold targets progress towards aircore drilling, advance understanding of Li REE and other metals potential

## SUMMARY

Extensive, prospective and hard to replicate ground package in Eastern Goldfields

---

Advanced Hobbes Gold Prospect – significant supergene and primary gold mineralisation approaching Mineral Resource status

---

Next door to existing infrastructure, offers commercial outcomes?

---

Exciting new targets near Hobbes

Established nickel sulphide mineralisation at Ringlock Dam provides second focus with open sulphide systems, and plunge targets

---

Pipeline of other exciting drill ready and greenfield gold and metals targets

---

Robust cash position allows corporate development opportunities



---

Thank you.