

Barton Gold

ASX:BGD

South Australia's
1.1 Moz Au Growth Platform

22 March 2023 | Swiss Mining Institute Conference

Perseverance Mine, Tarcoola Project



Important Notices

Disclaimer

This document has been approved by the Board of Barton Gold Holdings Limited (ACN 633 442 618) (together with its affiliates, "Barton" or the "Company") and has been prepared for the exclusive use of the party to whom Barton delivers this document (the "Recipient"). The information contained in this document has been prepared in good faith by Barton. However, no representation or warranty, either express or implied, is made as to the accuracy, completeness, adequacy or reliability of the information contained in this document. This document contains only a synopsis of more detailed information in relation to the matters described herein and accordingly no reliance may be placed for any purpose whatsoever on the sufficiency or completeness of such information as presented herein. This document should not be regarded by the Recipient as a substitute for the exercise of its own judgment and the Recipient should conduct its own due diligence in respect of the contents of this document. To the maximum extent permitted by law Barton, its directors, officers, employees, advisers, agents and related bodies corporate ("Barton Gold Group") disclaim any or all liability for any loss or damage which may be suffered by any person as a result of the use of, or reliance upon, anything contained within or omitted from this document (regardless of whether the loss or damage arises in connection with any negligence, default, lack of care or misrepresentation by the Barton Gold Group or any other cause in connection with the provision of this document or the purported reliance on this document or the information contained in it). To the extent that any provisions in this Important Notices section may be construed as being a contravention of any law of the State or the Commonwealth, such provisions should be read down, severed or both as the case may require and the remaining provisions shall continue to have full force and effect.

This document has been prepared solely for informational purposes. This document does not constitute a prospectus and is not to be construed as a solicitation or an offer to buy or sell any securities, or related financial instruments, in any jurisdiction. The Recipient should not construe the contents of this document as legal, tax, accounting or investment advice or a recommendation. This document does not purport to contain all of the information a Recipient would require to make an informed decision whether to invest in the Company. Specifically, this document does not purport to contain all the information that investors and their professional advisers would reasonably require to make an informed assessment of the Company's assets and liabilities, financial position and performance, profits, losses and prospects. The Recipient must not rely on the information set out in this document and must make its own independent assessment and consult its own legal counsel, tax and financial advisors concerning any matter described herein. This document does not purport to be all-inclusive or to contain all of the information that the Recipient may require. No investment, divestment or other financial decisions or actions should be based solely on the information in this document. The distribution of this document may be restricted by law in certain jurisdictions.

This document must be treated as strictly confidential and must not be copied, reproduced, distributed, quoted, referred to or distributed to others at any time, in whole or in part, without the prior written consent of Barton.

Cautionary Statement Regarding Forward-Looking Information

The figures, valuations, forecasts, estimates, opinions and projections contained herein involve elements of subjective judgment and analysis and assumption. Barton does not accept any liability in relation to any such matters, or to inform the Recipient of any matter arising or coming to the company's notice after the date of this document which may affect any matter referred to herein. Any opinions expressed in this material are subject to change without notice, including as a result of using different assumptions and criteria. This document may contain forward-looking statements. Forward-looking statements are often, but not always, identified by the use of words such as "seek", "anticipate", "believe", "plan", "expect", "target" and "intend" and statements that an event or result "may", "will", "should", "would", "could", or "might" occur or be achieved and other similar expressions. Forward-looking information is subject to business, legal and economic risks and uncertainties and other factors that could cause actual results to differ materially from those contained in forward-looking statements. Such factors include, among other things, risks relating to property interests, the global economic climate, commodity prices, sovereign and legal risks, and environmental risks. Forward-looking statements are based upon estimates and opinions at the date the statements are made. Barton undertakes no obligation to update these forward-looking statements for events or circumstances that occur subsequent to such dates or to update or keep current any of the information contained herein. Any estimates or projections as to events that may occur in the future (including projections of revenue, expense, net income and performance) are based upon the best judgment of Barton from information available as of the date of this document. There is no guarantee that any of these estimates or projections will be achieved. Actual results will vary from the projections and such variations may be material. Nothing contained herein is, or shall be relied upon as, a promise or representation as to the past or future. Any reliance placed by the Recipient on this document, or on any forward-looking statement contained in or referred to in this document will be solely at the Recipient's own risk. The Barton Gold Group expressly disclaims any and all liability relating or resulting from the use of all or any part of this document or any of the information contained herein.

Date and Currency

This document is dated 22 March 2023 ("Preparation Date") and is based on the Company's prospectus dated 14 May 2021 ("Prospectus") for an offer to acquire fully paid ordinary shares ("Shares") in the capital of the Company ("Offer"), updated for the results of the Offer, and Barton ASX announcements as from the date of the Prospectus. A copy of the Prospectus is available for download at www.bartongold.com.au or www.asx.com.au. The delivery of this document at any time after the Preparation Date does not imply the information contained in it is correct at any time after the Preparation Date. Delivery of this document does not imply, and is not to be relied upon as a representation or warranty that: (i) there has been no change since the Preparation Date in the business, operations, financial condition, prospects, creditworthiness, status or affairs of the Company or any of the Company's related bodies corporate or affiliates; or (ii) the information contained in this document remains correct and not misleading at any time after the Preparation Date. The information in this document should be considered dynamic and may change over time. Subject to its obligations at law, Barton has no responsibility or obligation to update this document or inform the recipient of any matter arising or coming to their notice after the Preparation Date which may affect any matter referred to in the document. All dollar values expressed in this document are Australian dollars (\$, A\$, or AUD).



Leveraging Strategic Assets

Strategic 'First Mover' Advantage
Re-Opening a Proven Gold District



Strategic Regional Position in Gawler Craton

- South Australia: 25% of AUS gold, 2.5% of production ⁽¹⁾
- ~5,100km² underexplored tenements and JV gold rights
- ~1.1Moz Au JORC (2012) Mineral Resources and ownership of the region's only gold mill ⁽²⁾



Significant Upside Opportunity

- Tier 1 jurisdiction → geology, industry, legal
- Aggressively drilling out new gold zones
- **Multi-Million Ounce growth potential**



Excellent Corporate Platform

- Clear potential, strategy, infra advantages
- **\$8.85m cash, with sources of income** ⁽³⁾
- Proven operational and leadership teams



¹ Government of South Australia – Dept for Energy & Mining, Geoscience Australia

² Refer to Barton Prospectus and ASX announcement dated 14 October 2021

³ As at 31 December 2022; refer to Barton ASX announcement dated 27 January 2023



Corporate Ambition

Leverage Platform to Long-Term Gold Leadership



Aiming Big

- **Ambition to build initial +2Moz Au Resources base and be SA's largest independent producer (150kozpa) in 5 years**
- Major local mining district (BHP, OZ Minerals, Peak Iron, etc)
- **Tarcoola + Tunkillia = 3,000km² + 100km shears + 1Moz Au**
- Focus on open pit scale = easier to find, more efficient to mine



Stage 1: Leverage Our Mill for Low-Risk Startup

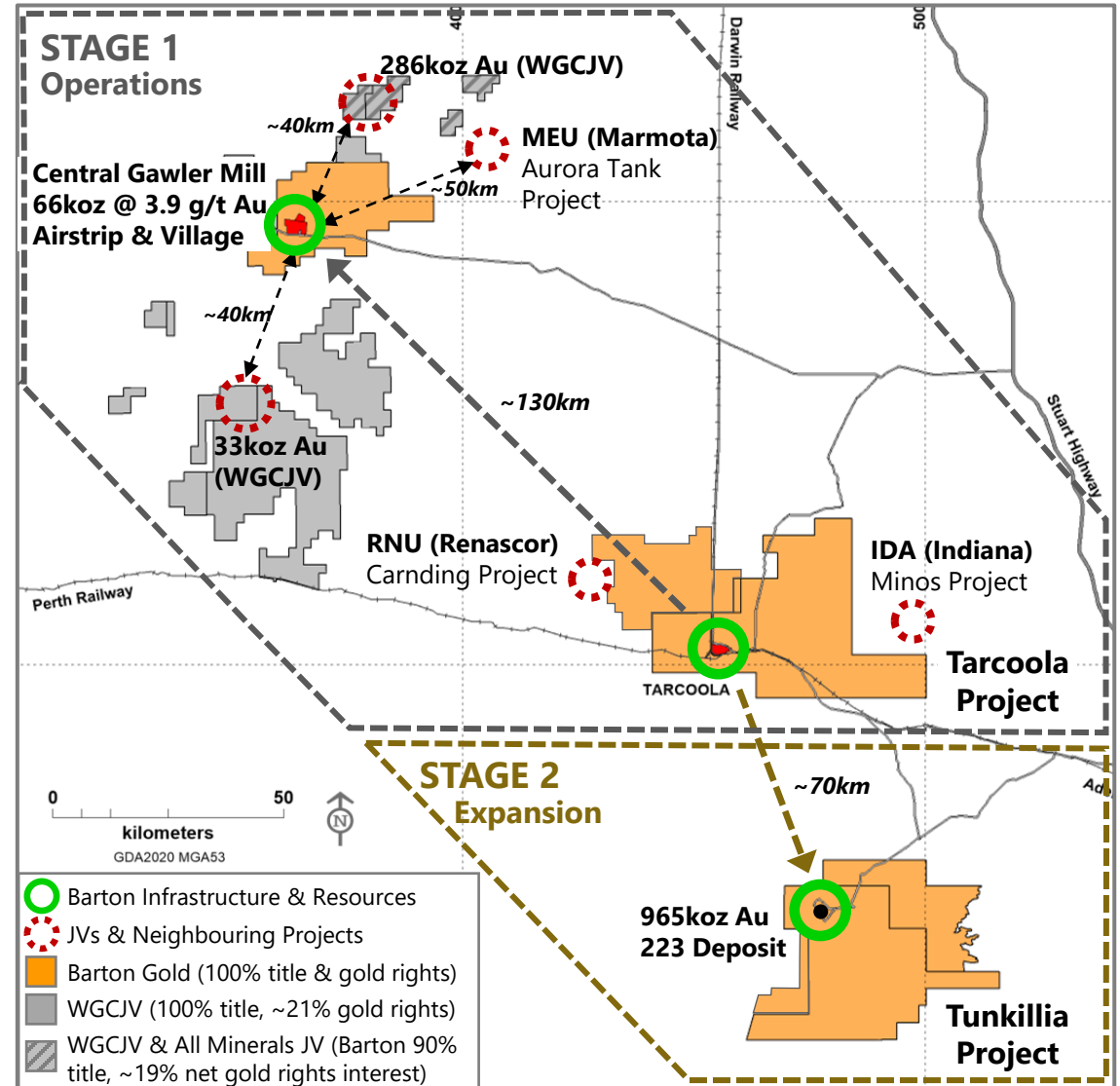
- Tarcoola higher-grade mineralisation → Central Gawler Mill
- Generate free cash flow to fund Stage 2 Expansion
- **Permitted MLs with proven infra / logistics / metallurgy** ⁽¹⁾
- **Toll milling option:** 319koz Au and regional projects nearby ⁽¹⁾



Stage 2: Expansion to Large-Scale Production

- New mill at Tunkillia fed by bulk open pit operations
- Tarcoola high-grade mineralisation → new Tunkillia mill
- **Focus on efficiencies of scale in operations and processing**
- Opens Central Gawler Mill → consolidation and / or toll milling

¹ Refer to Prospectus





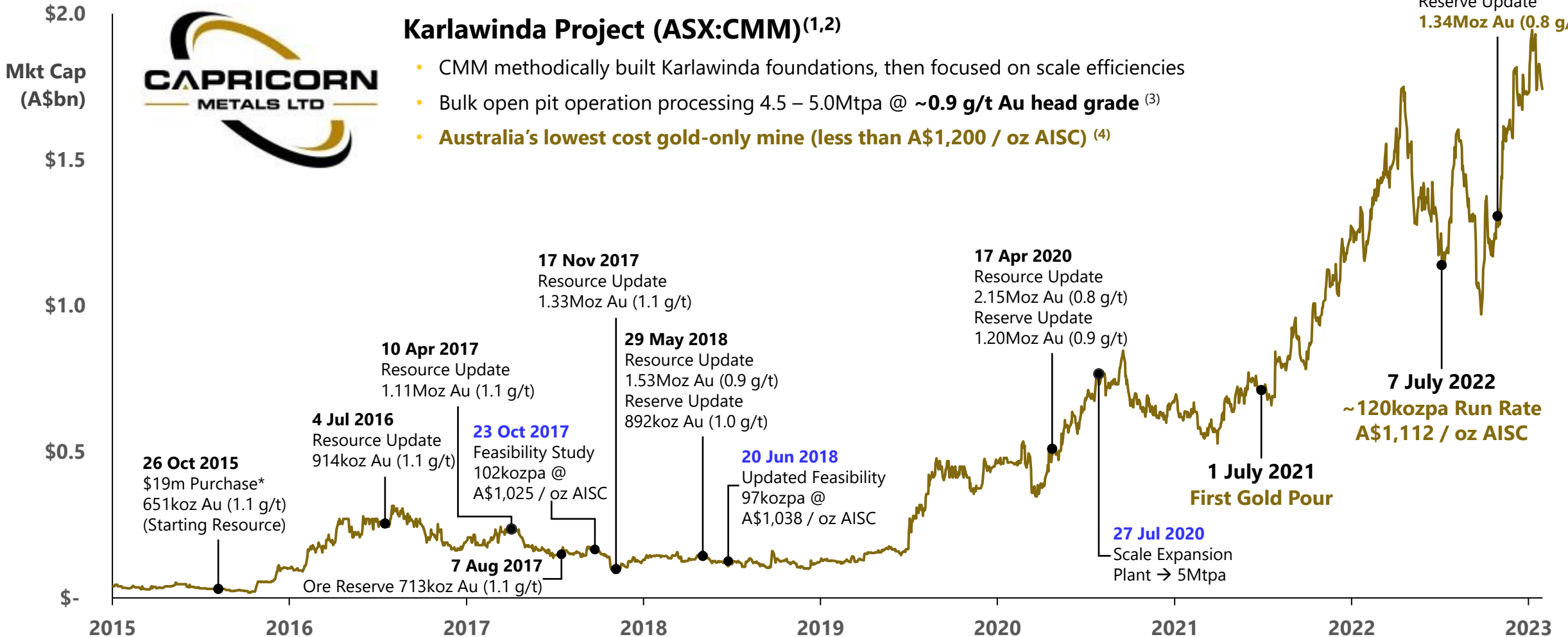
Our Heroes

Proving the case for large-scale, lower-grade open pit operations



Karlawinda Project (ASX:CMM)^(1,2)

- CMM methodically built Karlawinda foundations, then focused on scale efficiencies
- Bulk open pit operation processing 4.5 – 5.0Mtpa @ ~0.9 g/t Au head grade ⁽³⁾
- **Australia's lowest cost gold-only mine (less than A\$1,200 / oz AISC) ⁽⁴⁾**



Notes:

* Based upon CMM price of \$0.11 per share (as adjusted) on 26 Oct 2015

1 As at 7 Feb 2023, for each event refer to CMM ASX Announcements of the same date;

Market capitalisation based upon 7 Feb 2023 shares outstanding and daily historical CMM price

2 All \$ figures are AUD; AISC = All In Sustaining Cost; figures subject to rounding

3 Refer to CMM ASX Announcement dated 30 January 2023

4 Aurum Analytics – Australian & New Zealand Gold Operations (September Quarter 2022)



Building Momentum

Applying new technologies and adapting tools to gain competitive advantage and rapidly accelerate regional discovery and development

Efficient uses of capital leveraging large infra / asset platform, with cash burn only ~A\$1m / Qtr, and majority of cash going to exploration

Significant early success and value created in exploration, asset monetisation, and corporate initiatives **since IPO (June 2021):**



4 new gold zones
(+2km new strike) ⁽¹⁾



\$975k grants
from SA Government ⁽³⁾



\$4.7m additional cash gained
through non-dilutive measures ⁽²⁾



+30,000m
drilled + geophys programs

Barton is methodically laying the foundations for large-scale gold development in SA's central Gawler Craton

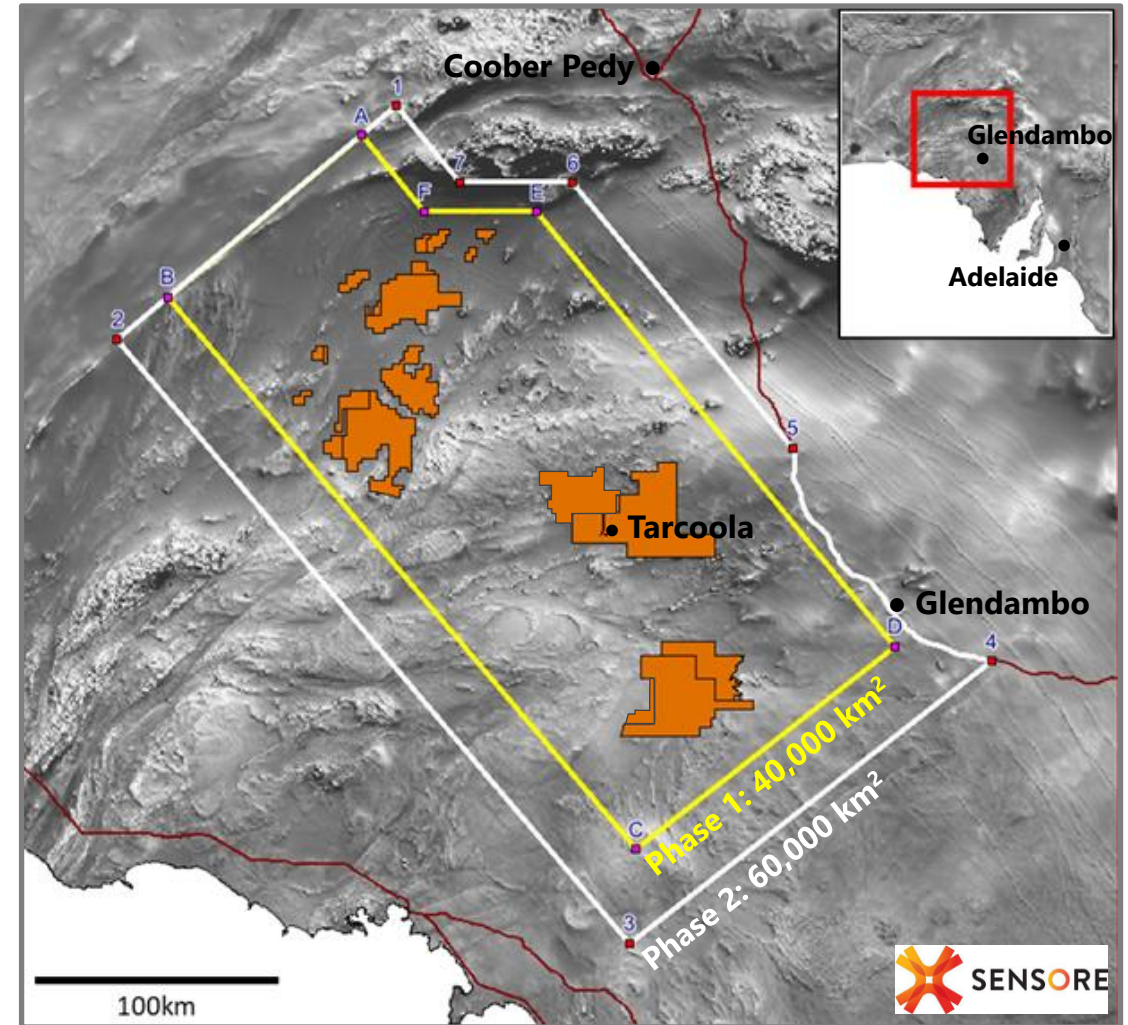
1 Refer to Prospectus and ASX announcements dated 27 Oct and 3 / 8 / 15 Nov 2021, and 5 Sep 2022

2 Refer to ASX announcements dated 28 / 30 Jun, 26 Sep, 25 Oct and 11 Nov 2022 and FY 2022 / 2023 Appendix 5Bs

3 Refer to ASX announcements dated 4 Aug and 7 Dec 2021, and 15 Jun 2022

4 Refer to ASX announcements dated 13 Sep and 7 Dec 2021, and 17 Jan, 2 May and 14 Jul 2022

Laying Solid Foundations for Long-Term Value



Barton Gold / SensOre Ltd Strategic Gawler Craton R&D Partnership Refining AI & ML Predictive Targeting Engine over ~60,000km² Area

* Refer to ASX announcement dated 21 Mar 2022



Capital Snapshot

Deep Value & Strong Alignment with Shareholders

Capital Structure (AUD \$)

Shares on Issue ⁽¹⁾	175,990,593
Market Cap (\$0.215 / share) ⁽²⁾	\$37.8m
Cash ⁽³⁾	\$8.85m
Enterprise Value ⁽⁴⁾	\$29.0m
Options on Issue ⁽¹⁾	18,582,266

1 Refer to ASX announcements dated 15 Mar 2023; ~60% shares and ~51% options escrowed (28 June 2023)

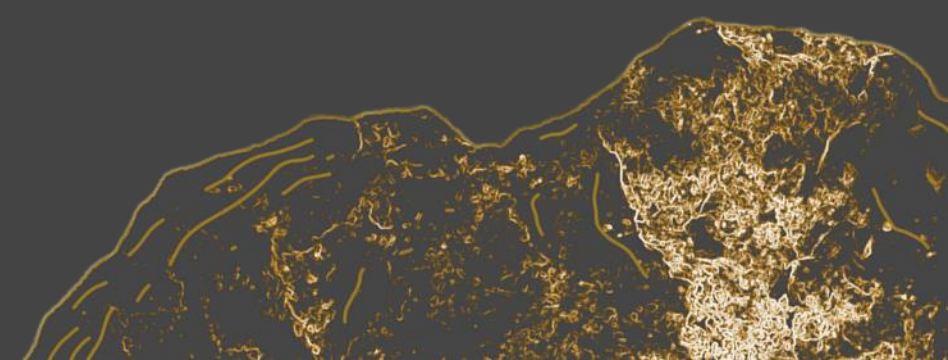
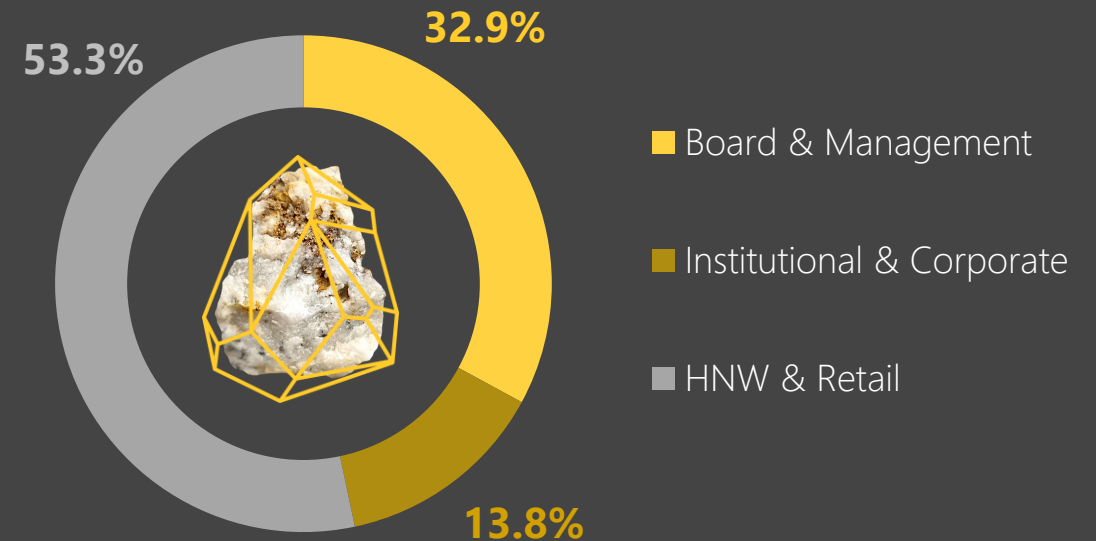
2 Market Capitalisation as at market close on Monday, 13 March 2023

3 As at 31 December 2022; refer to ASX announcement dated 27 January 2023

4 Based upon market cap less cash and nil debt. Subject to rounding

5 Estimate based upon Company analysis

Share Distribution ⁽⁵⁾





Leadership

Strong SA & Gold Pedigree

Board of Directors



Ken Williams

Non-Executive Chairman

- +30 years' experience in Australian resources, aviation and financial services
- Formerly Treasurer and CFO for Normandy Mining (Newmont Australia)



Alexander Scanlon

Managing Director & CEO

- ~20 years' experience in principal investments, of which ~15 in resources
- Founder of Barton Gold and previously MD of PARQ Capital Management



Christian Paech

Non-Executive Director

- Lawyer with +25 years' experience in private and public / commercial practice
- Formerly General Counsel and Company Secretary of ASX-listed Santos Ltd



Graham Arvidson

Non-Executive Director

- Mechanical engineer with +15 years' experience in key project leadership roles
- Development and operations specialist, CEO of Australian Vanadium Limited



Neil Rose

Non-Executive Director

- Chartered accountant focused on commercial property and resources
- Founding Director of Barton Gold and a Director of Tribar Capital

Key Management



Nicholas Byrne

Chief Financial Officer

- CPA with ~30 years' resources and engineering sector experience
- ~20 years South Australian experience including as CFO of Heathgate Resources



David Wilson

GM Projects

- Surveyor with +40 years' experience in survey, mine and project management
- Formerly Chief Surveyor & Tech Services Super for Normandy and Newmont



Marc Twining

Exploration Manager

- Geologist with +25 years' experience in resources exploration and development
- Formerly exploration geologist with gold majors Normandy and Newmont



Ian Garsed

Principal Geologist

- Geologist with +25 years' experience in resources discovery and definition
- Extensive South Australian gold and IOCG mineralisation experience



Shannon Coates

Company Secretary

- Qualified lawyer and Chartered Secretary with +25 years' experience
- Company Secretary to multiple ASX-listed companies



Tunkillia 1Moz Au Growth Platform

Building Out Large Scale Mineralisation

Large-scale baseload mineralisation to support 'Stage 2' Expansion

3 new gold zones identified since Nov 2021 add ~2km new gold mineralisation (2)

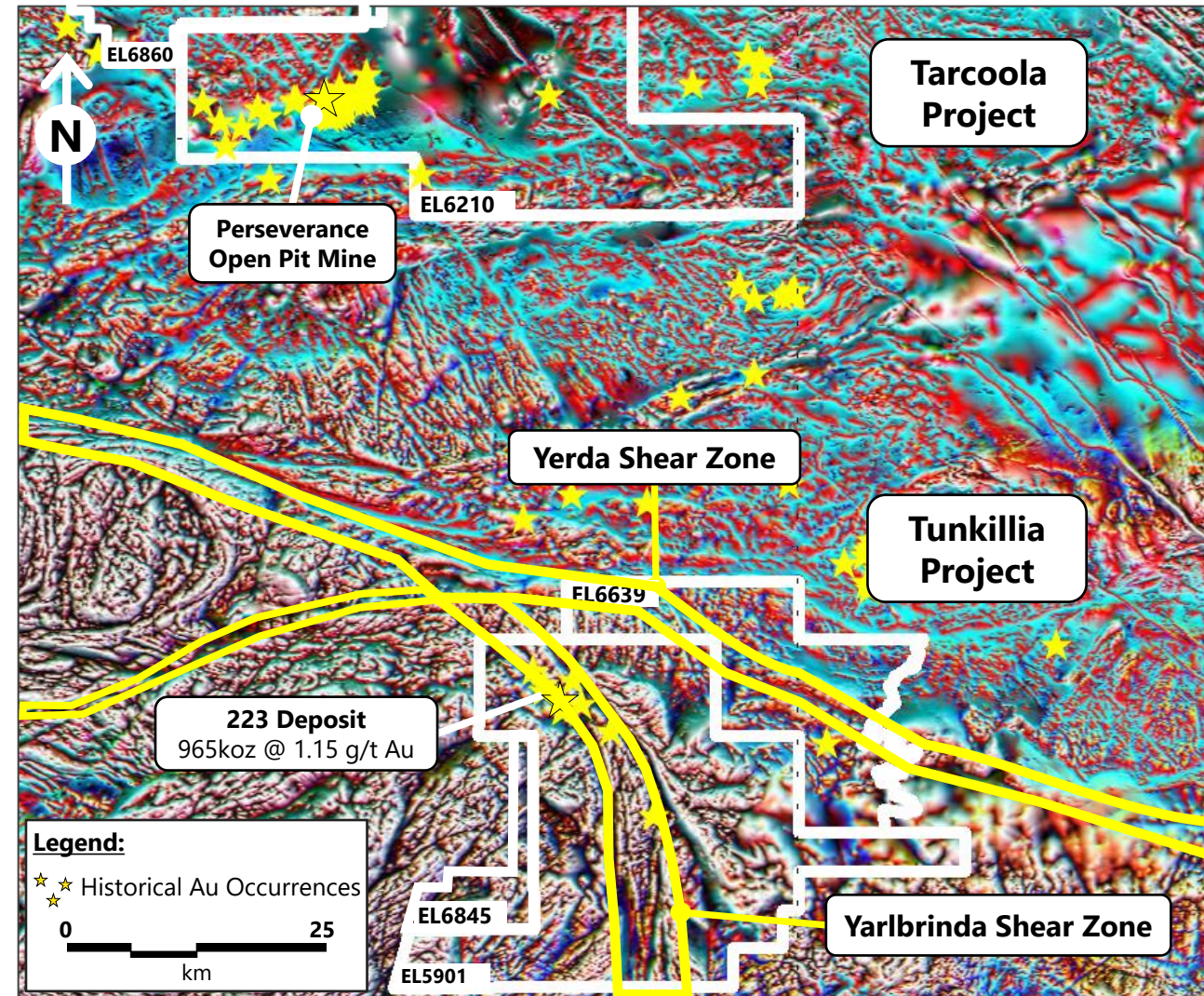
~1,360km² contiguous tenement package on ~50km of historically poorly-tested, major shear zone systems (1)

965koz Au JORC Resource in current '223 Deposit' (1)

- 26.1Mt @ 1.15 g/t Au (~68% Indicated)
- New ~250m long higher-grade central zone (3)

District-scale growth potential with 20km+ untested shear zone strike

Targeting several stages of growth in 223 Deposit and key satellite gold zones



1 Refer to Prospectus and ASX announcement dated 3 October 2022

2 Refer to ASX announcements dated 3 / 8 / 15 Nov 2021, and 5 Sep 2022

3 Refer to Prospectus and ASX announcement dated 15 Nov 2021

Tunkillia Expanding Rapidly

Systematically Building Foundation for Scale Growth & Development



Significant upside potential evident in / around 223 Deposit

- ~2.5km long with mineralisation open to depth and along strike ⁽¹⁾
- Most drilling completed 1996 - 2008 (USD \$300 - 800 / oz gold)
- Oct 2020: Updated MRE **grows over 70% to 965koz Au** ⁽¹⁾
- Nov 2021: **Central higher-grade zone** (incl 17m @ 4.3 g/t Au) ⁽²⁾
- Sep 2022: **New Area 51 gold zone** (incl 17m @ 3.2 g/t Au) ⁽³⁾
- Jan 2023: Confirmed **new 20m+ thick mineralised zones below MRE** ⁽⁴⁾



Gold endowment broader than previously recognised;

223 Deposit is likely part of a much larger overall mineral footprint, with significant zones of new mineralisation in poorly tested areas



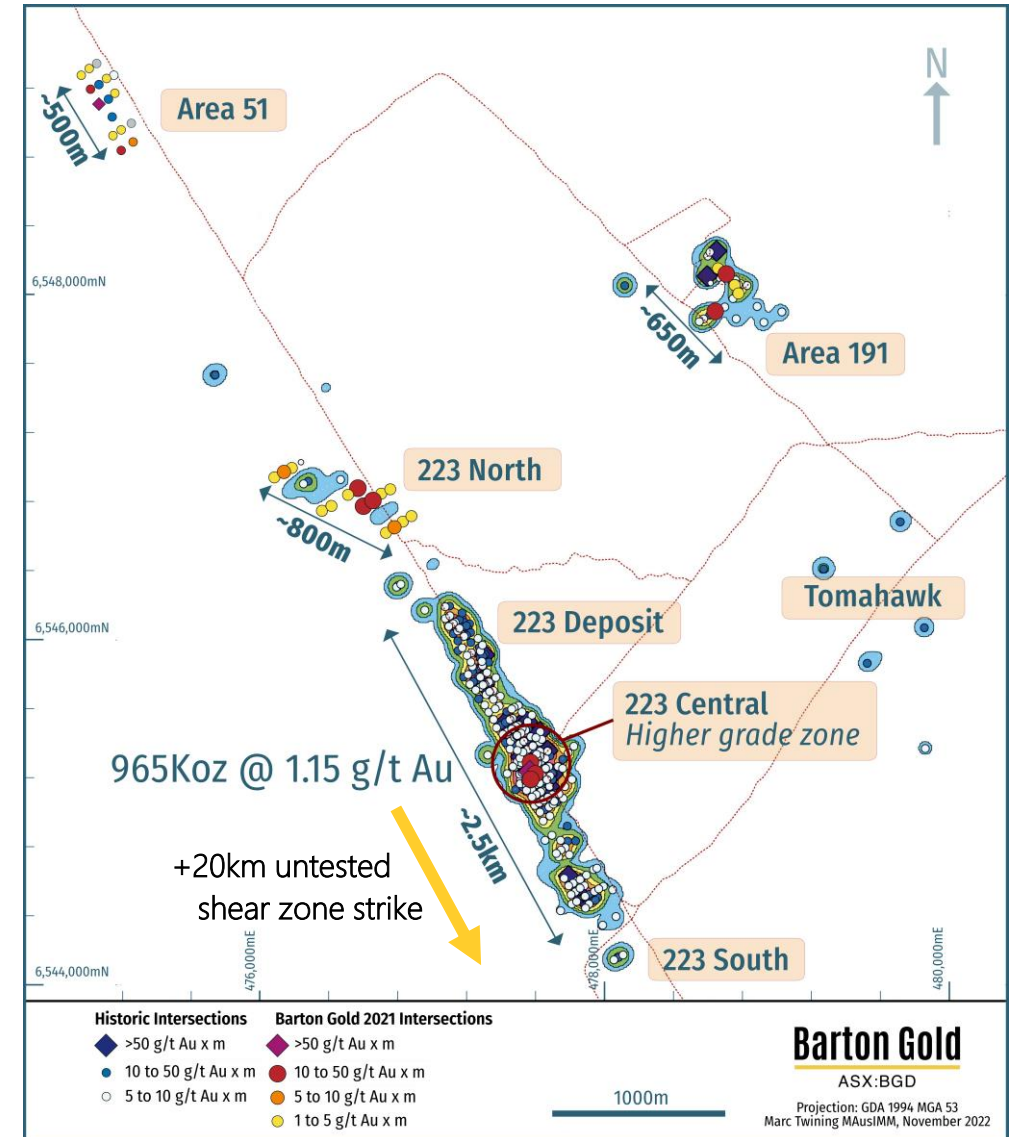
Areas 223N, 191 and 51 all newly confirmed since Nov 2021;

~2km of new gold mineralisation increases mineral footprint by 80% ⁽¹⁾



Recent new gold zones are just the tip of the iceberg;

20km+ of untested shear with gold mineralisation evident on both margins



1 Refer to Prospectus and ASX announcements dated 3 / 8 / 15 Nov 2021, and 5 Sep 2022

2 Refer to ASX announcement dated 15 Nov 2021

3 Refer to ASX announcement dated 5 Sep 2022

4 Refer to ASX announcements dated 15 Dec 2022 and 25 Jan 2023



Tunkillia 223 Deposit Upside

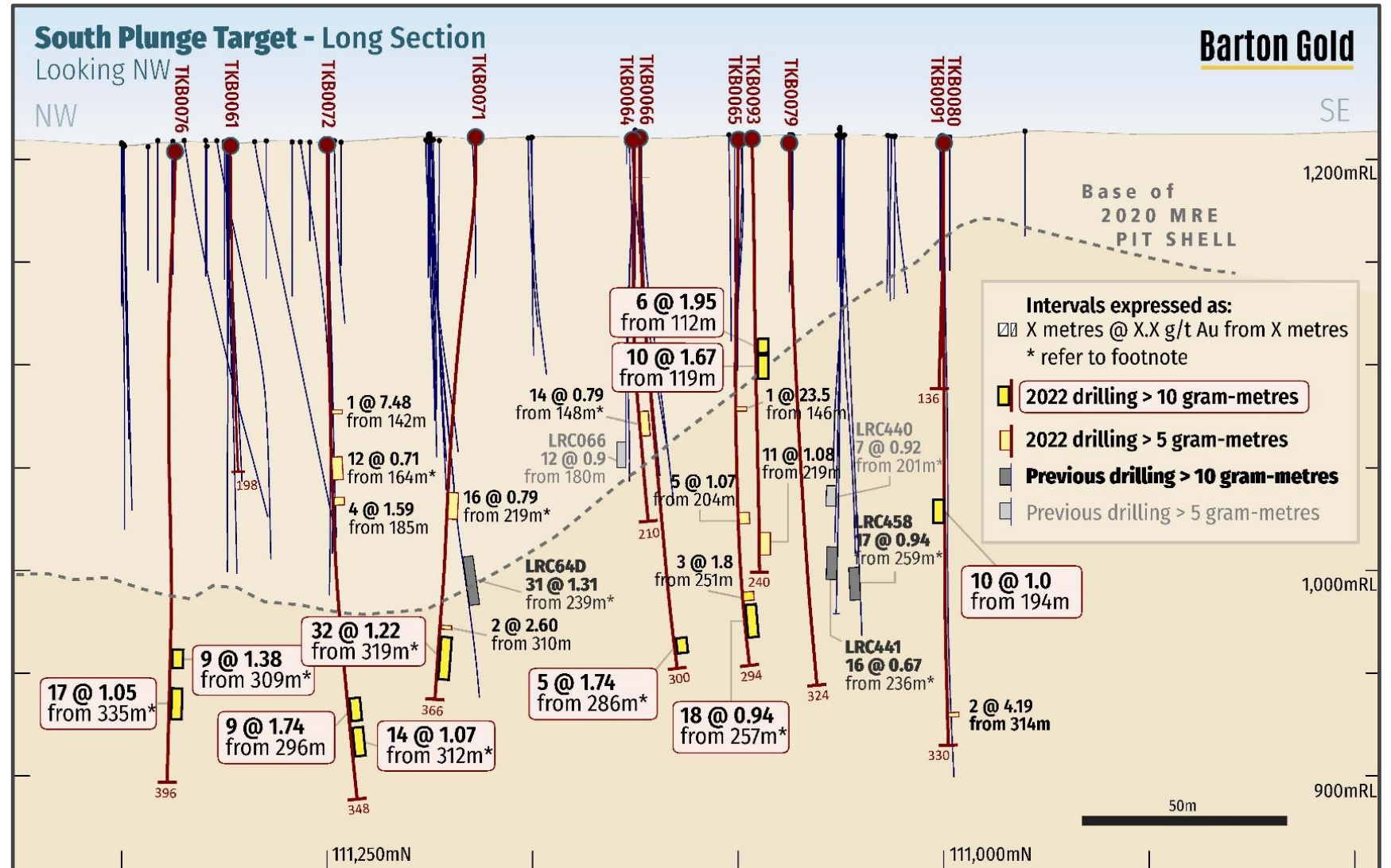
Significant Opportunity Outside & Below Shallow Historical Drilling

New drilling indicates new broad (20m+) gold zones 25 – 150m below MRE ⁽¹⁾

South Plunge Example (R): Potential continuous gold extensions on ~500m strike ⁽¹⁾

'South Plunge' intersections outside 2020 MRE include: ⁽¹⁾

- 10m @ 1.67 g/t Au from 119m
- 31m @ 1.31 g/t Au from 239m
- 18m @ 0.94 g/t Au from 257m
- 17m @ 0.94 g/t Au from 259m
- 14m @ 1.07 g/t Au from 312m
- 32m @ 1.22 g/t Au from 322m
- 17m @ 1.05 g/t Au from 335m



¹ Refer to ASX announcements dated 15 Dec 2022 and 25 Jan 2023



Tunkillia District Scale Potential

Barton Owns Neighbourhood with ~1 Moz Corner House

Area 51 is just the first in a long list of regional 'step out' discovery targets

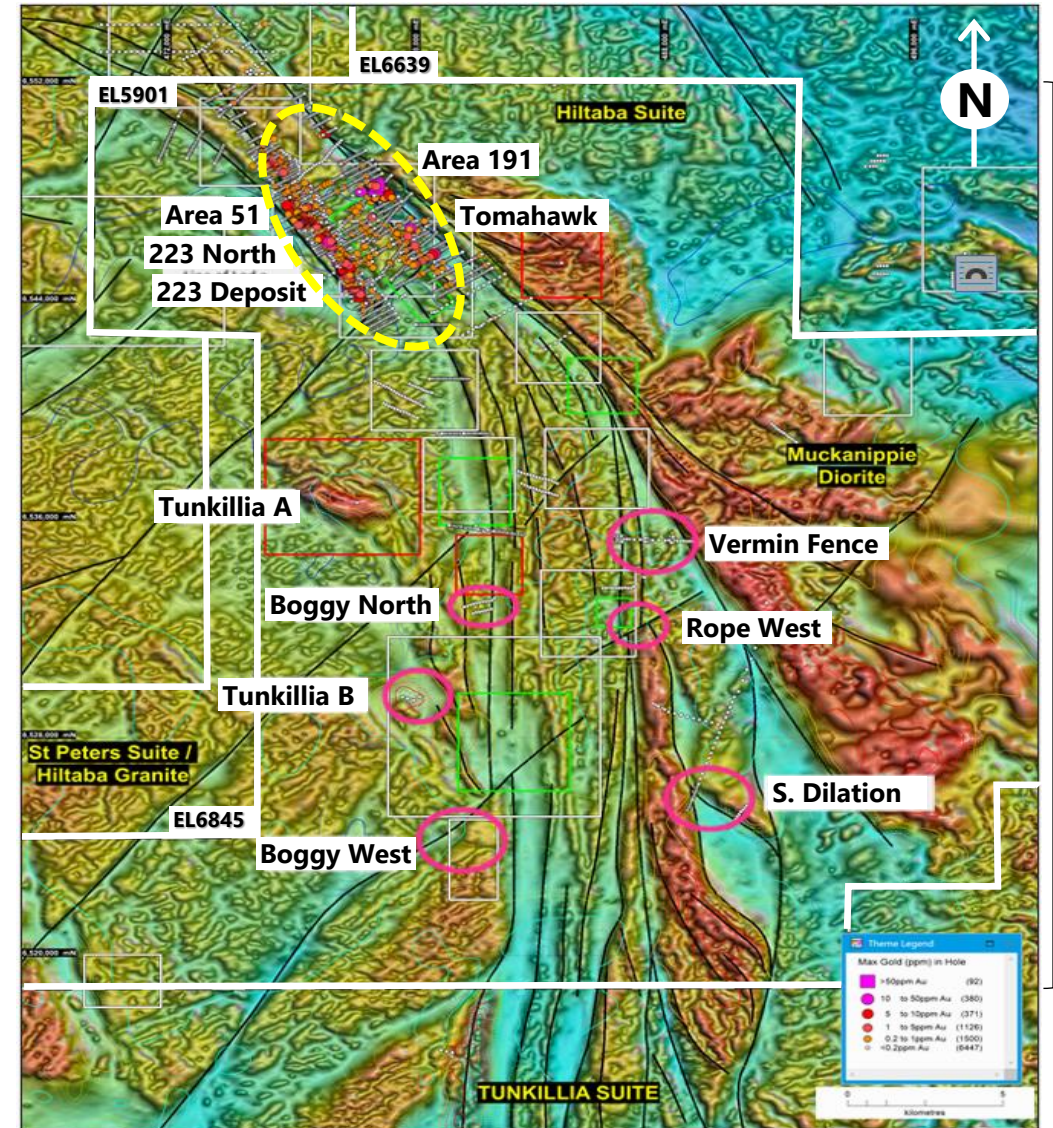
with current focus area less than 10% of shear zone coverage and over 20km strike untested

Yarbrinda Shear gold endowment is now well demonstrated
in northwestern 'hot spot'

New geophysical model drill validated
at 223N, Area 51 and Area 191 indicates southern targets

Potential to apply existing and new technologies
for accelerated discovery

Multiple key preliminary targets include
structural offsets and dilations





Tarcoola High-Grade History

High-Grade Mineralisation →
Stage 1 Startup & Stage 2 Blend



The home of South Australian gold

- ~1,640km² of historically underexplored prime ground
- Site of South Australia's 1893 gold rush
- ~77koz Au @ ~37.5 g/t Au from 1900 – 1955 ⁽¹⁾



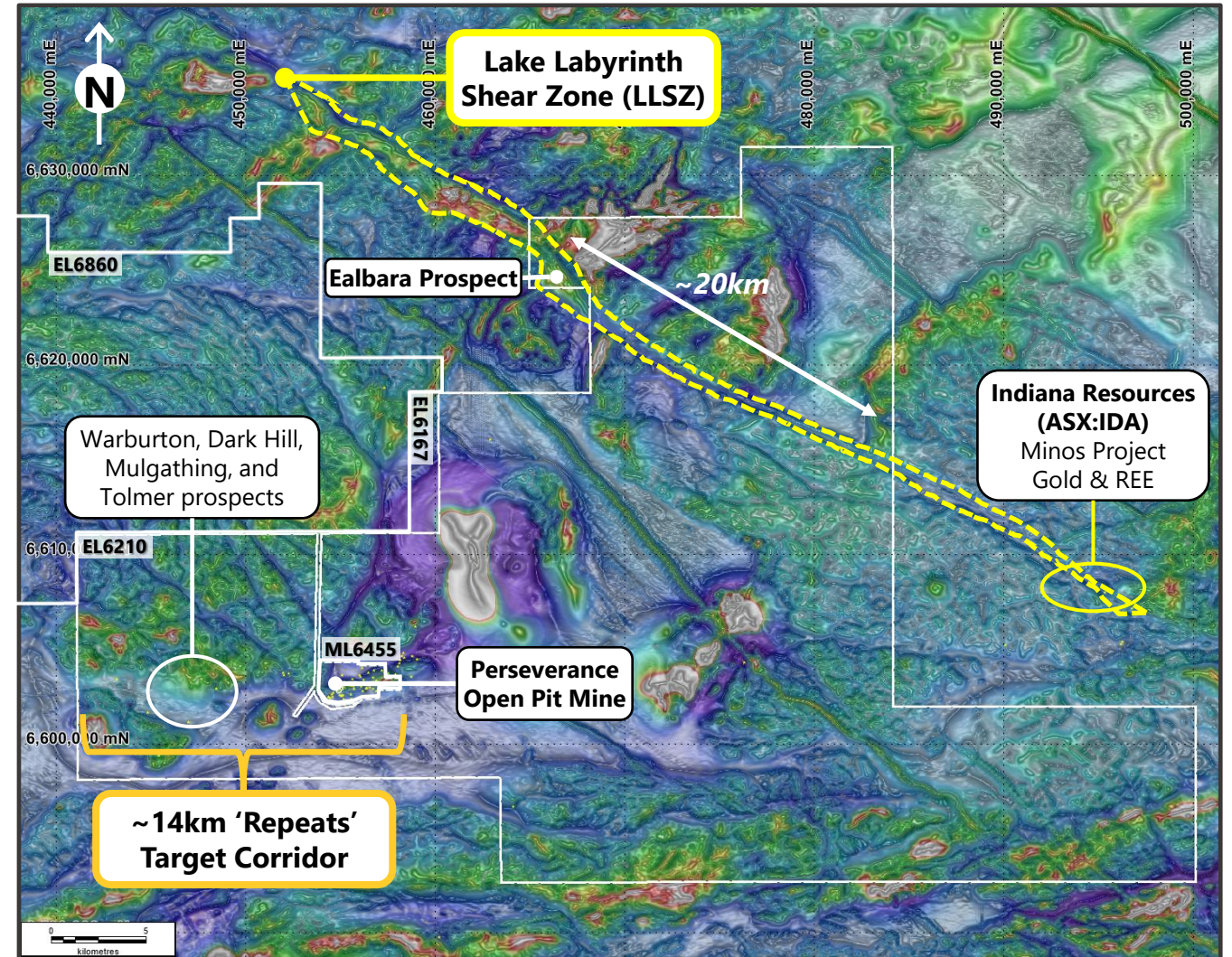
ML 6455: fully permitted Mining Lease

- Perseverance Mine – shallow high-grade open pit
- **2018: ~3.8 g/t Au ore sent to Central Gawler Mill** ⁽¹⁾
- Proven logistics, metallurgy and infrastructure
- Multiple 'repeat' targets on ML adjacent to open pit

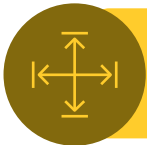


EL 6210: large scale target system(s)

- ~14km long 'repeating' system in target corridor ⁽¹⁾
- ~20km of Lake Labyrinth Shear Zone (LLSZ) strike
- Building up priority discovery targets



1 Refer to Prospectus



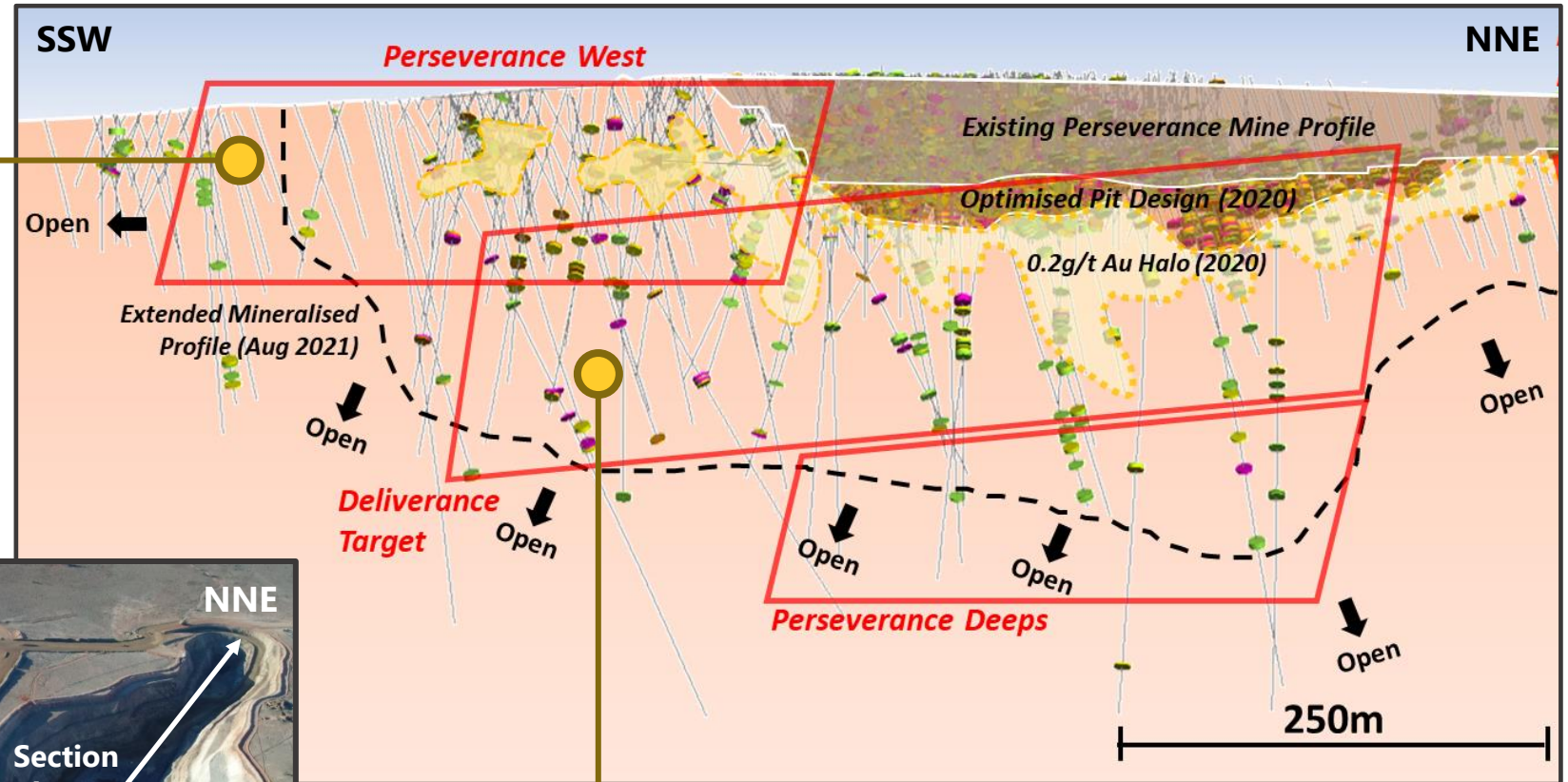
Tarcoola

Open Pit Extensions

Majority of Intersections Not Yet Included in Mineral Resources

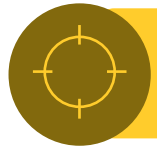
Perseverance West (1)

- 4m @ 6.85 g/t Au from 28m
- 7m @ 9.72 g/t Au from 42m
- 5m @ 20.6 g/t Au from 59m
- 6m @ 8.76 g/t Au from 96m
- 4m @ 11.4 g/t Au from 111m
- 5m @ 48.9 g/t Au from 115m



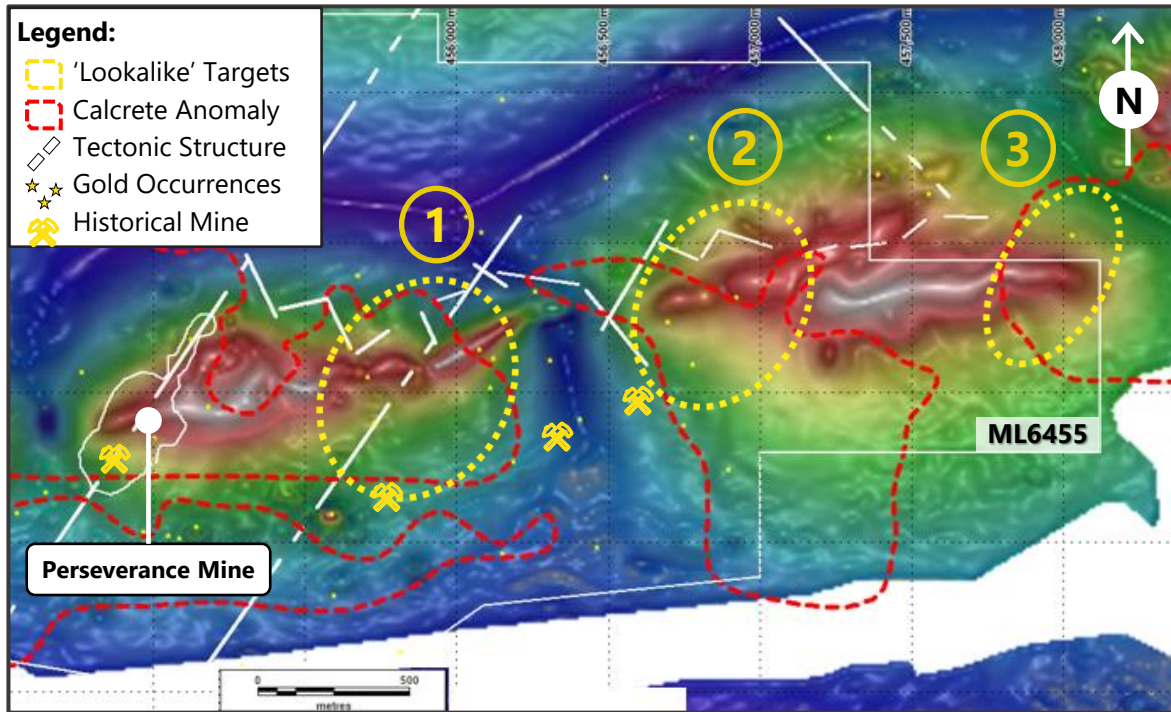
Deliverance Target (1)

- 2m @ 56.7 g/t Au from 92m
- 4m @ 11.4 g/t Au from 107m
- 4m @ 14.8 g/t Au from 138m
- 2m @ 15.1 g/t Au from 158m
- 6m @ 43.6 g/t Au from 197m
- 3m @ 33.7 g/t Au from 220m



Tarcoola Camp-Scale Repeats

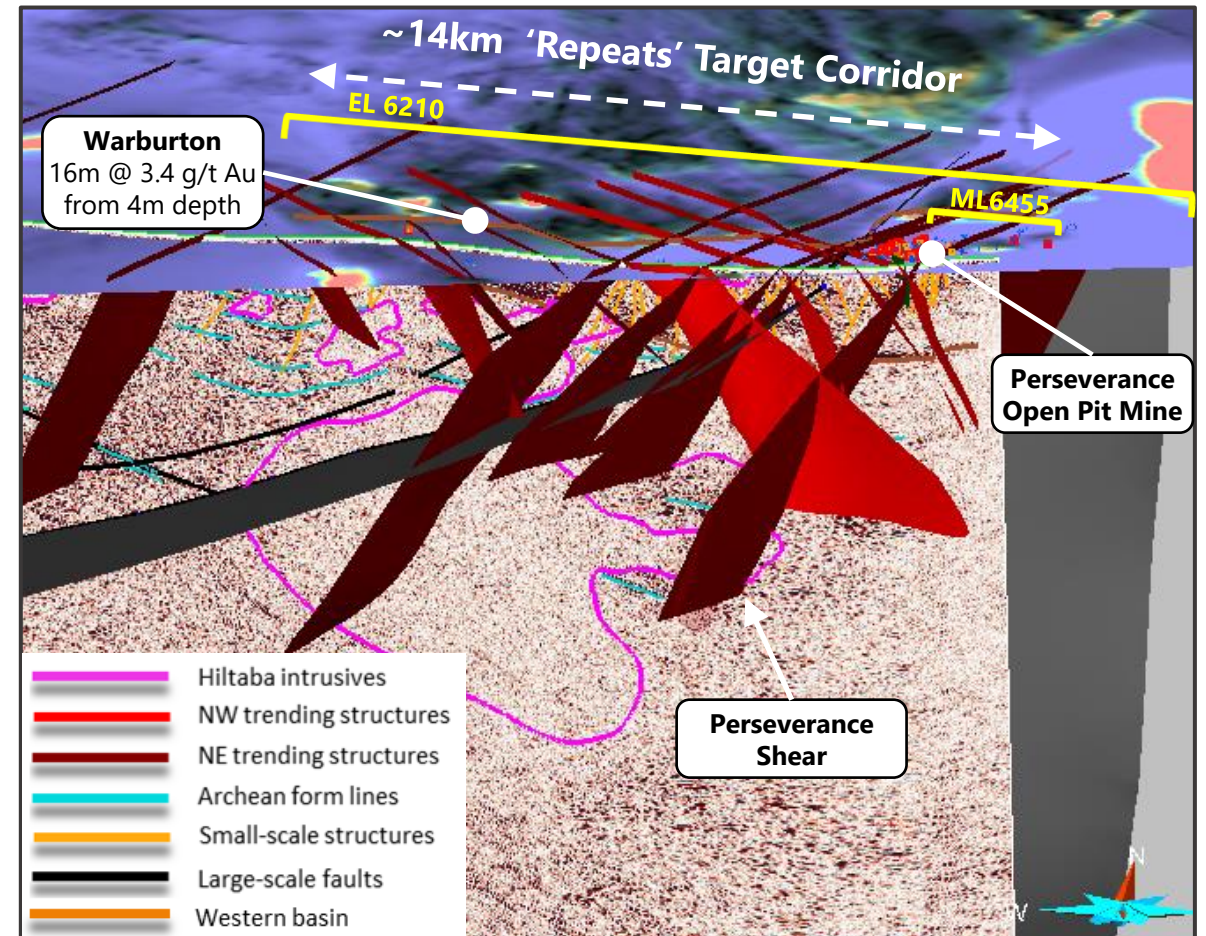
Regional Work is Mapping Out a Large Scale System



- Analysis indicates 'repeats' across Tarcoola ML / EL within a ~14km long corridor of newly identified structures ⁽¹⁾
- Validates historical data: AngloGold drilling at Warburton includes **16m @ 3.4 g/t Au from 4m depth** (Sep 1997) ⁽²⁾

1 Refer to Prospectus and ASX announcement dated 29 Sep 2021

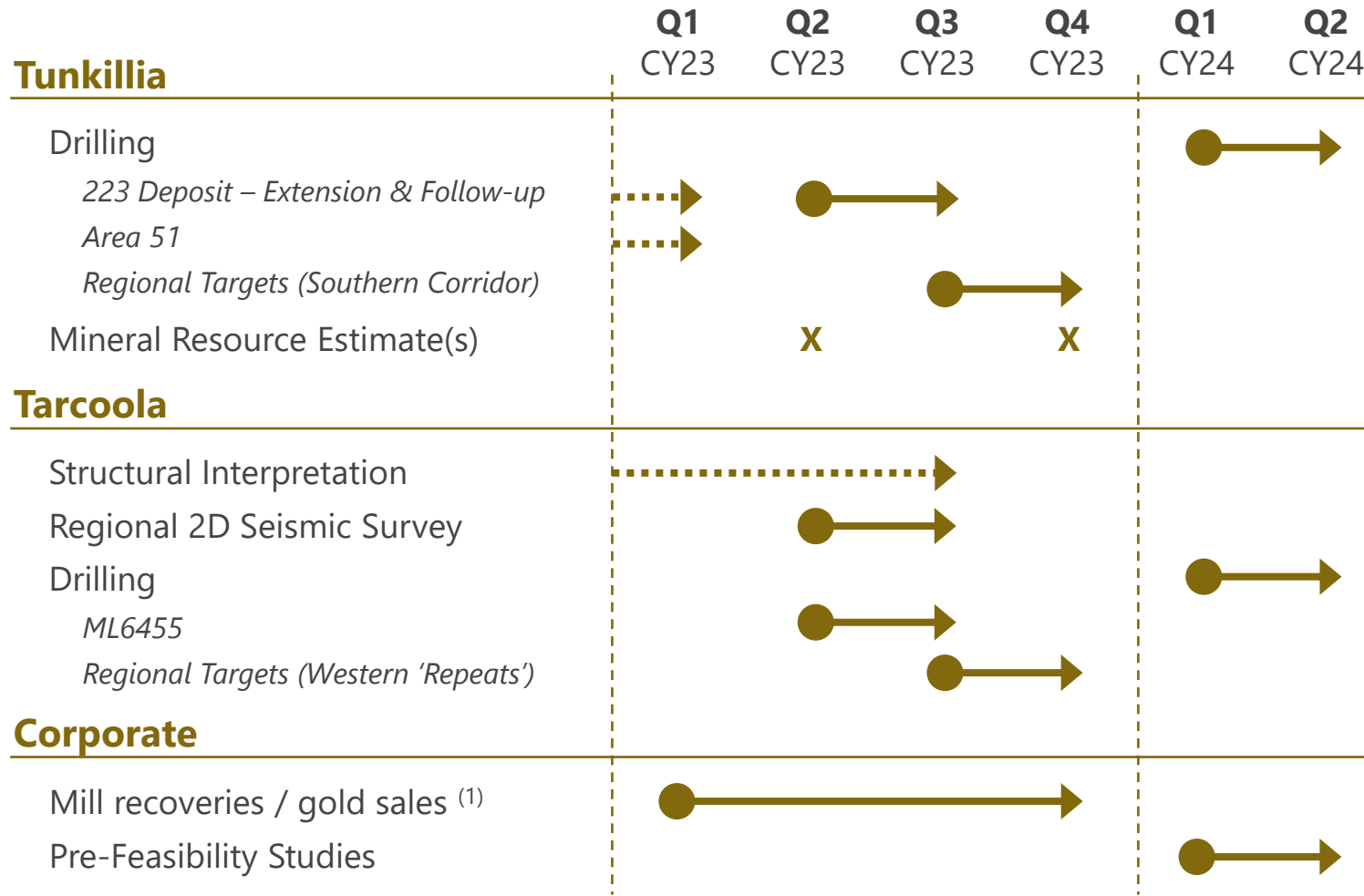
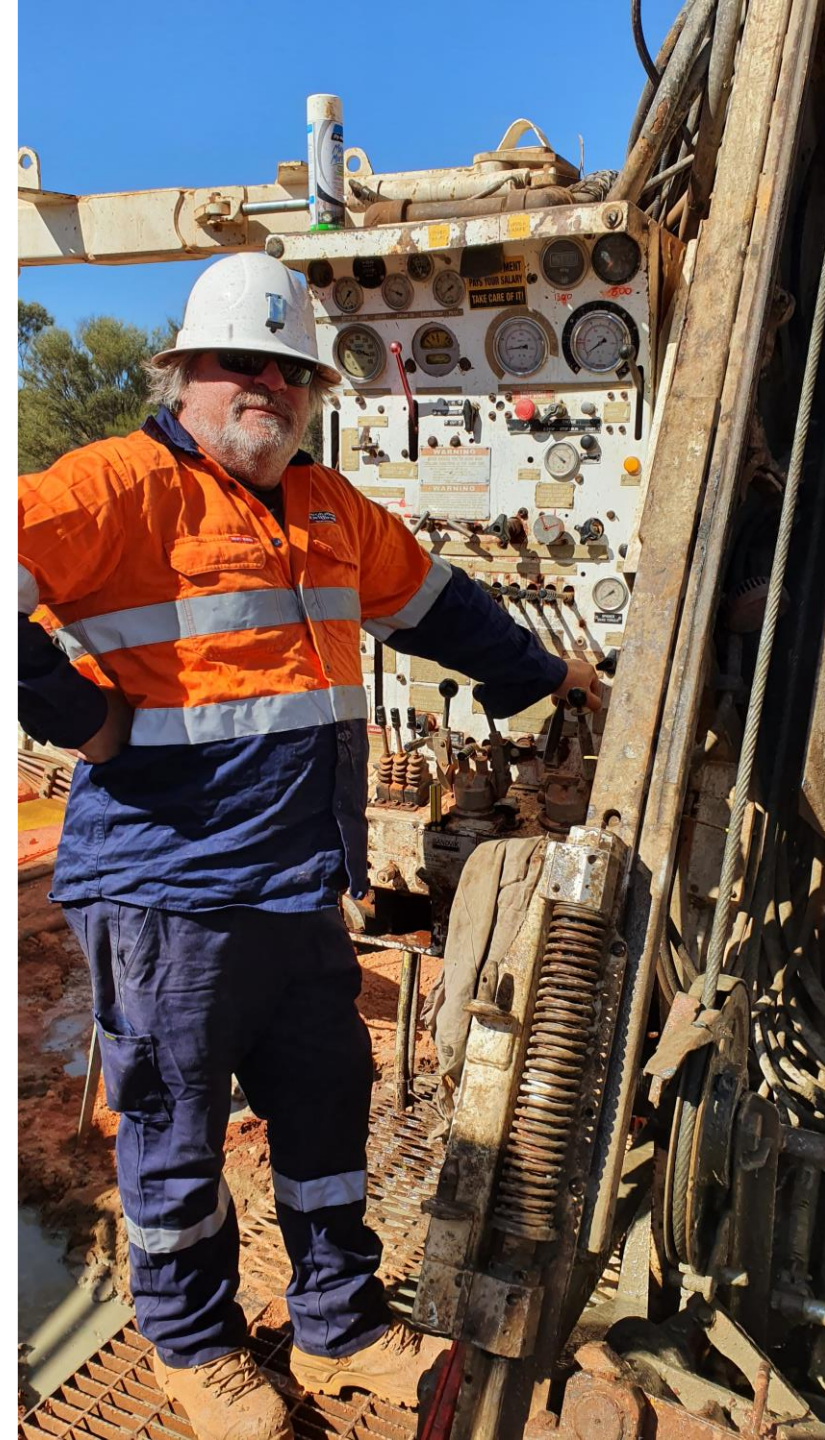
2 Refer to ASX announcement dated 10 Mar 2022





Coming Up...

A Transformative Year Ahead



1 Refer to ASX announcement dated 20 December 2022



Summary

A Unique ASX Gold Development Platform



Strategic 1.1Moz Au platform
with large-scale discovery potential
with existing mill infrastructure



Pure South Australian gold focus
and stakeholder support **with**
experienced leadership team



Growing rapidly with high asset
optionality **and clear pathway for**
Stage 1 development on existing MLs



Well capitalized and monetizing
assets to extend treasury, fund
exploration and minimise dilution



High news flow and significant
upcoming catalysts with drilling,
regional geophysics and multiple
planned Mineral Resource updates



Contact

Barton Gold

Barton Gold
ASX:BGD



Barton Gold

Level 4, 12 Gilles Street
Adelaide SA 5000

contact@bartongold.com.au

www.bartongold.com.au



Alexander Scanlon Managing Director & CEO

a.scanlon@bartongold.com.au

+61 425 226 649



Shannon Coates Company Secretary

cosec@bartongold.com.au

+61 8 9322 1587



Annexures

Barton Gold
ASX:BGD



JORC (2012) Mineral Resources¹

Project	Zone	Indicated			Inferred			TOTAL		
		MT	g/t Au	koz Au	MT	g/t Au	koz Au	MT	g/t Au	koz Au
Tunkilla*	Oxide Zone	4.8	1.27	195	1.7	0.92	50	6.5	1.17	245
(100%)	FreshZone	12.7	1.14	465	6.9	1.15	255	19.6	1.14	720
	Sub-Total	17.5	1.17	660	8.6	1.11	305	26.1	1.15	965
Tarcoola*	Perseverance Pit	0.07	1.7	3.8	0.07	1.1	2.4	0.14	1.4	6.2
(100%)	Low Grade Stockpile - Oxide	--	--	--	0.17	1.2	6.9	0.17	1.2	6.9
	Low Grade Stockpile - Fresh	--	--	--	0.06	1.4	2.7	0.06	1.4	2.7
	Sub-Total	0.07	1.7	3.8	0.30	1.2	12.0	0.37	1.3	15.8
Challenger*	Above 215 RL Fault	--	--	--	0.32	4.1	42.6	0.32	4.1	42.6
(100%)	Challenger Deeps (below 90m RL)	--	--	--	0.21	3.5	23.0	0.21	3.5	23.0
	Sub-Total	--	--	--	0.53	3.9	65.6	0.53	3.9	65.6
WGCJV**	Golf Bore	0.6	1.0	18	3.2	1.0	100	3.8	1.0	119
(~19-21%)	Campfire Bore	--	--	--	2.8	1.2	109	2.8	1.2	109
	Greenwood	0.1	1.4	7	0.8	1.6	39	0.9	1.6	46
	Monsoon	--	--	--	0.6	0.8	17	0.6	0.8	17
	Typhoon	--	--	--	0.3	1.9	16	0.3	1.9	16
	Mainwood	--	--	--	0.4	1.1	12	0.4	1.1	12
	Sub-Total	0.7	1.1	25	7.99	1.1	294	8.7	1.1	319
TOTAL ATTRIBUTABLE		17.7	1.2	669	10.97	1.2	439	28.68	1.20	1,108

Table shows complete Mineral Resources Estimate (MRE) for each Project on a 100% basis, with Barton's ownership interest indicated below each Project's name

Total Attributable endowment of 1,108koz Au reflects Barton aggregate pro-rata ownership of Project MREs

* **Additional Notes:** Figures subject to rounding; tonnages are dry-metric tonnes; all Mineral Resources classified as 'inferred' are approximate; cut-off grades applied are 0.4 g/t Au (Tunkillia), 0.4 g/t Au (Tarcoola), 2.0 g/t Au (Challenger), 0.5 g/t Au (WGCJV).

^ **WGCJV:** Barton has a present gold rights interest of 21.16% in Monsoon and Typhoon and 19.04% in Golf Bore, Campfire Bore, Greenwood and Mainwood.

For clarification and the avoidance of doubt, pursuant to the current terms of the WGCJV and the All Minerals JV, the Company has a present gold rights interest of 21.16% in the Monsoon and Typhoon deposits, and 19.04% in the Golf Bore, Campfire Bore, Greenwood and Mainwood deposits.

Accordingly, the Company's approximate attributable Mineral Resources inventory from the WGCJV is 61,400 ounces Au.

¹ Refer to Prospectus and Barton ASX Announcement dated 14 October 2021 for further details of Barton's attributable JORC (2012) Mineral Resources Inventory



Competent Persons Statements

The information relating to Exploration Results and Mineral Resources in this presentation is extracted from the Company's Prospectus dated 14 May 2021 (Prospectus) and Barton ASX announcements as cross-referenced in the body of this presentation. A copy of the Prospectus is available for download at www.bartongold.com.au or www.asx.com.au. The Company confirms that it is not aware of any new information or data that materially affects the Exploration Results and Mineral Resource information included in the Prospectus and, in the case of estimates of Mineral Resources, that all material assumptions and technical parameters underpinning the estimates in the Prospectus continue to apply and have not materially changed. The Company confirms that the form and context in which the applicable Competent Persons' findings are presented have not been materially modified from the Prospectus.

Competent Persons (Tarcoola)

The information in this presentation that relates to the estimate of Mineral Resources for the Tarcoola Gold Project is based upon, and fairly represents, information and supporting documentation compiled by Dr Andrew Fowler MAusIMM CP (Geo). Dr Fowler is an employee of Mining Plus Pty Ltd and has acted as an independent consultant on Barton Gold's Tarcoola Gold Project, South Australia. Dr Fowler is a Member of the Australian Institute of Mining and Metallurgy (AusIMM) and has sufficient experience with the style of mineralisation, the deposit type under consideration and to the activity being undertaken, to qualify as a Competent Person as defined in the 2012 Edition of the "Australasian Code for Reporting of Exploration Results, Mineral Resources and Ore Reserves" (The JORC Code).

The information in this presentation that relates to Exploration Results for the Tarcoola Gold Project prior to 15 Nov 2021 (including drilling, sampling, geophysical surveys and geological interpretation) is based upon, and fairly represents, information and supporting documentation compiled by Mr Colin Skidmore BSc Hons (Geology) MAppSc. Mr Skidmore is an employee of Mining Plus Pty Ltd and has acted as an independent consultant on Barton Gold's Tarcoola Gold Project, South Australia. Mr Skidmore is a Member of the Australian Institute of Geoscientists (AIG Member 05415)) and has sufficient experience with the style of mineralisation, the deposit type under consideration and to the activity being undertaken, to qualify as a Competent Person as defined in the 2012 Edition of the "Australasian Code for Reporting of Exploration Results, Mineral Resources and Ore Reserves" (The JORC Code).

The information in this announcement that relates to new Exploration Results for the Tarcoola Gold Project after 15 Nov 2021 (including drilling, sampling, geophysical surveys and geological interpretation) is based upon, and fairly represents, information and supporting documentation compiled by Mr Marc Twining BSc Hons (Geology). Mr Twining is a full-time employee of Barton Gold Holdings Ltd, and is a Member of the Australasian Institute of Mining & Metallurgy (AusIMM Member 112811) and has sufficient experience with the style of mineralisation, the deposit types under consideration and to the activity being undertaken, to qualify as a Competent Person as defined in the 2012 Edition of the "Australasian Code for Reporting of Exploration Results, Mineral Resources and Ore Reserves" (The JORC Code).

Competent Person (Tunkillia)

The information in this presentation that relates to the estimate of Mineral Resources for the Tunkillia Gold Project including drilling, sampling and geological interpretation is based upon, and fairly represents, information and supporting documentation compiled by Dr Andrew Fowler MAusIMM CP (Geo). Dr Fowler is an employee of Mining Plus Pty Ltd and has acted as an independent consultant on Barton Gold's Tunkillia Gold Project, South Australia. Dr Fowler is a Member of the Australian Institute of Mining and Metallurgy (AusIMM) and has sufficient experience with the style of mineralisation, the deposit type under consideration and to the activity being undertaken, to qualify as a Competent Person as defined in the 2012 Edition of the "Australasian Code for Reporting of Exploration Results, Mineral Resources and Ore Reserves" (The JORC Code).

The information in this presentation that relates to Exploration Results for the Tunkillia Gold Project prior to 15 Nov 2021 (including drilling, sampling, geophysical surveys and geological interpretation) is based upon, and fairly represents, information and supporting documentation compiled by Mr Colin Skidmore BSc Hons (Geology) MAppSc. Mr Skidmore is an employee of Mining Plus Pty Ltd and has acted as an independent consultant on Barton Gold's Tunkillia Gold Project, South Australia. Mr Skidmore is a Member of the Australian Institute of Geoscientists (AIG Member 05415)) and has sufficient experience with the style of mineralisation, the deposit type under consideration and to the activity being undertaken, to qualify as a Competent Person as defined in the 2012 Edition of the "Australasian Code for Reporting of Exploration Results, Mineral Resources and Ore Reserves" (The JORC Code).

The information in this announcement that relates to new Exploration Results for the Tunkillia Gold Project after 15 Nov 2021 (including drilling, sampling, geophysical surveys and geological interpretation) is based upon, and fairly represents, information and supporting documentation compiled by Mr Marc Twining BSc Hons (Geology). Mr Twining is a full-time employee of Barton Gold Holdings Ltd, and is a Member of the Australasian Institute of Mining & Metallurgy (AusIMM Member 112811) and has sufficient experience with the style of mineralisation, the deposit types under consideration and to the activity being undertaken, to qualify as a Competent Person as defined in the 2012 Edition of the "Australasian Code for Reporting of Exploration Results, Mineral Resources and Ore Reserves" (The JORC Code).

Competent Person (Challenger)

The information in this presentation that relates to the estimate of Mineral Resources for the Challenger Mine is based upon, and fairly represents, information and supporting documentation compiled by Mr Dale Sims, a Competent Person, who is a Chartered Professional Fellow of the Australasian Institute of Mining and Metallurgy (AusIMM) and a Member of the Australian Institute of Geoscientists (AIG). Mr Sims is the principal of Dale Sims Consulting Pty Ltd and an independent consultant engaged by Barton Gold for this work and has sufficient experience that is relevant to the style of mineralisation and type of deposit under consideration and to the activity being undertaken to qualify as Competent Person as defined in the 2012 edition of the "Australasian Code for Reporting of Exploration Results, Mineral Resources and Ore Reserves" (The JORC Code).

Competent Person (Western Gawler Craton Joint Venture)

The information in this presentation that relates to Exploration Results and the estimate of Mineral Resources for the Western Gawler Craton Joint Venture is based upon, and fairly represents, information and supporting documentation compiled by Mr Richard Maddocks who is a Fellow of the Australasian Institute of Mining and Metallurgy (AusIMM). Mr Maddocks is an independent consultant geologist with Auranmore Consulting who prepared the information, and has sufficient experience that is relevant to the style of mineralisation and type of deposit under consideration and to the activity being undertaken to qualify as a Competent Person as defined in the December 2012 edition of the "Australasian Code for Reporting of Exploration Results, Mineral Resource and Ore Reserves" (the JORC Code).