



WE CREATE SOLUTIONS

ASX ANNOUNCEMENT

5 April 2023

ENTITLEMENT ISSUE INVESTOR PRESENTATION

Technology solutions company RemSense Technologies Limited (ASX: REM) ("RemSense") is pleased to release the following Entitlement Issue Investor Presentation.

-ENDS-

This announcement has been approved for release by the Board of RemSense Technologies Limited.

For further information:

Steve Brown
Managing Director and CEO
+61 8 6118 5610
rem@remsense.com.au

About RemSense

RemSense Technologies Limited (ASX: REM)

RemSense has developed virtualplant, a photographic asset visualisation platform that fulfills the promise of VR/AI technology as a digital representation of plant assets (digital twin) that integrates with existing business operations and asset management systems to deliver greater productivity, increased safety, and reduced cost.

RemSense Technologies Limited ASX:REM

5 April 2023 – Entitlement Issue

virtualplant

Be There Without Going There

Investor Presentation

Disclaimer

The material in this presentation has been prepared by RemSense Technologies Limited ("Company").

This presentation may not be reproduced, redistributed, or passed on, directly or indirectly, to any other person, or published, in whole or in part, for any purpose without prior written approval of the Company. The material contained in this presentation is for information purposes only. This presentation is not an offer or invitation for subscription or purchase of, or a recommendation in relation to, securities in the Company and neither this presentation nor anything contained in it shall form the basis of any contract or commitment. Any offering of any of the Company's securities to Australian persons will be subject to Australian securities laws. The distribution of this document in jurisdictions outside of Australia may be restricted by law, and persons into whose possession this document comes should inform themselves about, and observe, all such restrictions.

This presentation is not financial product or investment advice. It does not take into account the investment objectives, financial situation and particular needs of any investor. Before making an investment in the Company, an investor or prospective investor should consider whether such an investment is appropriate to their particular investment needs, objectives and financial circumstances, seek legal and taxation advice as appropriate and consult a financial adviser if necessary.

This presentation may contain forward-looking statements that are subject to risk factors associated with the business. Forward looking statements include those containing such words as "anticipate", "estimates", "forecasts", "should", "could", "may", "intends", "will", "expects", "plans" or similar expressions. Such forward-looking statements are not guarantees of future performance and involve known and unknown risks, uncertainties, assumptions, and other important factors, many of which are beyond the control of the Company. It is believed that the expectations reflected in these statements are reasonable, but they may be affected by a range of variables and changes in underlying assumptions which could cause actual results or trends to differ materially. The Company does not make any representation or warranty as to the accuracy of such statements or assumptions.

This presentation has been prepared by the Company based on information currently available to it. No representation or warranty, express or implied, is made as to the fairness, accuracy, completeness or correctness of the information, opinions and conclusions contained in this presentation. To the maximum extent permitted by law, none of the Company or its subsidiaries or affiliates or the directors, employees, agents, representatives or advisers of any such party, nor any other person accepts any liability for any loss arising from the use of this presentation or its contents or otherwise arising in connection with it, including without limitation, any liability arising from fault or negligence on the part of the Company or its subsidiaries or affiliates or the directors, employees, agents, representatives or advisers of any such party.

RemSense Primed for Growth

Virtualplant - developed for industry to solve real industry challenges to improve knowledge, productivity and safety

✓ **Established Tier 1 clients**

✓ **Established Global Partnerships**



Silver
Business
Partner

IBM

SAP® Partner
Open Ecosystem



Matterport

✓ **Forecast Cash Flow positive in CY 2023**

✓ **Established route to Global Market**

✓ **Implemented evolved strategy to match opportunities**

WHO WE ARE

**We are a Digital Technology
company engaged in
industrial transformation using
Digital Twins**

Our people have years of extensive industrial experience with tier 1 clients



Chris Sutherland

NON-EXECUTIVE CHAIRMAN



Steve Brown

MANAGING DIRECTOR AND CEO



Ross Taylor

NON-EXECUTIVE DIRECTOR



Anthony Roe

CHIEF DIGITAL OFFICER



Jillian Rosich

CHIEF FINANCIAL OFFICER



Rory O'Connor

VIRTUAL PLANT PRODUCT AND
PROJECTS MANAGER



Adrian Hollis

GENERAL MANAGER OPERATIONS

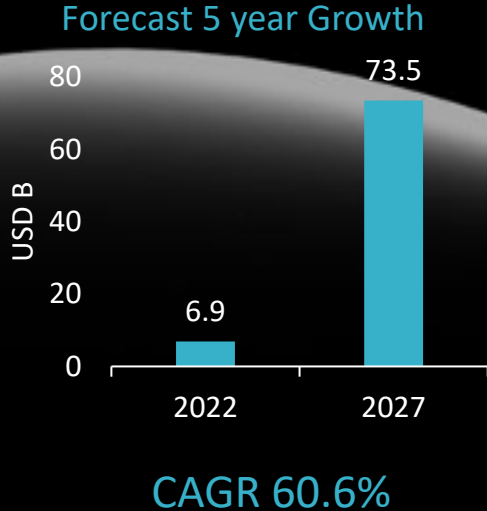
INDUSTRY CHALLENGE

Employees lose almost **two full working days** each week solving avoidable issues and searching for project information.*

Escalating **costs and ESG** challenges managing geographically distributed assets.

* PlanGrid in partnership with management consulting firm FMI Corporation surveyed nearly 600 construction leaders in 2018 about how teams spend their time on construction sites, communicate during projects, and leverage their technology investments. The survey indicates that time spent on non-optimal activities such as fixing mistakes, looking for project data, and managing conflict resolution accounts for \$177.5 billion in labour costs per year in the US alone.

Industry Challenges are Driving Global Digital Twin Market Demand



Global Sector Drivers

- Healthcare sector
- Industries with growing focus on predictive maintenance

Applications

- Predictive maintenance
- Business optimisation
- Performance monitoring
- Asset control and optimisation

* Source - Digital Twin Market Global Forecast to 2027, Market to Market June 2022

OUR ANSWER



We have developed virtualplant

A photographic asset visualisation platform that fulfills the promise of VR/AI technology as a digital representation of plant assets (digital twin) that integrates with existing business operations and asset management systems to deliver greater productivity, increased safety, and reduced cost via an intuitive, immersive experience.

Why does virtualplant excite end users and asset management software providers

“We are really excited by the development of the integration of virtualplant to the IBM MAS suite of Applications, the visualisation of assets will provide immense value to our clients and creates a unique experience to navigate and analyse data in a human centric environment.”

Business Unit Executive IBM ANZ

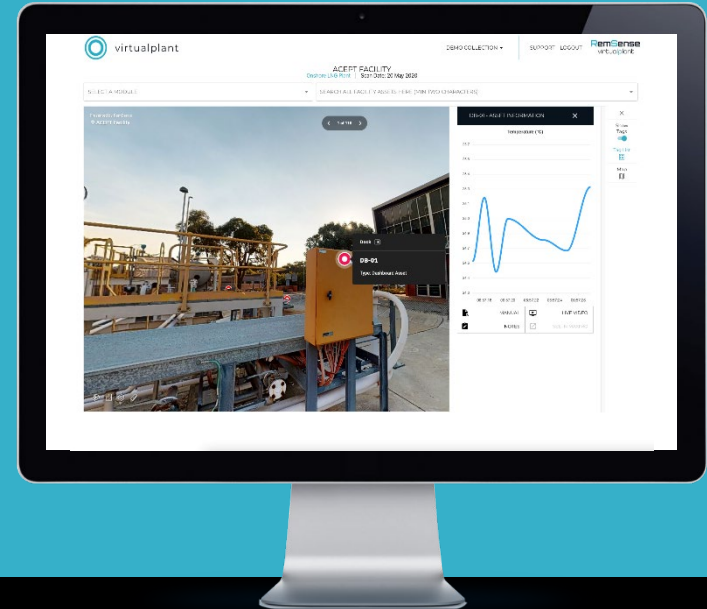
Current Ways of Working

Forms based
Lacks accuracy
Hard to navigate siloed data
Intensive training required
Difficult to get complete picture



Solution

Intuitive visual interface
Minimal training
One source of truth
Interface to existing systems
Data Silos opened and accessible



virtualplant

- Anywhere, Anytime on Any device
- Developed, tested and operating in real world environments
- AWS certified software
- Relevant for any industry sector with a distributed asset base
- Simplify collaboration across geographically dispersed and multi-function teams
- IP owned by RemSense





DEMO COLLECTION

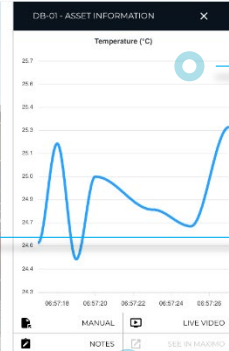
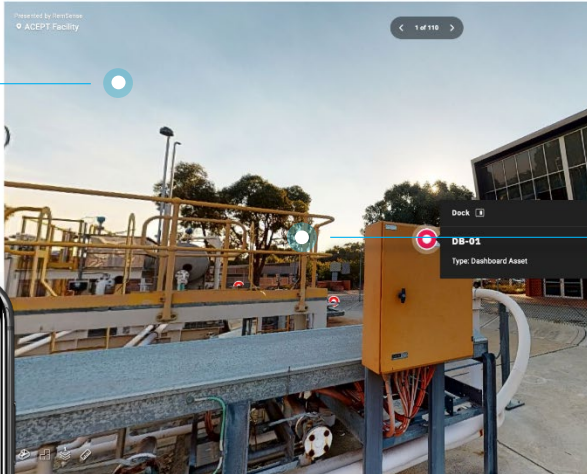
SUPPORT LOGOUT

RemSense
virtualplant

ACEPT FACILITY
Onshore LNG Plant | Scan Date: 20 May 2020

SELECT A MODULE

SEARCH ALL FACILITY ASSETS HERE (MIN TWO CHARACTERS)

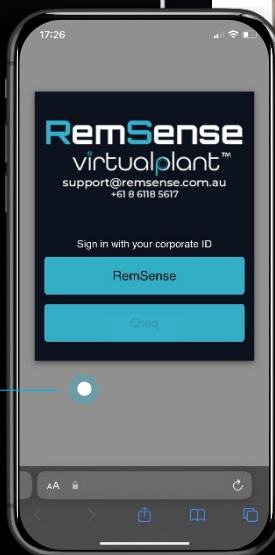


Automated asset
identification and link to
existing client systems

Automated corrosion
detection

IoT (Internet of things)
data integration

High Resolution
photogrammic digital twin



Secure external
access for
contractors and
partners

We have significant opportunities

MILESTONES ACHIEVED:



Partnerships



Strategy



Growth

MILESTONE ACHIEVED:



Partnerships

In 2022 we started partnering and integrating with **global industrial asset management and analytics system providers** including IBM. Opportunities for virtualplant are exponentially larger than anticipated.

Partners provide Global Route to Market

SAP® Partner
Open Ecosystem

 **Matterport**



Silver
Business
Partner



CODA
CENTRE OF
DECOMMISSIONING
AUSTRALIA

Initial focus on IBM Partnership



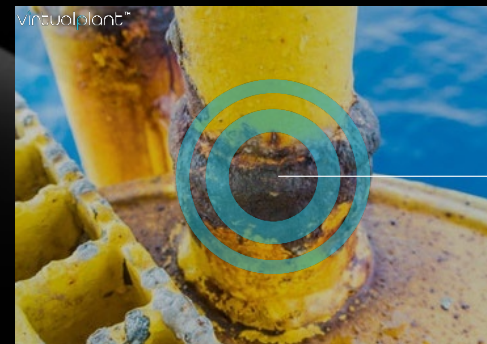
FULL SUPPORT

Agreements and strategy signed.
Pilot programs underway.



AGREED ACTIONS

Jan - March 23: complete pilot programs and integrations, build marketing stories.
April - June 23: sales enablement through global network.



CORROSION DETECTION

Agreed as first analytics product target. IBM intend to also target SAP clients with the virtualplant analytics offering.

Opportunity

IBM & SAP –Enterprise Asset Management

40%

GLOBAL EAM MARKET

29%
market share

4,500 global users

IBM
MAXIMO

Scanning	\$150k ea	\$675M
SaaS	\$96k ea	\$432M pa
Analytics	\$50k ea	\$225M pa

Opportunity \$3,960M

10%
market share

1,500 global users

SAP

Scanning	\$150k ea	\$225 M
SaaS	\$96k ea	\$144M pa
Analytics	\$50k ea	\$75M pa

Opportunity \$1,320M

\$5B

TOTAL MARKET SIZE (5YEARS)*

virtualplant™

* Based upon an assumed 5-year contract value made up of one times the initial data capture sales plus 5 times the annual subscription sales / costs in AUD

MILESTONE ACHIEVED:



Strategy

We evolved our business strategy to match opportunities

- 1** Redirected **resources** to develop as a fully certified enterprise grade solution with analytics capabilities as identified by targeted partners and clients.
- 2** Refreshed the **marketing** strategy to give greater focus on strategic partnerships with leading global asset management solution providers.
- 3** Developed **new features** to **features** to extend the product further than originally planned in this time period.
- 4** Reorganised and restructured the business to simplify the **business model** to focus on virtualplant and associated data capture and services.

MILESTONE ACHIEVED:



Growth



Tier 1 clients utilising
virtualplant:

- Woodside Energy - full SaaS
- Chevron - fully integrated into Kongsberg Kognitwin



Prosecuting **77** qualified
direct sales opportunities in
Australia



Pilot programs active across
market sectors:

- Programmed
- Newmont Mining



Global partnerships with
major asset management
software providers in place.

Revenue Model

INITIAL SET UP	ANNUAL RECURRING
Site Scanning	SaaS Fees
\$50k to \$550k	\$96k per asset
Integration with client system	Updated Scanning
\$> 50k	\$25k to \$250k per asset
	Analytics
	\$50k

Typical subject to asset size, number of assets and requested optional features

Values based on a typical oil and gas platform

* price in AUD

Rights Offer Information*

Rights Offer	
Offer Price per Share	\$0.075
Offer Price per \$0.15 Option	\$0.00
Entitlement Ratio (based on existing Shares)	1:3
Shares currently on issue	91,099,465
Shares available under the Rights Offer	30,366,489
Total Shares on issue after completion of the Offer	121,465,954

Schedule Highlights	
Ex date	6 April 23
Entitlement Date	11 April 23
Offer Opens	14 April 23
Offer Closes	27 April 23

Proceeds of the Rights Offer	
Expansion of sales and marketing	60.4%
Working capital	36.3%
Expenses of the Offer	3.3%
Total	100%

* Refer to Entitlement Issue Prospectus dated 3 April 2023 for comprehensive information and disclosures.



Be There Without Going There There

Suit 173, Level 4, 580 Hay Street -
Perth, WA

rem@remsense.com.au
(08) 6118 5610
www.remsense.com.au

