



ASX Release

14 April 2023

March 2023 Quarterly Report

HIGHLIGHTS

Duketon Project (100% DKM)

Final assays returned from November 2022 diamond drill program. Significant intercepts include:

- **DKDD0031 – 4.5m @ 1.91% Ni 0.67% Cu & 6.58g/t PGEs (4.91% NiEq*)**
- **DKDD0032 – 3.31m @ 1.57% Ni 0.27% Cu & 2.64g/t PGEs (2.71% NiEq*)**
- **DKDD0033 – 2.95m @ 3.13% Ni 0.4% Cu & 3.74g/t PGEs (4.79% NiEq*)**

Significant individual Palladium assays up to **30g/t** were returned in DKDD0031 and Nickel assays up to **6.65%** in DKDD0033.

Diamond drill program commenced in February 2023 targeting:

- large EM conductor identified west of Rosie Resource on C2 contact
- extensions to known mineralisation within the greater Bulge ultramafic complex
- down plunge of Rosie beneath current resource

First diamond drillhole completed at the Bulge Complex

- returned a sulphide interval over 5.5 metres
- interval located 270m beneath previous historical drill intercepts in this area

Drilling continuing at end of quarter.

Corporate

- Review of development options for Rosie and C2 Resources continuing.
- Cash and liquids at 31 March 2023 of \$16.8 million

* The NiEq number is calculated using the same parameters as the latest MRE (see ASX announcement 10 March 2022). Assumptions for the nickel equivalent prices, recovery and calculation are detailed in the attached JORC Table 1. The Company confirms that it is not aware of any new information or data that materially affects the information included in the original market announcement and that all material assumptions and technical parameters underpinning the estimates in the announcement continue to apply and have not materially changed.



Rosie Diamond Drilling (100% DKM)

During the quarter Duketon Mining Ltd (**ASX: DKM**, “**Duketon**” or “**the Company**”) received final assay results for the diamond drilling program (DKDD0031 to DKDD0033) completed in November 2022 (ASX: DKM 6th February 2023 & 6th March 2023).

Significant intercepts from final assays include:

- **DKDD0031 – 4.5m @ 1.91% Ni 0.67% Cu & 6.58g/t PGEs (4.91% NiEq*)**
- **DKDD0032 – 3.31m @ 1.57% Ni 0.27% Cu & 2.64g/t PGEs (2.71% NiEq*)**
- **DKDD0033 – 2.95m @ 3.13% Ni 0.4% Cu & 3.74g/t PGEs (4.79% NiEq*)**

Initial significant intersections were resubmitted for assaying of the remainder of the PGE suite.

These drill results are located outside of the current indicated resource and were targeting an area of 150m of strike where there were limited intersections between the original Rosie Resource and the historical Nariz mineralisation (both of these are now considered to be part of the Rosie system and have been included in the Rosie MRE). These results will extend the known indicated resource.

Significant individual Palladium assays up to **30g/t** were returned in hole DKDD0031 as well as Nickel assays up to **6.65%** in DKDD0033 (See Figure 1).

Down hole electromagnetic surveying (DHEM) was completed on all holes. All holes have a significant “in-hole” anomaly. All anomalies are broad and highly conductive. This indicates that there is significant extent to the mineralisation.

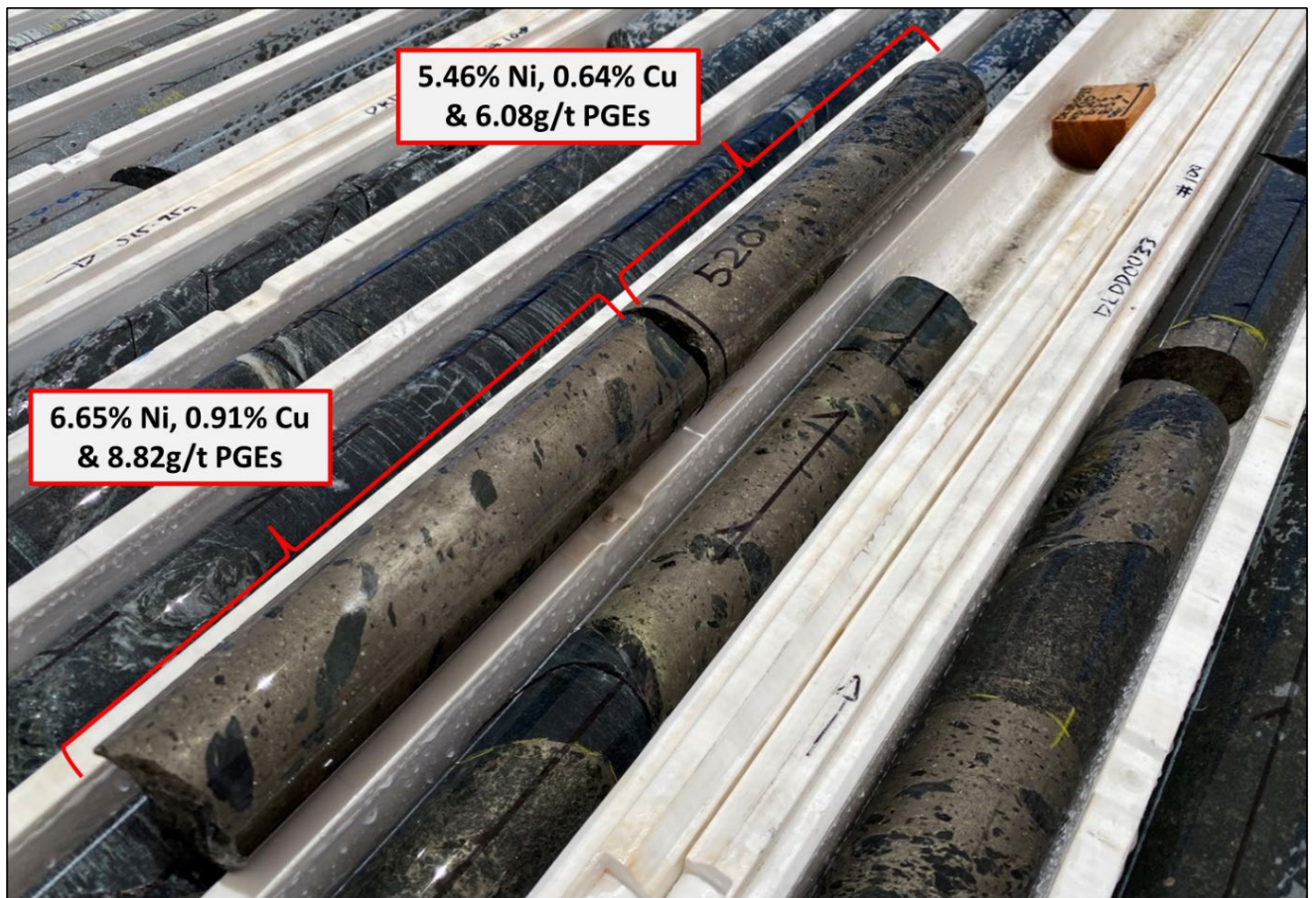


Figure 1: Massive sulphides in DKDD0033 at Rosie – Final Assays

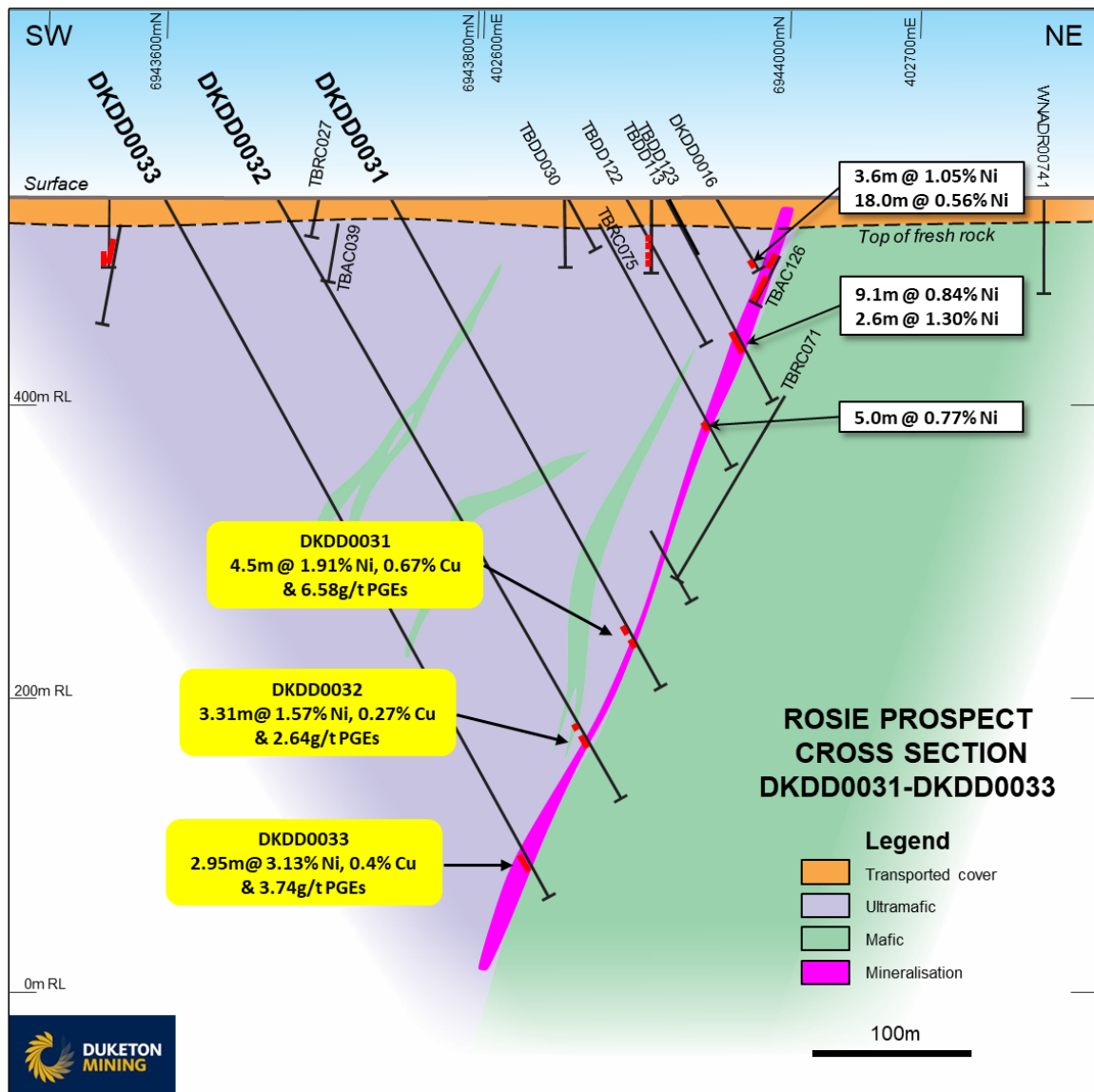


Figure 2: Cross Section of drillholes at Rosie – Final Assays

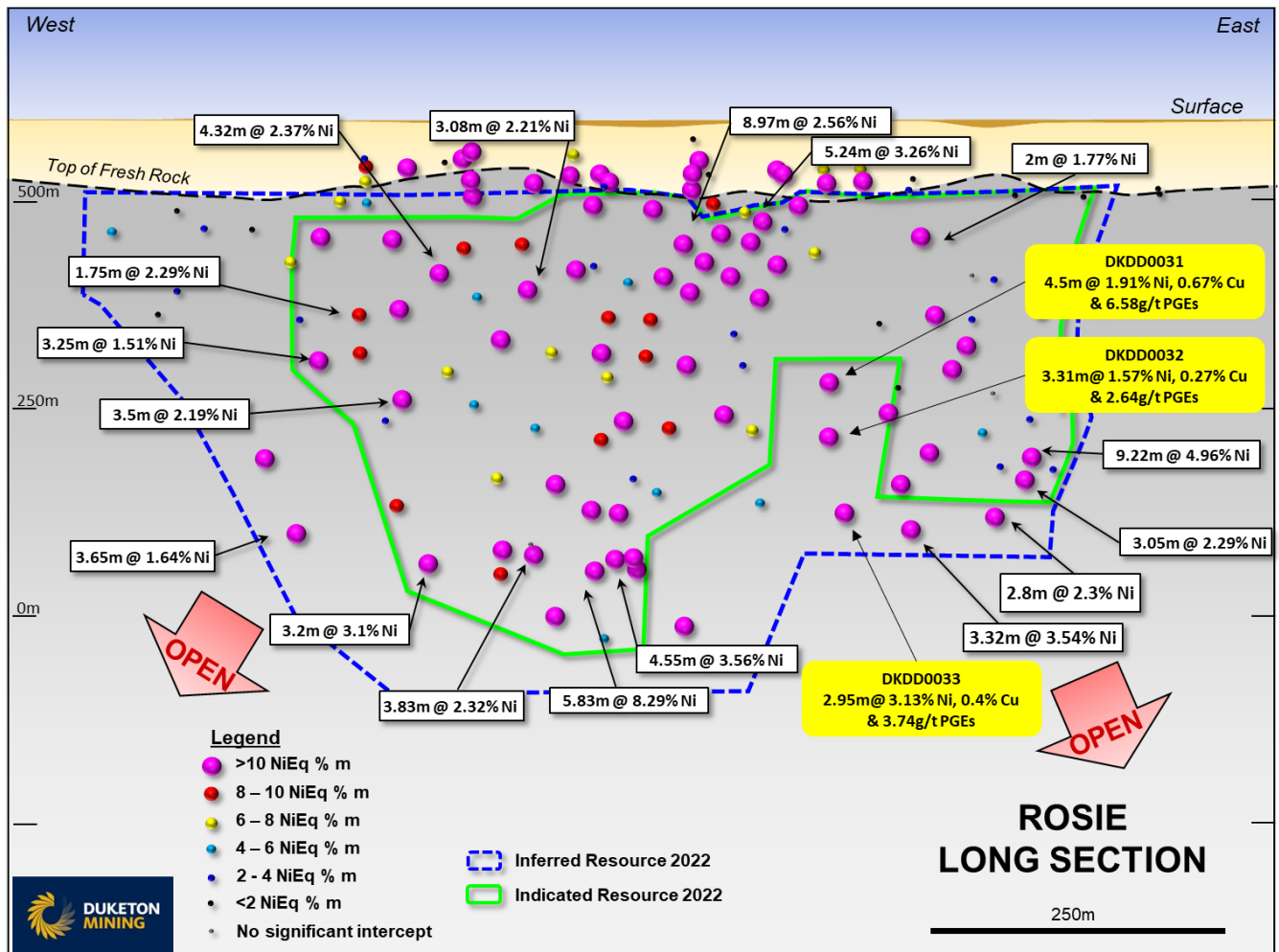


Figure 3: Rosie Long Section – Final Assays

Hole ID	Depth From (m)	Depth To (m)	Intercept Width (m)	Ni %	Cu %	Total PGEs g/t	Comments
DKDD0031	344.37	348.87	4.5	1.91	0.67	6.58	4.5m @ 1.91% Ni, 0.67% Cu & 6.58g/t PGEs
DKDD0032	423.25	429.91	6.66	0.99	0.16	1.69	6.66m @ 0.99% Ni, 0.16% Cu & 1.69g/t PGEs
inc.	426.6	429.91	3.31	1.57	0.27	2.64	3.31m @ 1.57% Ni, 0.27% Cu & 2.64g/t PGEs
DKDD0033	518.7	521.65	2.95	3.13	0.4	3.74	2.95m @ 3.13% Ni, 0.4% Cu & 3.74g/t PGEs

Table 1: Significant Intercept Table (Significant intercepts are >4000 ppm Ni, maximum internal dilution of 2 metres, intersections are downhole widths.)



Hole ID	Easting (MGA 94 Z51)	Northing (MGA 94 Z51)	Nominal RL (m)	Dip (°)	Azimuth (mag °)	Total Depth (m)
DKDD0031	402577	6943742	540	-60	20	373
DKDD0032	402550	6943672	540	-60	20	455.6
DKDD0033	402524	6943599	540	-60	20	544

Table 2: Drillhole collar details

The 4,000m diamond drill program announced in February 2023 (ASX: DKM 16th February 2023) is continuing at the end of the quarter. This drilling is targeting the significant moving loop electromagnetic (MLEM) anomaly to the west of Rosie on the C2 contact (ASX: DKM 21st December 2022), additional exploration targets and extensions to known mineralisation within the greater Bulge ultramafic complex and down plunge of Rosie outside current resource.

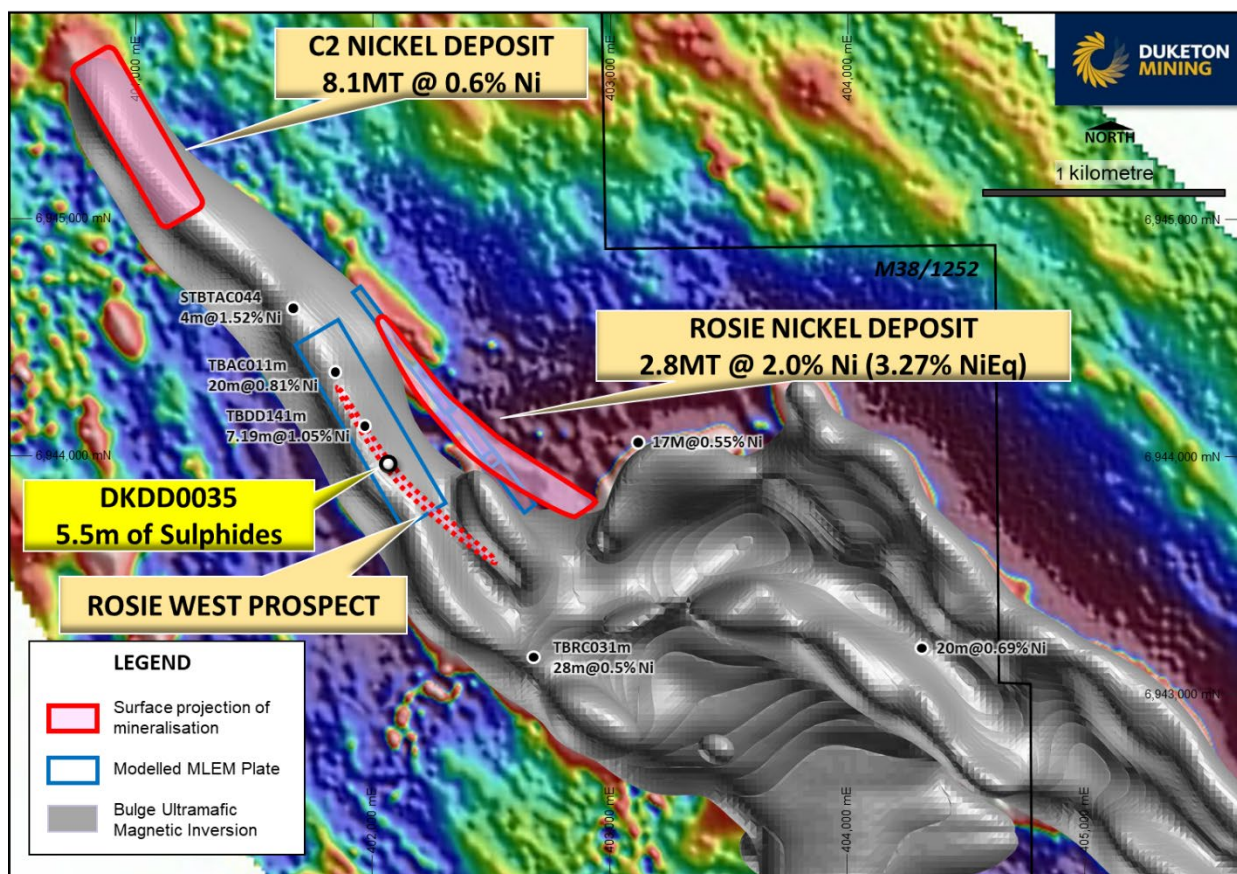


Figure 4: Plan View of the Bulge Area showing DKDD0035, significant MLEM plates in blue and surface projection of JORC compliant Resources in red. Background is the Magnetic Inversion of the Bulge Ultramafic over 1VD magnetic image.

The first drill hole (DKDD0035) of the current diamond drill program has returned sulphides over a 5.5 metre interval (ASX: DKM 28th February 2023).

This drill hole was aimed at testing the southern end of a 600m long surface EM anomaly. It is located west of Rosie on the C2 contact and has been completed to a final depth of 711m. The hole intersected mineralisation over a 5.5 metre interval including 20cm of massive/stringer sulphides.

Downhole electromagnetic (DHEM) surveying has been completed on DKDD0035.



Figure 5: Massive/stringer sulphides in DKDD0035 at 501.8m

From (m)	To (m)	Interval (m)	Description
496.5	497.5	1	Sheared mafic with 5% blebby sulphides (po-pn)
497.5	499.2	1.7	Sheared mafic
499.2	499.9	0.7	Sheared mafic with 2% blebby sulphides (po-pn)
499.9	501.8	1.9	Sheared mafic
501.8	502	0.2	Sheared mafic with 30% stringer sulphides (po-pn-cp)

Table 3: Lithology and Mineralisation in DKDD0035

Note: po – pyrrhotite, pn – pentlandite, cp – chalcopyrite

Hole ID	Easting (MGA 94 Z51)	Northing (MGA 94 Z51)	Nominal RL (m)	Dip (°)	Azimuth (mag °)	Total Depth (m)
DKDD0035	401936	6943716	550	-60	45	711

Table 4: Drill Hole Collar Details

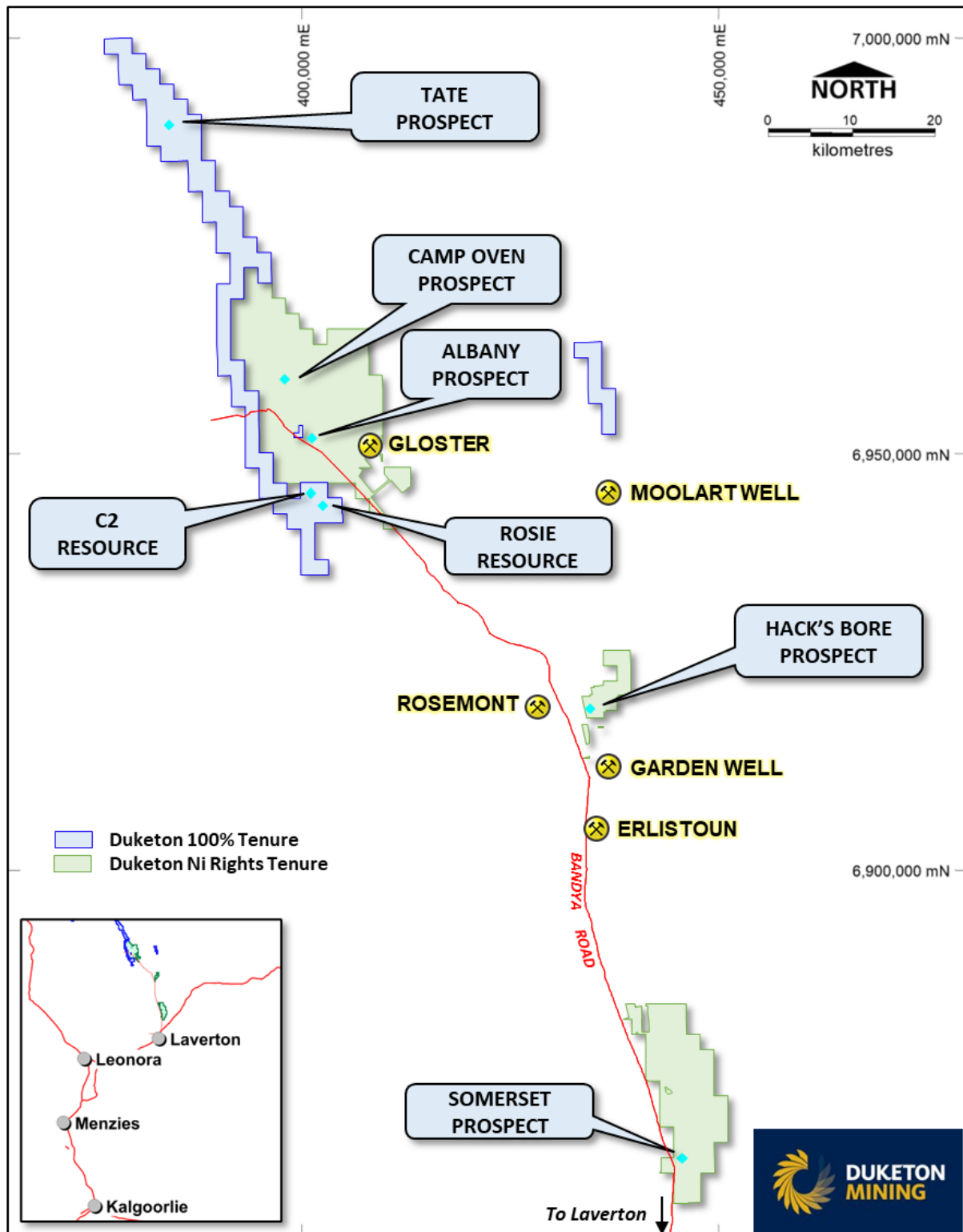


Figure 6: Plan of DKM Tenements showing Nickel Resources and Prospects

Mineral Resources (100% DKM)

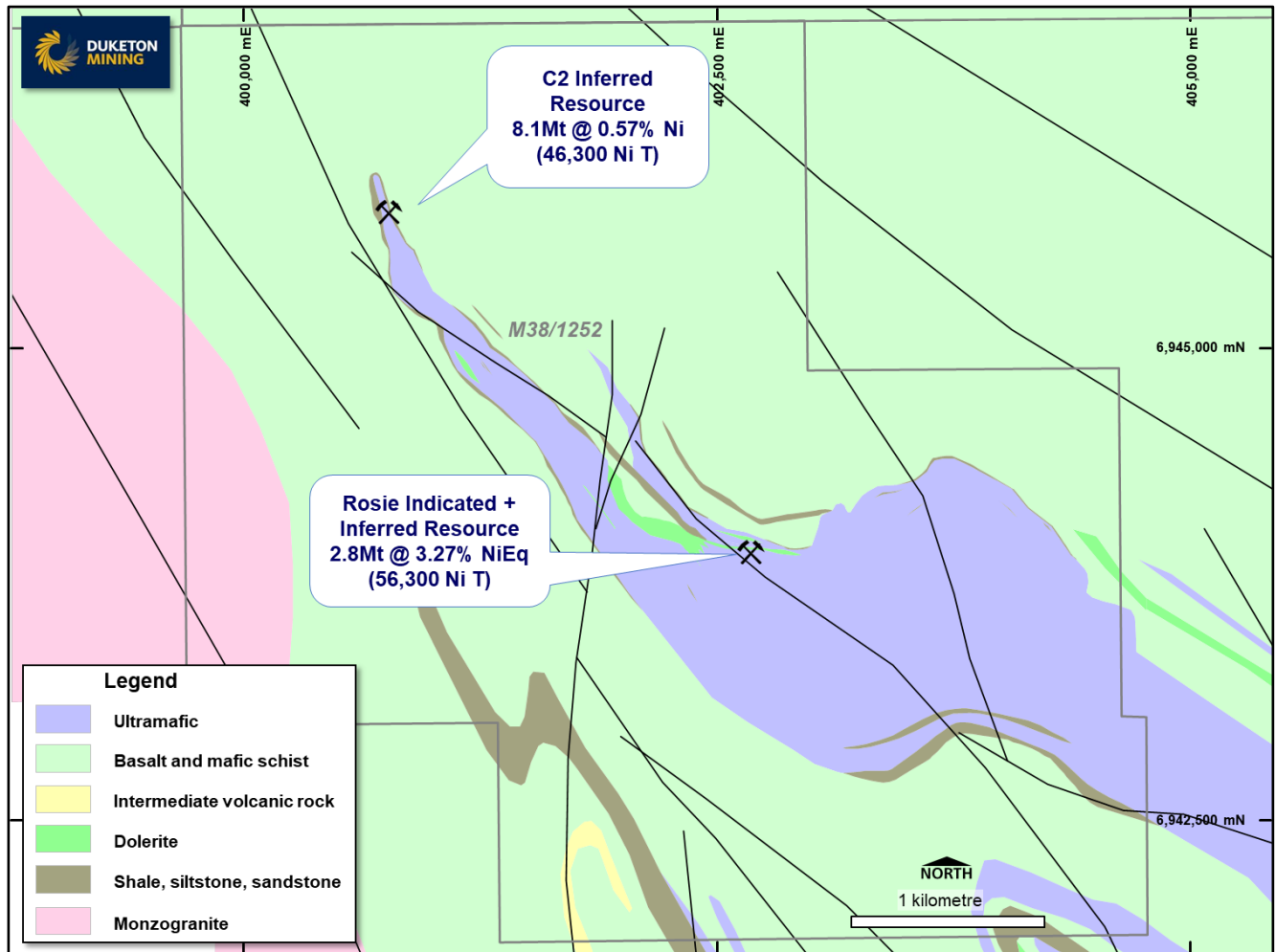


Figure 7: Plan of The Bulge Complex

Rosie – Mineral Resource Estimate

The Indicated and Inferred Mineral Resource Estimate for Rosie of 2.77 million tonnes at 3.27% nickel equivalent is reported in accordance with the 2012 JORC Code. The resource estimate is reported at >1% NiEq. Over 72% of the Resource has been classified as Indicated with the remainder in the Inferred Category. Mineralisation remains open in all directions.

The Mineral Resource contained metal stands at 56,300 tonnes of nickel, 11,800 tonnes of copper, 1,610 tonnes of cobalt and over 229,000 oz of total PGEs (Table 7).



Resource Category	Tonnes (kt)	Ni%	NiEq_ %
Indicated	2,012	2.11	3.35
Inferred	761	1.81	3.06
TOTAL	2,773	2.03	3.27

Table 5: Rosie Mineral Resource Statement (February 2022) >1.0% NiEq

Rosie Nickel Resource >1% NiEq							
Classification	Sulphide	Tonnes	Ni (%)	Cu (%)	Co (ppm)	Total PGEs (g/t)	NiEq) %
Indicated	Pentlandite	1,191,555	2.4	0.42	642	2.7	3.76
	Violarite	820,999	1.7	0.39	504	2.5	2.75
	Sub-Total	2,012,553	2.1	0.41	585	2.6	3.35
Inferred	Pentlandite	694,751	1.8	0.48	580	2.5	3.13
	Violarite	66,179	1.5	0.42	442	1.7	2.36
	Sub-Total	760,930	1.8	0.48	568	2.4	3.06
Total	All	2,773,483	2.0	0.43	580	2.6	3.27

Table 6: Rosie Mineral Resource Grade

Note: For Tables 5 and 6.

- (1) Assumptions for the nickel equivalent are: Prices (in USD) \$8.00/lb Ni, \$3.65/lb Cu, \$15.30/lb Co, \$1,100/oz Pt, \$2,300/oz Pd and \$15,500/oz Rh.
- (2) Recovery assumptions from metallurgical test work are: Pentlandite domain 96.9% Ni, 99.5% Cu, 95.1% Co, 78.2% Pt, 97.6% Pd and 83.4% Rh. Violarite domain 88.7% Ni, 94.5% Cu, 88.5% Co, 57.6% Pt, 87.3% Pd and 64.8% Rh.
- (3) The following equations were used to calculate nickel equivalent – Cu and Co measured in ppm and PGEs measured in ppb – all converted to percentages for NiEq calculation:
- (4) Pentlandite domain: $NiEq = Ni\% + (Cu\% * 0.995 * (3.65/8)) + (Co\% * 0.951 * (15.3/8)) + (Pt\% * 0.782 * (1100 * 14.583/8)) + (Pd\% * 0.976 * (2300 * 14.583/8)) + (Rh\% * 0.834 * (15500 * 14.583/8))$
- (5) Violarite domain: $NiEq = Ni\% + (Cu\% * 0.945 * (3.65/8)) + (Co\% * 0.885 * (15.3/8)) + (Pt\% * 0.576 * (1100 * 14.583/8)) + (Pd\% * 0.873 * (2300 * 14.583/8)) + (Rh\% * 0.648 * (15500 * 14.583/8))$ where 14.583 is the amount of troy ounces per pound.

Classification	Ore Type	Contained Metal			
		Ni (t)	Cu (t)	Co (t)	Total PGEs (oz)
Indicated	Pentlandite	28,524	4,978	764	104,868
	Violarite	13,966	3,230	414	64,869
	Sub-Total	42,490	8,208	1,178	169,737
Inferred	Pentlandite	12,786	3,337	403	55,740
	Violarite	987	279	29	3,551
	Sub-Total	13,774	3,616	432	59,291
	Total	56,264	11,824	1,610	229,028

Table 7: Rosie Mineral Resource Contained Metal

The resource includes a reportable nickel equivalent number based on metallurgical work completed to determine recoveries (see ASX announcement 8th July 2020 & 10th July 2020). It is the opinion of DKM that all the elements included in the metal equivalents calculation have a reasonable potential to be recovered and sold.

C2 – Mineral Resource Estimate

The Indicated and Inferred Mineral Resource Estimate for C2 is **8.06 million tonnes at 0.57% nickel** and is reported in accordance with the 2012 JORC Code. The resource estimate is reported at >0.4% Ni grade. Over **99% of the Resource is classified as Indicated**. Mineralisation remains open in all directions.

The Mineral Resource contained metal stands at **46,263 tonnes of nickel, 2,339 tonnes of copper, 1,505 tonnes of cobalt and 25,684 oz of total PGEs** (Table 9).



C2 Nickel Resource >0.4%Ni						
Classification	Tonnes	Ni (%)	Cu (%)	Pd (ppb)	Pt (ppb)	S (%)
Indicated	7,955,751	0.57	0.03	56.7	42.8	1.7
Inferred	107,790	0.44	0.01	34.7	31.4	0.5
Total	8,063,541	0.57	0.03	56.5	42.7	1.7

Table 8: C2 Nickel Resource > 0.4% Ni with Auxiliary Attributes

(see ASX Announcement 12 December 2022)

Classification	Ni tonnes	Cu tonnes	Co tonnes	PGE oz
Indicated	45,790	2,325	1,490	25,455
Inferred	474	15	14	229
Total	46,263	2,339	1,505	25,684

Table 9: C2 Mineral Resource Contained Metal

Combined Rosie and C2 Resources

The total JORC compliant nickel resource for the Bulge Area (Rosie and C2) now stands at 102,527 tonnes of nickel, 14,163 tonnes of copper and 254,712 ounces of PGEs.

Combined Metal Inventory, The Bulge Area			
Deposit	Ni tonnes	Cu tonnes	PGE oz
Rosie	56,264	11,824	229,028
C2	46,263	2,339	25,684
TOTAL	102,527	14,163	254,712

Table 10: Combined Metal Inventory, The Bulge Area



Regional Exploration

Projects include:

- Stephens – base metals VMS project in the Gullewa-Koolanooka Greenstone Belt with a number of historical significant drill intercepts
- Doris – uranium tenement within the Narryer Terrane, 125km north of Meekatharra
- Cunyu – project covering the entire Merrie Greenstone Belt, early stage exploration
- Barlee – gold project surrounding Halleys East Gold Mine, 200km north of Southern Cross
- Fisher South – gold and nickel project at the southern end of the Fisher Greenstone Belt

Tenement applications:

- Otways – copper project located in the Pilbara

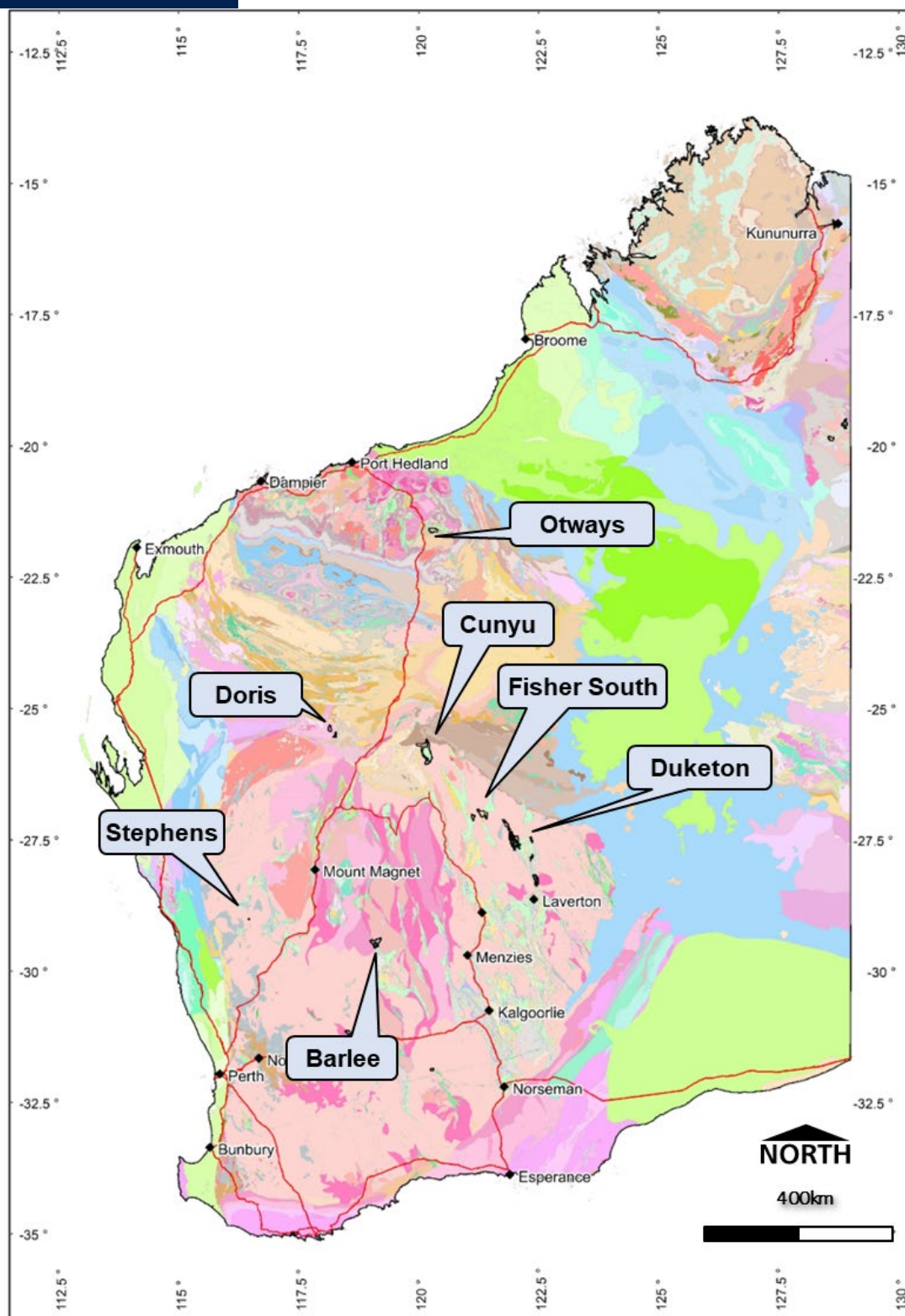


Figure 8: Duketon Regional Tenement Acquisition



Ongoing Strategy

Duketon remains well positioned to drive value from two approaches:

1. Expand/Study Nickel Resources - Complete mining study and target extensions to Rosie & C2 and the greater area for Ni-Cu-PGE's
2. New Tenure – Opportunistically acquire new tenure via opportunistic applications or by simple/low-cost commercial means.

Corporate

At 31 March 2023 Duketon had approximately **A\$16.8M** available from cash reserves of **A\$13.2M** and a liquids position of circa **A\$3.6M**.

ASX Additional Information

Exploration and evaluation expenditure during the quarter was \$912,000 associated with diamond drilling, assaying, geophysical surveys, resource updates, mining studies and tenement compliance costs. Details of exploration activity during the quarter are set out in this report. There were no substantive mining production and development activities during the quarter. During the quarter, the Company made cash payments of \$97,000 to related parties and their associates. This was the aggregate amount paid to the directors including salary, directors' fees, consulting fees and superannuation.

Authorised for release by:

Stuart Fogarty
Duketon Mining - Managing Director
+61 8 6315 1490

The information in the announcement that relates to production targets or financial information derived from a production target is extracted from the ASX announcement 28 April 2021 for the Rosie Scoping Study and is available to view on the Company's website (www.duketonmining.com.au). The company confirms that it is not aware of any new information or data that materially affects the information included in the original market announcement and that all material assumptions underpinning the production target or the financial information derived from the production target in the relevant market announcement continue to apply and have not materially changed. The Company confirms that the form and context in which the Competent Person's findings are presented have not been materially modified from the original market announcement.

The information in the announcement that relates to Mineral Resources for Rosie is extracted from the ASX announcement 10 March 2022 and is available to view on the Company's website (www.duketonmining.com.au). The information in the announcement that relates to Mineral Resources for C2 is extracted from ASX announcement 12 December 2022. The company confirms that it is not aware of any new information or data that materially affects the information included in the original market announcements and that all material assumptions and technical parameters underpinning the estimates in the relevant market announcements continue to apply and have not materially changed. The Company confirms that the form and context in which the Competent Person's findings are presented have not been materially modified from the original market announcement.



The information in this report that relates to exploration results is based on information compiled by Ms Kirsty Culver, Member of the Australian Institute of Geoscientists (AIG) and an employee of Duketon Mining Limited. Ms Culver has sufficient experience which is relevant to the style of mineralisation and type of deposit under consideration and to the activity that is being undertaken to qualify as a competent person as defined in the JORC Code 2012. Ms Culver consents to the inclusion in the report of the matters based on the information in the form and context in which it appears.



Appendix 1. Summary of Mining Tenements

As at 31 March 2023 the Company had an interest in the following tenements:

Tenement number	Project	State	Status	Interest at beginning of quarter	Interest at end of quarter	Acquired/Disposed
E38/1997	Mt Mabel	WA	Granted	100% Ni (note 1)	100% Ni (note 1)	N/A
E38/2666	Duketon	WA	Granted	100% Ni (note 1)	100% Ni (note 1)	N/A
E38/2805	Duketon	WA	Granted	100% Ni (note 1)	100% Ni (note 1)	N/A
E38/2834	Duketon	WA	Granted	100% Ni (note 1)	100% Ni (note 1)	N/A
E38/2866	Duketon	WA	Granted	100% Ni (note 1)	100% Ni (note 1)	N/A
E38/2916	Duketon	WA	Granted	100% Ni (note 1)	100% Ni (note 1)	N/A
E38/3142	Granite Peak	WA	Granted	100% Ni (note 1)	100% Ni (note 1)	N/A
E38/3549	Millar Hill	WA	Granted	100% Ni (note 1)	100% Ni (note 1)	N/A
E38/3550	Mount Mabel	WA	Granted	100% Ni (note 1)	100% Ni (note 1)	N/A
E38/3617	Moolart North	WA	Application	100%	100%	N/A
E38/3658	Duketon North	WA	Granted	100%	100%	N/A
E45/6262	Otways	WA	Application	100%	100%	N/A
E45/6364	Otways	WA	Application	100%	100%	N/A
E52/3833	Doris	WA	Granted	100%	100%	N/A
E52/3923	Cunyu	WA	Application	100%	100%	N/A
E52/4004	Doris North	WA	Granted	100%	100%	N/A
E53/2143	Fisher South	WA	Granted	100%	100%	N/A
E53/2158	Dusty East	WA	Application	100%	100%	N/A
E59/2414	Stephens	WA	Granted	100%	100%	N/A
E63/2050	Cat Camp	WA	Granted	100%	0%	Disposed
E69/3763	Cunyu	WA	Granted	100%	100%	N/A
E77/2717	Barlee	WA	Granted	100%	100%	N/A
E77/2794	North Walgoolan	WA	Application	100%	100%	N/A
E77/3027	Barlee	WA	Application	0%	100%	N/A
E80/5493	Pelican	WA	Application	100%	0%	Disposed
E80/5732	Hermes South	WA	Application	100%	0%	Disposed
E80/5822	Pelican	WA	Application	100%	0%	Disposed
M38/1252	Duketon	WA	Granted	100%	100% Ni (note 1)	N/A
P38/4550	Duketon	WA	Granted	100%	100%	N/A

The Company did not have any interests in farm in or farm out agreements at the beginning, end or during the quarter. Note 1: 100% interest held in nickel rights only.

Appendix 5B

Mining exploration entity or oil and gas exploration entity quarterly cash flow report

Name of entity

Duketon Mining Limited

ABN

76 159 084 107

Quarter ended ("current quarter")

31 March 2023

Consolidated statement of cash flows		Current quarter \$A'000	Year to date (9 months) \$A'000
1.	Cash flows from operating activities		
1.1	Receipts from customers	-	-
1.2	Payments for		
	(a) exploration & evaluation	(912)	(3,490)
	(b) development	-	-
	(c) production	-	-
	(d) staff costs	(83)	(253)
	(e) administration and corporate costs	(67)	(250)
1.3	Dividends received (see note 3)	-	-
1.4	Interest received	83	192
1.5	Interest and other costs of finance paid	(1)	(3)
1.6	Income taxes refunded/(paid)	-	843
1.7	Government grants and tax incentives	-	-
1.8	Other (provide details if material)	-	-
1.9	Net cash from / (used in) operating activities	(980)	(2,961)

2.	Cash flows from investing activities		
2.1	Payments to acquire or for:		
	(a) entities	-	-
	(b) tenements	-	-
	(c) property, plant and equipment	-	-
	(d) exploration & evaluation	-	-
	(e) investments	-	-
	(f) other non-current assets	-	-

Consolidated statement of cash flows		Current quarter \$A'000	Year to date (9 months) \$A'000
2.2	Proceeds from the disposal of:		
	(a) entities	-	-
	(b) tenements	-	-
	(c) property, plant and equipment	-	-
	(d) investments	-	-
	(e) other non-current assets	-	-
2.3	Cash flows from loans to other entities	-	-
2.4	Dividends received (see note 3)	-	-
2.5	Other (provide details if material)	-	-
2.6	Net cash from / (used in) investing activities	-	-

3.	Cash flows from financing activities		
3.1	Proceeds from issues of equity securities (excluding convertible debt securities)	-	-
3.2	Proceeds from issue of convertible debt securities	-	-
3.3	Proceeds from exercise of options	-	-
3.4	Transaction costs related to issues of equity securities or convertible debt securities	-	-
3.5	Proceeds from borrowings	-	-
3.6	Repayment of borrowings	-	-
3.7	Transaction costs related to loans and borrowings	-	-
3.8	Dividends paid	-	-
3.9	Other (Principal elements of lease payments)	(8)	(24)
3.10	Net cash from / (used in) financing activities	(8)	(24)

4.	Net increase / (decrease) in cash and cash equivalents for the period		
4.1	Cash and cash equivalents at beginning of period	14,232	16,229
4.2	Net cash from / (used in) operating activities (item 1.9 above)	(980)	(2,961)
4.3	Net cash from / (used in) investing activities (item 2.6 above)	-	-
4.4	Net cash from / (used in) financing activities (item 3.10 above)	(8)	(24)

Mining exploration entity or oil and gas exploration entity quarterly cash flow report

Consolidated statement of cash flows		Current quarter \$A'000	Year to date (9 months) \$A'000
4.5	Effect of movement in exchange rates on cash held	-	-
4.6	Cash and cash equivalents at end of period	13,244	13,244

5.	Reconciliation of cash and cash equivalents at the end of the quarter (as shown in the consolidated statement of cash flows) to the related items in the accounts	Current quarter \$A'000	Previous quarter \$A'000
5.1	Bank balances	3,214	4,202
5.2	Call deposits	10,030	10,030
5.3	Bank overdrafts	-	-
5.4	Other (provide details)	-	-
5.5	Cash and cash equivalents at end of quarter (should equal item 4.6 above)	13,244	14,232

* Excludes 31 March 2023 market value of listed equity investments of \$3,609,769.

6.	Payments to related parties of the entity and their associates	Current quarter \$A'000
6.1	Aggregate amount of payments to related parties and their associates included in item 1	97
6.2	Aggregate amount of payments to related parties and their associates included in item 2	-

Note: if any amounts are shown in items 6.1 or 6.2, your quarterly activity report must include a description of, and an explanation for, such payments.

Mining exploration entity or oil and gas exploration entity quarterly cash flow report

7. Financing facilities <i>Note: the term "facility" includes all forms of financing arrangements available to the entity. Add notes as necessary for an understanding of the sources of finance available to the entity.</i>	Total facility amount at quarter end \$A'000	Amount drawn at quarter end \$A'000
7.1 Loan facilities	-	-
7.2 Credit standby arrangements	-	-
7.3 Other (please specify)	-	-
7.4 Total financing facilities	-	-
7.5 Unused financing facilities available at quarter end		-
7.6 Include in the box below a description of each facility above, including the lender, interest rate, maturity date and whether it is secured or unsecured. If any additional financing facilities have been entered into or are proposed to be entered into after quarter end, include a note providing details of those facilities as well.		
N/A		

8. Estimated cash available for future operating activities	\$A'000
8.1 Net cash from / (used in) operating activities (item 1.9)	(980)
8.2 (Payments for exploration & evaluation classified as investing activities) (item 2.1(d))	-
8.3 Total relevant outgoings (item 8.1 + item 8.2)	(980)
8.4 Cash and cash equivalents at quarter end (item 4.6)	13,244
8.5 Unused finance facilities available at quarter end (item 7.5)	-
8.6 Total available funding (item 8.4 + item 8.5)	13,244
8.7 Estimated quarters of funding available (item 8.6 divided by item 8.3)	13.5
<i>Note: if the entity has reported positive relevant outgoings (ie a net cash inflow) in item 8.3, answer item 8.7 as "N/A". Otherwise, a figure for the estimated quarters of funding available must be included in item 8.7.</i>	
8.8 If item 8.7 is less than 2 quarters, please provide answers to the following questions:	
8.8.1 Does the entity expect that it will continue to have the current level of net operating cash flows for the time being and, if not, why not?	
Answer: N/A	
8.8.2 Has the entity taken any steps, or does it propose to take any steps, to raise further cash to fund its operations and, if so, what are those steps and how likely does it believe that they will be successful?	
Answer: N/A	
8.8.3 Does the entity expect to be able to continue its operations and to meet its business objectives and, if so, on what basis?	
Answer: N/A	
<i>Note: where item 8.7 is less than 2 quarters, all of questions 8.8.1, 8.8.2 and 8.8.3 above must be answered.</i>	

Compliance statement

- 1 This statement has been prepared in accordance with accounting standards and policies which comply with Listing Rule 19.11A.
- 2 This statement gives a true and fair view of the matters disclosed.

Date: 14 April 2023

'Signed electronically'

Authorised by: Dennis Wilkins, Company Secretary
(Name of body or officer authorising release – see note 4)

Notes

1. This quarterly cash flow report and the accompanying activity report provide a basis for informing the market about the entity's activities for the past quarter, how they have been financed and the effect this has had on its cash position. An entity that wishes to disclose additional information over and above the minimum required under the Listing Rules is encouraged to do so.
2. If this quarterly cash flow report has been prepared in accordance with Australian Accounting Standards, the definitions in, and provisions of, *AASB 6: Exploration for and Evaluation of Mineral Resources* and *AASB 107: Statement of Cash Flows* apply to this report. If this quarterly cash flow report has been prepared in accordance with other accounting standards agreed by ASX pursuant to Listing Rule 19.11A, the corresponding equivalent standards apply to this report.
3. Dividends received may be classified either as cash flows from operating activities or cash flows from investing activities, depending on the accounting policy of the entity.
4. If this report has been authorised for release to the market by your board of directors, you can insert here: "By the board". If it has been authorised for release to the market by a committee of your board of directors, you can insert here: "By the [name of board committee – eg Audit and Risk Committee]". If it has been authorised for release to the market by a disclosure committee, you can insert here: "By the Disclosure Committee".
5. If this report has been authorised for release to the market by your board of directors and you wish to hold yourself out as complying with recommendation 4.2 of the ASX Corporate Governance Council's *Corporate Governance Principles and Recommendations*, the board should have received a declaration from its CEO and CFO that, in their opinion, the financial records of the entity have been properly maintained, that this report complies with the appropriate accounting standards and gives a true and fair view of the cash flows of the entity, and that their opinion has been formed on the basis of a sound system of risk management and internal control which is operating effectively.
6. By the Company lodging this Appendix 5B, the Managing Director and CFO declare that the Appendix 5B for the relevant quarter:
 - presents a true and fair view, in all material respects, of the cashflows of the Company for the relevant quarter and is in accordance with relevant accounting standards;
 - the statement given above is founded on a sound system of risk management and internal compliance and control which implements the policies adopted by the Board; and
 - the Company's financial records have been properly maintained and the Company's risk management and internal compliance and control system is operating efficiently and effectively in all material respects.